

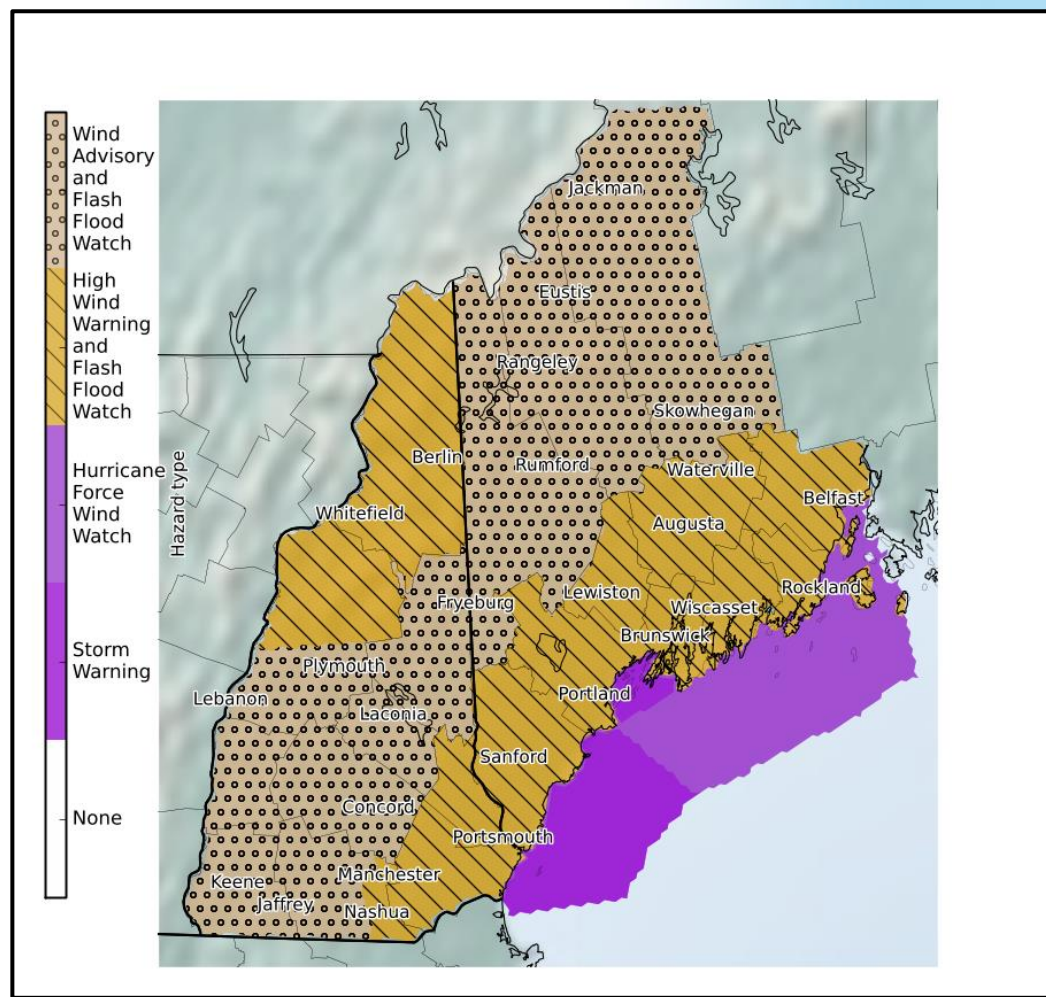
Significant Coastal Storm

Decision Support Briefing
As of 5:00 AM
Sunday, October 29th







What Has Changed?

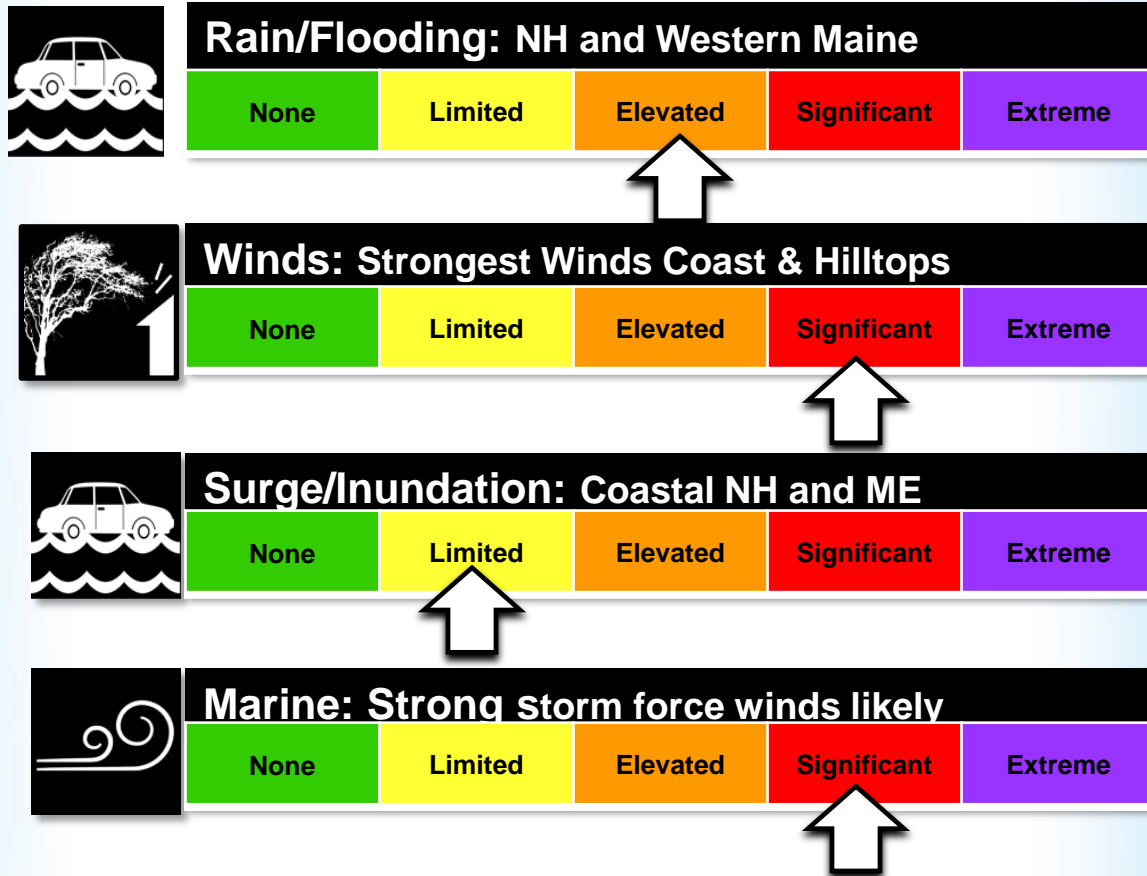
- ✓ Increased wind gusts
- ✓ High wind warnings and wind advisories issued



Main Points

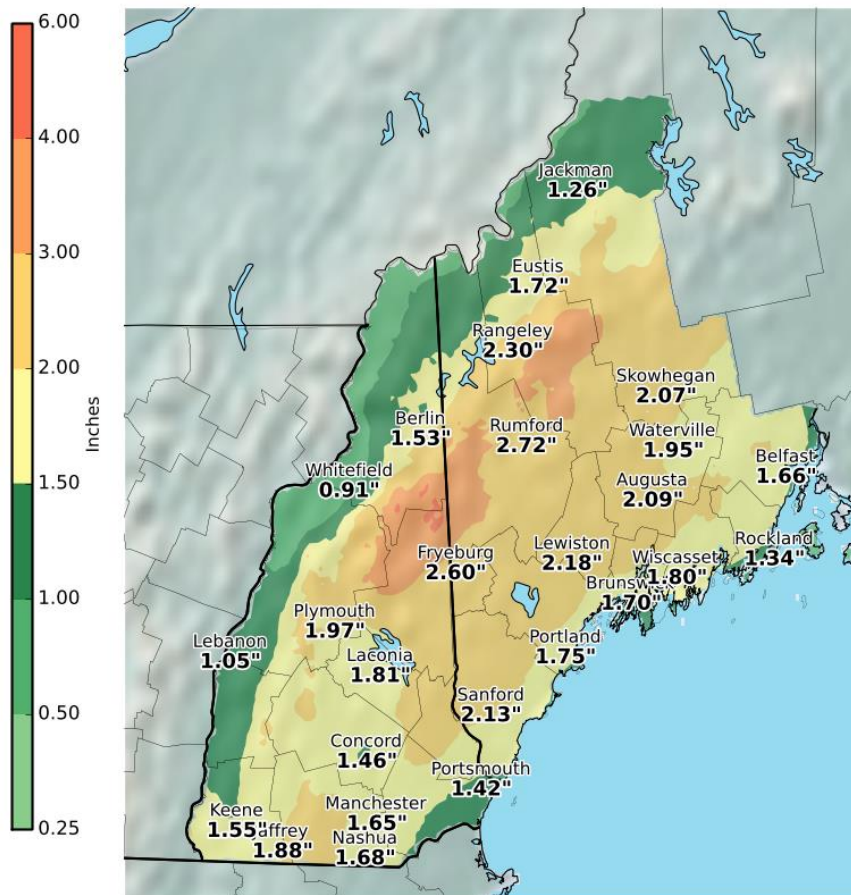
Hazard	Impacts	Location	Timing
Rain/Flooding 	<p>1 to 3 inches of rain likely with higher amounts possible in the mountains</p> <p>Flash flooding possible River flooding possible</p>	<p>All of New Hampshire and Western Maine</p> <p>Greatest amounts on the southeast slopes of the mountains</p>	<p>Today – Monday</p> <p>Heaviest late this evening through early Monday</p>
Wind 	<p>Wind gusts up to 60 mph possible</p> <p>Numerous power outages possible</p>	<p>Coastal Maine and New Hampshire as well as exposed high terrain and northwest slopes of the White Mountains</p>	<p>Strongest wind gusts late this evening through Monday</p>
Storm Surge/Inundation 	<p>Beach erosion possible</p>	<p>New Hampshire Seacoast and western Maine coast</p>	<p>This evening and especially Monday morning high tides</p>
Marine 	<p>Storm force winds likely</p> <p>Hurricane force wind gusts possible</p>	<p>All Coastal Waters</p> <p>Strongest gusts possible for the waters north of Cape Elizabeth</p>	<p>Late this evening through Monday morning</p>

Summary of Greatest Impacts



Storm Total Rain

Valid: 10/29/2017 02:00 AM - 10/30/2017 08:00 PM EDT



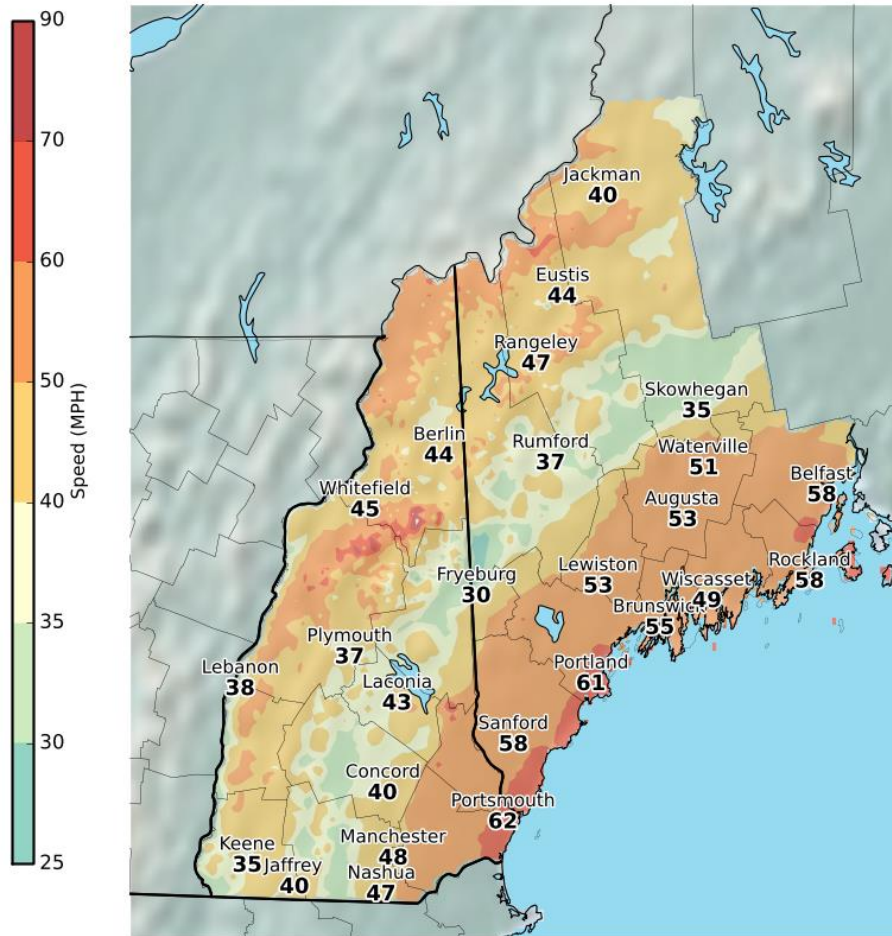
Storm Confidence:

- ✓ Confidence is high for a impactful storm, with high confidence in significant impacts

Impacts ↑	Extreme			
	Significant			✗
	Elevated			
	Limited			
	None			
		Low	Moderate	High
		Confidence →		

Maximum Wind Gusts

Valid: 10/29/2017 06:00 PM - 10/30/2017 11:00 AM EDT



Impacts and Timing:

- ✓ First round of strong winds
 - ✓ This evening into early Monday
 - ✓ Strong southeast gusts around 60 mph
 - ✓ Near coastal locations, hilltops, and northwest downslope regions of high terrain
- ✓ Second round of strong winds
 - ✓ Monday morning
 - ✓ Strong southeast gusts in excess of 60 mph
 - ✓ Midcoast Maine
- ✓ Third round of strong winds
 - ✓ Monday afternoon
 - ✓ Strong westerly gusts in excess of 40 mph
 - ✓ All of New Hampshire and western Maine
- ✓ Downed trees/branches may lead to power outages

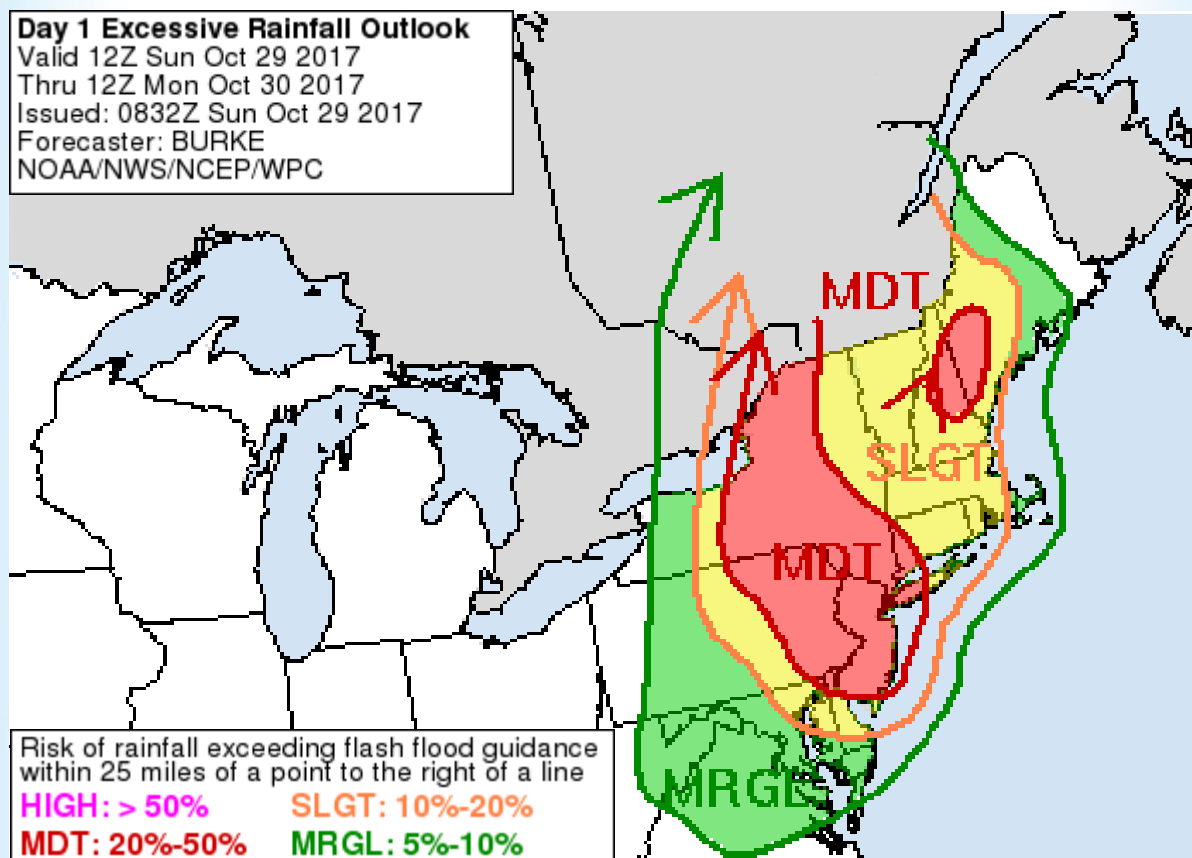
Coastal Impacts Monday

	Portland, ME	Fort Point, NH
Time	7:40 AM	7:53 AM
Astronomical Tide	8.5 ft	8.3 ft
Storm Surge	1.5-2 ft	1.5-2 ft
Nearshore Waves	15-20 ft	15-20 ft
Impact	Beach erosion possible	Beach erosion possible

What to Expect:

- ✓ Building nearshore waves may allow for minor beach erosion late tonight and especially early Monday

- **Most likely points for river flooding include:**
 - The Saco River at North Conway, NH
 - The Pemigewasset River at Woodstock and Plymouth, NH
 - The Swift River at Roxbury, ME
- **Highest amounts of rainfall are most likely on the southeast slopes of the White Mountains**
- **Flash flood watches continue for all of New Hampshire and western Maine**



Event Summary

Significant Coastal Storm Likely Sunday-Monday

- ✓ Confidence is **HIGH** that this event will occur and **HIGH** on expected impacts
- ✓ Period of greatest impact: Midnight Tonight – Monday Morning



The potential exists for one to three inches of rain with higher amounts in the mountains.



Strong southeast winds may result in power outages especially along the coast and in the mountains



Storm force to near hurricane force gusts over the waters with some coastal erosion possible

Contact and Next Briefing Information



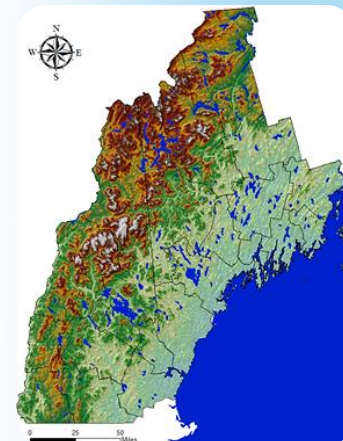
Next Briefing

When: By 5 PM on 10/29/2017

Method: E-mail

Briefing Webpage:

<http://www.weather.gov/gyx/EMhome>



Web:

<http://weather.gov/gyx>



Phone (public):

(207) 688-3216



E-mail:

gyx.skywarn@noaa.gov



Facebook:

[NWSSGray](#)



Twitter:

[@NWSSGray](#)



YouTube:

[NWS](#)

Disclaimer: The information contained within this briefing is time-sensitive, do not use after 5 PM October 29th

