



Tropical Update



11:00 AM EDT

Friday, September 30, 2022

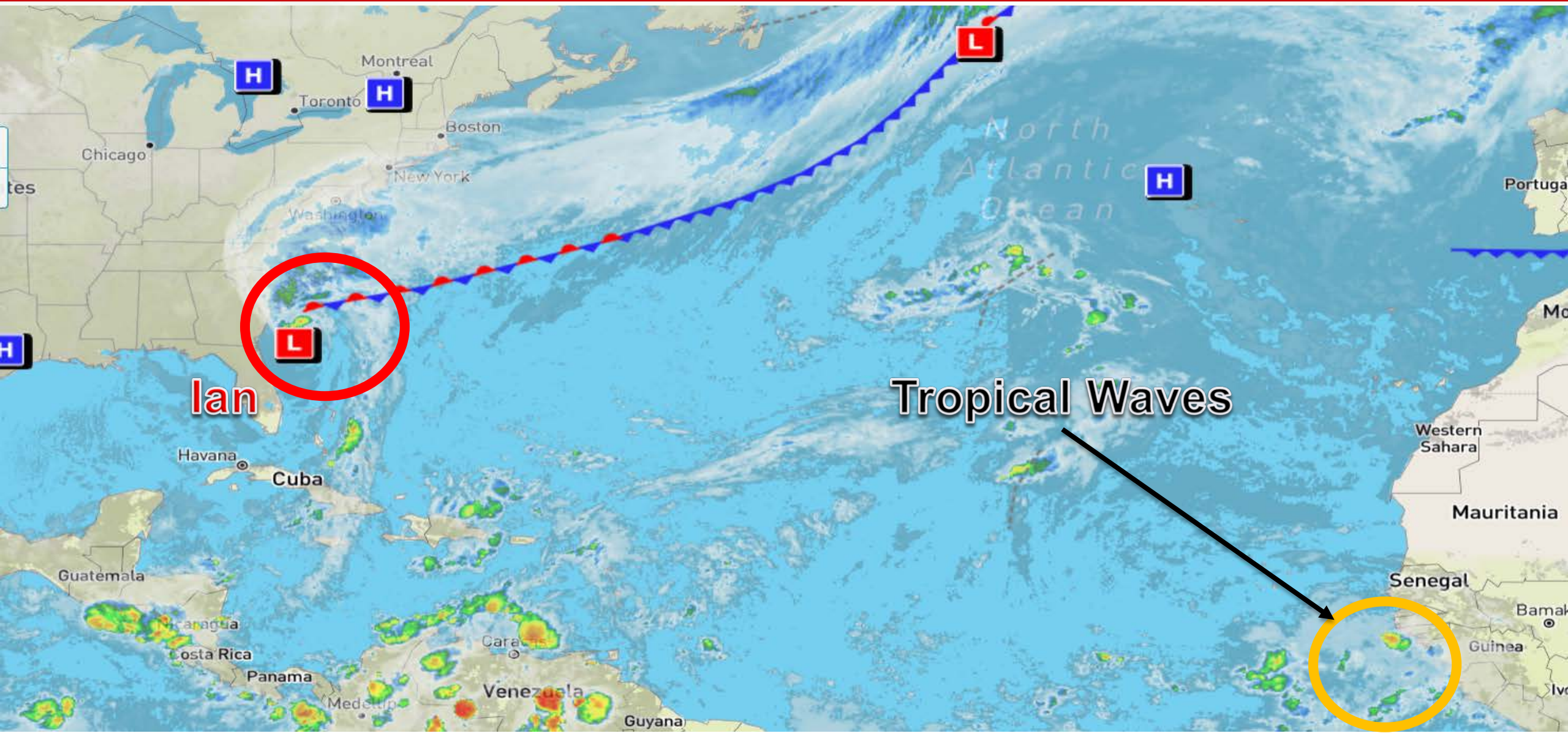
Hurricane Ian and African Tropical Wave

This update is intended for government and emergency response officials, and is provided for informational and situational awareness purposes only. Forecast conditions are subject to change based on a variety of environmental factors. For additional information, or for any life safety concerns with an active weather event please contact your County Emergency Management or Public Safety Office, local National Weather Service forecast office, or visit the National Hurricane Center website at www.hurricanes.gov.



Atlantic Basin Satellite Image

Chance of development: None Low Medium High

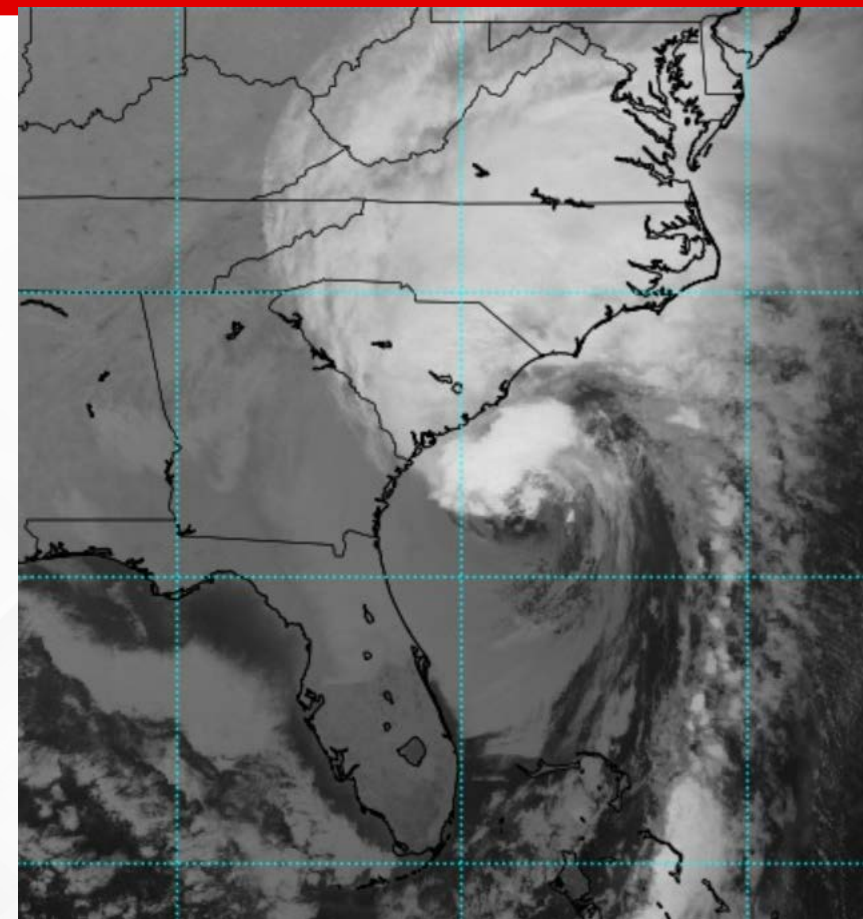




Hurricane Ian

11 AM Friday: Florida Threats & Changes Since Last Packet

	MINIMAL	Low	MODERATE	HIGH	EXTREME
 WINDS					
 STORM SURGE					
 FLOODING					
 TORNADOES					
	Low	MODERATE	HIGH		
 RIP CURRENTS					



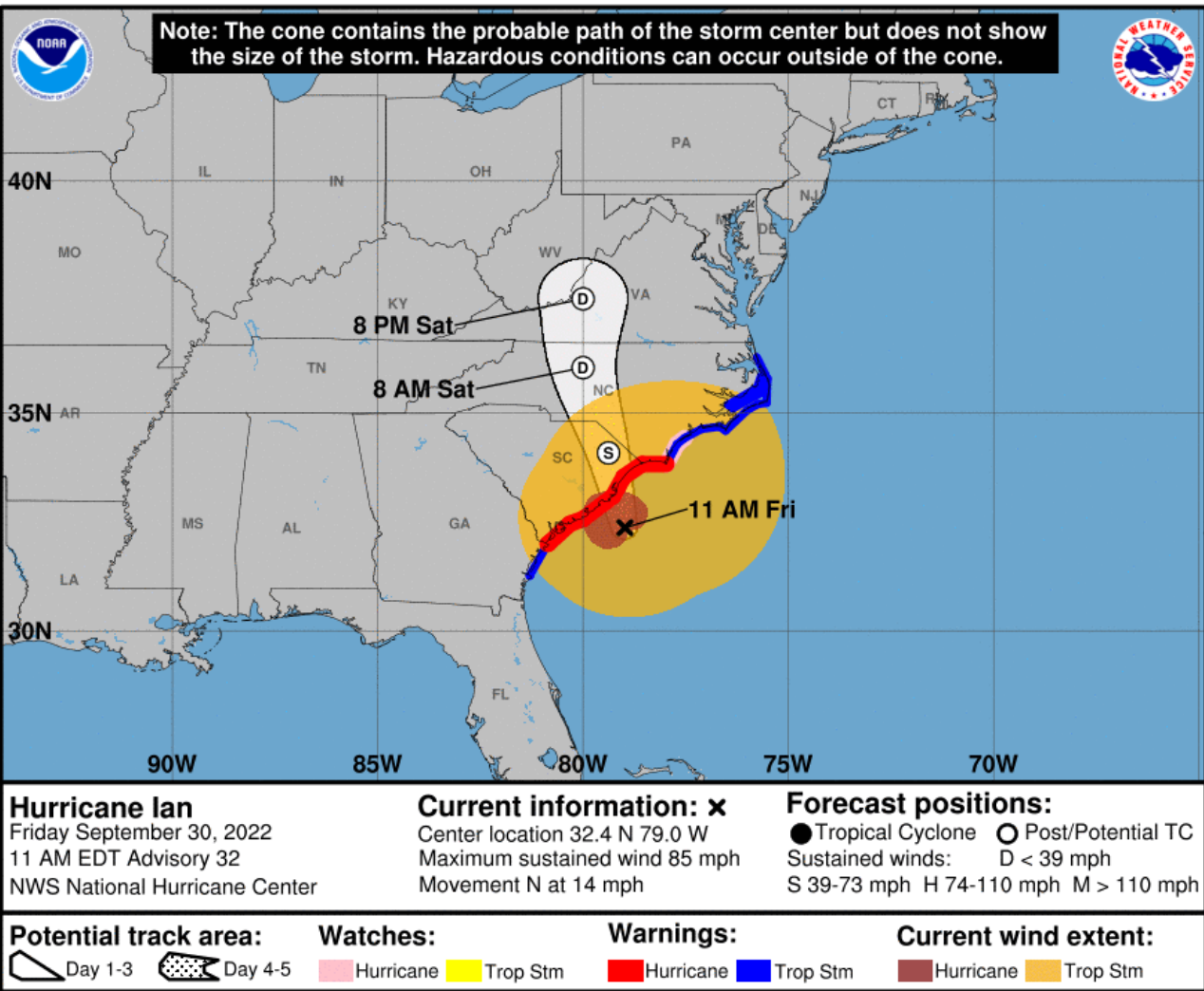
Overview/Recent Changes:

Ian remains a Category 1 hurricane. Tropical Storm and Storm Surge Warnings have been cancelled for Florida but lingering flooding effects will continue for several more days.



Forecast Cone

Hurricane Ian ([LINK](#))



- **Location:** 200 miles NE of Jacksonville, FL
- **Maximum Sustained Winds:** 85 mph
- **Current Movement:** N at 14 mph
- **FL Watches/Warnings:**
 - **Storm Surge Warning:** Nona

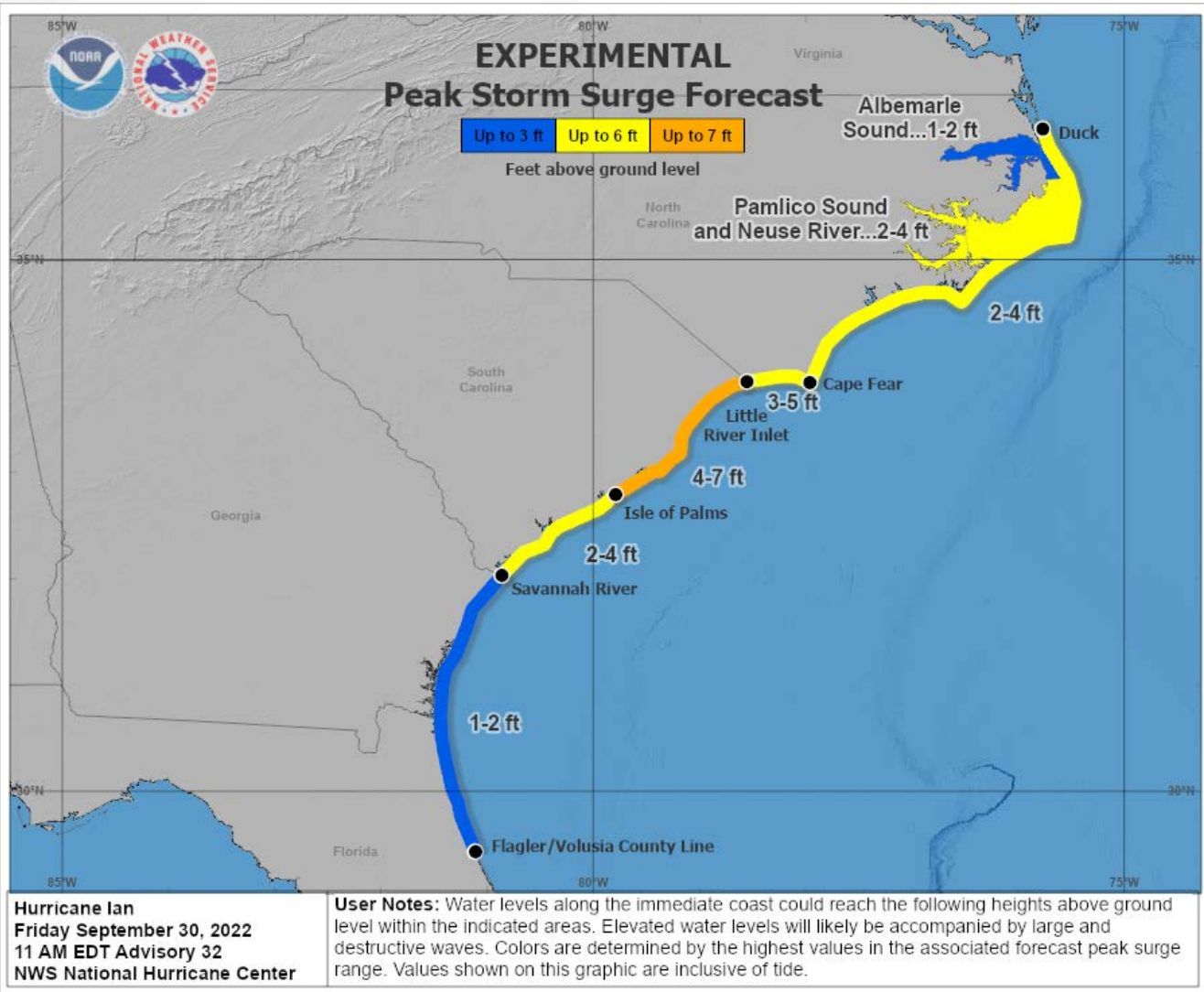
Impacts to Florida will continue to decrease today. The center of Ian will reach the coast of South Carolina today, and then move farther inland the Carolinas tonight and Saturday.

Hurricane-force winds extend outward up to 70 miles from the center and tropical-storm-force winds extend outward up to 485 miles to the northeast of the center. Winds are decreasing across the state, but the strongest winds remain along the Northeast Florida coast.



Expected Surge Levels – Next 12 Hours

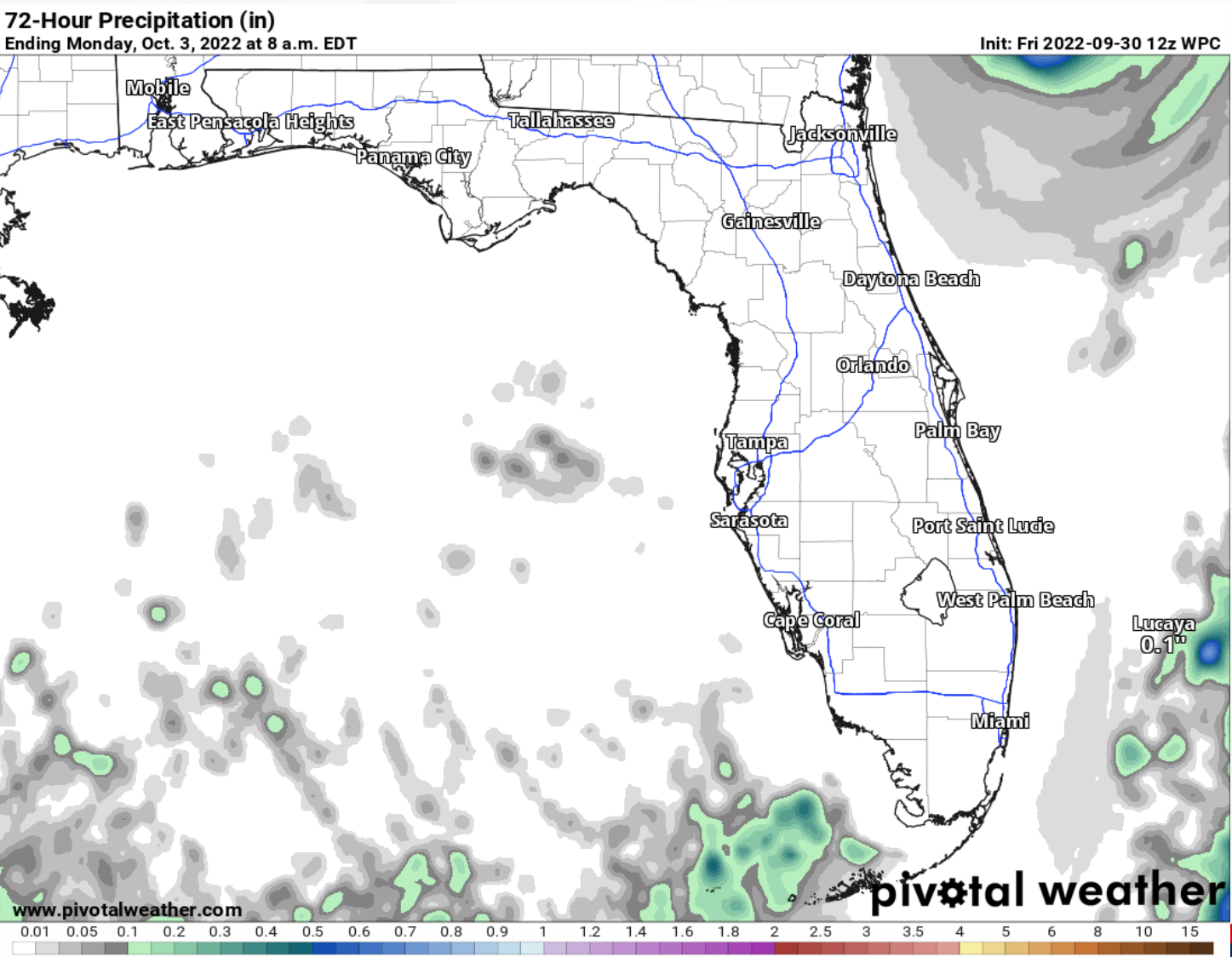
In Effect Until Further Notice





3-Day Forecast Rainfall

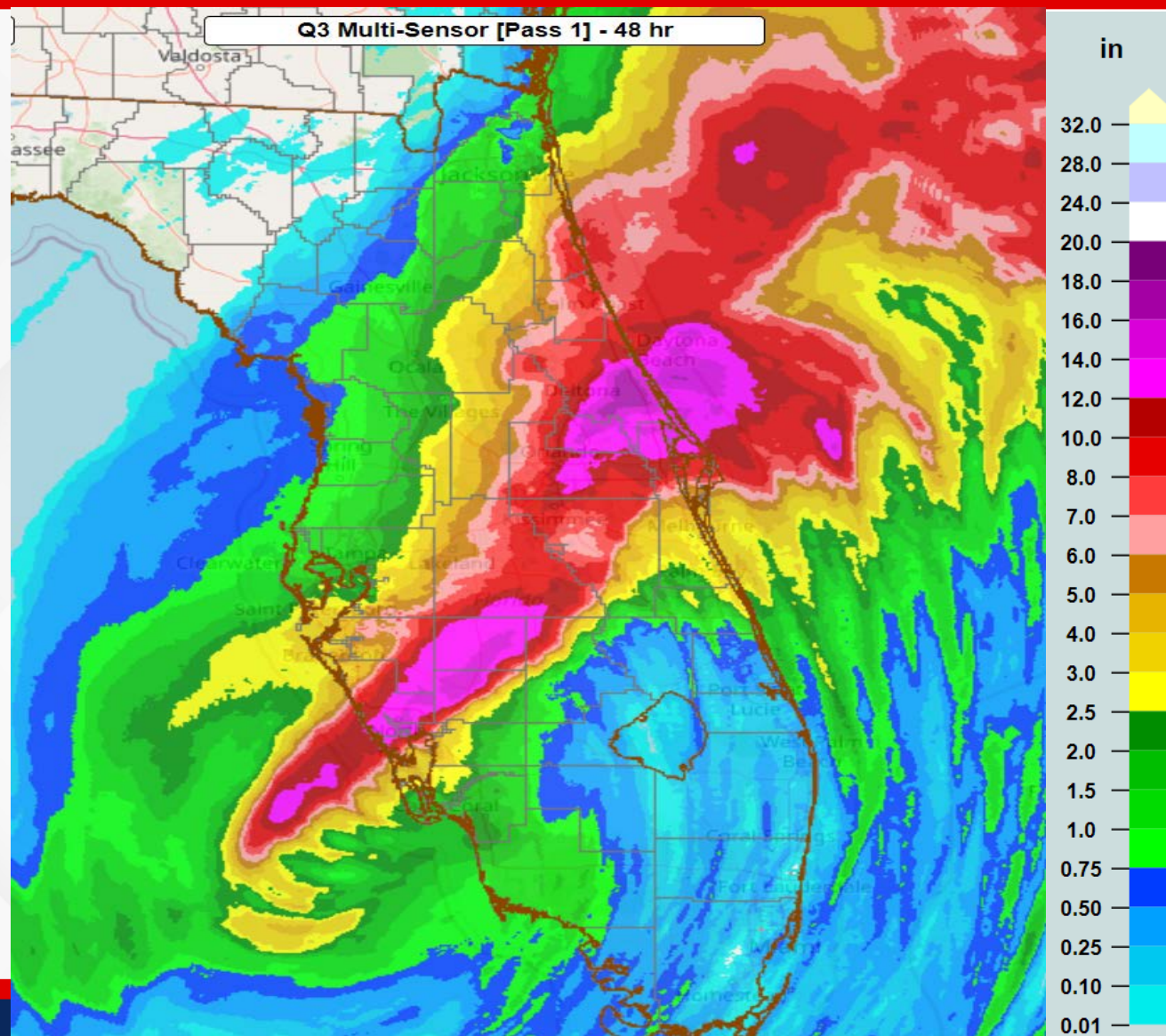
From the Weather Prediction Center



No rainfall in the forecast for at least the next 72 hours!



48-Hour Rainfall Totals



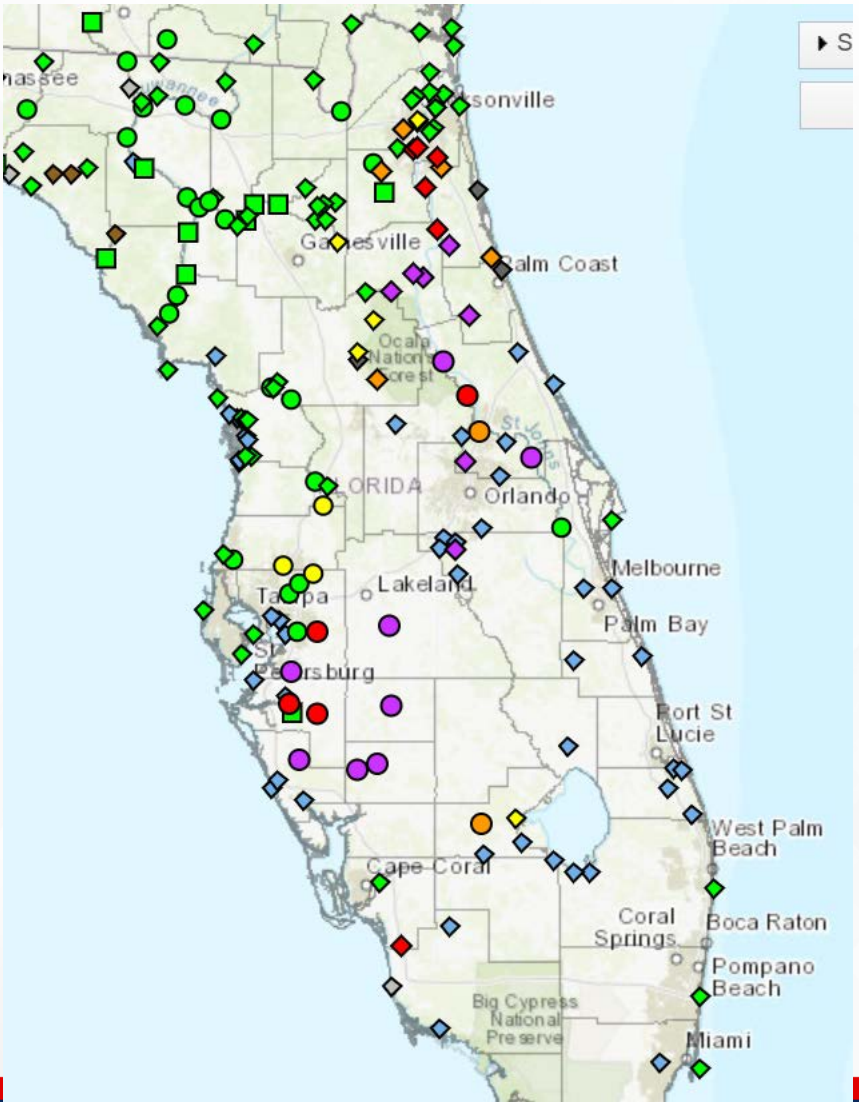
Widespread rainfall totals of 10-20" have been observed along the I-4 corridor.



Current River Observations

As of Friday Morning

Status
Major Flooding
Moderate Flooding
Minor Flooding
Near Flood Stage
No Flooding
Flood Categories Not Defined
Low Water Threshold
Observation Not Current
Out of Service



Many rivers across Peninsula and Northeast Florida are forecast to reach **moderate to major flood** stage over the next several days, and river flooding will likely continue for days after the rainfall ends.



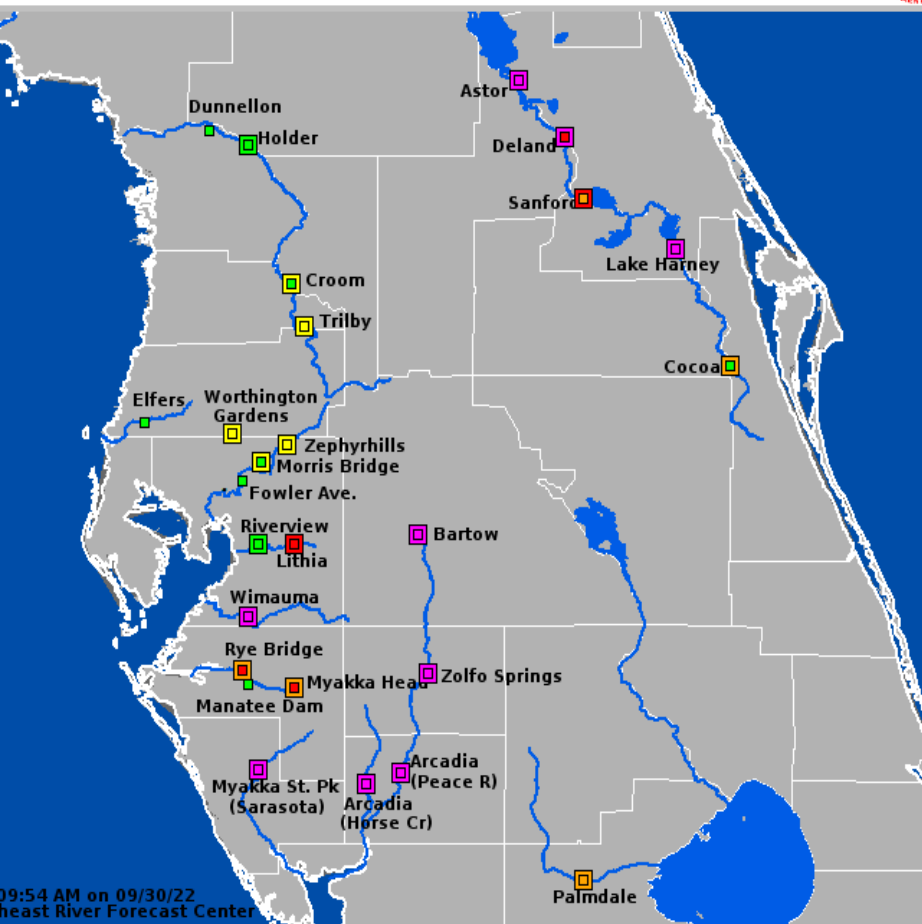
Latest River Forecasts

As of Friday Morning

FOUO – For Government Official Use Only

Central Florida

Valid: 09/30/2022 @ 09:54 AM



09:54 AM on 09/30/22
East River Forecast Center



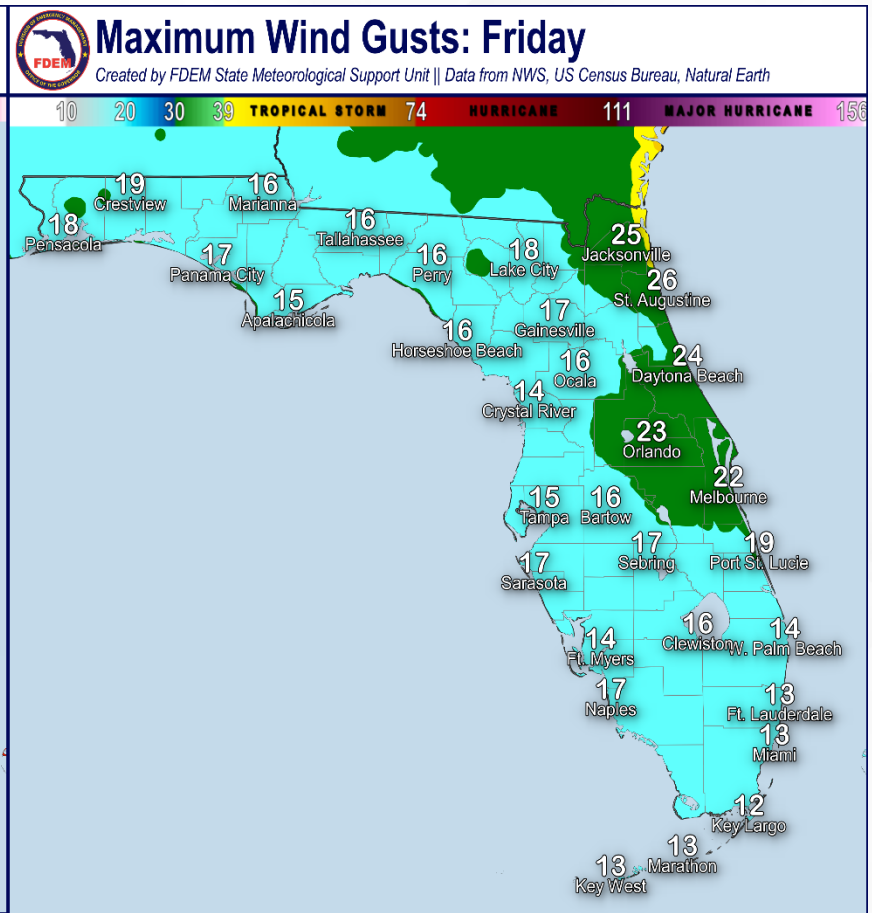
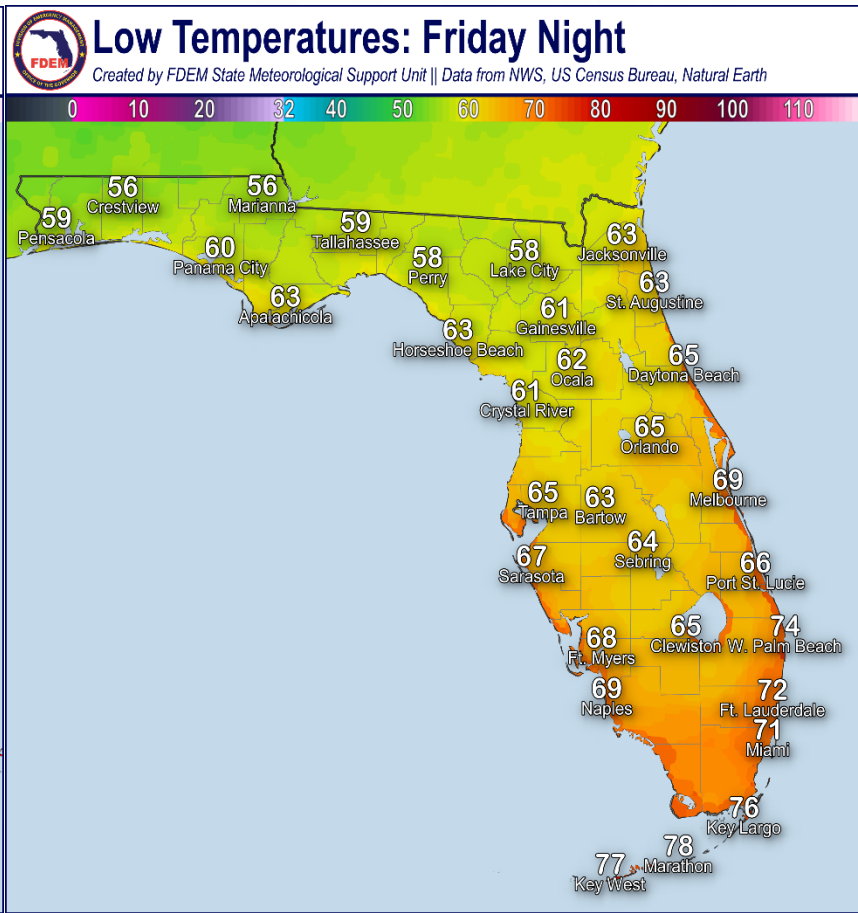
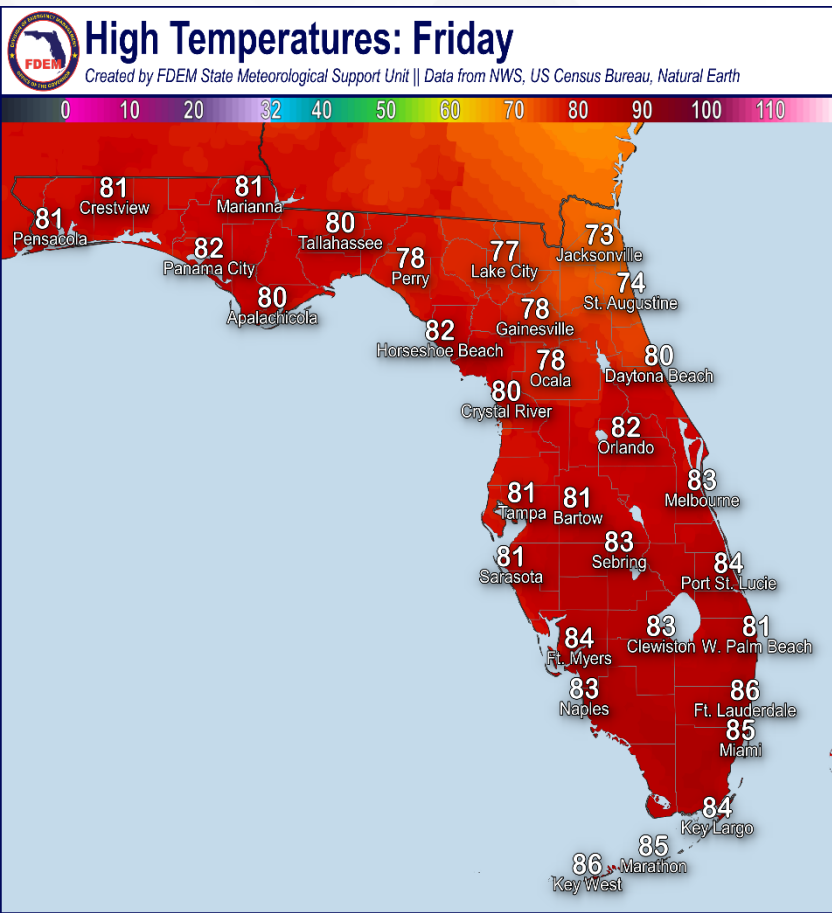
River Gauges	County(ies) Affected	Status	Crest Level	Crest Day	Current Level	Below Flood Stage Day
Fisheating Creek at Palmdale	Glades	RISING	MINOR: 7.4 ft.	10/1	MINOR: 7.13 ft.	10/4
Horse Creek near Arcadia	Desoto	FALLING	RECORD 21.24ft.	9/29	MAJOR: 19.02 ft.	10/7
Peace River at Arcadia	Desoto	RISING	RECORD: 24 ft.	9/30	RECORD: 25.31 ft.	Beyond 10/8
Peace River at Zolfo Springs	Hardee	FALLING	RECORD: 27.2 ft.	9/29	RECORD: 27.02 ft.	Beyond 10/8
Peace River at Bartow	Polk	RISING	MAJOR: 10.3 ft.	10/2	MAJOR: 10.1 ft.	Beyond 10/8
Myakka River at Myakka River State Park	Sarasota	CRESTING	RECORD: 12.7 ft.	9/30	MAJOR: 12.3 ft.	Beyond 10/8
Manatee River at Myakka Head	Manatee	FALLING	MAJOR: 19.3 ft.	9/29	MODERATE: 15.8 ft.	10/1
Manatee River at Rye Bridge	Manatee	FALLING	MAJOR: 17.2 ft.	9/29	MODERATE: 14.3 ft.	10/1
Little Manatee River near Wimauma	Manatee, Hillsborough	FALLING	MAJOR: 17.56 ft.	9/30	MAJOR: 17.3 ft.	10/3
Alafia River at Lithia	Hillsborough	RISING	MODERATE: 18.6 ft.	10/1	MODERATE: 17.8 ft.	10/4
Shingle Creek at Campbell	Osceola	CRESTING	RECORD: 63.7 ft.	9/30	RECORD: 63.7 ft.	Beyond 10/8
Little Wekiva River near Altamonte Springs	Seminole, Orange	FALLING	RECORD: 31.09 ft.	9/29	RECORD 30.65 ft.	10/4
St. Johns River near Lake Harney	Seminole, Volusia	RISING	MAJOR: 11.6 ft.	10/1	MAJOR: 10.8 ft.	Beyond 10/8
St. Johns River near Sanford	Seminole, Volusia	RISING	MODERATE: 7.6 ft.	10/4	MINOR: 6.5 ft.	Beyond 10/8
St. Johns River near Deland	Volusia, Lake	RISING	MAJOR: 5.5 ft.	10/4	MODERATE: 5.03 ft.	Beyond 10/8
St. Johns River at Astor	Lake, Volusia	CRESTING	RECORD: 4.6 ft.	9/30	MAJOR: 4.57 ft.	Beyond 10/8

For more details on the hydrographs as well as impact statements, click the links for each river gauge.



Forecast Temperatures and Wind Gusts

Friday





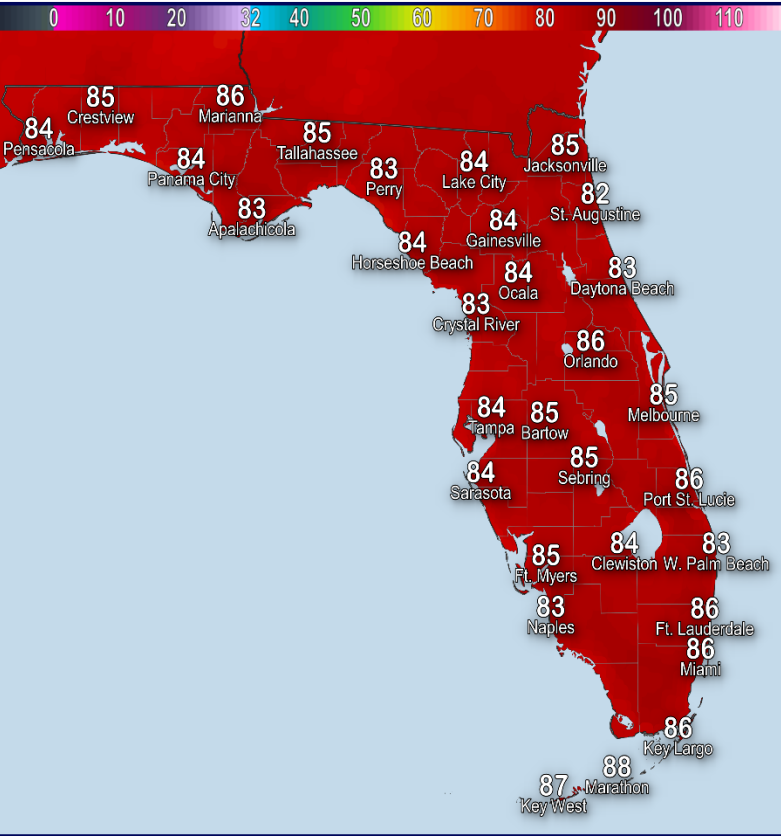
Forecast Temperatures and Wind Gusts

Saturday



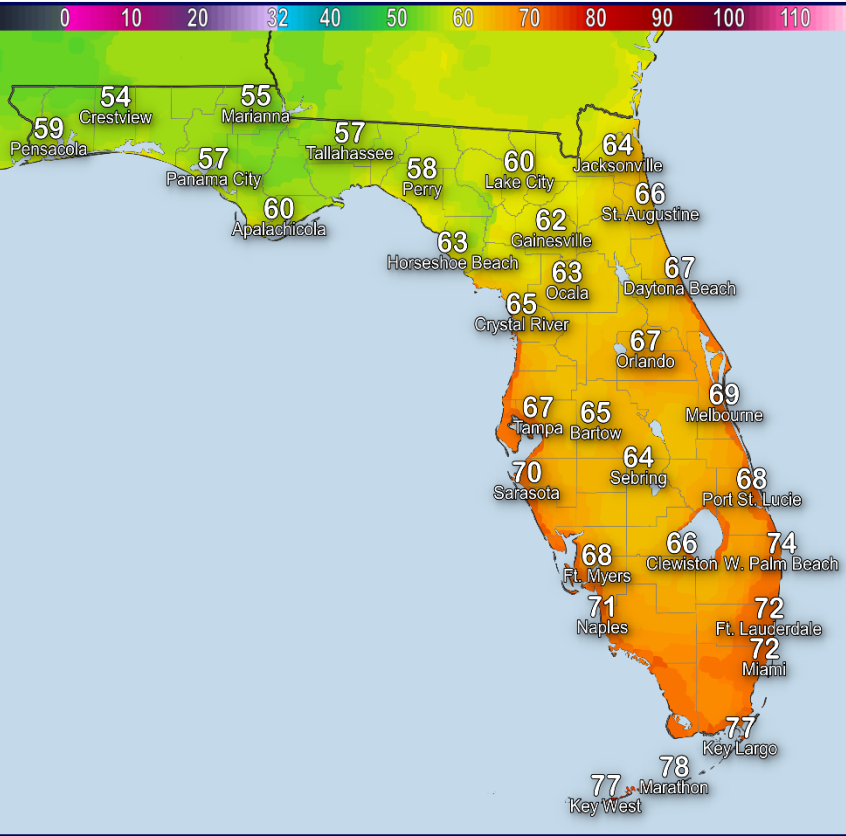
High Temperatures: Saturday

Created by FDEM State Meteorological Support Unit || Data from NWS, US Census Bureau, Natural Earth



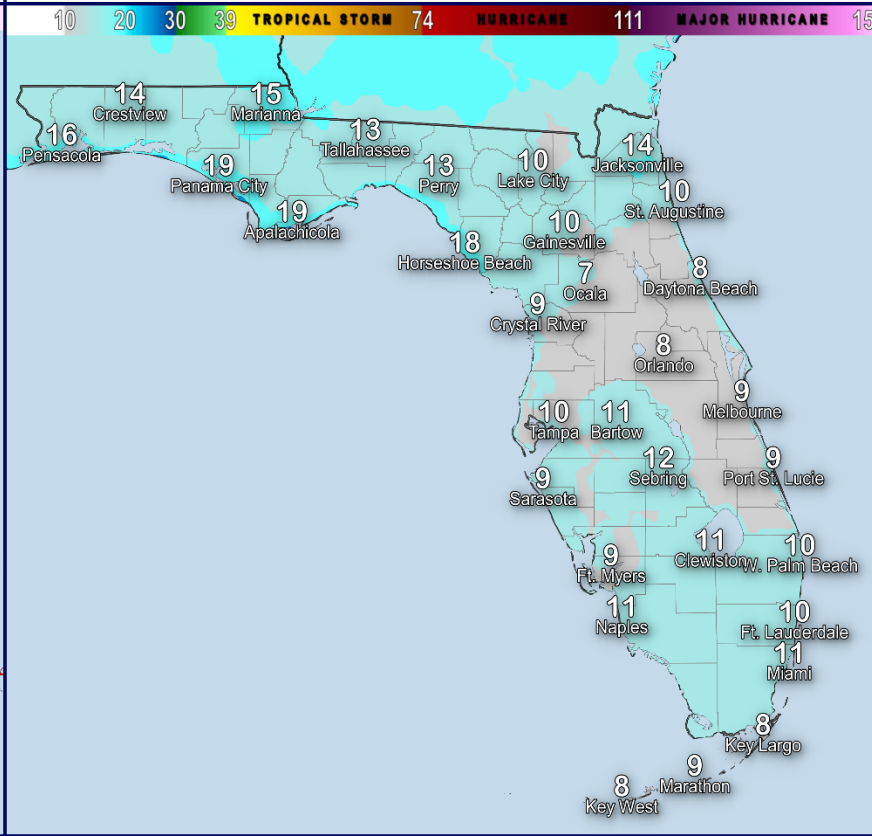
Low Temperatures: Saturday Night

Created by FDEM State Meteorological Support Unit || Data from NWS, US Census Bureau, Natural Earth



Maximum Wind Gusts: Saturday

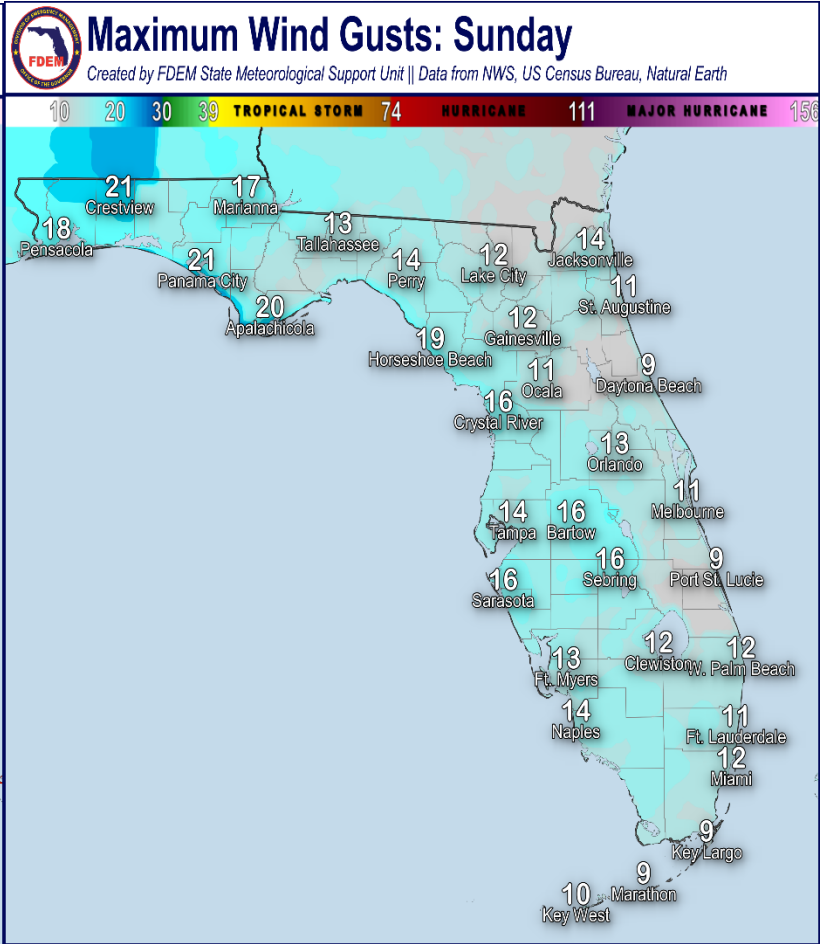
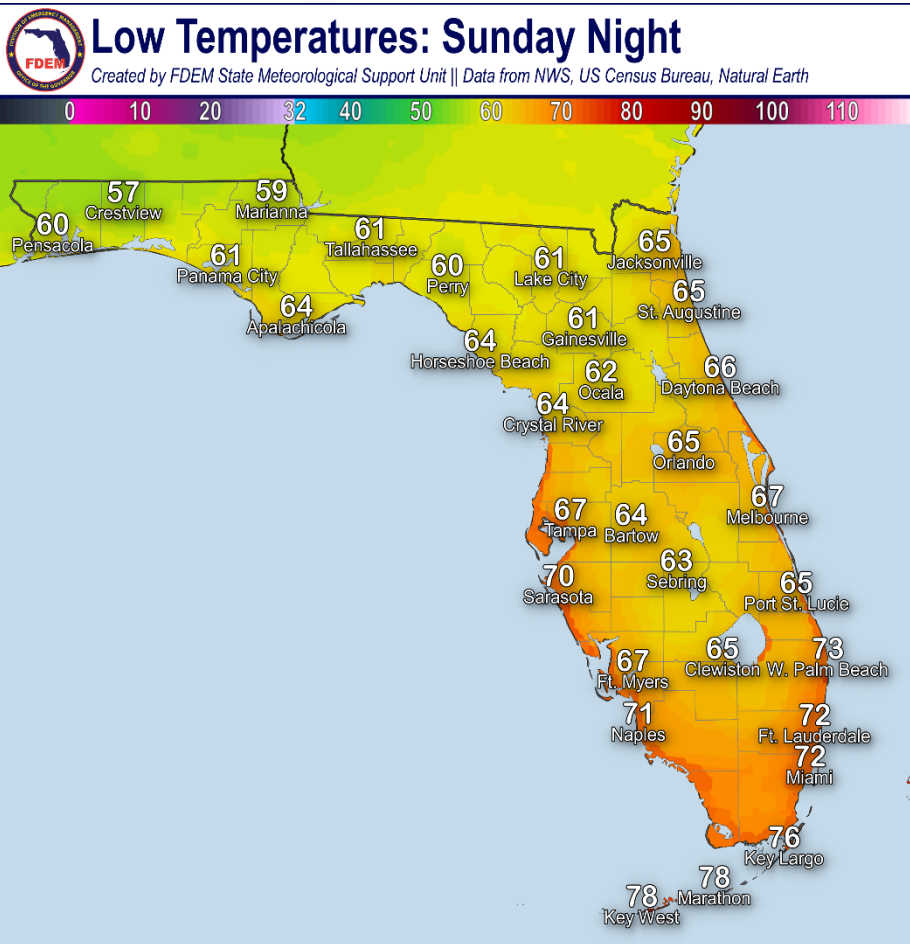
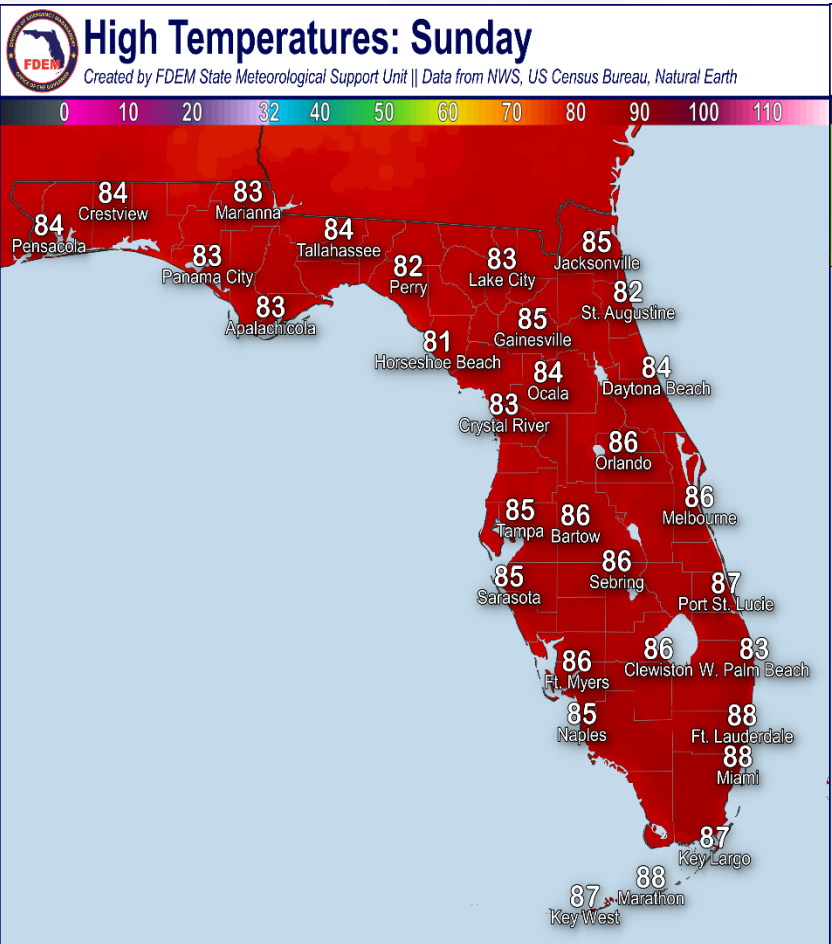
Created by FDEM State Meteorological Support Unit || Data from NWS, US Census Bureau, Natural Earth





Forecast Temperatures and Wind Gusts



Sunday

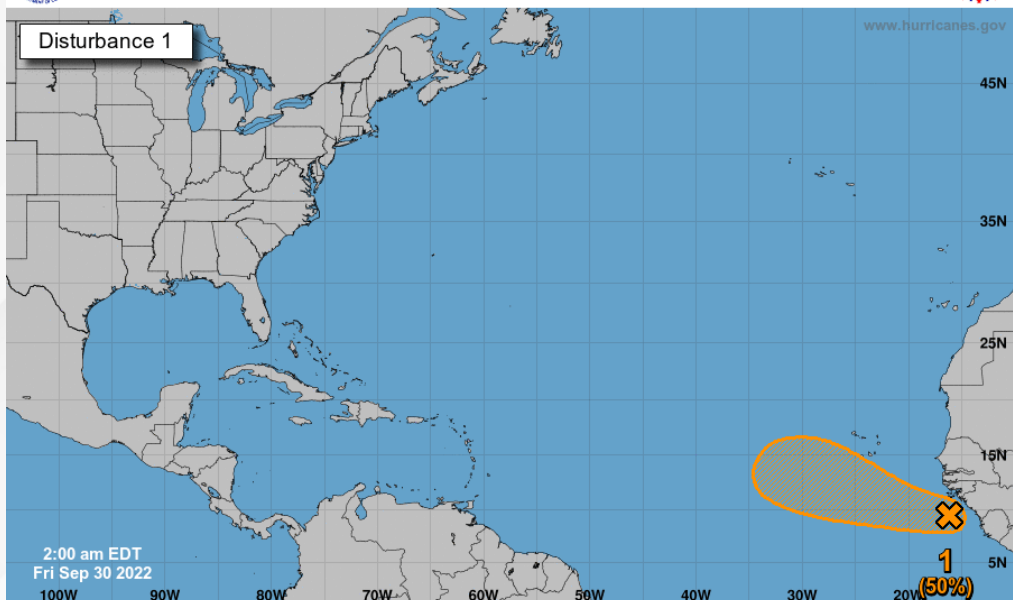











Tropical Weather Outlook

Disturbance 1 ([LINK](#))

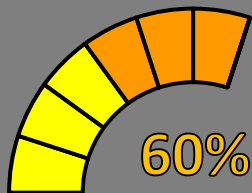
 **Five-Day Graphical Tropical Weather Outlook**
National Hurricane Center Miami, Florida 



Current Disturbances and Five-Day Cyclone Formation Chance:  < 40%  40-60%  > 60%
Tropical or Sub-Tropical Cyclone:  Depression  Storm  Hurricane
 Post-Tropical Cyclone or Remnants

 10%

48 Hour Formation

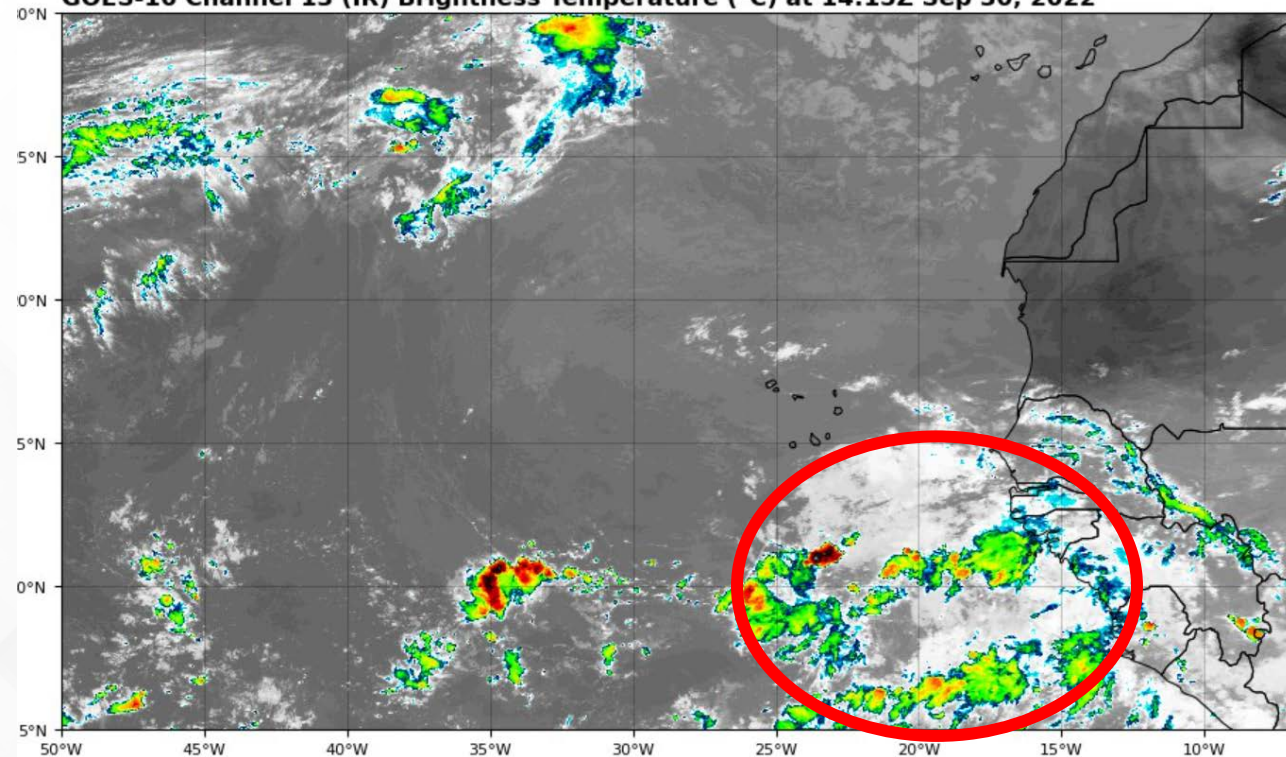


60%

5 Day Formation

A tropical wave is producing disorganized showers and thunderstorms over the far eastern tropical Atlantic. Environmental conditions are forecast to be conducive for gradual development of this system, and a tropical depression could form early next week as the system moves westward to west-northwestward over the eastern tropical Atlantic. *This system poses no threat to Florida.*

GOES-16 Channel 13 (IR) Brightness Temperature (°C) at 14:15Z Sep 30, 2022



FOUO – For Government Official Use Only



Summary

Hurricane Ian:

- At 11:00 AM EDT Friday, Hurricane Ian was located about 200 miles northeast of Jacksonville, Florida, or 60 miles east-southeast of Charleston, South Carolina, and moving north at 14 mph.
- Ian is forecast to make landfall along the coast of South Carolina on this evening and move inland across the Carolinas through Saturday.
- Maximum sustained winds have increased to near 85 mph, which is a Category 1 hurricane. Little change in strength is expected before Ian reaches the coast later today. Rapid weakening is expected after landfall, and Ian is forecast to become an extratropical low over North Carolina tonight or on Saturday. The low is then expected to dissipate by Saturday night.

African Tropical Wave:

- A tropical wave is producing disorganized showers and thunderstorms over the far eastern tropical Atlantic. Environmental conditions are forecast to be conducive for gradual development of this system, and there is a 60% chance of this wave becoming a tropical depression by early next week as the system moves westward to west-northwestward over the eastern Atlantic.

Florida Outlook:

- **Tropical Storm and Storm Surge Warnings** have been cancelled for all Florida counties.
- However, lingering coastal flooding and storm surge of 1-2 feet will continue to affect Florida's Northeast Coast and along St. Johns River through Saturday.
- Widespread rainfall totals of 10-20" have been observed along the I-4 corridor, yielding catastrophic flooding across Florida's Peninsula.
- Major to record river flooding is occurring along many West and Central Florida waterways, with additional flood concerns developing across Northeast Florida.
- The African tropical wave poses no threat to Florida.

The next briefing packet will be issued Saturday. For the latest information, please visit the [National Hurricane Center website](#).



Tropical Update

FOUO – For Government Official Use Only



Created by:

Amy Godsey, Chief State Meteorologist

Amy.Godsey@em.myflorida.com

State Meteorological Support Unit

Florida Division of Emergency Management

Users wishing to subscribe (approval pending) to this distribution list, register at:

https://public.govdelivery.com/accounts/FLDEM/subscriber/new?topic_id=SERT_Met_Tropics.

Other reports available for subscription are available at:

<https://public.govdelivery.com/accounts/FLDEM/subscriber/new?preferences=true>