



TROPICAL UPDATE

11 AM EDT

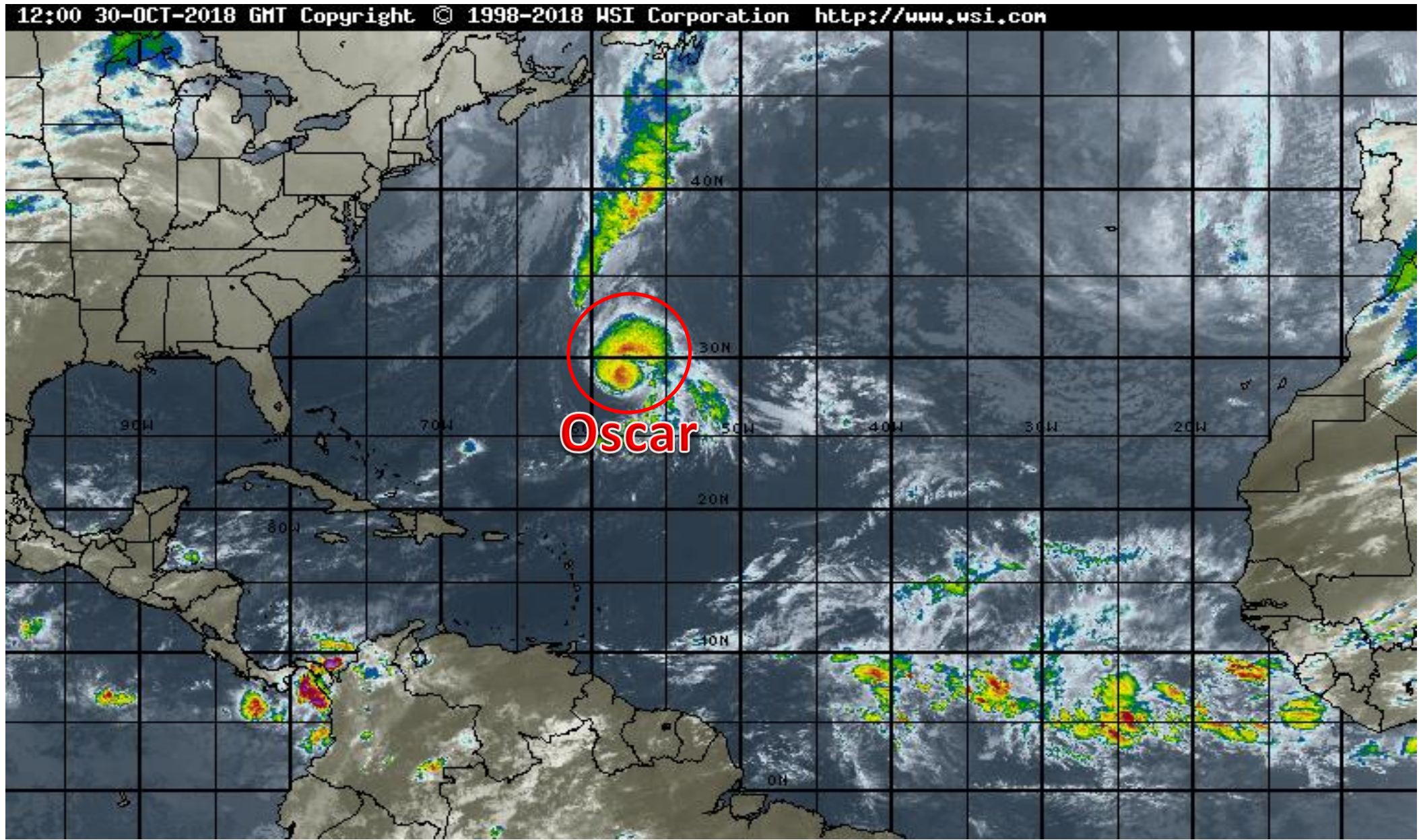
Tuesday, October 30, 2018

Hurricane Oscar &

Severe Weather Threat Thursday

This update is intended for government and emergency response officials, and is provided for informational and situational awareness purposes only. Forecast conditions are subject to change based on a variety of environmental factors. For additional information, or for any life safety concerns with an active weather event please contact your County Emergency Management or Public Safety Office, local National Weather Service forecast office or visit the National Hurricane Center website at www.nhc.noaa.gov and Storm Prediction Center at www.spc.noaa.gov.

Atlantic Basin Satellite Image





Five-Day Graphical Tropical Weather Outlook

National Hurricane Center Miami, Florida



www.hurricanes.gov

All Disturbances

NHC is issuing advisories on Oscar.
No additional tropical development
is expected over the next 5 days.

OSCAR



8:00 am EDT
Tue Oct 30 2018

100W 90W 80W 70W 60W 50W 40W 30W 20W

45N

35N

25N

15N

5N

Current Disturbances and Five-Day Cyclone Formation Chance: < 40% 40-60% > 60%

Tropical or Sub-Tropical Cyclone: Depression Storm Hurricane

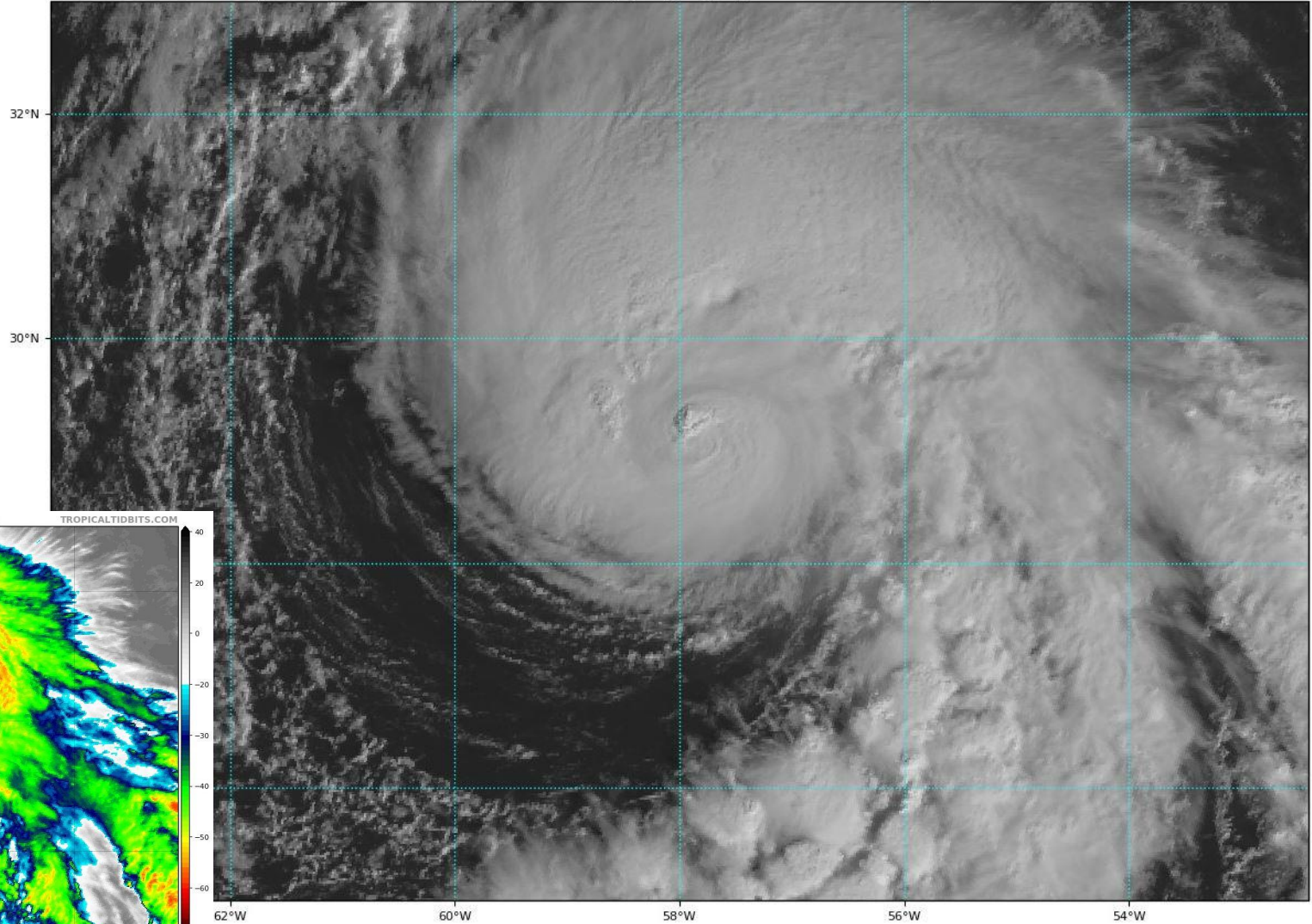
Post-Tropical Cyclone or Remnants

Hurricane Oscar Satellite Image

Oscar has continued to grow in size and strengthen. However, dry air is becoming wrapped into the system and wind shear is increasing. Oscar has likely reached peak intensity.

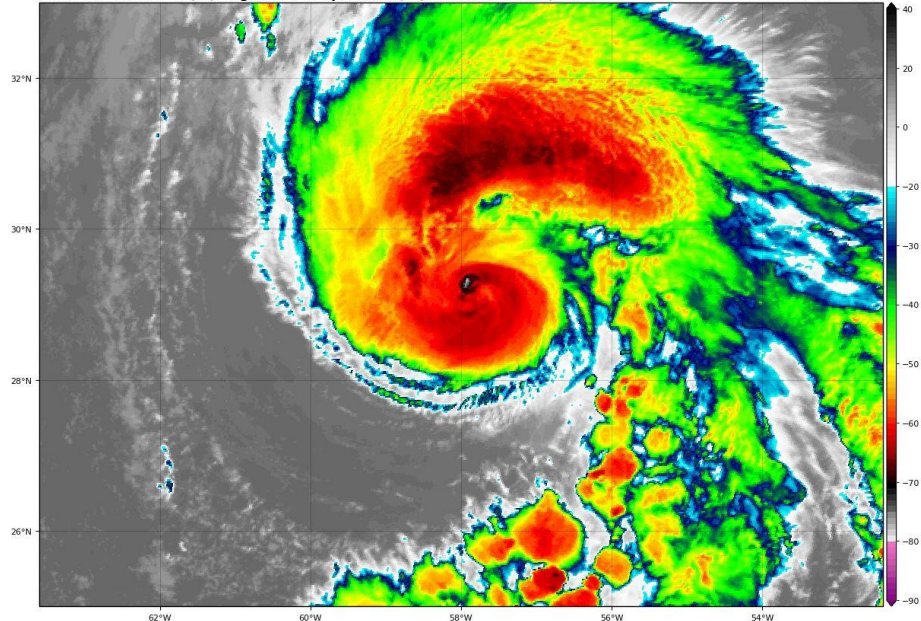
GOES-16 Channel 2 (visible) / Channel 7 (shortwave IR) [Day/Night] at 12:35Z Oct 30, 2018

TROPICALTIDBITS.COM

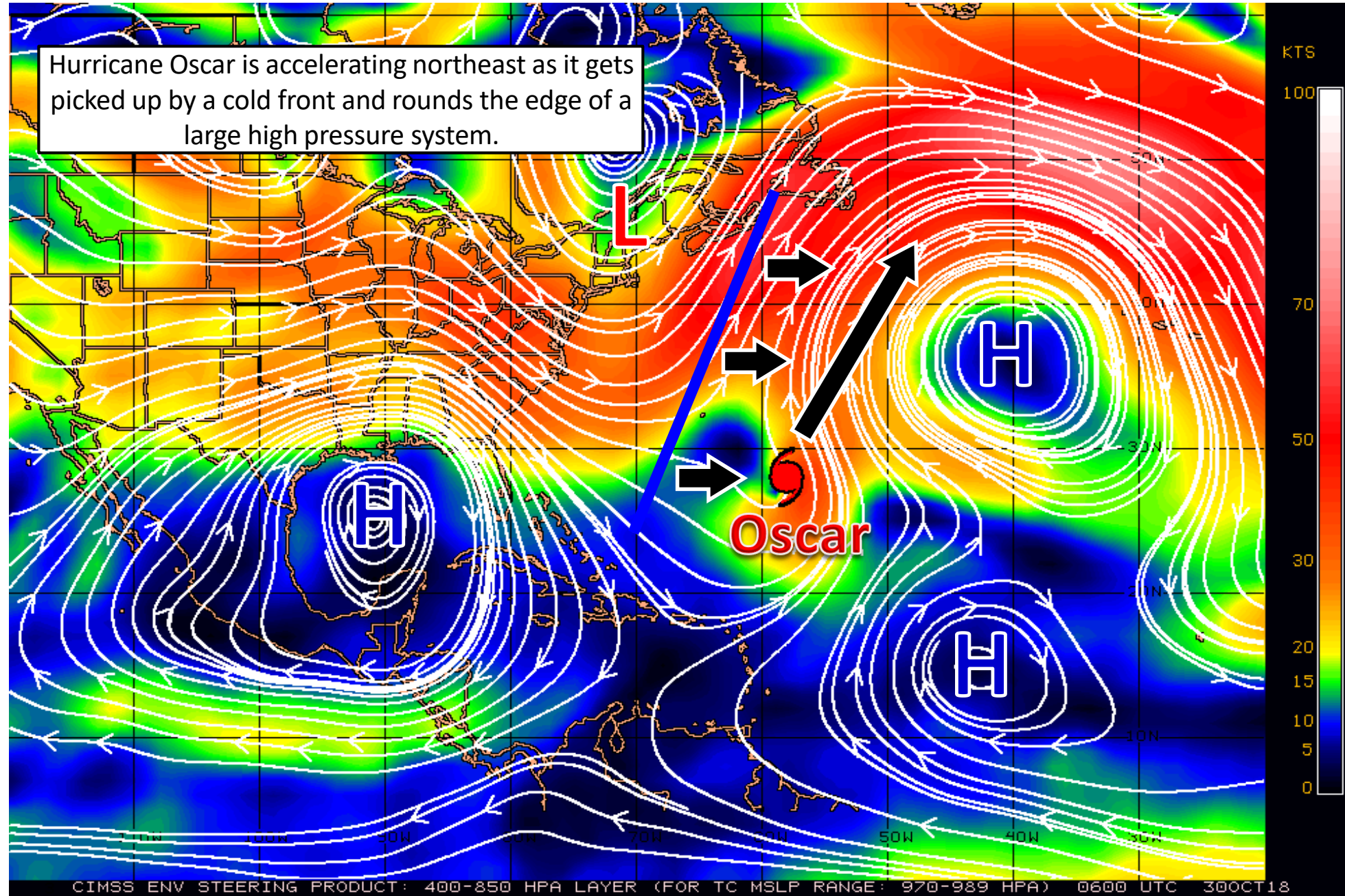


GOES-16 Channel 13 (IR) Brightness Temperature (°C) at 12:35Z Oct 30, 2018

TROPICALTIDBITS.COM



Steering Currents





Note: The cone contains the probable path of the storm center but does not show the size of the storm. Hazardous conditions can occur outside of the cone.



FORECAST MAX WINDS

INIT 100 MPH

12H 90 MPH

24H 90 MPH

36H 85 MPH*

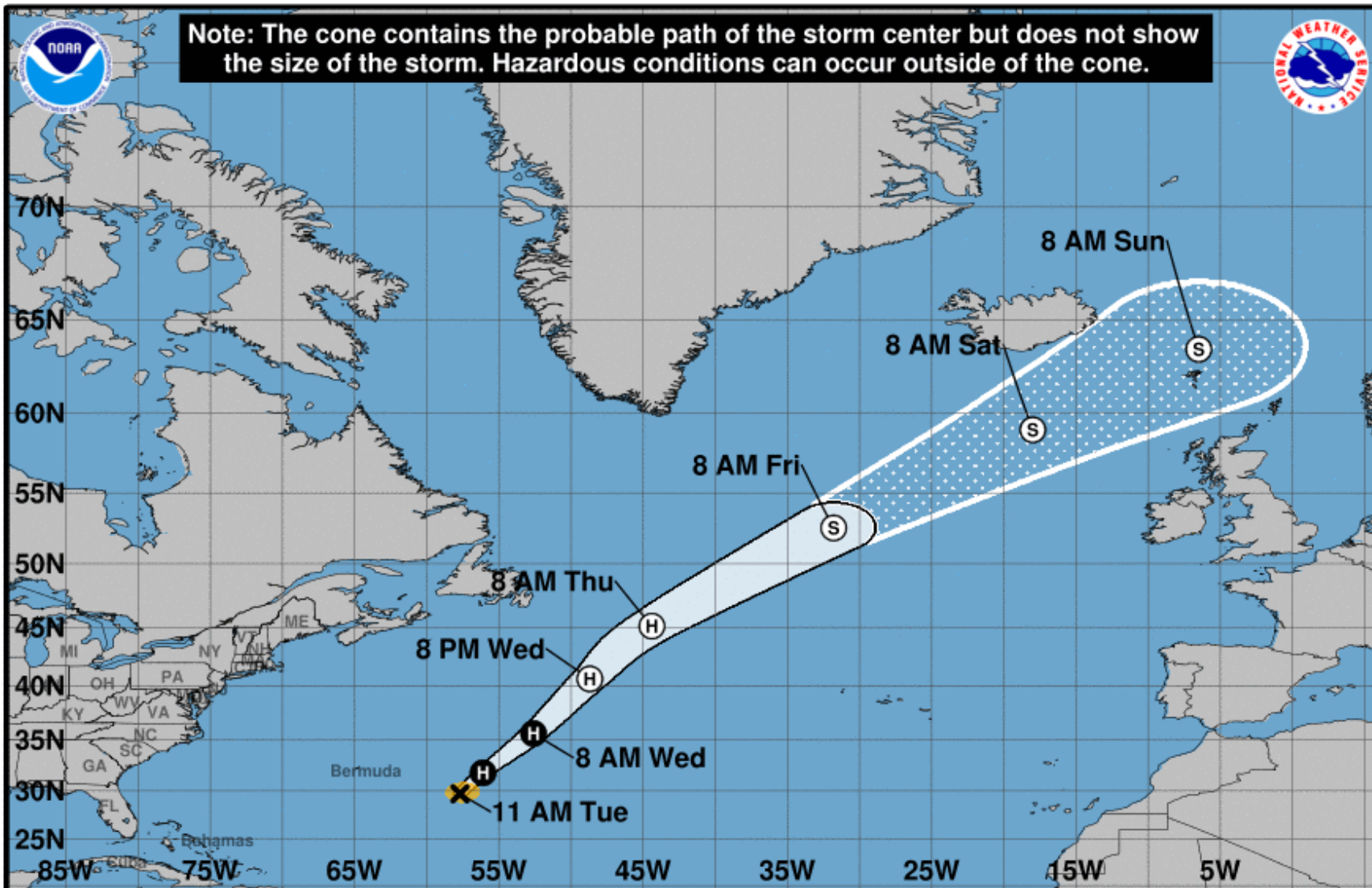
48H 75 MPH*

72H 65 MPH*

96H 60 MPH*

120H 50 MPH*

*Post-Tropical



Hurricane Oscar

Tuesday October 30, 2018

11 AM AST Advisory 15

NWS National Hurricane Center

Current information: x

Center location 29.7 N 57.7 W

Maximum sustained wind 100 mph

Movement NNE at 14 mph

Forecast positions:

● Tropical Cyclone ○ Post/Potential TC

Sustained winds: D < 39 mph

S 39-73 mph H 74-110 mph M > 110 mph

Potential track area:

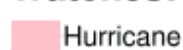


Day 1-3



Day 4-5

Watches:



Hurricane



Trop Stm

Warnings:

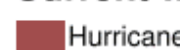


Hurricane



Trop Stm

Current wind extent:



Hurricane

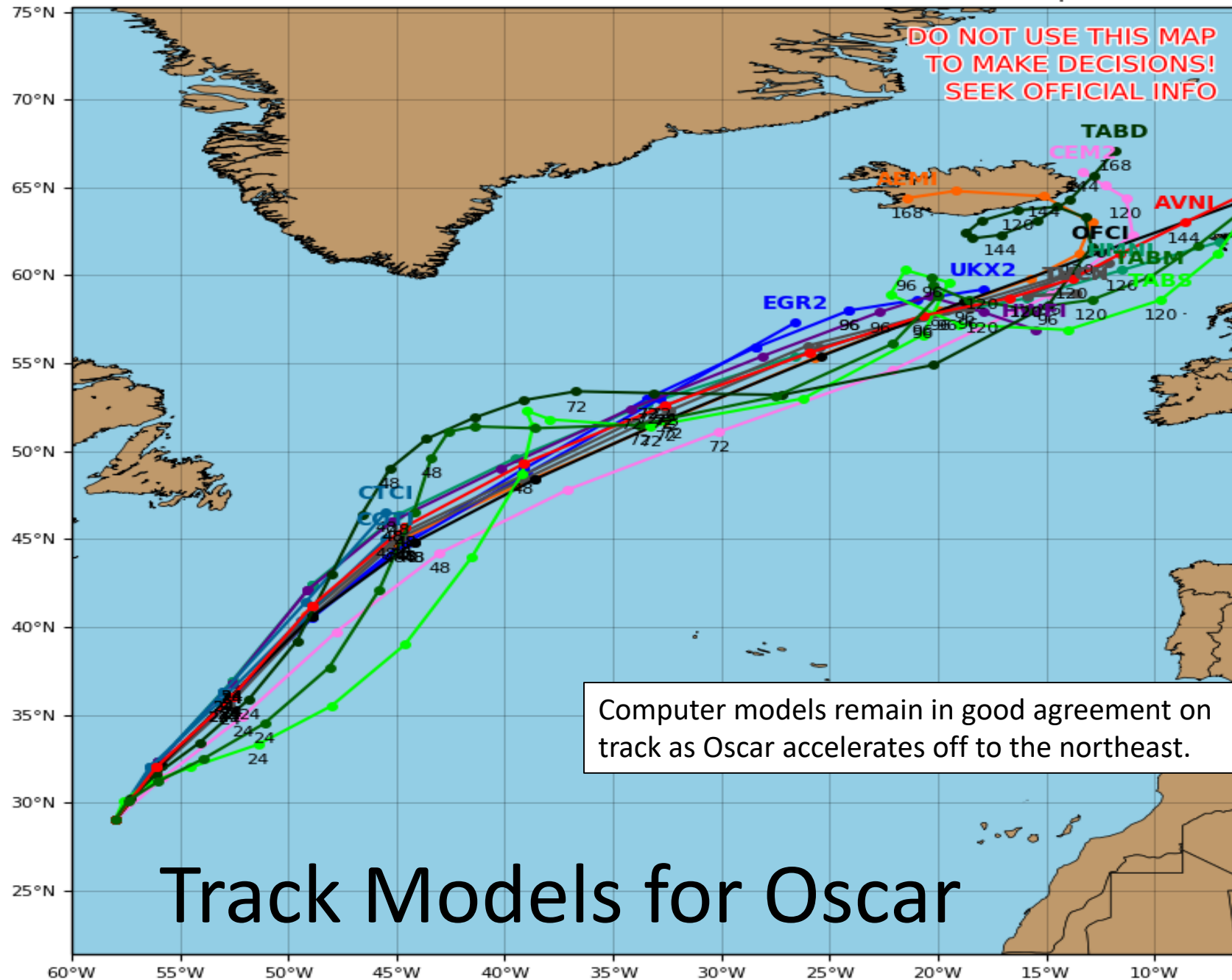


Trop Stm

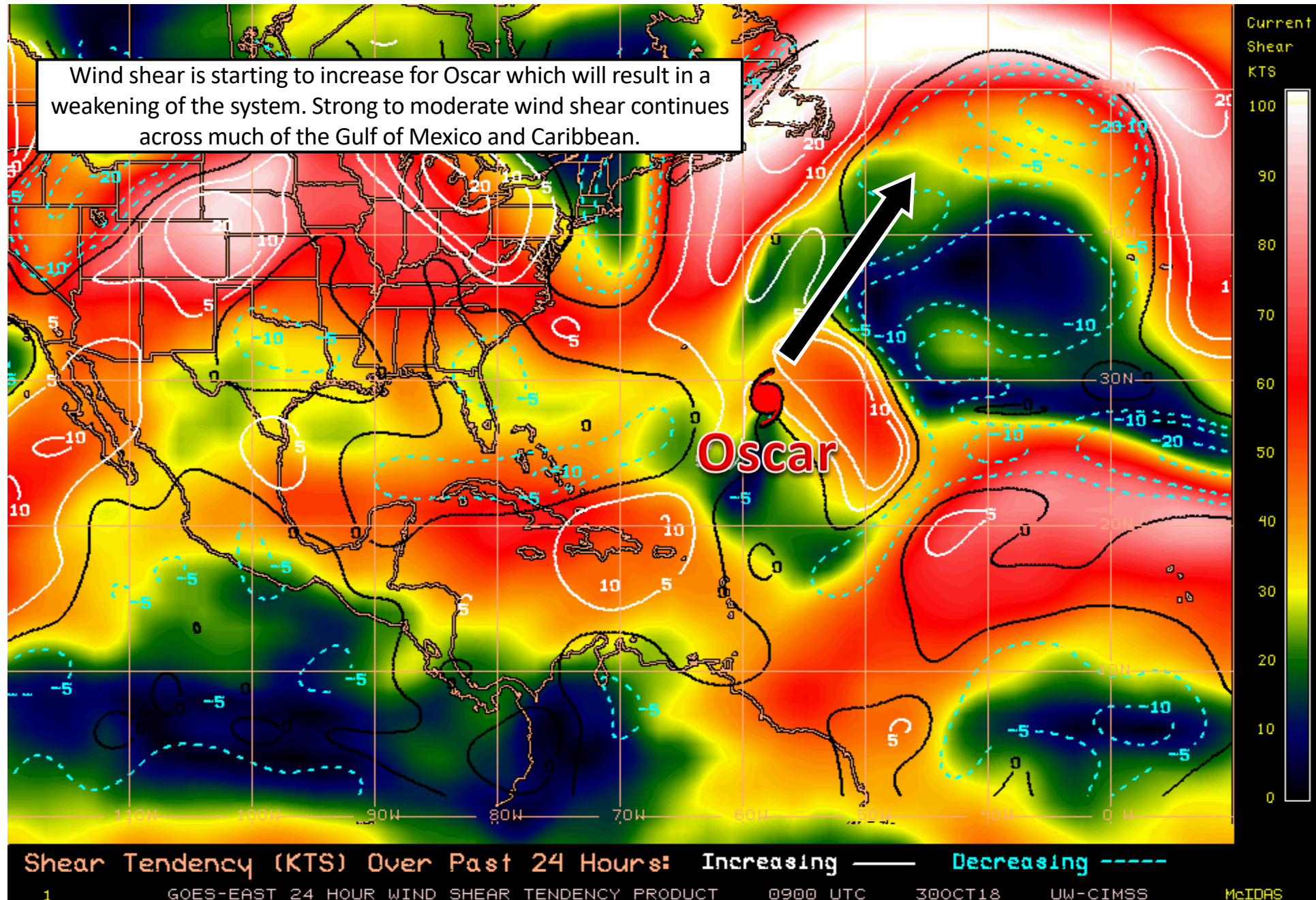
Hurricane OSCAR Model Track Guidance

Initialized at 12z Oct 30 2018

Levi Cowan - tropicaltidbits.com



Wind Shear (shaded) and Wind Shear Tendencies (contoured)

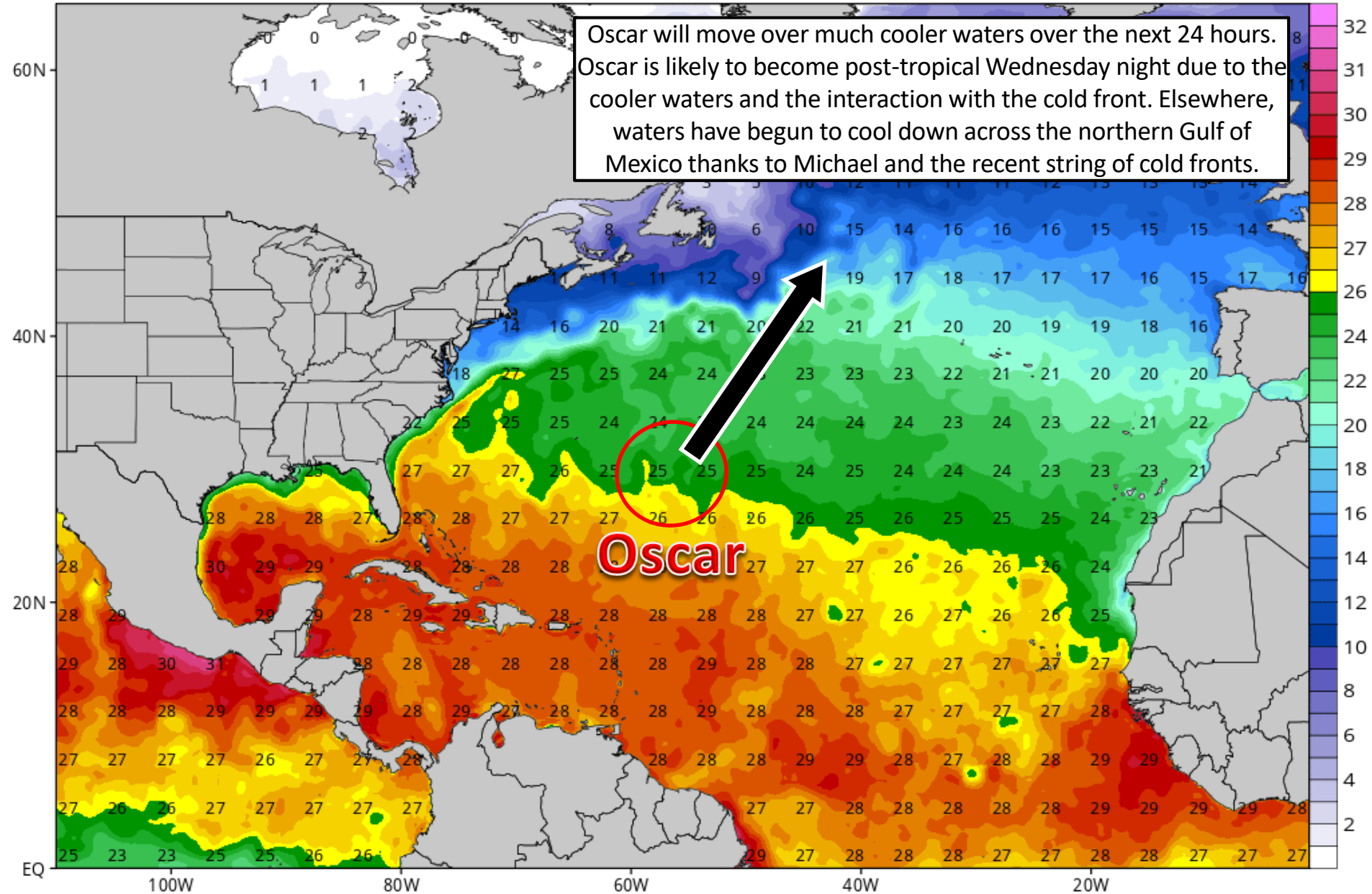


Current Sea Surface Temperatures

CDAS Sea Surface Temperature (°C)

Analysis Time: 06z Oct 30 2018

TROPICALTIDBITS.COM

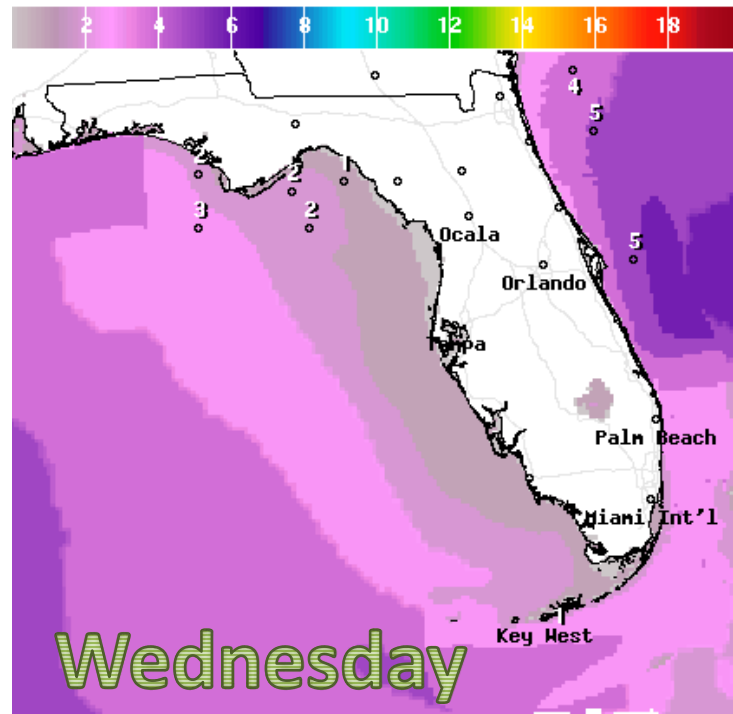


Initialized at 12z Oct 30 2018

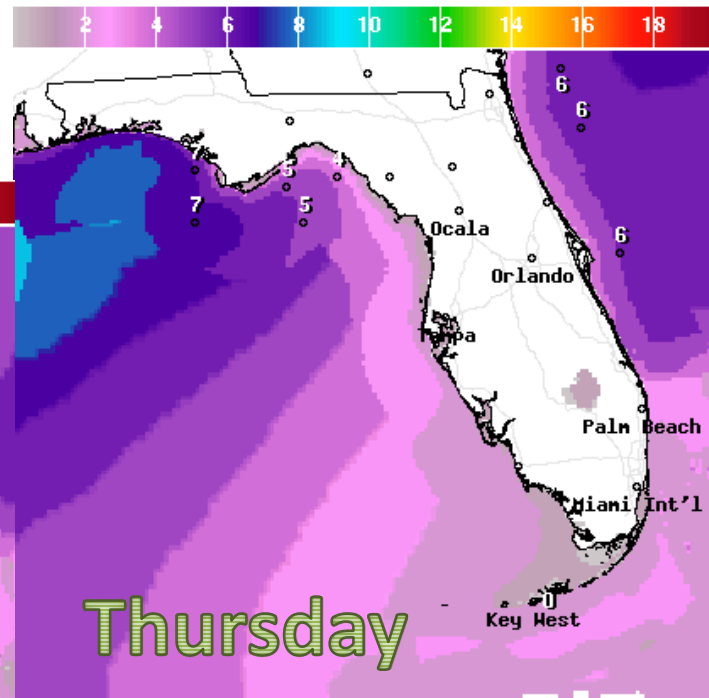
[illegible]

Forecast Wave Heights

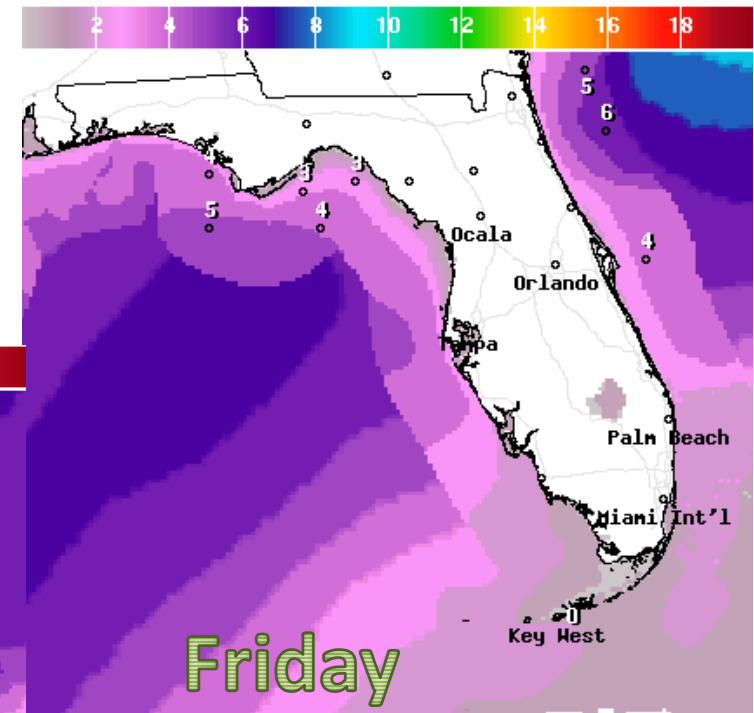
Ocean swells will increase the rip current threat along the East Coast mid-week. In addition, winds will become breezy with an approaching cold front and will also increase the rip current risk for the Panhandle as wave heights build.



Wave Height(ft) Ending Wed Oct 31 2018 8PM EDT
(Thu Nov 01 2018 00Z)
National Digital Forecast Database
12z issuance Graphic created-Oct 30 8:41AM EDT

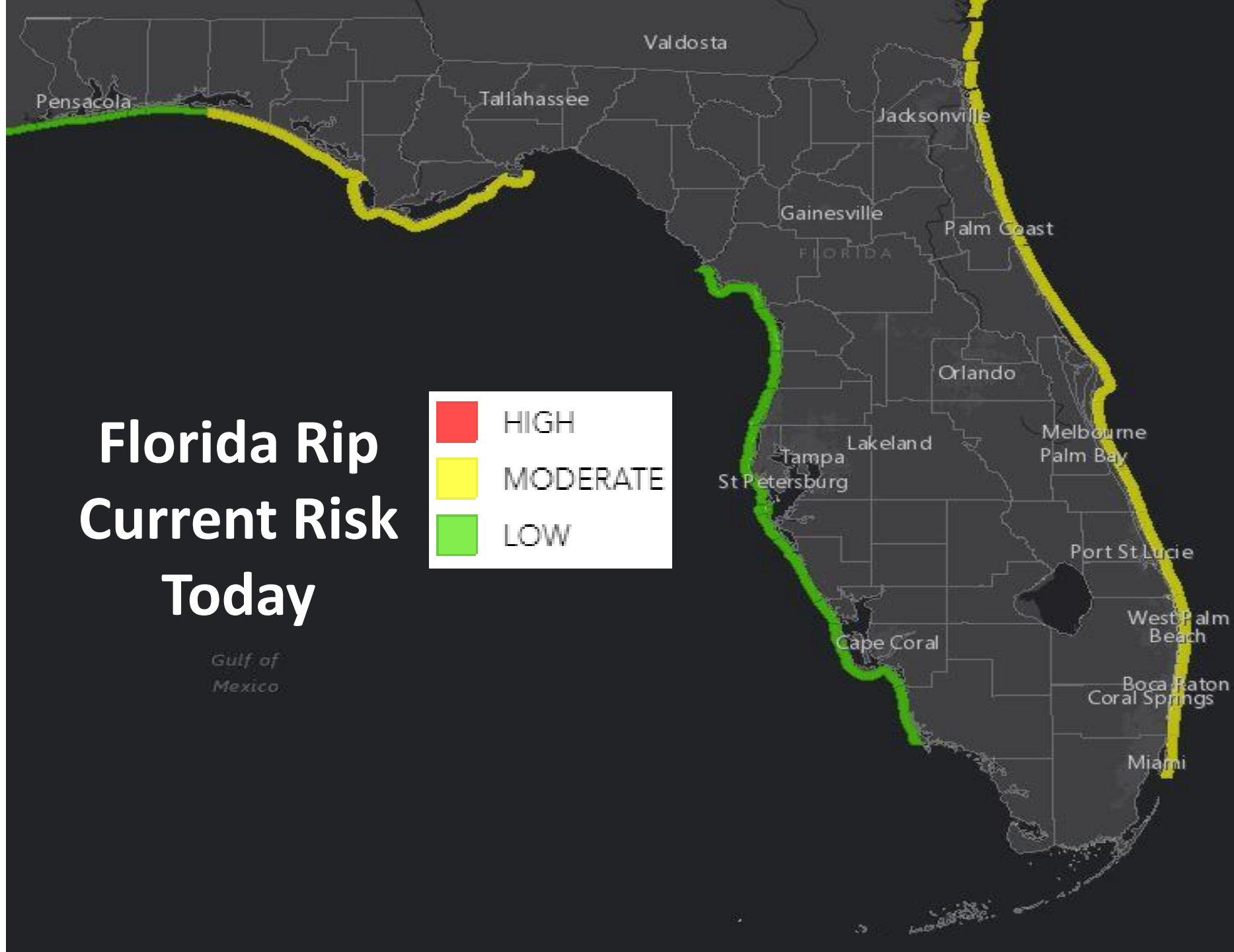
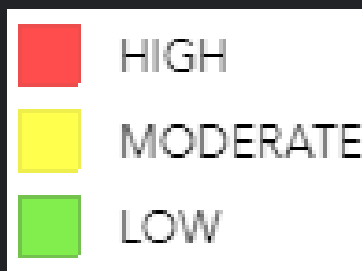


Wave Height(ft) Ending Thu Nov 01 2018 8PM EDT
(Fri Nov 02 2018 00Z)
National Digital Forecast Database
12z issuance Graphic created-Oct 30 9:01AM EDT



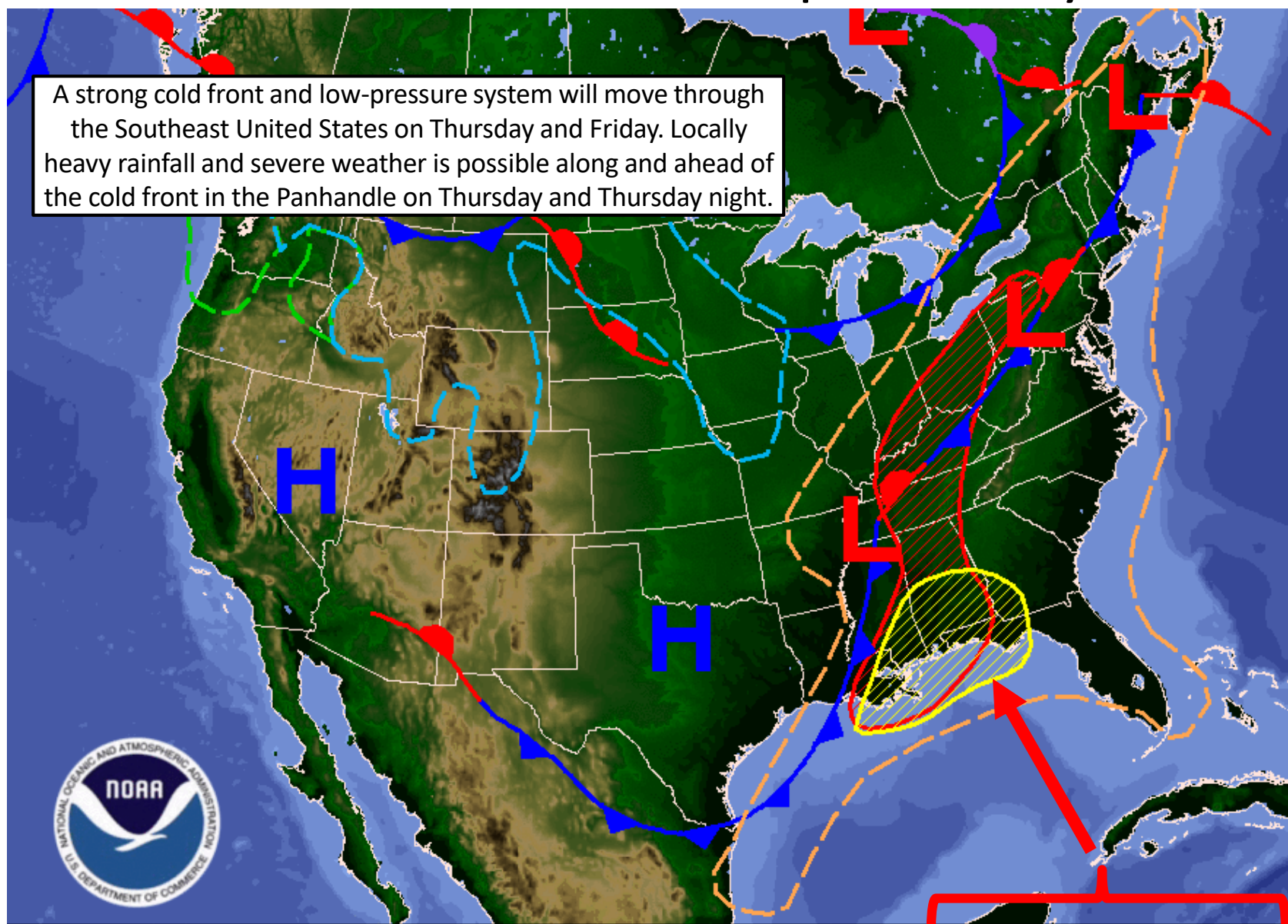
Wave Height(ft) Ending Fri Nov 02 2018 8PM EDT
(Sat Nov 03 2018 00Z)
National Digital Forecast Database
12z issuance Graphic created-Oct 30 8:42AM EDT

Florida Rip Current Risk Today



Forecast Surface Map Thursday

A strong cold front and low-pressure system will move through the Southeast United States on Thursday and Friday. Locally heavy rainfall and severe weather is possible along and ahead of the cold front in the Panhandle on Thursday and Thursday night.



Day 3 National Forecast Chart

Valid Thu, Nov 01, 2018, issued 5:11 AM EDT Tue, Oct 30, 2018
DOC/NOAA/NWS/NCEP/Weather Prediction Center
Prepared by McReynolds with WPC/SPC/NHC forecasts

Rain
Rain and T'Storms
Rain and Snow
Snow

Flash Flooding Possible (hatched)
Severe T'Storms Possible (hatched)
Freezing Rain Possible (hatched)
Heavy Snow Possible (hatched)

Severe Weather Outlook Thursday, November 01, 2018

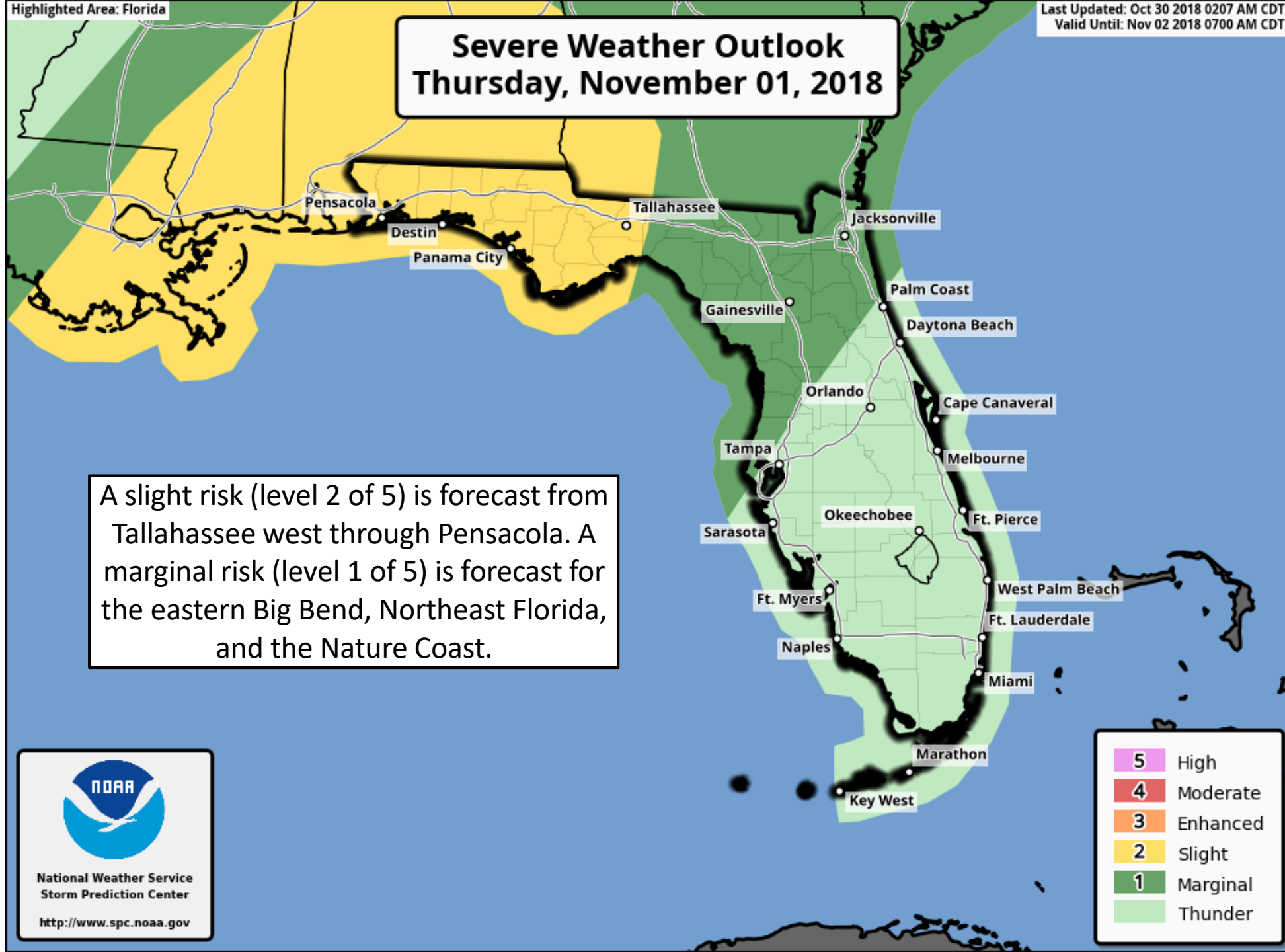
A slight risk (level 2 of 5) is forecast from Tallahassee west through Pensacola. A marginal risk (level 1 of 5) is forecast for the eastern Big Bend, Northeast Florida, and the Nature Coast.



National Weather Service
Storm Prediction Center

<http://www.spc.noaa.gov>

5	High
4	Moderate
3	Enhanced
2	Slight
1	Marginal
	Thunder

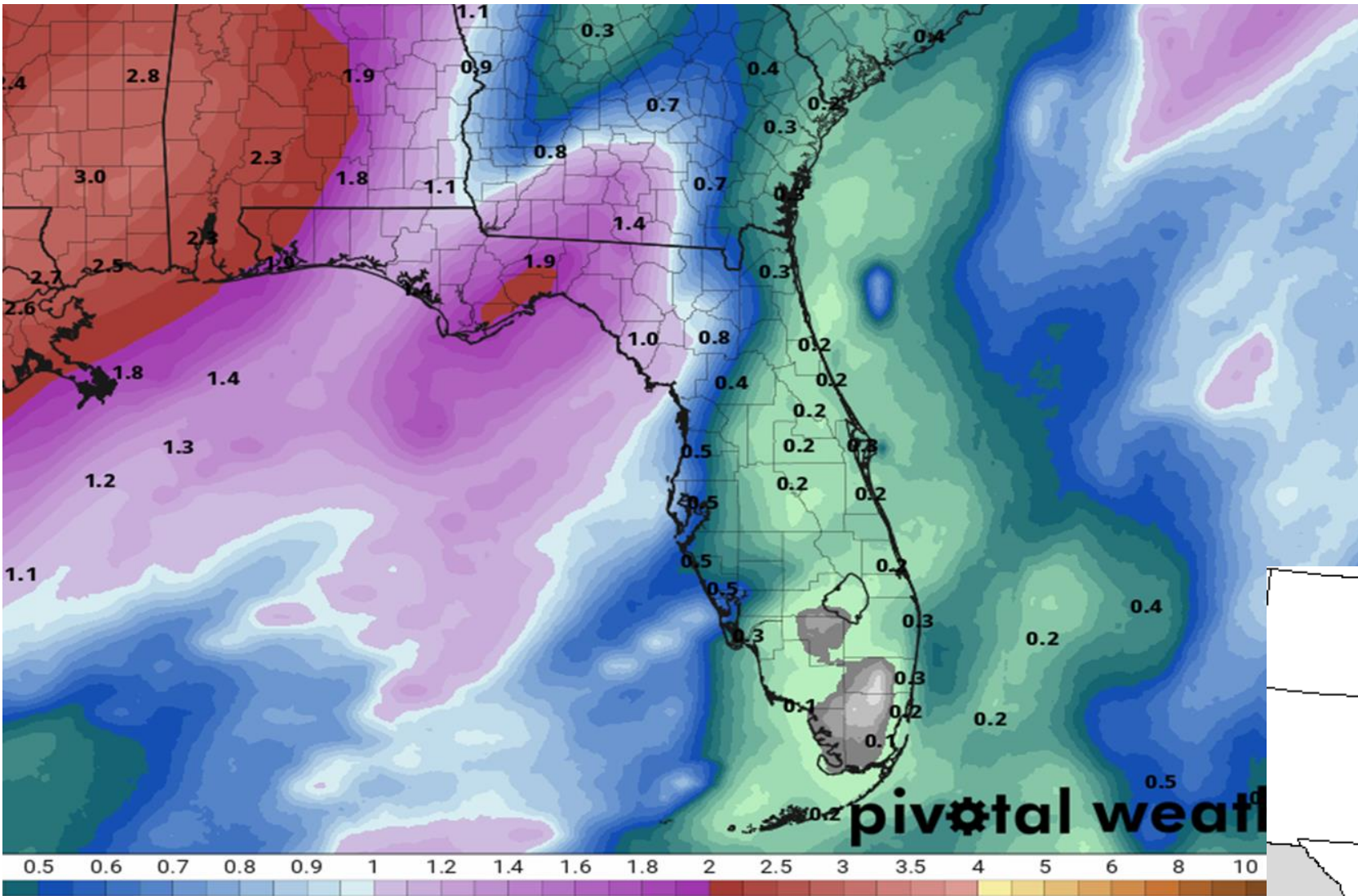


Understanding Severe Thunderstorm Risk Categories

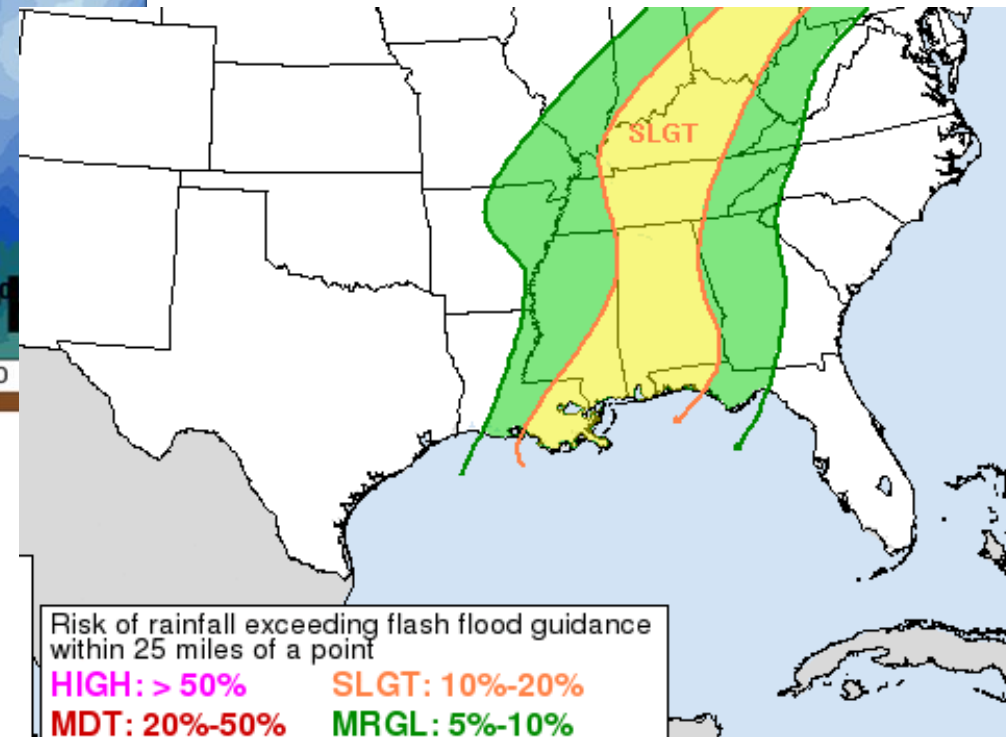
THUNDERSTORMS (no label)	1 - MARGINAL (MRGL)	2 - SLIGHT (SLGT)	3 - ENHANCED (ENH)	4 - MODERATE (MDT)	5 - HIGH (HIGH)
No severe* thunderstorms expected	Isolated severe thunderstorms possible	Scattered severe storms possible	Numerous severe storms possible	Widespread severe storms likely	Widespread severe storms expected
Lightning/flooding threats exist with <u>all</u> thunderstorms	Limited in duration and/or coverage and/or intensity	Short-lived and/or not widespread, isolated intense storms possible	More persistent and/or widespread, a few intense	Long-lived, widespread and intense	Long-lived, very widespread and particularly intense
					
<ul style="list-style-type: none"> • Winds to 40 mph • Small hail 	<ul style="list-style-type: none"> • Winds 40-60 mph • Hail up to 1" • Low tornado risk 	<ul style="list-style-type: none"> • One or two tornadoes • Reports of strong winds/wind damage • Hail ~1", isolated 2" 	<ul style="list-style-type: none"> • A few tornadoes • Several reports of wind damage • Damaging hail, 1 - 2" 	<ul style="list-style-type: none"> • Strong tornadoes • Widespread wind damage • Destructive hail, 2" + 	<ul style="list-style-type: none"> • Tornado outbreak • Derecho

* NWS defines a severe thunderstorm as measured wind gusts to at least 58 mph, and/or hail to at least one inch in diameter, and/or a tornado. All thunderstorm categories imply lightning and the potential for flooding. Categories are also tied to the probability of a severe weather event within 25 miles of your location.

Forecast Rainfall Totals for Thursday- Friday



Widespread rain totals of 1-2" are expected, but isolated areas could receive up to 3-4" in a short amount of time and could result in some flash flooding. Greatest flood threat will be over the western Panhandle.



Severe Weather Event

Thursday-Friday (11/1-2):

Overview: Scattered to numerous showers and thunderstorms are expected on Thursday and Thursday night as a strong cold front moves through the region. Severe weather threat increasing.

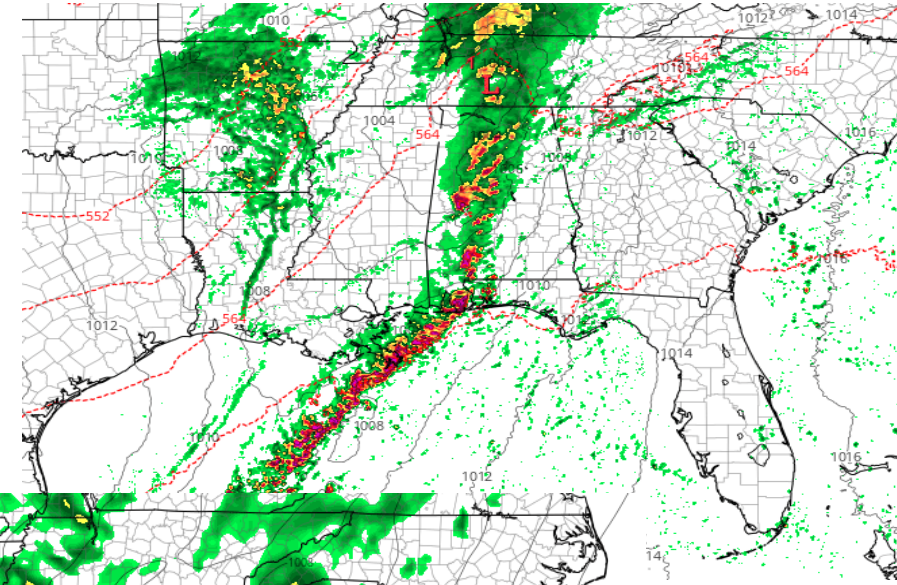
What: Squall line of damaging winds the primary threat, but cannot rule out isolated tornadoes. Heavy rain of 1-2" with isolated cases of 3-4" possible.

Where: Panhandle and western Big Bend for severe weather. Flood threat greatest west of US-231.

When: There may be 2 rounds of severe weather: in the afternoon and evening, then a second round from midnight through Friday morning. Rain will move out of the Big Bend by Friday afternoon. **Still too early to pinpoint exact timing!**

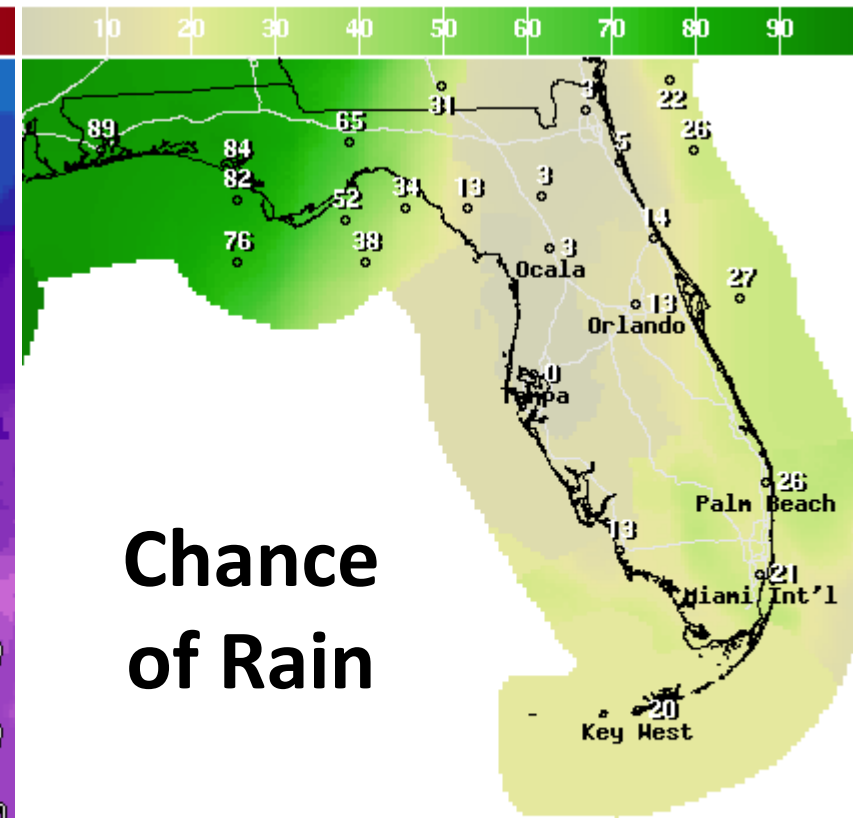
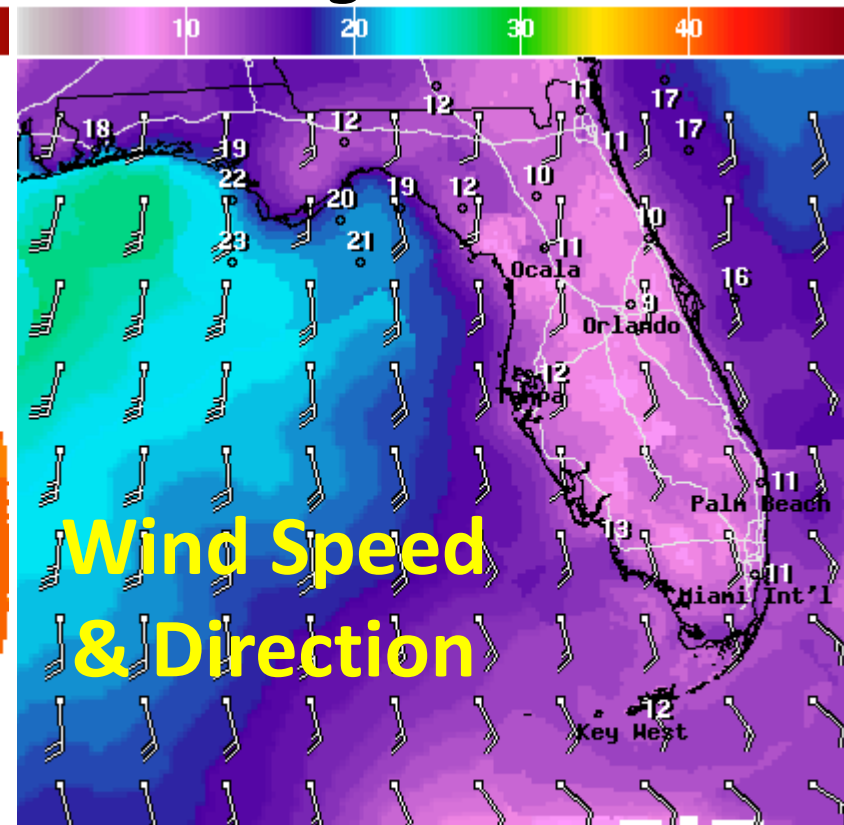
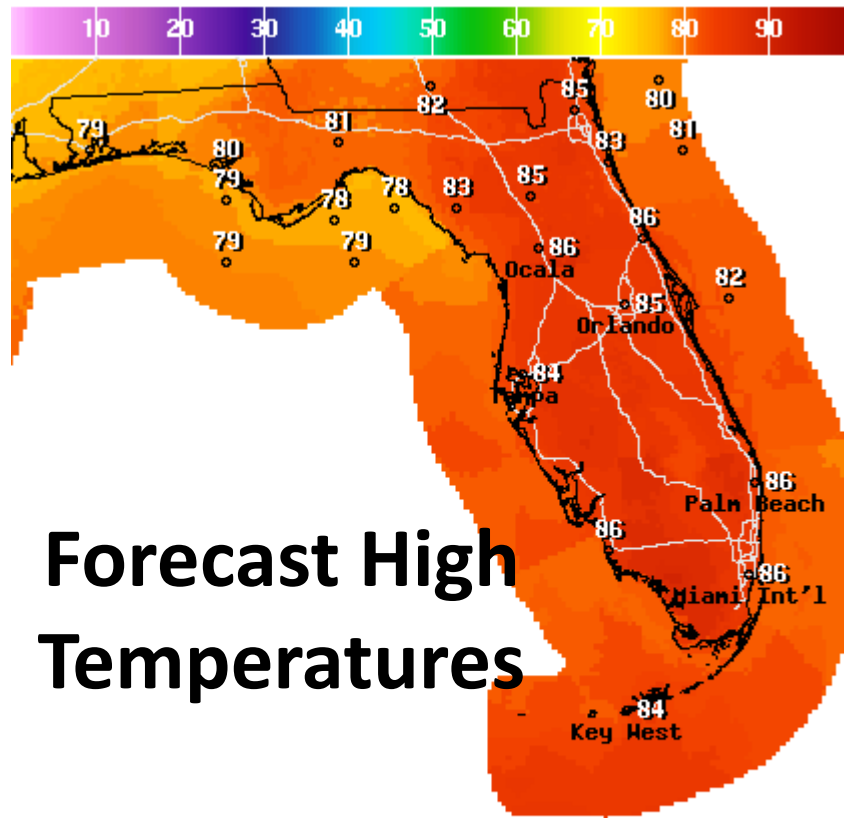
Potential Impacts: Wind gusts in excess of 50-60mph could result in moderate to severe tree damage and damage to carports, garages and fences. Power outages possible. Wind gusts of 40-50mph could uproot weak or leaning trees. Heavy rain could result in some flash flooding, especially in poor-drainage areas.

Future Radar Forecast – Midday Thursday



Thursday Evening

Thursday's Forecast



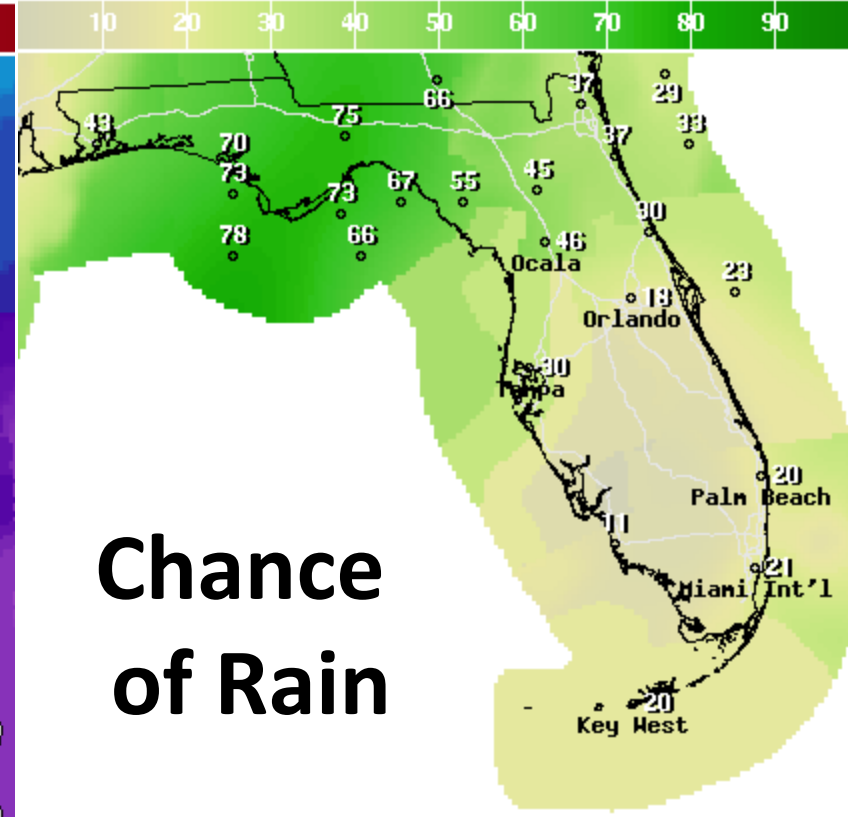
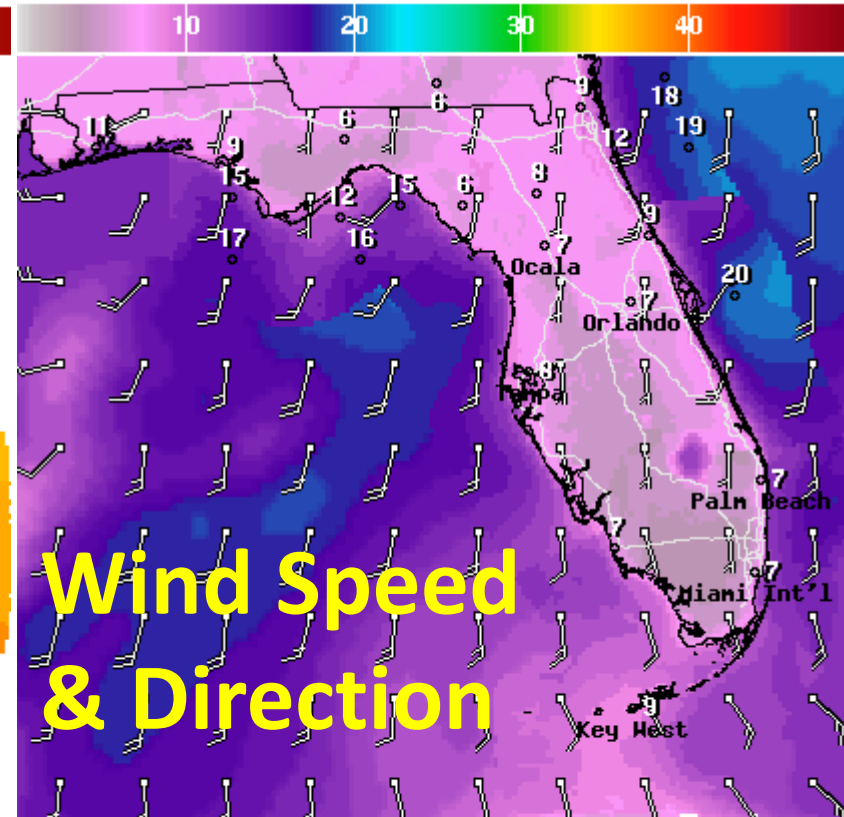
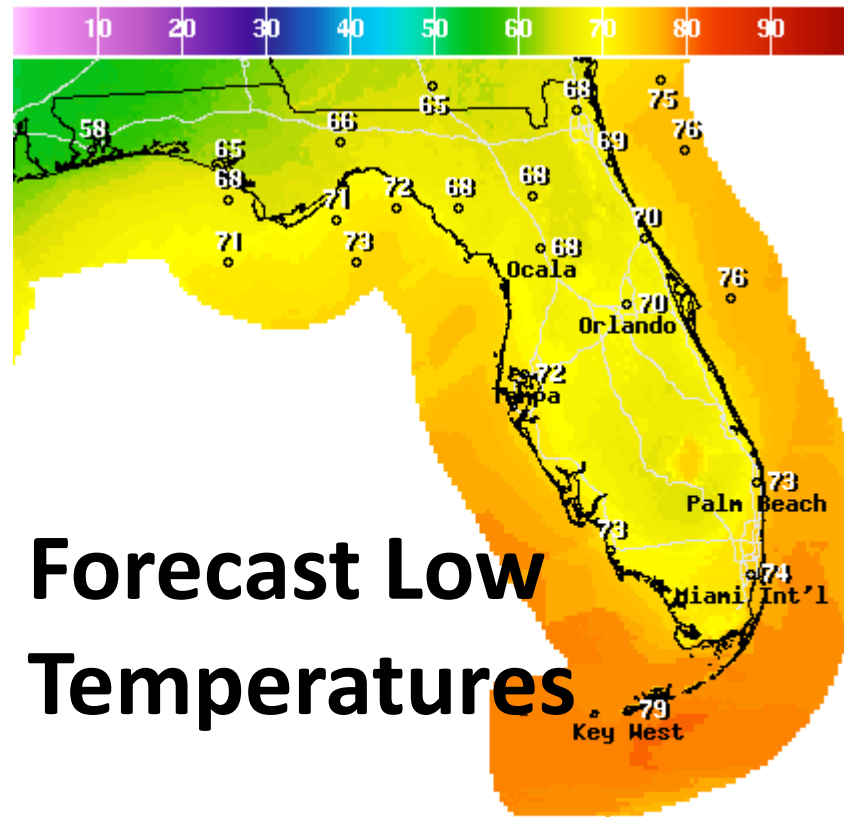
High Temperature(F) Ending Thu Nov 01 2018 8PM EDT
(Fri Nov 02 2018 00Z)
National Digital Forecast Database
12z issuance Graphic created-Oct 30 8:53AM EDT

WindSpd(Kts) & WindDir For Thu Nov 01 2018 2PM EDT
(Thu Nov 01 2018 18Z)
National Digital Forecast Database
12z issuance Graphic created-Oct 30 9:07AM EDT

12Hr Prob.Precip(%) Ending Thu Nov 01 2018 8PM EDT
(Fri Nov 02 2018 00Z)
National Digital Forecast Database
12z issuance Graphic created-Oct 30 8:44AM EDT

Strong cold front with an associated line of thunderstorms will move eastward across the Panhandle and Big Bend during the day before exiting east into the Peninsula on Friday. Severe weather and locally heavy rain possible. Winds will be out of the south at 10-20 mph with gusts of 20-30mph. Squall line of stronger storms could produce gusts of 50-60mph.

Thursday Night's Forecast



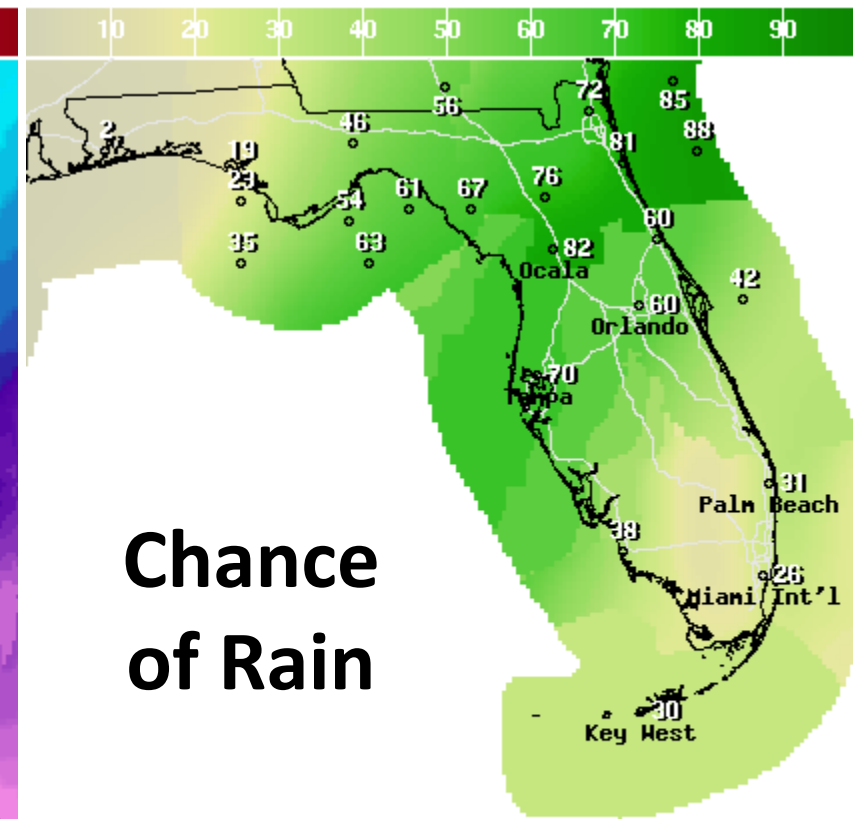
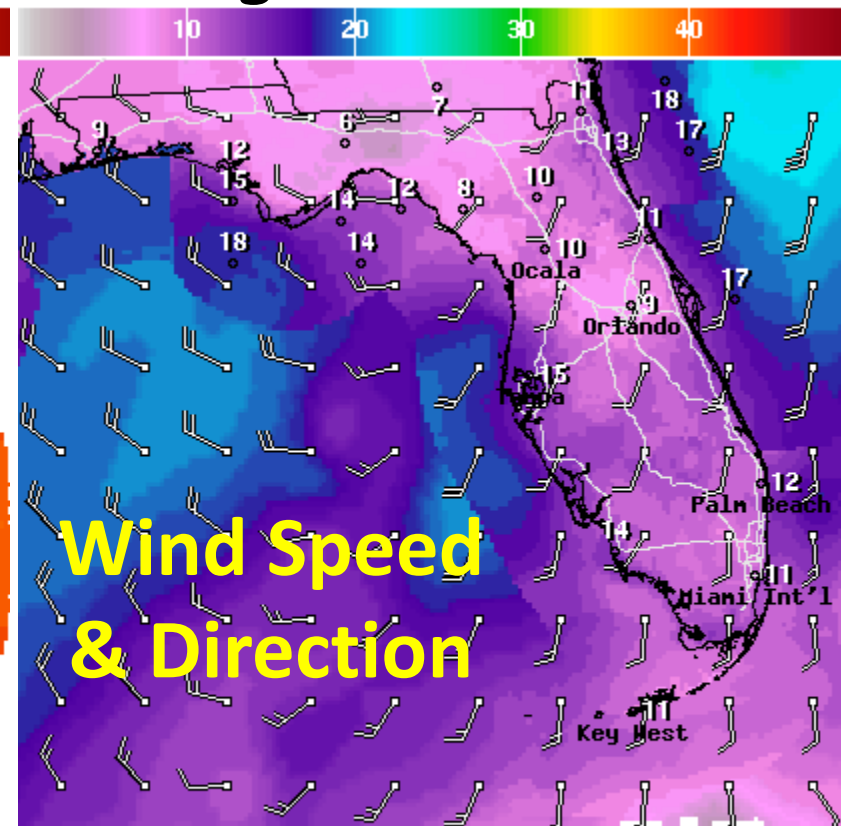
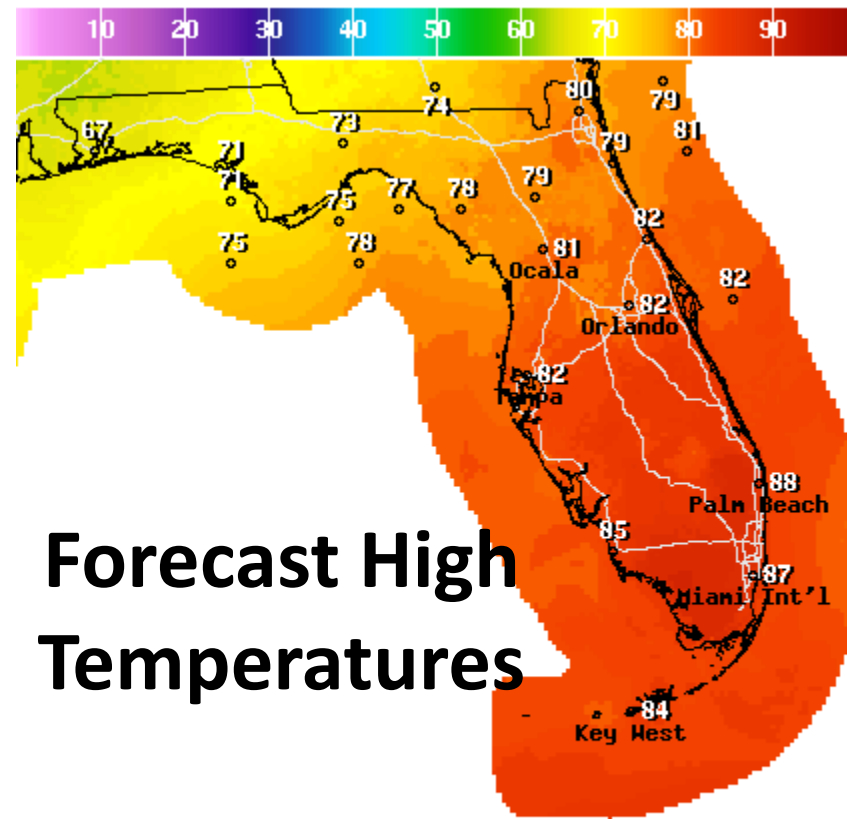
Low Temperature(F) Ending Fri Nov 02 2018 8AM EDT
(Fri Nov 02 2018 12Z)
National Digital Forecast Database
12z issuance Graphic created-Oct 30 8:54AM EDT

WindSpd(Kts) & WindDir For Fri Nov 02 2018 2AM EDT
(Fri Nov 02 2018 06Z)
National Digital Forecast Database
12z issuance Graphic created-Oct 30 9:07AM EDT

12Hr Prob.Precip(%) Ending Fri Nov 02 2018 8AM EDT
(Fri Nov 02 2018 12Z)
National Digital Forecast Database
12z issuance Graphic created-Oct 30 8:45AM EDT

Rain should exit east of the western Panhandle by 3am, with the strongest storms moving out of the eastern Panhandle and into the Big Bend around sunrise Friday. Cloud cover and rain will keep overnight lows in the upper while less cloud cover in the western Panhandle will allow lows to drop into the upper 50s to mid 60s. Winds will be out of the southwest at 5-15 mph with gusts of 15-25 mph.

Friday's Forecast



High Temperature(F) Ending Fri Nov 02 2018 8PM EDT
(Sat Nov 03 2018 00Z)
National Digital Forecast Database
12z issuance Graphic created-Oct 30 8:53AM EDT

WindSpd(Kts) & WindDir For Fri Nov 02 2018 2PM EDT
(Fri Nov 02 2018 18Z)
National Digital Forecast Database
12z issuance Graphic created-Oct 30 9:07AM EDT

12Hr Prob.Precip(%) Ending Fri Nov 02 2018 8PM EDT
(Sat Nov 03 2018 00Z)
National Digital Forecast Database
12z issuance Graphic created-Oct 30 8:45AM EDT

Rain should exit east of Tallahassee around noon. Skies will remain mostly cloudy until later in the day and a cool and dry airmass will move in on breezy northwest winds of 5-15 mph. This will keep afternoon temperatures cool (about 10 degrees cooler than Thursday) with highs only reaching the upper 60s to low 70s.

Summary

Hurricane Oscar:

- Oscar is located about 455 miles east-southeast of Bermuda or about 1,450 miles east of Jacksonville, FL.
- Oscar is moving to the north-northeast at 14 mph. Oscar will turn northeast and continue to accelerate today and tomorrow.
- Oscar has maximum sustained winds of 100 mph making it a Category 2 on the Saffir-Simpson wind scale.
- Dry air has started to be entrained into the system, wind shear is increasing, and water temperatures are getting colder. This is resulting in a weakening of Oscar and a transition to a post-tropical system is expected tomorrow evening as it moves into the North Atlantic.
- New tropical development is not expected over the next 5 days in the Atlantic, Caribbean, or Gulf of Mexico.

Florida Outlook:

- Oscar poses no direct threat to land, but ocean swells from the storm will reach the east coast of Florida starting late today increasing the rip current risk.
- Dry conditions and seasonable temperatures are expected to last until Halloween night statewide.
- Another strong cold front arrives Thursday and Friday bringing a line of thunderstorms.
- In the Panhandle, rainfall amounts will be 1-2" with localized totals of 3-4". Isolated cases of flash flooding will be possible.
- A **Slight Risk** of severe weather is forecast for Thursday afternoon and night from Pensacola to Tallahassee. The main threat will be damaging winds of 60 mph with a squall line, but an isolated tornado is also possible.
- Two rounds of thunderstorms will be possible, one ahead of the cold front and a separate threat 6-12 hours after the first associated with the actual cold front.
- The exact timing of the thunderstorms is uncertain at the moment, but more details will become available over the next 36 hours.

Another briefing packet will be issued tomorrow covering the severe weather threat. Some uncertainty remains regarding specific timing and intensity, but we will continue to monitor the situation and keep you updated over the next few days as the threat evolves. For the latest severe weather outlook please visit the [Storm Prediction Center](#) website.

This is the last tropics update on Hurricane Oscar. For the latest information on the tropics, please visit the National Hurricane Center website at www.hurricanes.gov.



TROPICAL UPDATE

Created by:

Michael Spagnolo, Deputy State Meteorologist

Michael.Spagnolo@em.myflorida.com

State Meteorological Support Unit

Florida Division of Emergency Management

Users wishing to subscribe (approval pending) to this distribution list, register at https://public.govdelivery.com/accounts/FLDEM/subscriber/new?topic_id=SERT_Met_Tropics.

Other reports available for subscription are available at <https://public.govdelivery.com/accounts/FLDEM/subscriber/new?preferences=true>