



TROPICAL UPDATE

11 AM EDT

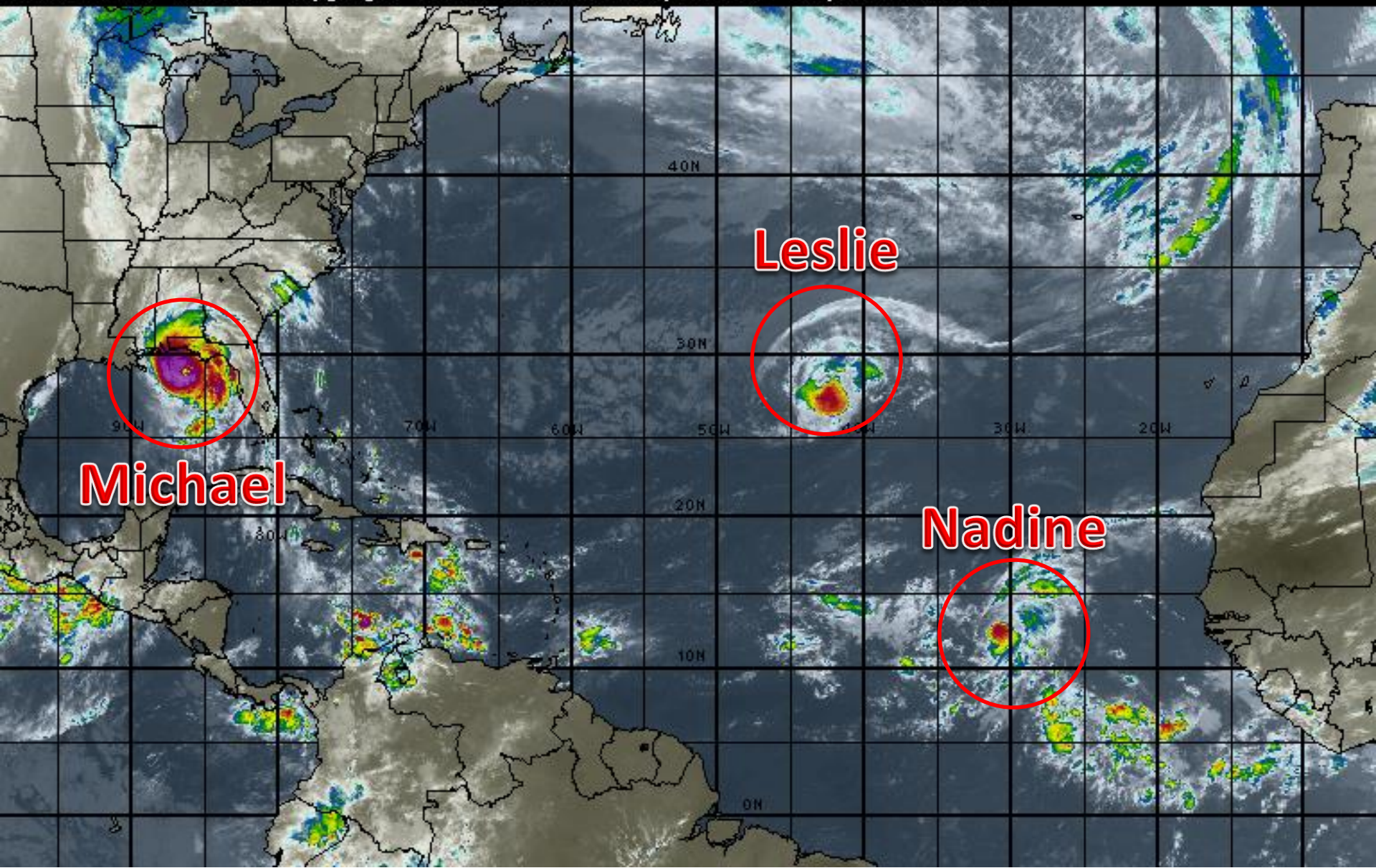
Wednesday, October 10, 2018

**Hurricane Michael, Hurricane Leslie &
Tropical Storm Nadine, Caribbean Low (40%)**

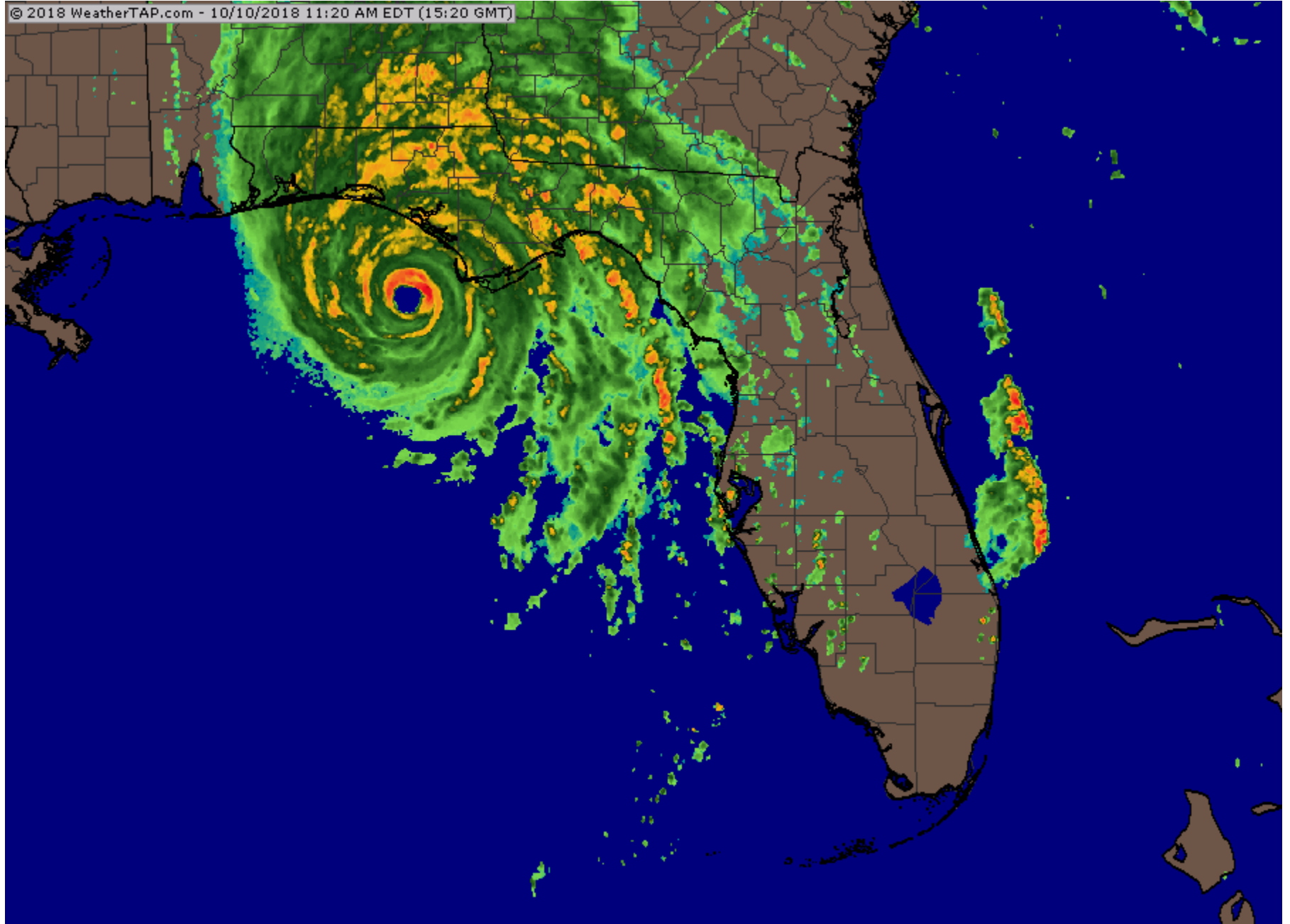
This update is intended for government and emergency response officials, and is provided for informational and situational awareness purposes only. Forecast conditions are subject to change based on a variety of environmental factors. For additional information, or for any life safety concerns with an active weather event please contact your County Emergency Management or Public Safety Office, local National Weather Service forecast office or visit the National Hurricane Center website at www.nhc.noaa.gov.

Atlantic Basin Satellite Image

12:00 10-OCT-2018 GMT Copyright © 1998-2018 WSI Corporation <http://www.wsi.com>



State Radar as of 11:20 AM EDT Wed.



HURRICANE MICHAEL

ALERTS

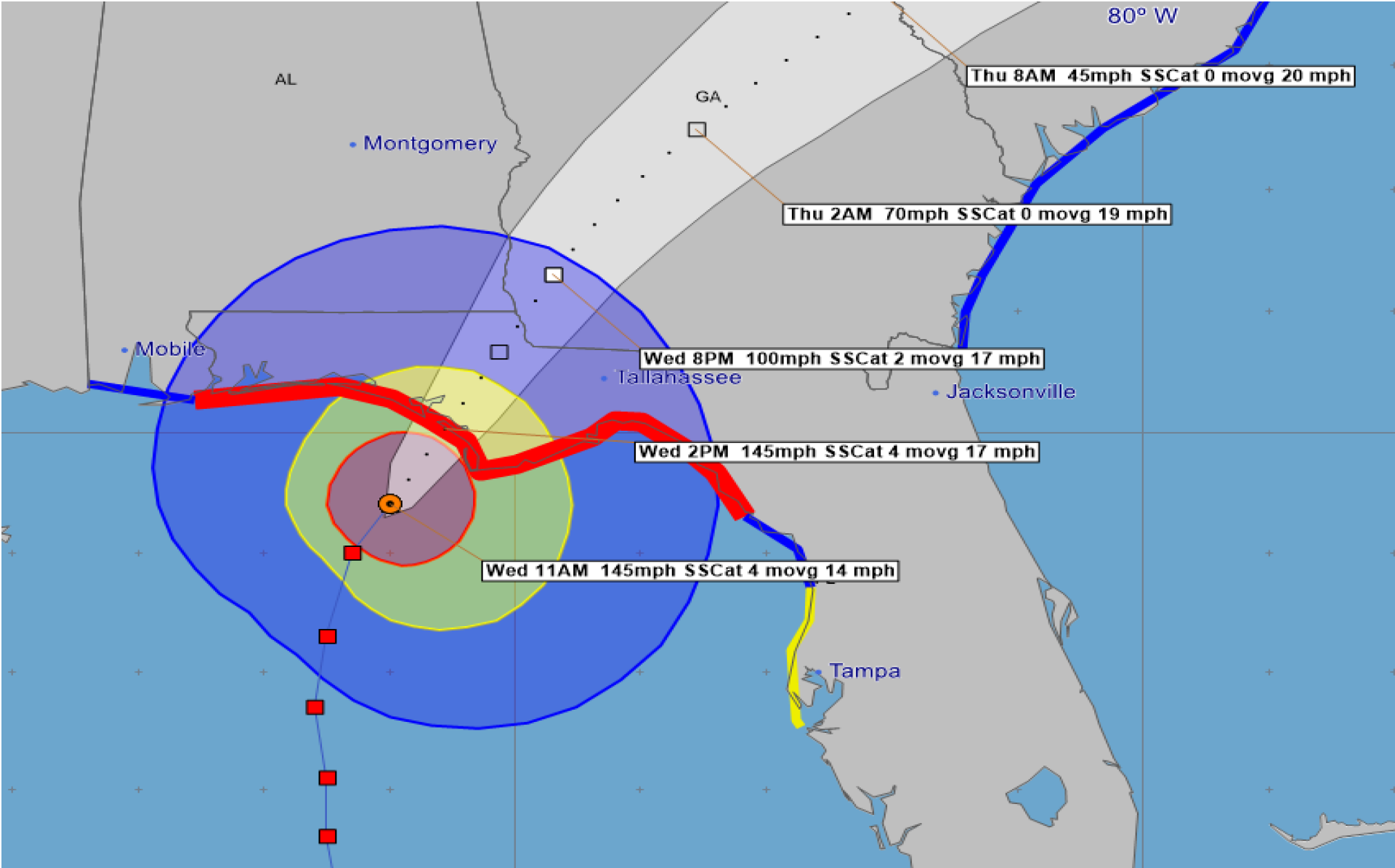
TROPICAL STORM
WATCH

TROPICAL STORM
WARNING

HURRICANE
WATCH

HURRICANE
WARNING





Thu 8AM 45mph SSCat 0 movg 20 mph

Thu 2AM 70mph SSCat 0 movg 19 mph

Wed 8PM 100mph SSCat 2 movg 17 mph

Wed 2PM 145mph SSCat 4 movg 17 mph

Wed 11AM 145mph SSCat 4 movg 14 mph

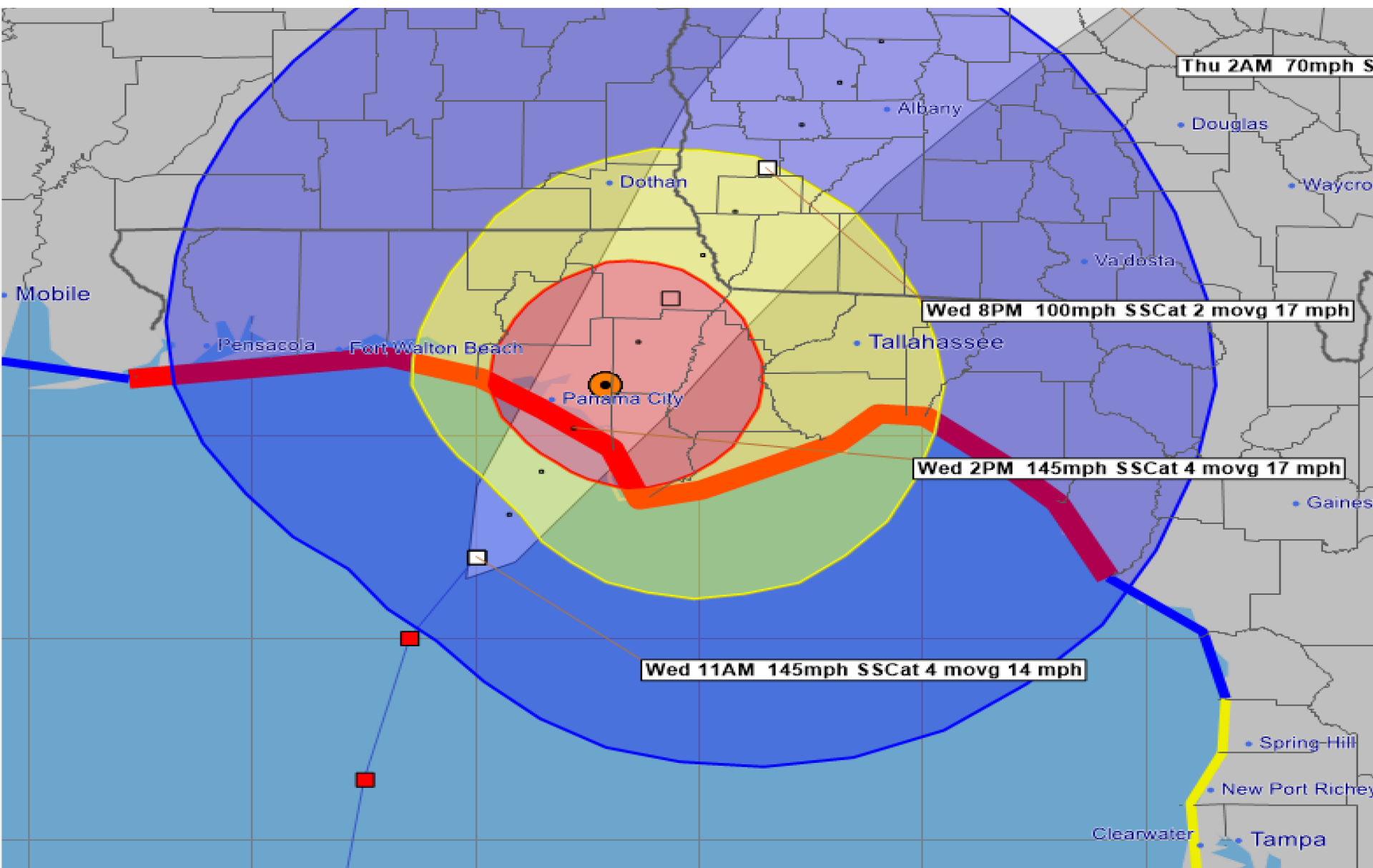
Hurricane Michael - Wednesday, October 10, 2018 11 AM EDT Advisory #16

Center Location: 29.4 N 86 W Maximum Sustained Winds: 145 mph (Cat 4) Movement: 14 mph NNE

forecast positions Potential Track Area: day 1-3 day 4-5 Surface Wind Field: at current

Watches: hurricane tropical storm Warnings: hurricane tropical storm

Sustained Wind Speeds: tropical storm >= 34kt/39mph strong tropical storm >= 50kt/58mph hurricane



Hurricane Michael - Wednesday, October 10, 2018 3 PM EDT (Fcst Hr 4) Advisory #16

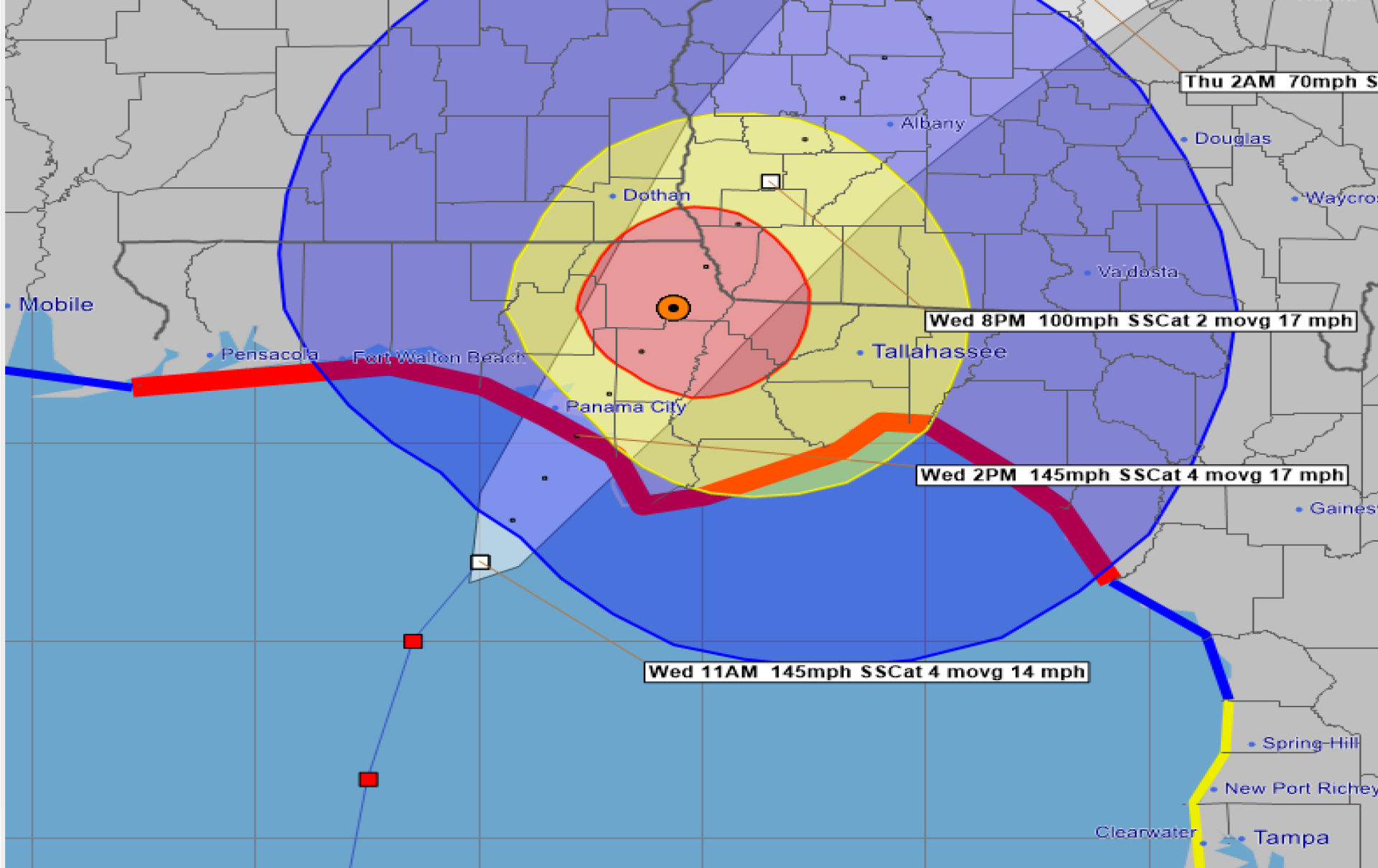
Center Location: 30.2 N 85.4 W Maximum Sustained Winds: 145 mph (Cat 4) Movement: 17 mph NNE

forecast positions Potential Track Area: day 1-3 day 4-5 Surface Wind Field: at current location

Watches: hurricane tropical storm

Warnings: hurricane tropical storm

Sustained Wind Speeds: tropical storm $\geq 34\text{kt}/39\text{mph}$ strong tropical storm $\geq 50\text{kt}/58\text{mph}$ hurricane $\geq 64\text{kt}/74\text{mph}$



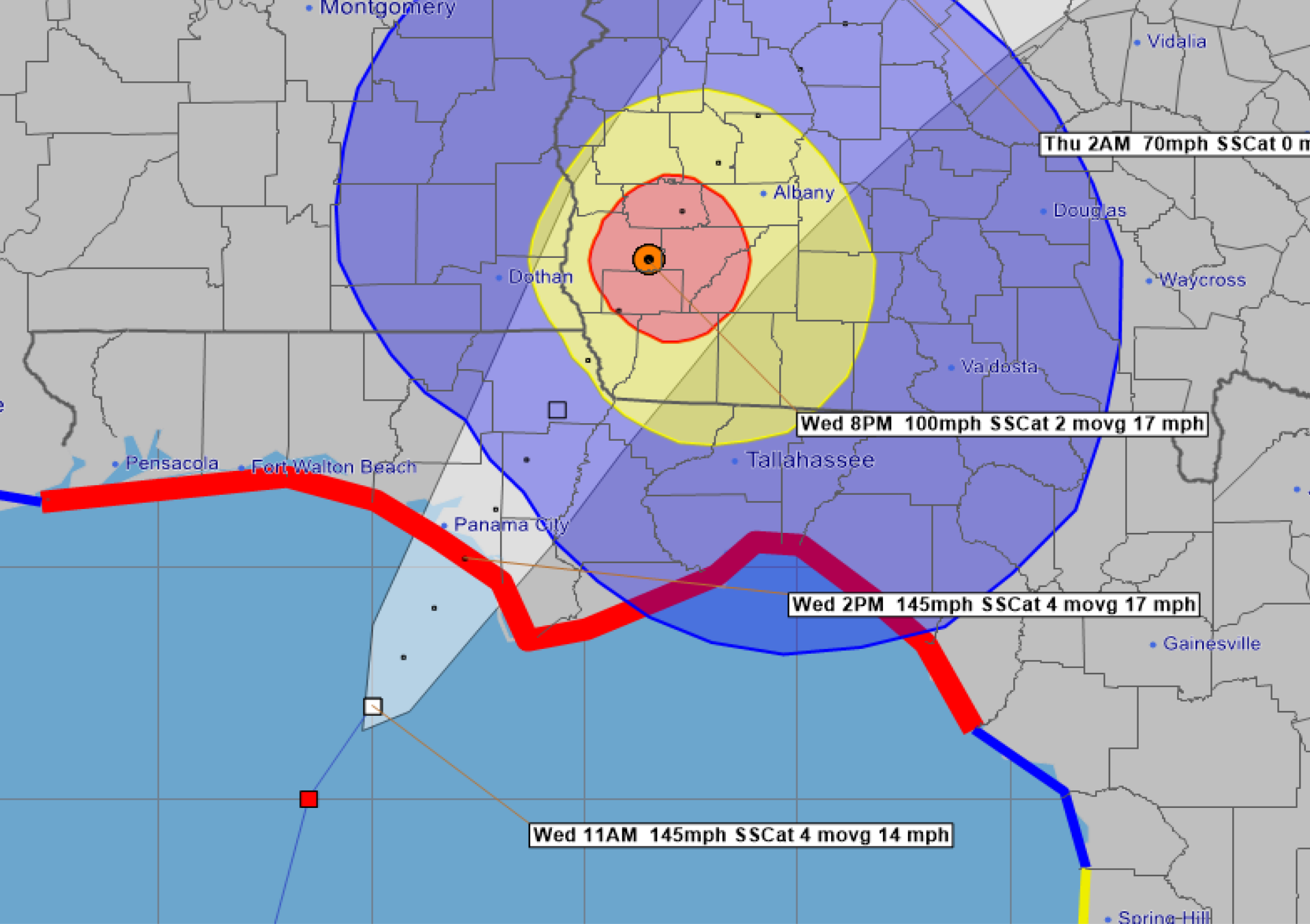
Hurricane Michael - Wednesday, October 10, 2018 5 PM EDT (Fcst Hr 6) Advisory #16

● Center Location: 30.7 N 85.1 W Maximum Sustained Winds: 125 mph (Cat 3) Movement: 17 mph NNE

□ forecast positions Potential Track Area: ○ day 1-3 ○ day 4-5 Surface Wind Field: ● at current location

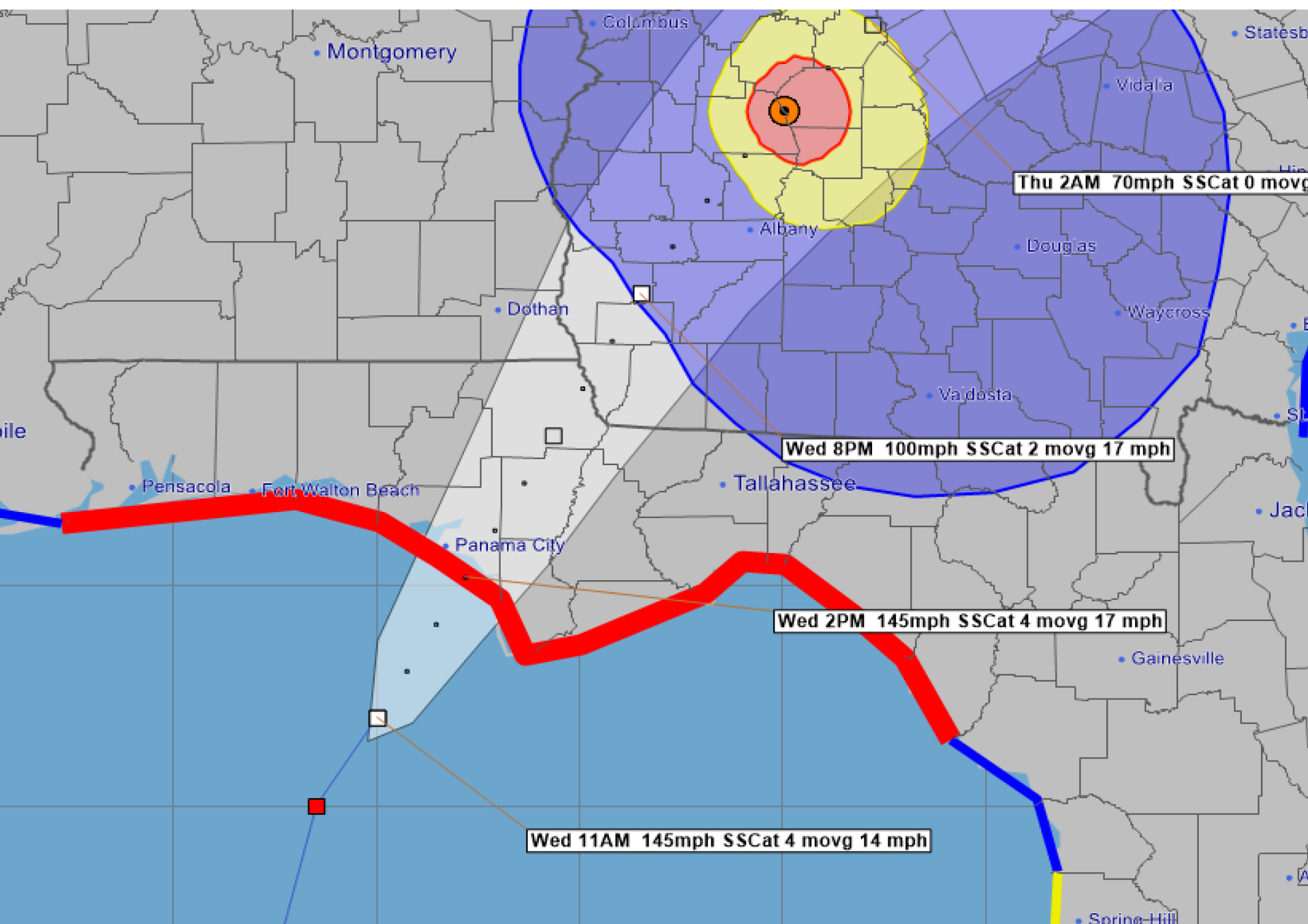
Watches: ■ hurricane ■ tropical storm Warnings: ■ hurricane ■ tropical storm

Sustained Wind Speeds: ■ tropical storm >= 34kt/39mph ■ strong tropical storm >= 50kt/58mph ■ hurricane >= 64kt/74mph



Hurricane Michael - Wednesday, October 10, 2018 8 PM EDT (Fcst Hr 9) Advisory #16

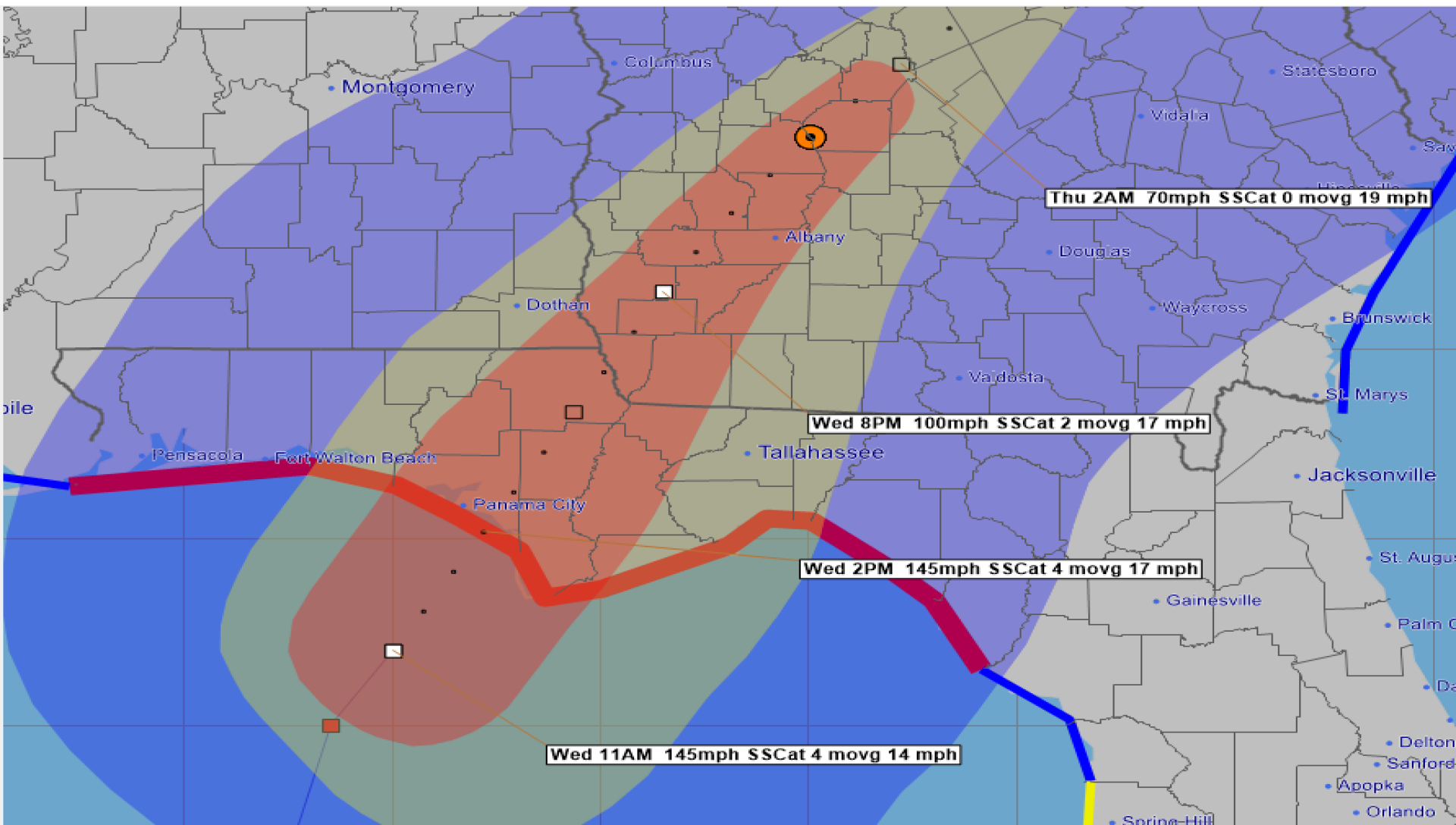
Center Location: 31.3 N 84.7 W Maximum Sustained Winds: 100 mph (Cat 2) Movement: 17 mph NNE



Hurricane Michael - Thursday, October 11, 2018 12 AM EDT (Fcst Hr 13) Advisory #16

Center Location: 32.1 N 84 W Maximum Sustained Winds: 80 mph (Cat 1) Movement: 18 mph NE

Forecast Cumulative Wind Swath



Hurricane Michael - Thursday, October 11, 2018 12 AM EDT (Fcst Hr 13) Advisory #16

Center Location: 32.1 N 84 W Maximum Sustained Winds: 80 mph (Cat 1) Movement: 18 mph NE

forecast positions Surface Wind Field: along 3-day forecast track

Watches: hurricane tropical storm

Warnings: hurricane tropical storm

Sustained Wind Speeds: tropical storm >= 34kt/39mph strong tropical storm >= 50kt/58mph hurricane >= 64kt/74mph



Potential Peak Wind Gusts during Michael

National Weather Service, Tallahassee, FL

Peak Wind Gust Speed

50 mph to 60 mph

60 mph to 73 mph

74 mph to 85 mph

85 mph to 95 mph

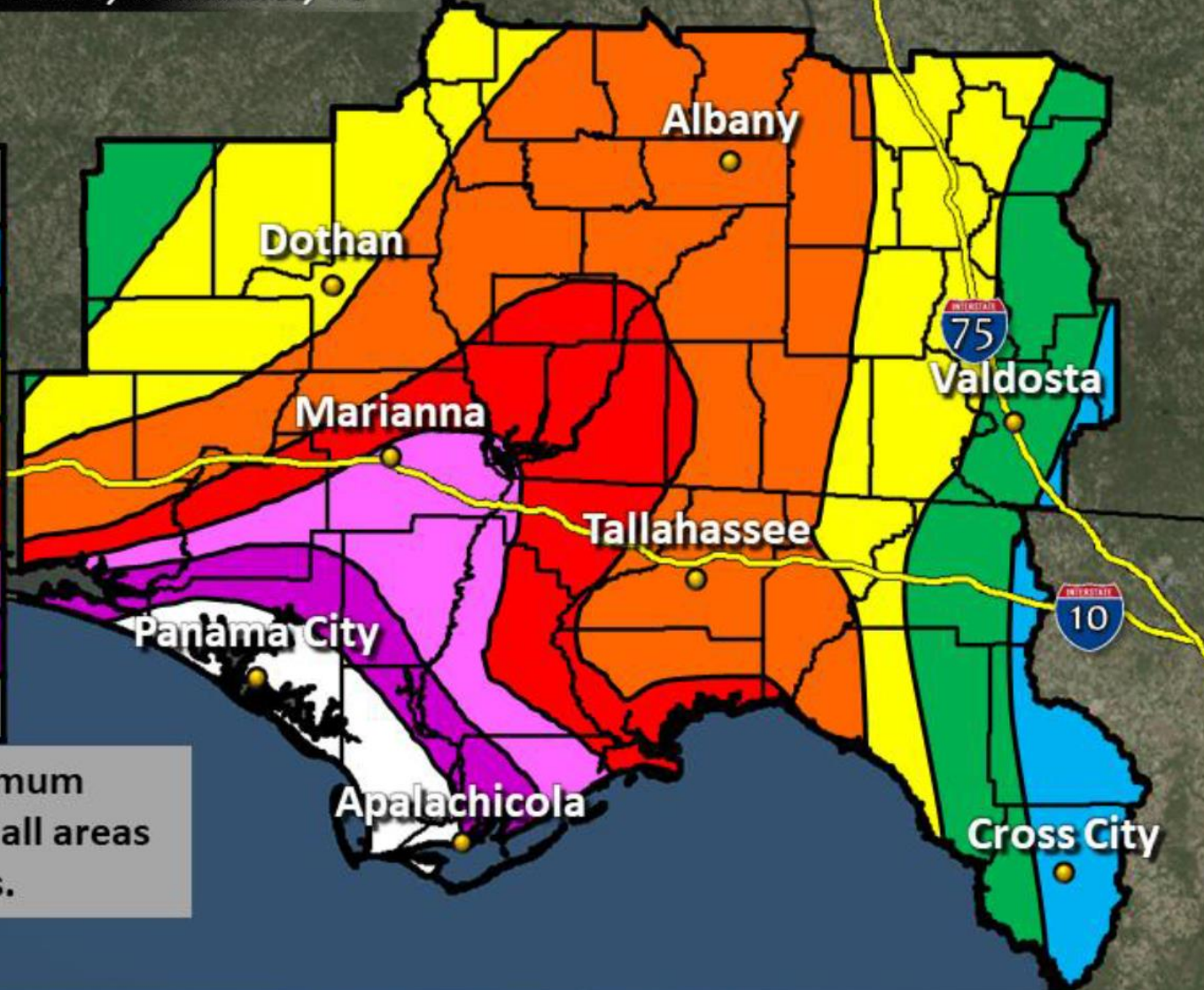
95 mph to 110 mph

111 mph to 129 mph

130 mph to 155 mph

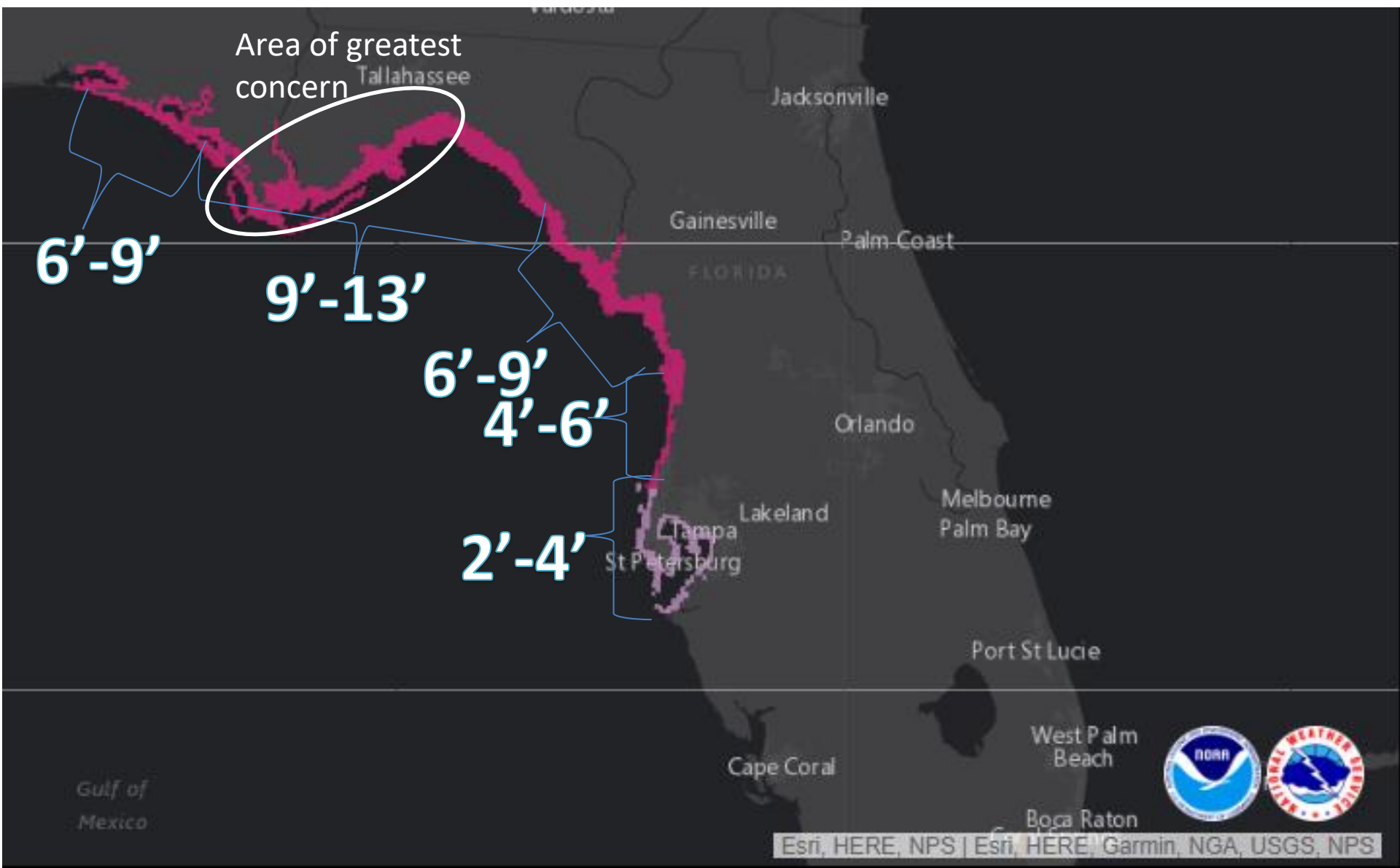
>156 mph

Note: These are the maximum wind gusts expected. Not all areas will see these peak values.



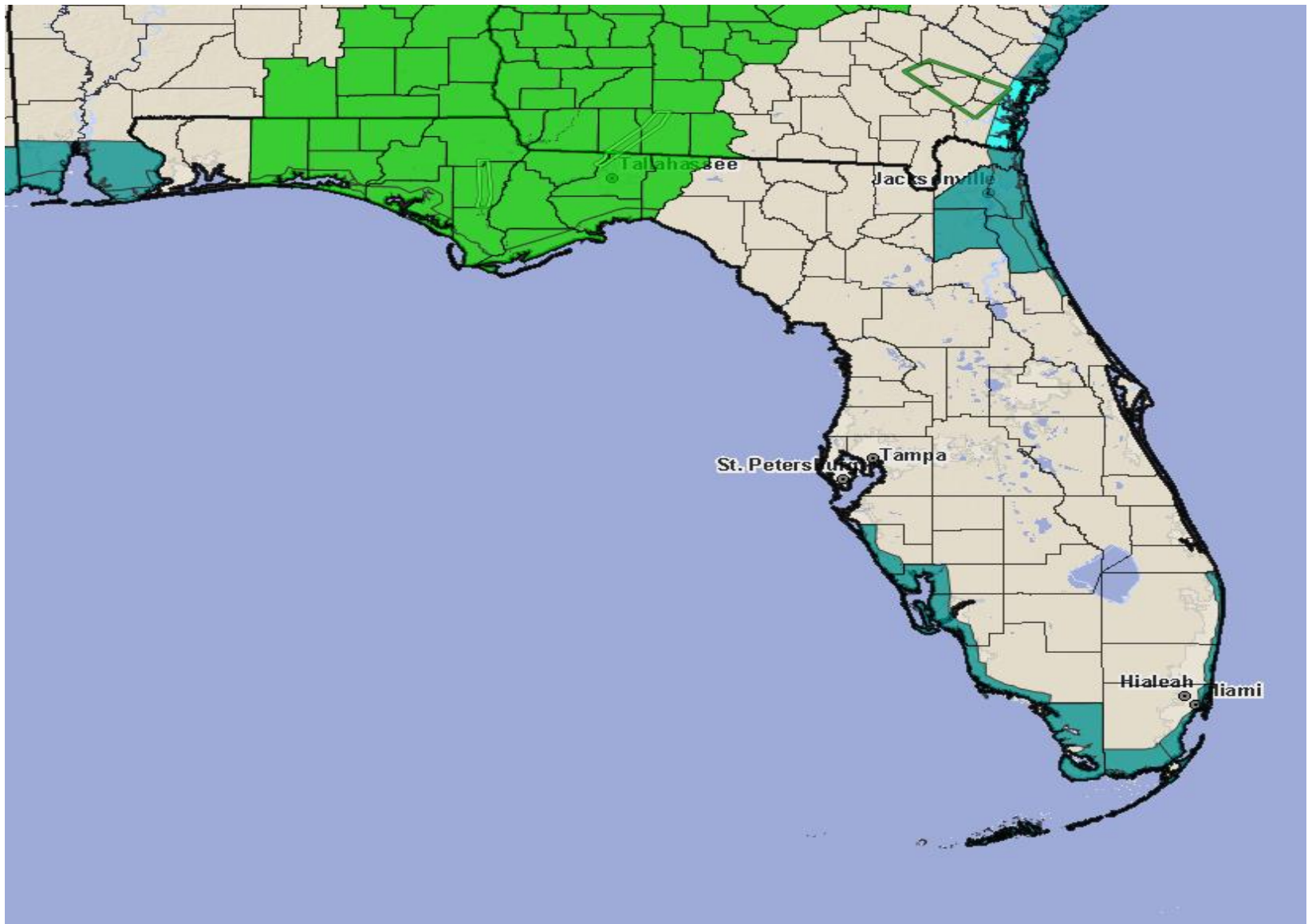
@NWS Tallahassee

10/10/2018



- Storm Surge Warning
- Storm Surge Watch

Flash Flood Watch in effect (light green)



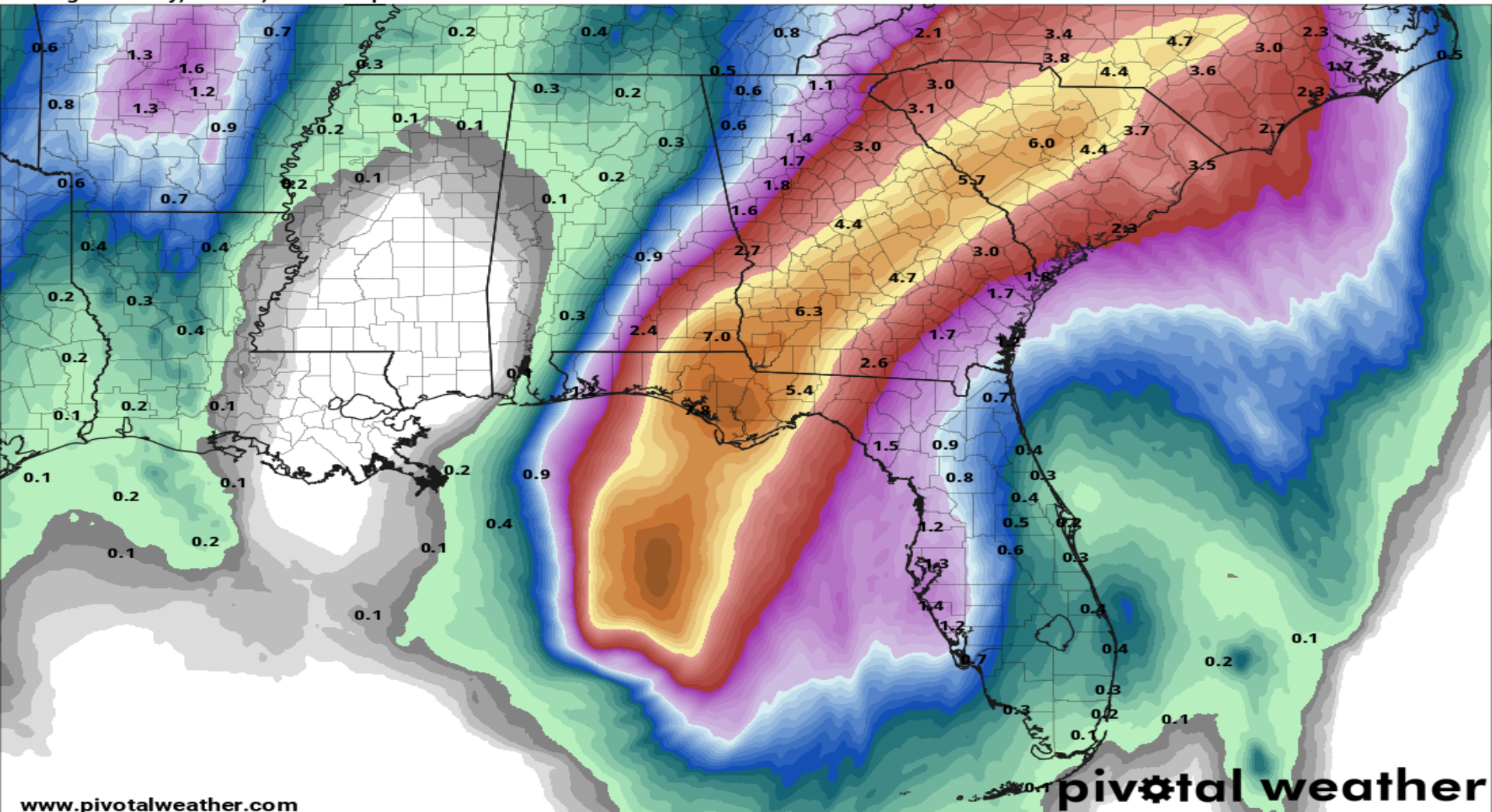
Forecast Cumulative Rain Totals – Next 48 Hours

Rain bands will begin impacting parts of the Panhandle, Big Bend, and West Coast today. Rain totals will be maximized east of where Michael tracks. A Flash Flood Watch is in effect for portions of the Big Bend and eastern Panhandle where 4-8" of rain is expected with isolated totals of 10-12" possible.

48-Hour Precipitation (in)

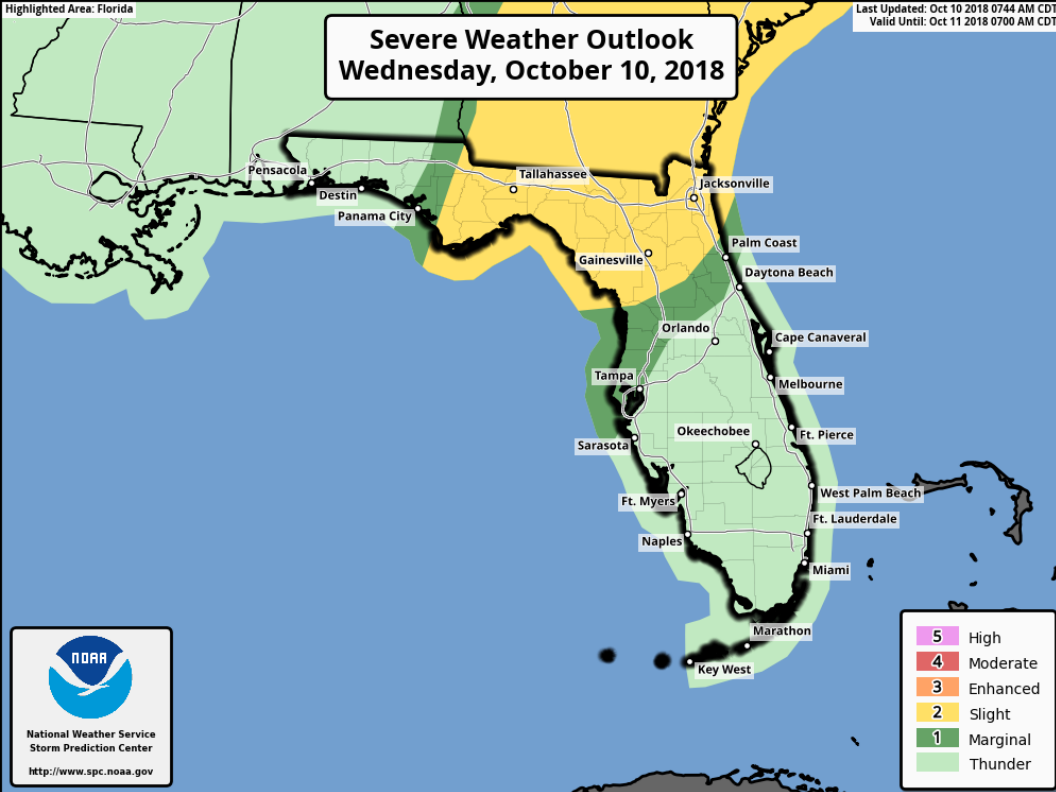
Ending Thursday, Oct. 11, 2018 at 8 p.m. EDT

Init: Wed 2018-10-10 00z WPC

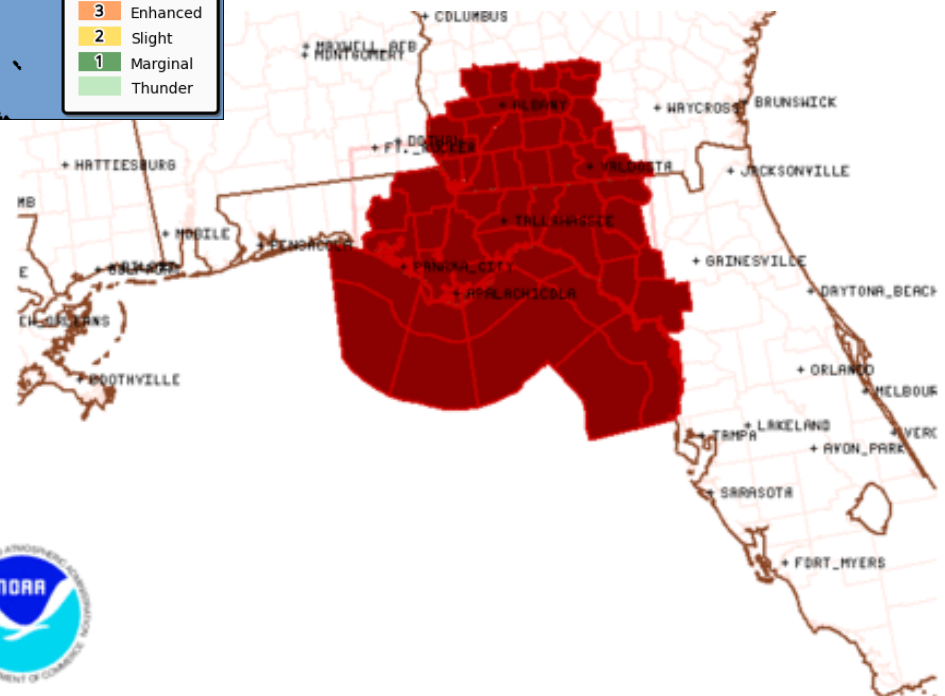


Severe Weather Outlook Wednesday, October 10, 2018

Last Updated: Oct 10 2018 0744 AM CDT
Valid Until: Oct 11 2018 0700 AM CDT

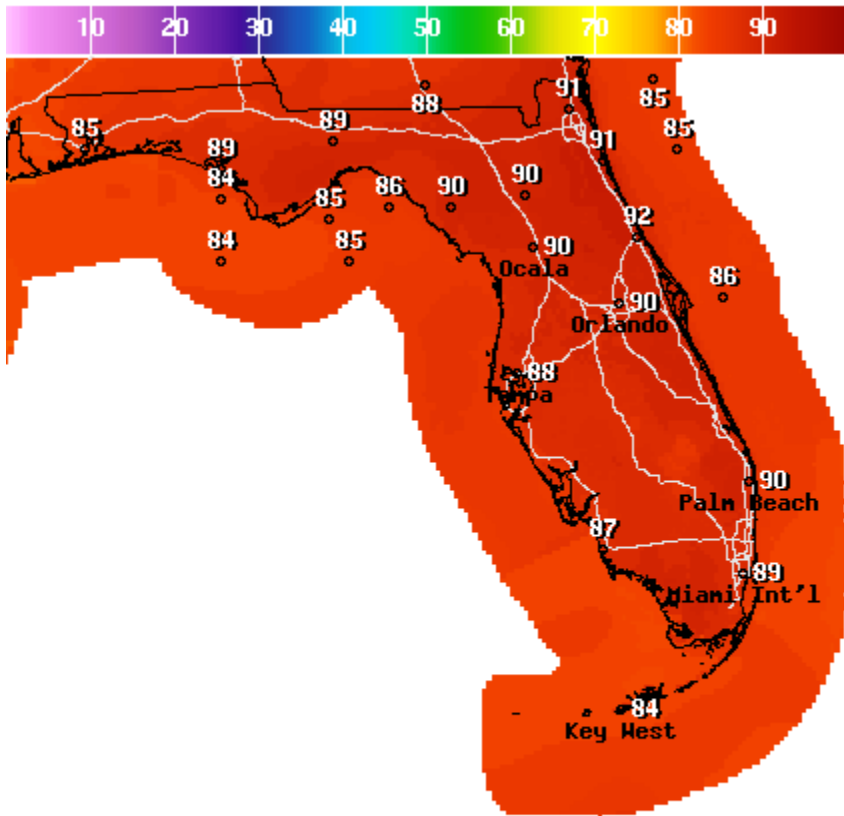


Tornado Threat

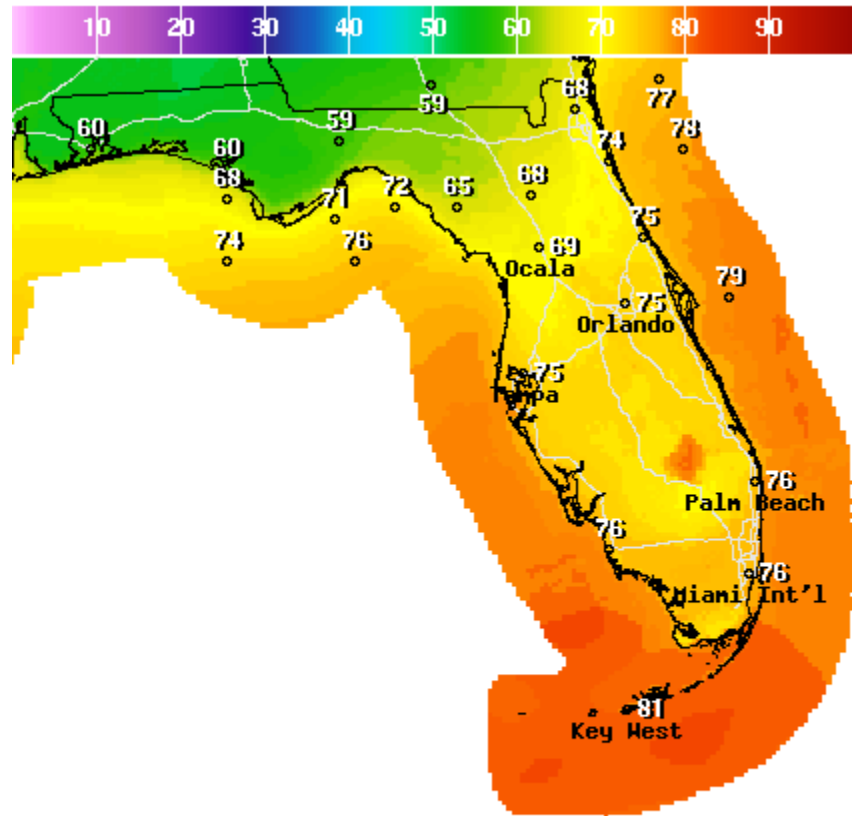


Tornado Watch # 406 - Valid from 545 AM until 500 PM EDT

Post-Storm High/Low Temperature Forecast - Thursday



Graphic created-Oct 10 10:27AM EDT



Graphic created-Oct 10 10:27AM EDT

Summary

Hurricane Michael:

- At 11:30am EDT Wednesday, Hurricane Michael was located about 50 miles south-southwest of Panama City, FL, and moving north-northeast at 14 mph.
- Maximum sustained winds have increased to 150 mph, a strong Category 4 on the Saffir-Simpson Hurricane Wind Scale.
- Tropical storm force winds extend up to 175 miles from the center and hurricane force winds extending up to 45 miles from the center.
- Michael will remain a major hurricane while moving through the Panhandle, and is not forecast to weaken to a tropical storm until it is over middle Georgia Thursday morning.

Hurricane Leslie:

- Leslie is a low-end Category 1 hurricane with maximum sustained winds of 75 mph, moving south-southeast at 7 mph.
- Leslie could approach Category 2 intensity as it turns eastward through Friday.

Tropical Storm Nadine:

- Tropical Storm Nadine is located in the eastern Atlantic Ocean with maximum sustained winds near 65 mph.
- Some additional strengthening is possible over the 24-36 hours while moving northwest, but is forecast to dissipate this weekend.

Florida Outlook:

- An increase in water levels from Michael are already present and wave heights and storm surge will continue to increase through tonight.
- Tropical storm conditions are arriving in the Panhandle and will spread inland throughout the day. Hurricane conditions should arrive in the Panhandle within a next few hours.
- **Tropical Storm Wind Watches** are in effect for 5 counties along the Florida West Coast, with a **Tropical Storm Warning** in effect for 10 counties in the eastern Big Bend, Suwannee Valley and Nature Coast.
- **Hurricane Warnings** are in effect for 18 Panhandle and Big Bend counties, including coastal portions of Taylor and Dixie.
- Storm surge will be one of the greatest impacts from this storm and may affect a large portion of the Florida Gulf Coast. **Storm Surge Warnings** have been issued between the Walton/Okaloosa border eastward to the Pasco/Pinellas County line for possible surge inundation of 6-9' for the eastern Panhandle coast and Nature Coast, and 9-14' for Apalachee Bay and the eastern Panhandle east of Panama City. Storm Surge Watches remain in effect for the Tampa Bay region for possible surge values of 2-4'.
- Widespread rainfall totals of 4-8" with locally higher amounts of 8-10+" can be expected across the Panhandle and Big Bend, with most of it occurring today.
- A Tornado Watch is in effect for the eastern Panhandle and Florida Big Bend until 5pm EDT.

Another briefing packet will be issued this evening. For the latest information on the tropics, please visit the National Hurricane Center website at www.hurricanes.gov.



TROPICAL UPDATE

Created by:

Amy Godsey, Chief State Meteorologist

Amy.Godsey@em.myflorida.com

State Meteorological Support Unit
Florida Division of Emergency
Management

Users wishing to subscribe (approval pending) to this distribution list, register at https://public.govdelivery.com/accounts/FLDEM/subscriber/new?topic_id=SERT_Met_Tropics.

Other reports available for subscription are available at

<https://public.govdelivery.com/accounts/FLDEM/subscriber/new?preferences=true>