



TROPICAL UPDATE

10 AM EDT

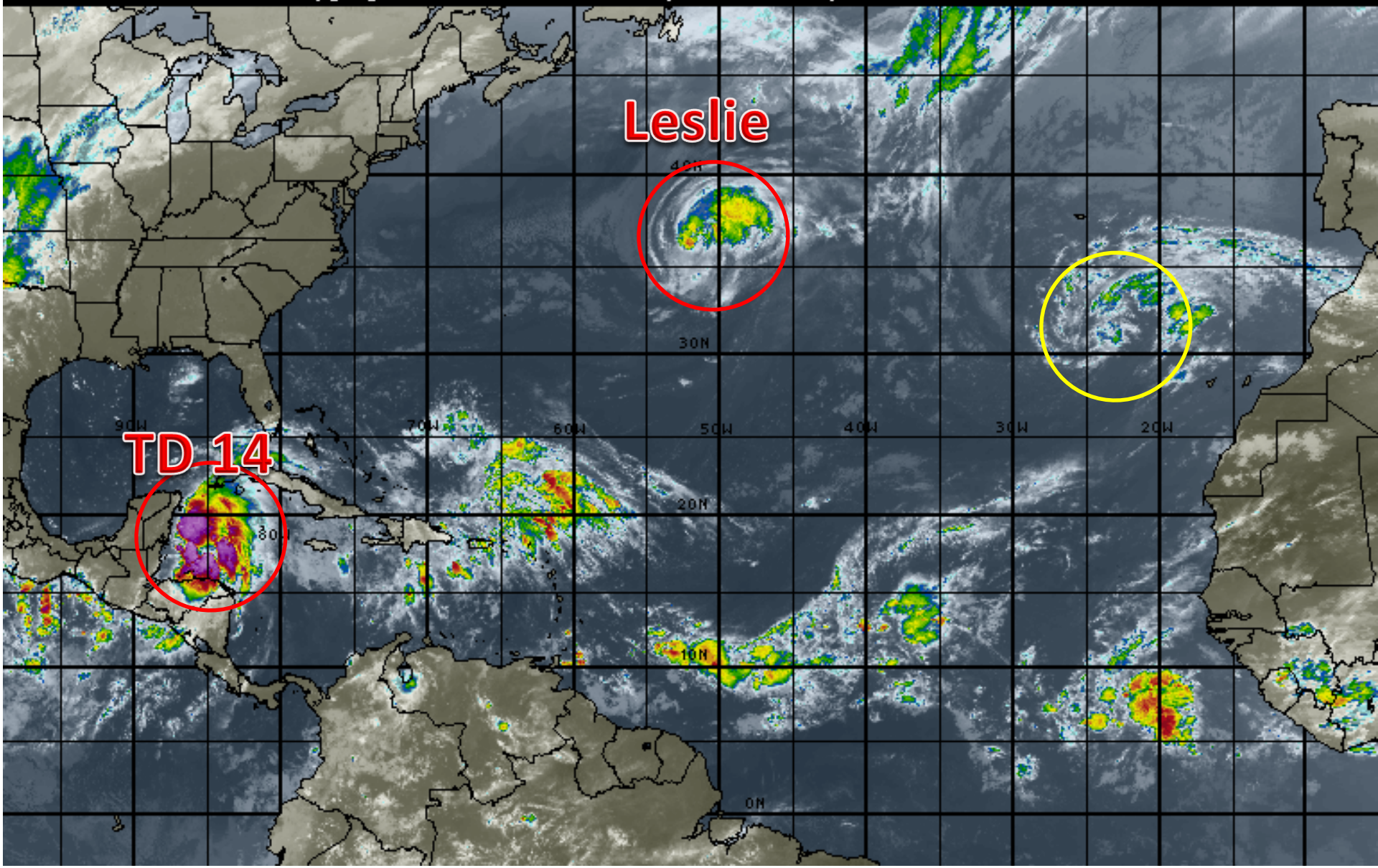
Sunday, October 7, 2018

**Tropical Depression 14, Tropical Storm Leslie,
& NE Atlantic Low (30%)**

This update is intended for government and emergency response officials, and is provided for informational and situational awareness purposes only. Forecast conditions are subject to change based on a variety of environmental factors. For additional information, or for any life safety concerns with an active weather event please contact your County Emergency Management or Public Safety Office, local National Weather Service forecast office or visit the National Hurricane Center website at www.nhc.noaa.gov.

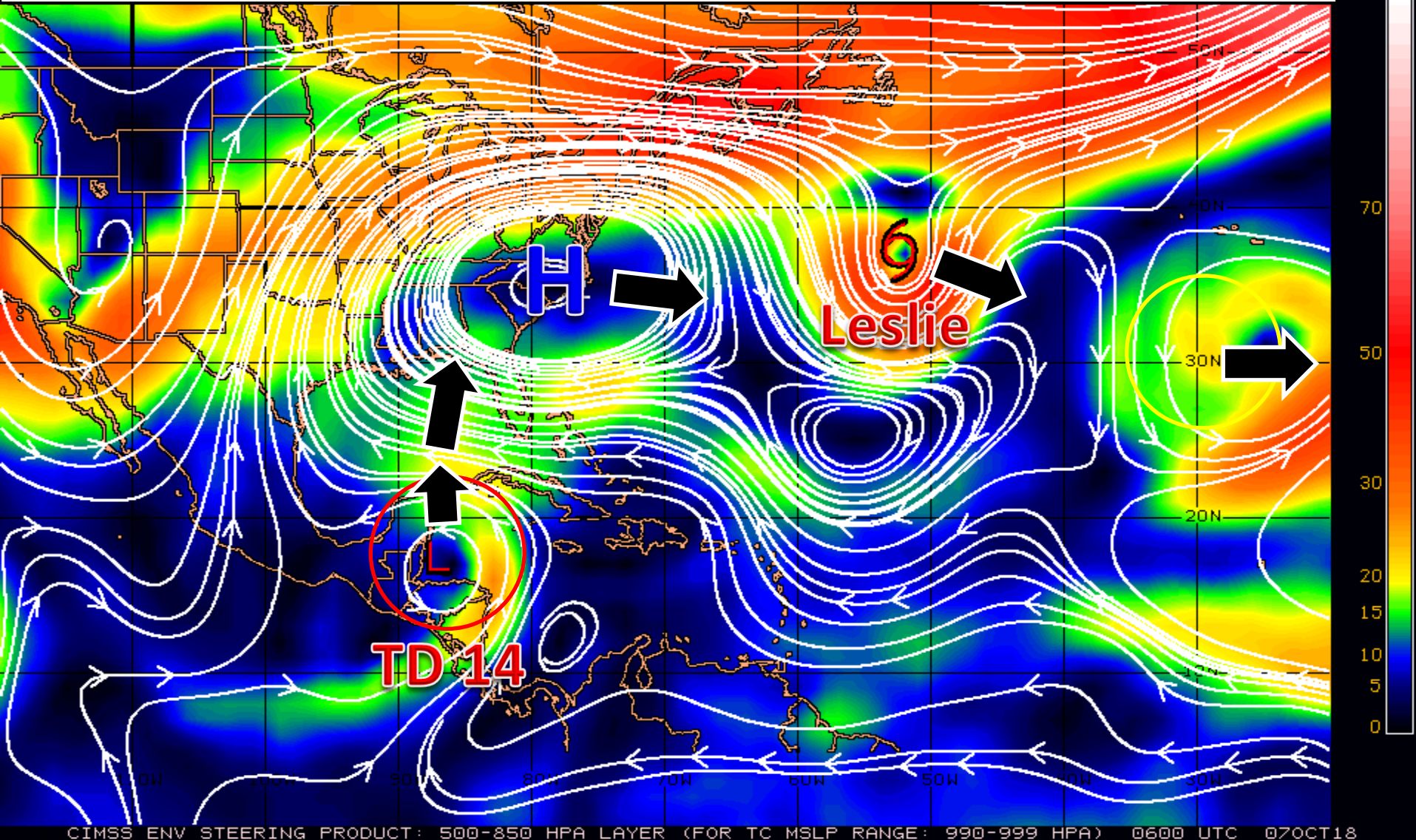
Atlantic Basin Satellite Image

12:00 07-OCT-2018 GMT Copyright © 1998-2018 WSI Corporation <http://www.wsi.com>



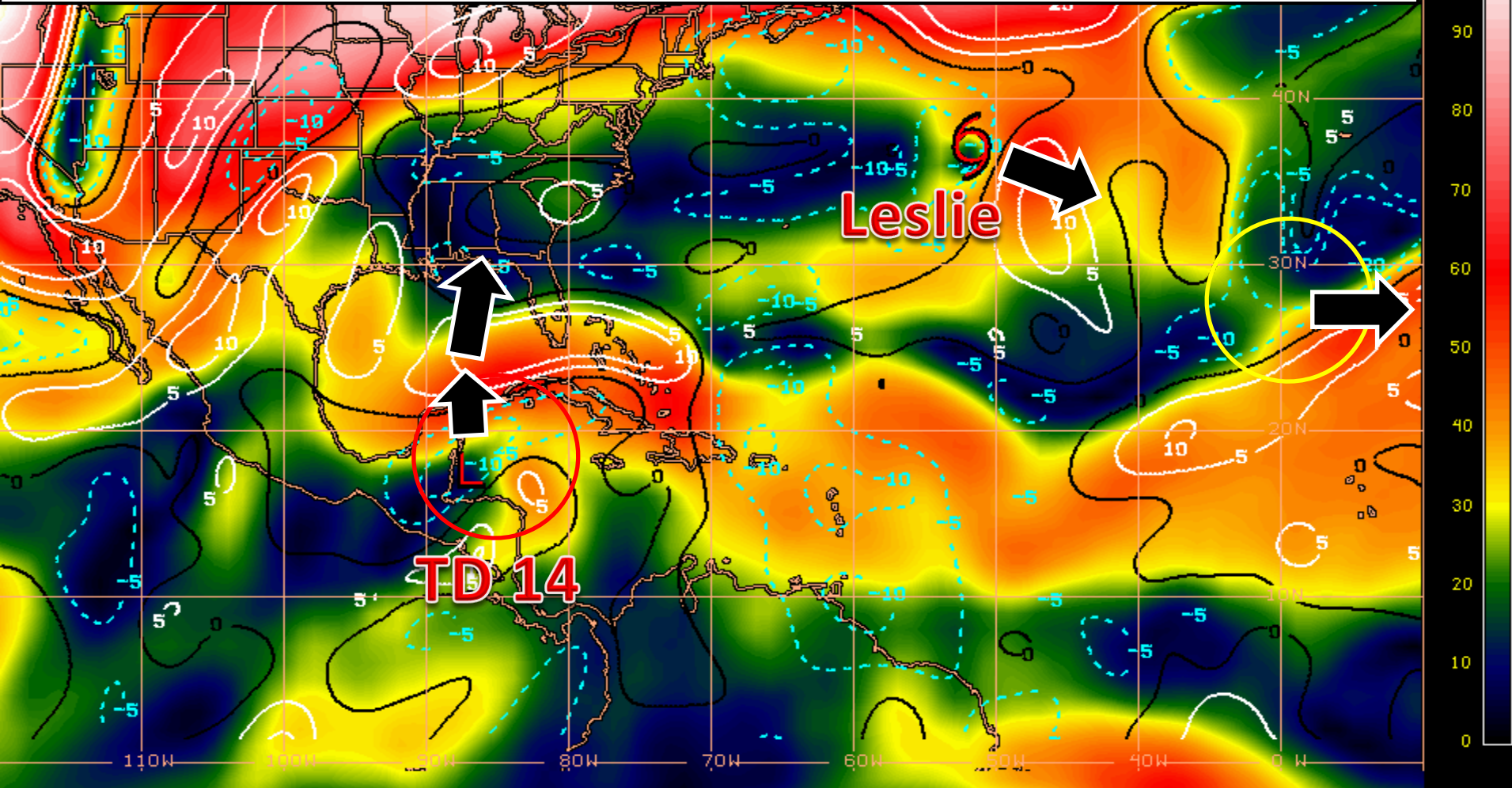
Steering Pattern

TD 14 is currently being blocked by a large area of high pressure which will result in little movement today. However, the high will weaken and shift eastward, allowing TD 14 to move northward tomorrow and Tuesday. Leslie and the non-tropical low will continue to move east or southeast.



Wind Shear (shaded) and Wind Shear Tendencies (contoured)

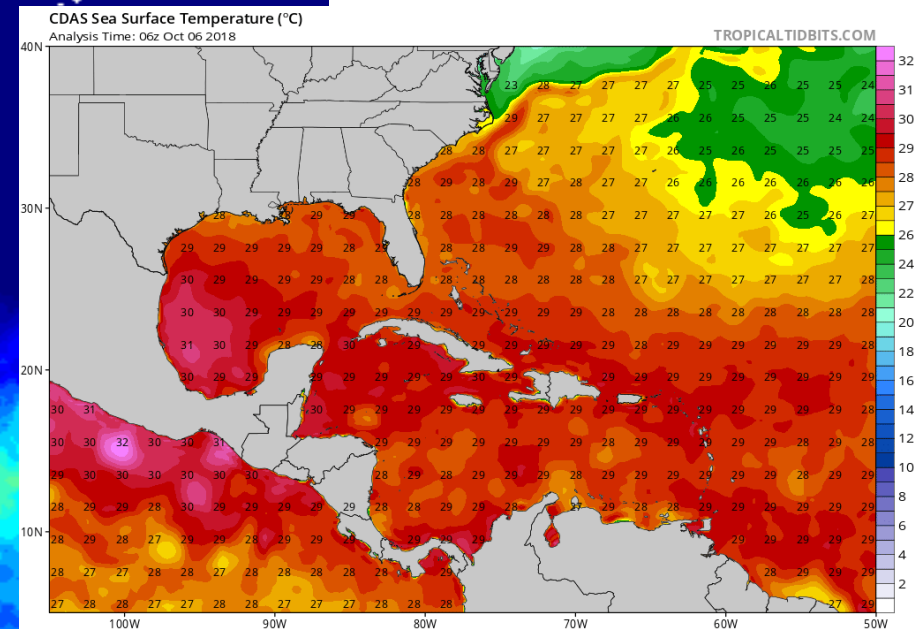
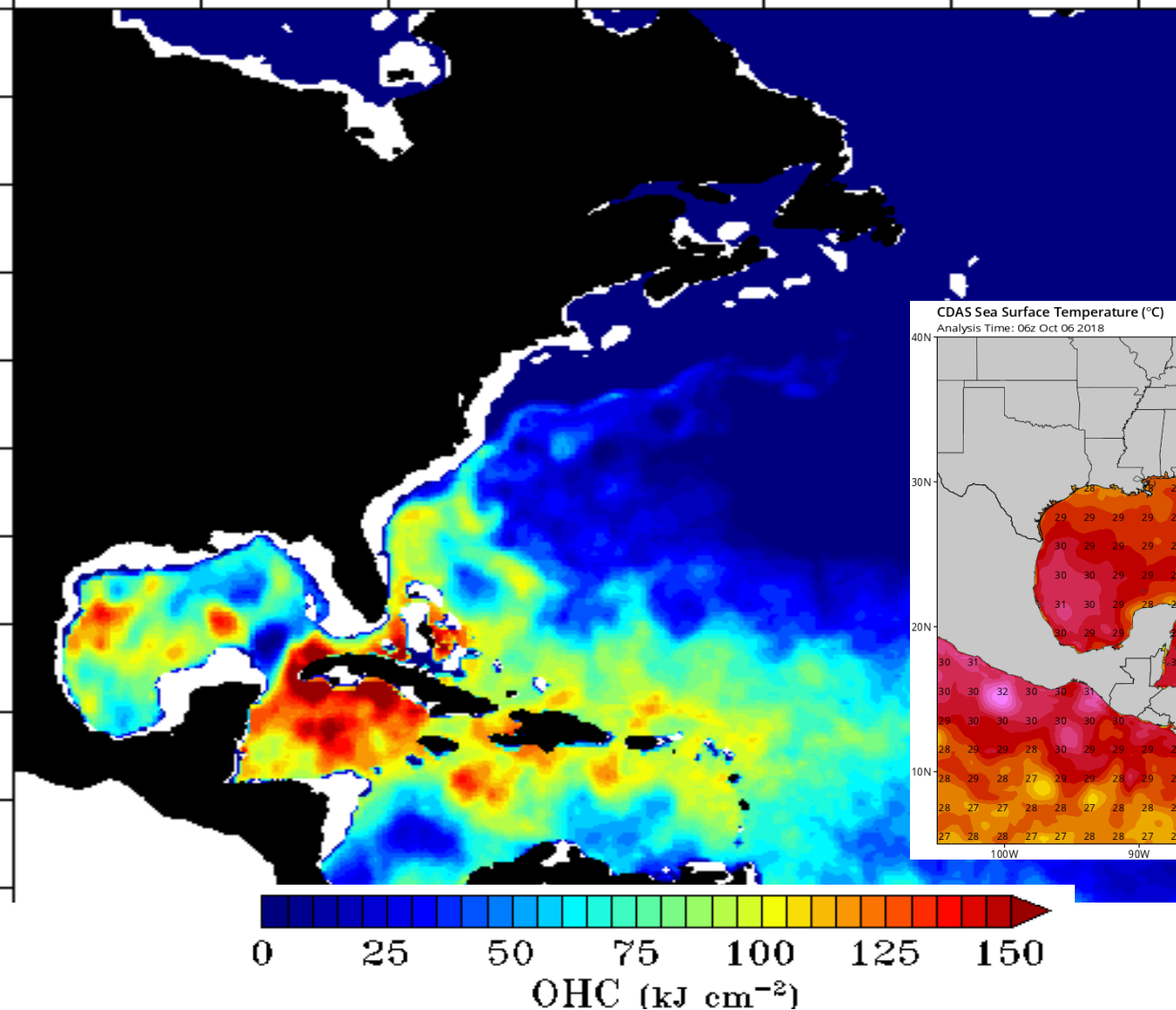
Strong wind shear in the northwestern Caribbean and Yucatan Channel will prohibit any rapid development today. However, this wind shear is forecast to relax which will allow strengthening of TD 14 into a tropical storm or hurricane. Leslie and the non-tropical low will see increasing wind shear over the coming days.



Current Sea Temperatures and Ocean Heat Content

Ocean Heat Content: 10/06/2018

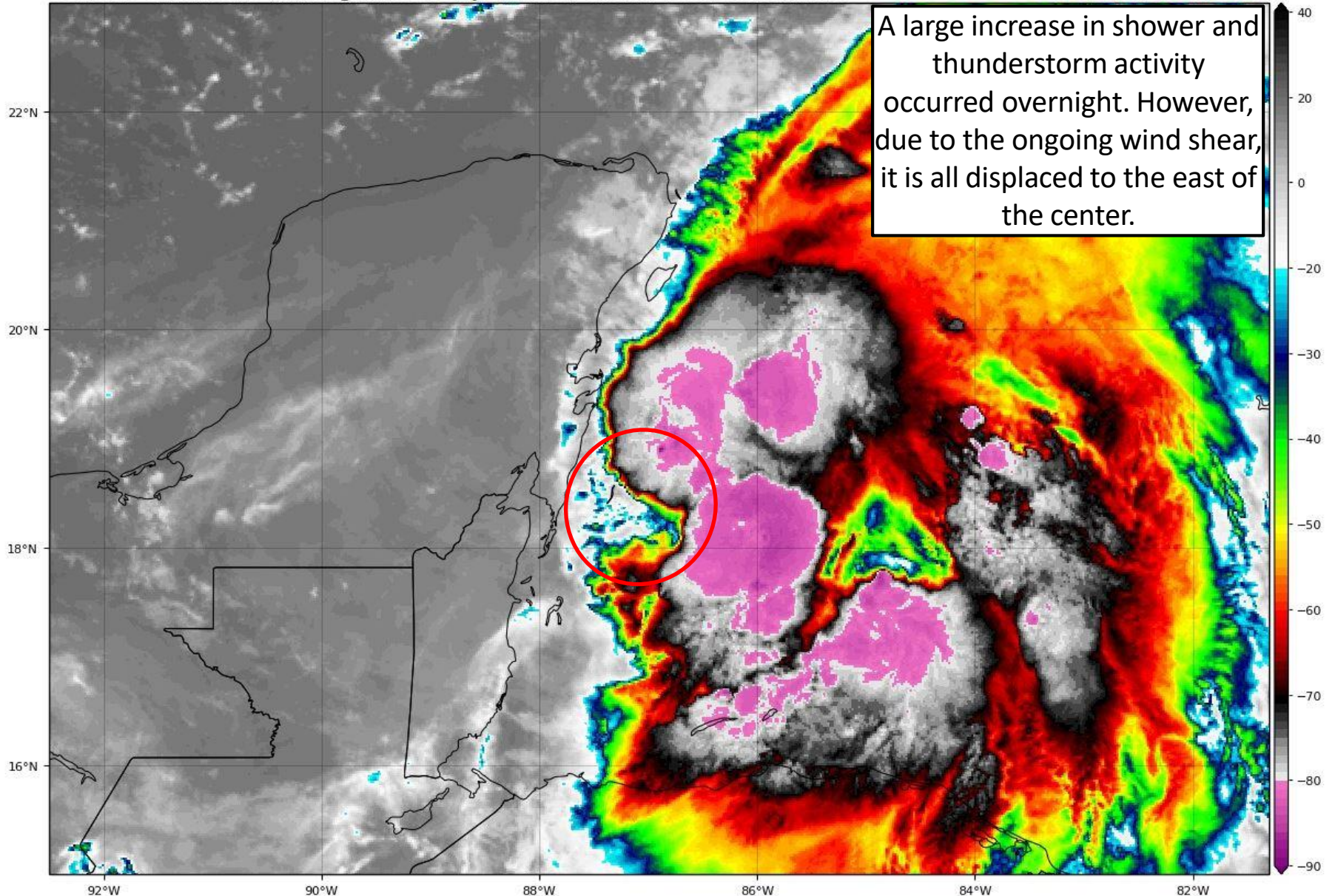
Ocean temperatures and the depth of warm water (heat content) is sufficient for development in the Caribbean and central Gulf.



Tropical Depression #14 Satellite Image

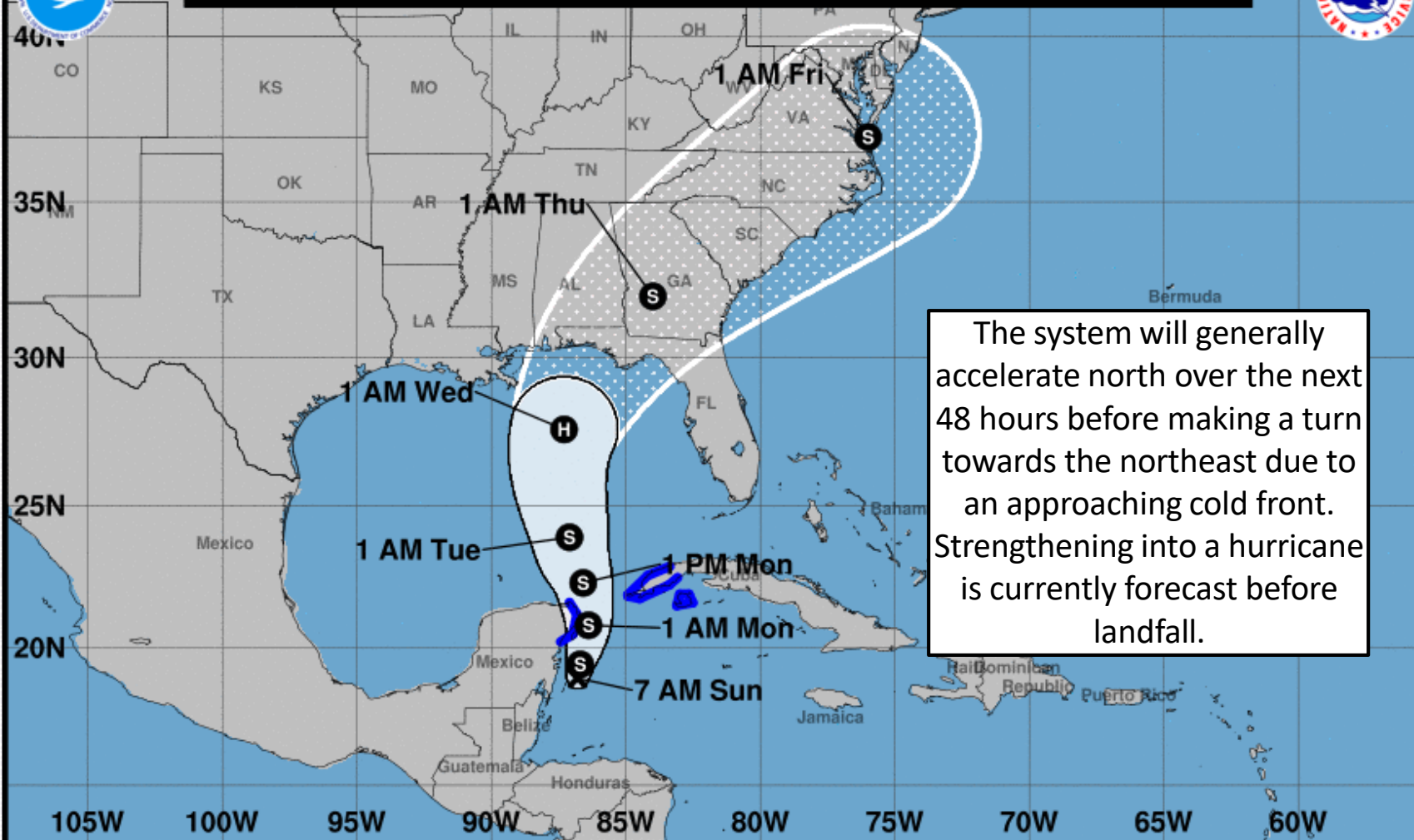
GOES-16 Channel 13 (IR) Brightness Temperature (°C) at 12:50Z Oct 07, 2018

TROPICALTIDBITS.COM





Note: The cone contains the probable path of the storm center but does not show the size of the storm. Hazardous conditions can occur outside of the cone.



Tropical Depression Fourteen
Sunday October 07, 2018
7 AM CDT Intermediate Advisory 3A
NWS National Hurricane Center

Current information: x
Center location 18.9 N 86.8 W
Maximum sustained wind 35 mph
Movement N at 3 mph

Forecast positions:
● Tropical Cyclone ○ Post/Potential TC
Sustained winds: D < 39 mph
S 39-73 mph H 74-110 mph M > 110 mph

Potential track area:

Day 1-3 Day 4-5

Watches:

Hurricane Trop Stm

Warnings:

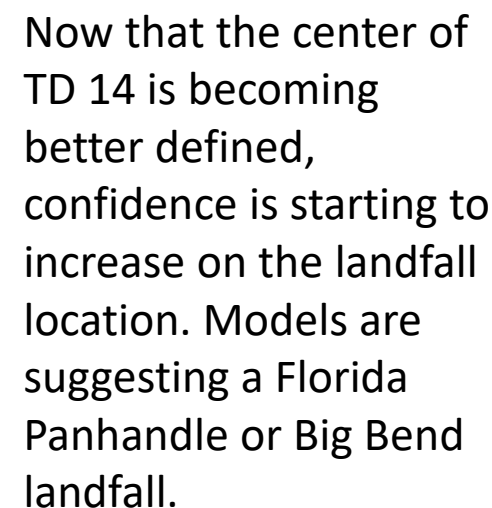
Hurricane Trop Stm

Current wind extent:

Hurricane Trop Stm

Initialized at 06z Oct 07 2018

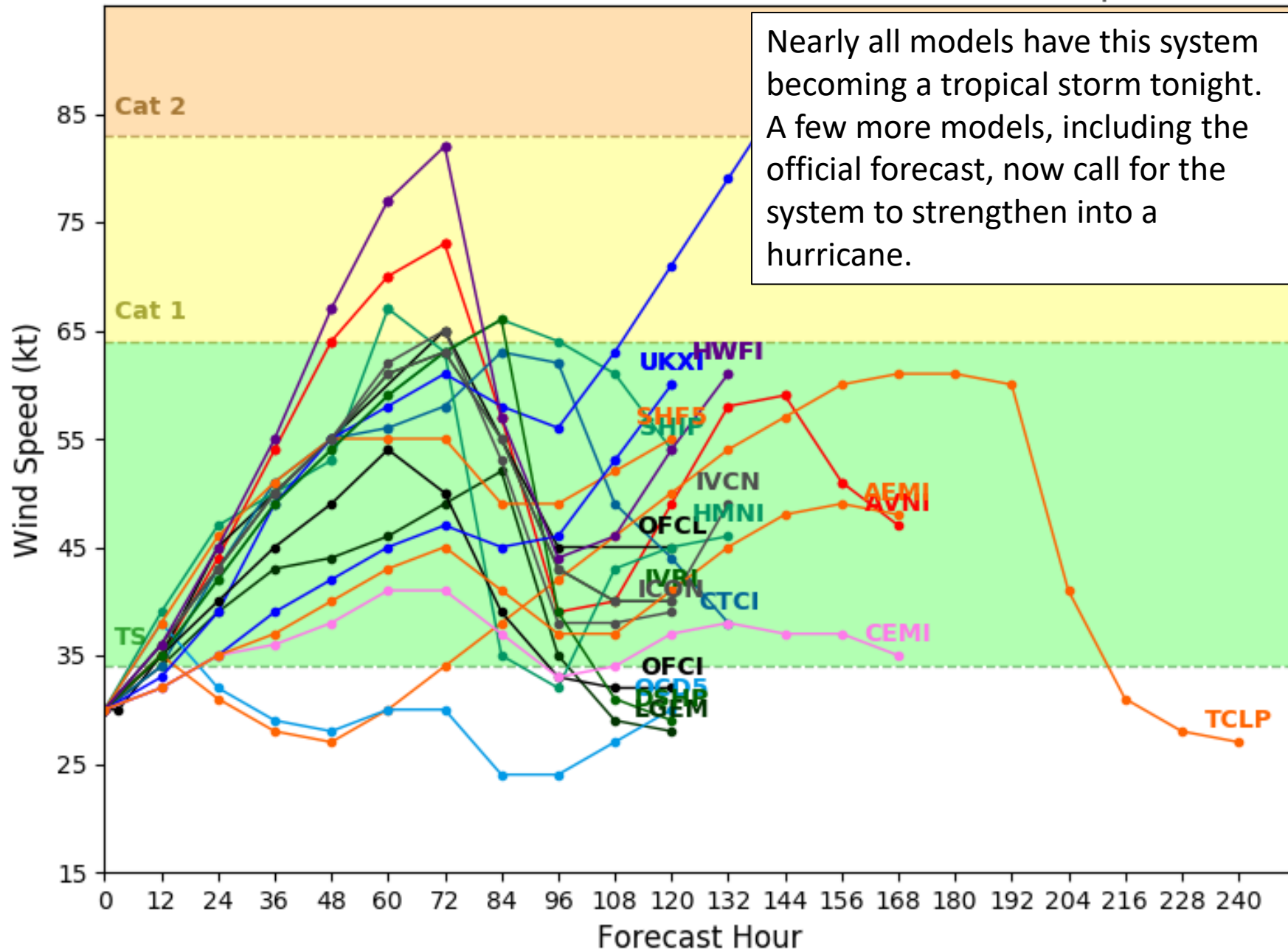
Current Model Tracks



Tropical Depression 14L Model Intensity Guidance

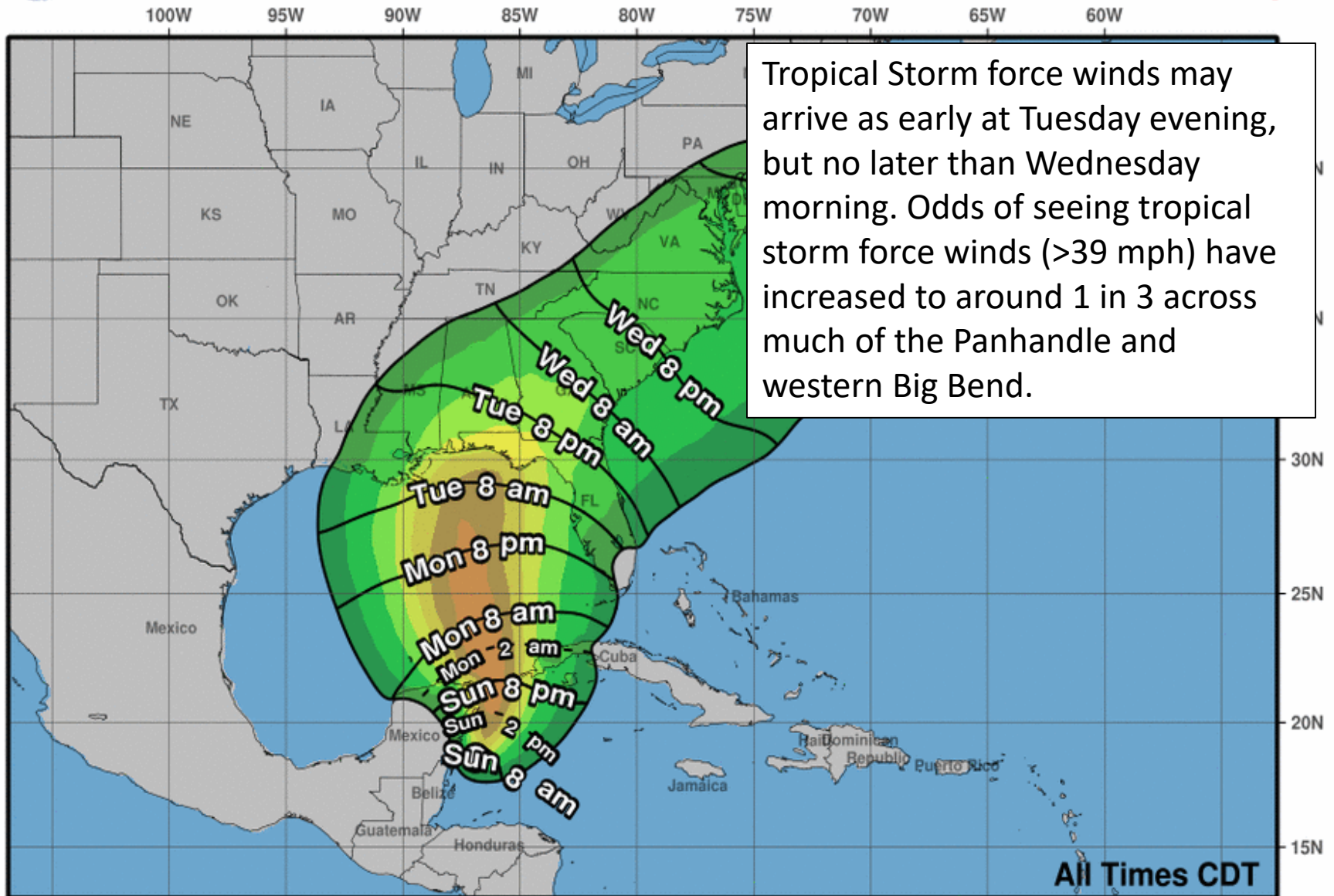
Initialized at 06z Oct 07 2018

Levi Cowan - tropicaltidbits.com





Earliest Reasonable Arrival Time of Tropical-Storm-Force Winds

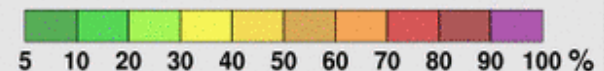


Tropical Storm force winds may arrive as early at Tuesday evening, but no later than Wednesday morning. Odds of seeing tropical storm force winds (>39 mph) have increased to around 1 in 3 across much of the Panhandle and western Big Bend.

Tropical Depression Fourteen
Sun. Oct. 7, 2018 4 am CDT
Advisory 3

Storm Location & Wind Speed
○ < 34 kt (39 mph)
○ 34-63 kt (39-73 mph)
● ≥ 64 kt (74 mph)

5-day chance of receiving sustained 34+ kt (39+ mph) winds

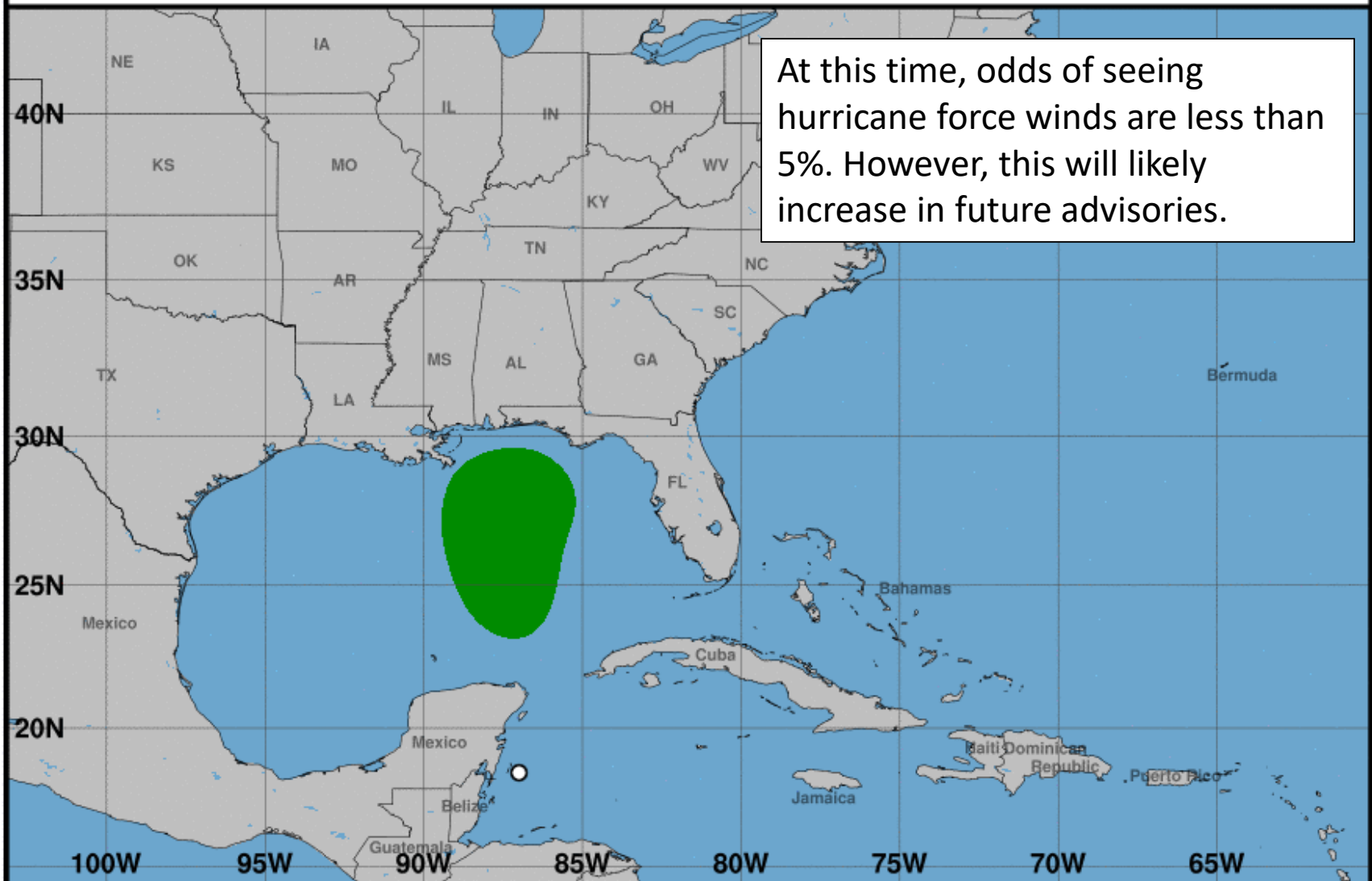




Hurricane-Force Wind Speed Probabilities

For the 120 hours (5.00 days) from 1 AM CDT SUN OCT 07 to 1 AM CDT FRI OCT 12

At this time, odds of seeing hurricane force winds are less than 5%. However, this will likely increase in future advisories.



Probability of hurricane-force winds (1-minute average ≥ 74 mph) from all tropical cyclones

○ indicates Tropical Depression Fourteen center location at 1 AM CDT SUN OCT 07, 2018 (Forecast/Advisory #3)



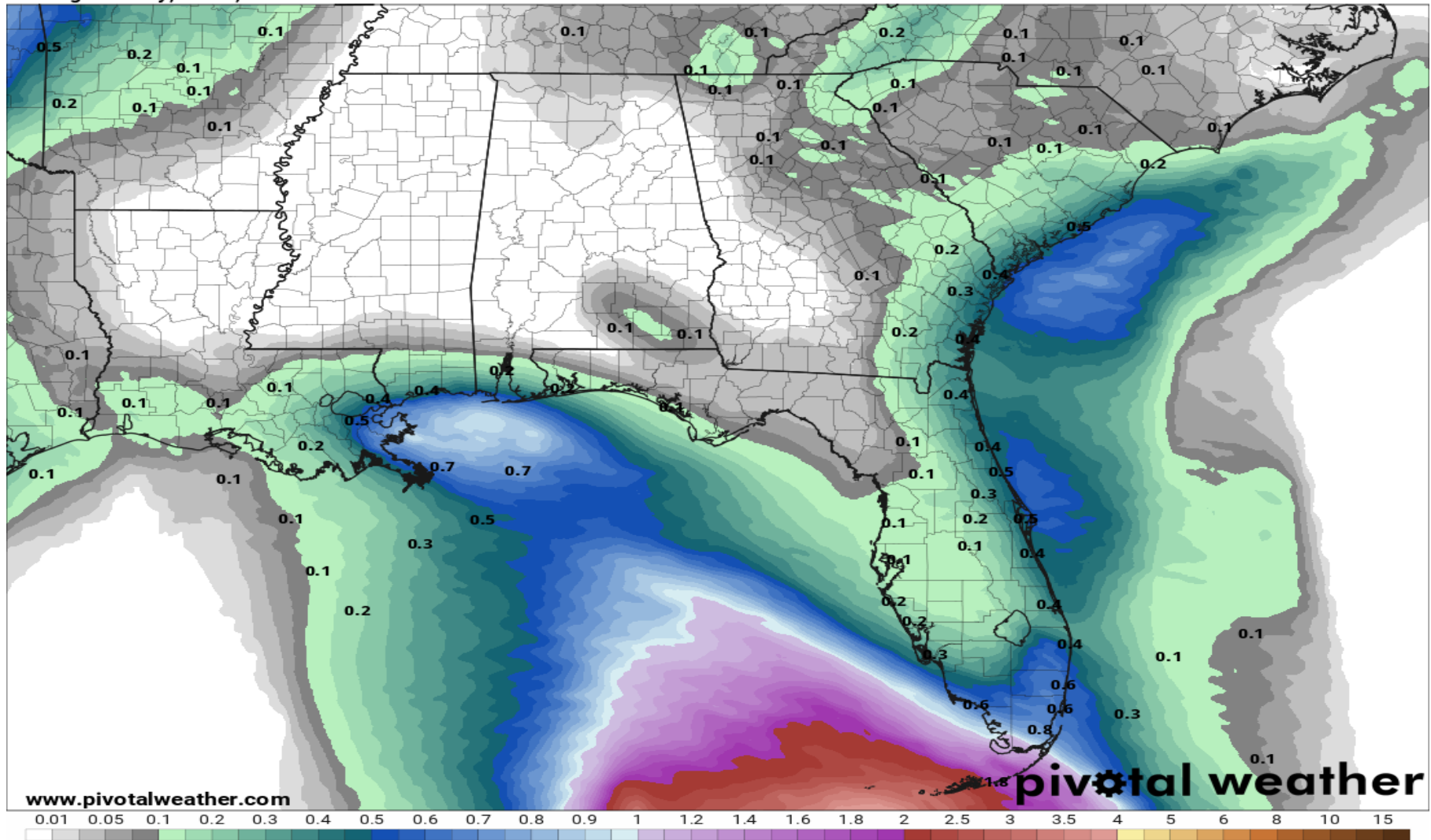
Forecast Cumulative Rain Totals – Next 48 Hours

Rain bands from Tropical Depression 14 will begin to impact the Florida Keys later today into tomorrow. Localized rainfall amounts of 2-4" will be possible along with an increased threat of waterspouts. Winds will be breezy, out of the east and southeast at 20-30 mph.

48-Hour Precipitation (in)

Ending Tuesday, Oct. 9, 2018 at 8 a.m. EDT

Init: Sun 2018-10-07 12z WPC



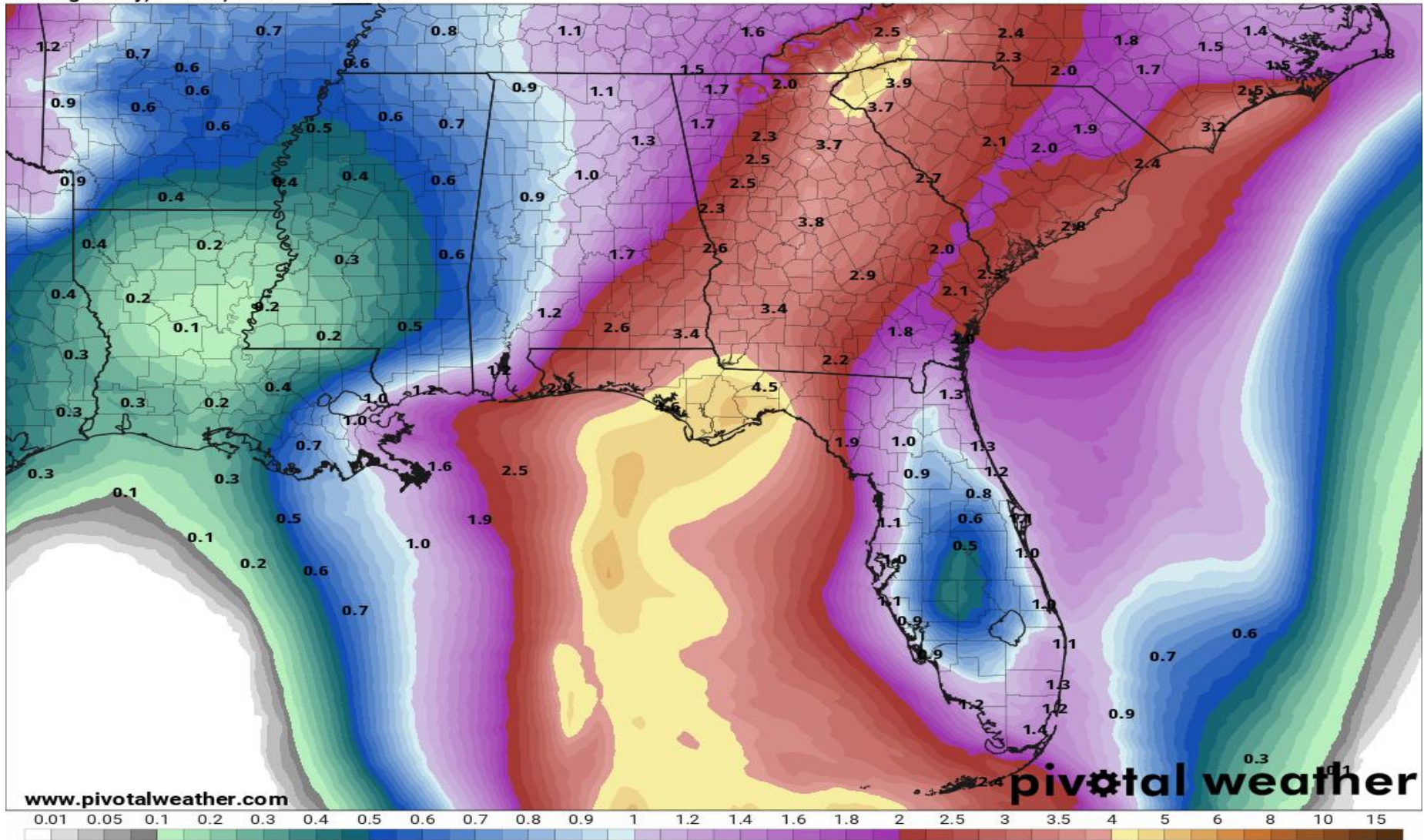
Forecast Cumulative Rain Totals – Next 5 Days

Actual rain totals will be dependent on the strength and track of TD 14 and this graphic does not account for isolated higher totals. However, a general 3-6" can be expected across the Panhandle and Big Bend Tuesday-Thursday.

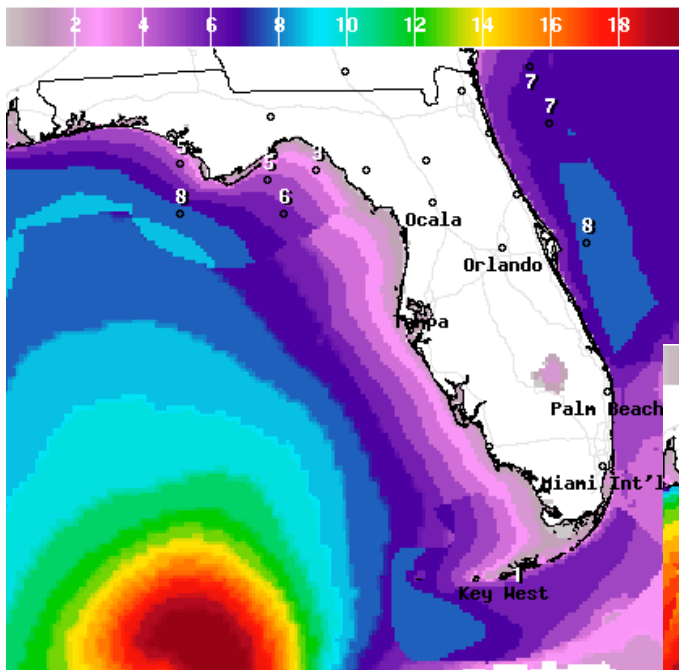
120-Hour Precipitation (in)

Ending Friday, Oct. 12, 2018 at 8 a.m. EDT

Init: Sun 2018-10-07 12z WPC

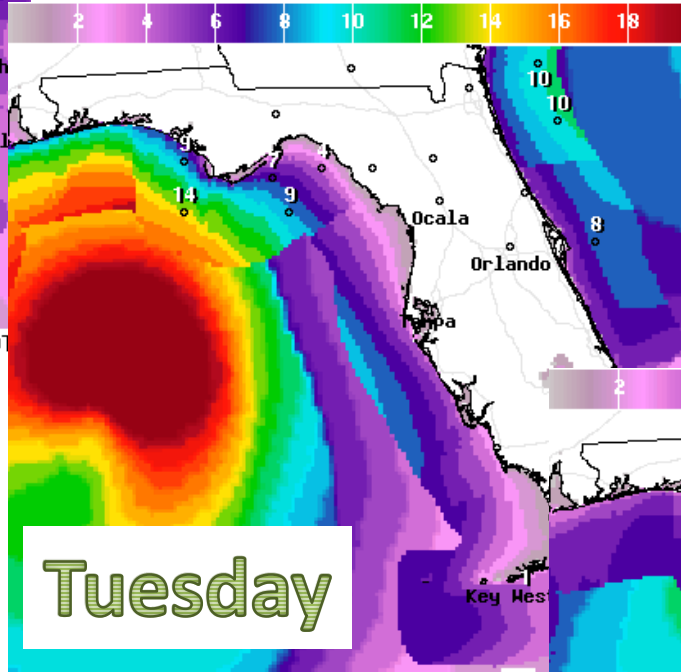


Forecast Wave Heights



Wave Height(ft) Ending Mon Oct 08 2018 8PM EDT

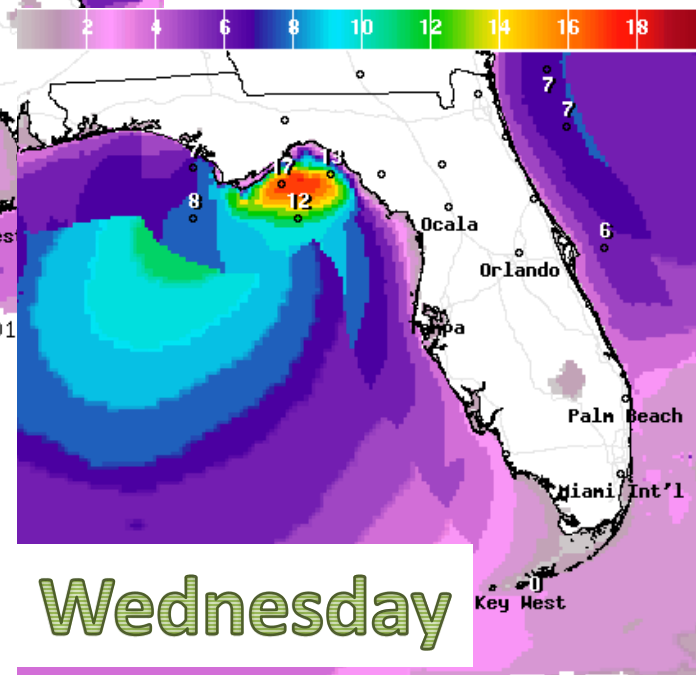
Monday



Wave Height(ft) Ending Tue Oct 09 2018 8PM EDT

Tuesday

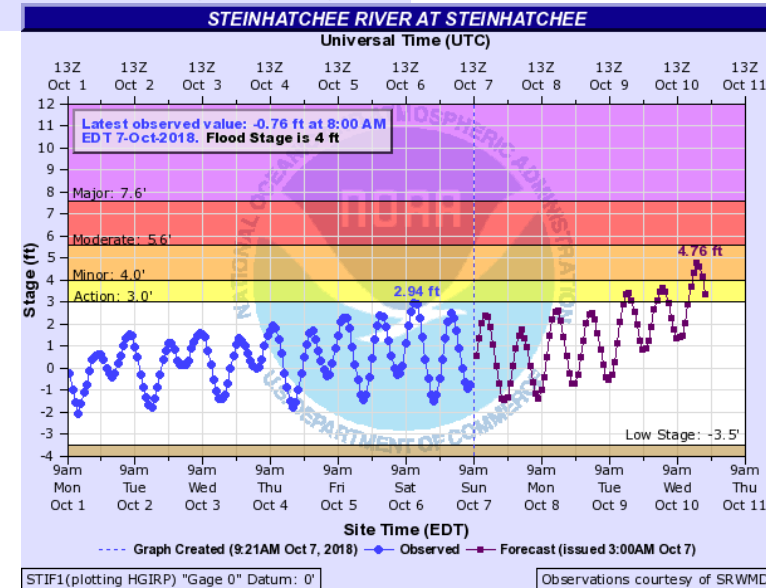
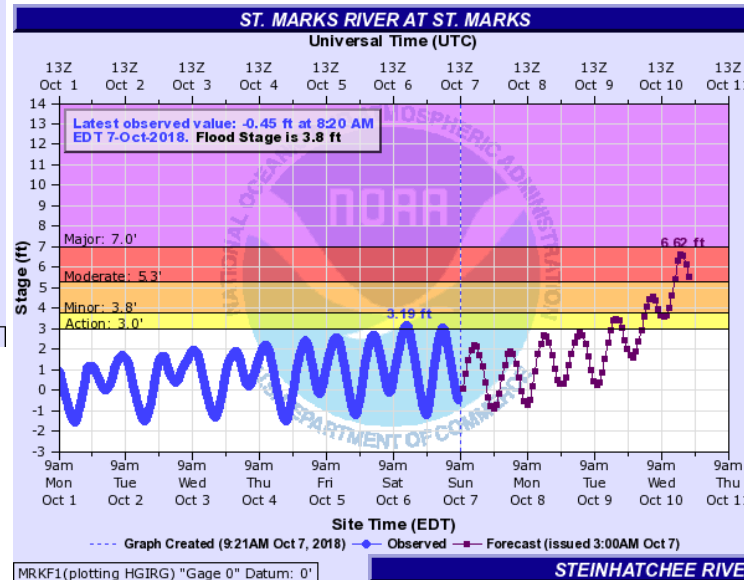
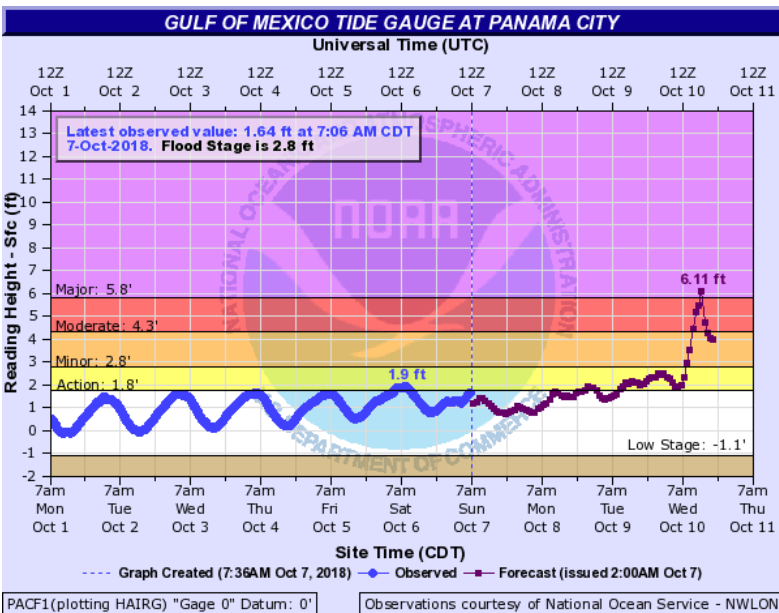
Ocean swells will increase the rip current threat along the Panhandle coast and West Coast starting tomorrow. Wave heights along the Panhandle and Big Bend may peak at 8-10' at the beach and much higher offshore.



Wave Height(ft) Ending Wed Oct 10 2018 8PM EDT

Wednesday

Forecast Water Levels at Select Tidal Gauges



Exact storm surge amounts will depend on exact track and intensity! More details will become available tomorrow morning.

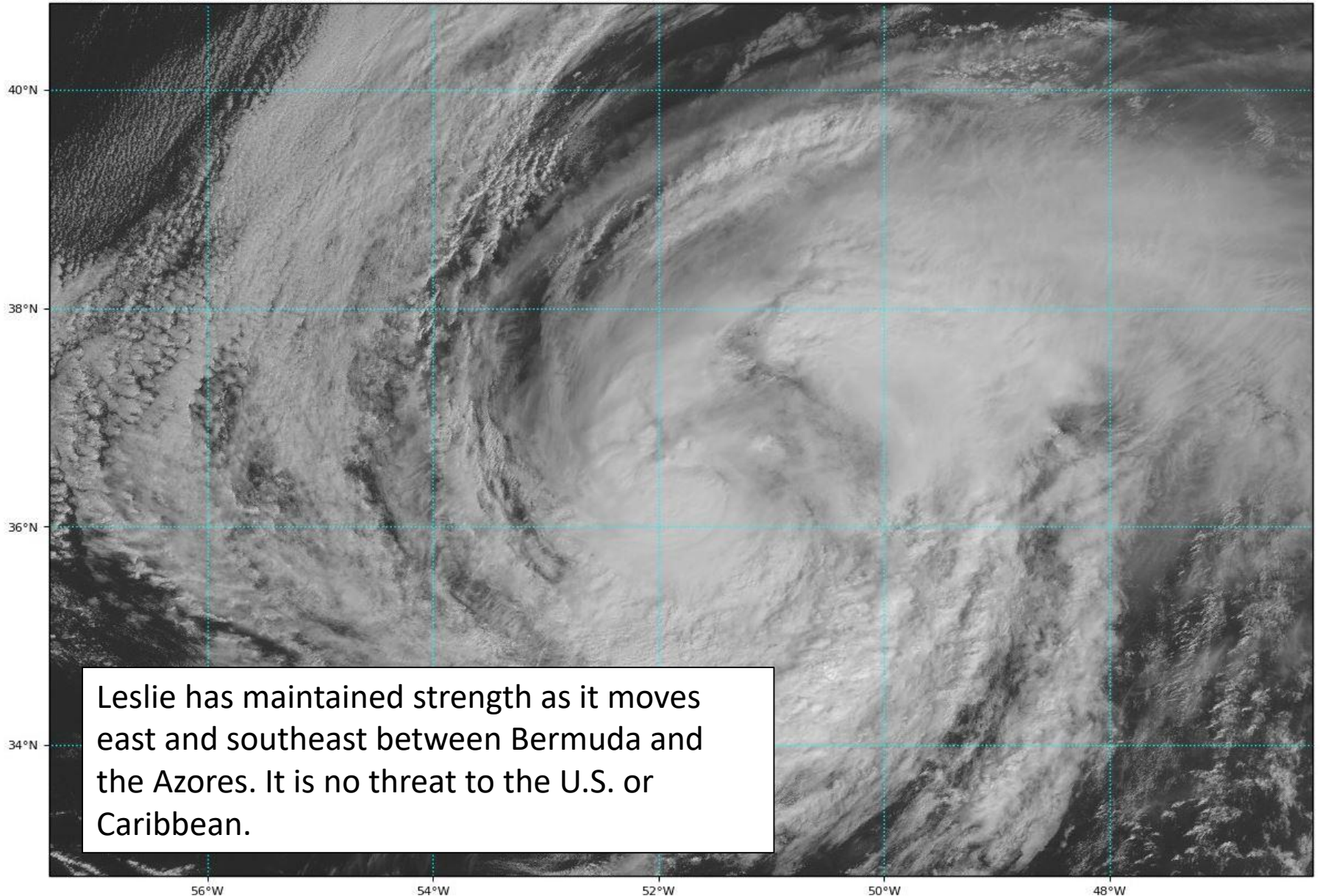
Even with a track into the Panhandle, some surge should still be expected in Apalachee Bay.

<https://www.weather.gov/serfc/>

Tropical Storm Leslie Satellite Image

GOES-16 Channel 2 (visible) Reflectance at 13:20Z Oct 07, 2018

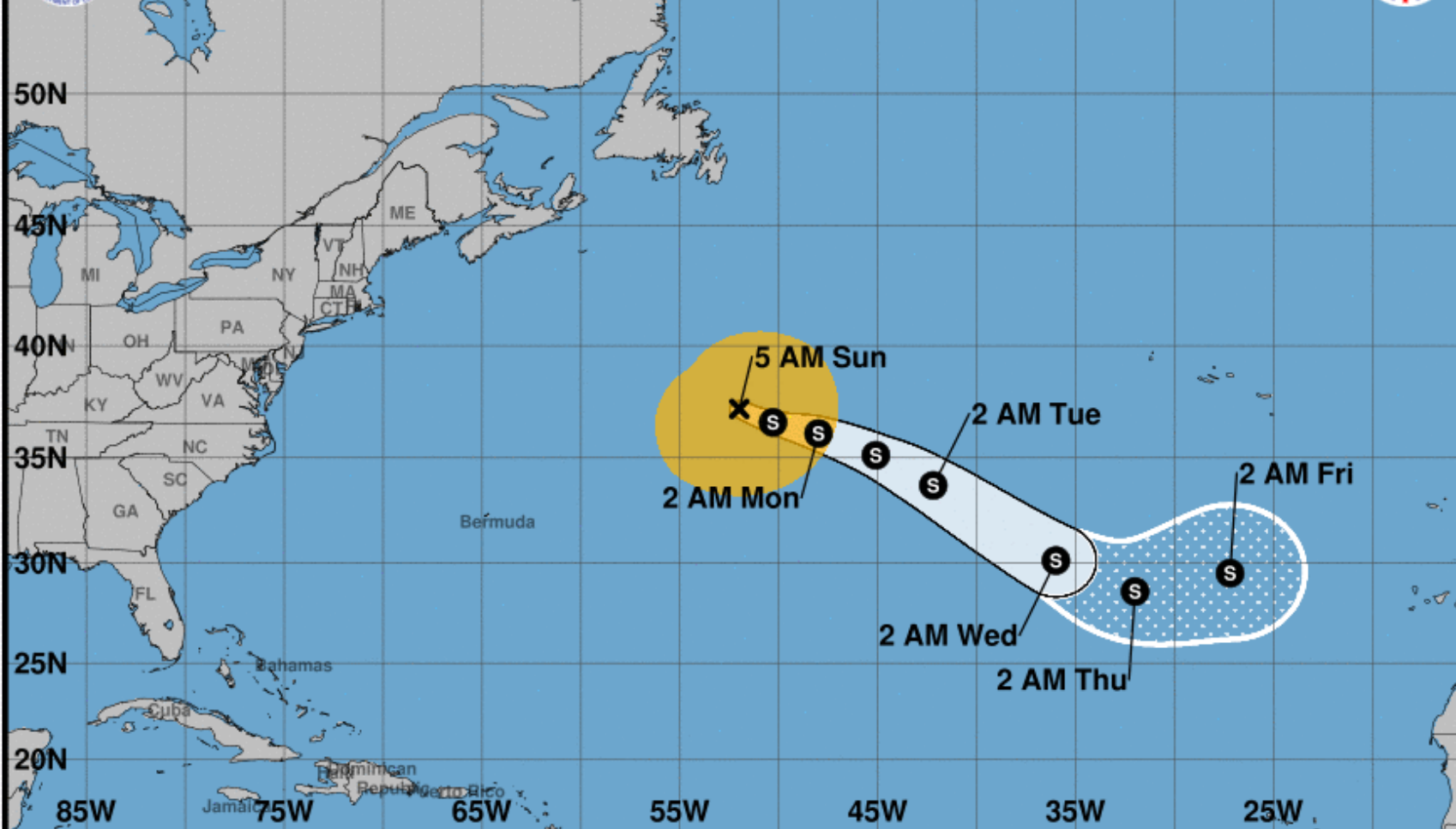
TROPICALTIDBITS.COM



Leslie has maintained strength as it moves east and southeast between Bermuda and the Azores. It is no threat to the U.S. or Caribbean.



Note: The cone contains the probable path of the storm center but does not show the size of the storm. Hazardous conditions can occur outside of the cone.



Tropical Storm Leslie

Sunday October 07, 2018

5 AM AST Advisory 44

NWS National Hurricane Center

Current information: x

Center location 37.2 N 52.0 W

Maximum sustained wind 60 mph

Movement E at 12 mph

Forecast positions:

● Tropical Cyclone ○ Post/Potential TC

Sustained winds: D < 39 mph

S 39-73 mph H 74-110 mph M > 110 mph

Potential track area:

Day 1-3 Day 4-5

Watches:

Hurricane Trop Stm

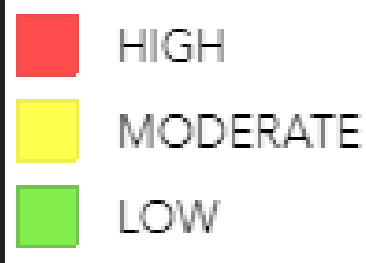
Warnings:

Hurricane Trop Stm

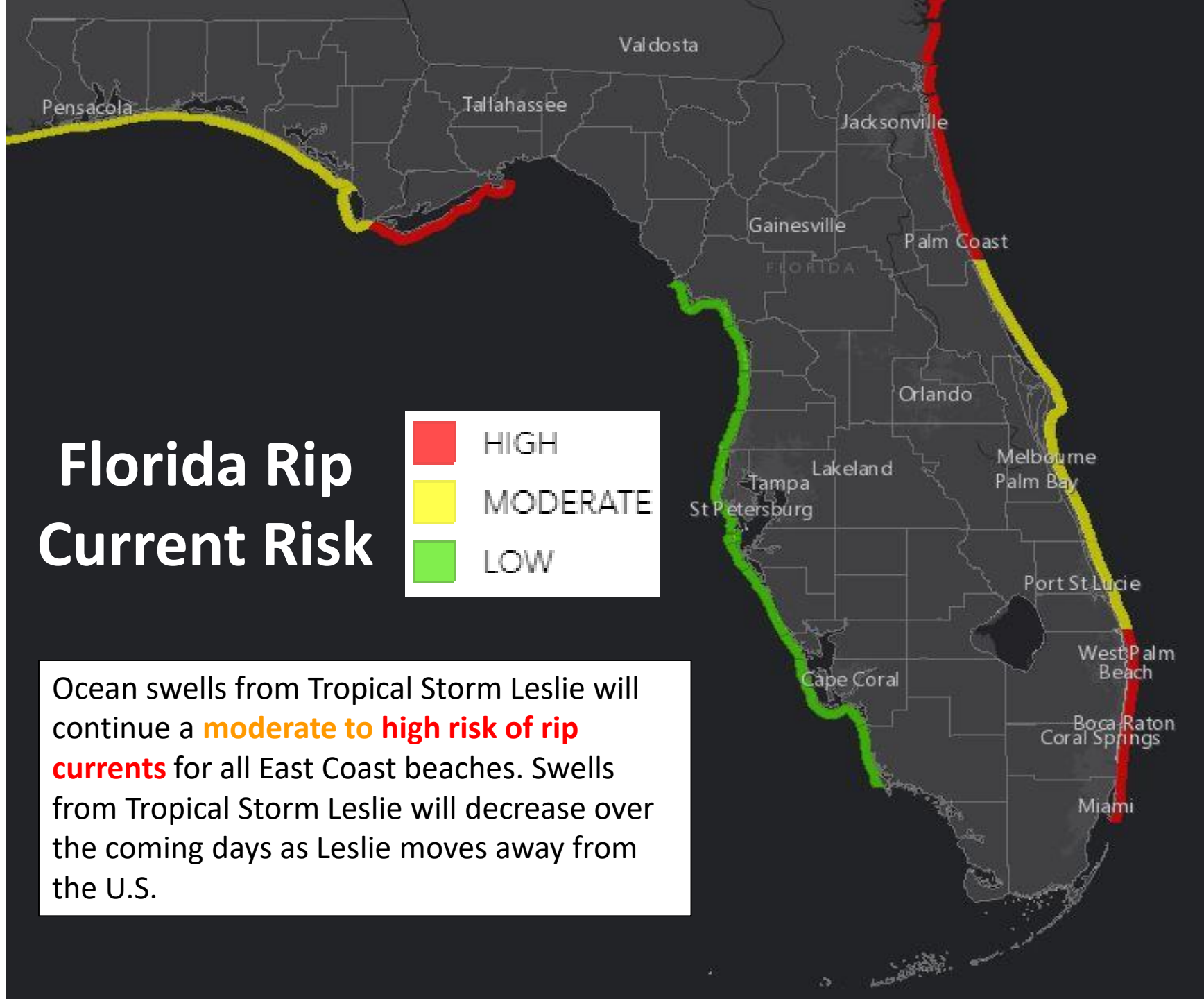
Current wind extent:

Hurricane Trop Stm

Florida Rip Current Risk



Ocean swells from Tropical Storm Leslie will continue a **moderate to high risk of rip currents** for all East Coast beaches. Swells from Tropical Storm Leslie will decrease over the coming days as Leslie moves away from the U.S.





Five-Day Graphical Tropical Weather Outlook

National Hurricane Center Miami, Florida



Disturbance 1

1. A broad non-tropical low pressure system located a few hundred miles south of the Azores is producing a large area of disorganized showers and thunderstorms, mainly to the north and east of its center. This system could gradually acquire subtropical or tropical characteristics over the next couple of days while it moves slowly eastward. By Tuesday, environmental conditions are expected to become unfavorable for further development to occur. Additional information on this system can be found in high seas forecasts issued by Meteo France.

NO THREAT TO U.S. OR CARIBBEAN

- * Formation chance through 48 hours...**low**...30 percent.
- * Formation chance through 5 days...**low**...30 percent.

1
(30%)

8:00 am EDT
Sun Oct 7 2018

100W 90W 80W 70W 60W 50W 40W 30W 20W

Current Disturbances and Five-Day Cyclone Formation Chance: < 40% 40-60% > 60%

Tropical or Sub-Tropical Cyclone: Depression Storm Hurricane

Post-Tropical Cyclone or Remnants

Summary

Tropical Storm Leslie:

- At 5 AM EDT Sunday, Tropical Storm Leslie was located about 800 miles east-northeast of Bermuda.
- Maximum sustained winds remain near 60 mph, and small fluctuations in intensity are expected over the next several days
- Leslie has made its eastward turn and is now moving east at 12 mph. Leslie will turn east-southeast or southeast and accelerate through the middle of next week.

Northeast Atlantic Low

- A broad non-tropical low pressure system located a few hundred miles south of the Azores has a 30% (low) chance of acquiring tropical or sub-tropical characteristics in the next 48 hours or 5 days. This system is no threat to the U.S. or Caribbean.

Tropical Depression #14

- At 5 AM EDT Sunday, PTC#14 became well defined and advisories began on Tropical Depression #14.
- TD #14 is located 100 miles east-southeast of Chetumal, Mexico, or about 820 miles south of Pensacola, Florida.
- Maximum sustained winds are near 35 mph and TD 14 is moving north at 3 mph.
- TD 14 is expected to strengthen into Tropical Storm Michael tonight and is forecast to be a hurricane by early Wednesday.
- Landfall is expected sometime Wednesday between Mobile, AL and Cedar Key, FL.

Florida Outlook:

- Tropical Storm Leslie continues producing a large area of long-period swells that will impact the East Coast of Florida for the next few days, resulting in a moderate to high risk of rip currents along all Atlantic beaches.
- An increase in swells and rip current risks from TD 14 will be possible along the Florida Panhandle and West Coast as early as tomorrow. Wave heights at Panhandle and Big Bend beaches may be as high as 8-10' Tuesday night through Thursday morning.
- Exact impacts from Tropical Depression 14 will depend on exact strength and track. Hurricane, Tropical Storm, and/or Storm Surge Watches will likely be issued tomorrow morning for some of the Panhandle and Big Bend where more details will become available.
- Regardless, tropical storm conditions may arrive in the Panhandle as soon as Tuesday evening but no later than Wednesday morning.
- Widespread rainfall totals of 3-6" with locally higher amounts can be expected across the Panhandle and Big Bend.
- Storm surge values will be highest near landfall, but even with a landfall in the Panhandle some surge is still expected in Apalachee Bay.
- Increased rain chances are expected today and tomorrow across the Florida Keys. Locally 2-4" of rain.
- Isolated tornadoes will be possible, but risk and where will depend on eventual track and intensity of the system.

Another briefing packet will be issued this afternoon. For the latest information on the tropics, please visit the National Hurricane Center website at www.hurricanes.gov.



TROPICAL UPDATE

Created by:

Michael Spagnolo, Deputy State Meteorologist

Michael.Spagnolo@em.myflorida.com

State Meteorological Support Unit

Florida Division of Emergency
Management

Users wishing to subscribe (approval pending) to this distribution list, register at https://public.govdelivery.com/accounts/FLDEM/subscriber/new?topic_id=SERT_Met_Tropics.

Other reports available for subscription are available at

<https://public.govdelivery.com/accounts/FLDEM/subscriber/new?preferences=true>