



TROPICAL UPDATE

5 PM EDT

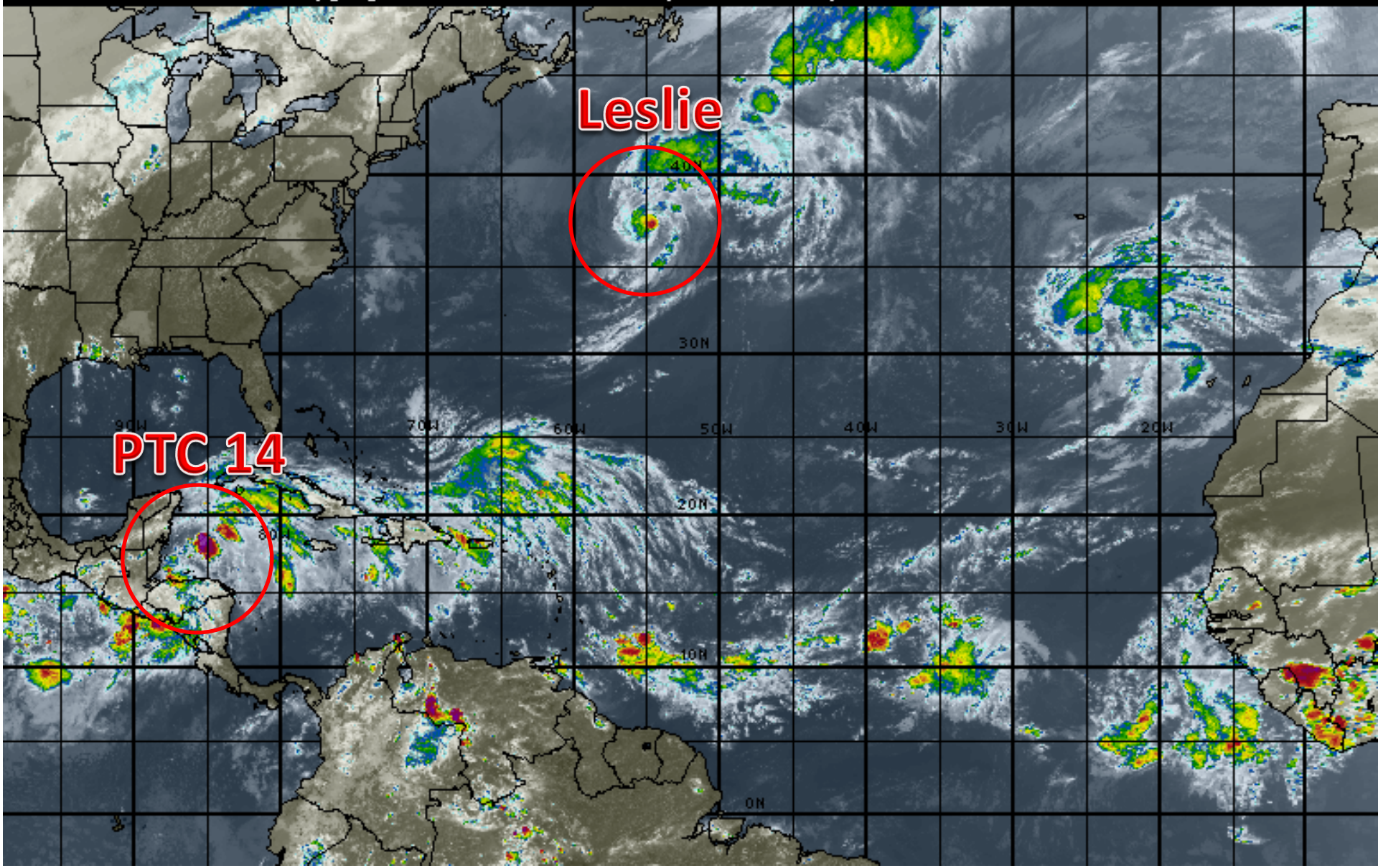
Saturday, October 6, 2018

**Tropical Storm Leslie, Potential Tropical Cyclone 14
(90%)**

This update is intended for government and emergency response officials, and is provided for informational and situational awareness purposes only. Forecast conditions are subject to change based on a variety of environmental factors. For additional information, or for any life safety concerns with an active weather event please contact your County Emergency Management or Public Safety Office, local National Weather Service forecast office or visit the National Hurricane Center website at www.nhc.noaa.gov.

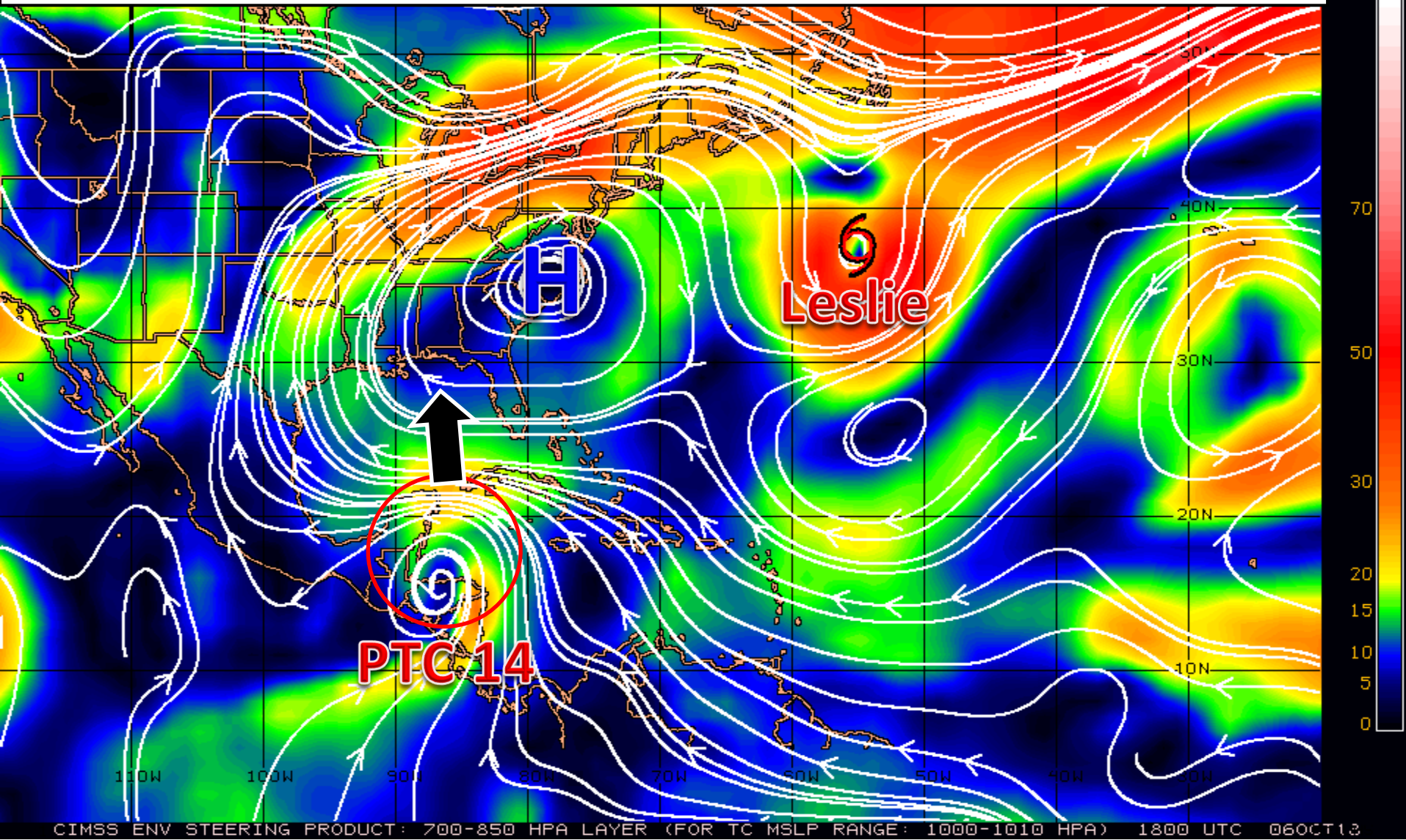
Atlantic Basin Satellite Image

18:00 06-OCT-2018 GMT Copyright © 1998-2018 WSI Corporation <http://www.wsi.com>



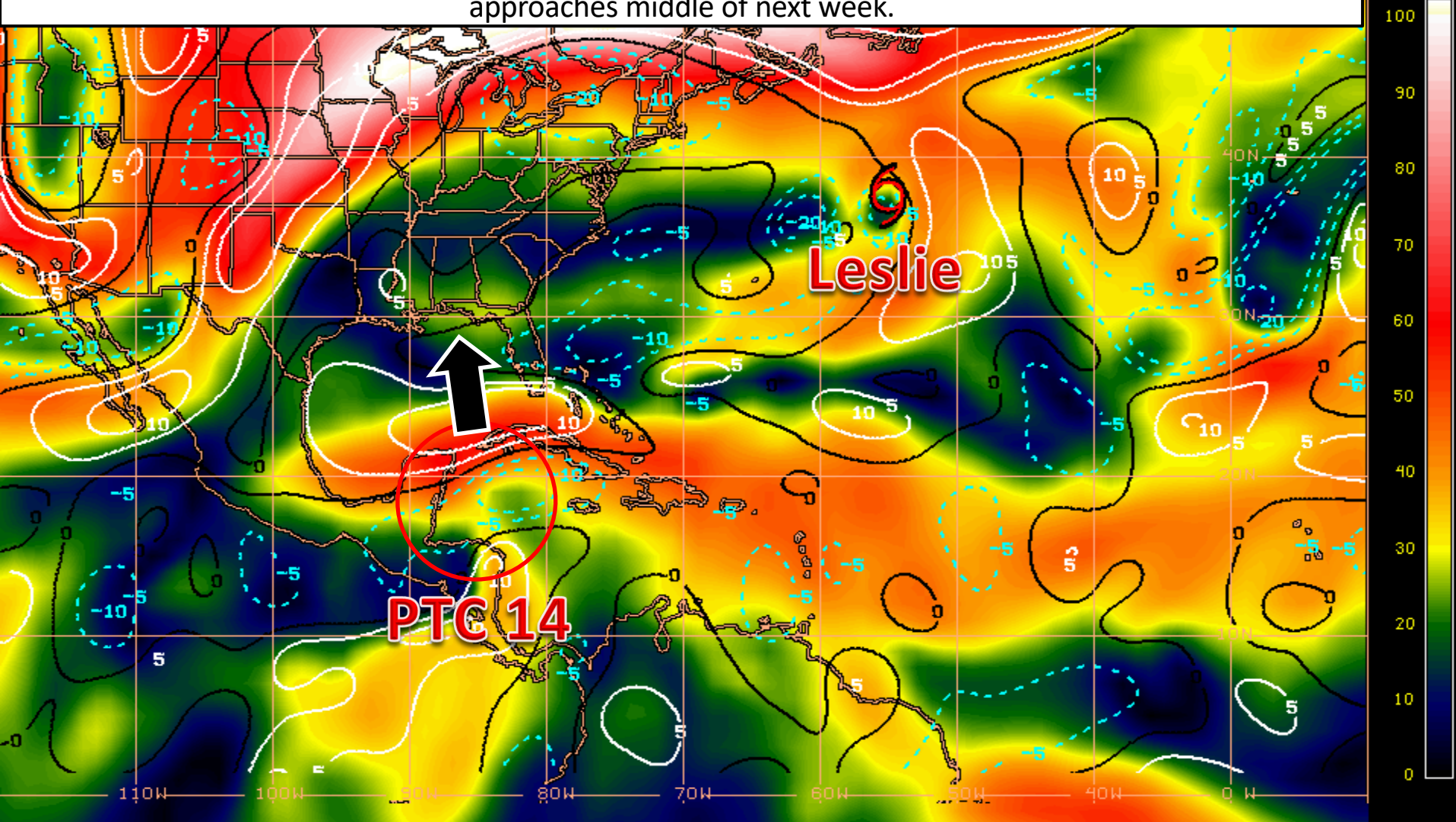
Steering Pattern

PTC 14 is currently being blocked by a large area of high pressure which will result in little movement over the next day or so. The high will weaken and shift eastward, allowing PTC 14 to move northward early next week.



Wind Shear (shaded) and Wind Shear Tendencies (contoured)

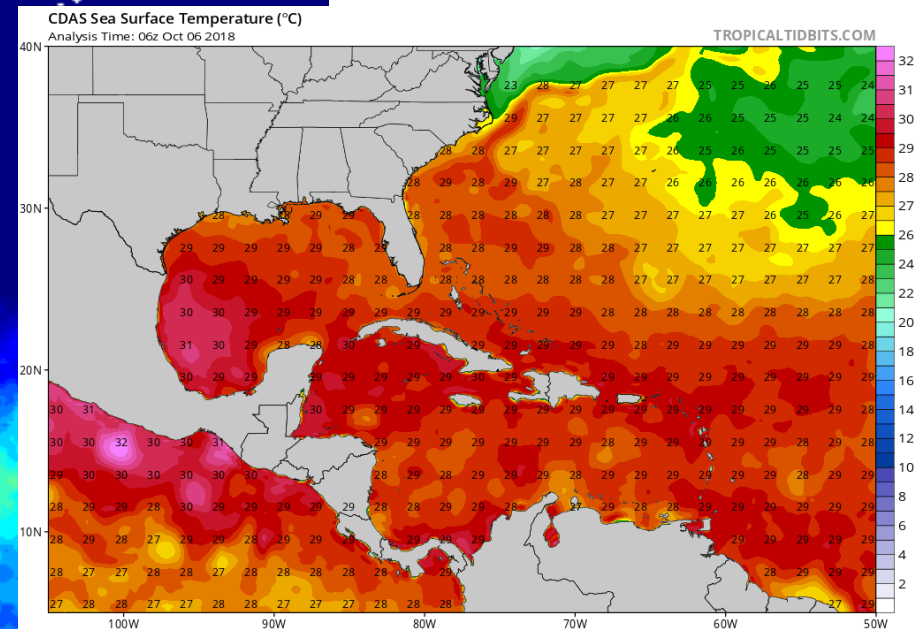
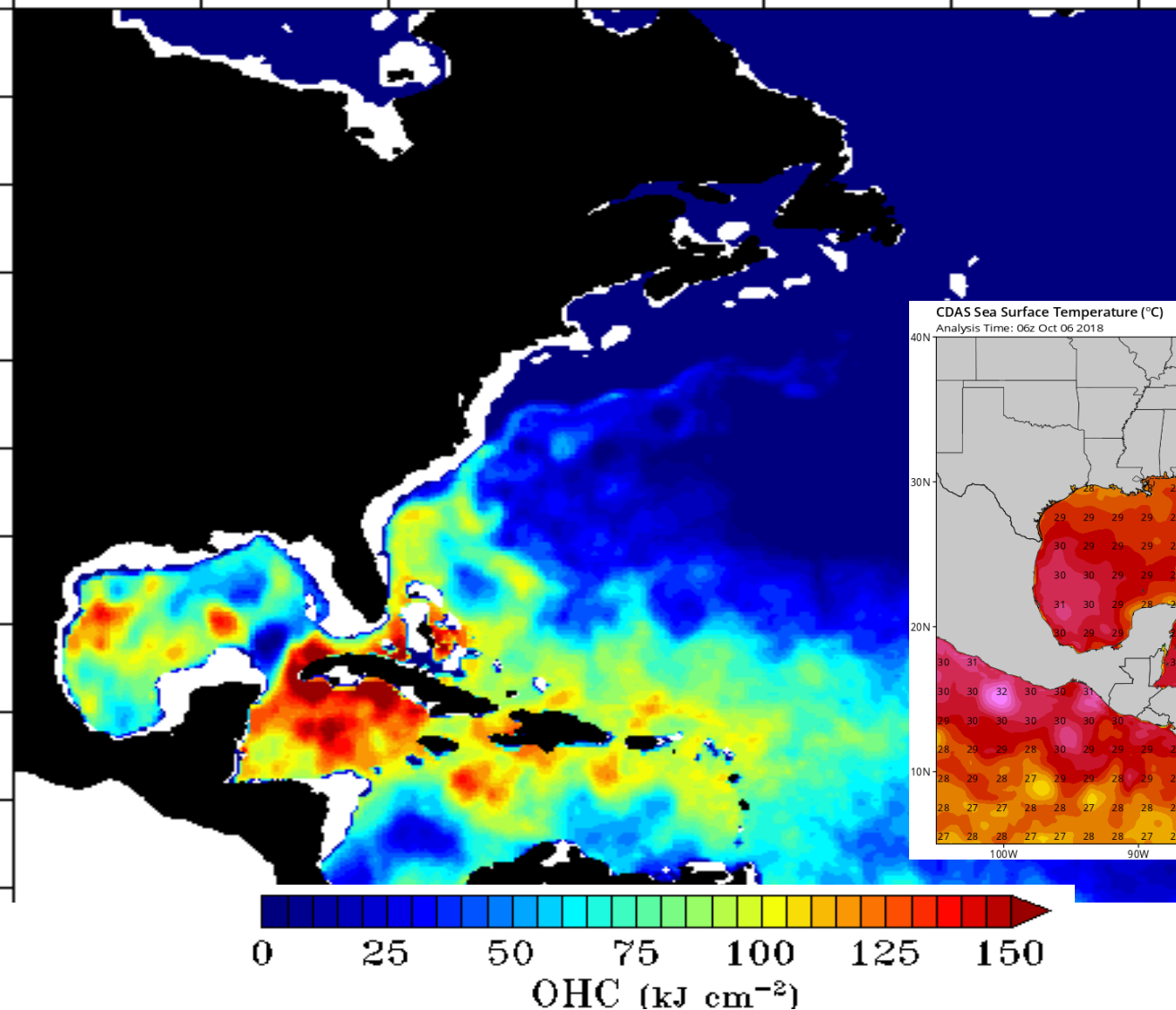
Strong wind shear in the northwestern Caribbean and Yucatan Channel will prohibit any rapid development over the next day or two. Wind shear may relax a bit in the Gulf of Mexico until a cold front approaches middle of next week.



Current Sea Temperatures and Ocean Heat Content

Ocean Heat Content: 10/06/2018

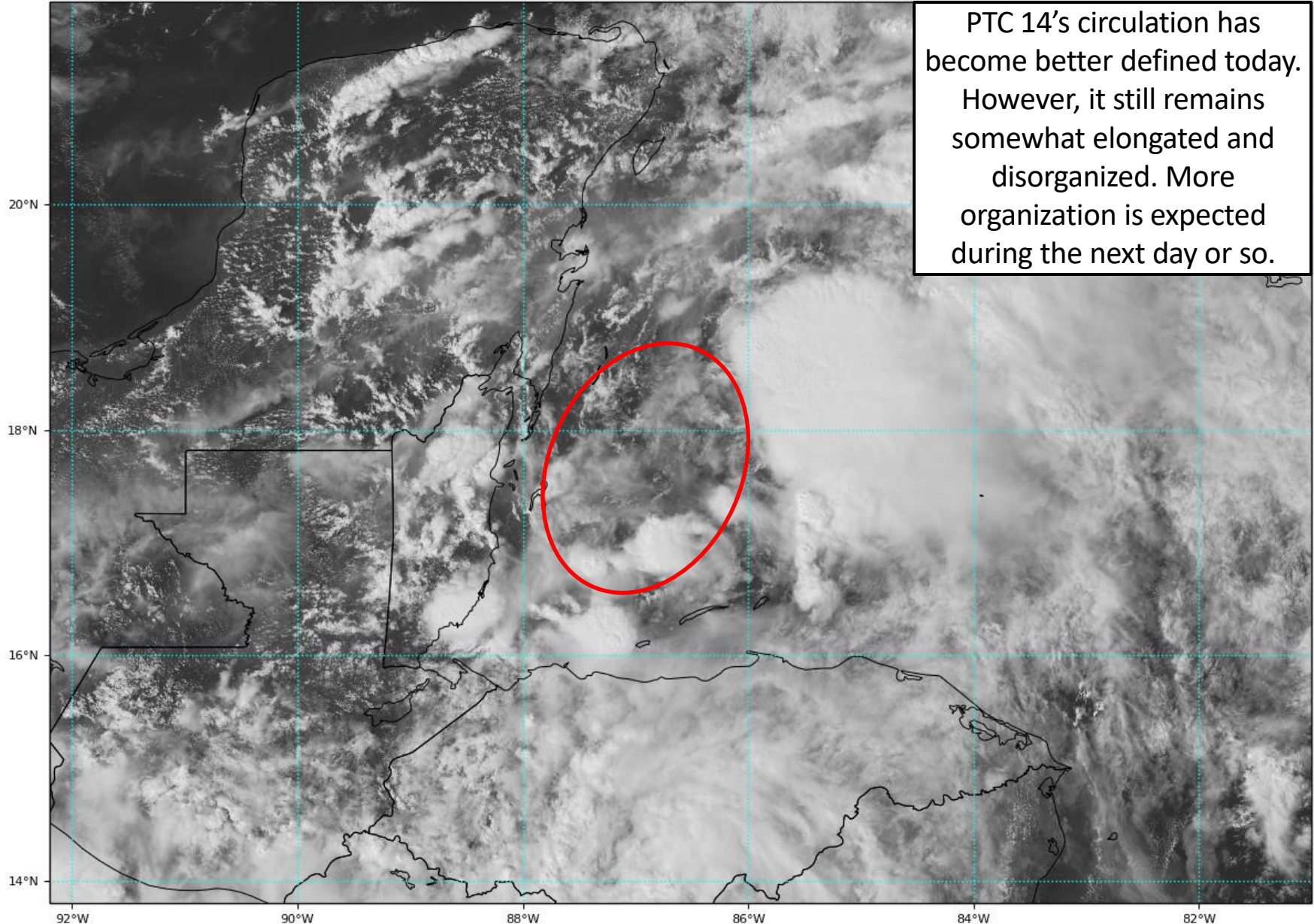
Ocean temperatures and the depth of warm water (heat content) is sufficient for development in the Caribbean and central Gulf.

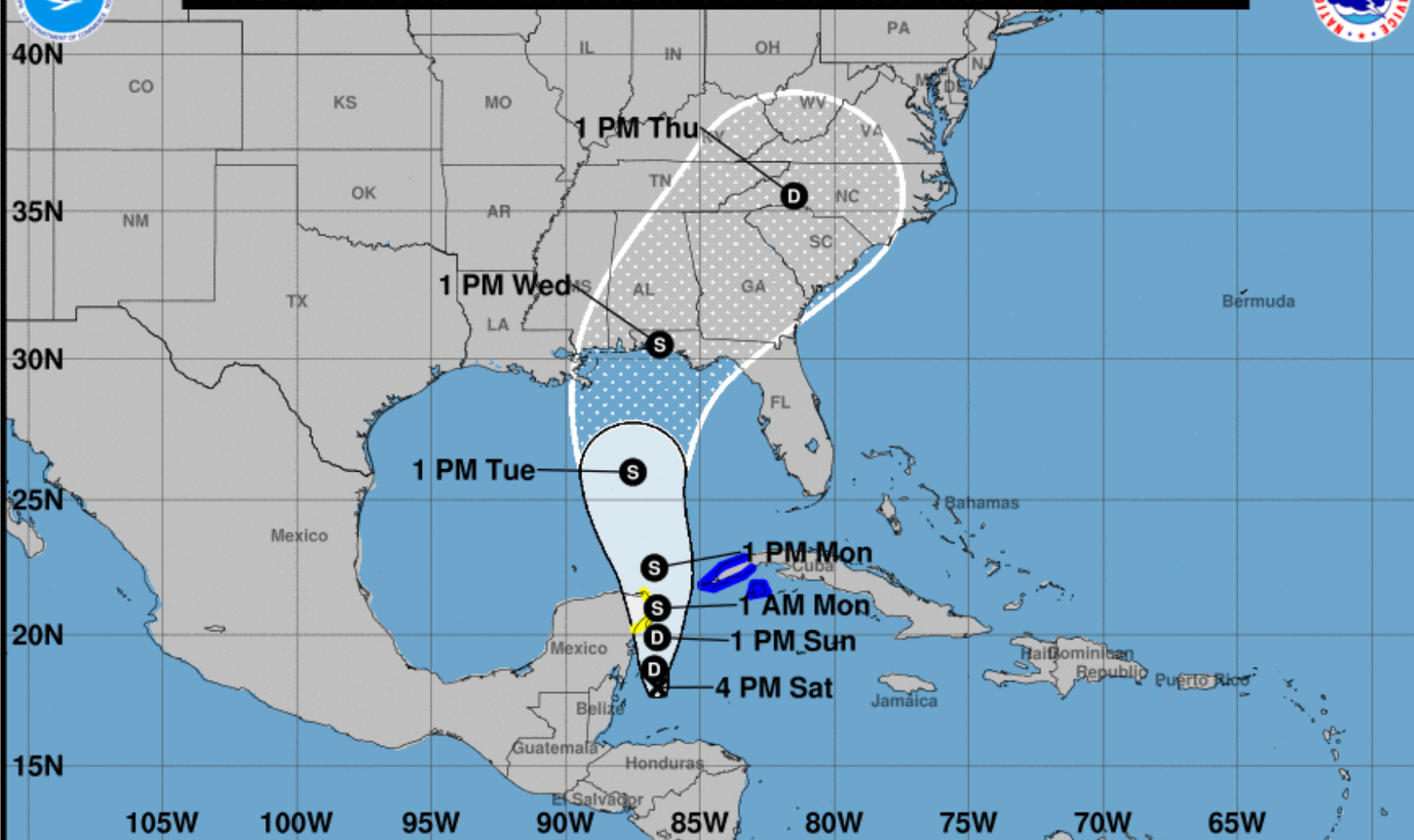
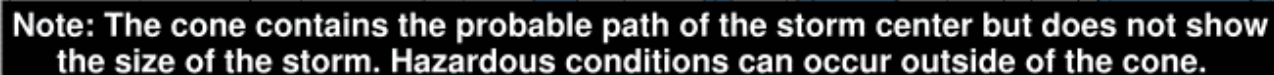


Potential Tropical Cyclone #14 Satellite Image

GOES-16 Channel 2 (visible) Reflectance at 19:35Z Oct 06, 2018

TROPICALTIDBITS.COM





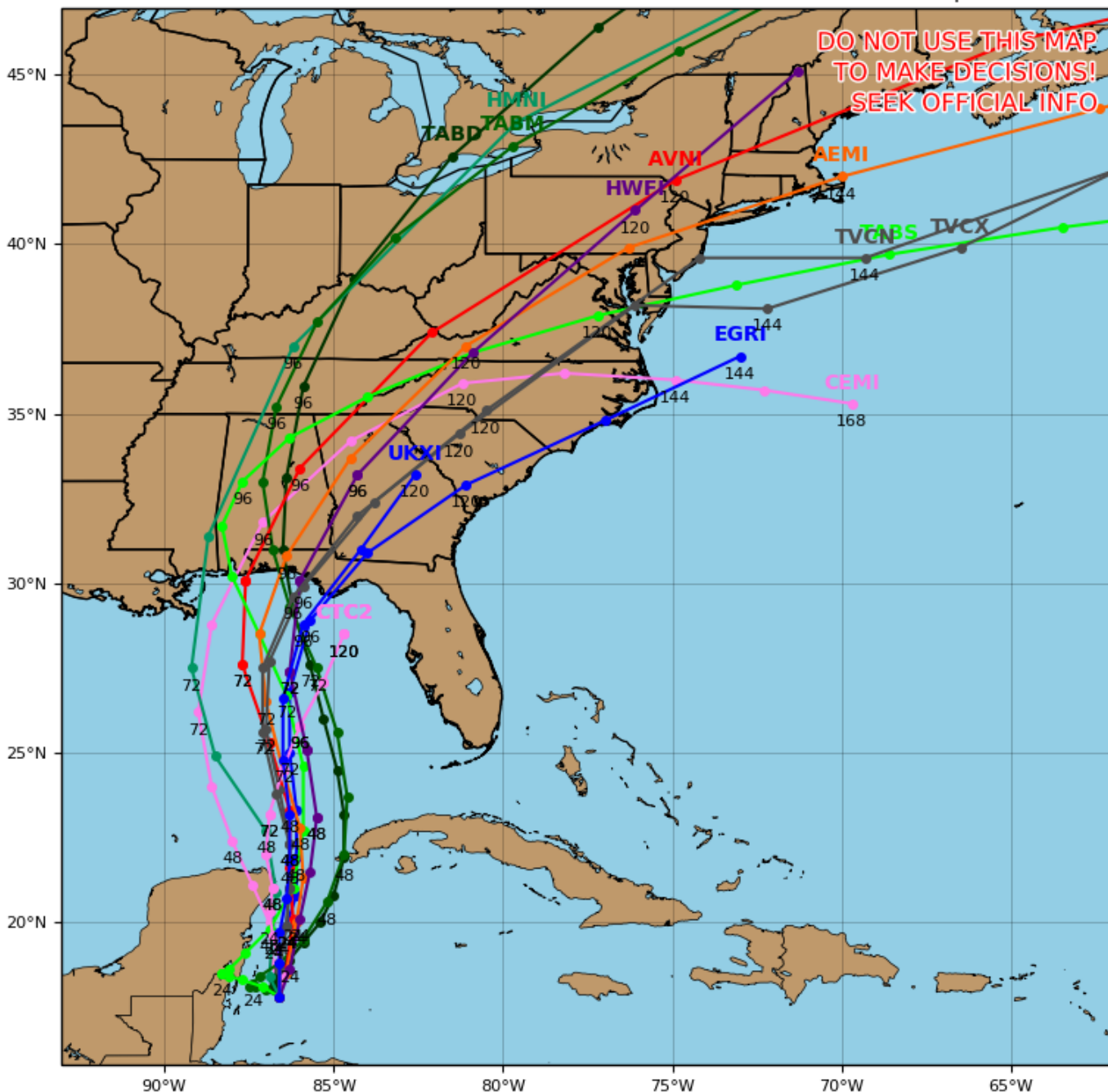
● Tropical Cyclone ○ Post/Potential TC
 Sustained winds: D < 39 mph
 S 39-73 mph H 74-110 mph M > 110 mph

■ Hurricane ■ Trop Stm

Invest 91L Model Track Guidance

Initialized at 18z Oct 06 2018

Levi Cowan - tropicaltidbits.com

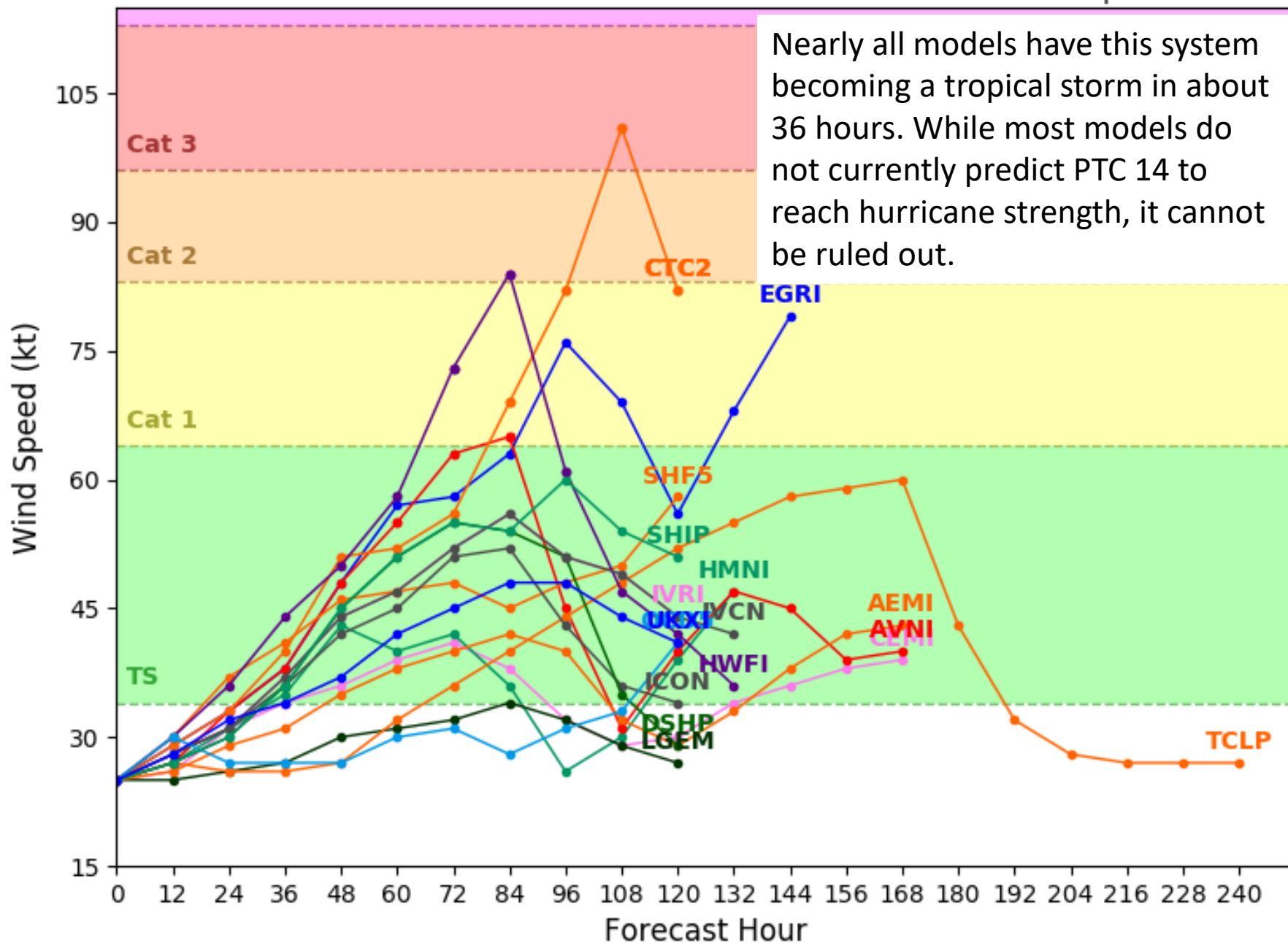


Current Model Tracks

PTC 14 will only slowly move northward over the next 24 hours. In 48 hours, PTC 14 will likely emerge into the southern Gulf of Mexico and approach the northern Gulf Coast Wednesday. There continues to be a decent amount of spread in the models, so exact landfall location cannot be determined.

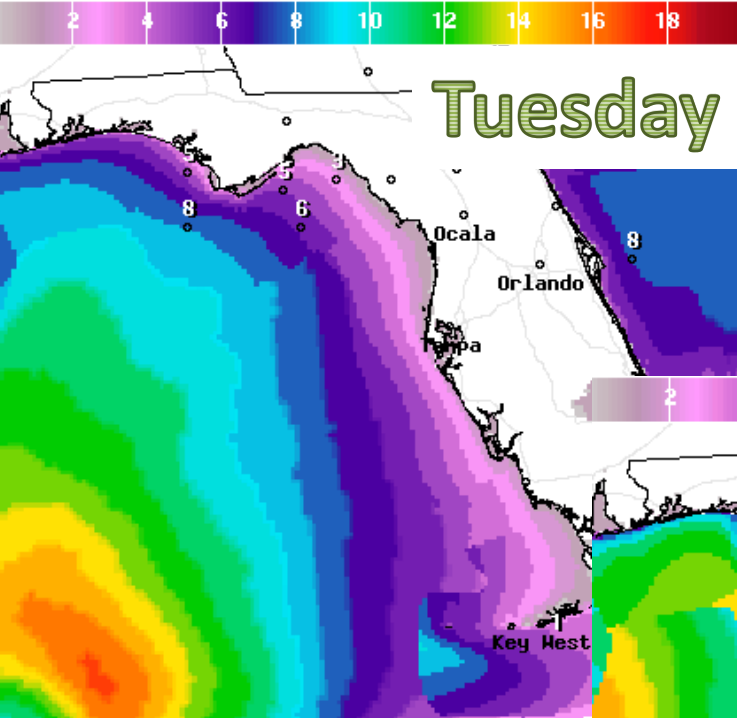
Initialized at 18z Oct 06 2018

Nearly all models have this system becoming a tropical storm in about 36 hours. While most models do not currently predict PTC 14 to reach hurricane strength, it cannot be ruled out.



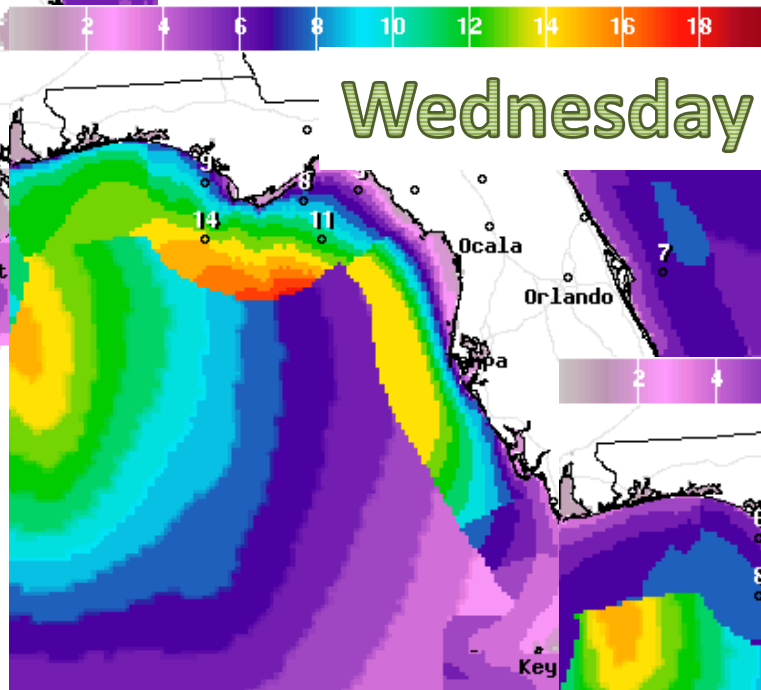


Tuesday

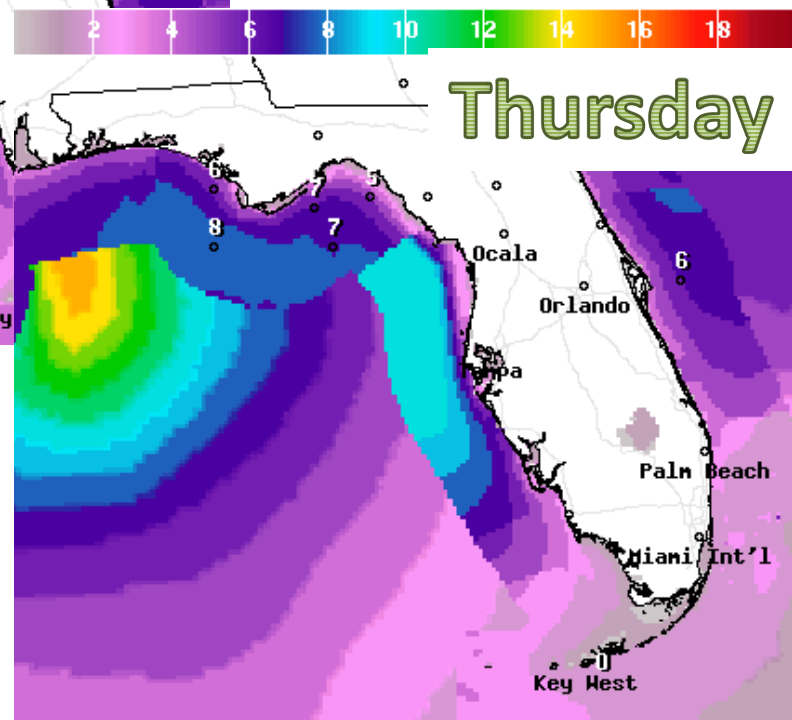


Forecast Wave Heights

Wednesday



Thursday



Regardless of PTC 14's forecast track, ocean swells will increase the rip current threat along the Panhandle coast and West Coast next week. Any coastal flooding potential will depend on the intensity of the system.

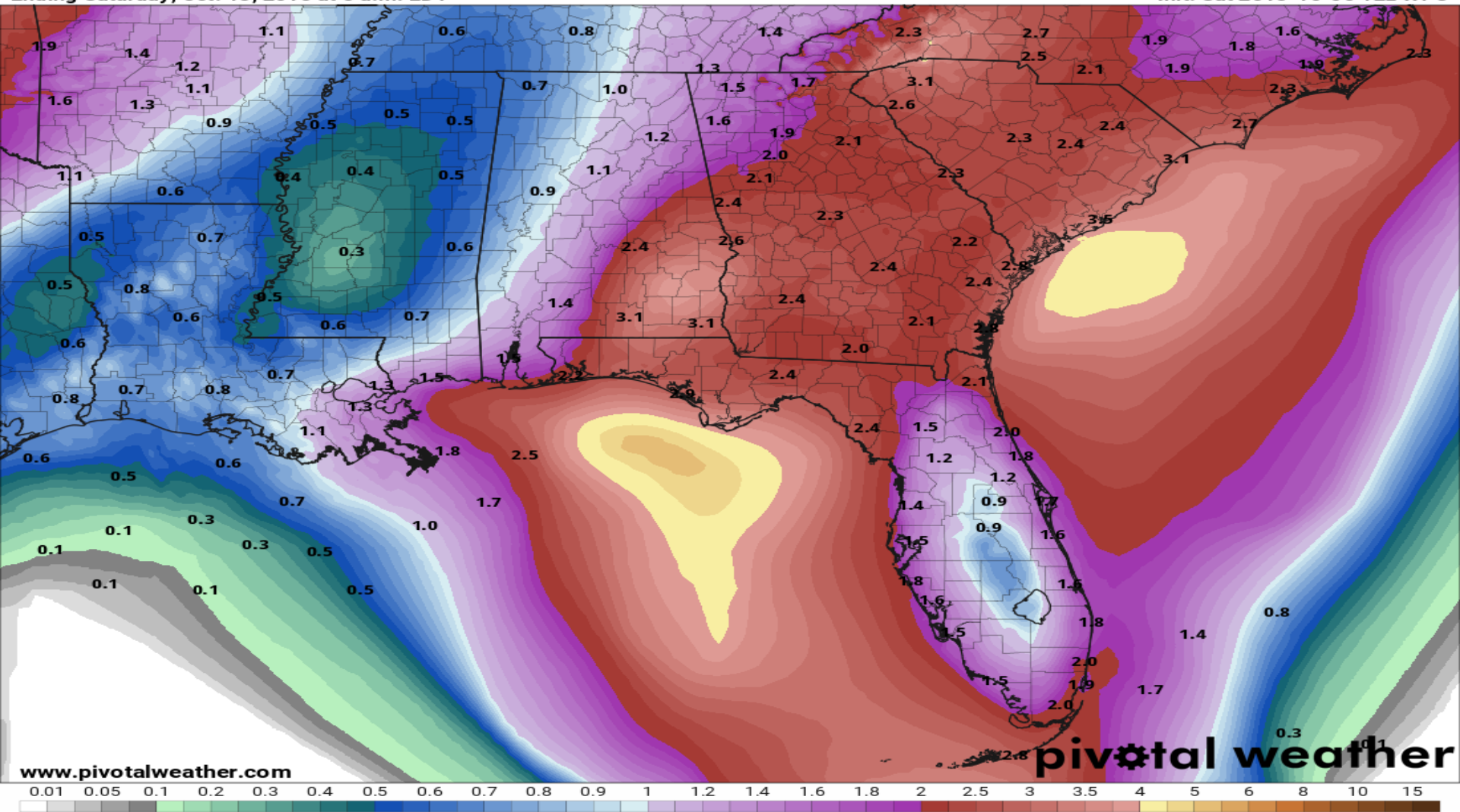
Forecast Cumulative Rain Totals – Next 7 Days

Actual rain totals will be dependent on the strength and forward speed of PTC 14 and does not account for isolated higher totals. However, most rainfall will be on the east side of its eventual track.

7-Day Precipitation (in)

Ending Saturday, Oct. 13, 2018 at 8 a.m. EDT

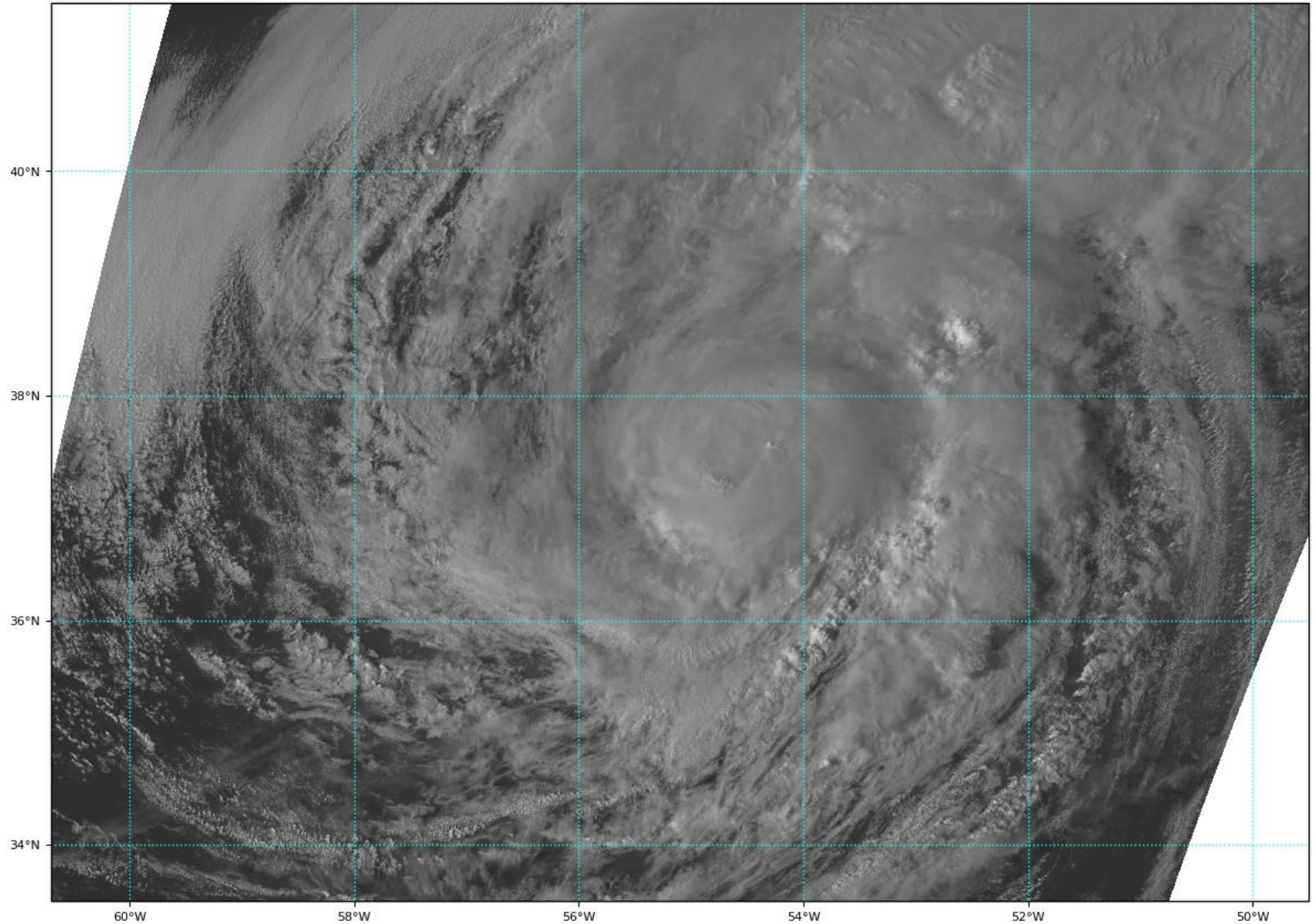
Init: Sat 2018-10-06 12z WPC



Tropical Storm Leslie Satellite Image

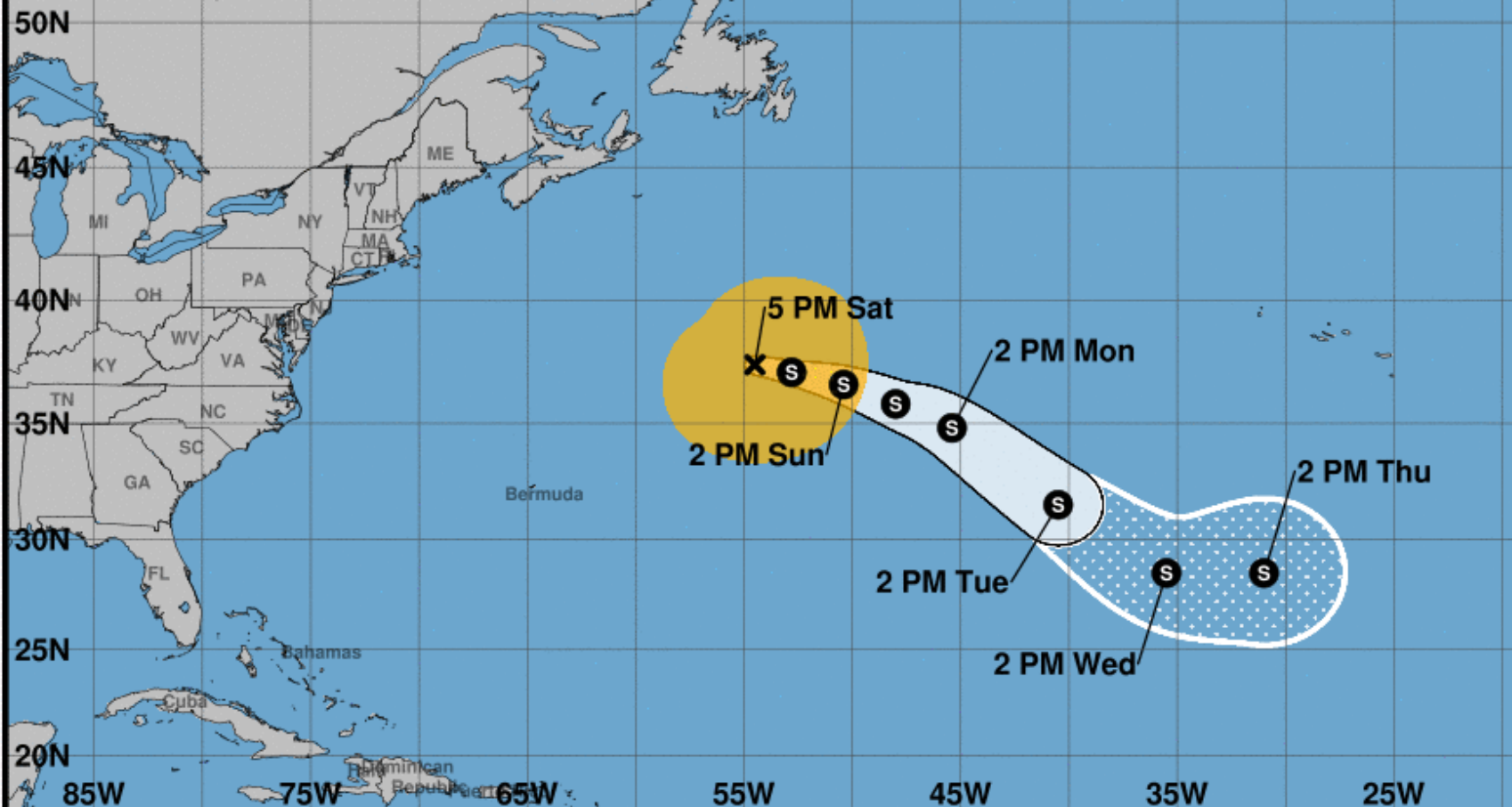
GOES-16 Channel 2 (visible) Reflectance at 19:35Z Oct 06, 2018

TROPICALTIDBITS.COM





Note: The cone contains the probable path of the storm center but does not show the size of the storm. Hazardous conditions can occur outside of the cone.



Tropical Storm Leslie

Saturday October 06, 2018

5 PM AST Advisory 42

NWS National Hurricane Center

Current information: x

Center location 37.4 N 54.5 W

Maximum sustained wind 60 mph

Movement E at 12 mph

Forecast positions:

● Tropical Cyclone ○ Post/Potential TC

Sustained winds: D < 39 mph

S 39-73 mph H 74-110 mph M > 110 mph

Potential track area:

Day 1-3 Day 4-5

Watches:

Hurricane Trop Stm

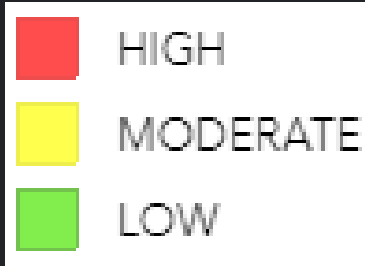
Warnings:

Hurricane Trop Stm

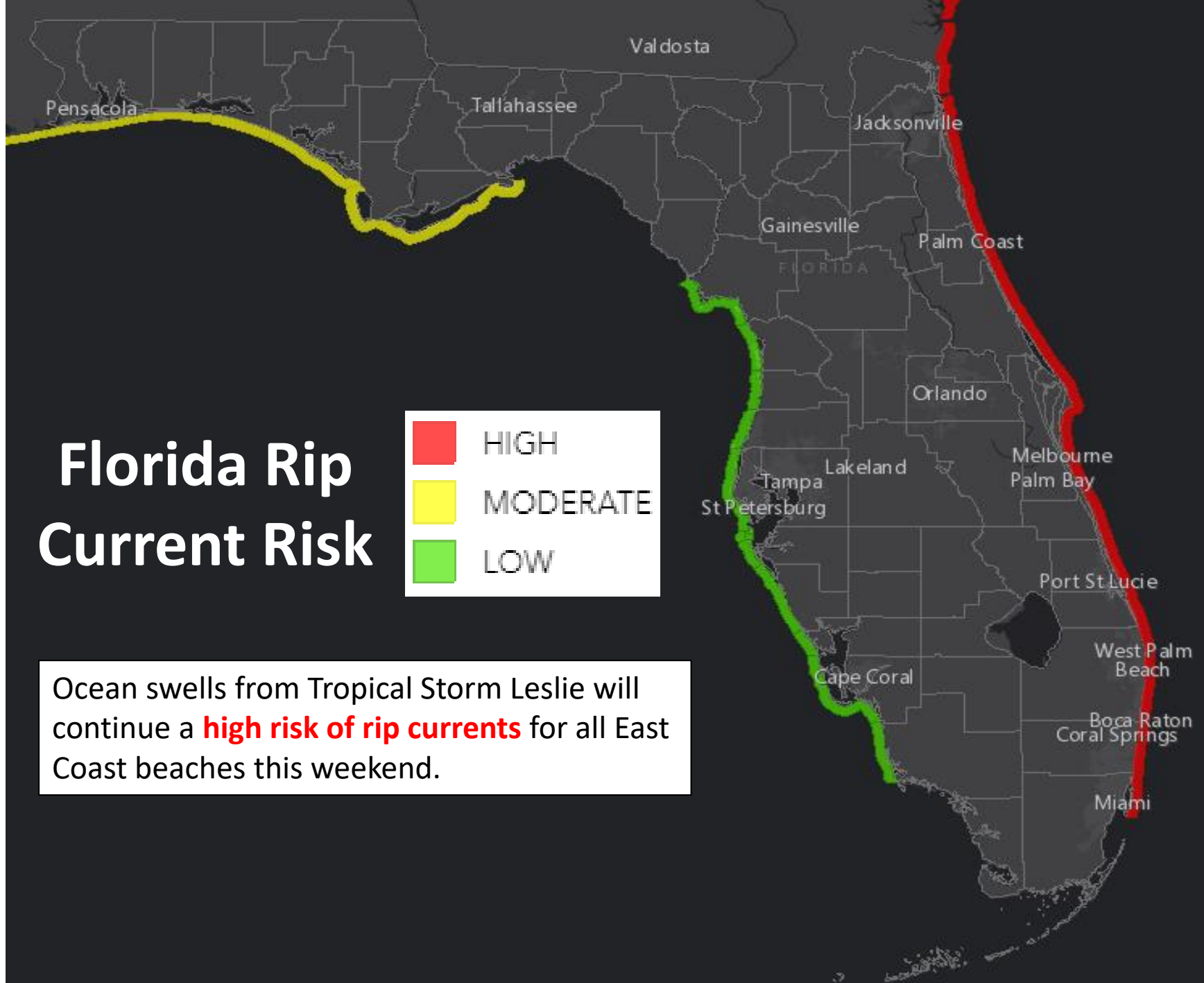
Current wind extent:

Hurricane Trop Stm

Florida Rip Current Risk



Ocean swells from Tropical Storm Leslie will continue a **high risk of rip currents** for all East Coast beaches this weekend.



Summary

Tropical Storm Leslie:

- At 5 PM EDT Saturday, Tropical Storm Leslie was located about 680 miles northeast of Bermuda.
- Maximum sustained winds are near 60 mph, and fluctuations in intensity are expected over the next several days
- Leslie has made its eastward turn and is now moving east at 9 mph. Leslie will turn east-southeast or southeast and accelerate through the middle of next week.

Potential Tropical Cyclone #14

- At 5 PM EDT Saturday, the National Hurricane Center initiated advisories on Potential Tropical Cyclone #14, located 175 miles south of Cozumel, Mexico, or about 855 miles south of Pensacola, Florida.
- Maximum sustained winds are near 30 mph, and PTC 14 is moving northwest at 6 mph.
- The odds for full tropical development are 80% (high) in the next 48 hours, and 90% (high) over the next 5 days.
- PTC 14 is expected to become a tropical depression on Sunday and a tropical storm by Sunday night.
- Landfall somewhere along the north central or northeast Gulf Coast as a strong tropical storm is expected on Wednesday. Category 1 hurricane intensity cannot be ruled out.
- The next name on the list is “Michael.”

Florida Outlook:

- Tropical Storm Leslie continues producing a large area of long-period swells that will impact the East Coast of Florida for the next few days, resulting in a high risk of rip currents along all Atlantic beaches.
- An increase in swells and rip current risks from PTC 14 will be possible along the Florida Panhandle and West Coast next week.
- Rain will be focused on the east side of PTC 14’s track, and some locally heavy rainfall is possible for the Panhandle and parts of the West Coast depending on where PTC 14 ultimately heads.
- However, it remains too early to talk about specifics regarding what, if any, wind impacts or storm surge impacts there will be for Florida.

Another briefing packet will be issued Sunday morning. For the latest information on the tropics, please visit the National Hurricane Center website at www.hurricanes.gov.



TROPICAL UPDATE

Created by:

Cameron Young, Assistant State Meteorologist

Cameron.Young@em.myflorida.com

State Meteorological Support Unit

Florida Division of Emergency
Management

Users wishing to subscribe (approval pending) to this distribution list, register at https://public.govdelivery.com/accounts/FLDEM/subscriber/new?topic_id=SERT_Met_Tropics.

Other reports available for subscription are available at

<https://public.govdelivery.com/accounts/FLDEM/subscriber/new?preferences=true>