



# **TROPICAL UPDATE**

**5 PM EDT**

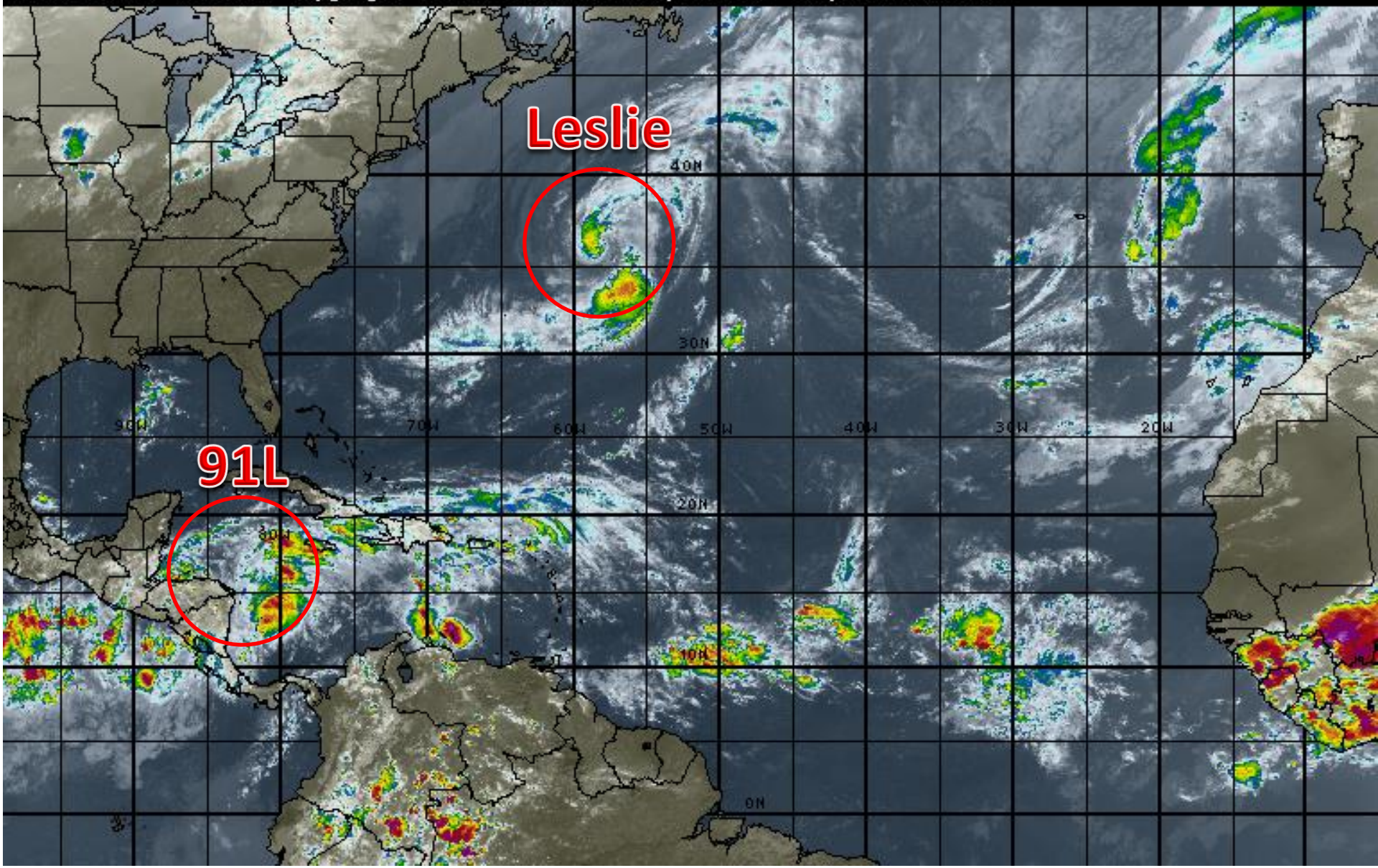
**Friday, October 5, 2018**

**Tropical Storm Leslie, Invest 91L (70%)**

**This update is intended for government and emergency response officials, and is provided for informational and situational awareness purposes only. Forecast conditions are subject to change based on a variety of environmental factors. For additional information, or for any life safety concerns with an active weather event please contact your County Emergency Management or Public Safety Office, local National Weather Service forecast office or visit the National Hurricane Center website at [www.nhc.noaa.gov](http://www.nhc.noaa.gov).**

# Atlantic Basin Satellite Image

18:00 05-OCT-2018 GMT Copyright © 1998-2018 WSI Corporation <http://www.wsi.com>





# Five-Day Graphical Tropical Weather Outlook

National Hurricane Center Miami, Florida



www.hurricanes.gov

All Disturbances

LESLIE



1. A broad area of low pressure centered near the northeastern coast of Honduras is drifting northwestward and producing disorganized shower and thunderstorm activity from Central America east-northeastward across the Western Caribbean to Hispaniola. Although strong winds aloft persist just to the north of the system, the upper-level environment is expected to be conducive enough to allow slow development. A tropical depression could form by late this weekend or early next week over the northwestern Caribbean Sea or Gulf of Mexico while the system moves northwestward to northward.

\* Formation chance through 48 hours...**medium...40 percent.**

\* Formation chance through 5 days...**high...70 percent.**

2:00 pm EDT  
Fri Oct 5 2018

100W

90W

80W

70W

60W

50W

40W

30W

20W

Current Disturbances and Five-Day Cyclone Formation Chance: < 40% 40-60% > 60%

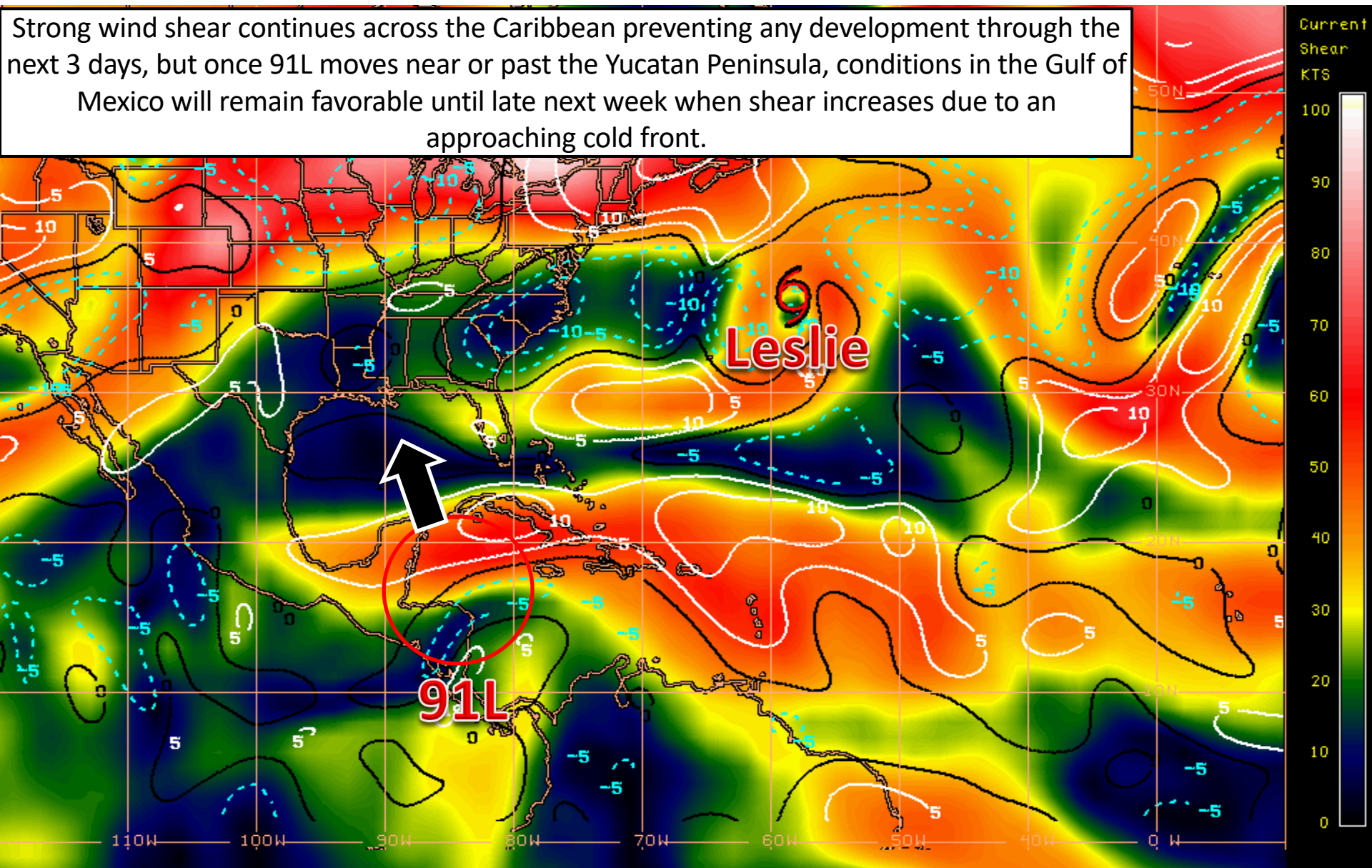
Tropical or Sub-Tropical Cyclone: Depression Storm Hurricane

Post-Tropical Cyclone or Remnants



# Wind Shear (shaded) and Wind Shear Tendencies (contoured)

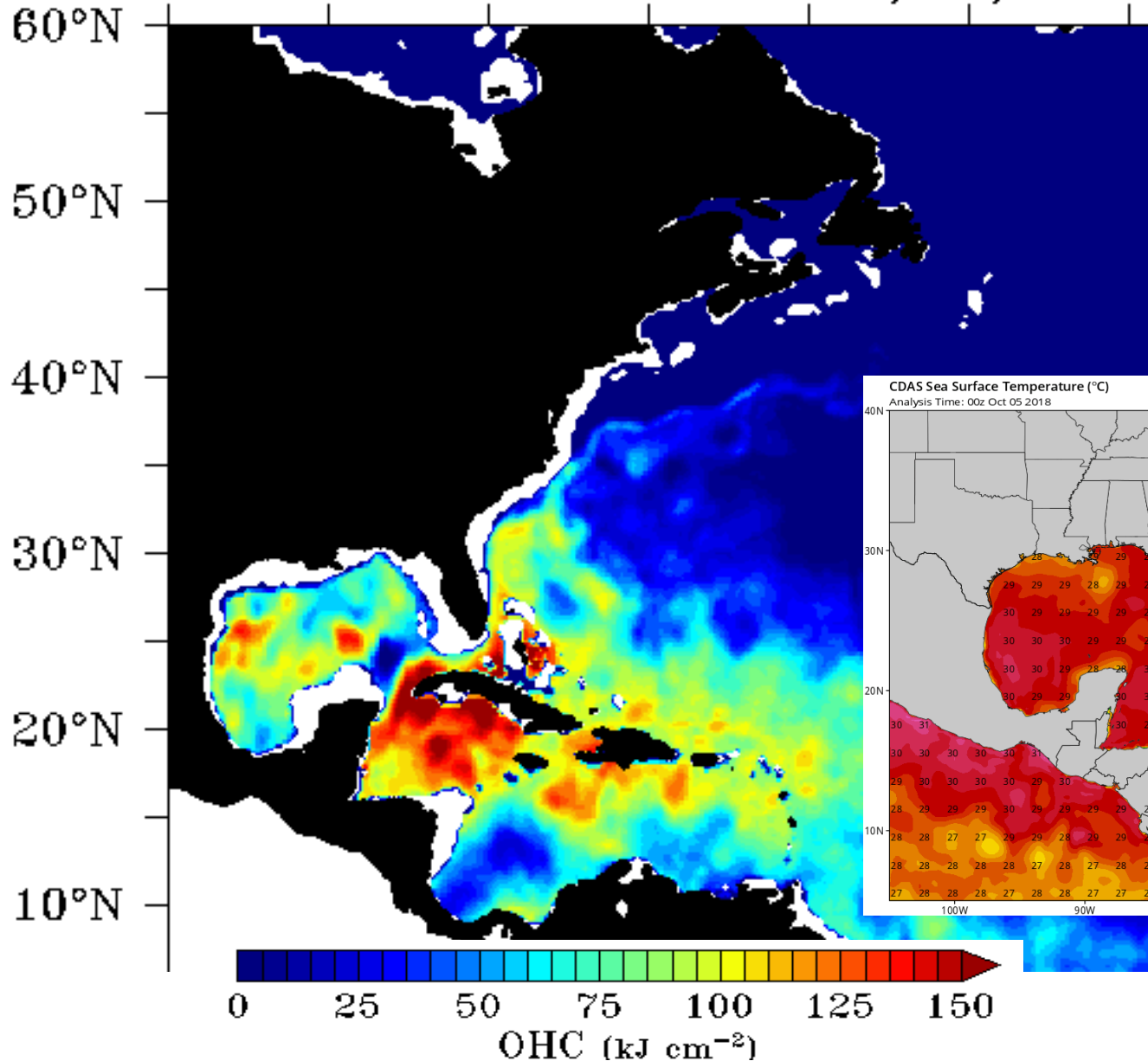
Strong wind shear continues across the Caribbean preventing any development through the next 3 days, but once 91L moves near or past the Yucatan Peninsula, conditions in the Gulf of Mexico will remain favorable until late next week when shear increases due to an approaching cold front.



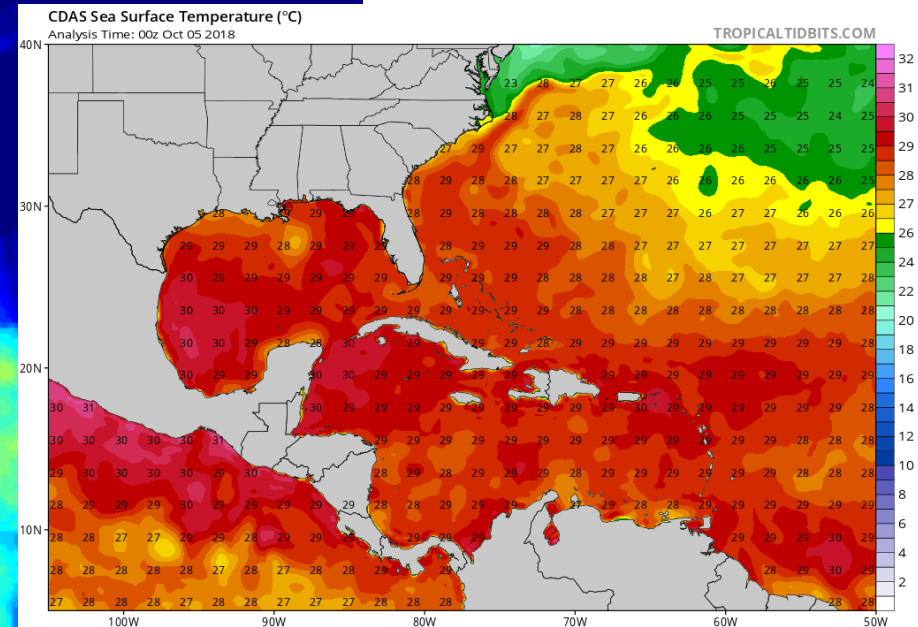
Shear Tendency (KTS) Over Past 24 Hours: Increasing — Decreasing ----

# Current Sea Temperatures

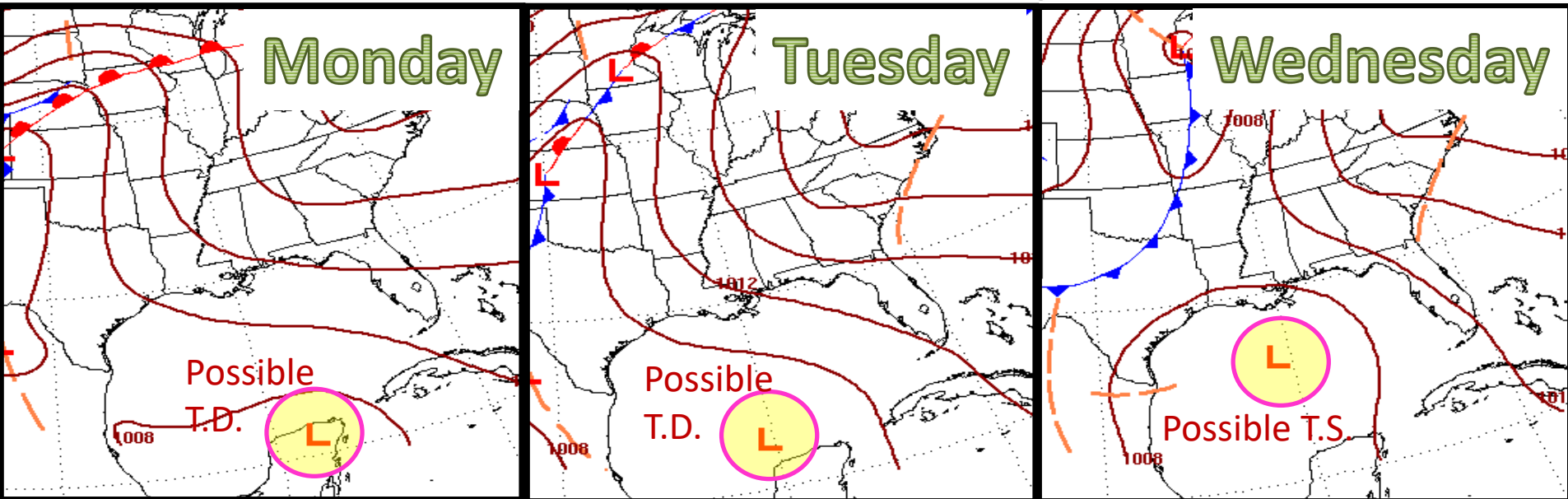
Ocean Heat Content: 10/05/2018



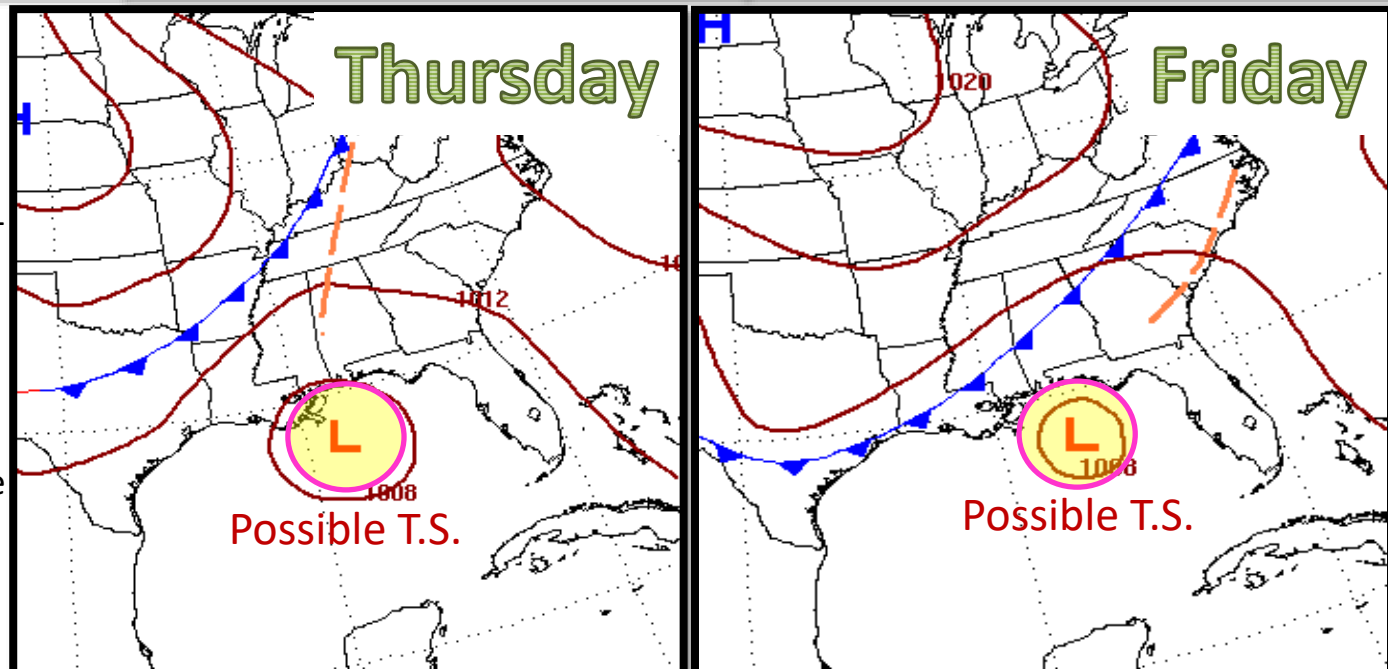
Ocean temperatures and the depth of warm water (heat content) is sufficient for development in the Caribbean and central Gulf.



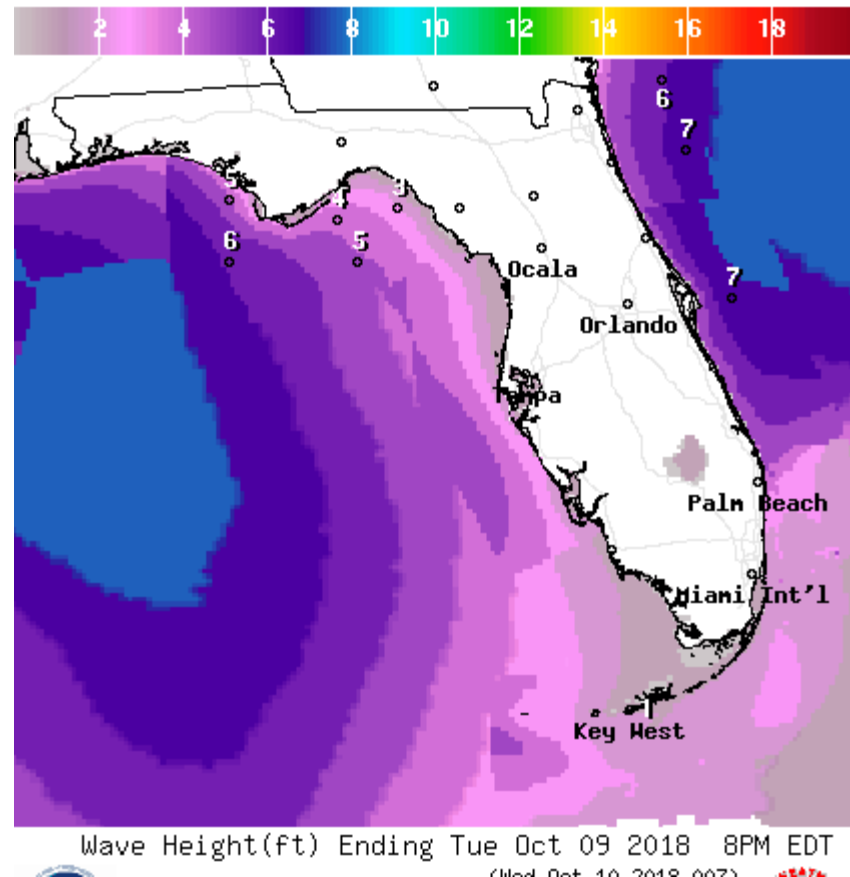
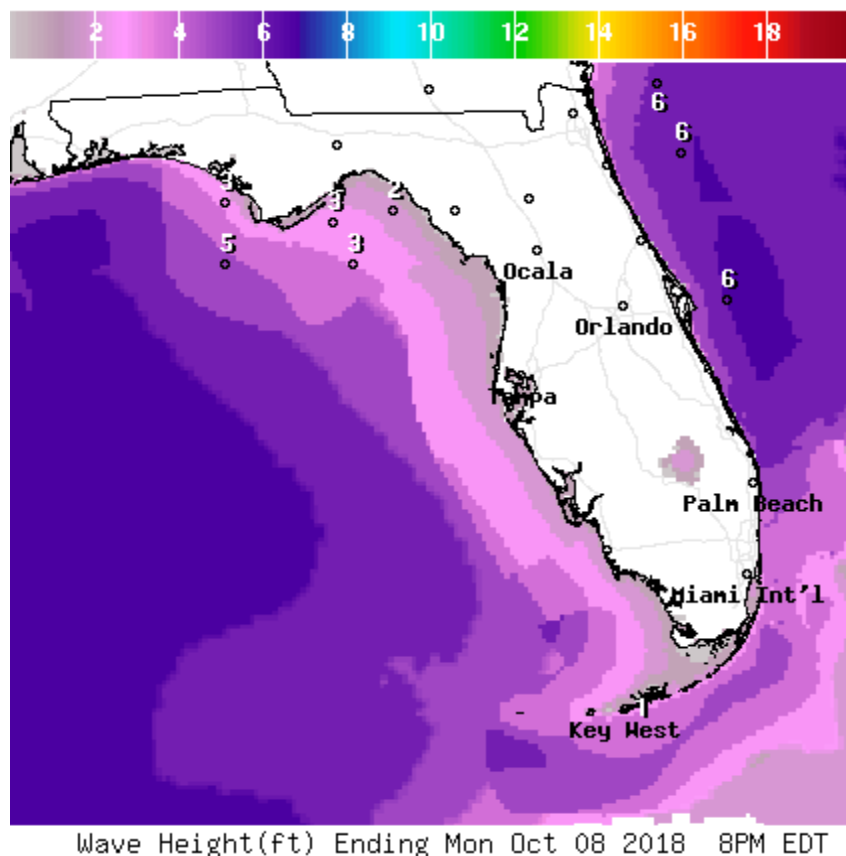
# Forecast Weather Map (fronts)



Invest 91L will move toward the southern Gulf of Mexico early next week. The eventual track of whatever becomes of 91L will depend on the speed of both 91L and the cold front that will be moving through the Southeast U.S. Uncertainty remains high at this time, especially once 91L emerges into the Gulf. Do not focus on the exact position of the low in these images as this will continue to change with the latest model guidance.



# Forecast Wave Heights – Monday & Tuesday



Regardless of track, ocean swells will increase the rip current threat along the Panhandle coast next week. Any coastal flooding potential will depend on the intensity of the system.

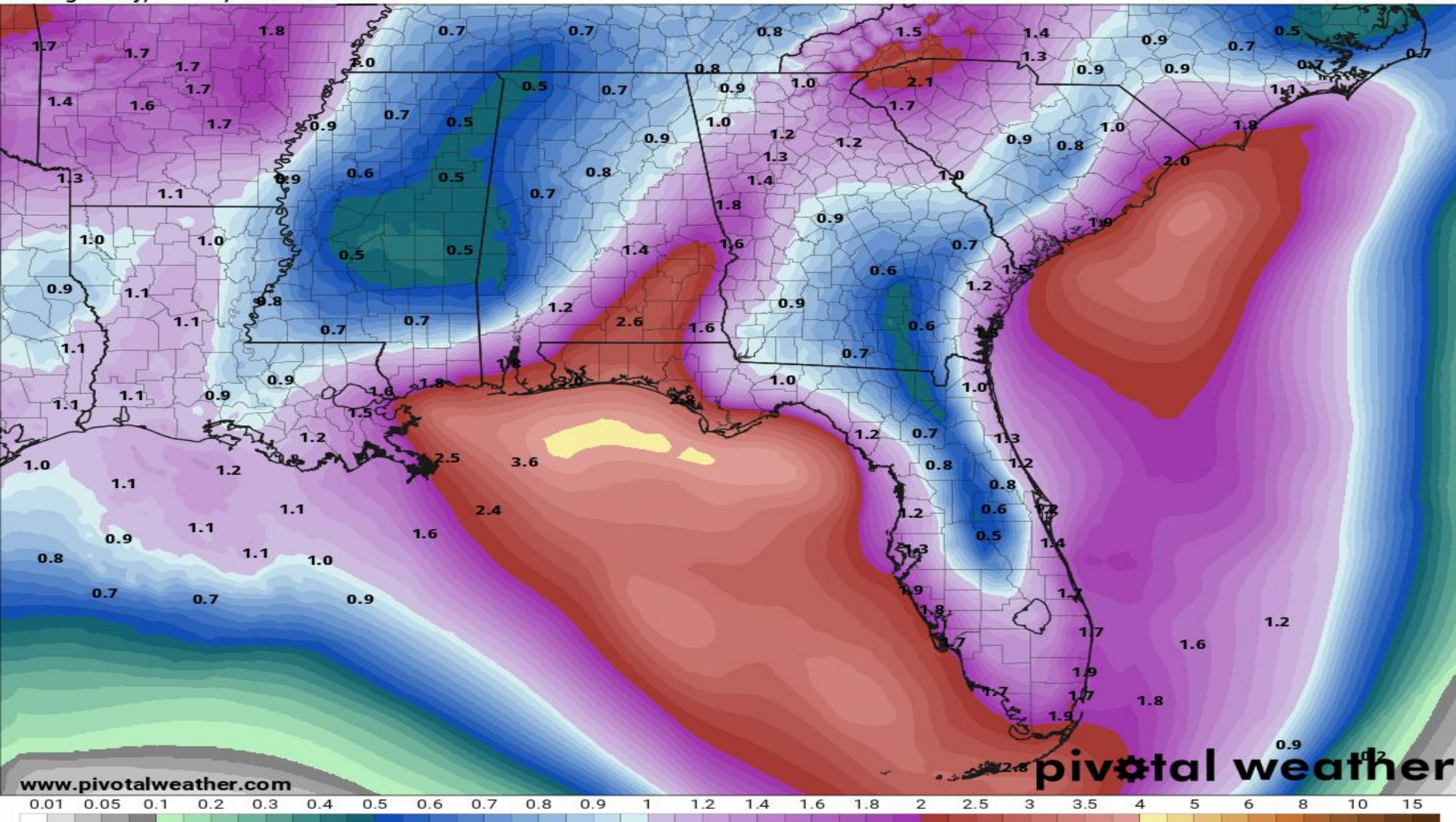


# Forecast Cumulative Rain Totals – Next 7 Days

Actual rain totals will be dependent on the strength and forward speed of the system and does not account for isolated higher totals.

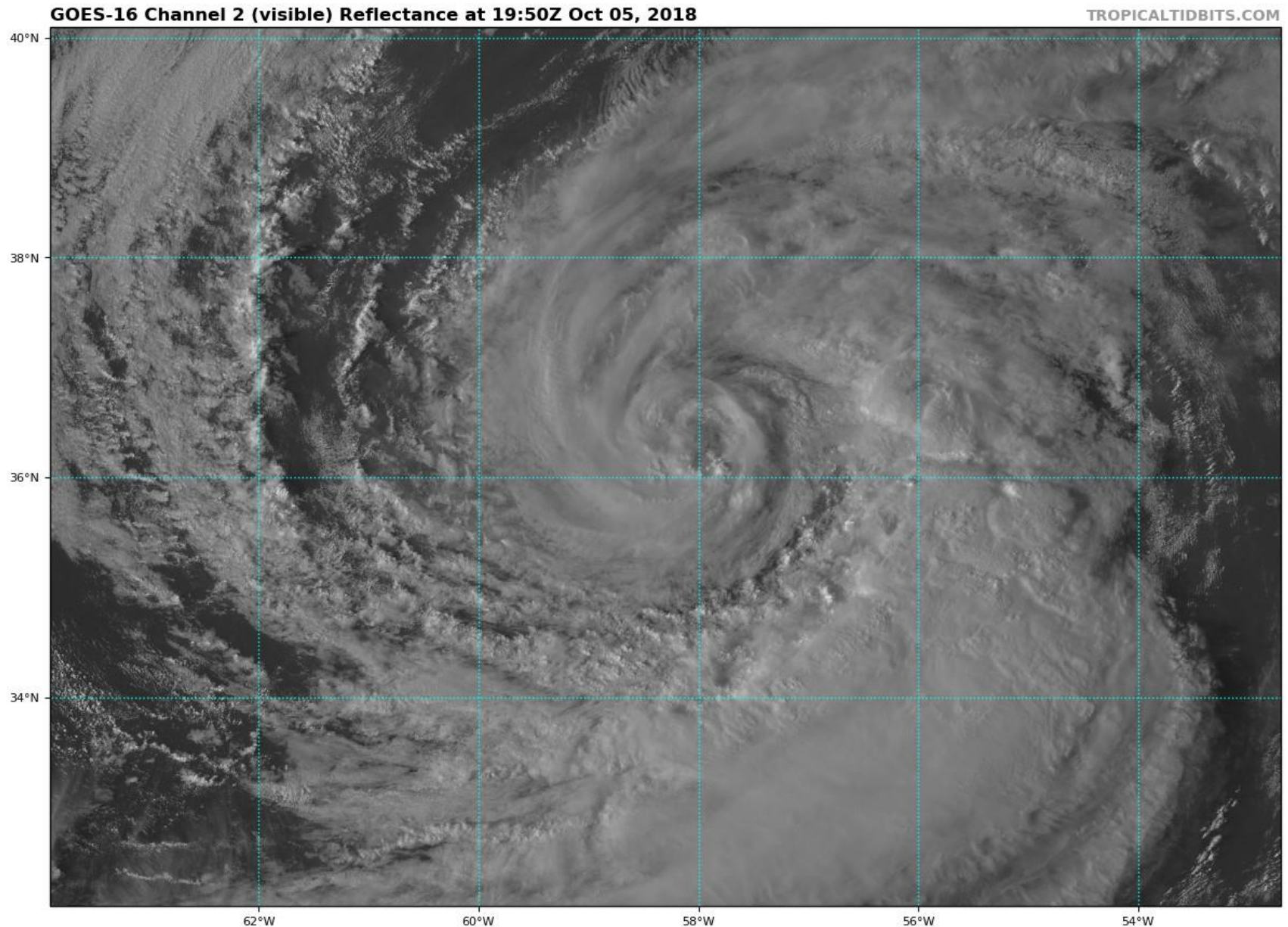
**7-Day Precipitation (in)**  
Ending Friday, Oct. 12, 2018 at 8 a.m. EDT

Init: Fri 2018-10-05 12z WPC



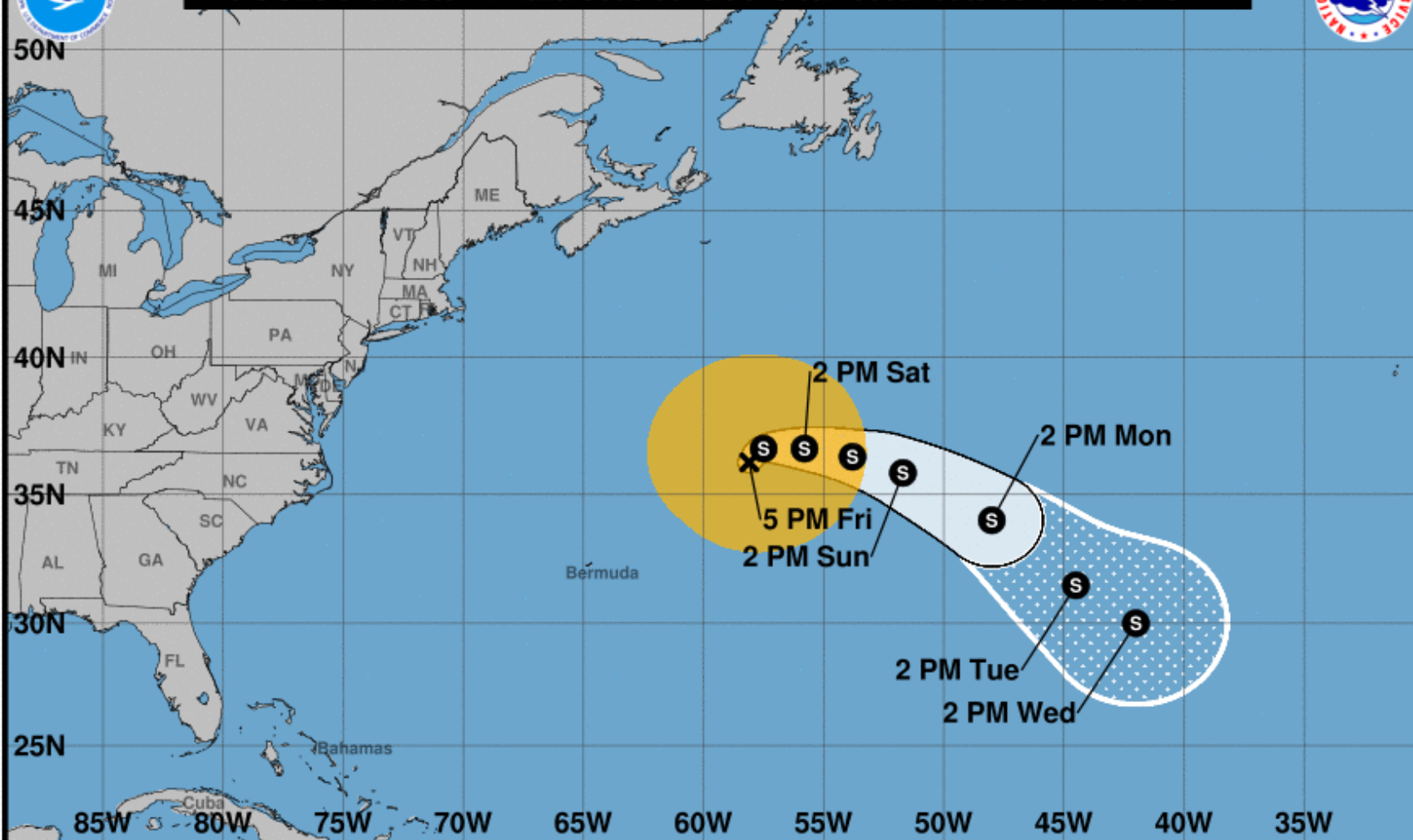


# Tropical Storm Leslie Satellite Image





Note: The cone contains the probable path of the storm center but does not show the size of the storm. Hazardous conditions can occur outside of the cone.



### Tropical Storm Leslie

Friday October 05, 2018

5 PM AST Advisory 38

NWS National Hurricane Center

### Current information: x

Center location 36.2 N 58.1 W

Maximum sustained wind 60 mph

Movement NNE at 3 mph

### Forecast positions:

● Tropical Cyclone ○ Post/Potential TC

Sustained winds: D < 39 mph

S 39-73 mph H 74-110 mph M > 110 mph

### Potential track area:

Day 1-3 Day 4-5

### Watches:

Hurricane Trop Stm

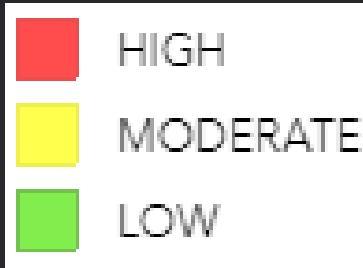
### Warnings:

Hurricane Trop Stm

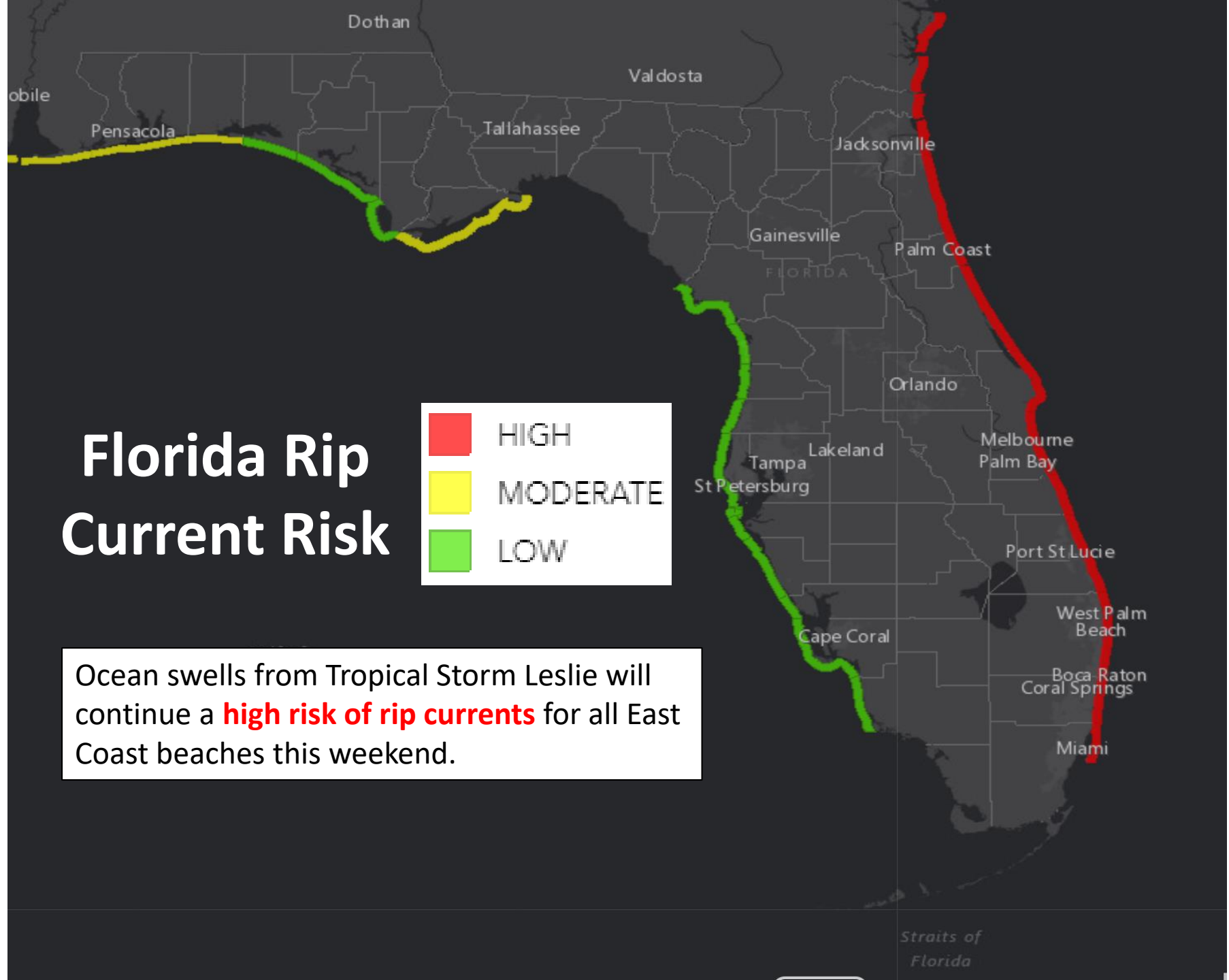
### Current wind extent:

Hurricane Trop Stm

# Florida Rip Current Risk



Ocean swells from Tropical Storm Leslie will continue a **high risk of rip currents** for all East Coast beaches this weekend.





# Summary

## **Tropical Storm Leslie:**

- At 5 PM EDT Friday, Tropical Storm Leslie was located about 465 miles northeast of Bermuda.
- Maximum sustained winds are near 60 mph, and some slight weakening is expected over the next few days.
- Leslie is moving north-northeast at 3 mph, and a sharp eastward or east-southeastward turn is expected on Saturday. A continued southeastward motion is expected through Wednesday.

## **Invest 91L**

- An area of low pressure (Invest 91L) near the Nicaragua-Honduras border is producing a disorganized area of showers and thunderstorms.
- Strong wind shear just to the north will prevent any significant development over the next 24-36 hours, but gradual organization is expected later this weekend into early next week.
- The odds for development are 40% (medium) in the next 48 hours, and 70% (high) over the next 5 days, and a tropical depression may form early next week in the northwestern Caribbean Sea or the southern Gulf of Mexico.
- Its future once it emerges into the Gulf of Mexico remains uncertain both in terms of track and intensity, especially due to its interaction with a cold front as it nears the Gulf Coast.
- The next name on the list is "Michael."

## **Florida Outlook:**

- Tropical Storm Leslie is producing a large area of long-period swells that will impact the East Coast of Florida for the next few days, resulting in a high risk of rip currents along all Atlantic beaches.
- It is still too early to determine what exact impacts can be expected to Florida from the low in the Caribbean due to uncertainty both in track and intensity.
- Regardless of development, an increase in swells and rip current risks will be possible along the Florida Panhandle Coast next week.
- Most rain impacts will likely be on the east side of the system regardless of where this low tracks, and increased rain chances are expected for at least the Florida Panhandle next week.

Another briefing packet will be issued Saturday morning. For the latest information on the tropics, please visit the National Hurricane Center website at [www.hurricanes.gov](http://www.hurricanes.gov).



# TROPICAL UPDATE

Created by:

Cameron Young, Assistant State Meteorologist

[Cameron.Young@em.myflorida.com](mailto:Cameron.Young@em.myflorida.com)

State Meteorological Support Unit

Florida Division of Emergency  
Management

Users wishing to subscribe (approval pending) to this distribution list, register at [https://public.govdelivery.com/accounts/FLDEM/subscriber/new?topic\\_id=SERT\\_Met\\_Tropics](https://public.govdelivery.com/accounts/FLDEM/subscriber/new?topic_id=SERT_Met_Tropics).

Other reports available for subscription are available at

<https://public.govdelivery.com/accounts/FLDEM/subscriber/new?preferences=true>