



TROPICAL UPDATE

9AM EDT

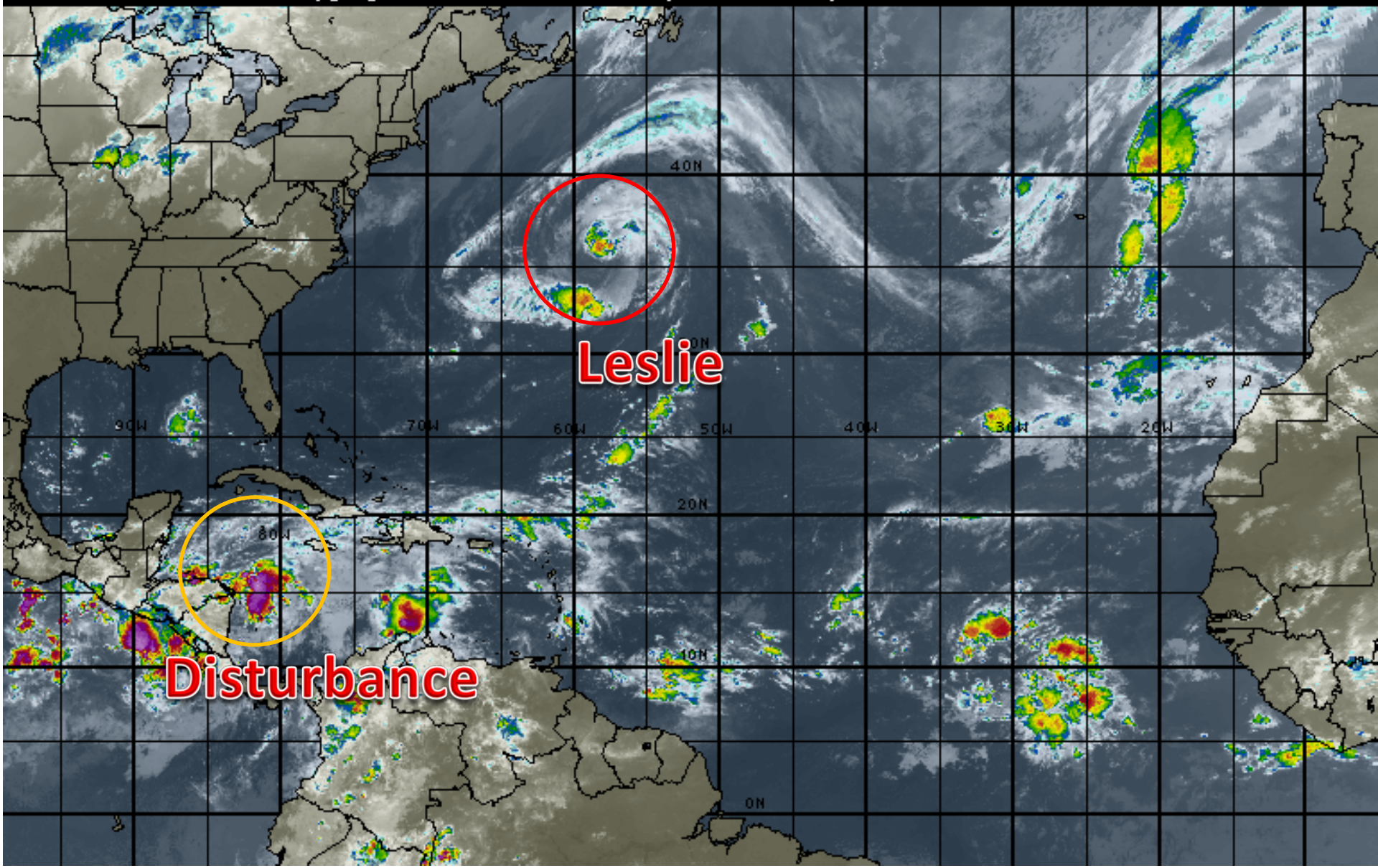
Friday, October 5, 2018

Tropical Storm Leslie, Caribbean Low (60%)

This update is intended for government and emergency response officials, and is provided for informational and situational awareness purposes only. Forecast conditions are subject to change based on a variety of environmental factors. For additional information, or for any life safety concerns with an active weather event please contact your County Emergency Management or Public Safety Office, local National Weather Service forecast office or visit the National Hurricane Center website at www.nhc.noaa.gov.

Atlantic Basin Satellite Image

09:00 05-OCT-2018 GMT Copyright © 1998-2018 WSI Corporation <http://www.wsi.com>





Five-Day Graphical Tropical Weather Outlook

National Hurricane Center Miami, Florida



www.hurricanes.gov

All Disturbances

LESLIE



1. Showers and thunderstorms associated with an area of low pressure located near Cabo Gracias a Dios on the eastern border of Honduras and Nicaragua have become more concentrated during the past several hours. Although strong winds aloft are located just to the north of this system, the upper-level environment is expected to be conducive enough to allow slow development, and a tropical depression could form by late this weekend or early next week over the northwestern Caribbean Sea or southern Gulf of Mexico while the system moves slowly northwestward. Regardless of tropical cyclone formation, this disturbance will continue to bring torrential rains primarily to portions of Central America and the Yucatan peninsula during the next few days.

* Formation chance through 48 hours...low...30 percent.

* Formation chance through 5 days...medium...60 percent.

8:00 am EDT
Fri Oct 5 2018

100W

90W

80W

70W

60W

50W

40W

30W

20W

5N

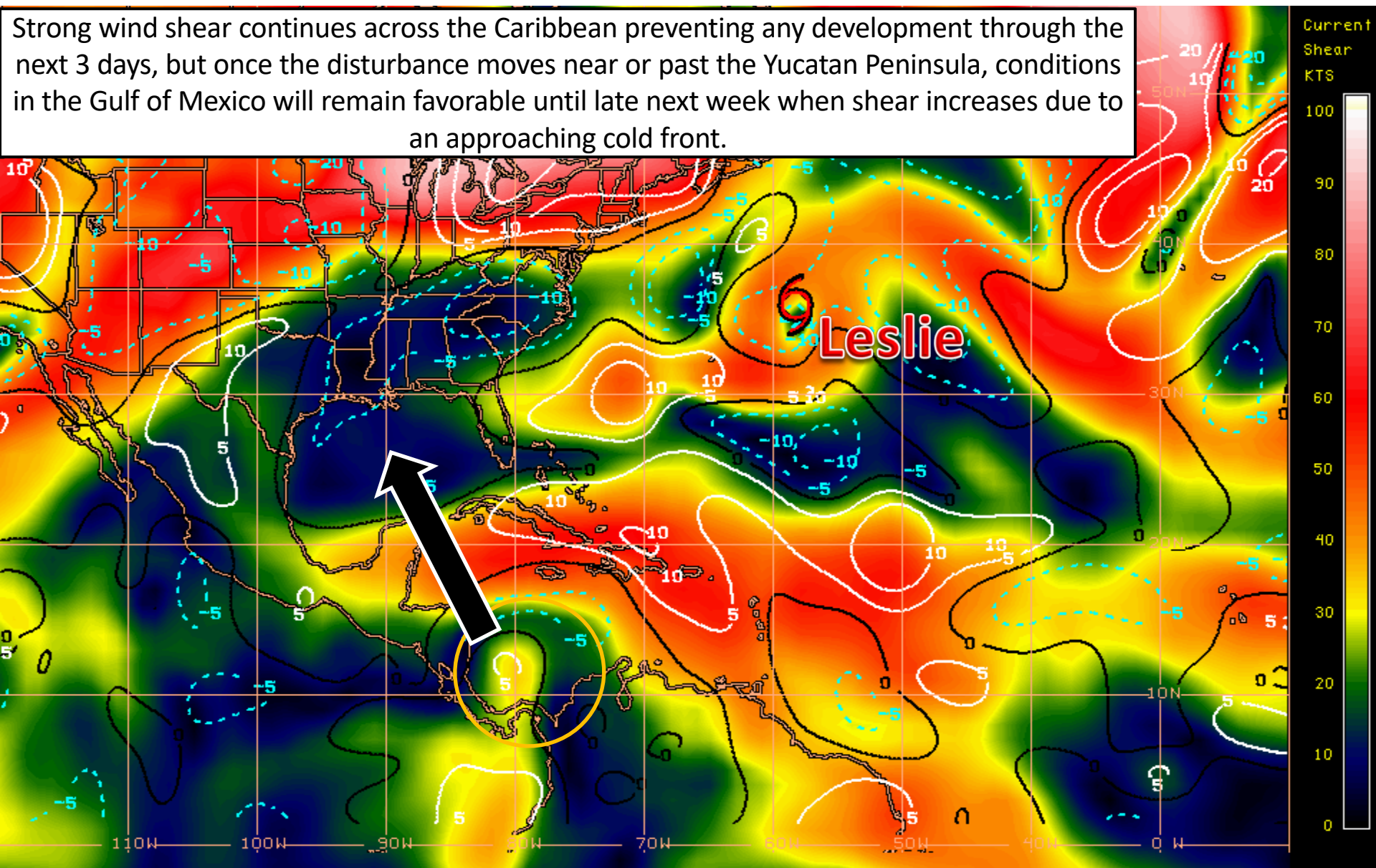
Current Disturbances and Five-Day Cyclone Formation Chance: < 40% 40-60% > 60%

Tropical or Sub-Tropical Cyclone: Depression Storm Hurricane

Post-Tropical Cyclone or Remnants

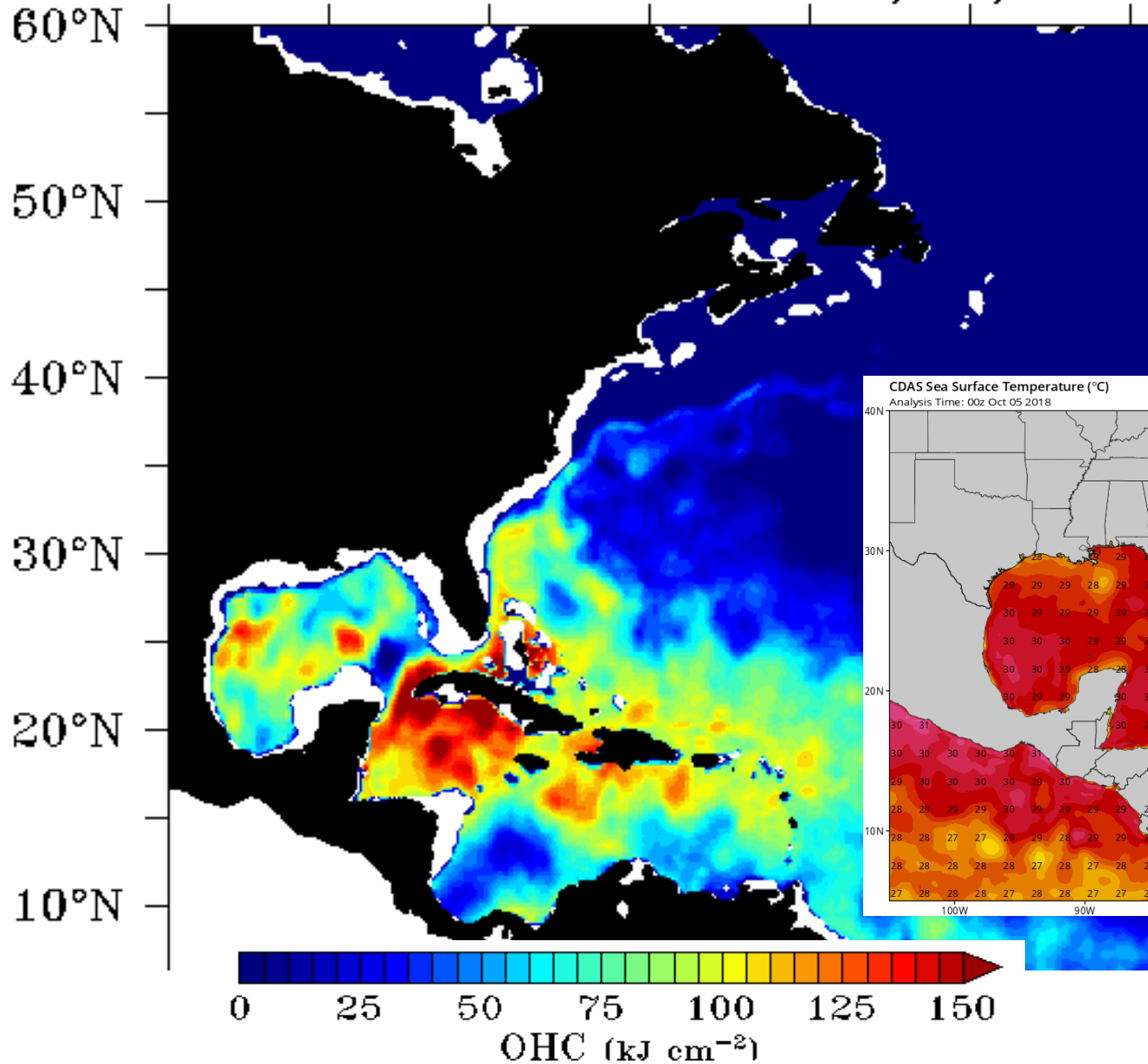
Wind Shear (shaded) and Wind Shear Tendencies (contoured)

Strong wind shear continues across the Caribbean preventing any development through the next 3 days, but once the disturbance moves near or past the Yucatan Peninsula, conditions in the Gulf of Mexico will remain favorable until late next week when shear increases due to an approaching cold front.

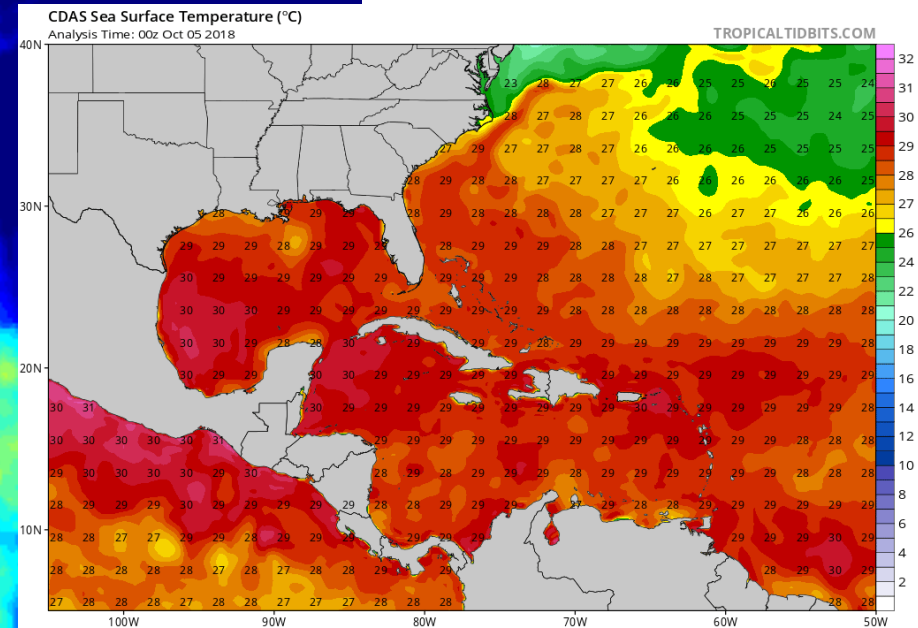


Current Sea Temperatures

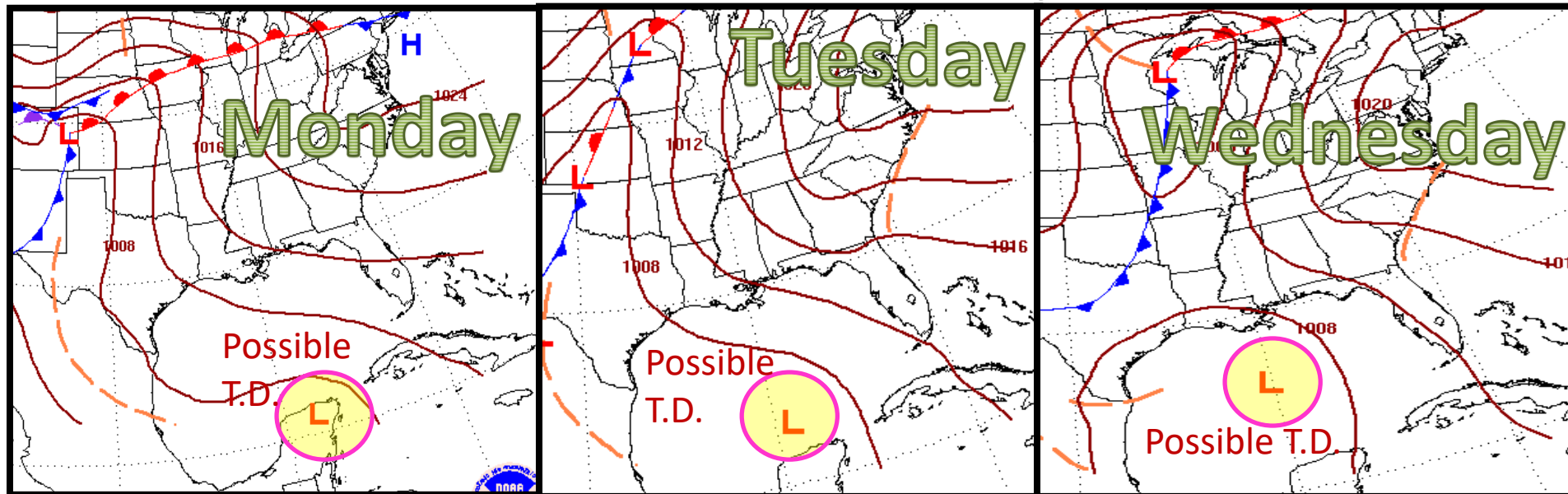
Ocean Heat Content: 10/05/2018



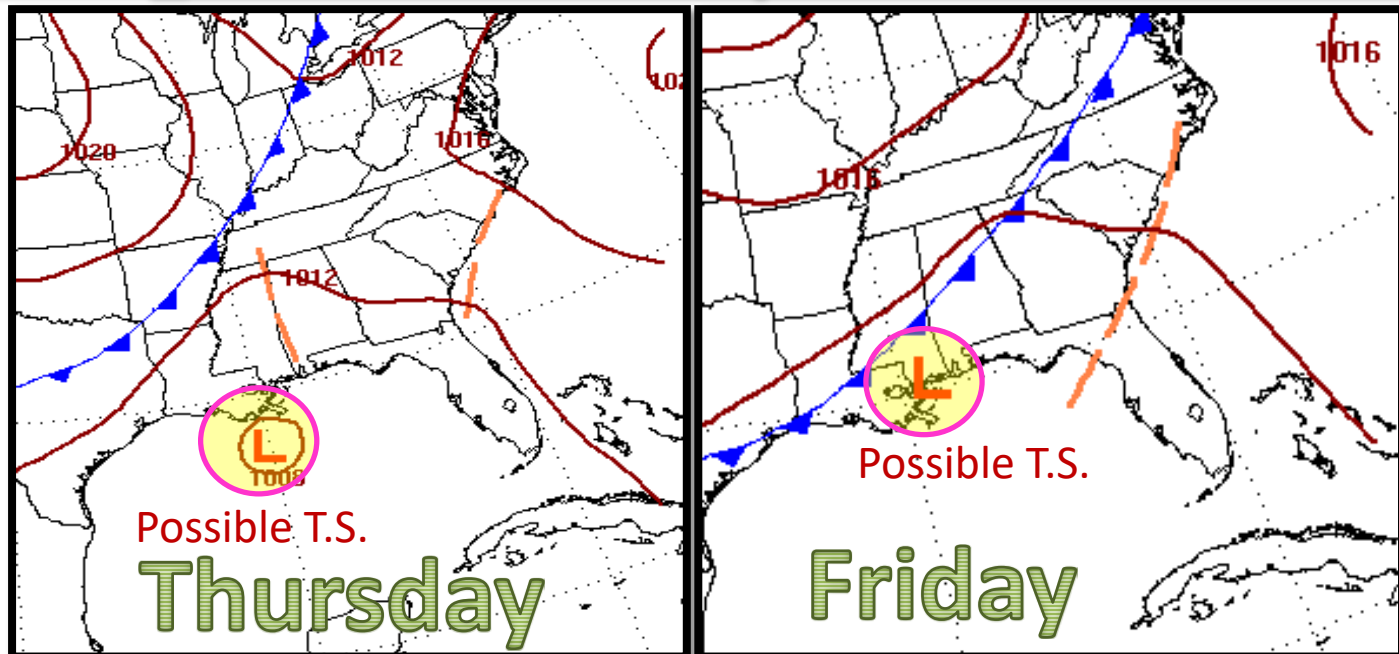
Ocean temperatures and the depth of warm water (heat content) is sufficient for development in the Caribbean and central Gulf.



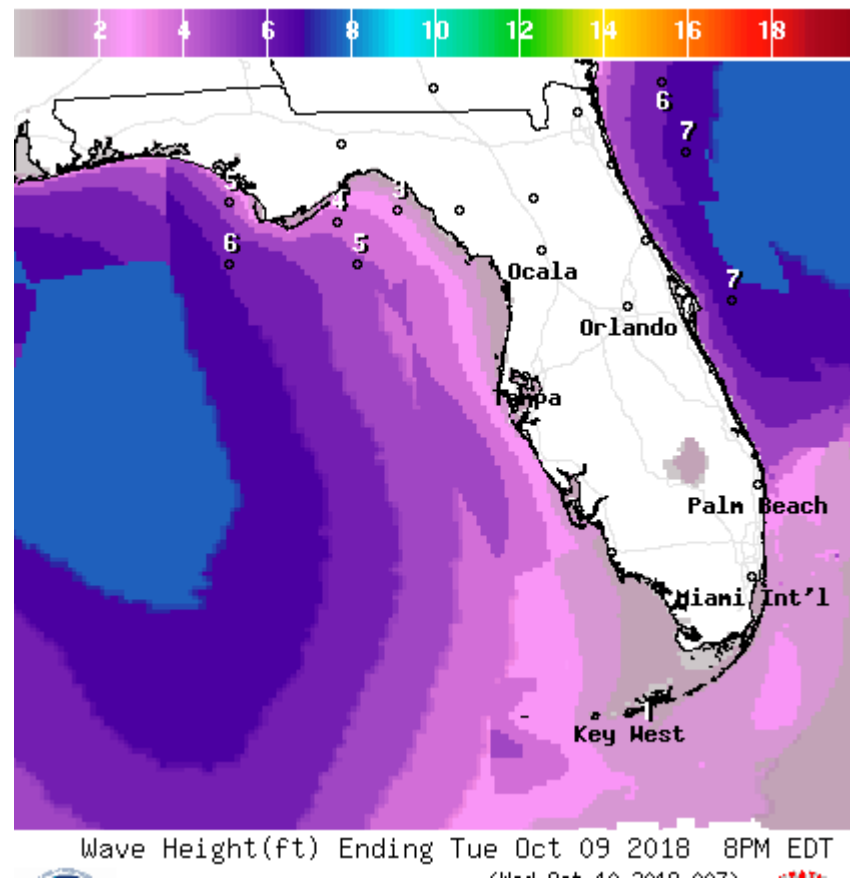
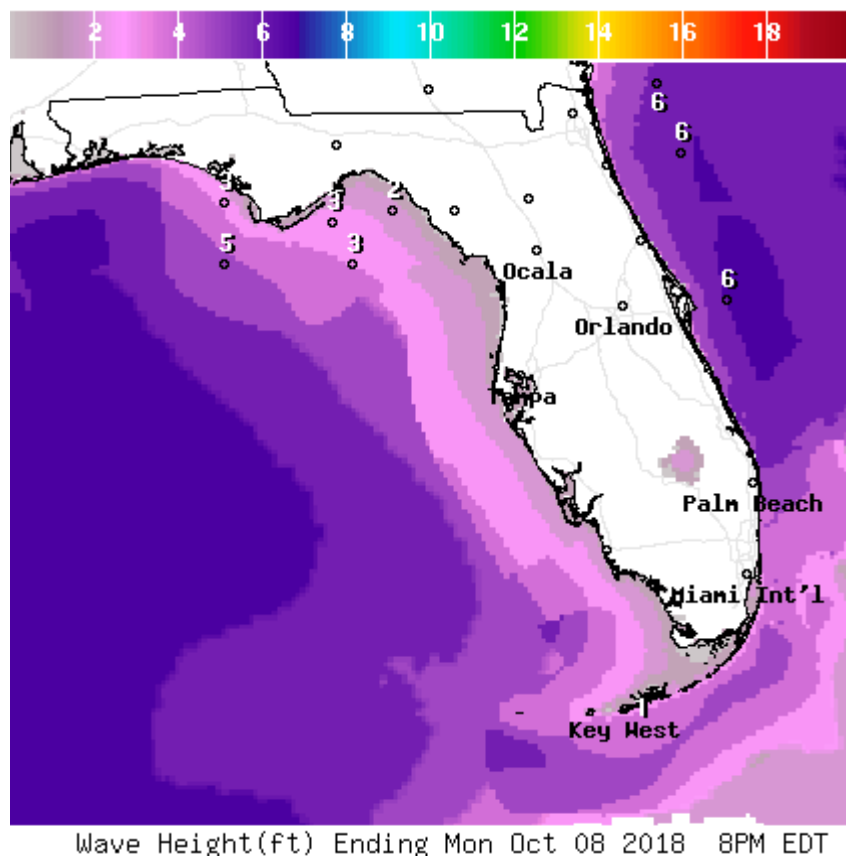
Forecast Weather Map (fronts)



The Caribbean disturbance is forecast to move near or across the Yucatan Peninsula over the weekend and emerge into the southern Gulf of Mexico by Tuesday. Track beyond this timeframe is somewhat uncertain and dependent on the timing and strength of an approaching cold front later in the week. If the front moves faster than indicated, the system may be pushed to the east before reaching the U.S. Gulf Coast.



Forecast Wave Heights – Monday & Tuesday



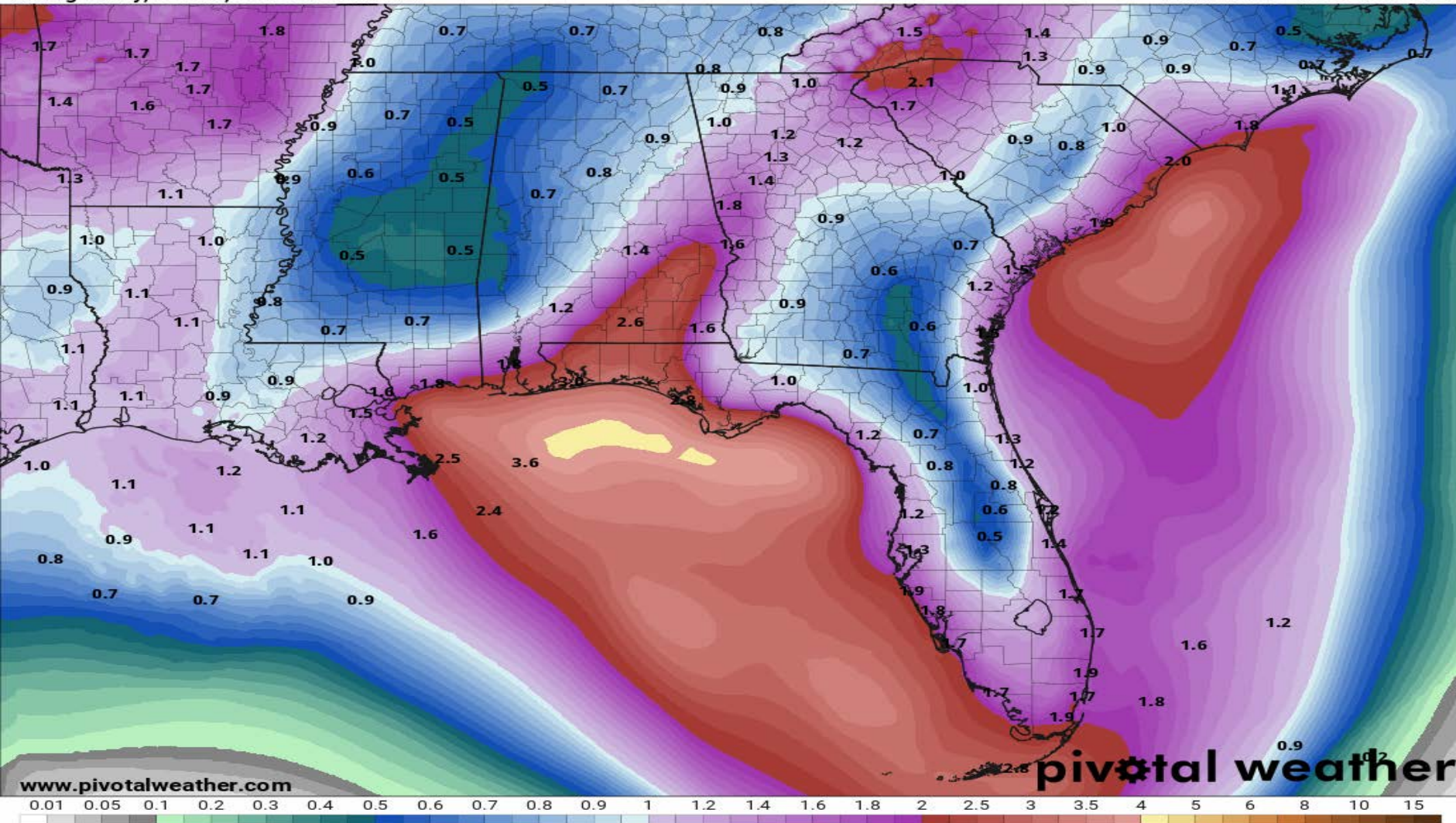
Regardless of track, ocean swells will increase the rip current threat along the Panhandle coast next week. Any coastal flooding potential will depend on the intensity of the system.

Forecast Cumulative Rain Totals – Next 7 Days

Actual rain totals will be dependent on the strength and forward speed of the system and does not account for isolated higher totals.

7-Day Precipitation (in)
Ending Friday, Oct. 12, 2018 at 8 a.m. EDT

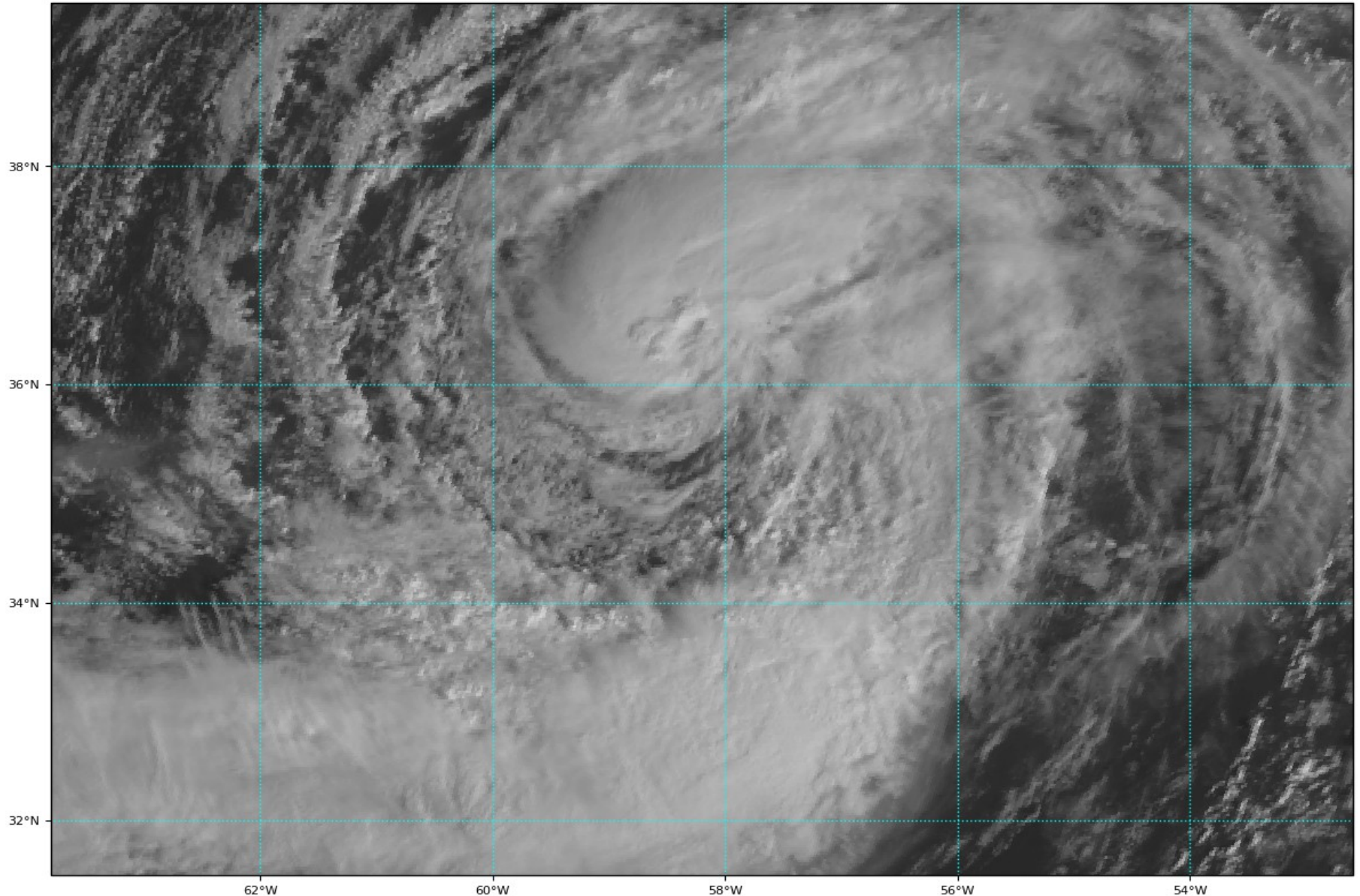
Init: Fri 2018-10-05 12z WPC



Tropical Storm Leslie Satellite Image

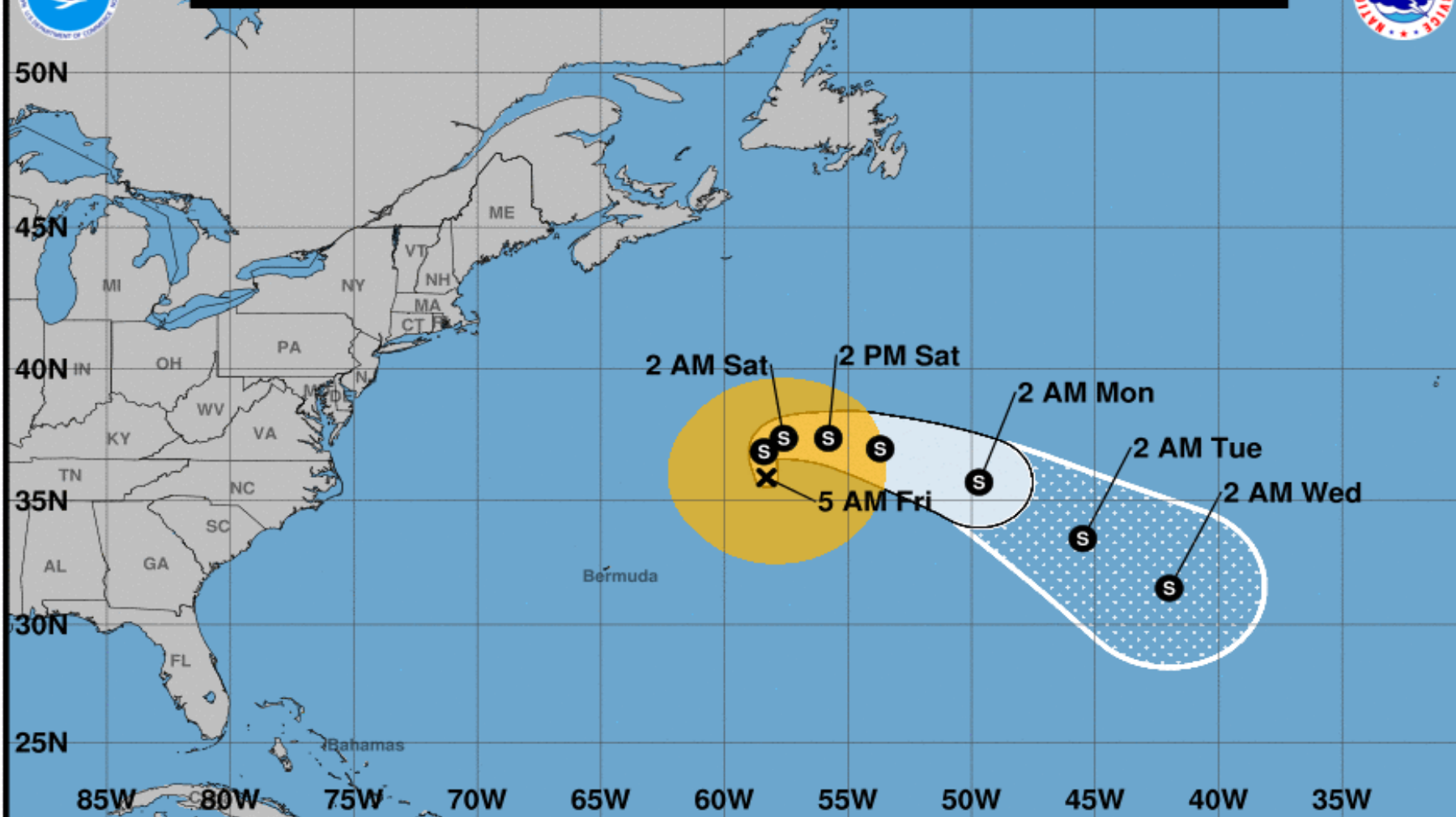
GOES-16 Channel 2 (visible) / Channel 7 (shortwave IR) [Day/Night] at 12:35Z Oct 05, 2018

TROPICALTIDBITS.COM





Note: The cone contains the probable path of the storm center but does not show the size of the storm. Hazardous conditions can occur outside of the cone.



Tropical Storm Leslie

Friday October 05, 2018

5 AM AST Advisory 36

NWS National Hurricane Center

Current information: x

Center location 35.9 N 58.3 W

Maximum sustained wind 65 mph

Movement NNW at 14 mph

Forecast positions:

● Tropical Cyclone ○ Post/Potential TC

Sustained winds: D < 39 mph

S 39-73 mph H 74-110 mph M > 110 mph

Potential track area:

Day 1-3 Day 4-5

Watches:

Hurricane Trop Stm

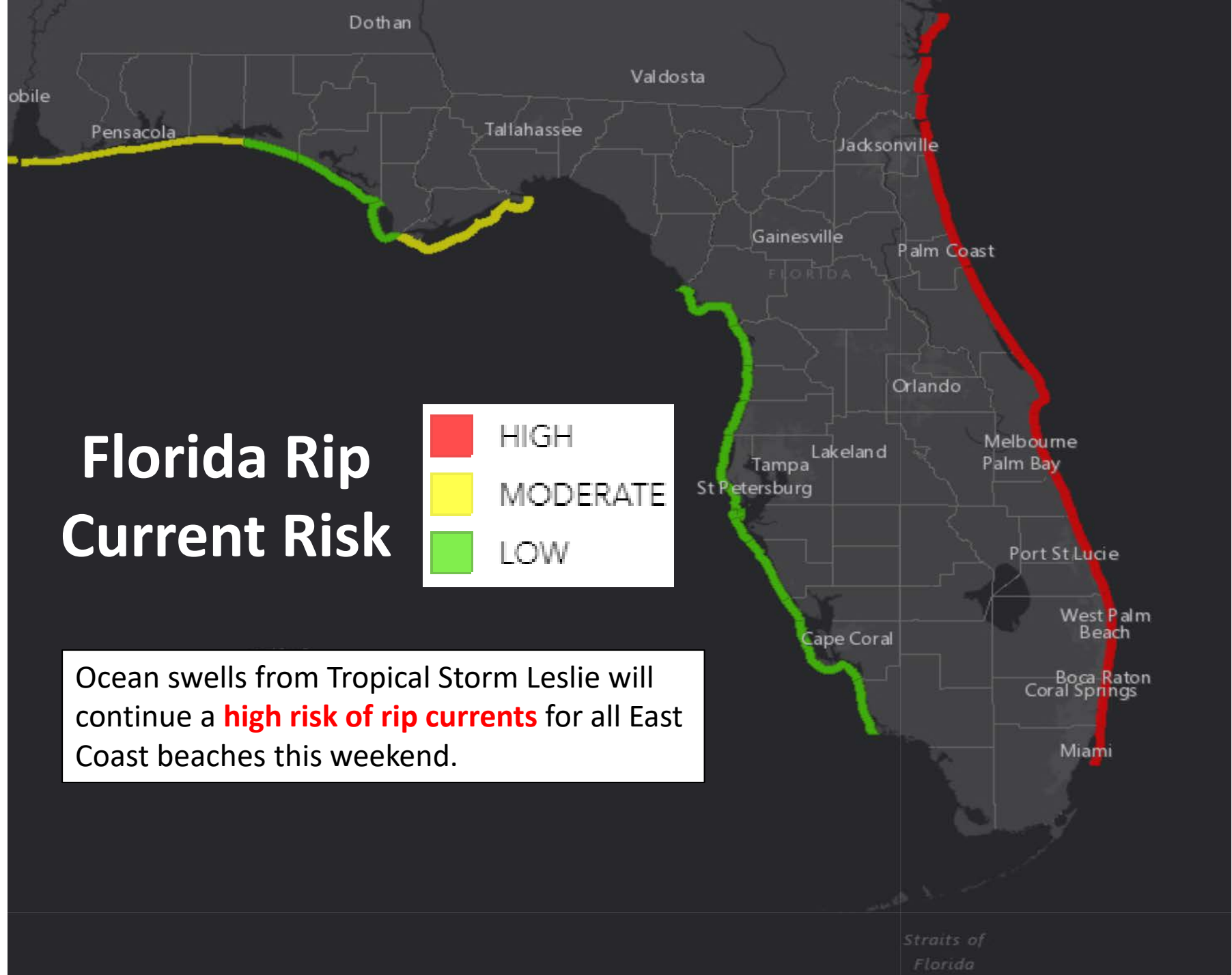
Warnings:

Hurricane Trop Stm

Current wind extent:

Hurricane Trop Stm

Ocean swells from Tropical Storm Leslie will continue a **high risk of rip currents** for all East Coast beaches this weekend.



Summary

Tropical Storm Leslie:

- At 5 AM EDT Monday, Tropical Storm Leslie was located about 445 miles northeast of Bermuda.
- Maximum sustained winds are near 65 mph, and some slight weakening is expected over the next few days.
- Leslie is moving north-northwest at 14 mph, but it will slow down and make a sharp turn eastward or east-southeastward tonight or Saturday.

Caribbean Low

- An area of low pressure nears the Nicaragua-Honduras border is producing a disorganized area of showers and thunderstorms.
- Strong wind shear just to the north will prevent any significant development over the next couple days, but gradual organization is possible later this weekend into early next week.
- The odds for development are 30% (low) in the next 48 hours, and 60% (medium) over the next 5 days.
- A tropical depression may form early next week in the northwestern Caribbean Sea or the southern Gulf of Mexico.
- Its future once it emerges into the Gulf of Mexico remains uncertain both in terms of track and intensity as conditions will only be somewhat favorable.
- The next name on the list is “Michael.”

Florida Outlook:

- Tropical Storm Leslie is producing a large area of long-period swells that will impact the East Coast of Florida for the next few days, resulting in a high risk of rip currents along all Atlantic beaches.
- It is uncertain what exact impacts can be expected to Florida from the low in the Caribbean due to uncertainty both in track and intensity.
- Regardless of development, an increase in swells and rip current risks will be possible along the Florida Panhandle Coast next week.
- Most rain impacts will likely be on the east side of the system regardless of where this low tracks.

Another briefing packet will be issued Saturday morning, or Friday afternoon if conditions change. For the latest information on the tropics, please visit the National Hurricane Center website at www.hurricanes.gov.



TROPICAL UPDATE

Created by:

Amy Godsey, Chief State Meteorologist

Cameron Young, Assistant State Meteorologist

State Meteorological Support Unit

Florida Division of Emergency
Management

Users wishing to subscribe (approval pending) to this distribution list, register at https://public.govdelivery.com/accounts/FLDEM/subscriber/new?topic_id=SERT_Met_Tropics.

Other reports available for subscription are available at

<https://public.govdelivery.com/accounts/FLDEM/subscriber/new?preferences=true>