



# **TROPICAL UPDATE**

**11 AM EDT**

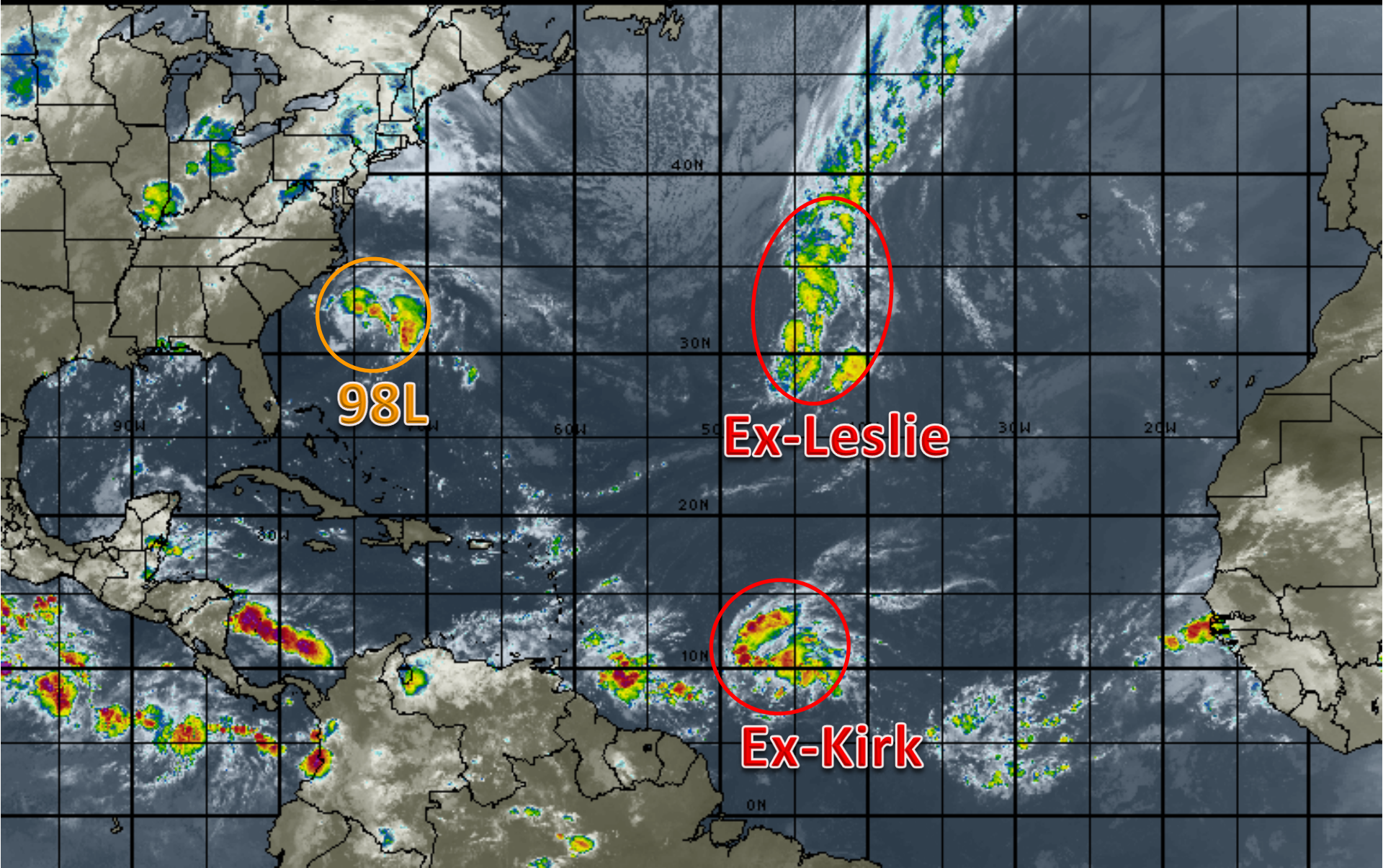
**Tuesday, September 25, 2018**

**Remnants of Kirk (60%), Remnants of Leslie (70%),  
& Invest 98L (50%)**

**This update is intended for government and emergency response officials, and is provided for informational and situational awareness purposes only. Forecast conditions are subject to change based on a variety of environmental factors. For additional information, or for any life safety concerns with an active weather event please contact your County Emergency Management or Public Safety Office, local National Weather Service forecast office or visit the National Hurricane Center website at [www.nhc.noaa.gov](http://www.nhc.noaa.gov).**

# Atlantic Basin Satellite Image

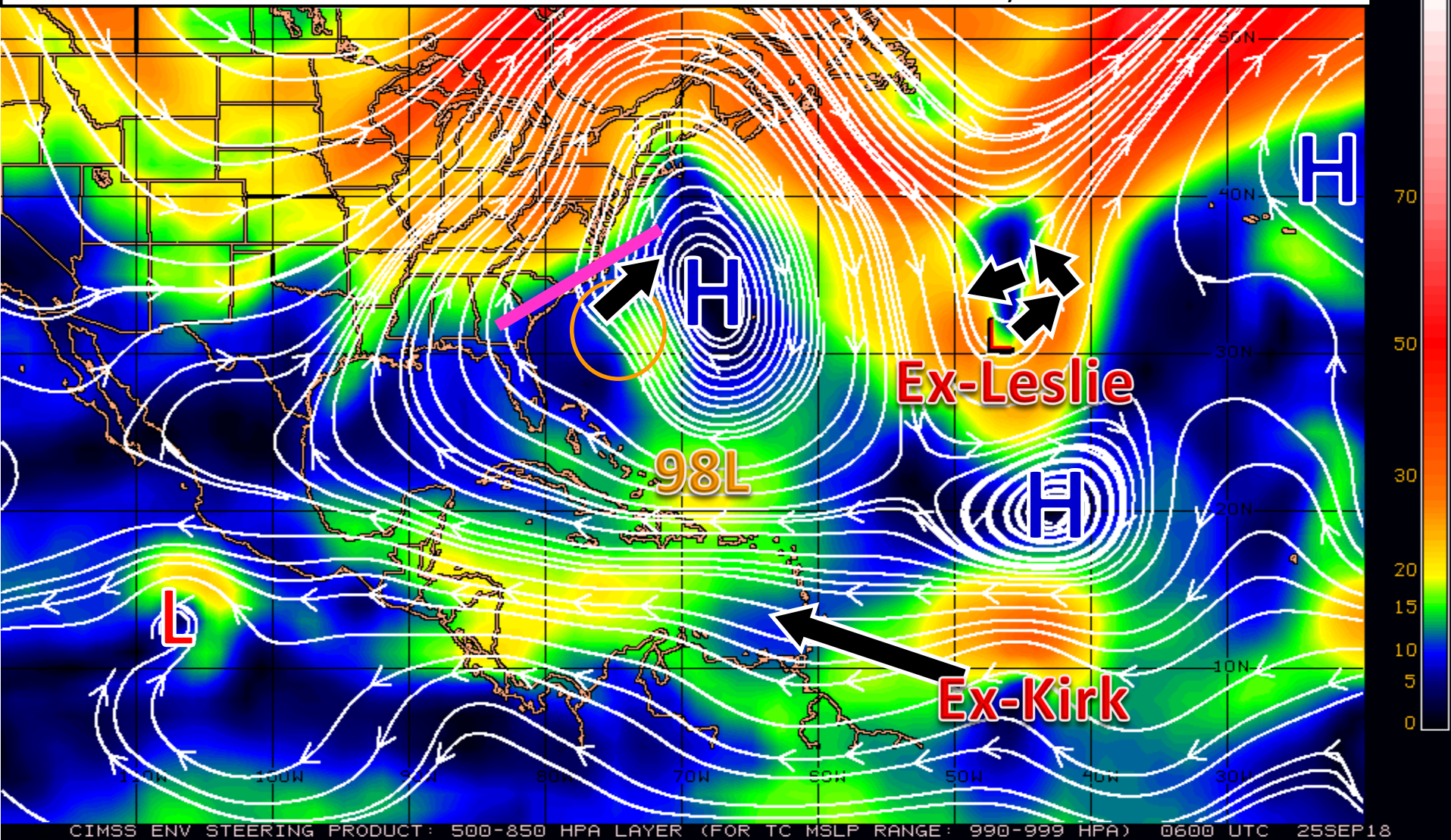
12:00 25-SEP-2018 GMT Copyright © 1998-2018 MSI Corporation <http://www.wsi.com>





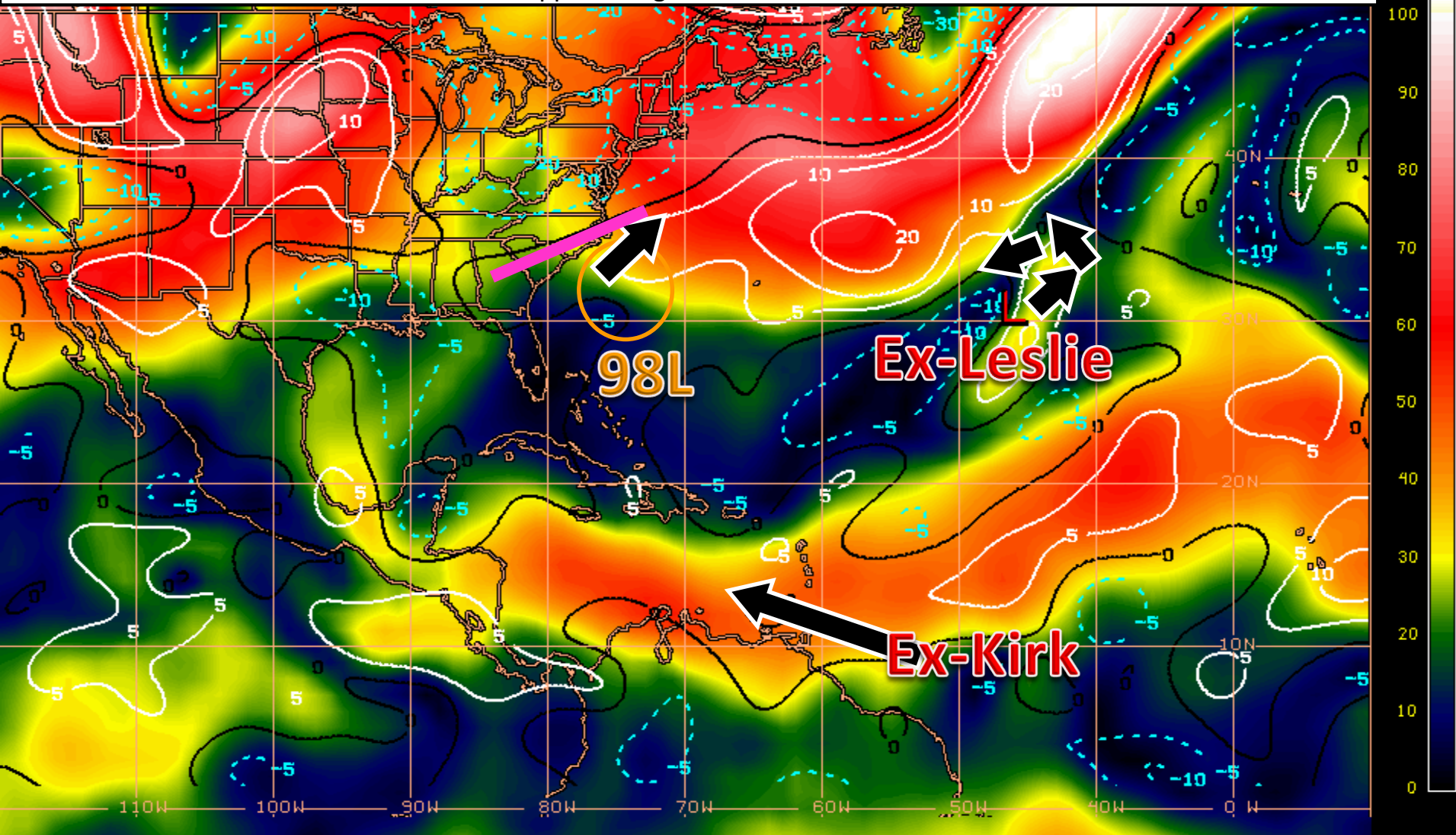
# Steering Currents

98L will move north around a high pressure system in the western Atlantic before merging with a cold front (pink line) tomorrow and racing northeast. The remnants of Kirk will rapidly move westward or west-northwestward over the next few days under a strong high pressure. The remnants of Leslie will meander in the north-central Atlantic over the next several days.



# Wind Shear (shaded) and Wind Shear Tendencies (contoured)

Wind shear will begin to increase for 98L later today as the window for development closes. The remnants of Kirk will be moving into an environment with stronger wind shear as it approaches the Caribbean. Wind shear near the remnants of Leslie will increase with an approaching cold front but will decrease later this week.

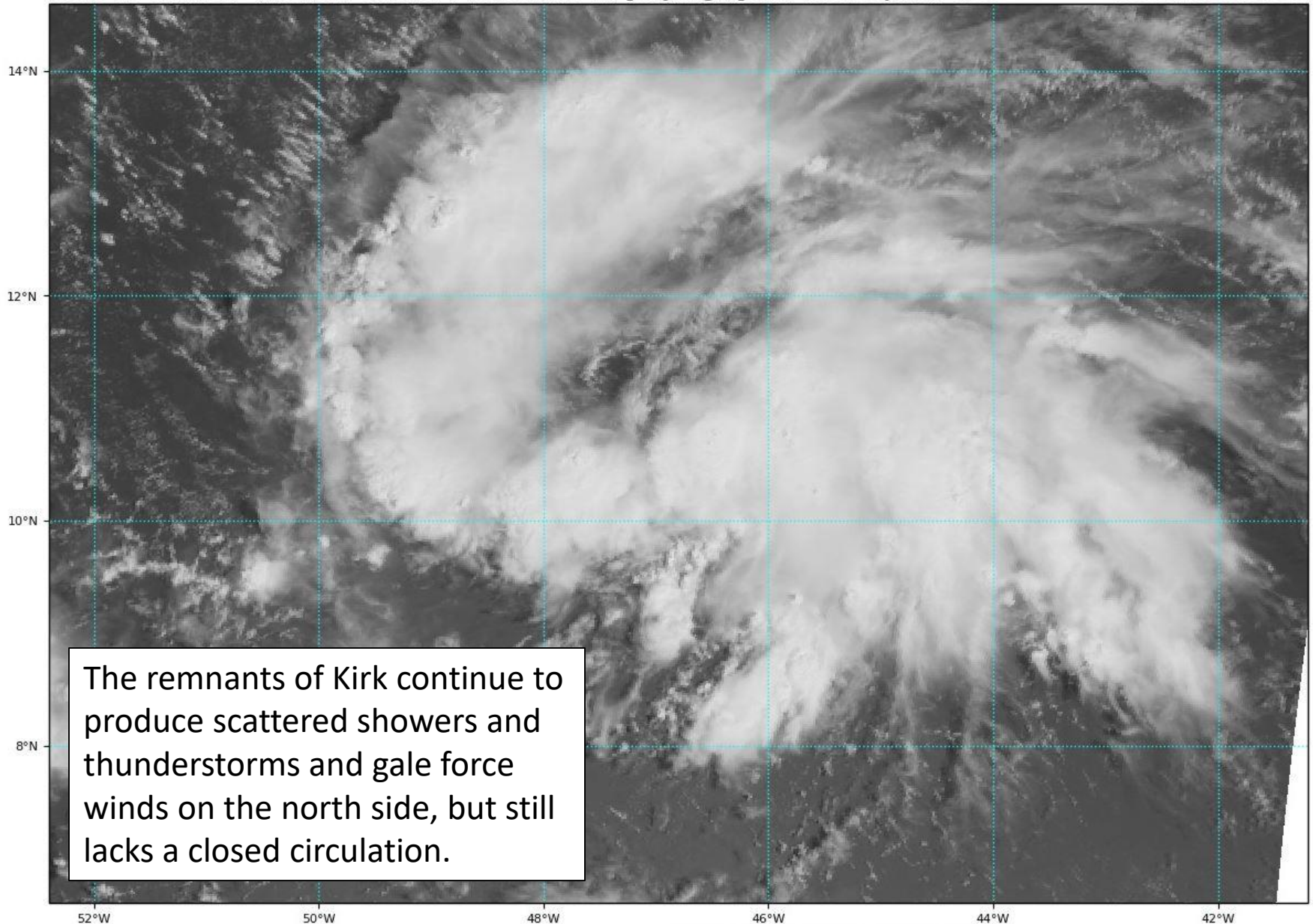




# Remnants of Kirk Satellite Image

GOES-16 Channel 2 (visible) / Channel 7 (shortwave IR) [Day/Night] at 12:50Z Sep 25, 2018

TROPICALTIDBITS.COM





# Five-Day Graphical Tropical Weather Outlook

National Hurricane Center Miami, Florida



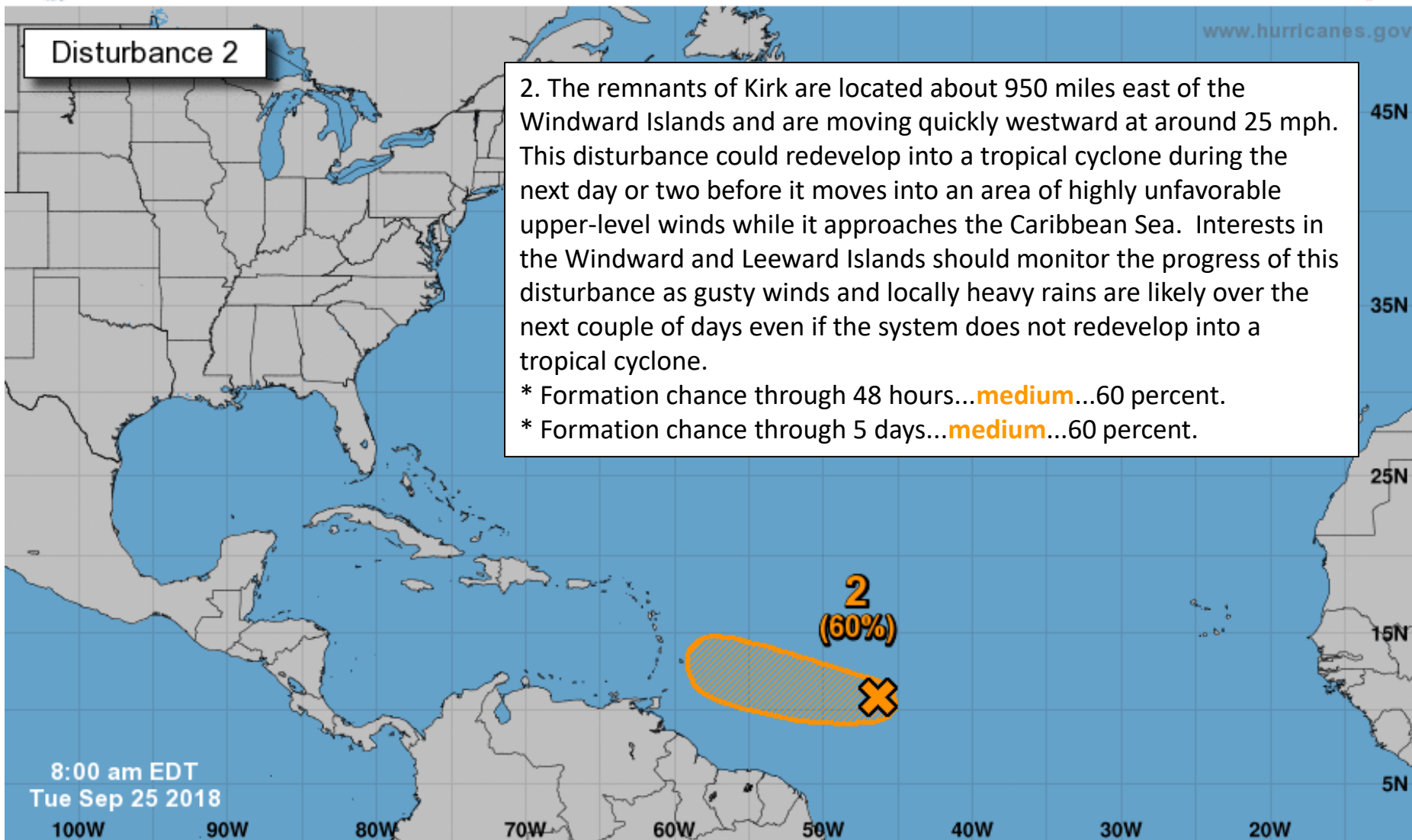
www.hurricanes.gov

## Disturbance 2

2. The remnants of Kirk are located about 950 miles east of the Windward Islands and are moving quickly westward at around 25 mph. This disturbance could redevelop into a tropical cyclone during the next day or two before it moves into an area of highly unfavorable upper-level winds while it approaches the Caribbean Sea. Interests in the Windward and Leeward Islands should monitor the progress of this disturbance as gusty winds and locally heavy rains are likely over the next couple of days even if the system does not redevelop into a tropical cyclone.

\* Formation chance through 48 hours...**medium**...60 percent.

\* Formation chance through 5 days...**medium**...60 percent.



8:00 am EDT  
Tue Sep 25 2018

Current Disturbances and Five-Day Cyclone Formation Chance: < 40% 40-60% > 60%  
Tropical or Sub-Tropical Cyclone: Depression Storm Hurricane  
 Post-Tropical Cyclone or Remnants

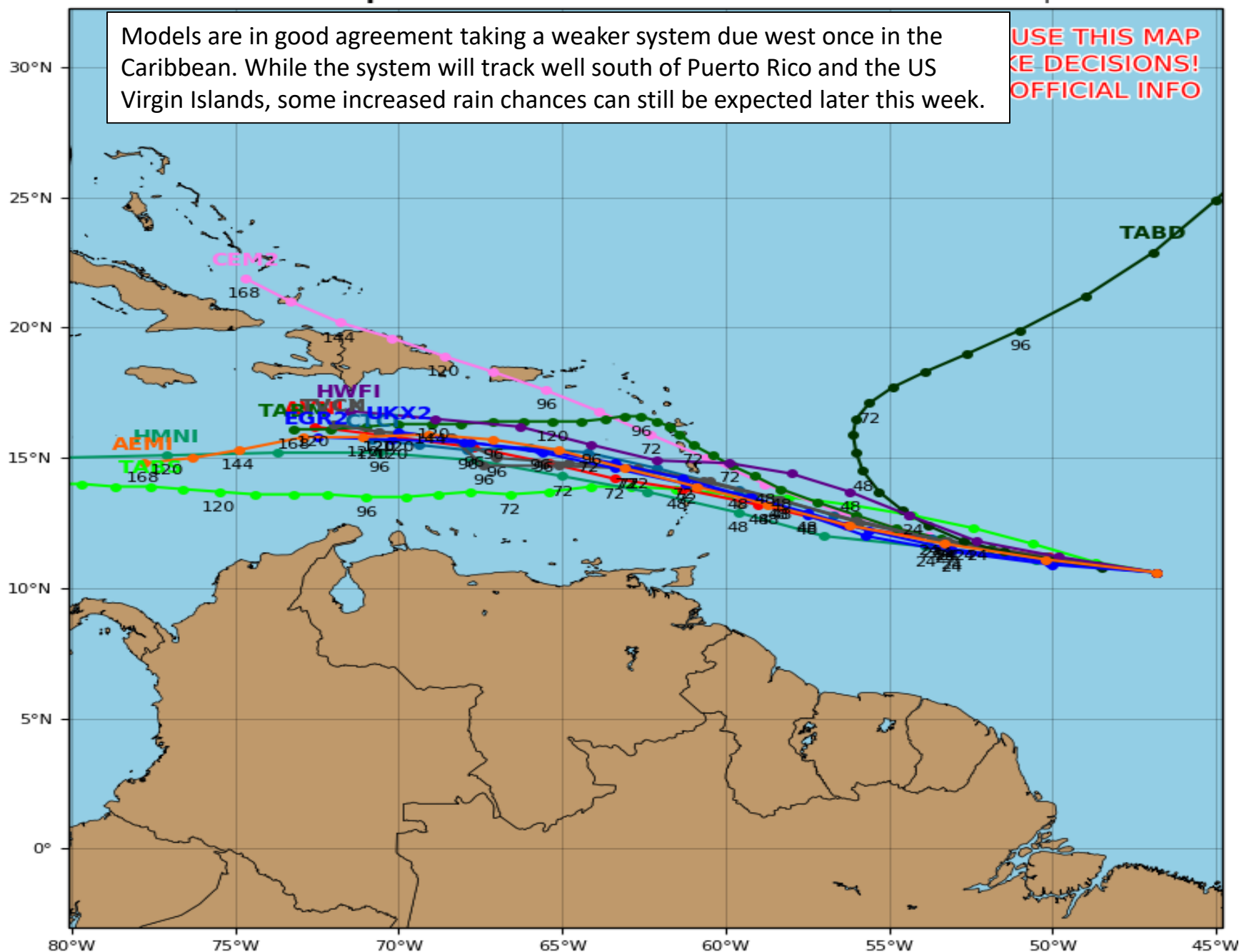
# Remnants of KIRK Model Track Guidance

Initialized at 12z Sep 25 2018

Levi Cowan - tropicaltidbits.com

Models are in good agreement taking a weaker system due west once in the Caribbean. While the system will track well south of Puerto Rico and the US Virgin Islands, some increased rain chances can still be expected later this week.

USE THIS MAP  
TO MAKE DECISIONS!  
NOT OFFICIAL INFO

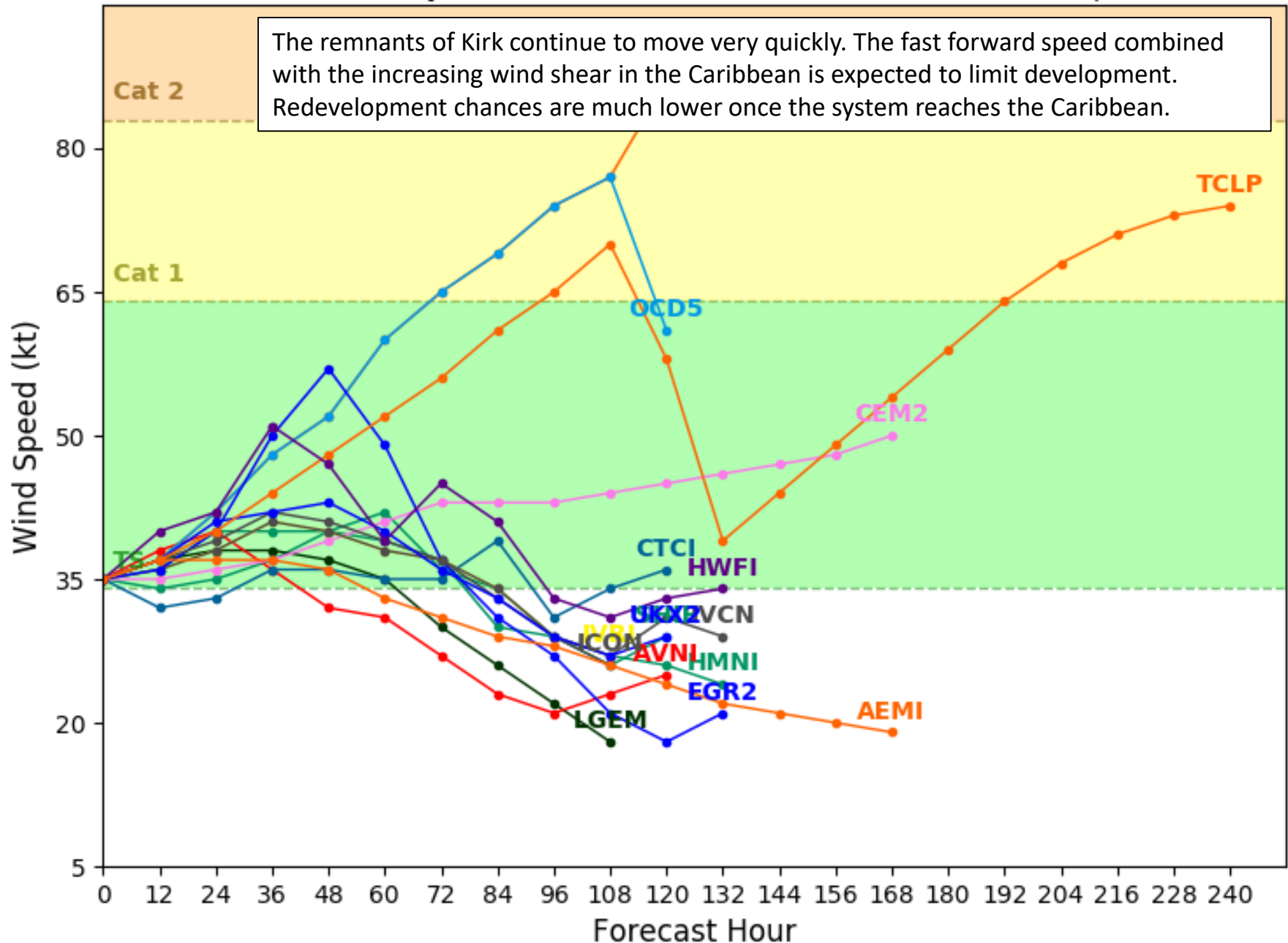


# Remnants of KIRK Model Intensity Guidance

Initialized at 12z Sep 25 2018

Levi Cowan - [tropica1tidbits.com](http://tropica1tidbits.com)

The remnants of Kirk continue to move very quickly. The fast forward speed combined with the increasing wind shear in the Caribbean is expected to limit development. Redevelopment chances are much lower once the system reaches the Caribbean.

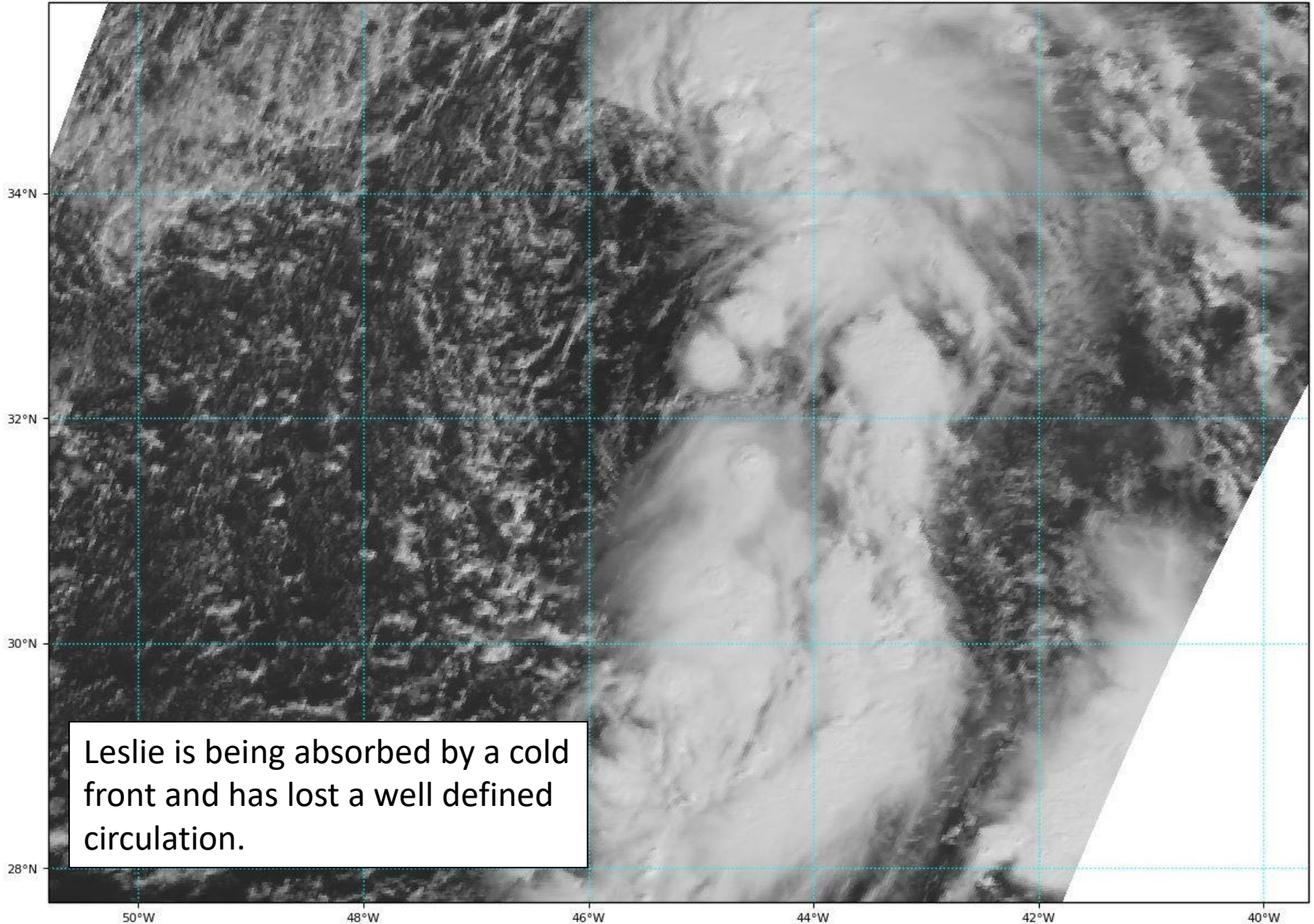




# Remnants of Leslie Satellite Image

GOES-16 Channel 2 (visible) / Channel 7 (shortwave IR) [Day/Night] at 12:50Z Sep 25, 2018

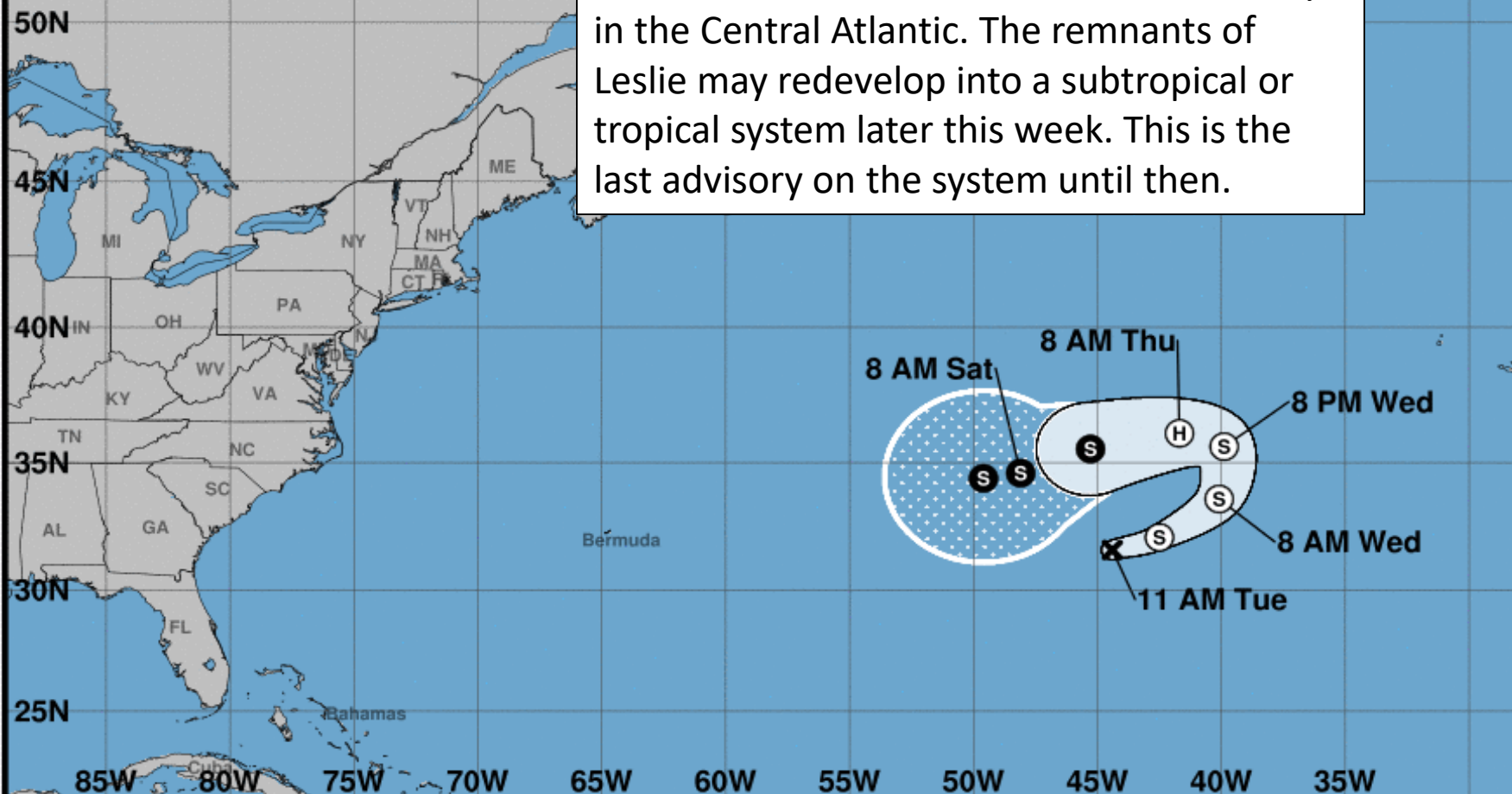
TROPICALTIDBITS.COM





Note: The cone contains the probable path of the storm center but does not show the size of the storm. Hazardous conditions can occur outside of the cone.

Leslie will meander for the next several days in the Central Atlantic. The remnants of Leslie may redevelop into a subtropical or tropical system later this week. This is the last advisory on the system until then.

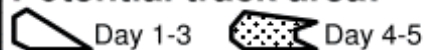


**Post-Tropical Cyclone Leslie**  
Tuesday September 25, 2018  
11 AM AST Advisory 9  
NWS National Hurricane Center

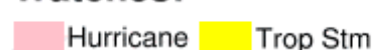
**Current information: x**  
Center location 31.6 N 44.4 W  
Maximum sustained wind 35 mph  
Movement E at 12 mph

**Forecast positions:**  
● Tropical Cyclone ○ Post/Potential TC  
Sustained winds: D < 39 mph  
S 39-73 mph H 74-110 mph M > 110 mph

**Potential track area:**



**Watches:**



**Warnings:**



**Current wind extent:**





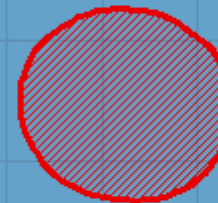
# Five-Day Graphical Tropical Weather Outlook

National Hurricane Center Miami, Florida



www.hurricanes.gov

Disturbance 3



**3**  
**(70%)**

3. Leslie has become post-tropical today after it merged with a cold front over the central Atlantic. Leslie is expected to reacquire subtropical or tropical characteristics by the end of the week as it meanders over the central Atlantic.

\* Formation chance through 48 hours...**low**...near 0 percent.

\* Formation chance through 5 days...**high**...70 percent.

8:00 am EDT  
Tue Sep 25 2018

100W 90W 80W 70W 60W 50W 40W 30W 20W

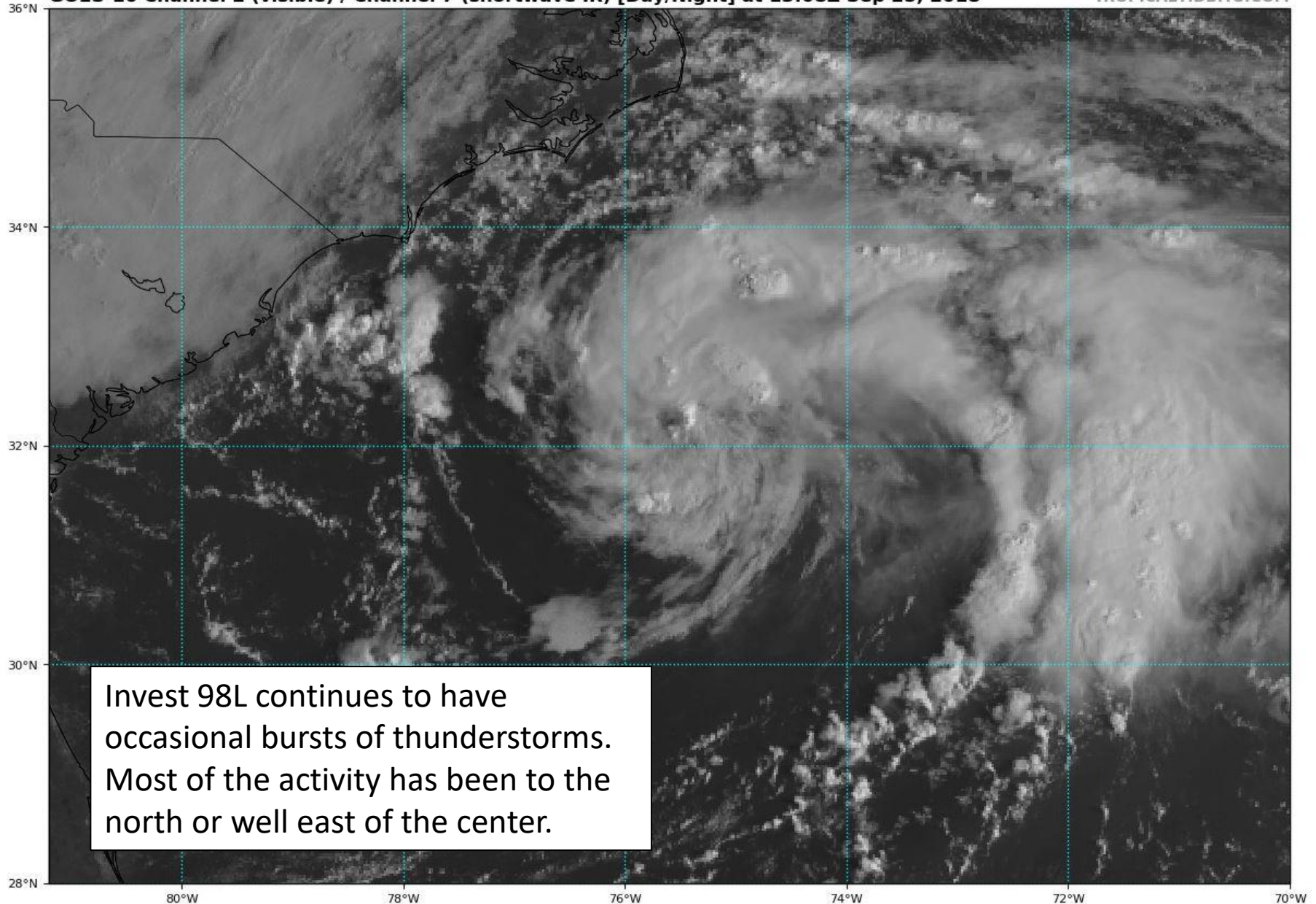
Current Disturbances and Five-Day Cyclone Formation Chance: < 40% 40-60% > 60%  
Tropical or Sub-Tropical Cyclone: Depression Storm Hurricane  
 Post-Tropical Cyclone or Remnants



# Invest 98L Satellite Image

GOES-16 Channel 2 (visible) / Channel 7 (shortwave IR) [Day/Night] at 13:08Z Sep 25, 2018

TROPICALTIDBITS.COM





# Five-Day Graphical Tropical Weather Outlook

National Hurricane Center Miami, Florida



www.hurricanes.gov

## Disturbance 1

1. A broad area of low pressure located about 260 miles south of Cape Hatteras, North Carolina, continues to produce showers and thunderstorms on its north side. Satellite and surface data indicate that the circulation of the low is elongated and not well organized. However, this system could still become a tropical depression later today while it moves northwestward. By tonight and Wednesday, additional development appears unlikely, due to strong upper-level winds, while the system moves northward and north-northeastward near the southeastern United States coast.

\* Formation chance through 48 hours...**medium**...50 percent.

\* Formation chance through 5 days...**medium**...50 percent.

1  
(50%)

8:00 am EDT  
Tue Sep 25 2018

100W 90W 80W 70W 60W 50W 40W 30W 20W

Current Disturbances and Five-Day Cyclone Formation Chance: < 40% 40-60% > 60%

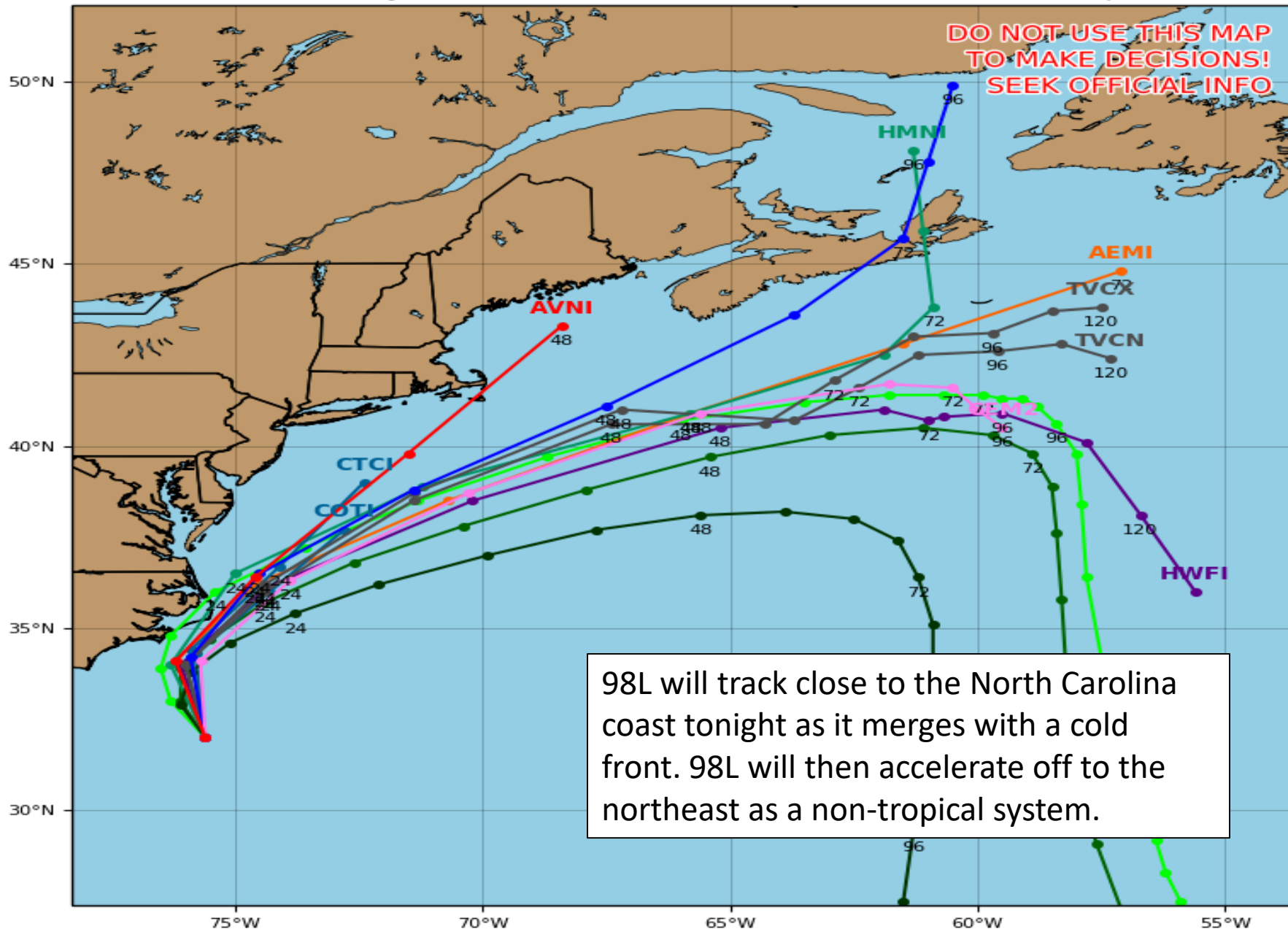
Tropical or Sub-Tropical Cyclone: Depression Storm Hurricane

Post-Tropical Cyclone or Remnants

# Invest 98L Model Track Guidance

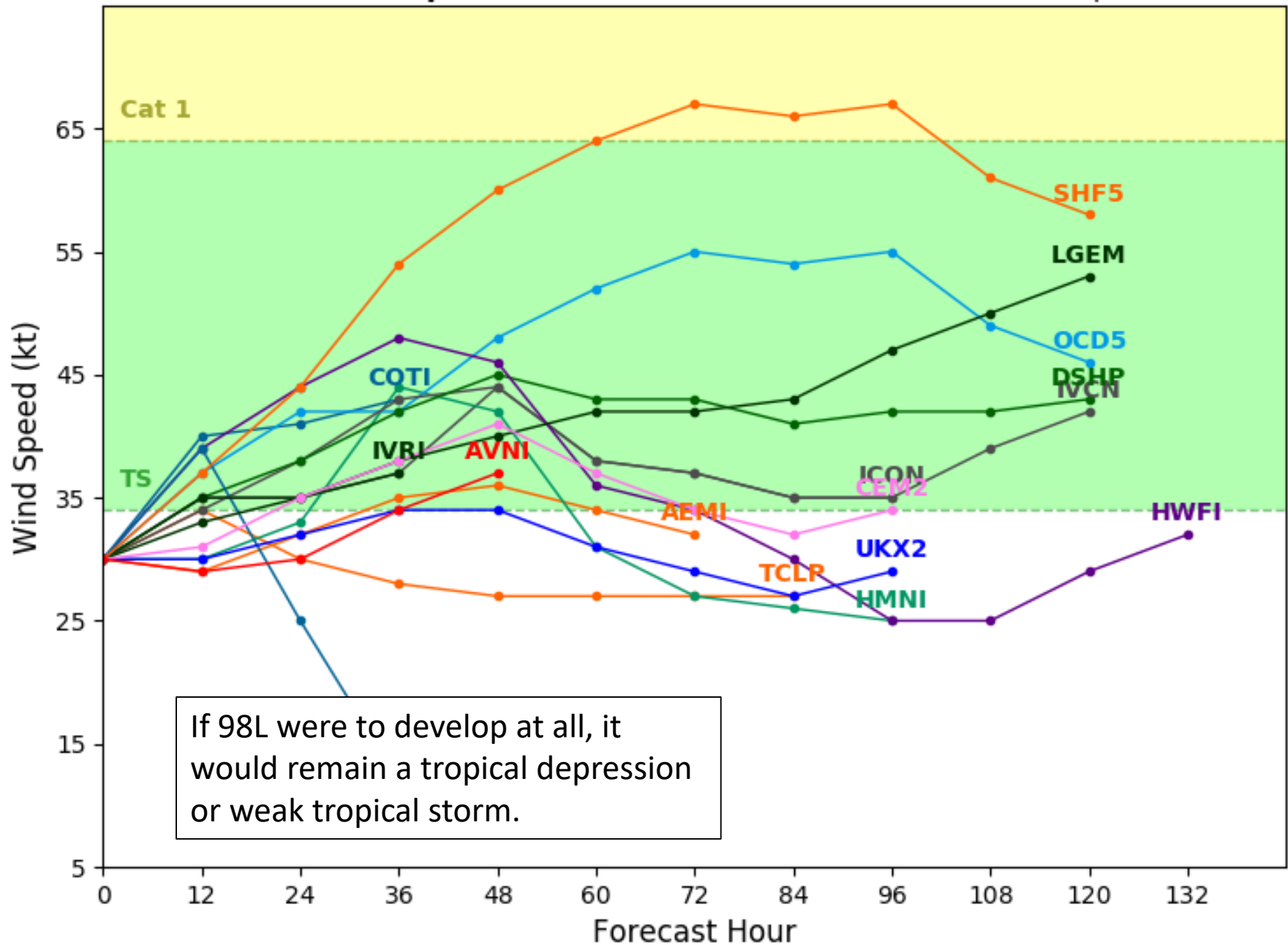
Initialized at 12z Sep 25 2018

Levi Cowan - tropicaltidbits.com





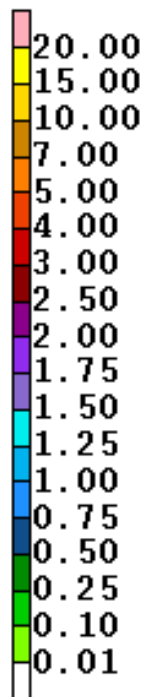
Levi Cowan - [tropicaltidbits.com](http://tropicaltidbits.com)



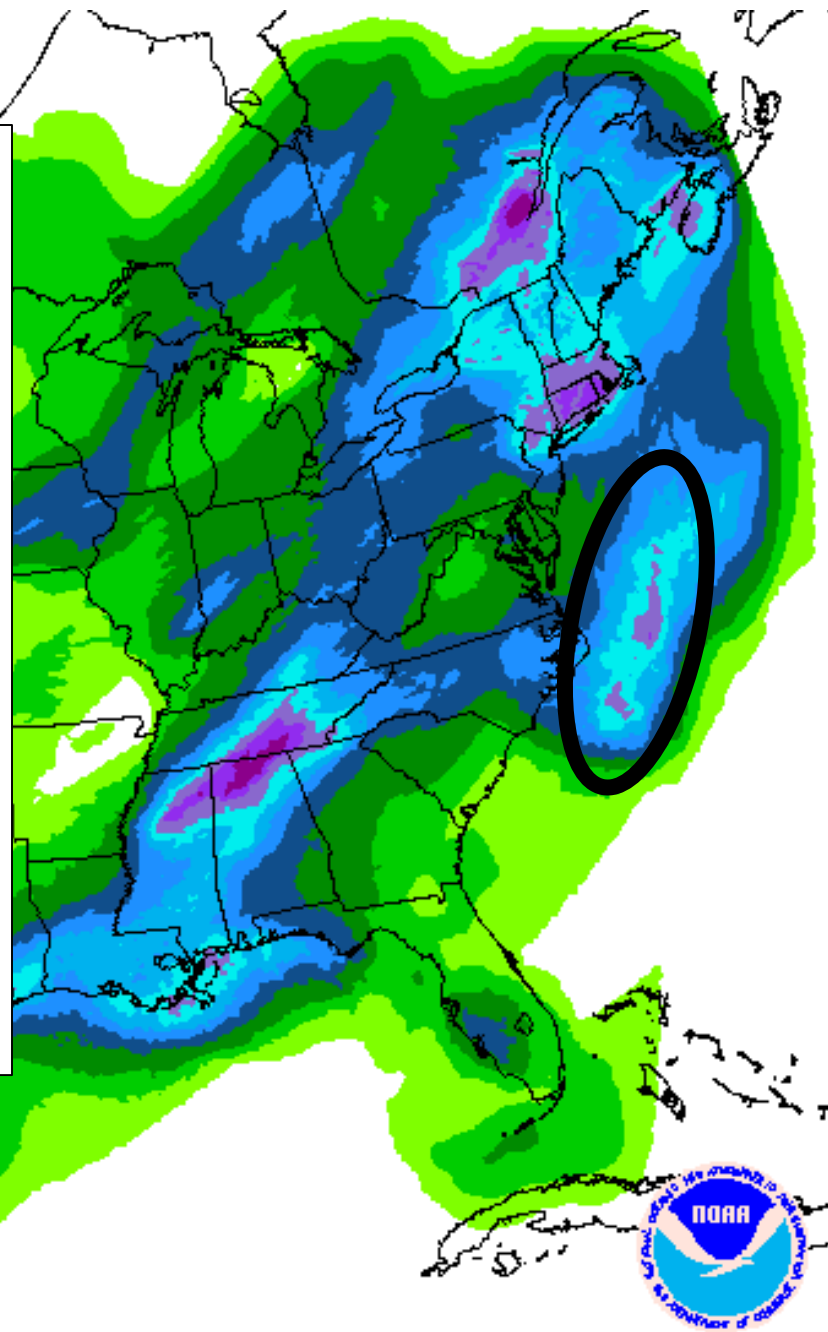
Any significant rainfall from this system will remain offshore of North Carolina. Along the coast and Outer Banks of North Carolina, localized totals of 2" will be possible from gusty showers this afternoon and tonight. However, due to the isolated nature of these rainfall totals there will not be an impact to ongoing river flooding.

(2-Day Cumulative Rainfall Amounts Shown)

Wind gusts to 25 mph will be possible Tuesday and Wednesday along the North Carolina coast.



DAY 1-2 QPF  
VALID 12Z TUE SEP 25 2018  
THRU 12Z THU SEP 27 2018  
ISSUED: 1143Z TUE SEP 25 2018  
FORECASTER: WPC/WPC  
NOAA/NWS/NCEP/WPC



# Summary

## **Remnants of Kirk:**

- At 8 AM EDT Tuesday, the remnants of Kirk were located about 950 miles east of the Windward Islands. While the remnants of Kirk are producing gale force winds, it continues to lack a well-defined circulation.
- Kirk is moving very quickly to the west at 25 mph and this fast forward speed is expected to continue over the next few days.
- Kirk's fast motion combined with increasing shear as it approaches the Caribbean will limit Kirk's redevelopment.
- The National Hurricane Center gives the remnants of Kirk at 60% (medium) chance of redevelopment. Regardless of development, gusty winds and locally heavy rains are likely over the next couple of days in the Lesser Antilles.

## **Remnants of Leslie:**

- As of 11 AM EDT Tuesday, Leslie weakened to a non-tropical, remnant low. The remnants of Leslie were located about 1080 miles west of the Azores and were moving to the east at 12 mph.
- Leslie is merging with a cold front and no longer has a closed circulation. This is the last advisory on this system.
- The remnants of Leslie will meander across the Central Atlantic for the next week and may re-acquire subtropical or tropical characteristics this weekend. The National Hurricane Center gives the remnants of Leslie a 70% (high) chance of doing so.
- This system poses no threat to land.

## **Invest 98L:**

- An area of low pressure, designated Invest 98L, is located about 260 miles south of Cape Hatteras, NC and continues to produce disorganized showers and thunderstorms.
- The low pressure area will move north and then northeast, approaching the Outer Banks of North Carolina tonight before accelerating to the northeast after merging with a cold front.
- This system has a brief window today to develop into a tropical depression. The National Hurricane Center gives 98L a 50% (medium) chance of becoming a tropical depression.
- Any significant rainfall from this system will remain offshore. Localized amounts of 2" and wind gusts to 25 mph will be possible along the North Carolina coast this afternoon and tonight. No impact to ongoing river flooding is expected.

## **Florida Outlook:**

- No impacts to Florida are expected at this time from any of these systems, but the remnants of Kirk should be monitored.
- The next name on the list is Michael.

The next tropics packet will be sent out late Wednesday morning. For the latest information on the tropics, please visit the National Hurricane Center website at [www.hurricanes.gov](http://www.hurricanes.gov).





# TROPICAL UPDATE

Created by:

Michael Spagnolo, Deputy State Meteorologist

[Michael.Spagnolo@em.myflorida.com](mailto:Michael.Spagnolo@em.myflorida.com)

State Meteorological Support Unit

Florida Division of Emergency  
Management

Users wishing to subscribe (approval pending) to this distribution list, register at [https://public.govdelivery.com/accounts/FLDEM/subscriber/new?topic\\_id=SERT\\_Met\\_Tropics](https://public.govdelivery.com/accounts/FLDEM/subscriber/new?topic_id=SERT_Met_Tropics).

Other reports available for subscription are available at

<https://public.govdelivery.com/accounts/FLDEM/subscriber/new?preferences=true>