



TROPICAL UPDATE

11 AM EDT

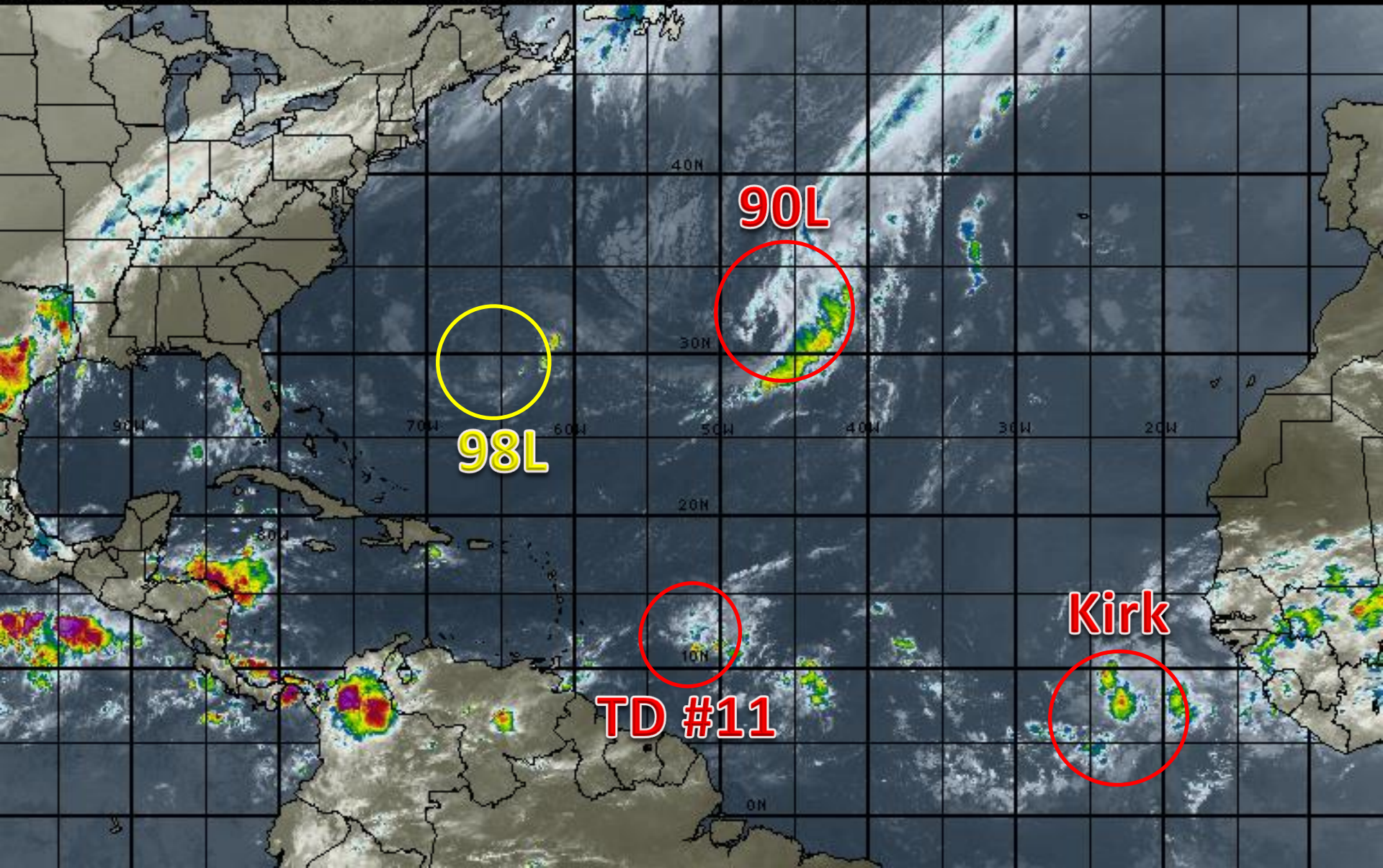
Saturday, September 22, 2018

**Tropical Depression #11, Tropical Storm Kirk,
Invest 98L (30%), Central Atlantic Low (70%)**

This update is intended for government and emergency response officials, and is provided for informational and situational awareness purposes only. Forecast conditions are subject to change based on a variety of environmental factors. For additional information, or for any life safety concerns with an active weather event please contact your County Emergency Management or Public Safety Office, local National Weather Service forecast office or visit the National Hurricane Center website at www.nhc.noaa.gov.

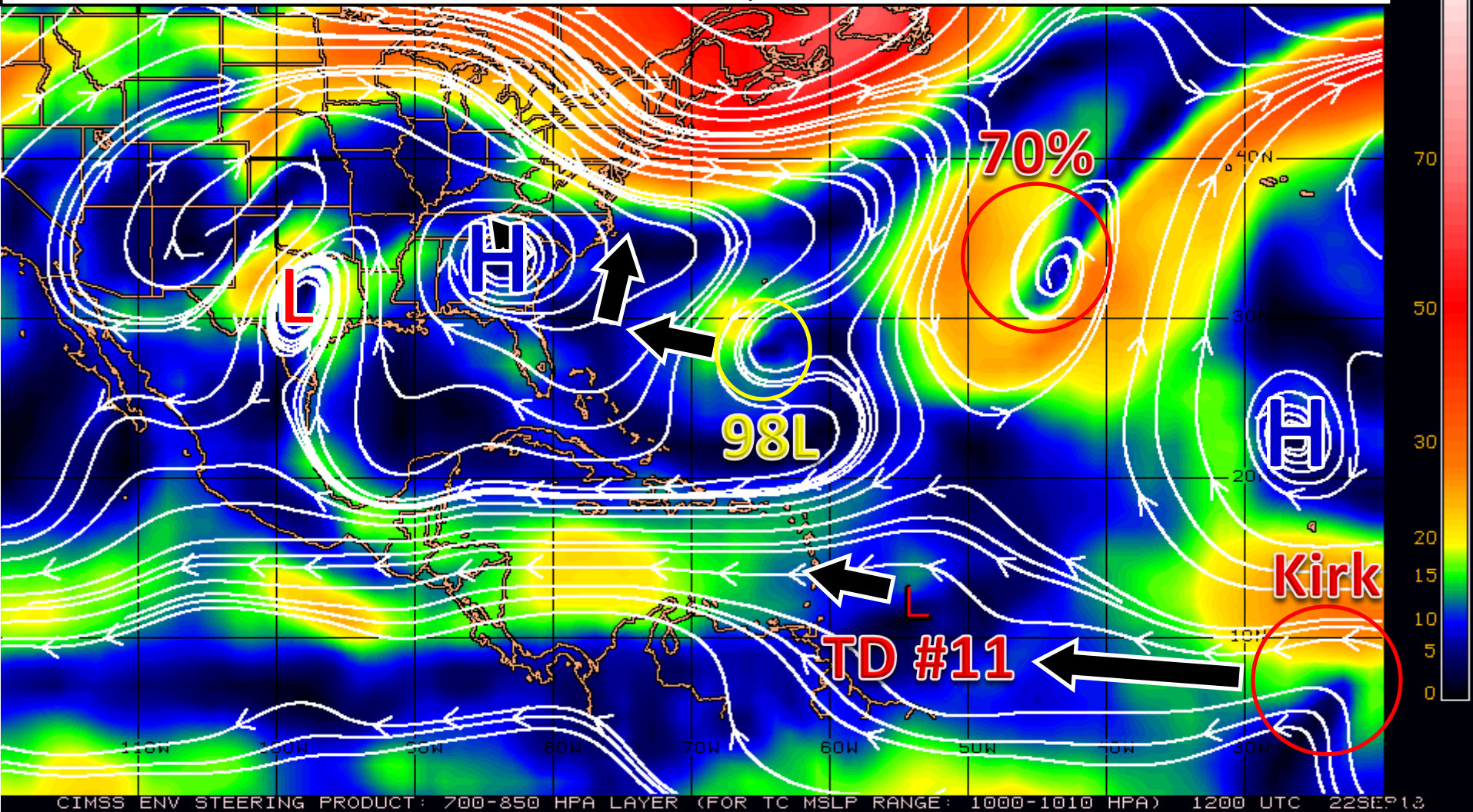
Atlantic Basin Satellite Image

12:00 22-SEP-2018 GMT Copyright © 1998-2018 MSI Corporation <http://www.wsi.com>



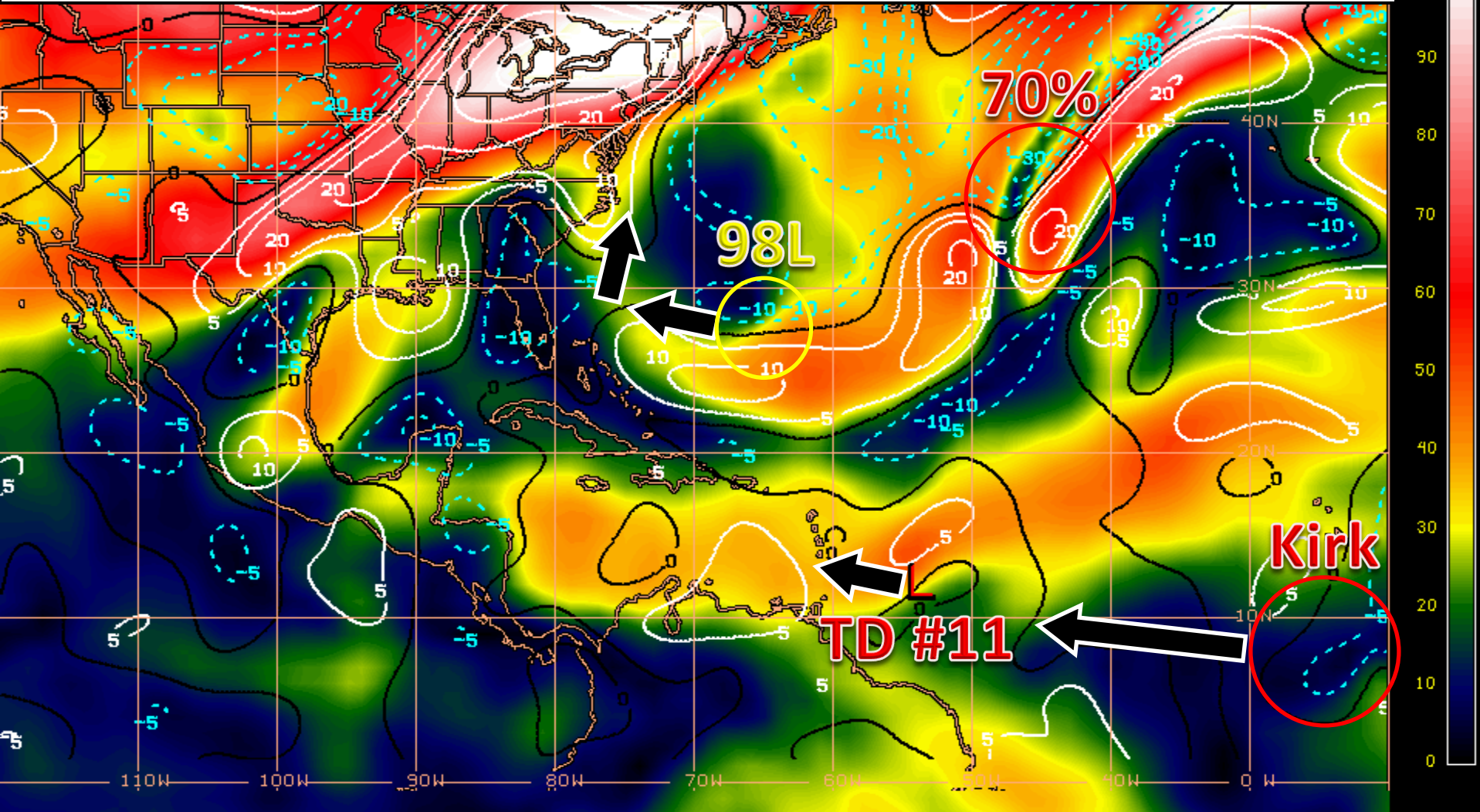
Steering Currents

High pressure over the Southeast U.S. will weaken as a cold front approaches from the west. As the high weakens, it will allow 98L to scoot westward, then turn north ahead of the cold front. TD #11 is in weak steering flow, but will not last much longer. Kirk will rapidly move westward or west-northwestward over the next several days. The low in the central Atlantic will meander in the Central Atlantic over the next several days.



Wind Shear (shaded) and Wind Shear Tendencies (contoured)

98L is current in strong wind shear, but as it moves westward, it may find slightly more favorable conditions. TD #11 is embedded in moderate to strong wind shear, and TD #11 will not last much longer. Kirk is in favorable conditions right now for development, but its own fast speed may cause some shear for itself. The low in the central Atlantic is currently attached to a frontal system. As it detaches, it will likely drift south into more favorable conditions.



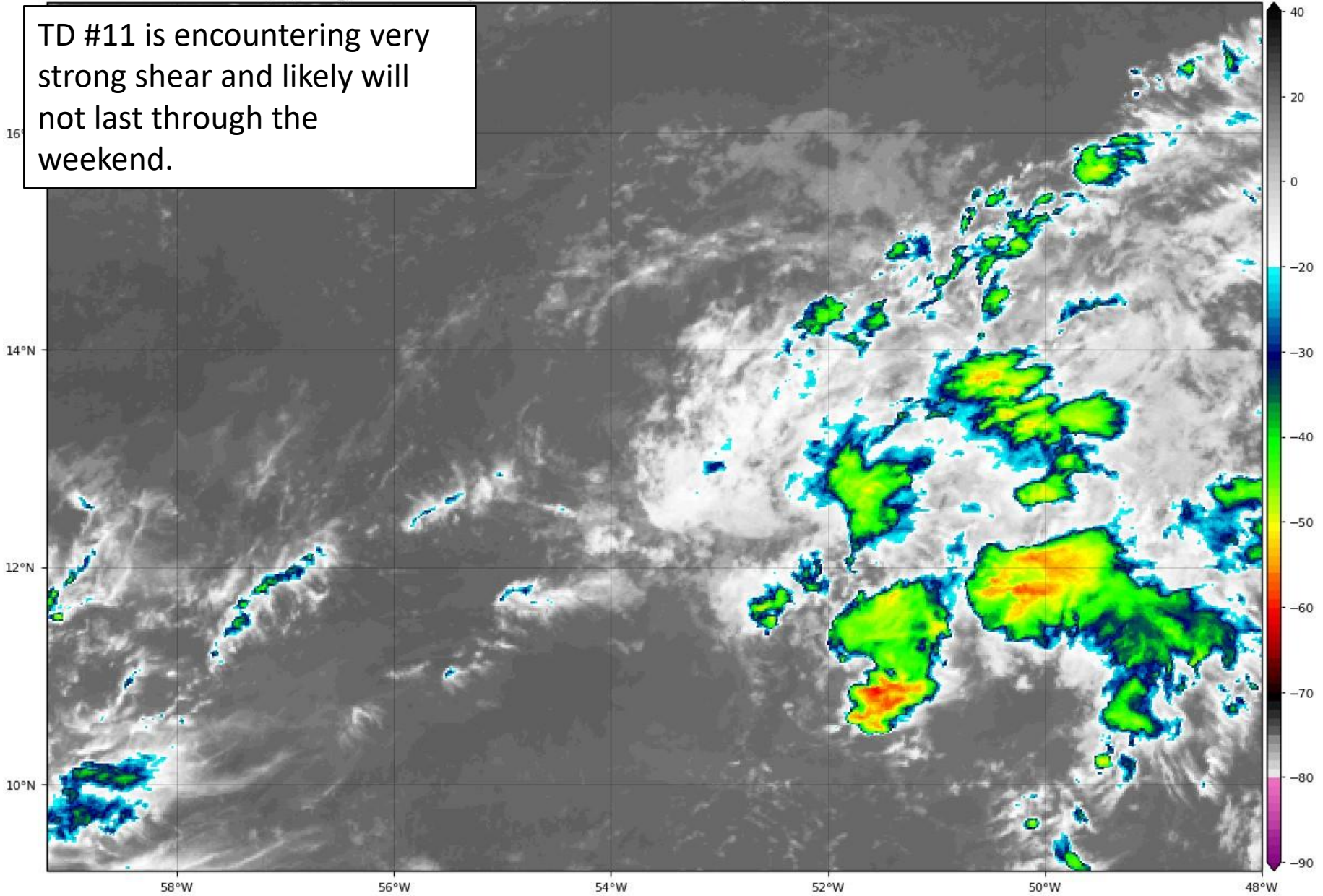
Shear Tendency (KTS) Over Past 24 Hours: Increasing — Decreasing ----

Tropical Depression #11 Satellite Image

GOES-16 Channel 13 (IR) Brightness Temperature (°C) at 13:50Z Sep 22, 2018

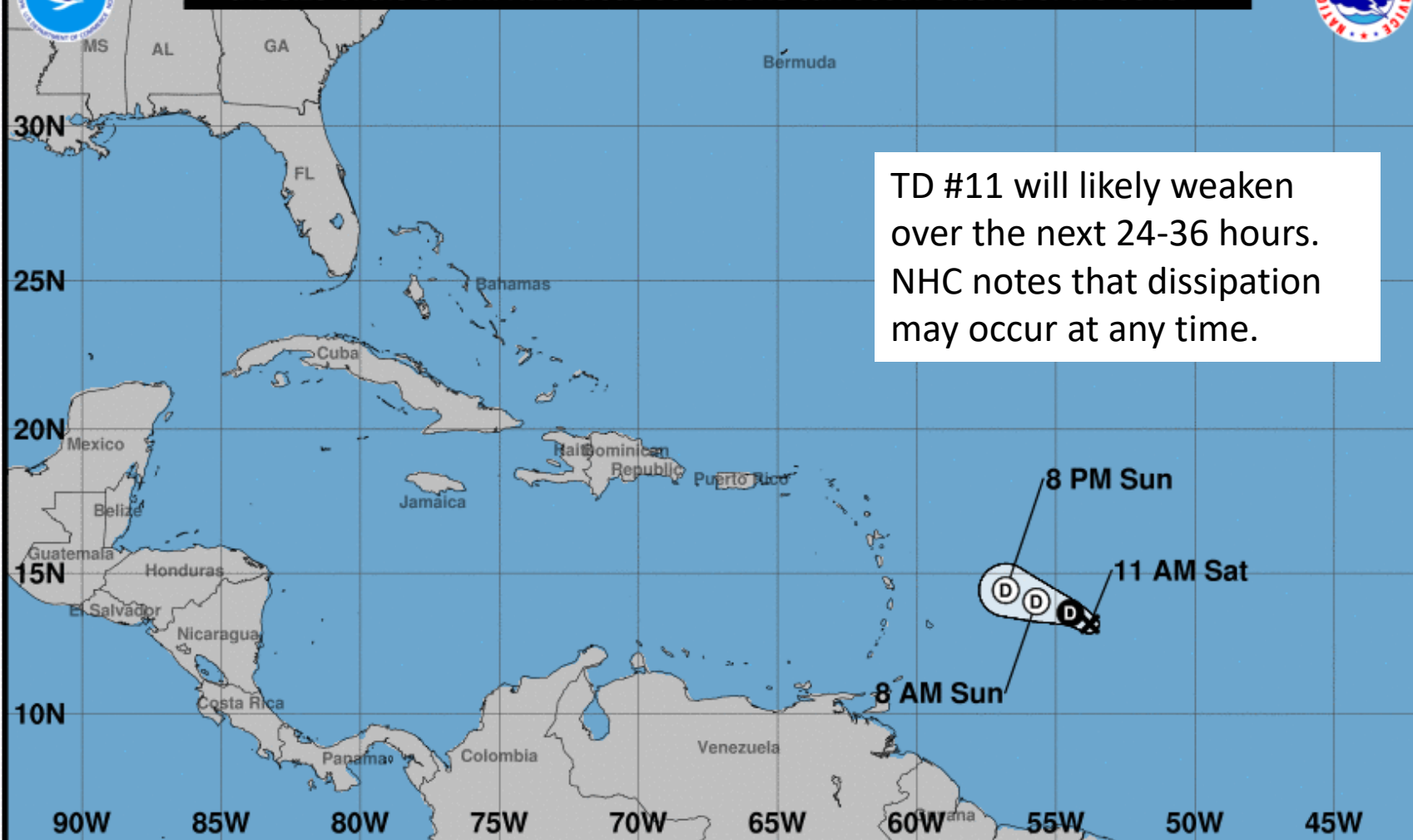
TROPICALTIDBITS.COM

TD #11 is encountering very strong shear and likely will not last through the weekend.





Note: The cone contains the probable path of the storm center but does not show the size of the storm. Hazardous conditions can occur outside of the cone.

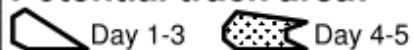


Tropical Depression Eleven
Saturday September 22, 2018
11 AM AST Advisory 3
NWS National Hurricane Center

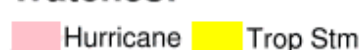
Current information: x
Center location 13.2 N 53.8 W
Maximum sustained wind 30 mph
Movement W at 3 mph

Forecast positions:
● Tropical Cyclone ○ Post/Potential TC
Sustained winds: D < 39 mph
S 39-73 mph H 74-110 mph M > 110 mph

Potential track area:



Watches:



Warnings:



Current wind extent:



Tropical Depression #11 Model Tracks

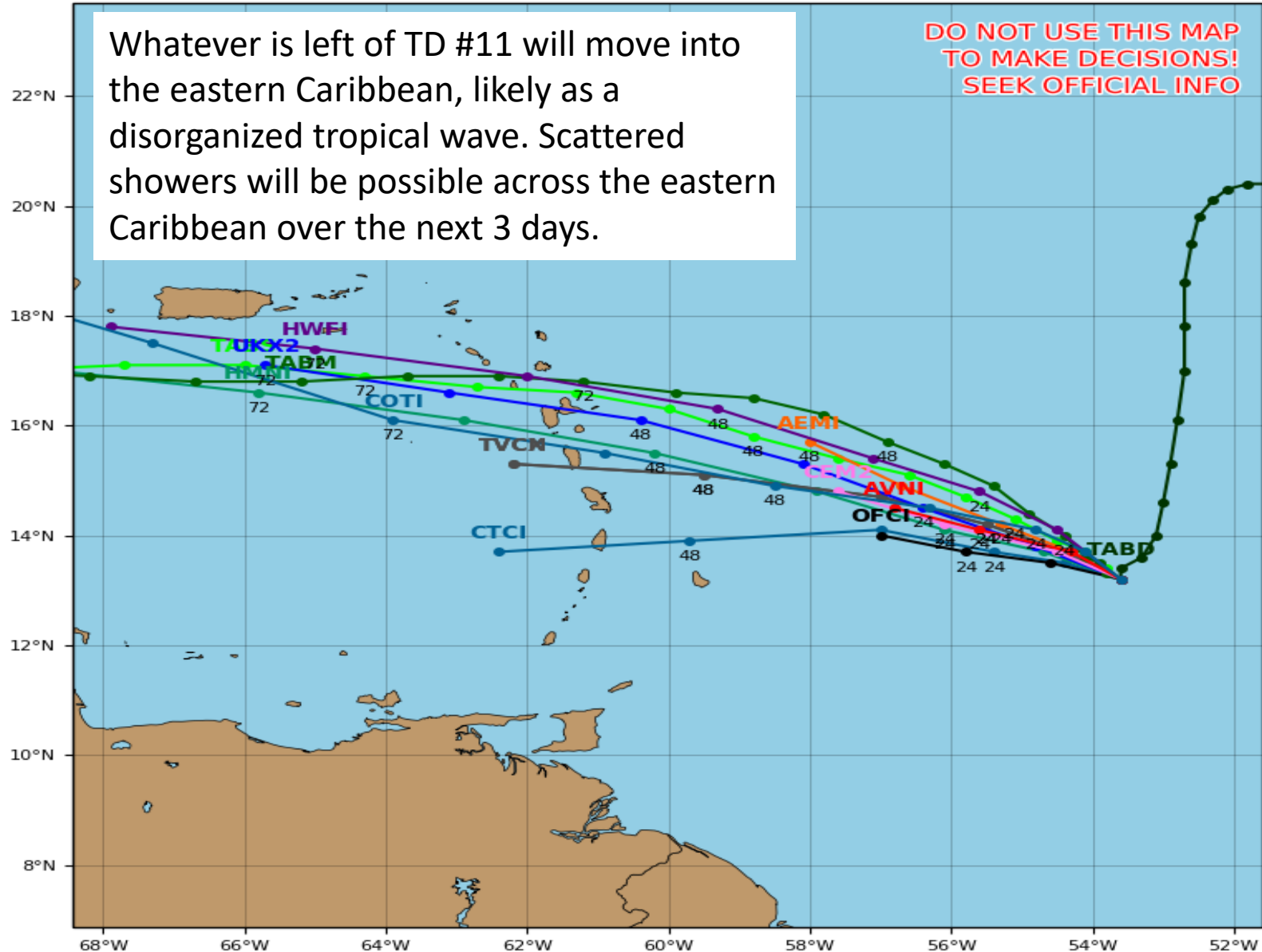
Tropical Depression 11L Model Track Guidance

Initialized at 12z Sep 22 2018

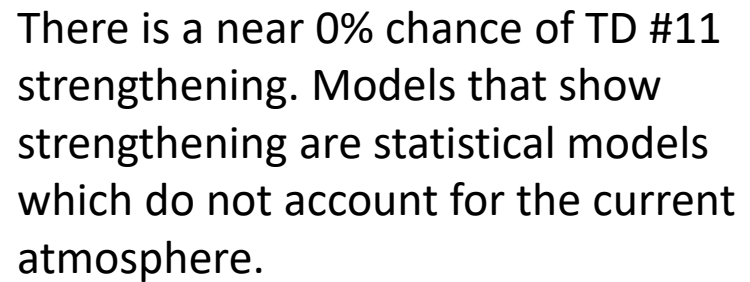
Levi Cowan - tropicaltidbits.com

Whatever is left of TD #11 will move into the eastern Caribbean, likely as a disorganized tropical wave. Scattered showers will be possible across the eastern Caribbean over the next 3 days.

DO NOT USE THIS MAP
TO MAKE DECISIONS!
SEEK OFFICIAL INFO



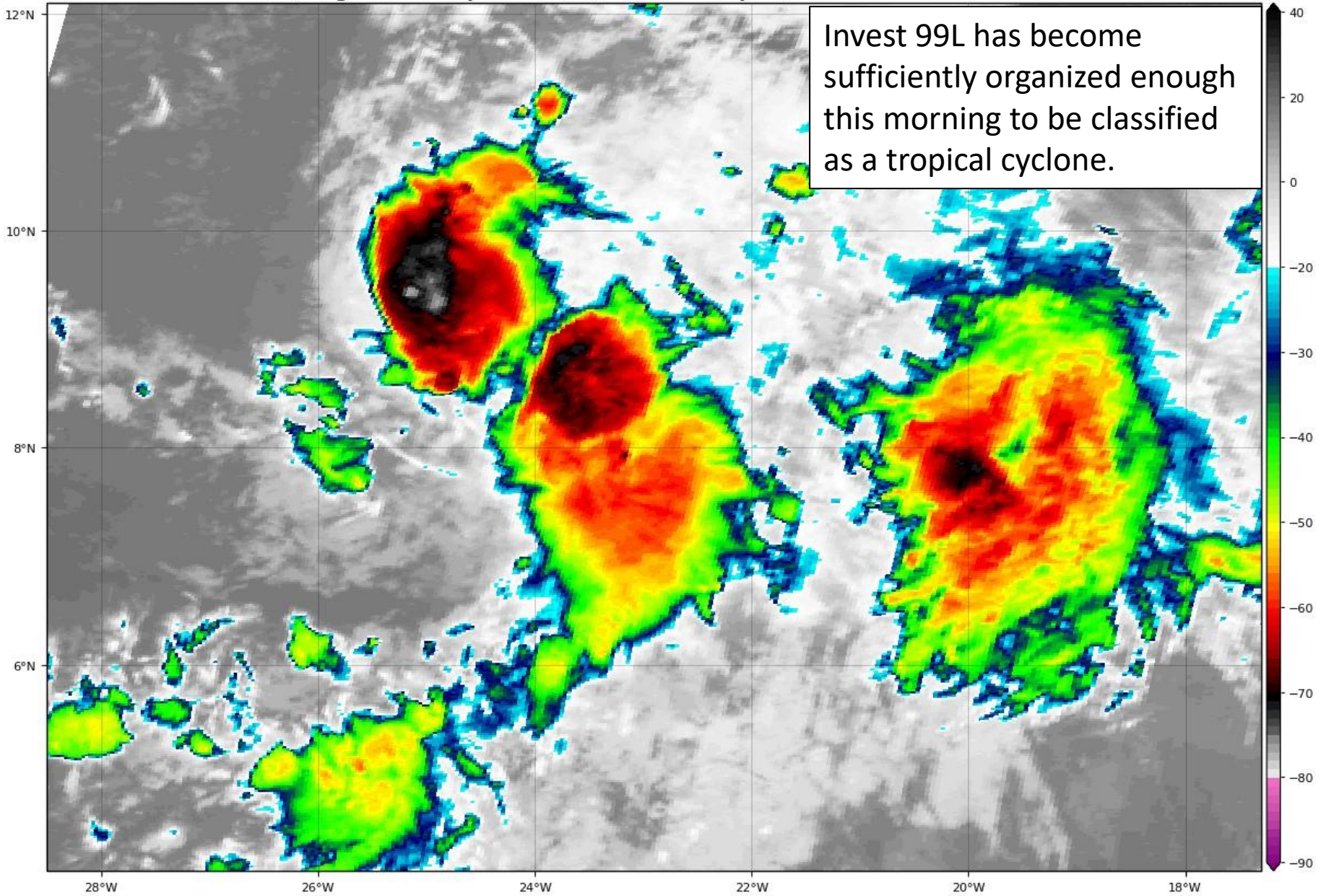
Levi Cowan - tropicaltidbits.com



Tropical Storm Kirk Satellite Image

GOES-16 Channel 13 (IR) Brightness Temperature (°C) at 14:05Z Sep 22, 2018

TROPICALTIDBITS.COM

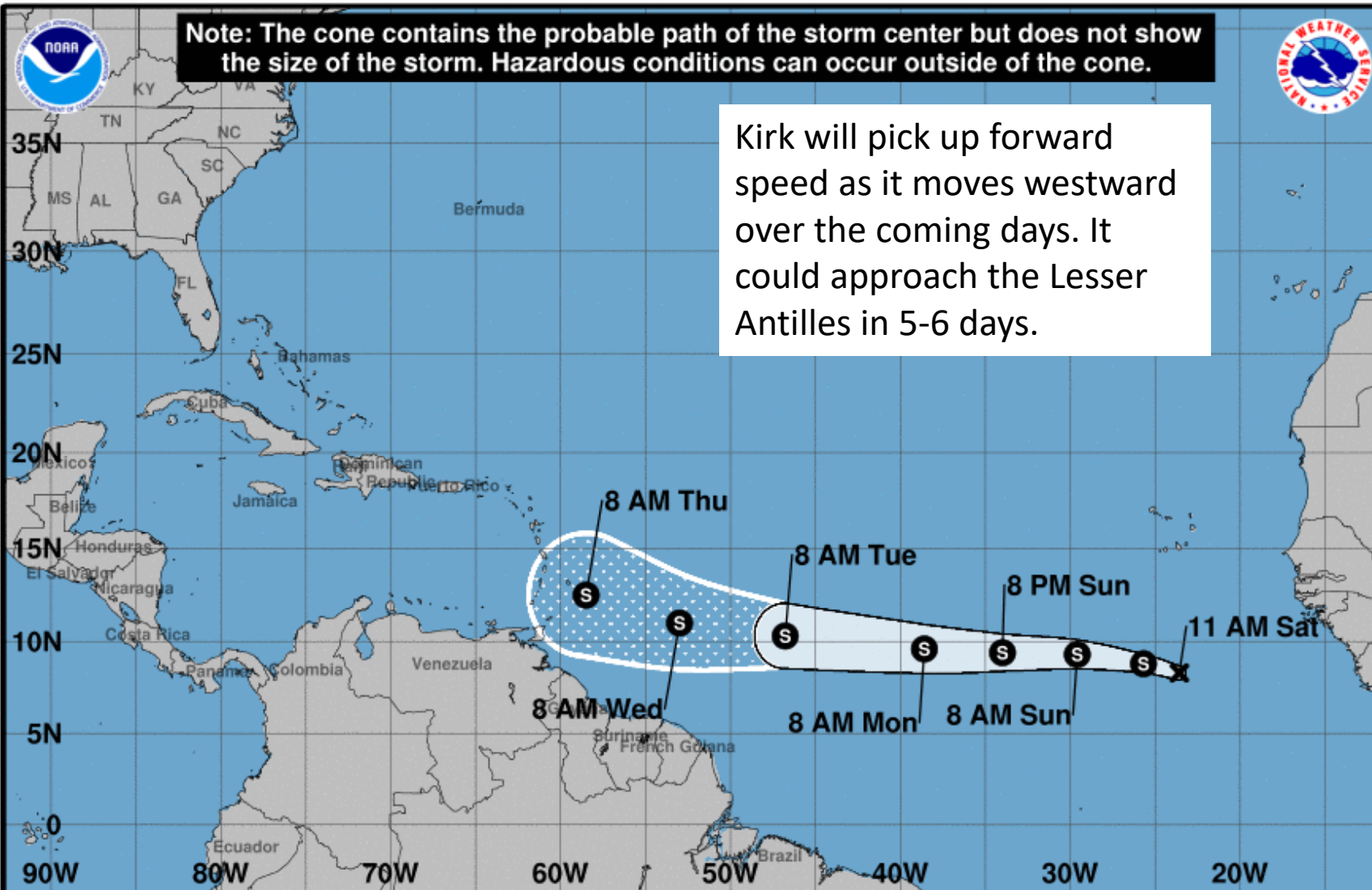




Note: The cone contains the probable path of the storm center but does not show the size of the storm. Hazardous conditions can occur outside of the cone.



Kirk will pick up forward speed as it moves westward over the coming days. It could approach the Lesser Antilles in 5-6 days.



Tropical Storm Kirk

Saturday September 22, 2018

11 AM AST Advisory 1

NWS National Hurricane Center

Current information: x

Center location 8.3 N 23.6 W

Maximum sustained wind 40 mph

Movement W at 14 mph

Forecast positions:

● Tropical Cyclone ○ Post/Potential TC

Sustained winds: D < 39 mph

S 39-73 mph H 74-110 mph M > 110 mph

Potential track area:

Day 1-3 Day 4-5

Watches:

Hurricane Trop Stm

Warnings:

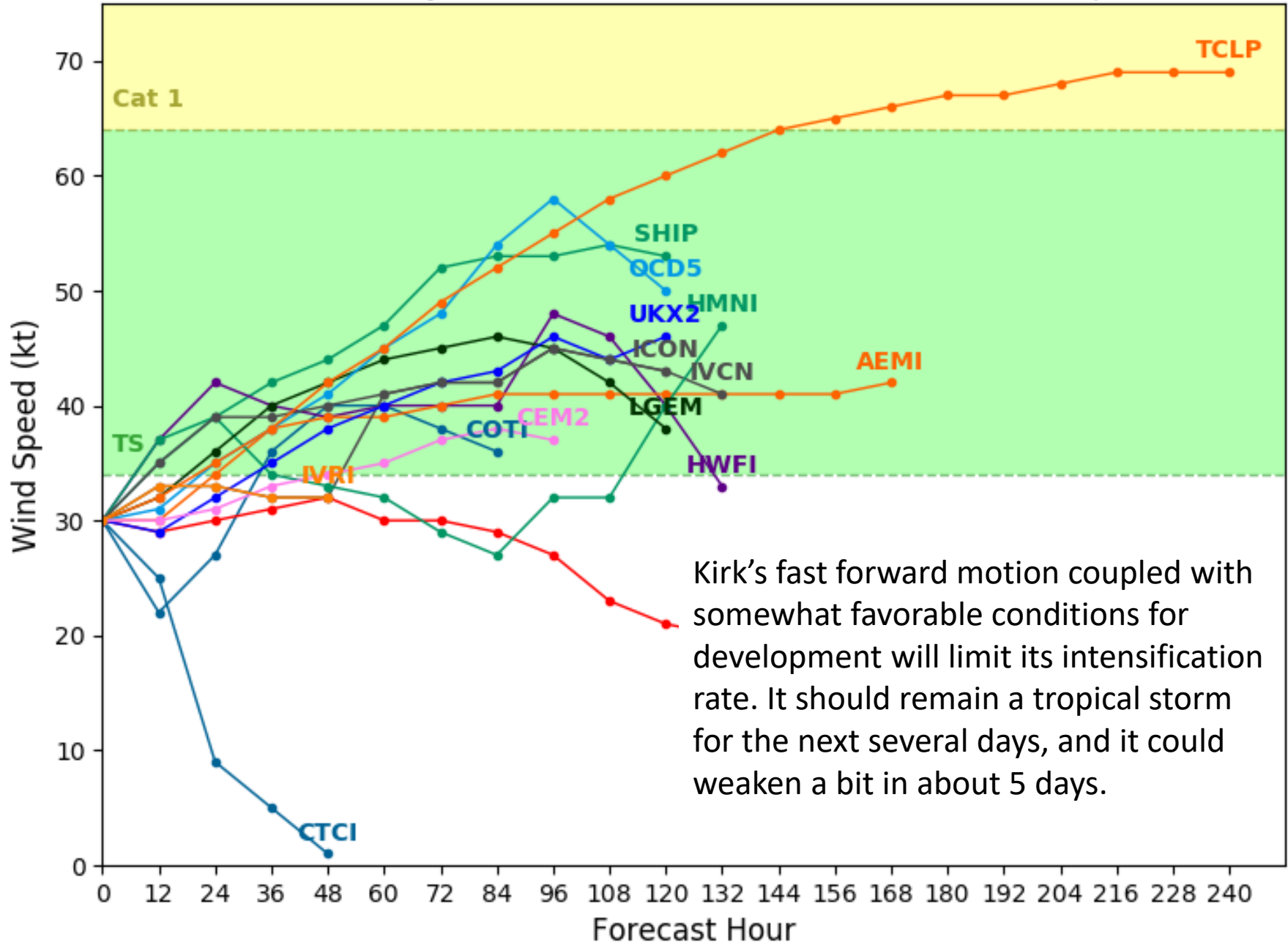
Hurricane Trop Stm

Current wind extent:

Hurricane Trop Stm

Initialized at 12z Sep 22 2018

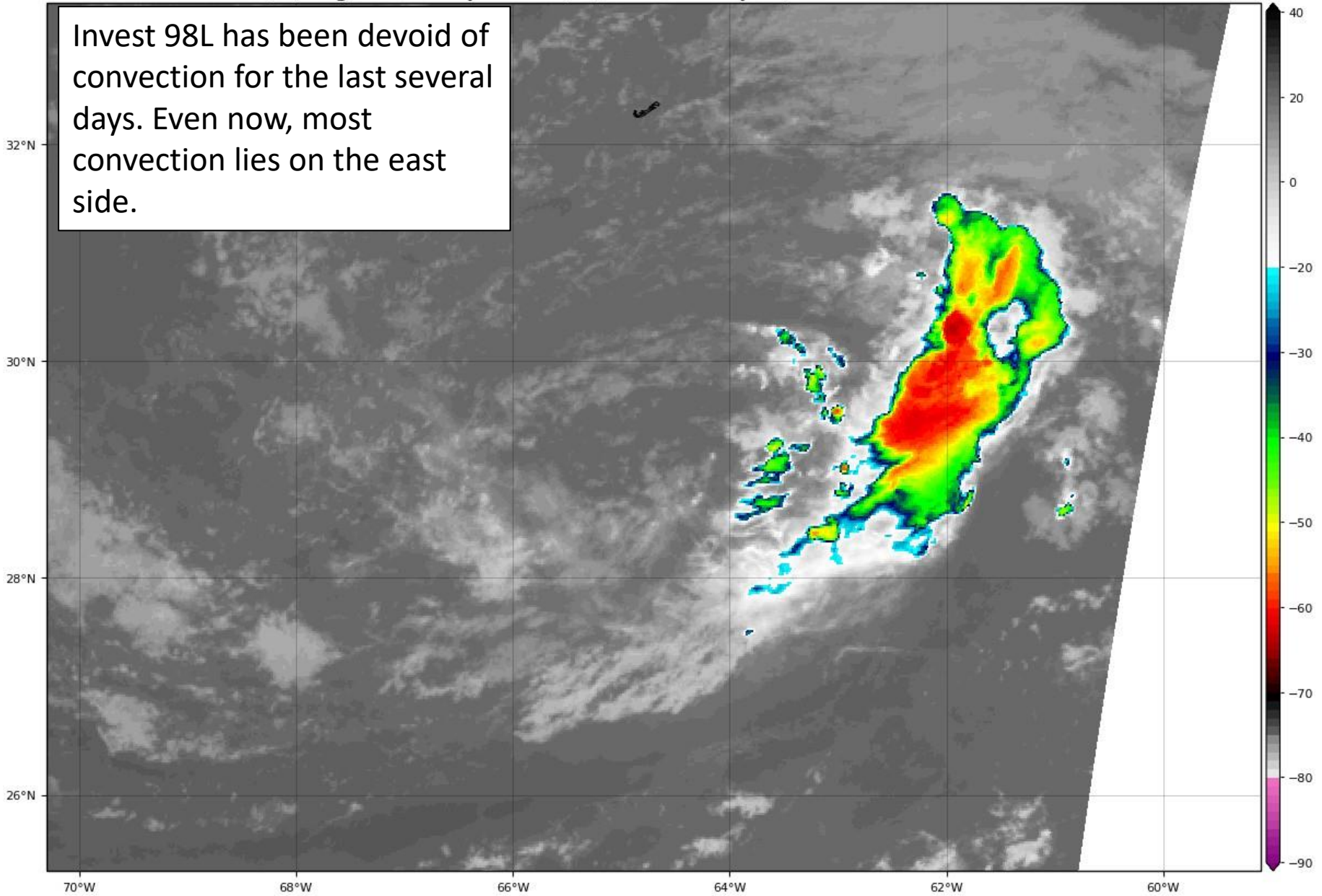
Levi Cowan - tropicaltidbits.com



Invest 98L Satellite Image

GOES-16 Channel 13 (IR) Brightness Temperature (°C) at 14:28Z Sep 22, 2018

TROPICALTIDBITS.COM





Five-Day Graphical Tropical Weather Outlook

National Hurricane Center Miami, Florida

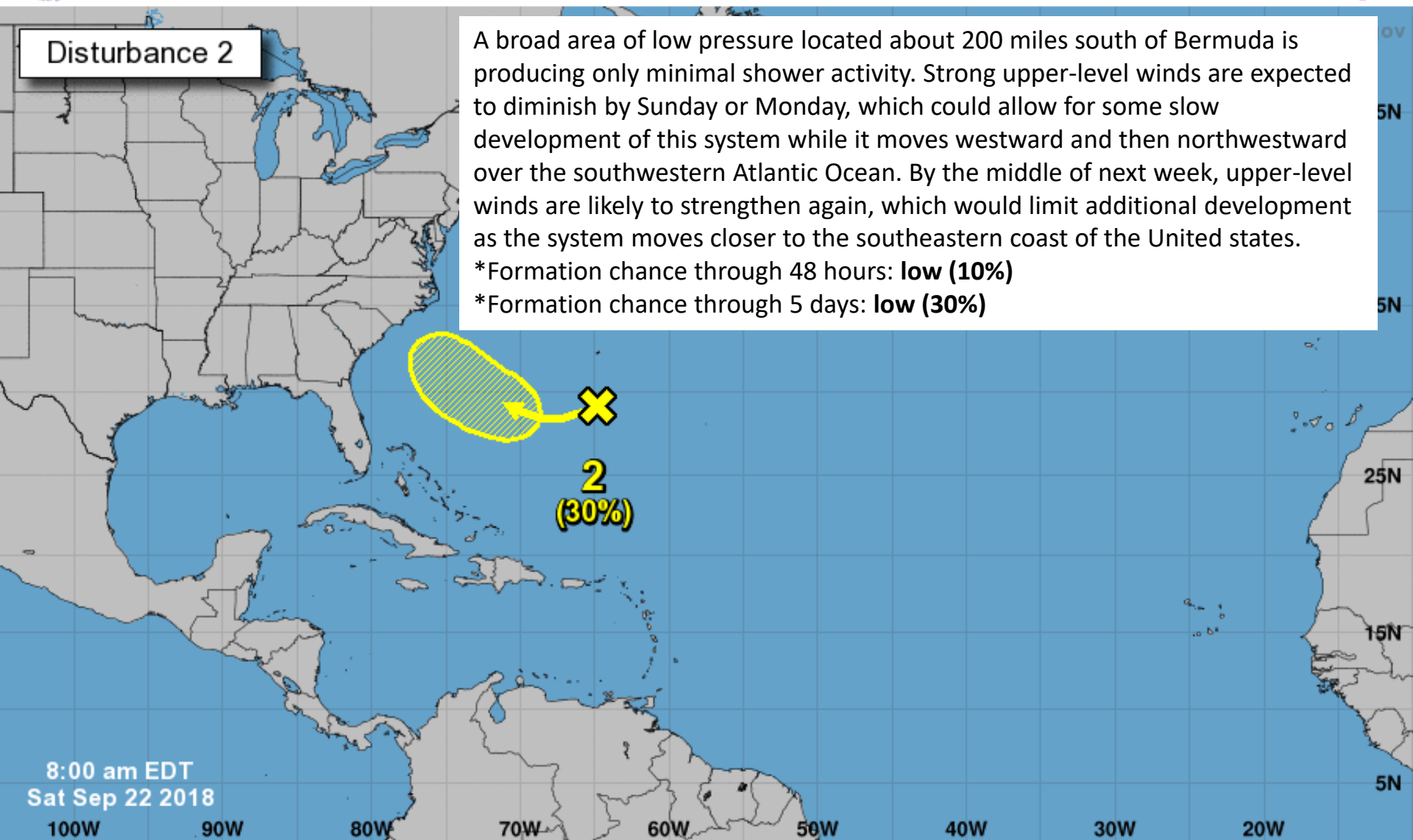


Disturbance 2

A broad area of low pressure located about 200 miles south of Bermuda is producing only minimal shower activity. Strong upper-level winds are expected to diminish by Sunday or Monday, which could allow for some slow development of this system while it moves westward and then northwestward over the southwestern Atlantic Ocean. By the middle of next week, upper-level winds are likely to strengthen again, which would limit additional development as the system moves closer to the southeastern coast of the United States.

*Formation chance through 48 hours: **low (10%)**

*Formation chance through 5 days: **low (30%)**



8:00 am EDT
Sat Sep 22 2018

Current Disturbances and Five-Day Cyclone Formation Chance: < 40% 40-60% > 60%

Tropical or Sub-Tropical Cyclone: Depression Storm Hurricane

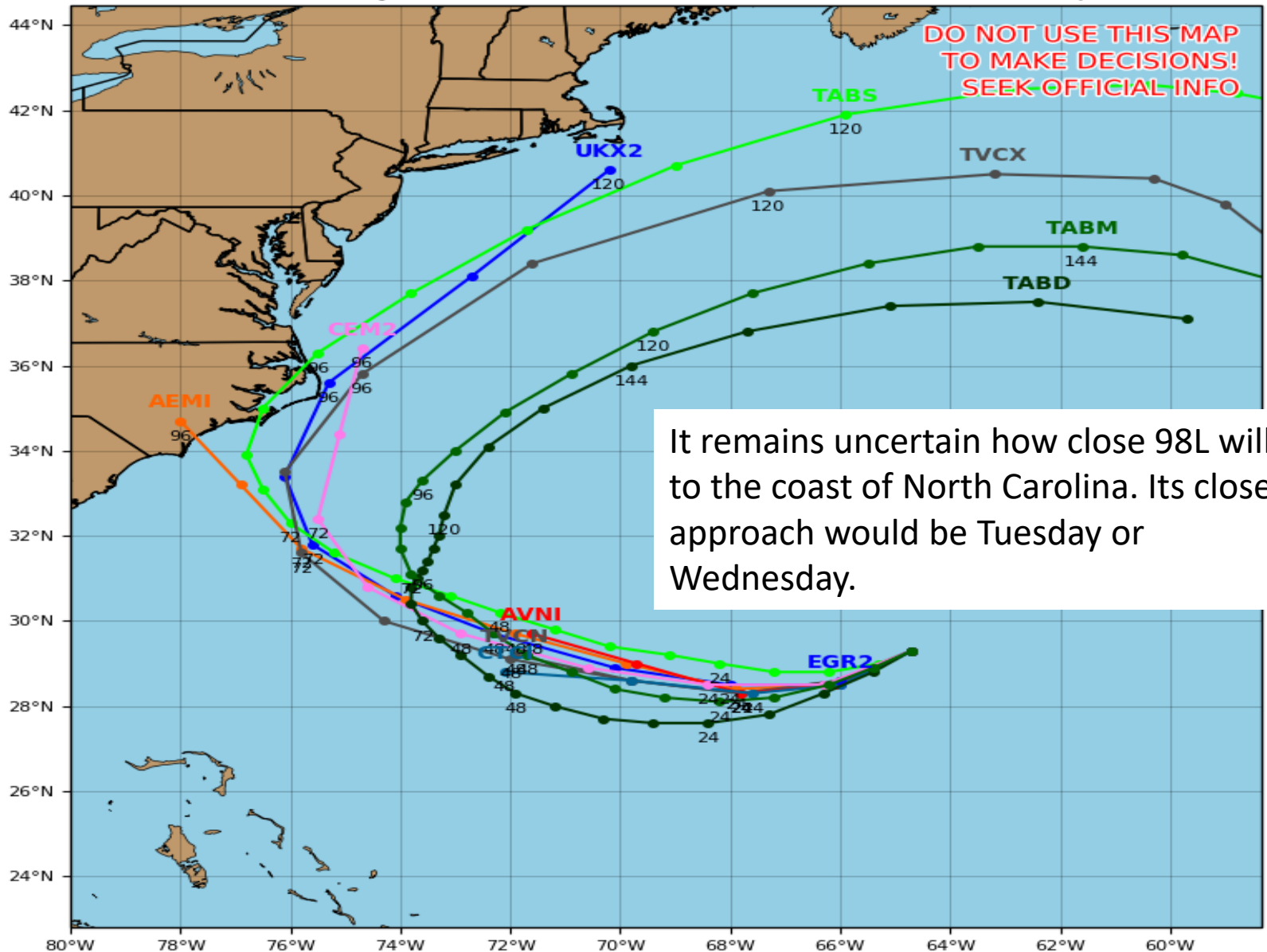
Post-Tropical Cyclone or Remnants

Invest 98L Model Tracks

Invest 98L Model Track Guidance

Initialized at 12z Sep 22 2018

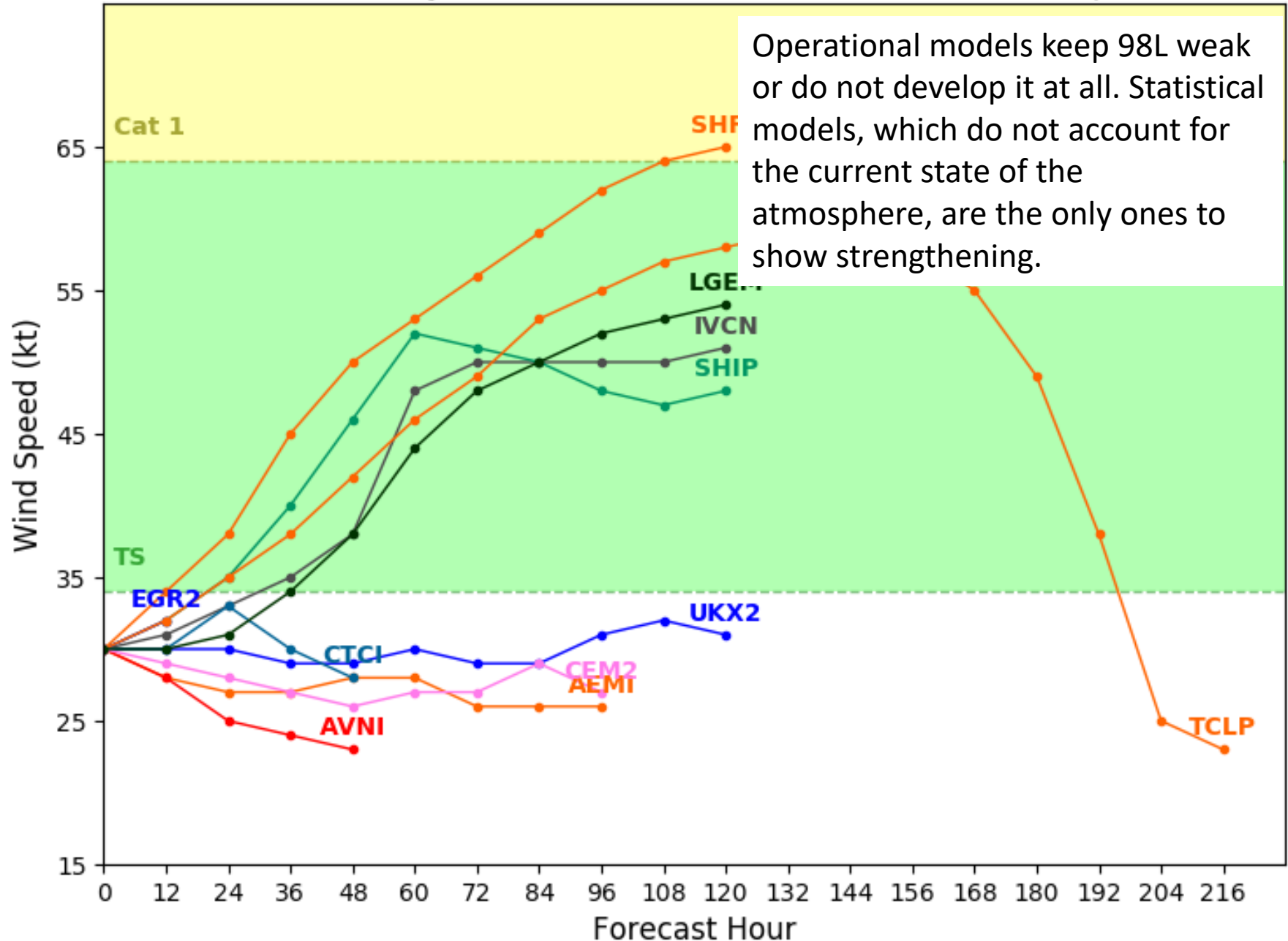
Levi Cowan - tropicaltidbits.com



Invest 98L Model Intensity Guidance

Initialized at 12z Sep 22 2018

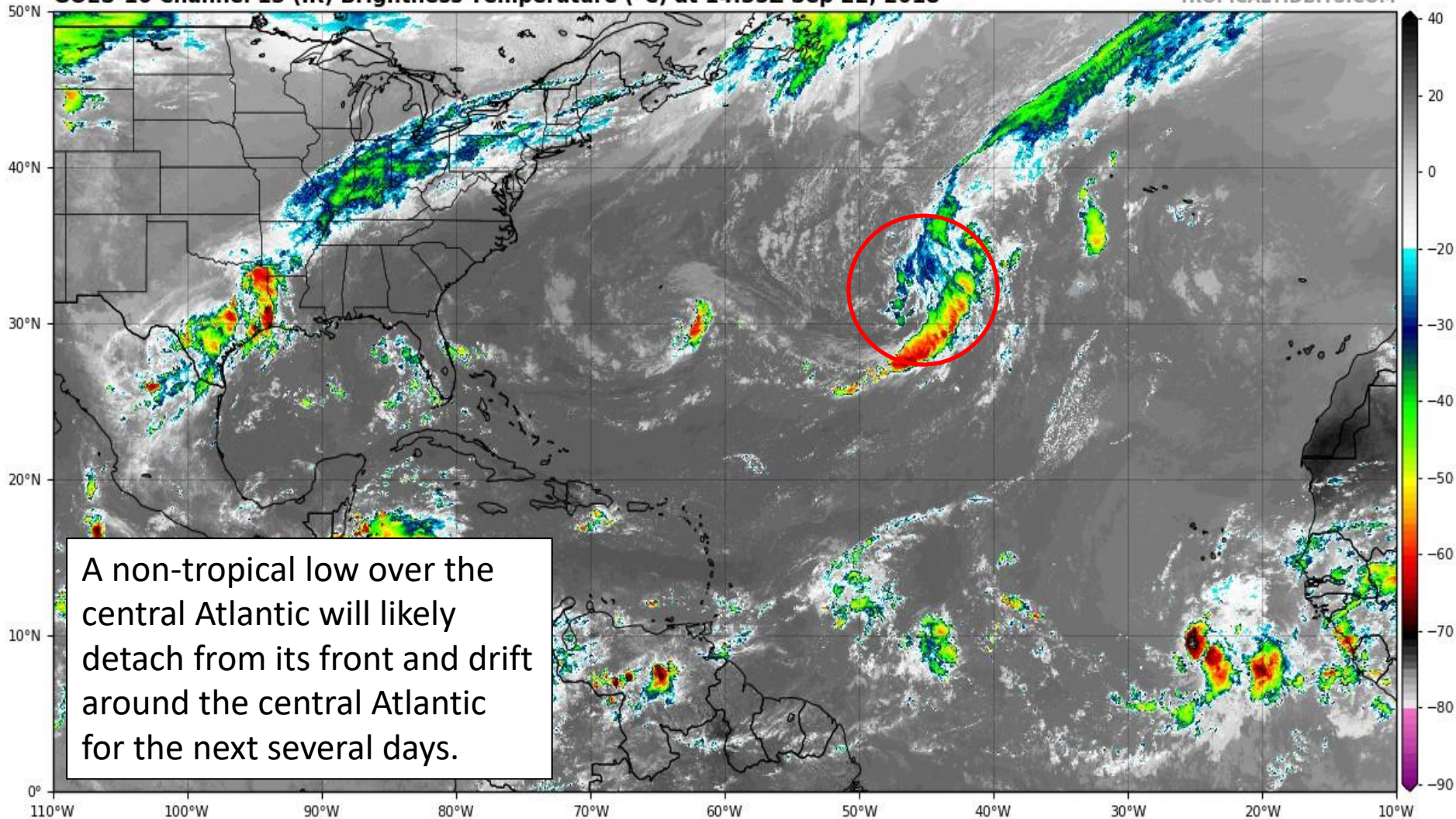
Levi Cowan - tropicaltidbits.com



Central Atlantic Low Satellite Image

GOES-16 Channel 13 (IR) Brightness Temperature (°C) at 14:35Z Sep 22, 2018

TROPICALTIDBITS.COM





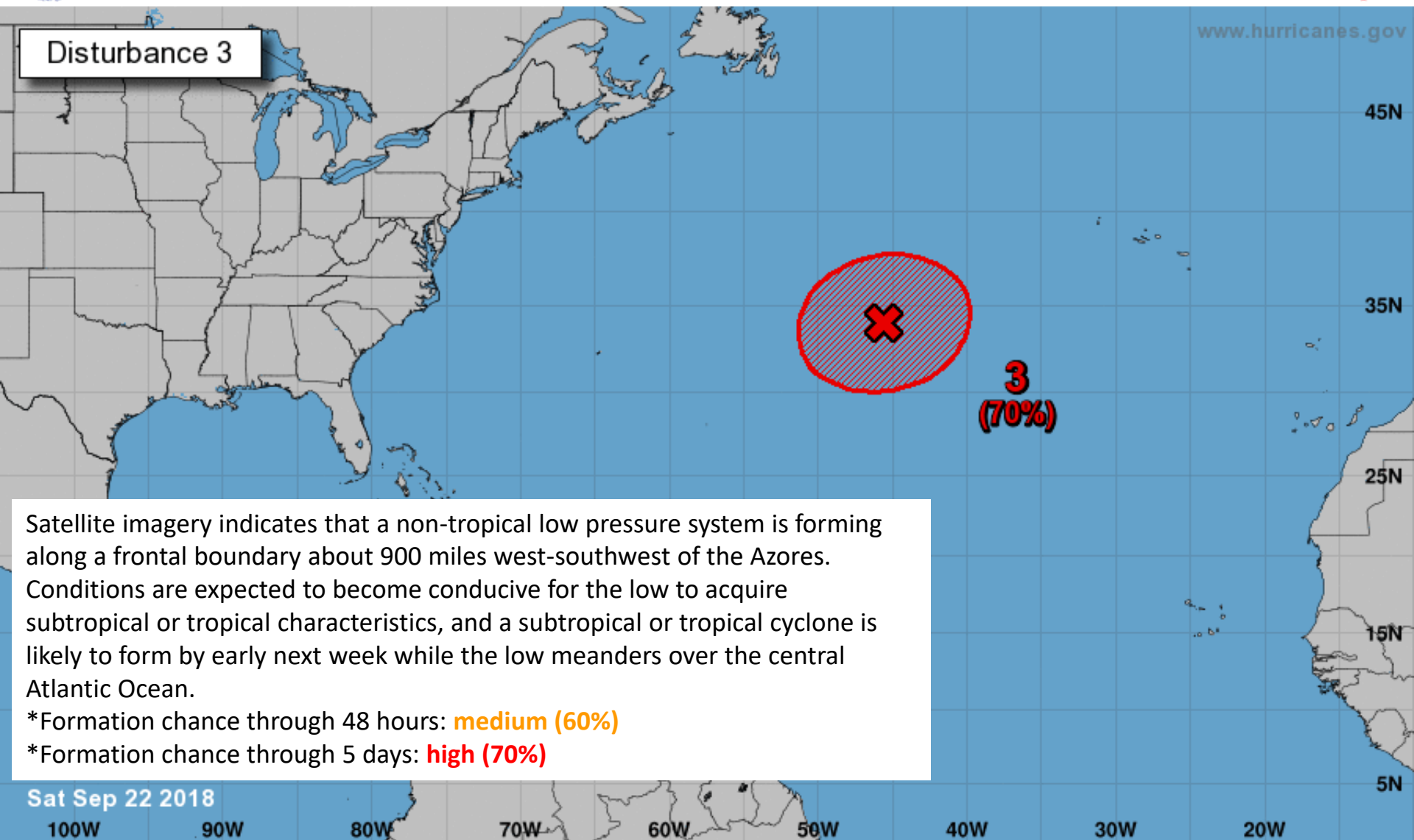
Five-Day Graphical Tropical Weather Outlook

National Hurricane Center Miami, Florida



www.hurricanes.gov

Disturbance 3



Current Disturbances and Five-Day Cyclone Formation Chance: < 40% 40-60% > 60%

Tropical or Sub-Tropical Cyclone: Depression Storm Hurricane

Post-Tropical Cyclone or Remnants

Summary

Tropical Depression #11:

- At 11 AM EDT Saturday, TD #11 was located 485 miles east of the Windward Islands with maximum sustained winds of 30 mph.
- Dissipation is likely to occur within the next 24-36 hours.

Tropical Storm Kirk:

- At 11 AM EDT Saturday, Kirk was located about 450 miles south of the Cabo Verde Islands with maximum sustained winds of 40 mph.
- Kirk is moving westward at 14 mph, and an increase in forward speed is expected over the next few days.
- Kirk's fast motion combined with somewhat favorable conditions for development will likely limit Kirk's intensification rate over the coming days.
- Kirk could approach the Lesser Antilles in about 5 to 6 days. The forecast beyond that time is uncertain.

Invest 98L:

- An area of low pressure devoid of thunderstorms located 200 miles south of Bermuda could develop over the coming days, but will likely remain weak.
- The low pressure area will move west then northwest, possibly approaching the North Carolina coast Tuesday or Wednesday.
- The NHC gives this system a 10% chance of formation during the next 2 days and a 30% chance in the next 5 days.

Central Atlantic Low:

- A non-tropical area of low pressure will break off from its front and wander across the central Atlantic for the next several days. It poses no threat to land.
- The NHC gives this system a 60% chance of formation during the next 2 days and a 70% chance in the next 5 days.

Florida Outlook:

- No impacts to Florida are expected at this time from any of these systems.

The next tropics packet will be sent out late Sunday morning. For the latest information on the tropics, please visit the National Hurricane Center website at www.hurricanes.gov.



TROPICAL UPDATE

Created by:

Cameron Young, Assistant State Meteorologist

Cameron.Young@em.myflorida.com

State Meteorological Support Unit

Florida Division of Emergency
Management

Users wishing to subscribe (approval pending) to this distribution list, register at https://public.govdelivery.com/accounts/FLDEM/subscriber/new?topic_id=SERT_Met_Tropics.

Other reports available for subscription are available at

<https://public.govdelivery.com/accounts/FLDEM/subscriber/new?preferences=true>