



TROPICAL UPDATE

11 AM EDT

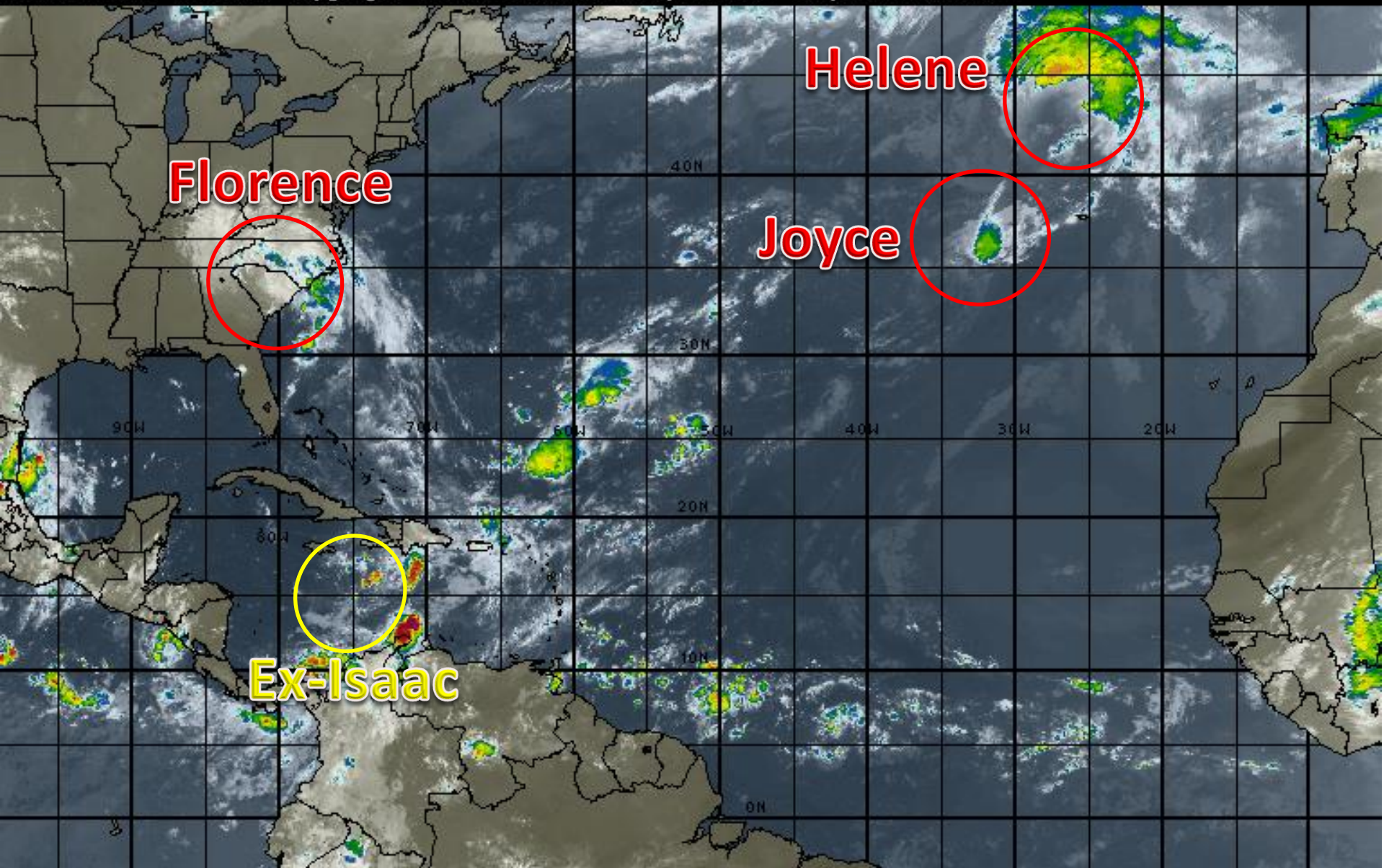
Sunday, September 16, 2018

**Tropical Depression Florence, Post-Tropical
Cyclone Helene, Tropical Depression Joyce, &
Remnants of Isaac (20%)**

This update is intended for government and emergency response officials, and is provided for informational and situational awareness purposes only. Forecast conditions are subject to change based on a variety of environmental factors. For additional information, or for any life safety concerns with an active weather event please contact your County Emergency Management or Public Safety Office, local National Weather Service forecast office or visit the National Hurricane Center website at www.nhc.noaa.gov.

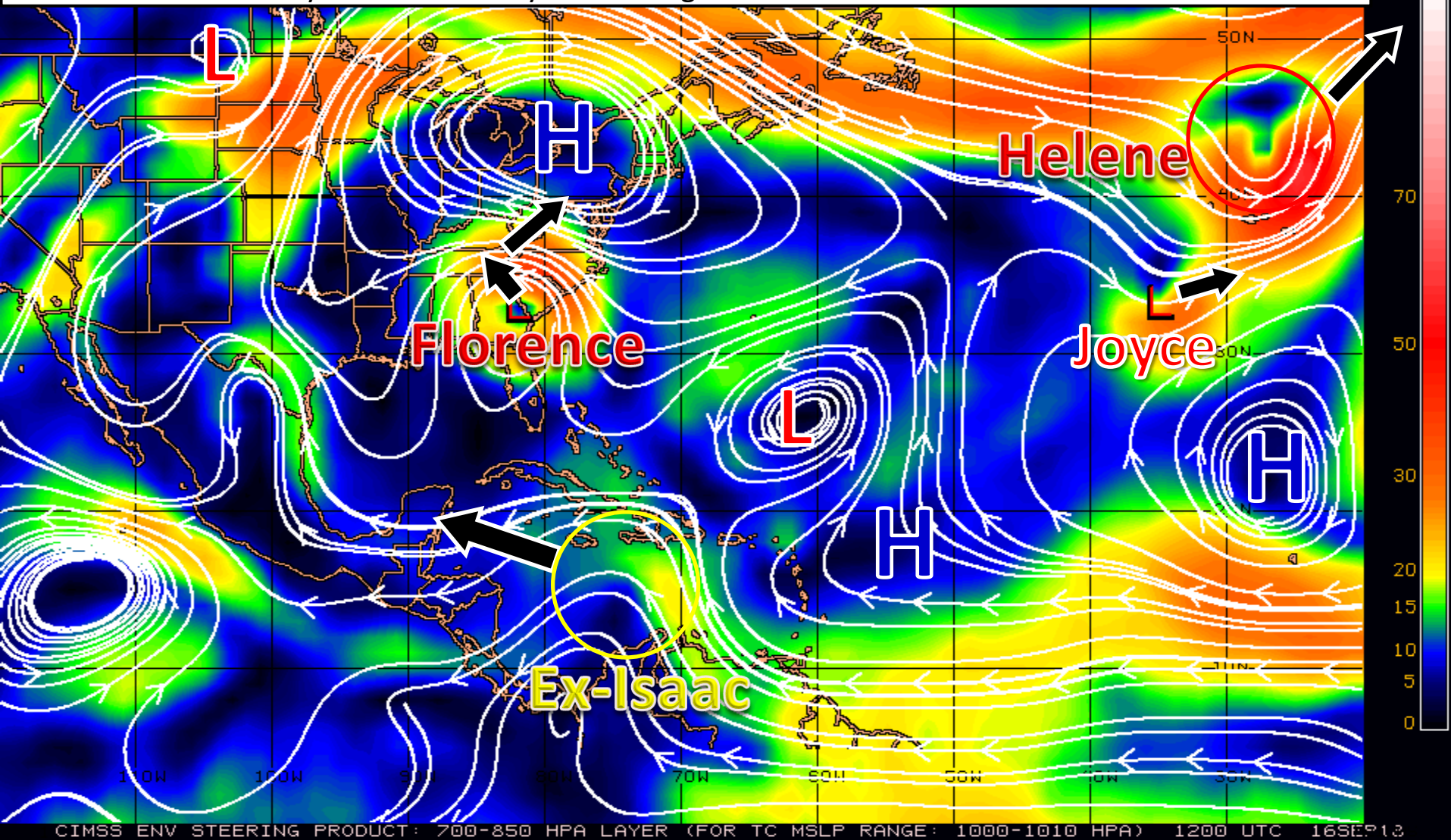
Atlantic Basin Satellite Image

12:00 16-SEP-2018 GMT Copyright © 1998-2018 MSI Corporation <http://www.wsi.com>



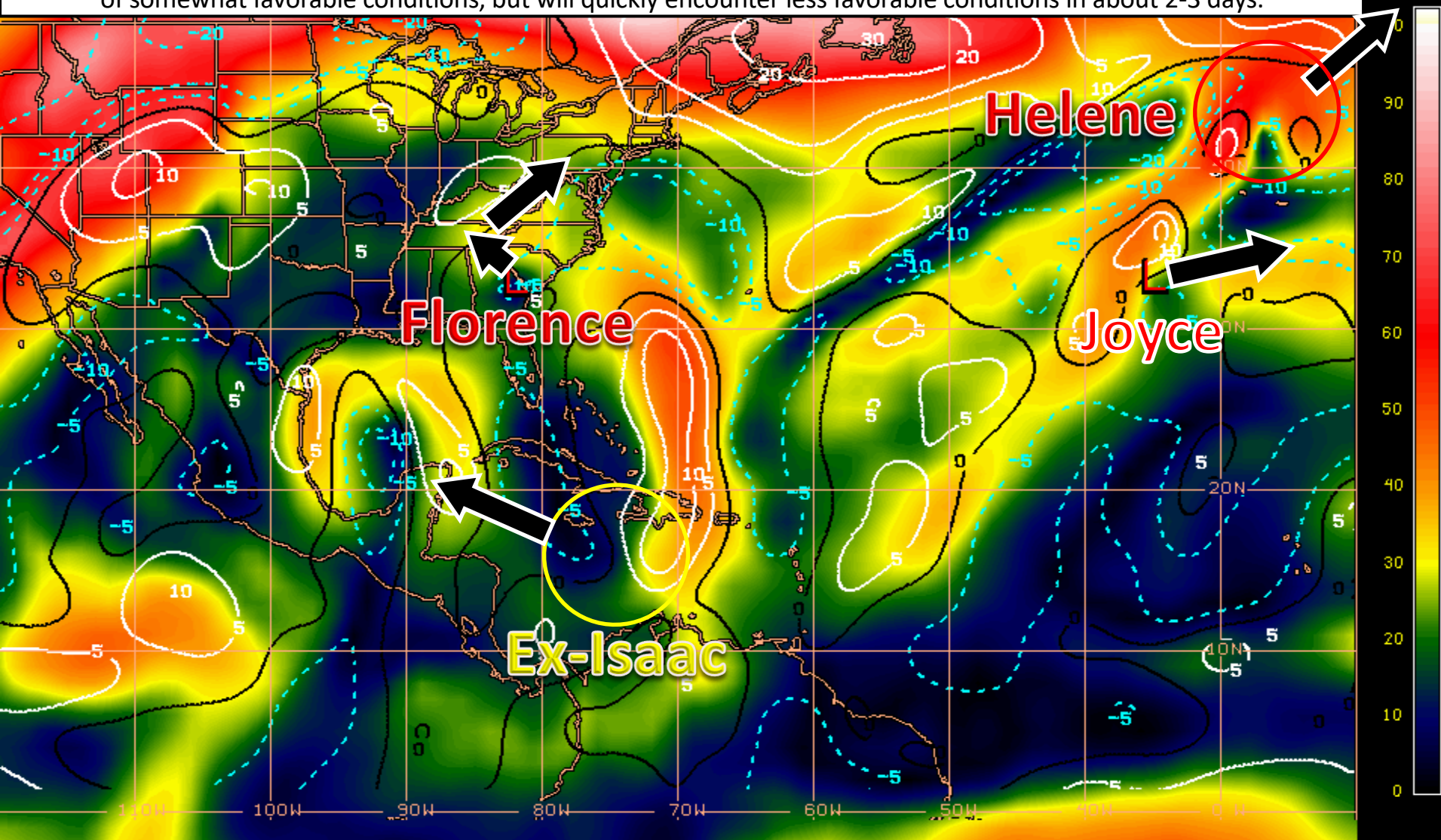
Steering Currents

While high pressure has been steering Florence for the last several days, a low pressure system and associated cold front currently over the northern Plains will sweep Florence off toward the northeast by Monday. Ex-Isaac will be moving west-northwestward toward the western Caribbean over the coming days. Helene and Joyce are being steered east or northeastward.



Wind Shear (shaded) and Wind Shear Tendencies (contoured)

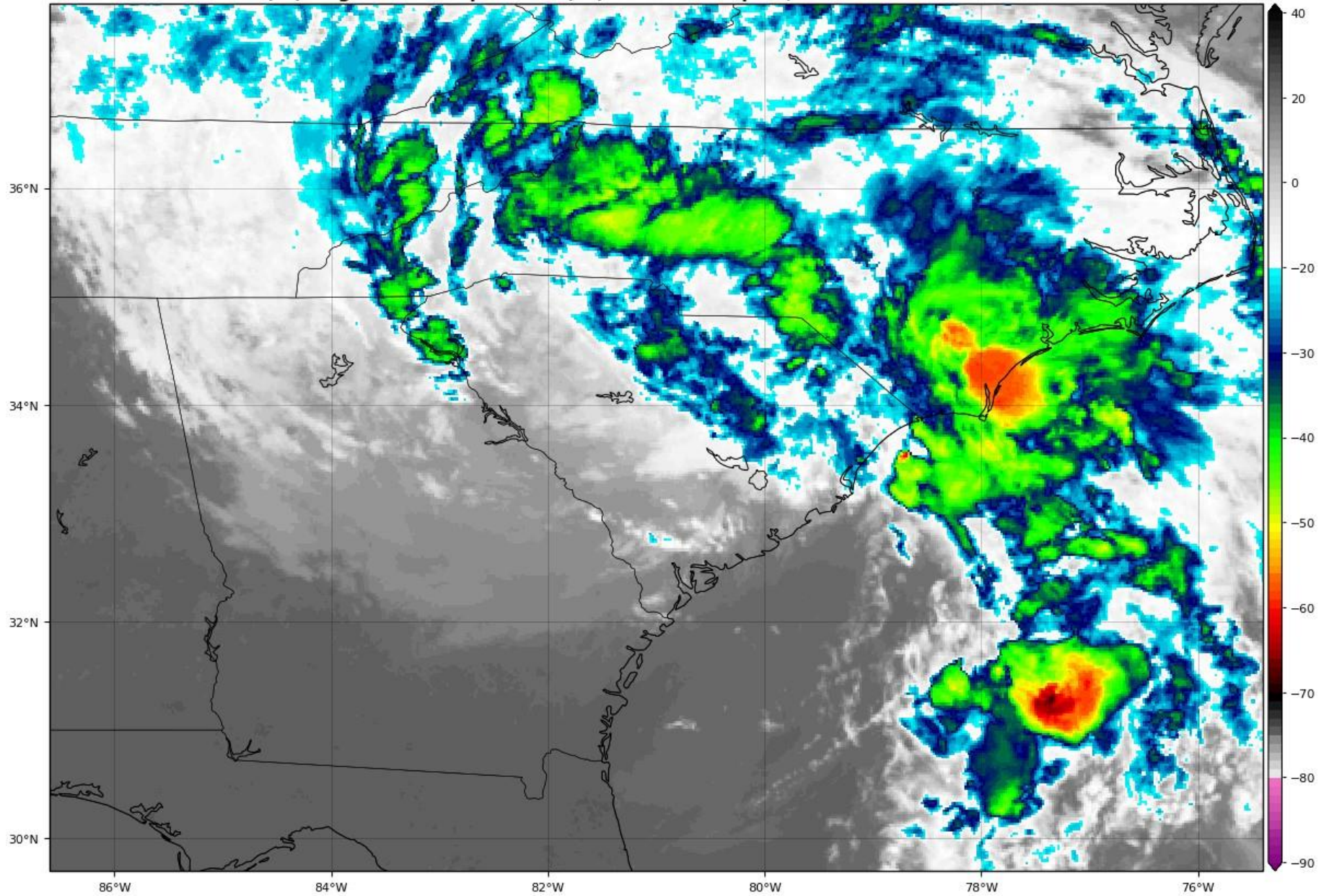
Florence is inland over South Carolina, and will be merging with a front, becoming post-tropical in about a day or two. Helene is becoming extratropical. Joyce is struggling against the wind shear and colder waters. Ex-Isaac has a small pocket of somewhat favorable conditions, but will quickly encounter less favorable conditions in about 2-3 days.



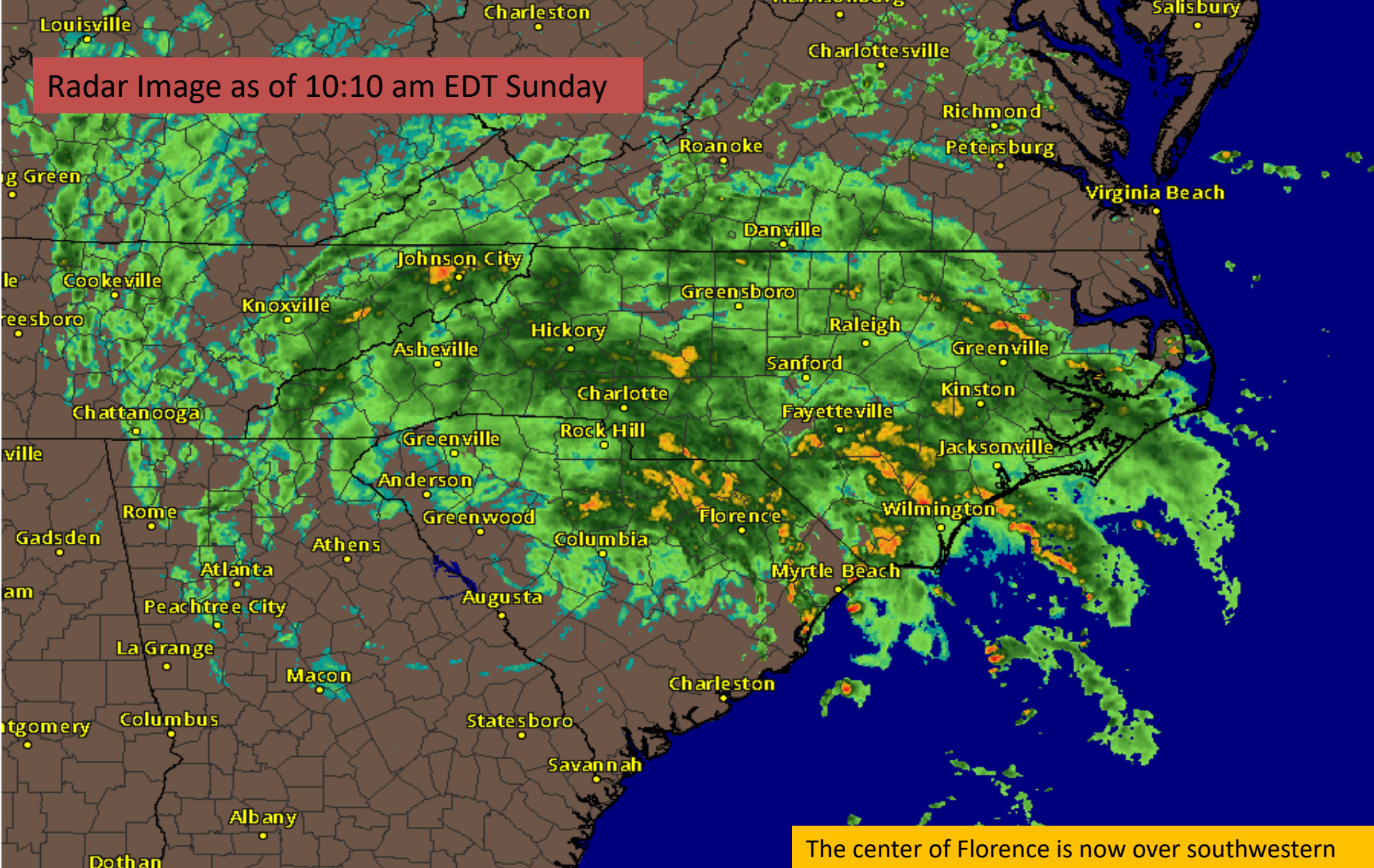
Tropical Depression Florence Satellite

GOES-16 Channel 13 (IR) Brightness Temperature (°C) at 14:03Z Sep 16, 2018

TROPICALTIDBITS.COM



Radar Image as of 10:10 am EDT Sunday



The center of Florence is now over southwestern South Carolina, moving westward. Outer bands continue to produce prolific rainfall and the possibility of tornadoes. Florence's center will likely move into western North Carolina or eastern Tennessee tonight into Monday morning.

5 10 15 20 25 30 35 40 45 50 55 60 65 70 75 dbZ



Light

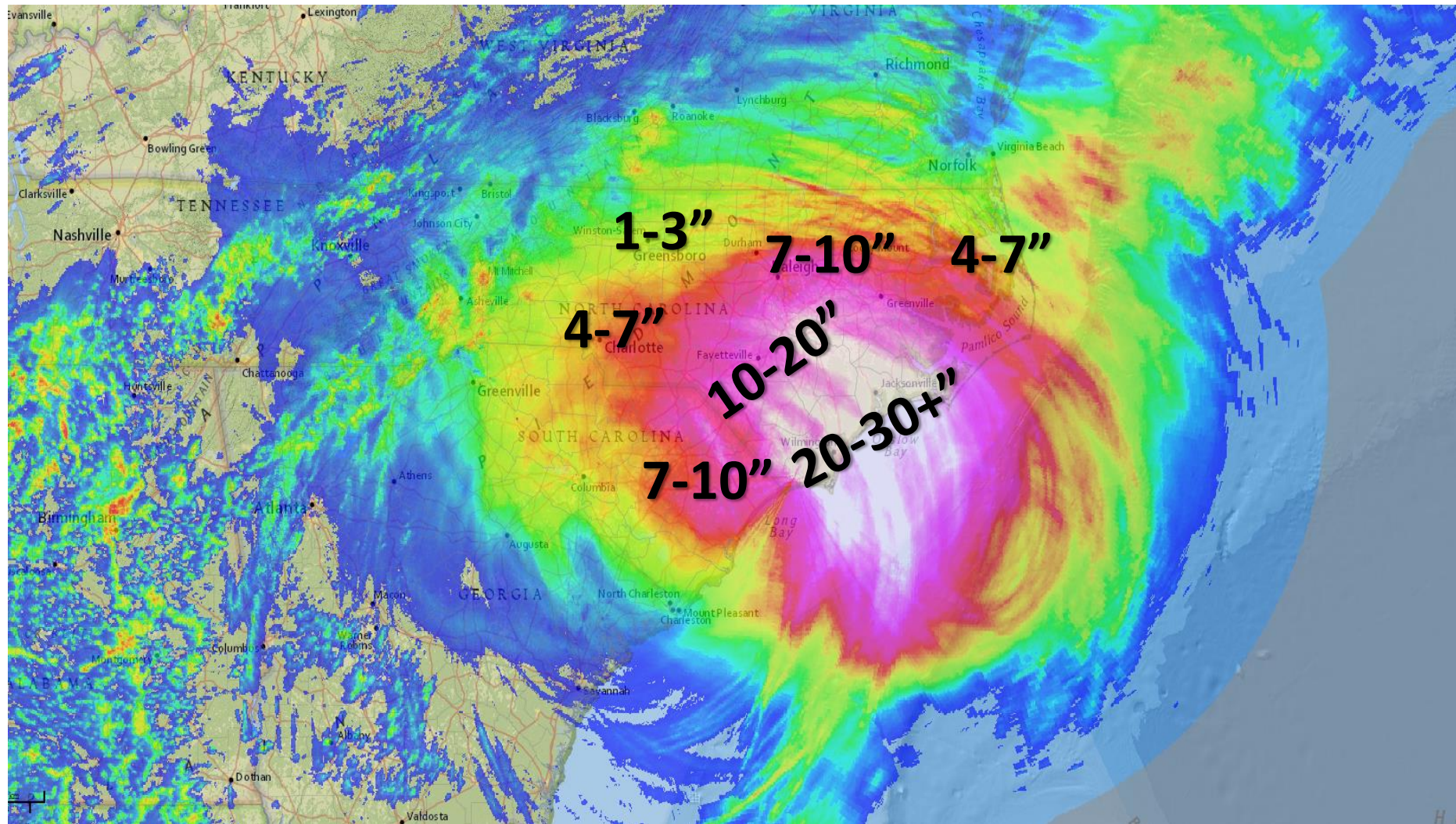
Moderate

Heavy

Severe

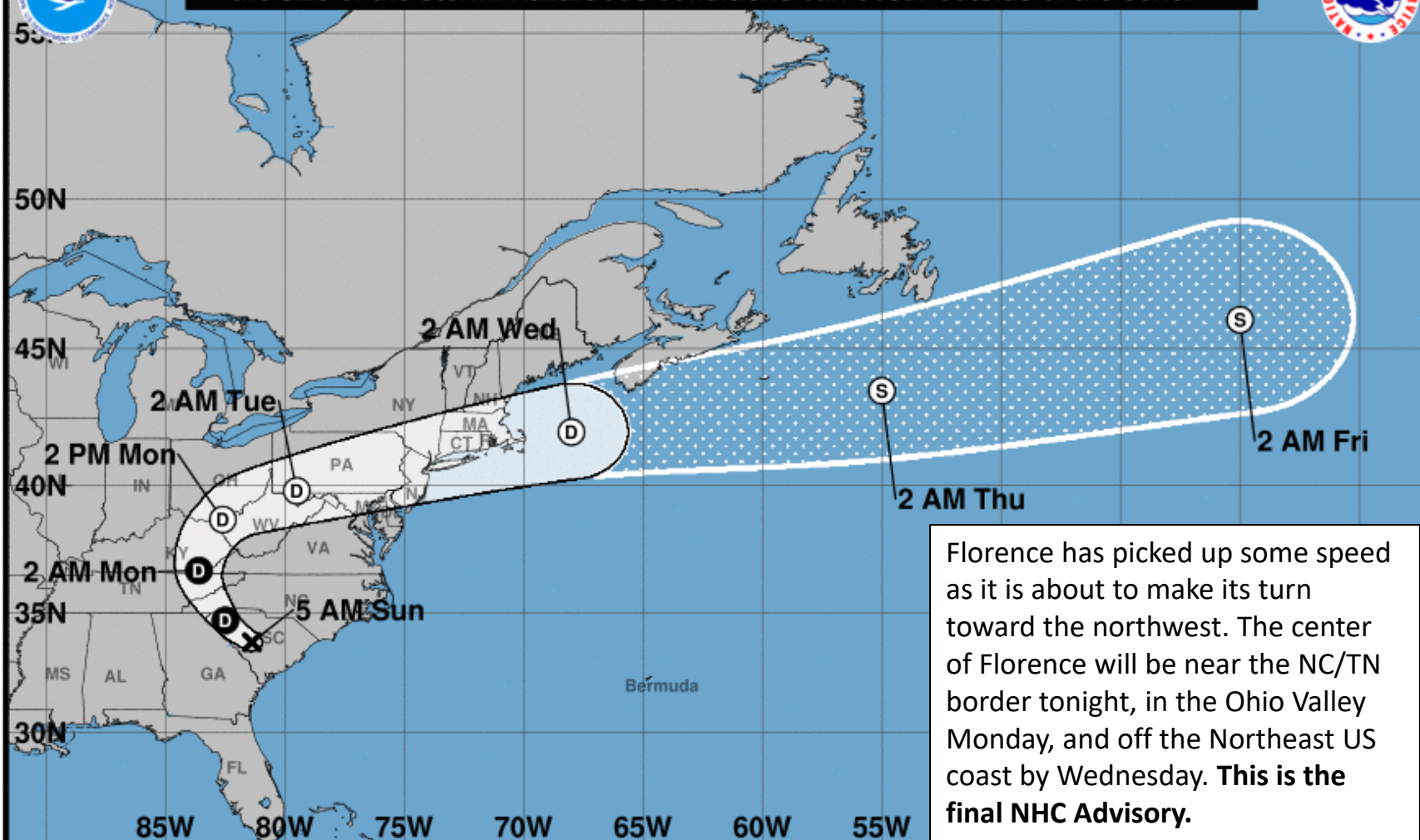
RAIN

Radar Estimated Rainfall – Past 72 hours





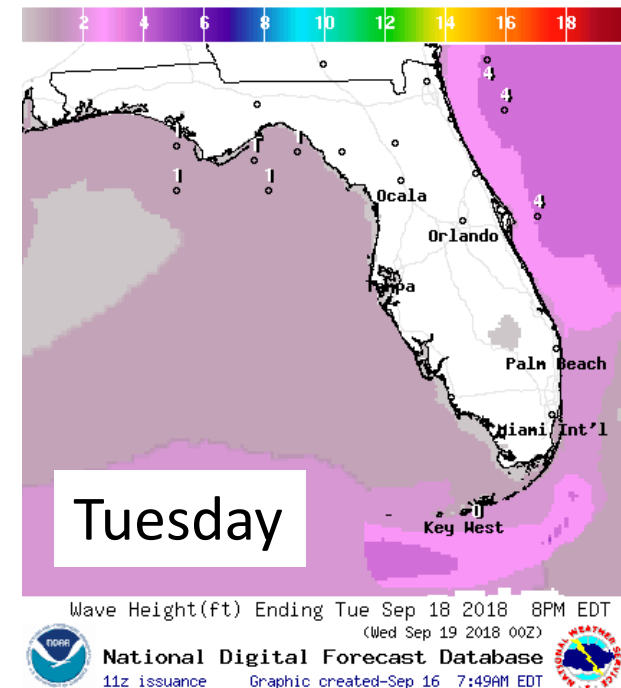
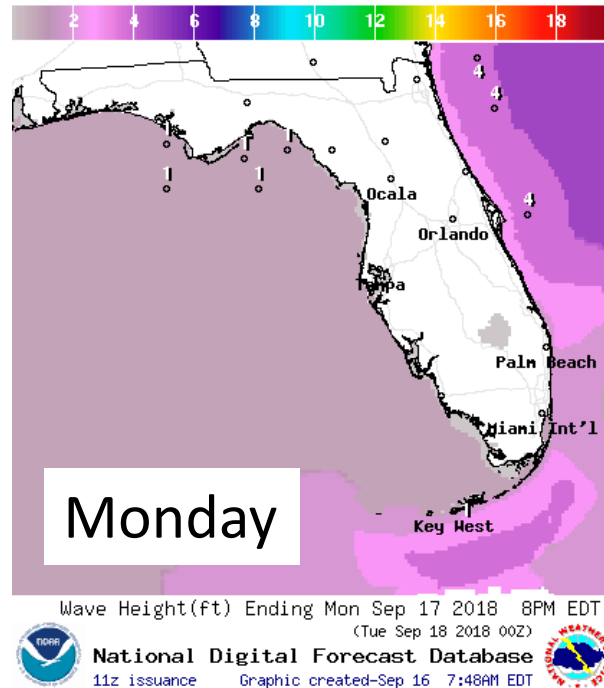
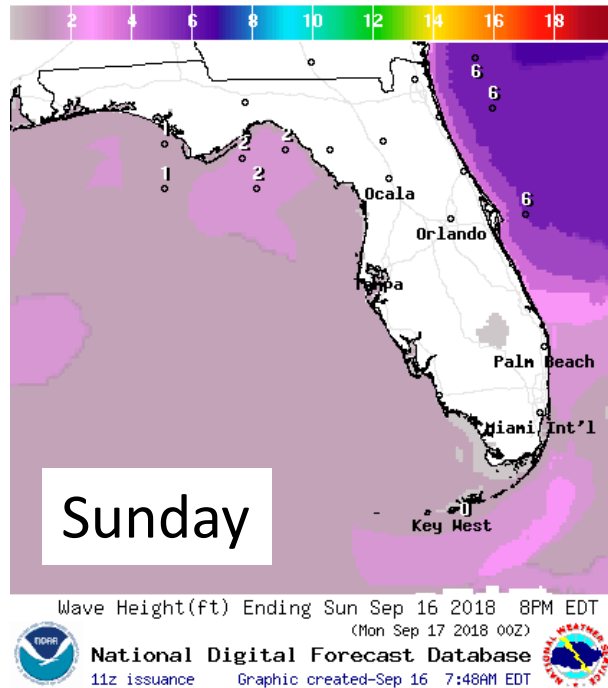
Note: The cone contains the probable path of the storm center but does not show the size of the storm. Hazardous conditions can occur outside of the cone.



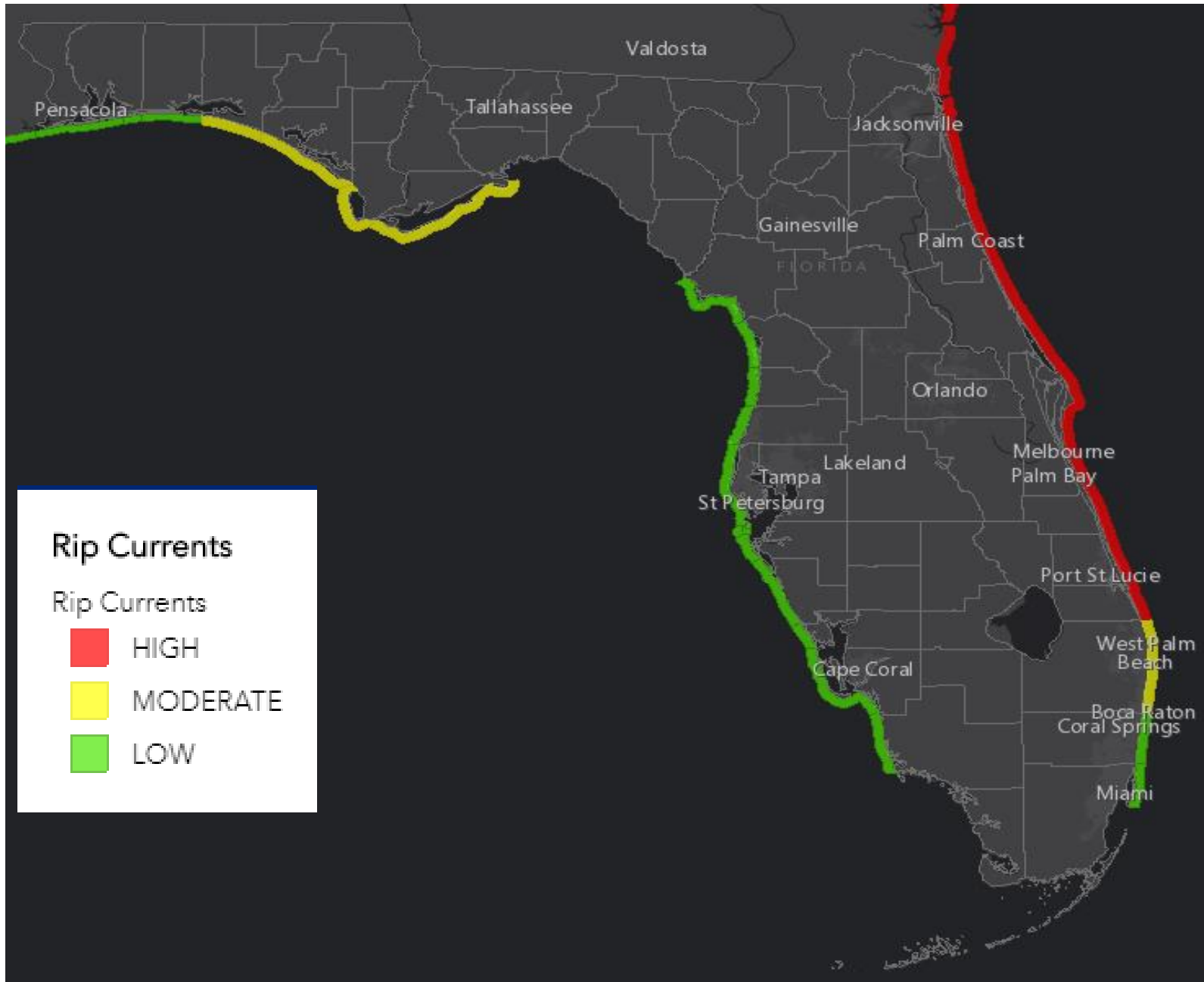
Florence has picked up some speed as it is about to make its turn toward the northwest. The center of Florence will be near the NC/TN border tonight, in the Ohio Valley Monday, and off the Northeast US coast by Wednesday. **This is the final NHC Advisory.**

Tropical Depression Florence Sunday September 16, 2018 5 AM EDT Advisory 68 NWS National Hurricane Center	Current information: x Center location 33.8 N 81.4 W Maximum sustained wind 35 mph Movement W at 8 mph	Forecast positions: ● Tropical Cyclone ○ Post/Potential TC Sustained winds: D < 39 mph S 39-73 mph H 74-110 mph M > 110 mph	
Potential track area: Day 1-3 Day 4-5	Watches: Hurricane Trop Stm	Warnings: Hurricane Trop Stm	Current wind extent: Hurricane Trop Stm

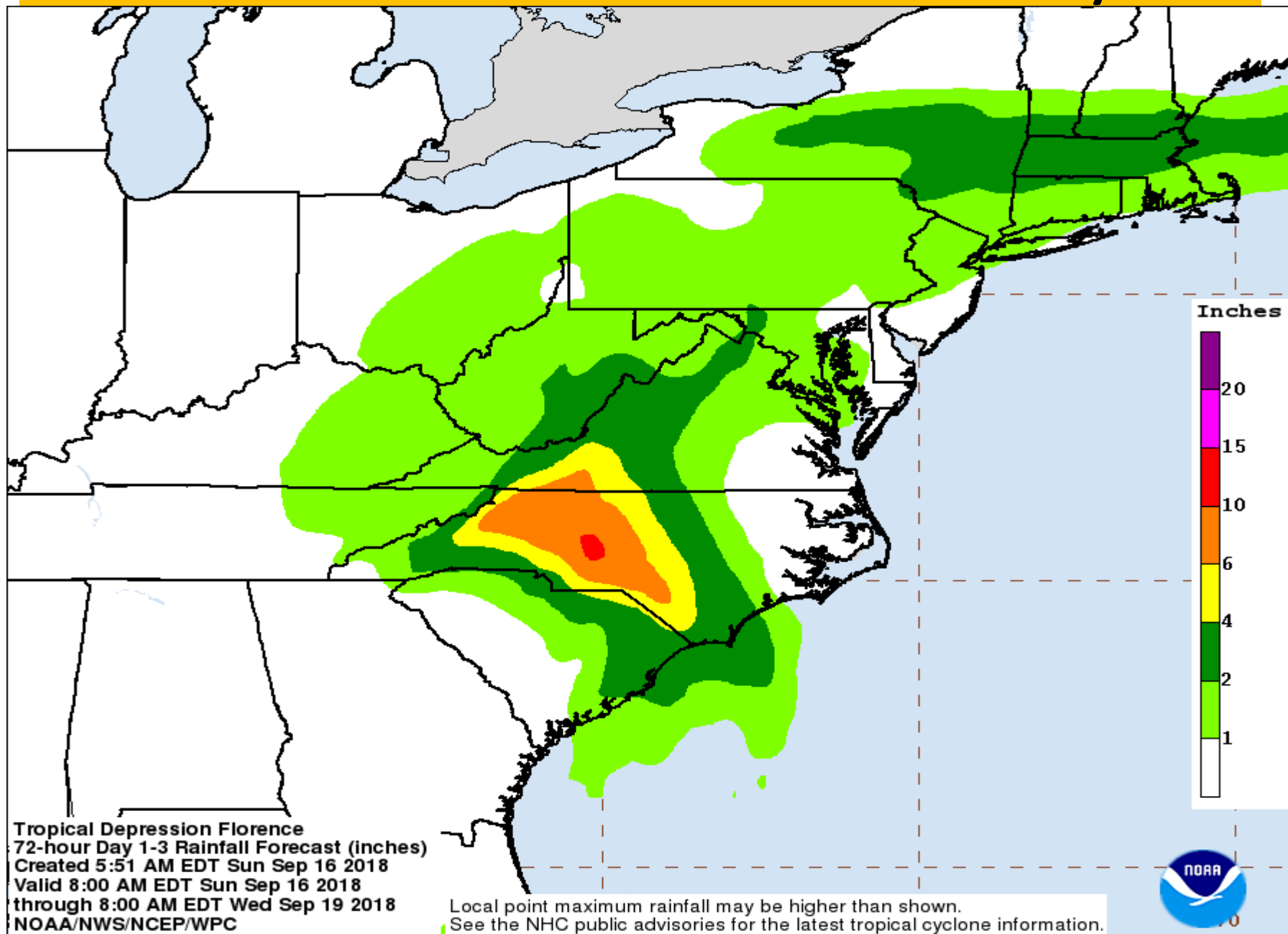
Forecast Wave Heights



Rip Current Forecast Today



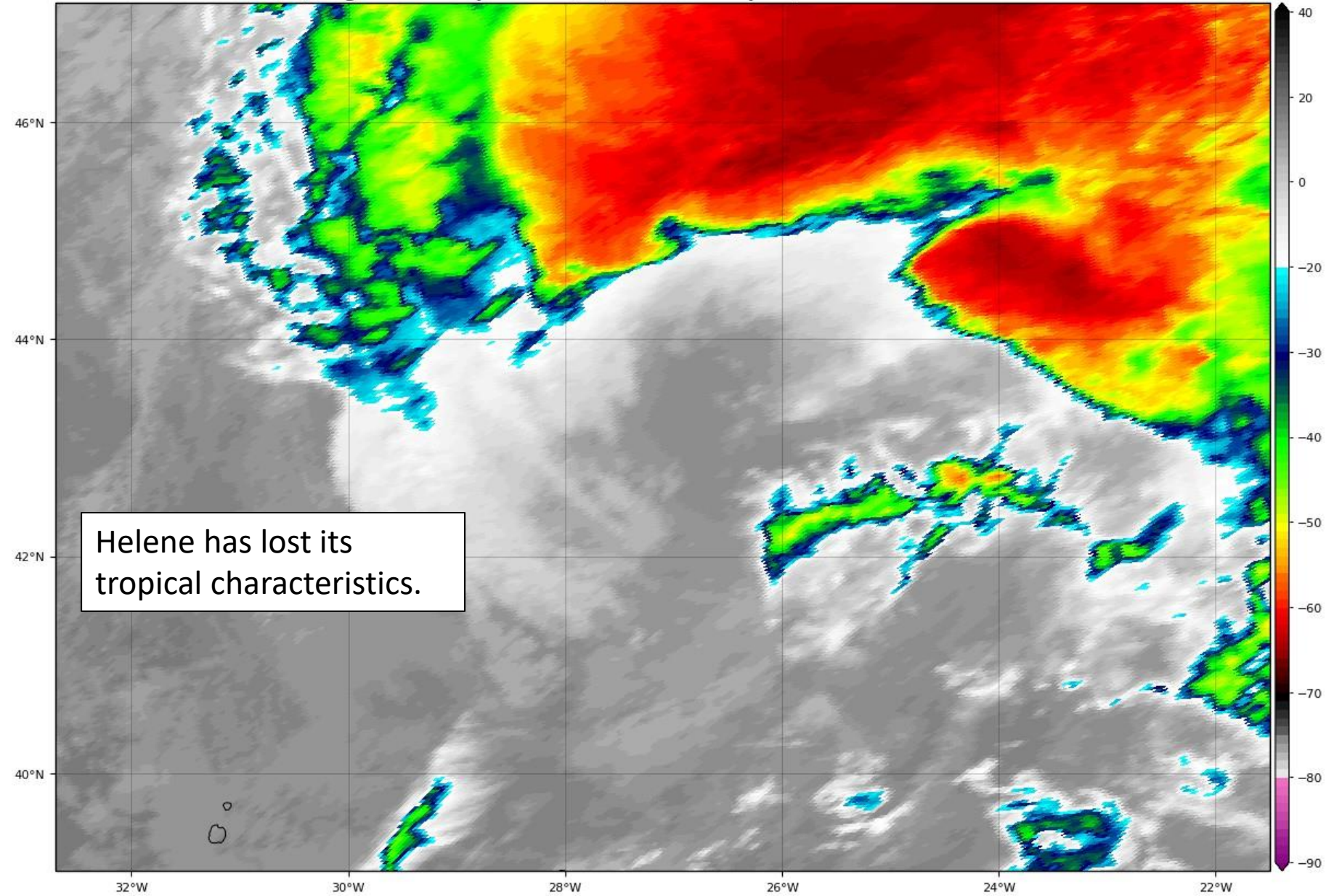
Forecast rainfall – Next 3 Days



Post-Tropical Cyclone Helene Satellite Image

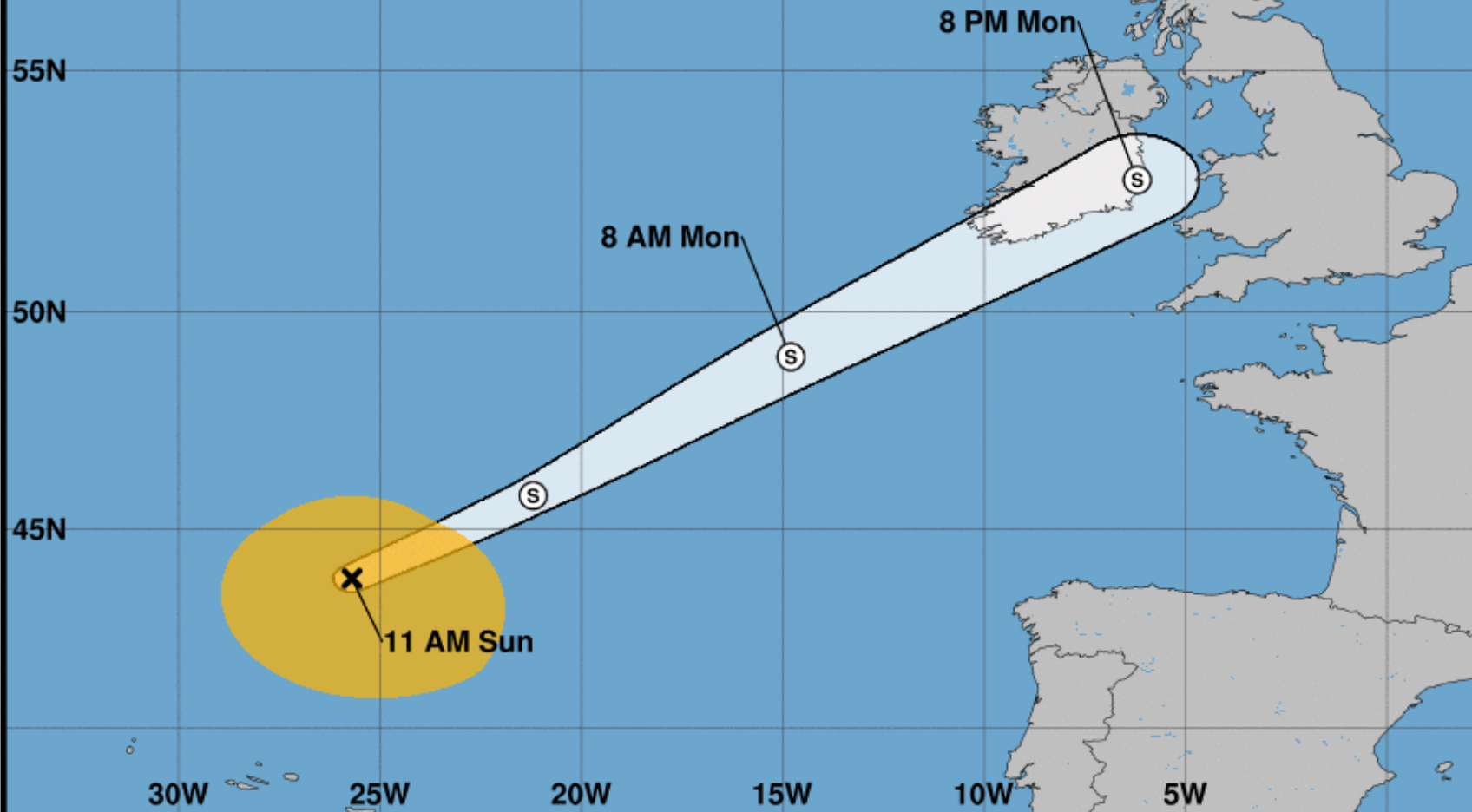
GOES-16 Channel 13 (IR) Brightness Temperature (°C) at 14:05Z Sep 16, 2018

TROPICALTIDBITS.COM





Note: The cone contains the probable path of the storm center but does not show the size of the storm. Hazardous conditions can occur outside of the cone.



Post-Tropical Cyclone Helene
Sunday September 16, 2018
11 AM AST Advisory 37
NWS National Hurricane Center

Current information: x
Center location 43.8 N 25.7 W
Maximum sustained wind 50 mph
Movement NE at 29 mph

Forecast positions:
● Tropical Cyclone ○ Post/Potential TC
Sustained winds: D < 39 mph
S 39-73 mph H 74-110 mph M > 110 mph

Potential track area:

Day 1-3 Day 4-5

Watches:

Hurricane Trop Stm

Warnings:

Hurricane Trop Stm

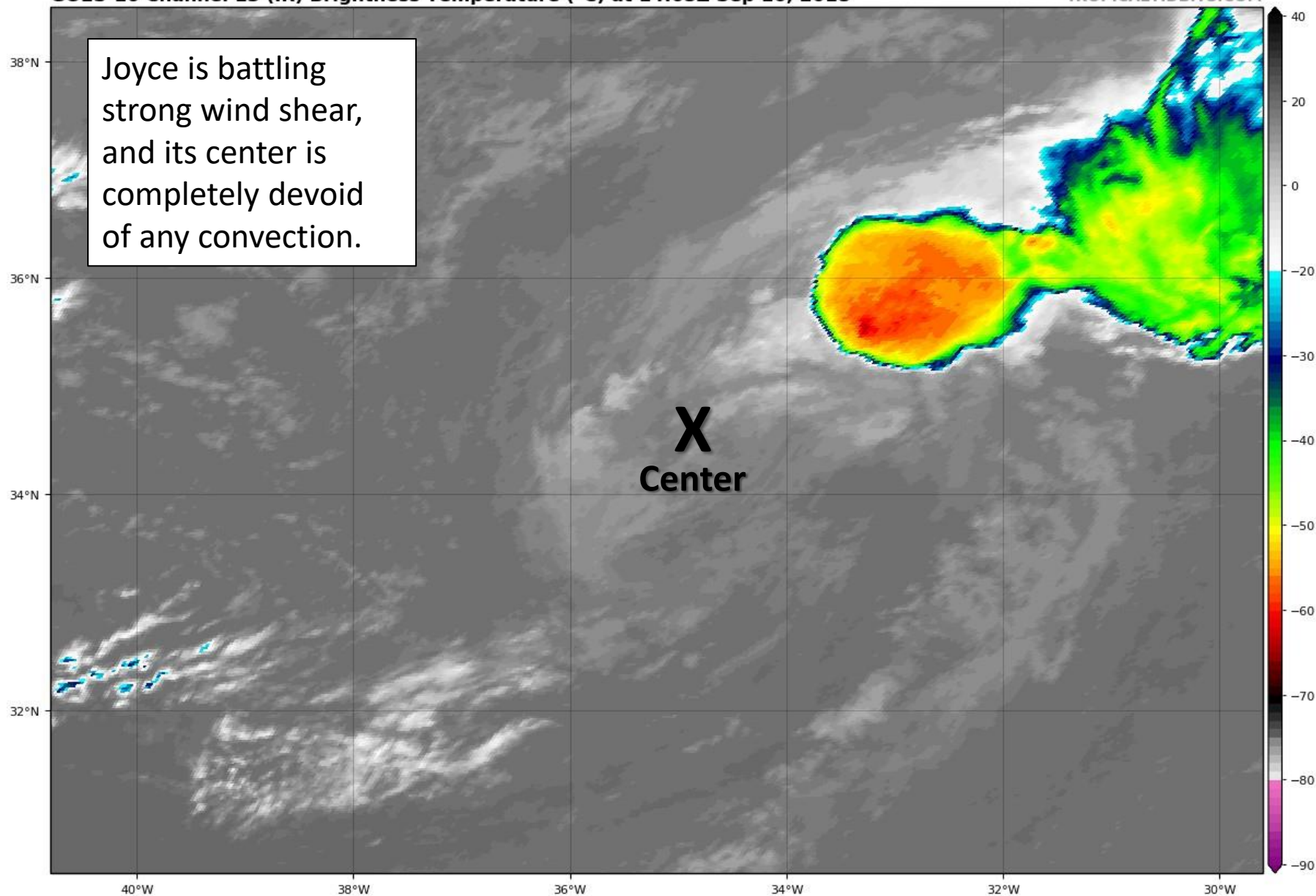
Current wind extent:

Hurricane Trop Stm

Tropical Depression Joyce Satellite Image

GOES-16 Channel 13 (IR) Brightness Temperature (°C) at 14:05Z Sep 16, 2018

TROPICALTIDBITS.COM

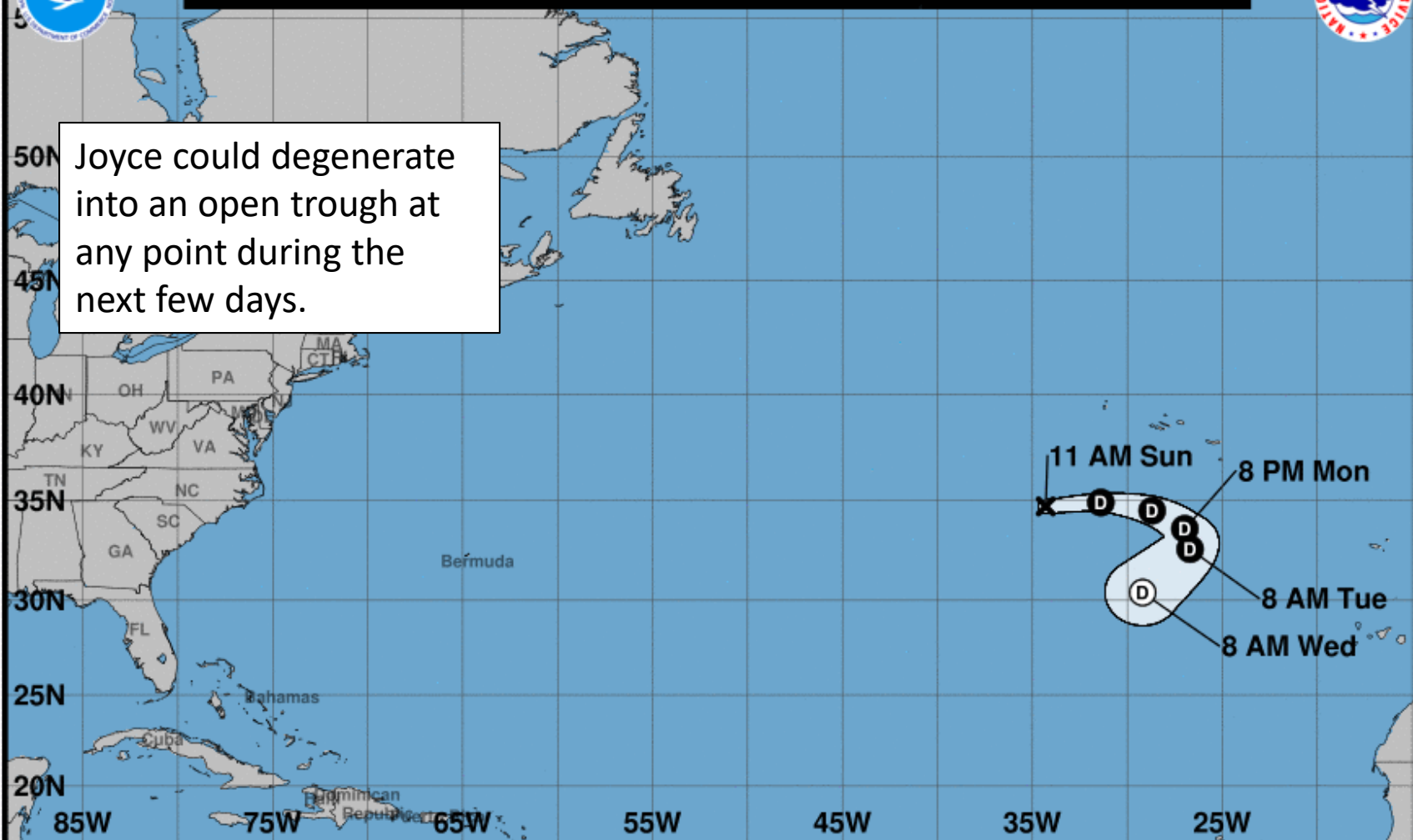




Note: The cone contains the probable path of the storm center but does not show the size of the storm. Hazardous conditions can occur outside of the cone.



Joyce could degenerate into an open trough at any point during the next few days.



Tropical Depression Joyce

Sunday September 16, 2018

11 AM AST Advisory 16

NWS National Hurricane Center

Current information: x

Center location 34.7 N 34.3 W

Maximum sustained wind 35 mph

Movement ENE at 18 mph

Forecast positions:

● Tropical Cyclone ○ Post/Potential TC

Sustained winds: D < 39 mph

S 39-73 mph H 74-110 mph M > 110 mph

Potential track area:

Day 1-3 Day 4-5

Watches:

Hurricane Trop Stm

Warnings:

Hurricane Trop Stm

Current wind extent:

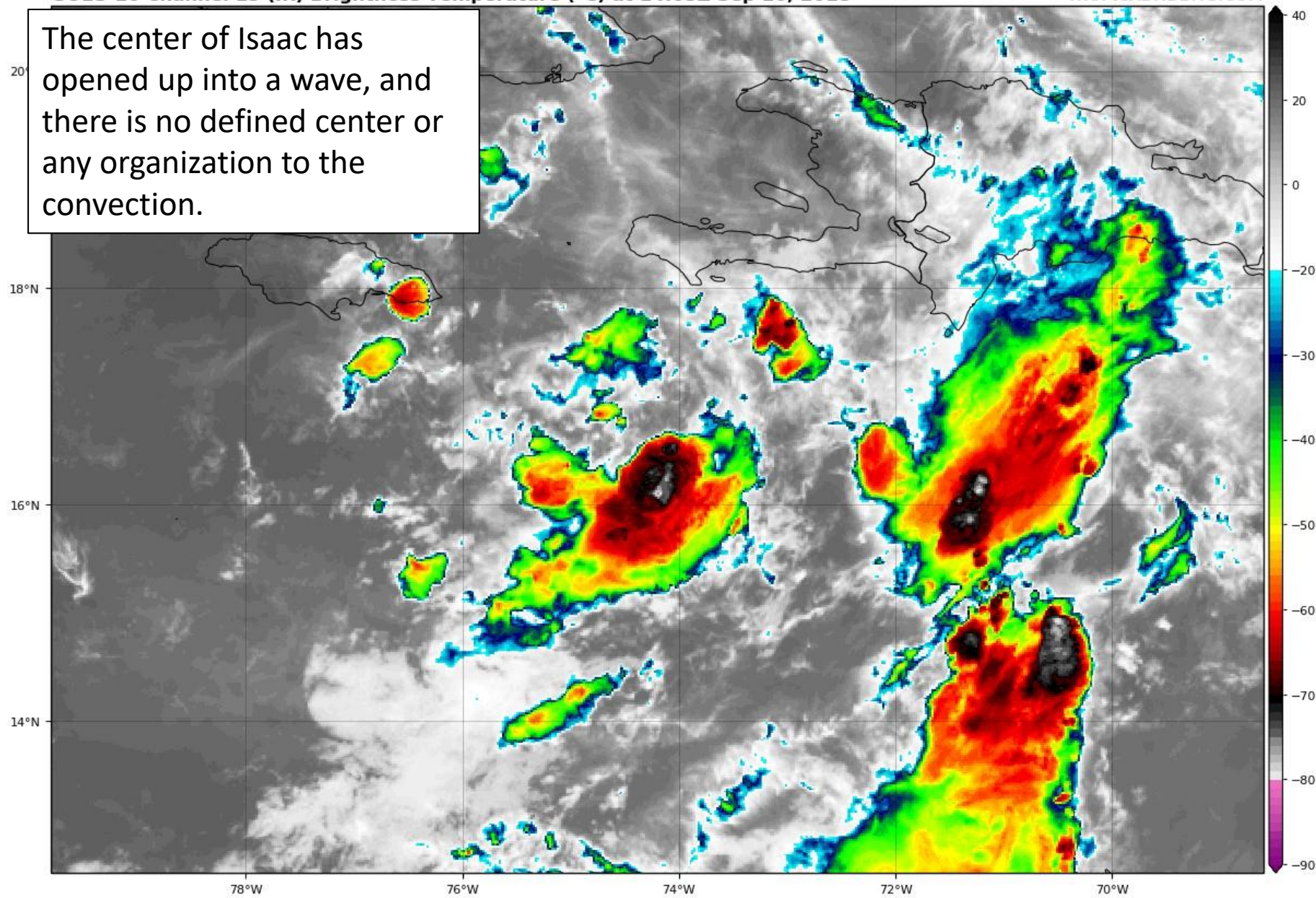
Hurricane Trop Stm

Remnants of Isaac Satellite Image

GOES-16 Channel 13 (IR) Brightness Temperature (°C) at 14:05Z Sep 16, 2018

TROPICALTIDBITS.COM

The center of Isaac has opened up into a wave, and there is no defined center or any organization to the convection.





Five-Day Graphical Tropical Weather Outlook

National Hurricane Center Miami, Florida

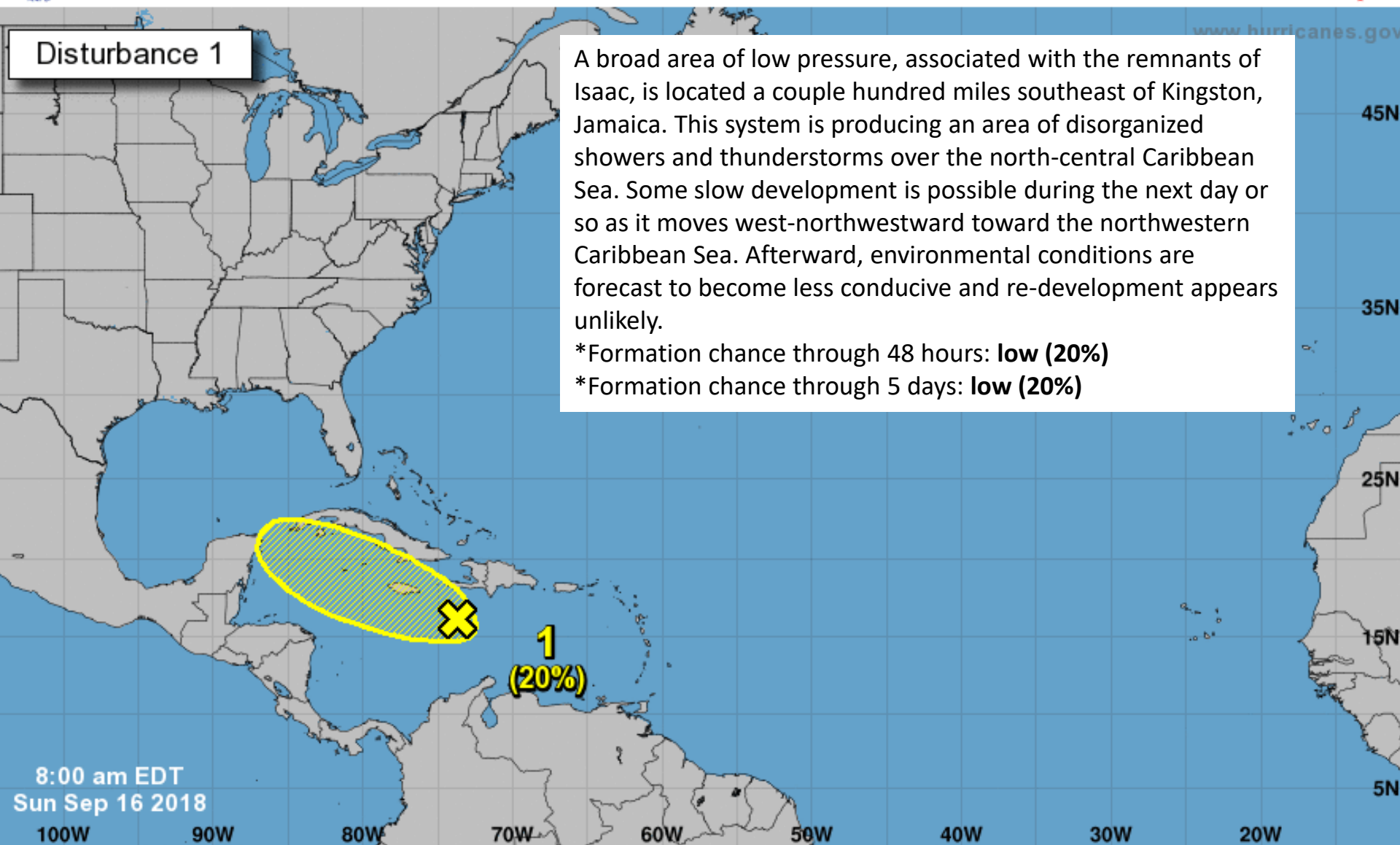


Disturbance 1

A broad area of low pressure, associated with the remnants of Isaac, is located a couple hundred miles southeast of Kingston, Jamaica. This system is producing an area of disorganized showers and thunderstorms over the north-central Caribbean Sea. Some slow development is possible during the next day or so as it moves west-northwestward toward the northwestern Caribbean Sea. Afterward, environmental conditions are forecast to become less conducive and re-development appears unlikely.

*Formation chance through 48 hours: **low (20%)**

*Formation chance through 5 days: **low (20%)**



Current Disturbances and Five-Day Cyclone Formation Chance: < 40% 40-60% > 60%

Tropical or Sub-Tropical Cyclone: Depression Storm Hurricane

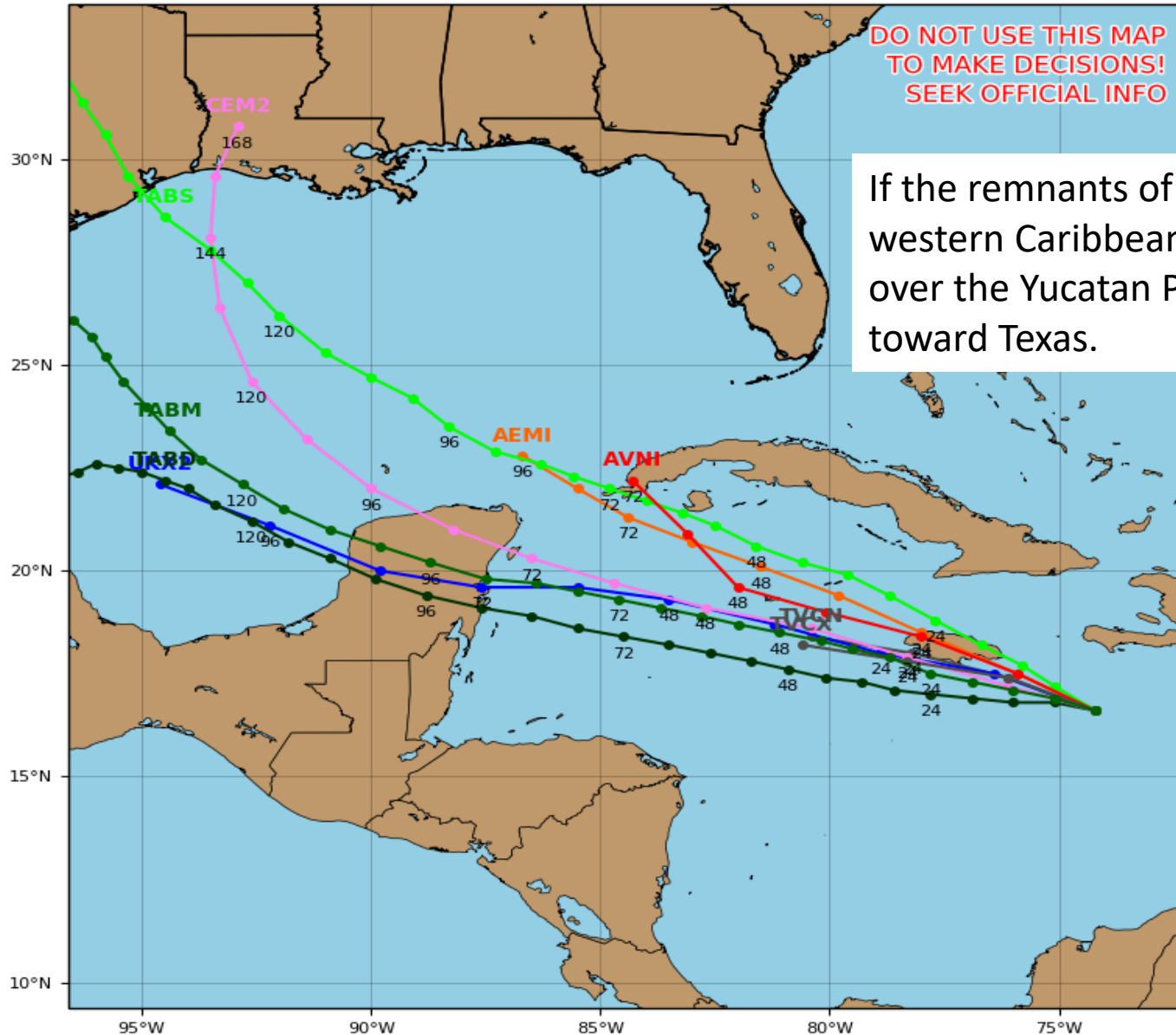
Post-Tropical Cyclone or Remnants

Remnants of Isaac Model Tracks

Remnants of ISAAC Model Track Guidance

Initialized at 12z Sep 16 2018

Levi Cowan - tropicaltidbits.com



Summary

Florence:

- At 5 AM EDT Sunday, the National Hurricane Center issued their final advisory for Tropical Depression Florence.
- At 5 AM EDT Sunday, Tropical Depression Florence was located 20 miles southwest of Columbia, South Carolina. Maximum sustained winds are near 35 mph.
- Florence has picked up some forward speed, moving westward at 8 mph. A turn toward the northwest is expected tonight with a turn toward the north and northeast forecast Monday and Tuesday.
- Heavy rainfall and isolated tornadoes remain possible for much of North Carolina and northern South Carolina.

Helene:

- At 11 AM EDT Sunday, Helene has lost tropical characteristics, and NHC has written its final advisory for Helene.
- Helene is racing northeastward at 29 mph with maximum sustained winds of 50 mph, and Helene will approach Ireland and the UK Monday.

Joyce:

- At 11 AM EDT Sunday, Joyce has weakened to a tropical depression with maximum sustained winds near 35 mph.
- Joyce will move generally eastward over the next couple days, and it could degenerate into an open trough at any point.

Remnants of Isaac:

- The remnants of Isaac will move west-northwestward over the central and western Caribbean, but redevelopment is not likely.
- There is an area of lower wind shear just ahead of Isaac's remnants that may allow for some slow redevelopment. Wind shear increases as the remnants approach the western Caribbean.
- The National Hurricane Center gives the remnants of Isaac a 20% chance of redevelopment.

Florida Outlook:

- Some remaining swells from Florence will continue to impact the Florida East Coast through early week, resulting in life-threatening rip currents.
- The remnants of Isaac should continue to be monitored over the next 3-5 days as it moves through the Caribbean, but is not a direct threat to Florida at this time.

With the last advisory written on Florence and the remnants of Isaac only having a low chance of redevelopment, this will be the final tropics packet for now. Should the chances for redevelopment increase to 40% or more for the remnants of Isaac, tropics packets may begin again. For the latest information on the tropics, please visit the National Hurricane Center website at www.hurricanes.gov.



TROPICAL UPDATE

Created by:

Cameron Young, Assistant State Meteorologist

Cameron.Young@em.myflorida.com

State Meteorological Support Unit

Florida Division of Emergency
Management

Users wishing to subscribe (approval pending) to this distribution list, register at https://public.govdelivery.com/accounts/FLDEM/subscriber/new?topic_id=SERT_Met_Tropics.

Other reports available for subscription are available at

<https://public.govdelivery.com/accounts/FLDEM/subscriber/new?preferences=true>