



TROPICAL UPDATE

5 PM EDT

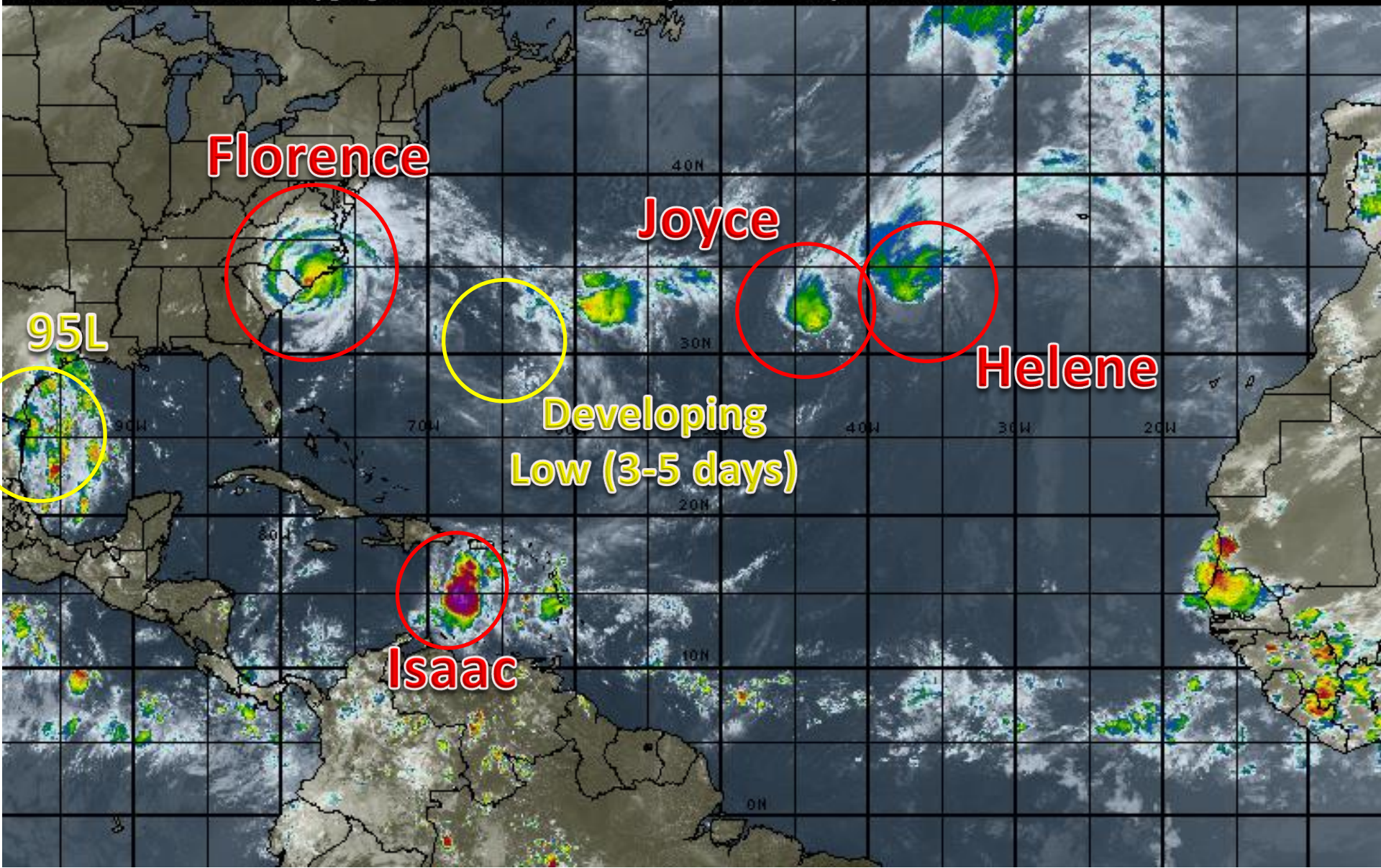
Friday, September 14, 2018

**Tropical Storm Florence, Tropical Storm Helene,
Tropical Storm Isaac, Tropical Storm Joyce, Invest
95L (10%) & Bermuda Low (10%)**

This update is intended for government and emergency response officials, and is provided for informational and situational awareness purposes only. Forecast conditions are subject to change based on a variety of environmental factors. For additional information, or for any life safety concerns with an active weather event please contact your County Emergency Management or Public Safety Office, local National Weather Service forecast office or visit the National Hurricane Center website at www.nhc.noaa.gov.

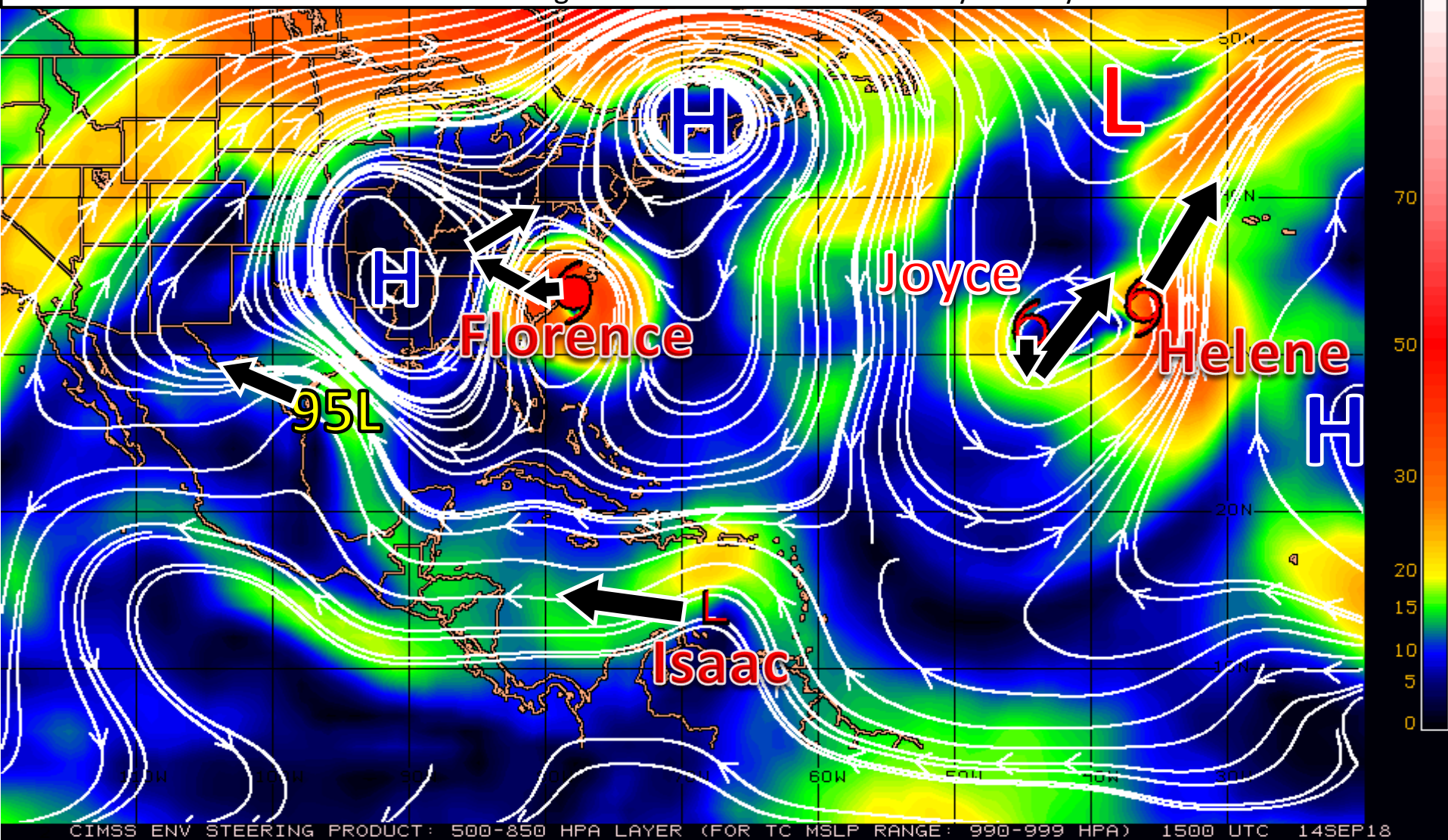
Atlantic Basin Satellite Image

18:00 14-SEP-2018 GMT Copyright © 1998-2018 MSI Corporation <http://www.wsi.com>



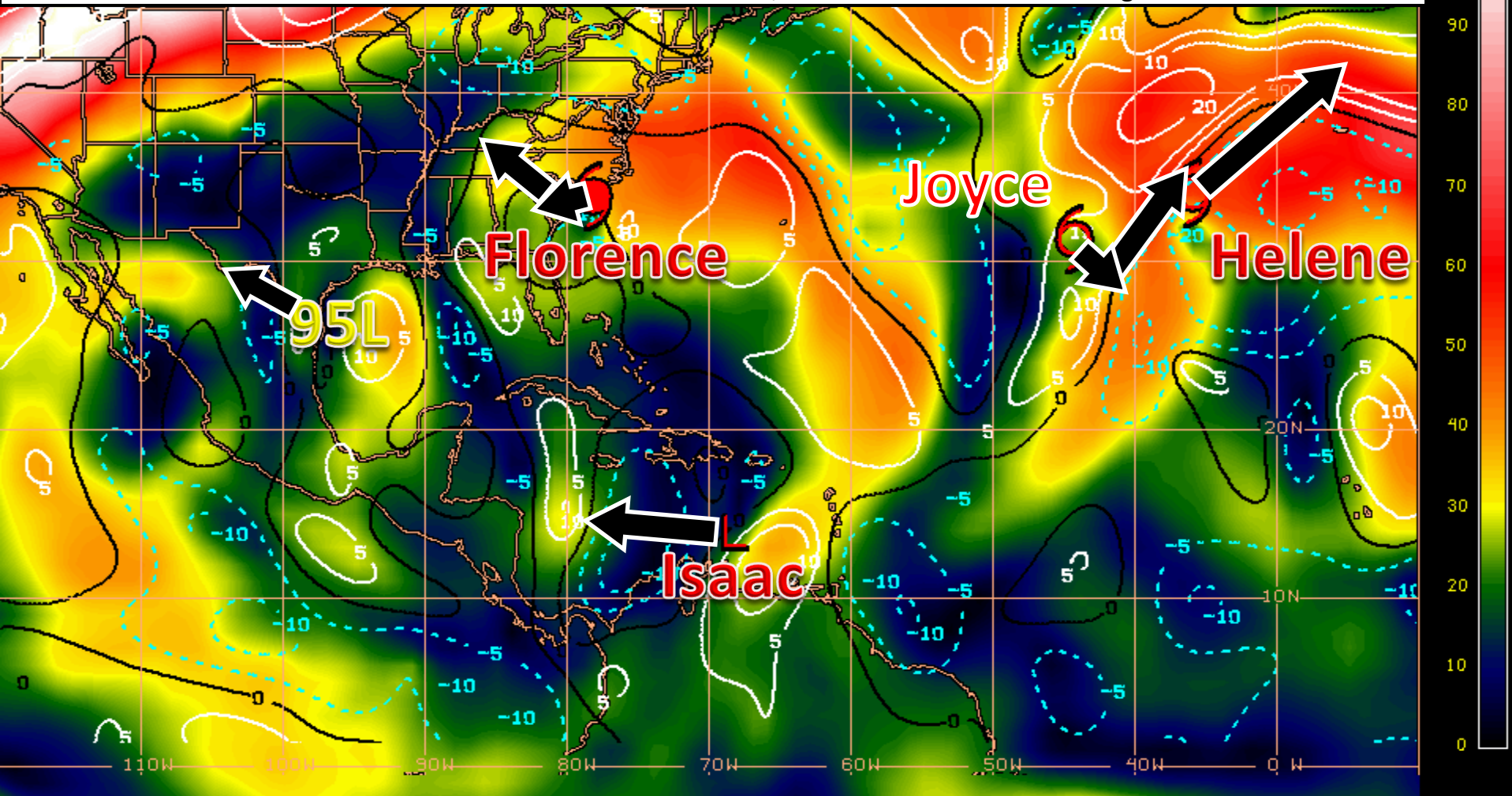
Steering Currents

A large and strong high pressure system in the western Atlantic will steer Florence, Isaac, and 95L while an area of low pressure in the northeastern Atlantic pulls Helene and Joyce northward. Another smaller area of high pressure to the west of Florence will be responsible for the slow westward drift of Florence until it reaches better steering flow near the Tennessee Valley in 3 days.



Wind Shear (shaded) and Wind Shear Tendencies (contoured)

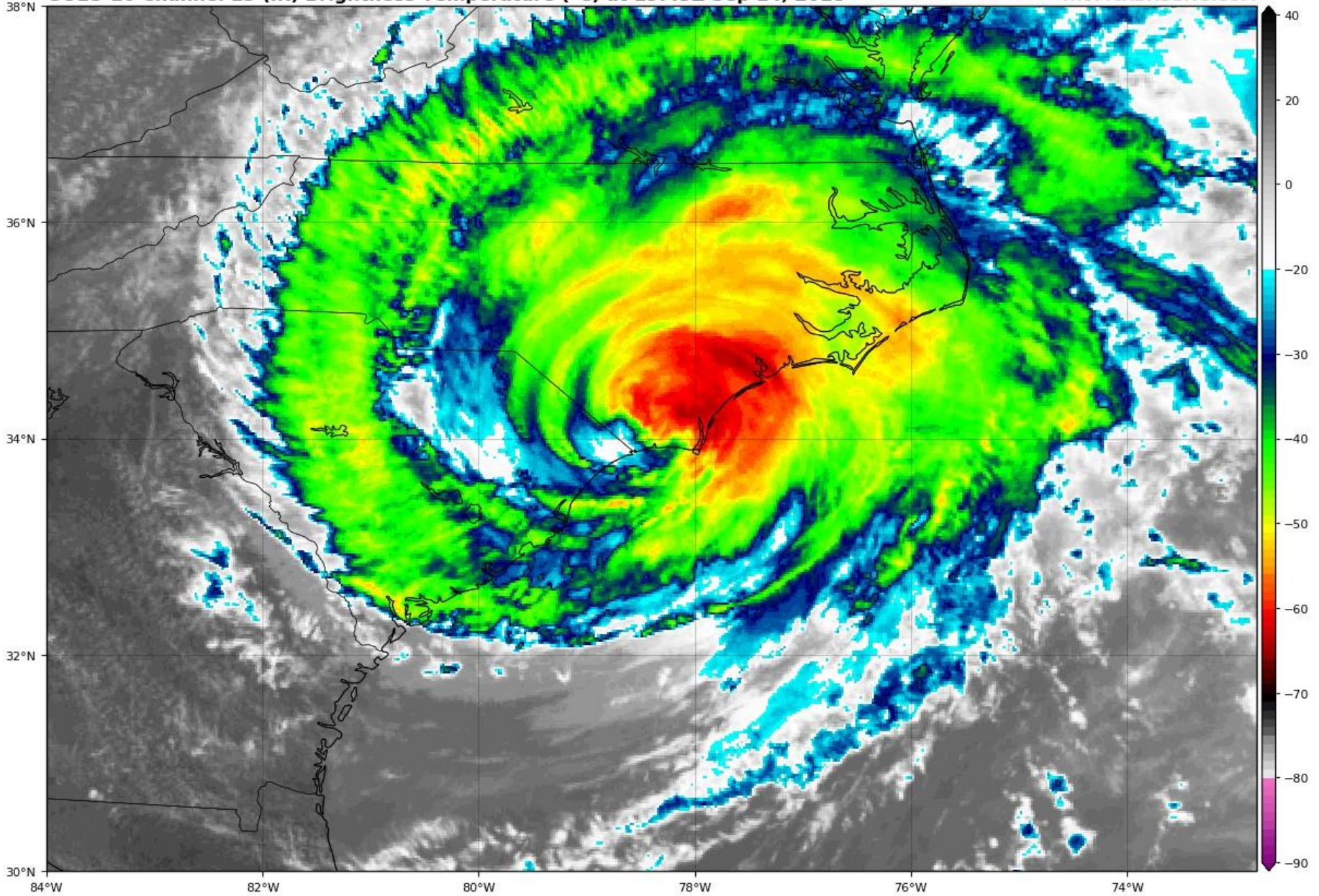
Florence is battling some wind shear, and this along with interaction with land will result in a gradual weakening trend. Isaac will continue to encounter some pockets of low to moderate wind shear over the next 4 days and may cause the already weakened system to dissipate. 95L in the Gulf is in a relatively low shear environment, but it is running out of time to take advantage of the hospitable conditions before moving inland. Helene and Joyce will encounter strong wind shear, which when combined with cooler waters, will lead to further weakening.

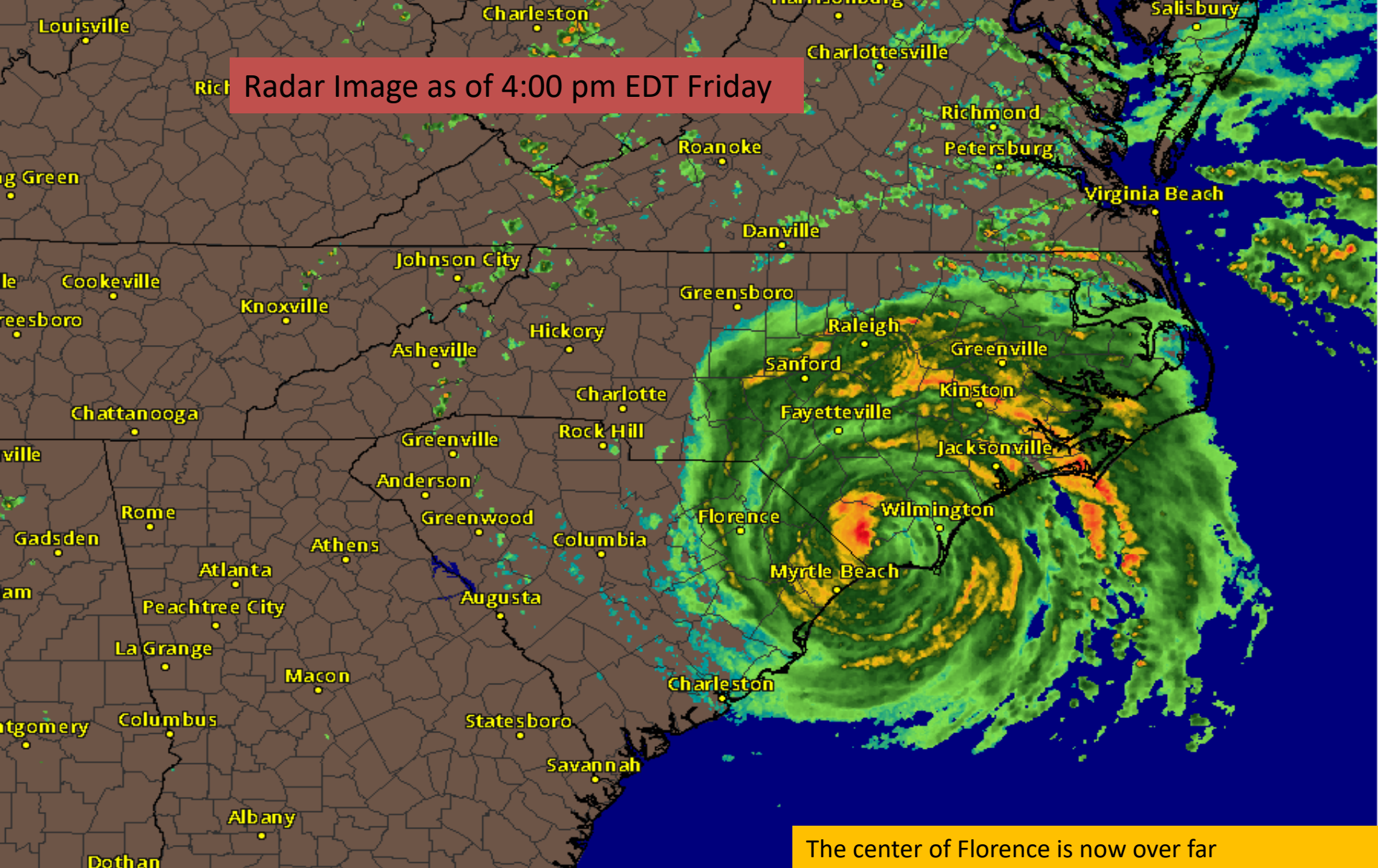


Tropical Storm Florence Satellite Image

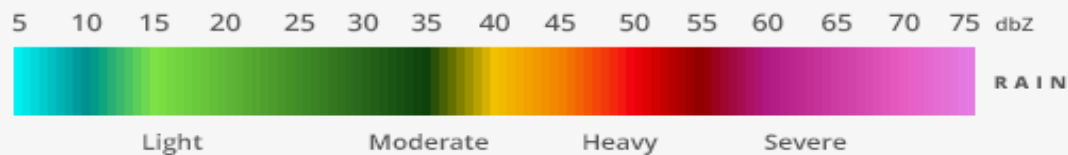
GOES-16 Channel 13 (IR) Brightness Temperature (°C) at 19:43Z Sep 14, 2018

TROPICALTIDBITS.COM



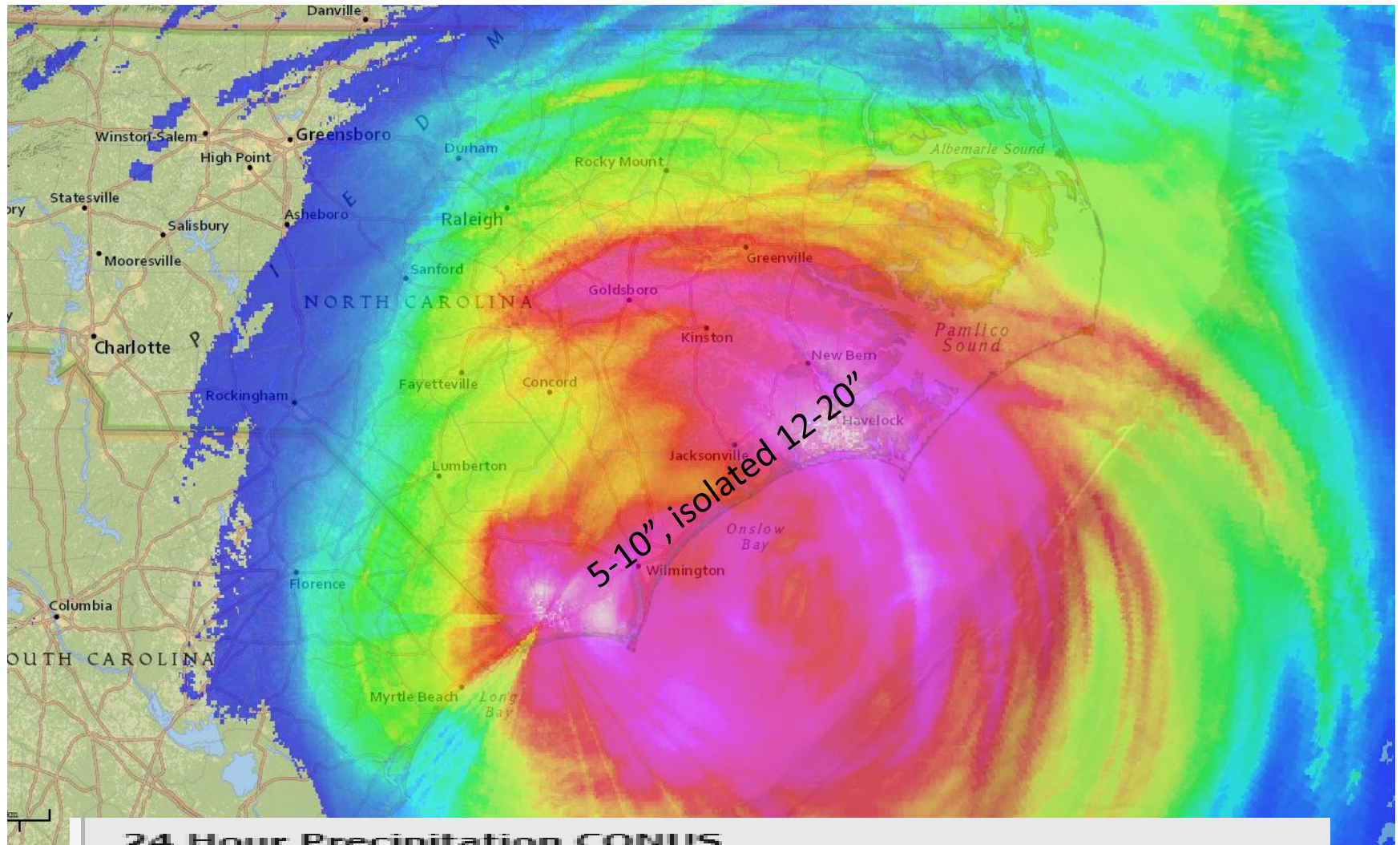


Rich Radar Image as of 4:00 pm EDT Friday



The center of Florence is now over far southeastern North Carolina, nearing the SC/NC border. Outer bands continue to produce prolific rainfall and the possibility of tornadoes. Florence's center will likely move into northeastern South Carolina later tonight or Saturday.

Radar Estimated Rainfall – Past 24 hours



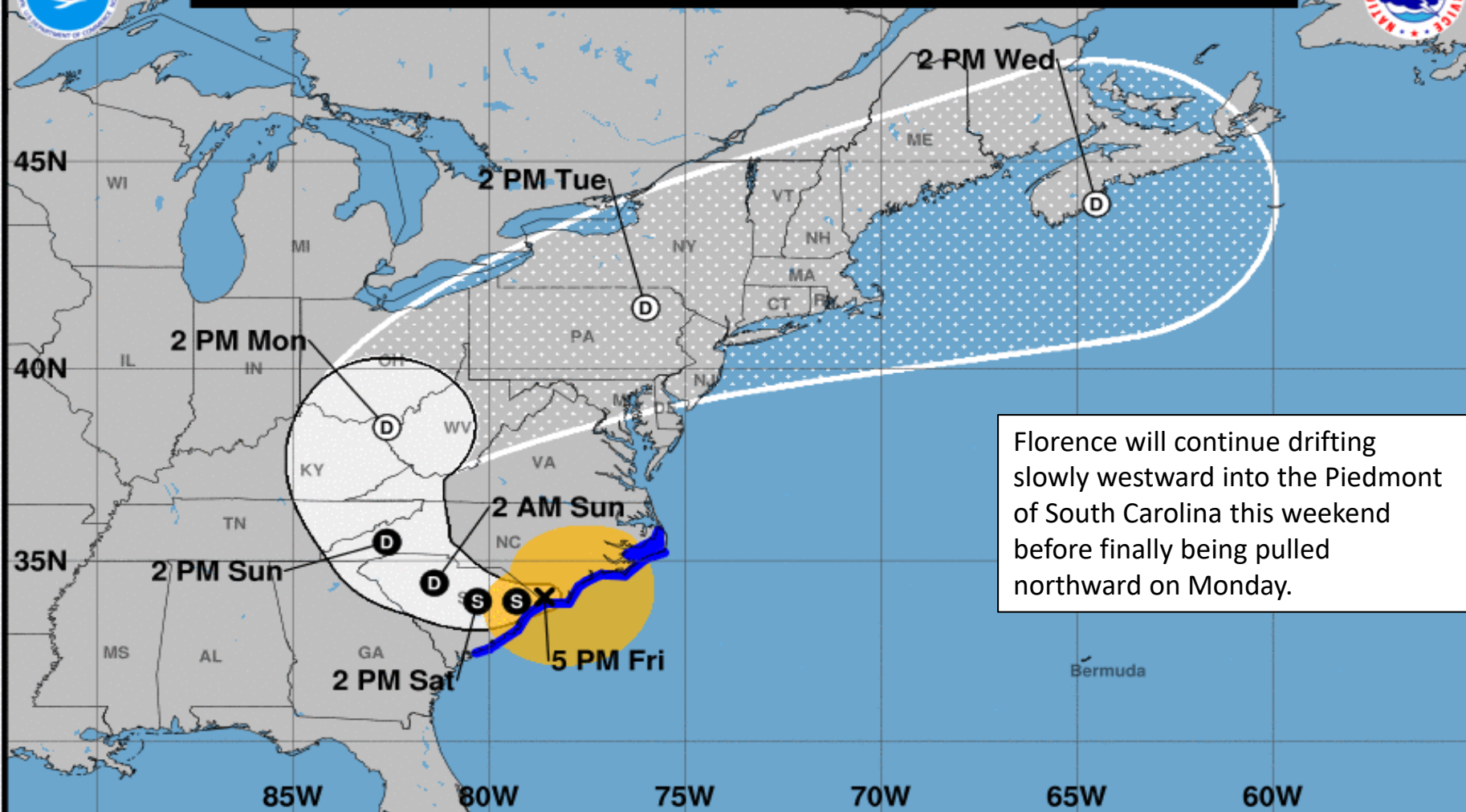
24 Hour Precipitation CONUS

Valid: 8:00 AM EDT, September 13th to 8:00 AM EDT, September 14th





Note: The cone contains the probable path of the storm center but does not show the size of the storm. Hazardous conditions can occur outside of the cone.



Tropical Storm Florence

Friday September 14, 2018

5 PM EDT Advisory 62

NWS National Hurricane Center

Current information: x

Center location 34.0 N 78.6 W

Maximum sustained wind 70 mph

Movement W at 3 mph

Forecast positions:

● Tropical Cyclone ○ Post/Potential TC

Sustained winds: D < 39 mph

S 39-73 mph H 74-110 mph M > 110 mph

Potential track area:

Day 1-3 Day 4-5

Watches:

Hurricane Trop Stm

Warnings:

Hurricane Trop Stm

Current wind extent:

Hurricane Trop Stm

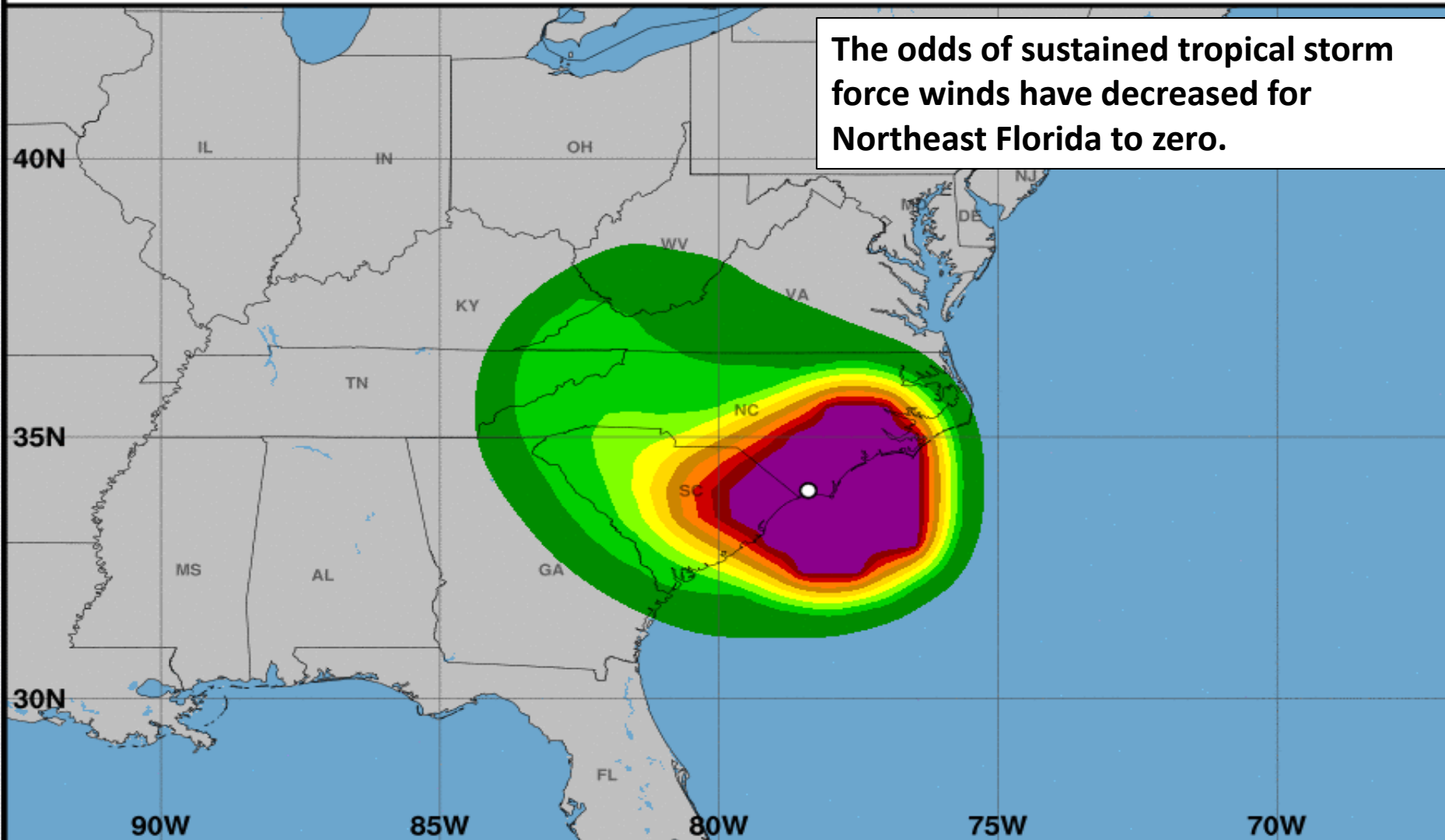


Tropical-Storm-Force Wind Speed Probabilities (Preliminary)

For the 120 hours (5.0 days) from 2 PM EDT FRI SEP 14 to 2 PM EDT WED SEP 19



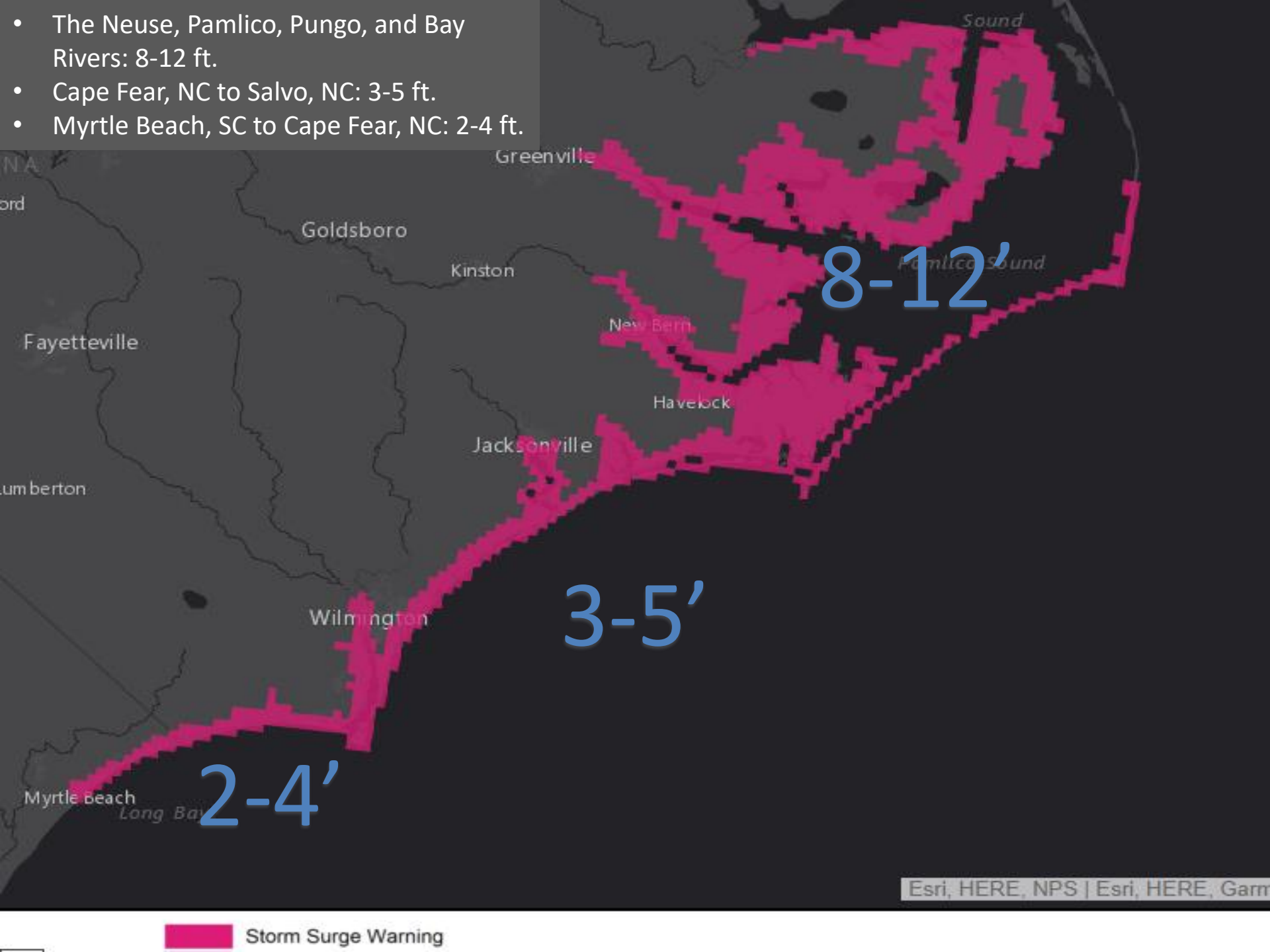
The odds of sustained tropical storm force winds have decreased for Northeast Florida to zero.



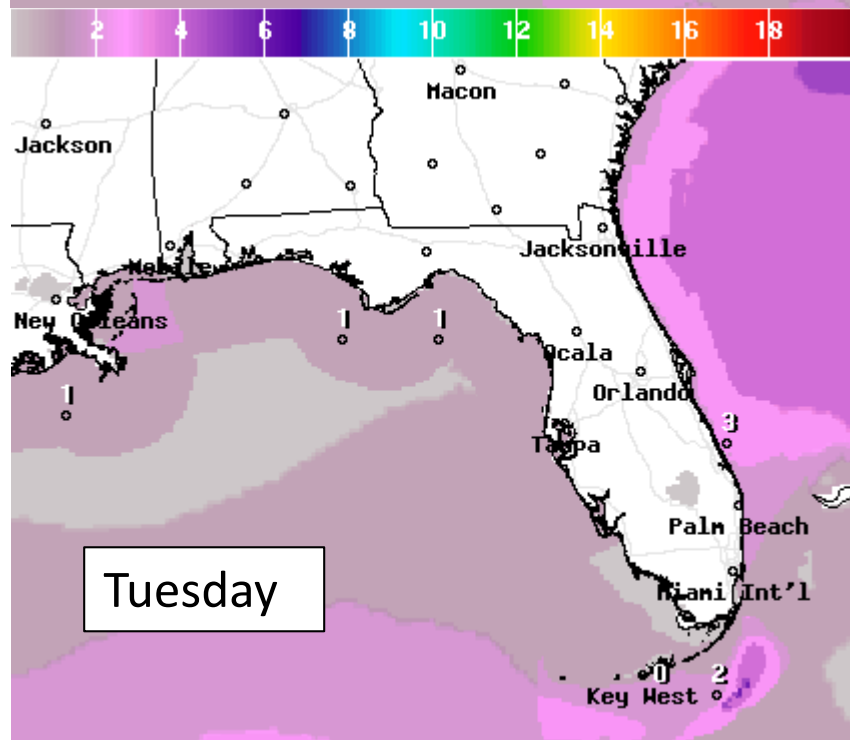
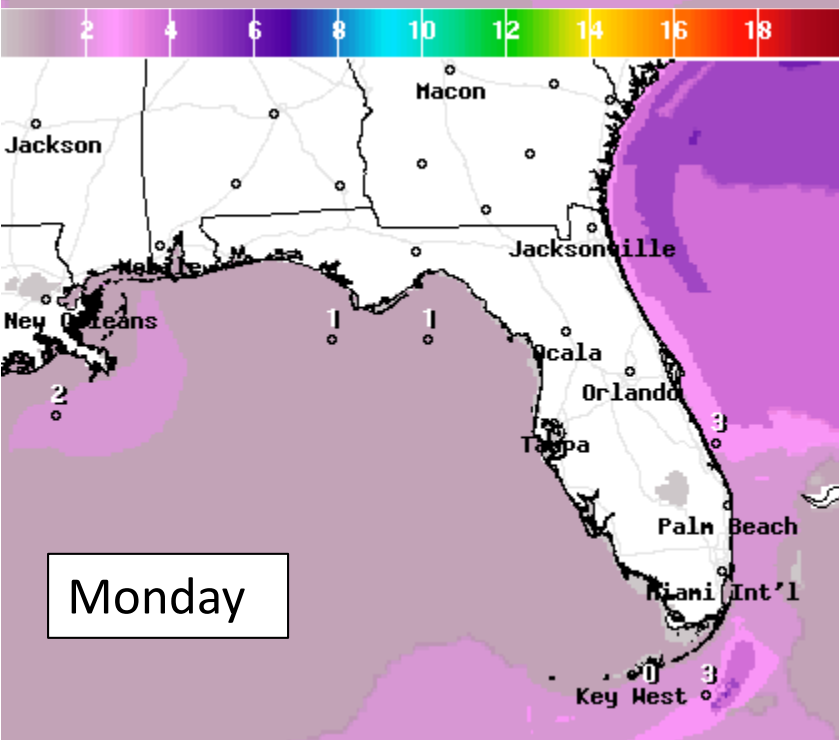
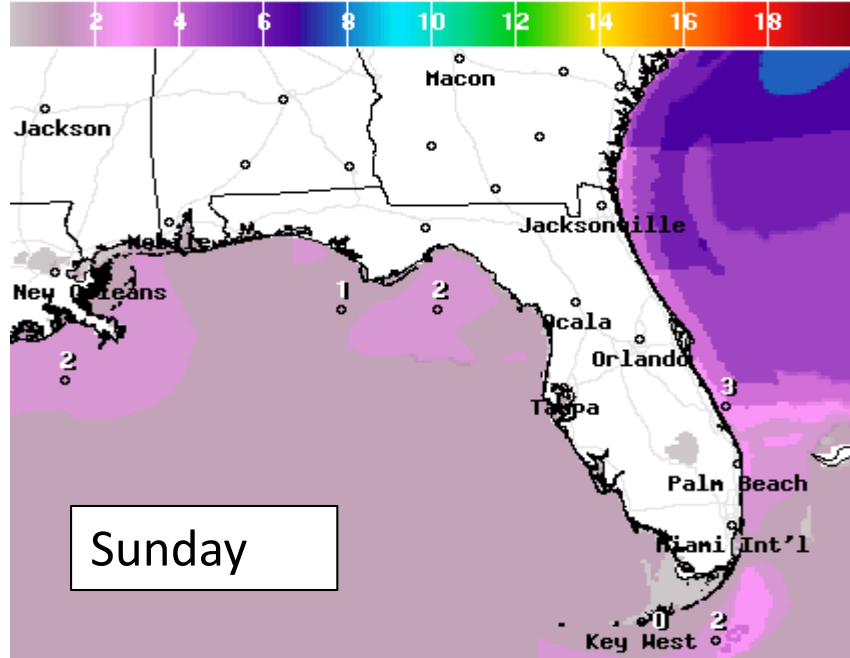
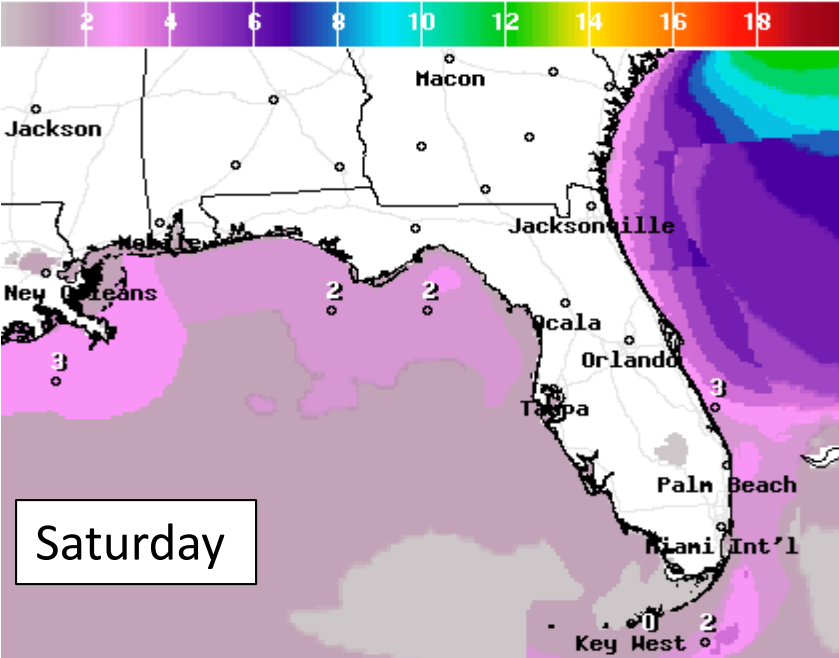
Probability of tropical-storm-force winds (1-minute average ≥ 39 mph) from Tropical Storm Florence
○ indicates Tropical Storm Florence center location at 2 PM EDT FRI SEP 14, 2018 (Forecast/Advisory #62)



- The Neuse, Pamlico, Pungo, and Bay Rivers: 8-12 ft.
- Cape Fear, NC to Salvo, NC: 3-5 ft.
- Myrtle Beach, SC to Cape Fear, NC: 2-4 ft.



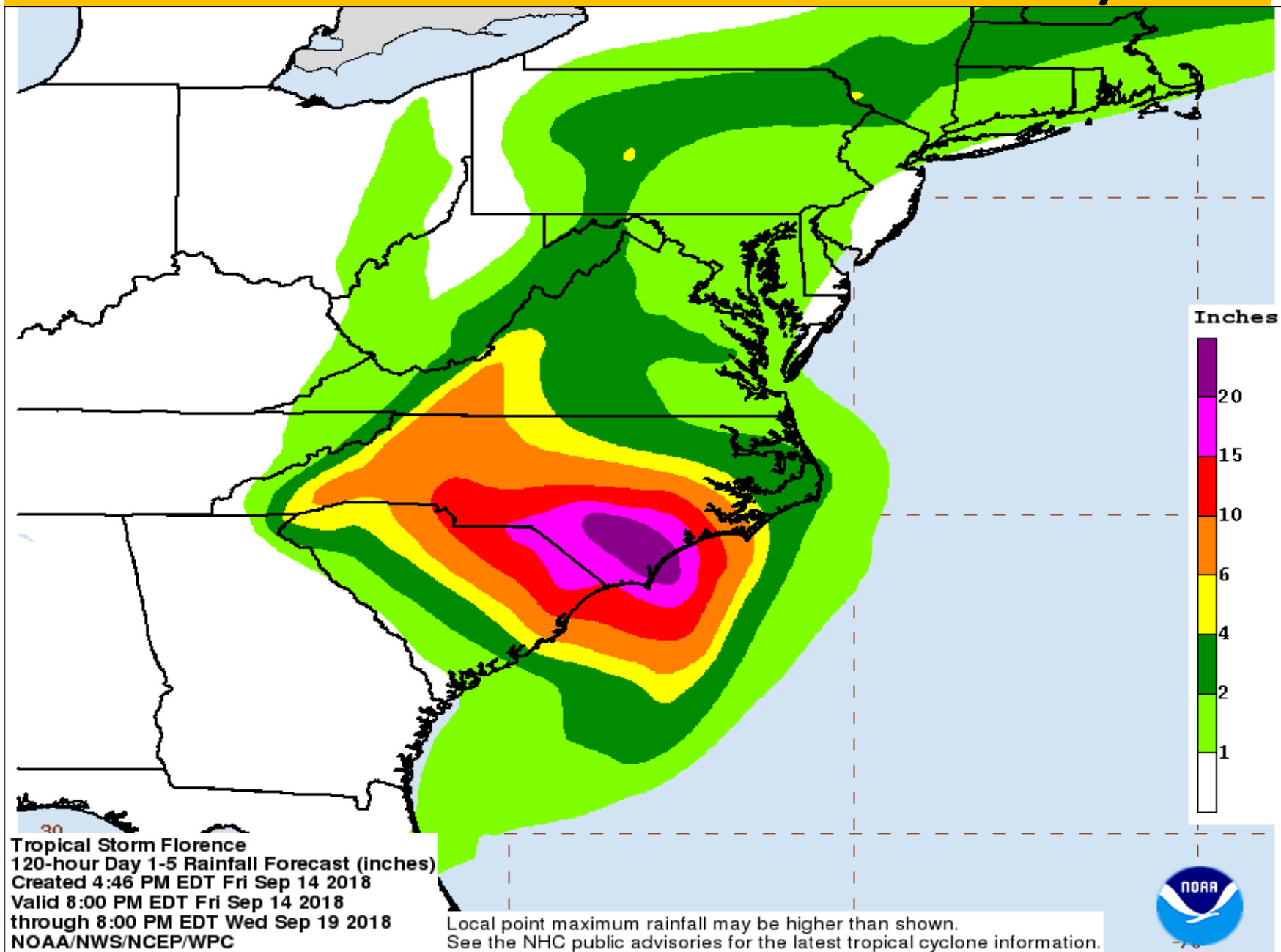
Forecast Wave Heights



Rip Current Forecast Today



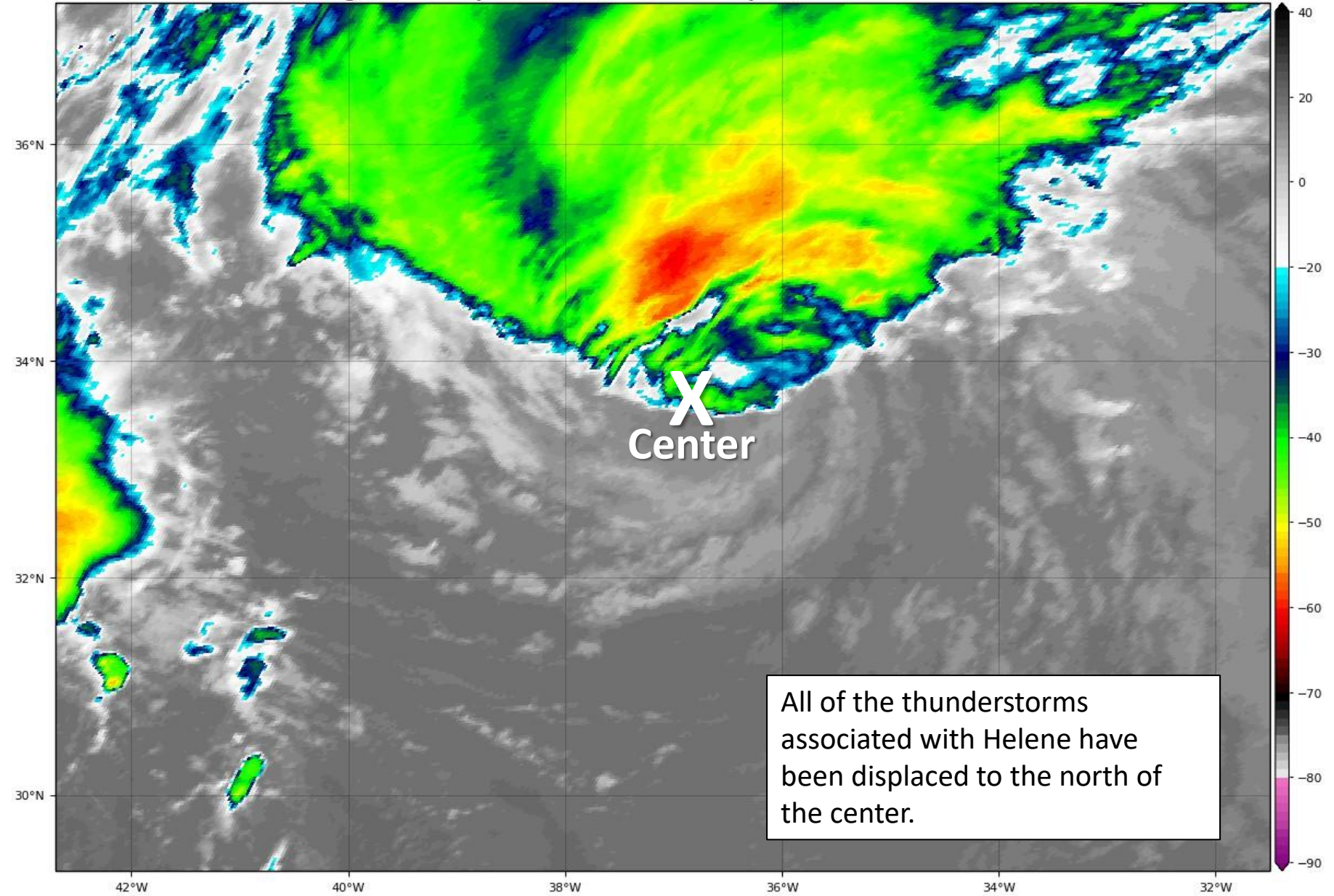
Forecast rainfall – Next 5 Days



Tropical Storm Helene Satellite Image

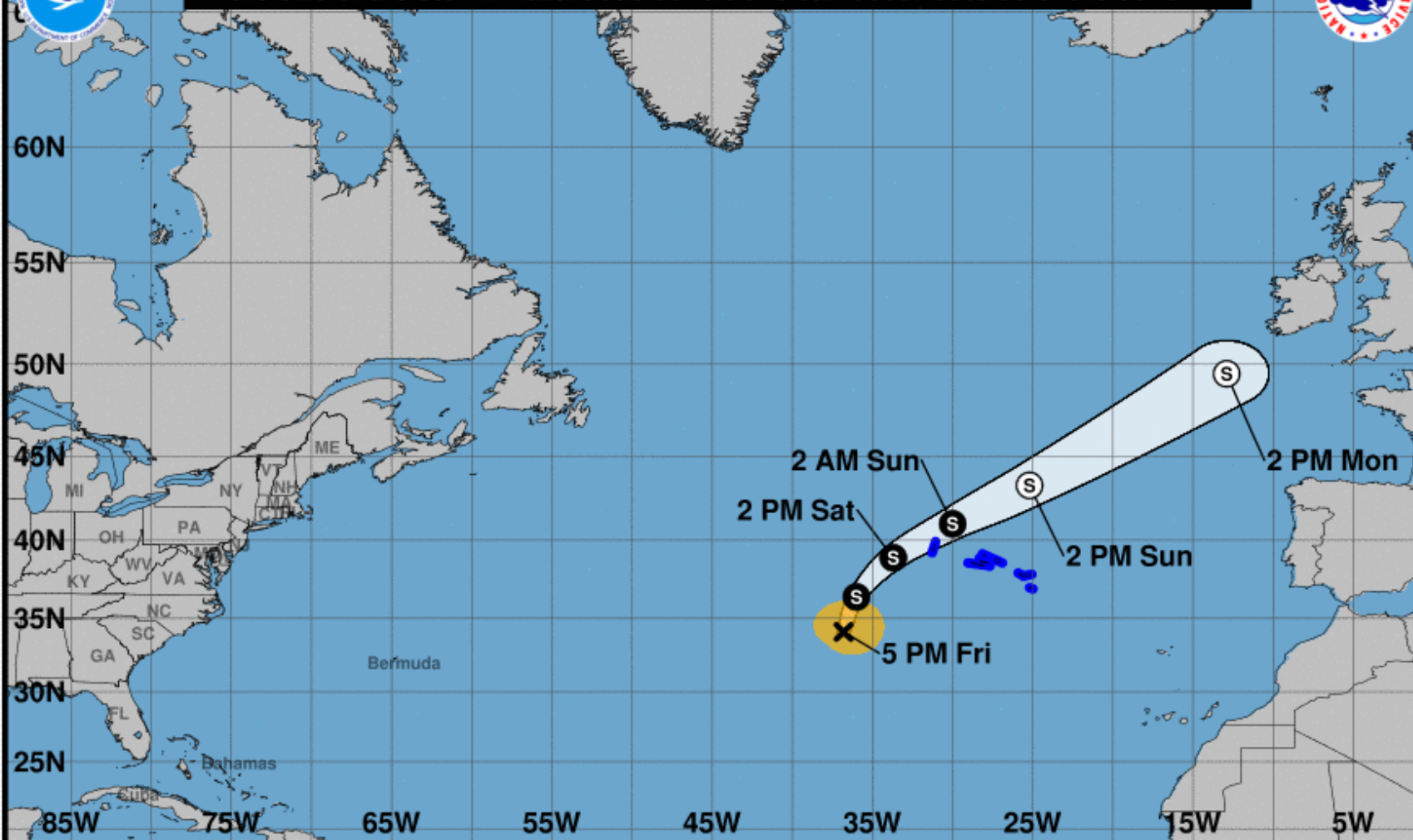
GOES-16 Channel 13 (IR) Brightness Temperature (°C) at 19:35Z Sep 14, 2018

TROPICALTIDBITS.COM





Note: The cone contains the probable path of the storm center but does not show the size of the storm. Hazardous conditions can occur outside of the cone.



Tropical Storm Helene

Friday September 14, 2018

5 PM AST Advisory 30

NWS National Hurricane Center

Current information: x

Center location 34.1 N 36.8 W

Maximum sustained wind 70 mph

Movement N at 18 mph

Forecast positions:

● Tropical Cyclone ○ Post/Potential TC

Sustained winds: D < 39 mph

S 39-73 mph H 74-110 mph M > 110 mph

Potential track area:

Day 1-3 Day 4-5

Watches:

Hurricane Trop Stm

Warnings:

Hurricane Trop Stm

Current wind extent:

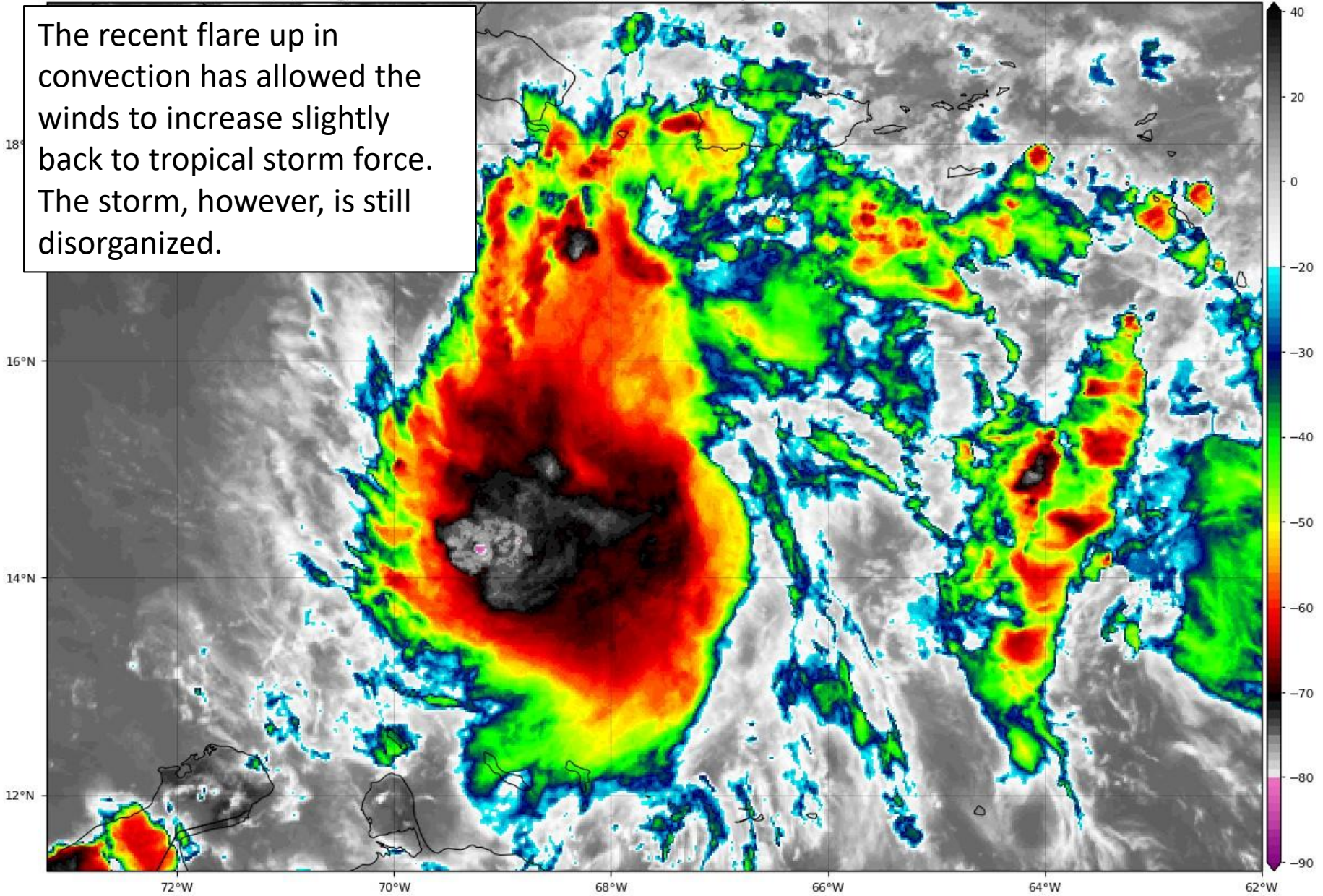
Hurricane Trop Stm

Tropical Storm Isaac Satellite Image

GOES-16 Channel 13 (IR) Brightness Temperature (°C) at 19:35Z Sep 14, 2018

TROPICALTIDBITS.COM

The recent flare up in convection has allowed the winds to increase slightly back to tropical storm force. The storm, however, is still disorganized.





Note: The cone contains the probable path of the storm center but does not show the size of the storm. Hazardous conditions can occur outside of the cone.



Isaac is forecast to remain weak before dissipating in the western Caribbean. It is possible that Isaac dissipates earlier than forecast. However, this forecast is very uncertain.



Tropical Storm Isaac

Friday September 14, 2018

5 PM AST Advisory 29

NWS National Hurricane Center

Current information: x

Center location 15.3 N 68.2 W

Maximum sustained wind 40 mph

Movement W at 14 mph

Forecast positions:

● Tropical Cyclone ○ Post/Potential TC

Sustained winds: D < 39 mph

S 39-73 mph H 74-110 mph M > 110 mph

Potential track area:

Day 1-3 Day 4-5

Watches:

Hurricane Trop Stm

Warnings:

Hurricane Trop Stm

Current wind extent:

Hurricane Trop Stm

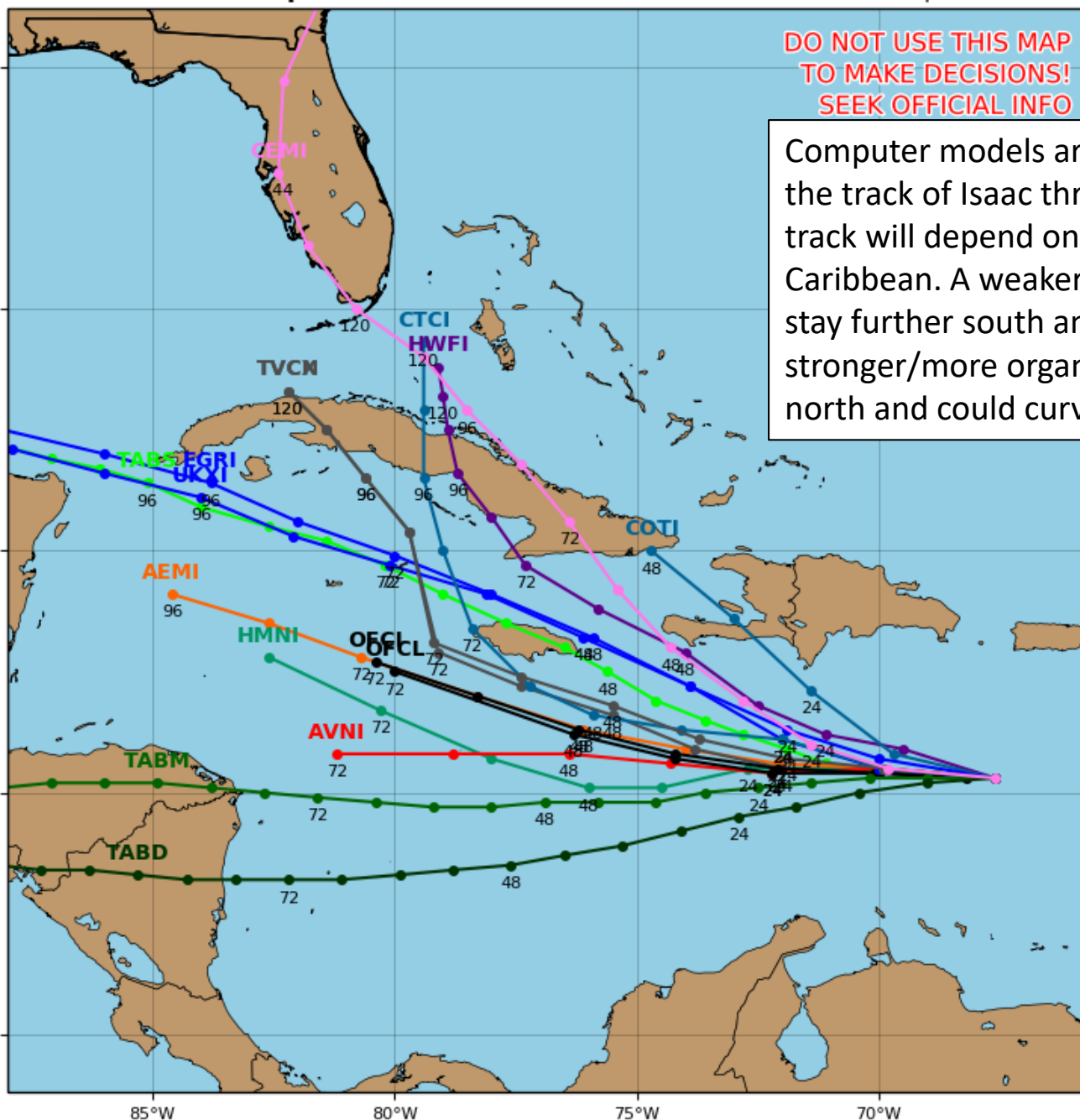
Tropical Storm ISAAC Model Track Guidance

Initialized at 18z Sep 14 2018

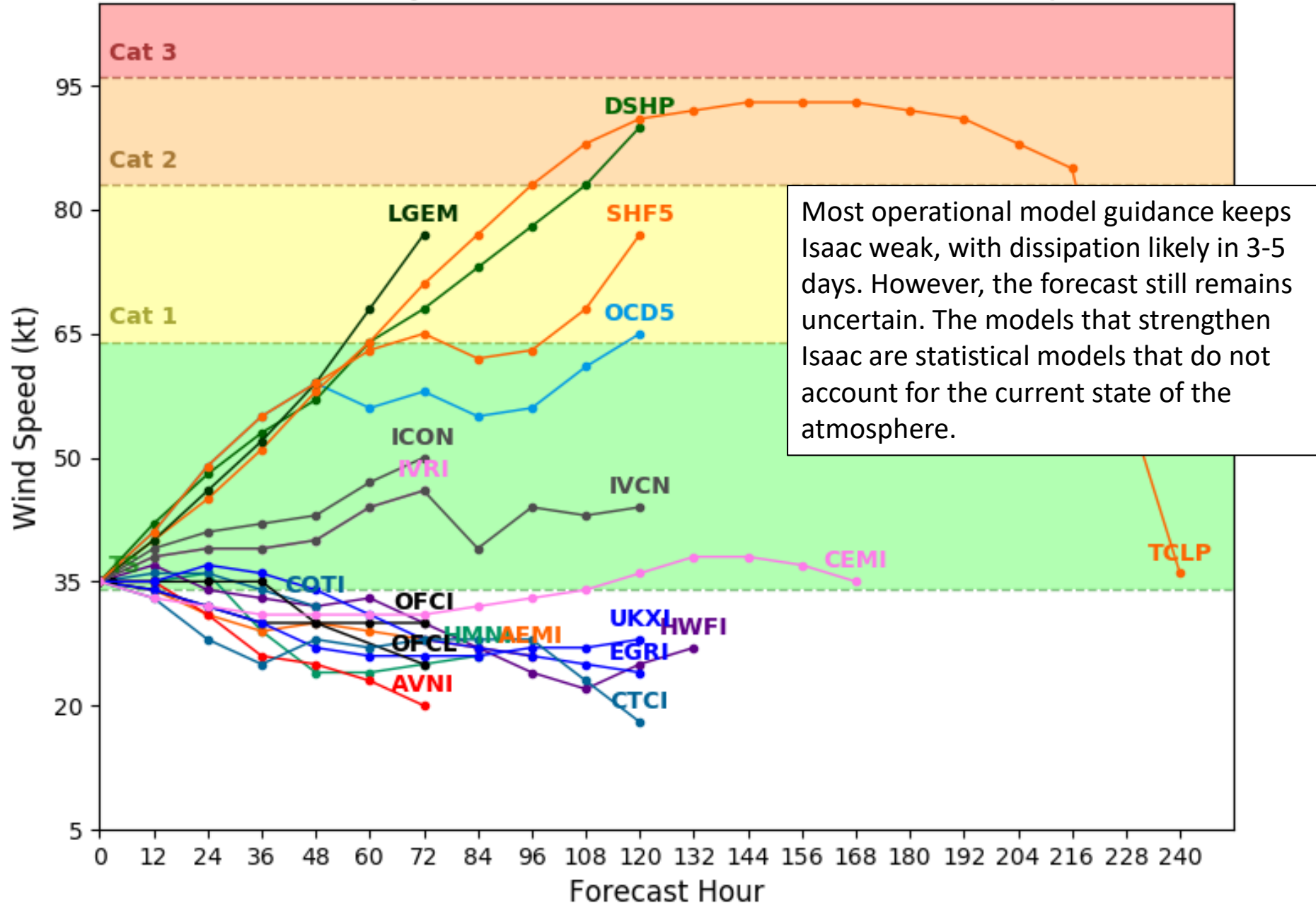
Levi Cowan - tropicaltidbits.com

DO NOT USE THIS MAP
TO MAKE DECISIONS!
SEEK OFFICIAL INFO

Computer models are in general agreement on the track of Isaac through 2-3 days. However, the track will depend on Isaac's survival through the Caribbean. A weaker/disorganized Isaac will likely stay further south and head further west. A stronger/more organized Isaac will stay further north and could curve northwestward.

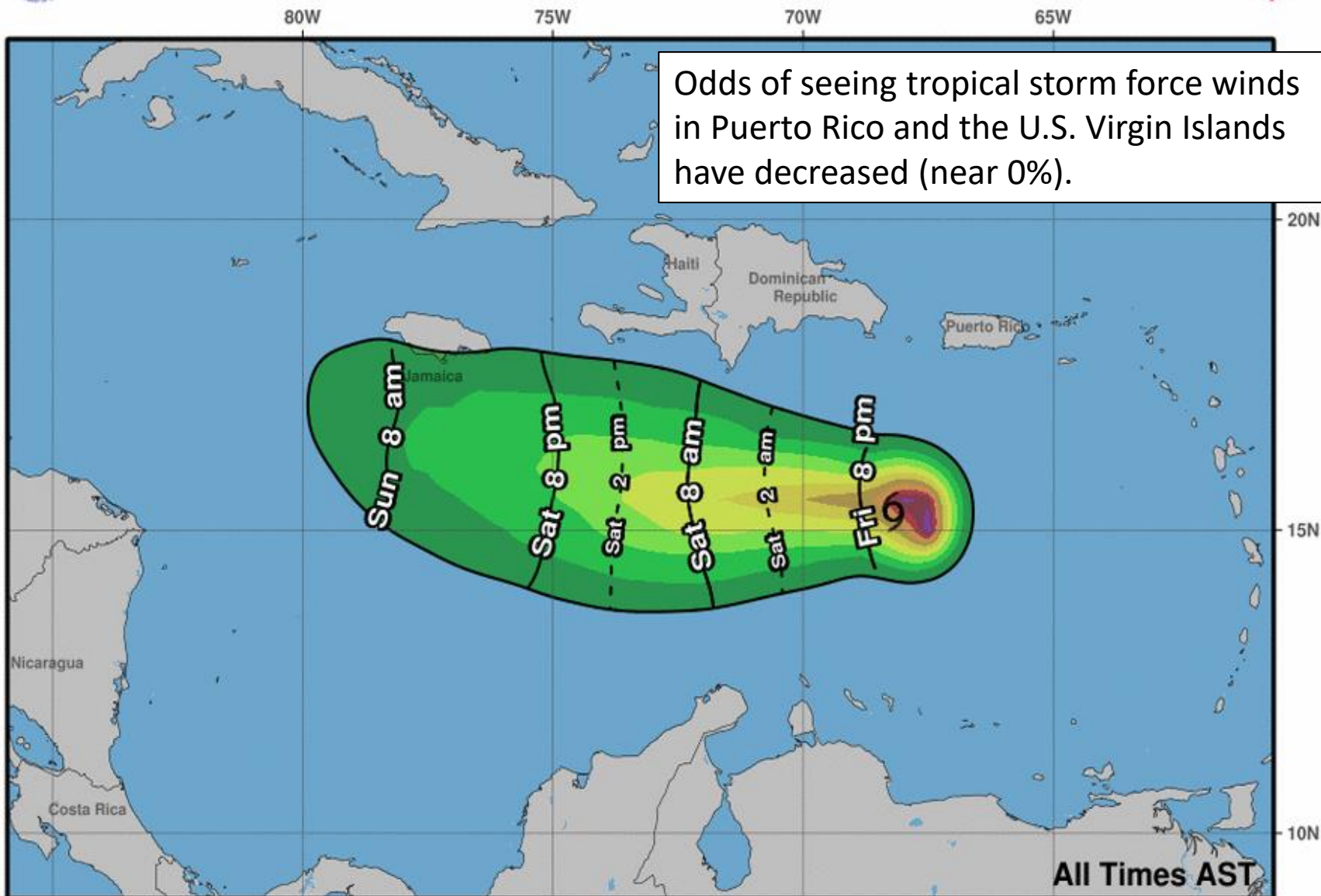


Levi Cowan - tropicaltidbits.com





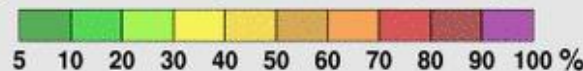
Earliest Reasonable Arrival Time of Tropical-Storm-Force Winds



Tropical Storm Isaac
Fri. Sep. 14, 2018 5 pm AST
Advisory 29

Storm Location & Wind Speed
○ < 34 kt (39 mph)
○ 34-63 kt (39-73 mph)
● ≥ 64 kt (74 mph)

5-day chance of receiving sustained 34+ kt (39+ mph) winds



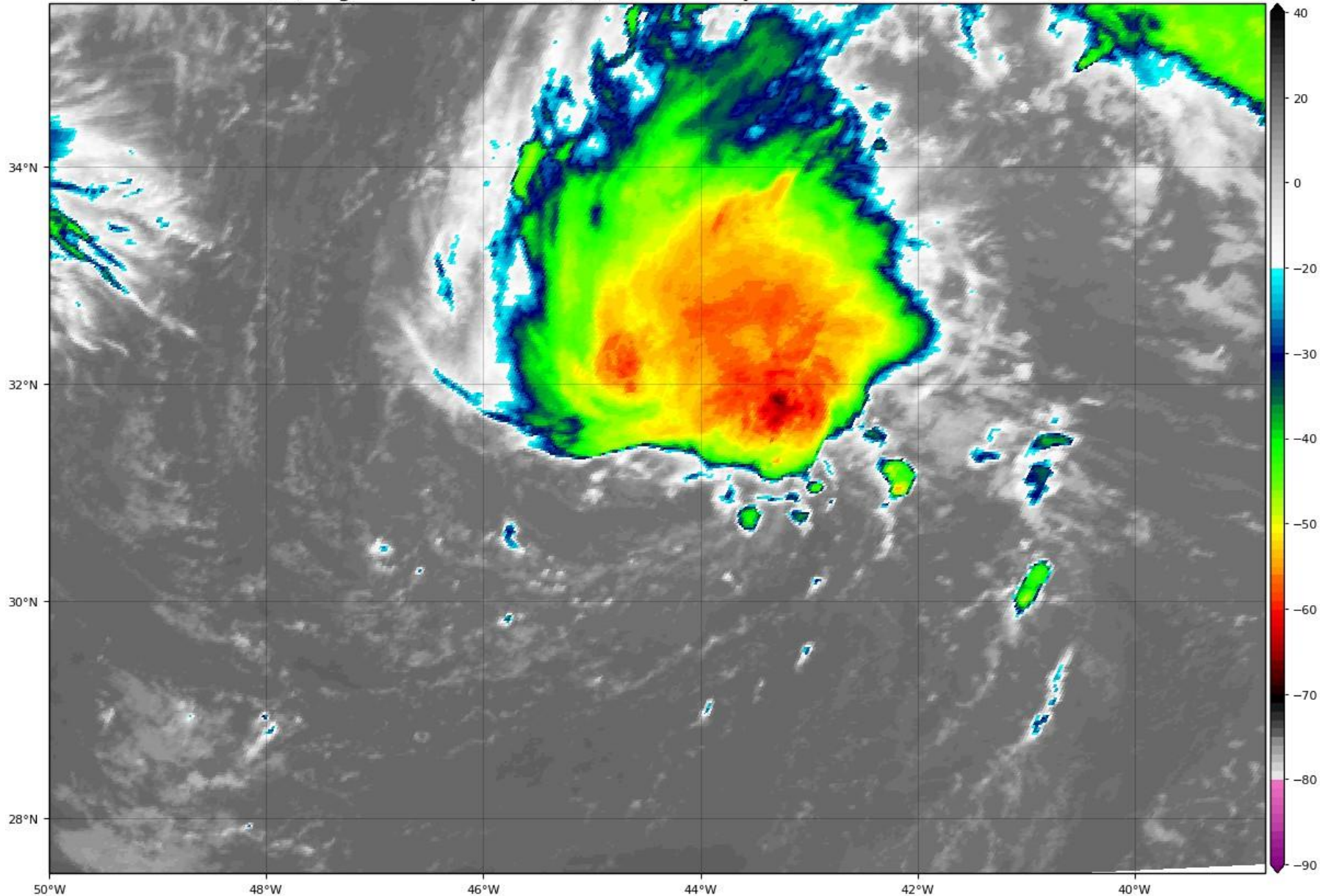
The areas with the highest rainfall accumulations are expected to be across the eastern half of Puerto Rico with particular emphasis in the southeastern sections, where 2 to 4 inches are possible with isolated higher amounts. The USVI will experience brief moments of heavy rain and rainfall totals of 1 to 2 inches are expected.



Tropical Storm Joyce Satellite Image

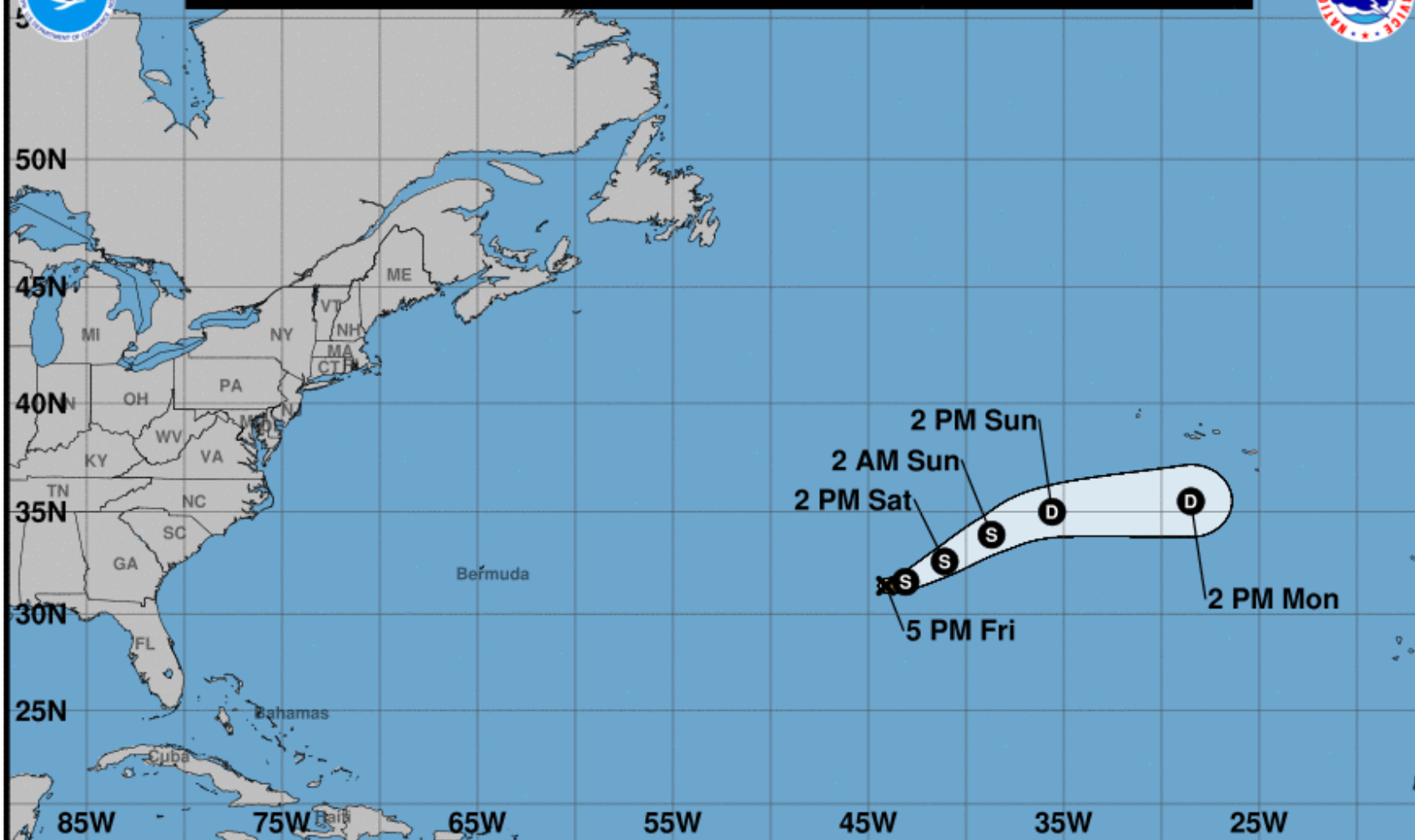
GOES-16 Channel 13 (IR) Brightness Temperature (°C) at 19:35Z Sep 14, 2018

TROPICALTIDBITS.COM





Note: The cone contains the probable path of the storm center but does not show the size of the storm. Hazardous conditions can occur outside of the cone.



Tropical Storm Joyce

Friday September 14, 2018

5 PM AST Advisory 9

NWS National Hurricane Center

Current information: x

Center location 31.4 N 44.1 W

Maximum sustained wind 45 mph

Movement SE at 6 mph

Forecast positions:

● Tropical Cyclone ○ Post/Potential TC

Sustained winds: D < 39 mph

S 39-73 mph H 74-110 mph M > 110 mph

Potential track area:

Day 1-3 Day 4-5

Watches:

Hurricane Trop Stm

Warnings:

Hurricane Trop Stm

Current wind extent:

Hurricane Trop Stm

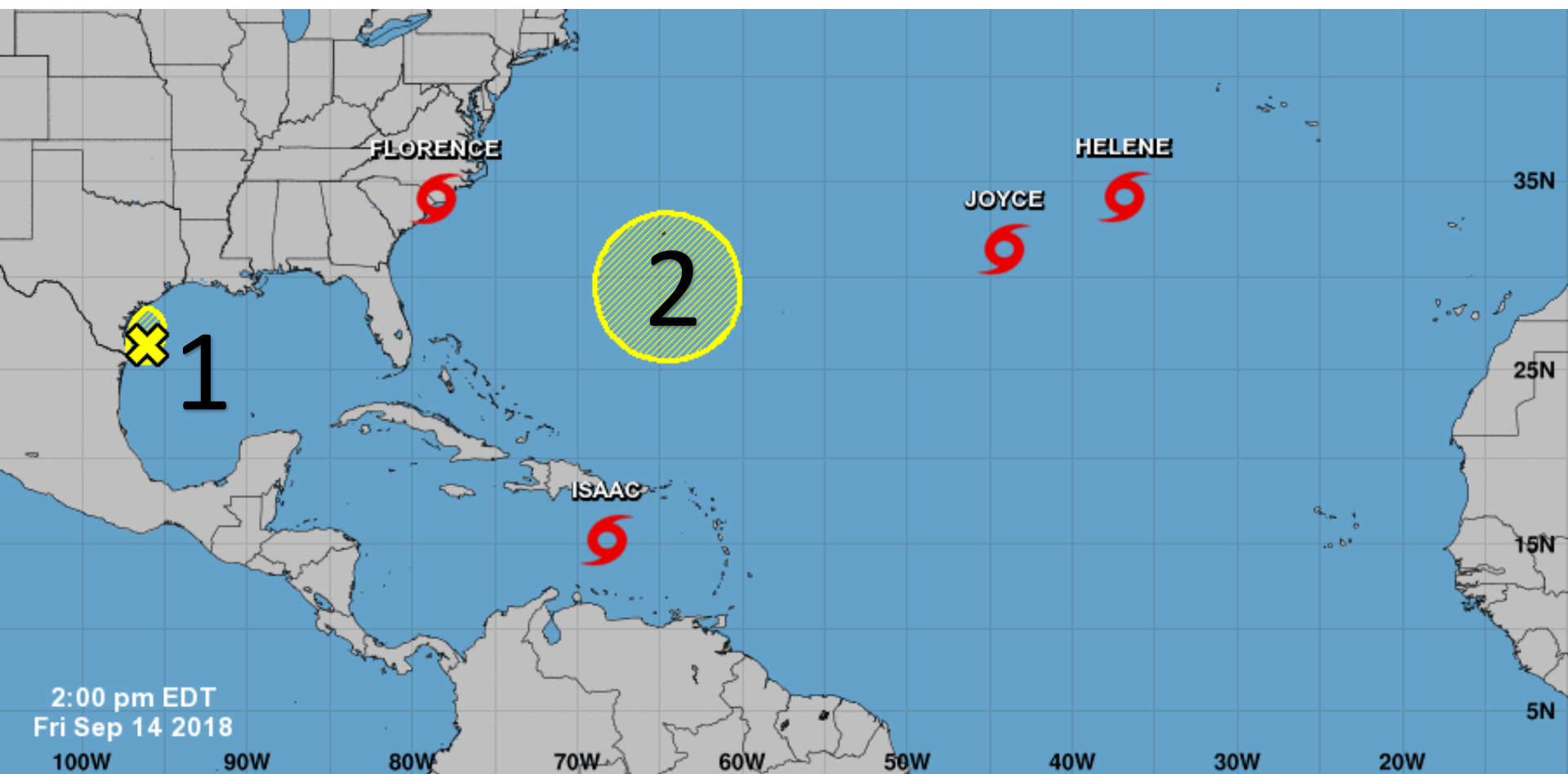


Five-Day Graphical Tropical Weather Outlook

National Hurricane Center Miami, Florida



1. An elongated area of low pressure located over the western Gulf of Mexico will probably not develop into a tropical depression before it moves onshore of Texas. * Formation chance through 48 hours...low...10 percent. * Formation chance through 5 days...low...10 percent.
2. A broad area of low pressure could form near Bermuda late this weekend or early next week. Additional development, if any, is expected to be slow while the system moves little. * Formation chance through 48 hours...low...near 0 percent. * Formation chance through 5 days...low...10 percent.

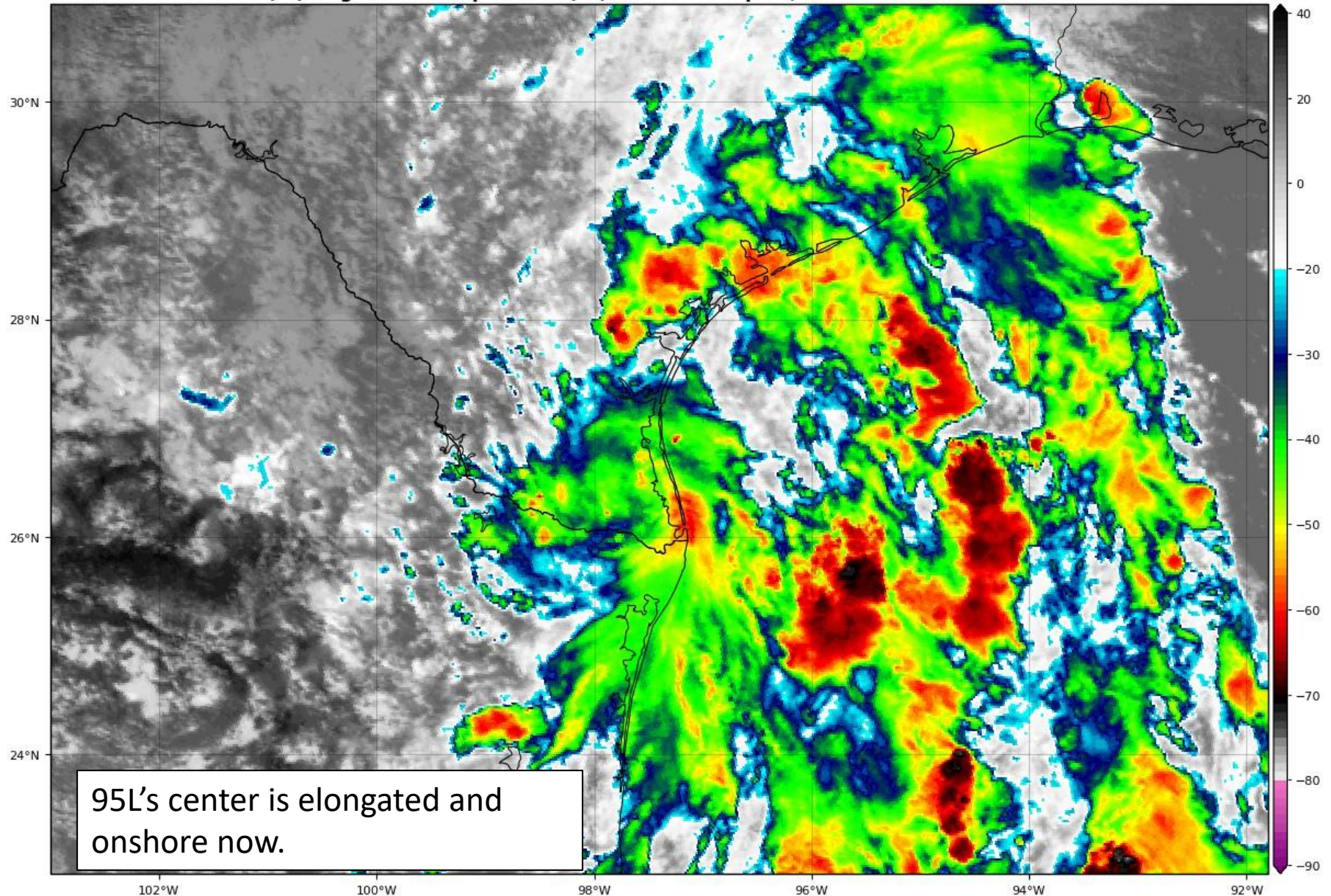


Current Disturbances and Five-Day Cyclone Formation Chance: < 40% 40-60% > 60%
Tropical or Sub-Tropical Cyclone: Depression Storm Hurricane
 Post-Tropical Cyclone or Remnants

Invest 95L Satellite Image

GOES-16 Channel 13 (IR) Brightness Temperature (°C) at 19:18Z Sep 14, 2018

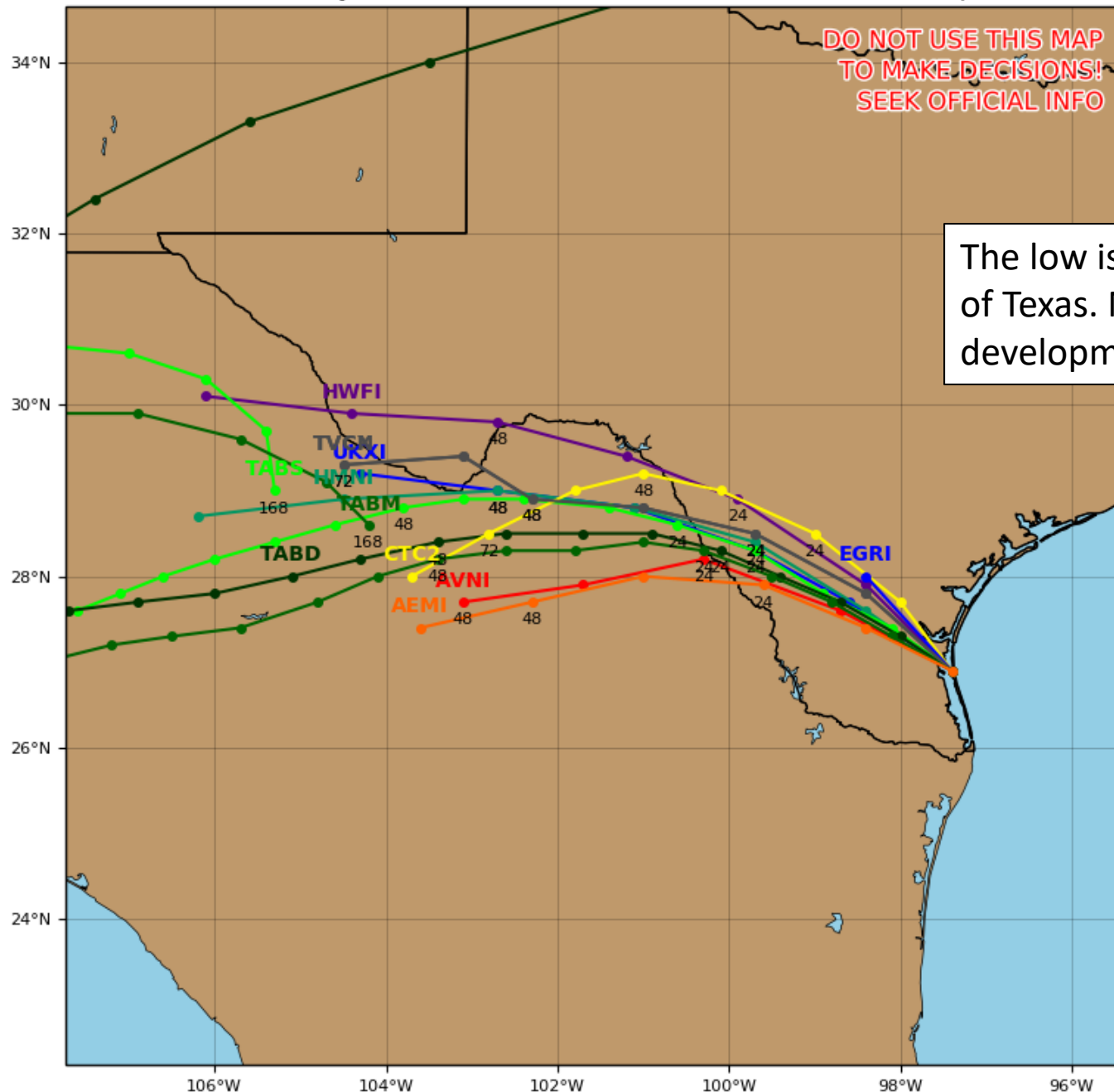
TROPICALTIDBITS.COM



Invest 95L Model Track Guidance

Initialized at 18z Sep 14 2018

Levi Cowan - tropicaltidbits.com



DO NOT USE THIS MAP
TO MAKE DECISIONS!
SEEK OFFICIAL INFO

The low is located on the coast
of Texas. No chance for
development.

Summary

Florence:

- At 5 PM EDT Friday, Hurricane Florence was located 50 miles west-southwest of Wilmington, North Carolina, or 25 miles northeast of Myrtle Beach, South Carolina.
- Florence's winds have decreased to 70 mph, making it a strong tropical storm.
- Florence still has a very large wind field of tropical storm force winds extending up to 175 miles from the center
- Florence has slowed down considerably, moving to the west at 3 mph. A continued slow west or southwest drift is expected tonight into Saturday.
- Florence will then slowly drift west or west-southwest through Saturday across South Carolina under very light steering currents while gradually weakening before finally being pulled north on Sunday and Monday.

Helene:

- At 5 PM EDT Friday, Helene remains a tropical storm with winds of 70 mph while racing north at 18 mph.
- Helene's intensity will remain nearly steady over the next several days, and Tropical Storm Warnings are in effect for the Azores.

Isaac:

- At 5 PM EDT Friday, Isaac re-strengthened to a tropical storm with maximum sustained winds of 40 mph. Isaac is located 250 miles south-southeast of Santo Domingo, Dominican Republic, moving west at 14 mph.
- This motion is expected to continue through the next 2 days before moving more to the west-northwest early next week.
- Isaac is forecast to degenerate into a tropical wave by Monday or Tuesday in the central or western Caribbean.
- There is still some model disagreement on dissipation in 3-4 days and some suggest the remnants of Isaac or a weak system could enter the southern Gulf of Mexico in 5-6 days. The chances of this happening is currently low and therefore not reflected in the official forecast.
- Some locally heavy rainfall and high seas are possible as Isaac passes south of Puerto Rico on Friday.
- A Flash Flood Watch is in effect for approximately 50% of Puerto Rico, and a High Surf Advisory is in effect for the Virgin Islands and southeastern parts of Puerto Rico.

Joyce:

- Tropical Storm Joyce is located in the far north central Atlantic with maximum sustained winds of 40 mph.
- Joyce will meander in the north central Atlantic before moving toward the northeast and gradually weakening this weekend.

Other Disturbances:

- A weak low pressure center (designated as Invest 95L) is near the mouth of the Rio Grande. However, showers and thunderstorms remain disorganized.
- While conditions are conducive for development of a tropical depression, the system is very near or onshore. The National Hurricane Center gives this system a 10% chance of formation, but that will drop to zero once the system moves ashore in south Texas..
- An area of low pressure is expected to develop near Bermuda late this weekend or early next week. Some gradual development is possible after that time while the system drifts westward over the western Atlantic.
- The chances for development have decreased to near 10%.
- The next name on the list is Kirk, or if it becomes a tropical depression or potential tropical cyclone, the number would be #11.

Florida Outlook:

- Chances of direct impacts to Northeast Florida from Florence remain very low, with a less than 5% chance of experiencing tropical storm force winds. Gusts near 20 mph are possible near the Northeast Florida coast on Saturday.
- Large swells emanating from the storm will continue to impact the Florida East Coast through weekend, resulting in life-threatening rip currents.
- A Coastal Flood Advisory is in effect through this evening for Nassau, Duval, St. Johns, and Flagler Counties. Minor coastal flooding at high tide will be possible.
- Tropical Storm Isaac should continue to be monitored over the next 5-7 days as it moves through the Caribbean, but is not a direct threat to Florida at this time.
- Tropical Storm Helene, Tropical Storm Joyce, Invest 95L in the Gulf and the developing low near Bermuda pose no threat to the Florida at this time.

With Florence now onshore in the Carolinas, tropics packets will be reduced to once a day and issued once a day during the late morning. The next packet will be released late Saturday morning. For the latest information on the tropics, please visit the National Hurricane Center website at www.hurricanes.gov.



TROPICAL UPDATE

Created by:

Cameron Young, Assistant State Meteorologist

Cameron.Young@em.myflorida.com

State Meteorological Support Unit

Florida Division of Emergency
Management

Users wishing to subscribe (approval pending) to this distribution list, register at https://public.govdelivery.com/accounts/FLDEM/subscriber/new?topic_id=SERT_Met_Tropics.

Other reports available for subscription are available at

<https://public.govdelivery.com/accounts/FLDEM/subscriber/new?preferences=true>