



TROPICAL UPDATE

6 PM EDT

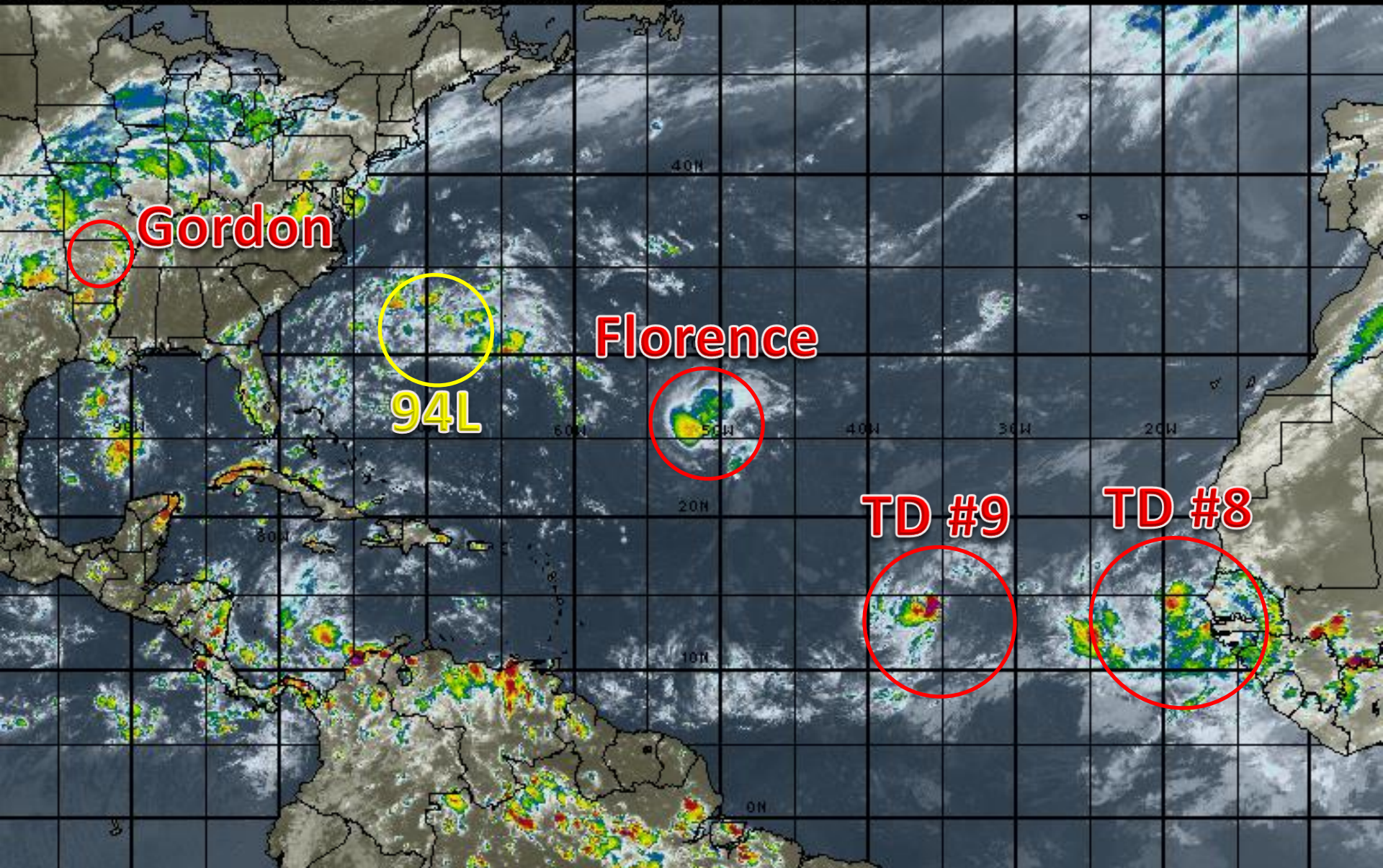
Friday, September 7, 2018

**Tropical Depression Gordon, Tropical Storm
Florence, Tropical Depression #8, Tropical
Depression #9, Invest 94L (20%)**

This update is intended for government and emergency response officials, and is provided for informational and situational awareness purposes only. Forecast conditions are subject to change based on a variety of environmental factors. For additional information, or for any life safety concerns with an active weather event please contact your County Emergency Management or Public Safety Office, local National Weather Service forecast office or visit the National Hurricane Center website at www.nhc.noaa.gov.

Atlantic Basin Satellite Image

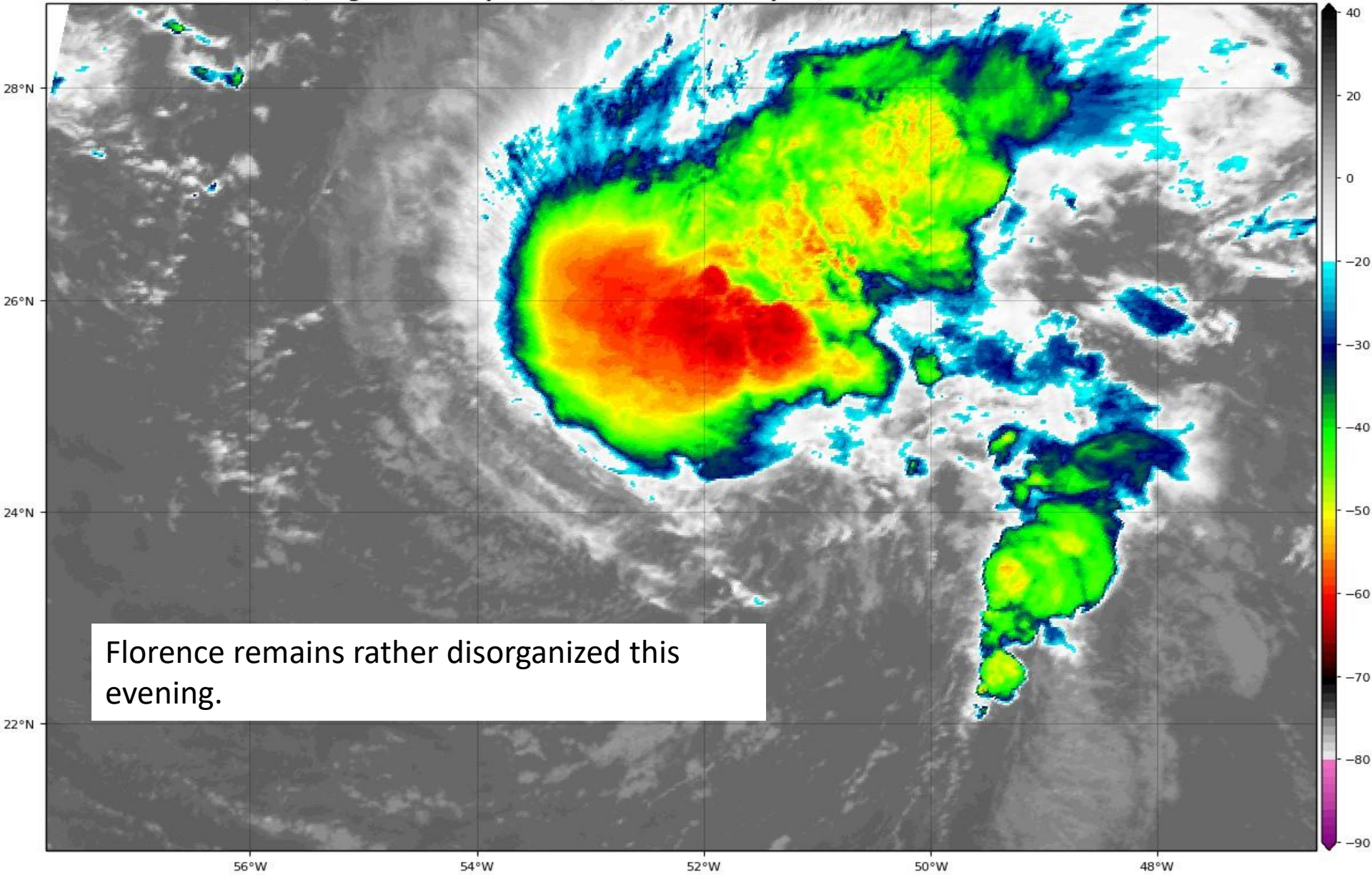
21:00 07-SEP-2018 GMT Copyright © 1998-2018 MSI Corporation <http://www.wsi.com>



TS Florence Satellite Image

GOES-16 Channel 13 (IR) Brightness Temperature (°C) at 21:35Z Sep 07, 2018

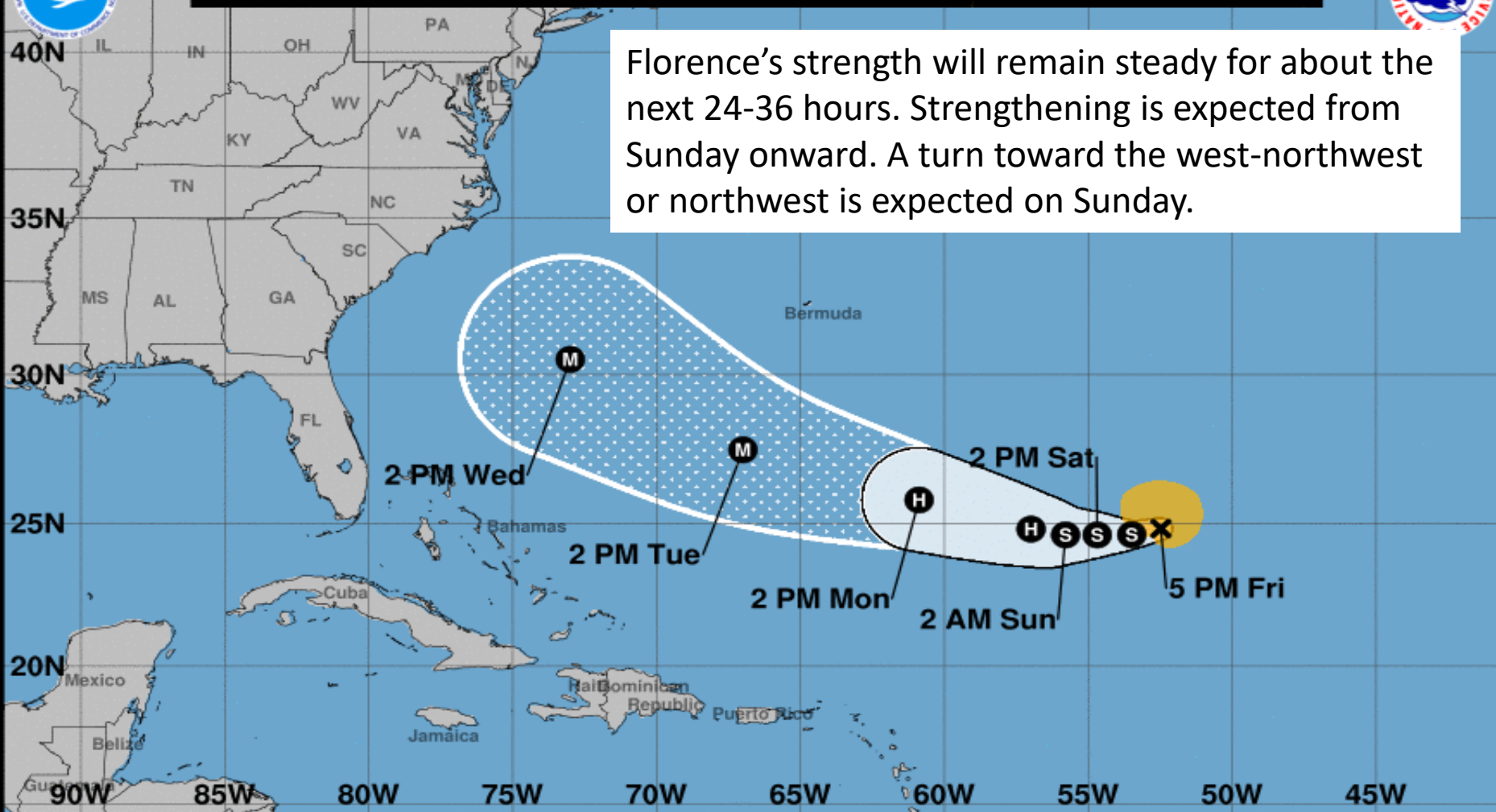
TROPICALTIDBITS.COM





Note: The cone contains the probable path of the storm center but does not show the size of the storm. Hazardous conditions can occur outside of the cone.

Florence's strength will remain steady for about the next 24-36 hours. Strengthening is expected from Sunday onward. A turn toward the west-northwest or northwest is expected on Sunday.



Tropical Storm Florence

Friday September 07, 2018

5 PM AST Advisory 34

NWS National Hurricane Center

Current information: X

Center location 24.8 N 52.5 W

Maximum sustained wind 65 mph

Movement W at 8 mph

Forecast positions:

● Tropical Cyclone ○ Post/Potential TC

Sustained winds: D < 39 mph

S 39-73 mph H 74-110 mph M > 110 mph

Potential track area:

Day 1-3 Day 4-5

Watches:

Hurricane Trop Stm

Warnings:

Hurricane Trop Stm

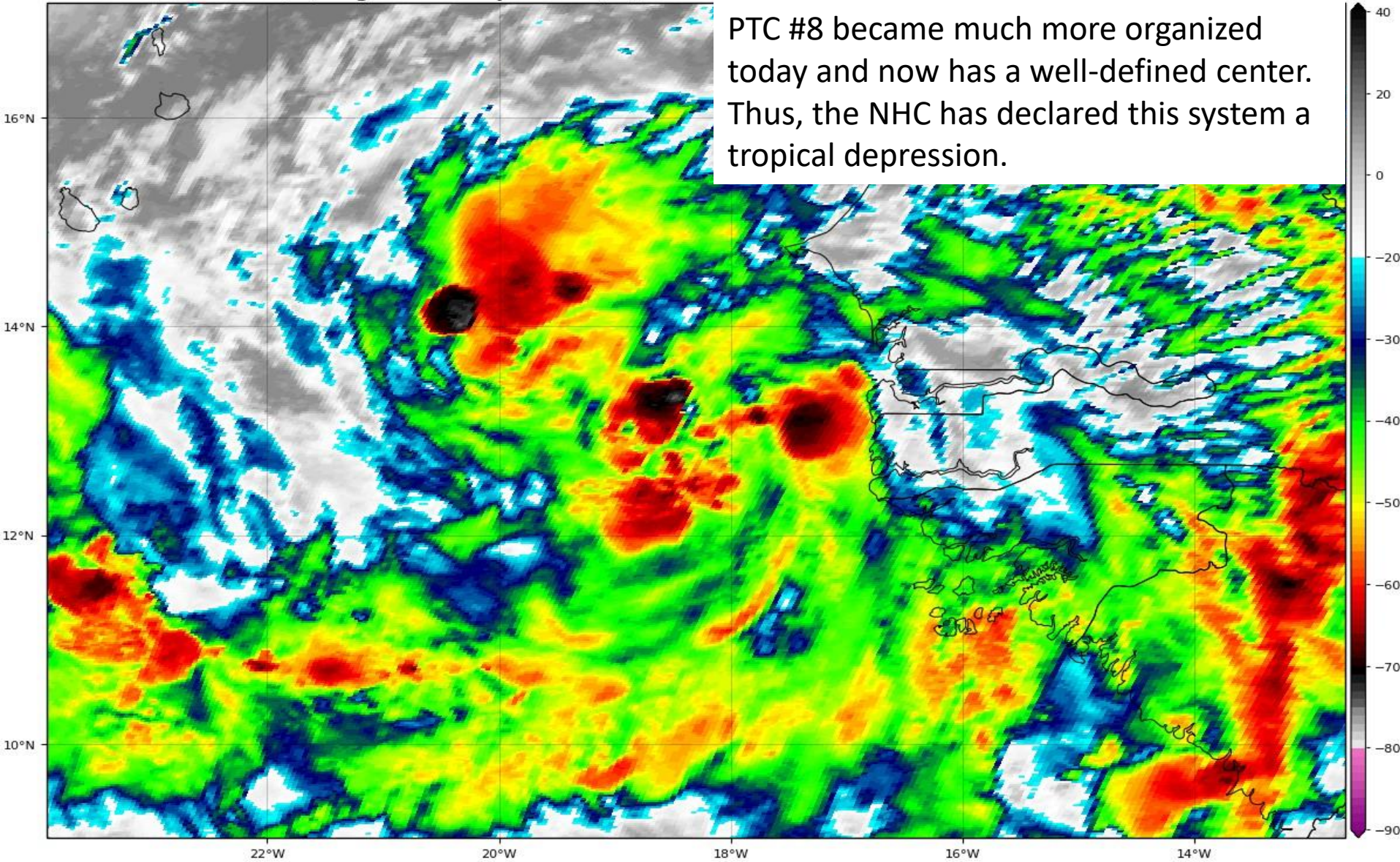
Current wind extent:

Hurricane Trop Stm

Tropical Depression #8 Satellite Image

GOES-16 Channel 13 (IR) Brightness Temperature (°C) at 21:35Z Sep 07, 2018

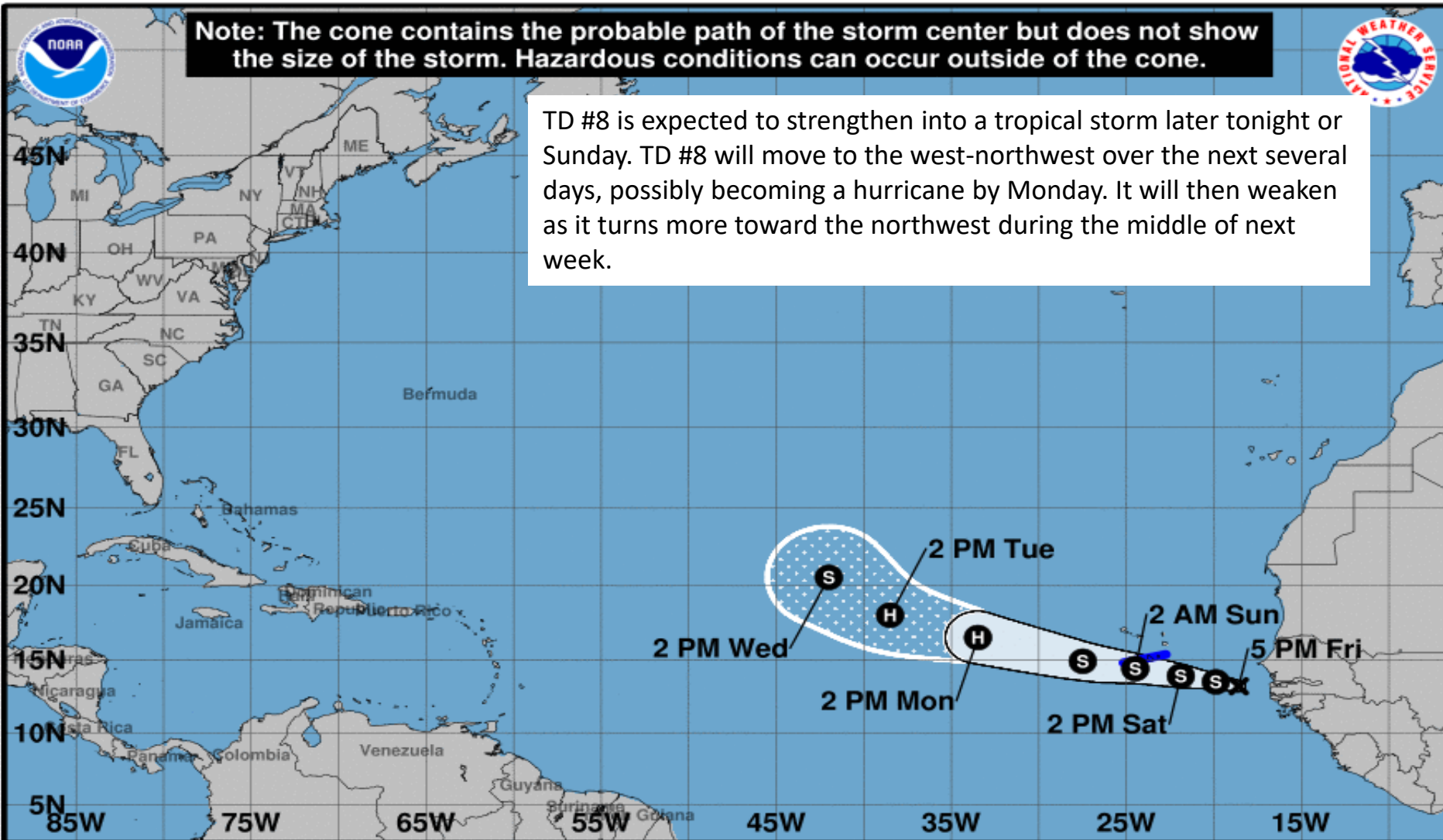
TROPICALTIDBITS.COM





Note: The cone contains the probable path of the storm center but does not show the size of the storm. Hazardous conditions can occur outside of the cone.

TD #8 is expected to strengthen into a tropical storm later tonight or Sunday. TD #8 will move to the west-northwest over the next several days, possibly becoming a hurricane by Monday. It will then weaken as it turns more toward the northwest during the middle of next week.



Tropical Depression Eight

Friday September 07, 2018

5 PM AST Advisory 2

NWS National Hurricane Center

Current information: x

Center location 13.2 N 18.6 W

Maximum sustained wind 35 mph

Movement W at 10 mph

Forecast positions:

● Tropical Cyclone ○ Post/Potential TC

Sustained winds: D < 39 mph

S 39-73 mph H 74-110 mph M > 110 mph

Potential track area:

Day 1-3 Day 4-5

Watches:

Hurricane Trop Stm

Warnings:

Hurricane Trop Stm

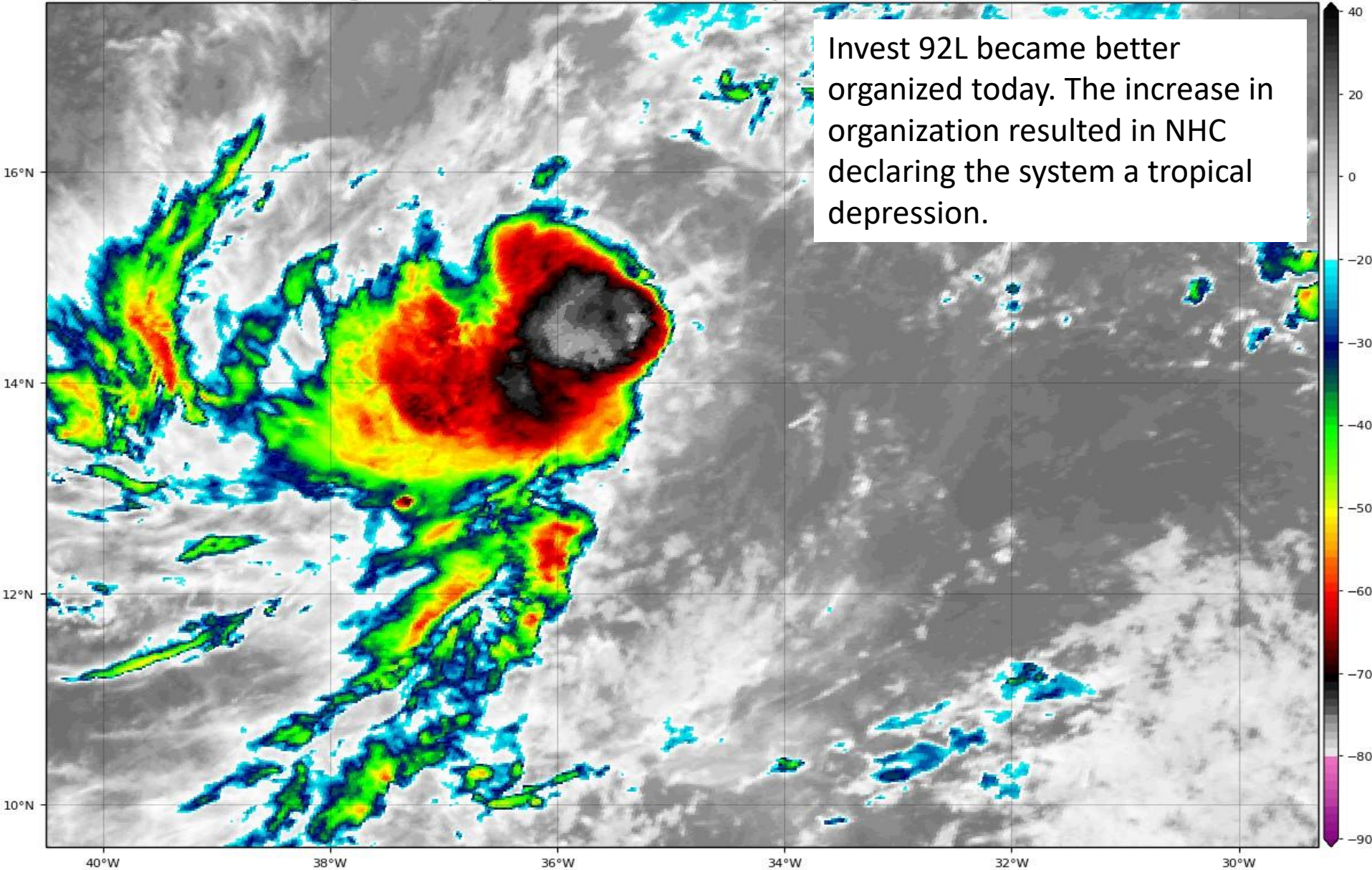
Current wind extent:

Hurricane Trop Stm

Tropical Depression #9 Satellite Image

GOES-16 Channel 13 (IR) Brightness Temperature (°C) at 21:35Z Sep 07, 2018

TROPICALTIDBITS.COM

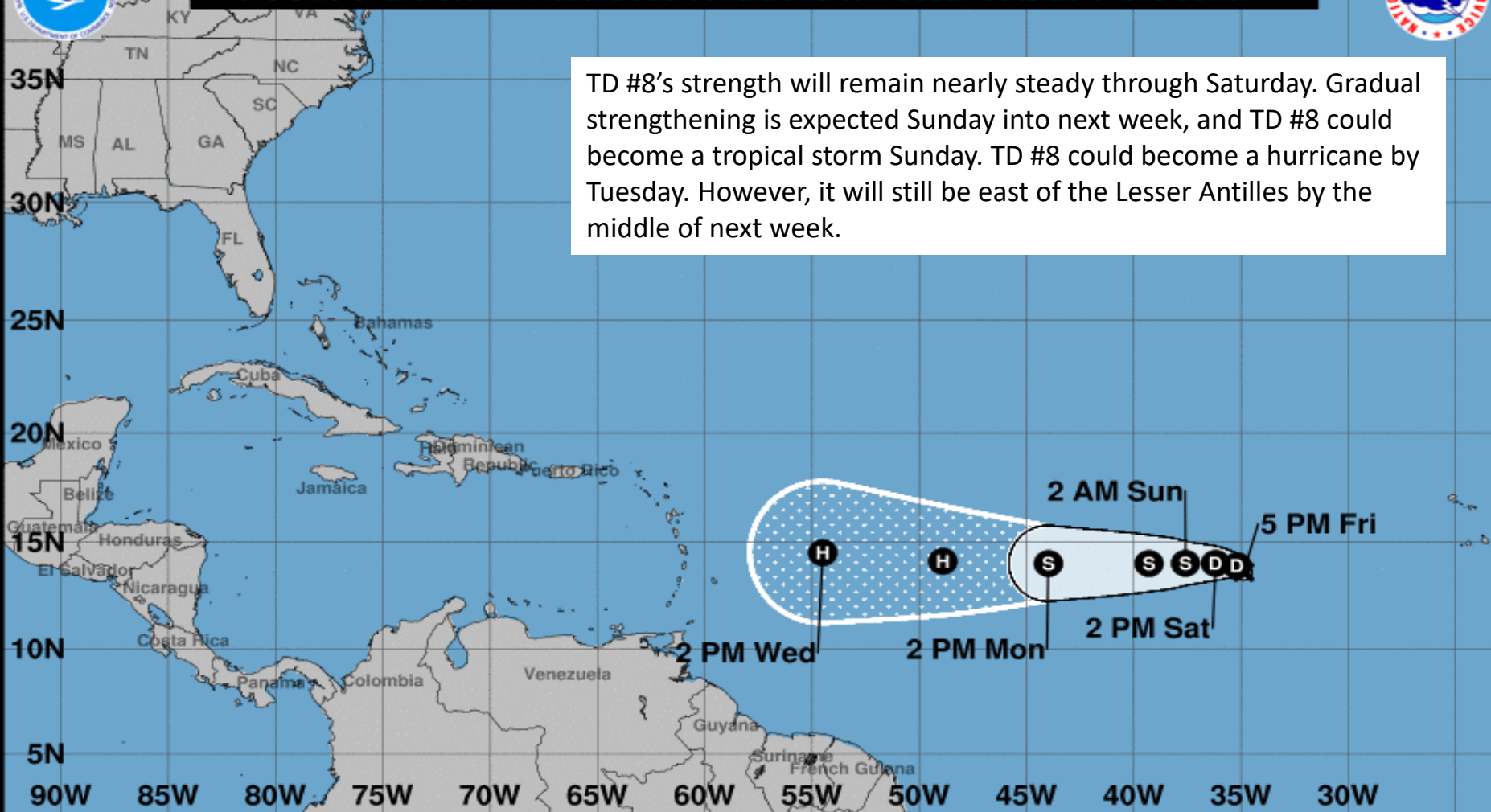




Note: The cone contains the probable path of the storm center but does not show the size of the storm. Hazardous conditions can occur outside of the cone.



TD #8's strength will remain nearly steady through Saturday. Gradual strengthening is expected Sunday into next week, and TD #8 could become a tropical storm Sunday. TD #8 could become a hurricane by Tuesday. However, it will still be east of the Lesser Antilles by the middle of next week.



Tropical Depression Nine

Friday September 07, 2018

5 PM AST Advisory 1

NWS National Hurricane Center

Current information: x

Center location 13.6 N 34.9 W

Maximum sustained wind 35 mph

Movement: Stationary

Forecast positions:

● Tropical Cyclone ○ Post/Potential TC

Sustained winds: D < 39 mph

S 39-73 mph H 74-110 mph M > 110 mph

Potential track area:

Day 1-3 Day 4-5

Watches:

Hurricane Trop Stm

Warnings:

Hurricane Trop Stm

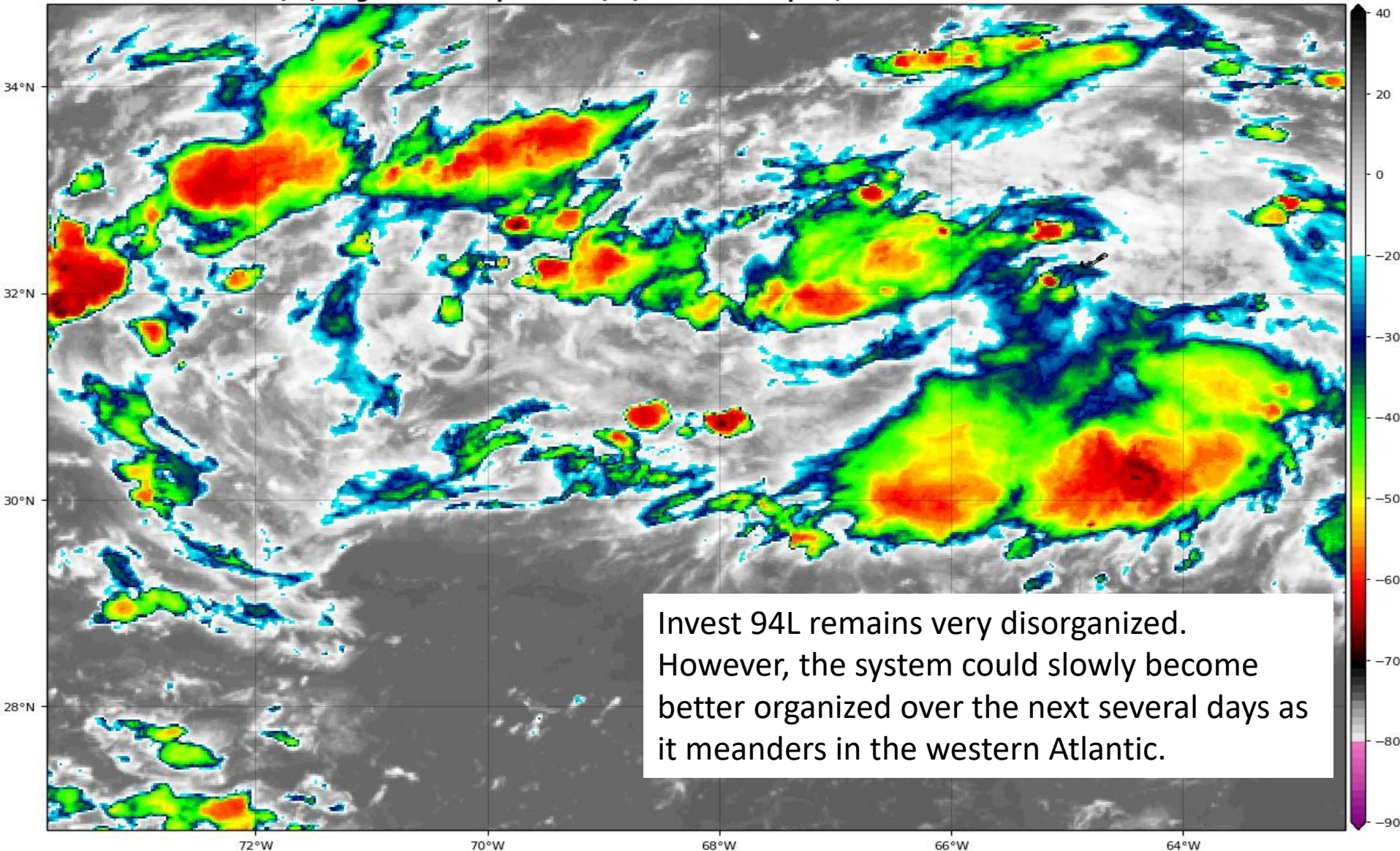
Current wind extent:

Hurricane Trop Stm

Invest 94L Satellite Image

GOES-16 Channel 13 (IR) Brightness Temperature (°C) at 21:53Z Sep 07, 2018

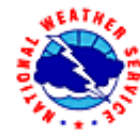
TROPICALTIDBITS.COM





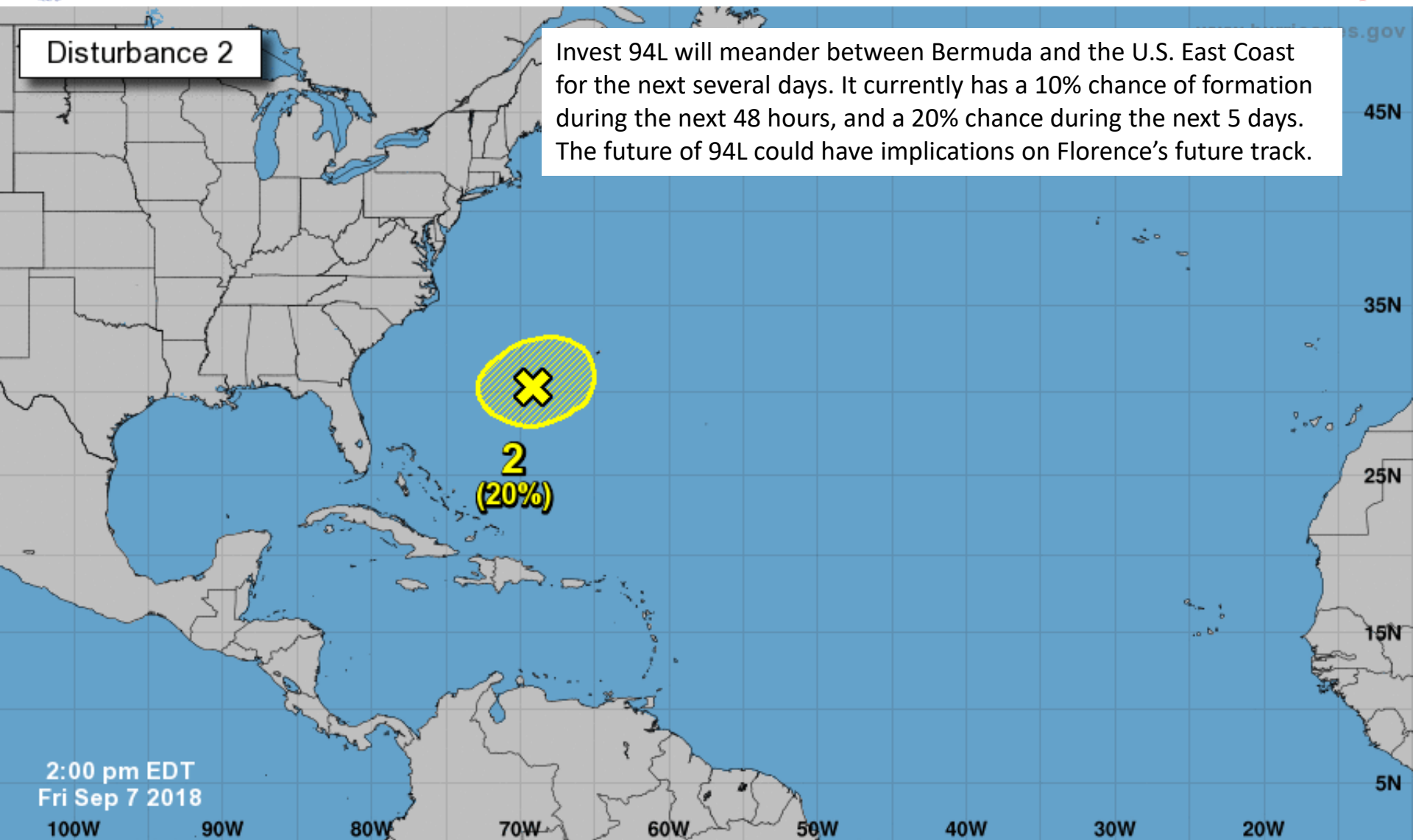
Five-Day Graphical Tropical Weather Outlook

National Hurricane Center Miami, Florida



Disturbance 2

Invest 94L will meander between Bermuda and the U.S. East Coast for the next several days. It currently has a 10% chance of formation during the next 48 hours, and a 20% chance during the next 5 days. The future of 94L could have implications on Florence's future track.



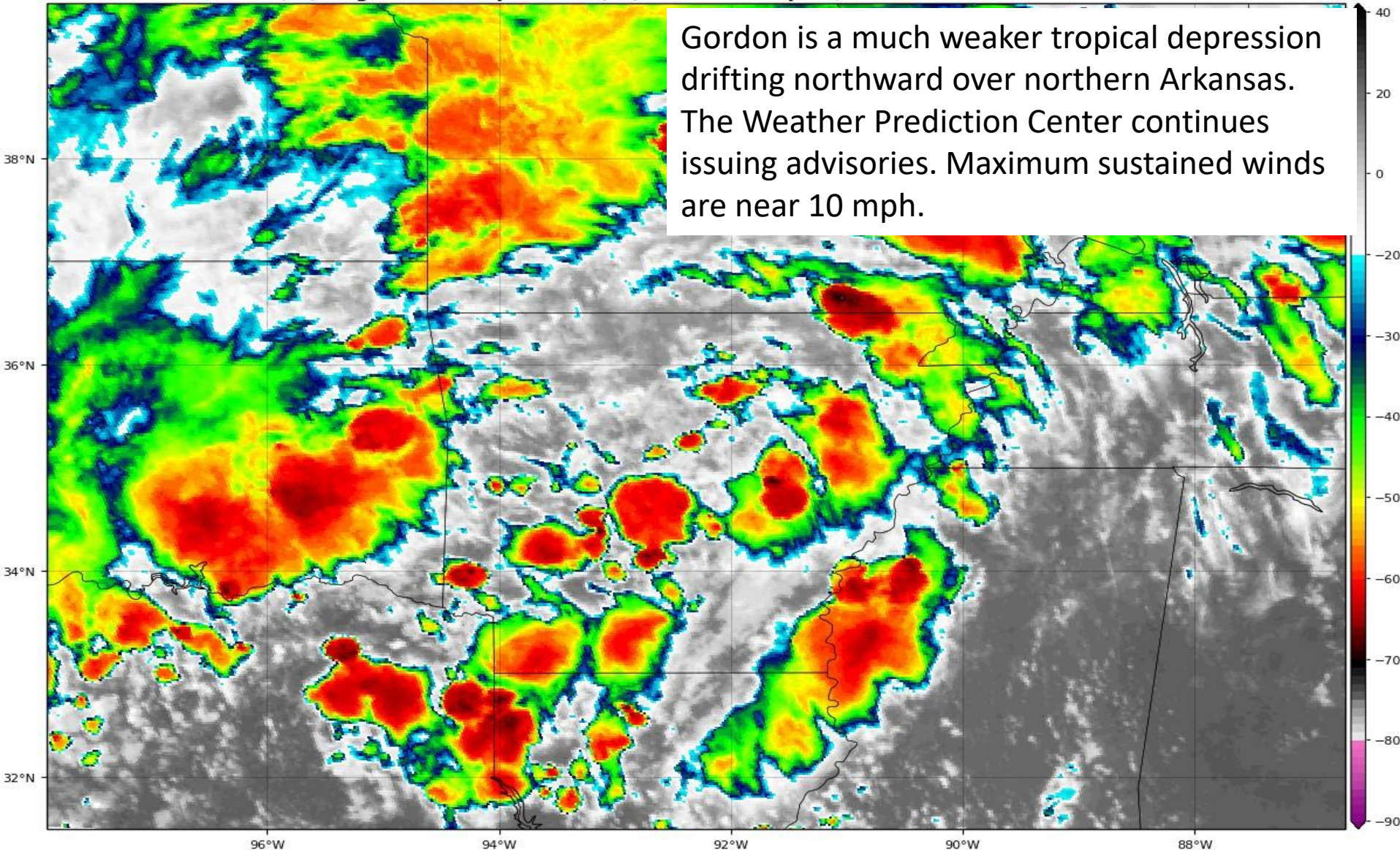
2:00 pm EDT
Fri Sep 7 2018

Current Disturbances and Five-Day Cyclone Formation Chance: < 40% 40-60% > 60%
Tropical or Sub-Tropical Cyclone: Depression Storm Hurricane
 Post-Tropical Cyclone or Remnants

TD Gordon Satellite Image

GOES-16 Channel 13 (IR) Brightness Temperature (°C) at 22:03Z Sep 07, 2018

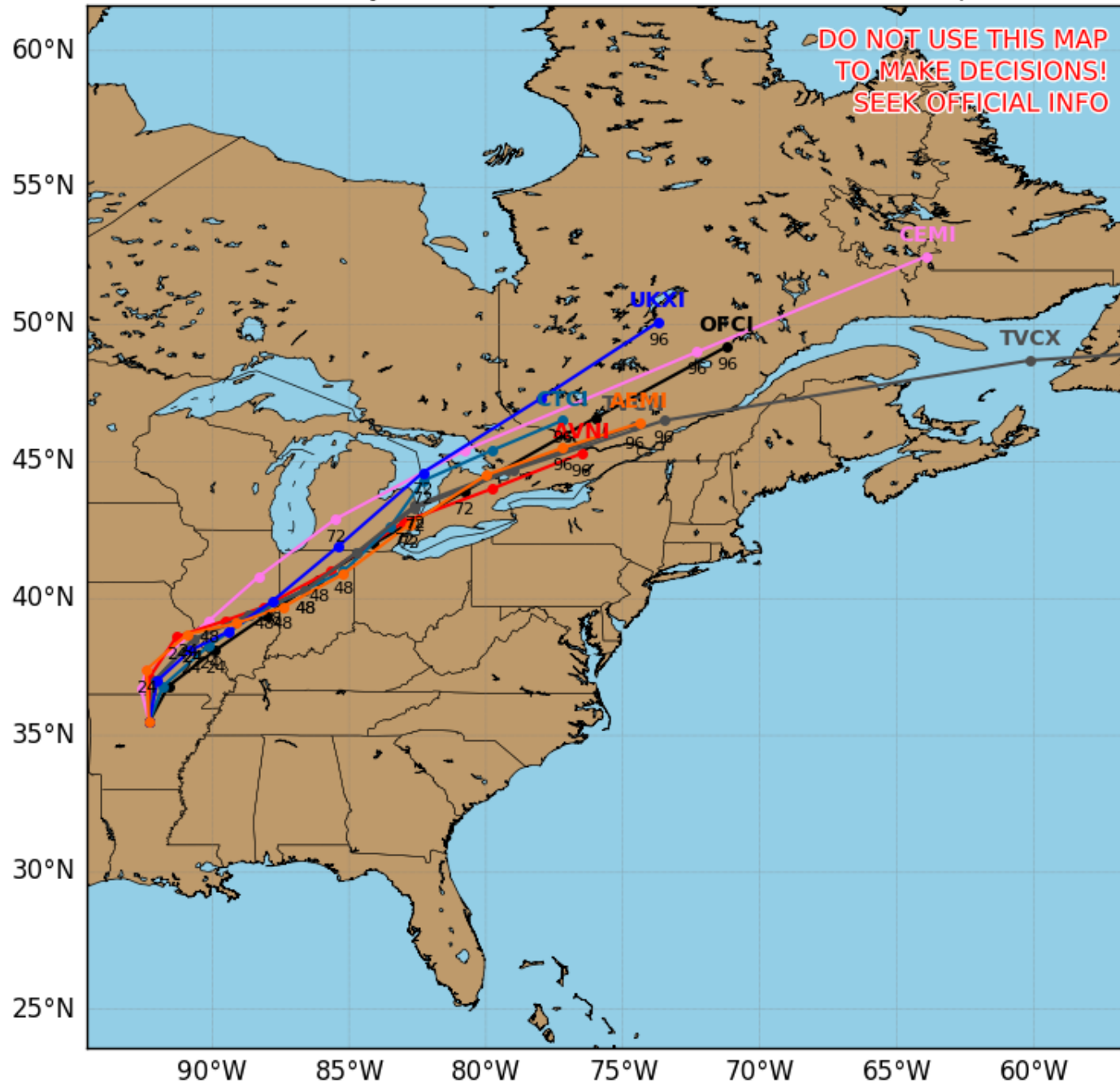
TROPICALTIDBITS.COM



Remnants of GORDON Model Track Guidance

Initialized at 18z Sep 07 2018

Levi Cowan - tropica1tidbits.com



Gordon (or its remnants) will slowly move into Missouri later today before being absorbed by a front.



TROPICAL UPDATE

Created by:

Cameron Young, Assistant State Meteorologist

Cameron.Young@em.myflorida.com

State Meteorological Support Unit

Florida Division of Emergency
Management

Users wishing to subscribe (approval pending) to this distribution list, register at https://public.govdelivery.com/accounts/FLDEM/subscriber/new?topic_id=SERT_Met_Tropics.

Other reports available for subscription are available at

<https://public.govdelivery.com/accounts/FLDEM/subscriber/new?preferences=true>