



# **TROPICAL UPDATE**

**9 AM EDT**

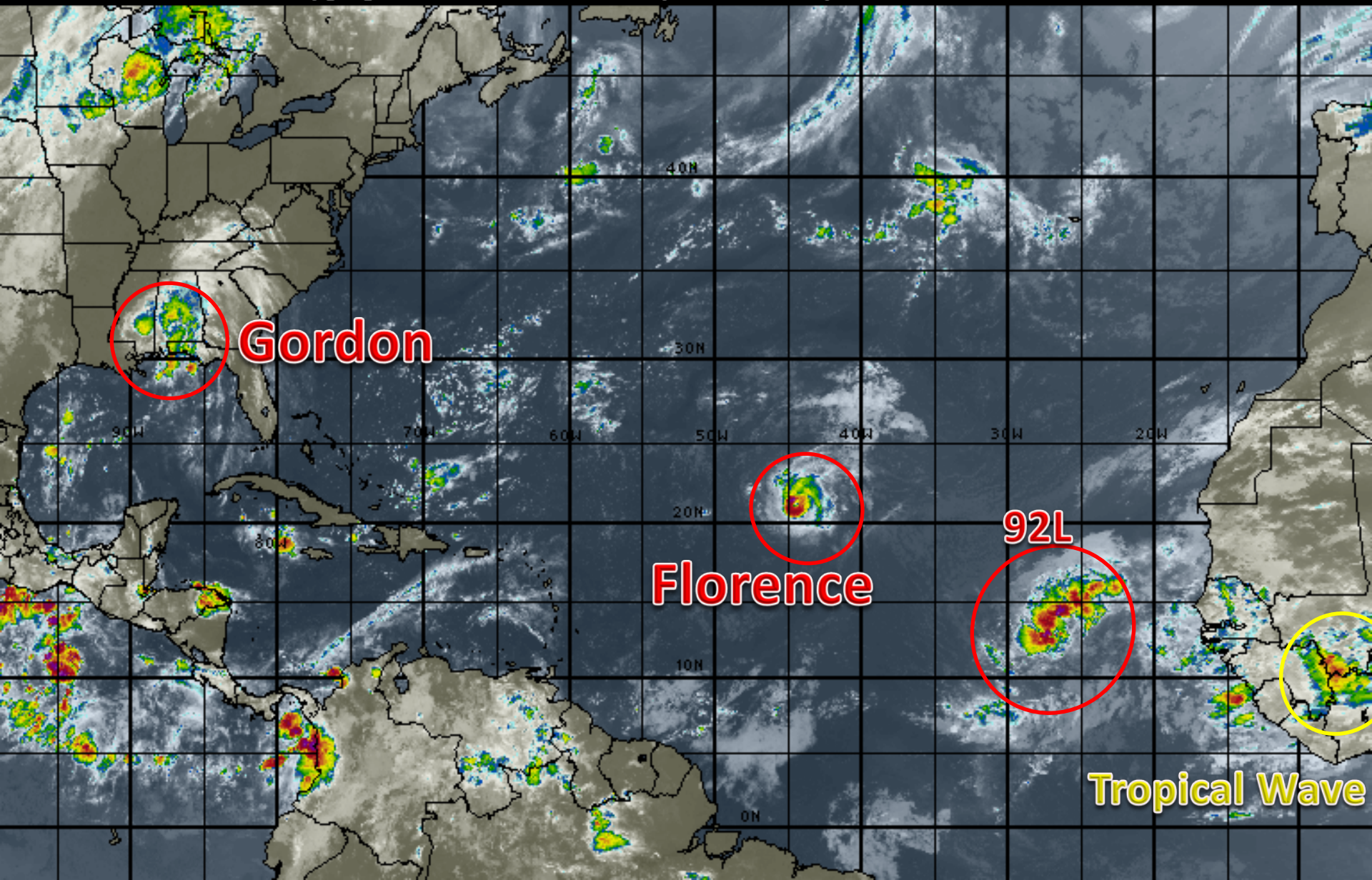
**Wednesday, September 5, 2018**

**Major Hurricane Florence, Tropical Depression  
Gordon, Invest 92L (90%) & African Tropical Wave  
(20%)**

**This update is intended for government and emergency response officials, and is provided for informational and situational awareness purposes only. Forecast conditions are subject to change based on a variety of environmental factors. For additional information, or for any life safety concerns with an active weather event please contact your County Emergency Management or Public Safety Office, local National Weather Service forecast office or visit the National Hurricane Center website at [www.nhc.noaa.gov](http://www.nhc.noaa.gov).**

# Atlantic Basin Satellite Image

09:00 05-SEP-2018 GMT Copyright © 1998-2018 WSI Corporation <http://www.wsi.com>





# Five-Day Graphical Tropical Weather Outlook

National Hurricane Center Miami, Florida



## All Disturbances

The National Hurricane Center is issuing advisories on Hurricane Florence, located over the east-central Atlantic Ocean, and on Tropical Depression Gordon, located over southern Mississippi.

An area of low pressure accompanied by disorganized clouds and showers is near the Cabo Verde Islands. Conditions are forecast to become conducive for development, and a tropical depression is expected to form by the end of the week while the system moves west-northwestward across the tropical Atlantic Ocean.

\* Formation chance through 48 hours...medium...40 percent.

\* Formation chance through 5 days...high...90 percent.

A tropical wave is forecast to move off the west coast of Africa in a few days. Some development of the system is possible over the weekend while the wave moves westward over the far eastern tropical Atlantic Ocean.

\* Formation chance through 48 hours...low...near 0 percent.

\* Formation chance through 5 days...low...20 percent.

GORDON

FLORENCE

2:00 am EDT  
Wed Sep 5 2018

100W

90W

80W

70W

60W

50W

40W

30W

20W

25N

15N

5N

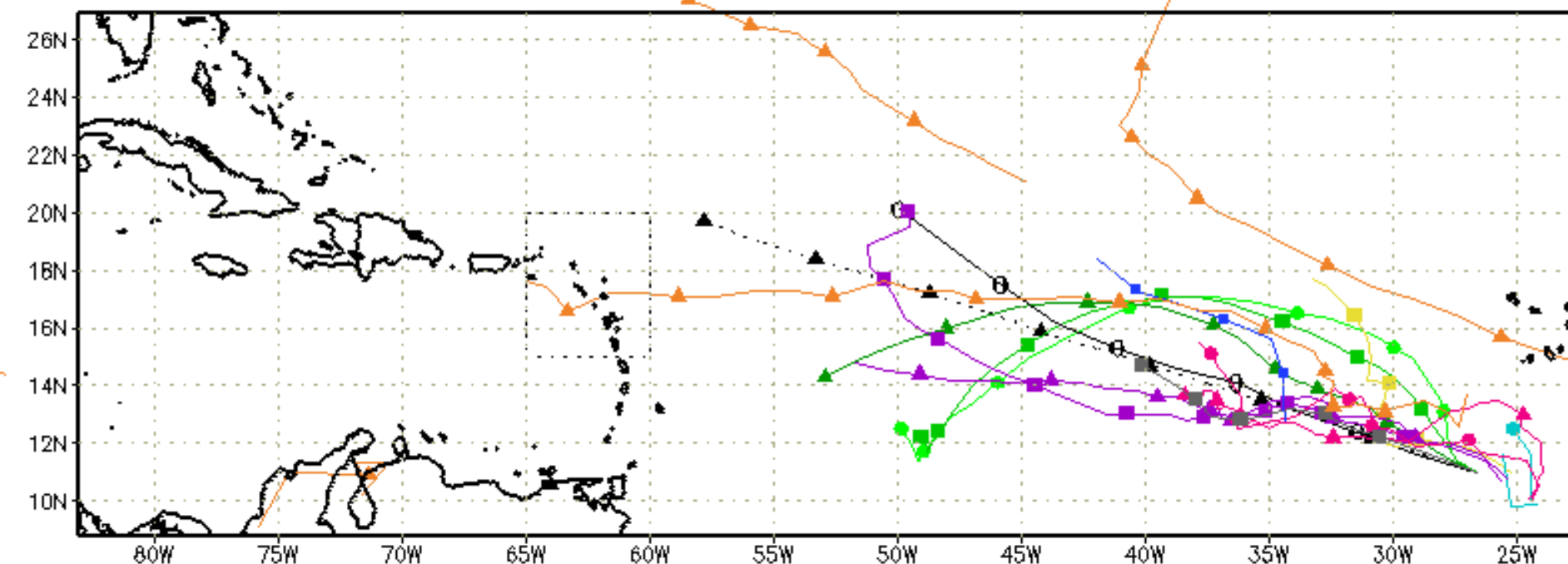
Current Disturbances and Five-Day Cyclone Formation Chance: < 40% 40-60% > 60%

Tropical or Sub-Tropical Cyclone: Depression Storm Hurricane

Post-Tropical Cyclone or Remnants



XTRP 05/0600Z TABD 05/0600Z HMON 04/1800Z AVNO 05/0000Z ECMF 05/0000Z  
 CLP5 05/0600Z TABM 05/0600Z HWRF 04/1800Z AEMN 05/0000Z EEMN 05/0000Z  
 TVCN 05/0600Z TABS 05/0600Z NVGM 04/1800Z APxx 05/0000Z EExx 05/0000Z  
 NHC Not Avail UKM 05/0000Z COTC 04/1800Z CMC 05/0000Z GEMN 05/0000Z

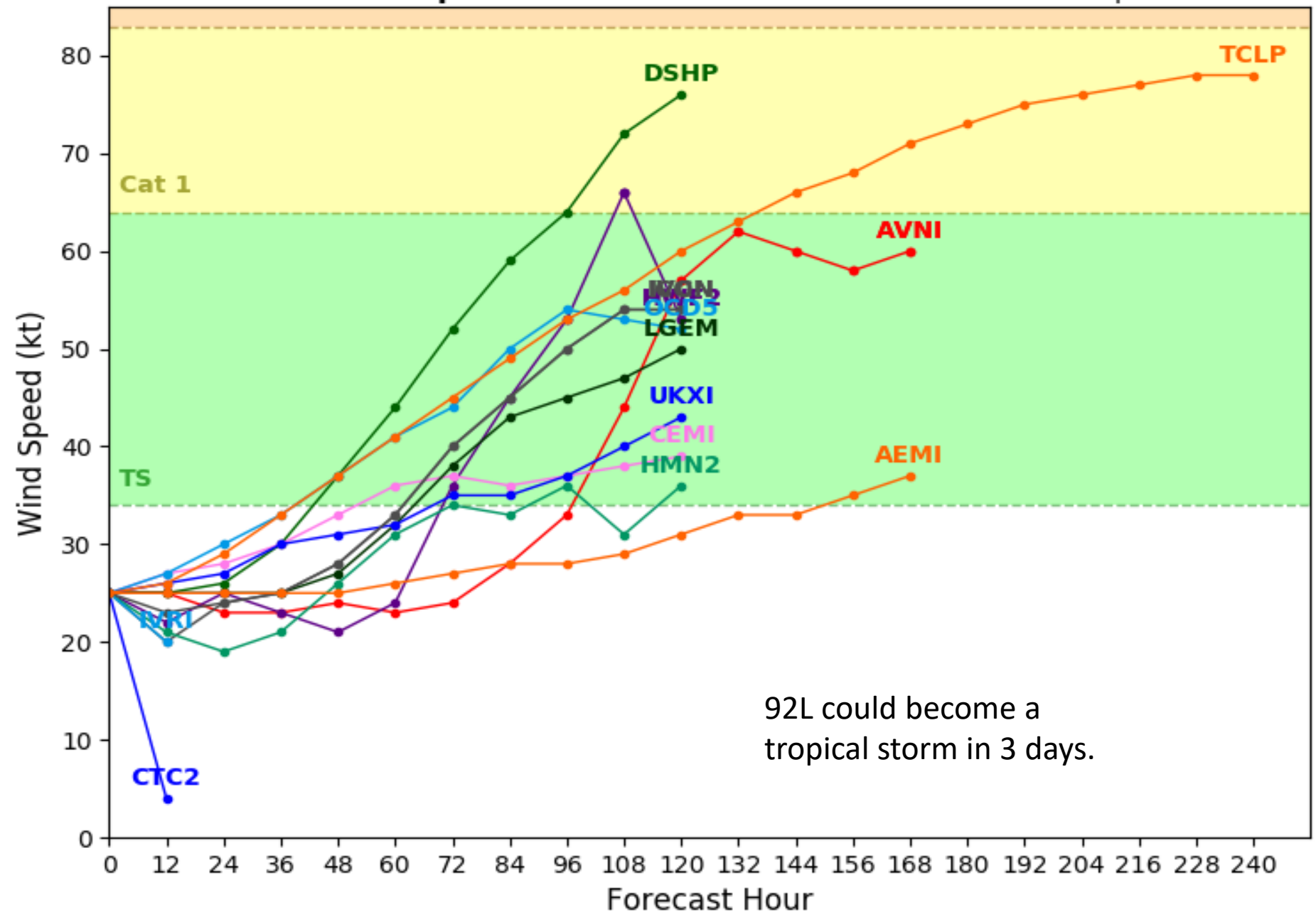


92L is forecast to move westward for the next 5-7 days. Any track forecasts beyond this point may be unreliable and subject to changes.

# Invest 92L Model Intensity Guidance

Initialized at 06z Sep 05 2018

Levi Cowan - tropicaltidbits.com

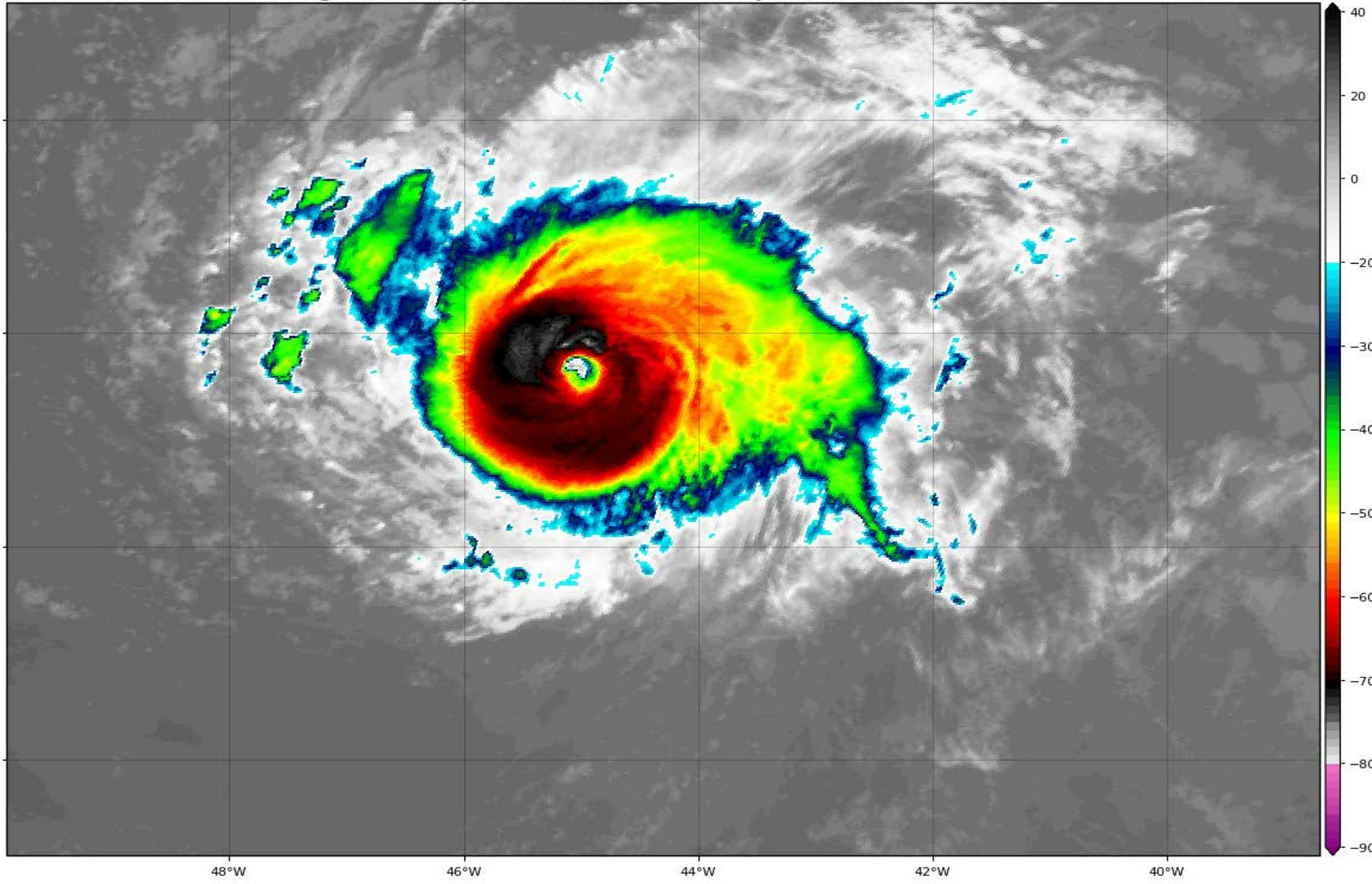


92L could become a tropical storm in 3 days.

# Hurricane Florence Satellite Image

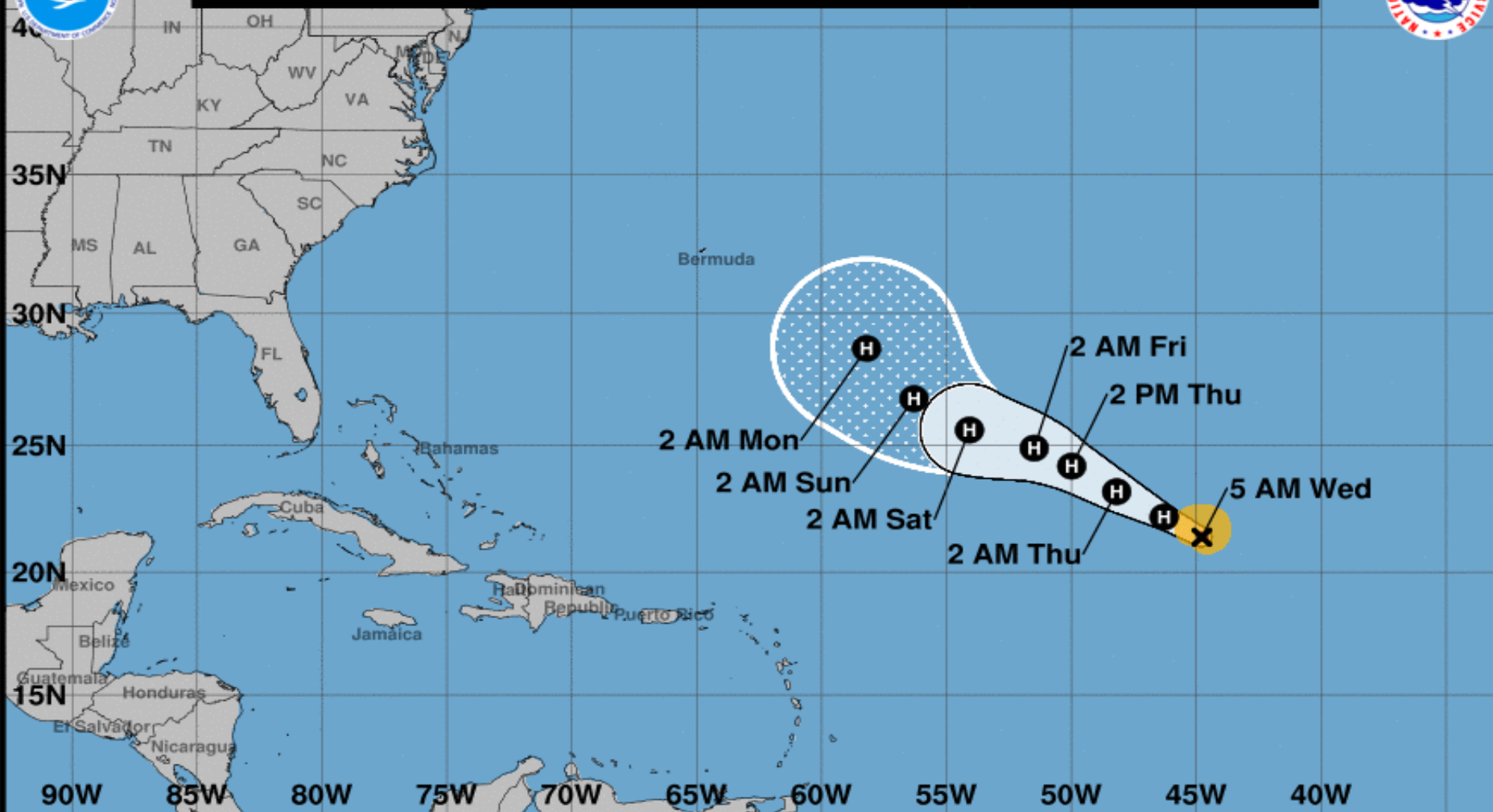
GOES-16 Channel 13 (IR) Brightness Temperature (°C) at 11:35Z Sep 05, 2018

TROPICALTIDBITS.COM





**Note: The cone contains the probable path of the storm center but does not show the size of the storm. Hazardous conditions can occur outside of the cone.**



## Hurricane Florence

Wednesday September 05, 2018

5 AM AST Advisory 24

NWS National Hurricane Center

## Current information: x

Center location 21.4 N 44.8 W

Maximum sustained wind 105 mph

Movement NW at 13 mph

## Forecast positions:

● Tropical Cyclone ○ Post/Potential TC

Sustained winds: D < 39 mph

S 39-73 mph H 74-110 mph M > 110 mph

## Potential track area:

Day 1-3 Day 4-5

## Watches:

Hurricane Trop Stm

## Warnings:

Hurricane Trop Stm

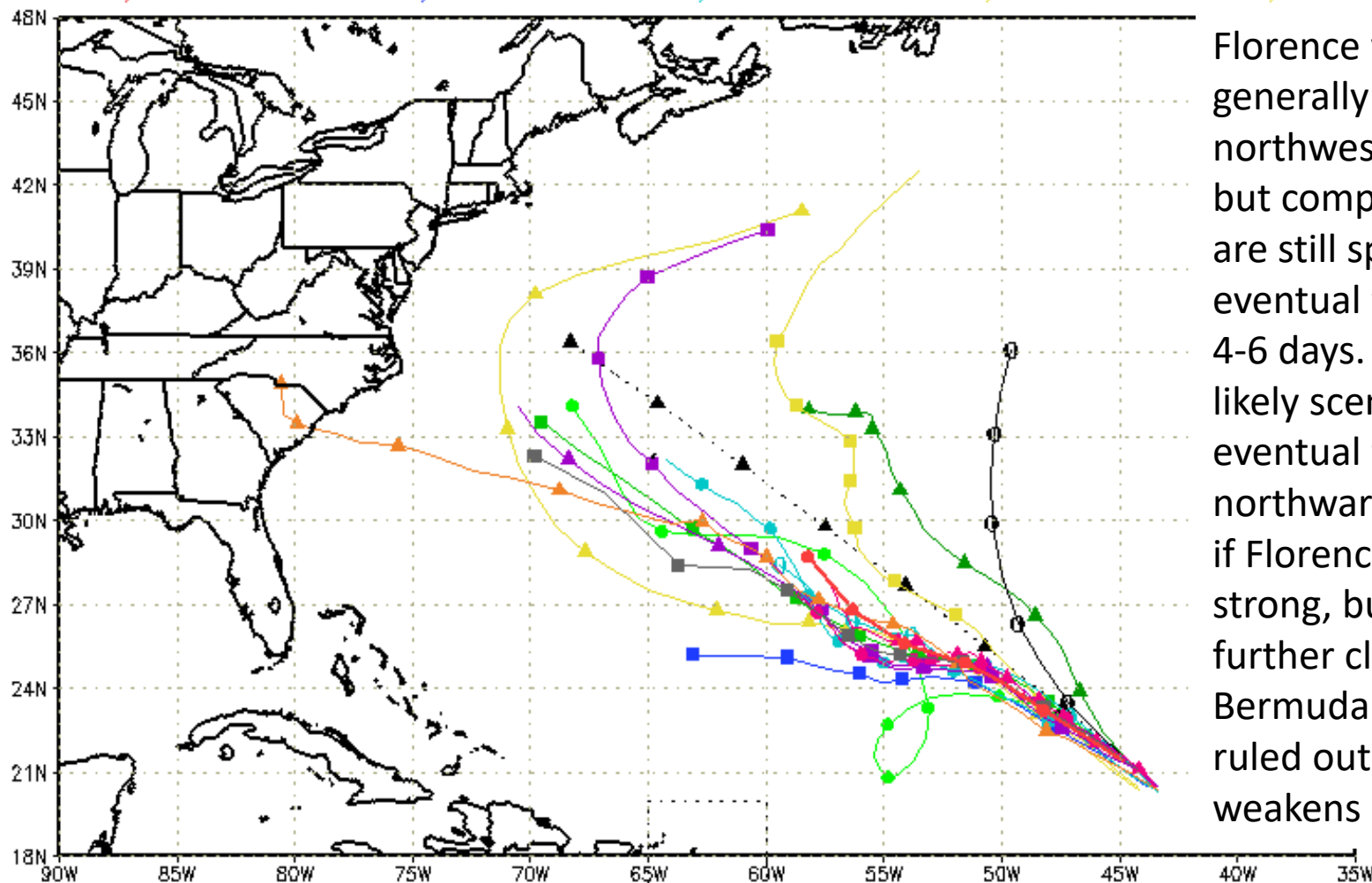
## Current wind extent:

Hurricane Trop Stm



# Track Models (Florence)

--▲-- XTRP 05/0600Z    ▲ TABD 05/0600Z    ▲ HMON 05/0000Z    ▲ AVNO 05/0000Z    ▲ ECMF 05/0000Z  
 --●-- CLP5 05/0600Z    ■ TABM 05/0600Z    ● HWRF 05/0000Z    ■ AEMN 05/0000Z    ■ EEMN 05/0000Z  
 --■-- TVCN 05/0600Z    ● TABS 05/0600Z    ● NVGM 05/0000Z    ● APxx 05/0000Z    ● EExx 05/0000Z  
 --●-- NHC 05/0900Z    ■ UKM 05/0000Z    ● COTC 05/0000Z    ▲ CMC 05/0000Z    ■ GEMN 05/0000Z

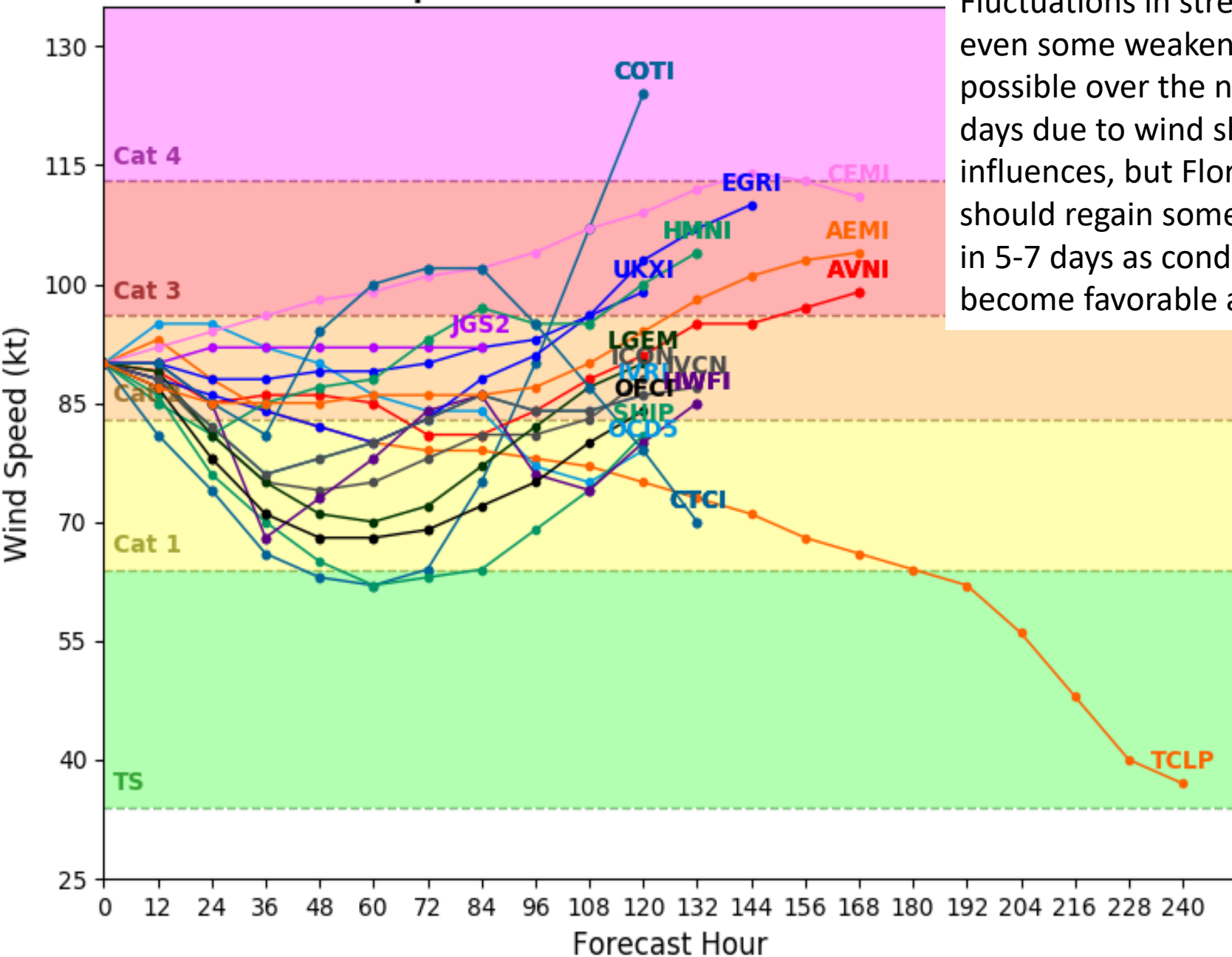


Florence will move generally west-northwest this week, but computer models are still split on the eventual track beyond 4-6 days. The more likely scenario is an eventual turn northward, especially if Florence stays strong, but a track further closer to Bermuda cannot be ruled out if the storm weakens some.



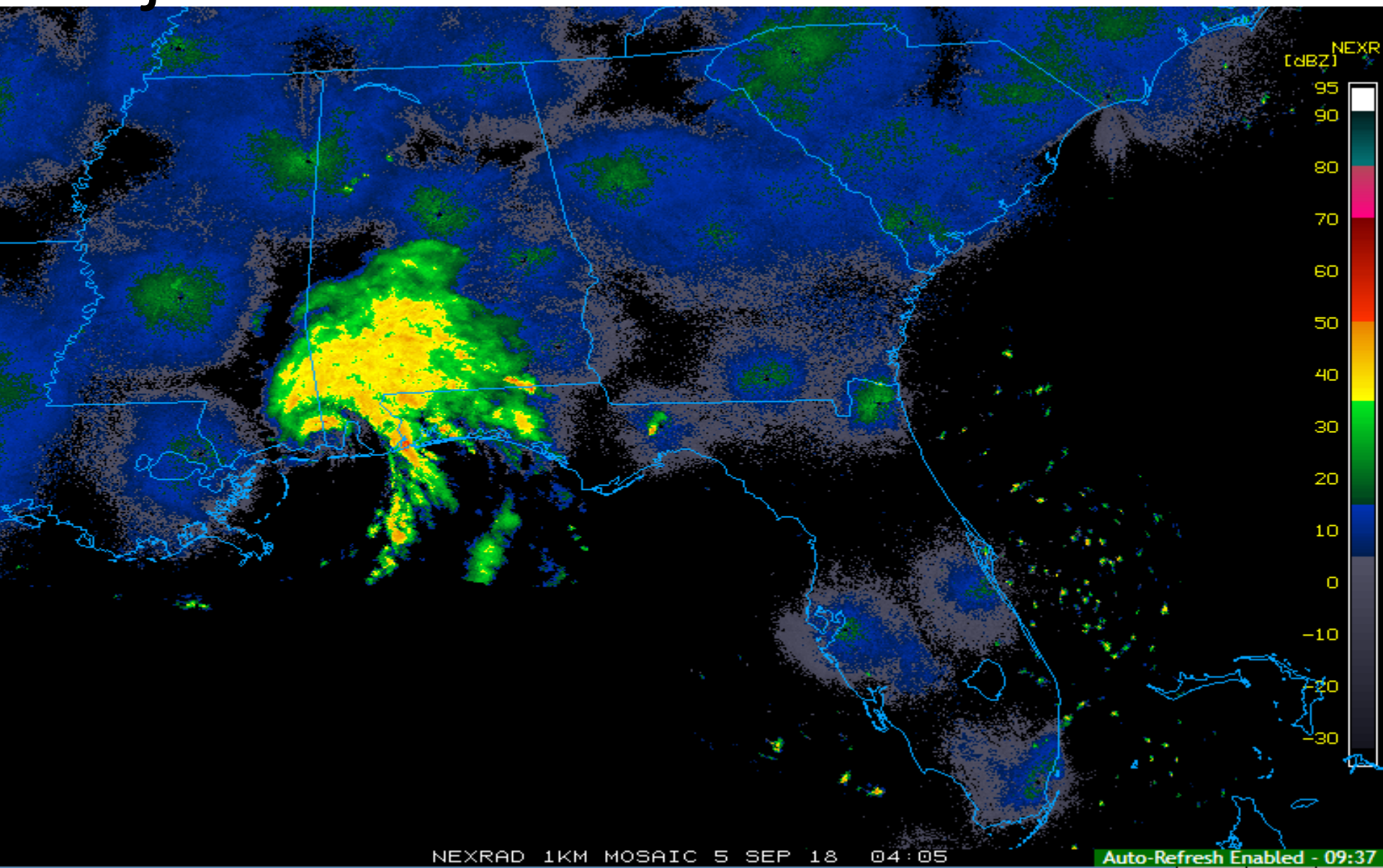
# Hurricane FLORENCE Model Intensity Guidance

Initialized at 06z Sep 05 2018

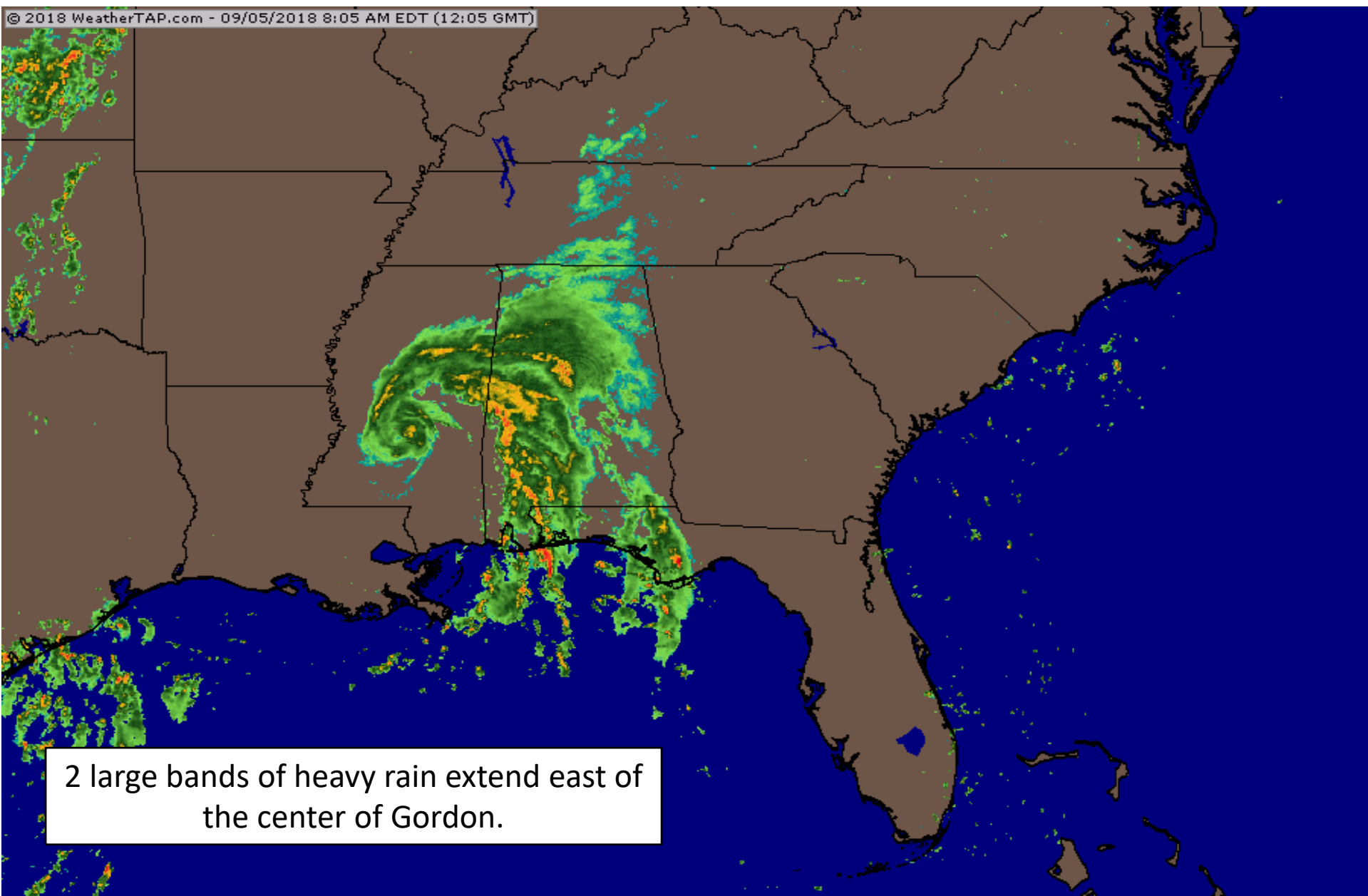


Fluctuations in strength and even some weakening are possible over the next 3-4 days due to wind shear influences, but Florence should regain some strength in 5-7 days as conditions become favorable again.

# Radar Image at 11:05pm CDT Tuesday just after Gordon makes landfall



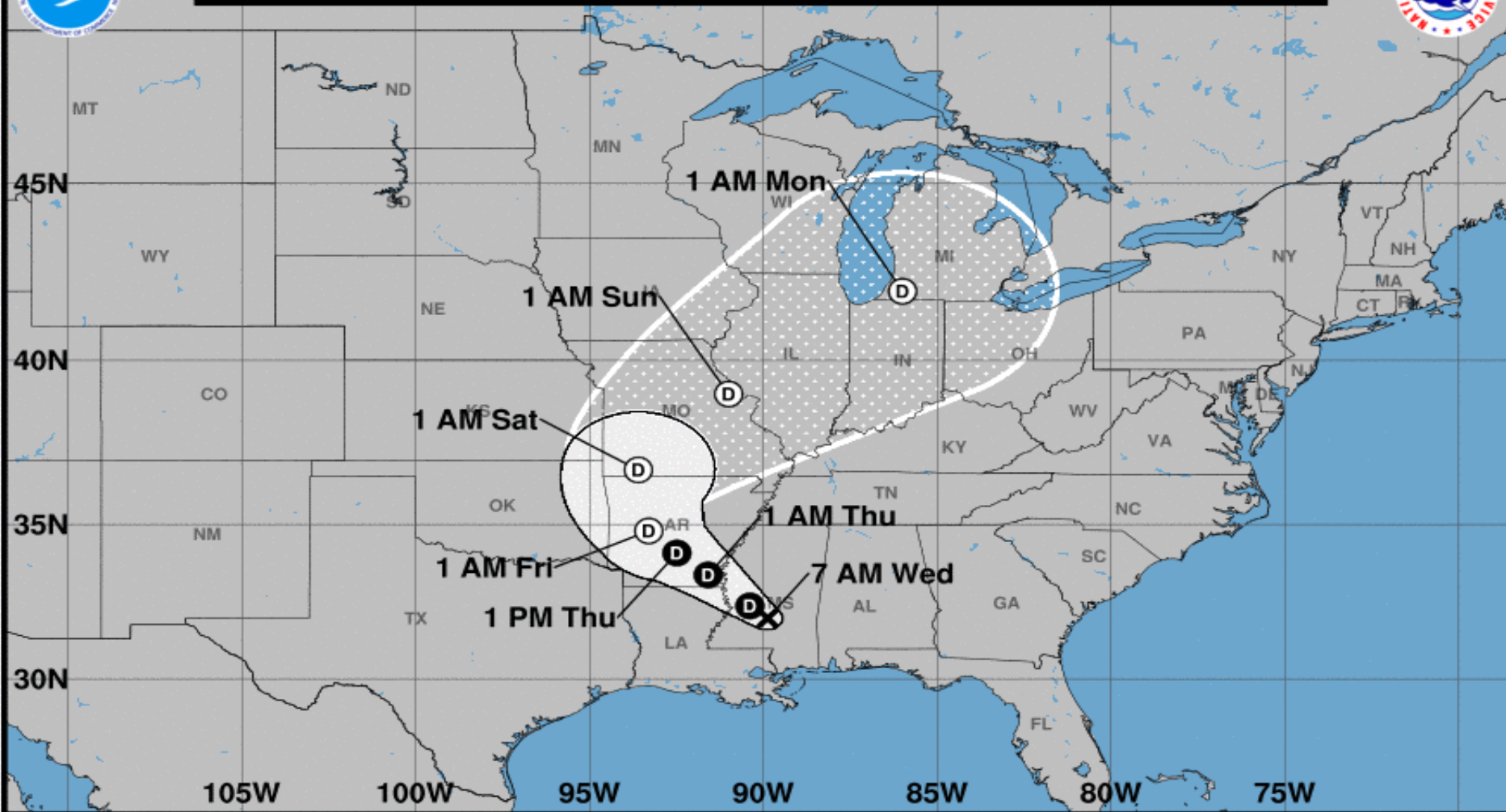
# Tropical Depression Gordon Current Radar Image







**Note: The cone contains the probable path of the storm center but does not show the size of the storm. Hazardous conditions can occur outside of the cone.**



**Tropical Depression Gordon**  
Wednesday September 05, 2018  
7 AM CDT Intermediate Advisory 12A  
NWS National Hurricane Center

**Current information: X**  
Center location 32.0 N 89.9 W  
Maximum sustained wind 35 mph  
Movement NW at 14 mph

**Forecast positions:**  
● Tropical Cyclone ○ Post/Potential TC  
Sustained winds: D < 39 mph  
S 39-73 mph H 74-110 mph M > 110 mph

**Potential track area:**

Day 1-3 Day 4-5

**Watches:**

Hurricane Trop Stm

**Warnings:**

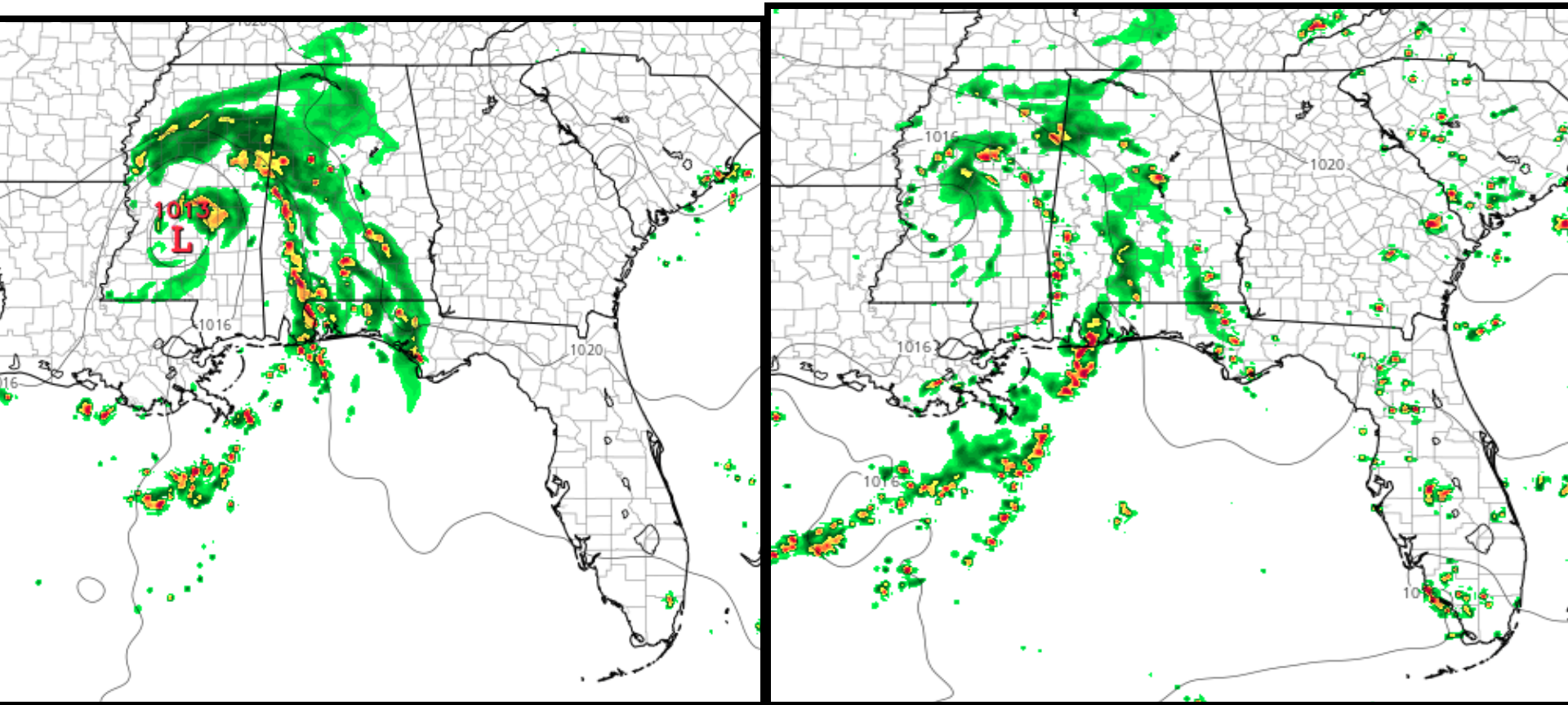
Hurricane Trop Stm

**Current wind extent:**

Hurricane Trop Stm

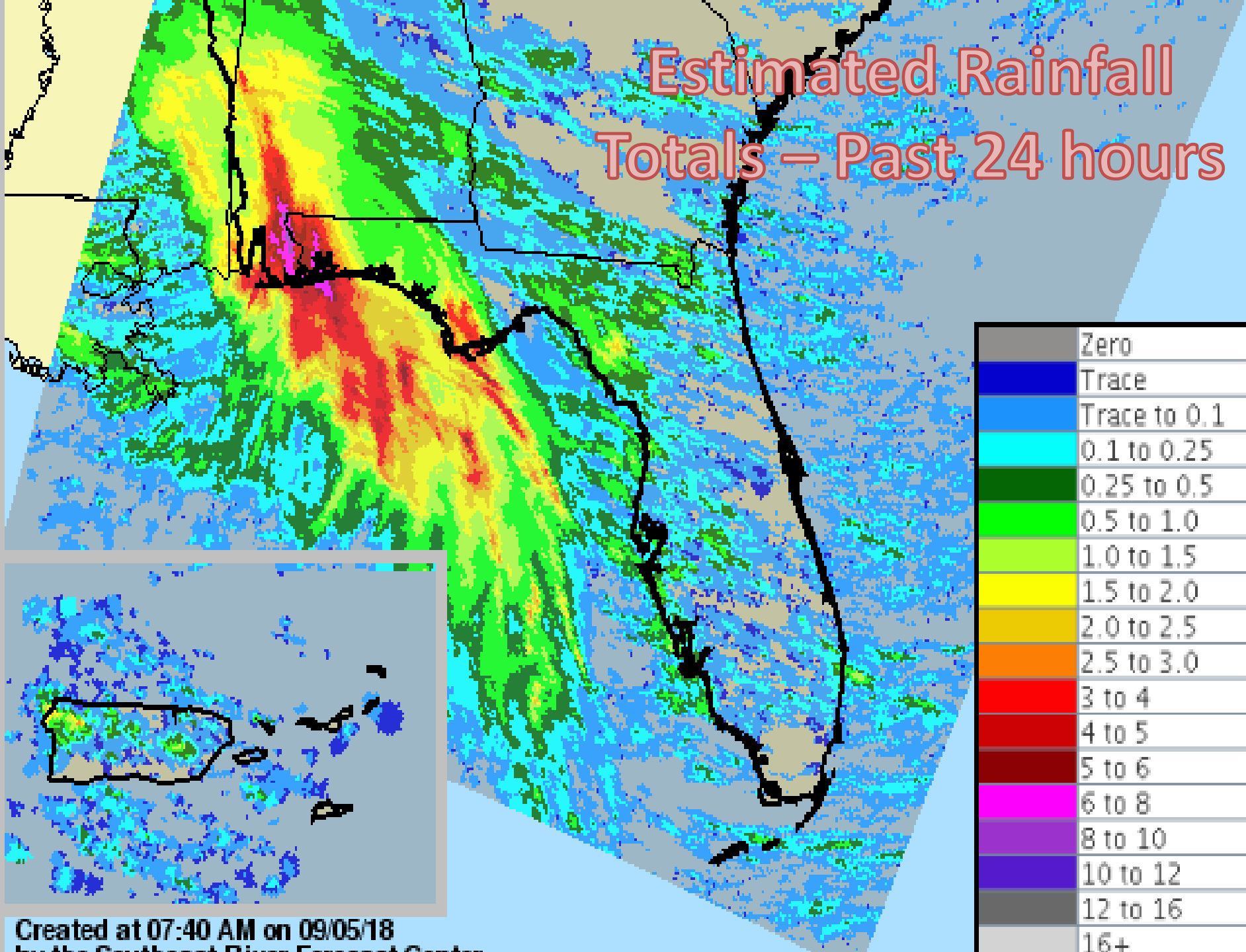
# Forecast Radar Image

## 10am CDT & 2pm CDT

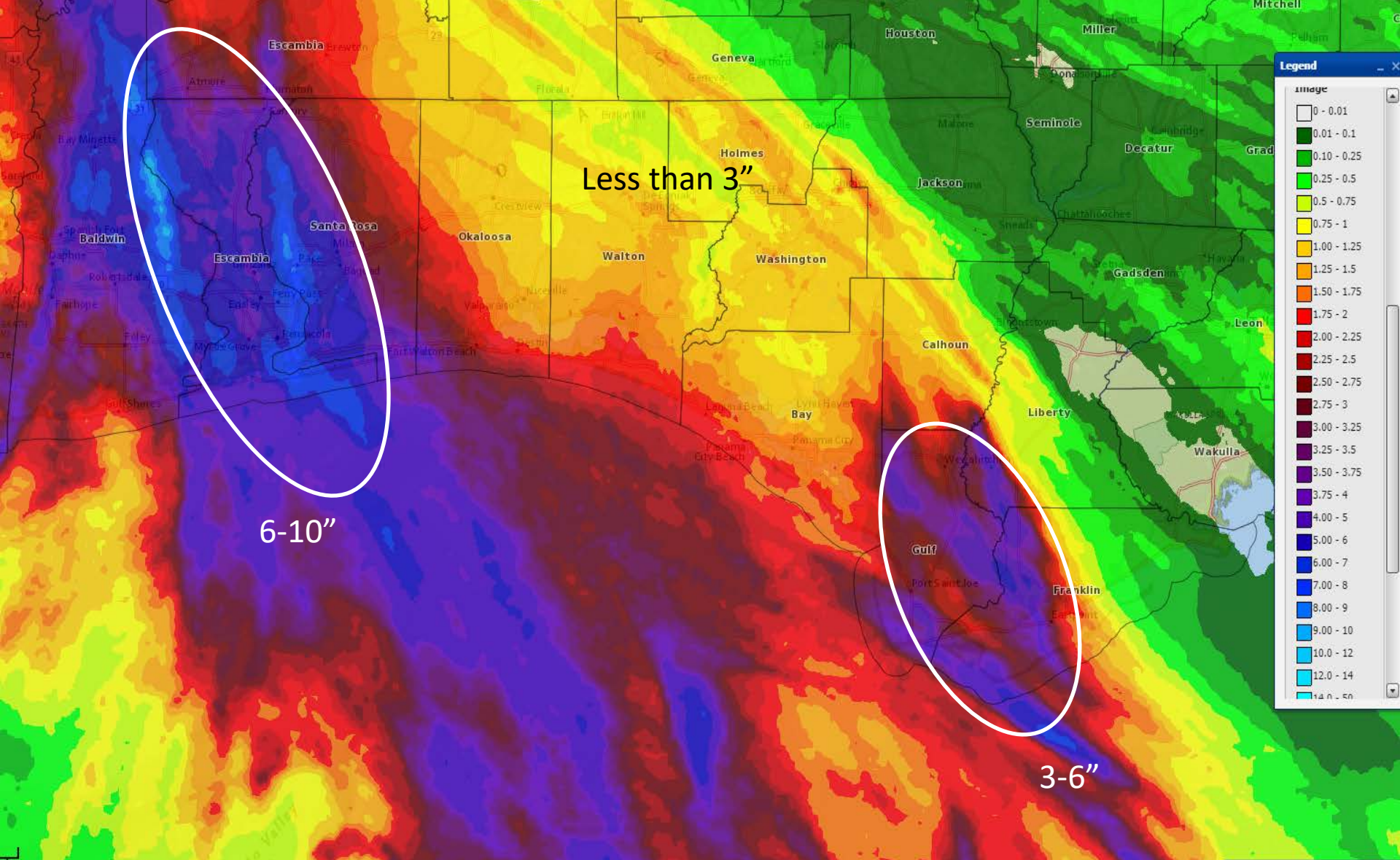


Bands of moderate to heavy rain may continue through Wednesday morning before conditions improve this afternoon.

# Estimated Rainfall Totals – Past 24 hours



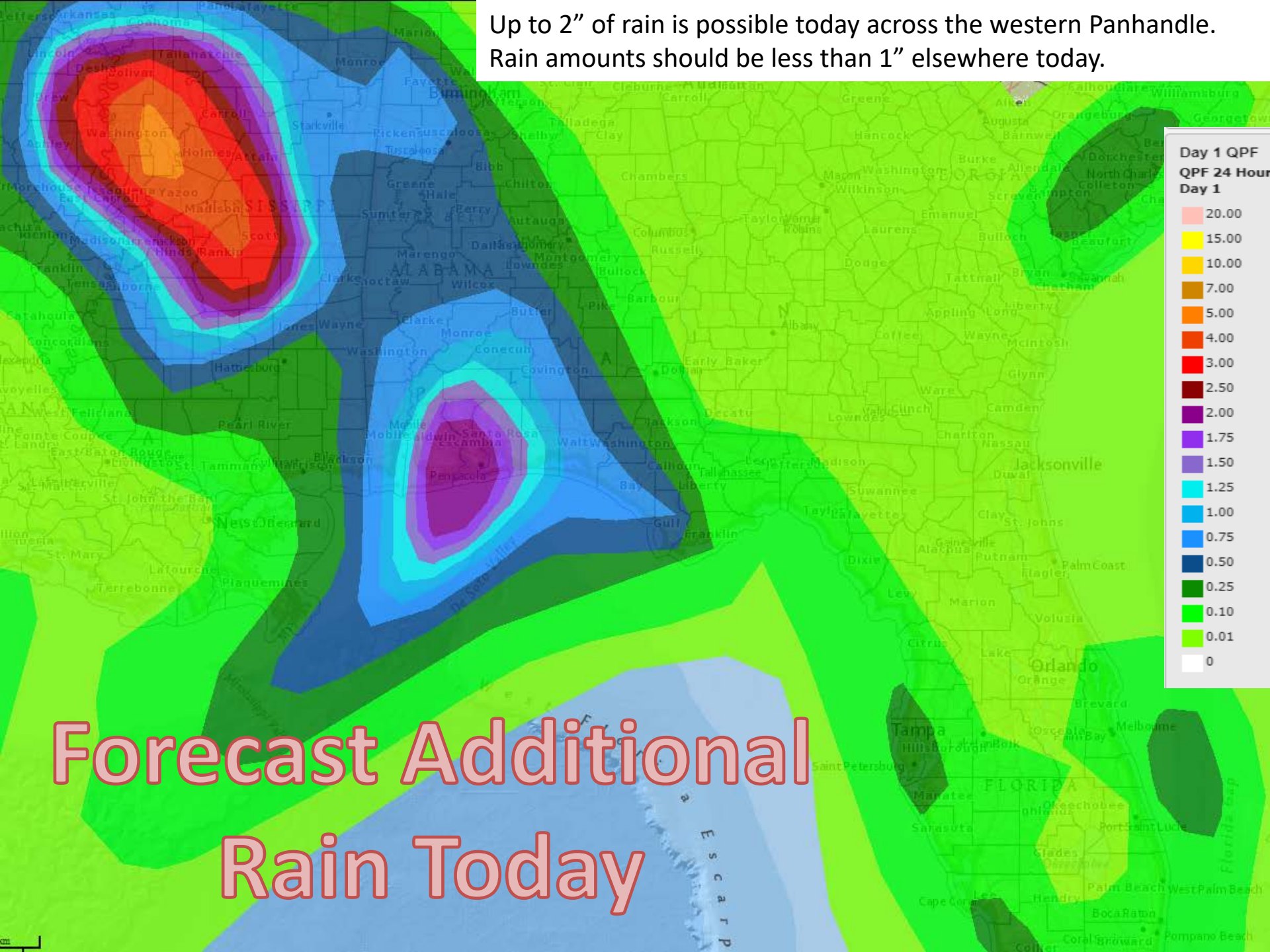


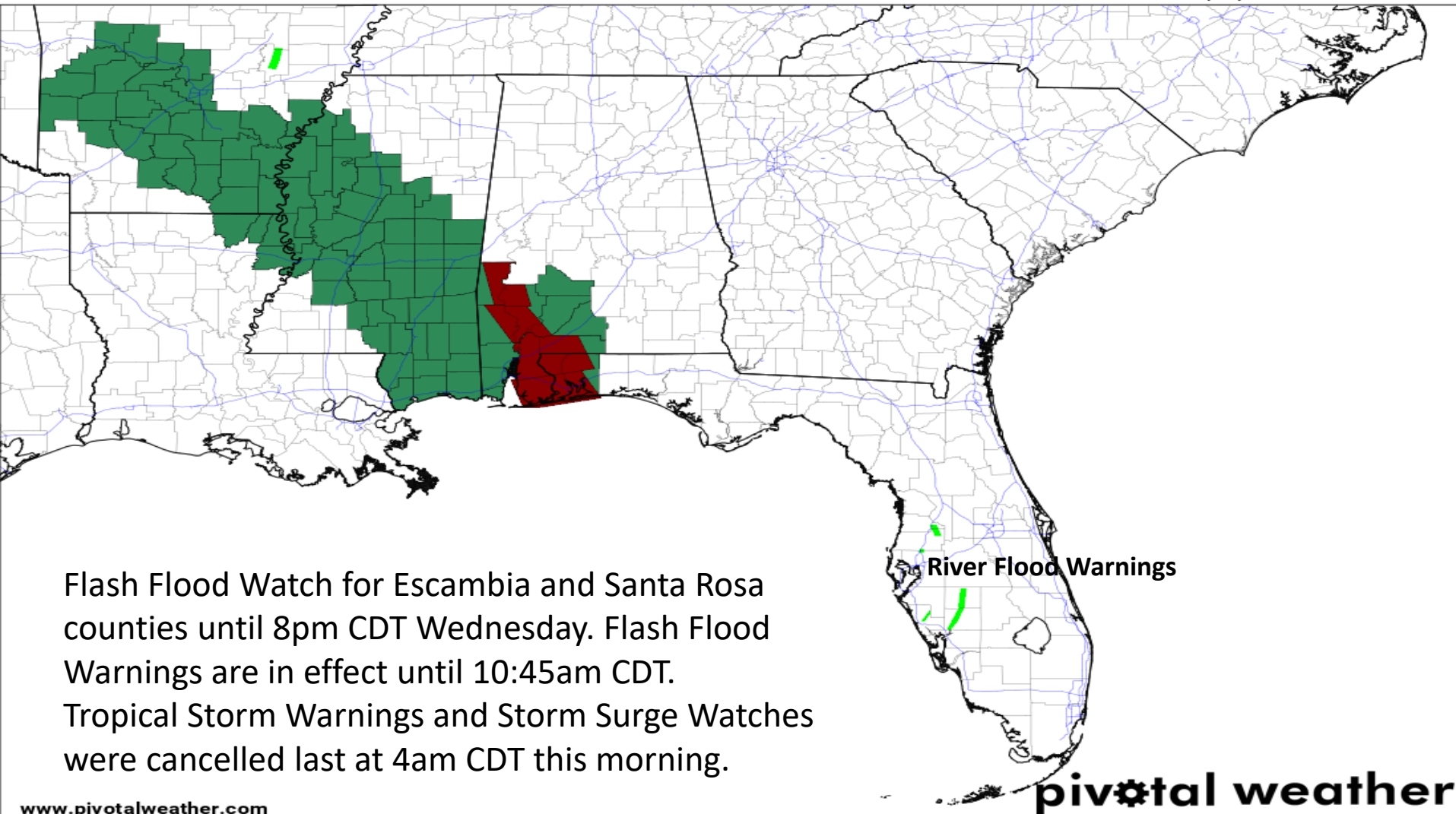


Estimated Rainfall  
Totals – Past 24 hours



Up to 2" of rain is possible today across the western Panhandle.  
Rain amounts should be less than 1" elsewhere today.





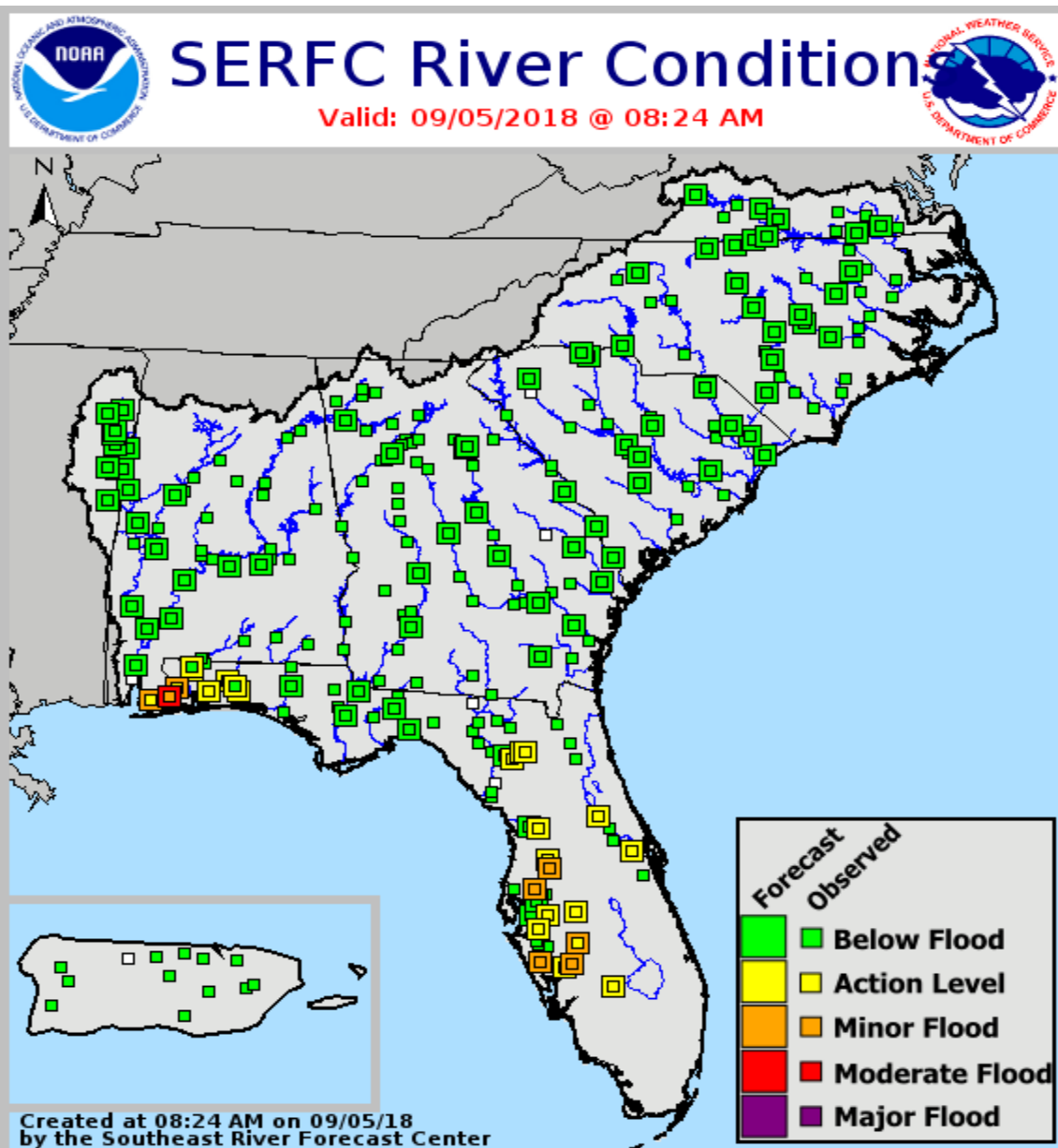
[www.pivotalweather.com](http://www.pivotalweather.com)

**pivotal weather**

Convective/Tropical	Flooding	Winter	Non-Precipitation
<ul style="list-style-type: none"> <li>Tornado Warning</li> <li>Tornado Watch</li> <li>Severe Thunderstorm Warning</li> <li>Severe Thunderstorm Watch</li> <li>Hurricane Warning</li> <li>Hurricane Watch</li> <li>Tropical Storm Warning</li> <li>Tropical Storm Watch</li> </ul>	<ul style="list-style-type: none"> <li>Flash Flood Warning</li> <li>Flash Flood Watch</li> <li>Flood Watch</li> <li>Flood Warning</li> <li>Coastal Flood Warning</li> <li>Coastal Flood Watch</li> </ul>	<ul style="list-style-type: none"> <li>Blizzard Warning</li> <li>Blizzard Watch</li> <li>Ice Storm Warning</li> <li>Winter Storm Warning</li> <li>Winter Storm Watch</li> <li>Winter Weather Advisory</li> <li>Freeze Warning</li> <li>Freeze Watch</li> </ul>	<ul style="list-style-type: none"> <li>Red Flag Warning</li> <li>Excessive Heat Warning</li> <li>Excessive Heat Watch</li> <li>Heat Advisory</li> <li>Dense Fog Advisory</li> <li>High Wind Warning</li> <li>High Wind Watch</li> <li>Wind Advisory</li> </ul>



# Current and Forecast River Conditions

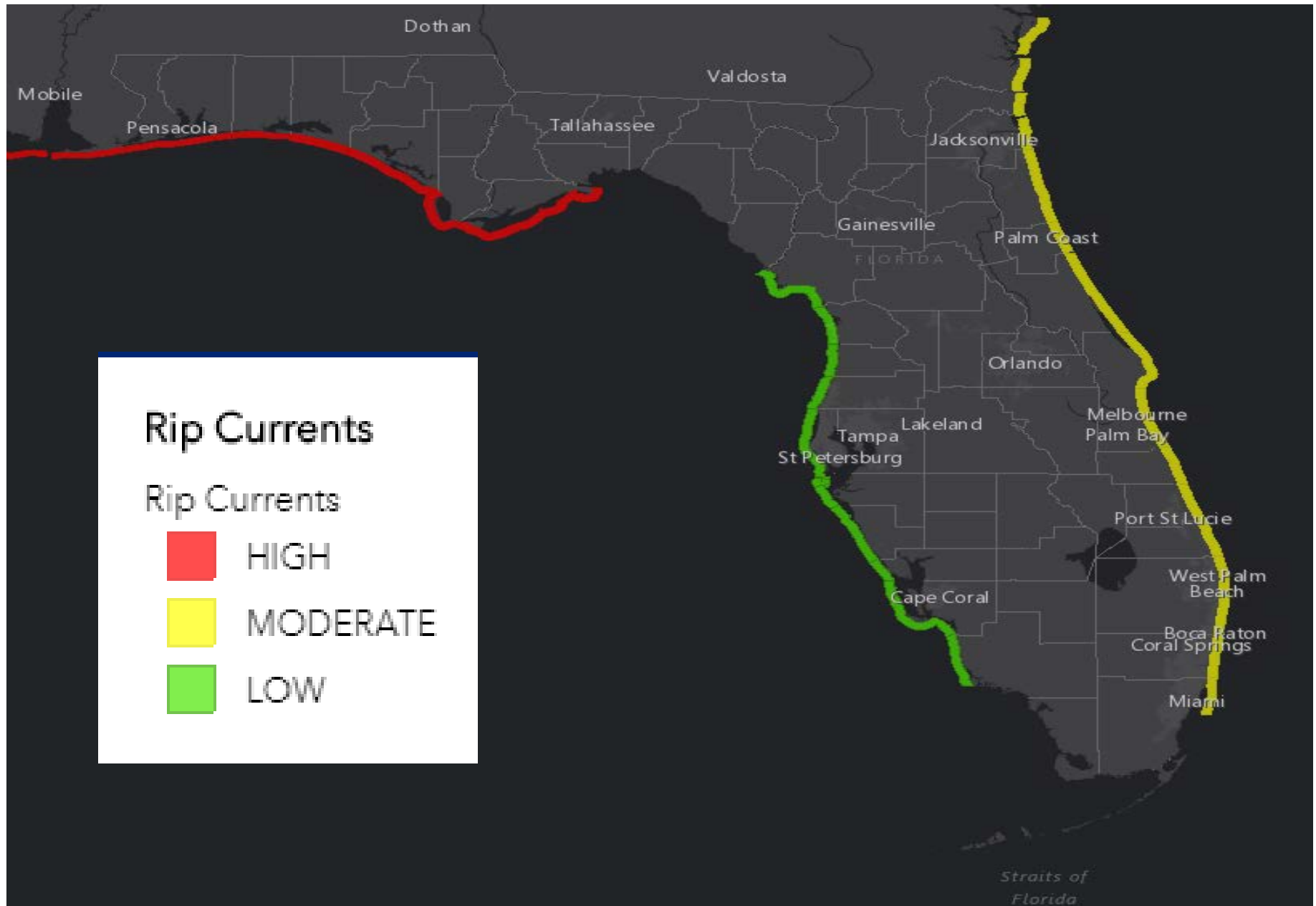


Several rivers in Central and Southwest Florida remain in minor flood stage, but significant flooding is not expected and most rivers are receding.

Rises are expected on many western Panhandle rivers, but significant flooding is not currently anticipated. Moderate flooding is forecast for the Styx River in Alabama, which flows into the southern Perdido River, but only minor flooding should occur in Florida and the entirety of the Perdido River system.

For more specifics on individual river levels, please visit the Southeast River Forecast Center at <https://www.weather.gov/serfc/>

# Rip Current Forecast Today



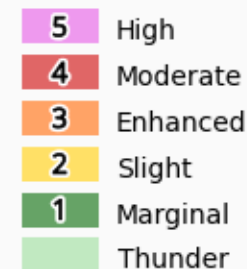
## Severe Weather Outlook Wednesday, September 05, 2018

An isolated tornado or waterspout cannot be ruled out this morning within the lingering outer bands of Gordon, but the overall threat is low.



National Weather Service  
Storm Prediction Center

<http://www.spc.noaa.gov>





# Summary

- As of 8:35 AM EDT, Florence has strengthened to a Category 3 hurricane over the open central Atlantic Ocean, becoming the 1st major hurricane of the 2018 Atlantic Hurricane Season.
- Maximum sustained winds have increased to near 120 mph. Some fluctuations in intensity are expected over the next couple days, but Florence will remain a hurricane through the next 5 days.
- Florence will generally move northwestward over through the next 5 days with no impact to land. However, Florence may produce large ocean swells and an increased rip current risk for the U.S. East Coast next week.
- Tropical Storm Gordon made landfall as a strong tropical storm near the MS/AL border around 10:15 PM CDT Tuesday with maximum winds near 70mph.
- As of 8 AM EDT Wednesday, Gordon has weakened to a tropical depression over central Mississippi.
- Maximum sustained winds are near 35 mph, and further weakening is expected as Gordon moves over the Mississippi River Valley.
- A tropical wave (Invest 92L) located a couple hundred miles south of the Cabo Verde Islands has become better organized since yesterday.
- Conditions are expected to be favorable for additional development, and a tropical depression is expected to form by the end of the week while the system moves west-northwestward over the eastern tropical Atlantic.
- The National Hurricane Center gives 92L a 50% (medium) chance of development over the next 48 hours, but a 90% (high) chance for development in 3-5 days.
- A tropical wave is expected to move off the west coast of Africa in a few days. Some development of this wave is possible over the weekend. The National Hurricane Center gives this system a 0% (low) chance of formation during the next 2 days, but a 30% (low) chance in 3-5 days.

## Florida Outlook:

- All Storm Surge Watches and Tropical Storm Warnings were discontinued at 4am CDT.
- Rain bands from Gordon will continue impacting the western Panhandle this morning, producing locally heavy rainfall.
- 3-6" of rain has fallen over parts of the western Big Bend and southeast Panhandle, as well as the western Panhandle during the past 24 hours. Localized totals of 6-10" have been reported in portions of Escambia and Santa Rosa Counties.
- An additional 1-2" of rain is expected across parts of Escambia and Santa Rosa Counties today with localized totals up to 4" possible.
- A Flash Flood Watch remains in effect for Escambia and Santa Rosa Counties until 7 PM CDT Wednesday.
- Flash Flood Warnings remain in effect for Escambia and Santa Rosa Counties this morning.
- Minor river flooding is possible for some Panhandle rivers, but significant impacts are not anticipated.
- An isolated tornado or waterspout is possible this morning, but the threat is rapidly diminishing as Gordon moves over the mid-South.
- Residual high waves over the Gulf will result in a high risk of rip currents for all Panhandle beaches through the next several days.
- Tide levels are running about 1-2' above normal, and a Coastal Flood Advisory remains in effect for Escambia and Santa Rosa Counties through this afternoon for possible minor inundation.

With impacts to Florida diminishing, briefing packets will be sent out once per day on active systems, with the next packet scheduled for late Thursday morning. For the latest information on the tropics, please visit the National Hurricane Center website at [www.hurricanes.gov](http://www.hurricanes.gov).



# TROPICAL UPDATE

Created by:

Amy Godsey, Chief State Meteorologist

[Amy.Godsey@em.myflorida.com](mailto:Amy.Godsey@em.myflorida.com)

Cameron Young, Assistant State Meteorologist

[Cameron.Young@em.myflorida.com](mailto:Cameron.Young@em.myflorida.com)

State Meteorological Support Unit

Florida Division of Emergency Management

Users wishing to subscribe (approval pending) to this distribution list, register at [https://public.govdelivery.com/accounts/FLDEM/subscriber/new?topic\\_id=SERT\\_Met\\_Tropics](https://public.govdelivery.com/accounts/FLDEM/subscriber/new?topic_id=SERT_Met_Tropics).

Other reports available for subscription are available at

<https://public.govdelivery.com/accounts/FLDEM/subscriber/new?preferences=true>