



# **TROPICAL UPDATE**

**5 PM EDT**

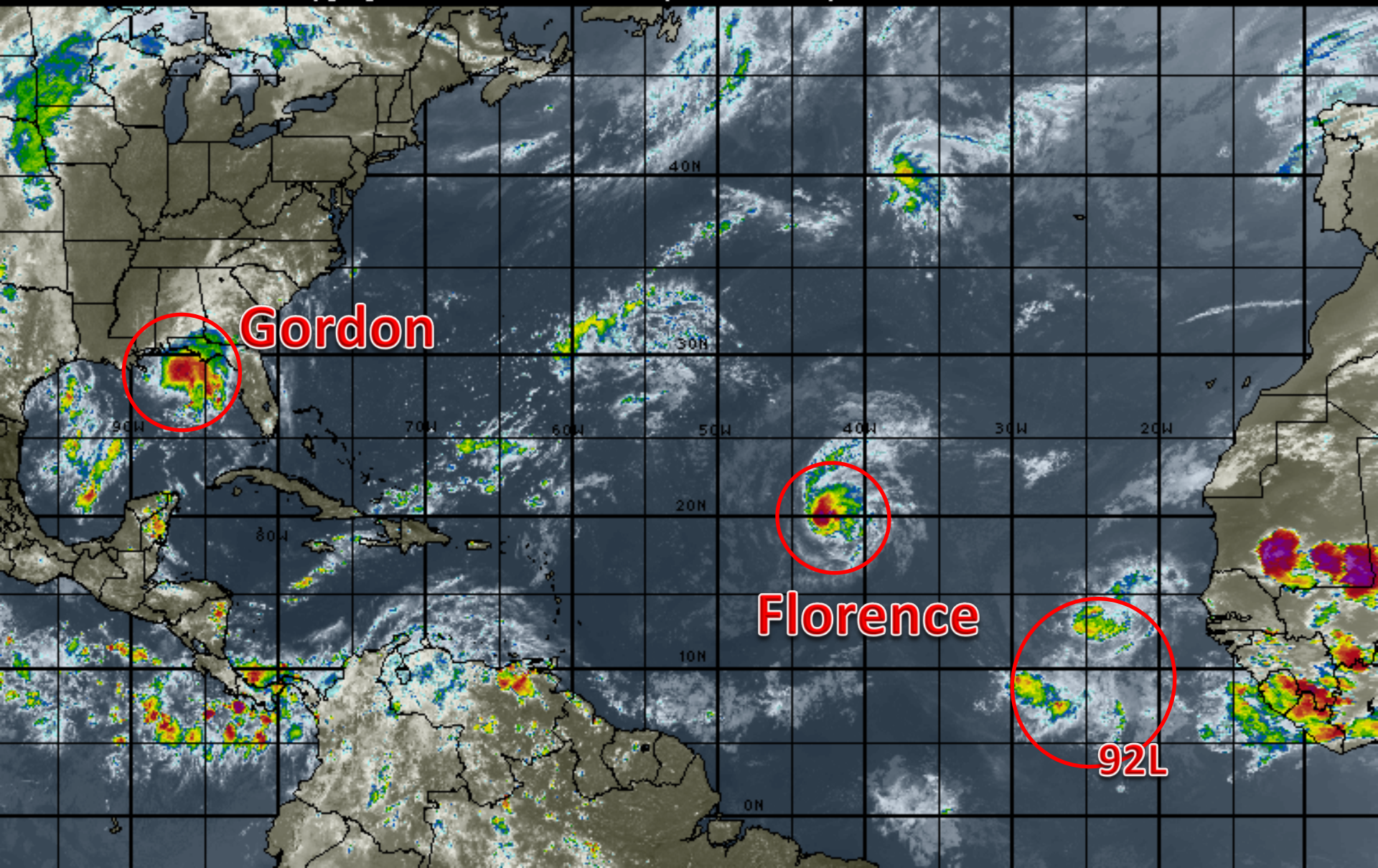
**Tuesday, September 4, 2018**

**Hurricane Florence, Tropical Storm Gordon &  
Invest 92L (80%)**

**This update is intended for government and emergency response officials, and is provided for informational and situational awareness purposes only. Forecast conditions are subject to change based on a variety of environmental factors. For additional information, or for any life safety concerns with an active weather event please contact your County Emergency Management or Public Safety Office, local National Weather Service forecast office or visit the National Hurricane Center website at [www.nhc.noaa.gov](http://www.nhc.noaa.gov).**

# Atlantic Basin Satellite Image

18:00 04-SEP-2018 GMT Copyright © 1998-2018 WSI Corporation <http://www.wsi.com>





# Five-Day Graphical Tropical Weather Outlook

National Hurricane Center Miami, Florida



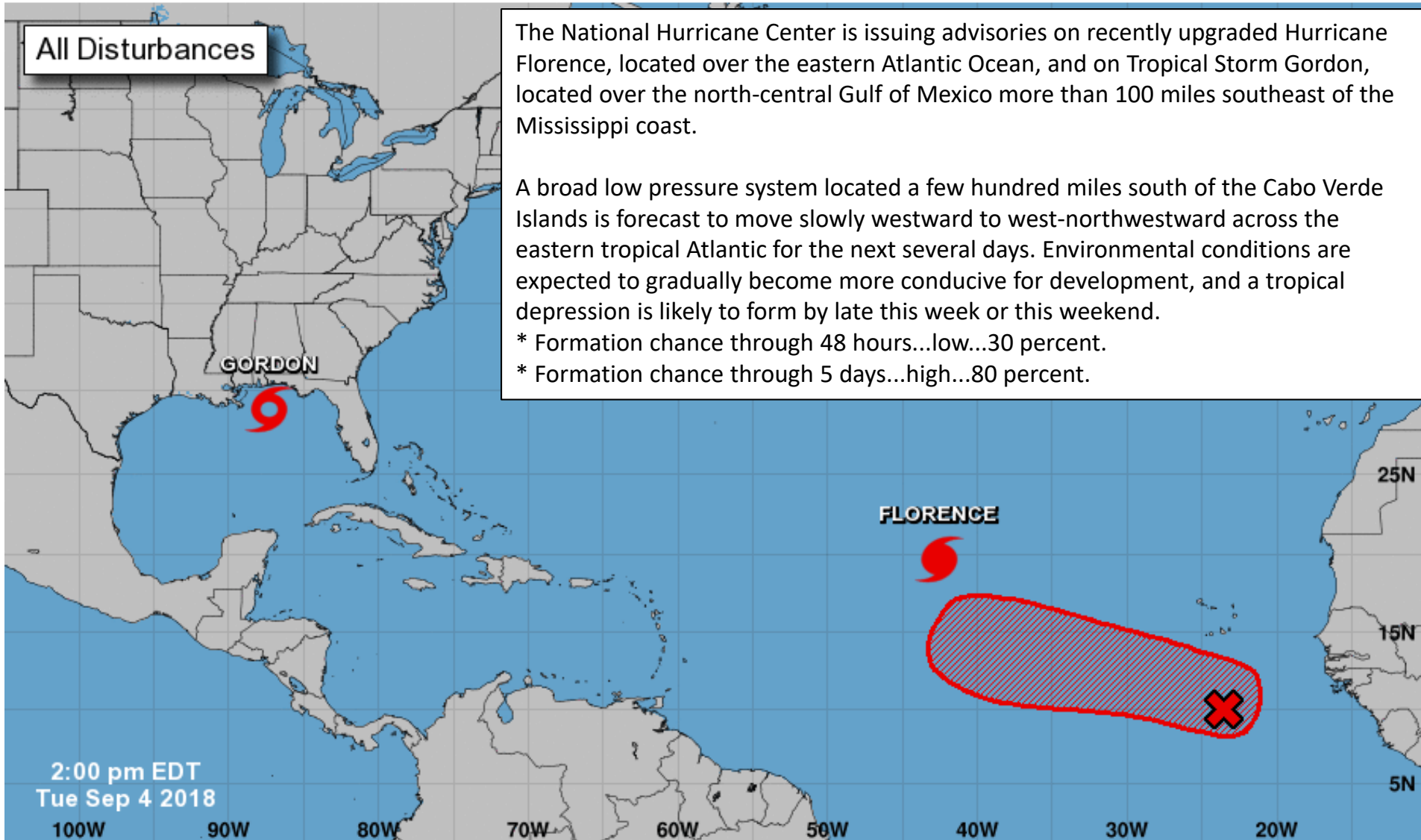
## All Disturbances

The National Hurricane Center is issuing advisories on recently upgraded Hurricane Florence, located over the eastern Atlantic Ocean, and on Tropical Storm Gordon, located over the north-central Gulf of Mexico more than 100 miles southeast of the Mississippi coast.

A broad low pressure system located a few hundred miles south of the Cabo Verde Islands is forecast to move slowly westward to west-northwestward across the eastern tropical Atlantic for the next several days. Environmental conditions are expected to gradually become more conducive for development, and a tropical depression is likely to form by late this week or this weekend.

\* Formation chance through 48 hours...low...30 percent.

\* Formation chance through 5 days...high...80 percent.



Current Disturbances and Five-Day Cyclone Formation Chance: < 40% 40-60% > 60%

Tropical or Sub-Tropical Cyclone: Depression Storm Hurricane

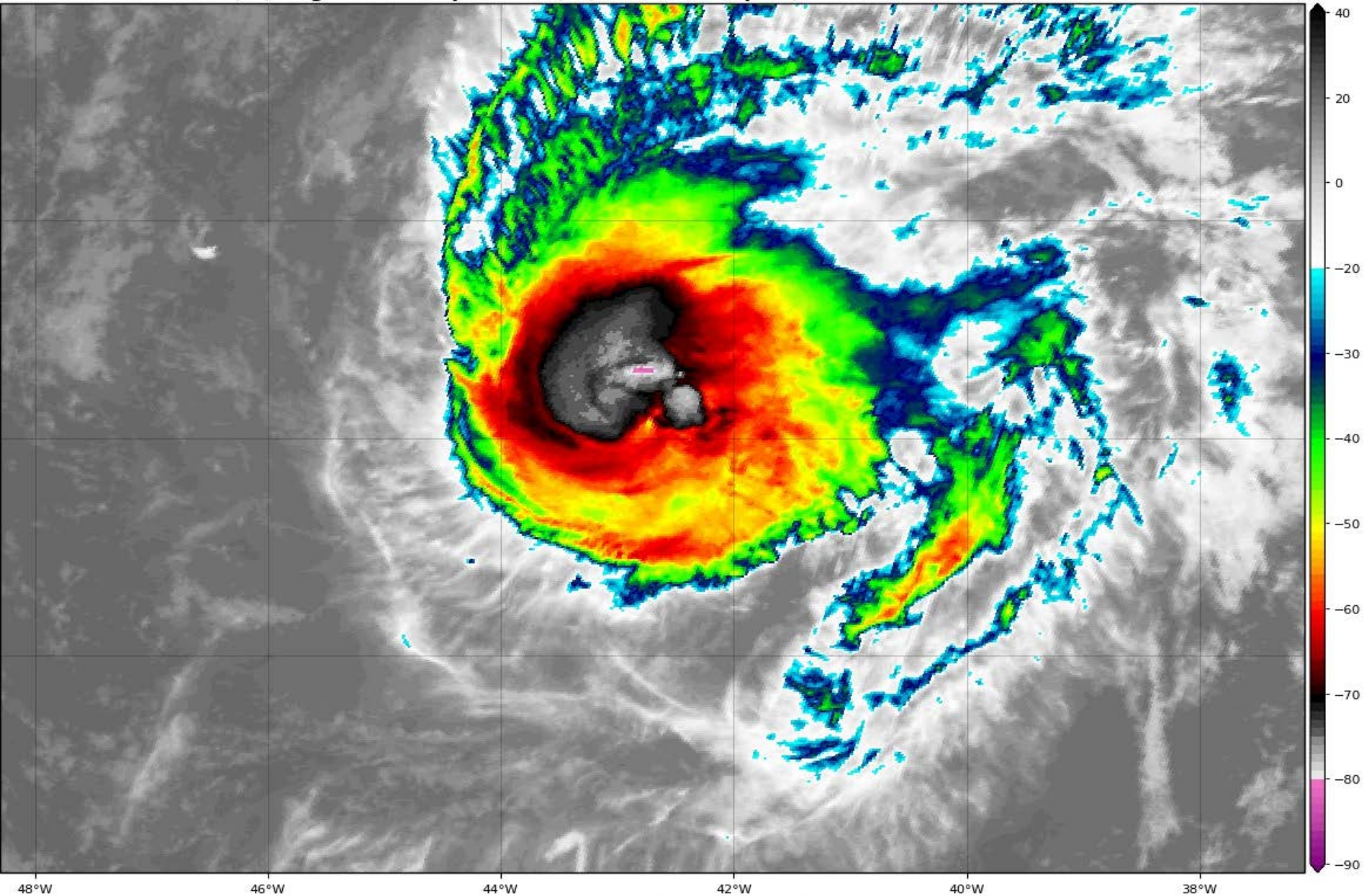
Post-Tropical Cyclone or Remnants



# Hurricane Florence Satellite Image

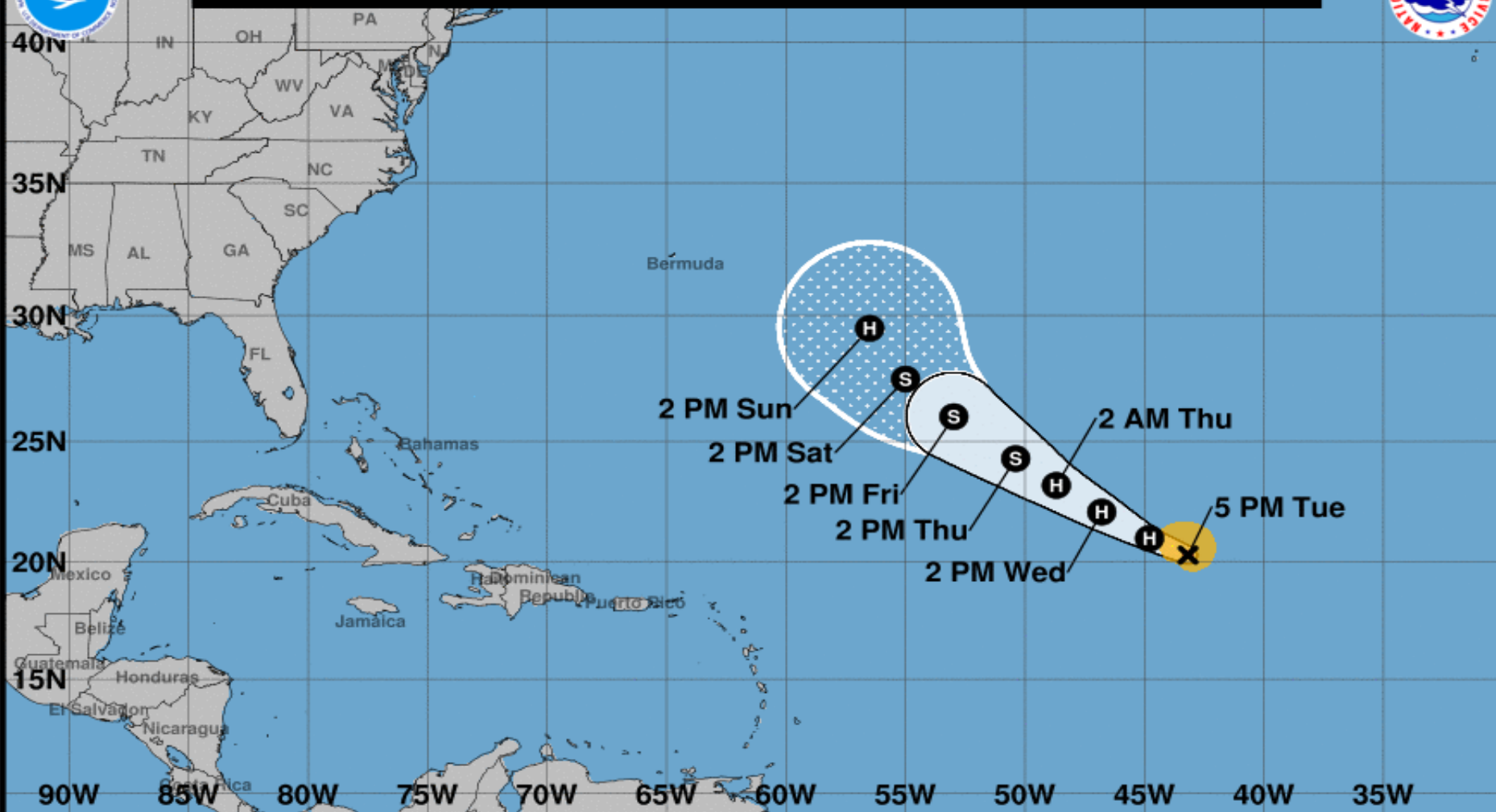
GOES-16 Channel 13 (IR) Brightness Temperature (°C) at 20:20Z Sep 04, 2018

TROPICALTIDBITS.COM





**Note: The cone contains the probable path of the storm center but does not show the size of the storm. Hazardous conditions can occur outside of the cone.**



## Hurricane Florence

Tuesday September 04, 2018

5 PM AST Advisory 22

NWS National Hurricane Center

## Current information: X

Center location 20.3 N 43.2 W

Maximum sustained wind 85 mph

Movement WNW at 12 mph

## Forecast positions:

● Tropical Cyclone ○ Post/Potential TC

Sustained winds: D < 39 mph

S 39-73 mph H 74-110 mph M > 110 mph

## Potential track area:

Day 1-3 Day 4-5

## Watches:

Hurricane Trop Stm

## Warnings:

Hurricane Trop Stm

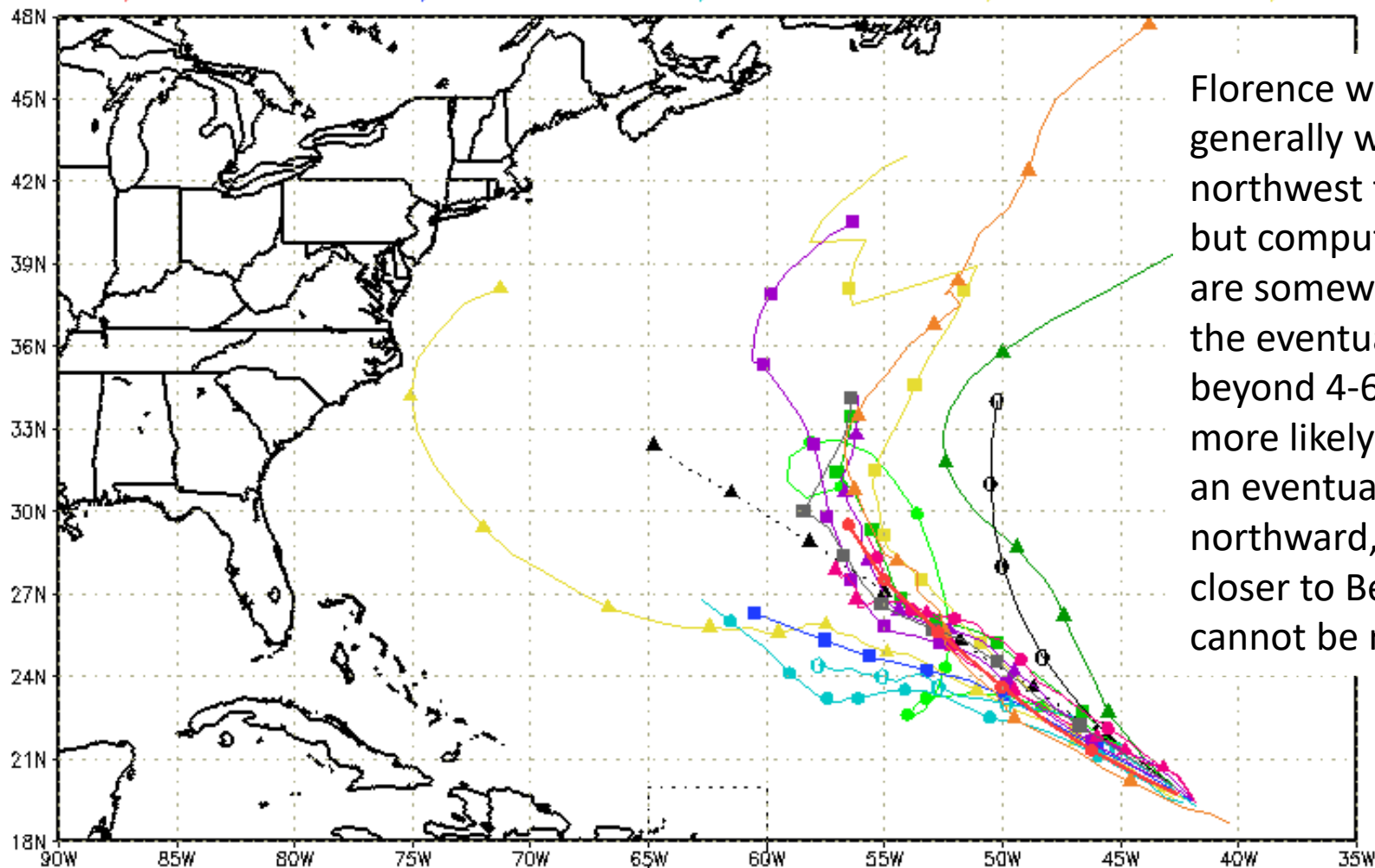
## Current wind extent:

Hurricane Trop Stm



# Track Models (Florence)

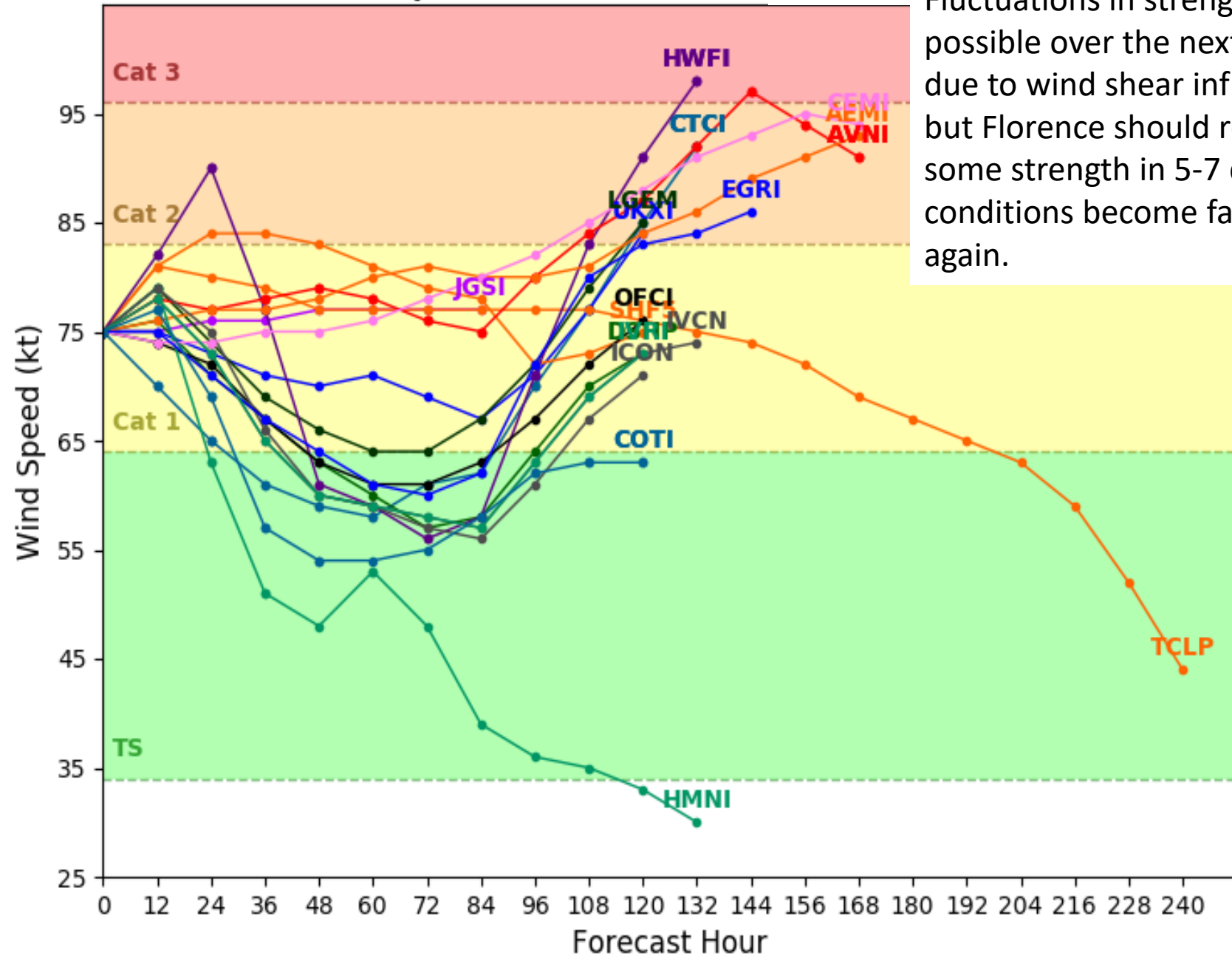
--▲-- XTRP 04/1800Z    ▲ TABD 04/1800Z    ▲ HMON 04/1200Z    ▲ AVNO 04/1200Z    ▲ ECMF 04/0000Z  
 ● CLP5 04/1800Z    ■ TABM 04/1800Z    ● HWRF 04/1200Z    ■ AEMN 04/1200Z    ■ EEMN 04/0000Z  
 ■ TVCN 04/1800Z    ● TABS 04/1800Z    ● NVGM 04/1200Z    ● APxx 04/1200Z    ● EExx 04/0000Z  
 ● NHC 04/1500Z    ■ UKM 04/1200Z    ● COTC 04/1200Z    ▲ CMC 04/1200Z    ■ CEMN 04/1200Z



Florence will move generally west-northwest this week, but computer models are somewhat split on the eventual track beyond 4-6 days. The more likely scenario is an eventual turn northward, but a track closer to Bermuda cannot be ruled out.

# Hurricane FLORENCE Model Intensity Guidance

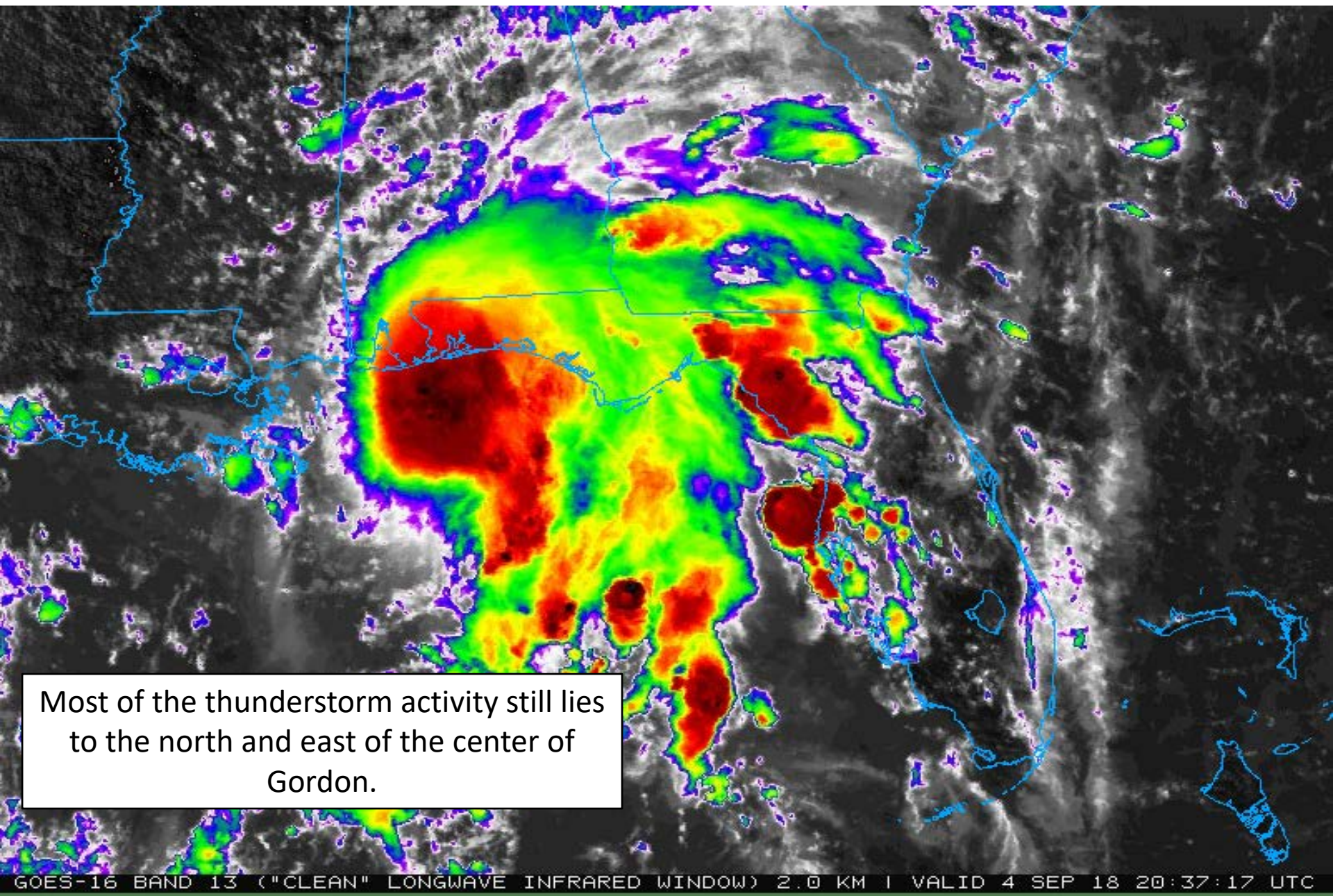
Initialized at 18z Sep 04 2018



Fluctuations in strength are possible over the next 4 days due to wind shear influences, but Florence should regain some strength in 5-7 days as conditions become favorable again.



# Tropical Storm Gordon Satellite Image

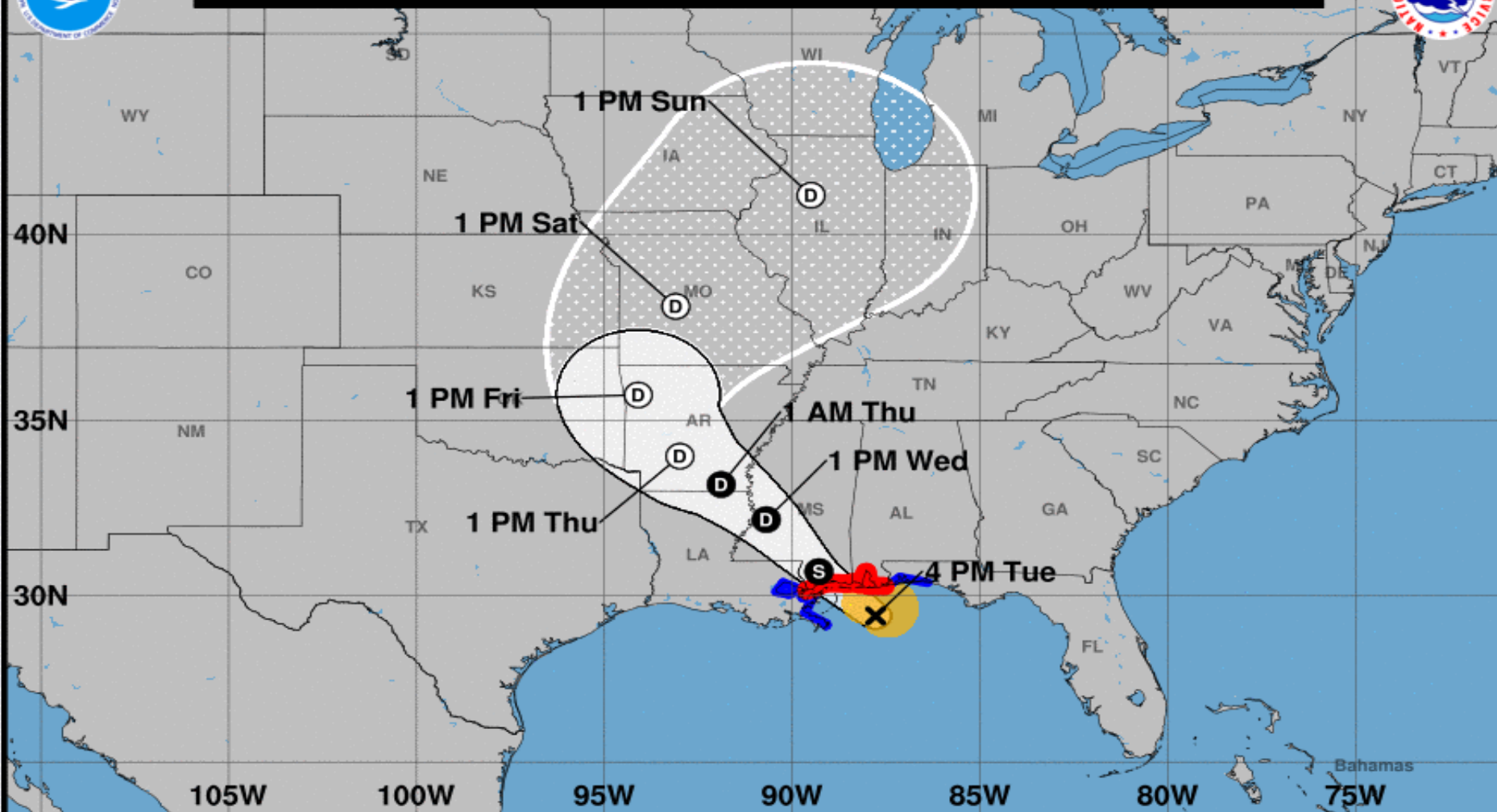


Most of the thunderstorm activity still lies to the north and east of the center of Gordon.





**Note: The cone contains the probable path of the storm center but does not show the size of the storm. Hazardous conditions can occur outside of the cone.**



### Tropical Storm Gordon

Tuesday September 04, 2018

4 PM CDT Advisory 10

NWS National Hurricane Center

### Current information: X

Center location 29.4 N 87.8 W

Maximum sustained wind 70 mph

Movement NW at 15 mph

### Forecast positions:

● Tropical Cyclone ○ Post/Potential TC

Sustained winds: D < 39 mph

S 39-73 mph H 74-110 mph M > 110 mph

### Potential track area:

Day 1-3 Day 4-5

### Watches:

Hurricane Trop Stm

### Warnings:

Hurricane Trop Stm

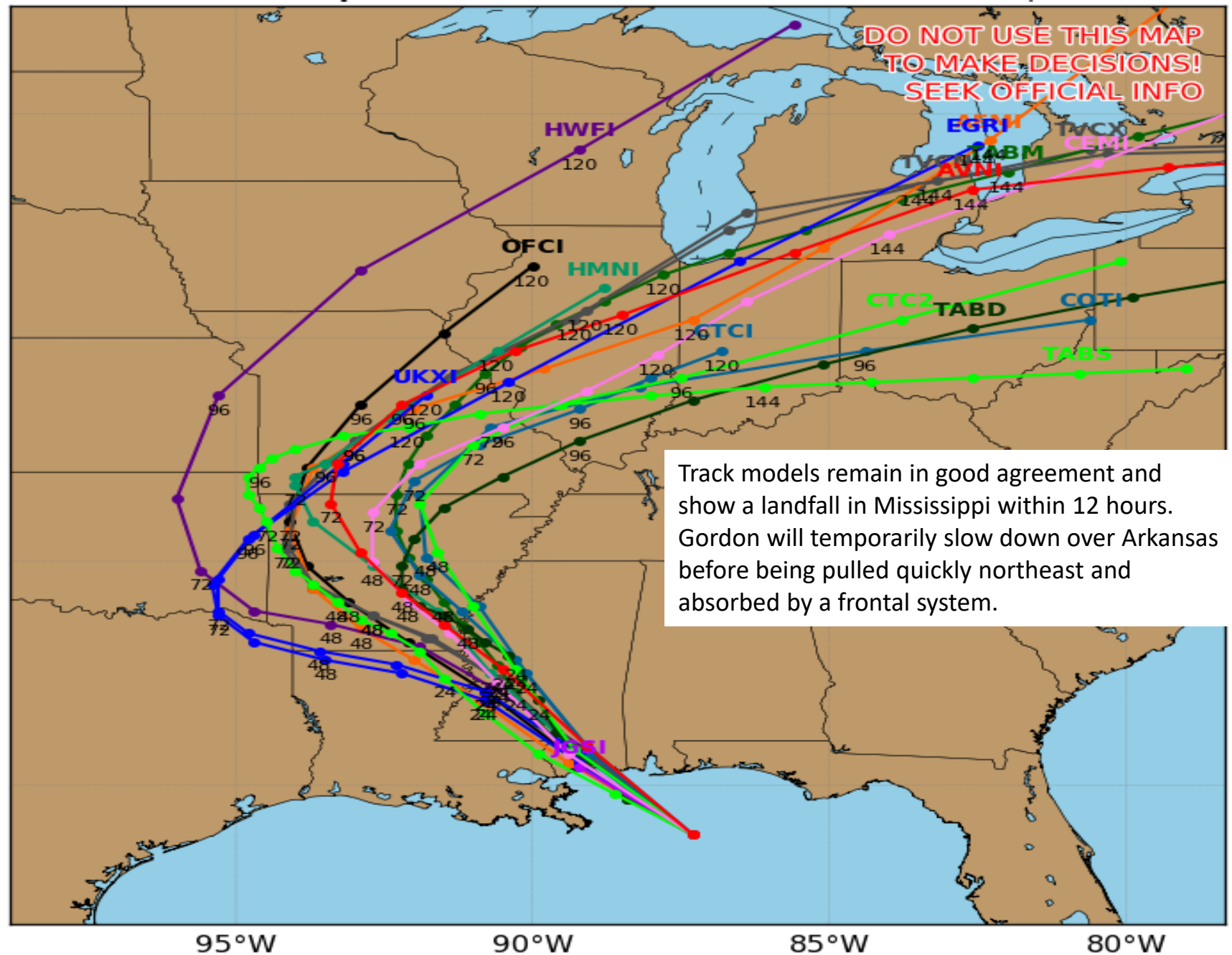
### Current wind extent:

Hurricane Trop Stm

# Tropical Storm GORDON Model Track Guidance

Initialized at 18z Sep 04 2018

Levi Cowan - tropicaltidbits.com

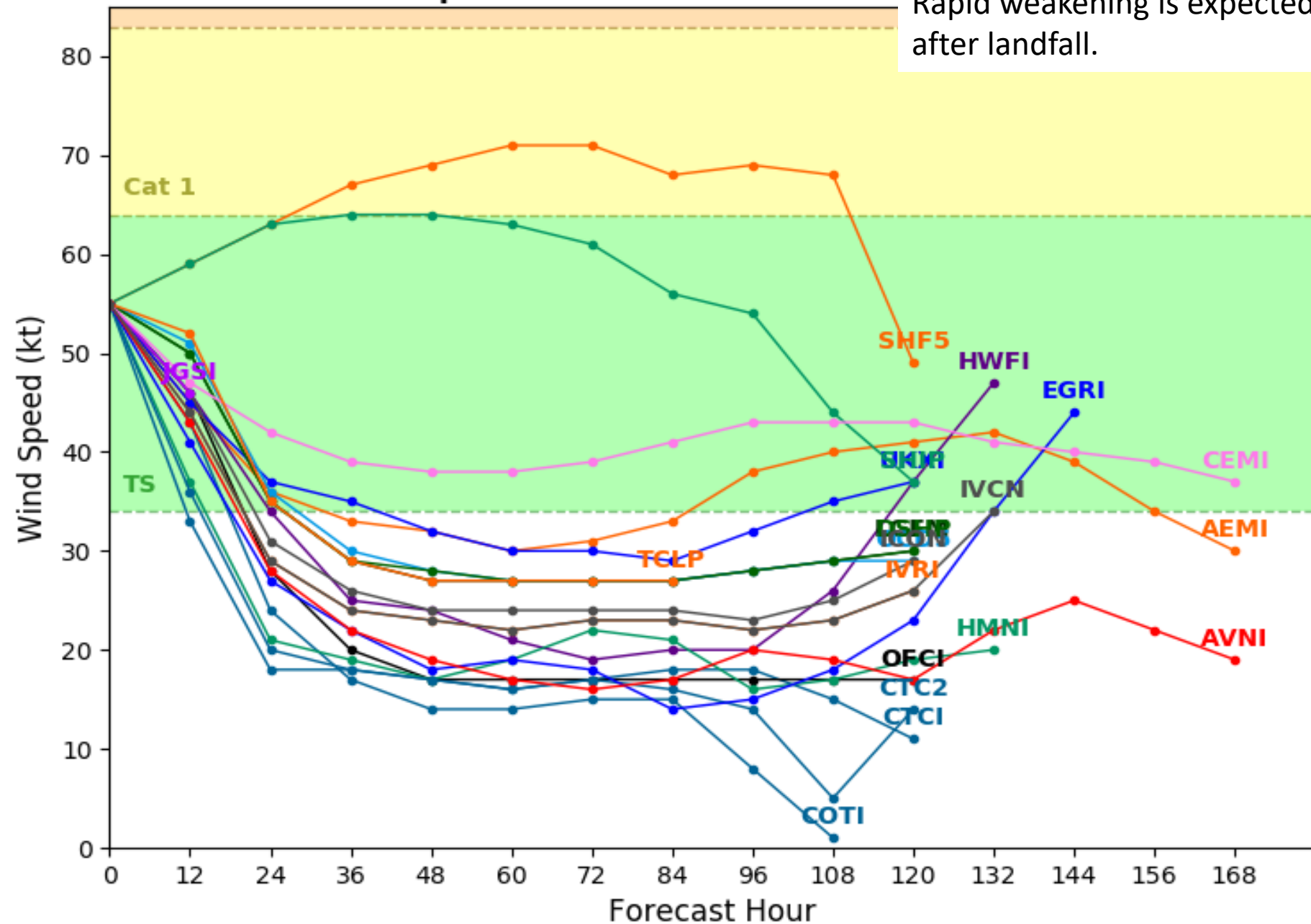


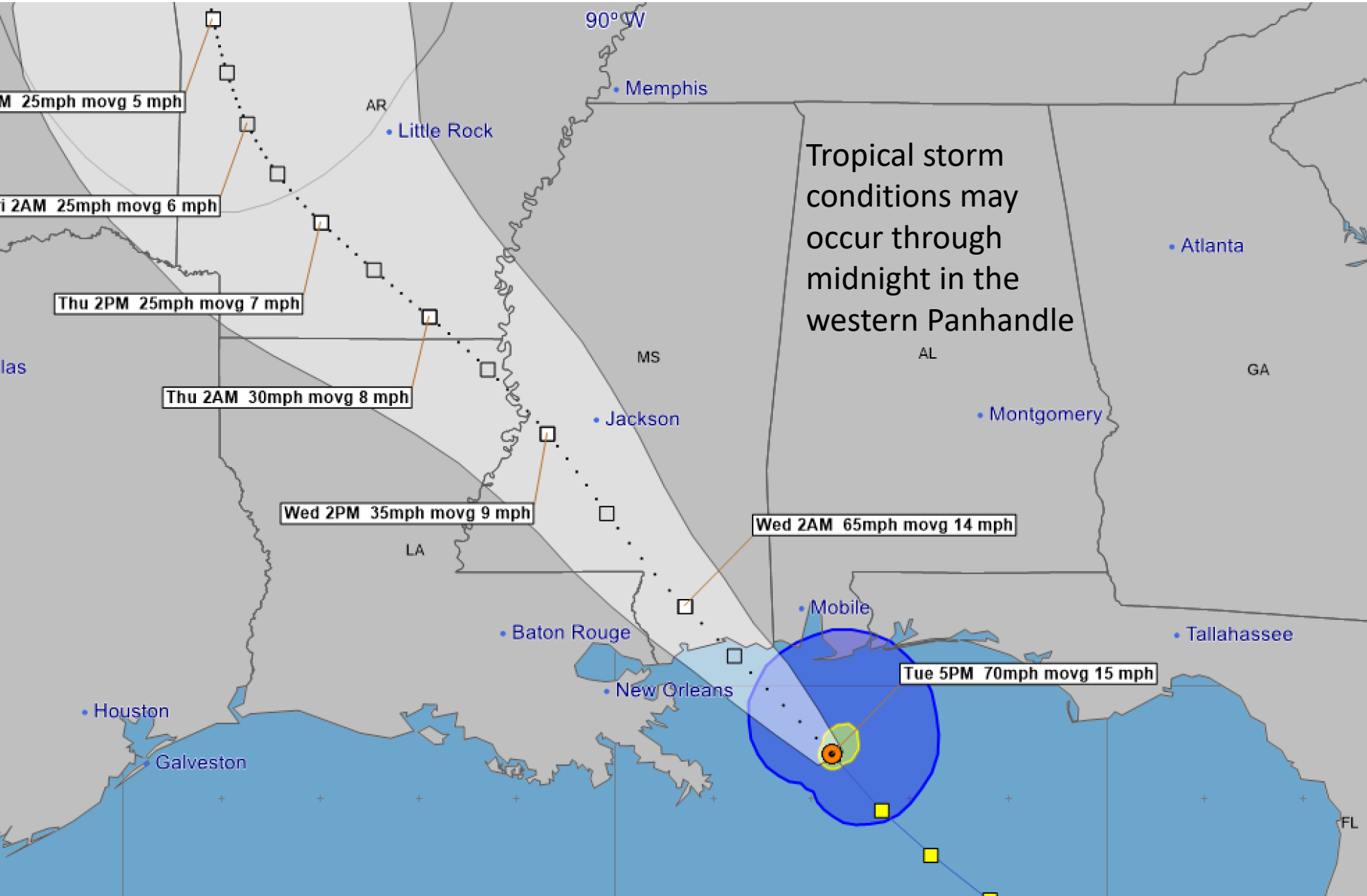


# Tropical Storm GORDON Model Intensity Guidance

Initialized at 18z Sep 04 2018

Rapid weakening is expected after landfall.





### Tropical Storm Gordon - Tuesday, September 4, 2018 5 PM EDT Advisory #10

Center Location: 29.4 N 87.8 W Maximum Sustained Winds: 70 mph Movement: 15 mph NW

forecast positions Potential Track Area: day 1-3 day 4-5 Surface Wind Field: at current location

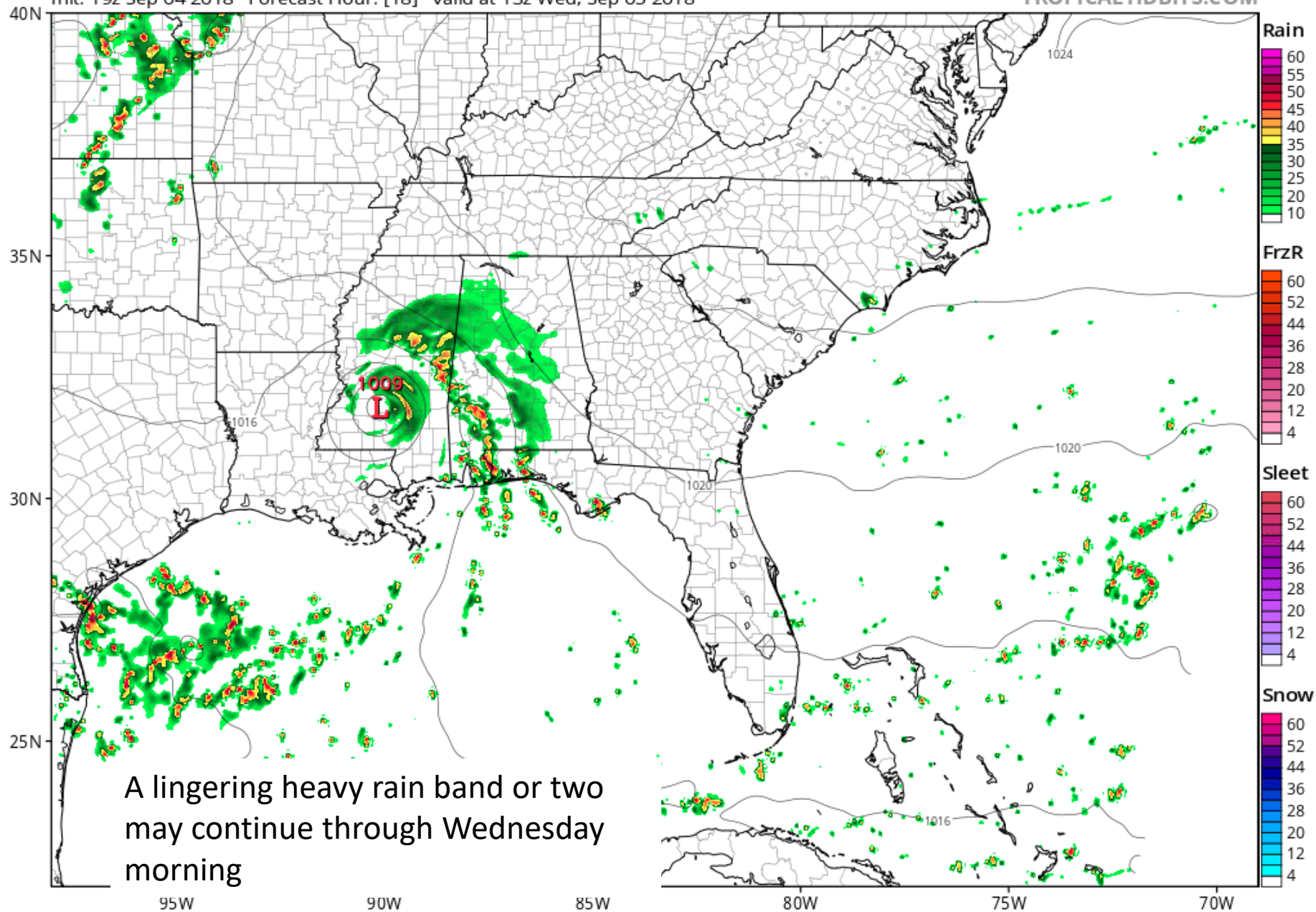
Sustained Wind Speeds: tropical storm  $\geq 34\text{kt}/39\text{mph}$  strong tropical storm  $\geq 50\text{kt}/58\text{mph}$  hurricane  $\geq 64\text{kt}/74\text{mph}$



# HRRR 1km AGL Reflectivity (dBZ) & MSLP (mb)

Init: 19z Sep 04 2018 Forecast Hour: [18] valid at 13z Wed, Sep 05 2018

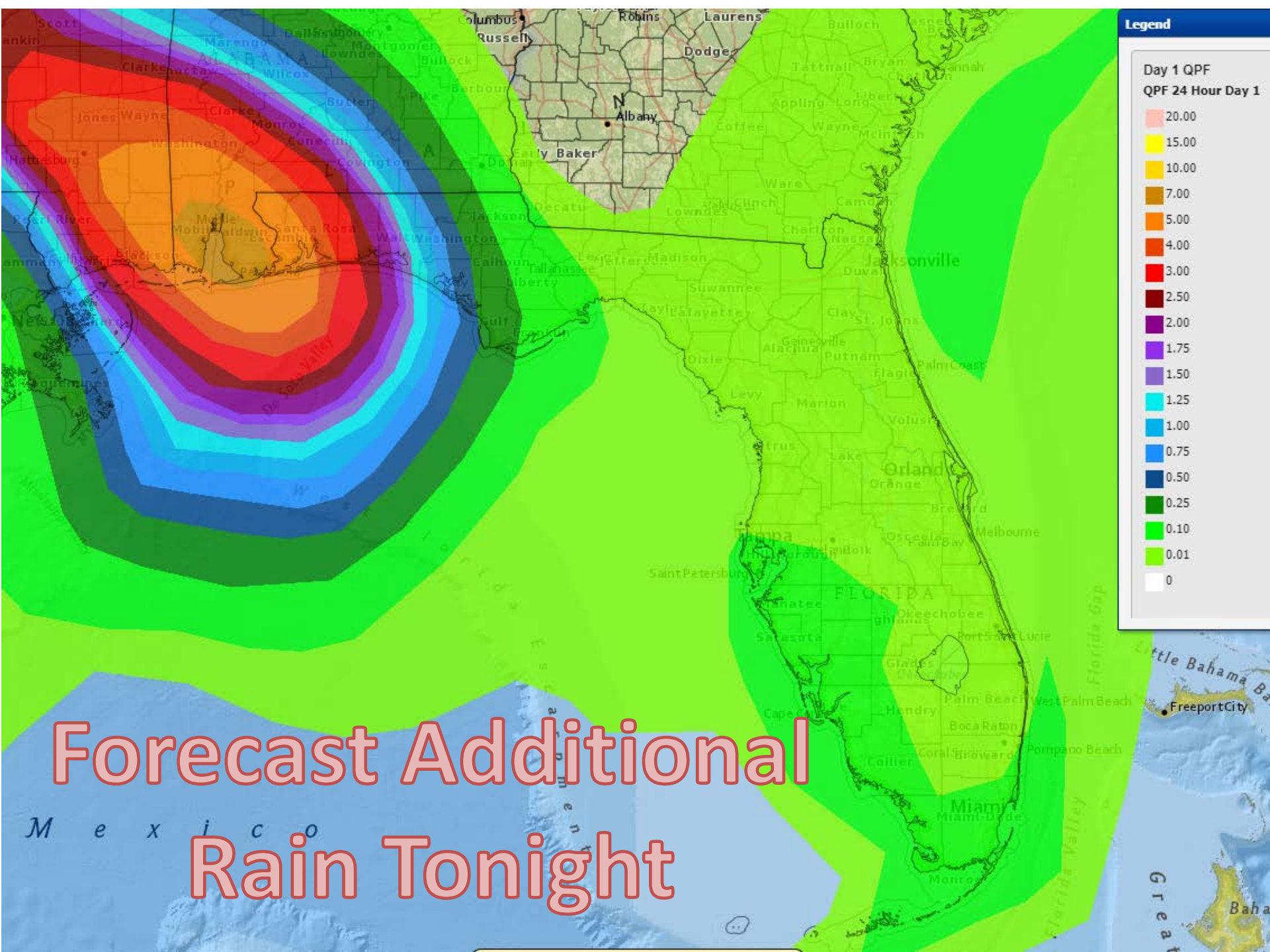
TROPICALTIDBITS.COM





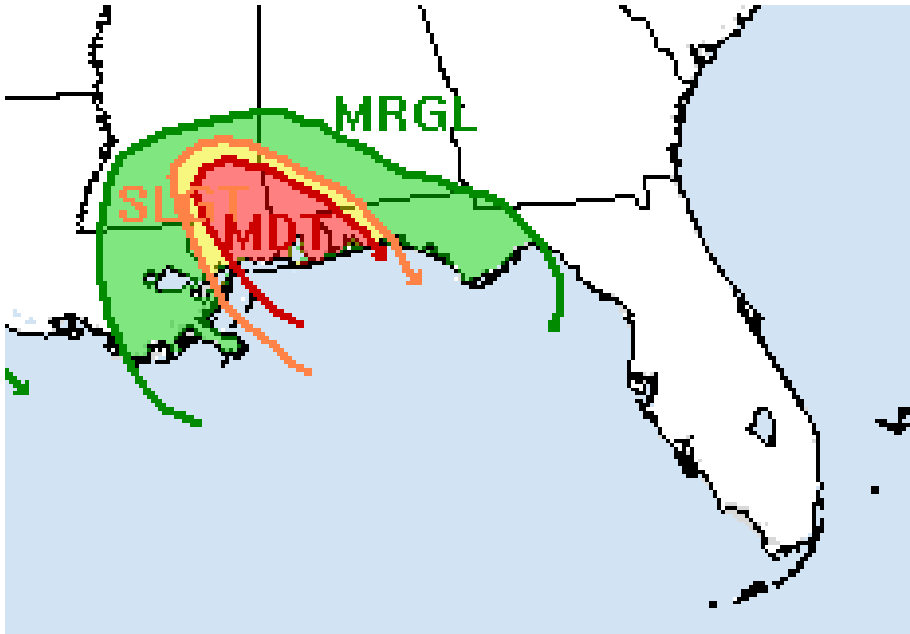
Estimated Rainfall  
So Far Today



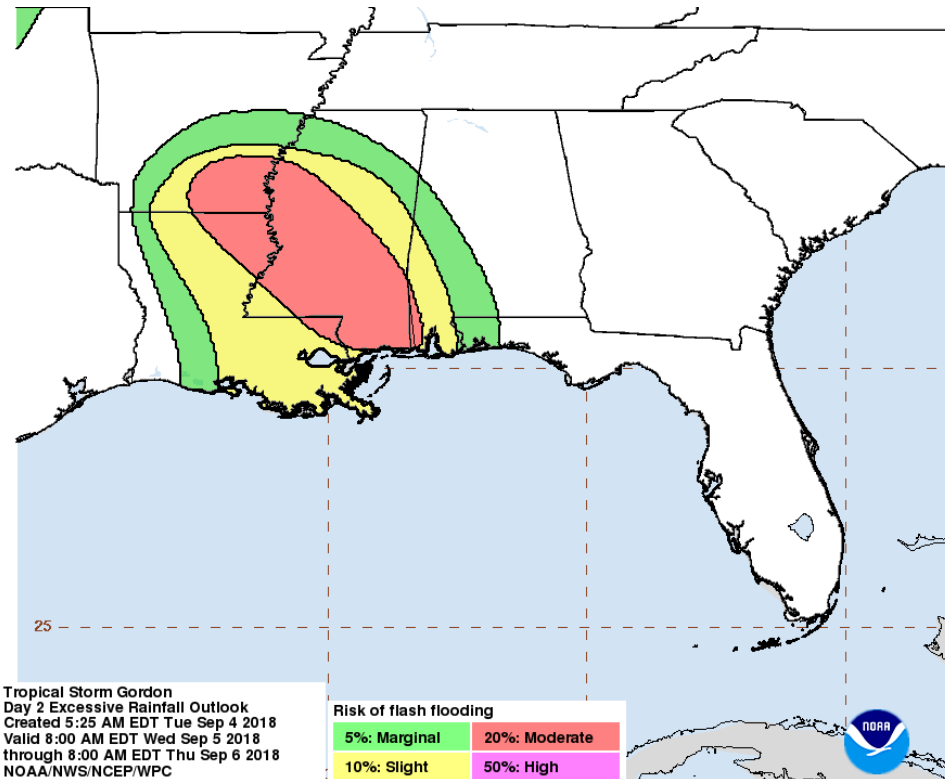


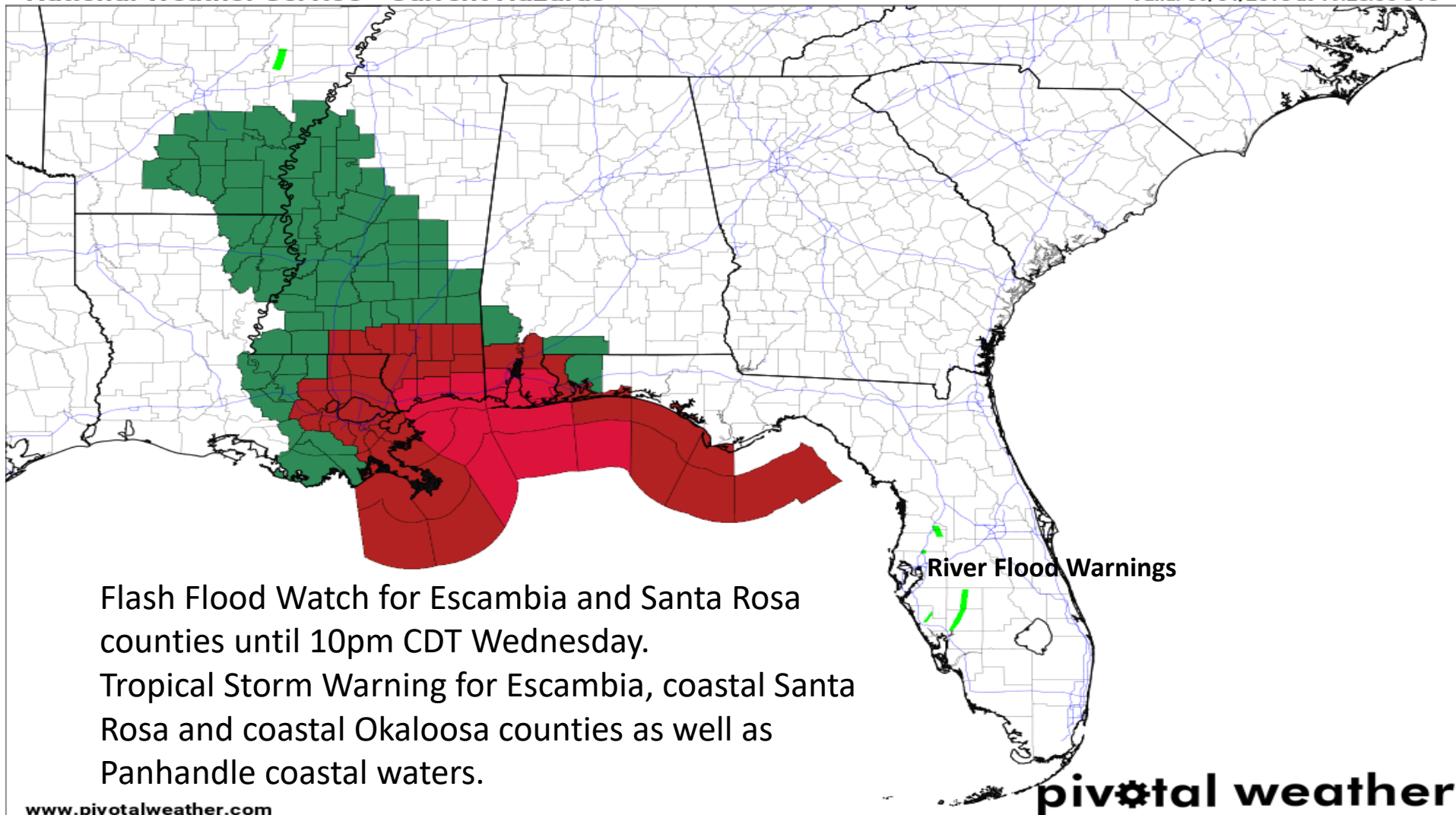
Forecast Additional  
Rain Tonight

# Flash Flood Threat Tonight and Wednesday



Some cases of Flash Flooding will be possible tonight in the western Panhandle, especially if heavy rain falls quickly. A lingering threat for isolated flash flooding will be possible early in the day on Wednesday.





[www.pivotalweather.com](http://www.pivotalweather.com)

#### Convective/Tropical

#### Flooding

#### Winter

#### Non-Precipitation

Tornado Warning  
 Tornado Watch  
 Severe Thunderstorm Warning  
 Severe Thunderstorm Watch  
 Hurricane Warning  
 Hurricane Watch  
 Tropical Storm Warning  
 Tropical Storm Watch

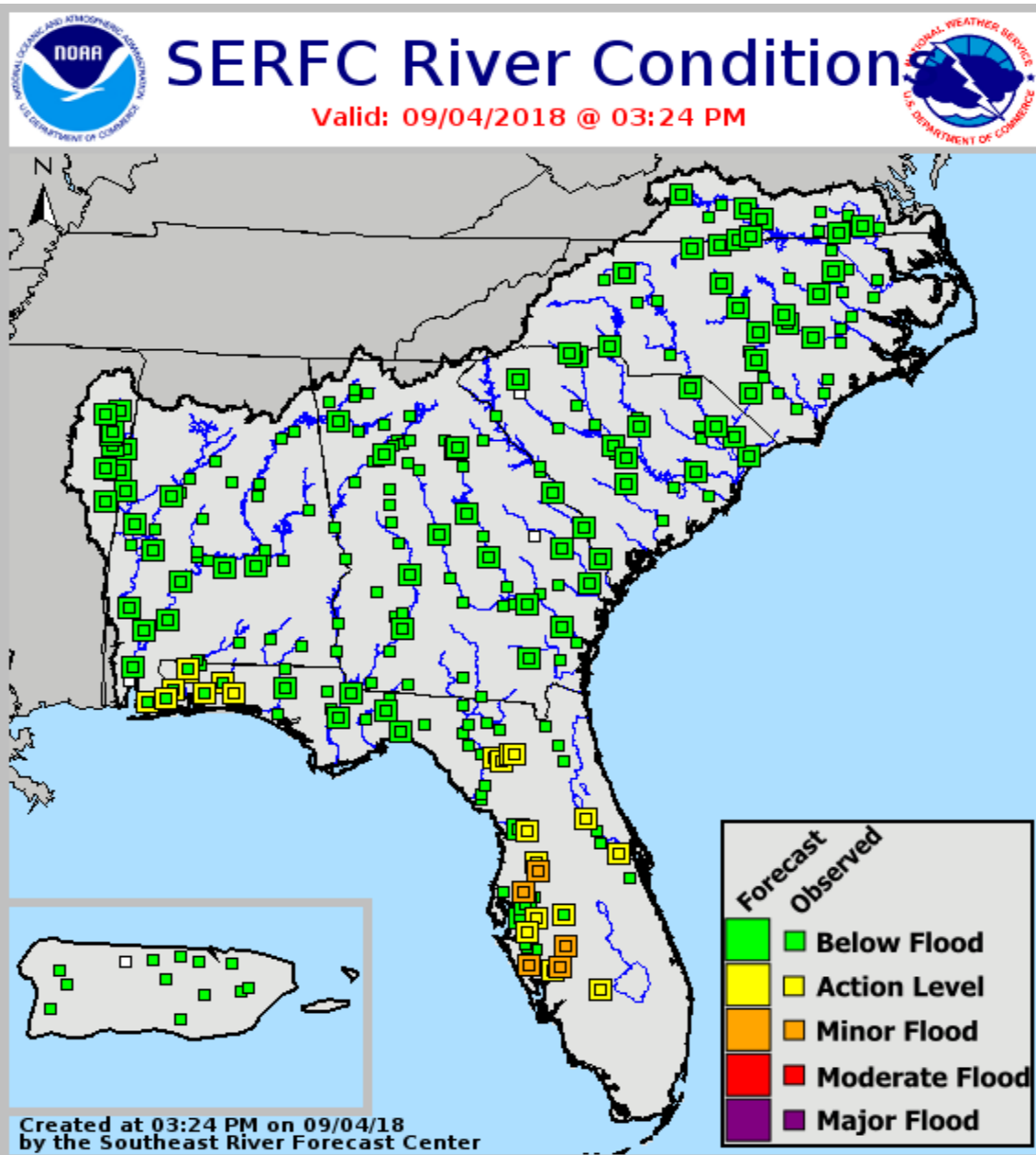
Flash Flood Warning  
 Flash Flood Watch  
 Flood Watch  
 Flood Warning  
 Coastal Flood Warning  
 Coastal Flood Watch

Blizzard Warning  
 Blizzard Watch  
 Ice Storm Warning  
 Winter Storm Warning  
 Winter Storm Watch  
 Winter Weather Advisory  
 Freeze Warning  
 Freeze Watch

Red Flag Warning  
 Excessive Heat Warning  
 Excessive Heat Watch  
 Heat Advisory  
 Dense Fog Advisory  
 High Wind Warning  
 High Wind Watch  
 Wind Advisory



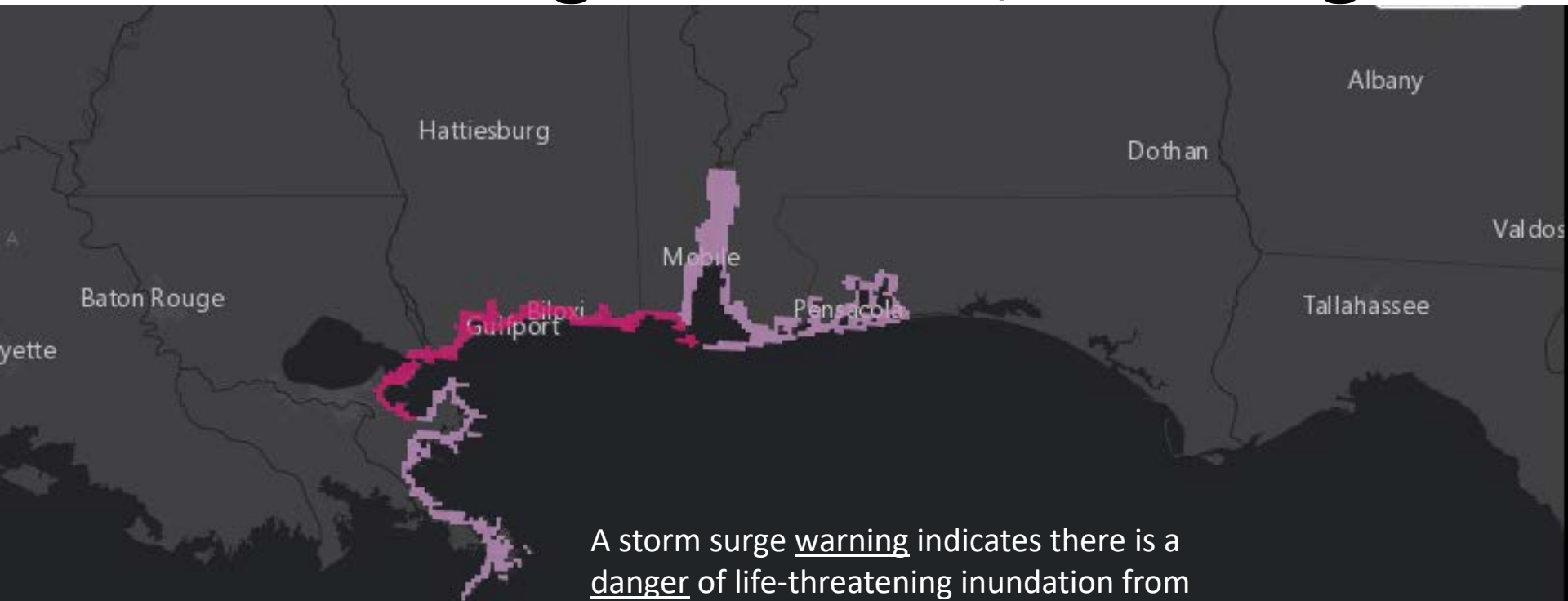
# Current and Forecast River Conditions



Several rivers in Central and Southwest Florida remain in minor flood stage, but significant flooding is not expected and most rivers are receding. Rises are expected on some Panhandle rivers, but significant flooding is not currently anticipated.

For more specifics on individual river levels, please visit the Southeast River Forecast Center at <https://www.weather.gov/serfc/>

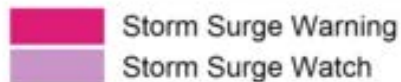
# Storm Surge Watches/Warnings



A storm surge warning indicates there is a danger of life-threatening inundation from rising water moving inland from the shoreline somewhere within the specified area, generally within 36 hours. A storm surge watch indicates that life-threatening inundation is possible somewhere within the specified area, generally within 48 hours.



Esri, HERE, Garmin, NGA, USGS, NPS | Esri, HERE, NPS



# STORM SURGE INUNDATION

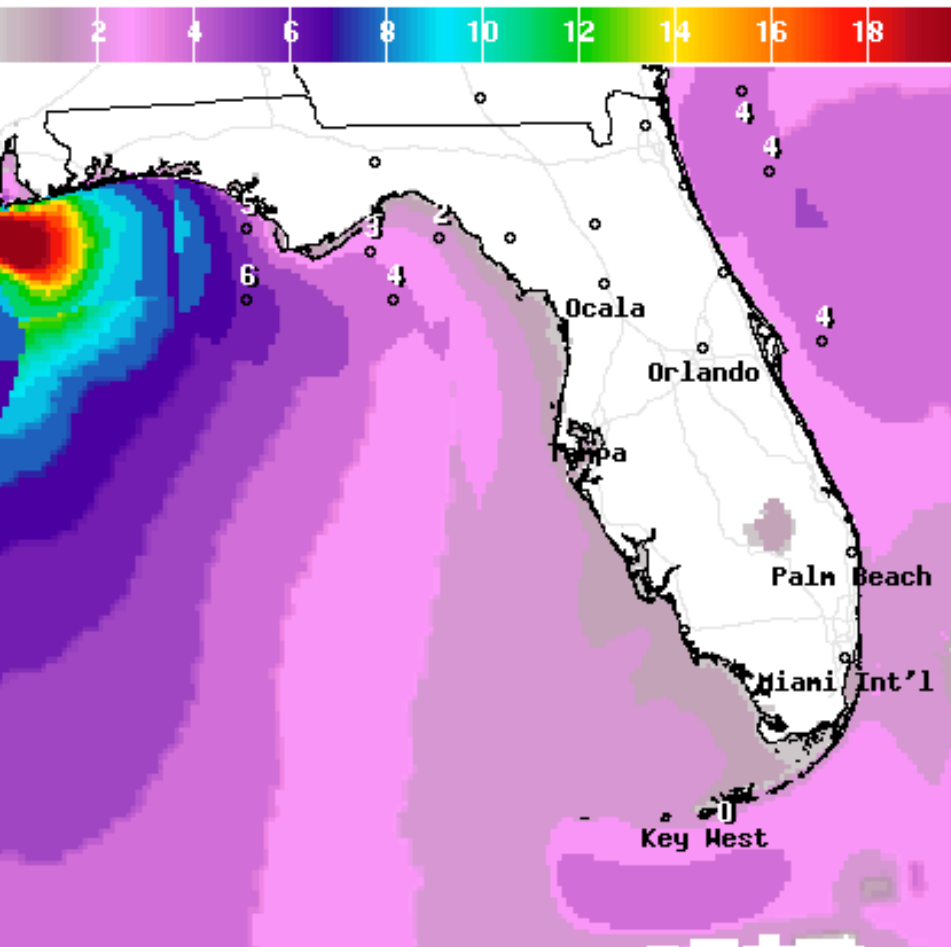
ABOVE GROUND LEVEL

IF PEAK SURGE OCCURS AT HIGH TIDE





# Forecast Wave Heights (ft)

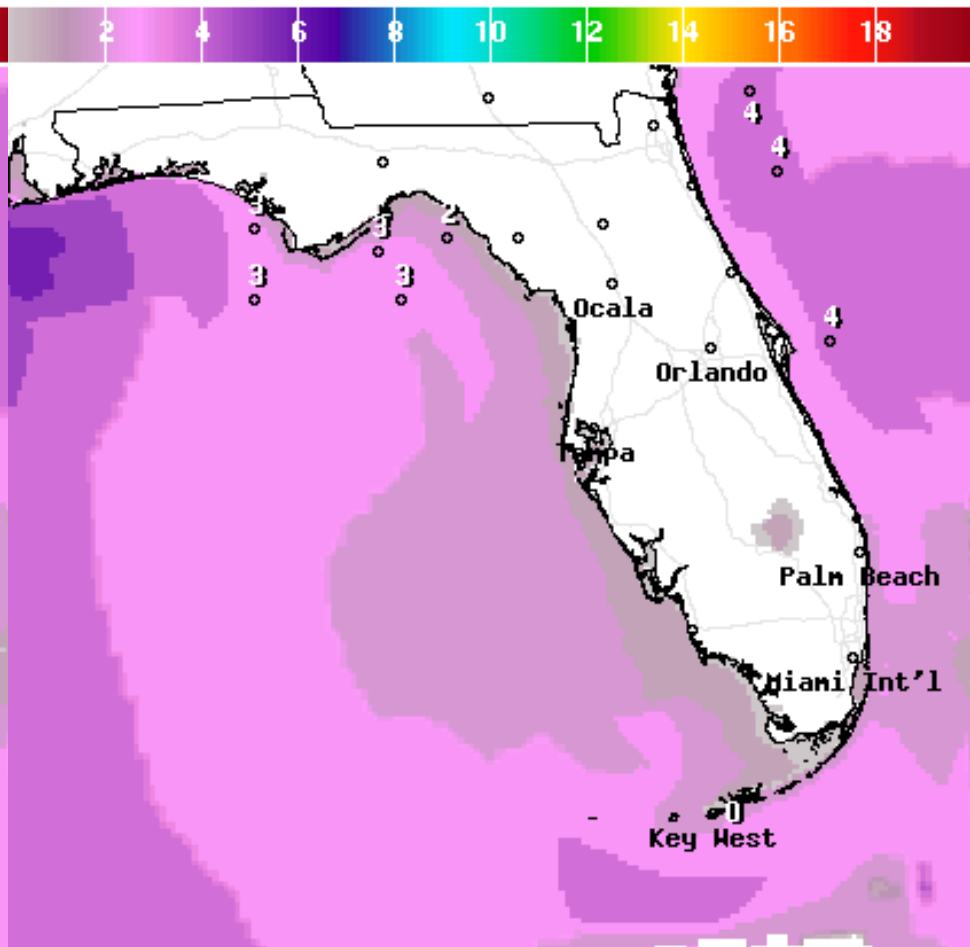


Wave Height(ft) Ending Tue Sep 04 2018 8PM EDT  
(Wed Sep 05 2018 00Z)



**National Digital Forecast Database**

19z issuance      Graphic created-Sep 04 3:34PM EDT



Wave Height(ft) Ending Wed Sep 05 2018 8AM EDT  
(Wed Sep 05 2018 12Z)

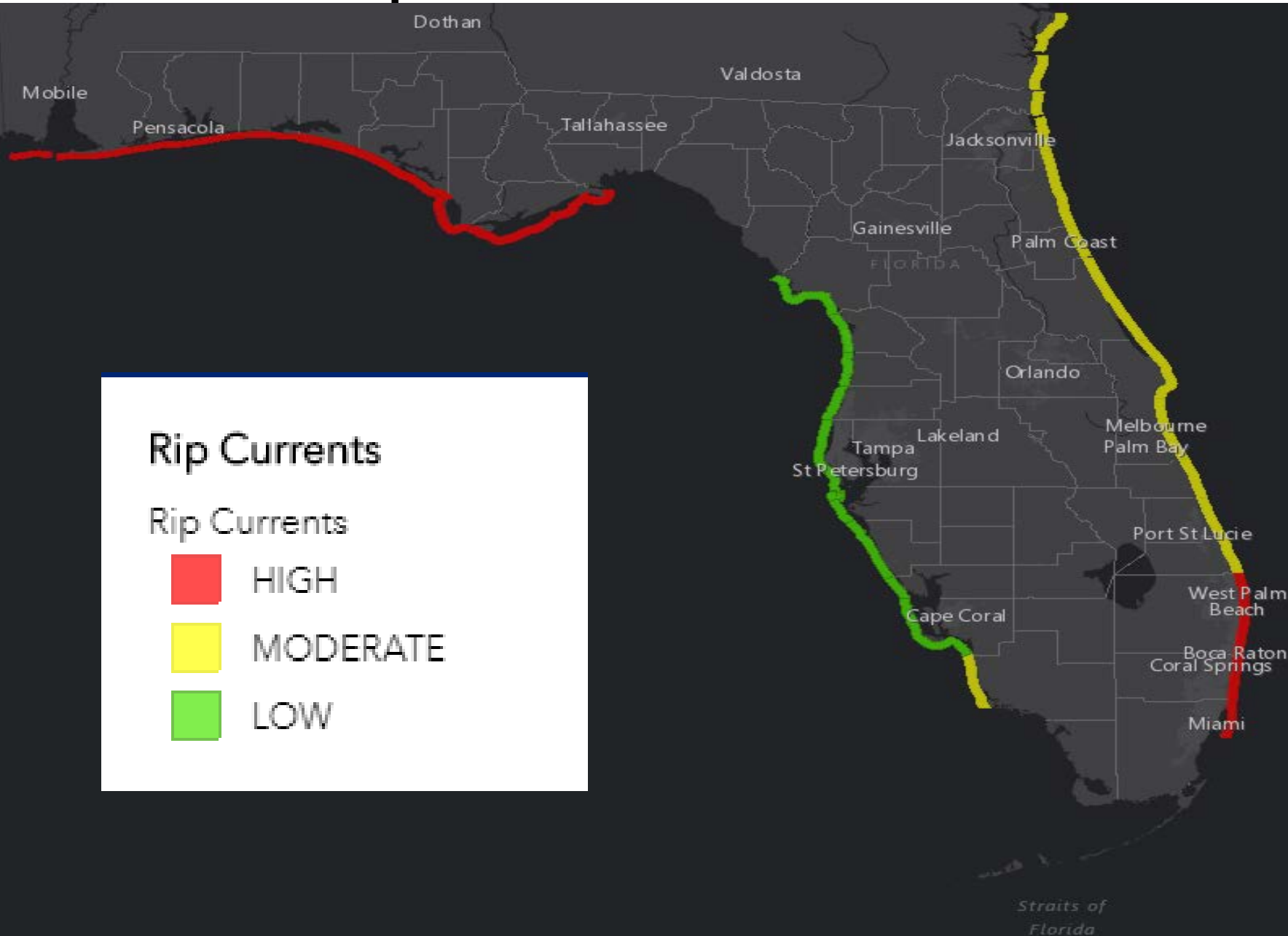
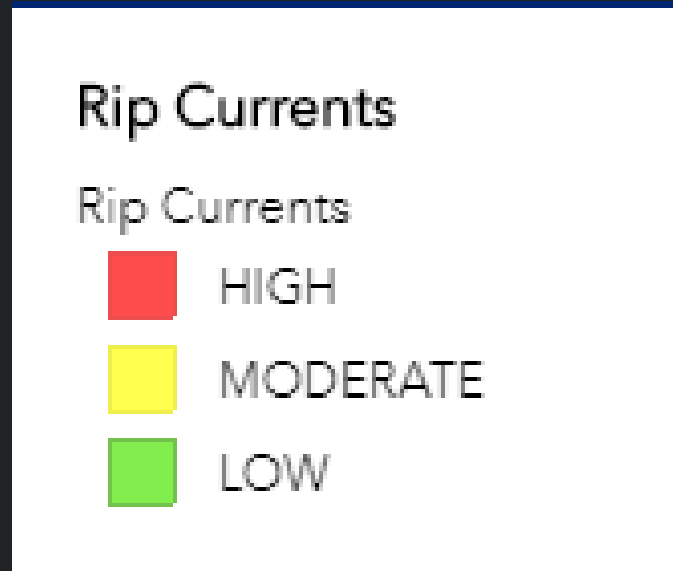


**National Digital Forecast Database**

19z issuance      Graphic created-Sep 04 3:34PM EDT



# Rip Current Forecast



## Severe Weather Outlook Tuesday, September 04, 2018

An isolated tornado or  
waterspout cannot be  
ruled out tonight within  
the outer bands of  
Gordon.



National Weather Service  
Storm Prediction Center

<http://www.spc.noaa.gov>

Pensacola  
Destin  
Panama City  
Tallahassee  
Gainesville  
Orlando  
Tampa  
Sarasota  
Ft. Myers  
Naples  
Key West  
Jacksonville  
Palm Coast  
Daytona Beach  
Cape Canaveral  
Melbourne  
Ft. Pierce  
West Palm Beach  
Ft. Lauderdale  
Miami  
Marathon

5	High
4	Moderate
3	Enhanced
2	Slight
1	Marginal
	Thunder



# Summary

- At 11am EDT Tuesday, Florence became the 3<sup>rd</sup> hurricane of the 2018 season while over the central Atlantic Ocean.
- Maximum sustained winds have increased to 85 mph. Some fluctuations in strength are expected through the next 3-4 days, followed by some strengthening again this weekend.
- This system is expected to have no impact on land for at least the next 5-7 days, but bears watching for possible large ocean swells reaching the U.S. East Coast next week and increasing the rip current risk.
- At 5pm EDT Tuesday, Tropical Storm Gordon was located over the northeastern Gulf of Mexico approximately 80 miles south-southwest of Pensacola, FL.
- Maximum sustained winds have increased to near 70mph and some additional possible to hurricane strength is possible before making landfall tonight on the Mississippi coast. Rapid weakening is expected after Gordon moves inland.
- Tropical-storm-force winds extend outward up to 80 miles from the center.
- In the far eastern Atlantic, a tropical wave (designated as Invest area 92L) located near the Cabo Verde Islands continues to produce a large area of disorganized showers and thunderstorms.
- Some slow development of this disturbance is possible during the next couple of days while the system moves slowly westward to west-northwestward across the eastern tropical Atlantic, but a tropical depression is likely to form by this weekend as environmental conditions gradually become conducive for further development.
- The National Hurricane Center is currently predicting a 30% (low) chance of development within the next 2 days, but a 80% (high) chance for development in 3-5 days.

## Florida Outlook:

- Locally heavy rainfall will continue to be the main impact to Florida from Tropical Storm Gordon.
- 1-3" of rain has already fallen today over portions of Franklin, Gulf, Calhoun and Bay counties. An additional 1-3" is possible tonight east of Destin, with rainfall amounts of 2-4" with isolated higher amounts of 4-6" possible tonight in the western Panhandle.
- A Flash Flood Watch is in effect for Escambia and Santa Rosa Counties through Wednesday.
- Many rivers across the state are elevated due to recent rainfall, but significant river flooding is not currently expected.
- Tropical Storm Warnings remain in effect for Escambia, coastal Santa Rosa and coastal Okaloosa counties for expected winds in the 25-50mph range, primarily within heavy rain bands. This may result in limited damage, mainly to unsecured lightweight objects, fences and tree limbs which may result in minor power and communications outages.
- Storm Surge Watches remain in effect for coastal Escambia and Santa Rosa counties for the possibility of as much as 2-4' of storm surge. Peak surge in the Panhandle may occur tonight. High tide will occur around sunrise.
- High waves will continue to produce a high risk of rip currents at all Florida Panhandle beaches through the next few days.
- An isolated tornado or waterspout across the Florida Panhandle and western Big Bend is possible tonight. No Tornado Watches or Warnings are currently in effect, but could be issued.

Another briefing packet will be sent out Wednesday morning. For the latest information on the tropics, please visit the National Hurricane Center website at [www.hurricanes.gov](http://www.hurricanes.gov).



# TROPICAL UPDATE

Created by:

Amy Godsey, Chief State Meteorologist

[Amy.Godsey@em.myflorida.com](mailto:Amy.Godsey@em.myflorida.com)

State Meteorological Support Unit  
Florida Division of Emergency  
Management

Users wishing to subscribe (approval pending) to this distribution list, register at [https://public.govdelivery.com/accounts/FLDEM/subscriber/new?topic\\_id=SERT\\_Met\\_Tropics](https://public.govdelivery.com/accounts/FLDEM/subscriber/new?topic_id=SERT_Met_Tropics).

Other reports available for subscription are available at

<https://public.govdelivery.com/accounts/FLDEM/subscriber/new?preferences=true>