



TROPICAL UPDATE

10 AM EDT

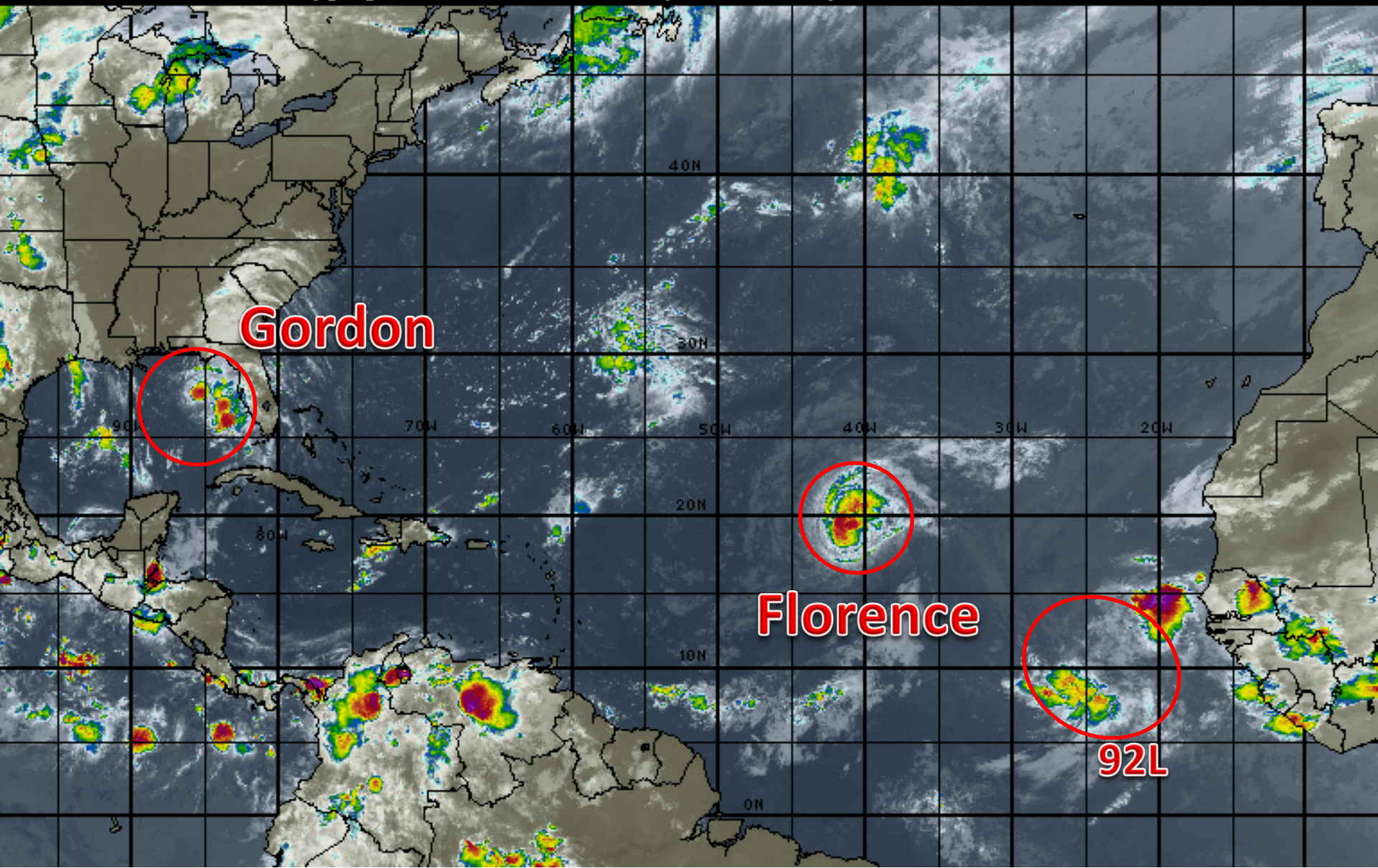
Tuesday, September 4, 2018

**Tropical Storm Florence, Tropical Storm
Gordon & Invest 92L (70%)**

This update is intended for government and emergency response officials, and is provided for informational and situational awareness purposes only. Forecast conditions are subject to change based on a variety of environmental factors. For additional information, or for any life safety concerns with an active weather event please contact your County Emergency Management or Public Safety Office, local National Weather Service forecast office or visit the National Hurricane Center website at www.nhc.noaa.gov.

Atlantic Basin Satellite Image

09:00 04-SEP-2018 GMT Copyright © 1998-2018 WSI Corporation <http://www.wsi.com>





Five-Day Graphical Tropical Weather Outlook

National Hurricane Center Miami, Florida



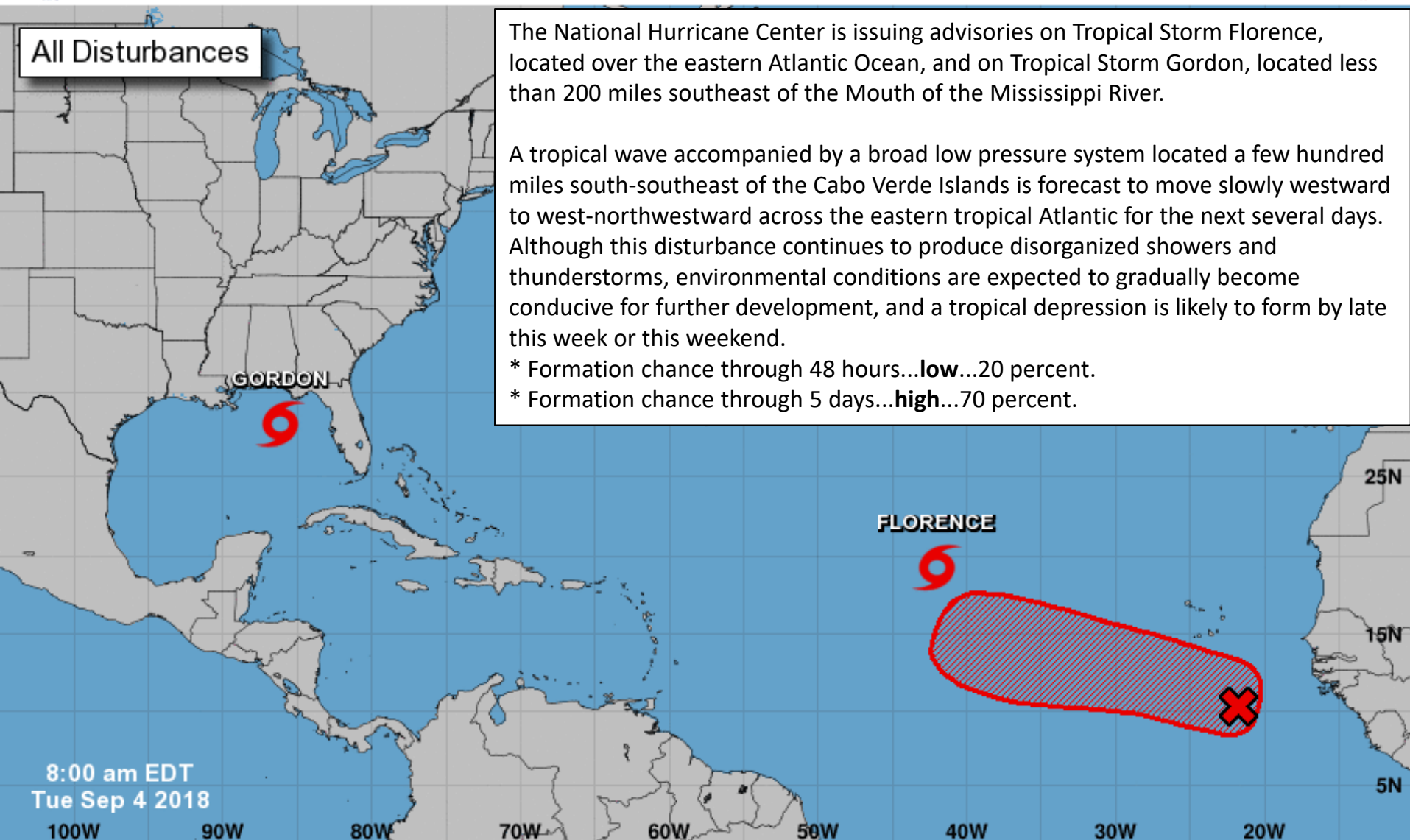
All Disturbances

The National Hurricane Center is issuing advisories on Tropical Storm Florence, located over the eastern Atlantic Ocean, and on Tropical Storm Gordon, located less than 200 miles southeast of the Mouth of the Mississippi River.

A tropical wave accompanied by a broad low pressure system located a few hundred miles south-southeast of the Cabo Verde Islands is forecast to move slowly westward to west-northwestward across the eastern tropical Atlantic for the next several days. Although this disturbance continues to produce disorganized showers and thunderstorms, environmental conditions are expected to gradually become conducive for further development, and a tropical depression is likely to form by late this week or this weekend.

* Formation chance through 48 hours...**low**...20 percent.

* Formation chance through 5 days...**high**...70 percent.

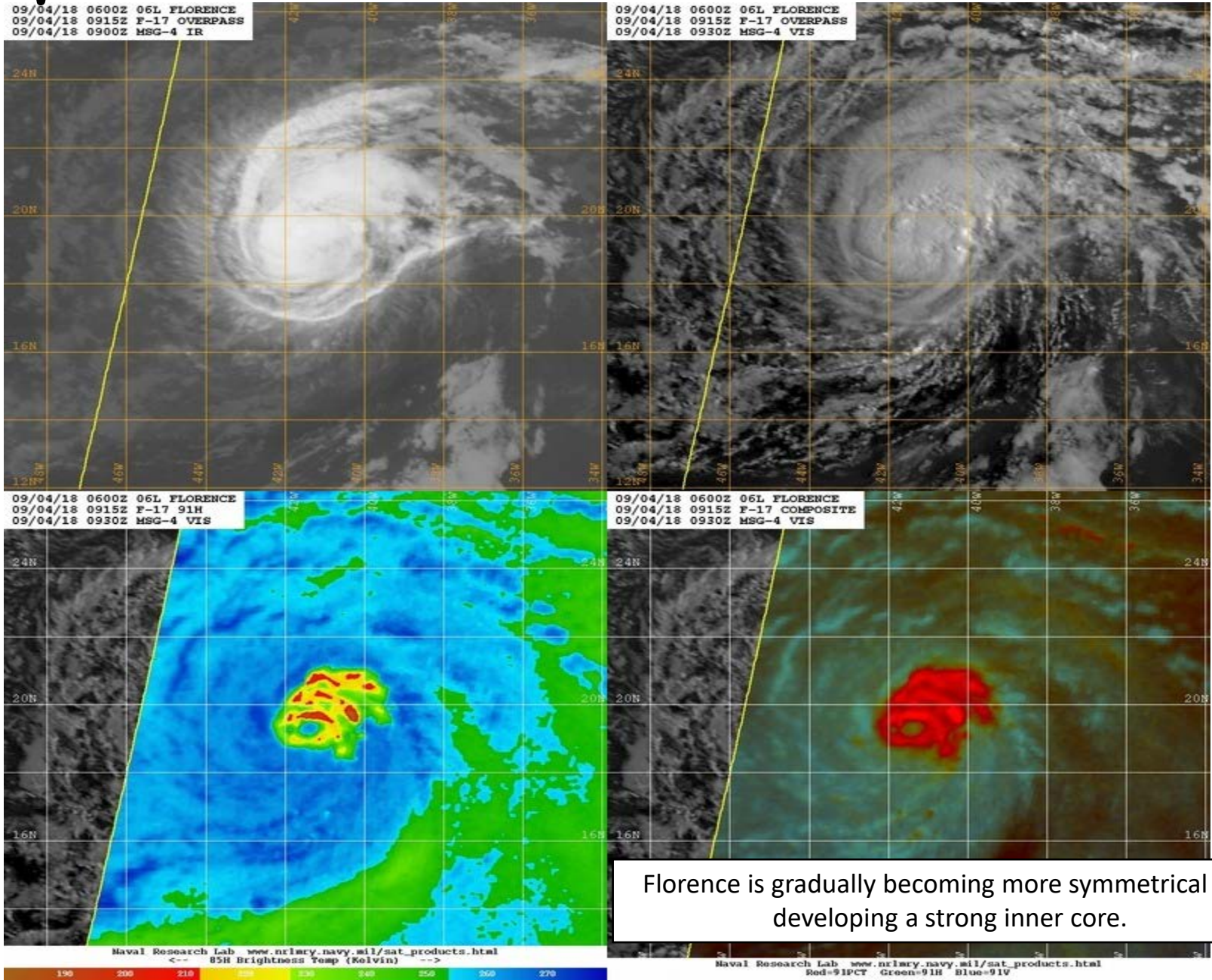


Current Disturbances and Five-Day Cyclone Formation Chance: < 40% 40-60% > 60%

Tropical or Sub-Tropical Cyclone: Depression Storm Hurricane

Post-Tropical Cyclone or Remnants

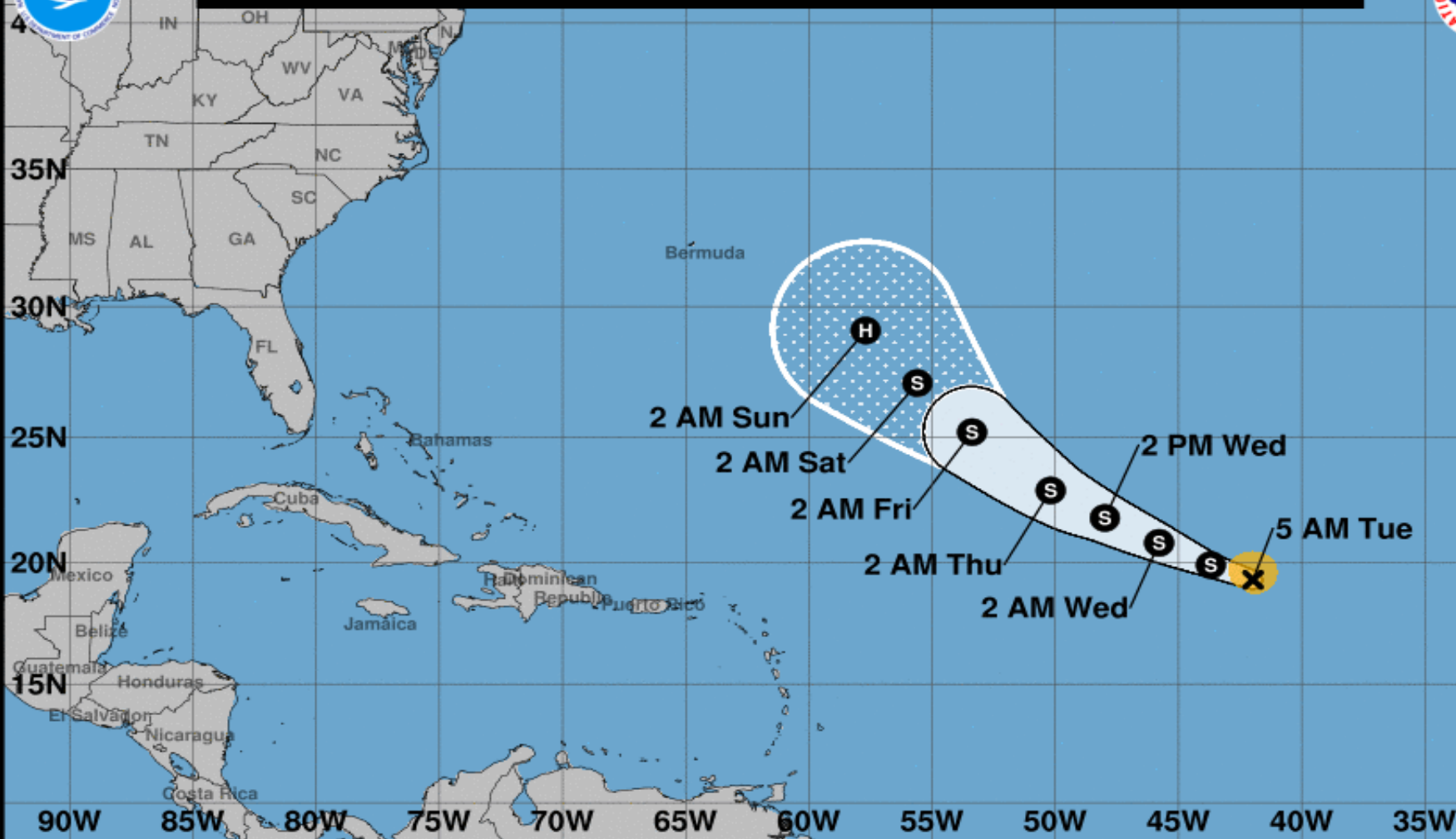
Tropical Storm Florence Satellite Image



Florence is gradually becoming more symmetrical and developing a strong inner core.



Note: The cone contains the probable path of the storm center but does not show the size of the storm. Hazardous conditions can occur outside of the cone.



Tropical Storm Florence

Tuesday September 04, 2018

5 AM AST Advisory 20

NWS National Hurricane Center

Current information: x

Center location 19.3 N 42.0 W

Maximum sustained wind 70 mph

Movement WNW at 13 mph

Forecast positions:

● Tropical Cyclone ○ Post/Potential TC

Sustained winds: D < 39 mph

S 39-73 mph H 74-110 mph M > 110 mph

Potential track area:

Day 1-3 Day 4-5

Watches:

Hurricane Trop Stm

Warnings:

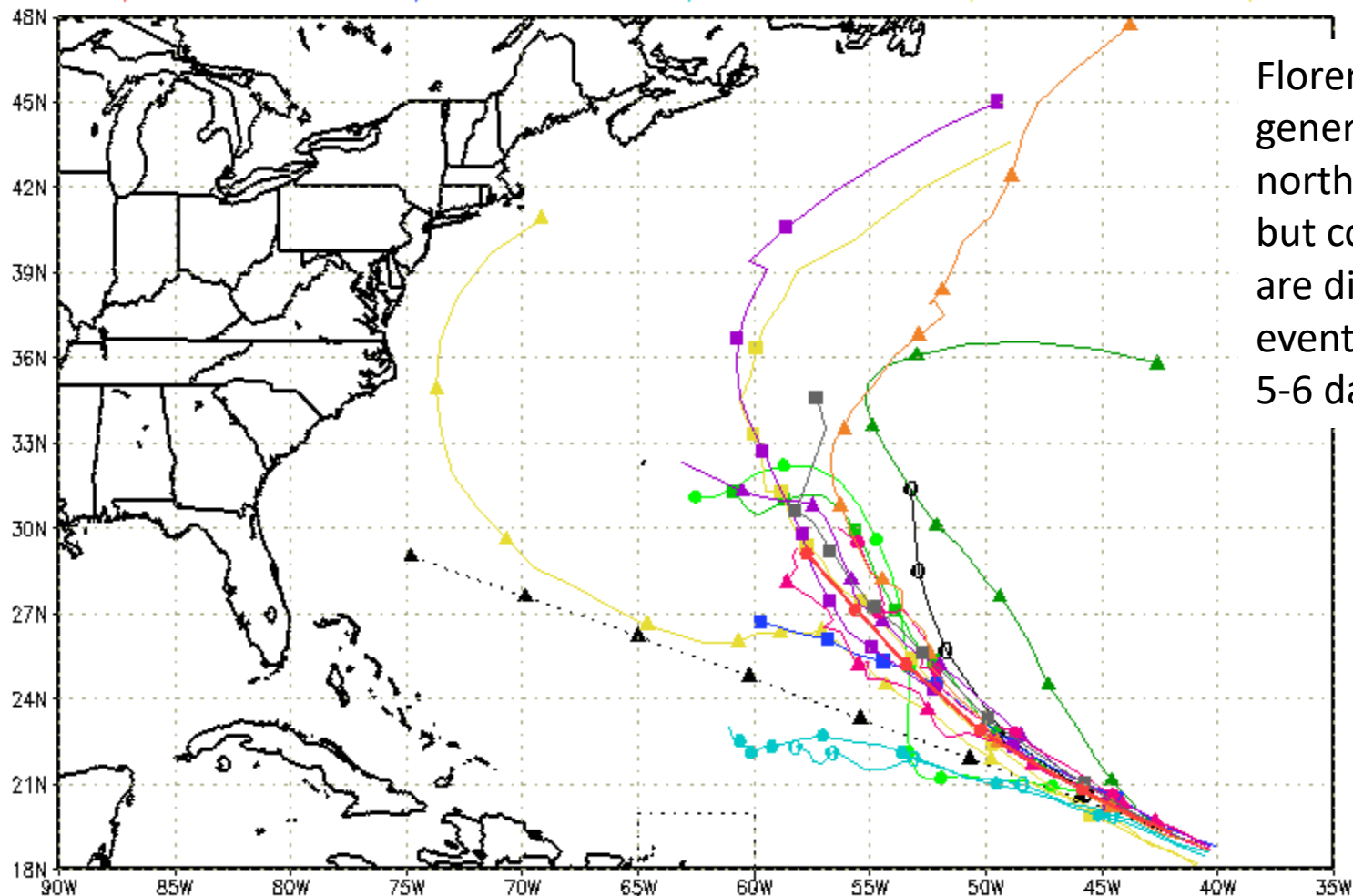
Hurricane Trop Stm

Current wind extent:

Hurricane Trop Stm

Track Models (Florence)

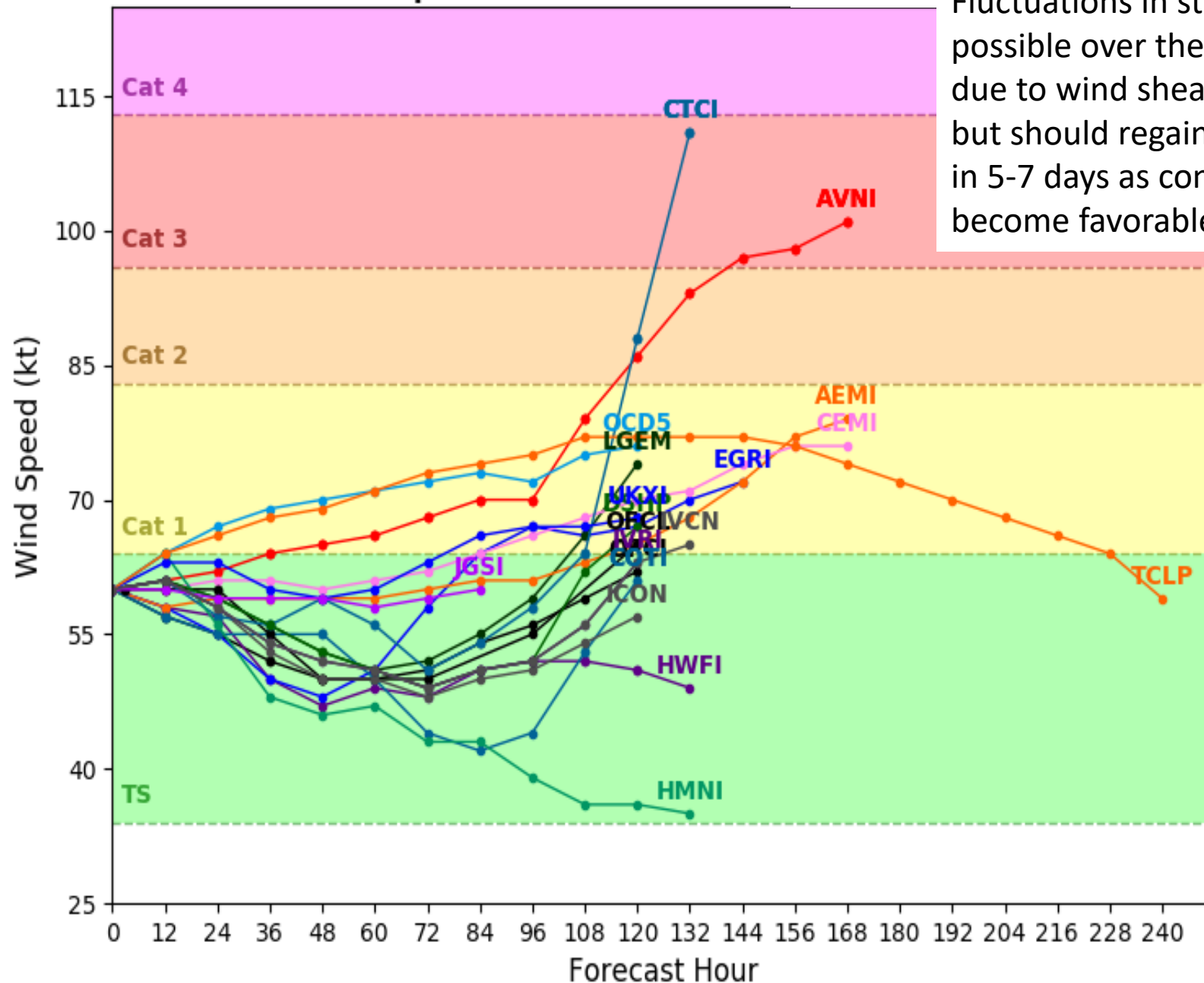
--▲-- XTRP 04/0600Z ▲ TABD 04/0600Z ▲ HMON 04/0000Z ▲ AVNO 04/0000Z ▲ ECMF 04/0000Z
 --○-- CLP5 04/0600Z ■ TABM 04/0600Z ■ HWRF 04/0000Z ■ AEMN 04/0000Z ■ EEMN 04/0000Z
 --■-- TVCN 04/0600Z ● TABS 04/0600Z ● NVGM 04/0000Z ● APxx 04/0000Z ● EExx 04/0000Z
 ● NHC 04/0900Z ■ UKM 04/0000Z ○ COTC 04/0000Z ▲ CMC 04/0000Z ■ GEMN 04/0000Z



Florence will move generally west-northwest this week, but computer models are diverging on eventual track beyond 5-6 days.

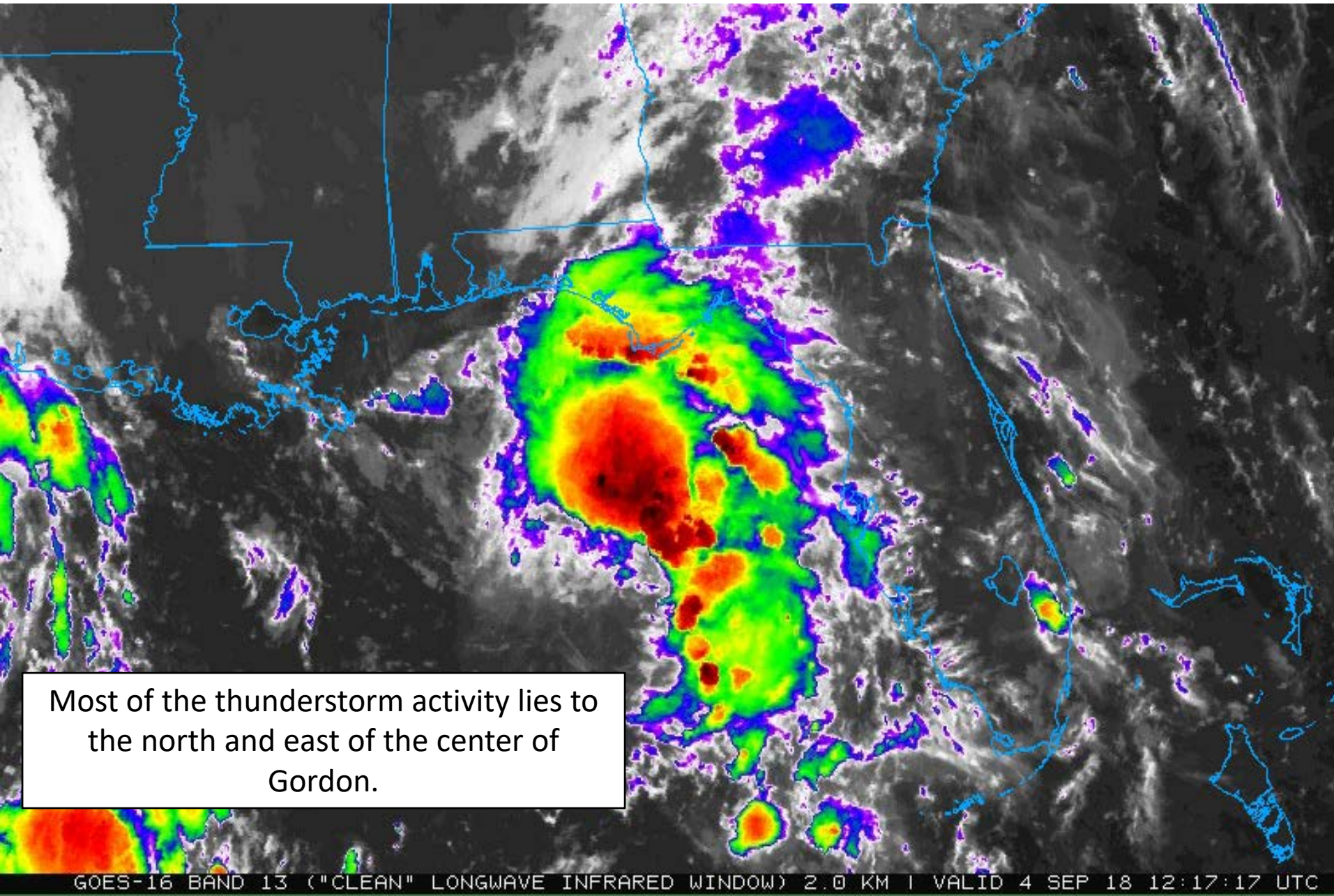
Tropical Storm FLORENCE Model Intensity Guidance

Initialized at 06z Sep 04 2018



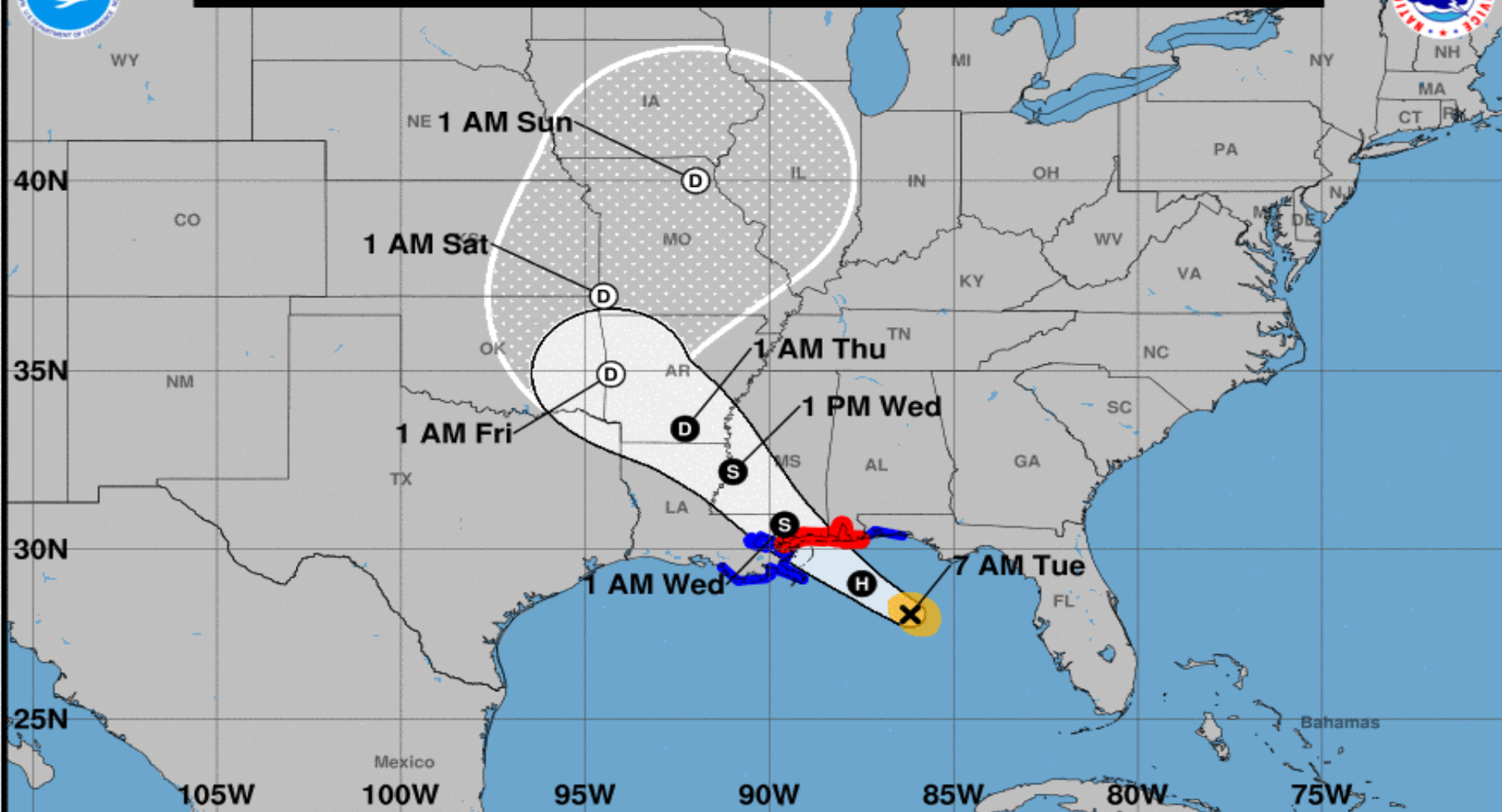
Fluctuations in strength are possible over the next 4 days due to wind shear influences, but should regain some strength in 5-7 days as conditions become favorable again.

Tropical Storm Gordon Satellite Image





Note: The cone contains the probable path of the storm center but does not show the size of the storm. Hazardous conditions can occur outside of the cone.



Tropical Storm Gordon

Tuesday September 04, 2018

7 AM CDT Intermediate Advisory 8A

NWS National Hurricane Center

Current information: x

Center location 28.1 N 86.2 W

Maximum sustained wind 65 mph

Movement WNW at 15 mph

Forecast positions:

● Tropical Cyclone ○ Post/Potential TC

Sustained winds: D < 39 mph

S 39-73 mph H 74-110 mph M > 110 mph

Potential track area:

Day 1-3 Day 4-5

Watches:

Hurricane Trop Stm

Warnings:

Hurricane Trop Stm

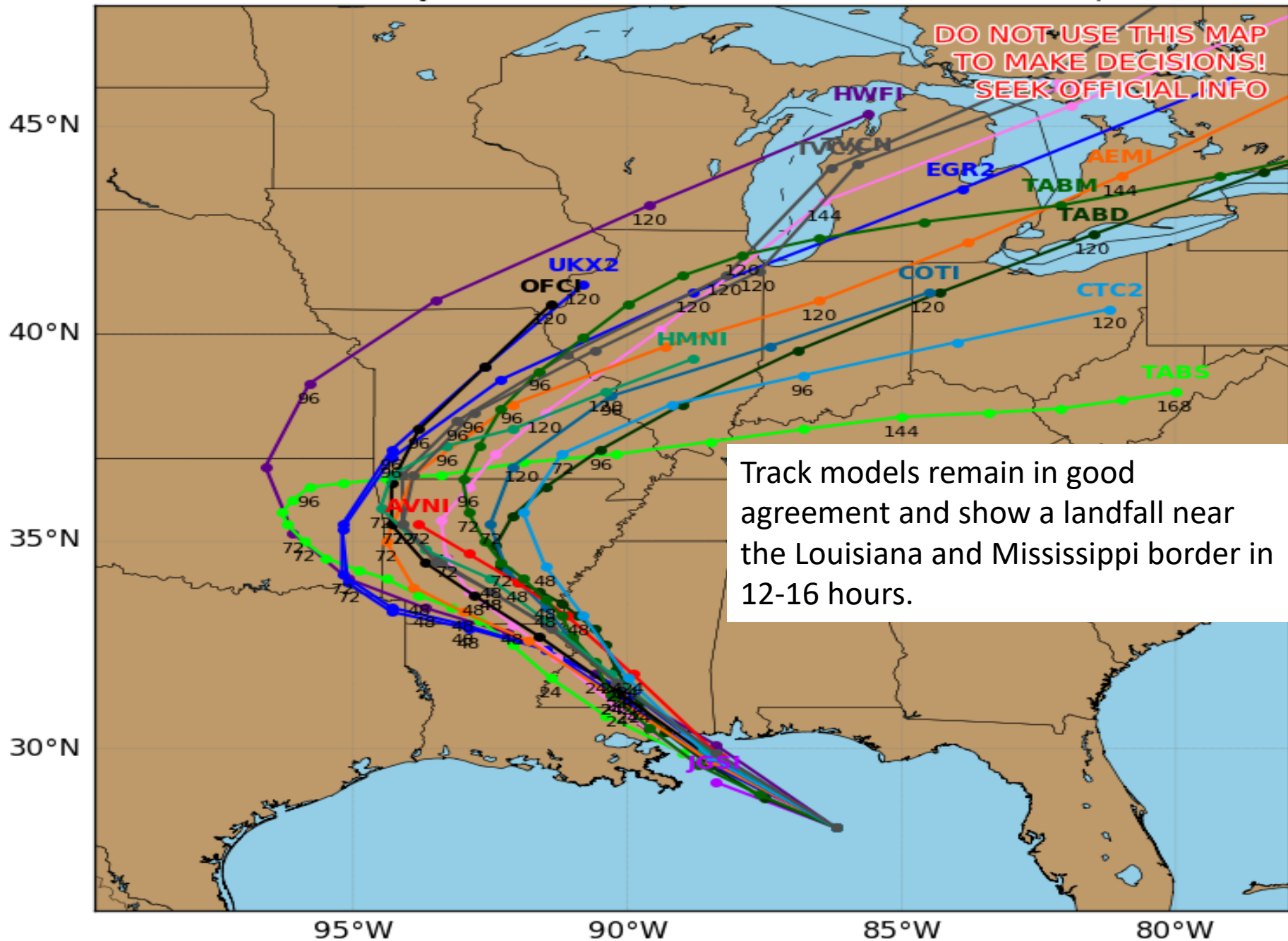
Current wind extent:

Hurricane Trop Stm

Tropical Storm GORDON Model Track Guidance

Initialized at 12z Sep 04 2018

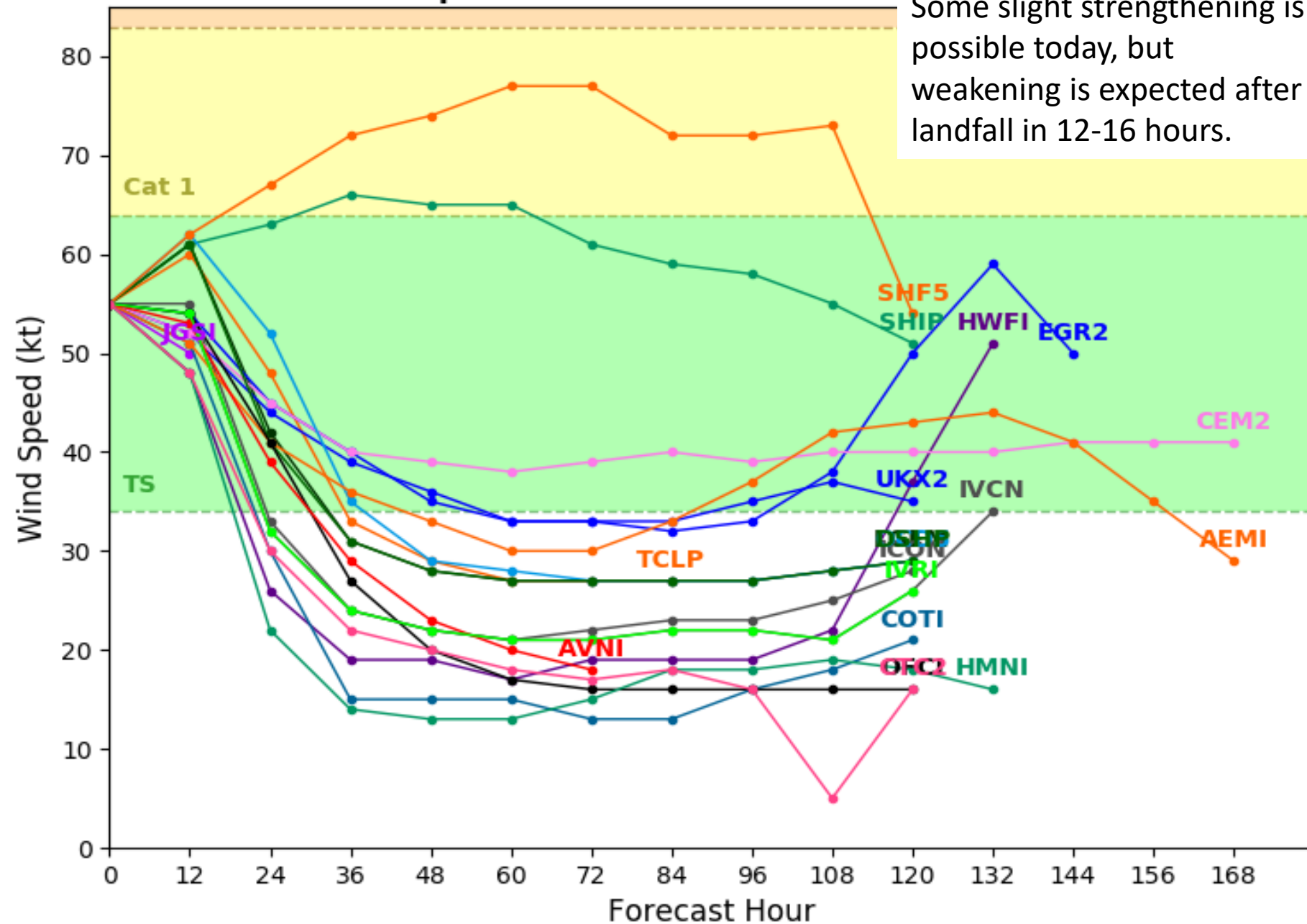
Levi Cowan - tropicaltidbits.com

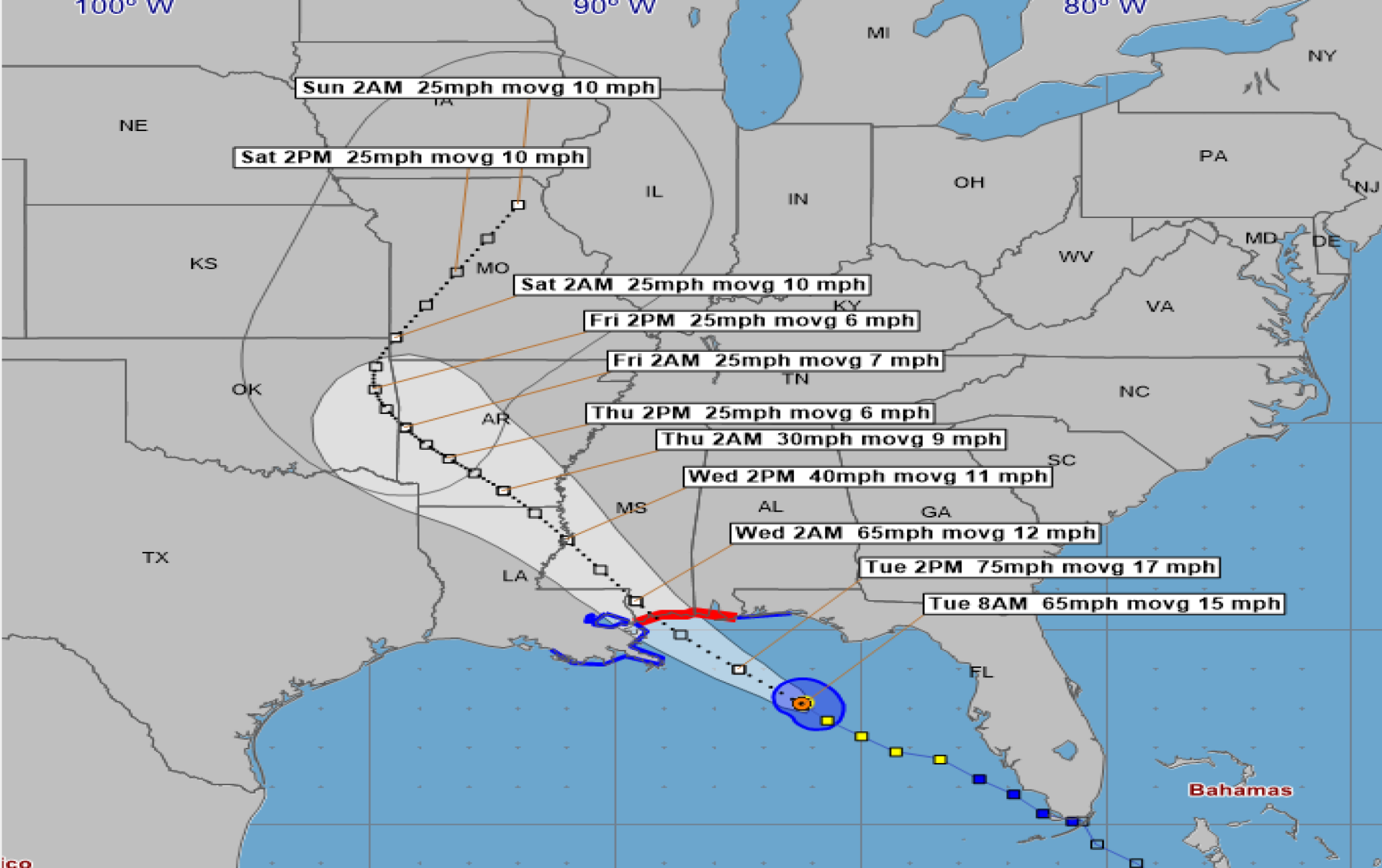


Tropical Storm GORDON Model Intensity Guidance

Initialized at 12z Sep 04 2018

Some slight strengthening is possible today, but weakening is expected after landfall in 12-16 hours.





Tropical Storm Gordon - Tuesday, September 4, 2018 8 AM EDT Advisory #8A

Center Location: 28.1 N 86.2 W Maximum Sustained Winds: 65 mph Movement: 15 mph WNW

forecast positions Potential Track Area: day 1-3 day 4-5 Surface Wind Field: at current location

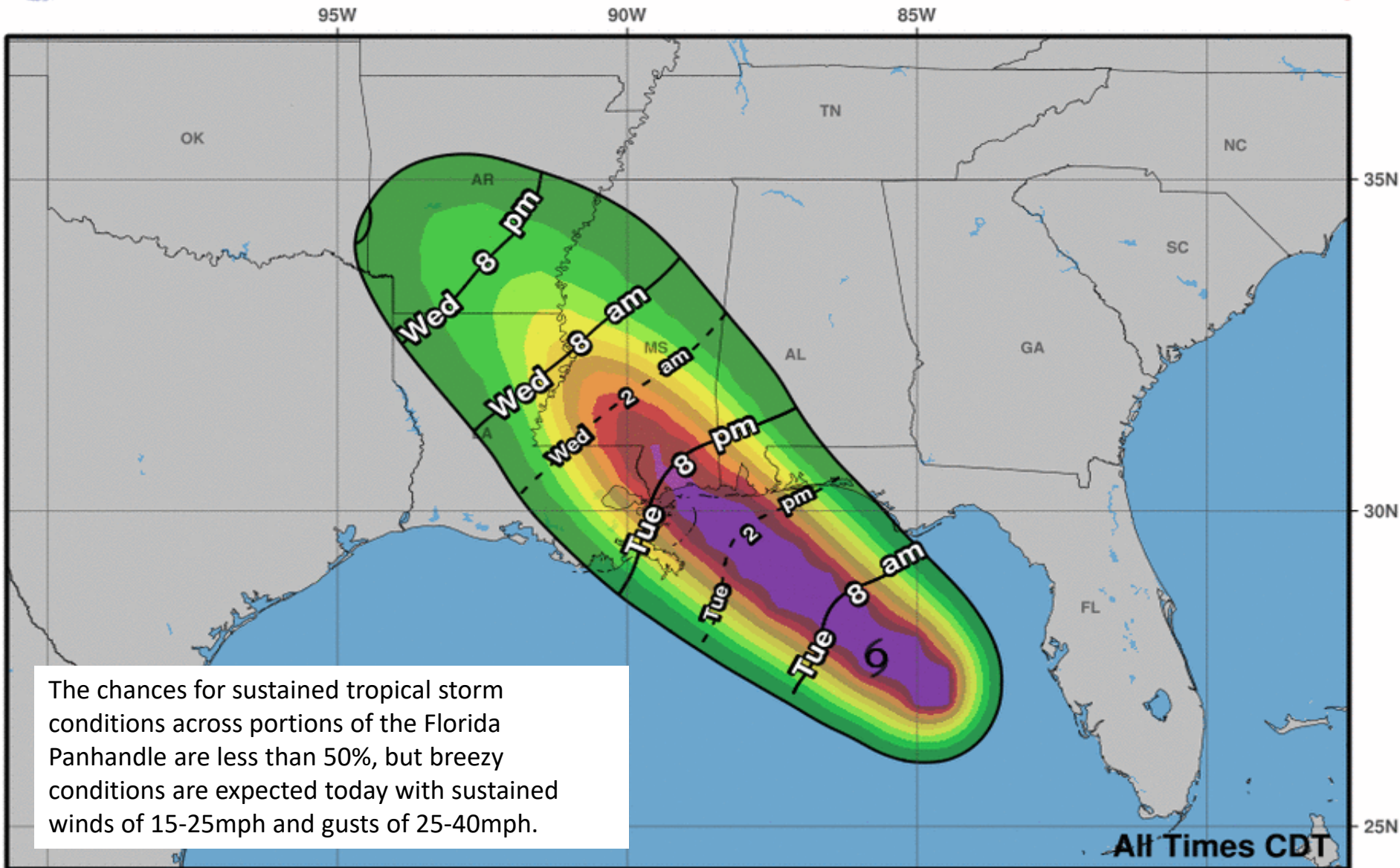
Watches: hurricane tropical storm

Warnings: hurricane tropical storm

Sustained Wind Speeds: tropical storm >= 34kt/39mph strong tropical storm >= 50kt/58mph hurricane >= 64kt/74mph



Most Likely Arrival Time of Tropical-Storm-Force Winds



The chances for sustained tropical storm conditions across portions of the Florida Panhandle are less than 50%, but breezy conditions are expected today with sustained winds of 15-25mph and gusts of 25-40mph.

Tropical Storm Gordon
Tue. Sep. 4, 2018 4 am CDT
Advisory 8

Storm Location & Wind Speed

< 34 kt (39 mph)

34-63 kt (39-73 mph)

≥ 64 kt (74 mph)

5-day chance of receiving sustained 34+ kt (39+ mph) winds

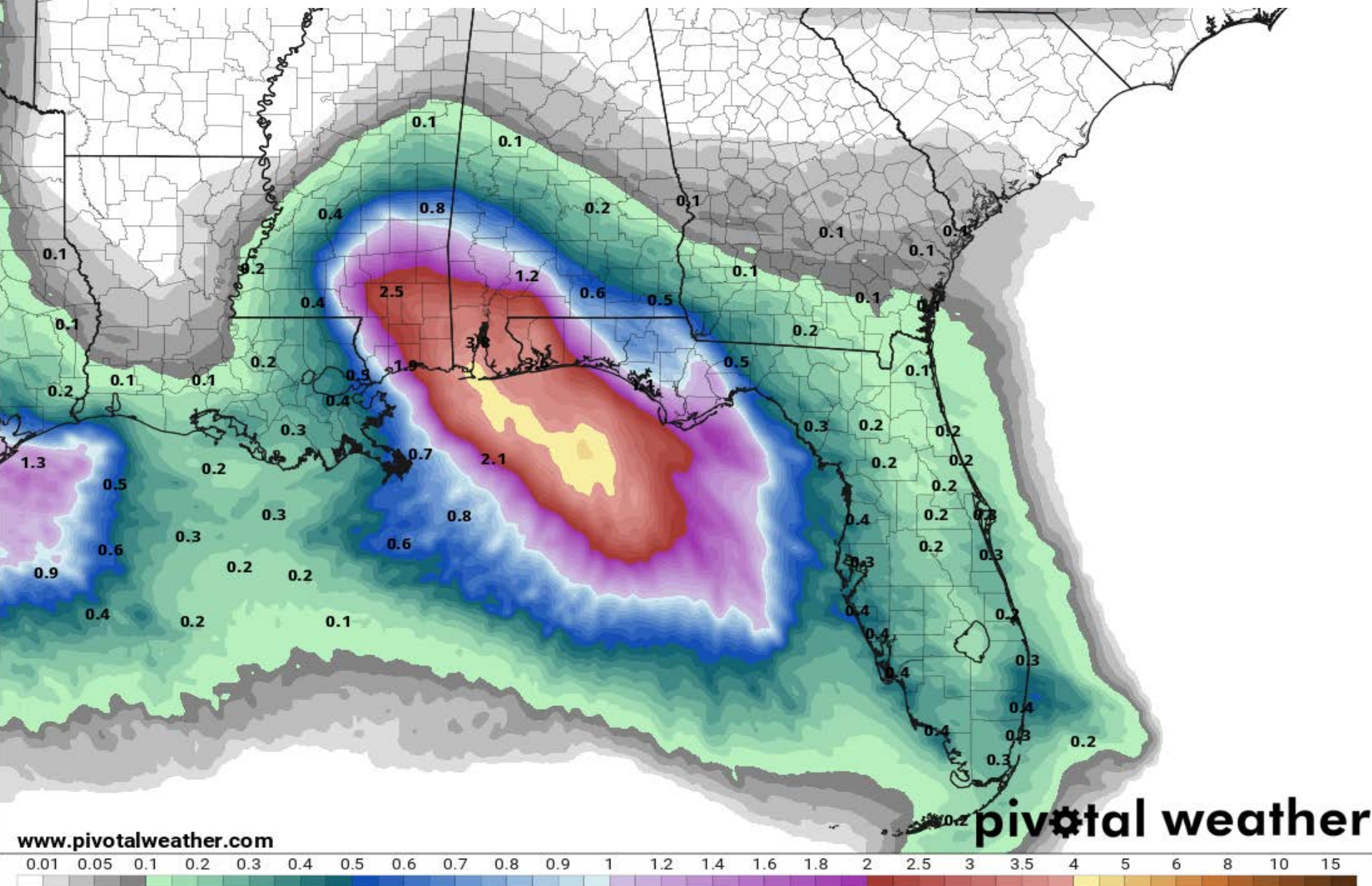
5 10 20 30 40 50 60 70 80 90 100 %

24-Hour Precipitation (in)

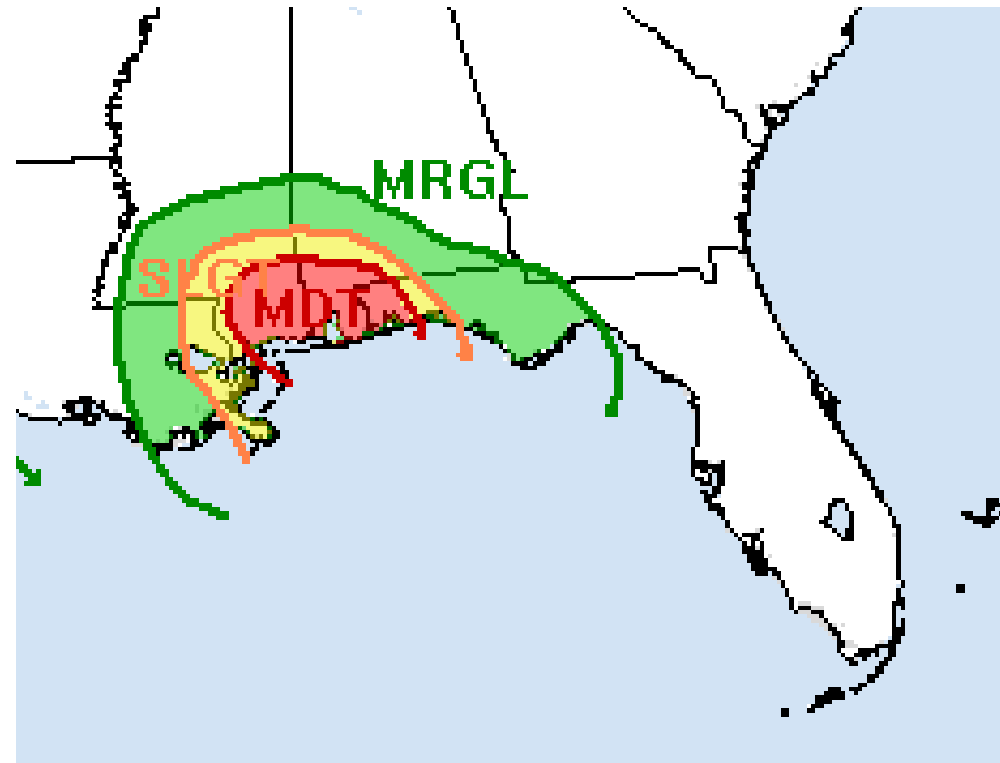
Ending Wednesday, Sep. 5, 2018 at 8 a.m. EDT

Init: Tue 2018-09-04 12z WPC

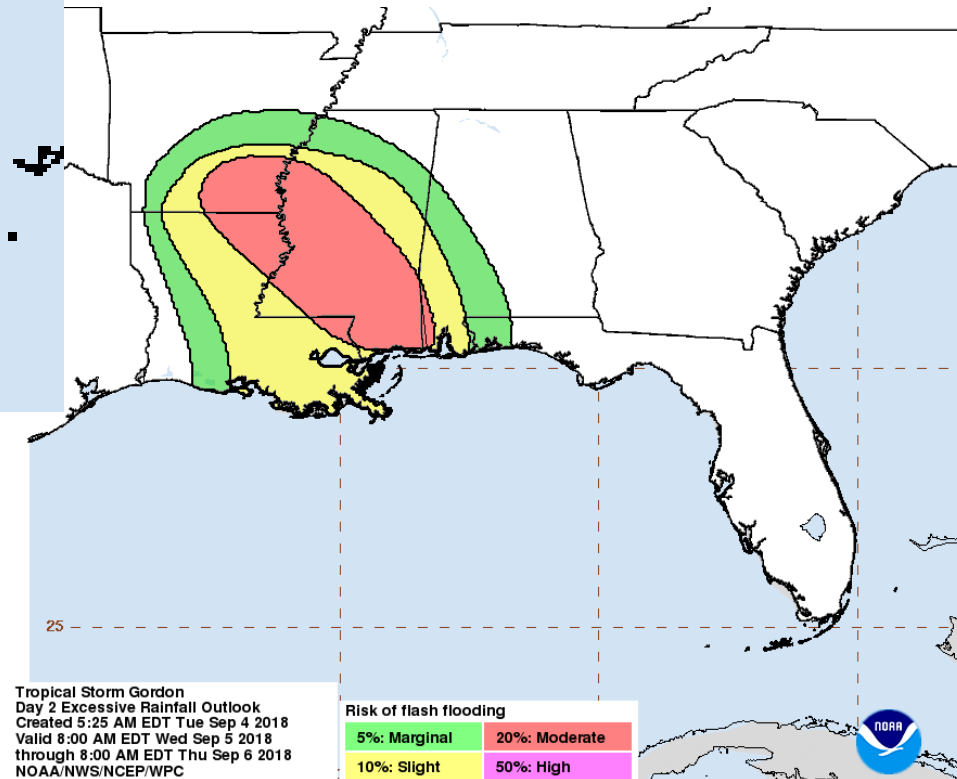
1-3" of rain with isolated cases of as much as 4-6" is possible today and tonight across the Panhandle and Big Bend, mostly today. An additional ½" to 1" is possible tomorrow.



Flash Flood Threat Tuesday and Wednesday



Some cases of Flash Flooding will be possible today in the western Panhandle, especially if heavy rain falls quickly. A lingering threat for isolated flash flooding will be possible early in the day on Wednesday.

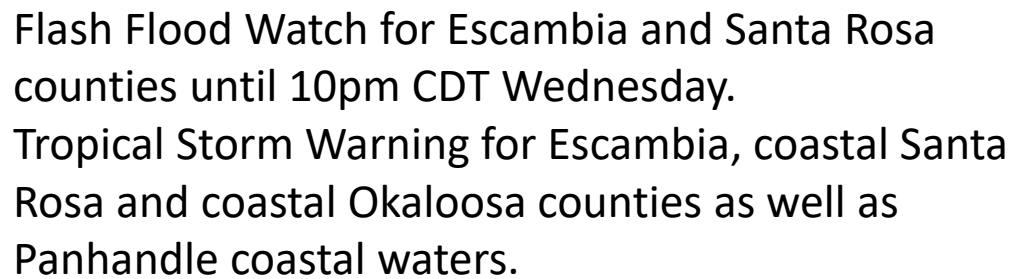


Tropical Storm Gordon
Day 2 Excessive Rainfall Outlook
Created 5:25 AM EDT Tue Sep 4 2018
Valid 8:00 AM EDT Wed Sep 5 2018
through 8:00 AM EDT Thu Sep 6 2018
NOAA/NWS/NCEP/WPC

Risk of flash flooding

5%: Marginal	20%: Moderate
10%: Slight	50%: High

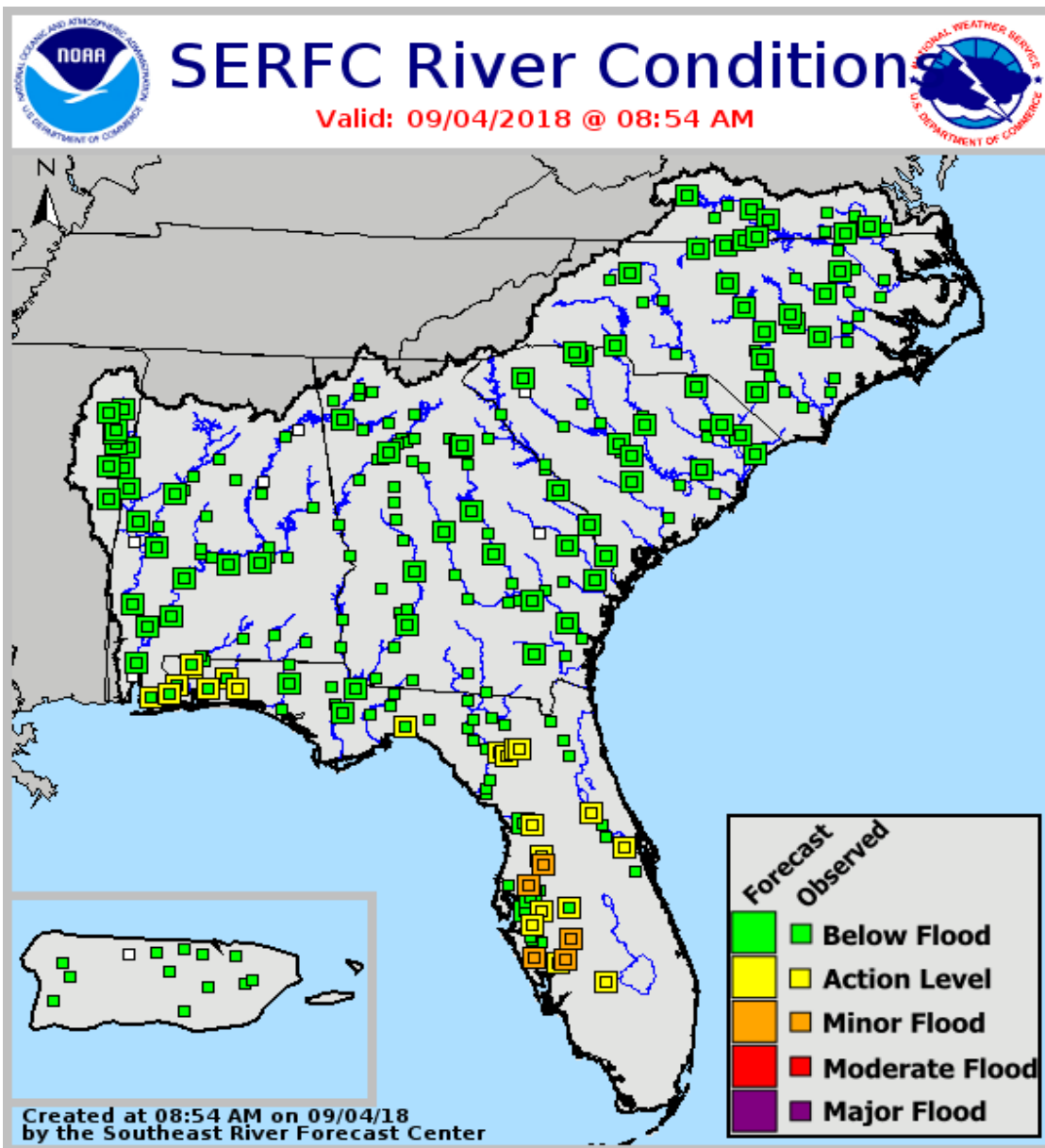




pivotal weather

Convective/Tropical	Flooding	Winter	Non-Precipitation
<div><div></div> Tornado Warning</div> <div><div></div> Tornado Watch</div> <div><div></div> Severe Thunderstorm Warning</div> <div><div></div> Severe Thunderstorm Watch</div> <div><div></div> Hurricane Warning</div> <div><div></div> Hurricane Watch</div> <div><div></div> Tropical Storm Warning</div> <div><div></div> Tropical Storm Watch</div>	<div><div></div> Flash Flood Warning</div> <div><div></div> Flash Flood Watch</div> <div><div></div> Flood Watch</div> <div><div></div> Flood Warning</div> <div><div></div> Coastal Flood Warning</div> <div><div></div> Coastal Flood Watch</div>	<div><div></div> Blizzard Warning</div> <div><div></div> Blizzard Watch</div> <div><div></div> Ice Storm Warning</div> <div><div></div> Winter Storm Warning</div> <div><div></div> Winter Storm Watch</div> <div><div></div> Winter Weather Advisory</div> <div><div></div> Freeze Warning</div> <div><div></div> Freeze Watch</div>	<div><div></div> Red Flag Warning</div> <div><div></div> Excessive Heat Warning</div> <div><div></div> Excessive Heat Watch</div> <div><div></div> Heat Advisory</div> <div><div></div> Dense Fog Advisory</div> <div><div></div> High Wind Warning</div> <div><div></div> High Wind Watch</div> <div><div></div> Wind Advisory</div>

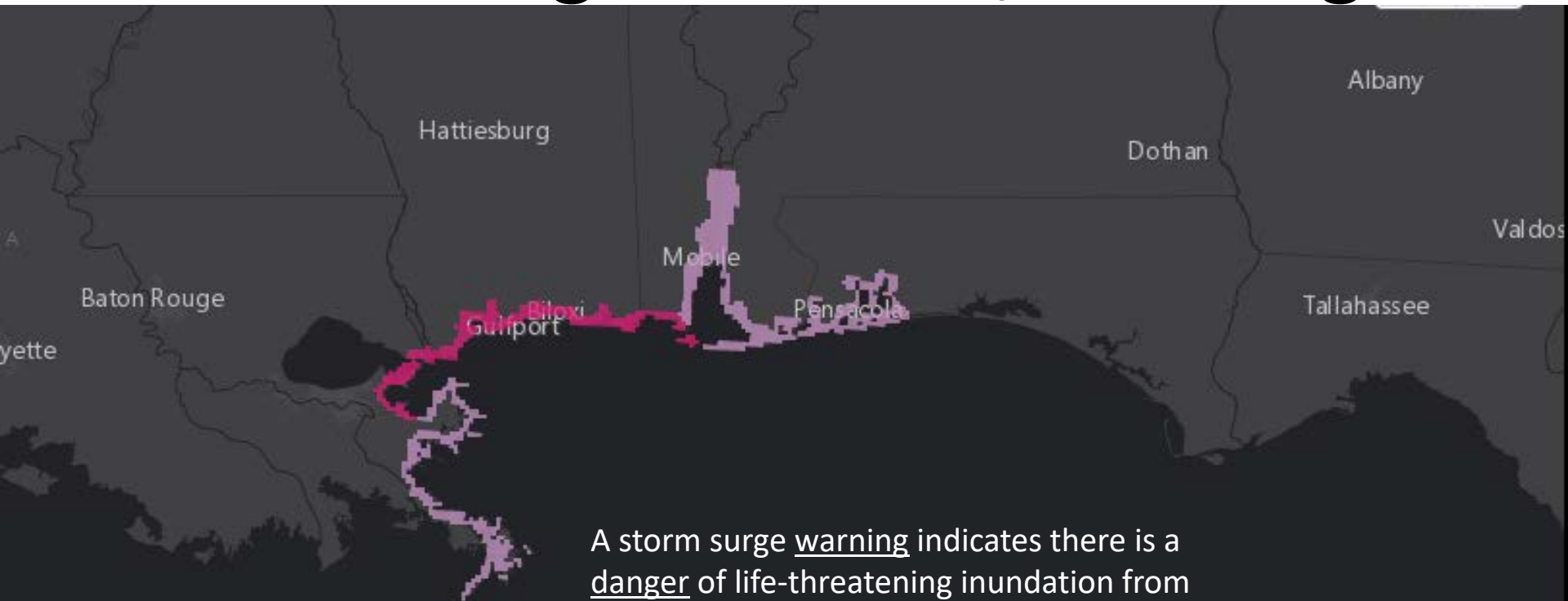
Current and Forecast River Conditions



Several rivers in Central and Southwest Florida remain in minor flood stage, but significant flooding is not expected. Rises are expected on some Panhandle rivers, but flooding is not currently anticipated.

For more specifics on individual river levels, please visit the Southeast River Forecast Center at <https://www.weather.gov/serfc/>

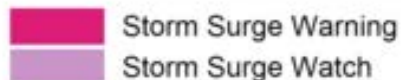
Storm Surge Watches/Warnings



A storm surge warning indicates there is a danger of life-threatening inundation from rising water moving inland from the shoreline somewhere within the specified area, generally within 36 hours. A storm surge watch indicates that life-threatening inundation is possible somewhere within the specified area, generally within 48 hours.



Esri, HERE, Garmin, NGA, USGS, NPS | Esri, HERE, NPS



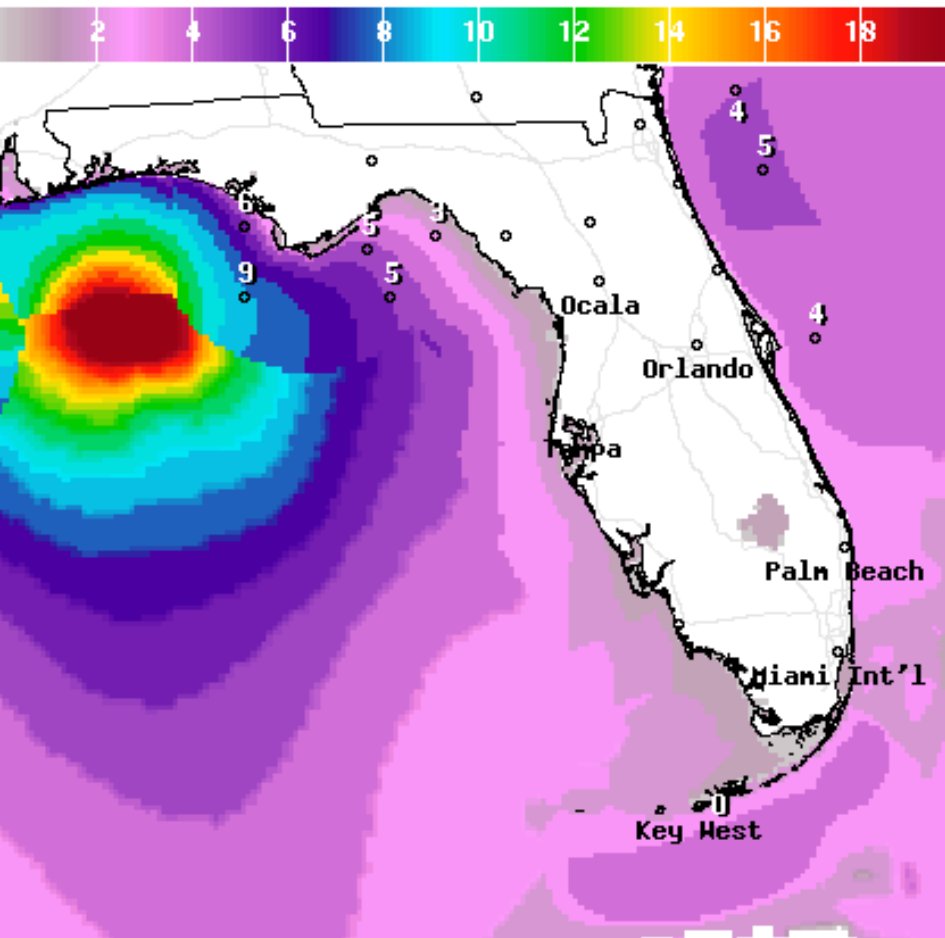
STORM SURGE INUNDATION



ABOVE GROUND LEVEL

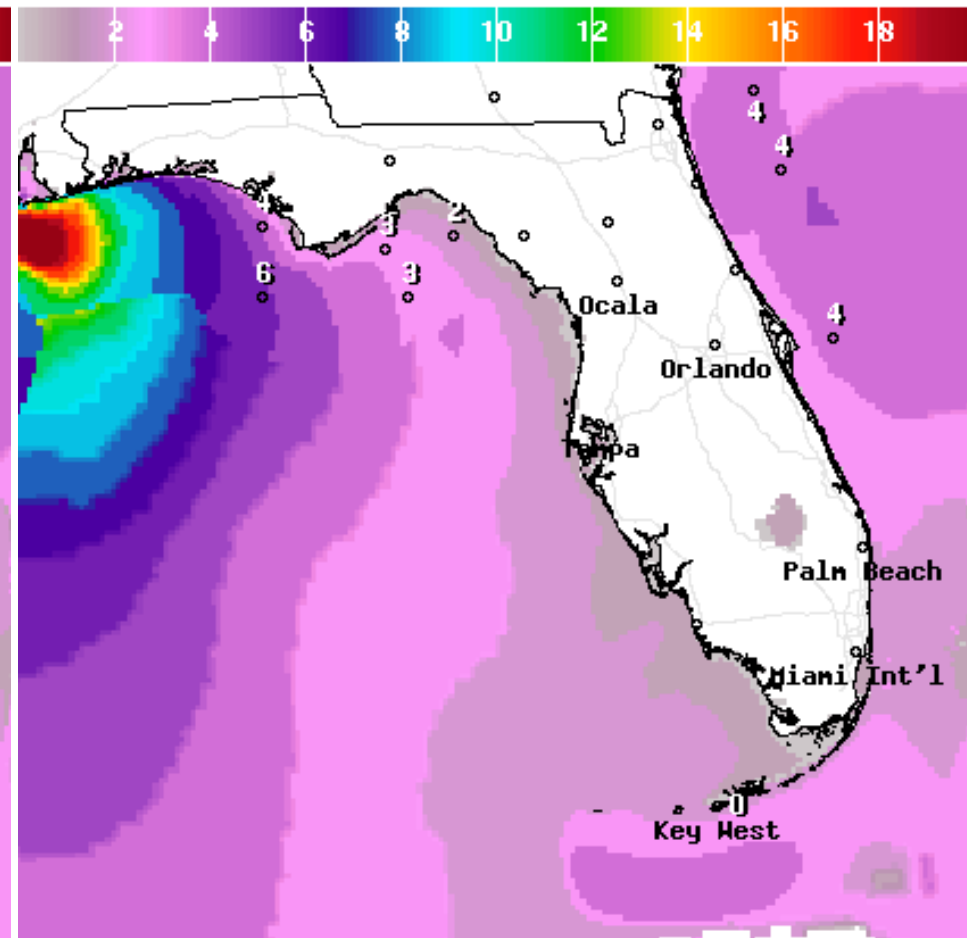
IF PEAK SURGE OCCURS AT HIGH TIDE





Forecast Wave Heights (ft)

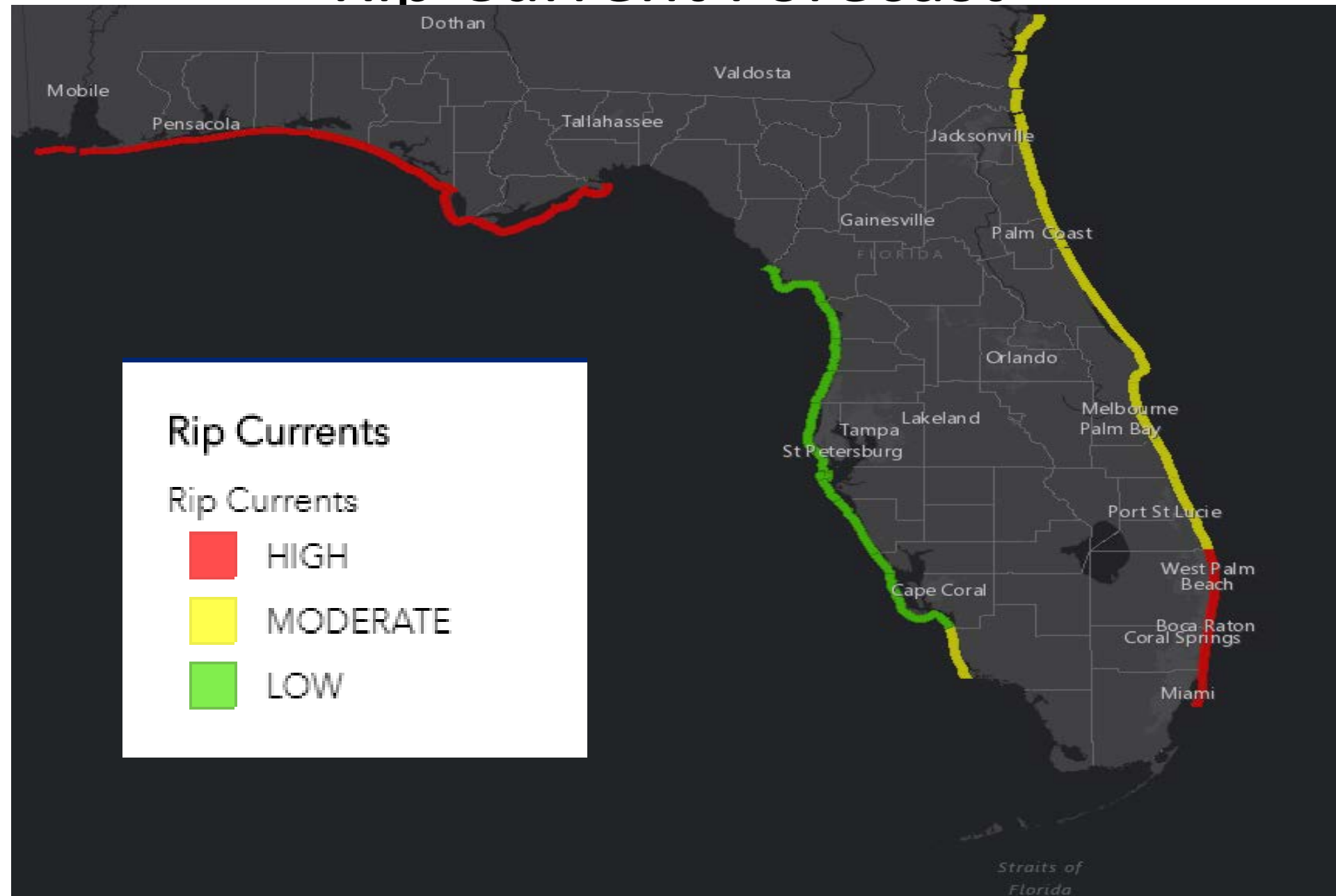
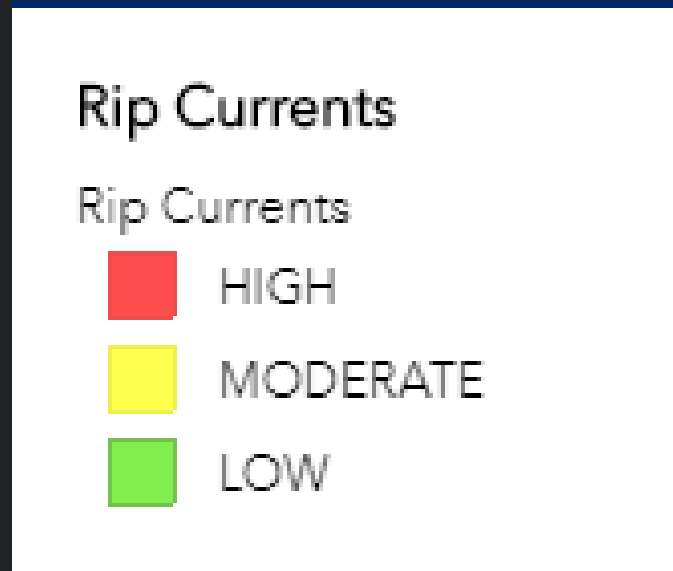


 **National Digital Forecast Database**
12z issuance Graphic created-Sep 04 8:35AM EDT 

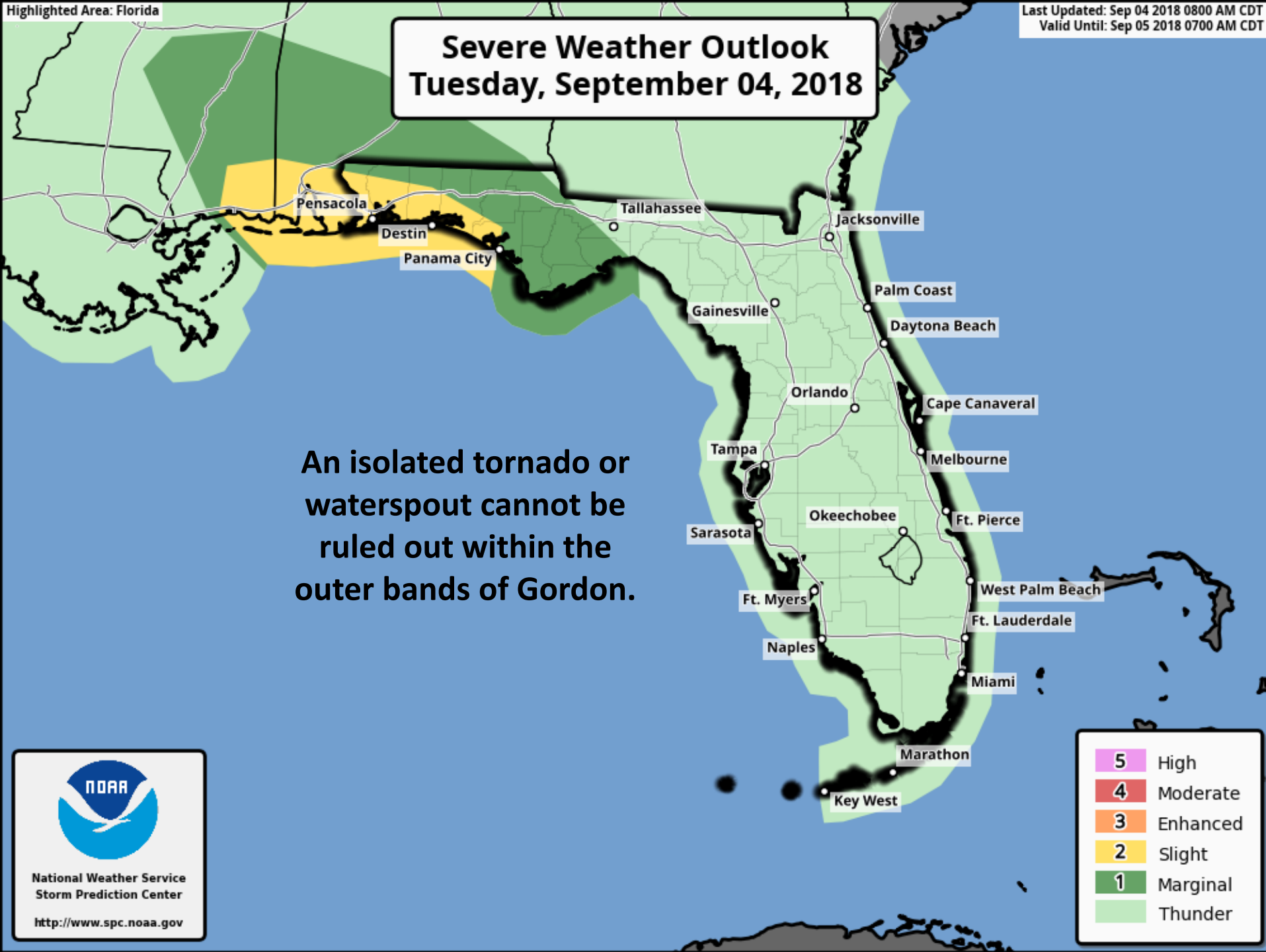


 **National Digital Forecast Database**
11z issuance Graphic created-Sep 04 7:35AM EDT 

Rip Current Forecast



Severe Weather Outlook Tuesday, September 04, 2018



National Weather Service
Storm Prediction Center

<http://www.spc.noaa.gov>

Summary

- Tropical Storm Florence remains in the open waters of the Tropical Atlantic, several hundred miles from land and moving west-northwest around 13mph.
- Maximum sustained winds have increased to 70 mph. Some fluctuations in strength are expected through the next 3-4 days, followed by some strengthening this weekend.
- This system is expected to have no impact on land for at least the next 5-7 days, but bears watching for possible large ocean swells reaching the U.S. East Coast next week and increasing the rip current and/or coastal flood risk.
- At 8am EDT Tuesday, Tropical Storm Gordon was located over the northeastern Gulf of Mexico approximately 160 miles south of Miramar Beach, FL.
- Maximum sustained winds increased overnight to near 65mph and some additional strengthening is expected before making landfall tonight near the Louisiana/Mississippi border.
- Gordon is forecast to be a hurricane when it makes landfall along the north-central Gulf Coast. Rapid weakening is expected after Gordon moves inland.
- Tropical-storm-force winds extend outward up to 80 miles from the center.
- In the far eastern Atlantic, a tropical wave (designated as Invest area 92L) located near the Cabo Verde Islands is producing a large area of disorganized showers and thunderstorms.
- Some slow development of this disturbance is possible during the next couple of days while the system moves slowly westward to west-northwestward across the eastern tropical Atlantic, but a tropical depression is likely to form by this weekend as environmental conditions gradually become conducive for further development.
- The National Hurricane Center is currently predicting a 20% (low) chance of development within the next 2 days, but a 70% (high) chance for development in 3-5 days.

Florida Outlook:

- Locally heavy rainfall will continue to be the main impact to Florida from Tropical Storm Gordon.
- Rainfall totals of 1-3” with isolated higher amounts of 4-6” are possible today across portions of the Florida Panhandle and Big Bend, which may result in some flooding impacts. A Flash Flood Watch is in effect for Escambia and Santa Rosa Counties through Wednesday.
- Many rivers across the state are elevated due to recent rainfall, but significant river flooding is not currently expected.
- Tropical Storm Warnings remain in effect for Escambia, coastal Santa Rosa and coastal Okaloosa counties for expected winds in the 25-50mph range, primarily within heavy rain bands. This may result in limited damage, mainly to unsecured lightweight objects, fences and tree limbs which may result in minor power and communications outages.
- Storm Surge Watches remain in effect for coastal Escambia and Santa Rosa counties for the possibility of as much as 2-4’ of storm surge. Peak surge in the Panhandle may occur this evening and overnight, between the low and high tide cycle.
- High waves will produce a high risk of rip currents at all Florida Panhandle beaches through the next few days.
- An isolated tornado or waterspout across the Florida Panhandle is possible today, and Tornado Watches could be issued this afternoon.

Another briefing packet will be sent out Tuesday evening. For the latest information on the tropics, please visit the National Hurricane Center website at www.hurricanes.gov.



TROPICAL UPDATE

Created by:

Amy Godsey, Chief State Meteorologist

Amy.Godsey@em.myflorida.com

State Meteorological Support Unit
Florida Division of Emergency
Management

Users wishing to subscribe (approval pending) to this distribution list, register at https://public.govdelivery.com/accounts/FLDEM/subscriber/new?topic_id=SERT_Met_Tropics.

Other reports available for subscription are available at

<https://public.govdelivery.com/accounts/FLDEM/subscriber/new?preferences=true>