



# **TROPICAL UPDATE**

**10 AM EDT**

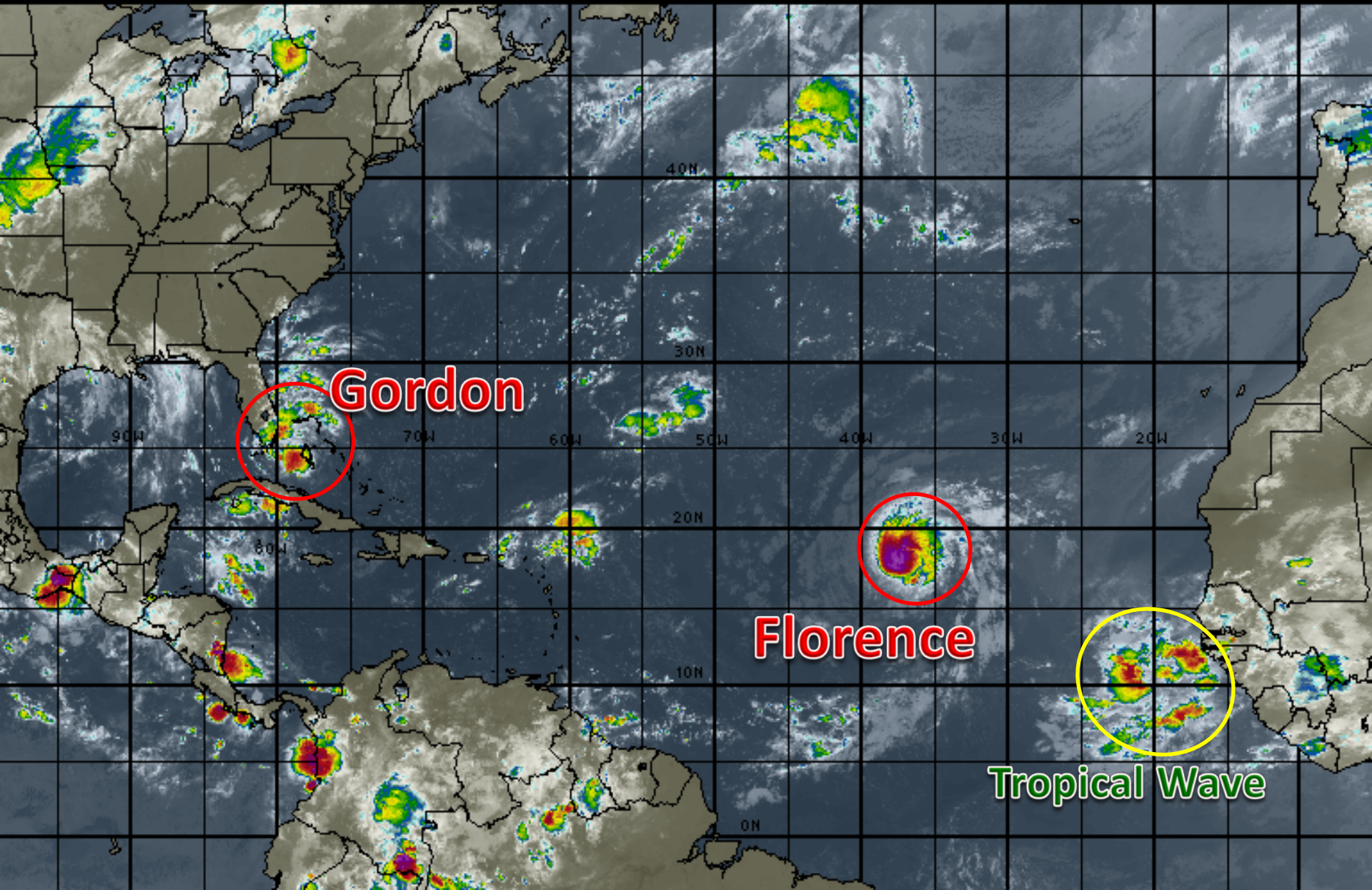
**Monday, September 3, 2018**

**Tropical Storm Florence, Tropical Storm  
Gordon & African Tropical Wave (30%)**

**This update is intended for government and emergency response officials, and is provided for informational and situational awareness purposes only. Forecast conditions are subject to change based on a variety of environmental factors. For additional information, or for any life safety concerns with an active weather event please contact your County Emergency Management or Public Safety Office, local National Weather Service forecast office or visit the National Hurricane Center website at [www.nhc.noaa.gov](http://www.nhc.noaa.gov).**

# Atlantic Basin Satellite Image

09:00 03-SEP-2018 GMT Copyright © 1998-2018 WSI Corporation <http://www.wsi.com>





# Five-Day Graphical Tropical Weather Outlook

National Hurricane Center Miami, Florida



www.hurricanes.gov

All Disturbances

The National Hurricane Center is issuing advisories on Tropical Storm Florence, located over the eastern Atlantic Ocean and newly classified Tropical Storm Gordon, located over South Florida.

A tropical wave located more than 400 miles southeast of the Cabo Verde Islands is producing a large area of disorganized showers and thunderstorms. Some slow development of this disturbance is possible during the next several days while the system moves westward to west-northwestward across the eastern tropical Atlantic.

\* Formation chance through 48 hours...low...near 0 percent.

\* Formation chance through 5 days...low...30 percent.

GORDON

FLORENCE

8:00 am EDT  
Mon Sep 3 2018

100W 90W 80W 70W 60W 50W 40W 30W 20W

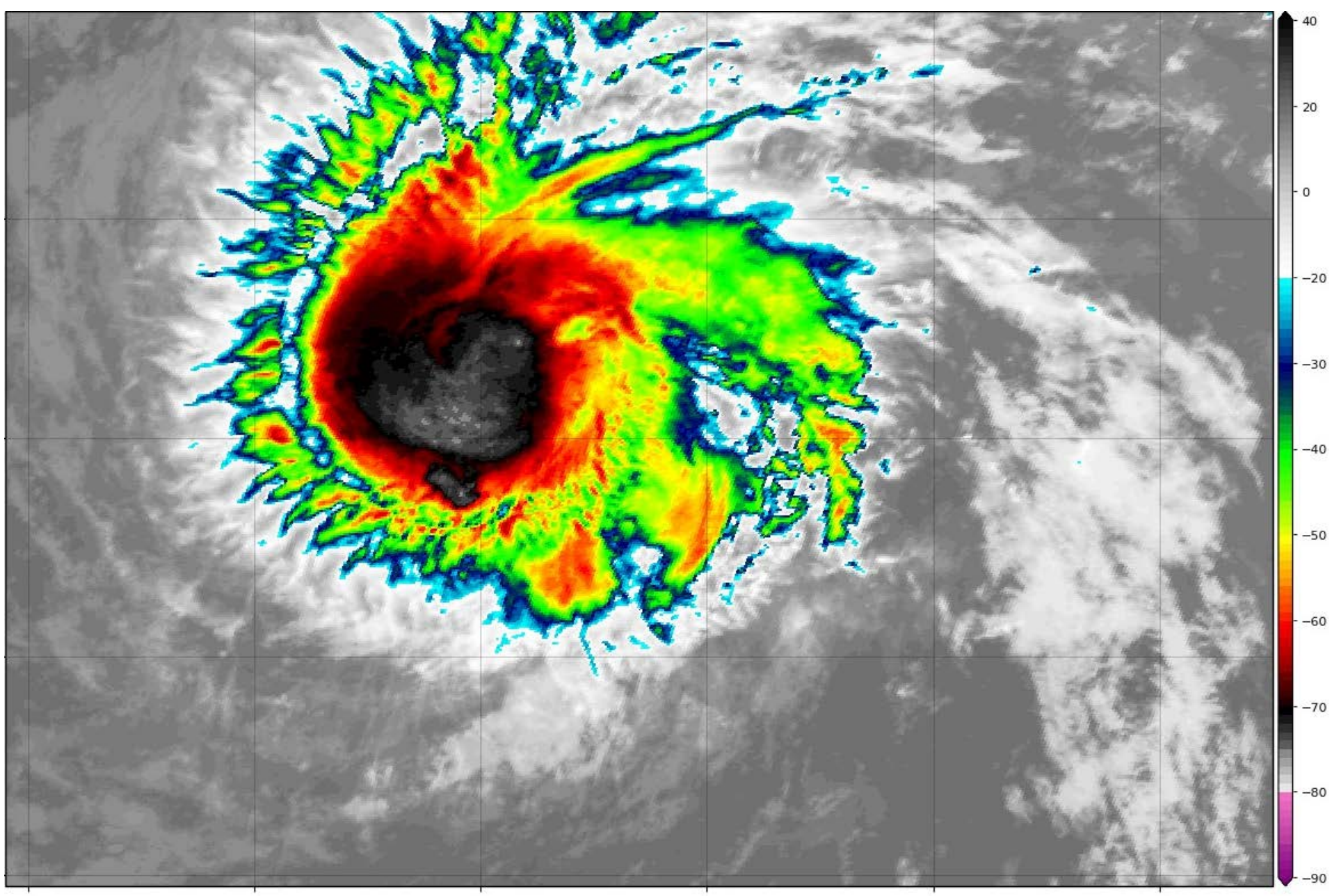
Current Disturbances and Five-Day Cyclone Formation Chance: X < 40% X 40-60% X > 60%

Tropical or Sub-Tropical Cyclone: ○ Depression ○ Storm ○ Hurricane

⊗ Post-Tropical Cyclone or Remnants

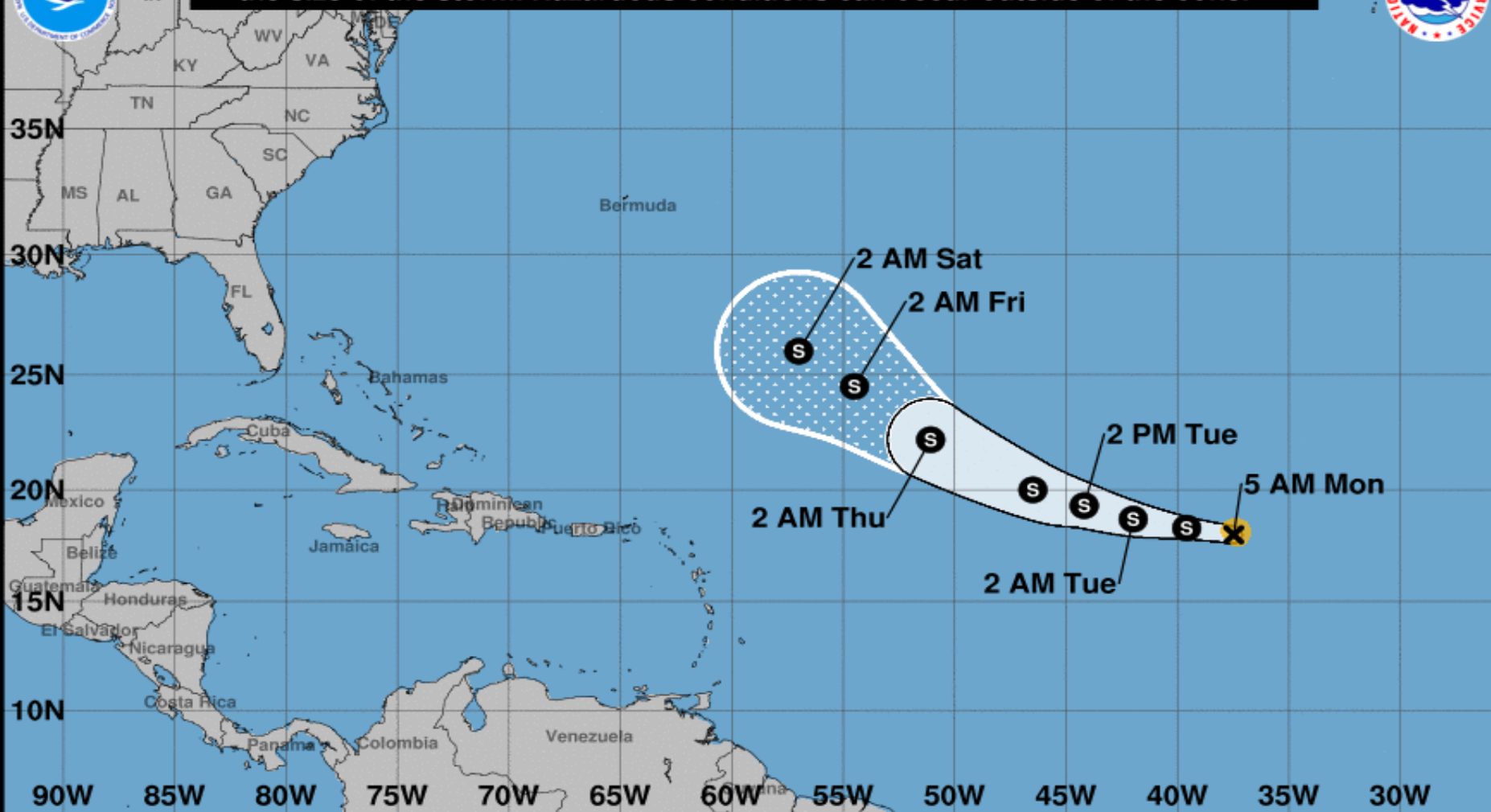


# Tropical Storm Florence Satellite Image





**Note: The cone contains the probable path of the storm center but does not show the size of the storm. Hazardous conditions can occur outside of the cone.**



### Tropical Storm Florence

Monday September 03, 2018

5 AM AST Advisory 16

NWS National Hurricane Center

### Current information: X

Center location 18.0 N 37.5 W

Maximum sustained wind 60 mph

Movement WNW at 16 mph

### Forecast positions:

● Tropical Cyclone ○ Post/Potential TC

Sustained winds: D < 39 mph

S 39-73 mph H 74-110 mph M > 110 mph

### Potential track area:

Day 1-3 Day 4-5

### Watches:

Hurricane Trop Stm

### Warnings:

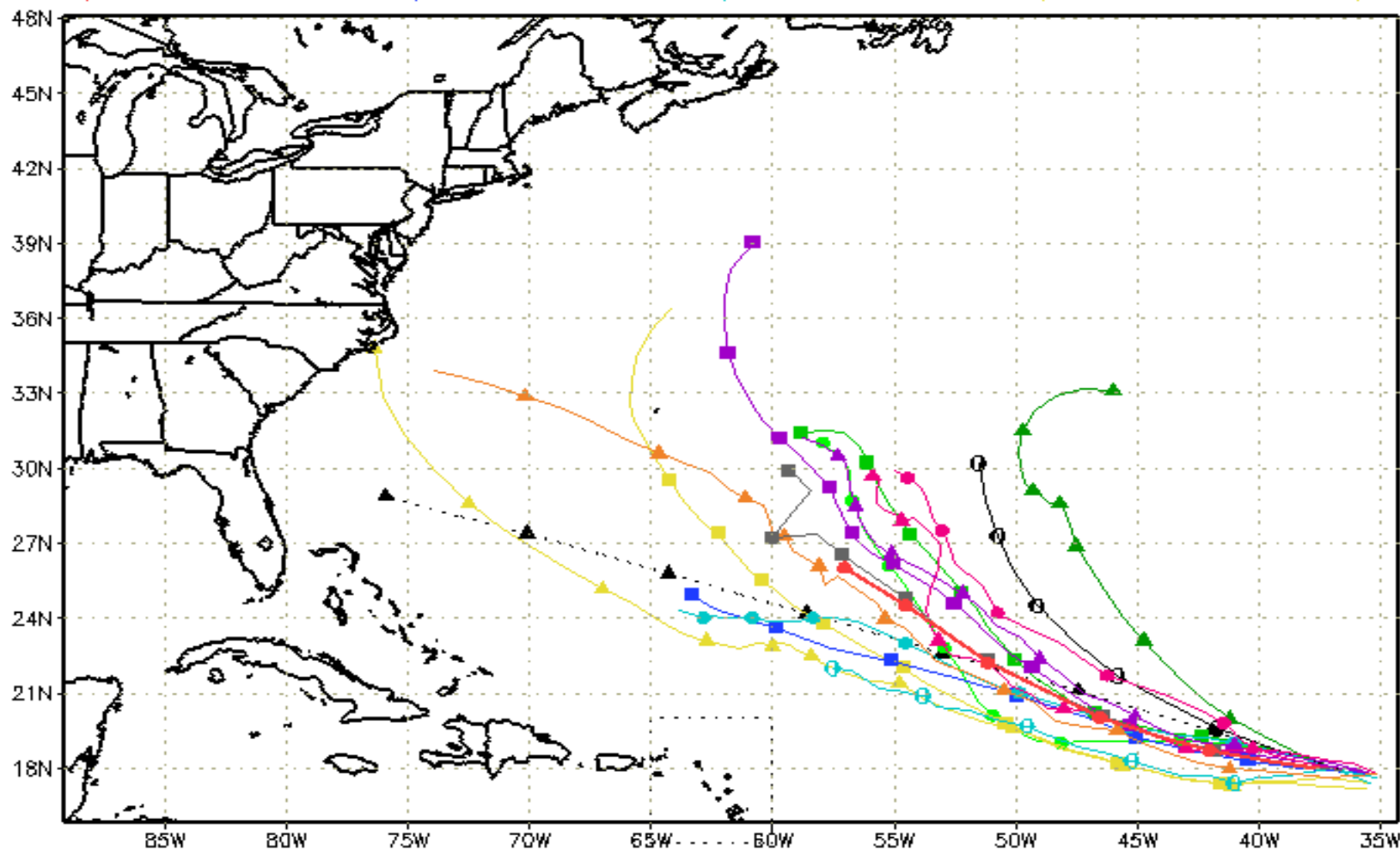
Hurricane Trop Stm

### Current wind extent:

Hurricane Trop Stm

# Track Models (Florence)

---▲--- XTRP 03/0600Z	▲ TABD 03/0600Z	▲ HMON 03/0000Z	▲ AVNO 03/0000Z	▲ ECMF 03/0000Z
---●--- CLP5 03/0600Z	■ TABM 03/0600Z	● HWRF 03/0600Z	■ AEMN 03/0000Z	■ EEMN 03/0000Z
---■--- TVCN 03/0600Z	● TABS 03/0600Z	● NVGM 03/0000Z	--- APxx 03/0000Z	--- EExx 03/0000Z
---●--- NHC 03/0900Z	■ UKM 03/0000Z	● COTC 03/0000Z	▲ CMC 03/0000Z	■ GEMN 03/0000Z



storm\_06

[sfwmd.gov](http://sfwmd.gov)

weather@sfwmd.gov  
03-Sep 08:21EDT

NHC Advisories and County Emergency Management Statements supersede this product.  
This graphic should complement, not replace, NHC discussions.  
If anything on this graphic causes confusion, ignore the entire product.  
For full info, see <http://my.sfwmd.gov/sfwmd/common/images/weather/plots.html>



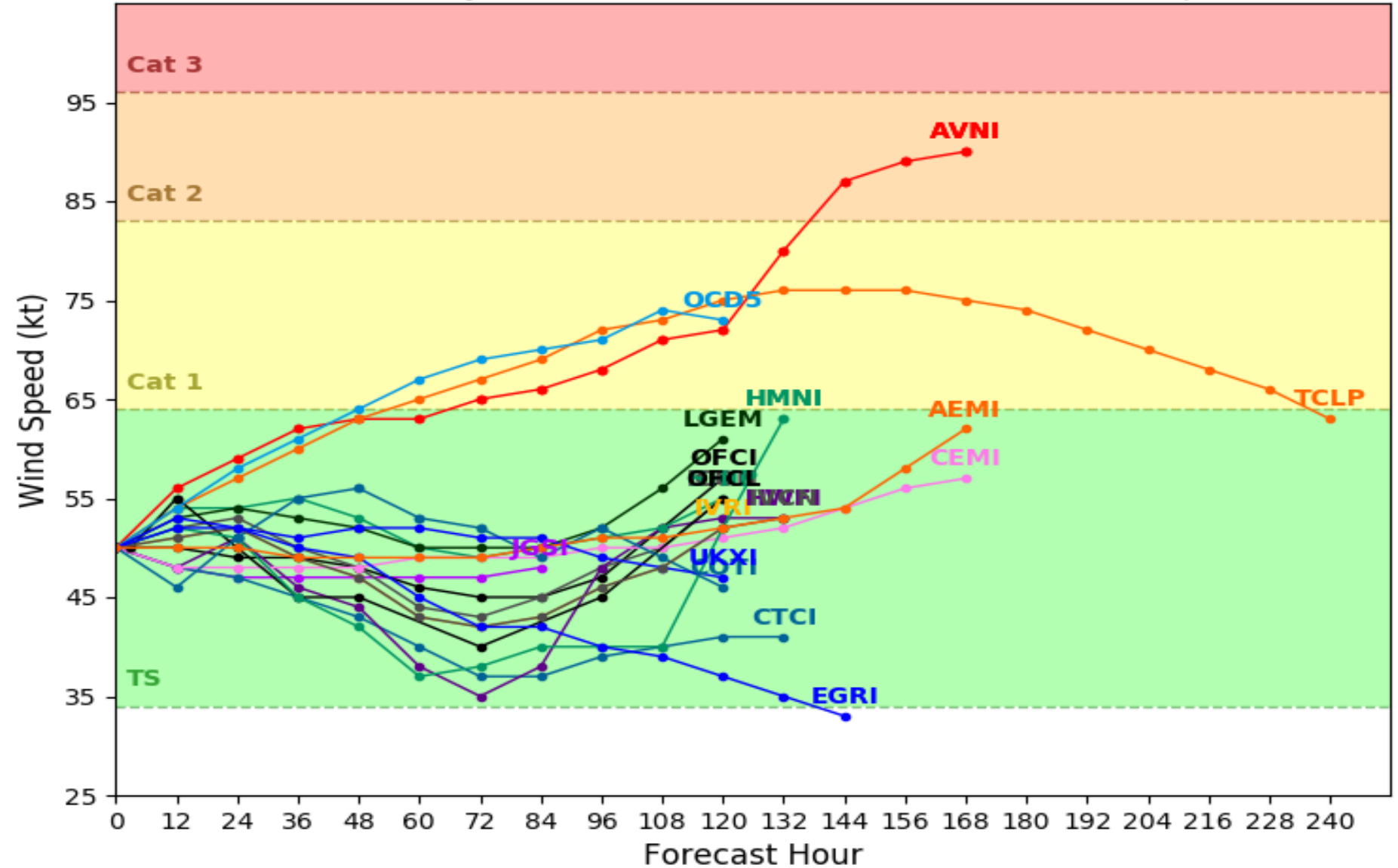


# Intensity Models (Florence)

## Tropical Storm FLORENCE Model Intensity Guidance

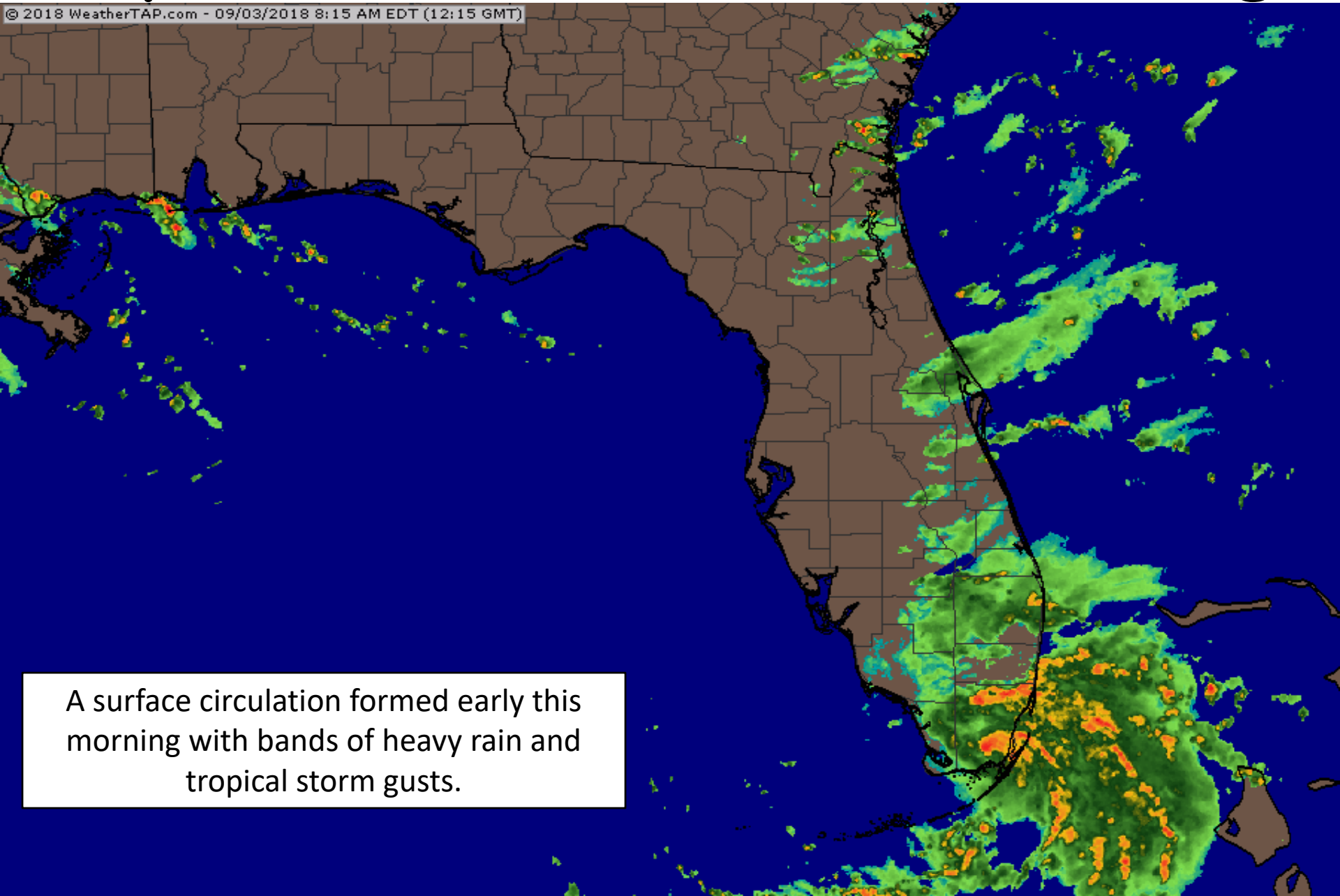
**Initialized at 06z Sep 03 2018**

Levi Cowan - [tropicaltidbits.com](http://tropicaltidbits.com)



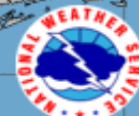
# Tropical Storm Gordon Radar Image

© 2018 WeatherTAP.com - 09/03/2018 8:15 AM EDT (12:15 GMT)

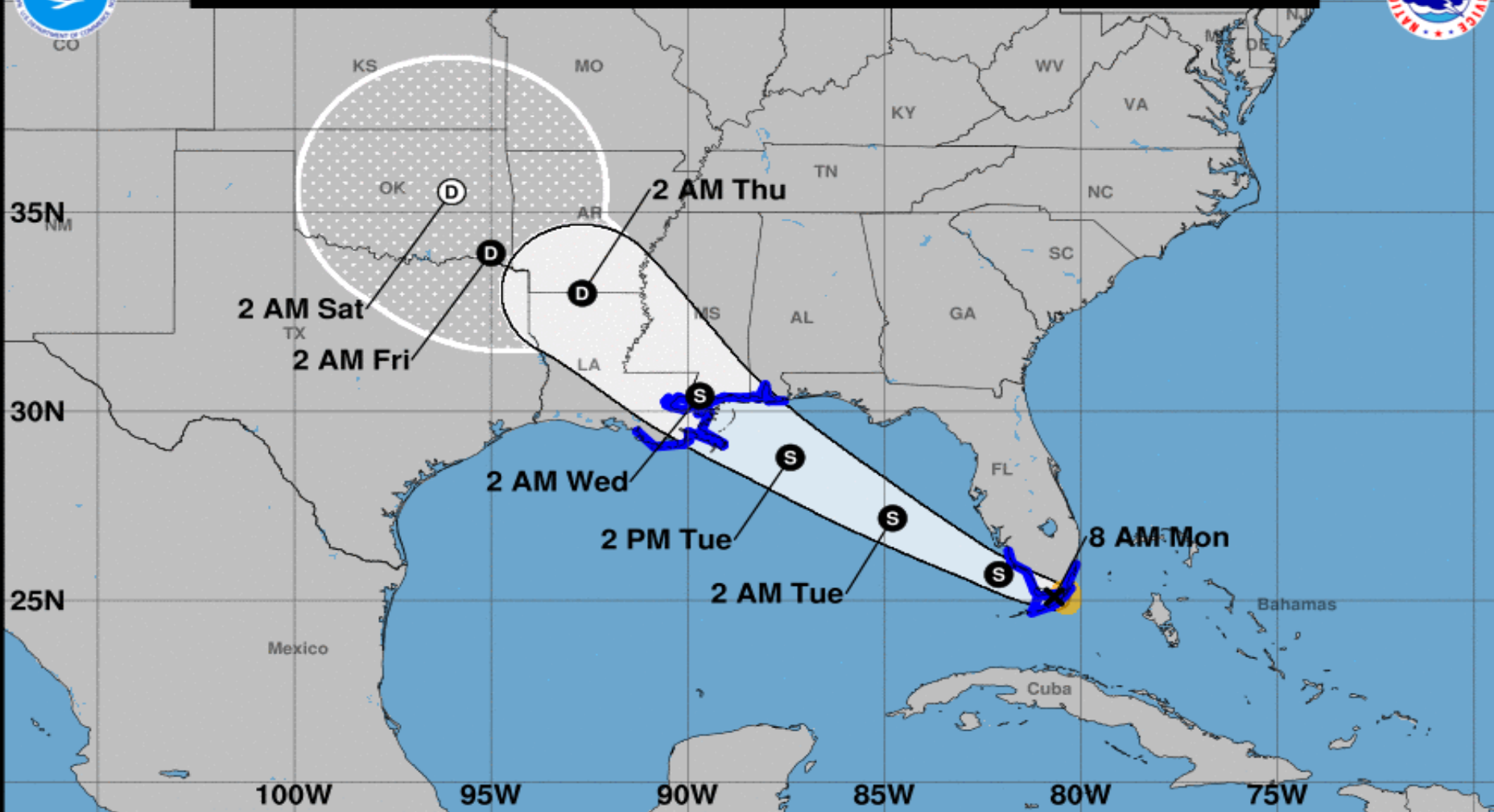


A surface circulation formed early this morning with bands of heavy rain and tropical storm gusts.





**Note: The cone contains the probable path of the storm center but does not show the size of the storm. Hazardous conditions can occur outside of the cone.**



### Tropical Storm Gordon

Monday September 03, 2018

8 AM EDT Advisory 4

NWS National Hurricane Center

### Current information: x

Center location 25.1 N 80.7 W

Maximum sustained wind 45 mph

Movement WNW at 17 mph

### Forecast positions:

● Tropical Cyclone ○ Post/Potential TC

Sustained winds: D < 39 mph

S 39-73 mph H 74-110 mph M > 110 mph

### Potential track area:

Day 1-3 Day 4-5

### Watches:

Hurricane Trop Stm

### Warnings:

Hurricane Trop Stm

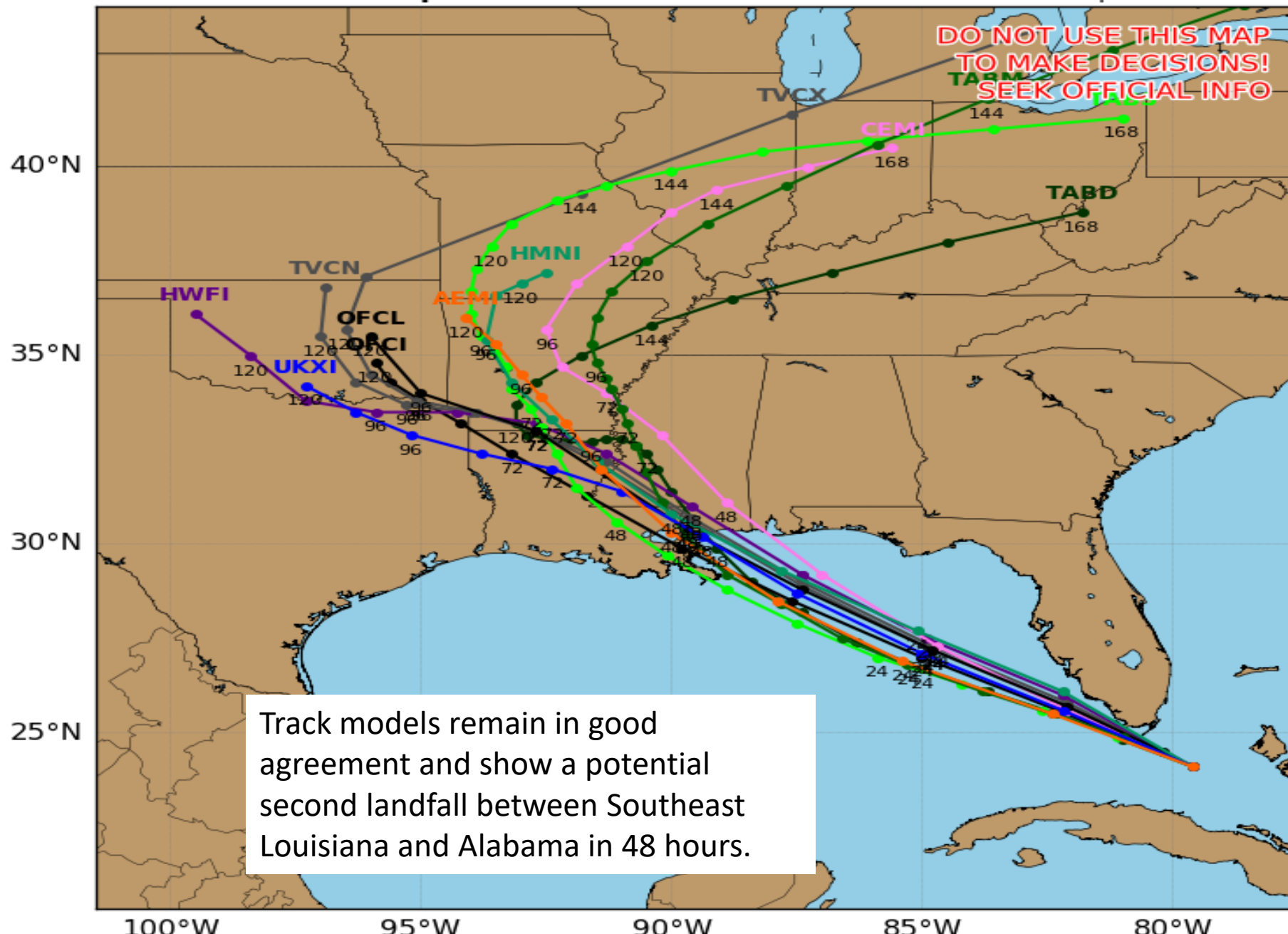
### Current wind extent:

Hurricane Trop Stm

# Potential Tropical Cyclone SEVEN Model Track Guidance

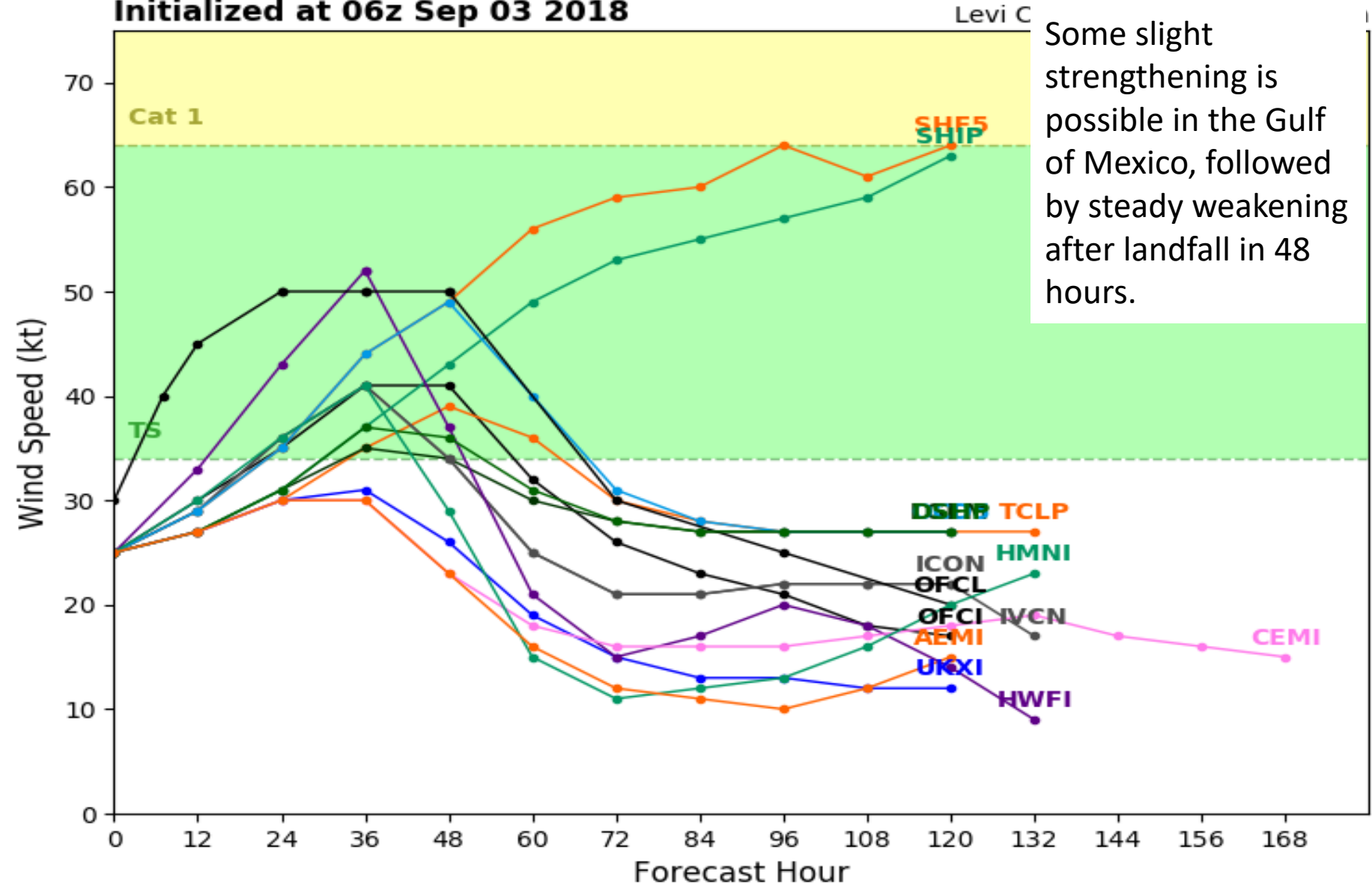
Initialized at 06z Sep 03 2018

Levi Cowan - tropicaltidbits.com



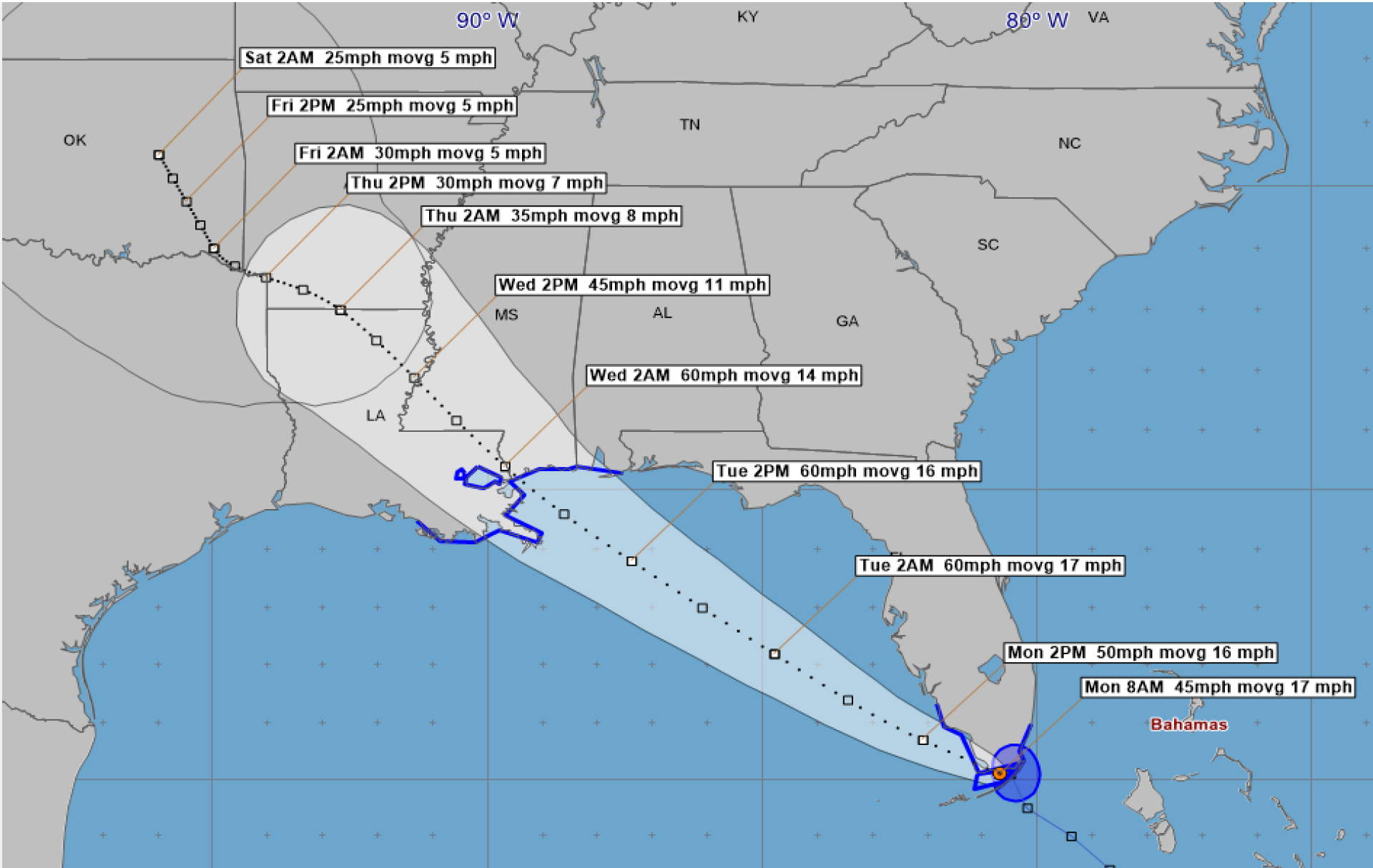
# Intensity Models (Gordon)

# Potential Tropical Cyclone SEVEN Model Intensity Guidance



Some slight strengthening is possible in the Gulf of Mexico, followed by steady weakening after landfall in 48 hours.





# Tropical Storm Gordon - Monday, September 3, 2018 8 AM EDT Advisory #4

Center Location: 25.1 N 80.7 W Maximum Sustained Winds: 45 mph Movement: 17 mph WNW

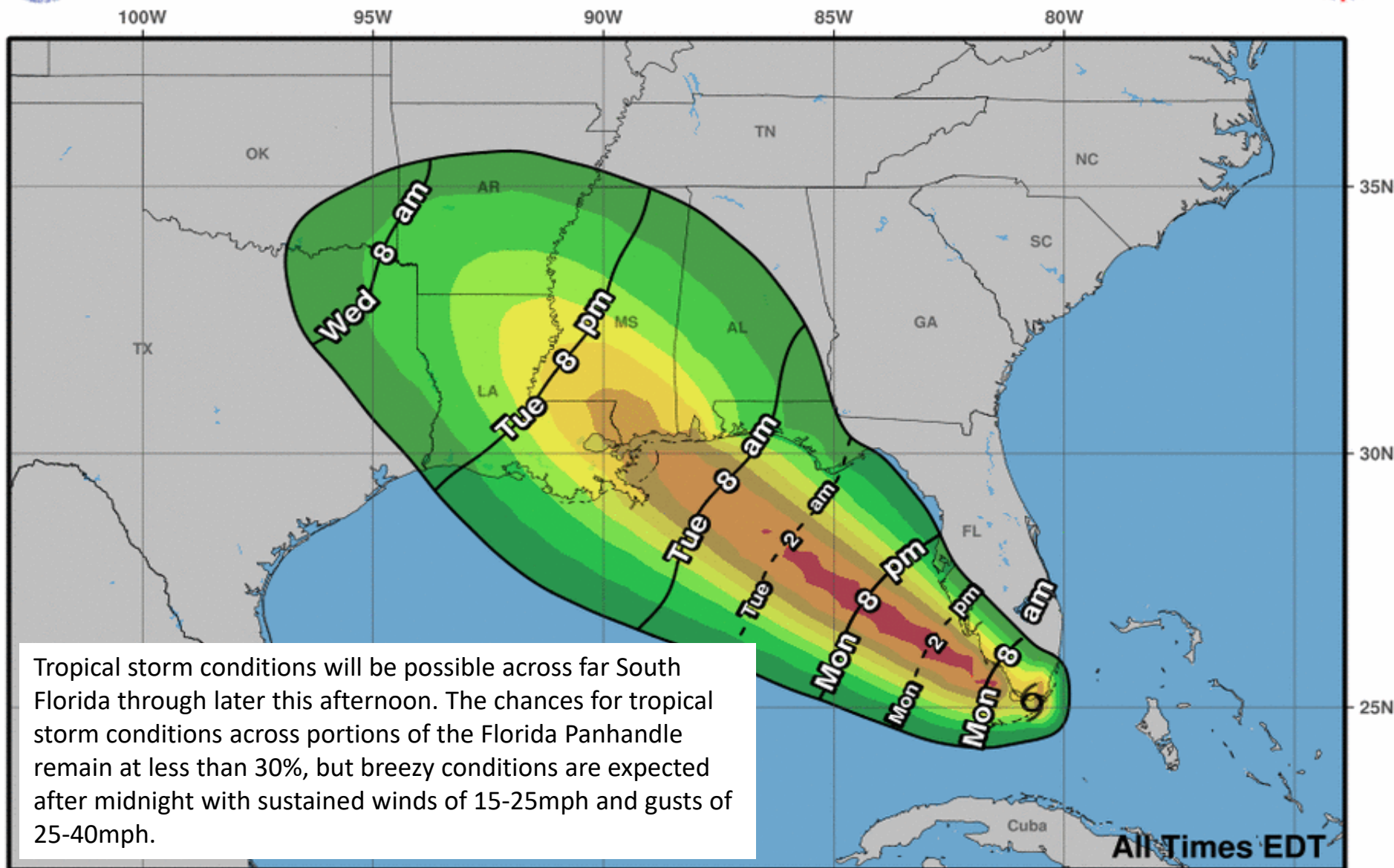
forecast positions Potential Track Area: day 1-3 day 4-5 Surface Wind Field: at current location

Watches: hurricane tropical storm Warnings: hurricane tropical storm

Sustained Wind Speeds: tropical storm >= 34kt/39mph strong tropical storm >= 50kt/58mph hurricane >= 64kt/74mph



# Earliest Reasonable Arrival Time of Tropical-Storm-Force Winds

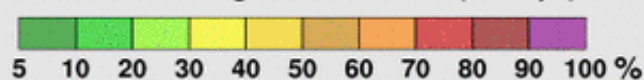


**Tropical Storm Gordon**  
**Mon. Sep. 3, 2018 8 am EDT**  
**Advisory 4**

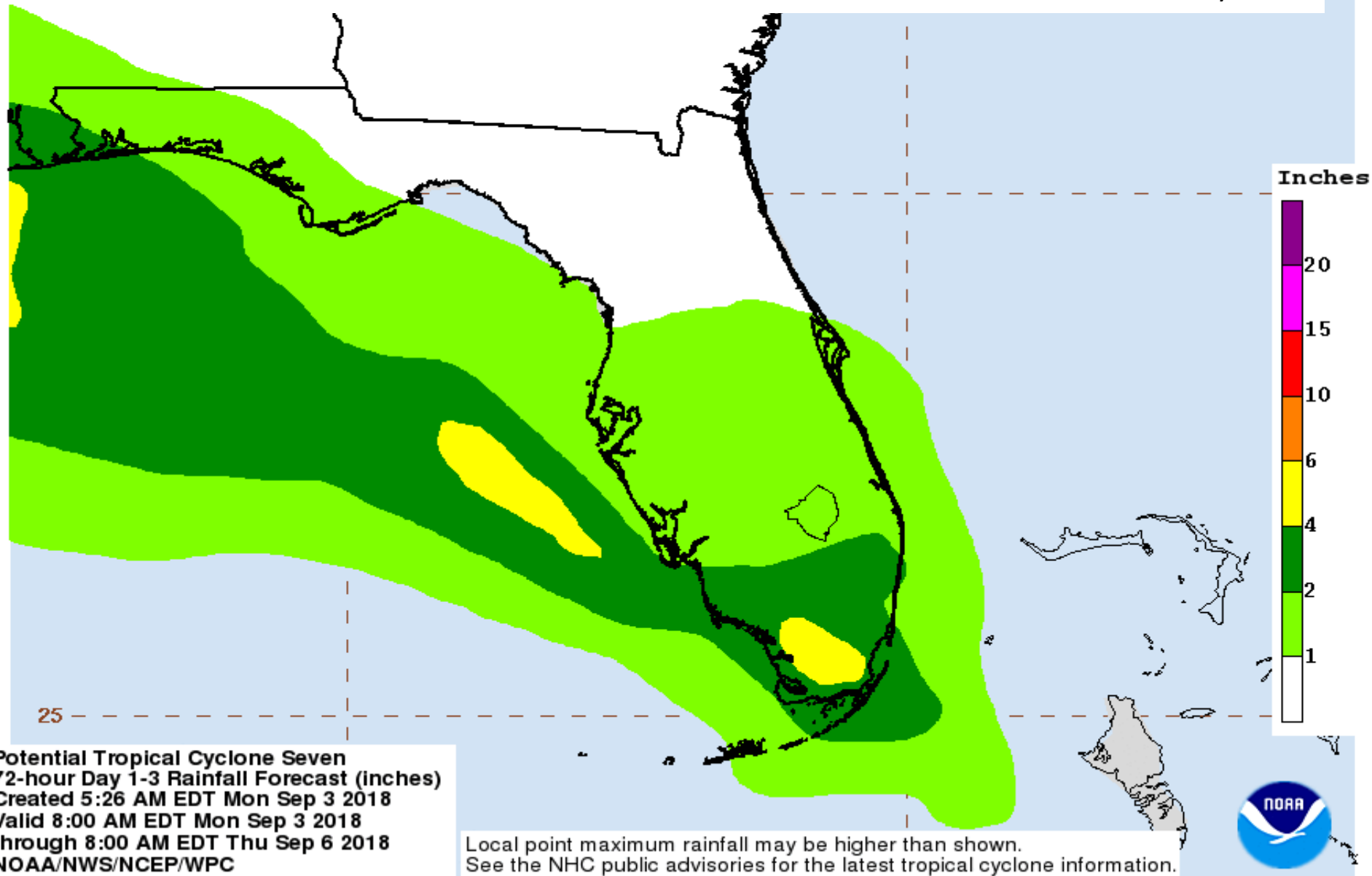
Storm Location & Wind Speed

- < 34 kt (39 mph)
- 34-63 kt (39-73 mph)
- ≥ 64 kt (74 mph)

5-day chance of receiving sustained 34+ kt (39+ mph) winds

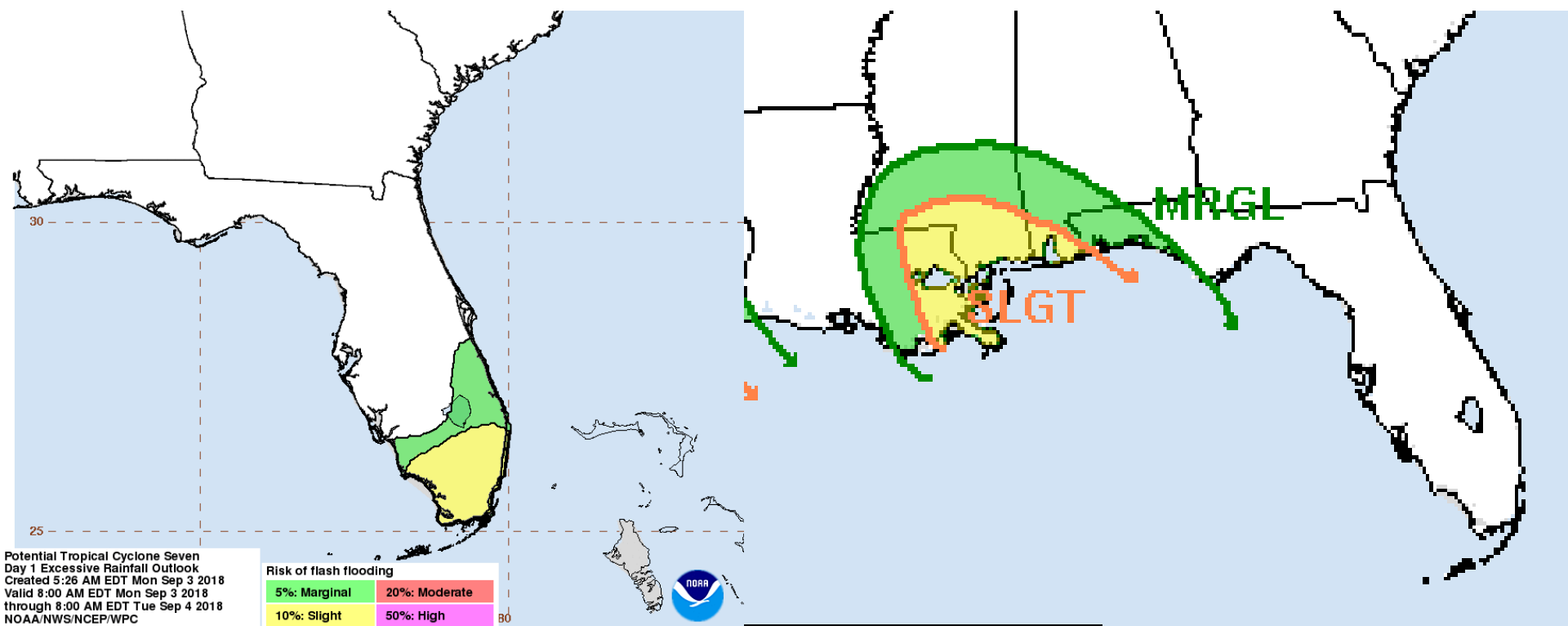


2-4" of rain with isolated cases of as much as 6-8" is possible today across South Florida. This rain will spread towards the central Gulf Coast tomorrow where 1-3" of rain is expected across most of the Florida Panhandle. North Florida areas are now expected to receive less than 1" of rain over the next 48 hours and Central Florida areas should receive less than 2" over the next 2-3 days.

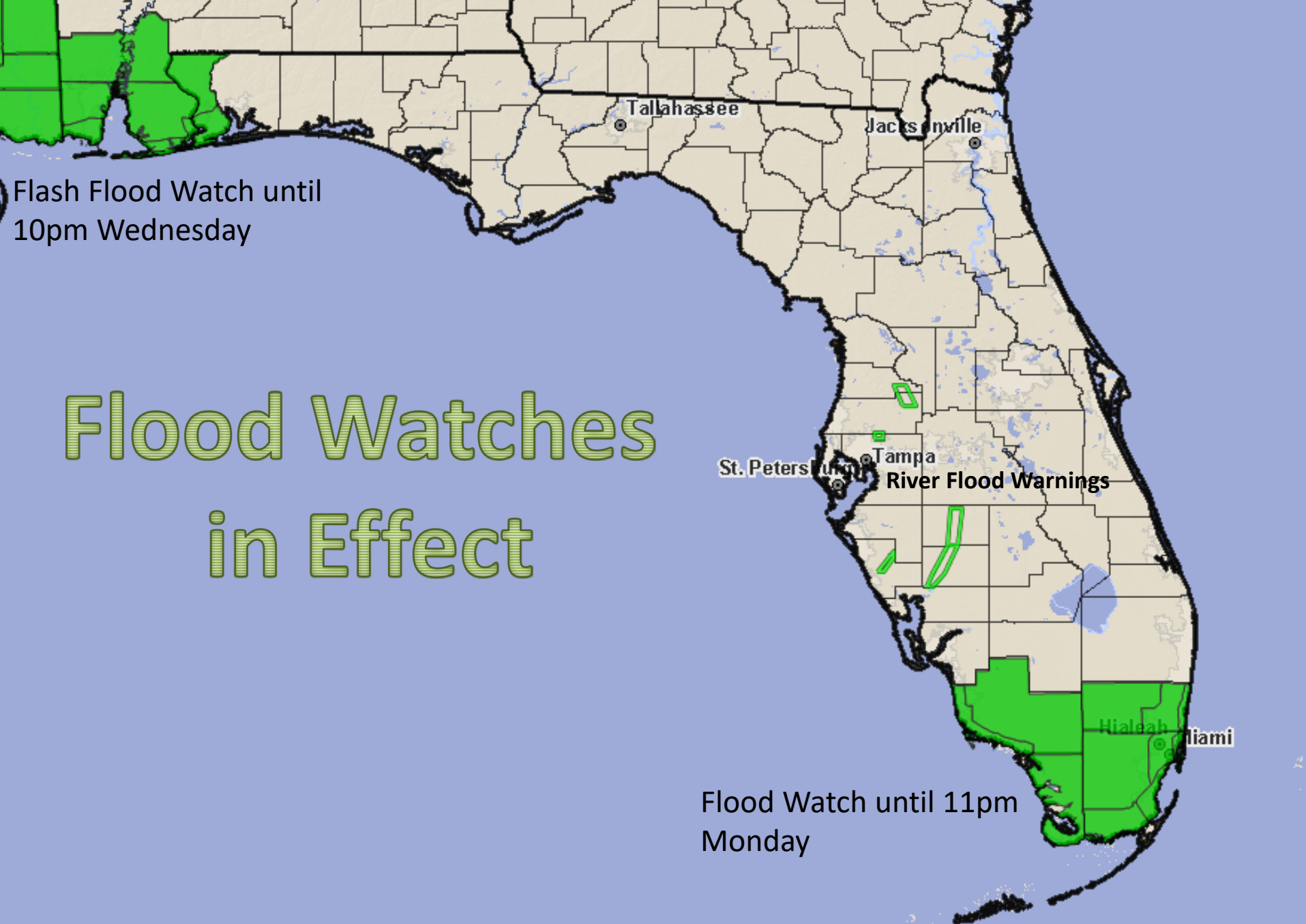




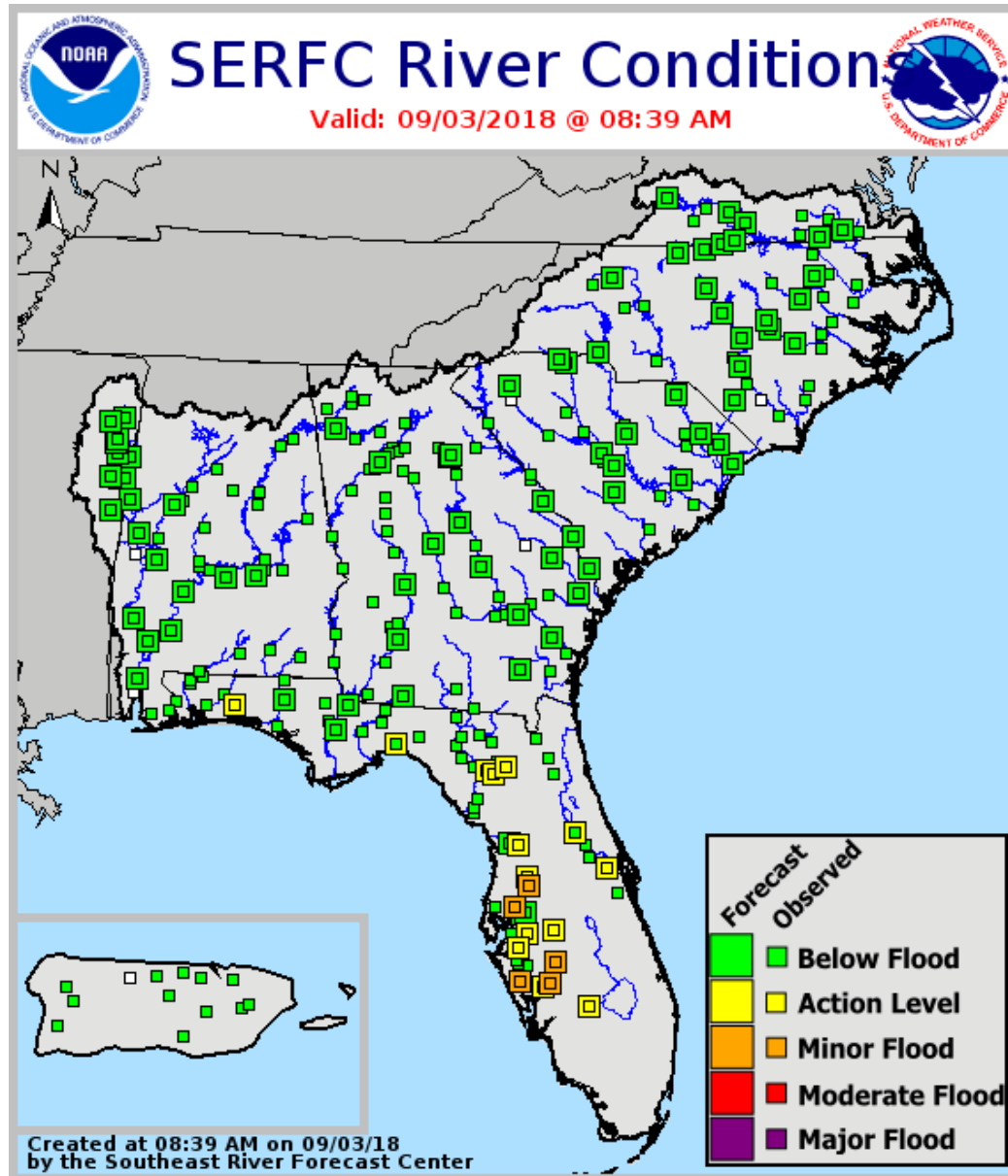
# Flash Flood Threat Monday and Tuesday



An isolated case of Flash Flooding will remain possible today in South Florida and in the western Panhandle on Tuesday.



# Current and Forecast River Conditions



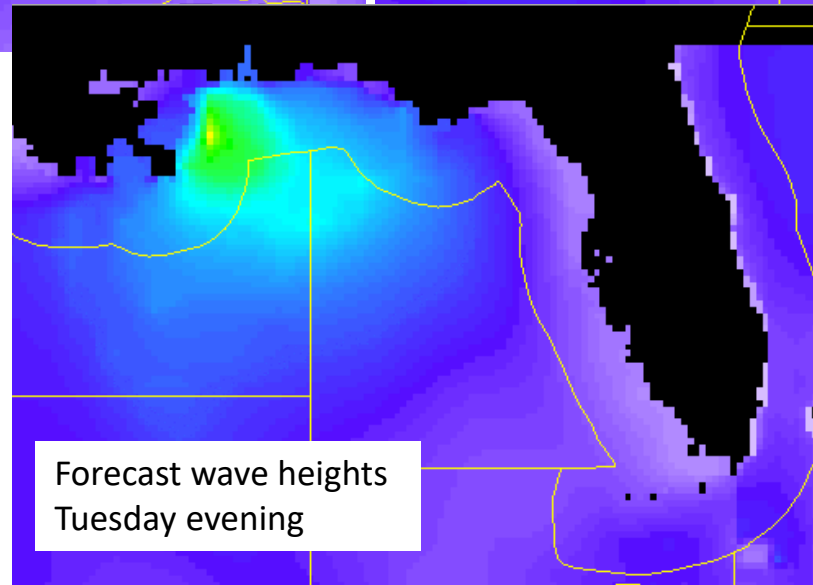
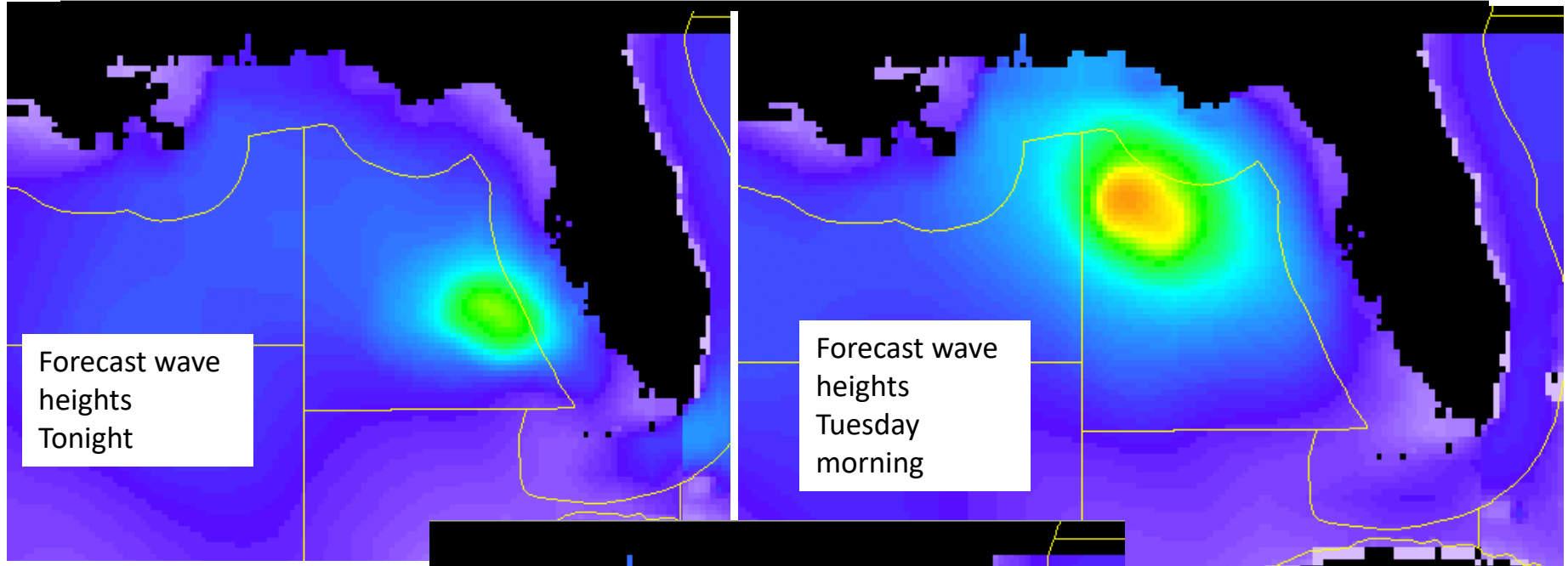
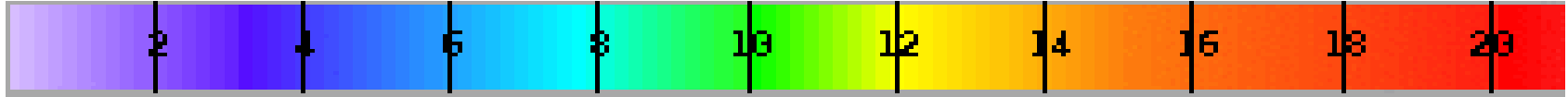
Several rivers in Central and Southwest Florida remain in minor flood stage, but forecast rainfall amounts do not bring any rivers into moderate flood stage. For more specifics on individual river levels, please visit the Southeast River Forecast Center at

<https://www.weather.gov/serfc/>

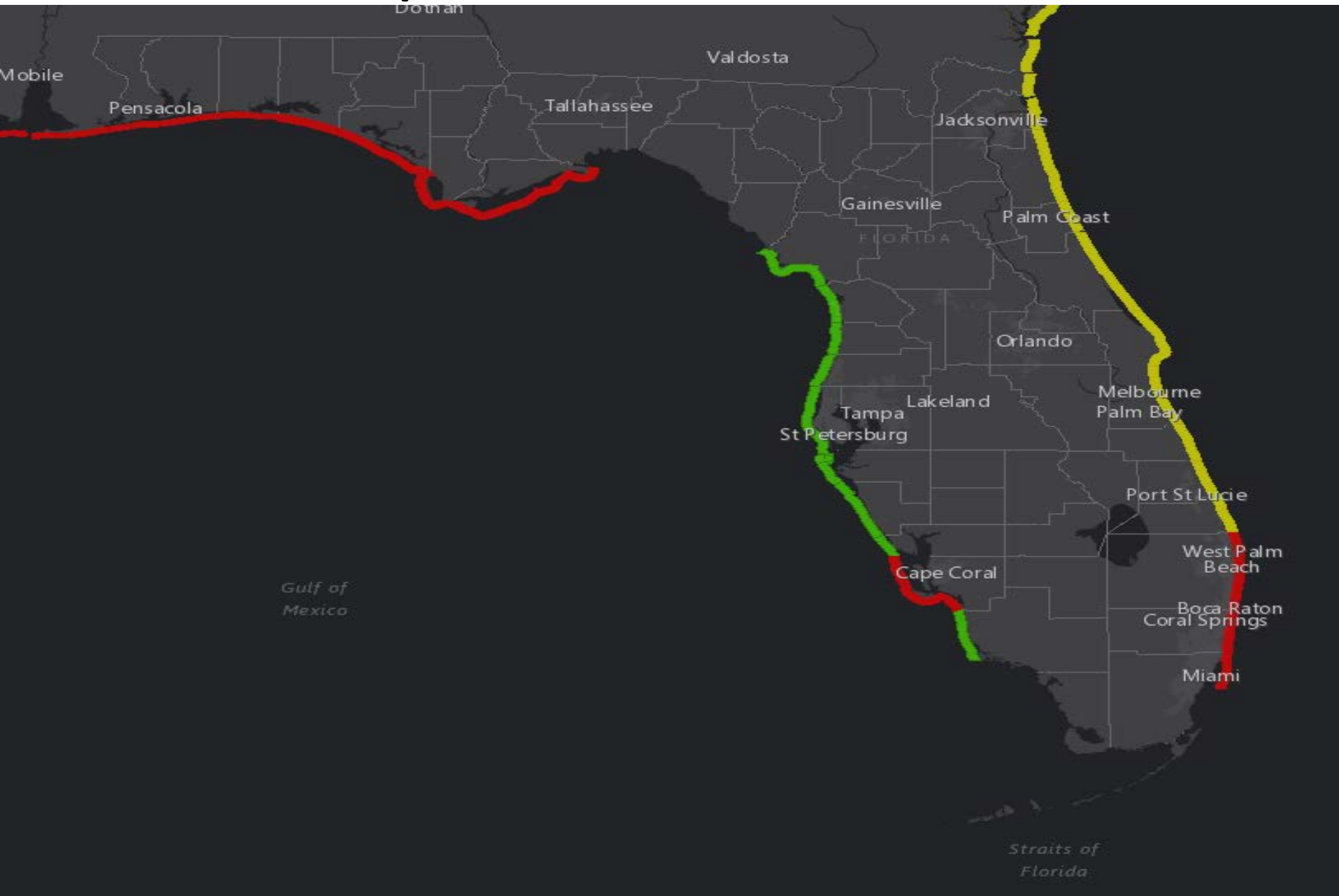
Minor coastal flooding may occur during times of high tide.



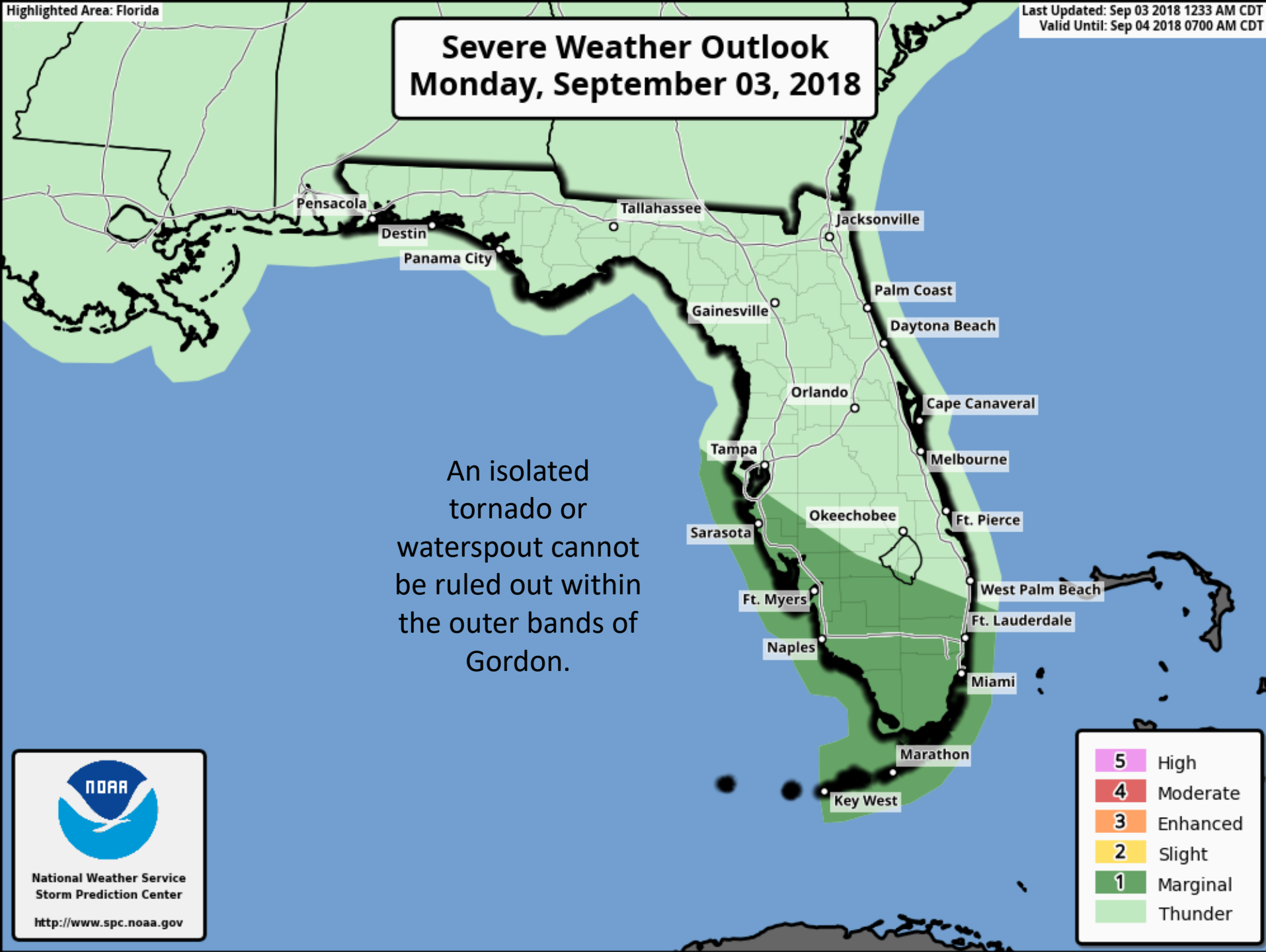
# Forecast Wave Heights (ft)



# Rip Current Forecast



# Severe Weather Outlook Monday, September 03, 2018



National Weather Service  
Storm Prediction Center

<http://www.spc.noaa.gov>





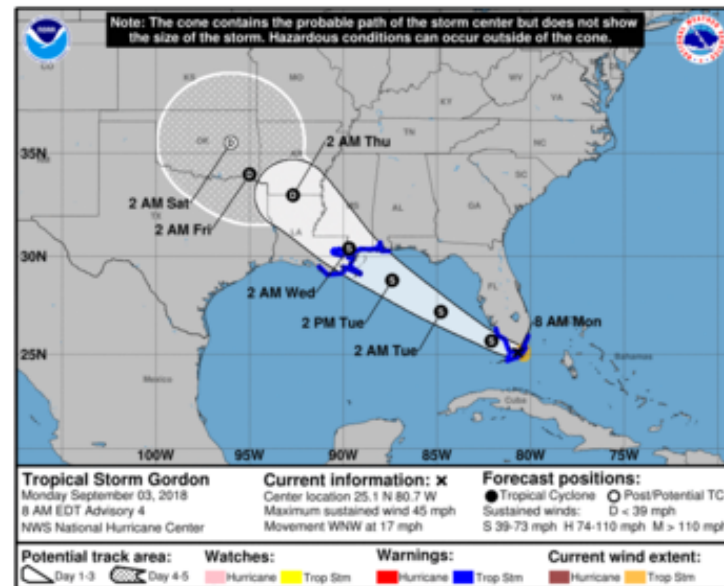
# Key Messages for Tropical Storm Gordon

Advisory 4: 8:30 AM EDT Mon Sep 03, 2018



1. Gordon will bring heavy rainfall and tropical storm conditions to portions of South Florida and the Florida Keys today and a Tropical Storm Warning is in effect for these areas.

2. A Tropical Storm Warning is in effect for portions of the central Gulf Coast, and tropical storm conditions are expected in those areas beginning late Tuesday. Heavy rainfall from Gordon will affect portions of the central Gulf Coast over the next few days, including areas that have already received heavy rainfall from a different weather system. Interests in these areas should monitor products from their local National Weather Service office.



For more information go to [hurricanes.gov](http://hurricanes.gov)

# Summary

- Tropical Storm Florence remains in the open waters of the Tropical Atlantic, several hundred miles from land.
- Maximum sustained winds remain near 60 mph, and only minor fluctuations in strength is expected through the next several days.
- This system is expected to have no impact on land at this time as it eventually recurves north in the open Atlantic.
- At 8:30am Monday, Potential Tropical Cyclone #7 was upgraded to Tropical Storm Gordon while located over Southeast Florida with maximum sustained winds near 45mph.
- Gordon is moving quickly west-northwest near 17mph and should emerge into the southeastern Gulf of Mexico within the next few hours.
- A continued west-northwest motion is expected to continue today and tomorrow, along with some increase in strength, before making landfall along the northern Gulf Coast between Southeast Louisiana and Alabama Tuesday night.
- In the far eastern Atlantic, a tropical wave located more than 400 miles southeast of the Cabo Verde Islands is producing a large area of disorganized showers and thunderstorms. Some slow development of this disturbance is possible during the next several days while the system moves westward to west-northwestward across the eastern tropical Atlantic.
- The National Hurricane Center is currently predicting a 0% chance of development within the next 2 days, but a 30% chance for development later this week.

## Florida Outlook:

- Locally heavy rainfall will continue to be the main impact to Florida from Tropical Storm Gordon.
- Tropical Storm Warnings are now in effect for Miami-Dade, Monroe and Collier Counties through this evening for expected winds in the 20-45mph range. This will result in limited damage, mainly to unsecured lightweight objects, fences and tree limbs which may result in power and communications outages.
- The chances for tropical storm conditions across portions of the Florida Panhandle remain at less than 30%, but breezy conditions are expected after midnight with sustained winds of 15-25mph and gusts of 25-40mph.
- Rainfall totals of 2-4" with isolated higher amounts of 4-6" possible in Southeast Florida, the Florida Keys, and the western Panhandle, which may result in some flooding impacts. A Flood Watch is in effect for South Florida, with a Flash Flood Watch in effect for Escambia County.
- Many rivers across the state are elevated due to recent rainfall, but significant river flooding is not currently expected.
- The storm surge threat with Gordon is very low (1' or less), but minor coastal flooding is possible across South Florida and the Panhandle/Big Bend at times of high tide.
- There will be a moderate to high risk of rip currents many Florida beaches through the next several days.
- An isolated tornado or waterspout across South Florida/Keys cannot be ruled out today, but the overall threat is low.

Another briefing packet will be sent out Monday afternoon. For the latest information on the tropics, please visit the National Hurricane Center website at [www.hurricanes.gov](http://www.hurricanes.gov).



# TROPICAL UPDATE

Created by:

Amy Godsey, Chief State Meteorologist

[Amy.Godsey@em.myflorida.com](mailto:Amy.Godsey@em.myflorida.com)

State Meteorological Support Unit  
Florida Division of Emergency  
Management

Users wishing to subscribe (approval pending) to this distribution list, register at [https://public.govdelivery.com/accounts/FLDEM/subscriber/new?topic\\_id=SERT\\_Met\\_Tropics](https://public.govdelivery.com/accounts/FLDEM/subscriber/new?topic_id=SERT_Met_Tropics).

Other reports available for subscription are available at

<https://public.govdelivery.com/accounts/FLDEM/subscriber/new?preferences=true>