



TROPICAL UPDATE

5 PM EDT

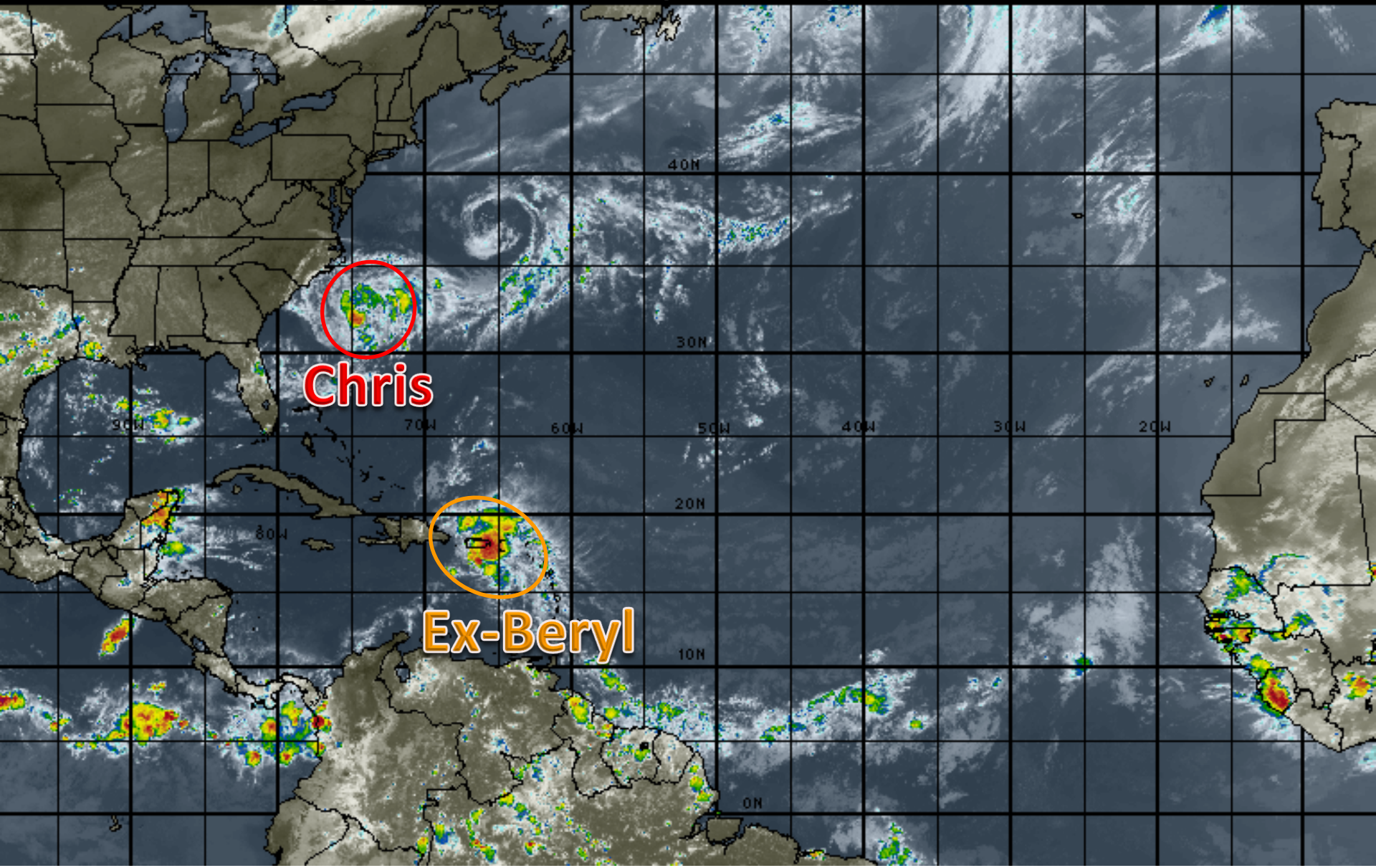
Tuesday, July 10, 2018

**Tropical Storm Chris &
Remnants of Beryl (50%)**

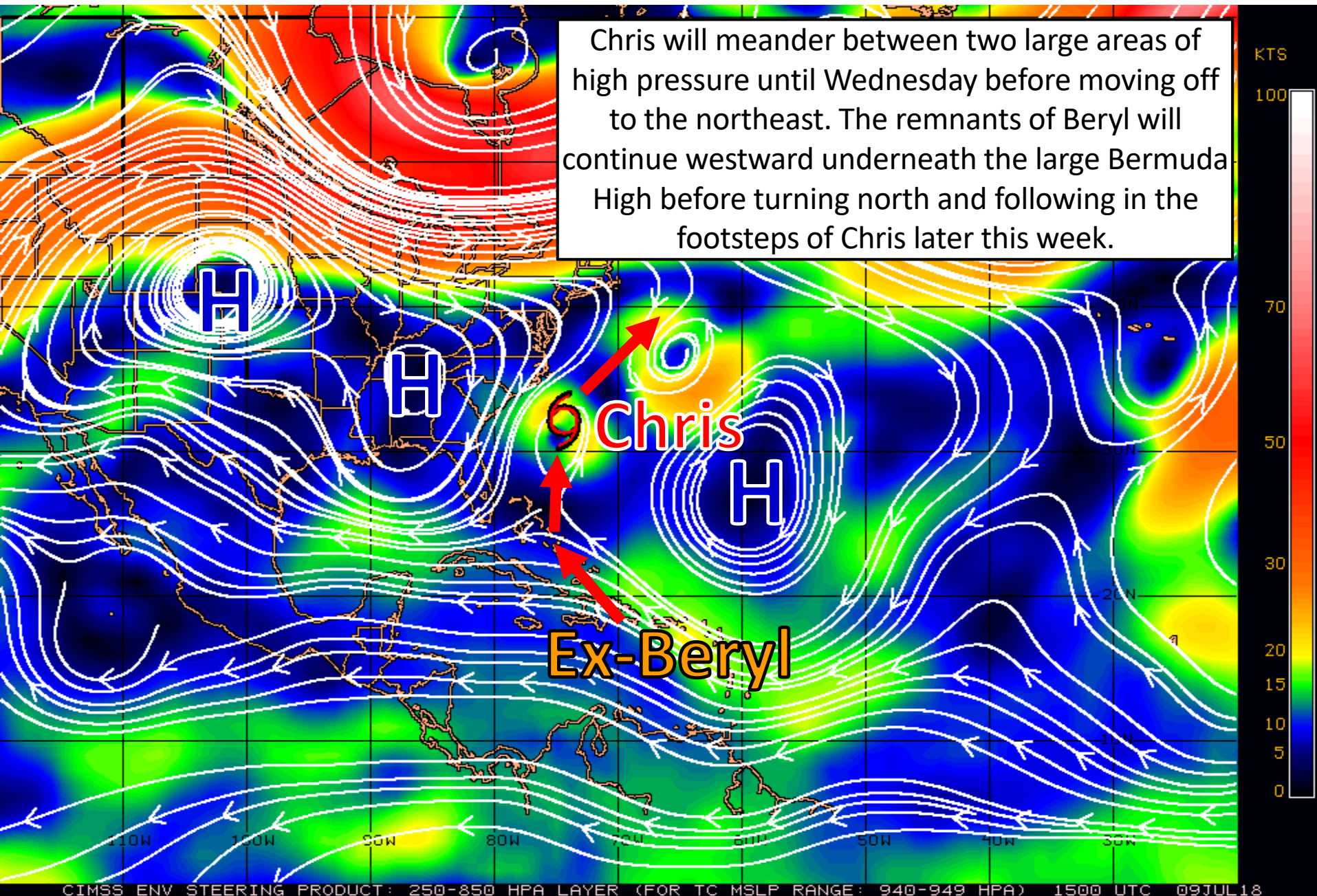
This update is intended for government and emergency response officials, and is provided for informational and situational awareness purposes only. Forecast conditions are subject to change based on a variety of environmental factors. For additional information, or for any life safety concerns with an active weather event please contact your County Emergency Management or Public Safety Office, local National Weather Service forecast office or visit the National Hurricane Center website at www.nhc.noaa.gov.

Atlantic Basin Satellite Image

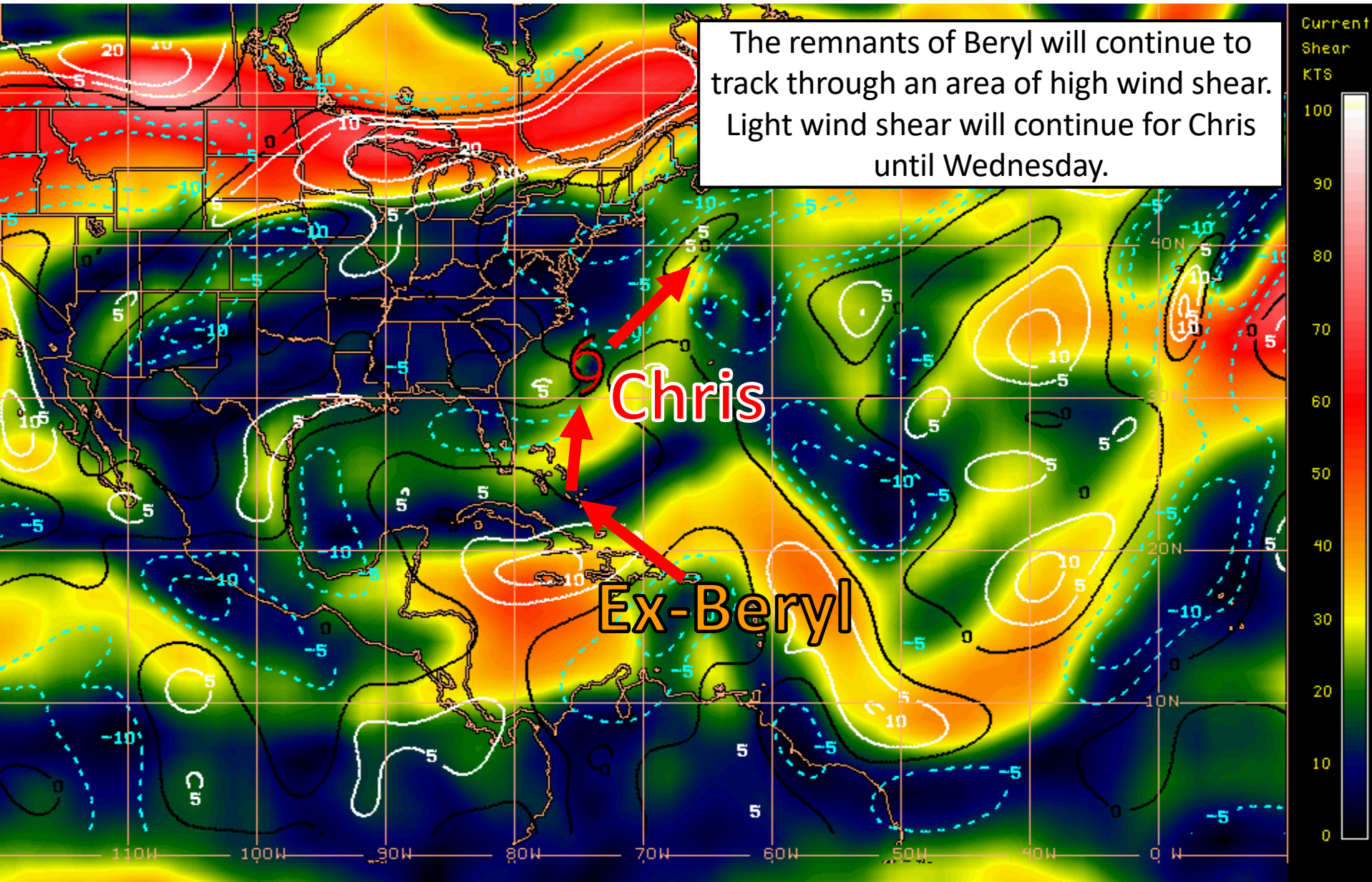
18:00 09-JUL-2018 GMT Copyright © 1998-2018 WSI Corporation <http://www.wsi.com>



Steering Currents



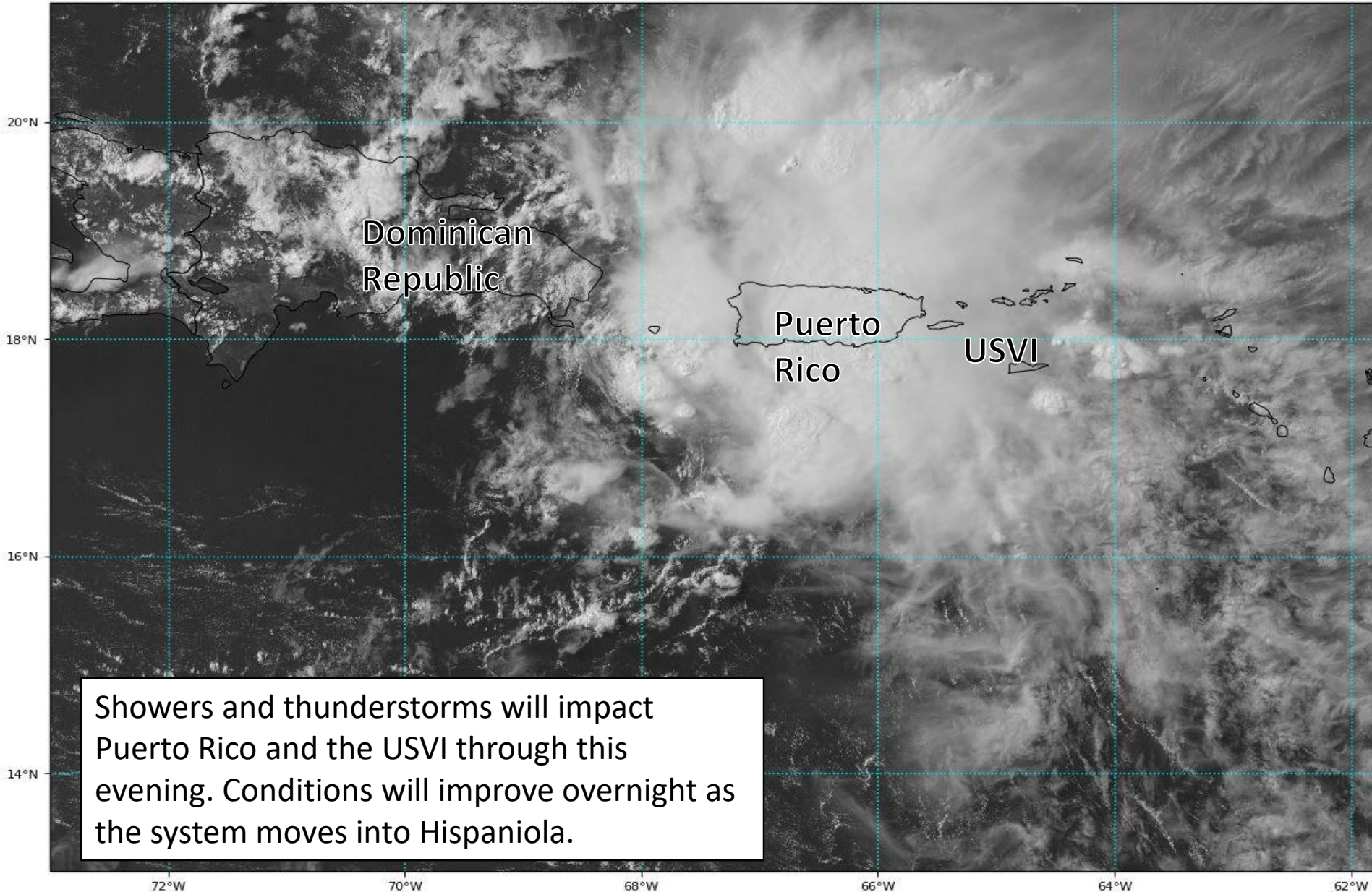
Current Wind Shear (shaded) and Shear Tendency (lines)



Current Satellite – Remnants of Beryl

GOES-16 Channel 2 (visible) Reflectance at 19:51Z Jul 09, 2018

TROPICALTIDBITS.COM





Five-Day Graphical Tropical Weather Outlook

National Hurricane Center Miami, Florida



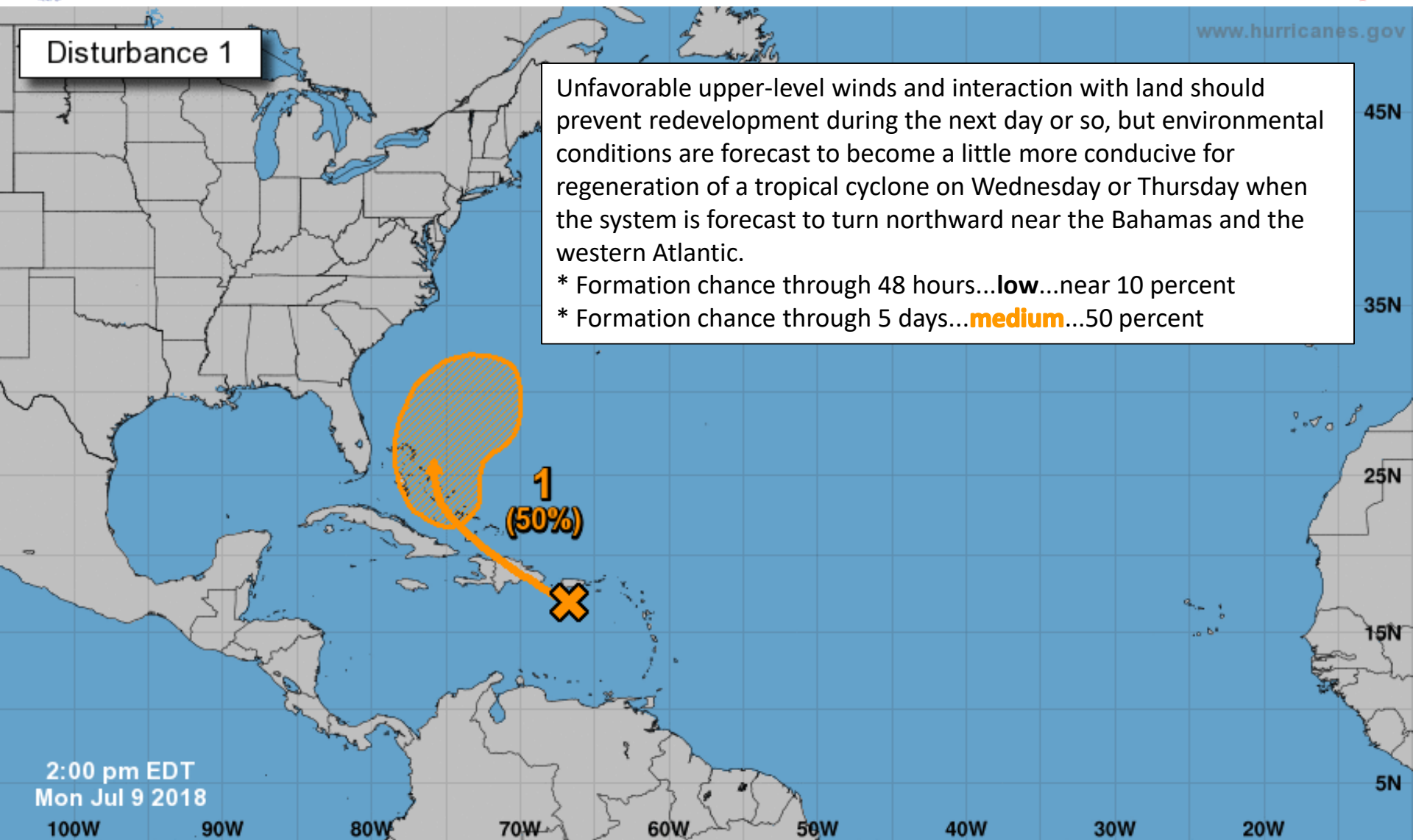
www.hurricanes.gov

Disturbance 1

Unfavorable upper-level winds and interaction with land should prevent redevelopment during the next day or so, but environmental conditions are forecast to become a little more conducive for regeneration of a tropical cyclone on Wednesday or Thursday when the system is forecast to turn northward near the Bahamas and the western Atlantic.

* Formation chance through 48 hours...**low**...near 10 percent

* Formation chance through 5 days...**medium**...50 percent



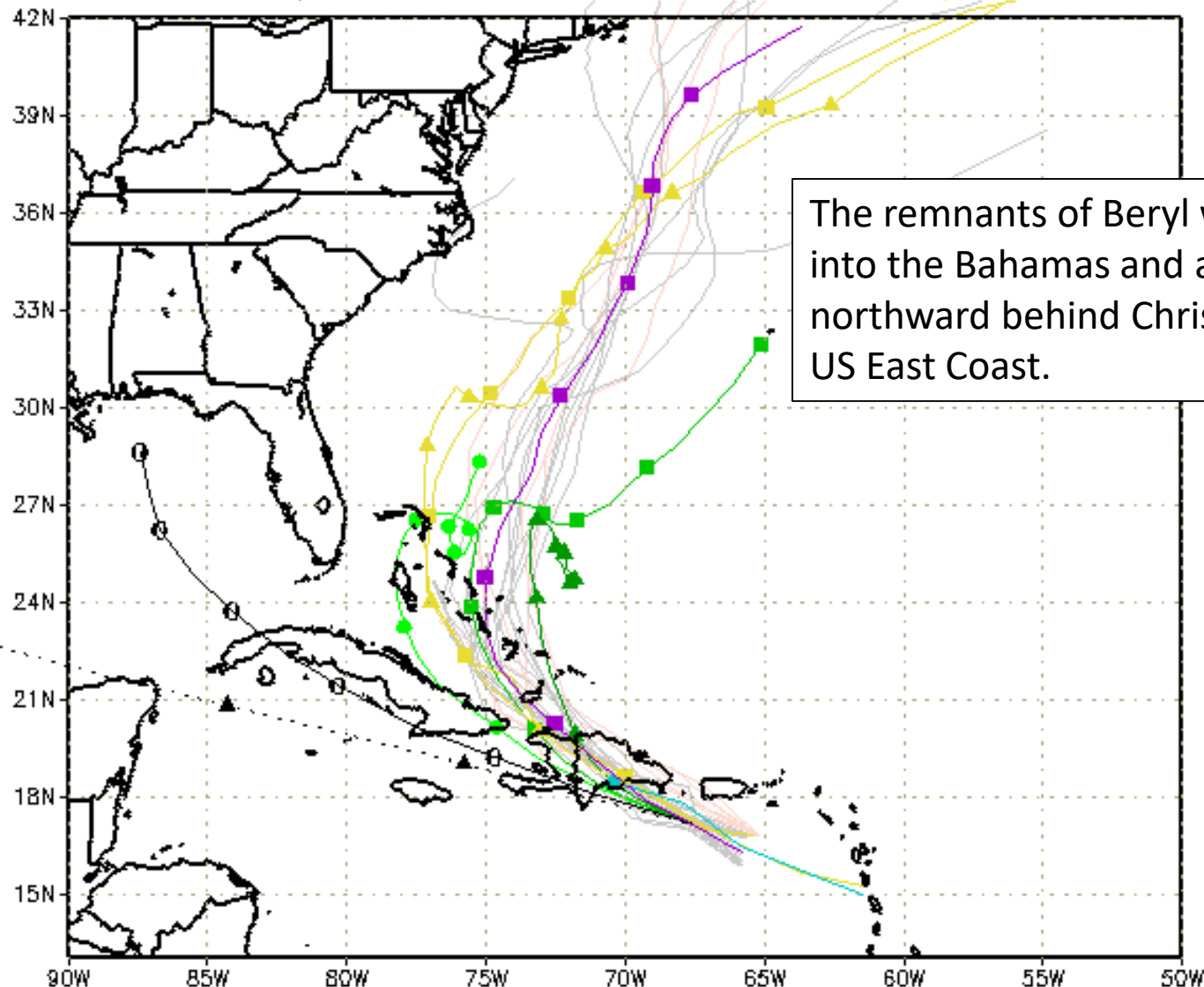
2:00 pm EDT
Mon Jul 9 2018

Current Disturbances and Five-Day Cyclone Formation Chance: < 40% 40-60% > 60%

Tropical or Sub-Tropical Cyclone: Depression Storm Hurricane

Post-Tropical Cyclone or Remnants

XTRP 09/1800Z TABD 09/1800Z HMON Not Avail AVNO 09/1200Z ECMF 09/1200Z
 CLP5 09/1800Z TABM 09/1800Z HWRF Not Avail AEMN 09/1200Z EEMN 09/1200Z
 TVCN 09/1200Z TABS 09/1800Z NVGM 09/0000Z APxx 09/1200Z EExx 09/1200Z
 NHC 09/0300Z UKM 09/1200Z COTC Not Avail CMC 09/1200Z GEMN 09/0000Z



The remnants of Beryl will move into the Bahamas and accelerate northward behind Chris off the US East Coast.

storm_02

sfwmd.gov

weather@sfwmd.gov
09-Jul 16:06EDT

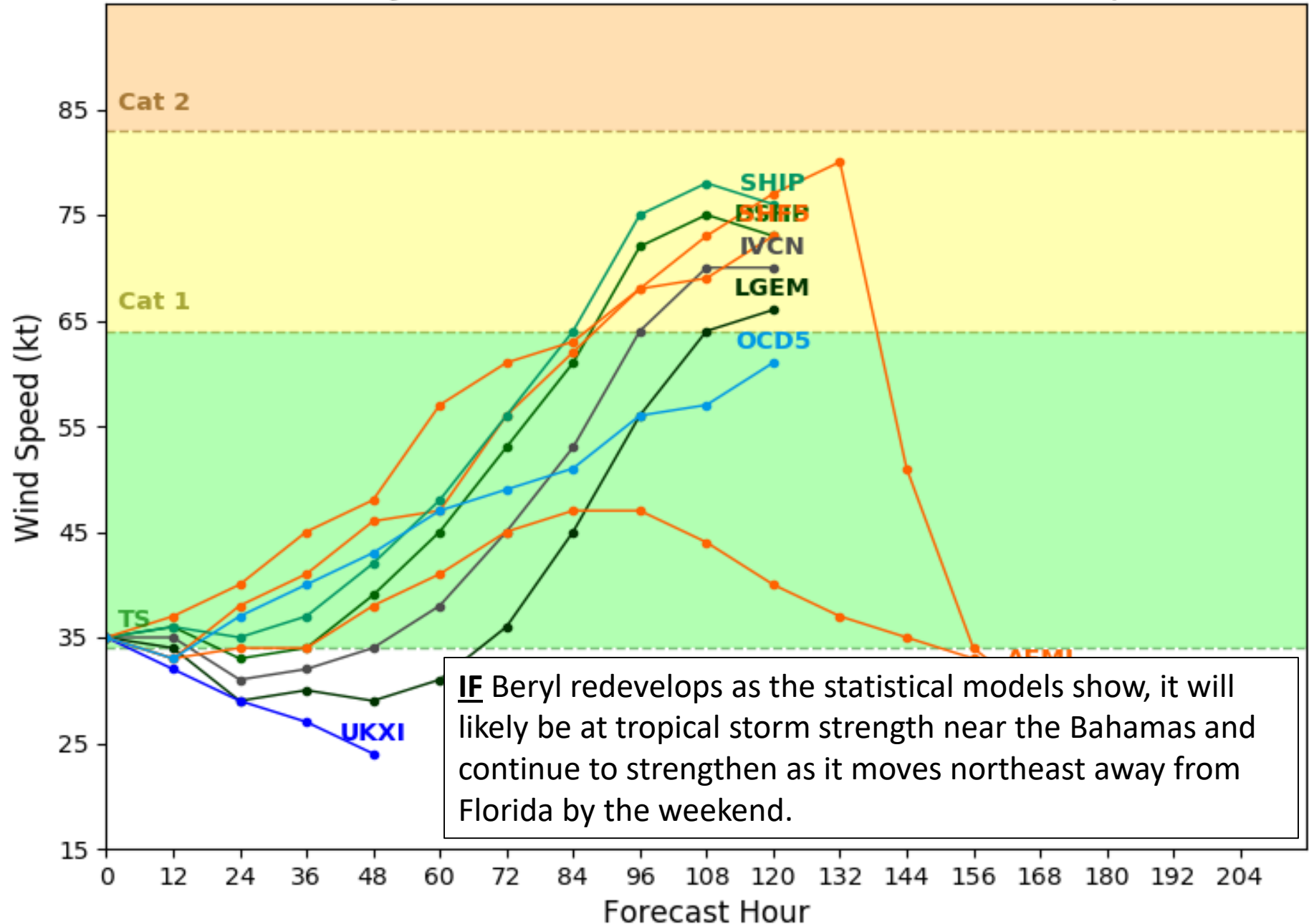
NHC Advisories and County Emergency Management Statements supersede this product.
 This graphic should complement, not replace, NHC discussions.
 If anything on this graphic causes confusion, ignore the entire product.
 For full info, see <http://my.sfwmd.gov/sfwmd/common/images/weather/plots.html>



Remnants of BERYL Model Intensity Guidance

Initialized at 18z Jul 09 2018

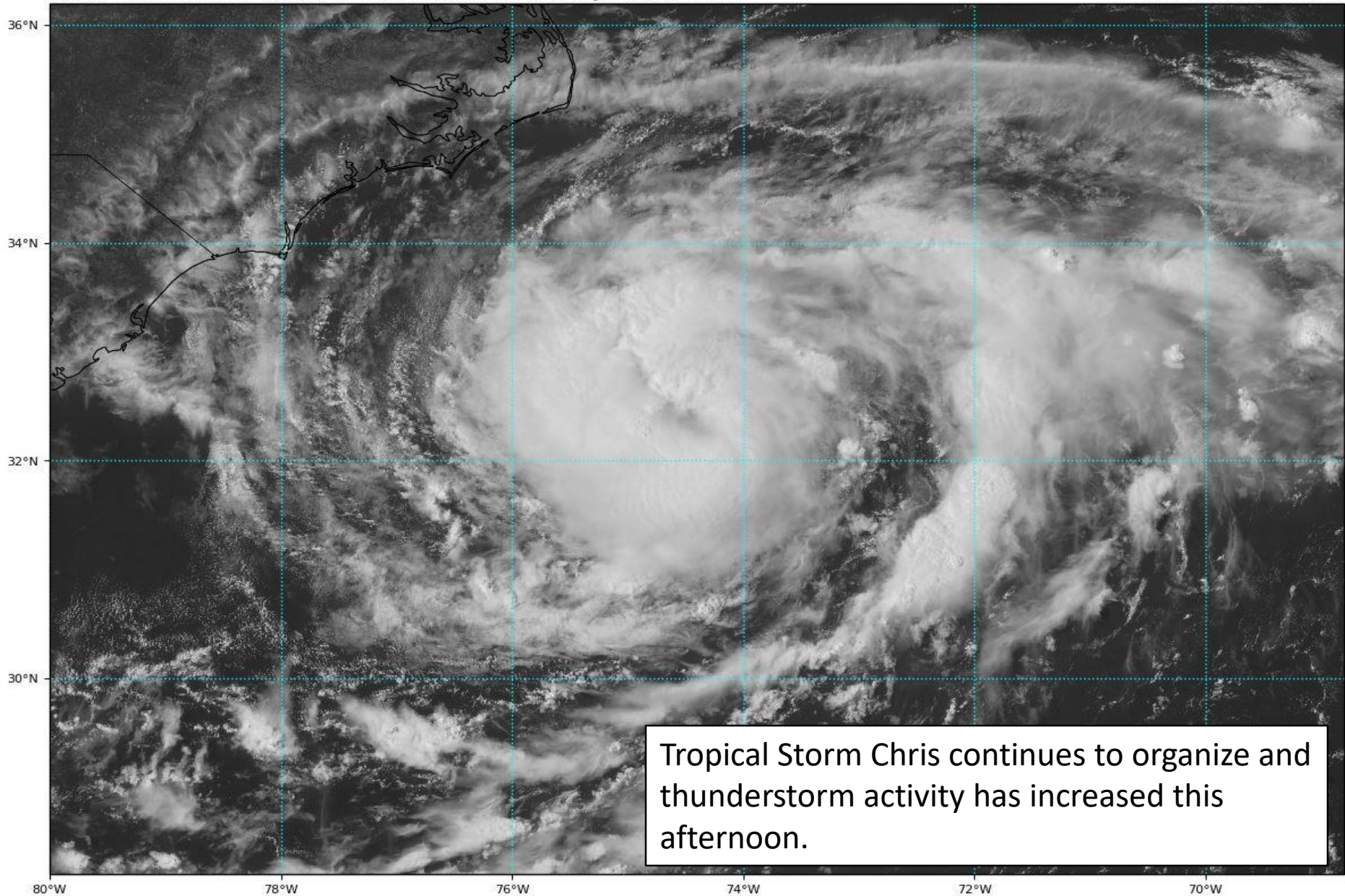
Levi Cowan - tropicaltidbits.com



Current Satellite – Tropical Storm Chris

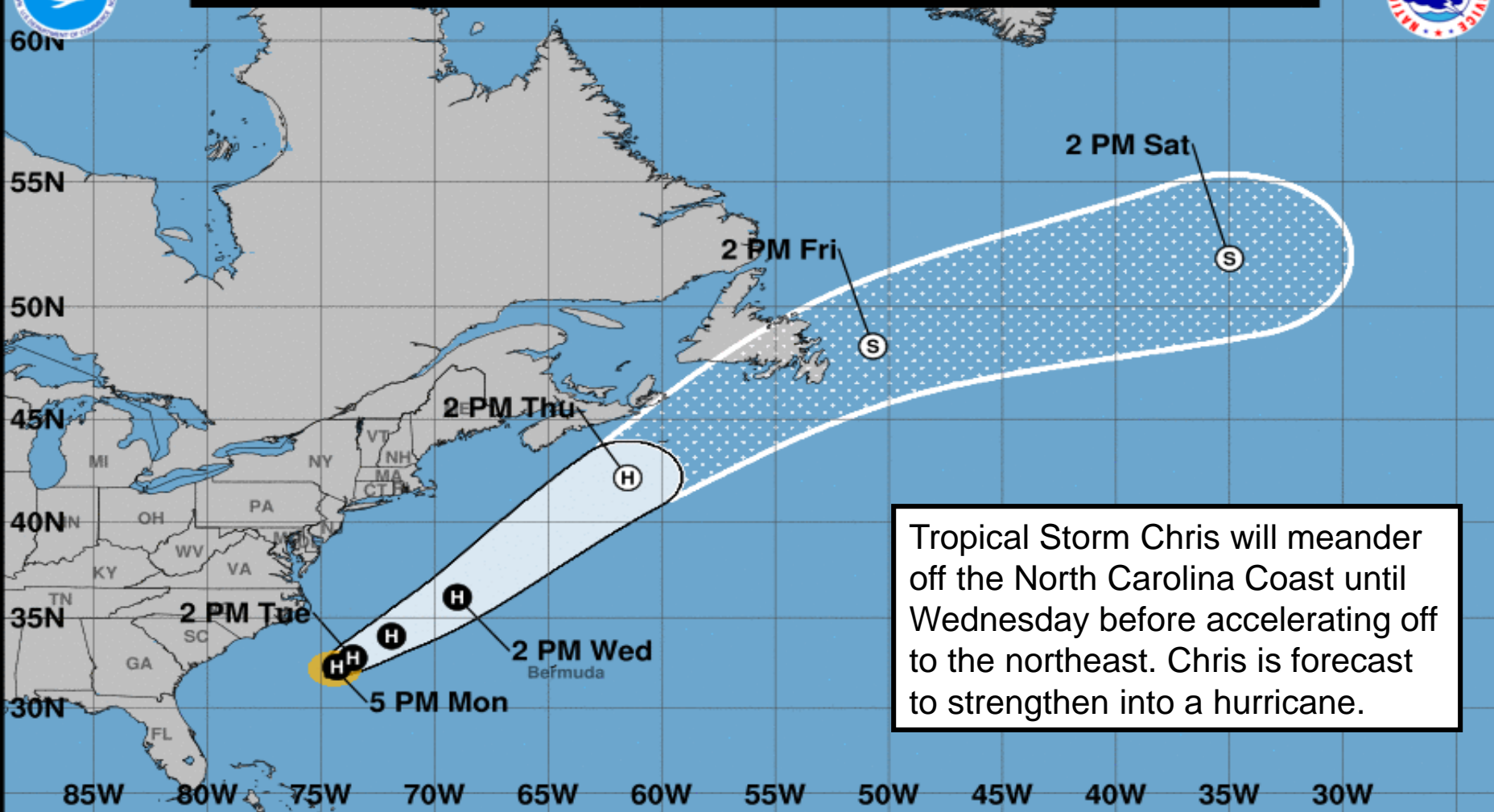
GOES-16 Channel 2 (visible) Reflectance at 20:06Z Jul 09, 2018

TROPICALTIDBITS.COM





Note: The cone contains the probable path of the storm center but does not show the size of the storm. Hazardous conditions can occur outside of the cone.



Tropical Storm Chris
Monday July 09, 2018
5 PM EDT Advisory 13
NWS National Hurricane Center

Current information: x
Center location 32.2 N 74.4 W
Maximum sustained wind 70 mph
Movement: Stationary

Forecast positions:
● Tropical Cyclone ○ Post/Potential TC
Sustained winds: D < 39 mph
S 39-73 mph H 74-110 mph M > 110 mph

Potential track area:

Day 1-3 Day 4-5

Watches:

Hurricane Trop Stm

Warnings:

Hurricane Trop Stm

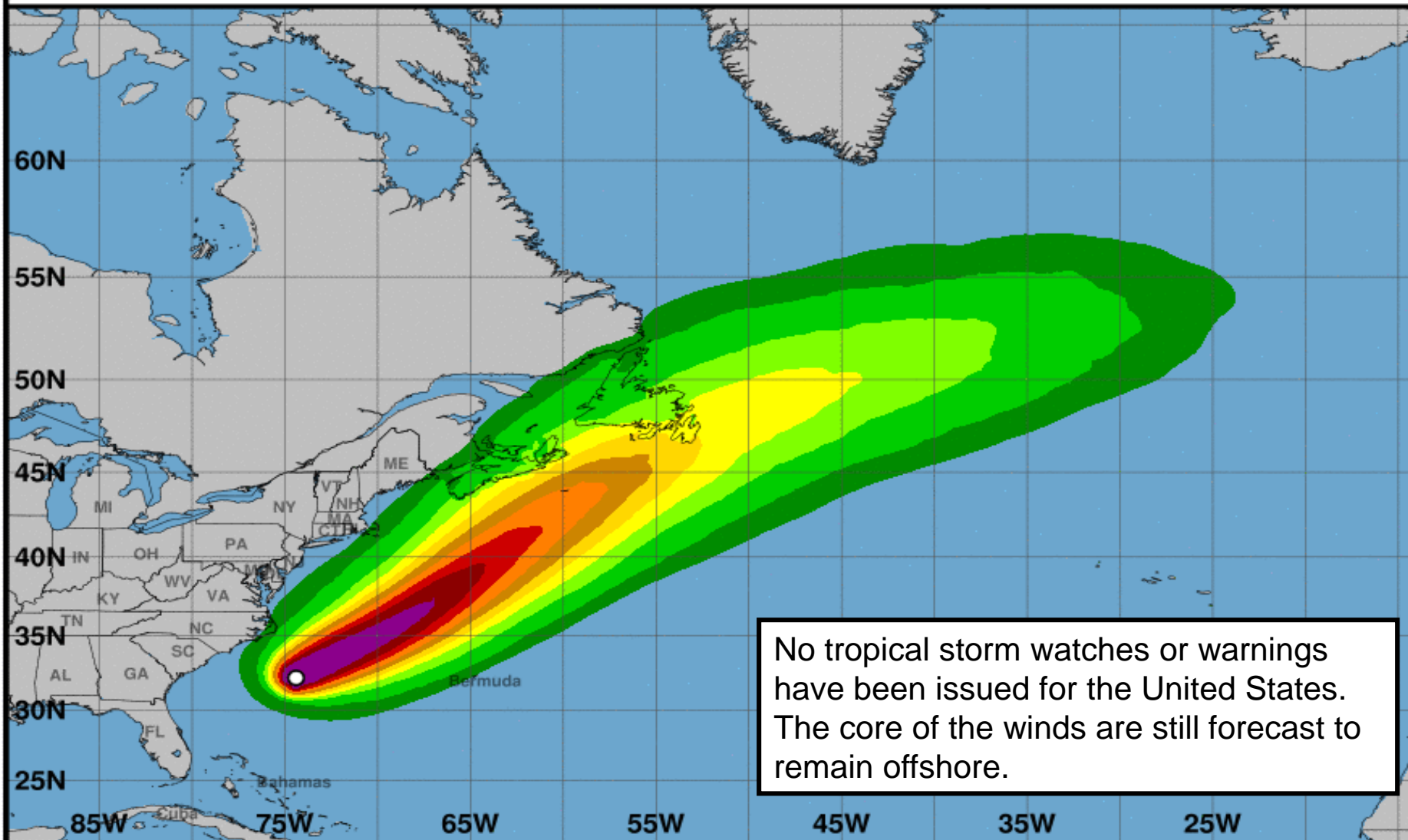
Current wind extent:

Hurricane Trop Stm



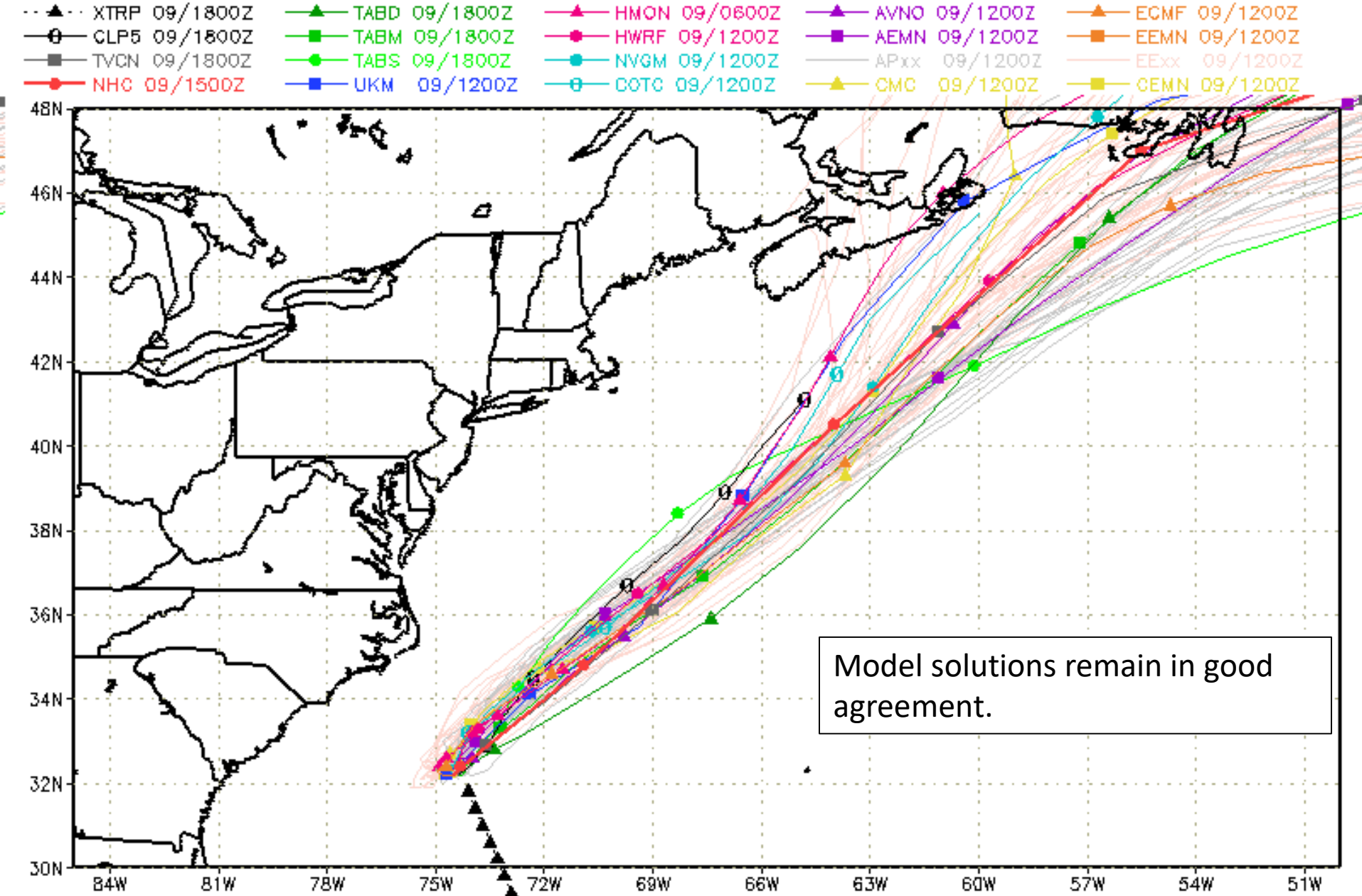
Tropical-Storm-Force Wind Speed Probabilities (Preliminary)

For the 120 hours (5.0 days) from 2 PM EDT MON JUL 09 to 2 PM EDT SAT JUL 14



Probability of tropical-storm-force winds (1-minute average ≥ 39 mph) from Tropical Storm Chris
O indicates Tropical Storm Chris center location at 2 PM EDT MON JUL 09, 2018 (Forecast/Advisory #13)





storm_03

sfwmd.gov

weather@sfwmd.gov
09-Jul 16:06EDT

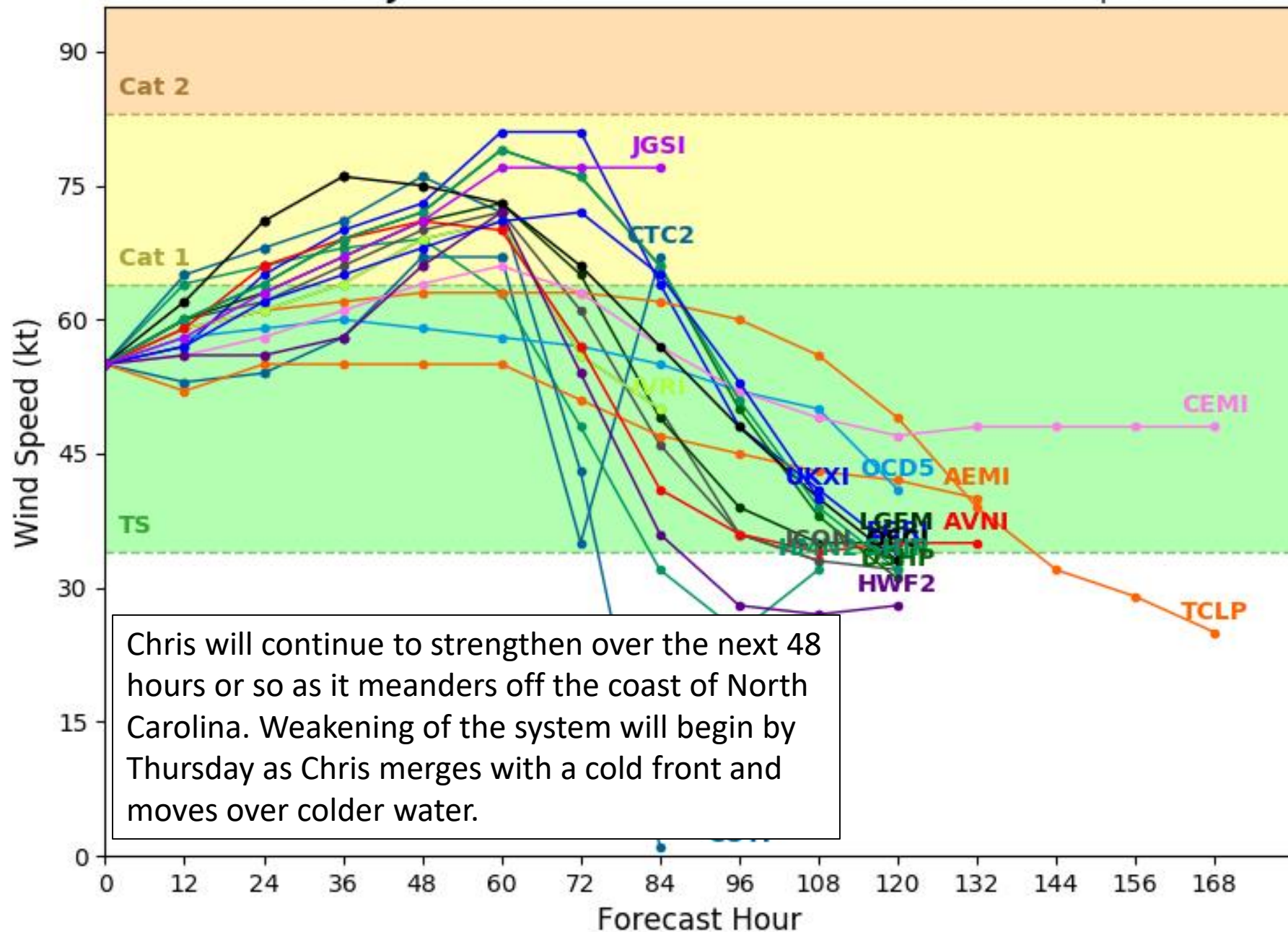
NHC Advisories and County Emergency Management Statements supersede this product. This graphic should complement, not replace, NHC discussions. If anything on this graphic causes confusion, ignore the entire product. For full info, see <http://my.sfwmd.gov/sfwmd/common/images/weather/plots.html>



Tropical Storm CHRIS Model Intensity Guidance

Initialized at 18z Jul 09 2018

Levi Cowan - tropicaltidbits.com



Summary

- The remnants of Beryl will track through Puerto Rico this evening and Hispaniola tonight. Additional rainfall totals of 1-3" can be expected on the island, particularly on the western half. Some gusty winds (25-50 mph) will also be possible.
- Flash Flood Watches are in effect through this evening for all of Puerto Rico and the USVI. Flash Flood Warnings continue for the eastern portions of the island, including San Juan.
- The remnants of Beryl will have a chance of redevelopment near the Bahamas, between the United States and Bermuda later this week as it tracks north and northeast.
- The NHC has given the odds of development over the next 48 hours at 10% (low), but 50% (medium) at days 3-5.
- As of 5pm ET, Tropical Storm Chris was located about 215 miles south-southeast of Cape Hatteras, North Carolina and was stationary. Maximum sustained winds have increased to 70 mph. Tropical Storm force winds extend out 70 miles.
- Further strengthening is expected over the next 48 hours and Chris is expected to become a hurricane.
- By Wednesday, Chris will finally begin to accelerate to the northeast as a cold front approaches. The core of the winds and rain associated with Chris will remain well offshore of the United States.
- Hurricane Hunters will continue to investigate Chris regularly through Wednesday.

Florida Outlook:

- At this time, the remnants of Beryl and Tropical Storm Chris are not expected to directly impact Florida.
- As Tropical Storm Chris continues to strengthen, the rip current risk will increase along the East Coast of Florida, particularly from Martin County to the north. Wave heights will increase to 3-5' tomorrow in Northeast Florida.

Another briefing packet will be issued tomorrow morning. For the latest information on the tropics, please visit the National Hurricane Center website at www.hurricanes.gov.



TROPICAL UPDATE

Created by:

Michael Spagnolo, Deputy State Meteorologist
michael.spagnolo@em.myflorida.com

State Meteorological Support Unit
Florida Division of Emergency
Management

Users wishing to subscribe (approval pending) to this distribution list, register at https://public.govdelivery.com/accounts/FLDEM/subscriber/new?topic_id=SERT_Met_Tropics.

Other reports available for subscription are available at <https://public.govdelivery.com/accounts/FLDEM/subscriber/new?preferences=true>