



TROPICAL UPDATE

11 AM EDT

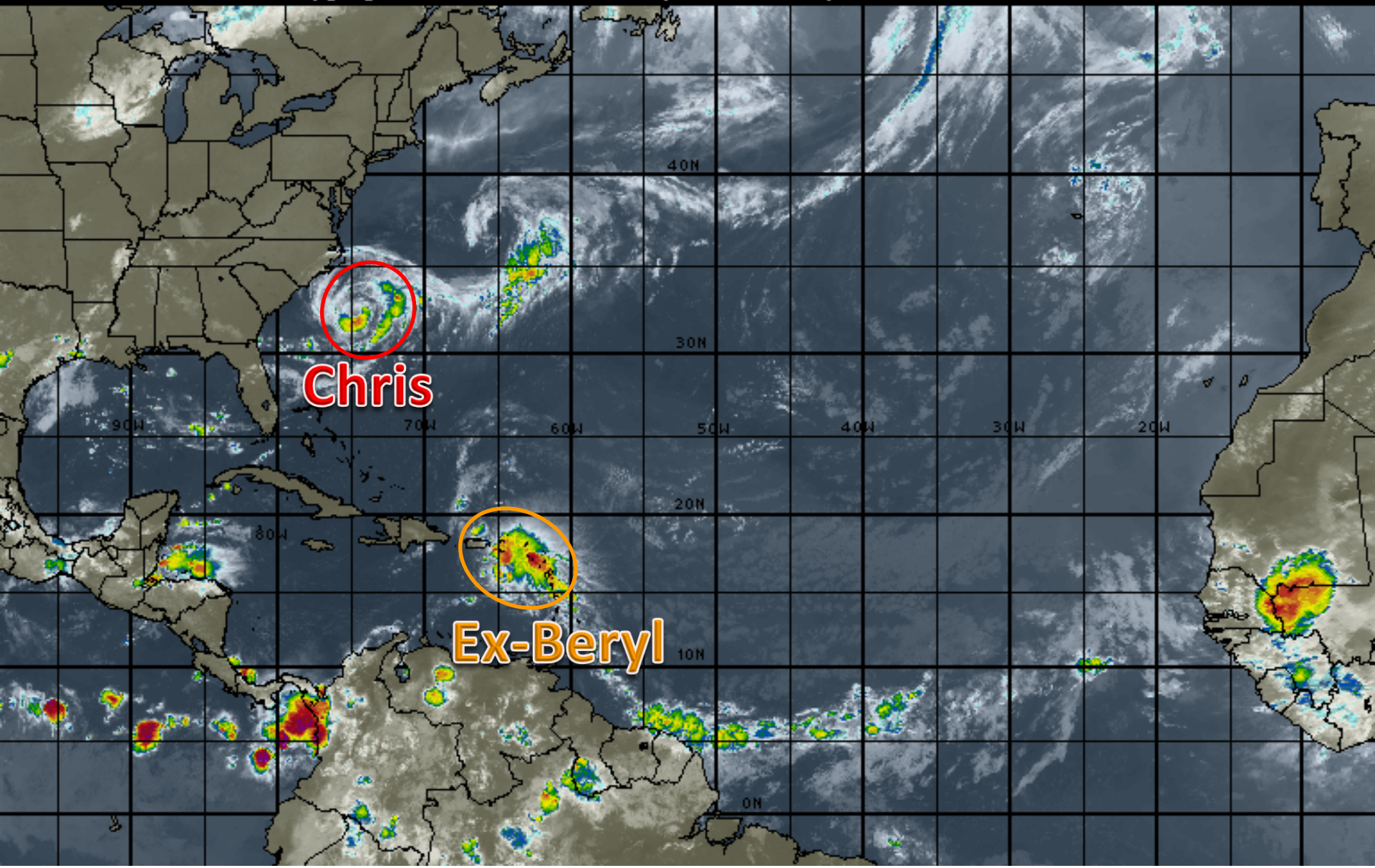
Monday, July 9, 2018

**Tropical Storm Chris &
Remnants of Beryl (40%)**

This update is intended for government and emergency response officials, and is provided for informational and situational awareness purposes only. Forecast conditions are subject to change based on a variety of environmental factors. For additional information, or for any life safety concerns with an active weather event please contact your County Emergency Management or Public Safety Office, local National Weather Service forecast office or visit the National Hurricane Center website at www.nhc.noaa.gov.

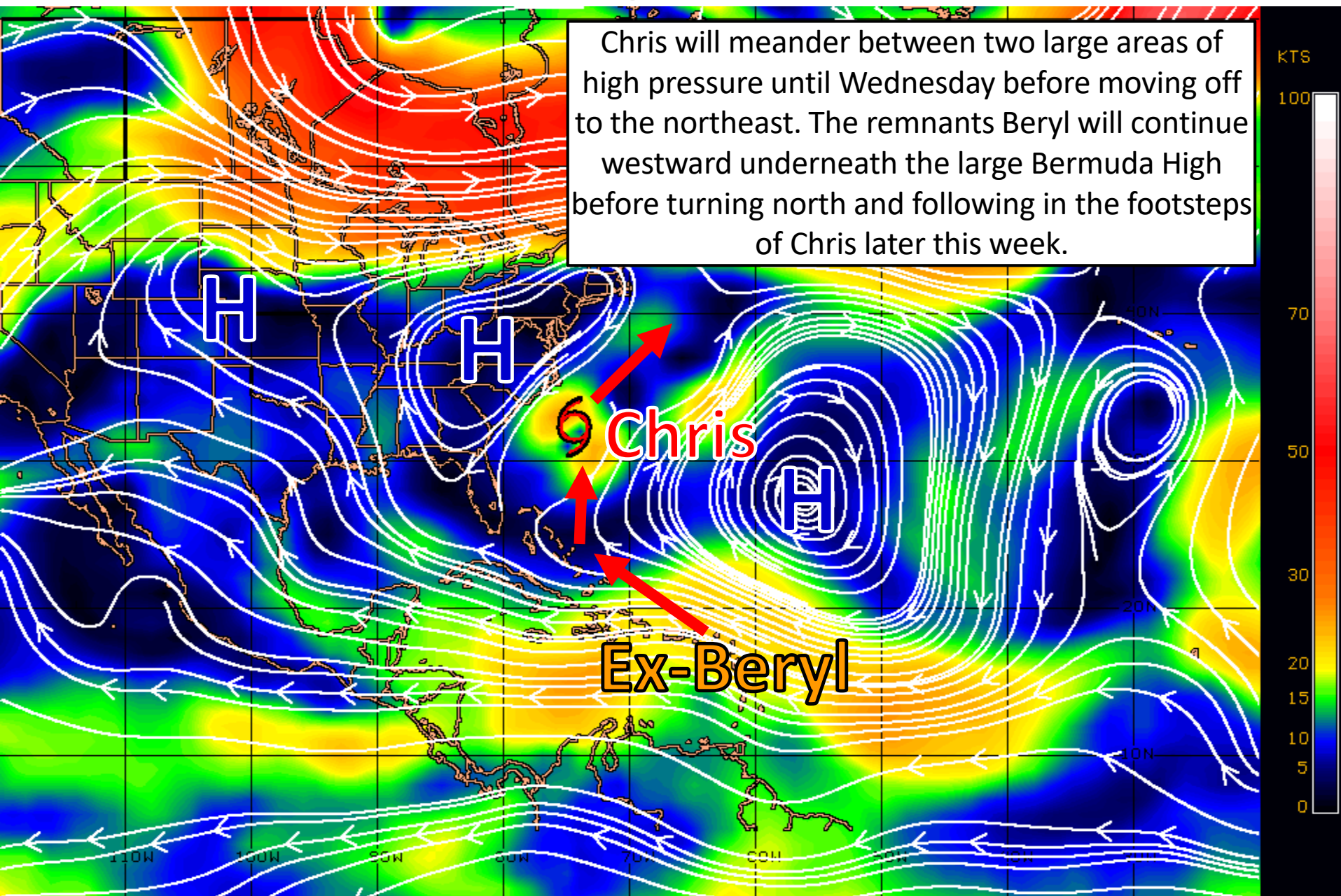
Atlantic Basin Satellite Image

12:00 09-JUL-2018 GMT Copyright © 1998-2018 WSI Corporation <http://www.usi.com>

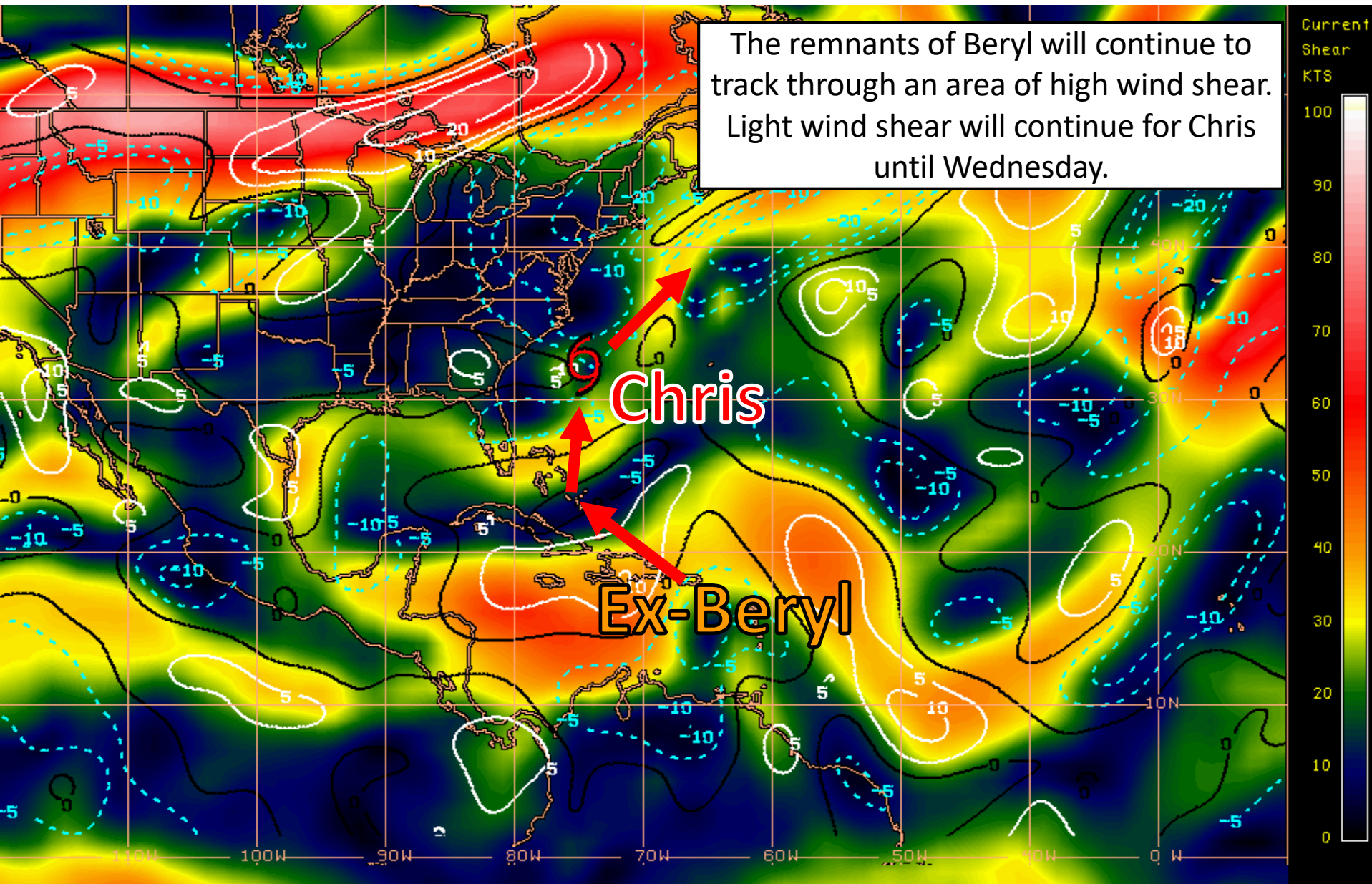


Steering Currents

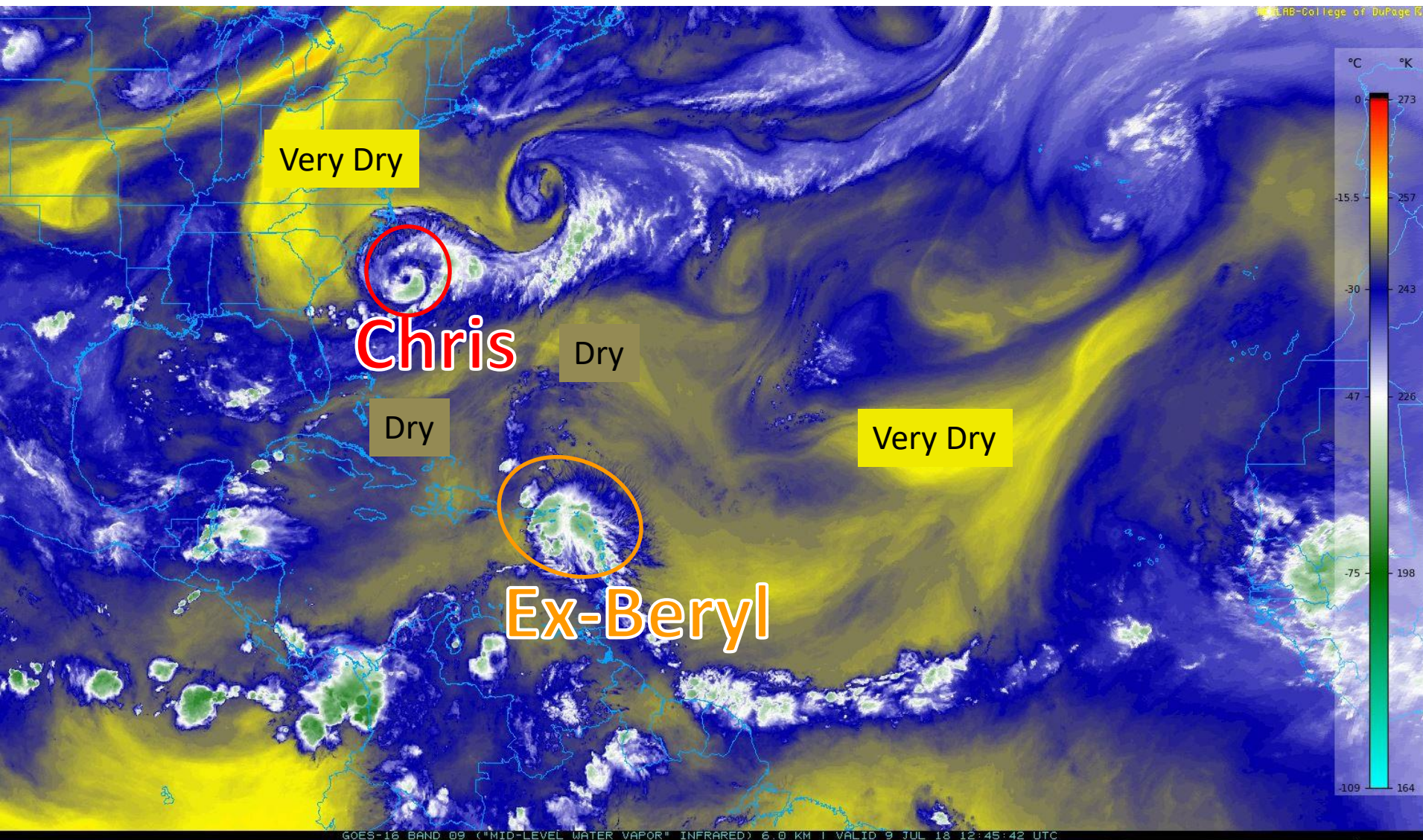
Chris will meander between two large areas of high pressure until Wednesday before moving off to the northeast. The remnants Beryl will continue westward underneath the large Bermuda High before turning north and following in the footsteps of Chris later this week.



Current Wind Shear (shaded) and Shear Tendency (lines)



Current Water Vapor Imagery



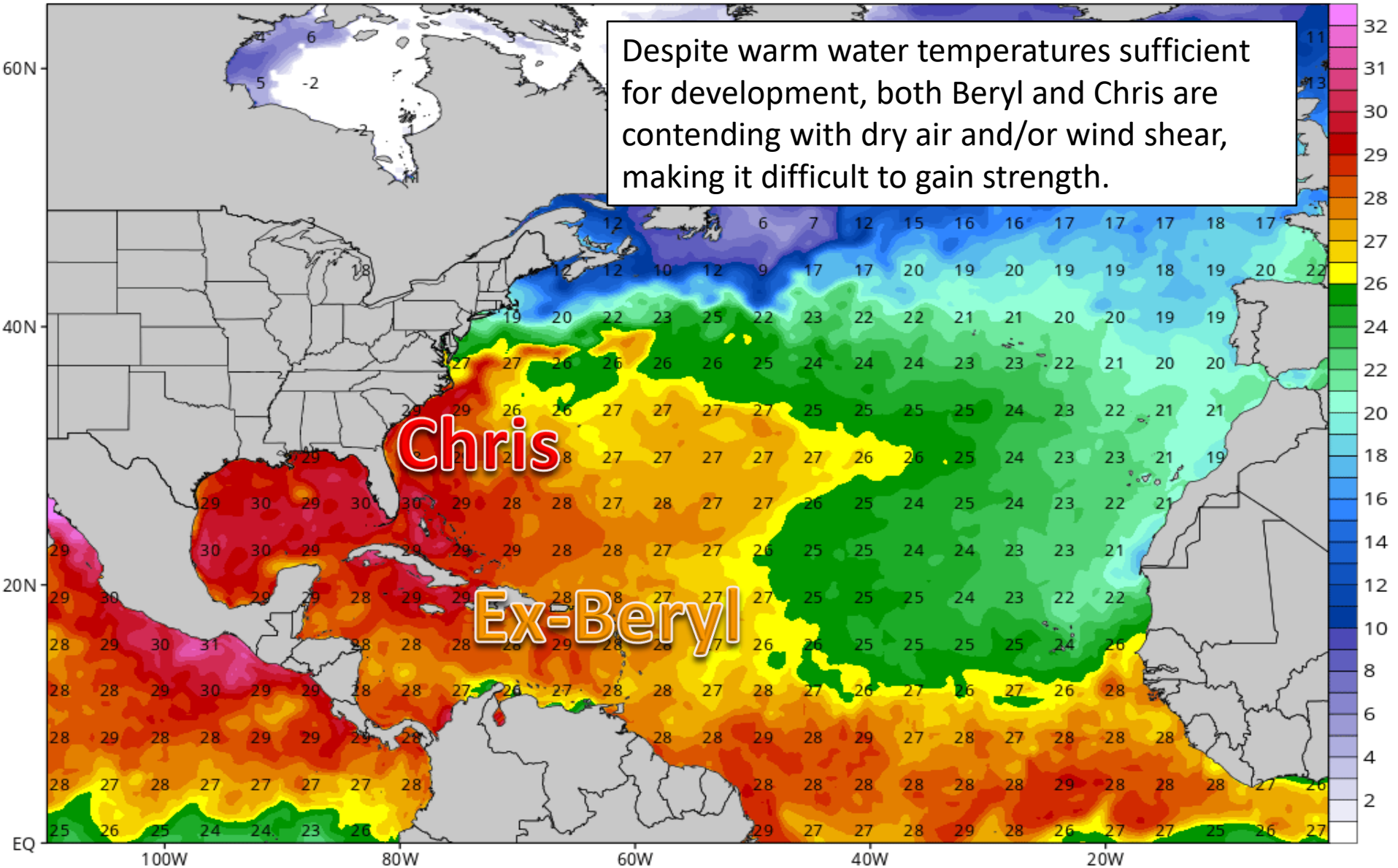
Dry air continues to be a limiting factor for both systems, as even Chris has ingested some dry air at times.

Water Temperatures

CDAS Sea Surface Temperature (°C)

Analysis Time: 06z Jul 09 2018

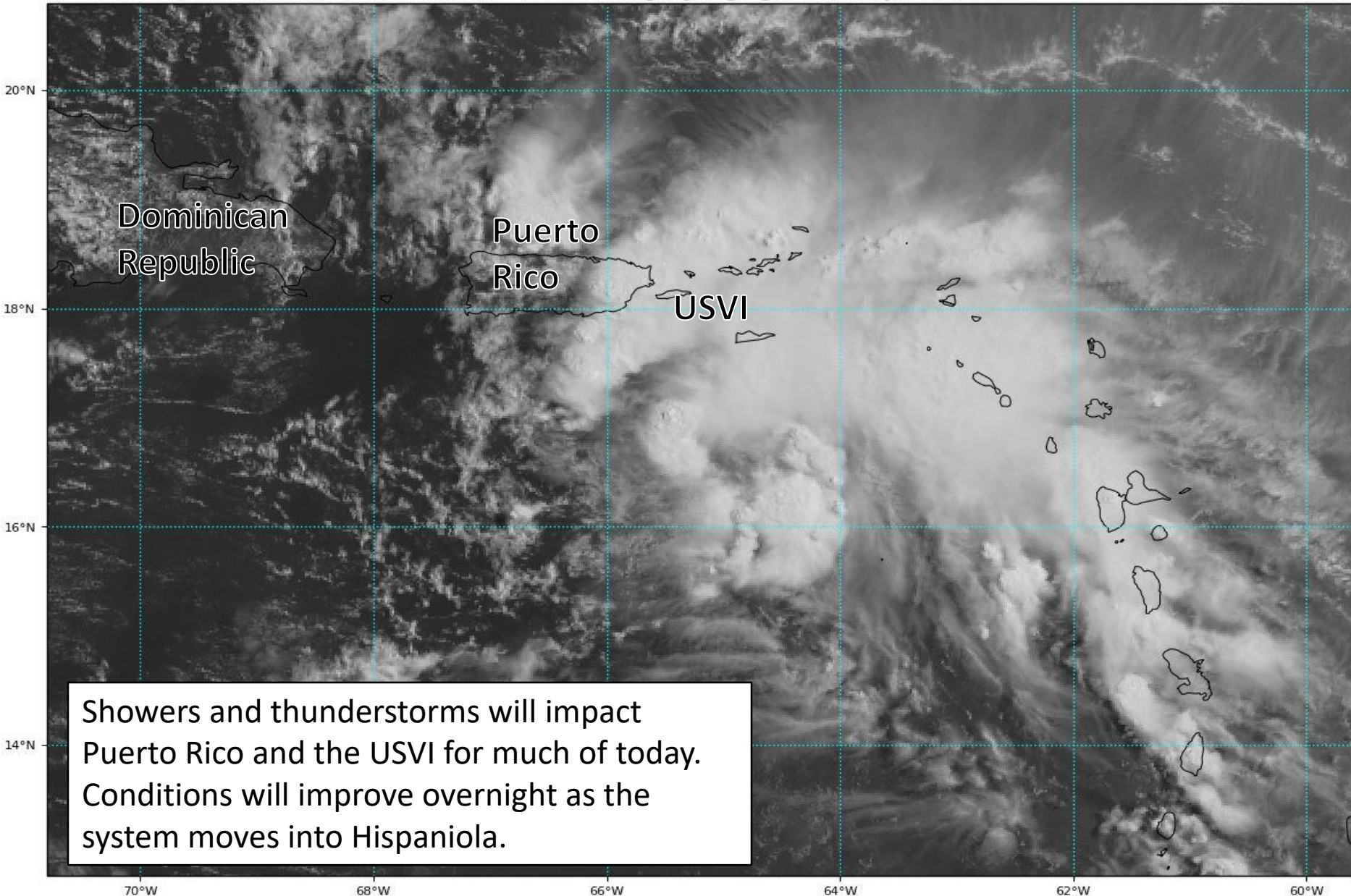
TROPICALTIDBITS.COM



Current Satellite – Remnants of Beryl

GOES-16 Channel 2 (visible) / Channel 7 (shortwave IR) [Day/Night] at 13:06Z Jul 09, 2018

TROPICALTIDBITS.COM





Note: The cone contains the probable path of the storm center but does not show the size of the storm. Hazardous conditions can occur outside of the cone.



Remnants Of Beryl

Sunday July 08, 2018
11 PM AST Advisory 15
NWS National Hurricane Center

Current information: ●

Center location 15.8 N 62.4 W
Maximum sustained wind 40 mph
Movement WNW at 26 mph

Forecast positions:

● Tropical Cyclone ○ Post/Potential TC
Sustained winds: D < 39 mph
S 39-73 mph H 74-110 mph M > 110 mph

Potential track area:

Day 1-3 Day 4-5

Watches:

Hurricane Tropical Storm

Warnings:

Hurricane Tropical Storm



Five-Day Graphical Tropical Weather Outlook

National Hurricane Center Miami, Florida



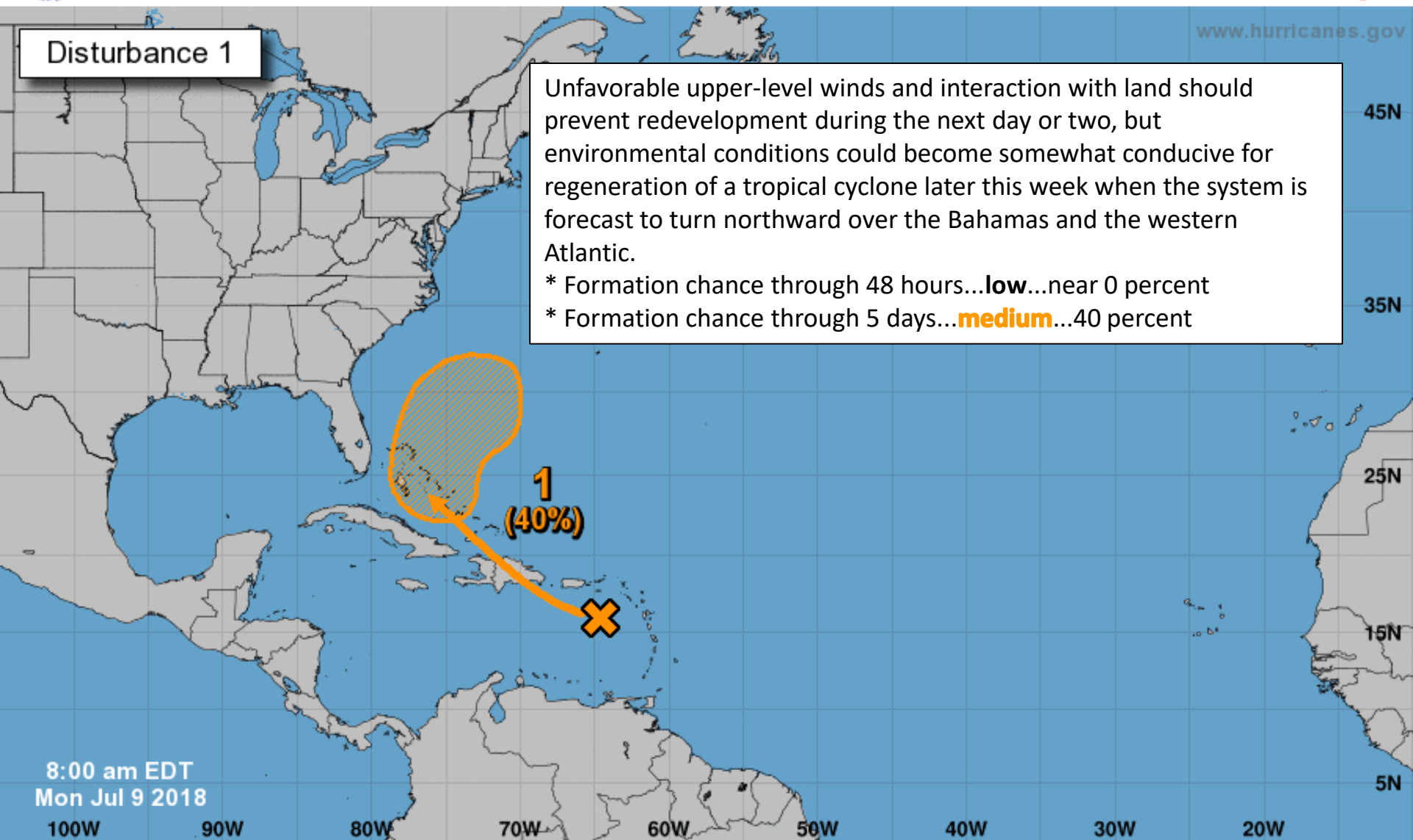
www.hurricanes.gov

Disturbance 1

Unfavorable upper-level winds and interaction with land should prevent redevelopment during the next day or two, but environmental conditions could become somewhat conducive for regeneration of a tropical cyclone later this week when the system is forecast to turn northward over the Bahamas and the western Atlantic.

* Formation chance through 48 hours...**low**...near 0 percent

* Formation chance through 5 days...**medium**...40 percent



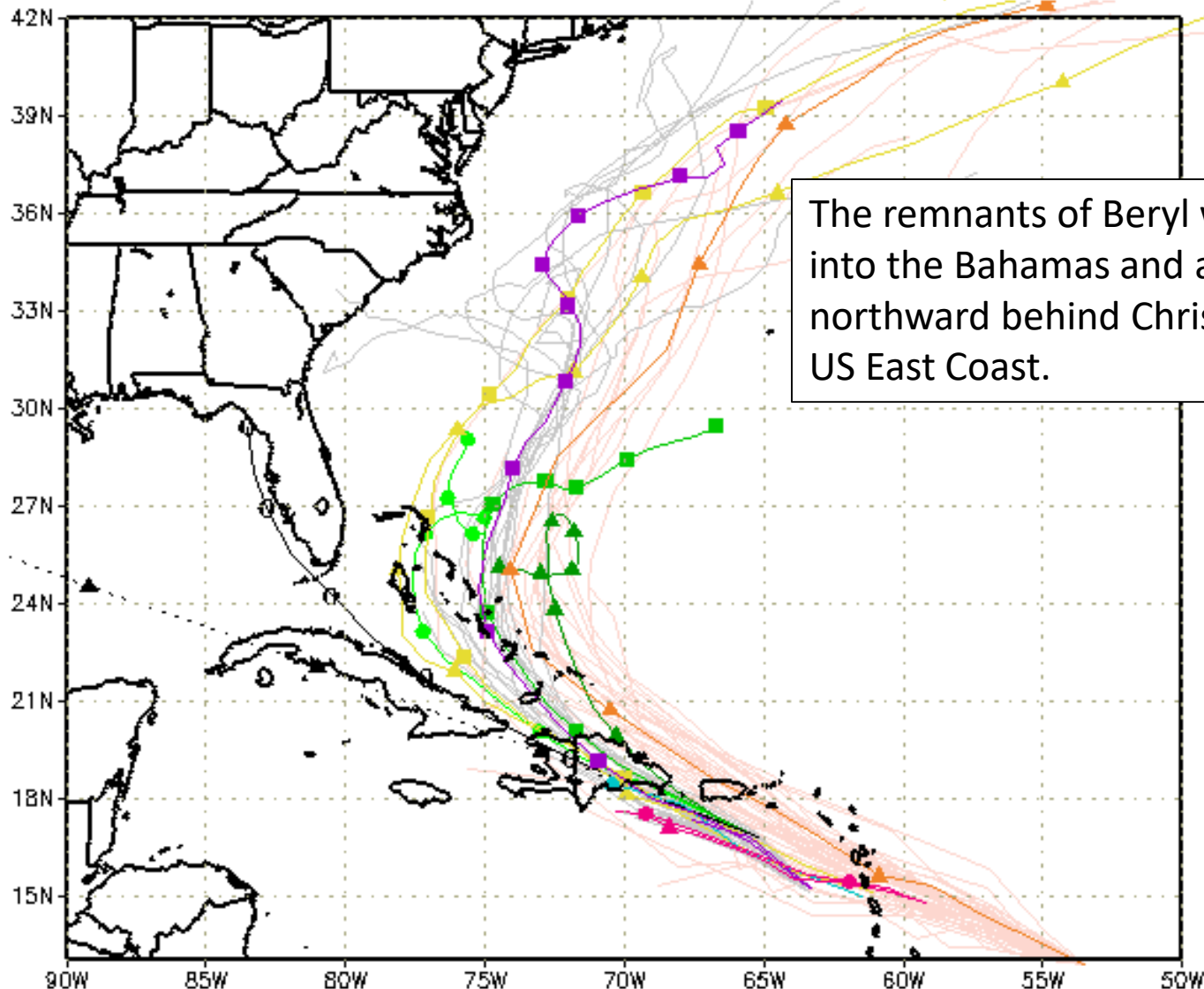
8:00 am EDT
Mon Jul 9 2018

Current Disturbances and Five-Day Cyclone Formation Chance: < 40% 40-60% > 60%

Tropical or Sub-Tropical Cyclone: Depression Storm Hurricane

Post-Tropical Cyclone or Remnants

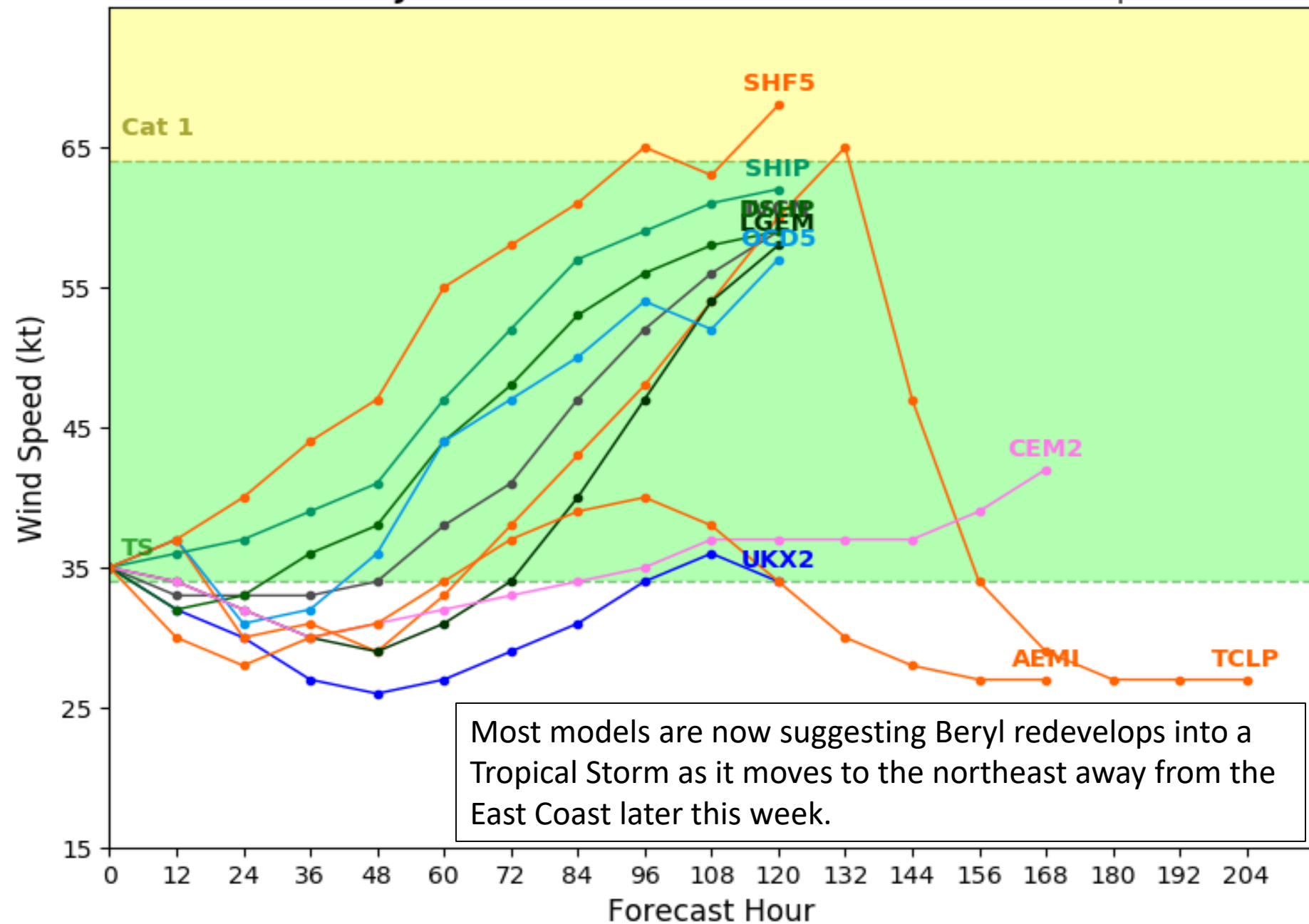
XTRP 09/1200Z TABD 09/1200Z HMON 08/1800Z AVNO 09/0600Z ECMF 08/0000Z
 CLP5 09/1200Z TABM 09/1200Z HWRF 08/1800Z AEMN 09/0600Z EEMN 08/0000Z
 TVCN 09/1200Z TABS 09/1200Z NVGM 09/0000Z APxx 09/0600Z EExx 08/0000Z
 NHC 09/0300Z UKM Not Avail COTC Not Avail CMC 09/0000Z GEMN 09/0000Z



Remnants of BERYL Model Intensity Guidance

Initialized at 12z Jul 09 2018

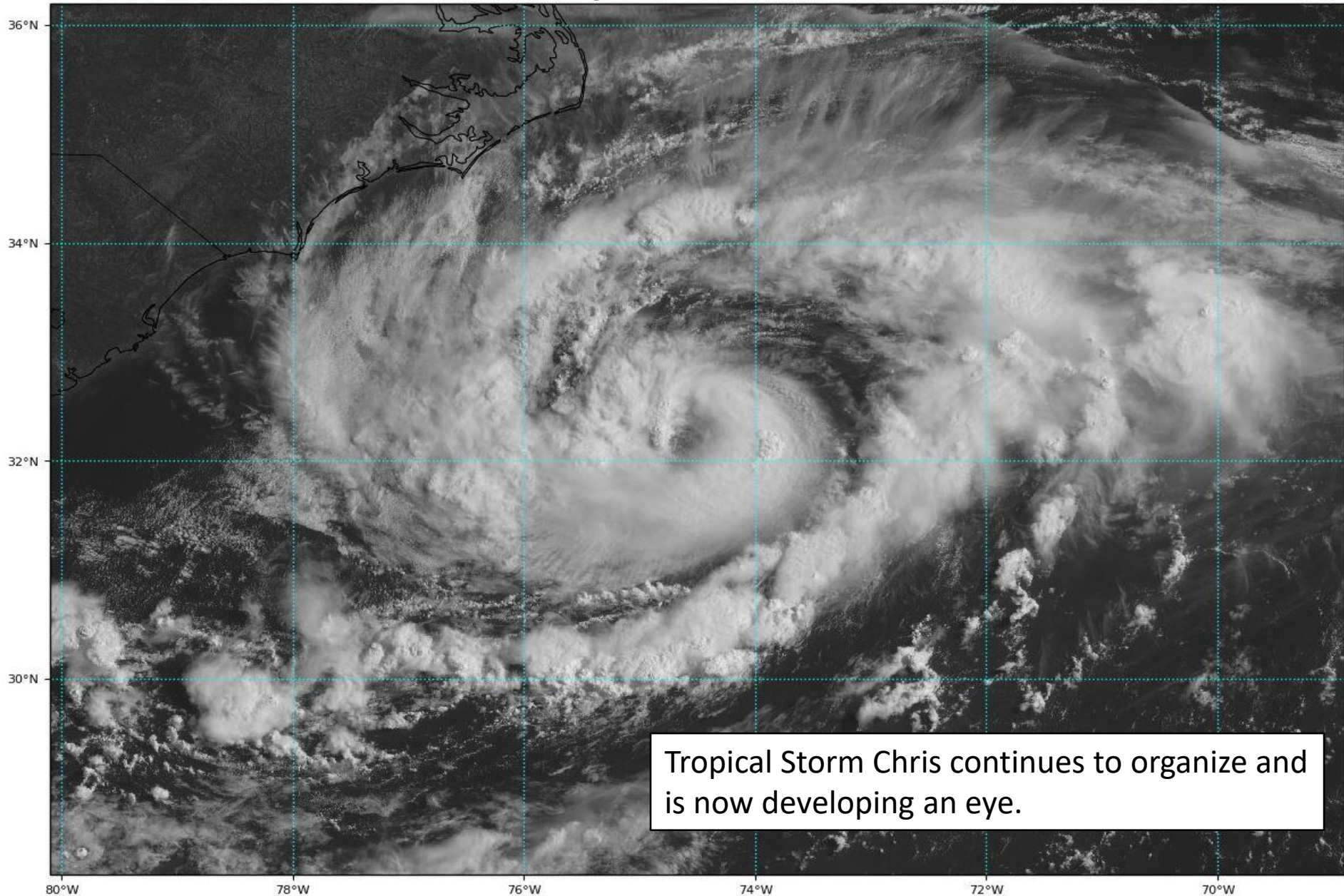
Levi Cowan - tropicaltidbits.com



Current Satellite – Tropical Storm Chris

GOES-16 Channel 2 (visible) Reflectance at 13:21Z Jul 09, 2018

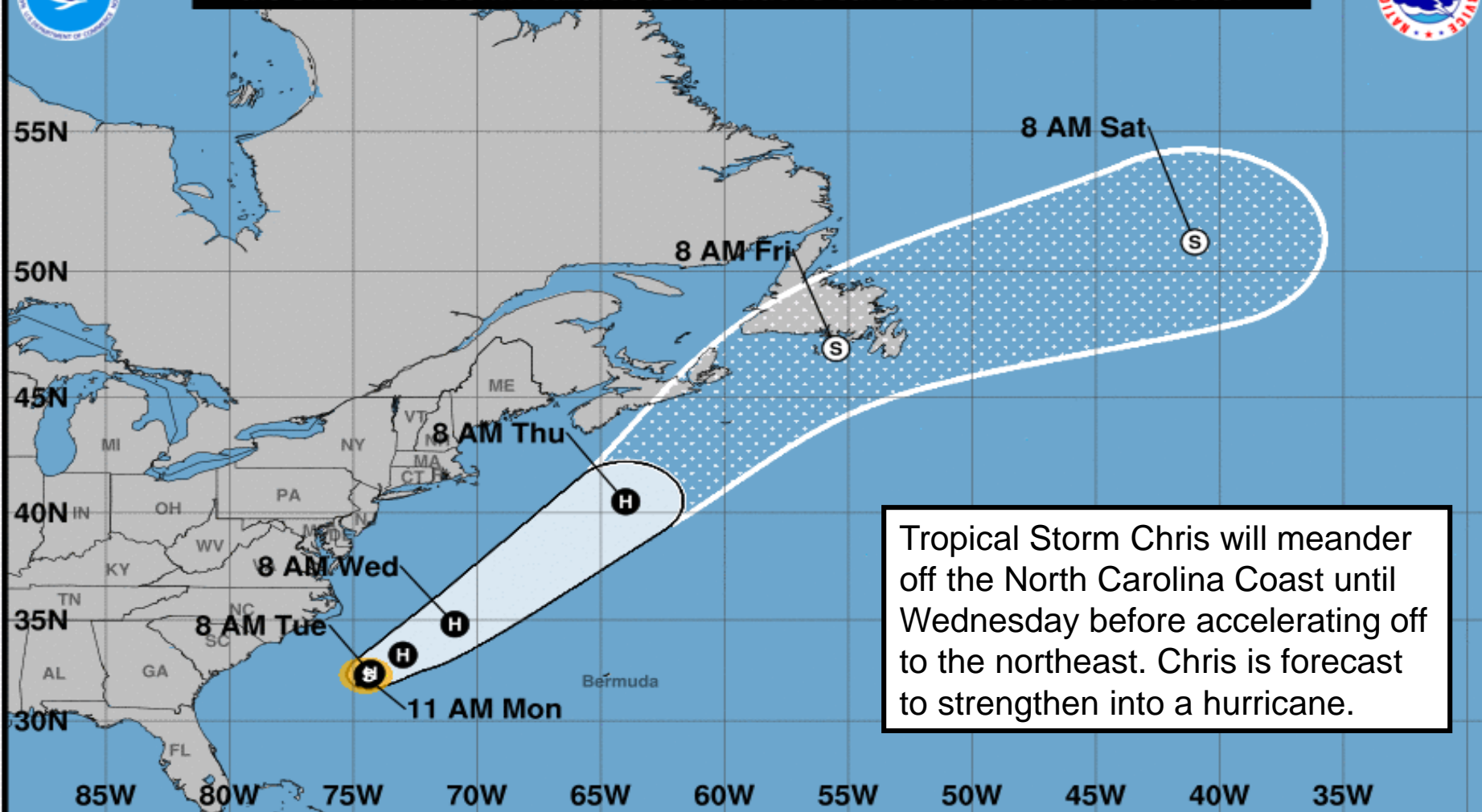
TROPICALTIDBITS.COM



Tropical Storm Chris continues to organize and is now developing an eye.



Note: The cone contains the probable path of the storm center but does not show the size of the storm. Hazardous conditions can occur outside of the cone.



Tropical Storm Chris

Monday July 09, 2018

11 AM EDT Advisory 12

NWS National Hurricane Center

Current information: x

Center location 32.2 N 74.5 W

Maximum sustained wind 60 mph

Movement: Stationary

Forecast positions:

● Tropical Cyclone ○ Post/Potential TC

Sustained winds: D < 39 mph

S 39-73 mph H 74-110 mph M > 110 mph

Potential track area:

Day 1-3 Day 4-5

Watches:

Hurricane Trop Stm

Warnings:

Hurricane Trop Stm

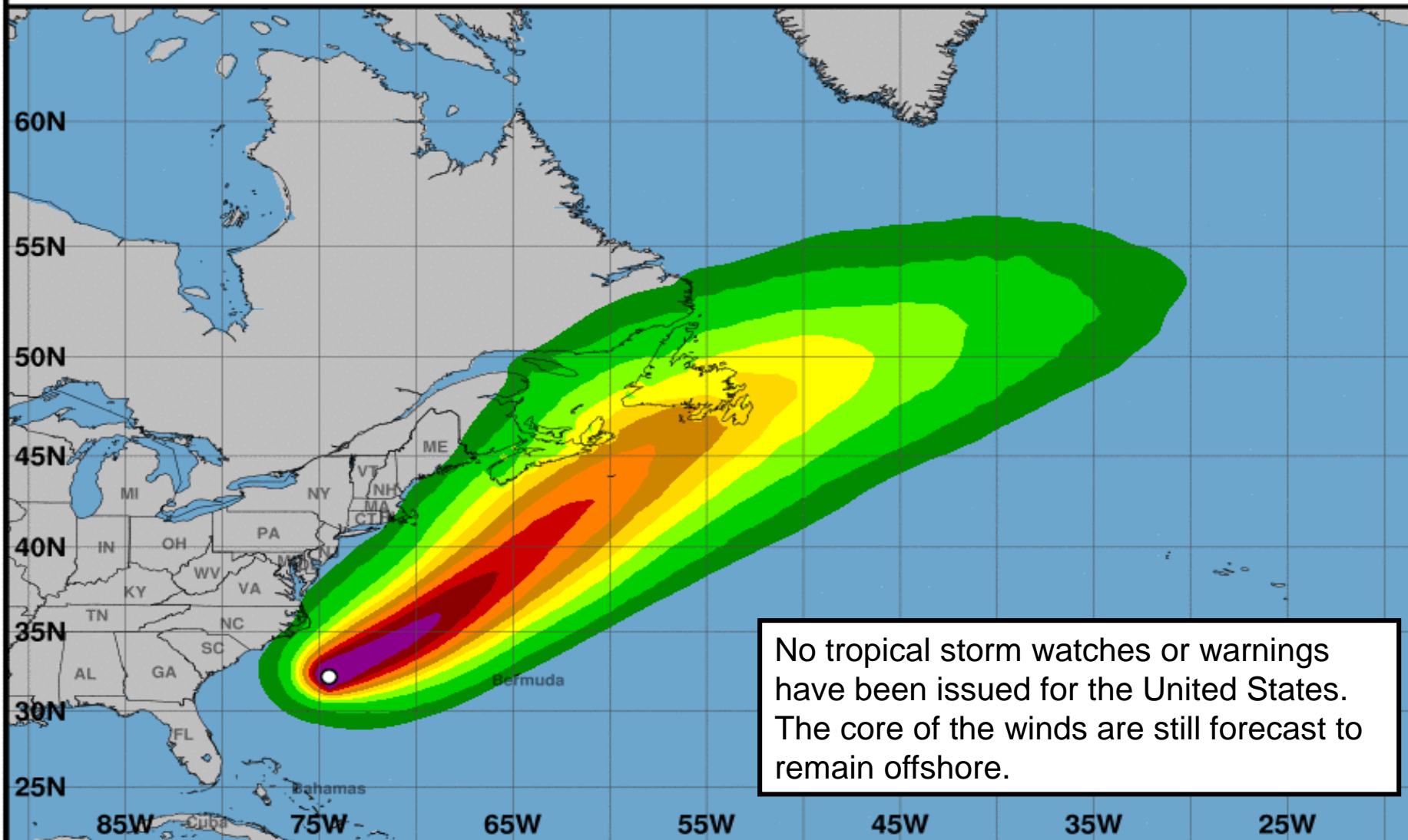
Current wind extent:

Hurricane Trop Stm



Tropical-Storm-Force Wind Speed Probabilities (Preliminary)

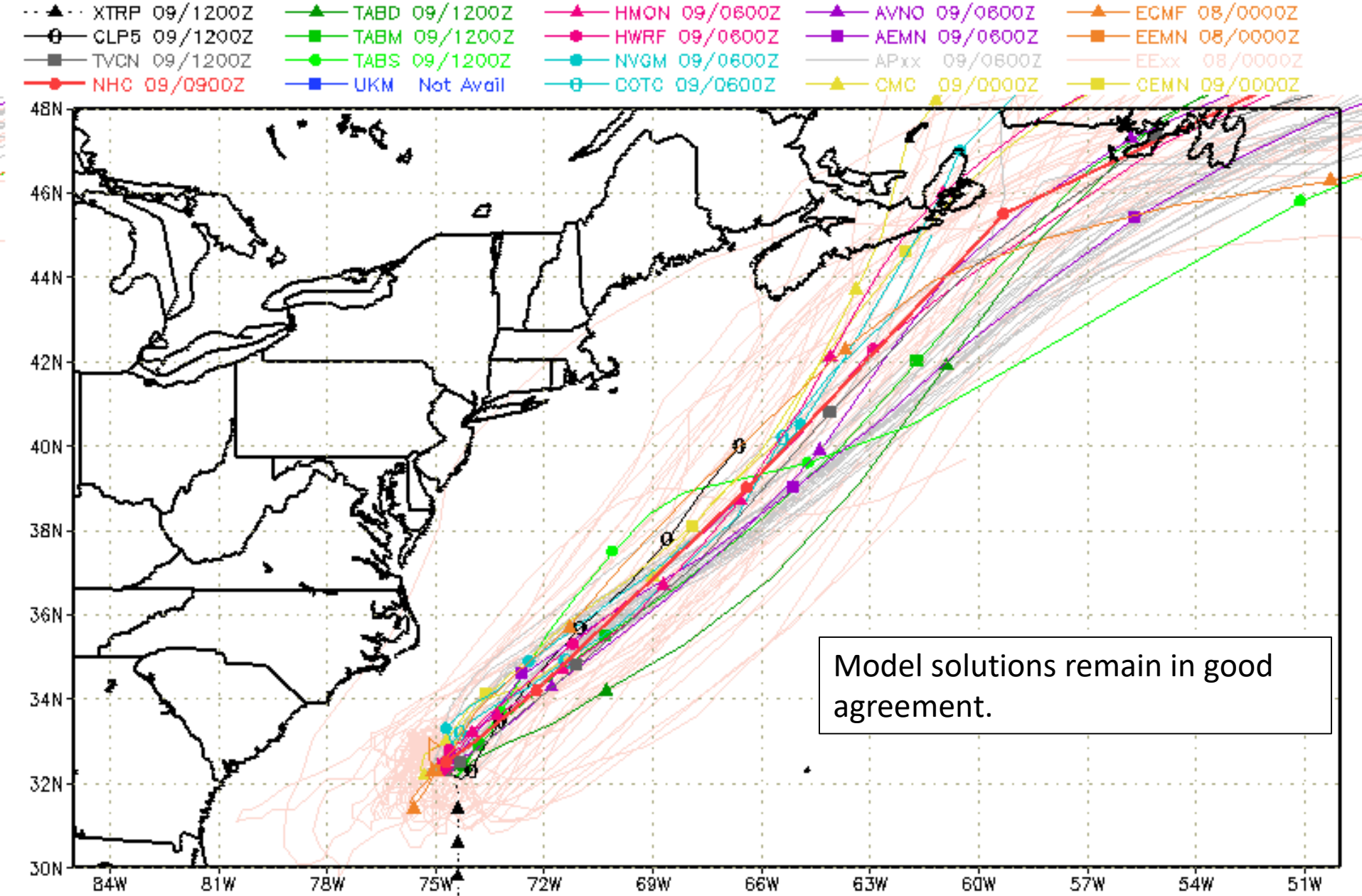
For the 120 hours (5.0 days) from 8 AM EDT MON JUL 09 to 8 AM EDT SAT JUL 14



No tropical storm watches or warnings have been issued for the United States. The core of the winds are still forecast to remain offshore.

Probability of tropical-storm-force winds (1-minute average ≥ 39 mph) from Tropical Storm Chris
O indicates Tropical Storm Chris center location at 8 AM EDT MON JUL 09, 2018 (Forecast/Advisory #12)





storm_03

sfwmd.gov

weather@sfwmd.gov

09-Jul 09:21EDT

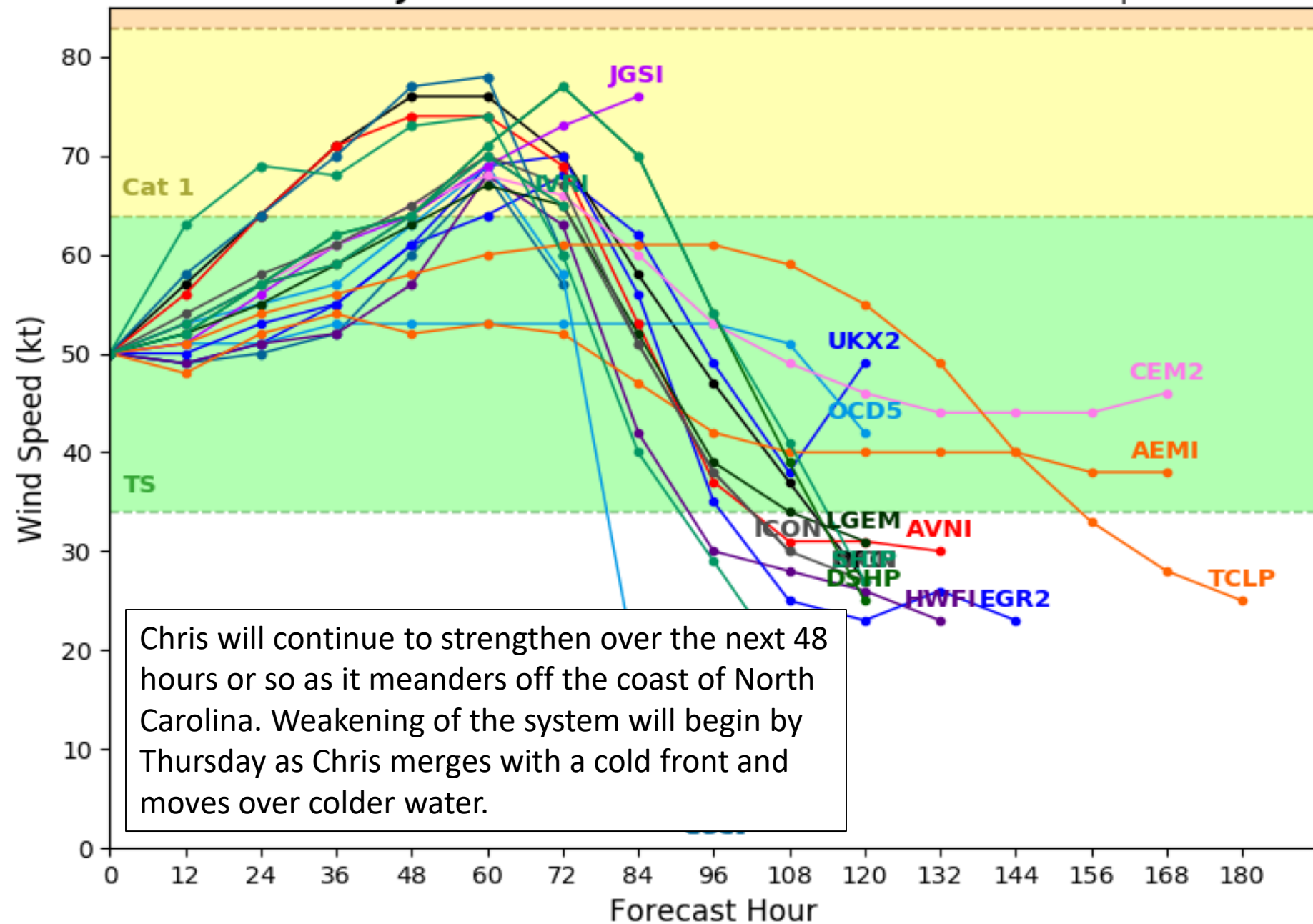
NHC Advisories and County Emergency Management Statements supersede this product.
 This graphic should complement, not replace, NHC discussions.
 If anything on this graphic causes confusion, ignore the entire product.
 For full info, see <http://my.sfwmd.gov/sfwmd/common/images/weather/plots.html>



Tropical Storm CHRIS Model Intensity Guidance

Initialized at 12z Jul 09 2018

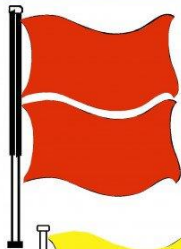
Levi Cowan - tropicaltidbits.com



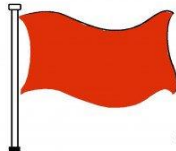


Rip Current Risk Today

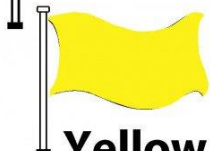
BEACH FLAG WARNING SYSTEM



Double Red
Water Closed to
Public Use



Red
High Hazard
(rough conditions,
such as strong surf
and or currents)



Yellow
Medium Hazard
(light surf and or
currents)



Green
Low Hazard
(calm conditions)



Purple
Marine Pest
(jellyfish, stingrays
& dangerous fish)

Summary

- The last advisory on Beryl was issued by the National Hurricane Center at 11pm last night.
- The remnants of Beryl will track through Puerto Rico and the USVI today and Hispaniola tonight. 2-4" of rainfall can be expected in scattered showers and thunderstorms along with some gusty winds (25-50 mph).
- Flash Flood Watches are in effect through this evening for all of Puerto Rico and the USVI.
- The remnants of Beryl will have a chance of redevelopment near the Bahamas or between the United States and Bermuda later this week as it tracks north and northeast.
- The NHC has given the odds of development over the next 48 hours near 0% (low), but 40% (medium) at days 3-5.
- As of 11am ET, Tropical Storm Chris was located about 215 miles south-southeast of Cape Hatteras, North Carolina and was stationary. Maximum sustained winds have increased to 60 mph. Tropical Storm force winds extend out 70 miles.
- Further strengthening is expected over the next 48 hours and Chris is expected to become a hurricane.
- By Wednesday, Chris will finally begin to accelerate to the northeast as a cold front approaches. The core of the winds and rain associated with Chris will remain well offshore of the United States.
- Hurricane Hunters will continue to investigate Chris regularly through Wednesday.

Florida Outlook:

- At this time, the remnants of Beryl and Tropical Storm Chris are not expected to directly impact Florida. However, Beryl should be monitored.
- As Tropical Storm Chris continues to strengthen, the rip current risk will increase along the East Coast of Florida, particularly from Martin County to the north. Wave heights will increase to 3-5' by Tuesday in Northeast Florida.

Another briefing packet will be issued this afternoon. For the latest information on the tropics, please visit the National Hurricane Center website at www.hurricanes.gov.



TROPICAL UPDATE

Created by:

Michael Spagnolo, Deputy State Meteorologist
michael.spagnolo@em.myflorida.com

State Meteorological Support Unit
Florida Division of Emergency
Management

Users wishing to subscribe (approval pending) to this distribution list, register at https://public.govdelivery.com/accounts/FLDEM/subscriber/new?topic_id=SERT_Met_Tropics.

Other reports available for subscription are available at <https://public.govdelivery.com/accounts/FLDEM/subscriber/new?preferences=true>