



TROPICAL UPDATE

11 AM EDT

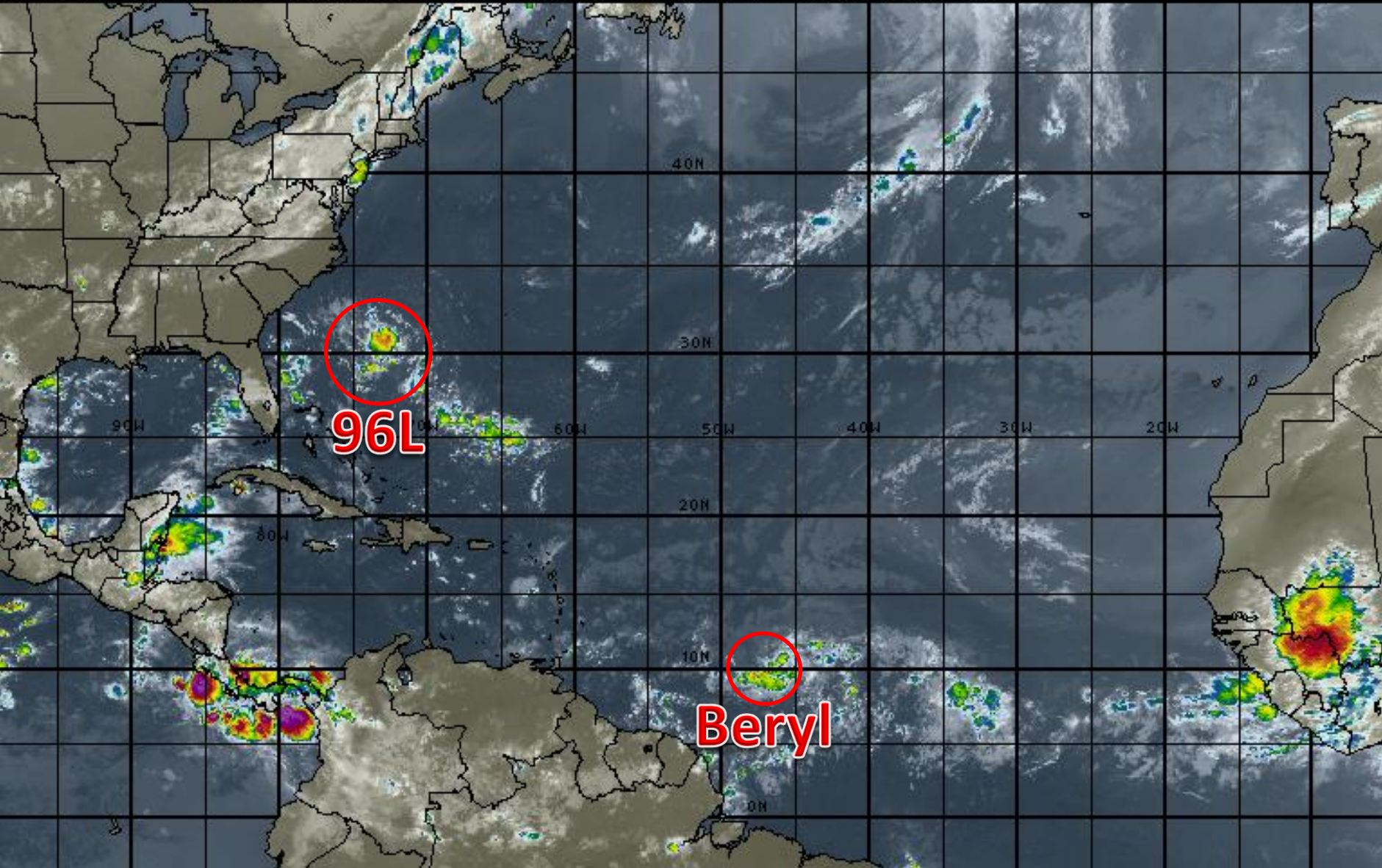
Friday, July 6, 2018

Hurricane Beryl, Invest 96L (80%)

This update is intended for government and emergency response officials, and is provided for informational and situational awareness purposes only. Forecast conditions are subject to change based on a variety of environmental factors. For additional information, or for any life safety concerns with an active weather event please contact your County Emergency Management or Public Safety Office, local National Weather Service forecast office or visit the National Hurricane Center website at www.nhc.noaa.gov.

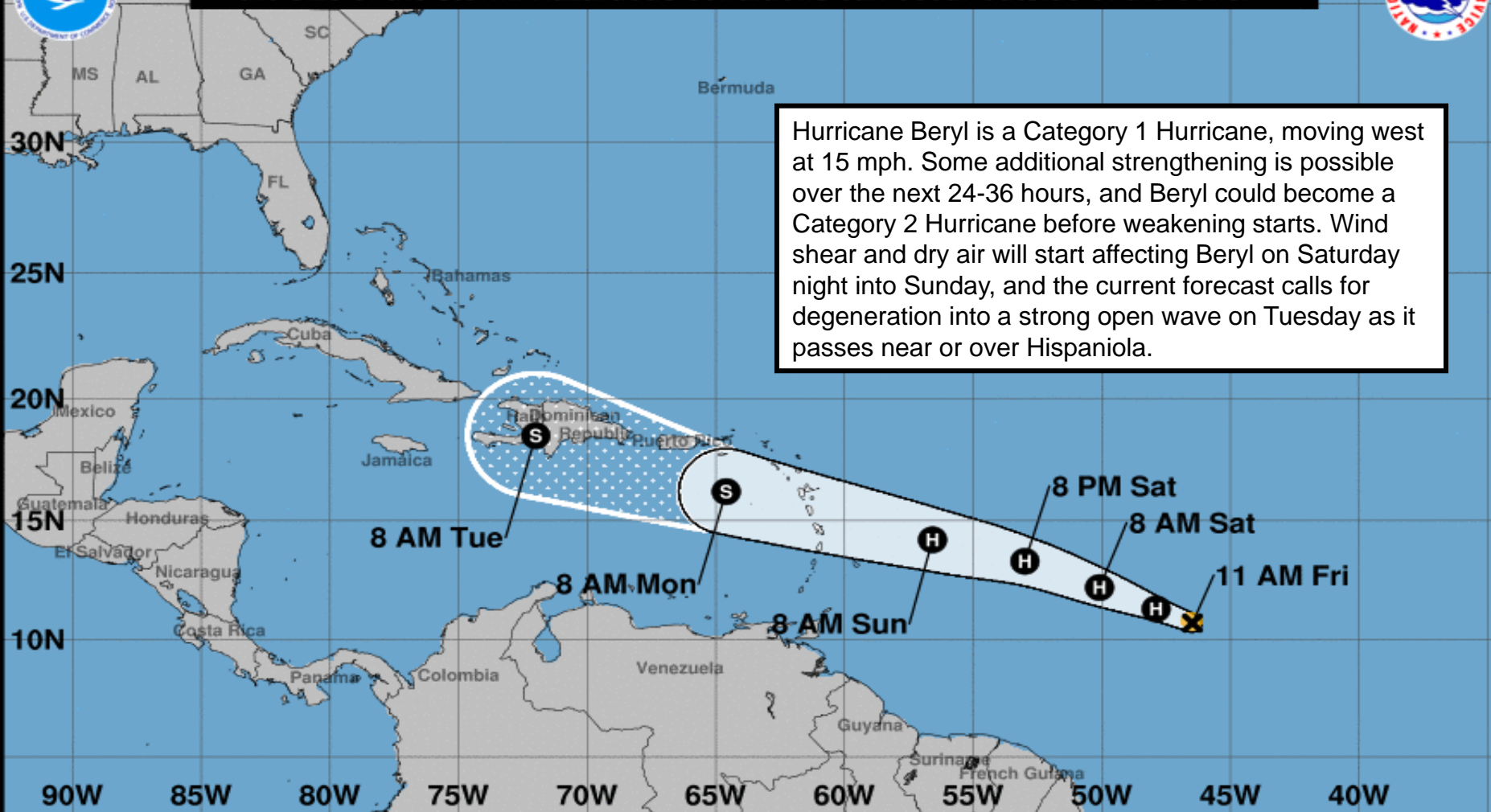
Atlantic Basin Satellite Image

12:00 06-JUL-2018 GMT Copyright © 1998-2018 WSI Corporation <http://www.wsi.com>





Note: The cone contains the probable path of the storm center but does not show the size of the storm. Hazardous conditions can occur outside of the cone.



Hurricane Beryl

Friday July 06, 2018

11 AM AST Advisory 5

NWS National Hurricane Center

Current information: x

Center location 10.7 N 46.5 W

Maximum sustained wind 80 mph

Movement W at 15 mph

Forecast positions:

● Tropical Cyclone ○ Post/Potential TC

Sustained winds: D < 39 mph

S 39-73 mph H 74-110 mph M > 110 mph

Potential track area:

Day 1-3 Day 4-5

Watches:

Hurricane Trop Stm

Warnings:

Hurricane Trop Stm

Current wind extent:

Hurricane Trop Stm



Five-Day Graphical Tropical Weather Outlook

National Hurricane Center Miami, Florida



www.hurricanes.gov

Disturbance 1

8:00 am EDT
Fri Jul 6 2018

100W 90W 80W 70W 60W 50W 40W 30W 20W

45N

35N

25N

15N

5N



1
(80%)

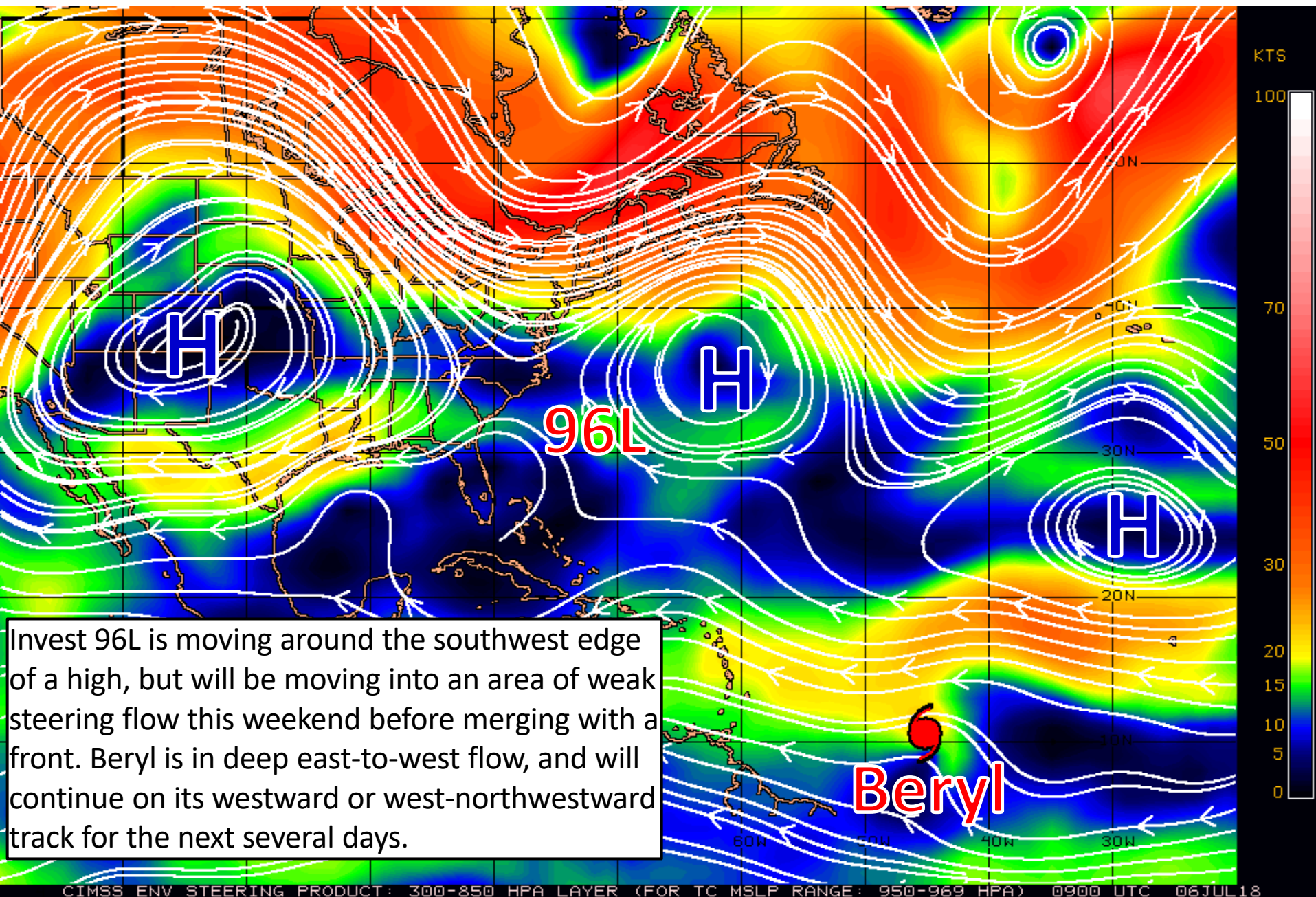
1. Showers and thunderstorms are increasing in association with a well-defined low pressure system located a few hundred miles southeast of the North Carolina coast. Environmental conditions are expected to be conducive for additional development of this system, and a tropical depression is likely to form over the next couple of days while the system moves slowly northwestward and stalls or meanders near the coast of North Carolina over the weekend. Interests along the North Carolina and South Carolina coasts should monitor the progress of this system during the next several days.
 - Formation chance through 48 hours...high...70 percent.
 - Formation chance through 5 days...high...80 percent.

Current Disturbances and Five-Day Cyclone Formation Chance: < 40% 40-60% > 60%

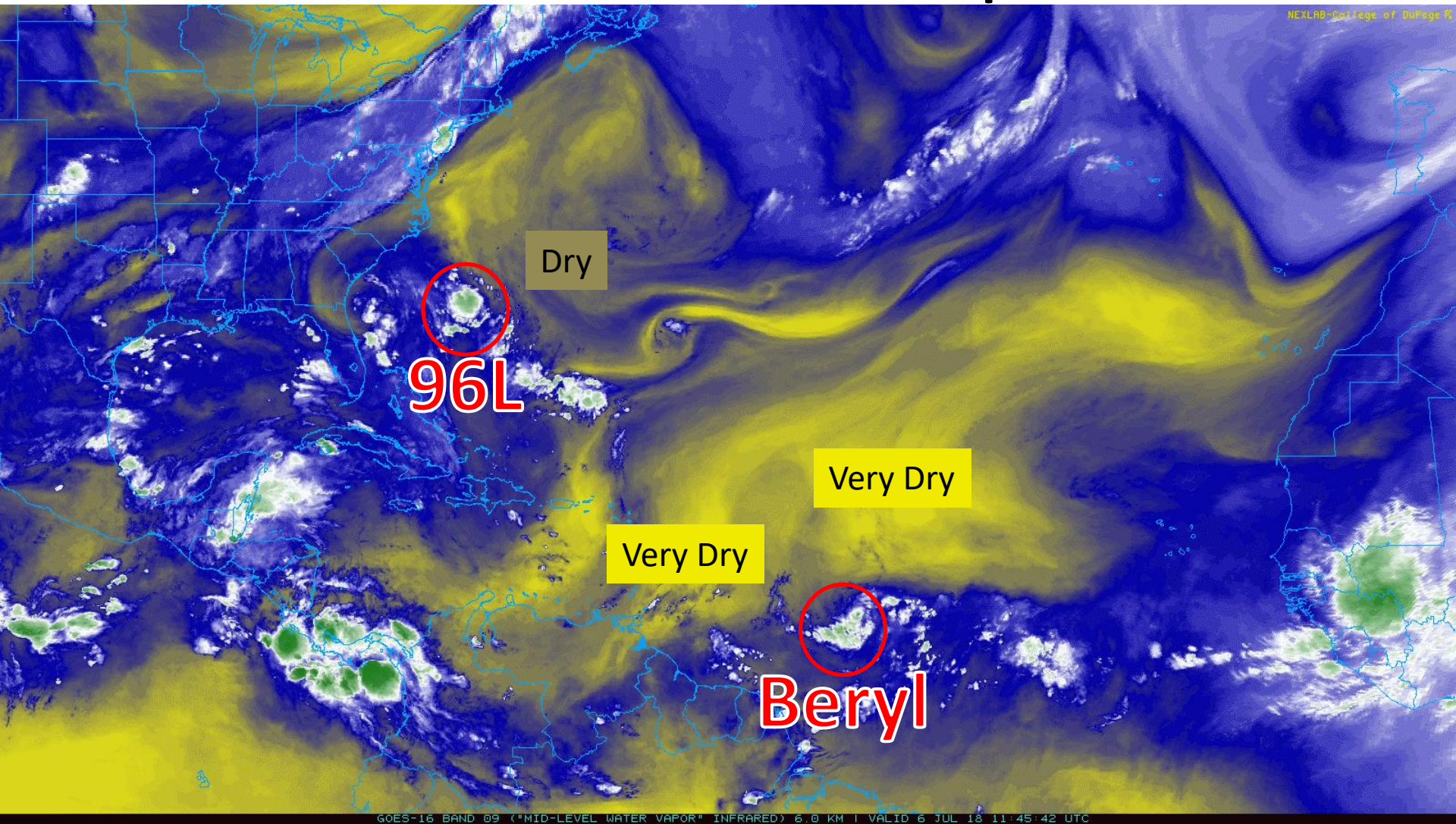
Tropical or Sub-Tropical Cyclone: Depression Storm Hurricane

Post-Tropical Cyclone or Remnants

Steering Currents

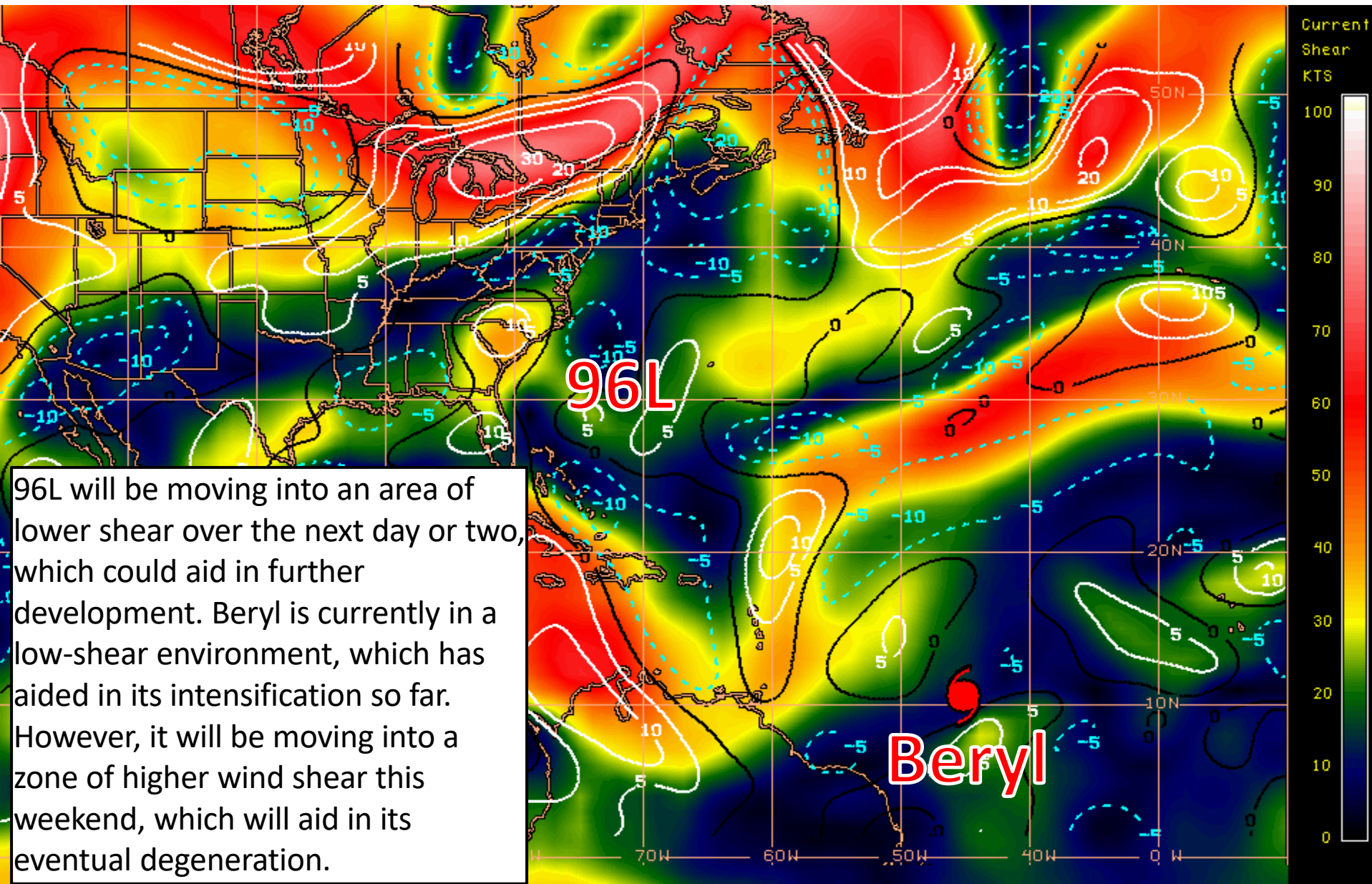


Current Water Vapor



96L has some dry air to its northeast, but it is in a relatively favorable location for further development. Beryl is moving into some significantly drier air, which will help to weaken it this weekend.

Current Wind Shear (shaded) and Shear Tendency (lines)



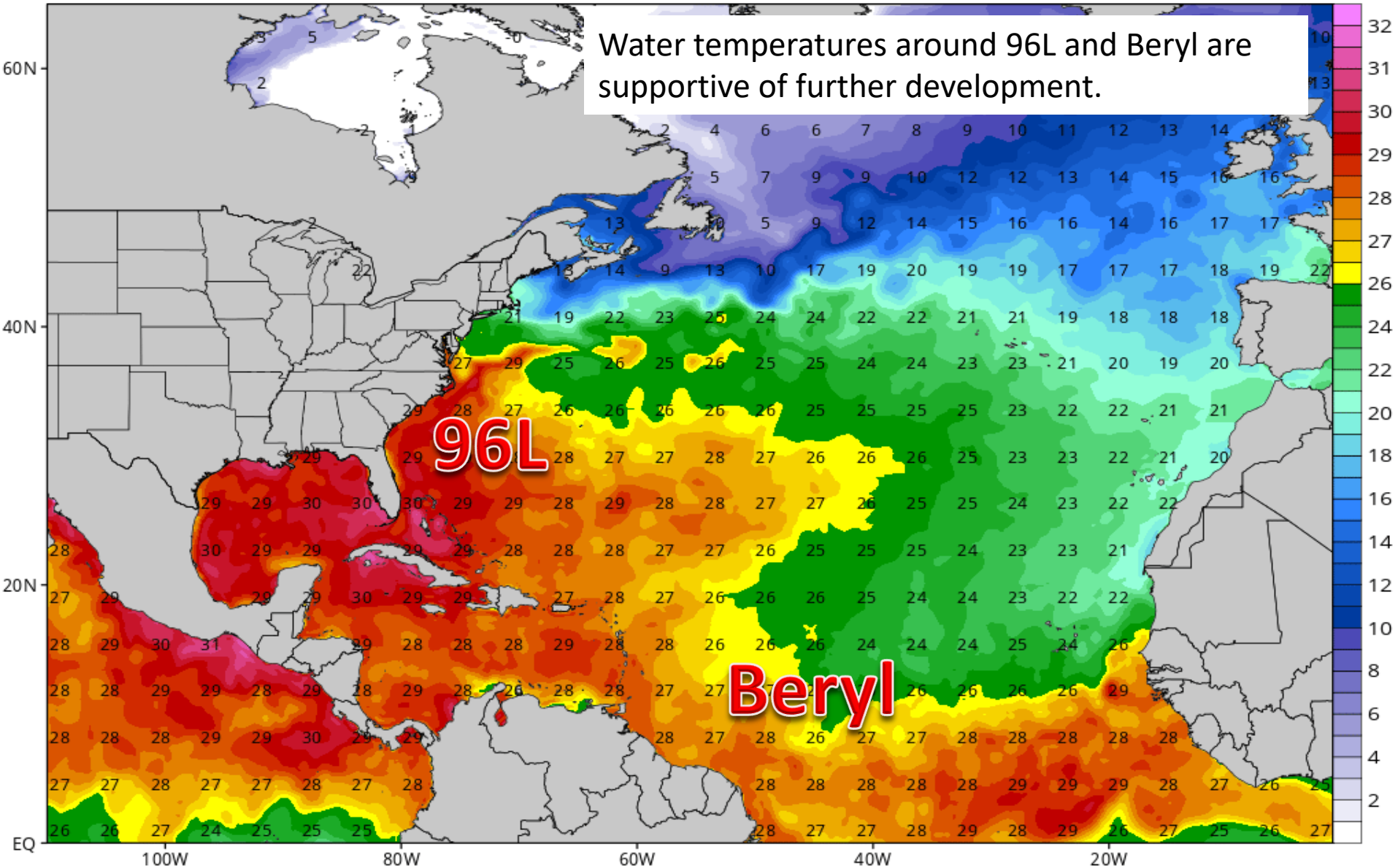
Shear Tendency (KTS) Over Past 24 Hours: Increasing — Decreasing ----

Water Temperatures

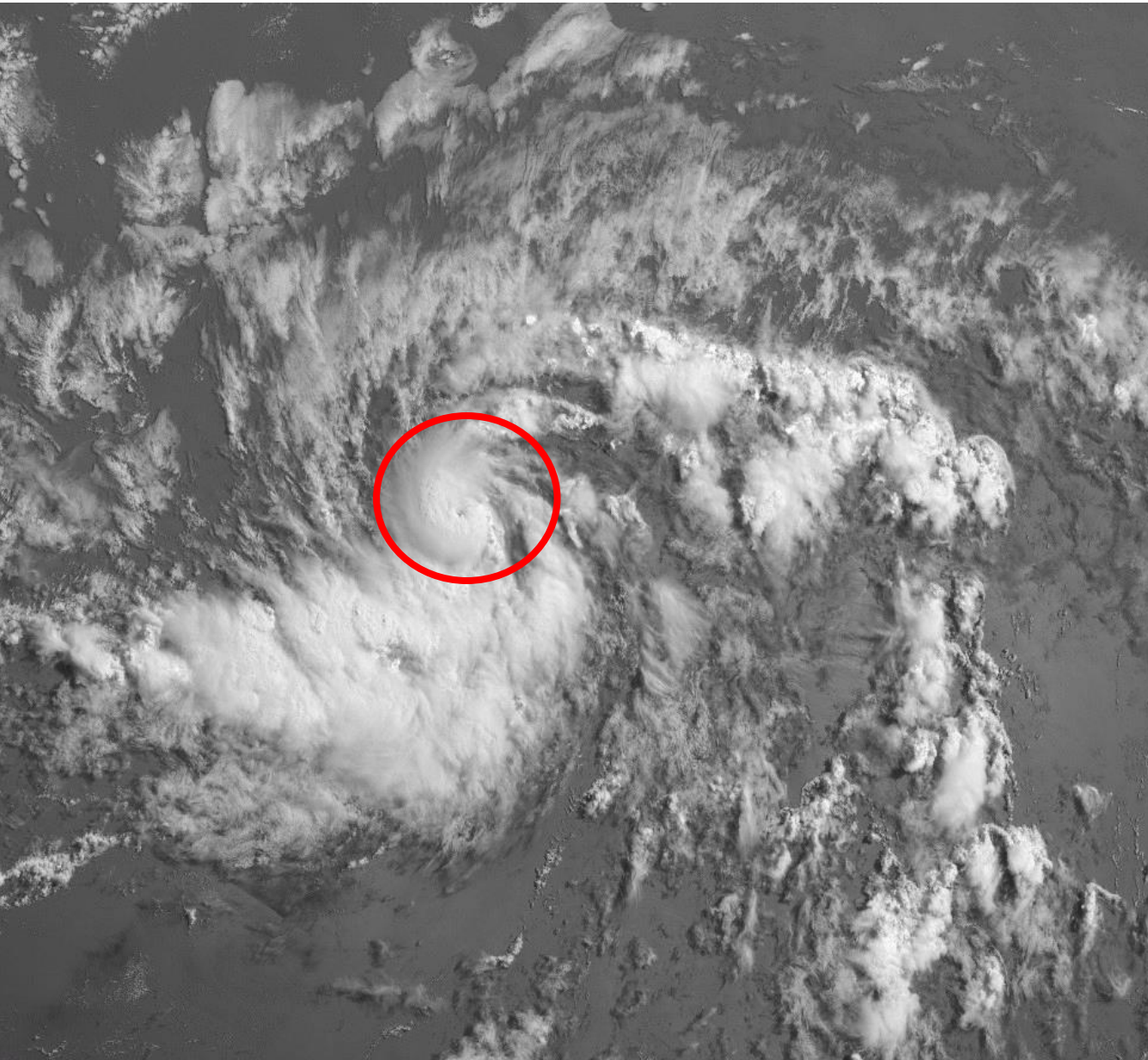
CDAS Sea Surface Temperature (°C)

Analysis Time: 00z Jul 06 2018

TROPICALTIDBITS.COM



Current Satellite – Hurricane Beryl



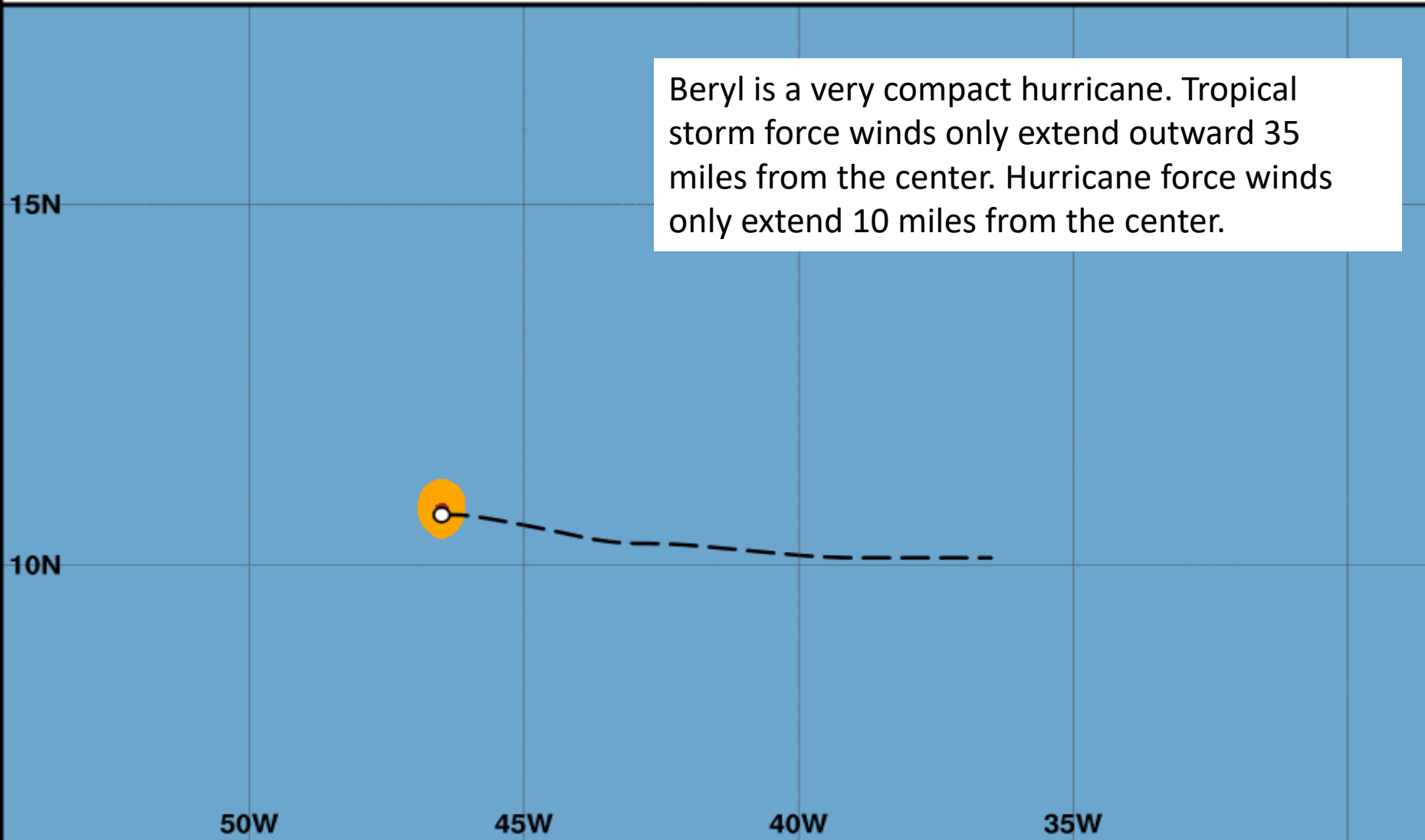
Beryl became the first hurricane of the 2018 Atlantic Hurricane Season at 5 AM EDT today. Maximum sustained winds are near 80 mph. Beryl is a very tiny hurricane, which can lead to rapid fluctuations in intensity, both up and down. Thus, the intensity forecast is more uncertain than normal. However, weakening is forecast once Beryl reaches the Caribbean, and it could dissipate when it reaches Hispaniola.



Surface Wind Field of Hurricane Beryl

Sustained Winds as of 1100 AM AST Fri Jul 06, 2018

Advisory Number 5



Watches:

- Hurricane Watch
- Tropical Storm Watch

Warnings:

- Hurricane Warning
- Tropical Storm Warning

Sustained Winds:

- Hurricane Force
- Tropical Storm Force

Position:

- Center as of 1100 AM AST
- Past Track

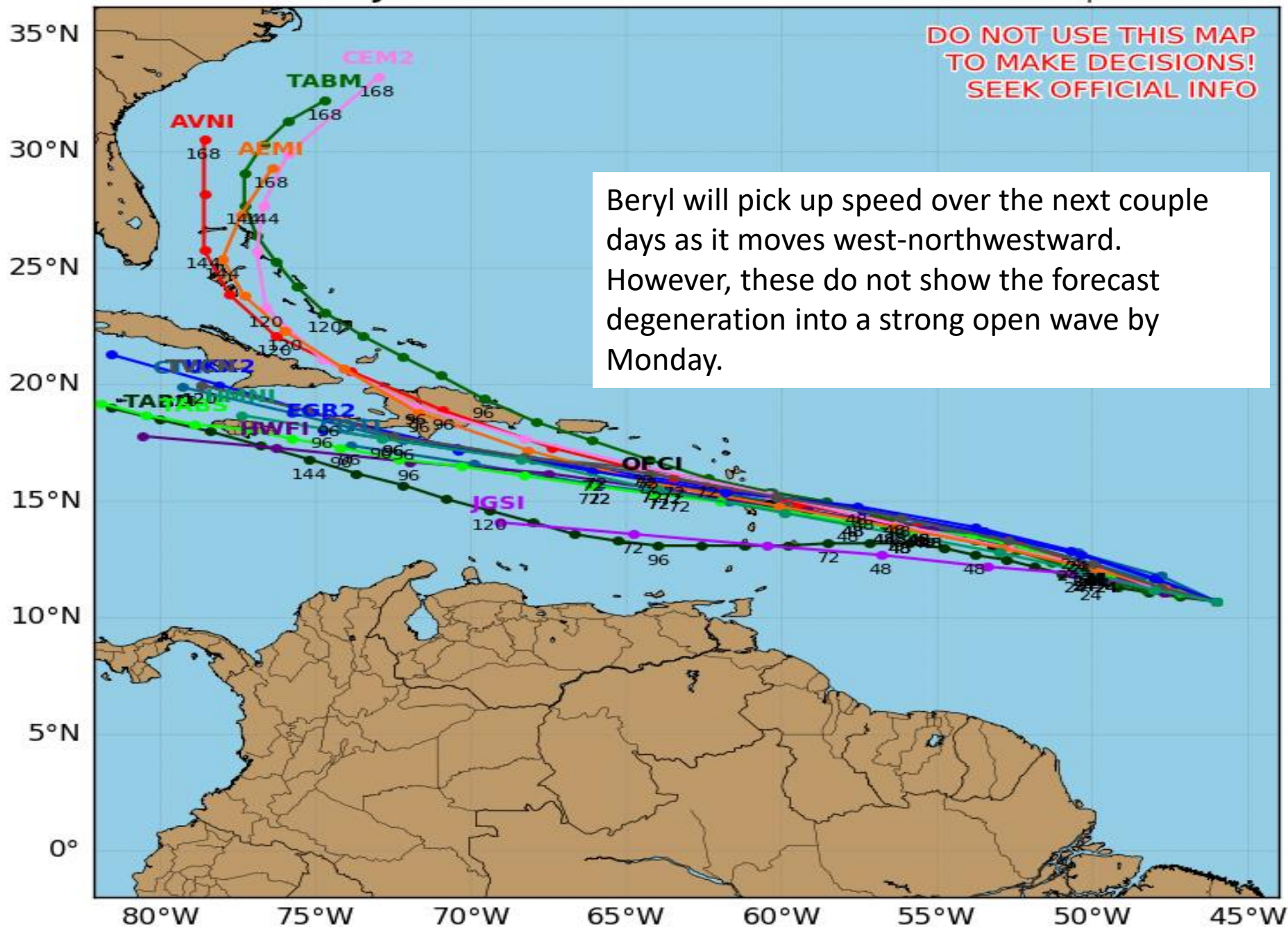
Hurricane BERYL Model Track Guidance

Initialized at 12z Jul 06 2018

Levi Cowan - tropicaltidbits.com

**DO NOT USE THIS MAP
TO MAKE DECISIONS!
SEEK OFFICIAL INFO**

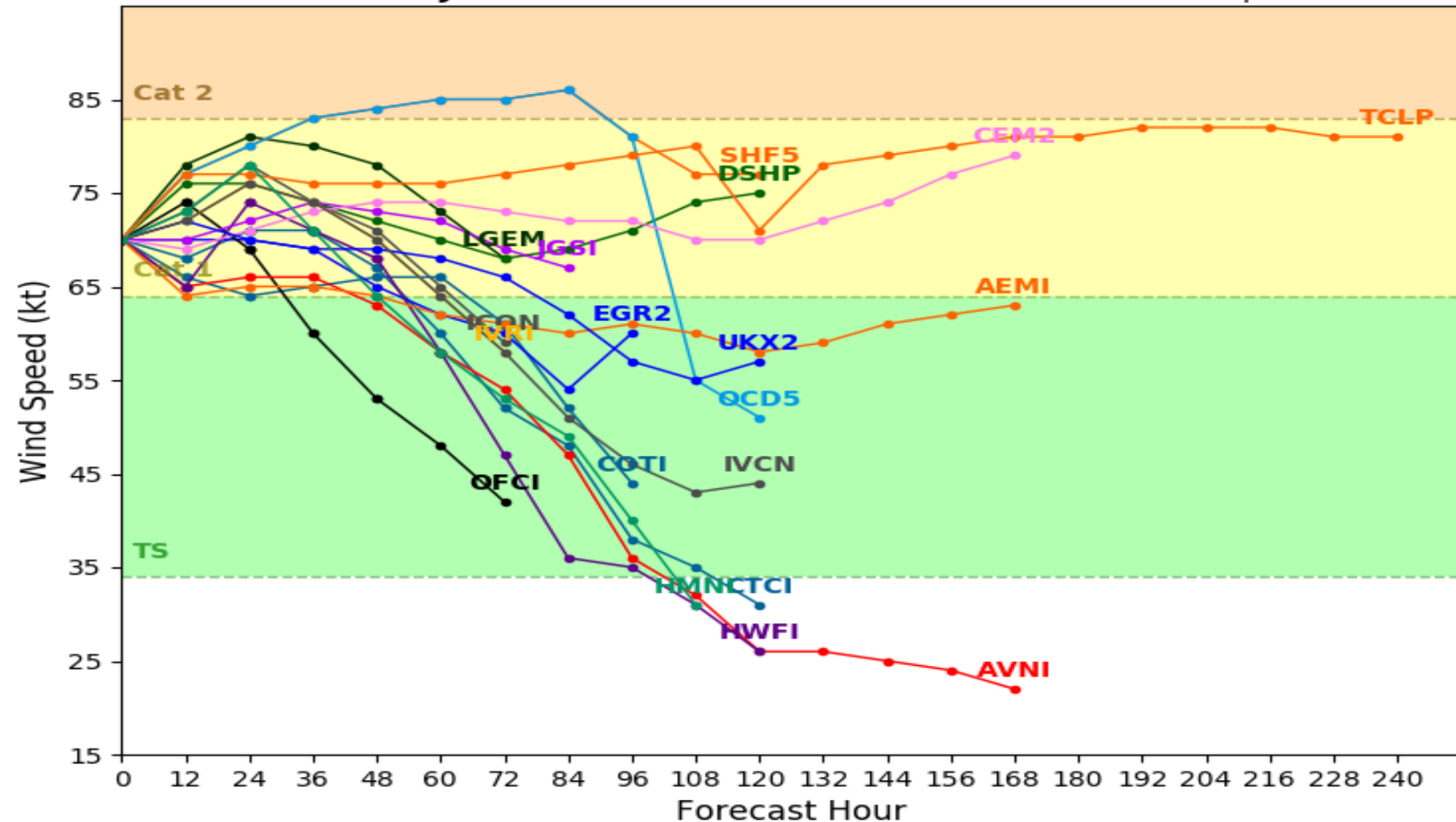
Beryl will pick up speed over the next couple days as it moves west-northwestward. However, these do not show the forecast degeneration into a strong open wave by Monday.



Hurricane BERYL Model Intensity Guidance

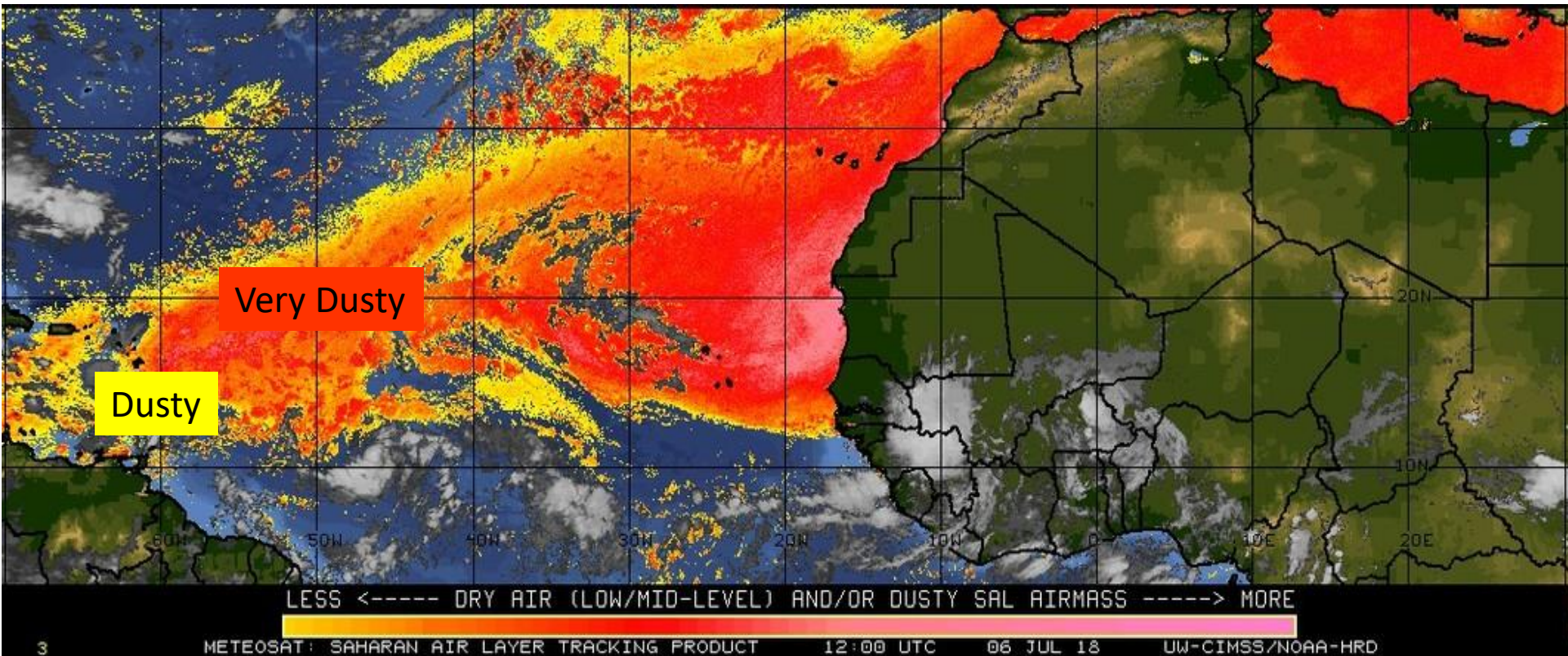
Initialized at 12z Jul 06 2018

Levi Cowan - tropicaltidbits.com



Most forecast models show Beryl weakening into this weekend as it loses its organization. The statistical models, which do not account for atmospheric conditions, keep it as a hurricane. However, the dynamical models, which account for wind shear and dry air, weaken Beryl. Winds may still stay at tropical storm force even after degenerating into an open wave.

Saharan Air Layer



Saharan dust is looming on the north side of Beryl, but it is fending off the dust for now. As Beryl moves west-northwestward, it will move into an area with more dust, which will help weaken the hurricane this weekend.

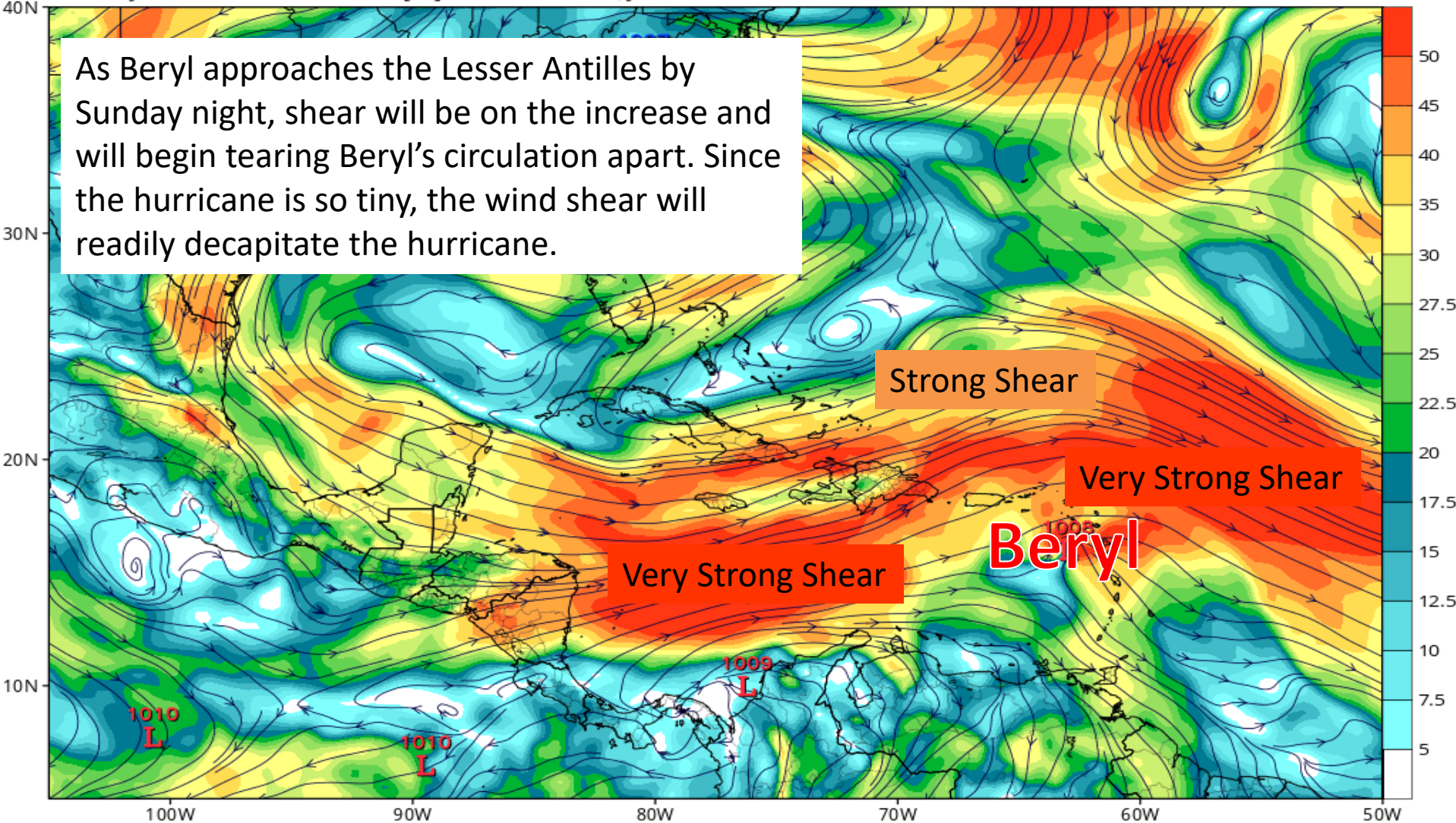
Wind Shear Forecast – Monday AM

GFS 200mb-850mb Wind Shear (knots) & Low Centers (mb)

Init: 06z Jul 06 2018 Forecast Hour: [78] valid at 12z Mon, Jul 09 2018

TROPICALTIDBITS.COM

As Beryl approaches the Lesser Antilles by Sunday night, shear will be on the increase and will begin tearing Beryl's circulation apart. Since the hurricane is so tiny, the wind shear will readily decapitate the hurricane.

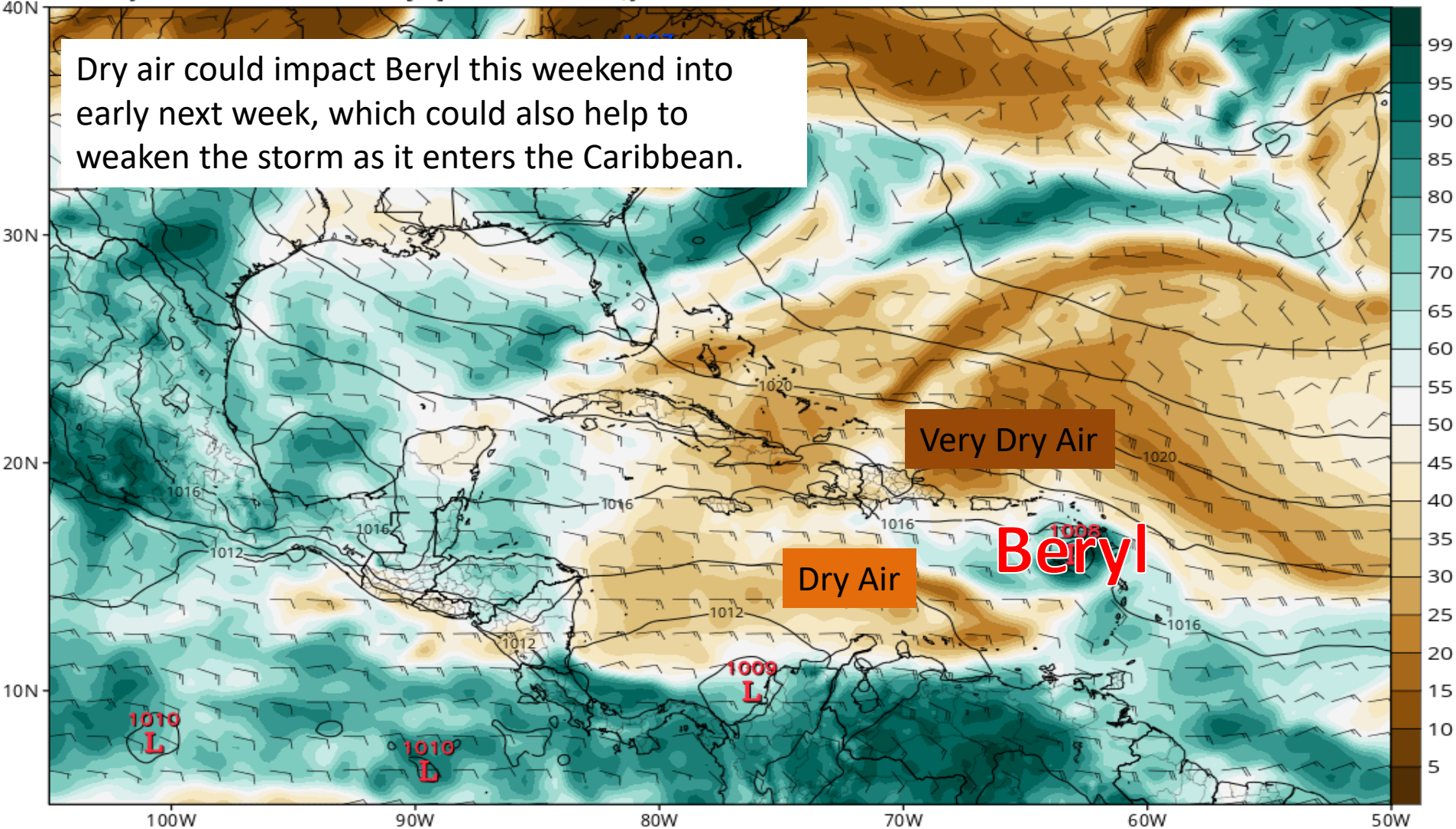


Mid-Level Moisture Forecast – Sun. PM

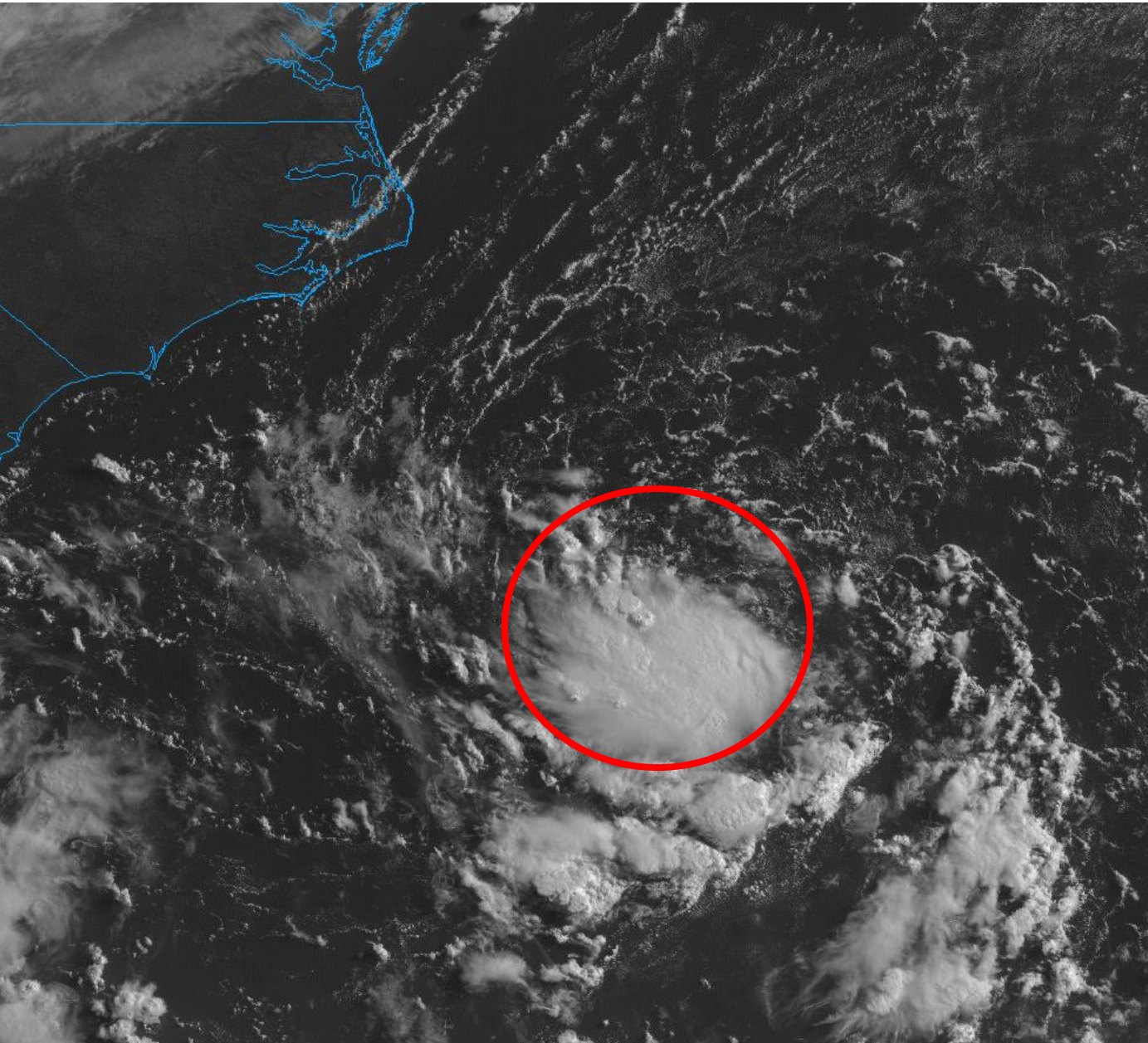
GFS MSLP (mb), 700-400 hPa Relative Humidity (%), and 700-400 hPa Wind (kt)

Init: 06z Jul 06 2018 Forecast Hour: [78] valid at 12z Mon, Jul 09 2018

TROPICALTIDBITS.COM



Current Satellite – Invest 96L



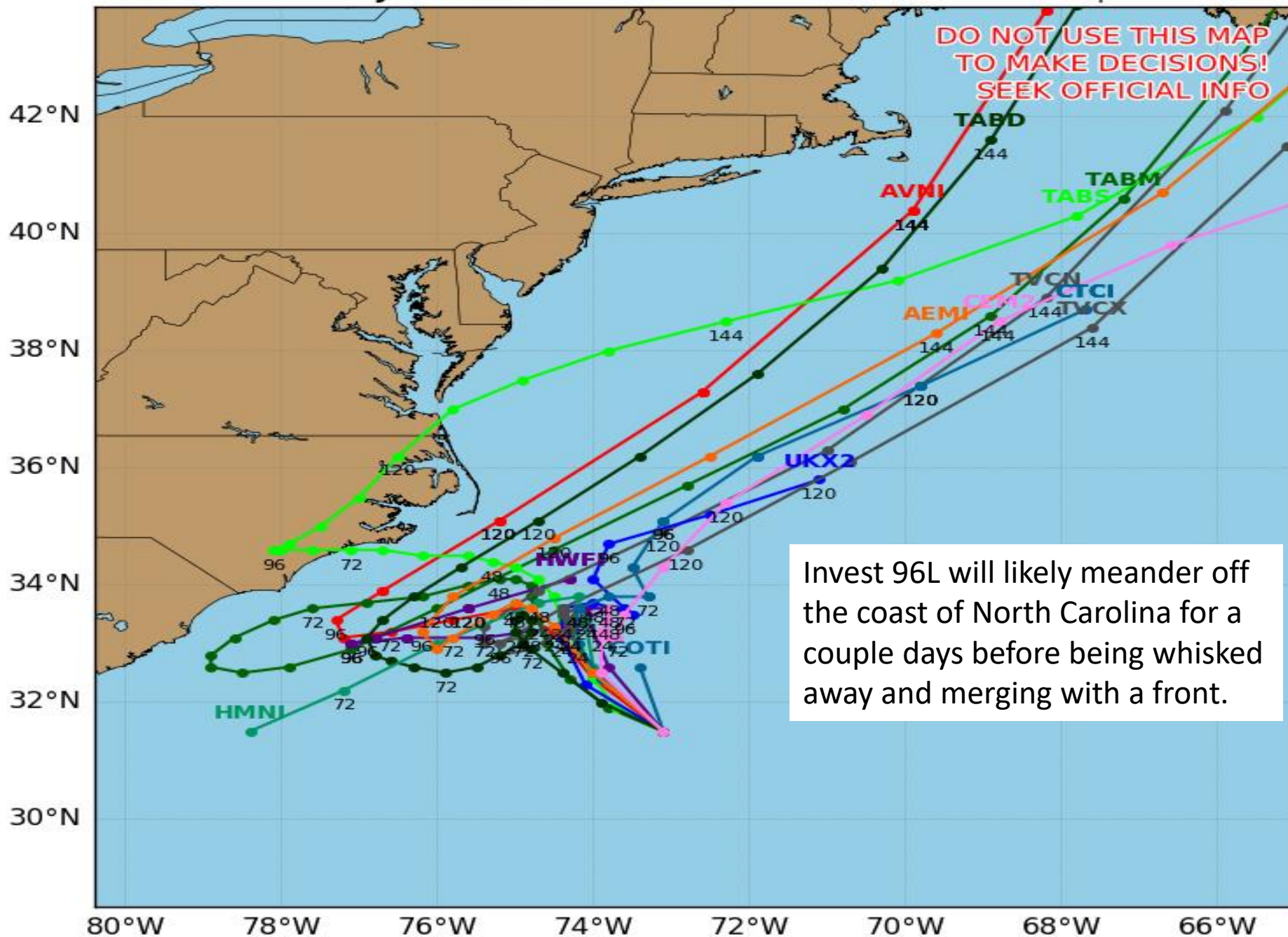
Compared to yesterday, Invest 96L has become better organized and has more showers and thunderstorms near the center. It is currently in a favorable environment for further development, and a tropical depression could form at any time over the next couple days. It will stall near the North Carolina coast this weekend before merging with a front next week.

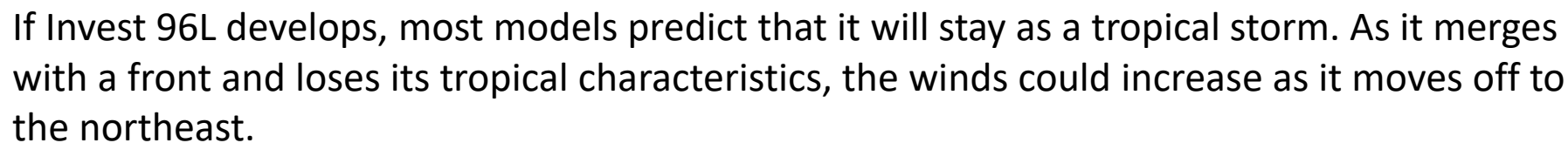
Invest 96L Model Track Guidance

Initialized at 12z Jul 06 2018

Levi Cowan - tropicaltidbits.com

DO NOT USE THIS MAP
TO MAKE DECISIONS!
SEEK OFFICIAL INFO



Levi Cowan - tropicaltidbits.com

Summary

- Hurricane Beryl is located about 1,000 miles east of the Lesser Antilles, moving west at 15 mph.
- Beryl is currently a Category 1 Hurricane with maximum sustained winds of 80 mph.
- Additional strengthening is forecast for the next 24-36 hours, and Beryl could become a Category 2 Hurricane later today or Saturday.
- Beryl may maintain hurricane intensity as it approaches the Lesser Antilles, but it will begin weakening shortly after reaching the Caribbean.
- The forecast has been updated to show that Beryl may not degenerate into an open wave until it passes near or over Hispaniola on Tuesday.
- Heavy rains and gusty winds are possible for parts of Puerto Rico and Hispaniola Monday and Tuesday. However, exactly how much rain and wind greatly depend on track and future intensity.
- Beryl is a very small hurricane, and any impacts to Caribbean islands would greatly depend on its exact track
- Invest 96L off the coast of North Carolina could become a tropical depression at any time over the next couple of days.
- 96L will likely meander near the coast of North Carolina through the weekend before being whisked away by a front.
- If 96L develops, it will likely only reach tropical storm intensity before it merges with a front. However, there is still some uncertainty in that forecast.

Florida Outlook:

- Some moisture from Beryl may make it to South Florida by Thursday or Friday next week, slightly enhancing the afternoon showers and thunderstorms. However, uncertainty in this scenario is still very high and will need to be monitored.

Another briefing packet will be issued tomorrow morning with the next update from the National Hurricane Center. For the latest information on the tropics, please visit the National Hurricane Center website at www.hurricanes.gov



TROPICAL UPDATE

Created by:

Cameron Young, Assistant State Meteorologist

cameron.young@em.myflorida.com

State Meteorological Support Unit

Florida Division of Emergency
Management

Users wishing to subscribe (approval pending) to this distribution list, register at https://public.govdelivery.com/accounts/FLDEM/subscriber/new?topic_id=SERT_Met_Tropics.

Other reports available for subscription are available at

<https://public.govdelivery.com/accounts/FLDEM/subscriber/new?preferences=true>