



TROPICAL UPDATE

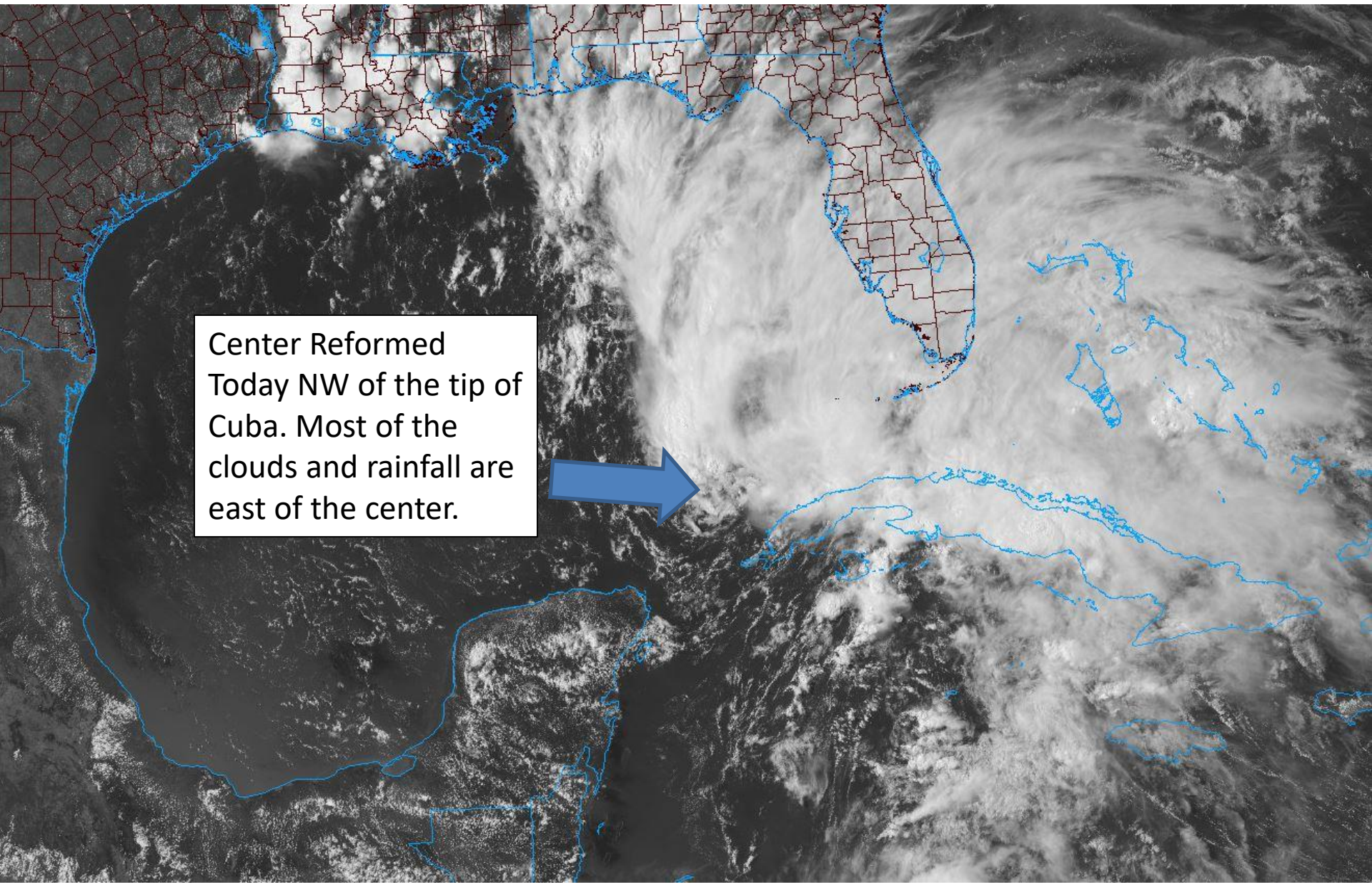
5 PM EDT

Saturday, May 26, 2018

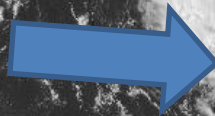
Sub-Tropical Storm Alberto

This update is intended for government and emergency response officials, and is provided for informational and situational awareness purposes only. Forecast conditions are subject to change based on a variety of environmental factors. For additional information, or for any life safety concerns with an active weather event please contact your County Emergency Management or Public Safety Office, local National Weather Service forecast office or visit the National Hurricane Center website at www.nhc.noaa.gov.

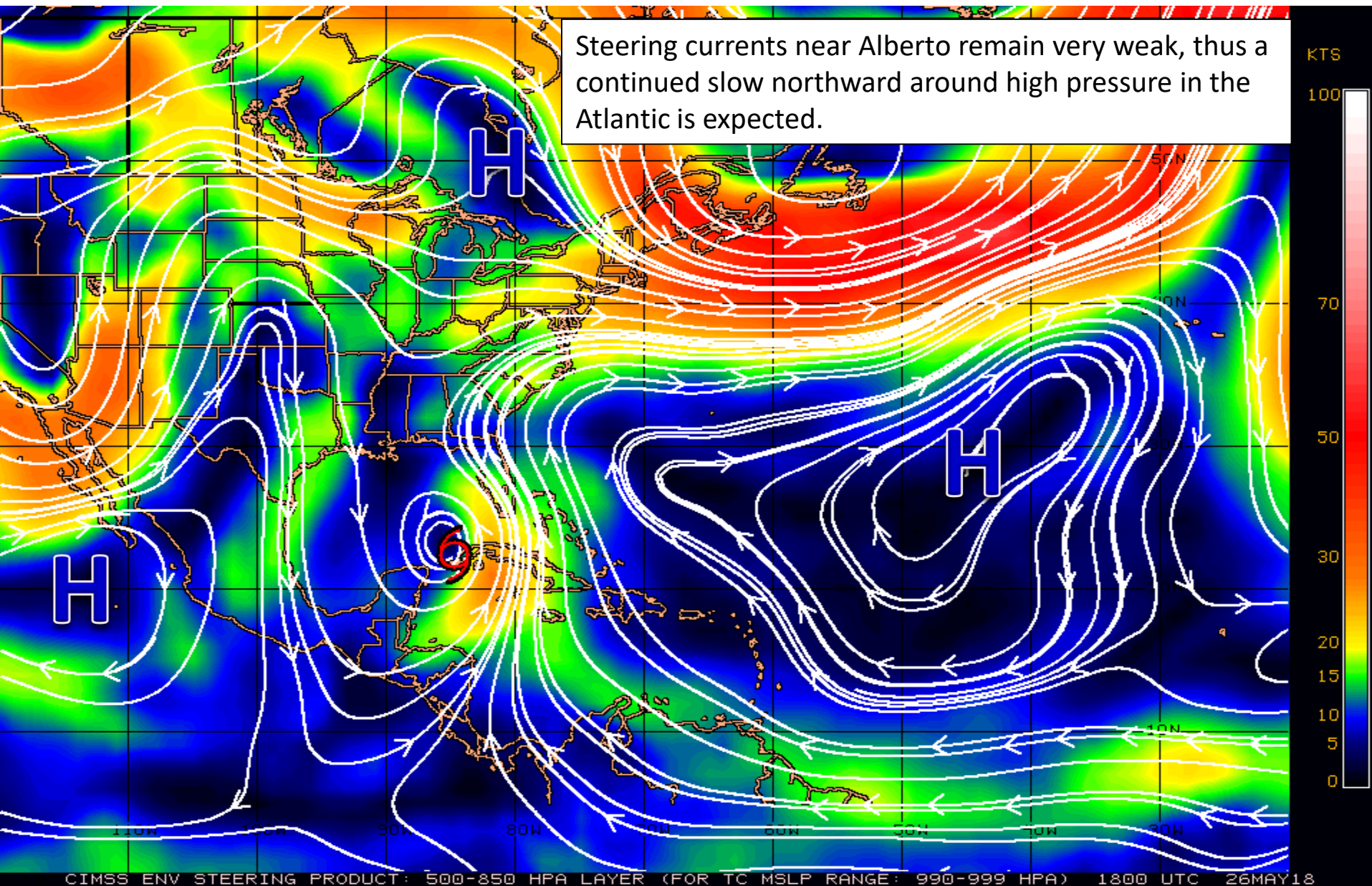
Caribbean / Gulf of Mexico Satellite Image



Center Reformed
Today NW of the tip of
Cuba. Most of the
clouds and rainfall are
east of the center.

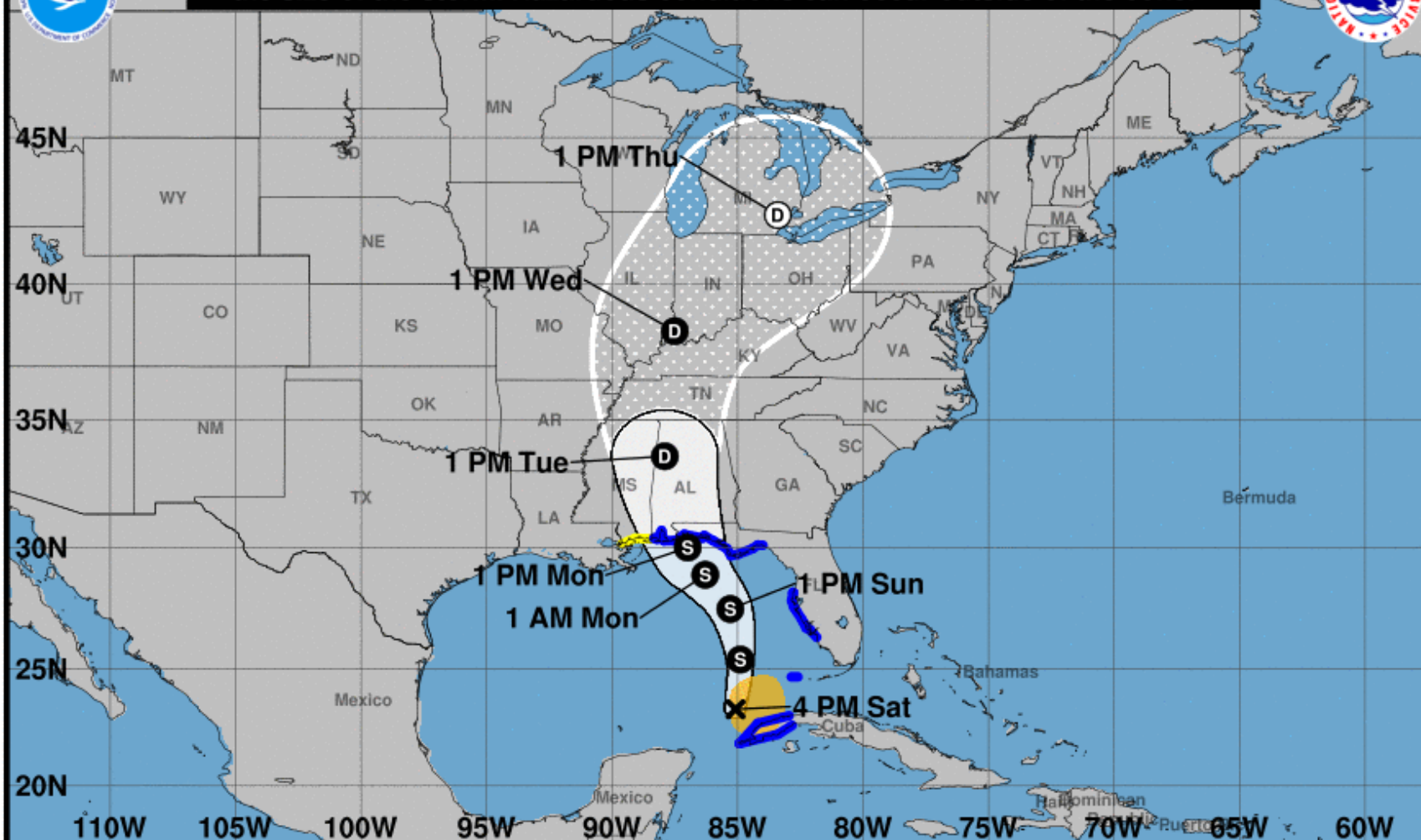


Steering Currents





Note: The cone contains the probable path of the storm center but does not show the size of the storm. Hazardous conditions can occur outside of the cone.



Subtropical Storm Alberto

Saturday May 26, 2018

4 PM CDT Advisory 6

NWS National Hurricane Center

Current information: x

Center location 23.3 N 85.1 W

Maximum sustained wind 40 mph

Movement N at 13 mph

Forecast positions:

● Tropical Cyclone ○ Post/Potential TC

Sustained winds: D < 39 mph

S 39-73 mph H 74-110 mph M > 110 mph

Potential track area:

Day 1-3 Day 4-5

Watches:

Hurricane Trop Stm

Warnings:

Hurricane Trop Stm

Current wind extent:

Hurricane Trop Stm

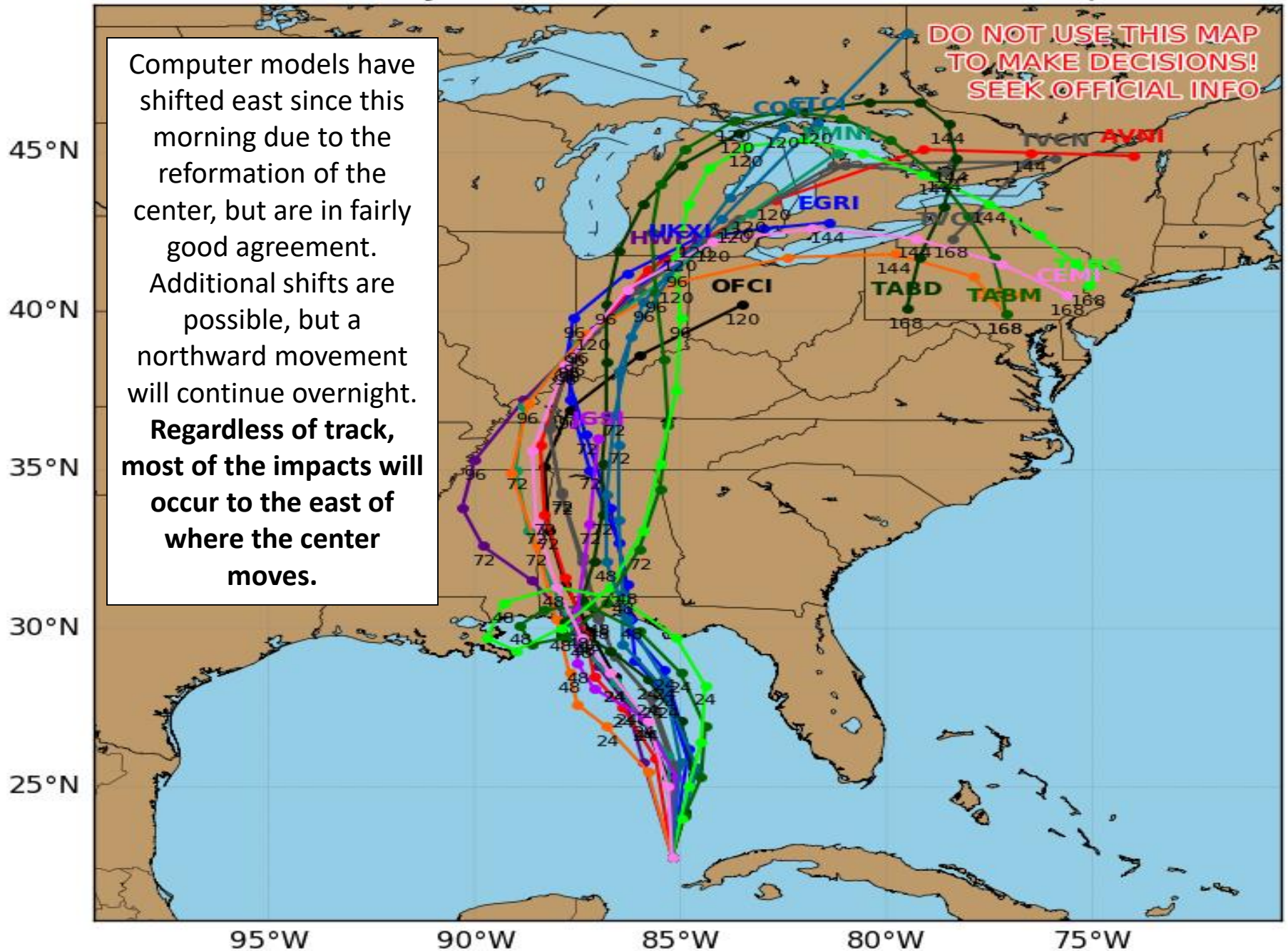
Subtropical Storm ALBERTO Model Track Guidance

Initialized at 18z May 26 2018

Levi Cowan - tropicaltidbits.com

Computer models have shifted east since this morning due to the reformation of the center, but are in fairly good agreement. Additional shifts are possible, but a northward movement will continue overnight. **Regardless of track, most of the impacts will occur to the east of where the center moves.**

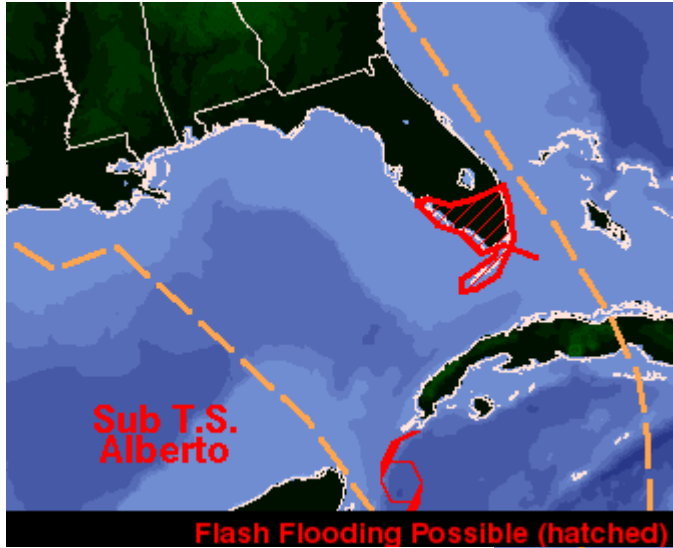
**DO NOT USE THIS MAP
TO MAKE DECISIONS!
SEEK OFFICIAL INFO**



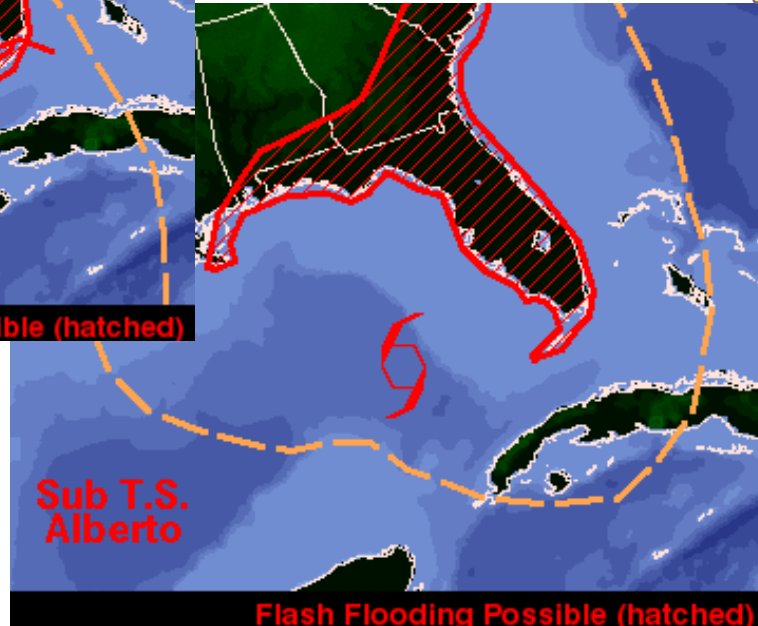
Forecast Weather Map – This Weekend

Tonight

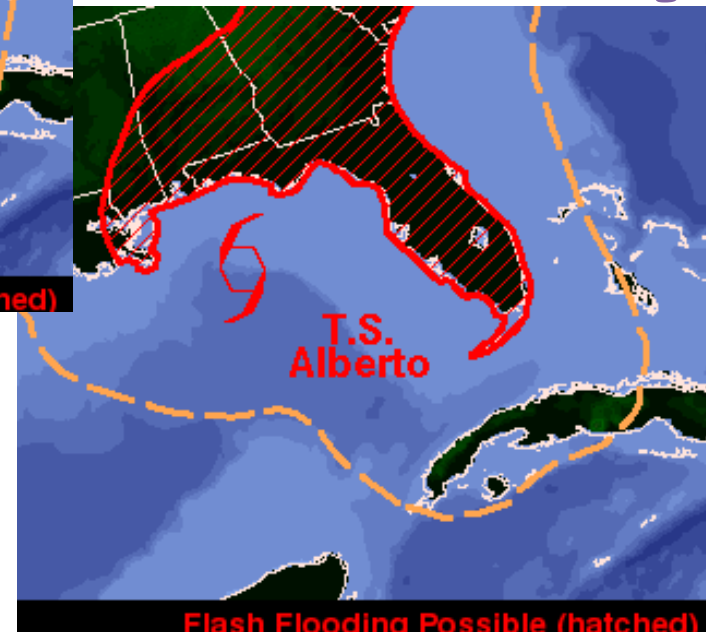
Alberto will affect all of Florida this weekend, with heavy rain and isolated tornadoes in South and Central Florida tonight and statewide tomorrow and Monday.



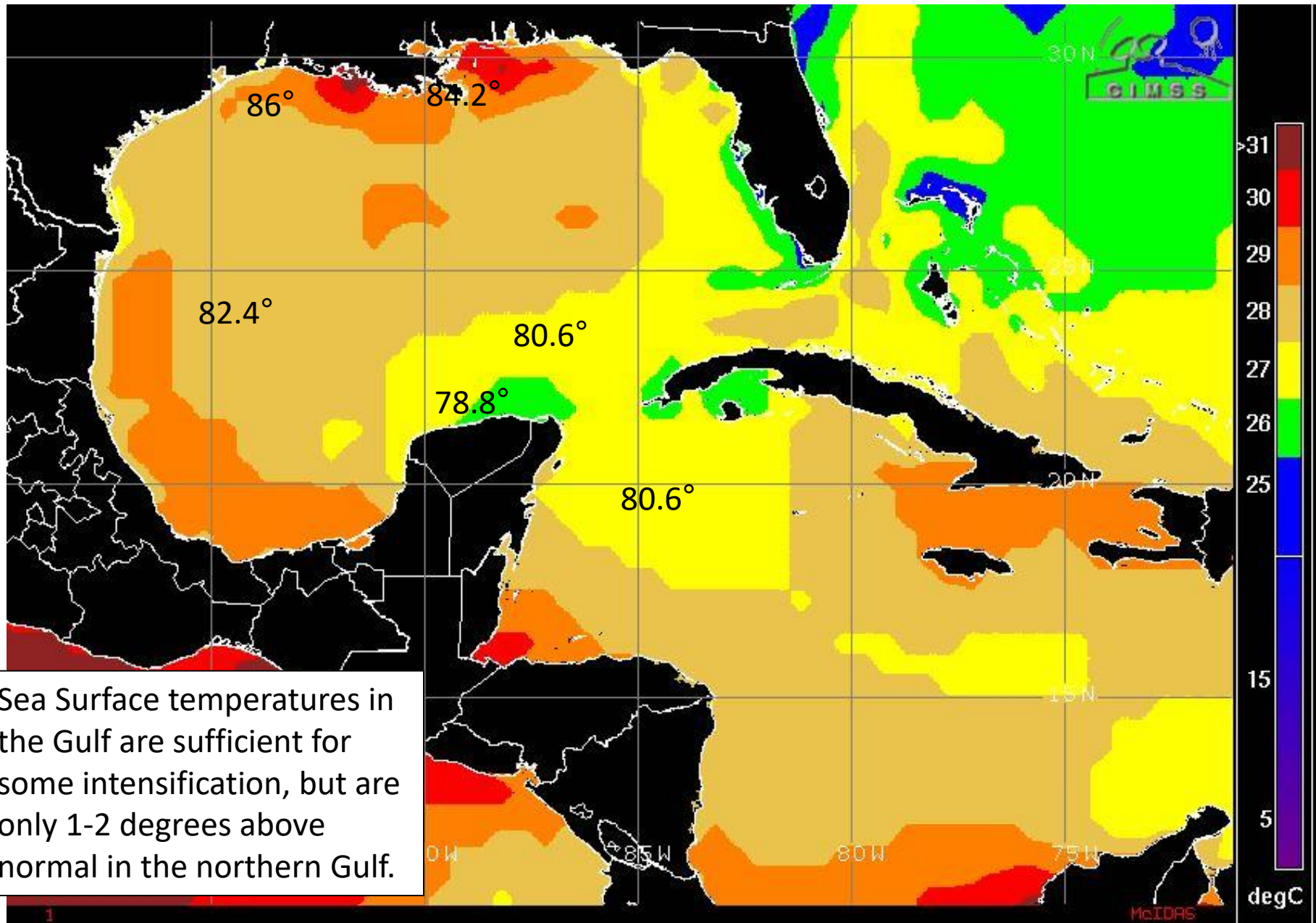
Sunday



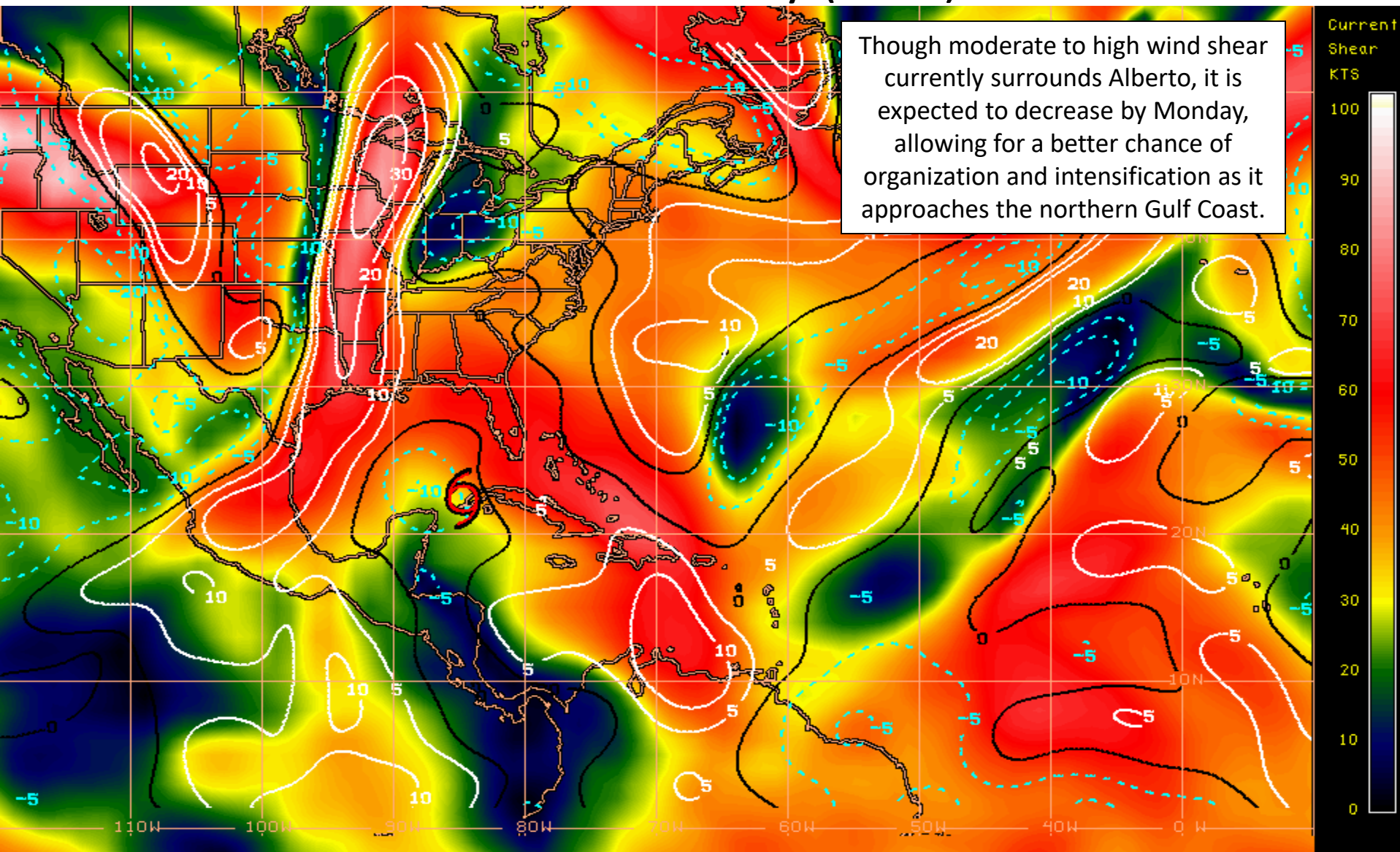
Monday



Current Sea Surface Temperatures



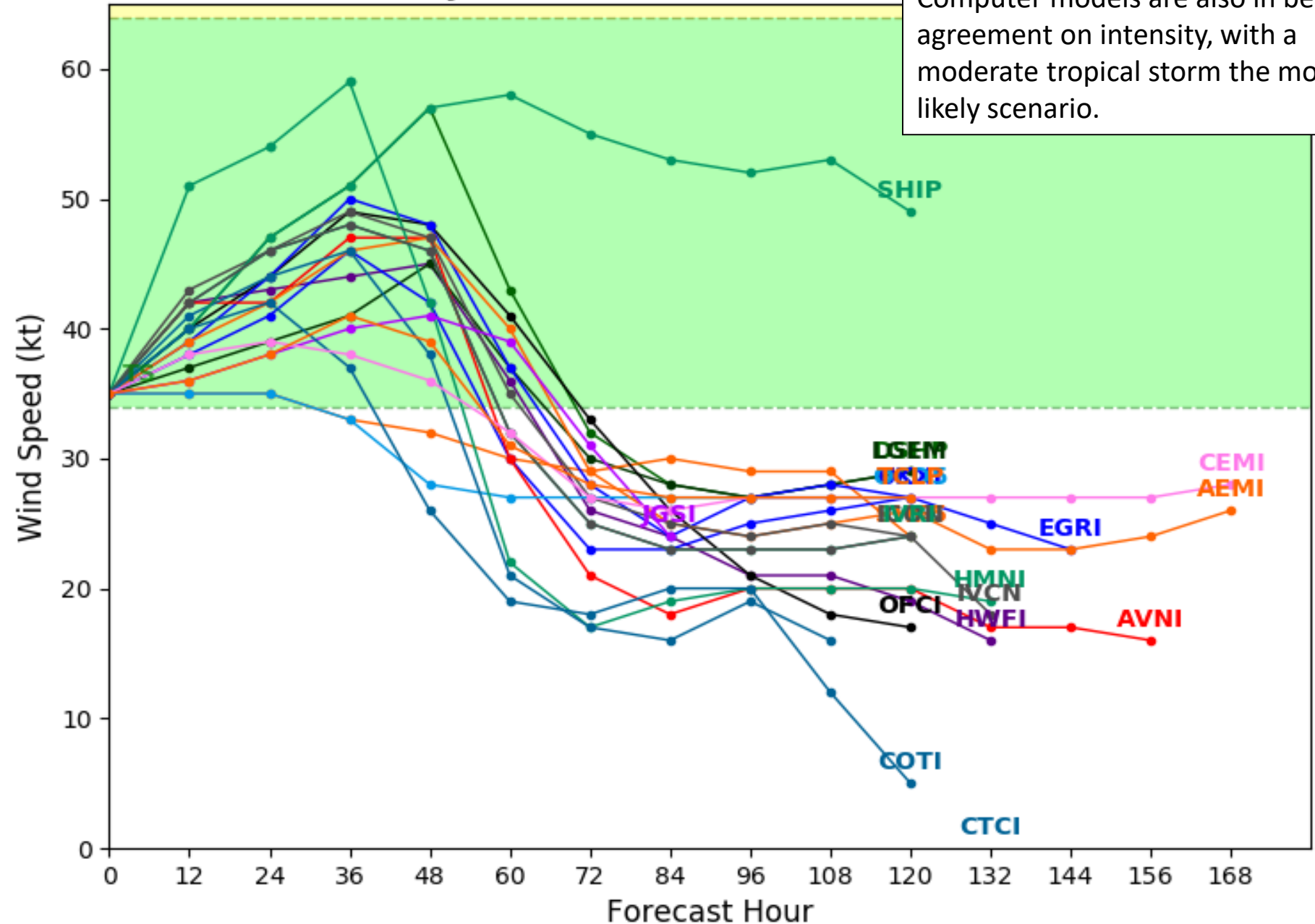
Current Wind Shear (shaded) and Shear Tendency (lines)

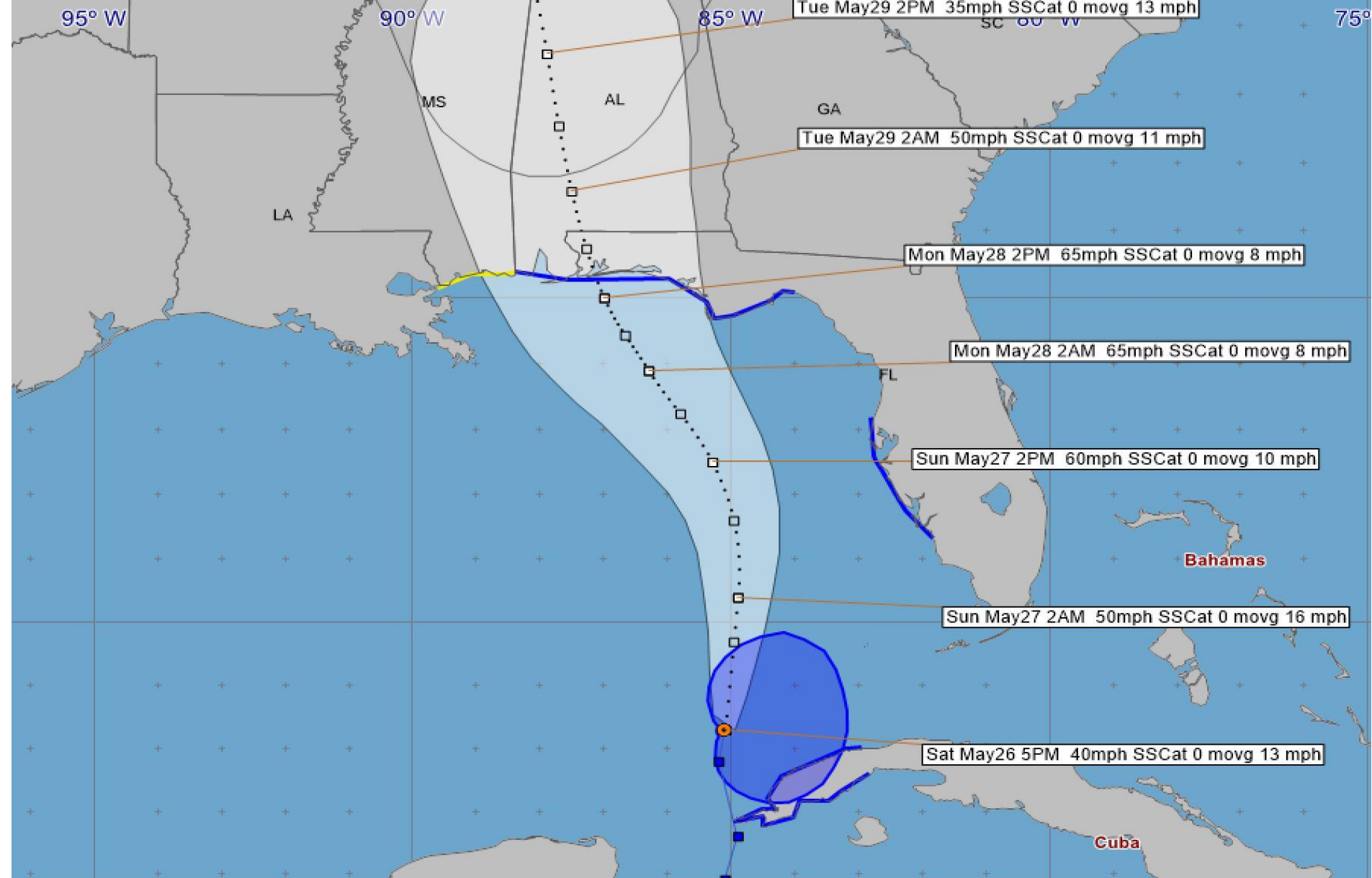


Shear Tendency (KTS) Over Past 24 Hours: Increasing — Decreasing ----

Initialized at 18z May 26 2018

Computer models are also in better agreement on intensity, with a moderate tropical storm the more likely scenario.





Subtropical Storm Alberto - Saturday, May 26, 2018 5 PM EDT Advisory #6

Center Location: 23.3 N 85.1 W Maximum Sustained Winds: 40 mph Movement: 13 mph N

forecast positions Potential Track Area: day 1-3 day 4-5 Surface Wind Field: at current location

Watches: hurricane tropical storm

Warnings: hurricane tropical storm

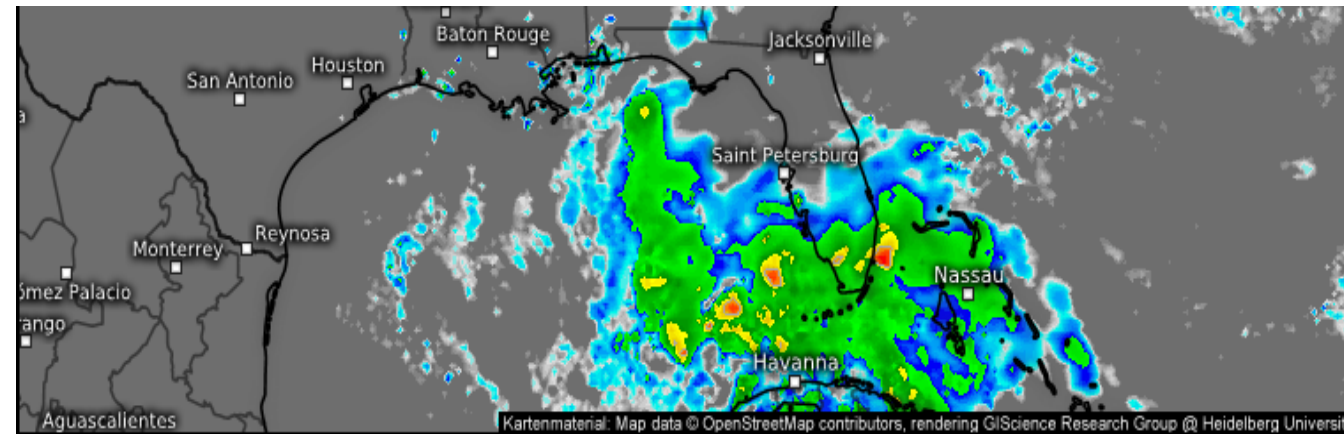
Sustained Wind Speeds: tropical storm ≥ 34 kt/39mph strong tropical storm ≥ 50 kt/58mph hurricane ≥ 64 kt/74mph

Current Radar as of 5:30 PM



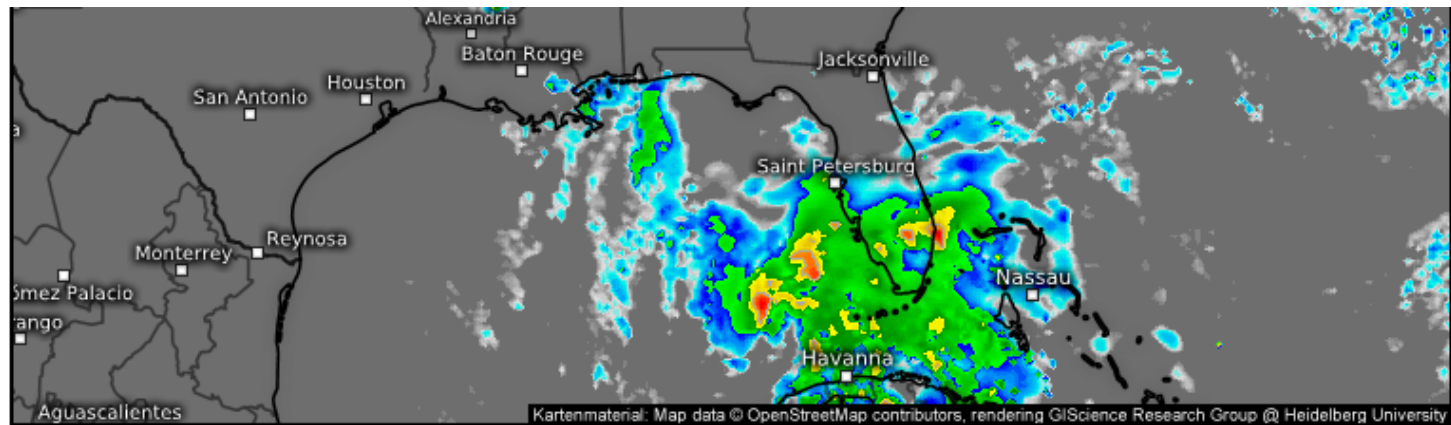
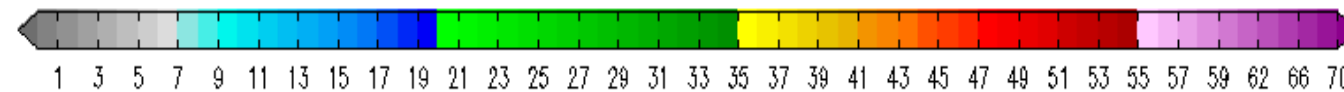
Forecast Radar Simulations

Showers and thunderstorms from Alberto will continue to track through Central and South Florida overnight.



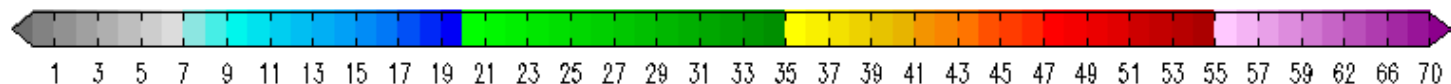
Base reflectivity (dBZ) 

Valid for
05/26/2018, 07:00pm CDT

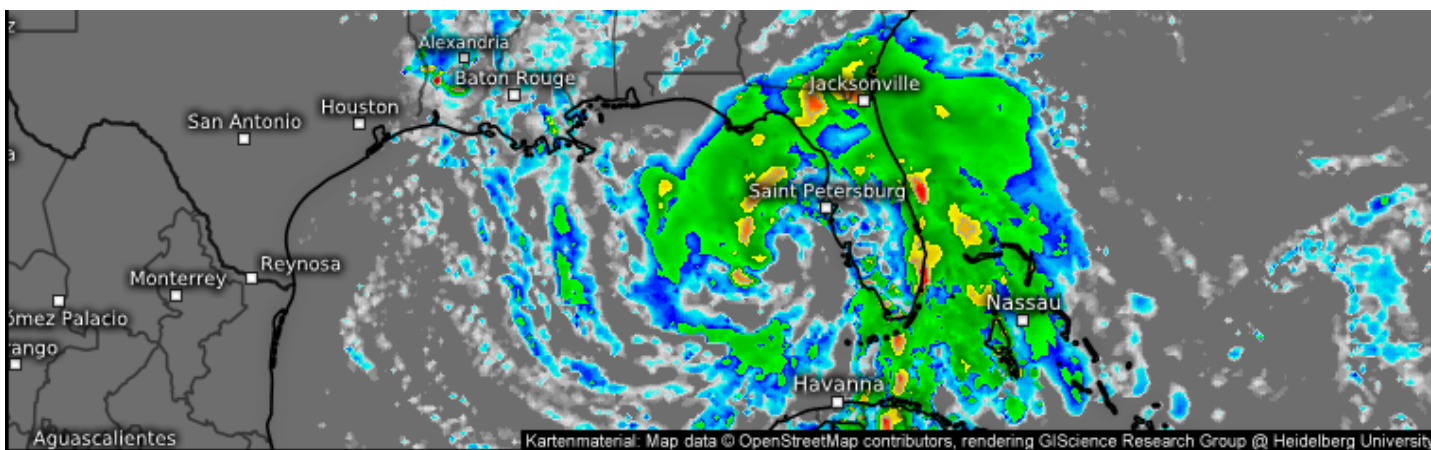


Base reflectivity (dBZ) 

Valid for
05/26/2018, 10:00pm CDT



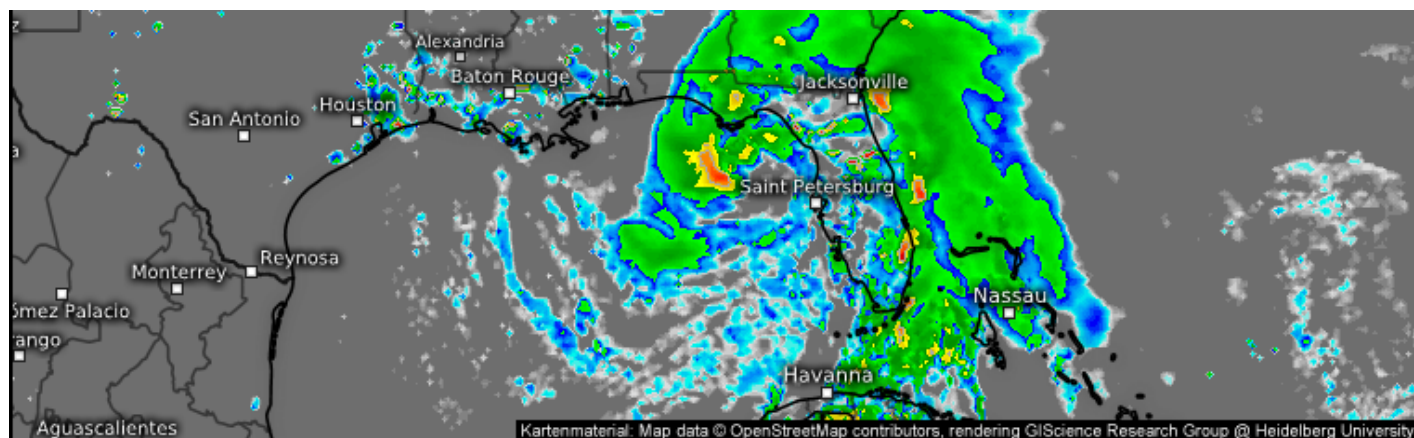
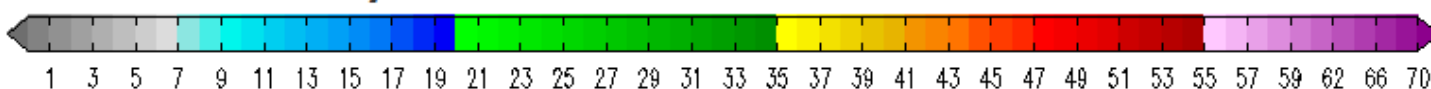
Forecast Radar Simulations



Widespread
showers and
storms will affect
all of Florida
Sunday.

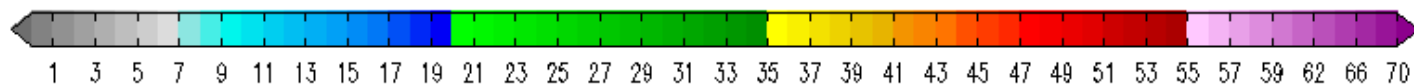
Base reflectivity (dBZ)

Valid for
05/27/2018, 10:00am CDT

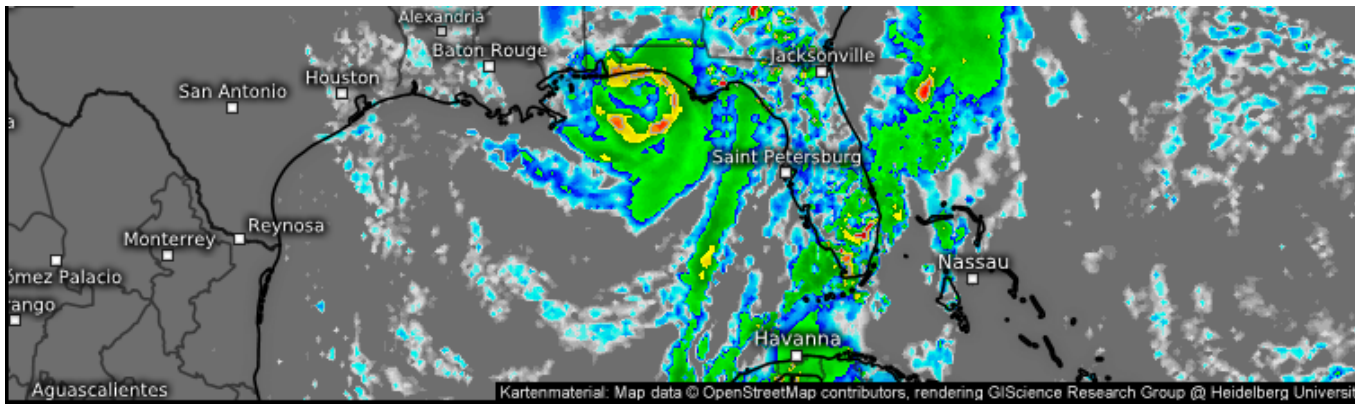


Base reflectivity (dBZ)

Valid for
05/27/2018, 04:00pm CDT



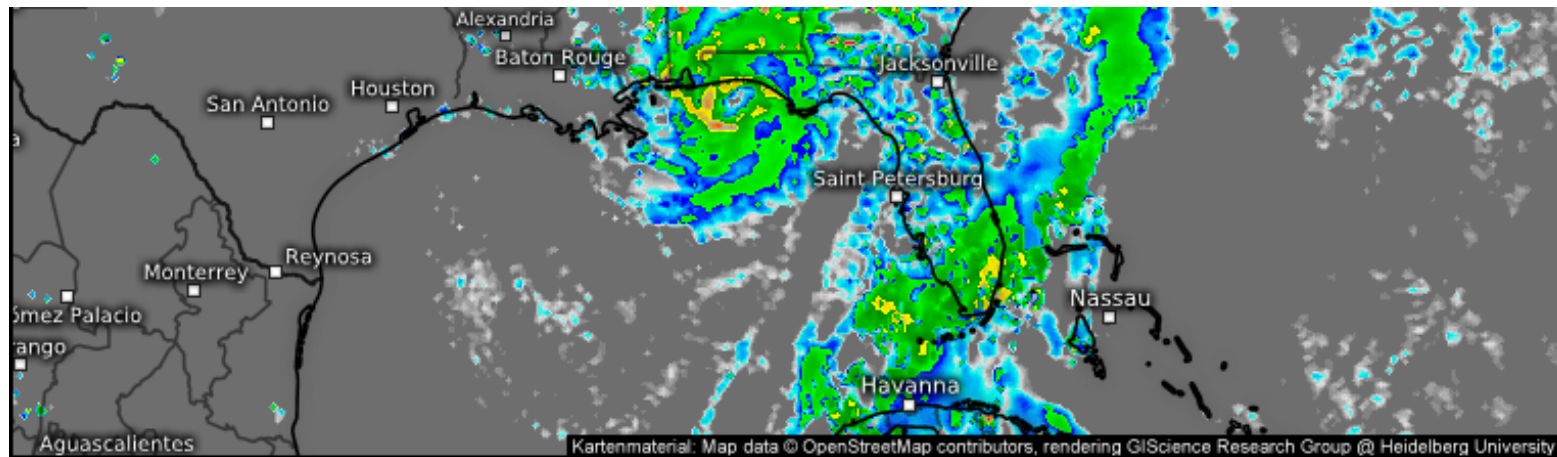
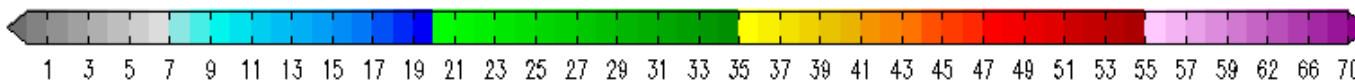
Forecast Radar Simulations



Showers and storms will continue to affect the state on Monday.

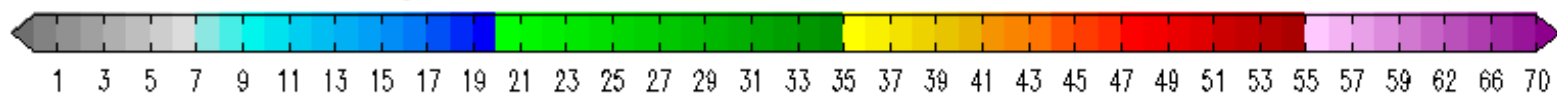
Base reflectivity (dBZ) 

Valid for
05/28/2018, 10:00am CDT



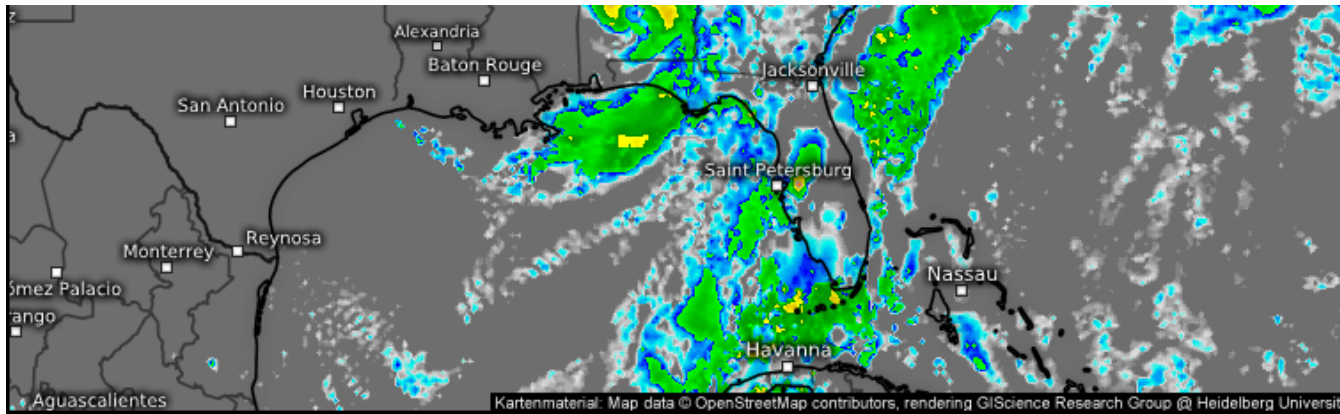
Base reflectivity (dBZ) 

Valid for
05/28/2018, 04:00pm CDT



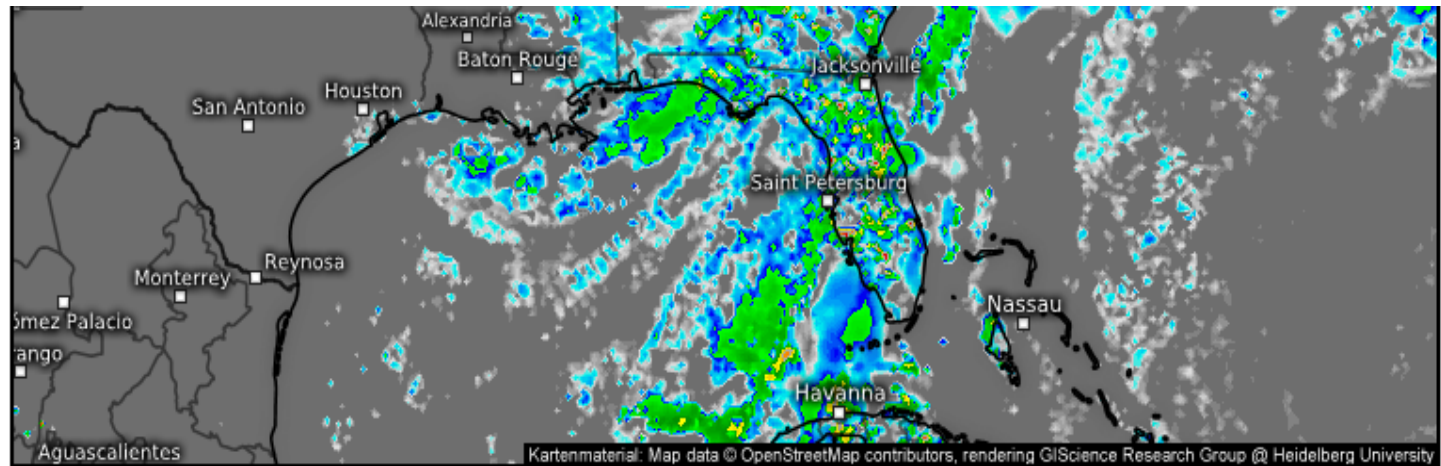
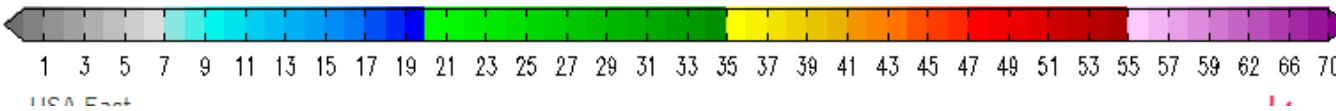
Forecast Radar Simulations

Showers and storms may linger throughout Tuesday statewide and continue to affect the Panhandle on Wednesday.



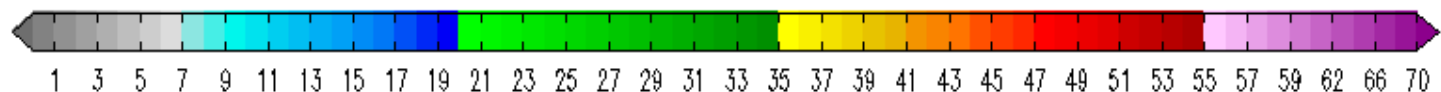
Base reflectivity (dBZ) 

Valid for
05/29/2018, 07:00am CDT



Base reflectivity (dBZ) 

Valid for
05/29/2018, 01:00pm CDT



SUBTROPICAL STORM ALBERTO

ALERTS

HURRICANE
WARNING

TROPICAL STORM
WARNING

HURRICANE
WATCH

TROPICAL STORM
WATCH

New Orleans

Biloxi

Mobile

Destin

Conditions Likely

Conditions Possible

Apalachicola

St. Petersburg

Sarasota

Fort Myers

Portugas

Tropical Storm Warnings are in effect for all coastal areas from Escambia to Jefferson County where tropical storm winds are now likely tomorrow night and Monday.

Tropical storm warnings continue for the West Coast (Pinellas to Lee) where some tropical storm force gusts are likely tonight.

Tropical Storm Watches have now been issued for Holmes, Washington, and Calhoun County.

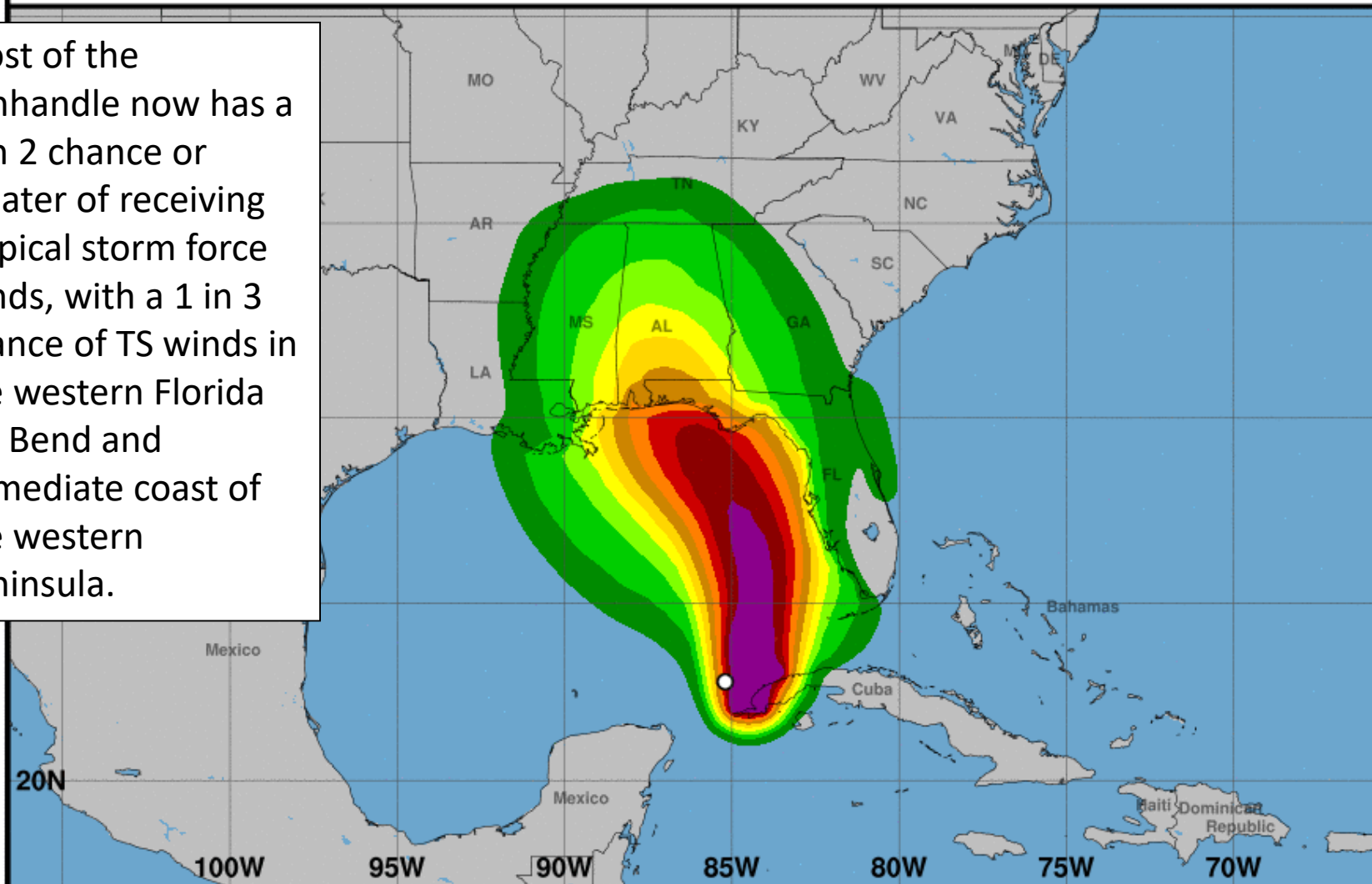


Tropical-Storm-Force Wind Speed Probabilities (Preliminary)

For the 120 hours (5.0 days) from 1 PM CDT SAT MAY 26 to 1 PM CDT THU MAY 31



Most of the Panhandle now has a 1 in 2 chance or greater of receiving tropical storm force winds, with a 1 in 3 chance of TS winds in the western Florida Big Bend and immediate coast of the western Peninsula.



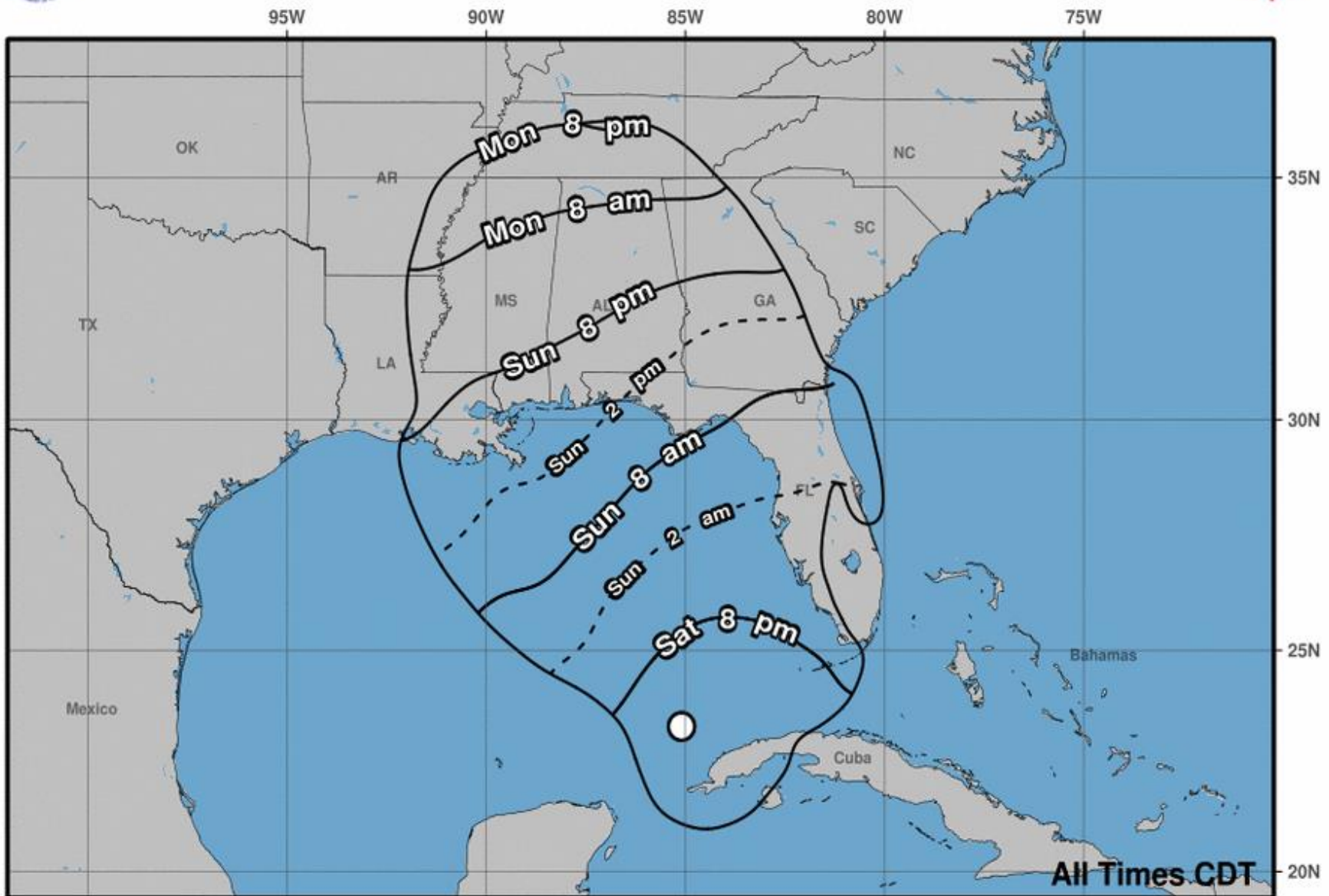
Probability of tropical-storm-force winds (1-minute average ≥ 39 mph) from all tropical cyclones

○ indicates Subtropical Storm Alberto center location at 1 PM CDT SAT MAY 26, 2018 (Forecast/Advisory #6)





Earliest Reasonable Arrival Time of Tropical-Storm-Force Winds

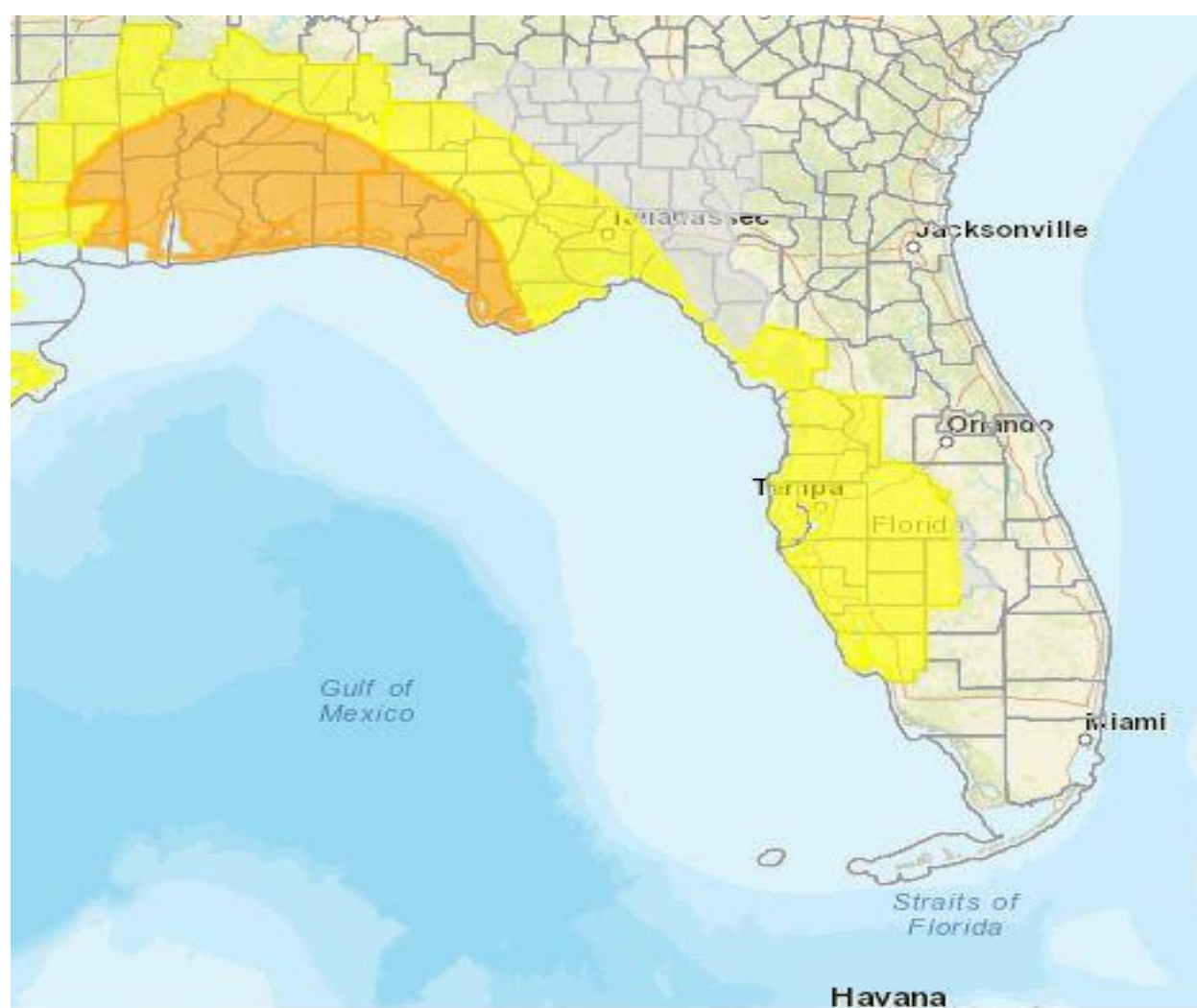


Subtropical Storm Alberto
Sat. May. 26, 2018 4 pm CDT
Advisory 6

Storm Location ○ < 34 kt (39 mph)
& ○ 34-63 kt (39-73 mph)
Wind Speed ● ≥ 64 kt (74 mph)

NOTE: Areas within the outermost black contour have at least a 5% chance of receiving winds of 34+ kt (39+ mph)

Interactive Map:
<https://www.weather.gov/srh/tropical?office=tae>



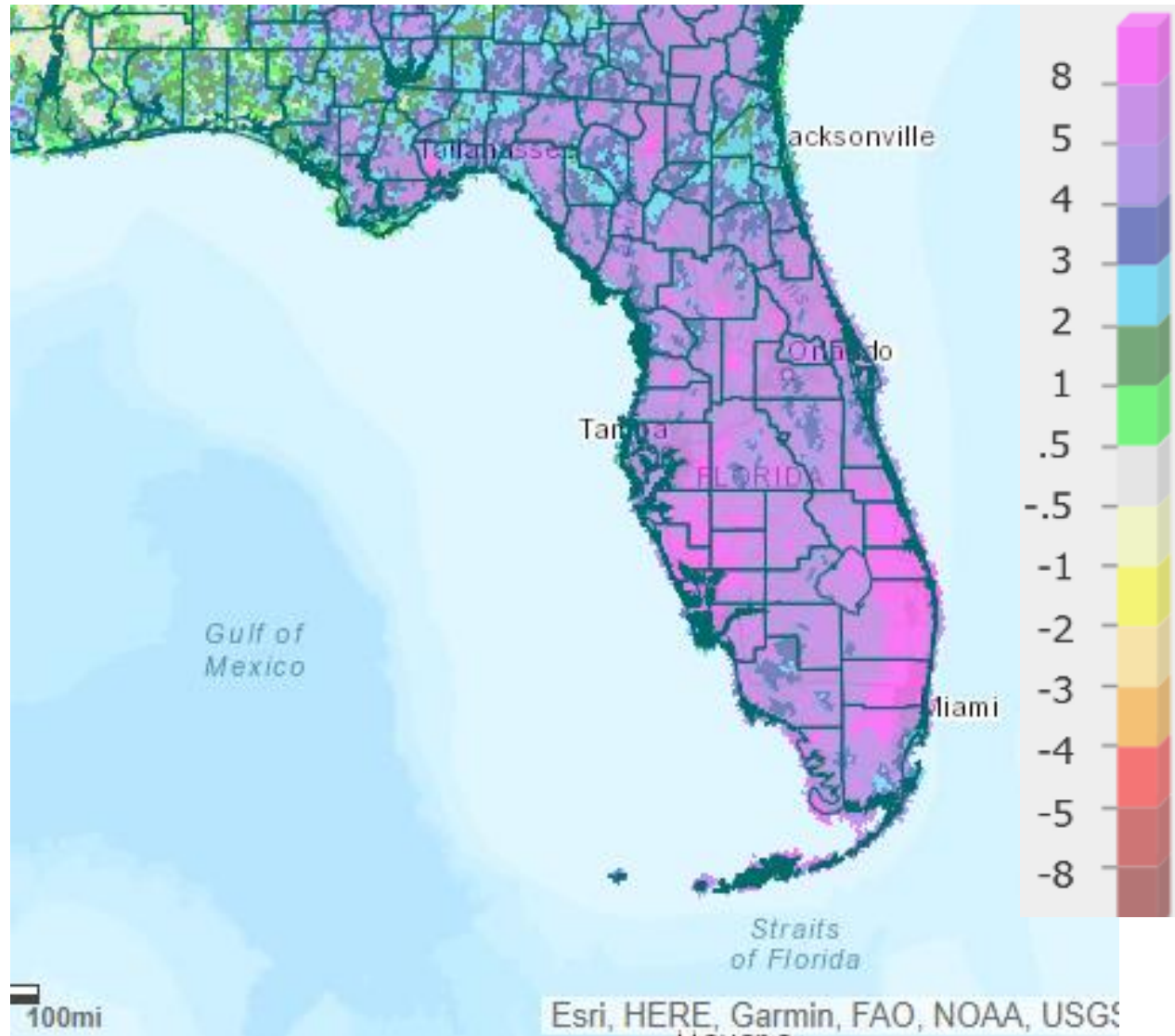
[Download KML]

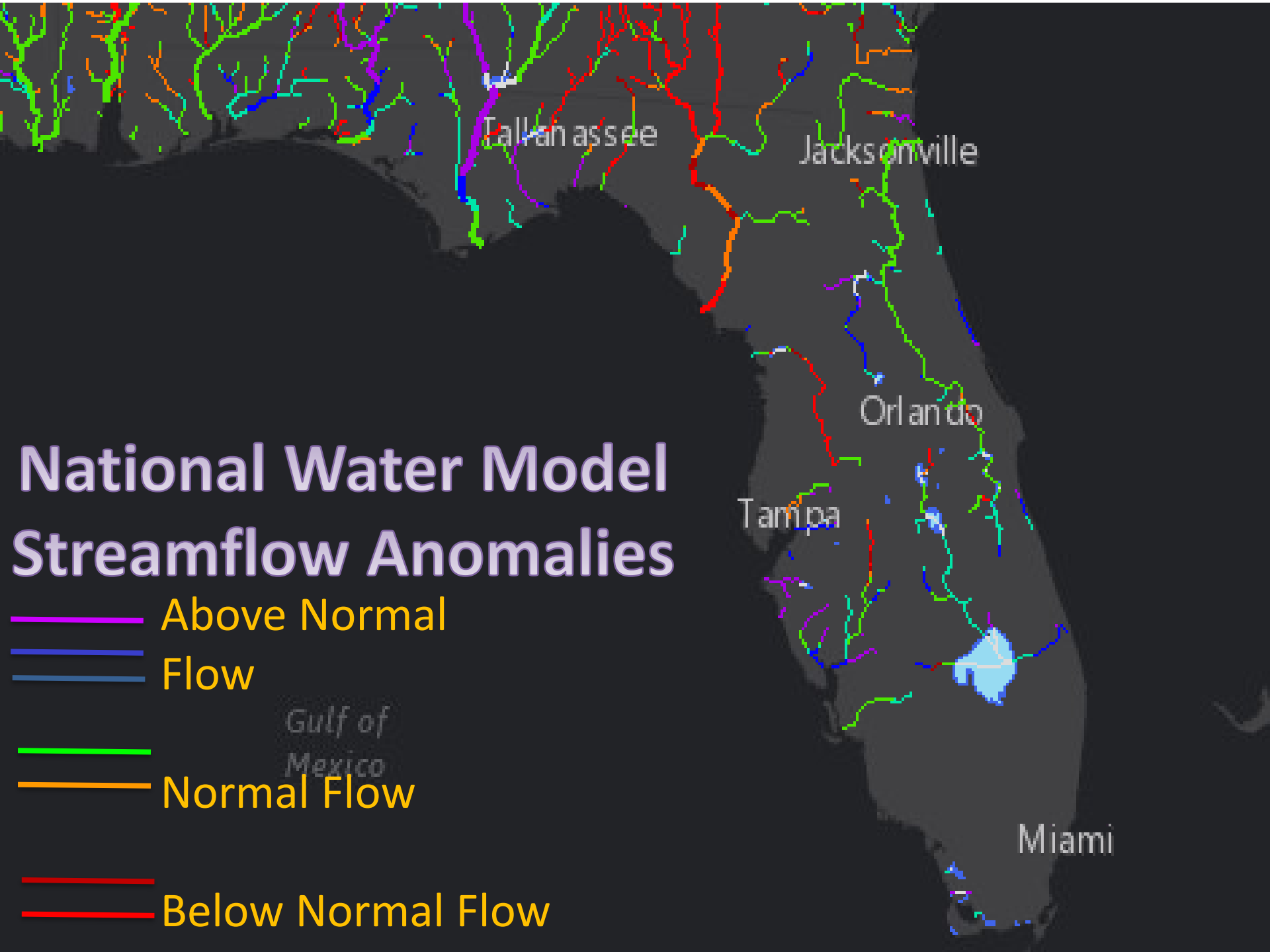
[Download Image]

| Wind Threat |
|---|
| Potential for wind greater than 110 mph |
| Potential for wind 74 to 110 mph |
| Potential for wind 58 to 73 mph |
| Potential for wind 39 to 57 mph |
| Wind less than 39 mph |

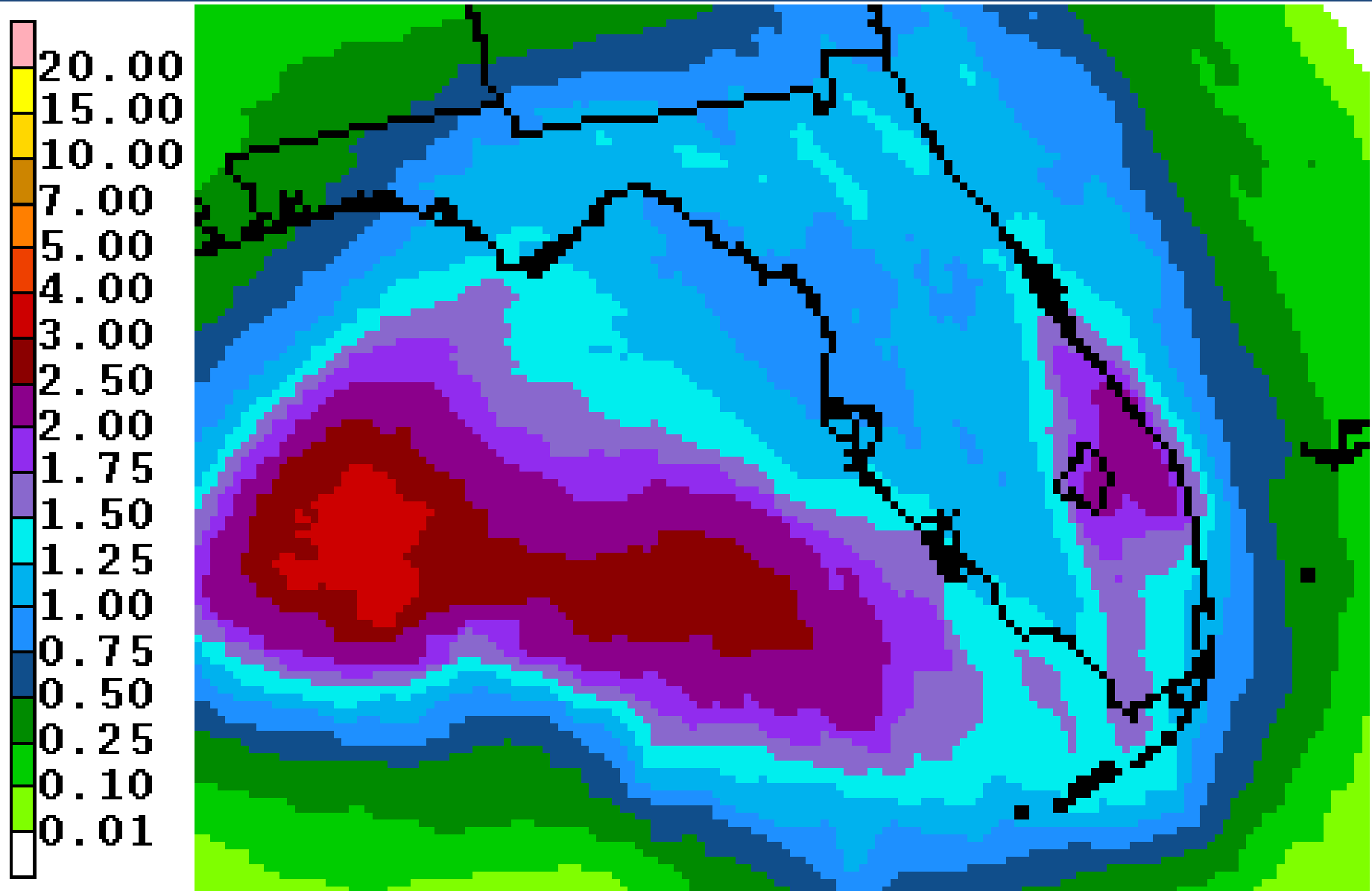
Rainfall Anomalies Over Past 14 Days

All of Florida has had above normal rainfall over the past 2 weeks, with well above normal rainfall observed in the Peninsula. This results in saturated grounds that will reduce the amount of time and rain needed to create flood conditions.

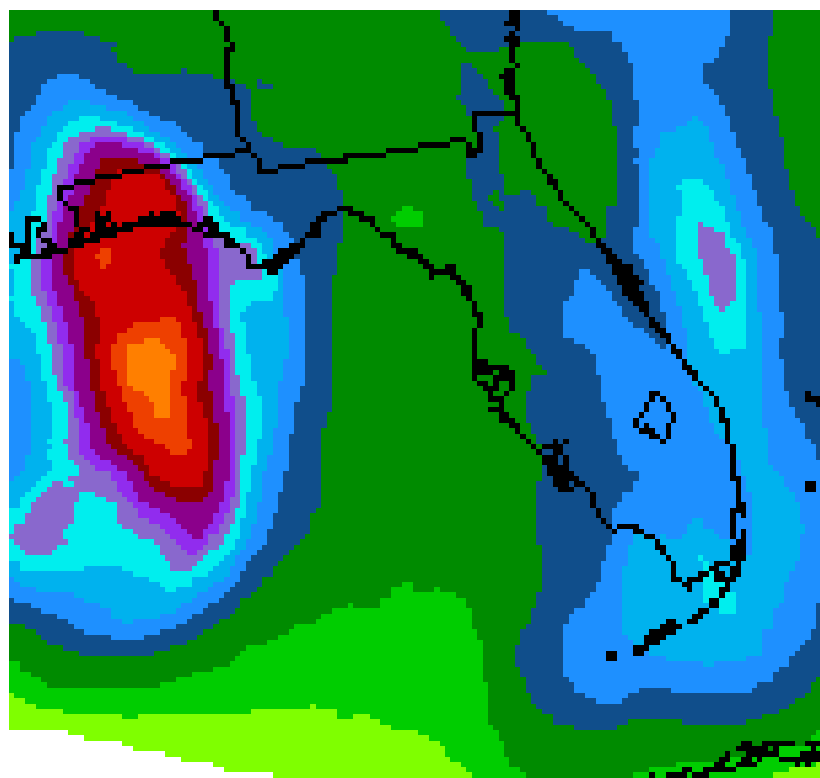
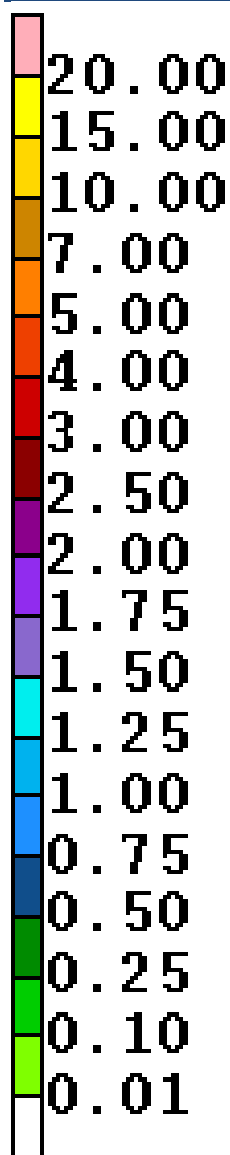




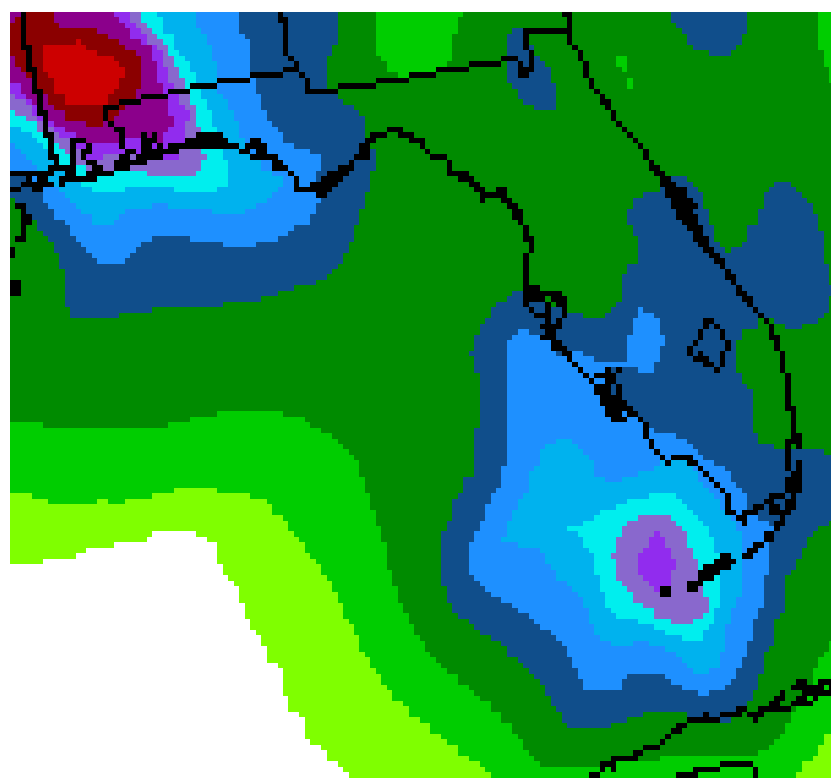
Forecast Total Rainfall Accumulations for Tonight



Forecast Total Rainfall Accumulations



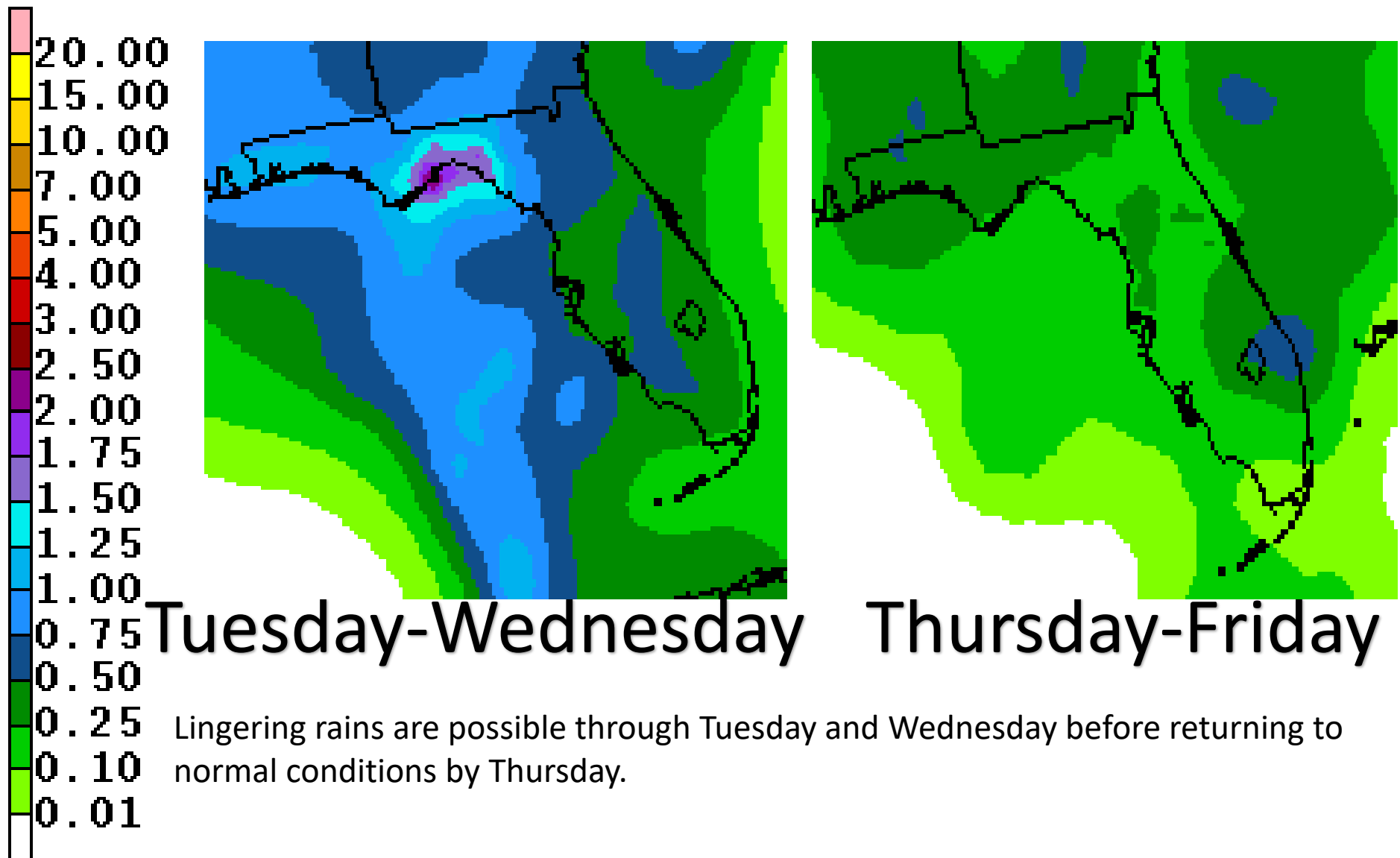
Sunday



Monday

With the system expected to move very slowly near the coast, heavy rainfall will remain a possibility through Monday. A large rain band may extend well east of the center and could impact the Peninsula even with the center of the system near the western Panhandle.

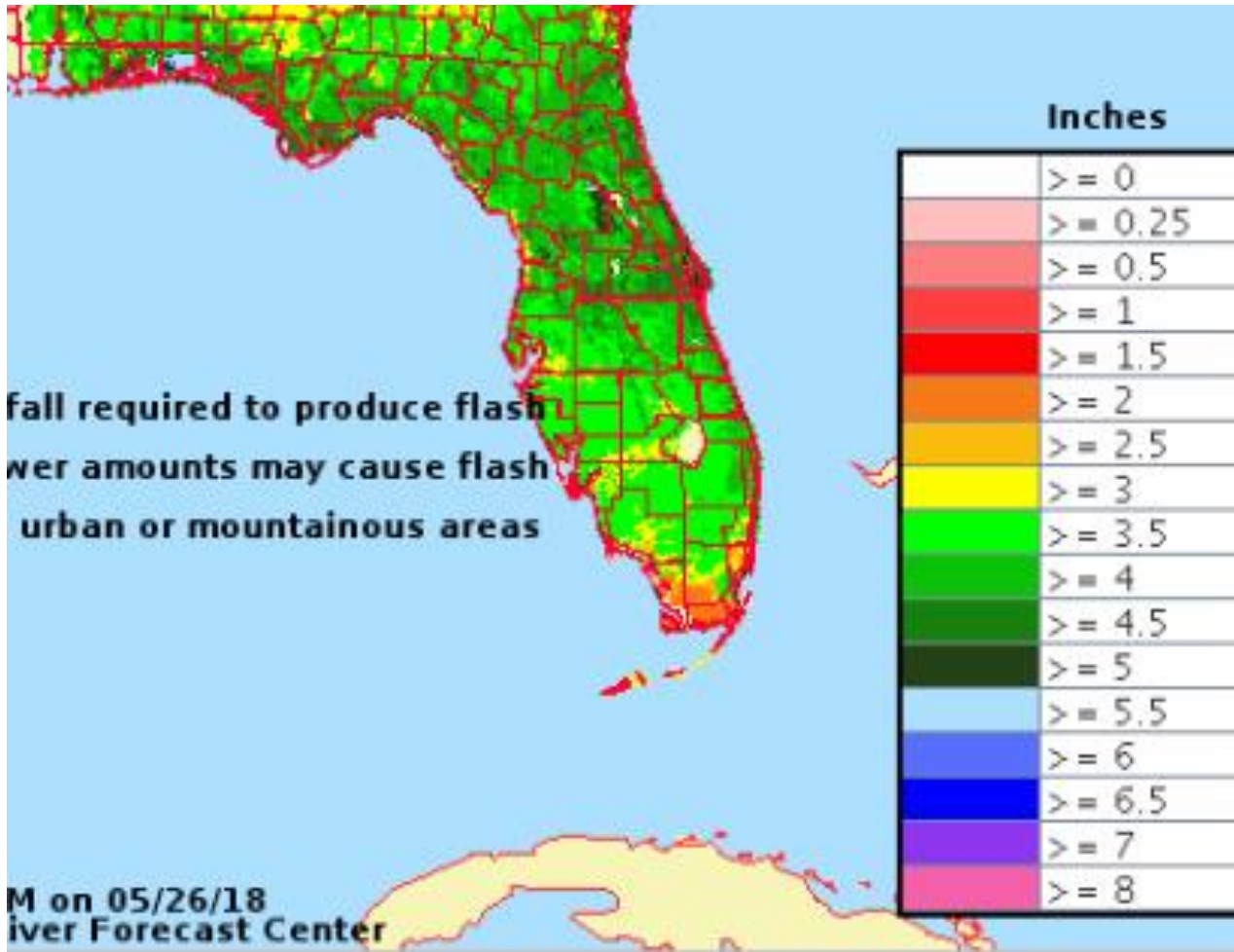
Forecast Total Rainfall Accumulations





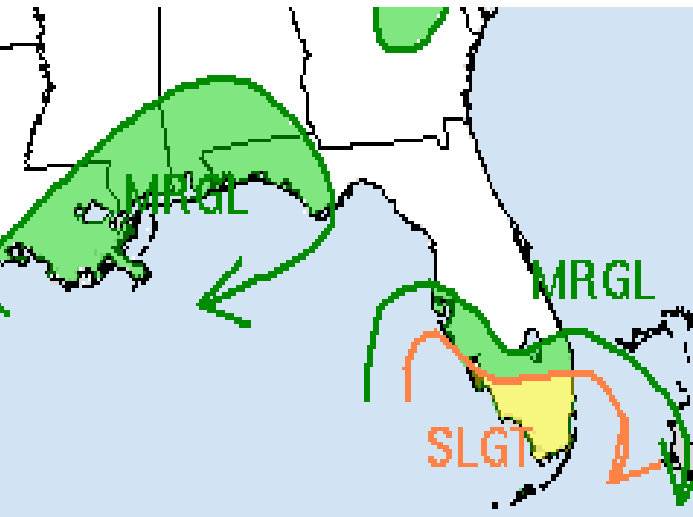
3-hr Flash Flood Guidance

Valid: 05/26/2018 @ 02:36 PM

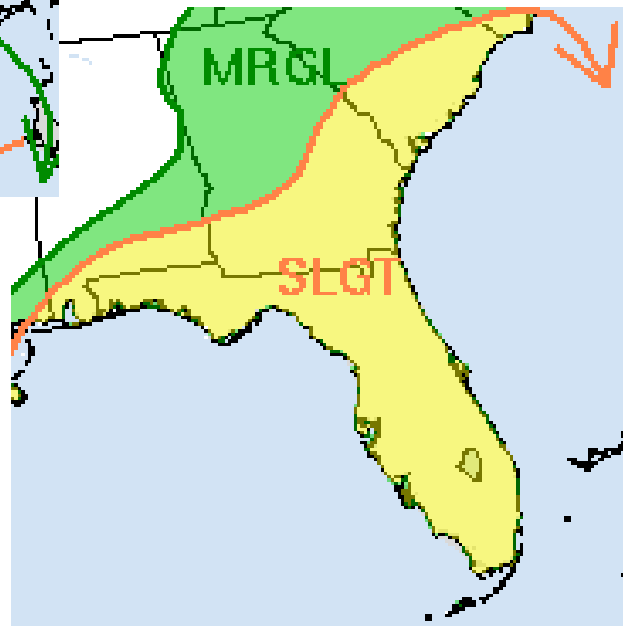


- Since soils are already saturated, any additional heavy rain (generally 3-4" in 3 hours, 5-6" in 6 hours or 6-8" in 12 hours) will cause flash flooding issues.
- Lower amounts, or 3-6" over a longer time period can still cause flooding of roads and low-lying areas.

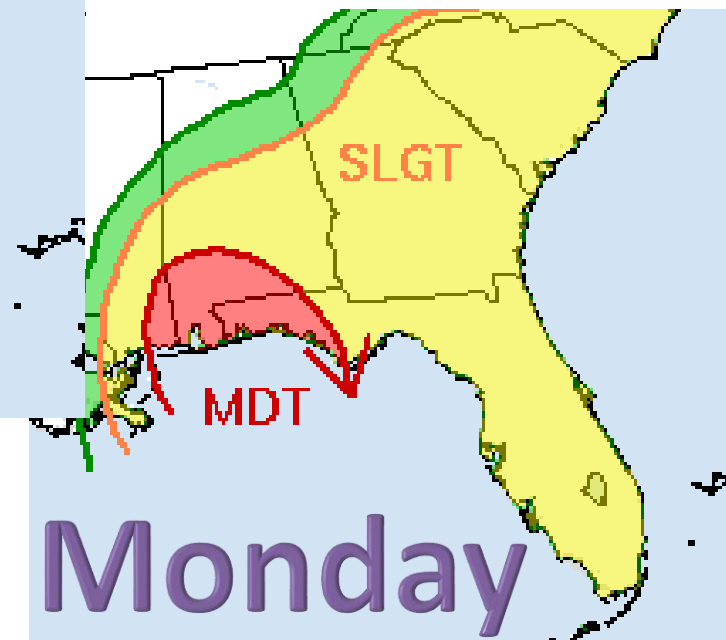
Excessive Rain Outlook – Risk for Flash Flooding



Tonight



Sunday



Monday

Risk of rainfall exceeding flash flood guidance within 25 miles of a point to the right of a line

HIGH: > 50%

SLGT: 10%-20%

MDT: 20%-50%

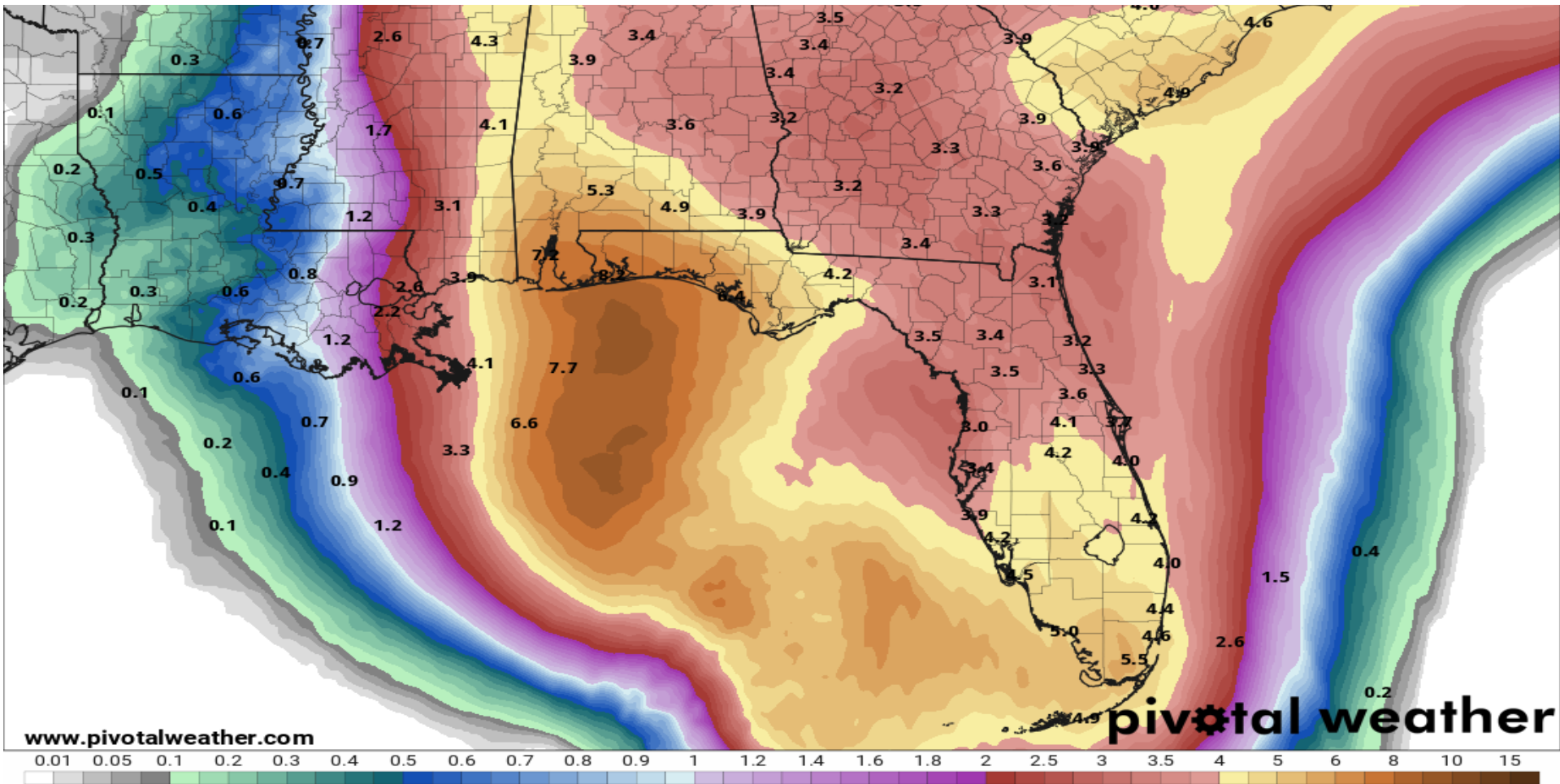
MRGL: 5%-10%

Forecast Total Rainfall Accumulations for next 7 Days

7-Day Precipitation (in)
Ending Saturday, Jun. 2, 2018 at 8 a.m. EDT

Init: Sat 2018-05-26 12z WPC

EXACT RAINFALL AMOUNTS WILL DEPEND ON THE STRUCTURE AND TRACK OF ALBERTO, WHICH COULD BE HIGHER OR LOWER THAN WHAT IS SHOWN. At this time, widespread average rainfall amounts of 3-6" inches are possible statewide, with isolated higher totals of 7 to 13 inches possible over portions of the Panhandle and South Florida. This should result in street flooding and river flooding, especially in areas where several storms repeatedly move over the same area.

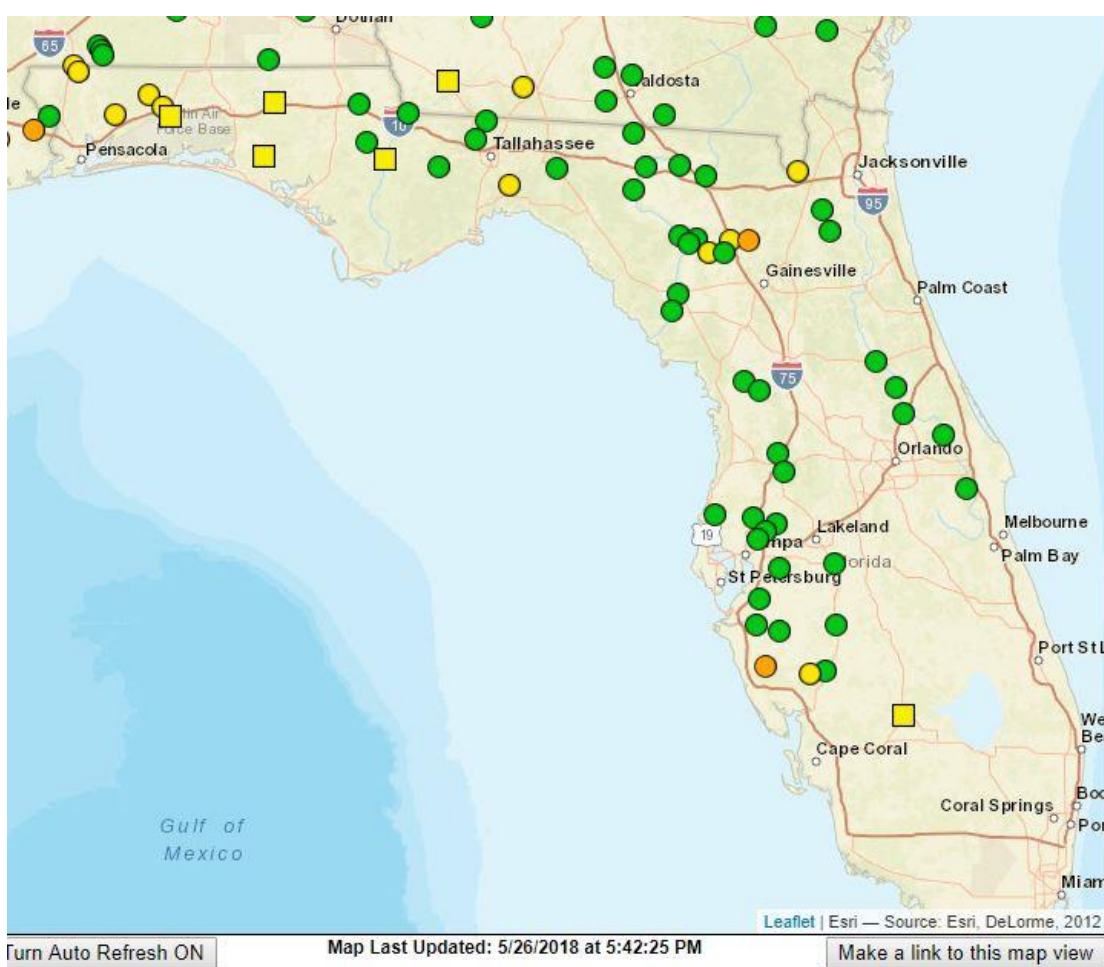


Active Flood Watches



7 Day Chance of River Flooding

In addition to the flash flooding potential, minor to moderate flooding on area rivers will be possible, but this will ultimately be dependent on where the heaviest rain falls. The areas for concern are currently in West Central Florida, the Florida Panhandle, and the Santa Fe River basin and Paynes Prairie State Park.



News Legend

| | | |
|-----------------------------------|----------------------------|-----------------------|
| News Items less than 24 hours old | News Items 1 to 7 days old | No current News Items |
|-----------------------------------|----------------------------|-----------------------|

News Legend

| | | |
|-----------------------------------|----------------------------|-----------------------|
| News Items less than 24 hours old | News Items 1 to 7 days old | No current News Items |
|-----------------------------------|----------------------------|-----------------------|

Map Legend

| Chance of Exceedance | | | River Forecast Centers | |
|---|----------------|-----|---------------------------------------|--|
| 30% | Level | 70% | | |
| | Action | | Middle Atlantic River Forecast Center | |
| | Minor Flood | | Northeast River Forecast Center | |
| | Moderate Flood | | Ohio River Forecast Center | |
| | Major Flood | | Southeast River Forecast Center | |
| = less than 30% chance of reaching Action level | | | | |
| = no critical levels defined for this point | | | | |

STORM SURGE ALERTS

WATCH
(INUNDATION POSSIBLE)

WARNING
(INUNDATION EXPECTED)



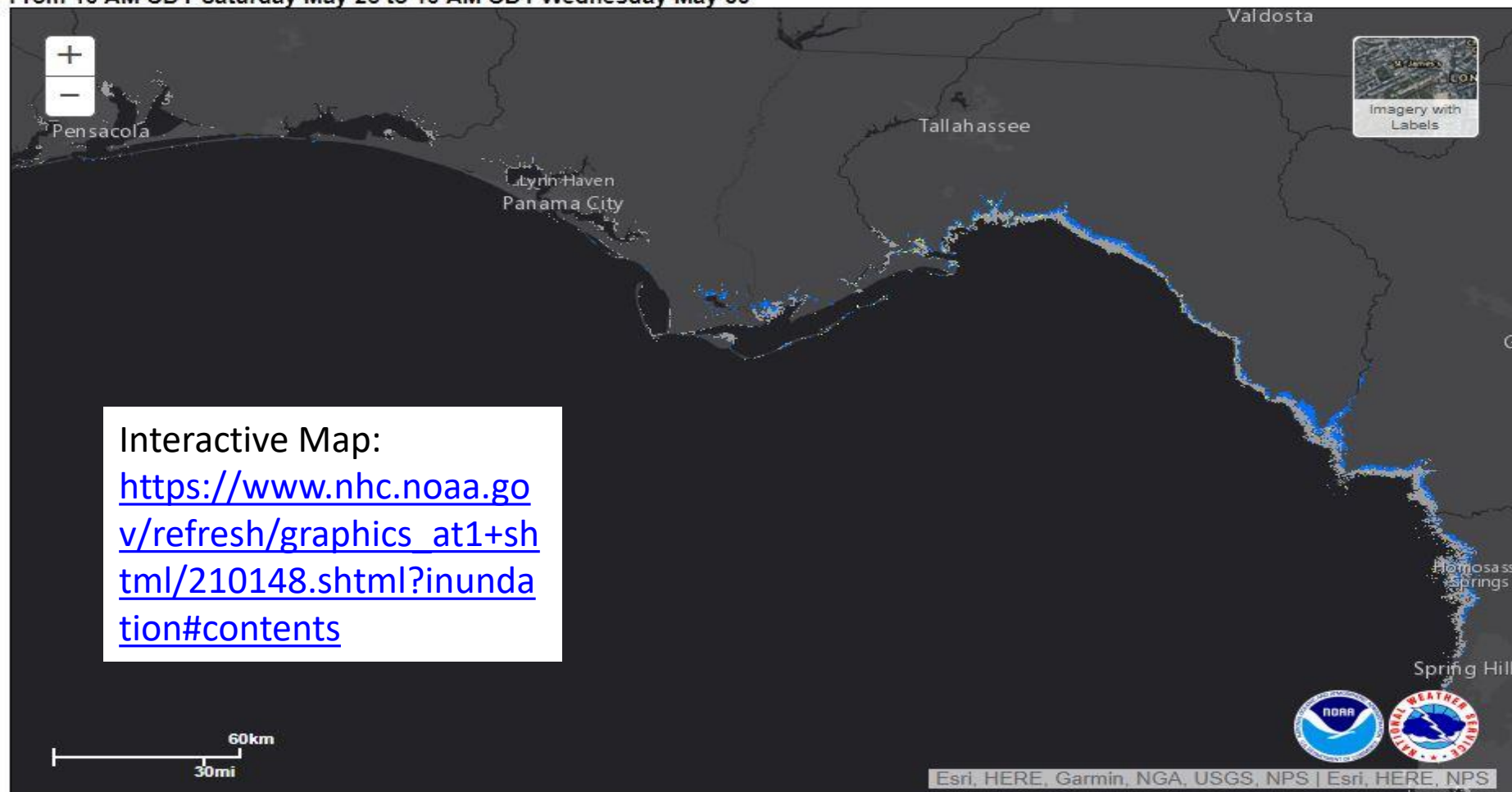
Storm surge values are expected to peak during high tide tomorrow afternoon in the Big Bend and during high tide near landfall on Monday in the Panhandle.

Potential Storm Surge Flooding Map (Inundation)

NHC Potential Storm Surge Flooding Map

Subtropical Storm ALBERTO (2018) Advisory 05

From 10 AM CDT Saturday May 26 to 10 AM CDT Wednesday May 30



Potential Storm Surge Flooding*

| | |
|--|-----------------------------------|
|  | Intertidal Zone/Estuarine Wetland |
|  | Greater than 1 foot above ground |
|  | Greater than 3 feet above ground |
|  | Greater than 6 feet above ground |

Map Layer Options:

Inundation Layer Only

Inundation with Intertidal Layer

Map Opacity Slider



Download GIS data
(Instructions)

Inundation Layer Only

Inundation with Intertidal Layer

Severe Weather Outlook Saturday, May 26, 2018



| | |
|---|----------|
| 5 | High |
| 4 | Moderate |
| 3 | Enhanced |
| 2 | Slight |
| 1 | Marginal |
| | Thunder |

Tornado Risk

Severe Weather Outlook Sunday, May 27, 2018



Severe Weather Outlook Monday, May 28, 2018



Summary

- At 5pm EDT Saturday, the center of Sub-Tropical Storm Alberto was located 240 miles west of Key West, Florida and 475 miles south of Panama City, Florida.
- Maximum sustained winds remain near 40mph and Alberto is moving north around 13 mph. A northward motion is expected today, followed by a turn to the northwest on Sunday.
- On the forecast track, the center of Alberto is expected to move across the eastern Gulf of Mexico tonight through Monday, and approach the northern Gulf Coast Monday evening.
- Computer models are getting into better agreement on track and intensity, but there is still a some uncertainty with regard to the timing of landfall of the system.
- Only slow strengthening is expected tonight due to the broad nature of the system and continued influences of wind shear and dry air. There is an opportunity for more strengthening tonight and Sunday and Alberto will likely make the transition to a classical tropical storm in about 36 hours.

Florida Outlook:

- Regardless of track or intensity, this system will result in a multi-day widespread rainfall event that may impact a large portion of Florida, continuing tonight in Central and South Florida and then statewide Sunday and Monday. Lingering rains may continue through Tuesday or Wednesday.
- While the Panhandle is within the 3 day cone, impacts will be felt across a majority of the state.
- A Tropical Storm Watch is in effect for Washington, Holmes, and Calhoun County.
- Tropical Storm Warnings are in effect for coastal counties from Escambia to Jefferson and from Pinellas and Hillsborough to Lee County.
- A Storm Surge Watch extends along the Panhandle Coast from the Escambia County east to Crystal River in Citrus County due to anticipated surge values of 2-4 feet.
- Flood Watches are in effect for most of the state, including all counties in Central and South Florida, and in the Panhandle and Big Bend.
- Widespread rainfall amounts of 3-6" are expected statewide, with locally higher amounts of 7-12+" possible, especially for the Florida Panhandle and portions of South Florida.
- River flooding will also be a concern for portions of the state over the coming days.
- Increased wave heights are also expected along most Florida beaches and will lead to a high risk of rip currents for the holiday weekend and into next week.
- There is a marginal to slight risk (level 2 of 5) of tornadoes in Southwest Florida tonight, and then for much of the state for Sunday and Monday. Tornado Watches may be issued.

Another briefing packet will be issued Sunday morning. For more information on this system visit the NHC website at www.nhc.noaa.gov



TROPICAL UPDATE

Created by:

Michael Spagnolo, Deputy State Meteorologist
Michael.spagnolo@em.myflorida.com

State Meteorological Support Unit
Florida Division of Emergency
Management

Users wishing to subscribe (approval pending) to this distribution list, register at https://public.govdelivery.com/accounts/FLDEM/subscriber/new?topic_id=SERT_Met_Tropics.

Other reports available for subscription are available at <https://public.govdelivery.com/accounts/FLDEM/subscriber/new?preferences=true>