



TROPICAL UPDATE

8 AM EDT

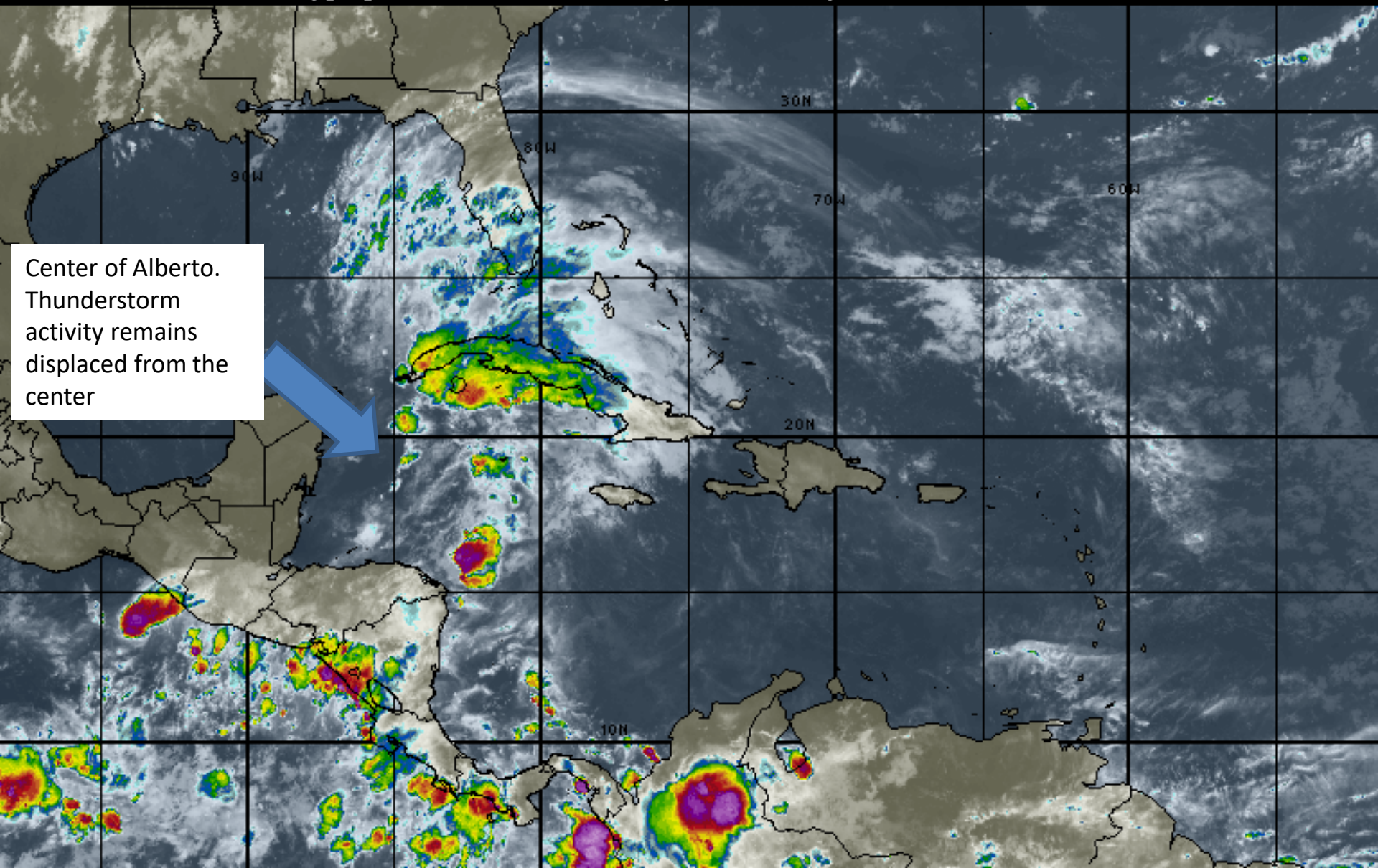
Saturday, May 26, 2018

Sub-Tropical Storm Alberto

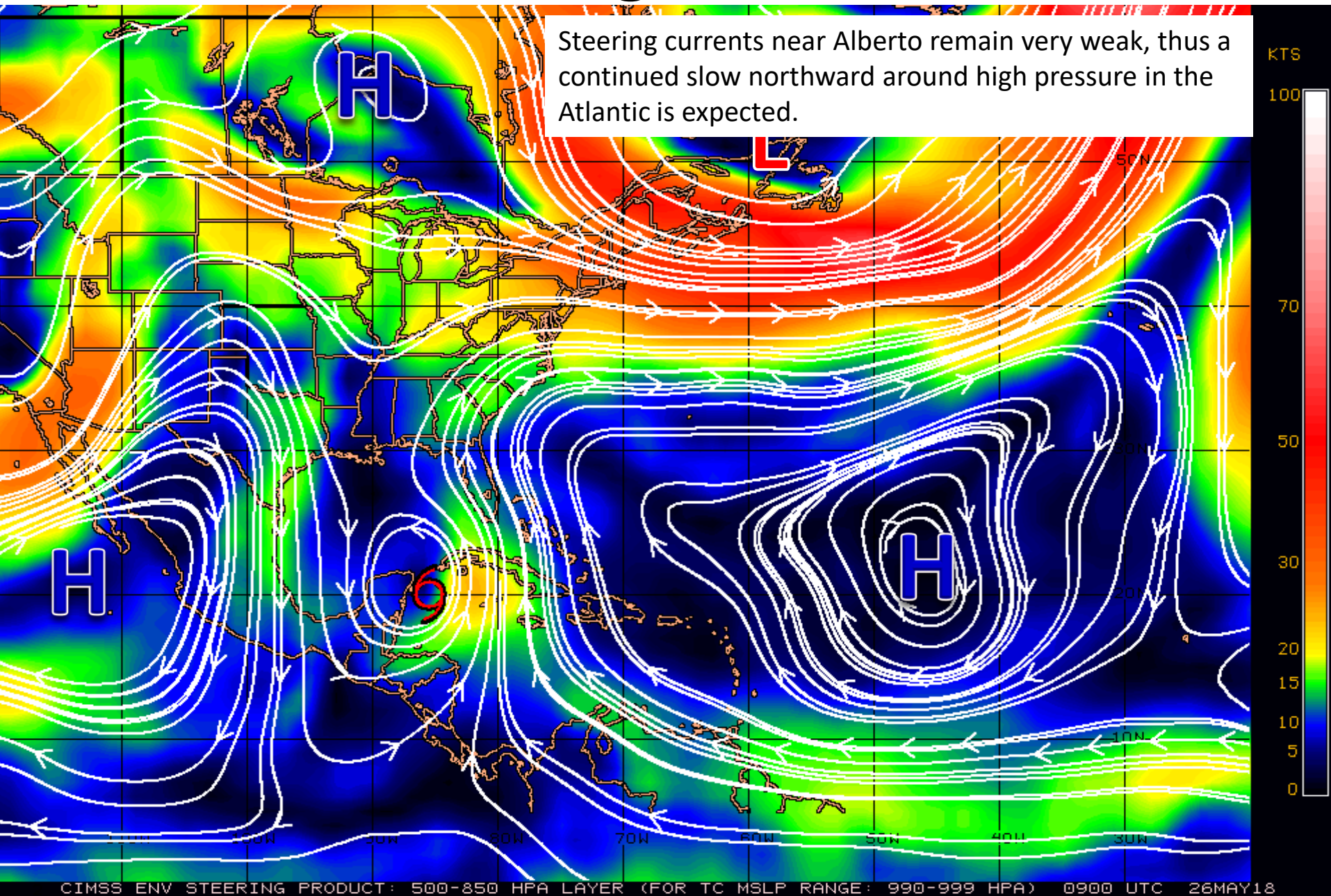
This update is intended for government and emergency response officials, and is provided for informational and situational awareness purposes only. Forecast conditions are subject to change based on a variety of environmental factors. For additional information, or for any life safety concerns with an active weather event please contact your County Emergency Management or Public Safety Office, local National Weather Service forecast office or visit the National Hurricane Center website at www.nhc.noaa.gov.

Caribbean / Gulf of Mexico Satellite Image

10:30 26-MAY-2018 GMT Copyright © 1998-2018 MSI Corporation <http://www.msi.com>

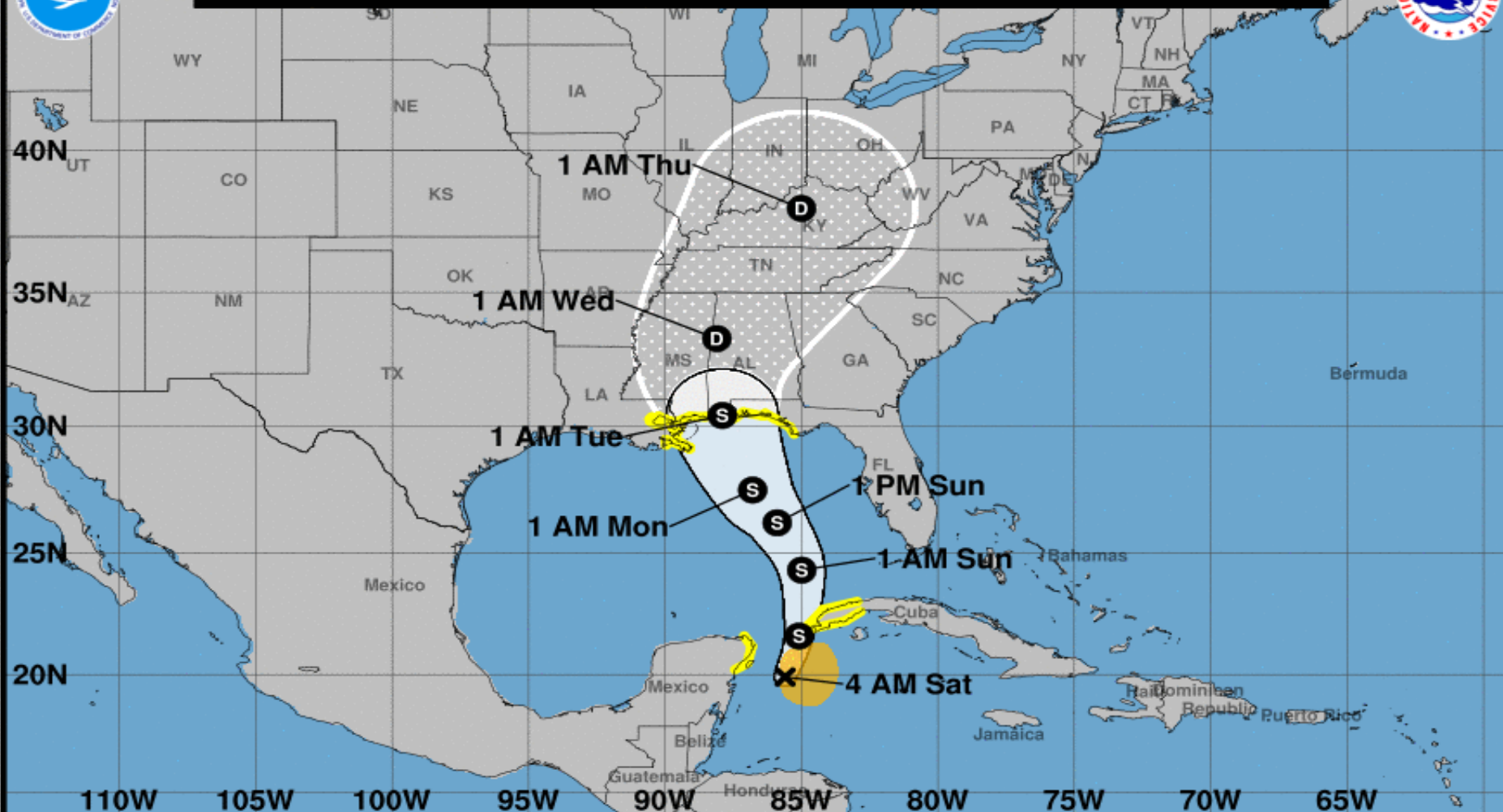


Steering Currents





Note: The cone contains the probable path of the storm center but does not show the size of the storm. Hazardous conditions can occur outside of the cone.



Subtropical Storm Alberto

Saturday May 26, 2018

4 AM CDT Advisory 4

NWS National Hurricane Center

Current information: X

Center location 19.9 N 85.6 W

Maximum sustained wind 40 mph

Movement NNE at 7 mph

Forecast positions:

● Tropical Cyclone ○ Post/Potential TC

Sustained winds: D < 39 mph

S 39-73 mph H 74-110 mph M > 110 mph

Potential track area:

Day 1-3 Day 4-5

Watches:

Hurricane Trop Stm

Warnings:

Hurricane Trop Stm

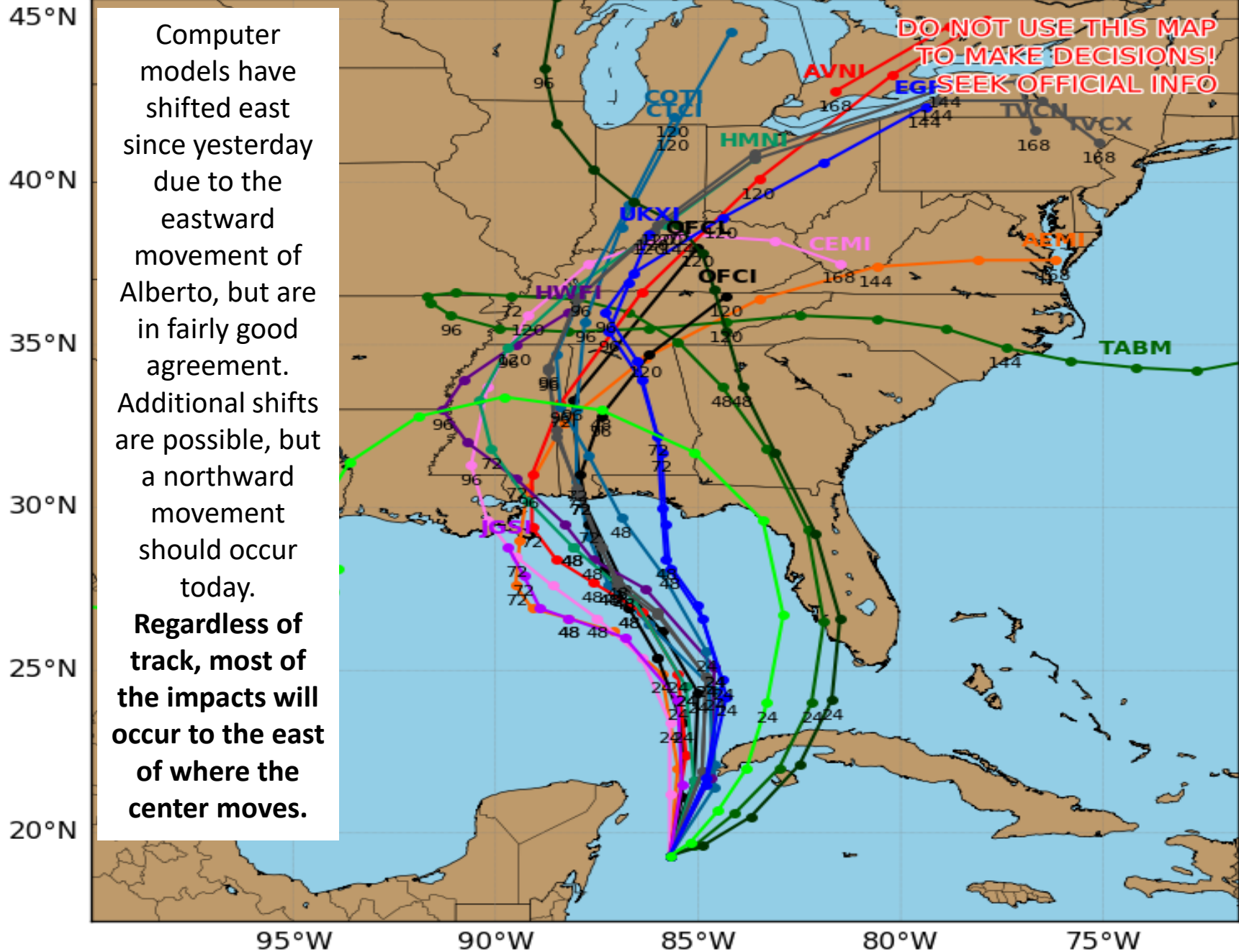
Current wind extent:

Hurricane Trop Stm

Subtropical Storm ALBERTO Model Track Guidance

Initialized at 06z May 26 2018

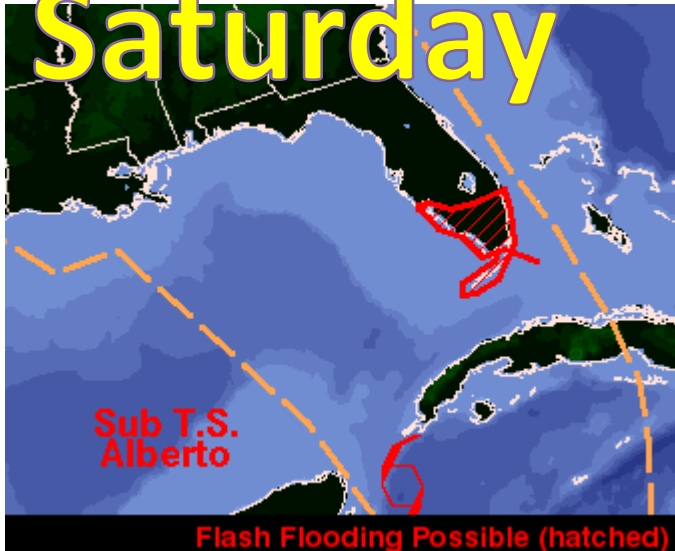
Levi Cowan - tropicaltidbits.com



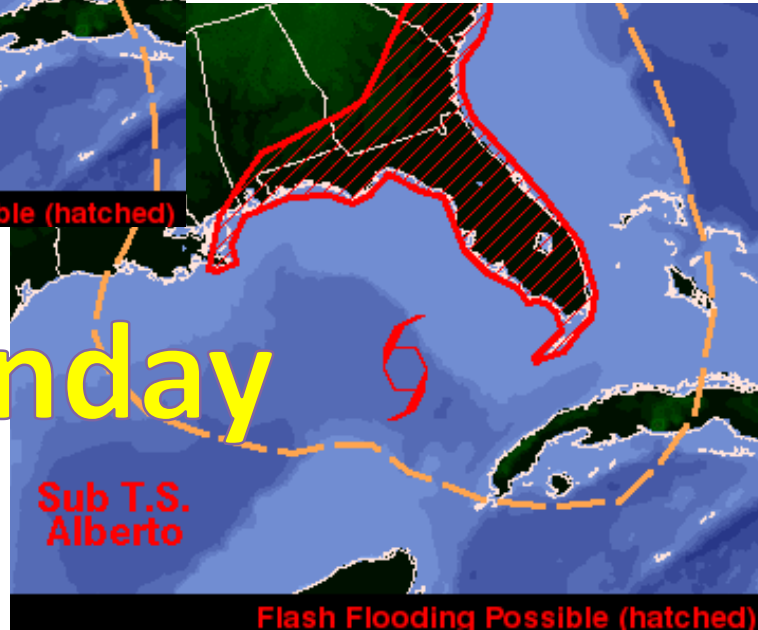
Forecast Weather Map – This Weekend

Saturday

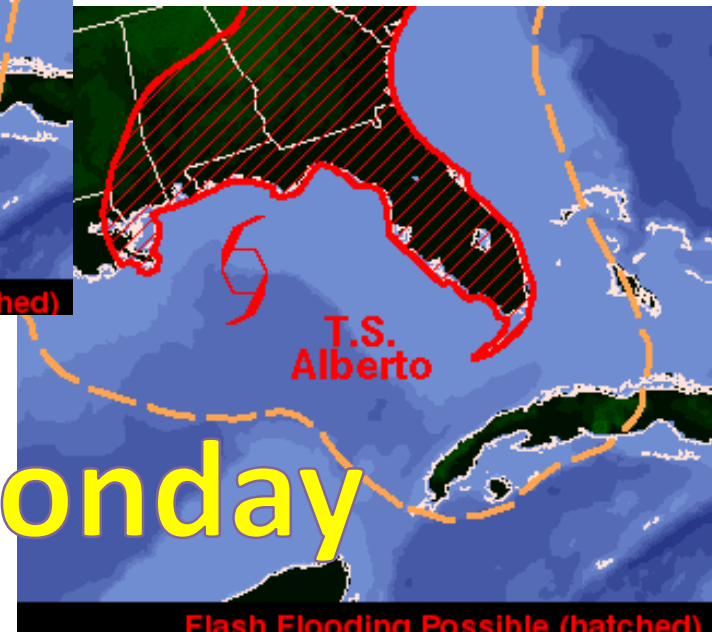
Alberto will affect all of Florida this weekend, with rain and isolated tornadic impacts beginning today in South Florida and spreading northward tonight into Sunday.



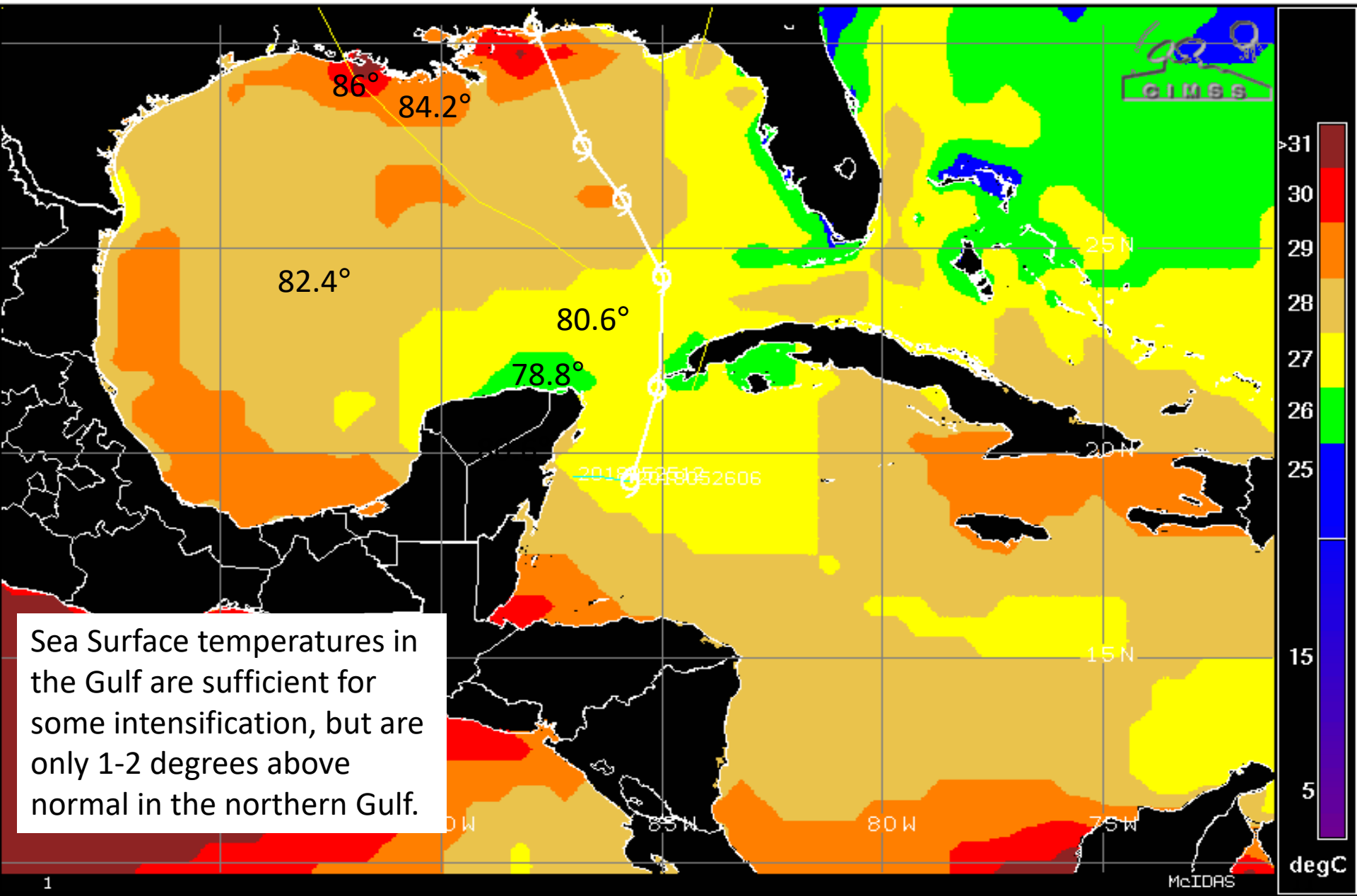
Sunday



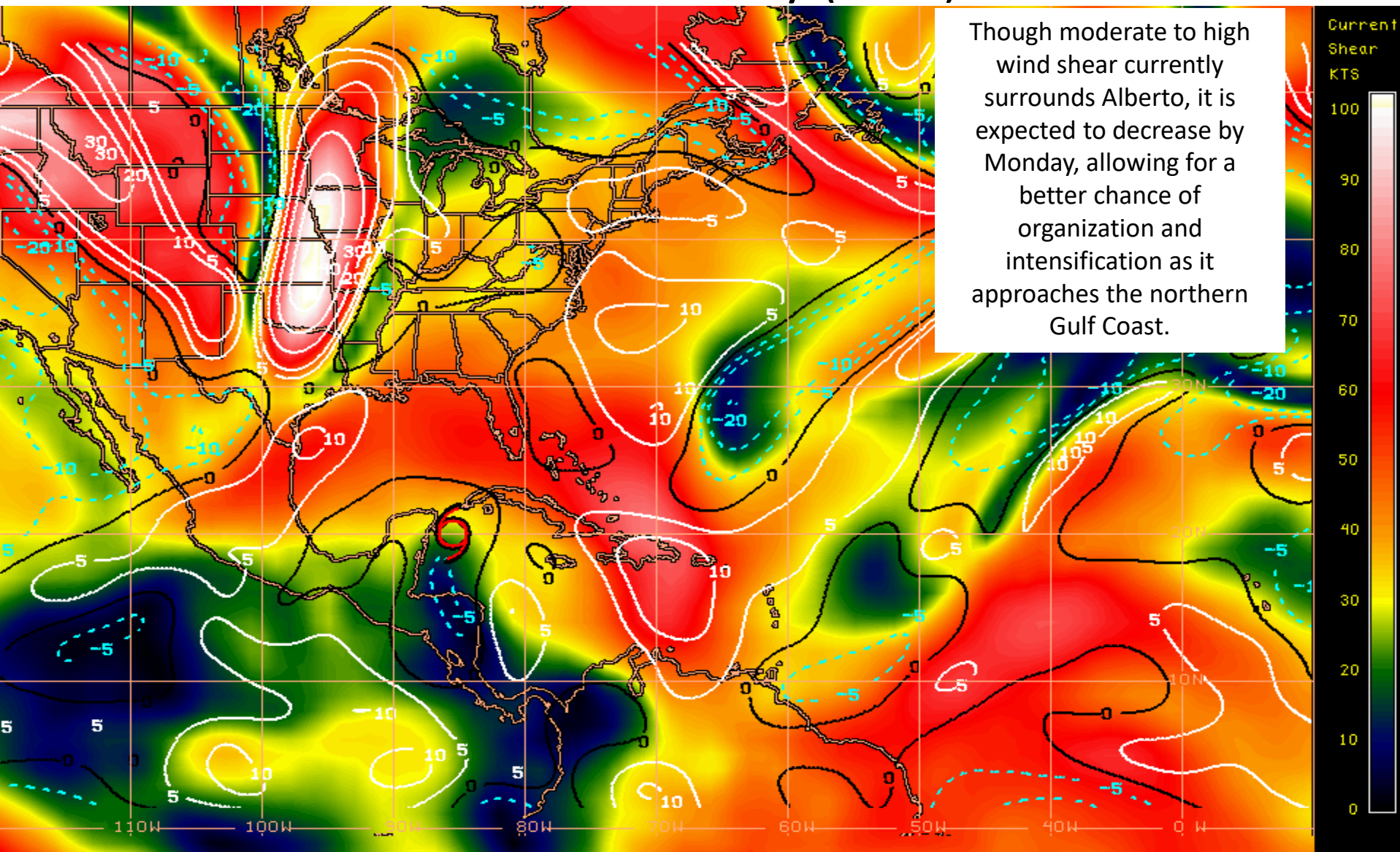
Monday



Current Sea Surface Temperatures



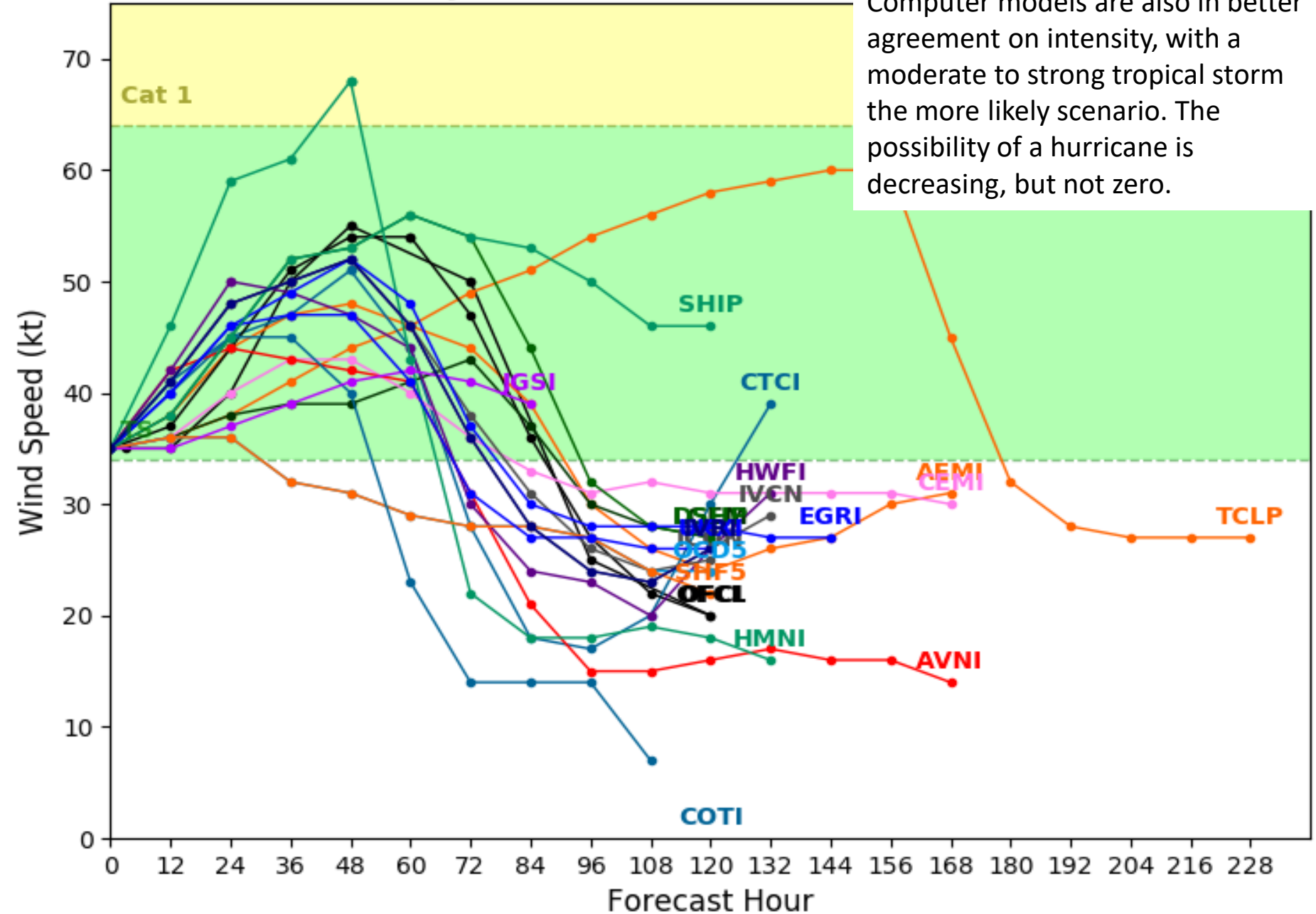
Current Wind Shear (shaded) and Shear Tendency (lines)



Shear Tendency (KTS) Over Past 24 Hours: Increasing — Decreasing ----

Subtropical Storm ALBERTO Model Intensity Guidance

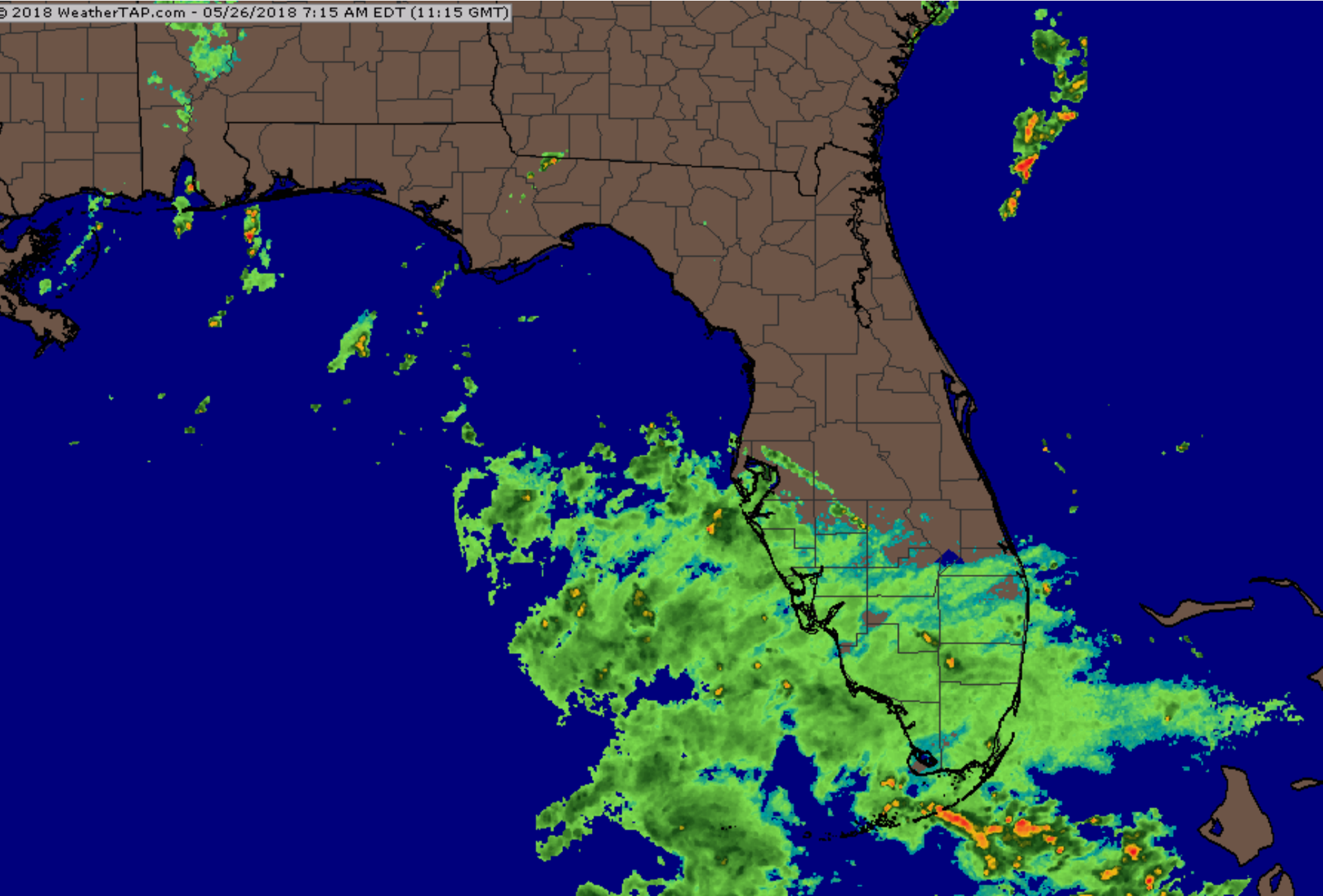
Initialized at 06z May 26 2018



Sustained Wind Speeds: ■ tropical storm $\geq 34\text{kt}/39\text{mph}$ ■ strong tropical storm $\geq 50\text{kt}/58\text{mph}$ ■ hurricane $\geq 64\text{kt}/74\text{mph}$

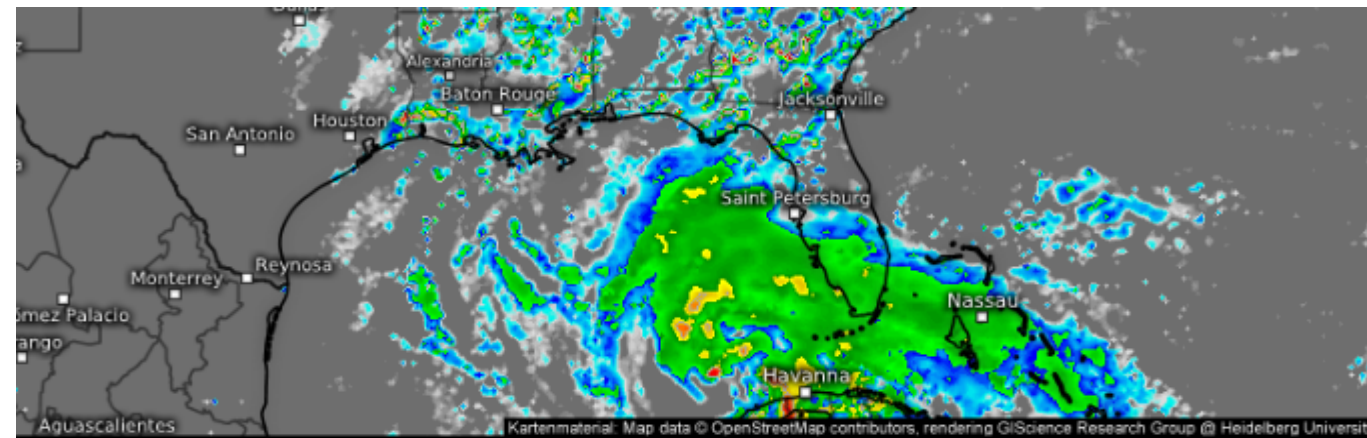
Current Radar as of 7:15 AM

© 2018 WeatherTAP.com - 05/26/2018 7:15 AM EDT (11:15 GMT)



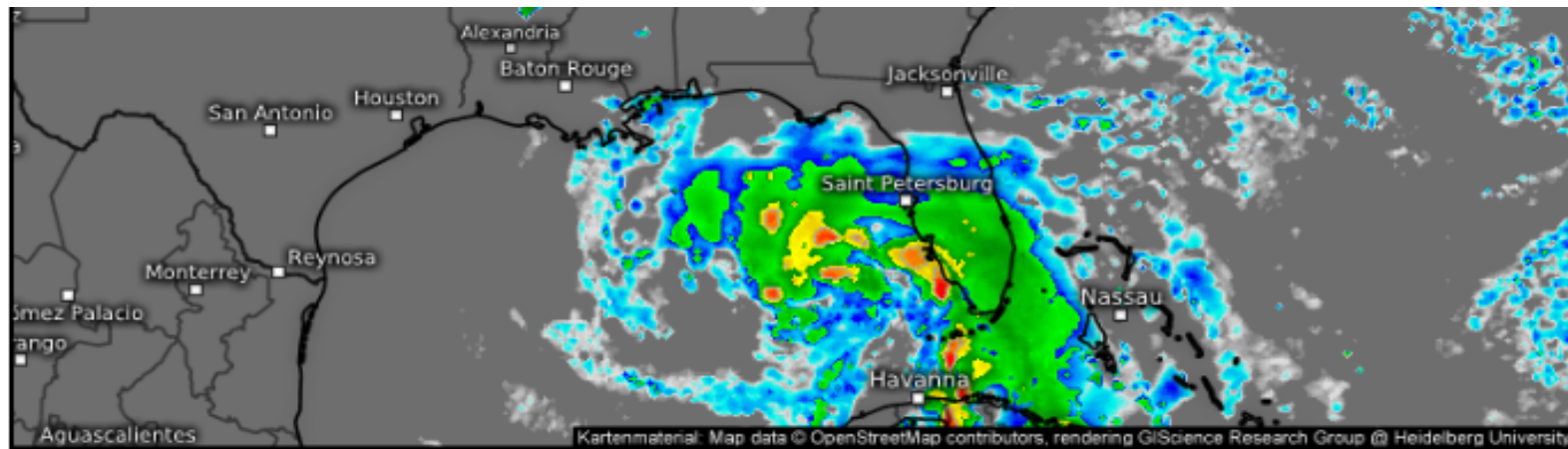
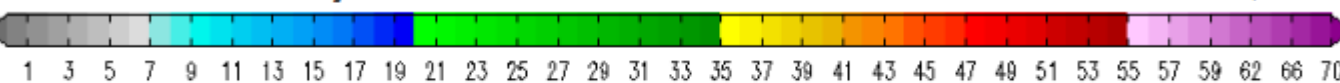
Forecast Radar Simulations

Showers and storms may will spread northward into South and Central Florida throughout the day. Heavy rain is possible overnight along the Southwest Florida Coast.



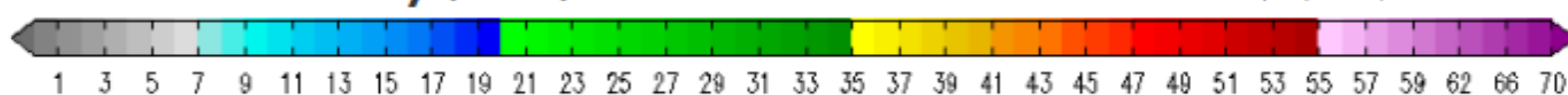
Base reflectivity (dBZ)

Valid for
05/26/2018, 01:00pm CDT

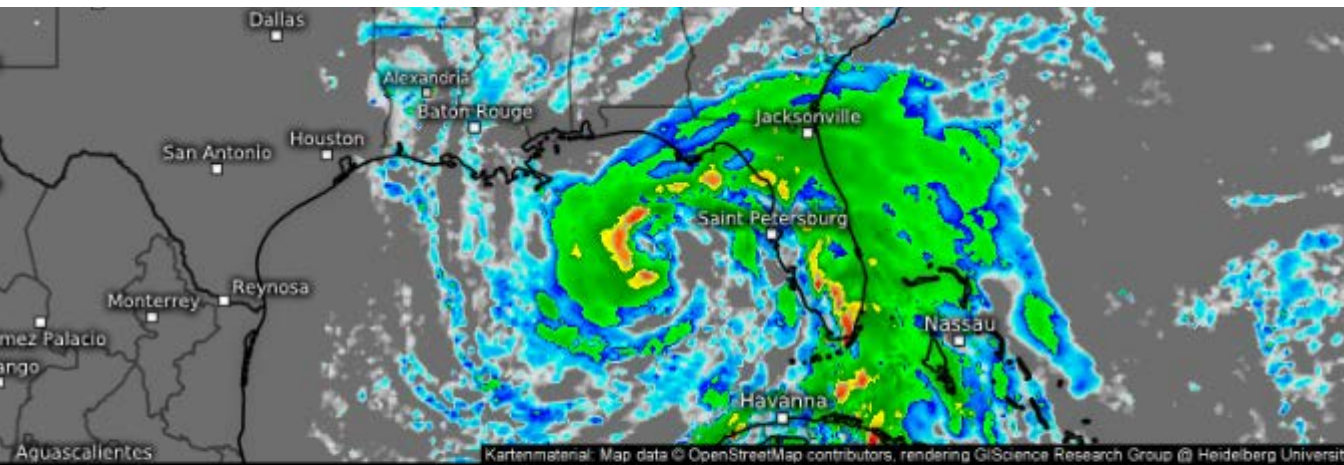


Base reflectivity (dBZ)

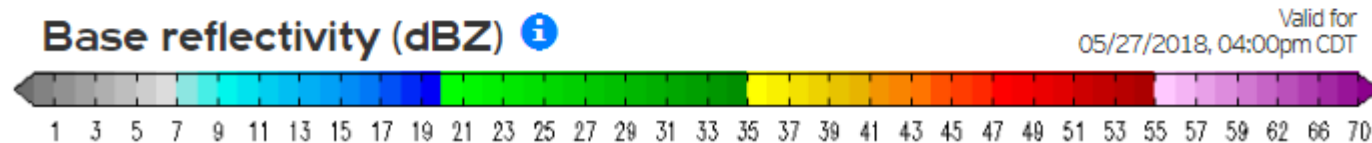
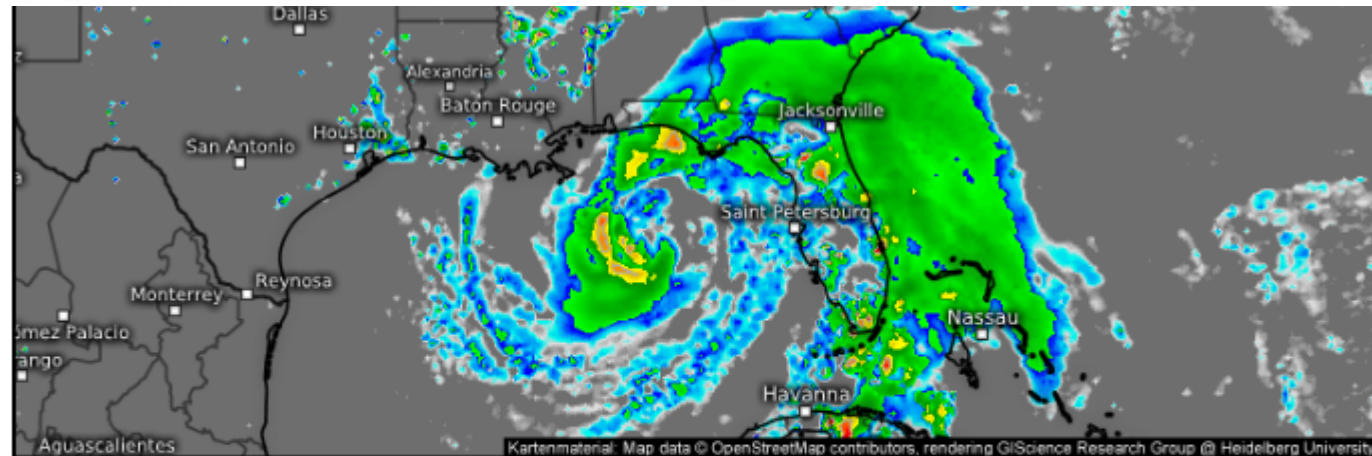
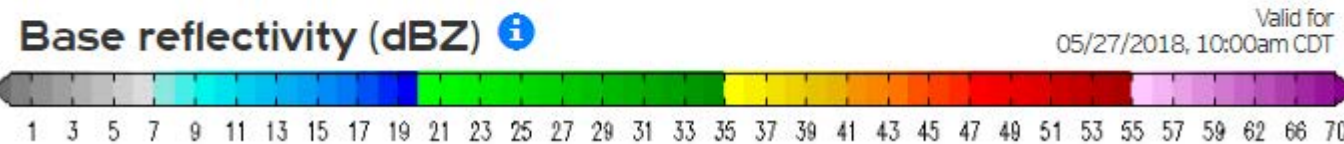
Valid for
05/27/2018, 01:00am CDT



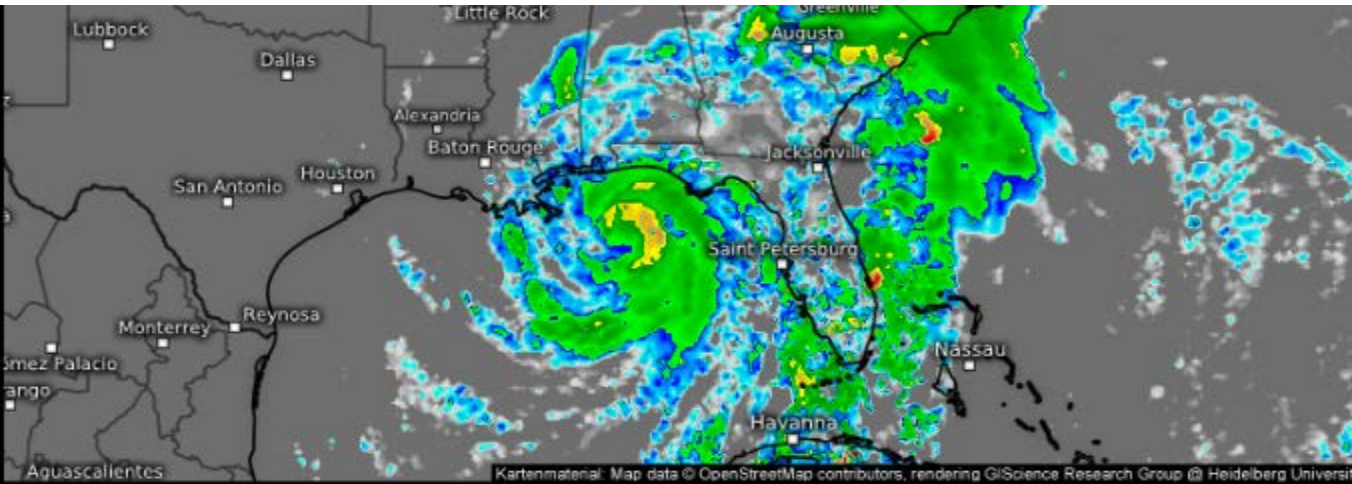
Forecast Radar Simulations



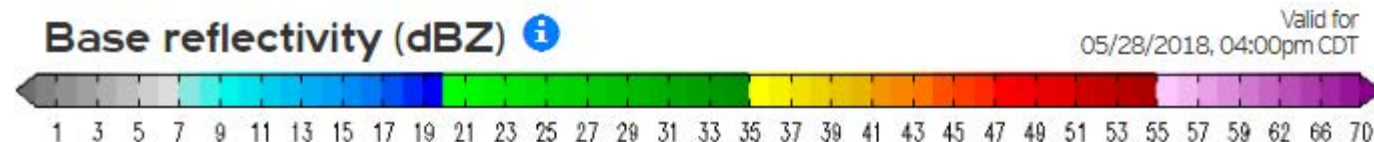
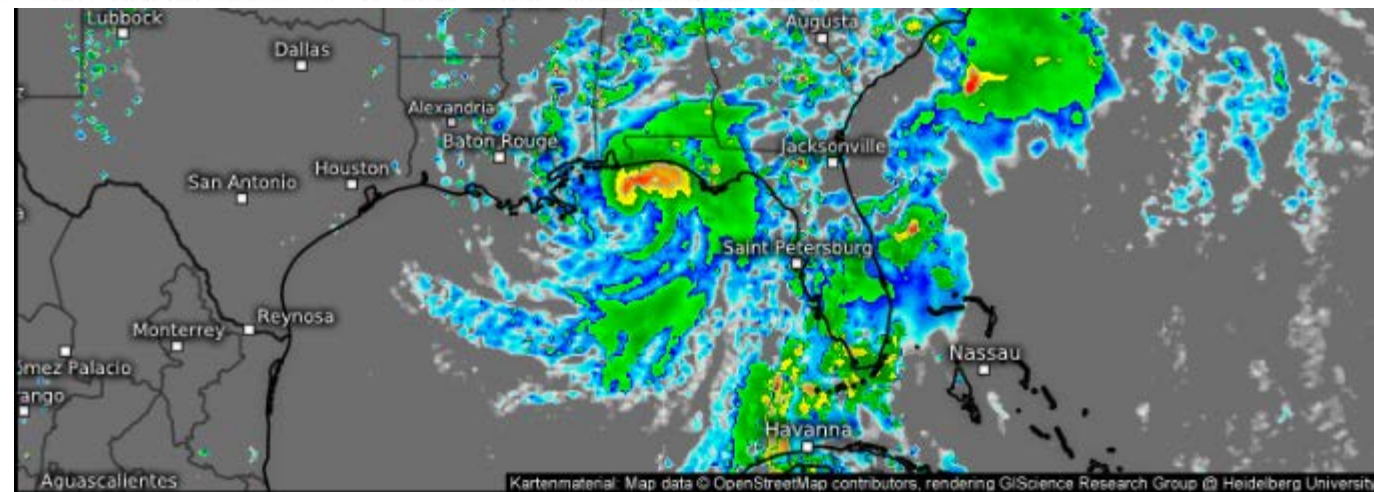
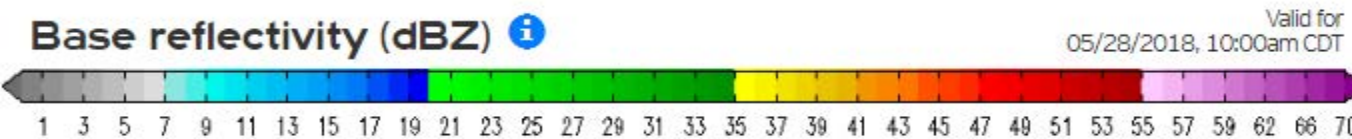
Widespread
showers and
storms will affect
all of Florida
Sunday.



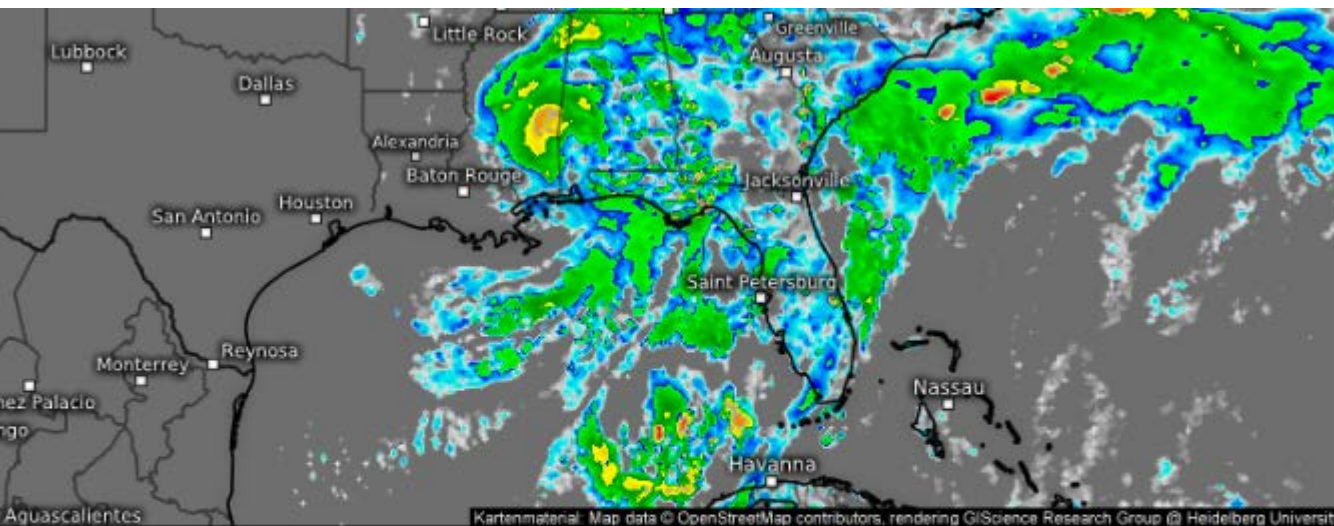
Forecast Radar Simulations



Showers and storms will continue to affect the state on Monday.



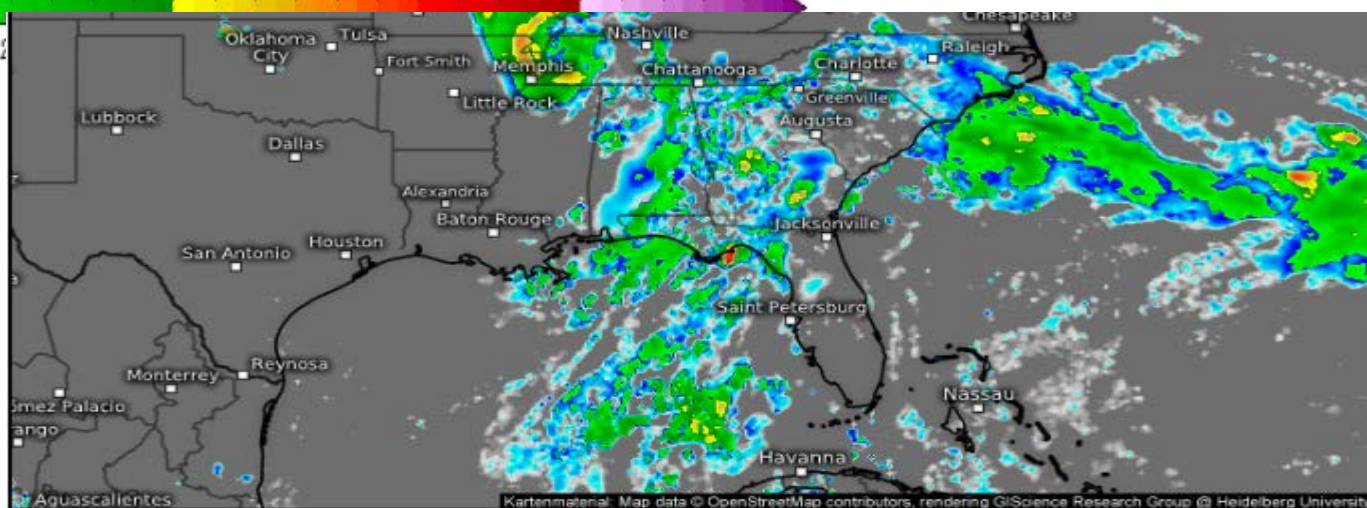
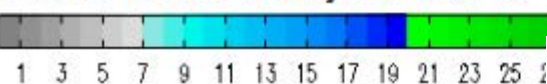
Forecast Radar Simulations



Showers and storms may linger throughout Tuesday statewide and continue to affect the Panhandle on Wednesday.

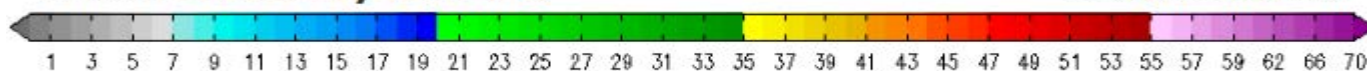
Base reflectivity (dBZ) 

Valid for
05/29/2018, 10:00am CDT



Base reflectivity (dBZ) 

Valid for
05/30/2018, 07:00am CDT



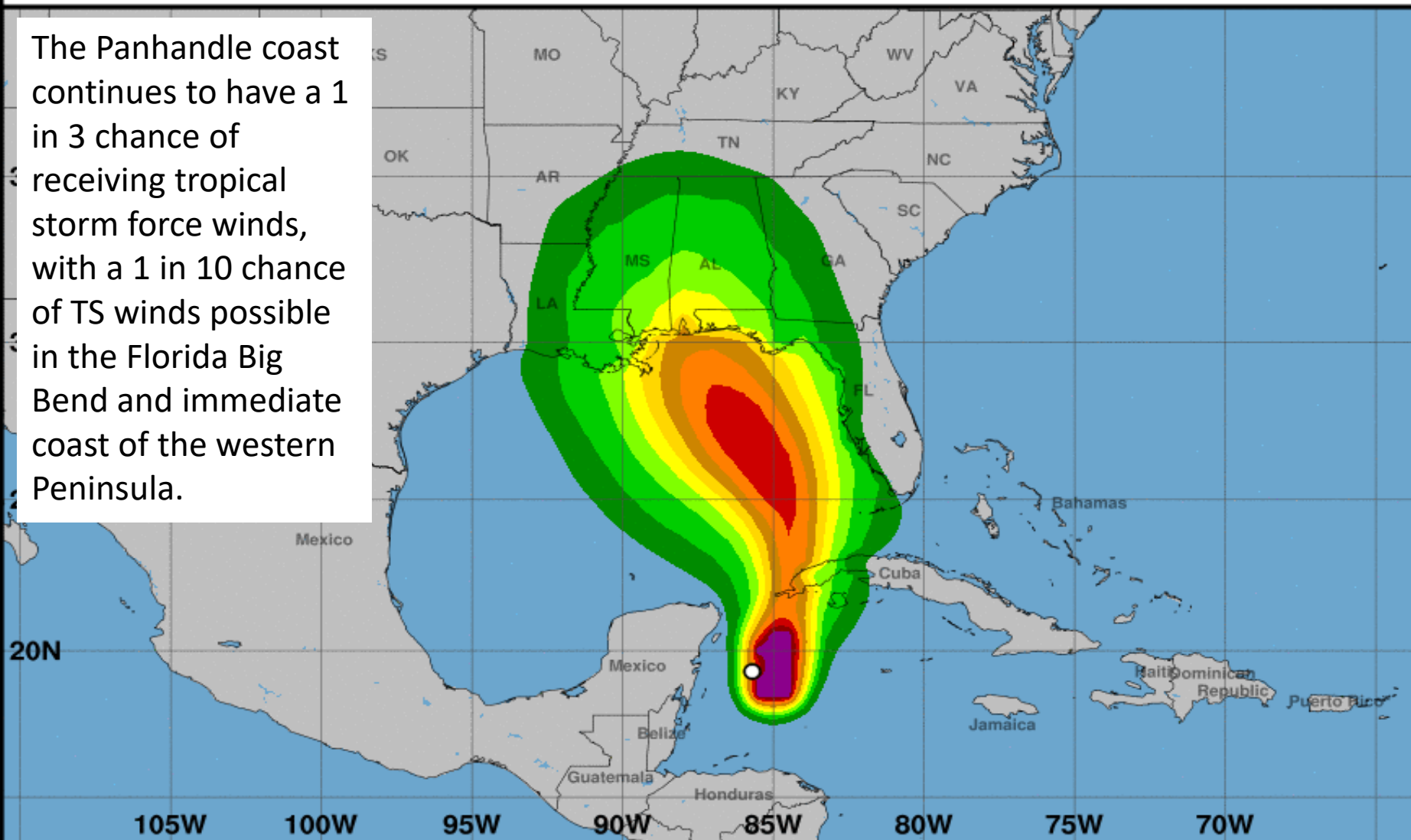


Tropical-Storm-Force Wind Speed Probabilities (Preliminary)

For the 120 hours (5.0 days) from 1 AM CDT SAT MAY 26 to 1 AM CDT THU MAY 31



The Panhandle coast continues to have a 1 in 3 chance of receiving tropical storm force winds, with a 1 in 10 chance of TS winds possible in the Florida Big Bend and immediate coast of the western Peninsula.

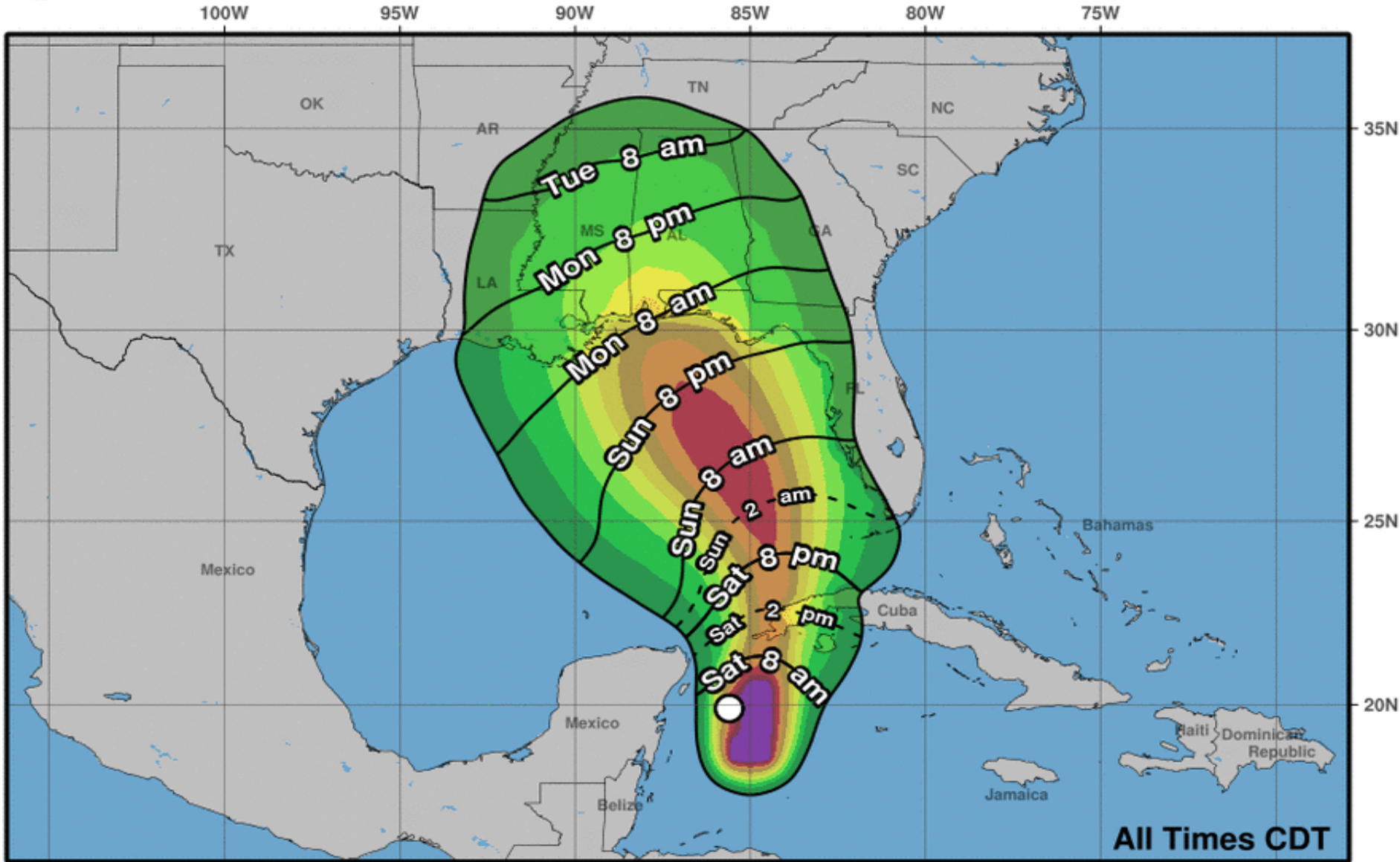


Probability of tropical-storm-force winds (1-minute average ≥ 39 mph) from all tropical cyclones
○ indicates Subtropical Storm Alberto center location at 1 AM CDT SAT MAY 26, 2018 (Forecast/Advisory #4)





Most Likely Arrival Time of Tropical-Storm-Force Winds



All Times CDT

Subtropical Storm Alberto
Sat. May. 26, 2018 4 am CDT
Advisory 4

Storm Location & Wind Speed

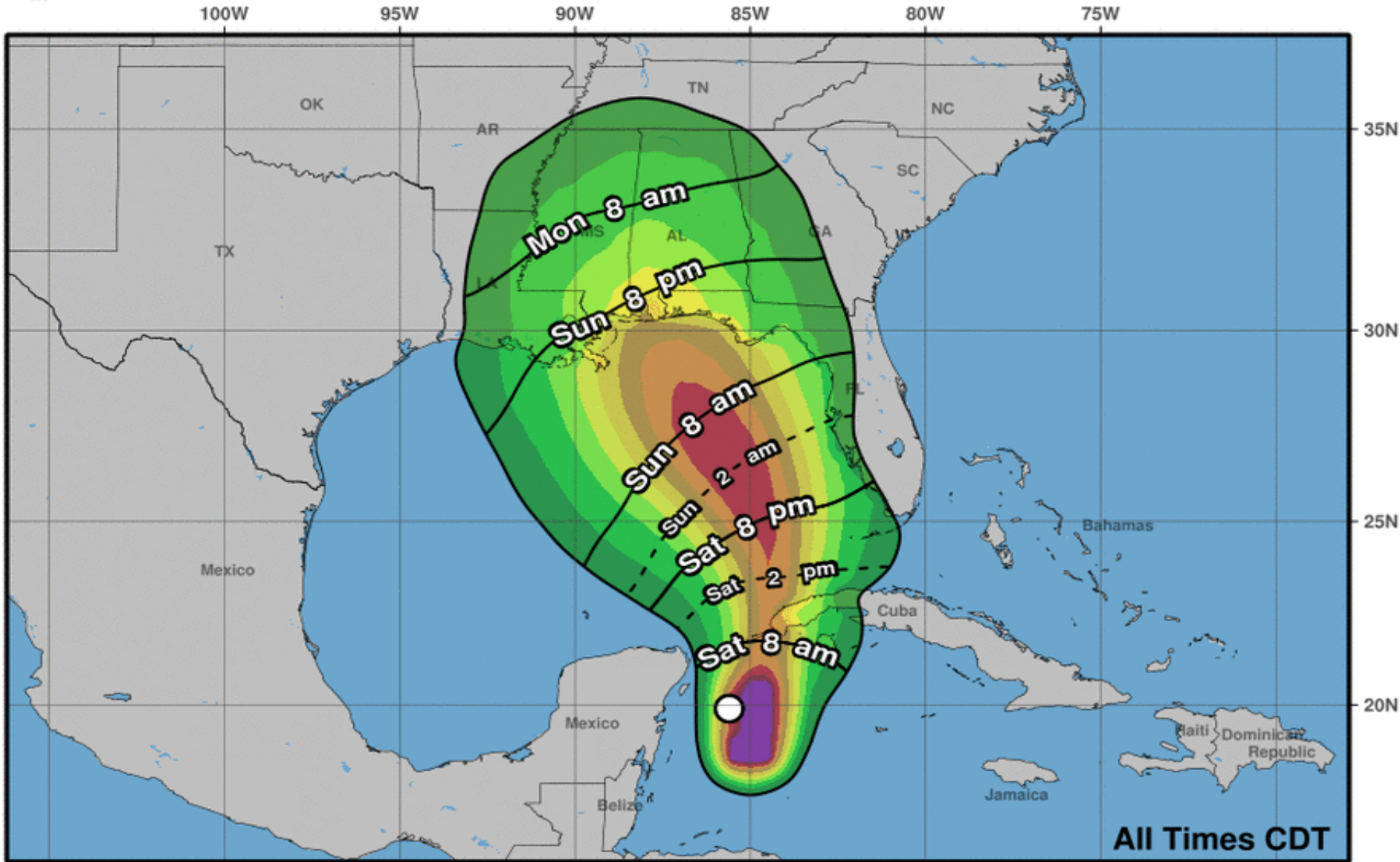
- < 34 kt (39 mph)
- 34-63 kt (39-73 mph)
- ≥ 64 kt (74 mph)

5-day chance of receiving sustained 34+ kt (39+ mph) winds

5 10 20 30 40 50 60 70 80 90 100 %



Earliest Reasonable Arrival Time of Tropical-Storm-Force Winds



Subtropical Storm Alberto
Sat. May. 26, 2018 4 am CDT
Advisory 4

Storm Location & Wind Speed

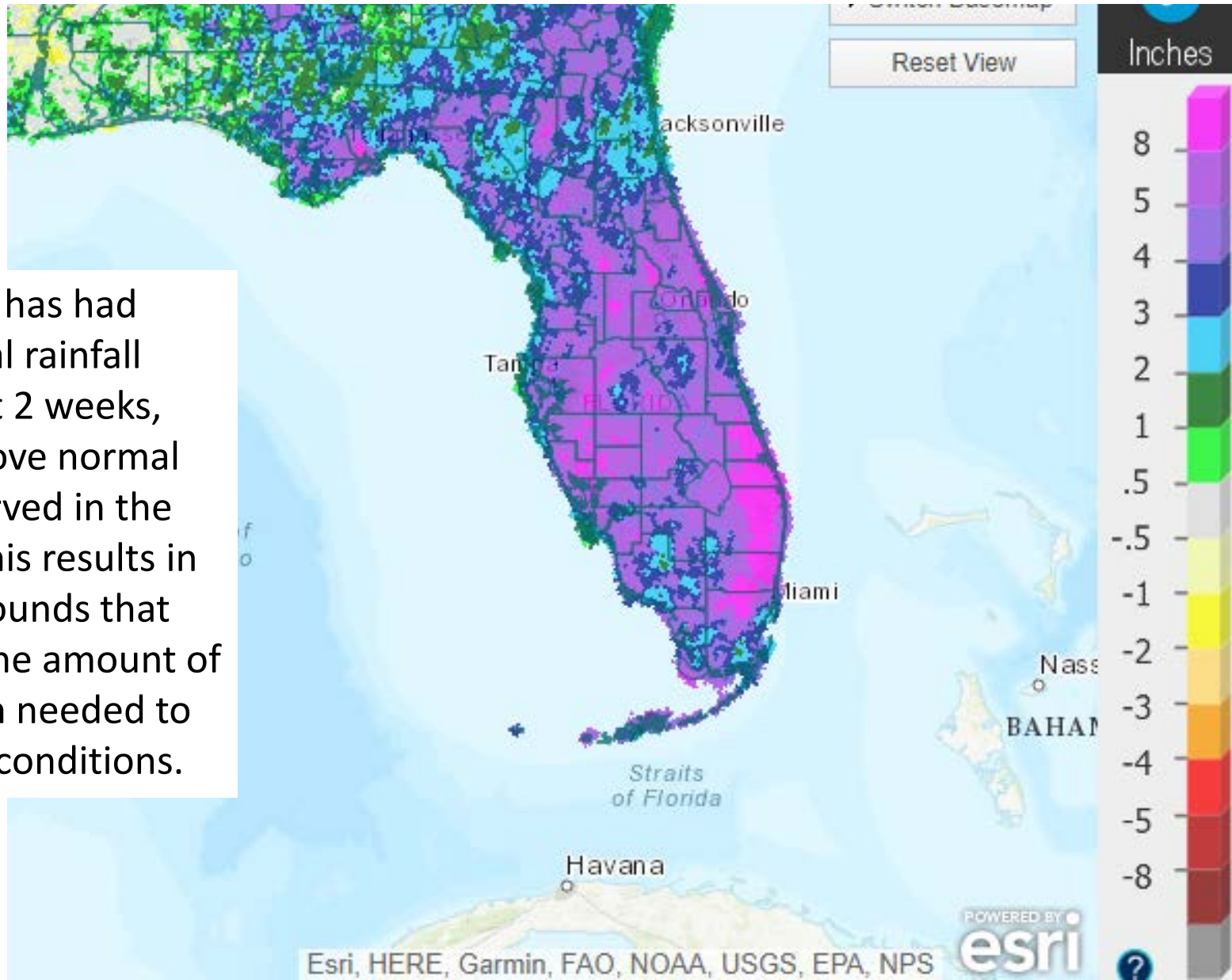
- < 34 kt (39 mph)
- 34-63 kt (39-73 mph)
- ≥ 64 kt (74 mph)

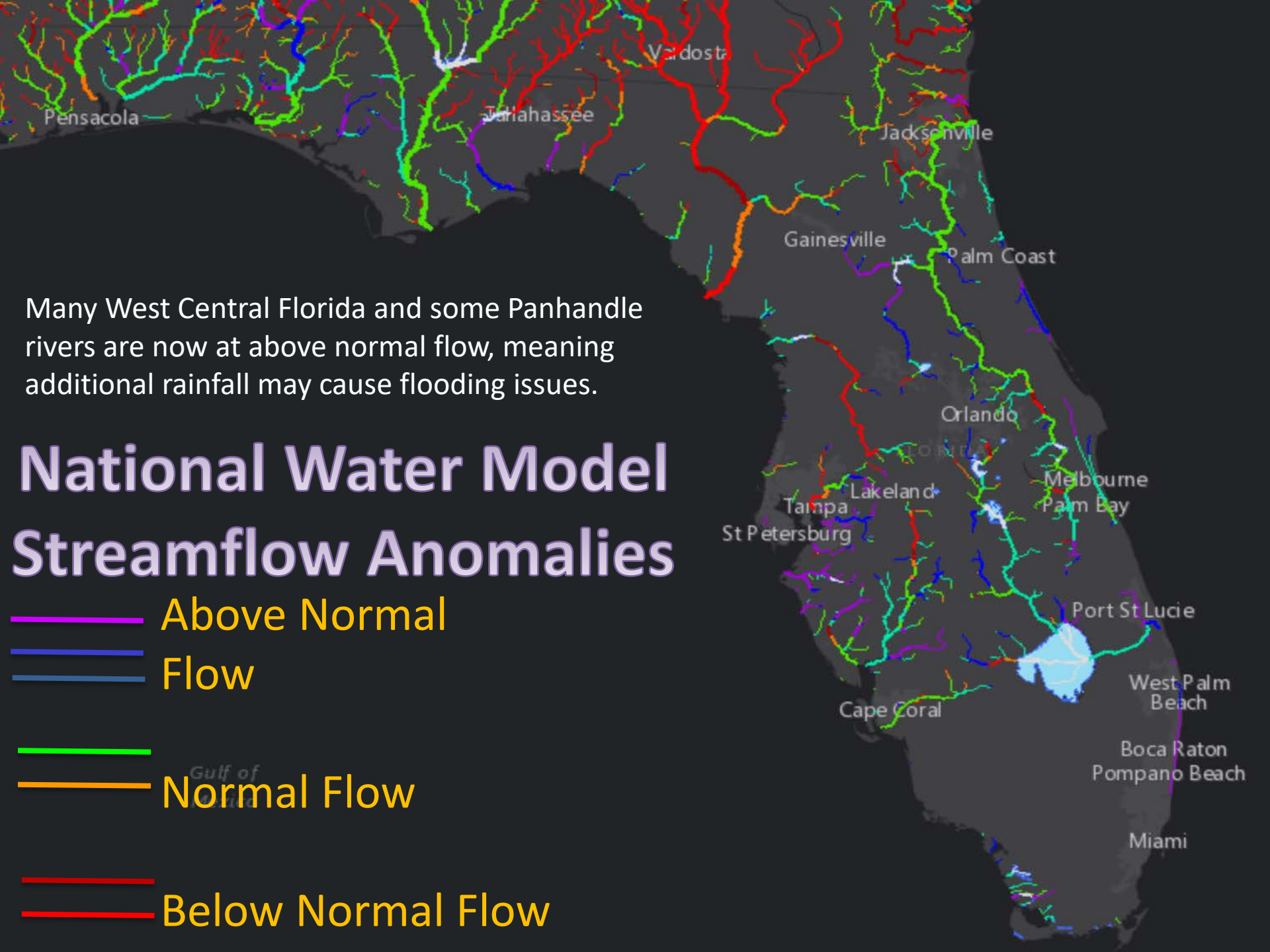
5-day chance of receiving sustained 34+ kt (39+ mph) winds

5 10 20 30 40 50 60 70 80 90 100 %

Rainfall Anomalies Over Past 14 Days


All of Florida has had above normal rainfall over the past 2 weeks, with well above normal rainfall observed in the Peninsula. This results in saturated grounds that will reduce the amount of time and rain needed to create flood conditions.



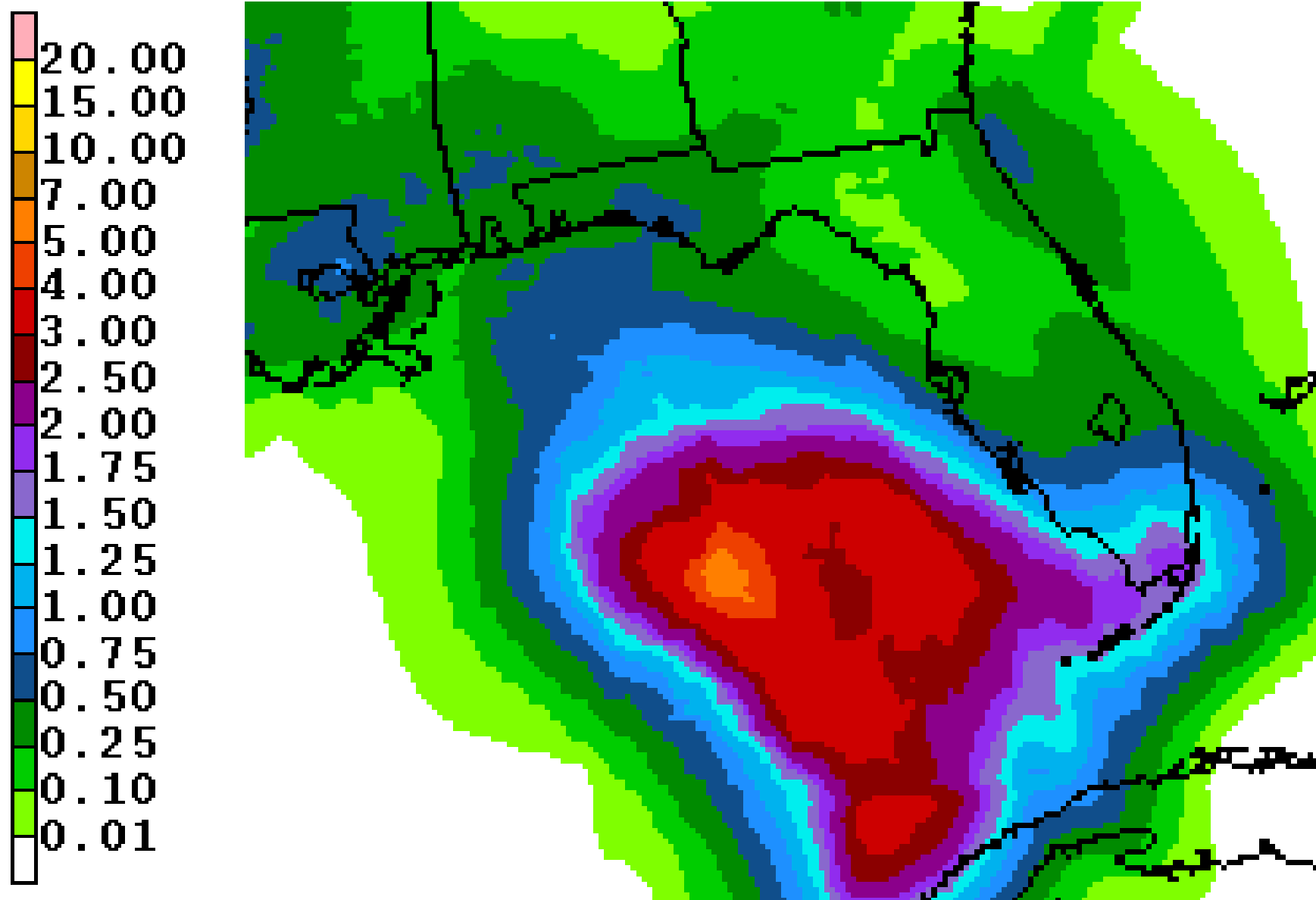


Many West Central Florida and some Panhandle rivers are now at above normal flow, meaning additional rainfall may cause flooding issues.

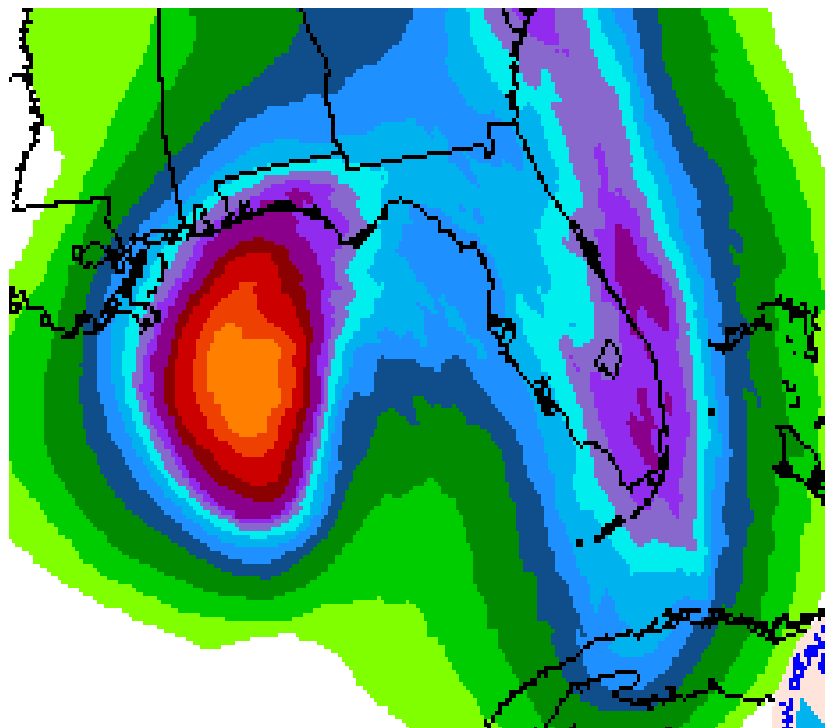
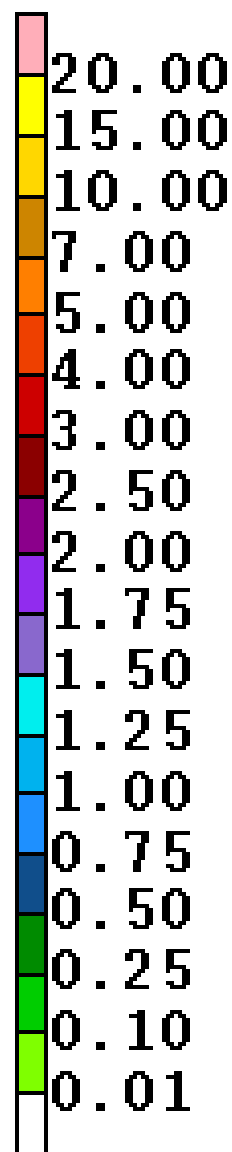
National Water Model Streamflow Anomalies

-  Above Normal
-  Flow
-  Normal Flow
-  Below Normal Flow

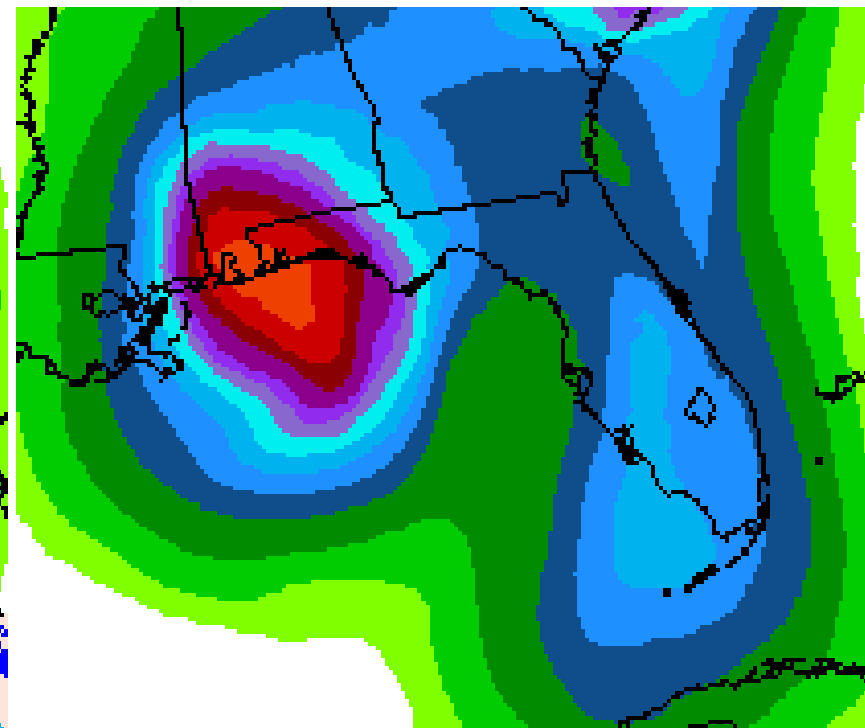
Forecast Total Rainfall Accumulations for Today



Forecast Total Rainfall Accumulations



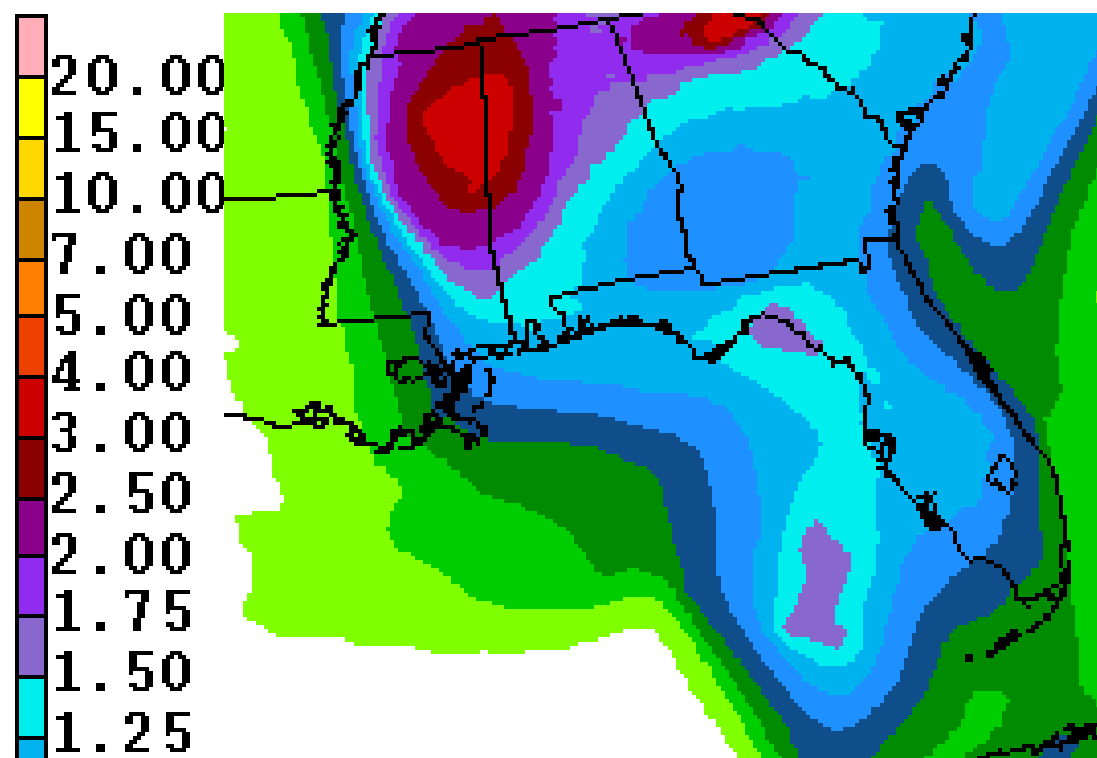
Sunday



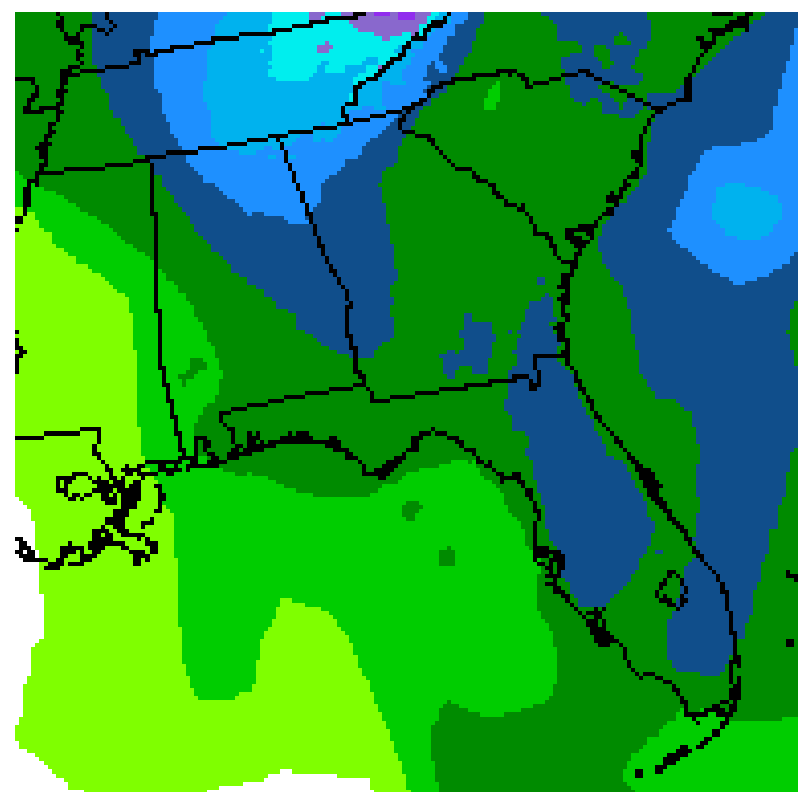
Monday

With the system expected to move very slowly near the coast, heavy rainfall will remain a possibility through Monday. A large rain band may extend well east of the center and could impact the Peninsula even with the center of the system near the western Panhandle.

Forecast Total Rainfall Accumulations

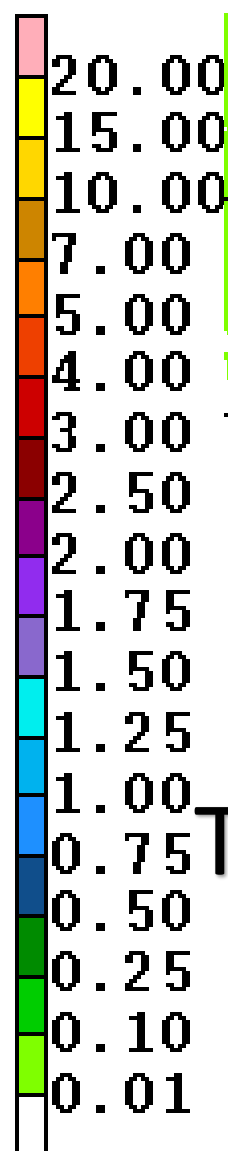


Tuesday-Wednesday



Thursday-Friday

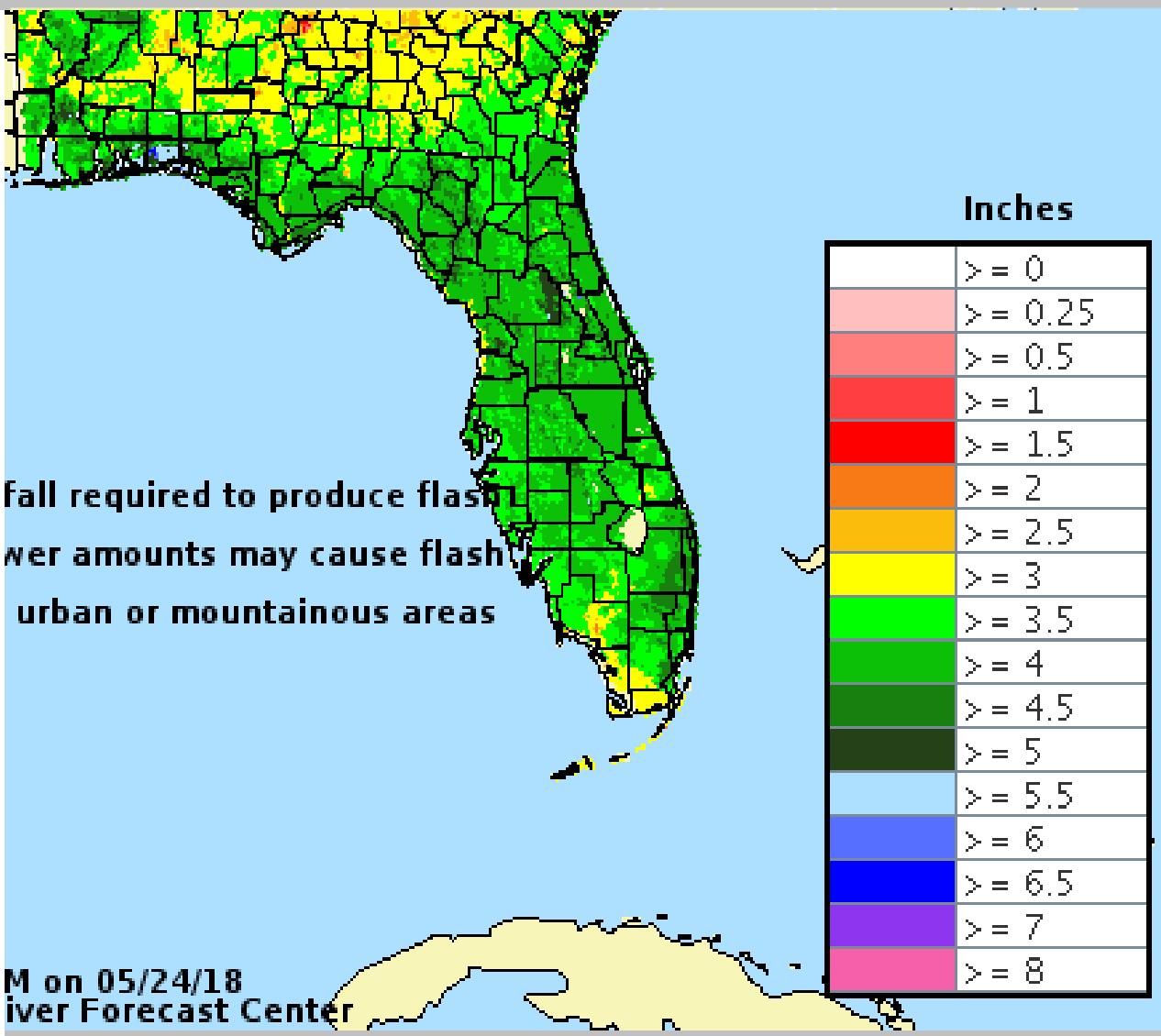
Lingering rains are possible through Tuesday and Wednesday before returning to normal conditions by Thursday.





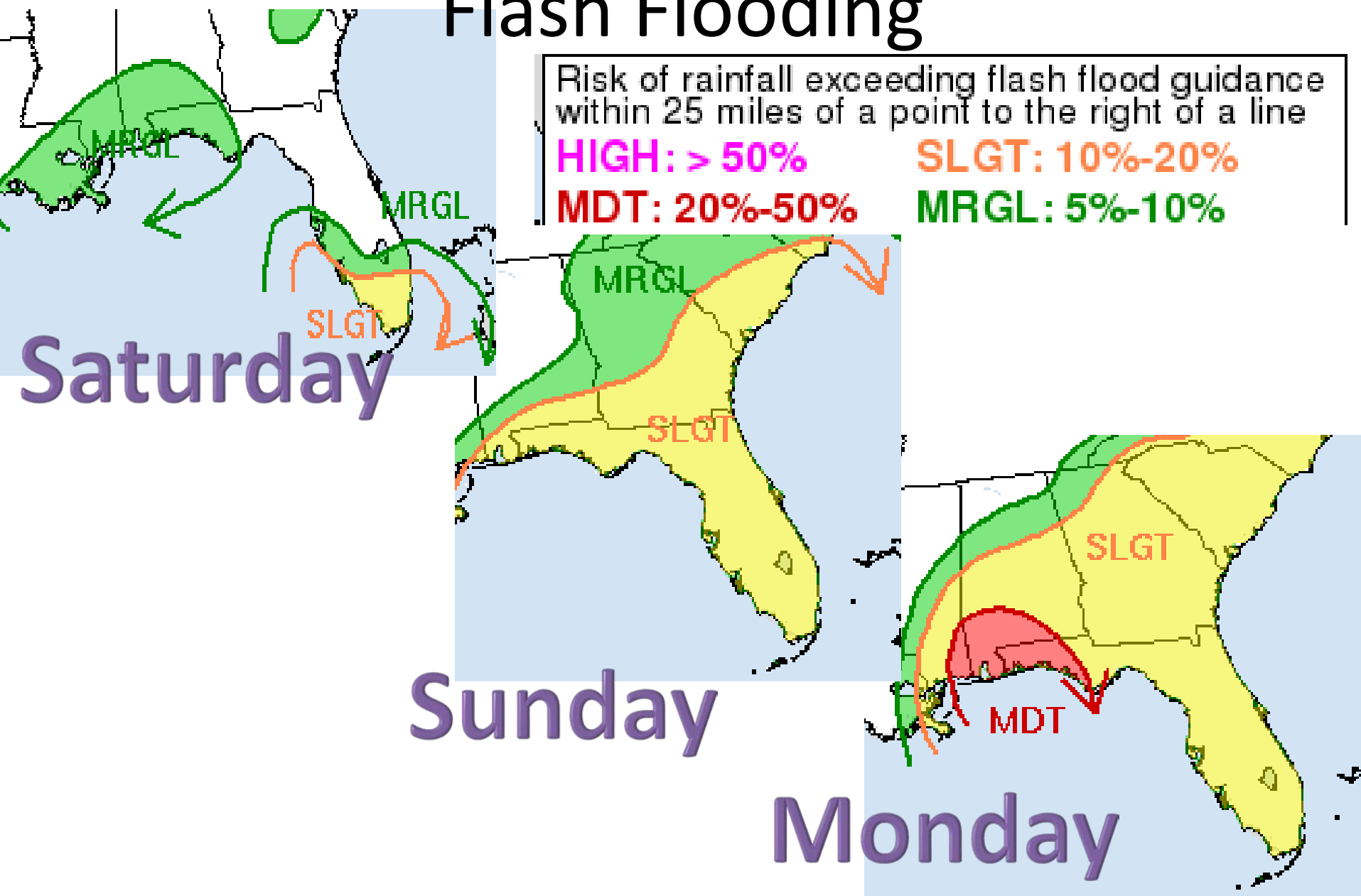
3-hr Flash Flood Guidance

Valid: 05/22/2018 @ 09:53 PM



- Since soils are already saturated, any additional heavy rain (generally 3-4" in 3 hours, 5-6" in 6 hours or 6-8" in 12 hours) will cause flash flooding issues.
- Lower amounts, or 3-6" over a longer time period can still cause flooding of roads and low-lying areas.

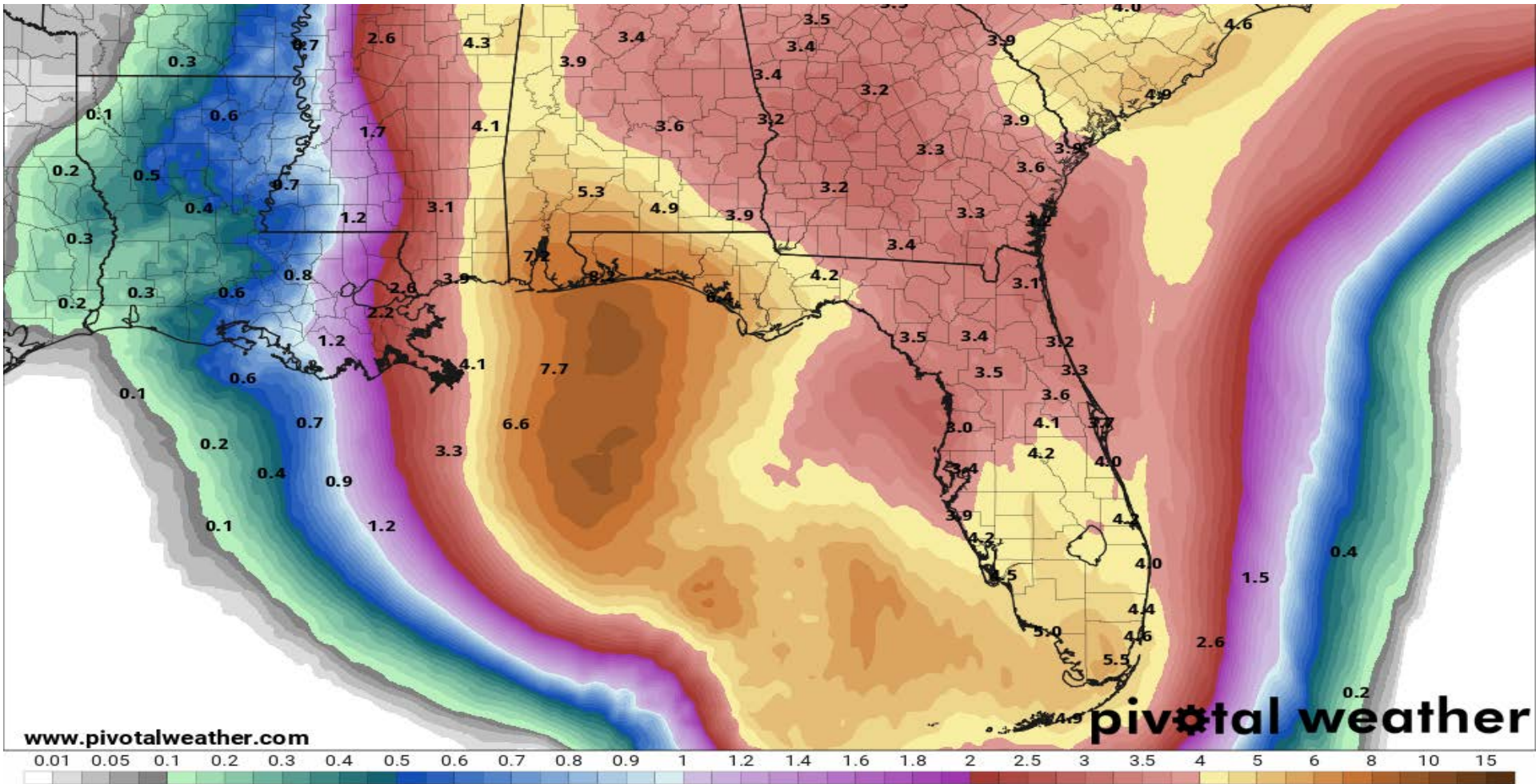
Excessive Rain Outlook – Risk for Flash Flooding



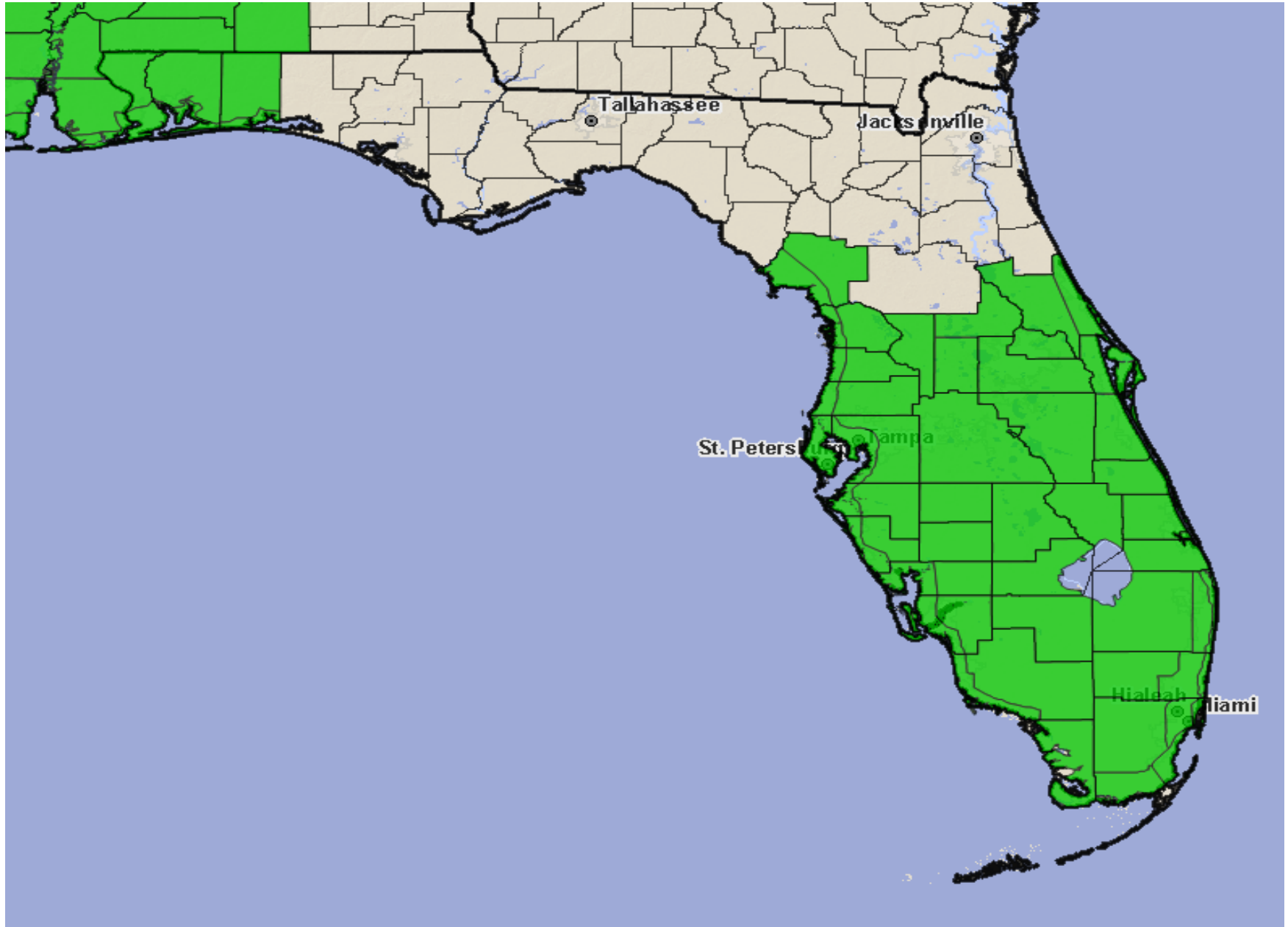
Forecast Total Rainfall Accumulations for next 7 Days

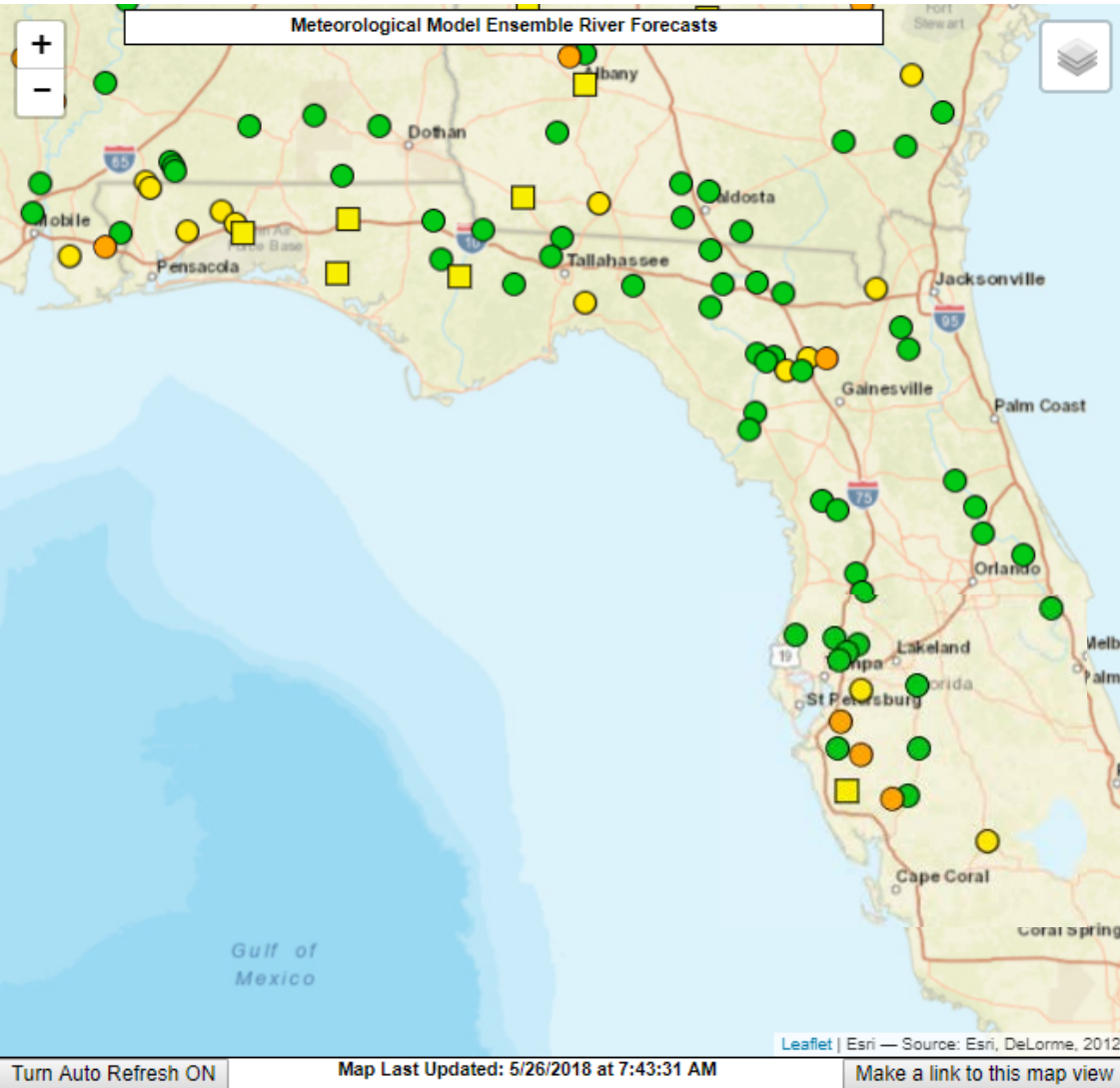
7-Day Precipitation (in)
Ending Saturday, Jun. 2, 2018 at 8 a.m. EDT Init: Sat 2018-05-26 12z WPC

EXACT RAINFALL AMOUNTS WILL DEPEND ON THE STRUCTURE AND TRACK OF ALBERTO, WHICH COULD BE HIGHER OR LOWER THAN WHAT IS SHOWN. At this time, widespread average rainfall amounts of 3-6" inches are possible statewide, with isolated higher totals of 7 to 13 inches possible over portions of the Panhandle and South Florida. This should result in street flooding and river flooding, especially in areas where several storms repeatedly move over the same area.













Active Flood Watches





7 Day Chance of River Flooding

In addition to the flash flooding potential, minor to moderate flooding on area rivers will be possible, but this will ultimately be dependent on where the heaviest rain falls. The areas for concern are currently in West Central Florida, the Florida Panhandle, and the Santa Fe River basin and Paynes Prairie State Park.

News Legend			
News Items less than 24 hours old		News Items 1 to 7 days old	
		No current News Items	
Map Legend			
Chance of Exceedance			River Forecast Centers
30%	Level	70%	
	Action		Middle Atlantic River Forecast Center
	Minor Flood		Northeast River Forecast Center
	Moderate Flood		Ohio River Forecast Center
	Major Flood		Southeast River Forecast Center
 = less than 30% chance of reaching Action level			
 = no critical levels defined for this point			

Storm Surge Watch



0 30 60mi

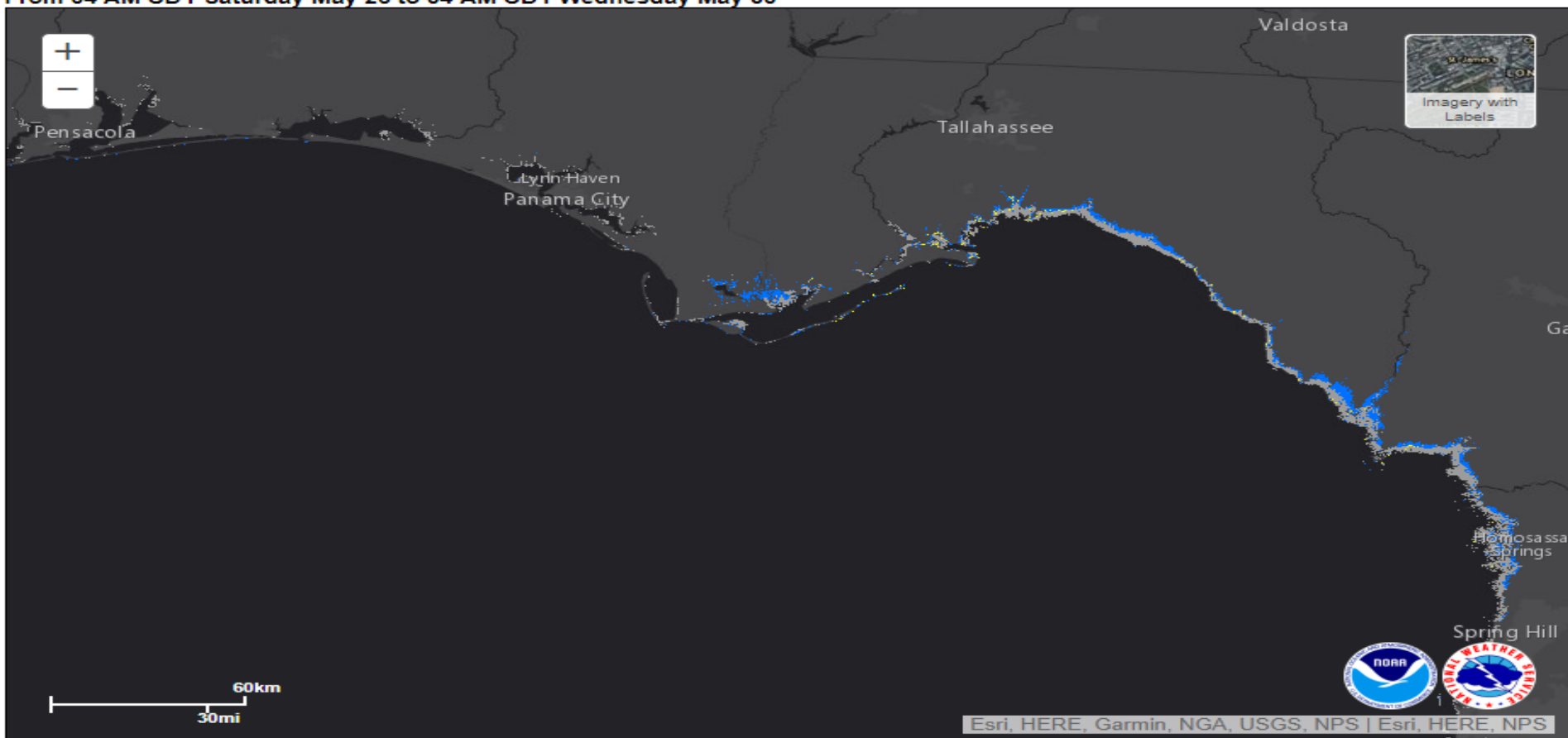
Storm Surge Warning
Storm Surge Watch

Potential Storm Surge Flooding Map (Inundation)


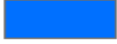



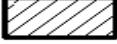
NHC Potential Storm Surge Flooding Map

Subtropical Storm ALBERTO (2018) Advisory 04

From 04 AM CDT Saturday May 26 to 04 AM CDT Wednesday May 30



Potential Storm Surge Flooding*

-  Intertidal Zone/Estuarine Wetland
-  Greater than 1 foot above ground
-  Greater than 3 feet above ground
-  Greater than 6 feet above ground
-  Greater than 9 feet above ground
-  Leveed area
- Consult local officials for flood risk

Map Layer Options:

Inundation Layer
Only

Inundation with
Intertidal Layer

Map Opacity Slider

Download GIS data
([Instructions](#))

[Inundation Layer Only](#)

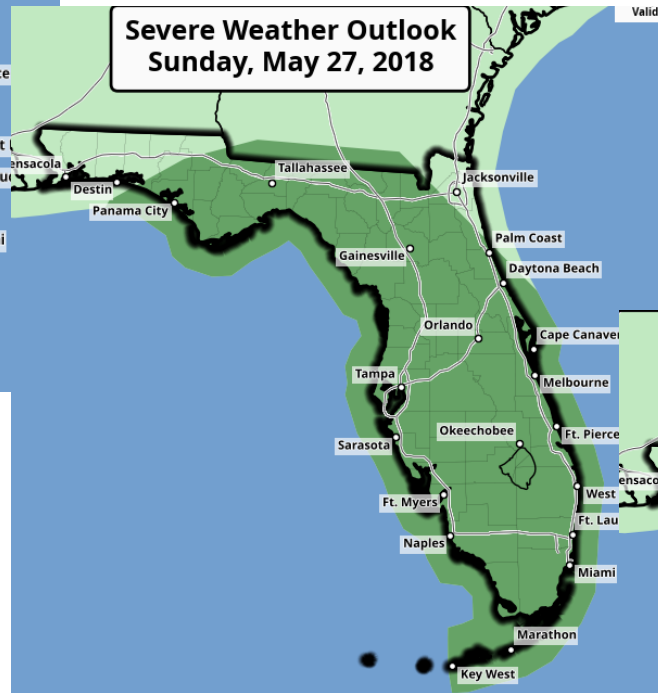
[Inundation with Intertidal Layer](#)

Severe Weather Outlook Saturday, May 26, 2018

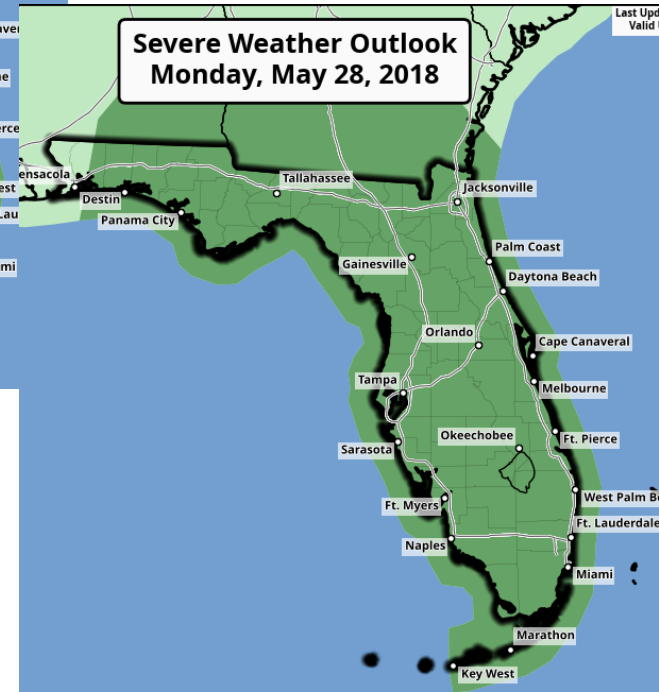


Tornado Risk

Severe Weather Outlook Sunday, May 27, 2018



Severe Weather Outlook Monday, May 28, 2018



5	High
4	Moderate
3	Enhanced
2	Slight
1	Marginal
	Thunder

Summary

- At 5am EDT Saturday, the center of Sub-Tropical Storm Alberto was located 70 miles south of the western tip of Cuba, which is also 420 miles southwest of Key West, Florida and 715 miles south of Panama City, Florida.
- Maximum sustained winds remain near 40mph and Alberto is moving north around 9mph. A north or north-northeastward motion is expected today, followed by a turn to the northwest on Sunday.
- On the forecast track, the center of Alberto is expected to move near the western tip of Cuba today, track across the eastern Gulf of Mexico Saturday night through Monday, and approach the northern Gulf Coast Monday night into early Tuesday.
- Computer models are getting into better agreement on track and intensity, but there is still a some uncertainty with regard to the timing of landfall of the system.
- Only slow strengthening is expected today due to the broad nature of the system and continued influences of wind shear and dry air. There is an opportunity for more strengthening tonight and Sunday and Alberto will likely make the transition to a classical tropical storm in about 36 hours.

Florida Outlook:

- Regardless of track or intensity, this system will result in a multi-day widespread rainfall event that may impact a large portion of Florida, beginning today in South Florida and then statewide Sunday and Monday. Lingering rains may continue through Tuesday or Wednesday.
- While the western Panhandle is within the 3 day cone, impacts will be felt across a majority of the state.
- A Tropical Storm Watch is in effect for the Escambia, Santa Rosa, Okaloosa, Walton, Bay, and Gulf counties.
- A Storm Surge Watch extends along the Panhandle Coast from the Escambia County east to Horseshoe Beach in Dixie County due to anticipated surge values of 2-4 feet.
- Flood Watches are in effect for Central and South Florida, as well as the western Panhandle. Additional Flood Watches may be issued today for portions of North Florida and the remainder of the Panhandle/Big Bend.
- Widespread rainfall amounts of 3-6" are expected statewide, with locally higher amounts of 7-12+" possible, especially for the Florida Panhandle and portions of South Florida.
- River flooding will also be a concern for portions of the state.
- Increased wave heights are also expected along the Panhandle and East Coast and will lead to a high risk of rip currents for the holiday weekend and into next week.
- There is a marginal risk of tornadoes along the West Coast of Florida today, and then for much of the state for Sunday and Monday. Tornado Watches may be issued.

Another briefing packet will be issued Saturday afternoon. For more information on this system visit the NHC website at www.nhc.noaa.gov



TROPICAL UPDATE

Created by:

Amy Godsey, Chief State Meteorologist
amy.godsey@em.myflorida.com

State Meteorological Support Unit
Florida Division of Emergency
Management

Users wishing to subscribe (approval pending) to this distribution list, register at https://public.govdelivery.com/accounts/FLDEM/subscriber/new?topic_id=SERT_Met_Tropics.

Other reports available for subscription are available at <https://public.govdelivery.com/accounts/FLDEM/subscriber/new?preferences=true>