



# TROPICAL UPDATE

9 AM EDT

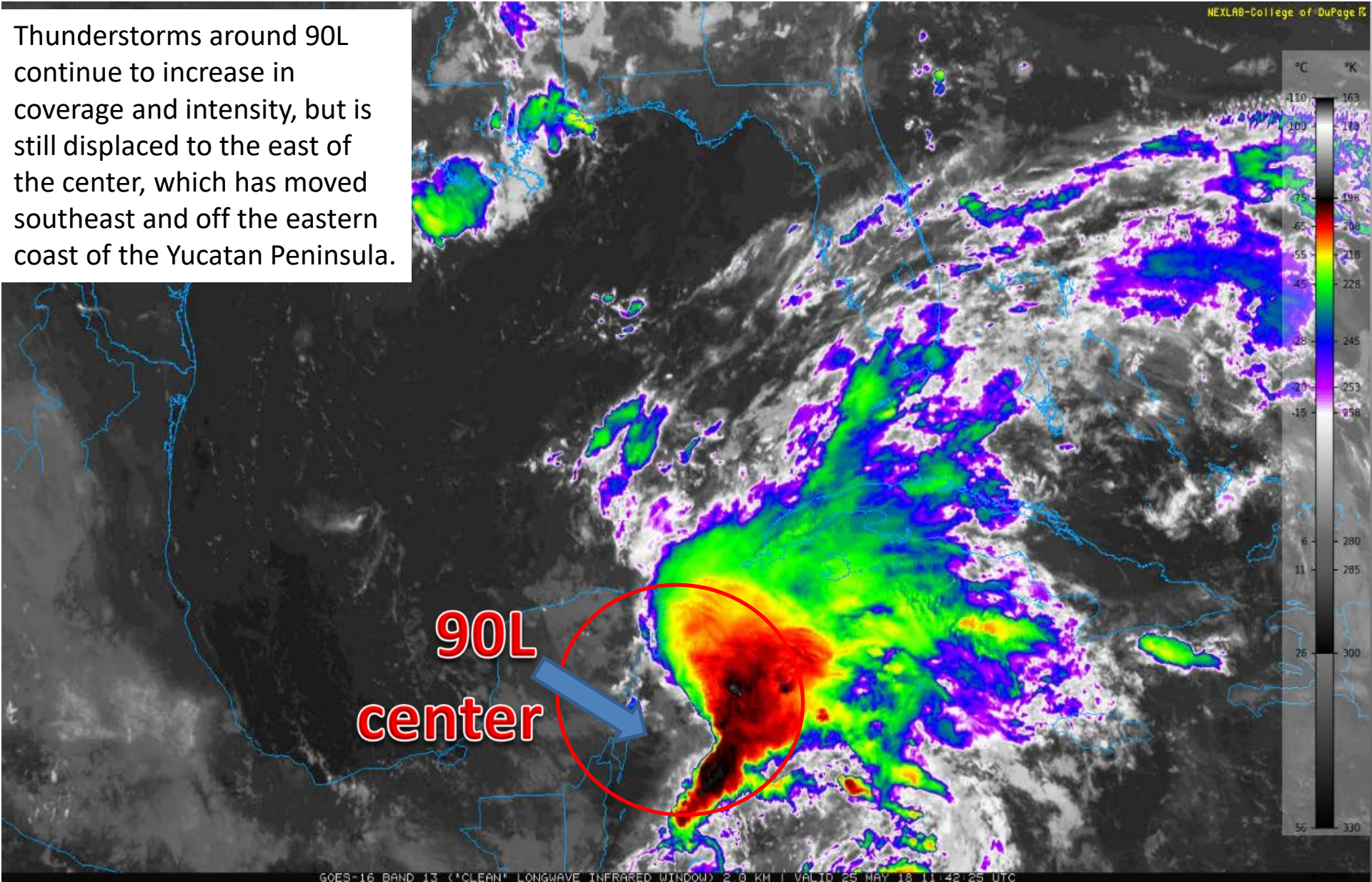
Friday, May 25, 2018

Invest Area 90L (90%)

This update is intended for government and emergency response officials, and is provided for informational and situational awareness purposes only. Forecast conditions are subject to change based on a variety of environmental factors. For additional information, or for any life safety concerns with an active weather event please contact your County Emergency Management or Public Safety Office, local National Weather Service forecast office or visit the National Hurricane Center website at [www.nhc.noaa.gov](http://www.nhc.noaa.gov).

# Gulf of Mexico Satellite Image

Thunderstorms around 90L continue to increase in coverage and intensity, but is still displaced to the east of the center, which has moved southeast and off the eastern coast of the Yucatan Peninsula.

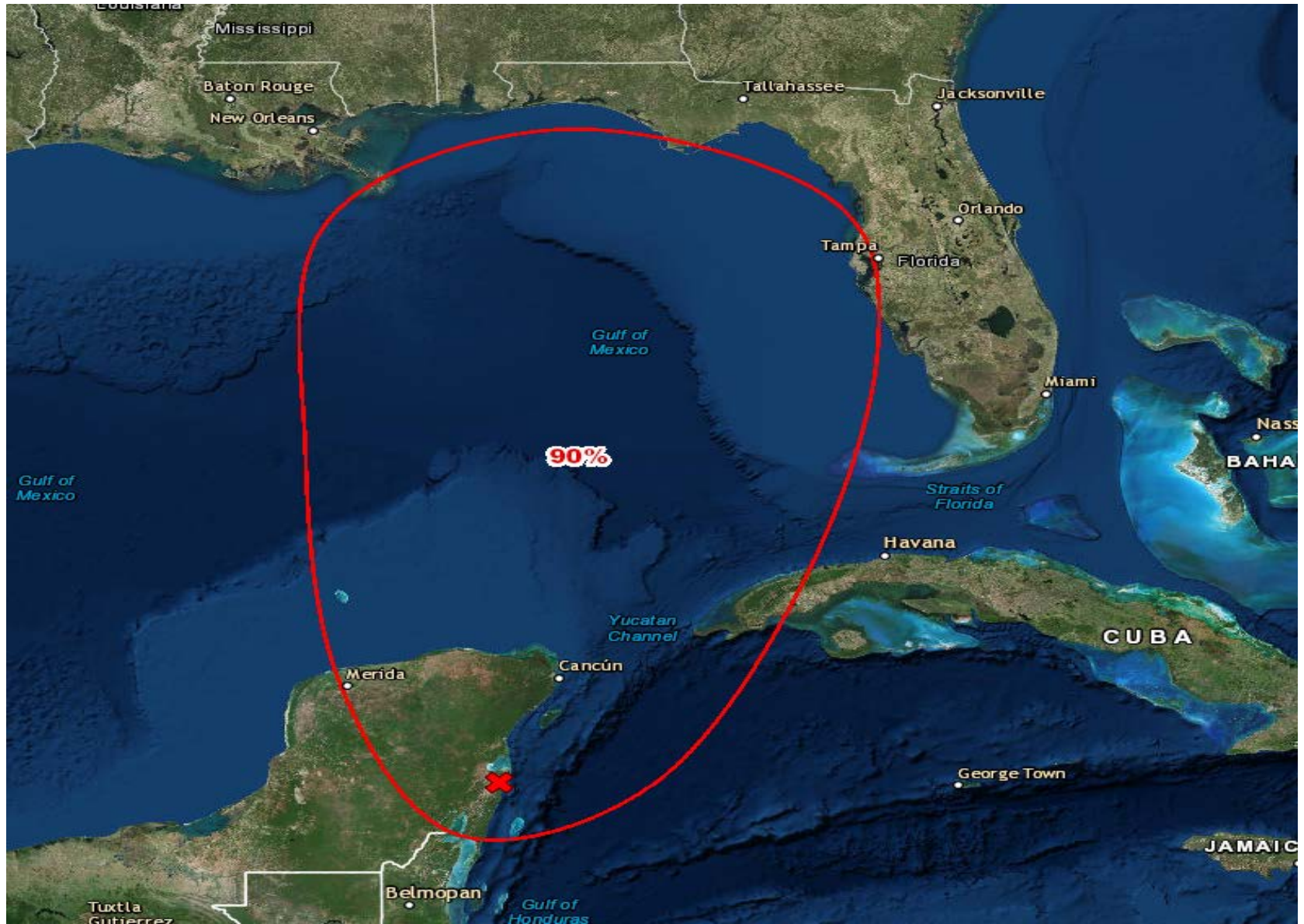




Now that the center of 90L is over water, additional development is likely. However, regardless of name or classification, the main threat from this system will be heavy rainfall and flooding.

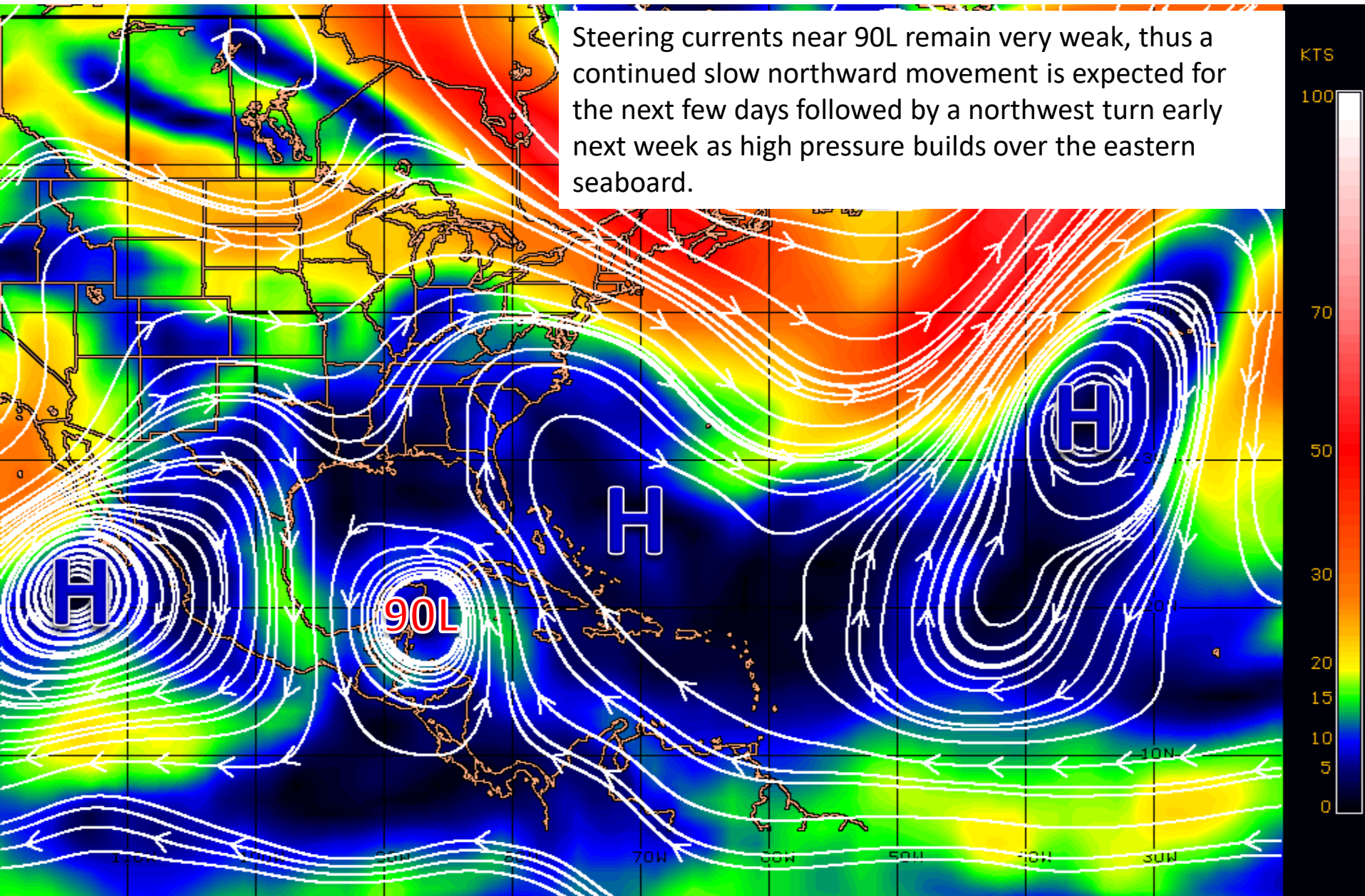
**Chance of Development within 48 hours = 90%**

**Chance of Development Sunday-Wednesday = 90%**

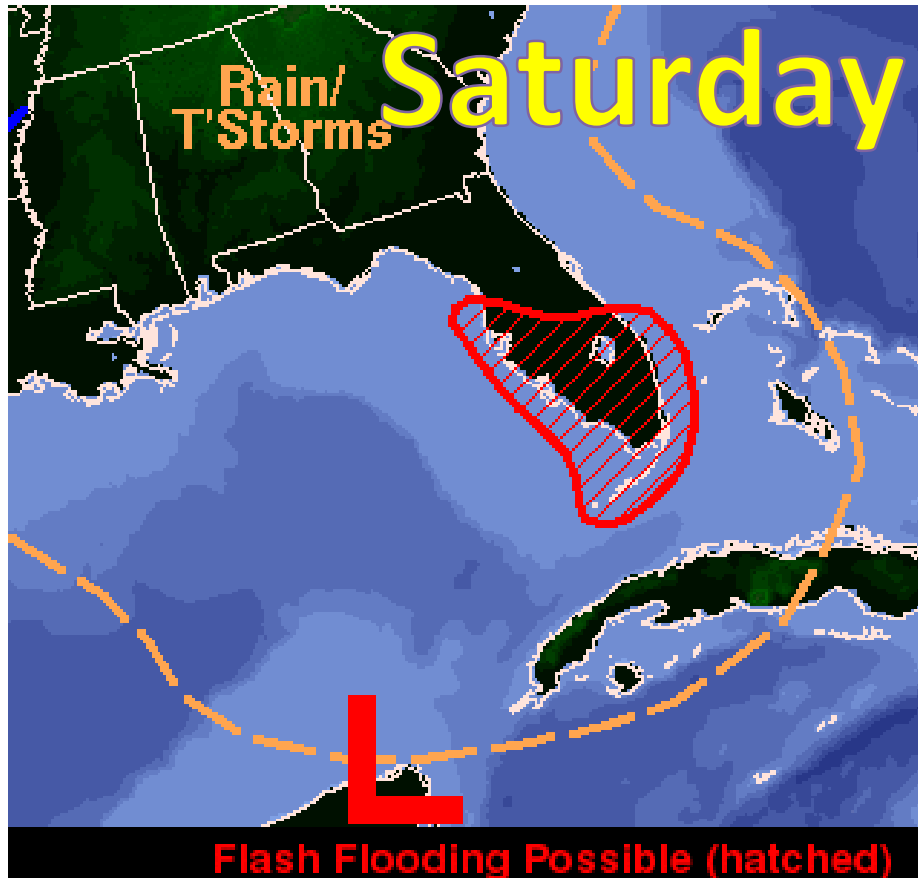


# Steering Currents

Steering currents near 90L remain very weak, thus a continued slow northward movement is expected for the next few days followed by a northwest turn early next week as high pressure builds over the eastern seaboard.

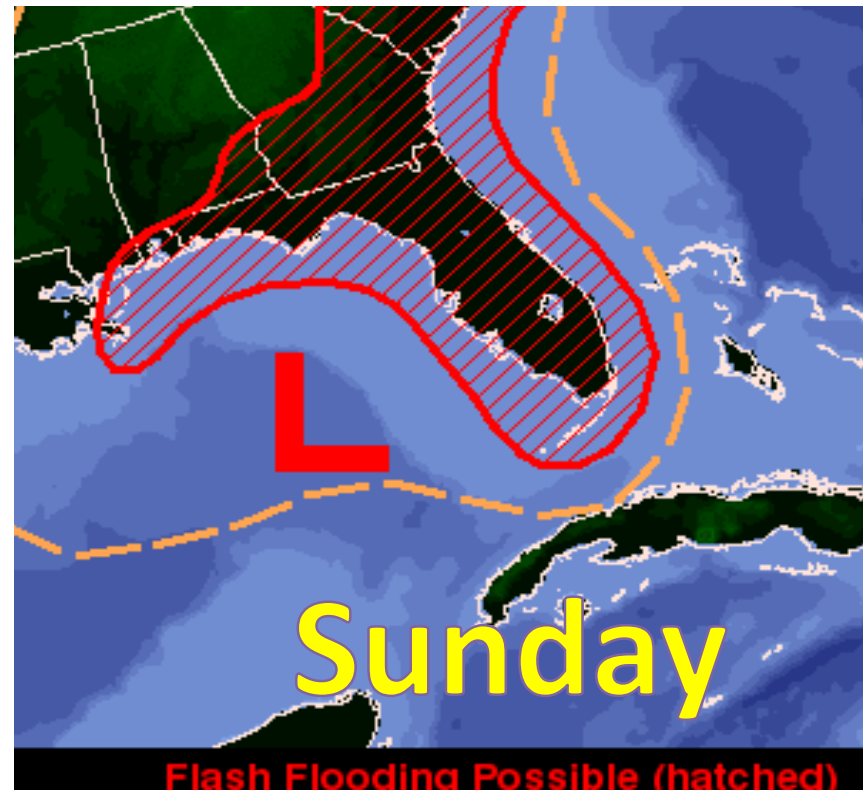


# Forecast Weather Map – This Weekend



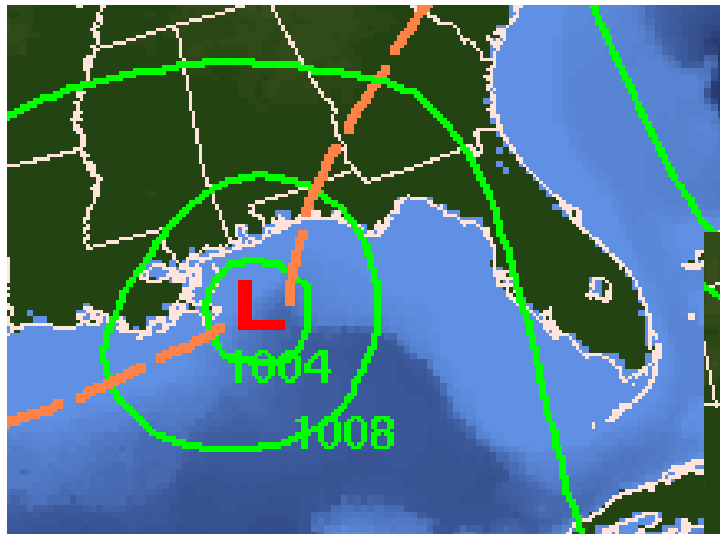
90L will slowly move northward towards the northeastern Gulf Coast through Sunday, but showers and storms will spread well to the east of the center and affect much of Florida.

Showers and storms may begin to affect South Florida (mainly the Keys) today and spread northward into North and Central Florida throughout the day on Saturday.



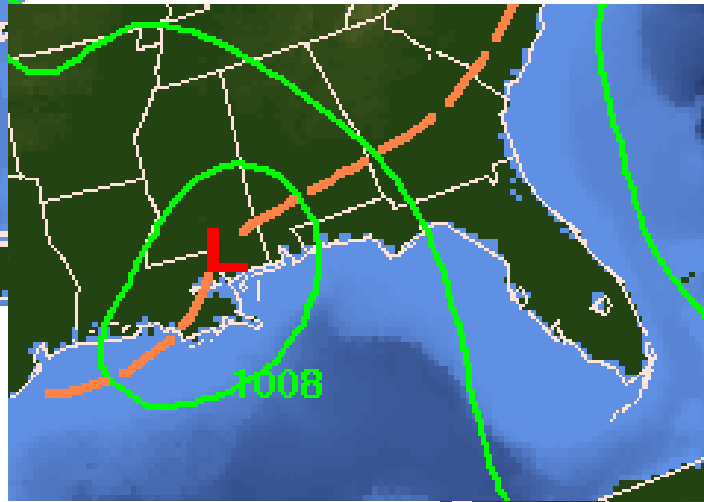


# Forecast Weather Map – This Weekend

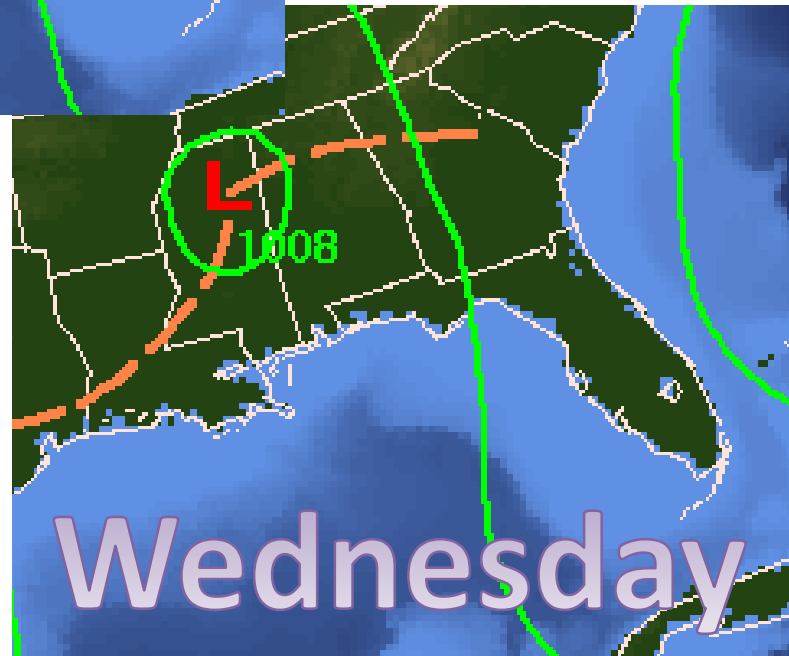


Monday

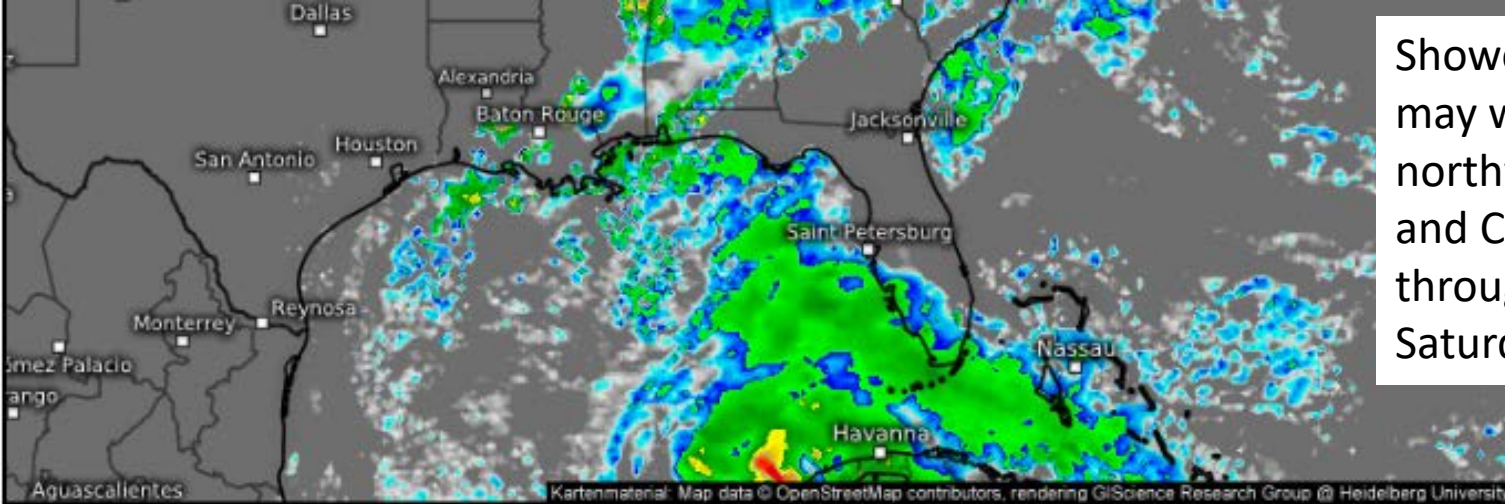
The system may slow down considerably or stall early week, prolonging the rain threat and increasing the chance of widespread flooding.



Tuesday



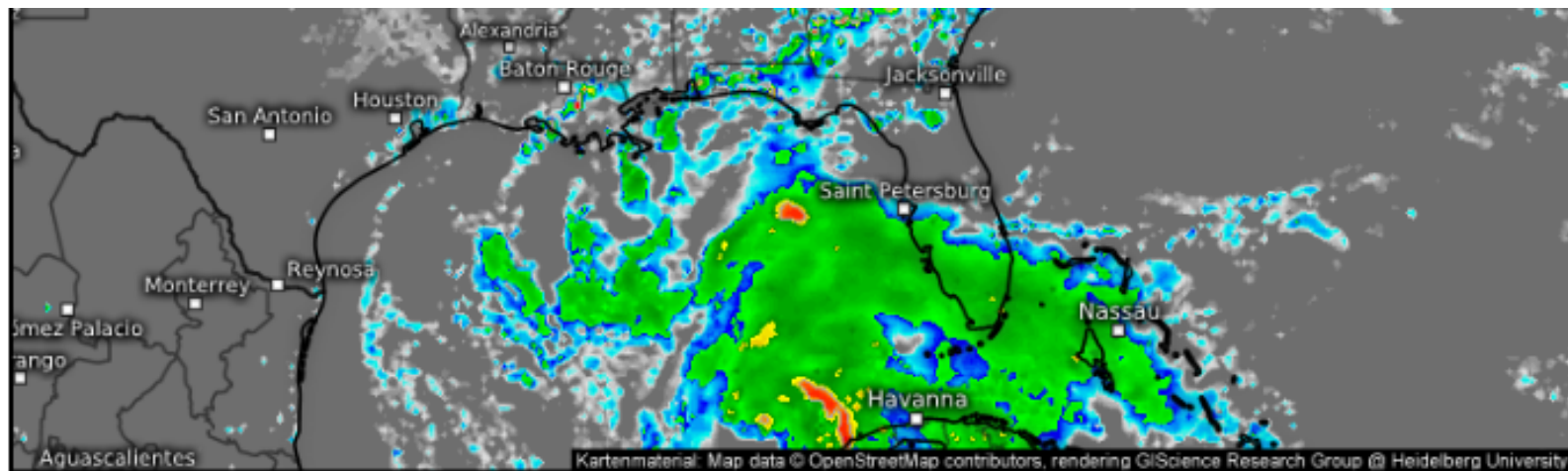
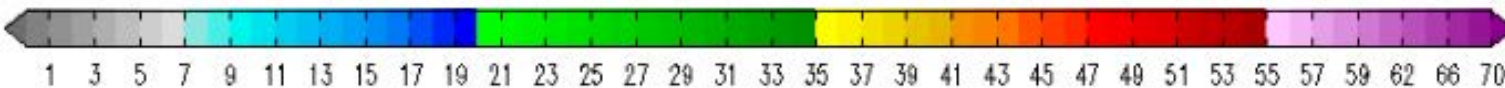
Wednesday



Showers and storms may will spread northward into South and Central Florida throughout the day on Saturday.

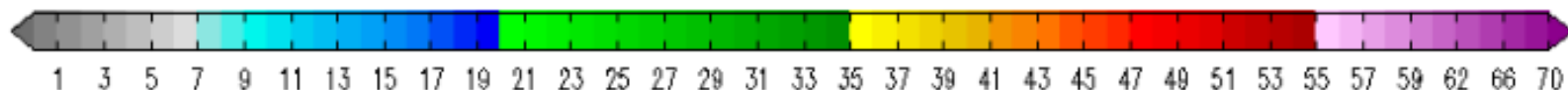
Base reflectivity (dBZ) 

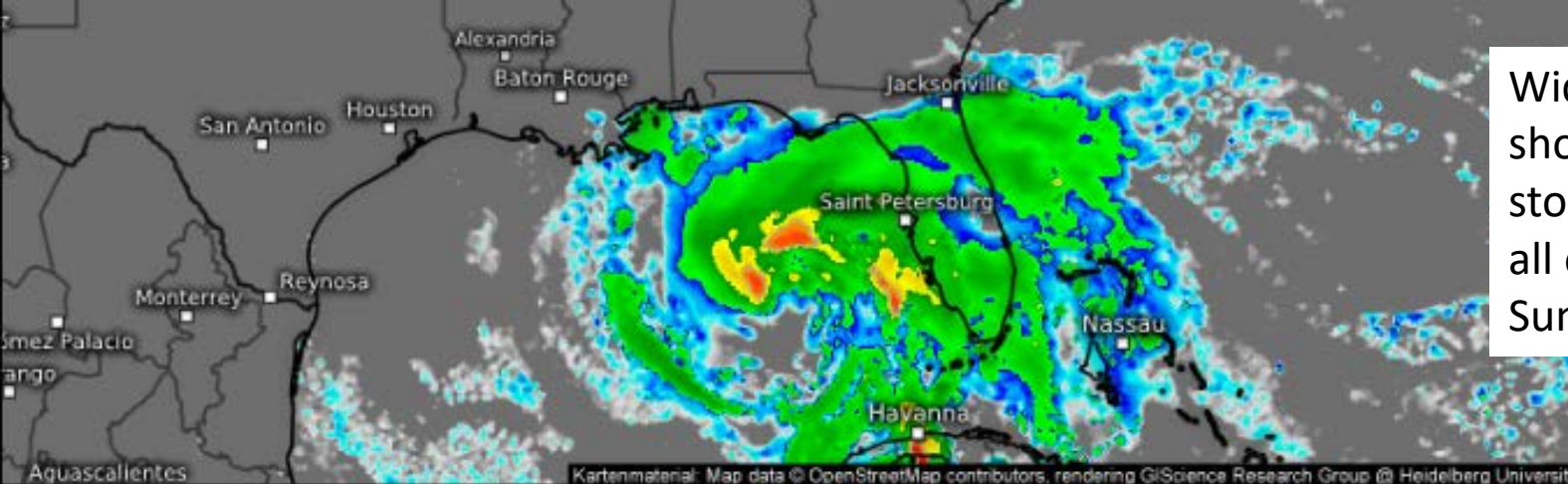
Valid for  
05/26/2018, 07:00am CDT



Base reflectivity (dBZ) 

Valid for  
05/26/2018, 01:00pm CDT

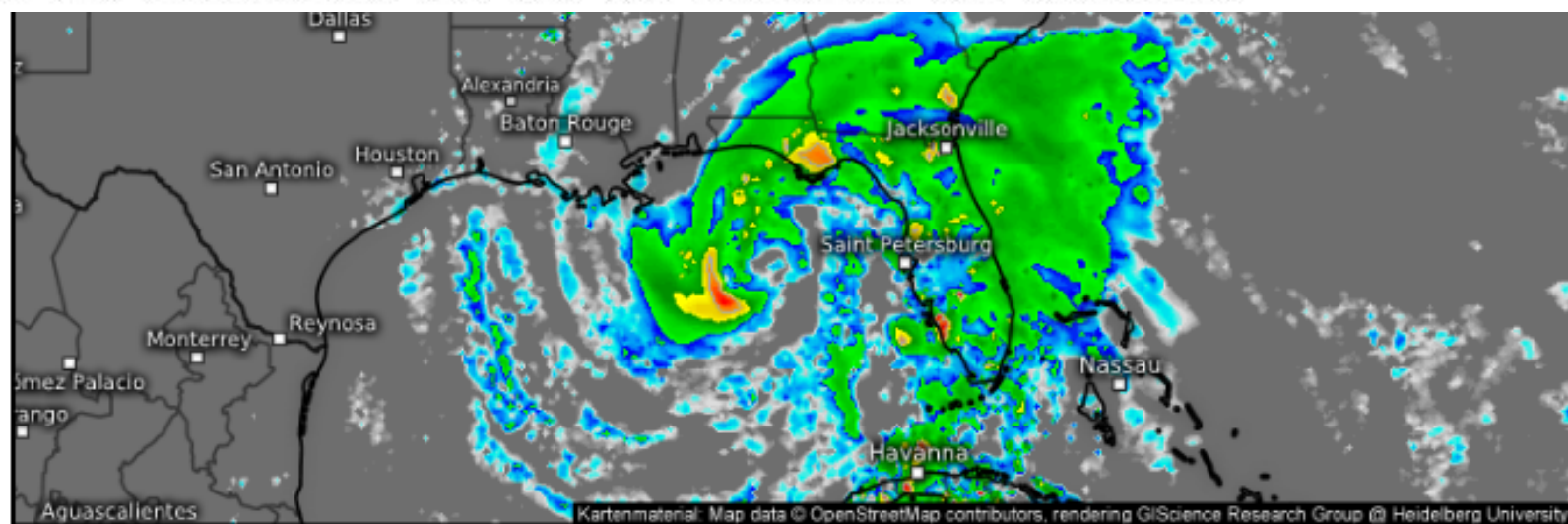
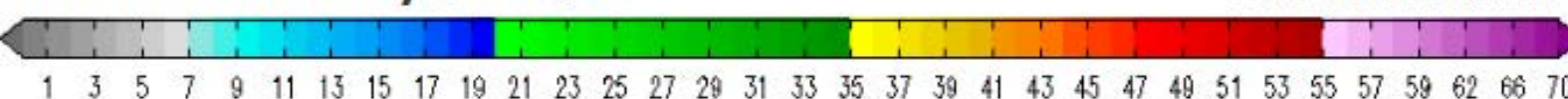




Widespread  
showers and  
storms will affect  
all of Florida  
Sunday.

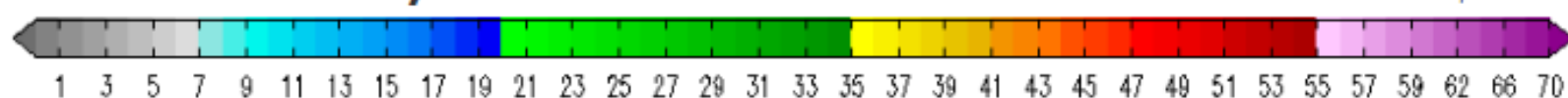
Base reflectivity (dBZ)

Valid for  
05/27/2018, 04:00am CDT

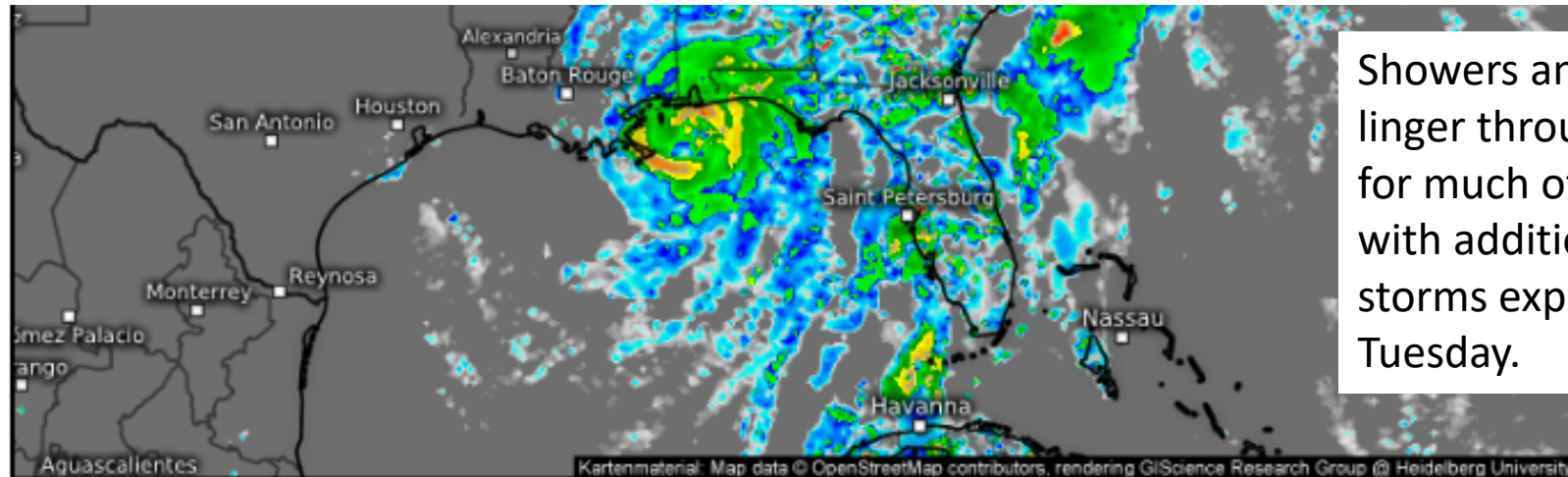


Base reflectivity (dBZ)

Valid for  
05/27/2018, 01:00pm CDT

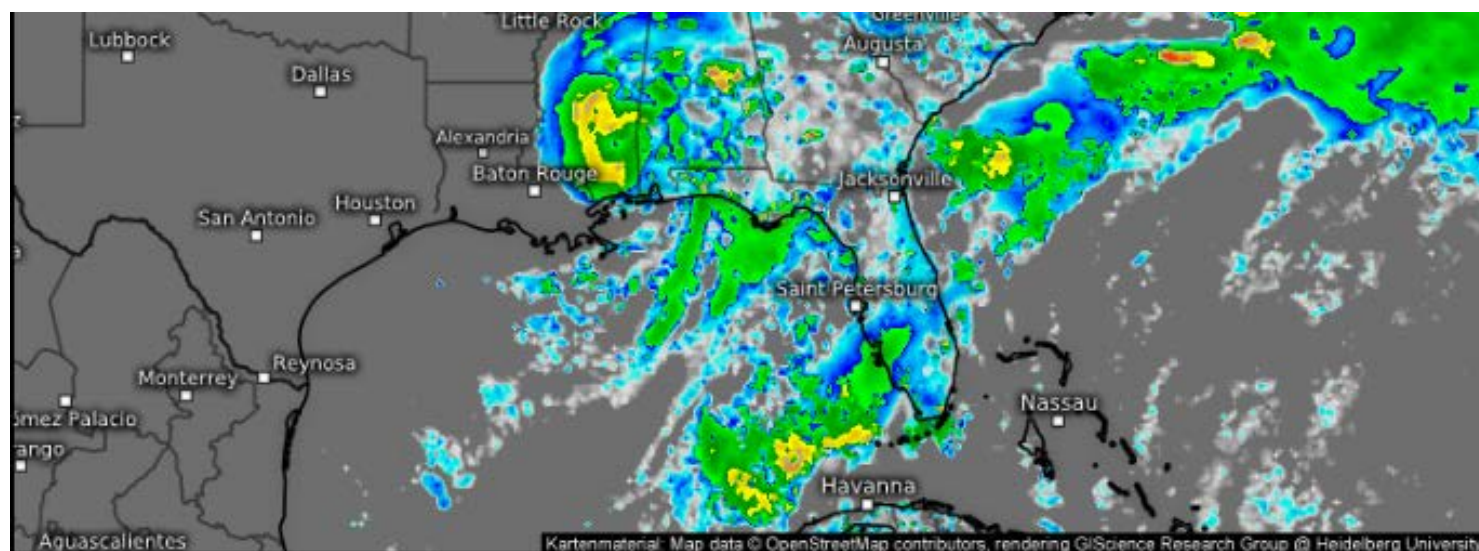
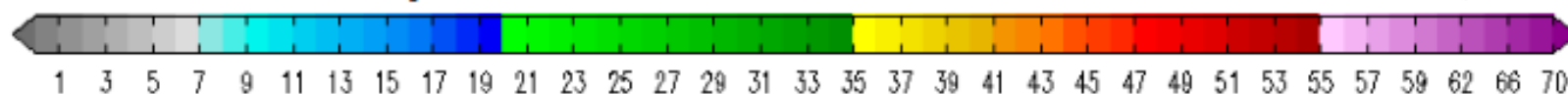






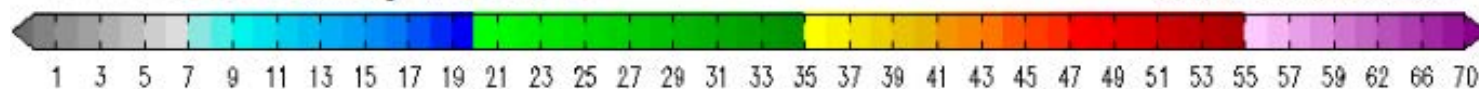
Base reflectivity (dBZ) 

Valid for  
05/28/2018, 01:00pm CDT

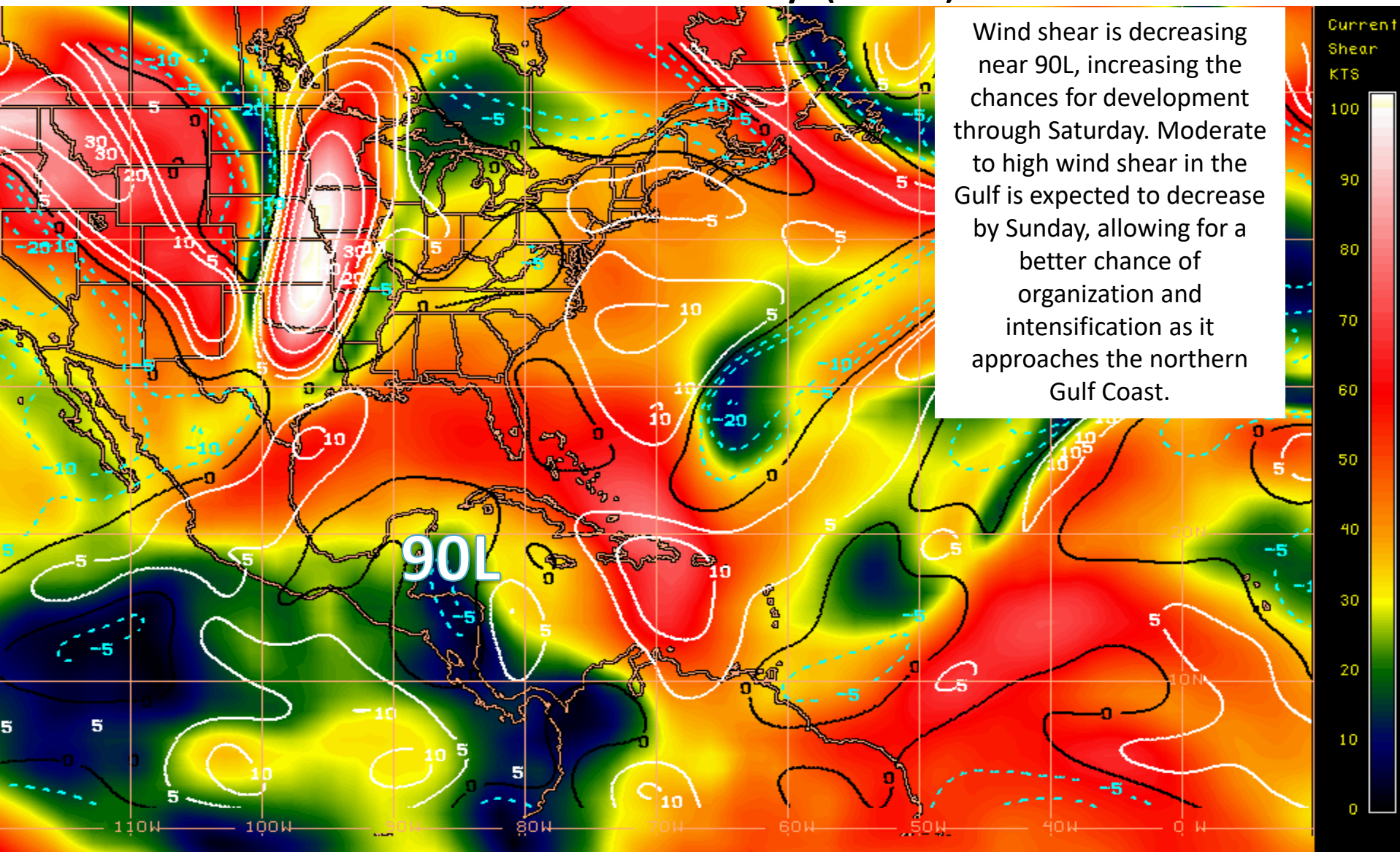


Base reflectivity (dBZ) 

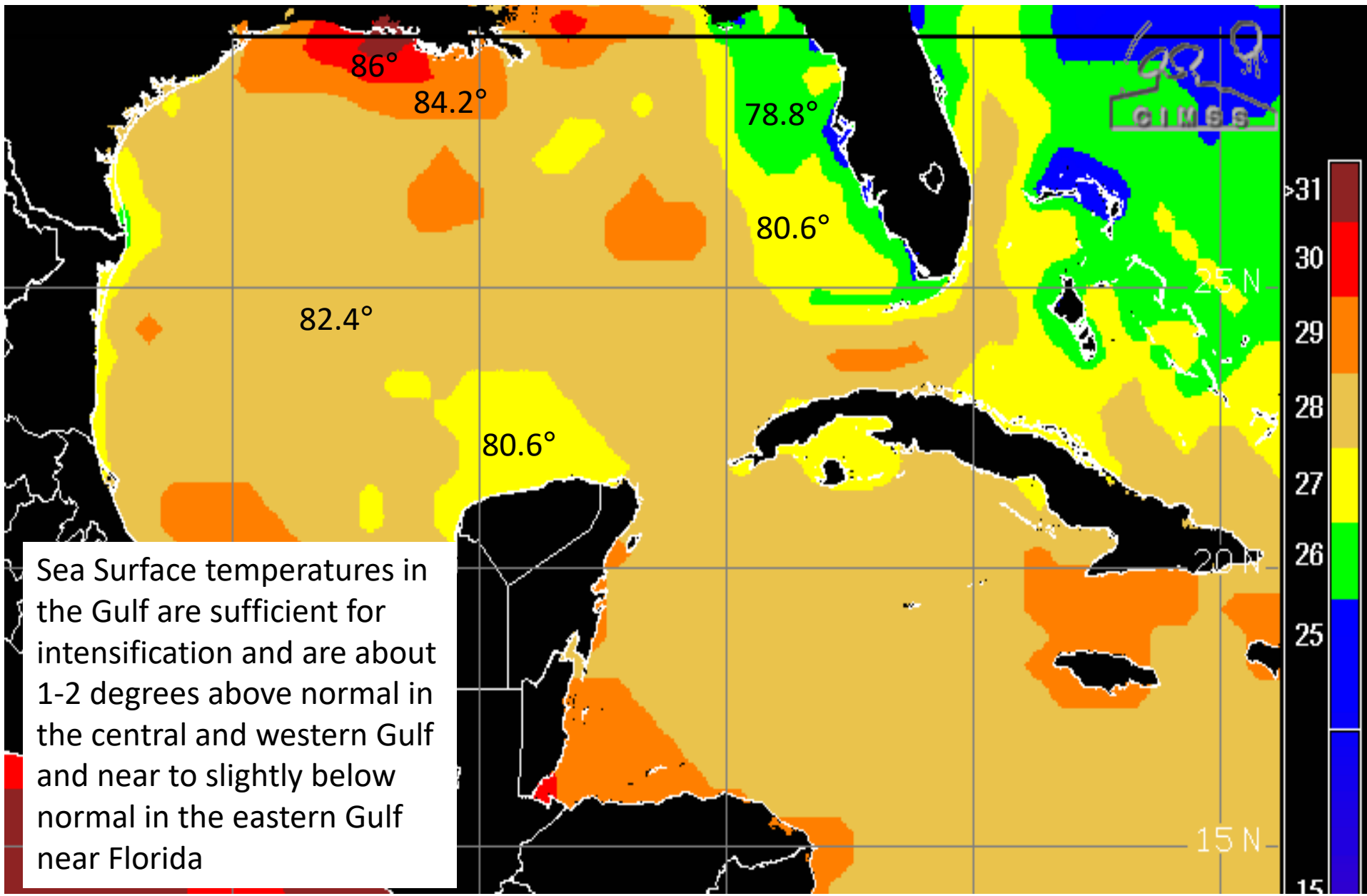
Valid for  
05/29/2018, 10:00am CDT



# Current Wind Shear (shaded) and Shear Tendency (lines)



# Current Sea Surface Temperatures

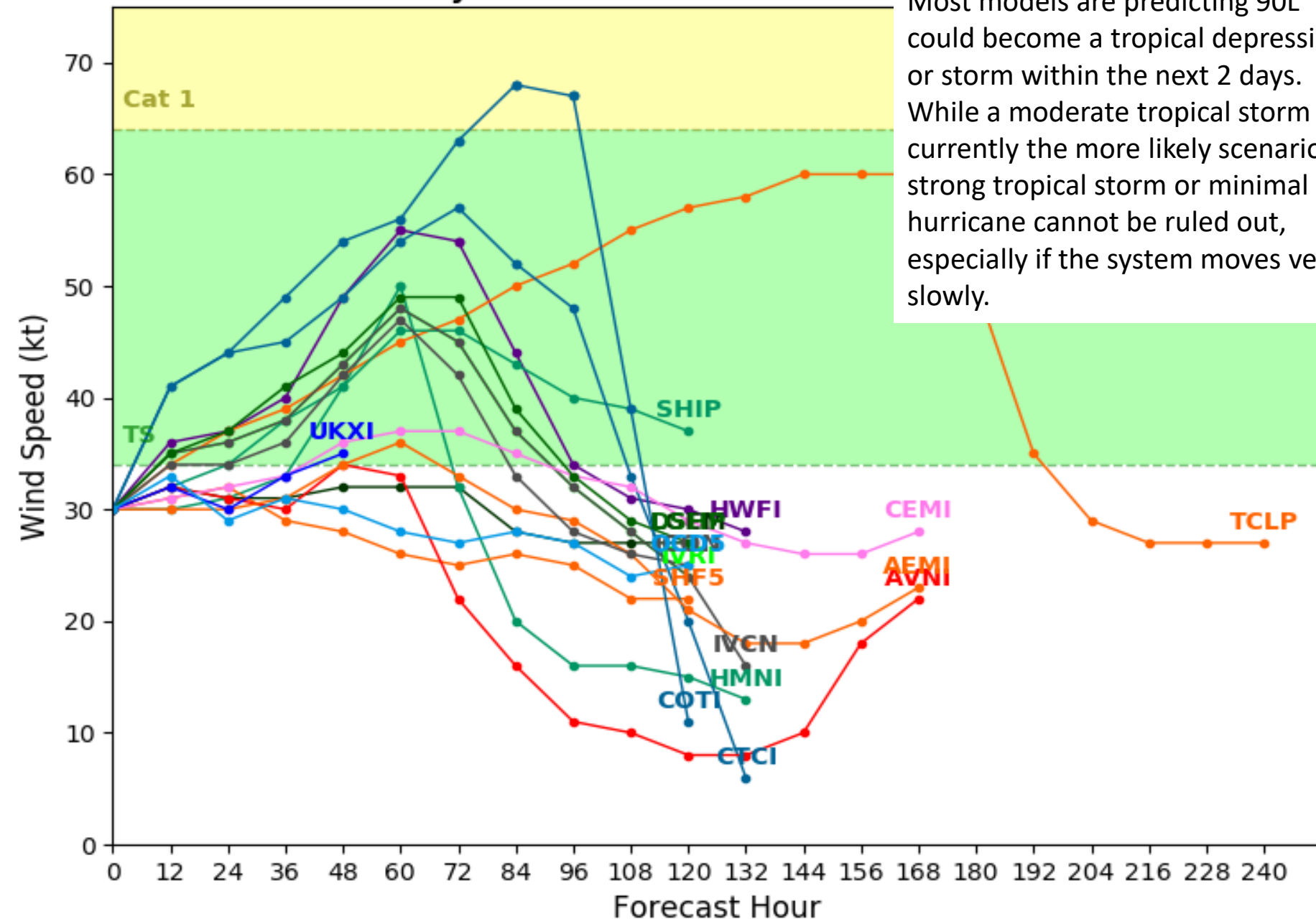




# Invest 90L Model Intensity Guidance

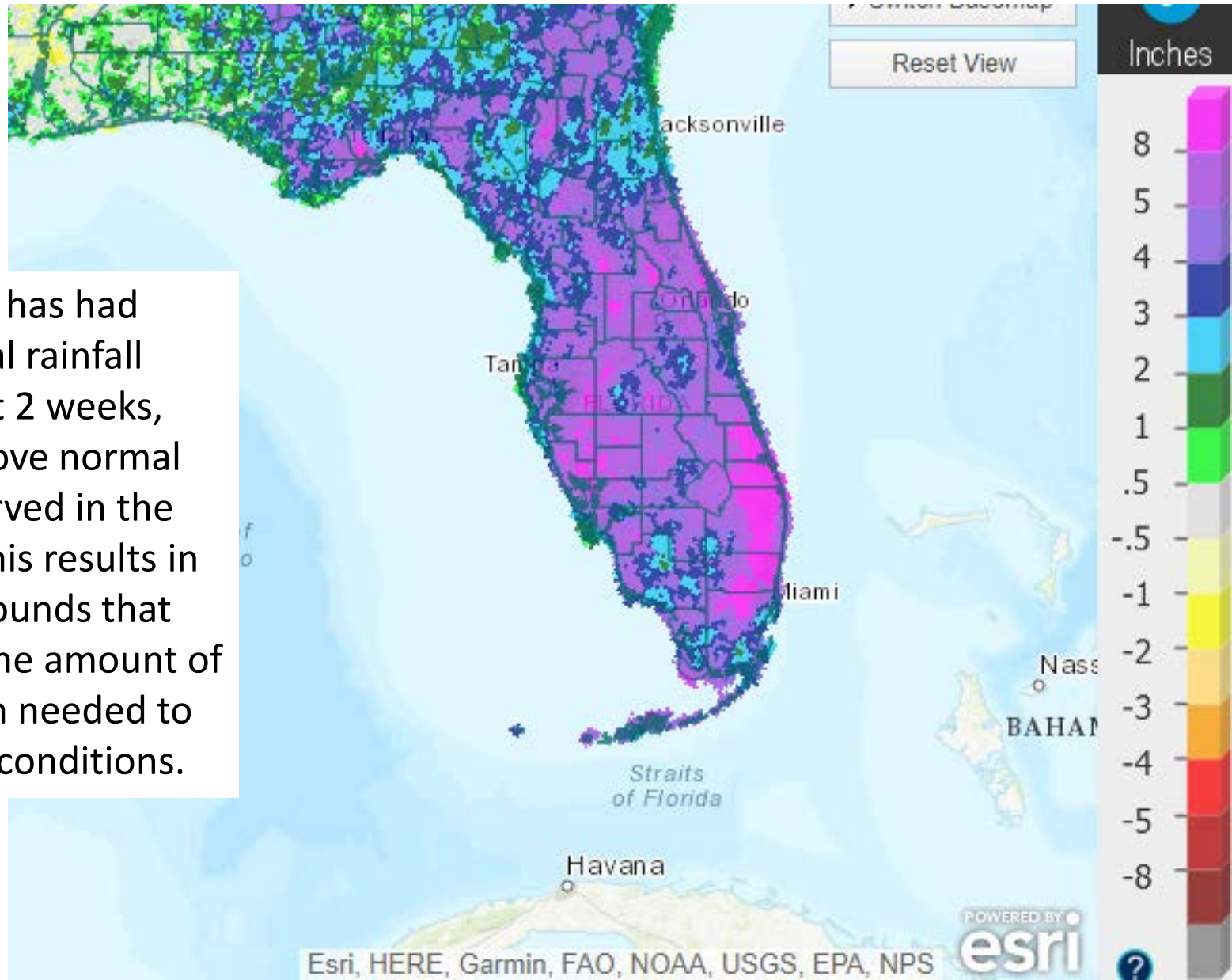
Initialized at 06z May 25 2018

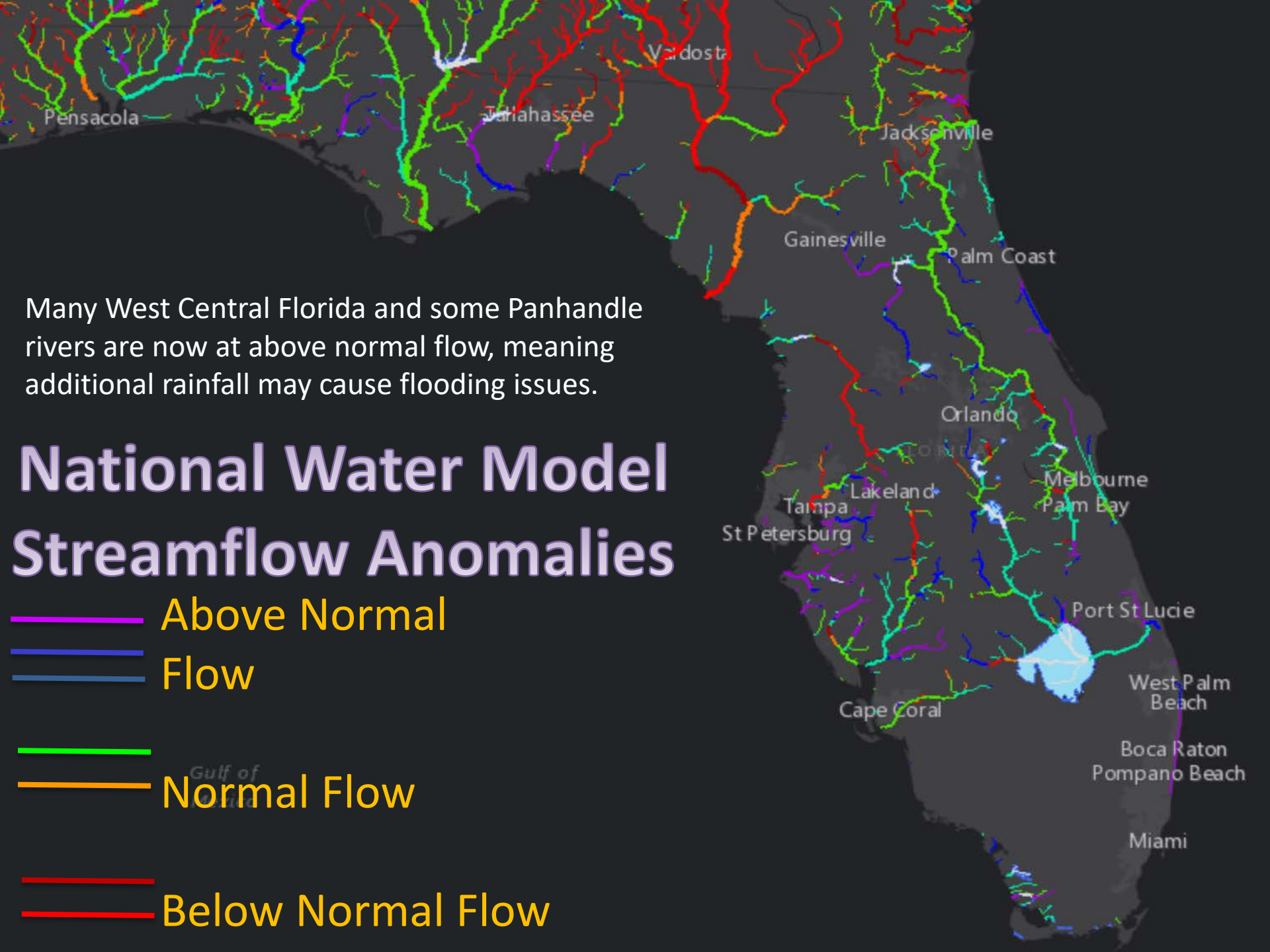
Most models are predicting 90L could become a tropical depression or storm within the next 2 days. While a moderate tropical storm is currently the more likely scenario, a strong tropical storm or minimal hurricane cannot be ruled out, especially if the system moves very slowly.



# Rainfall Anomalies Over Past 14 Days

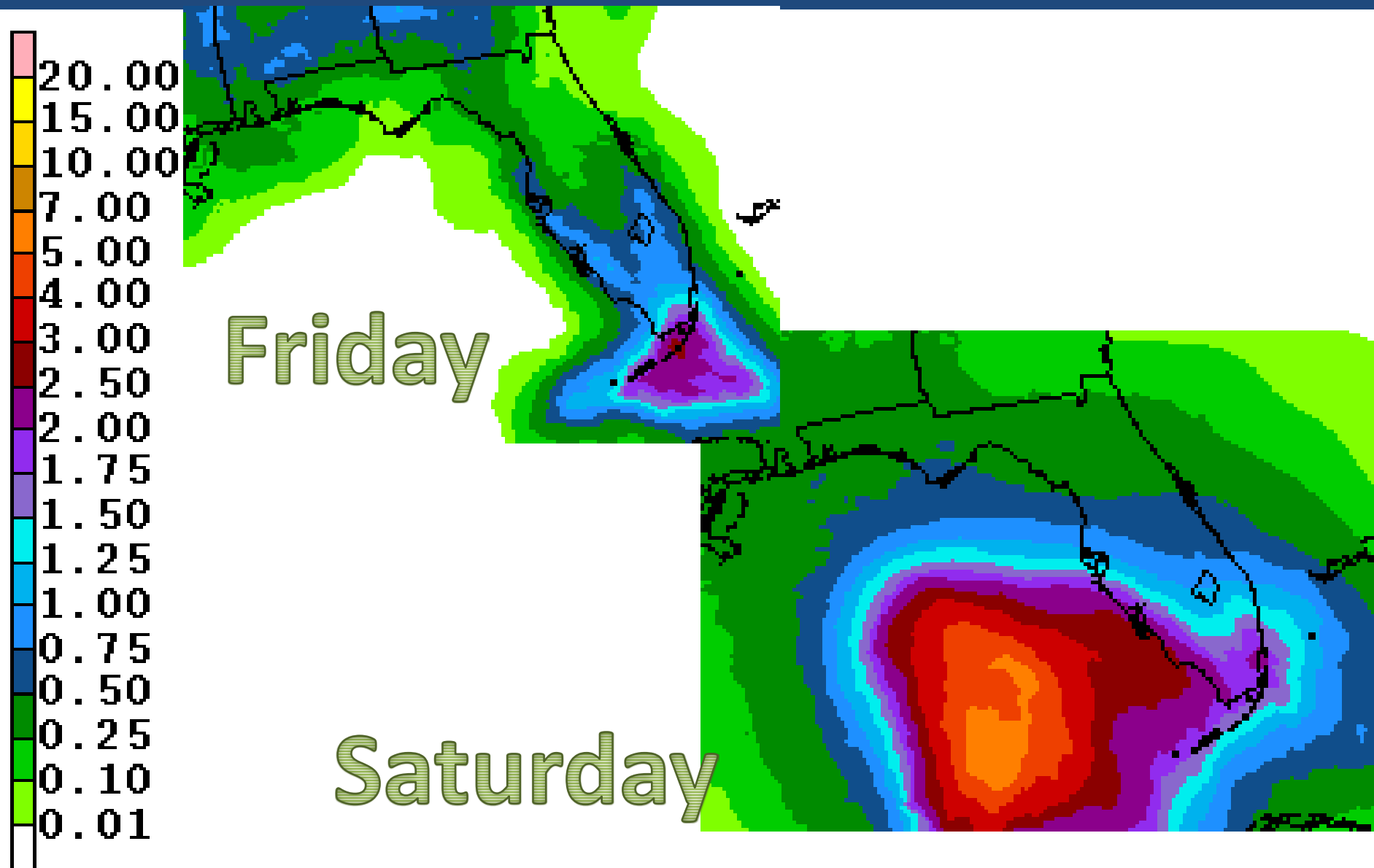
All of Florida has had above normal rainfall over the past 2 weeks, with well above normal rainfall observed in the Peninsula. This results in saturated grounds that will reduce the amount of time and rain needed to create flood conditions.



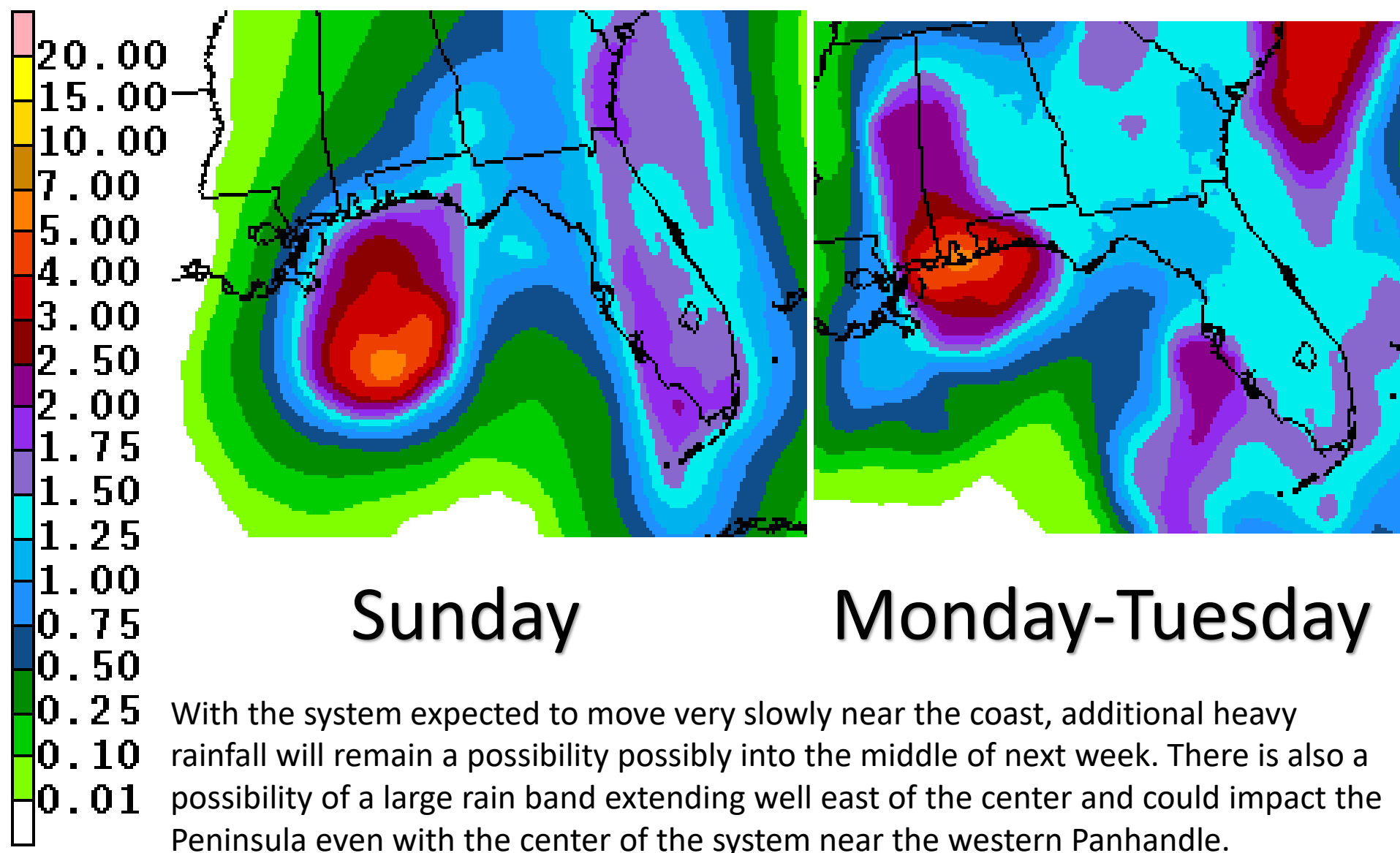




# *Forecast Total Rainfall Accumulations for Fri.-Sat.*



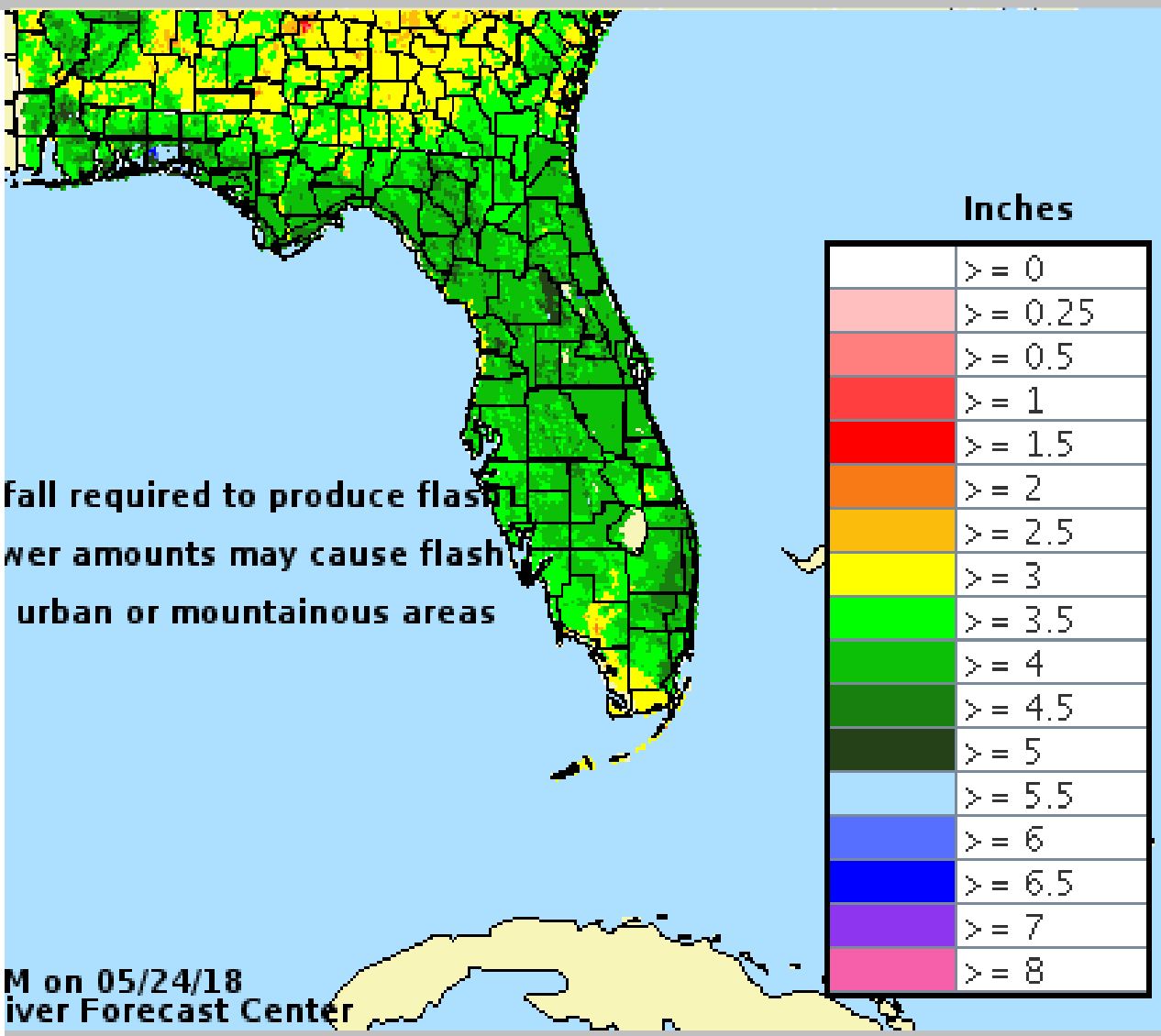
# *Forecast Total Rainfall Accumulations*





# 3-hr Flash Flood Guidance

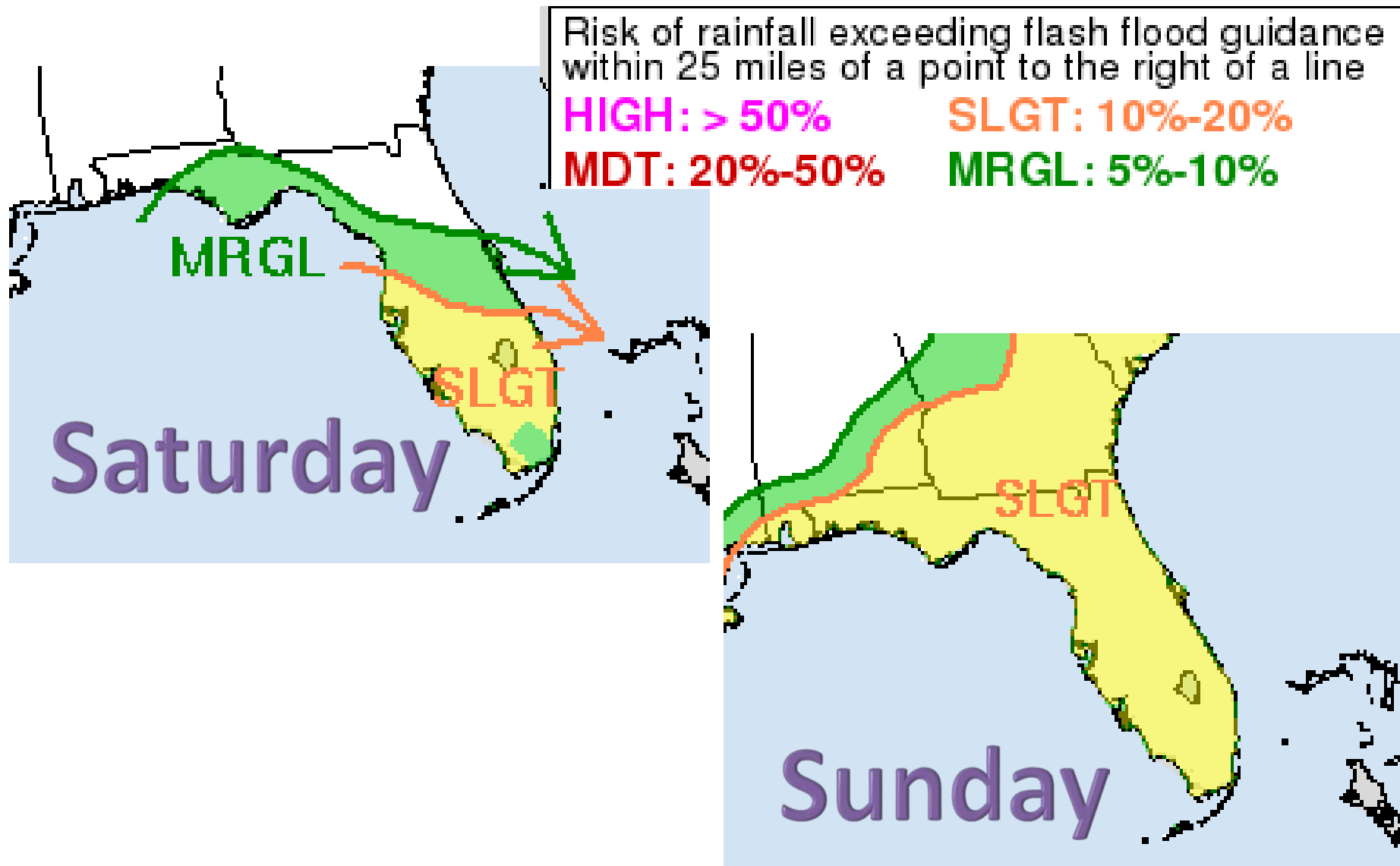
Valid: 05/22/2018 @ 09:53 PM



- Since soils are already saturated, any additional heavy rain (generally 3-4" in 3 hours, 5-6" in 6 hours or 6-8" in 12 hours) will cause flash flooding issues.
- Lower amounts, or 3-6" over a longer time period can still cause flooding of roads and low-lying areas.



# Excessive Rain Outlook – Risk for Flash Flooding



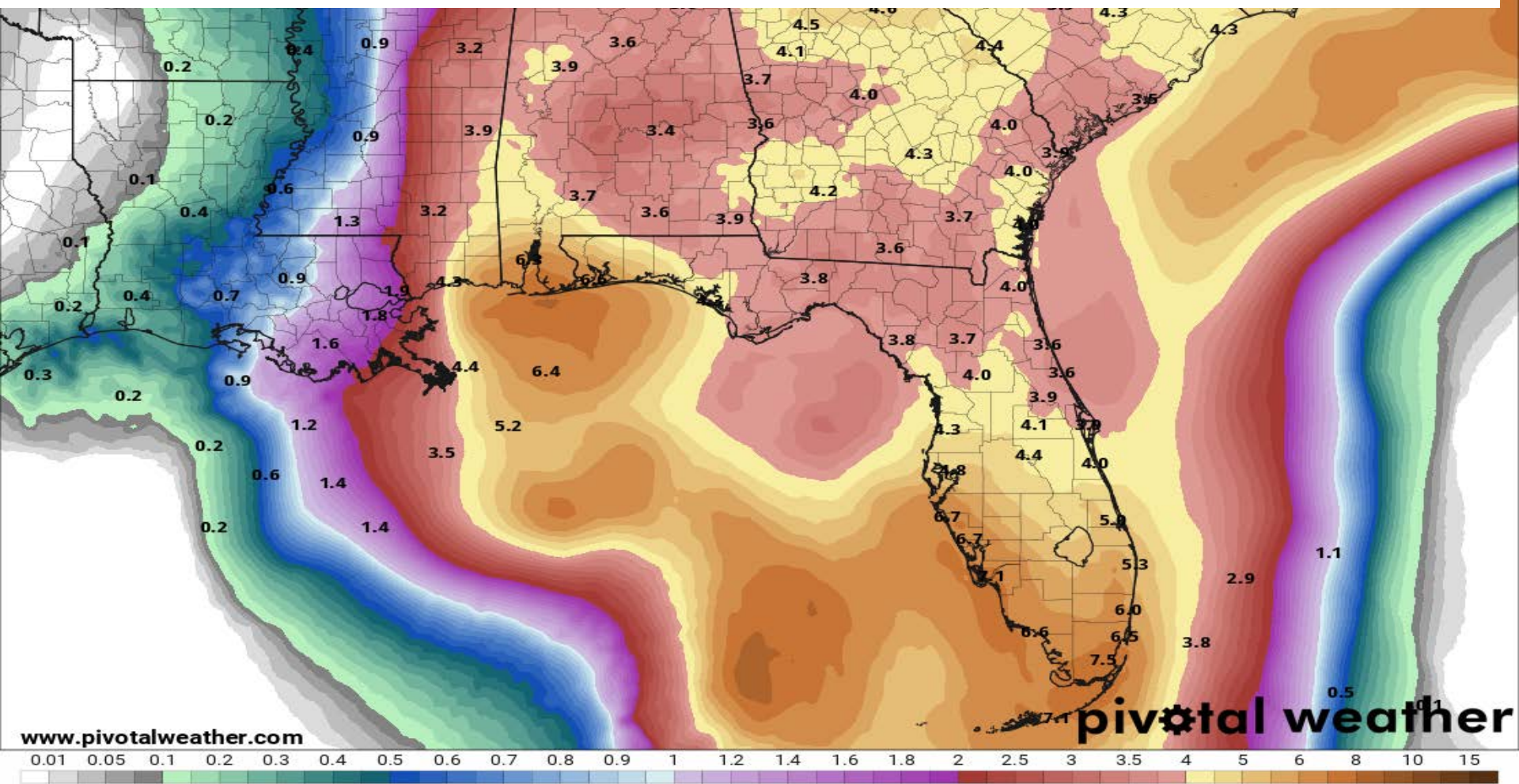
# Forecast Total Rainfall Accumulations for next 7 Days

7-Day Precipitation (in)

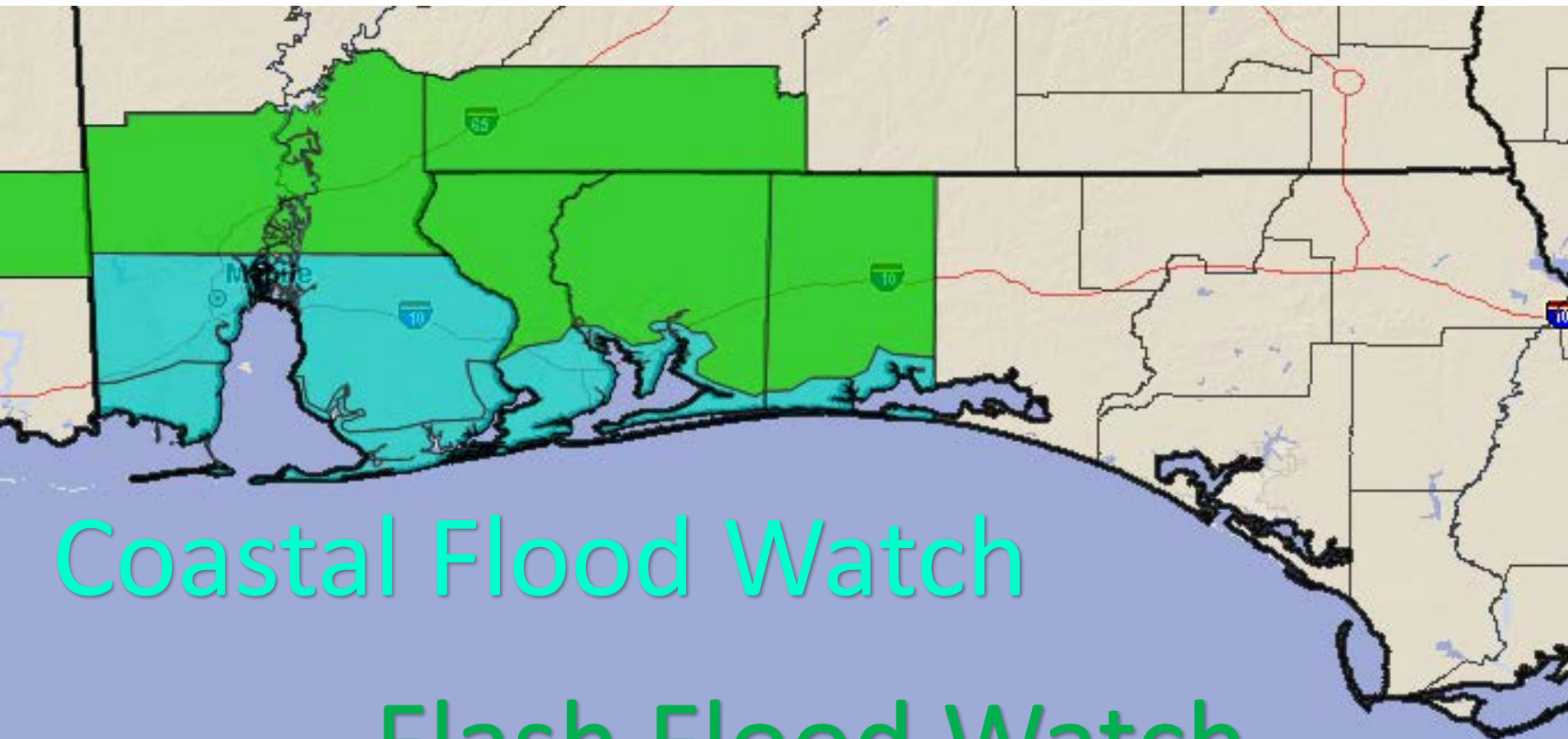
Ending Friday, Jun. 1, 2018 at 8 a.m. EDT

Init: Fri 2018-05-25 12z WPC

**EXACT RAINFALL AMOUNTS WILL DEPEND ON THE STRUCTURE AND TRACK OF 90L, WHICH COULD BE HIGHER OR LOWER THAN WHAT IS SHOWN.** At this time, widespread average rainfall amounts of 3-6" inches are possible statewide, with isolated higher totals of 7 to 13 inches possible over portions of the Panhandle and South Florida. This should result in street flooding and river flooding, especially in areas where several storms repeatedly move over the same area.

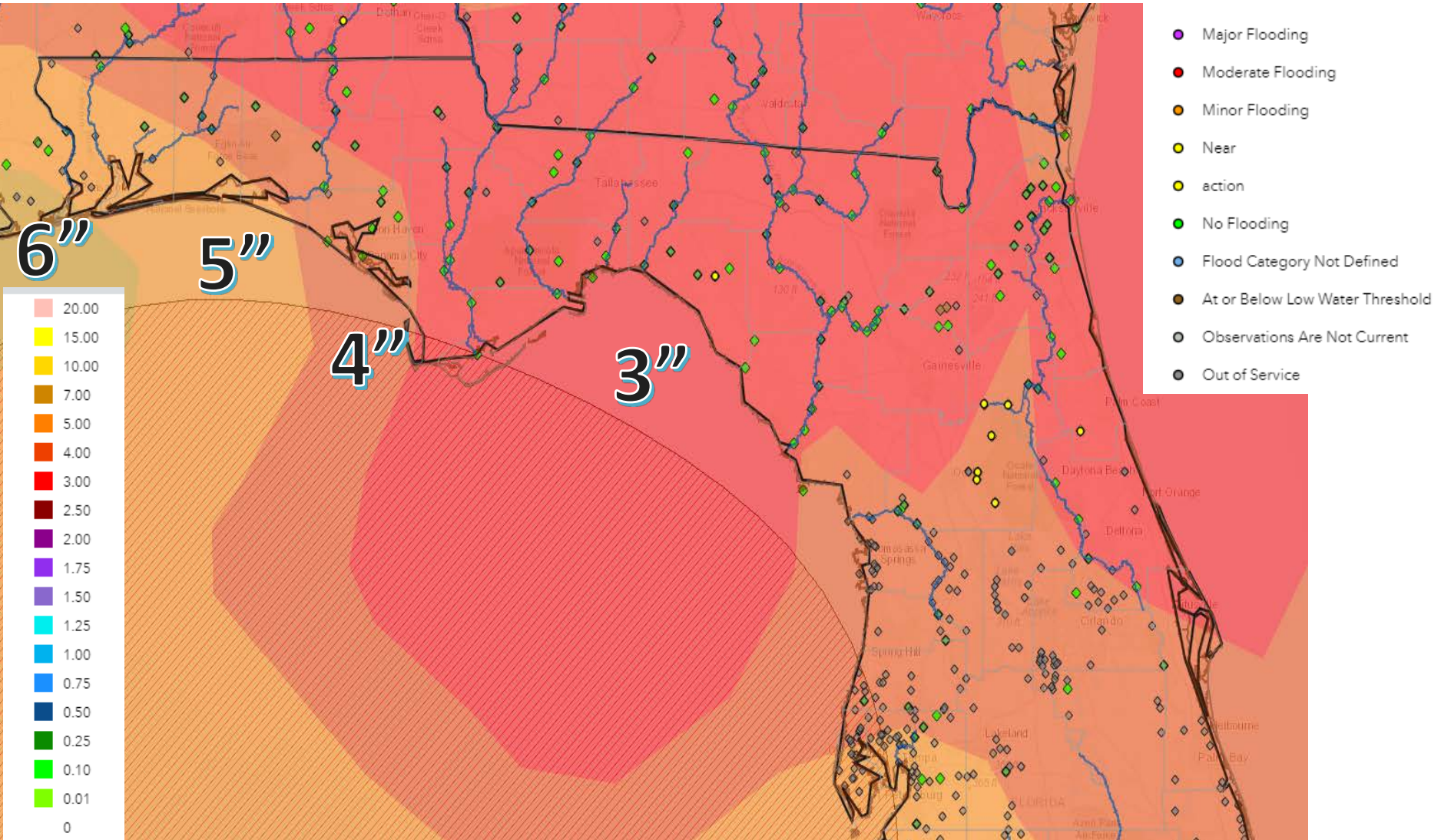


# Coastal and Flash Flood Watches Issued for Western Panhandle

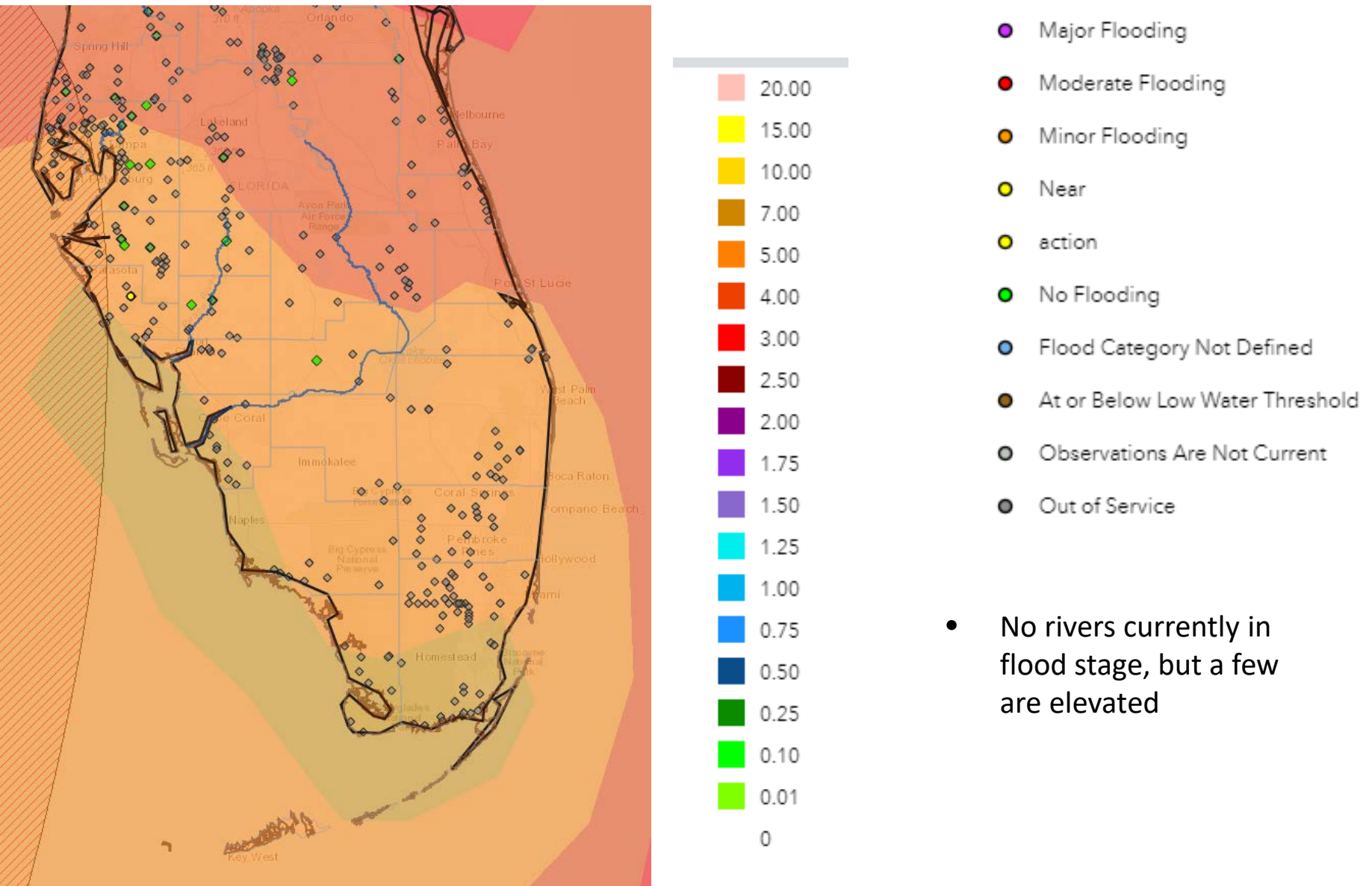




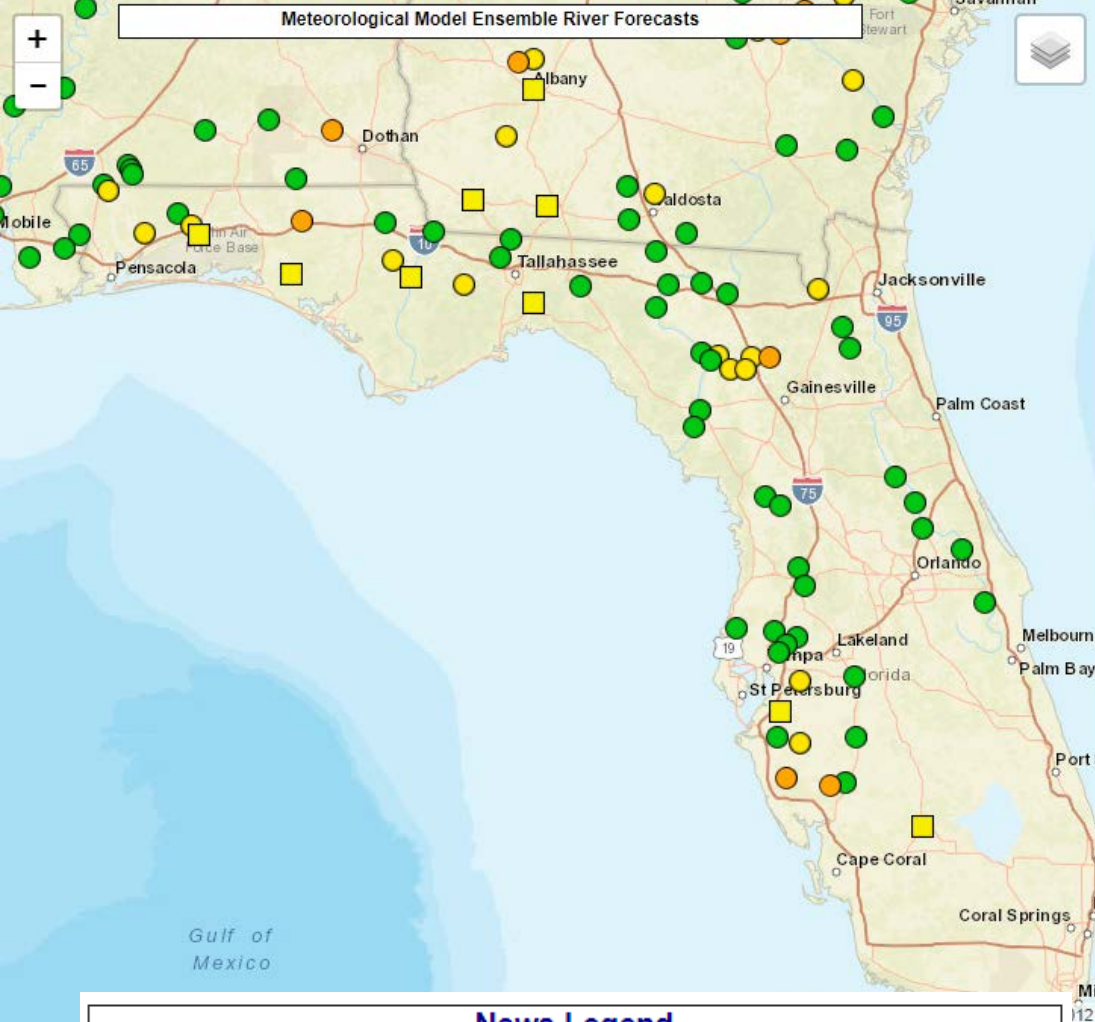
# Current River Status Overlayed with Forecast Rainfall Over Next 7 Days



# Current River Status Overlayed with Forecast Rainfall Over Next 7 Days

















# 7 Day Chance of River Flooding

In addition to the flash flooding potential, minor to moderate flooding on area rivers will be possible, but this will ultimately be dependent on where the heaviest rain falls. The areas for concern are currently in West Central Florida, the Florida Panhandle, and the Santa Fe River basin and Paynes Prairie State Park.

News Legend		
News Items less than 24 hours old	News Items 1 to 7 days old	No current News Items
Map Legend		
Chance of Exceedance		River Forecast Centers
30%	Level	70%
	Action	
	Minor Flood	
	Moderate Flood	
	Major Flood	
 = less than 30% chance of reaching Action level		
 = no critical levels defined for this point		
		Middle Atlantic River Forecast Center
		Northeast River Forecast Center
		Ohio River Forecast Center
		Southeast River Forecast Center

# Summary

- The low pressure area (Invest 90L) continues to become better defined and organized and the center of circulation is now located back over water near the east coast of the Yucatan Peninsula.
- Additional development is expected today and tomorrow, and environmental conditions are forecast to become more conducive for development in the Gulf of Mexico over the weekend and early next week.
- As a result, the National Hurricane Center is now predicting a 90% (high) chance of 90L becoming a tropical depression or storm within the next 48 hours (by Saturday evening), and a 90% (high) chance of becoming a tropical cyclone within the next 3-5 days.
- Although computer models are getting into better agreement on track, there is still a fair amount of uncertainty with regard to the intensity and timing of the system. Most models are predicting 90L could become a tropical depression or storm within the next 2 days. While a moderate tropical storm is currently the more likely scenario, a strong tropical storm or minimal hurricane cannot be ruled out, especially if the system moves very slowly.
- Computer models today have slowed from previous runs and now predict landfall not occurring until Monday or Tuesday.
- Additionally, many models predict that once the system reaches the coast, it could linger over the region into the middle part of next week, increasing the rainfall totals and threat for flooding.
- Hurricane Hunter reconnaissance aircraft is scheduled to investigate the system this afternoon to determine structure and intensity of the system. The first name on the 2018 Atlantic Storm name list is Alberto.

## Florida Outlook:

- Regardless of track or intensity, this system will result in a multi-day widespread rainfall event that may impact a large portion of Florida, mainly Friday-Monday across the southern half of the state and Sunday through at least next Tuesday for North Florida and portions of Central Florida.
- A Flash Flood Watch and Coastal Flood Watch is currently in effect for the western Panhandle. Additional Flood Watches, Flash Flood Watches, Coastal Flood Watches and High Surf Advisories may be issued today or tomorrow.
- Widespread rainfall amounts of 3-6" are expected statewide, with locally higher amounts of 7-12+" possible, especially for the Florida Panhandle, West Coast of Florida and South Florida.
- River flooding will also be a concern for portions of the state, especially in West Central Florida, North-Central Florida and the Florida Panhandle/Big Bend.
- Increased wave heights are also expected along the Panhandle and East Coast and will lead to a high risk of rip currents for the holiday weekend.
- Storm surge will create minor coastal flooding along the Panhandle and Big Bend coast during times of high tide (mainly on Sunday).
- The wind and tornado threat will depend on how this system evolves and more information will be available in the coming days.

Another briefing packet will be issued Friday afternoon. For more information on this system visit the NHC website at [www.nhc.noaa.gov](http://www.nhc.noaa.gov)





# TROPICAL UPDATE

Created by:

Amy Godsey, Chief State Meteorologist  
[amy.godsey@em.myflorida.com](mailto:amy.godsey@em.myflorida.com)

State Meteorological Support Unit  
Florida Division of Emergency  
Management

Users wishing to subscribe (approval pending) to this distribution list, register at [https://public.govdelivery.com/accounts/FLDEM/subscriber/new?topic\\_id=SERT\\_Met\\_Tropics](https://public.govdelivery.com/accounts/FLDEM/subscriber/new?topic_id=SERT_Met_Tropics).

Other reports available for subscription are available at <https://public.govdelivery.com/accounts/FLDEM/subscriber/new?preferences=true>