



TROPICAL UPDATE

9 AM EDT

Wednesday, May 23, 2018

Invest Area 90L

This update is intended for government and emergency response officials, and is provided for informational and situational awareness purposes only. Forecast conditions are subject to change based on a variety of environmental factors. For additional information, or for any life safety concerns with an active weather event please contact your County Emergency Management or Public Safety Office, local National Weather Service forecast office or visit the National Hurricane Center website at www.nhc.noaa.gov.



Five-Day Graphical Tropical Weather Outlook

National Hurricane Center Miami, Florida



www.hurricanes.gov

Disturbance 1

Development is not expected within the next 48 hours, but once the system moves into the Gulf of Mexico, organization into a tropical system is possible as it slowly approaches the central and eastern Gulf Coast.

1
(60%) X

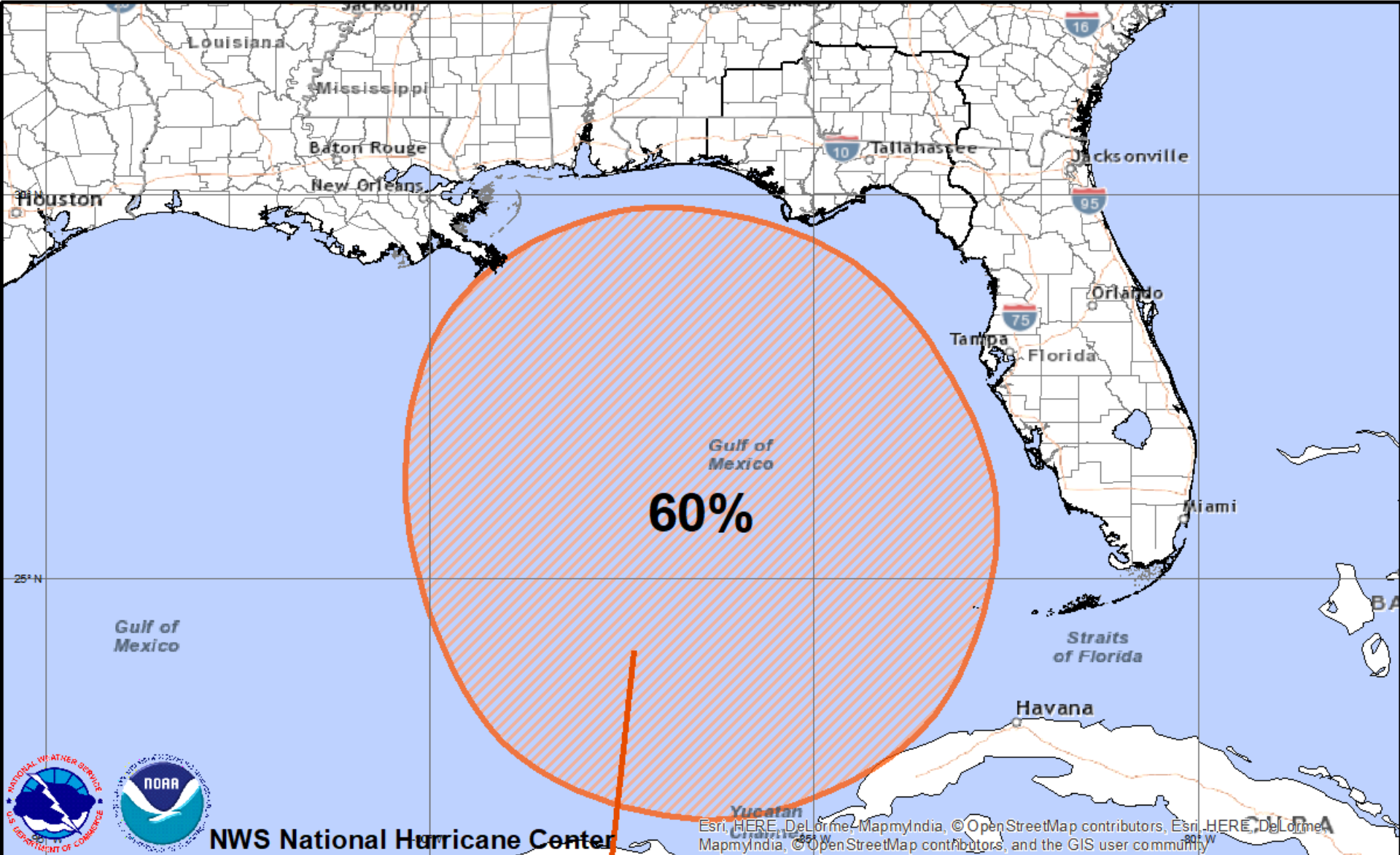
8:00 am EDT
Wed May 23 2018

100W 90W 80W 70W 60W 50W 40W 30W 20W

Current Disturbances and Five-Day Cyclone Formation Chance: X < 40% X 40-60% X > 60%

Tropical or Sub-Tropical Cyclone: ○ Depression ◉ Storm ◉ Hurricane

⊗ Post-Tropical Cyclone or Remnants



Tropical Weather Outlook

Five Day Formation Chances

Wednesday May 23, 2018
07:56 AM ET

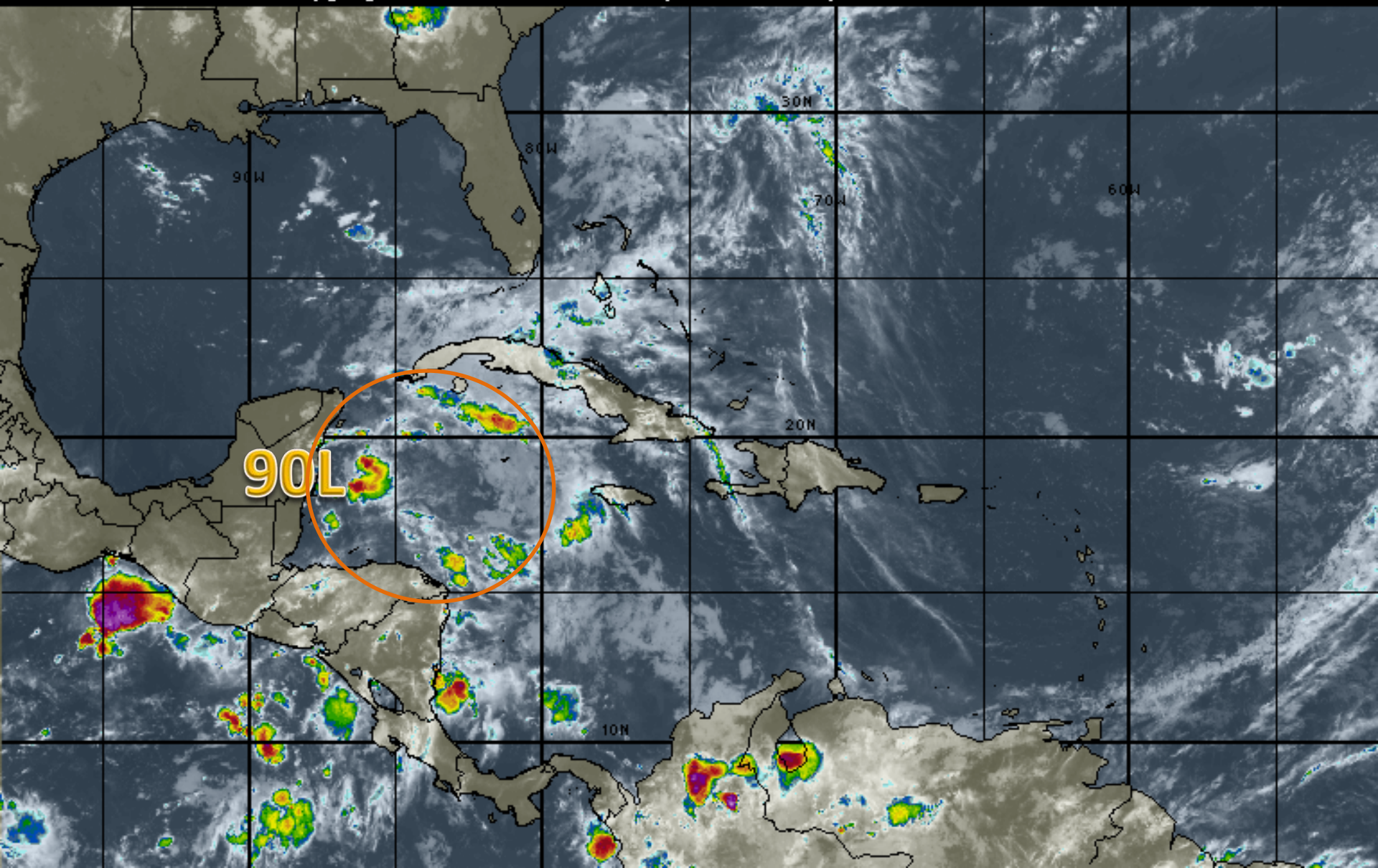
NWS National Hurricane Center

- High > 60%
- Medium 40-60%
- Low < 40%

X indicates disturbance location;
shading indicates potential formation area.

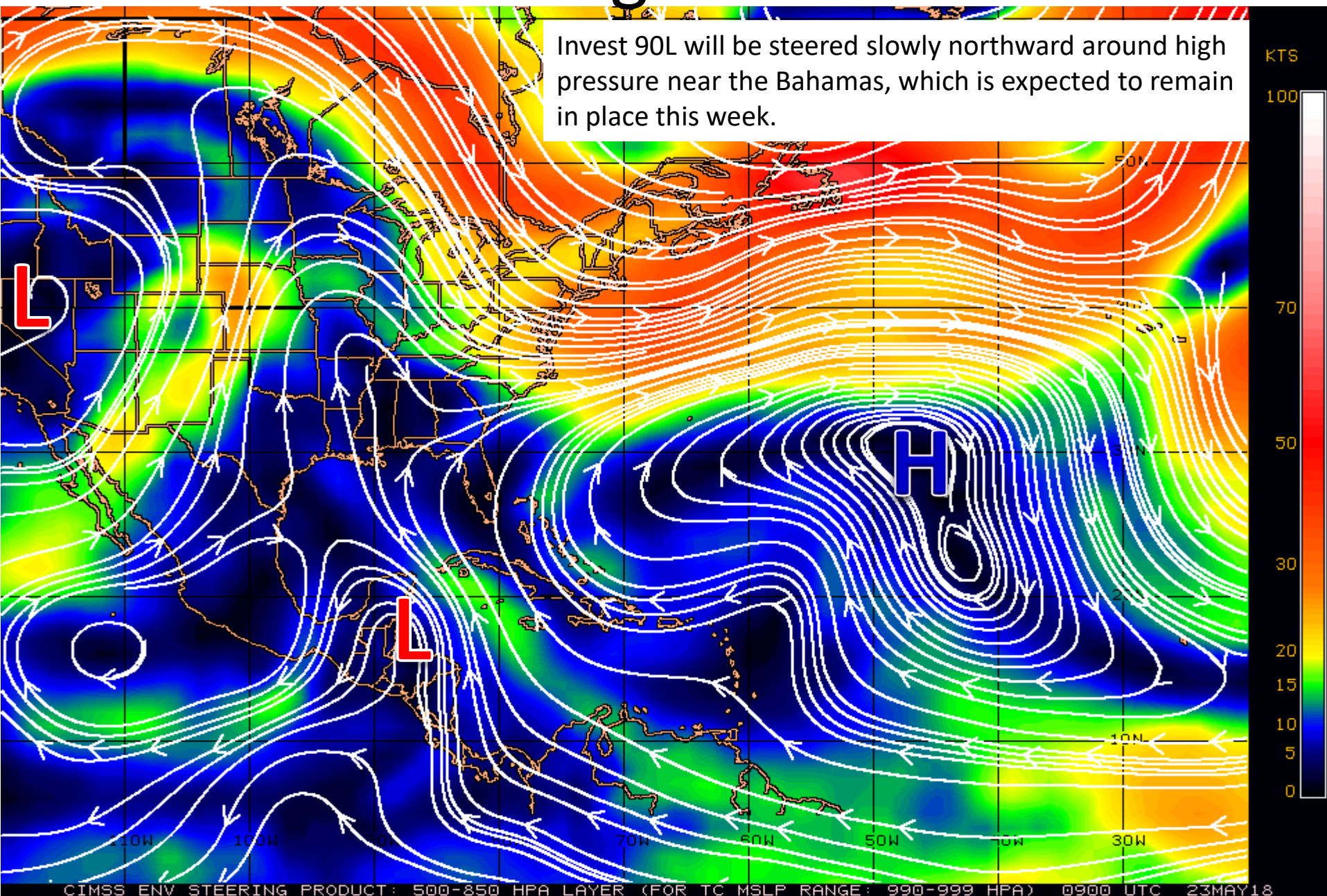
Caribbean/Gulf Satellite Image

11:00 23-MAY-2018 GMT Copyright © 1998-2018 WSI Corporation <http://www.wsi.com>

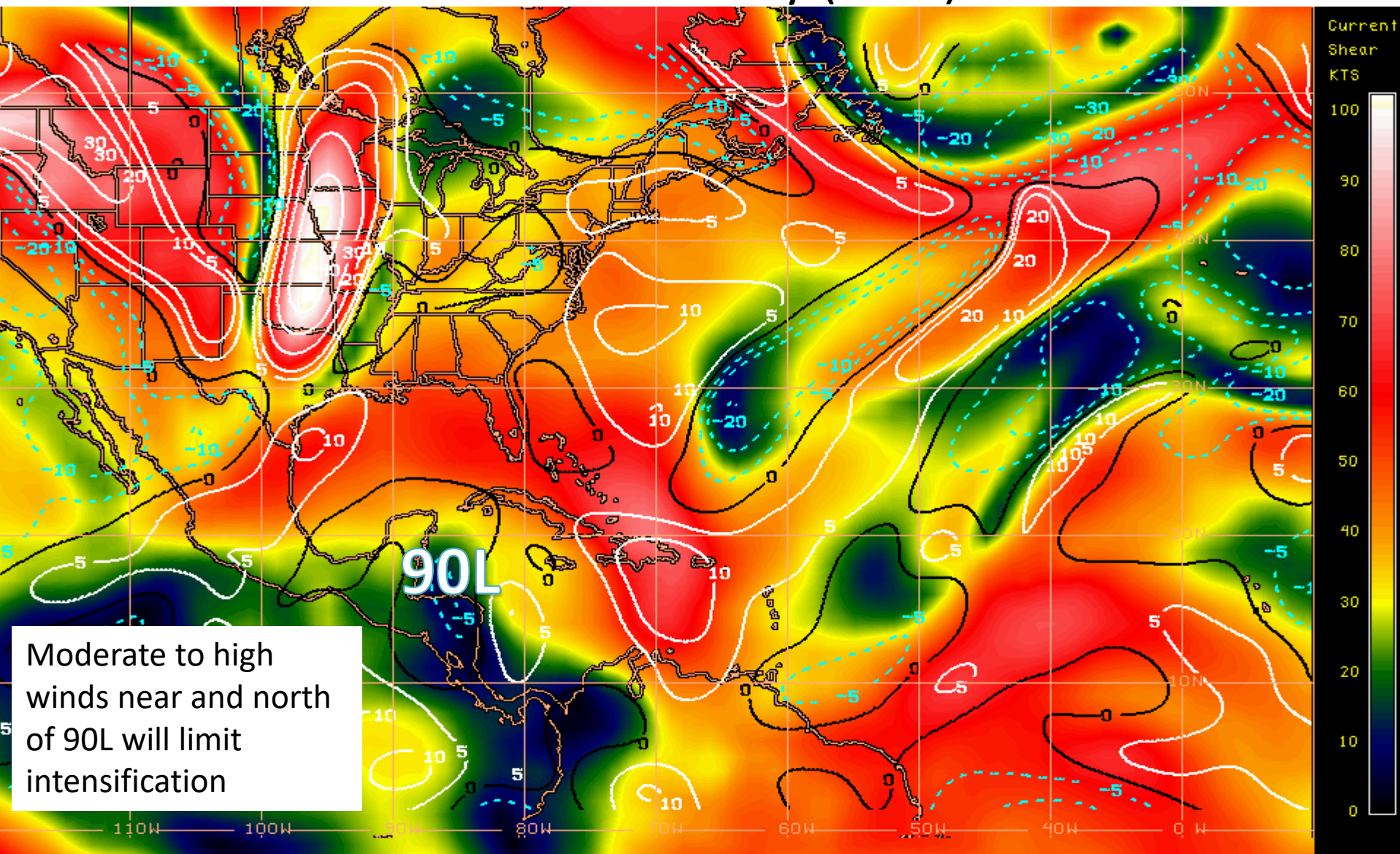


Steering Currents

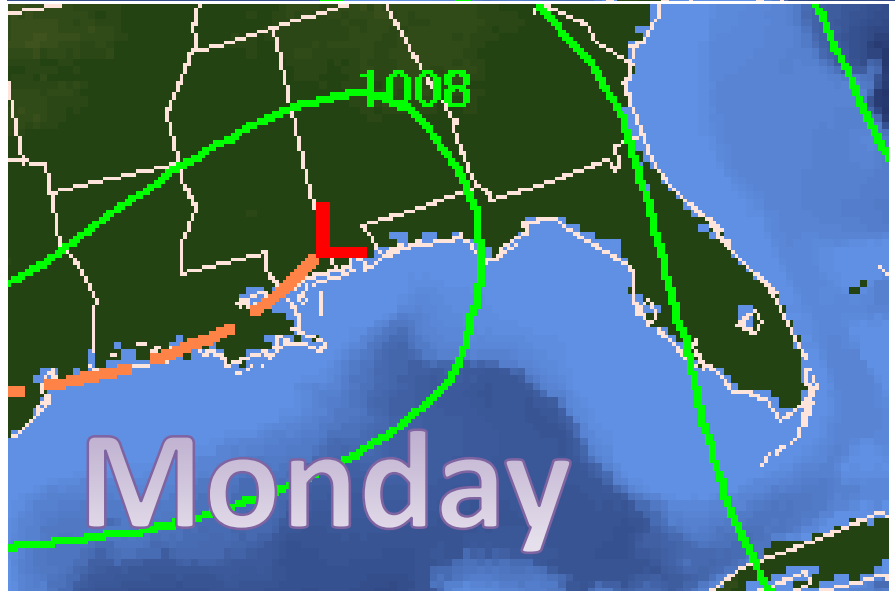
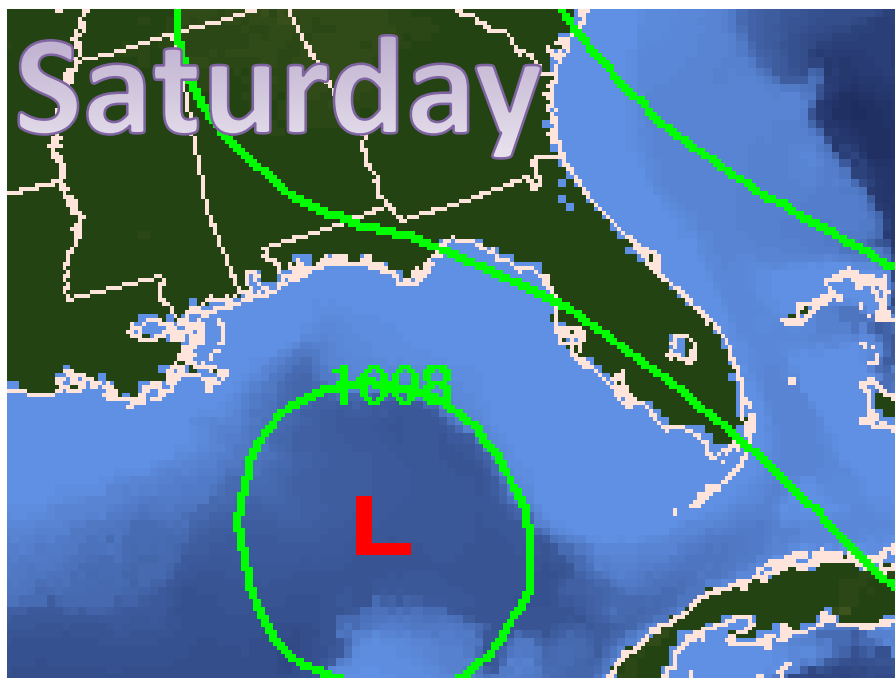
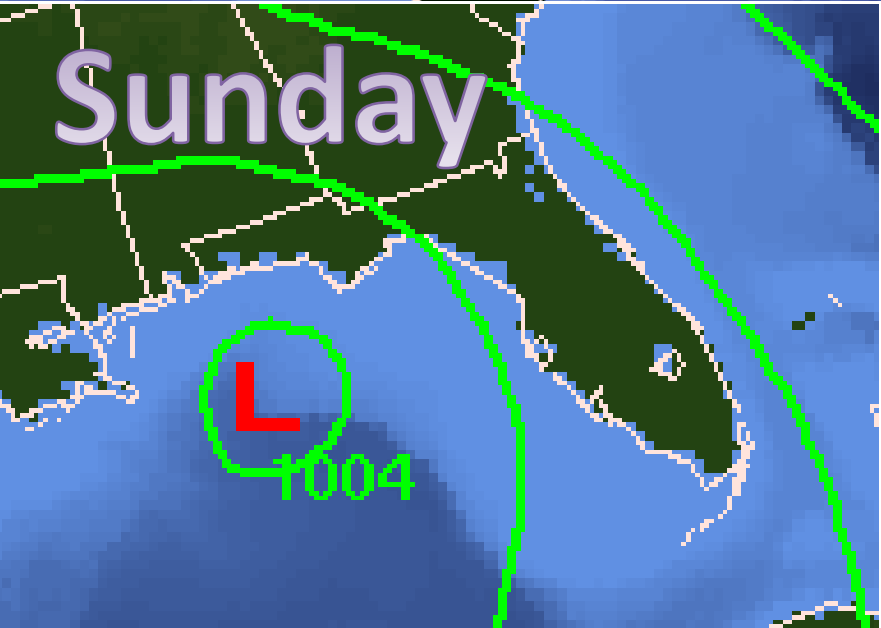
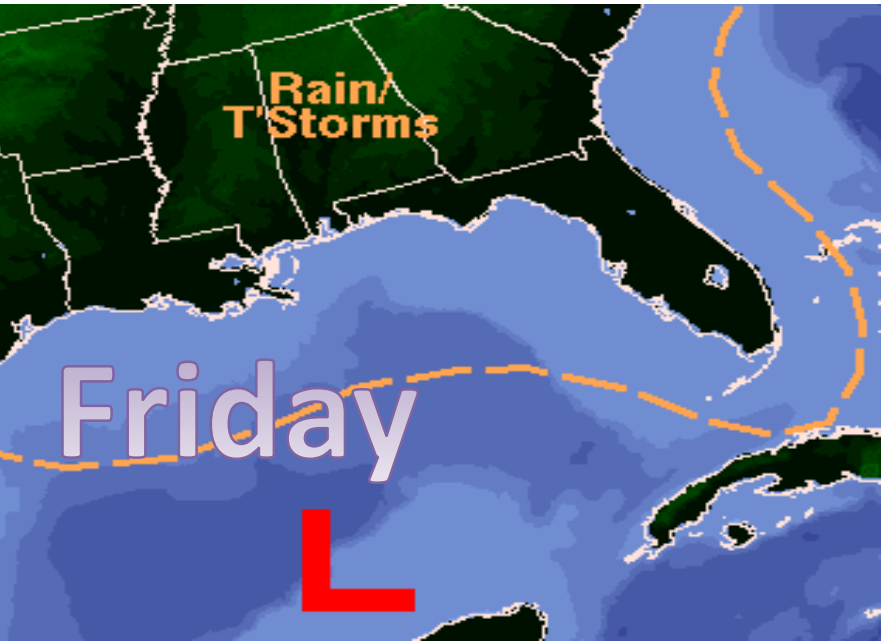
Invest 90L will be steered slowly northward around high pressure near the Bahamas, which is expected to remain in place this week.



Current Wind Shear (shaded) and Shear Tendency (lines)

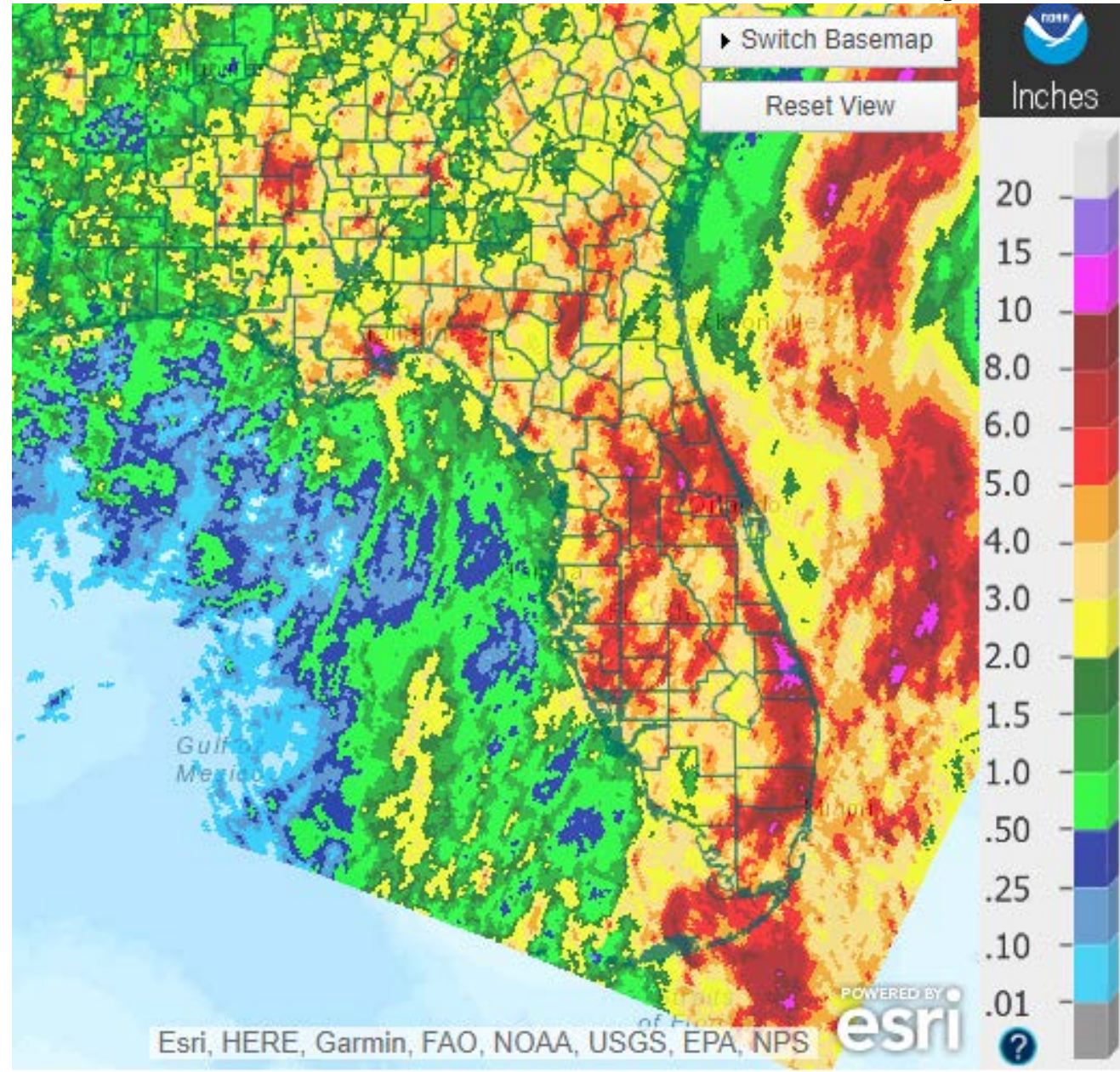


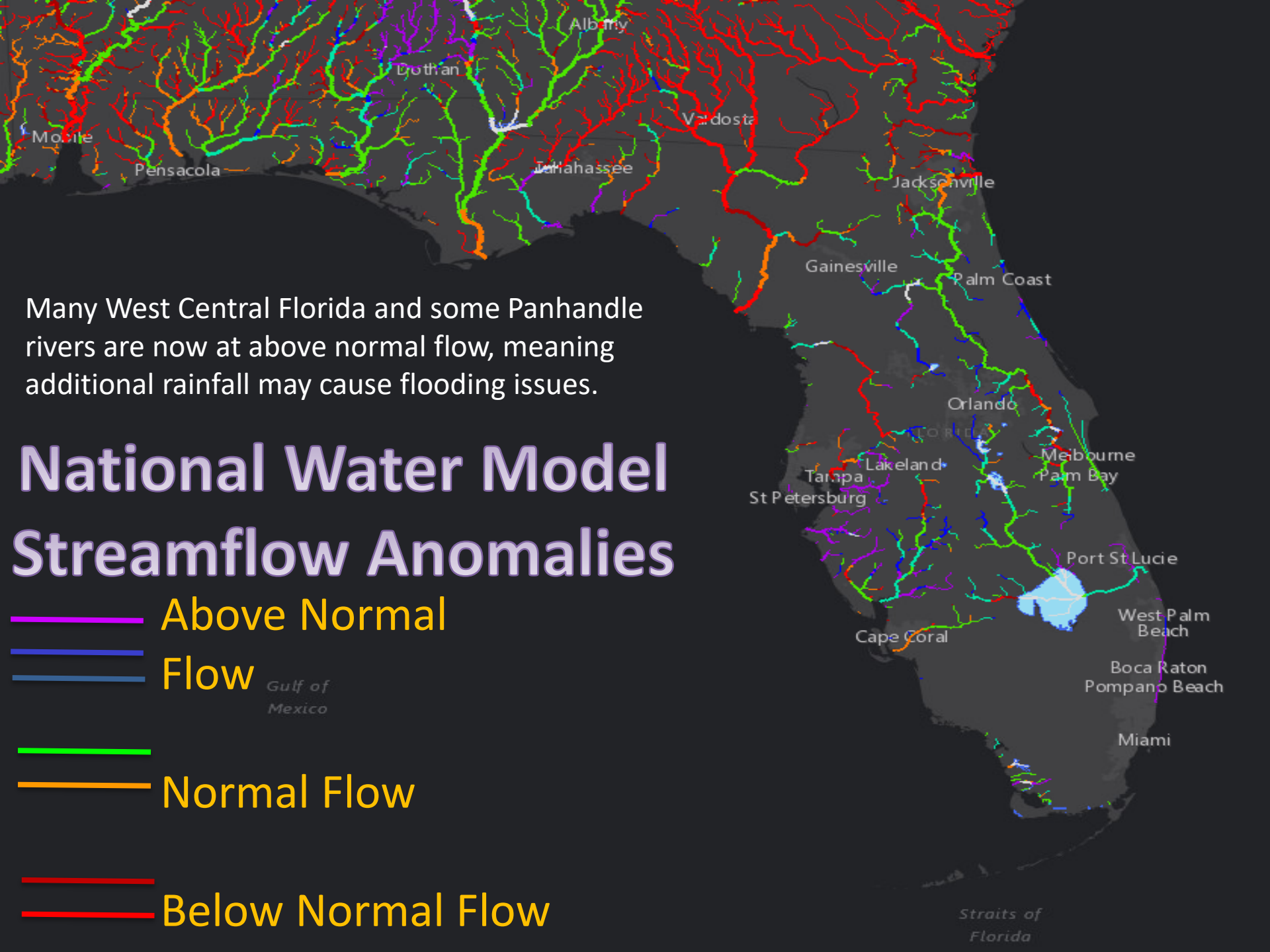
Forecast Weather Map – This Weekend



Observed Rainfall Over Past 7 Days

All of Florida has had well above normal rainfall over the past 7-10 days. This results in saturated grounds that will reduce the amount of time and rain needed to create flood conditions.



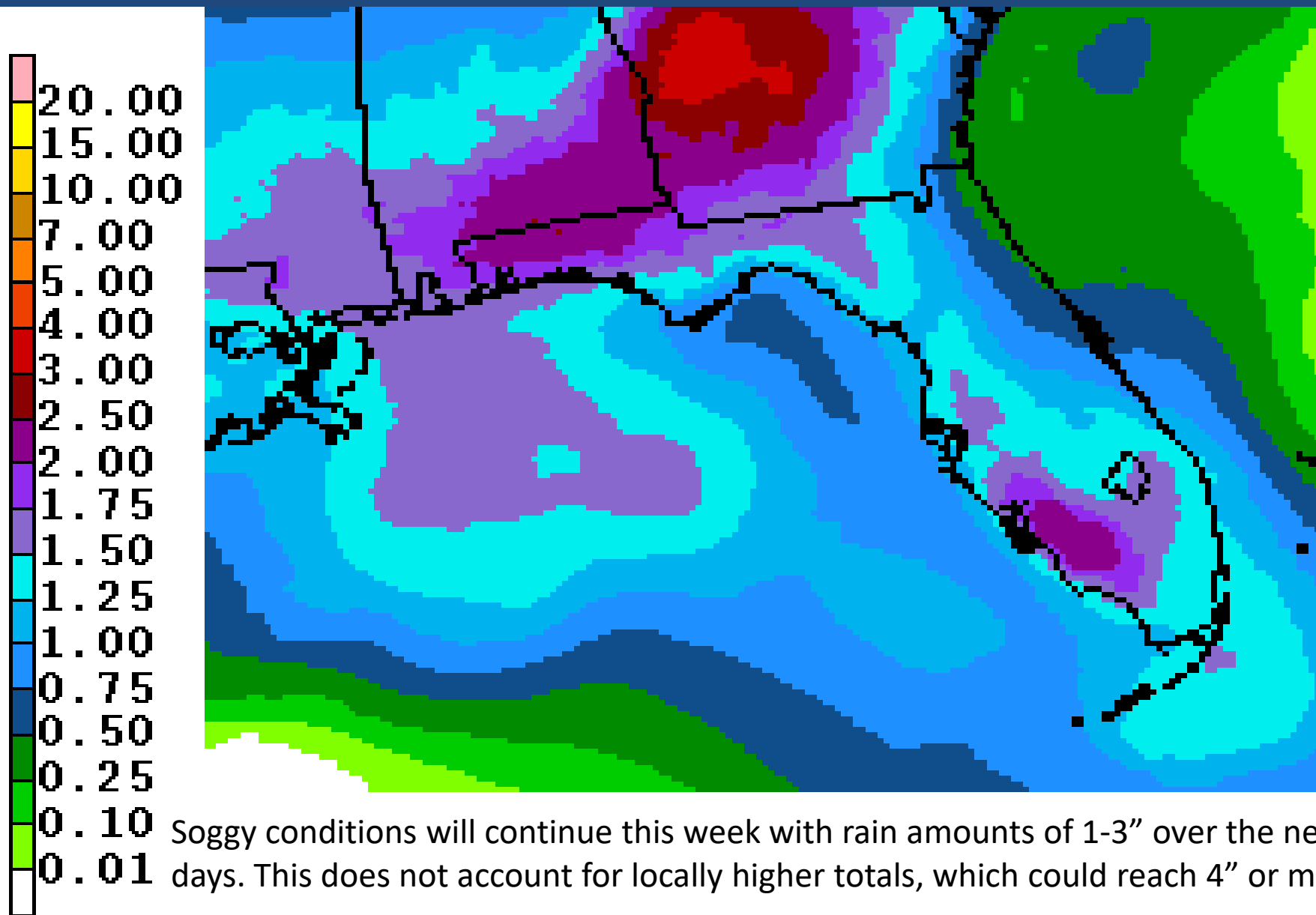


Many West Central Florida and some Panhandle rivers are now at above normal flow, meaning additional rainfall may cause flooding issues.

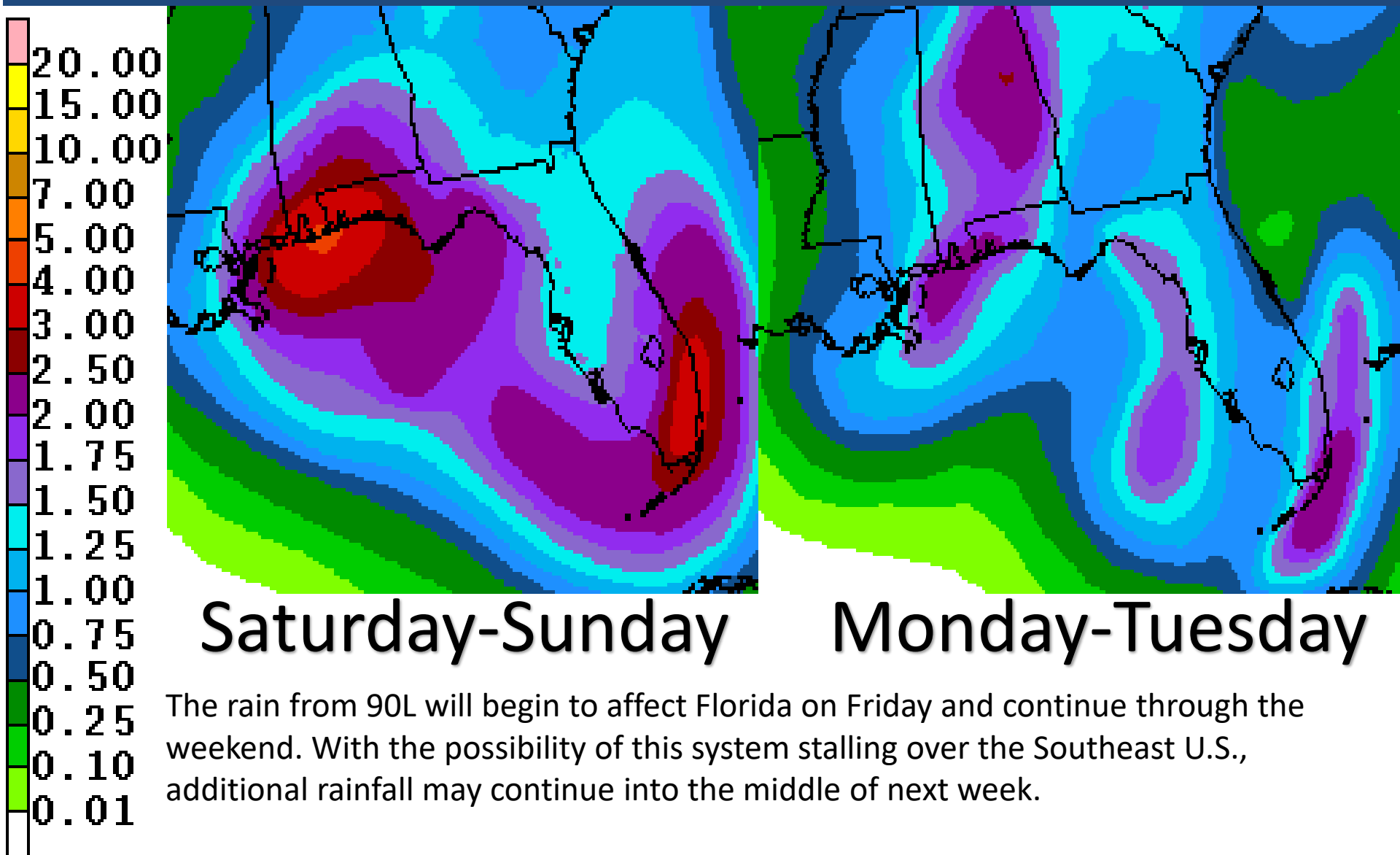
National Water Model Streamflow Anomalies

-  Above Normal
-  Flow
-  Normal Flow
-  Below Normal Flow

Forecast Total Rainfall Accumulations for next 3 Days



Forecast Total Rainfall Accumulations



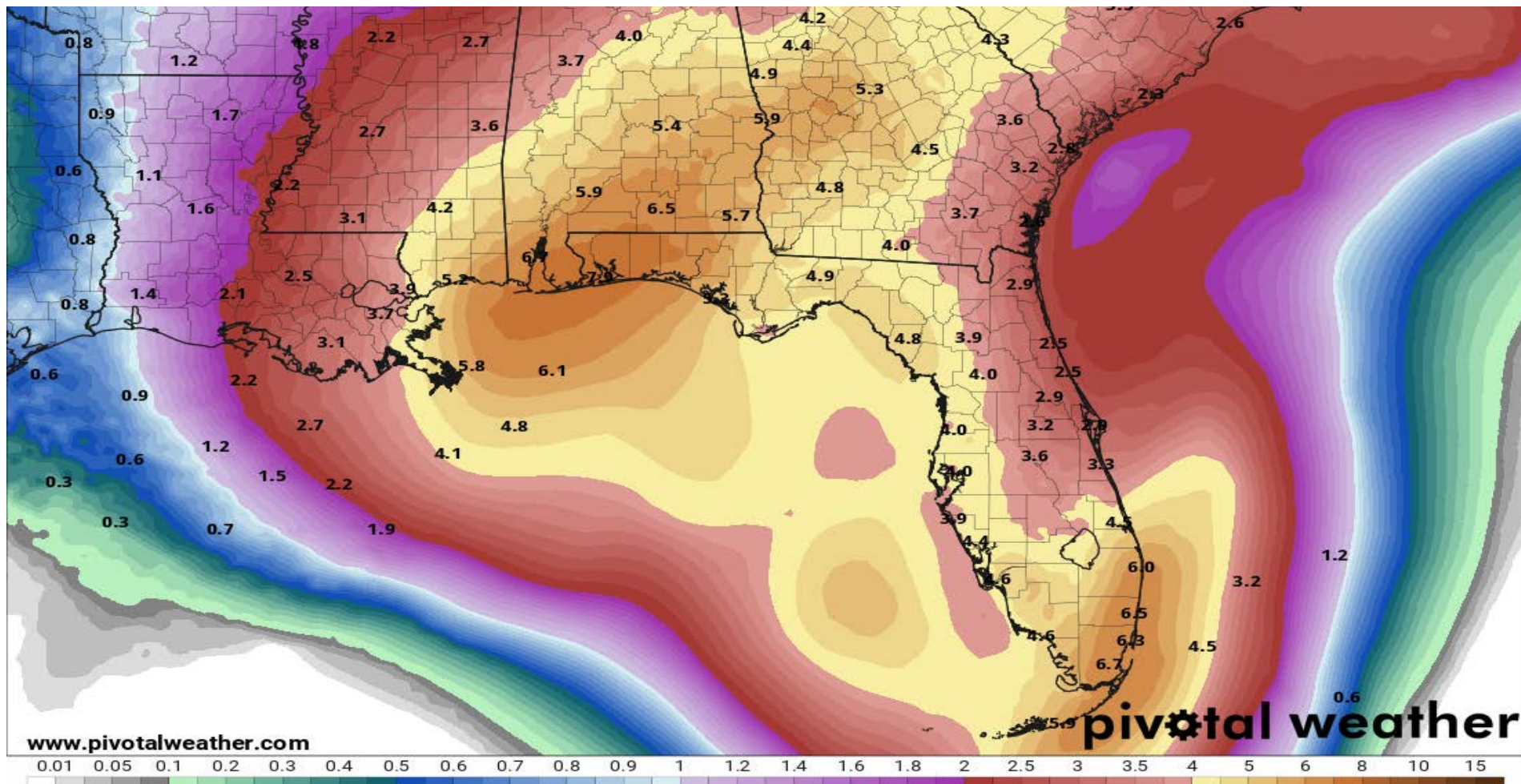
Forecast Total Rainfall Accumulations for next 7 Days

7-Day Precipitation (in)

Ending Wednesday, May. 30, 2018 at 8 a.m. EDT

Init: Wed 2018-05-23 12z WPC

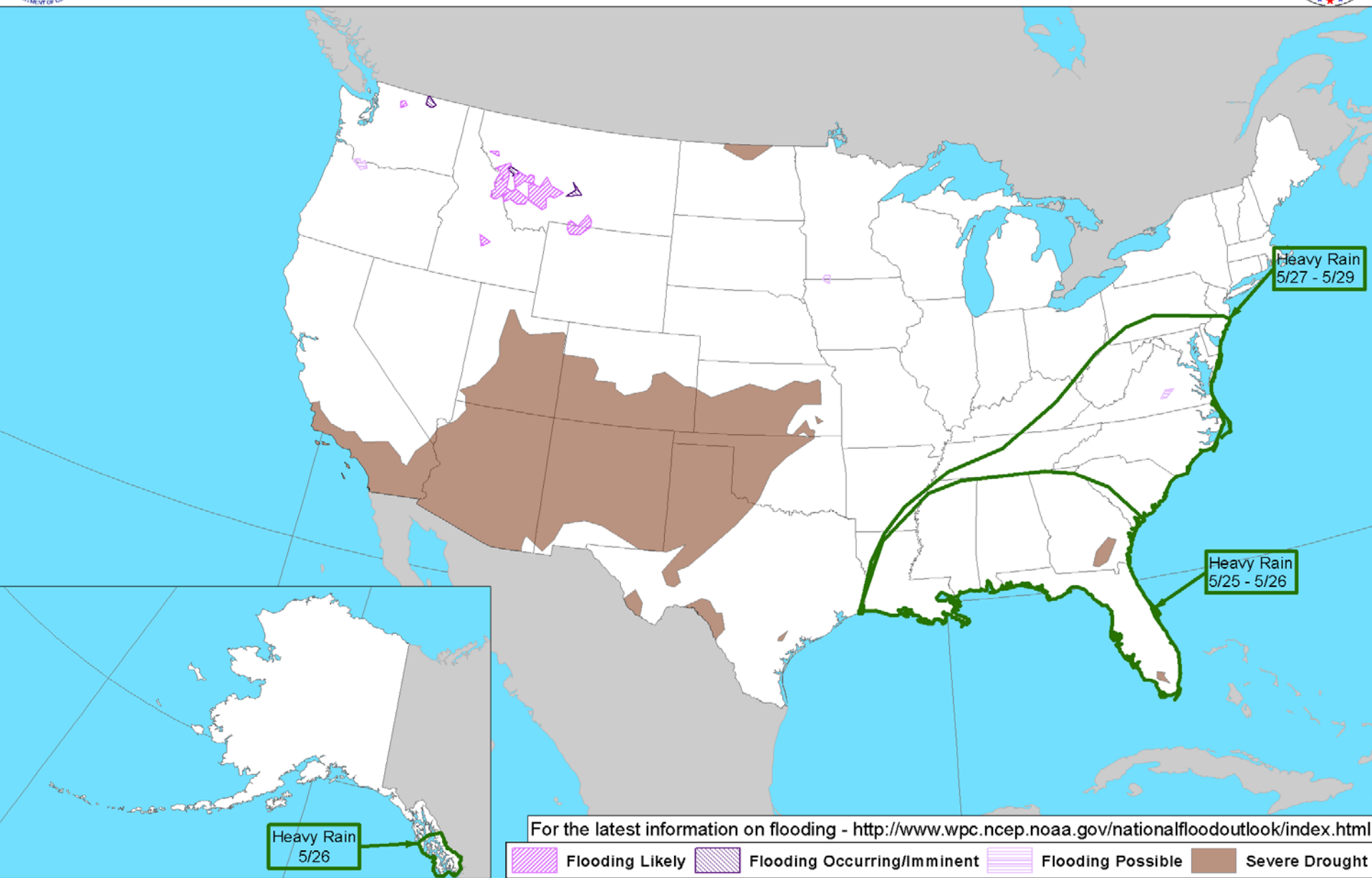
EXACT RAINFALL AMOUNTS WILL DEPEND ON THE STRUCTURE AND TRACK OF 90L, WHICH COULD BE HIGHER THAN WHAT IS SHOWN. At this time, widespread average rainfall amounts of 3-6" inches are possible statewide, with isolated higher totals of 7 to 13 inches possible over portions of the Panhandle and Southeast Florida. This should result in street flooding and river flooding, especially in areas where several storms repeatedly move over the same area.





Day 3-7 U.S. Hazards Outlook

Valid: 05/25/2018-05/29/2018



Climate Prediction Center

Made: 05/22/2018 3PM EDT

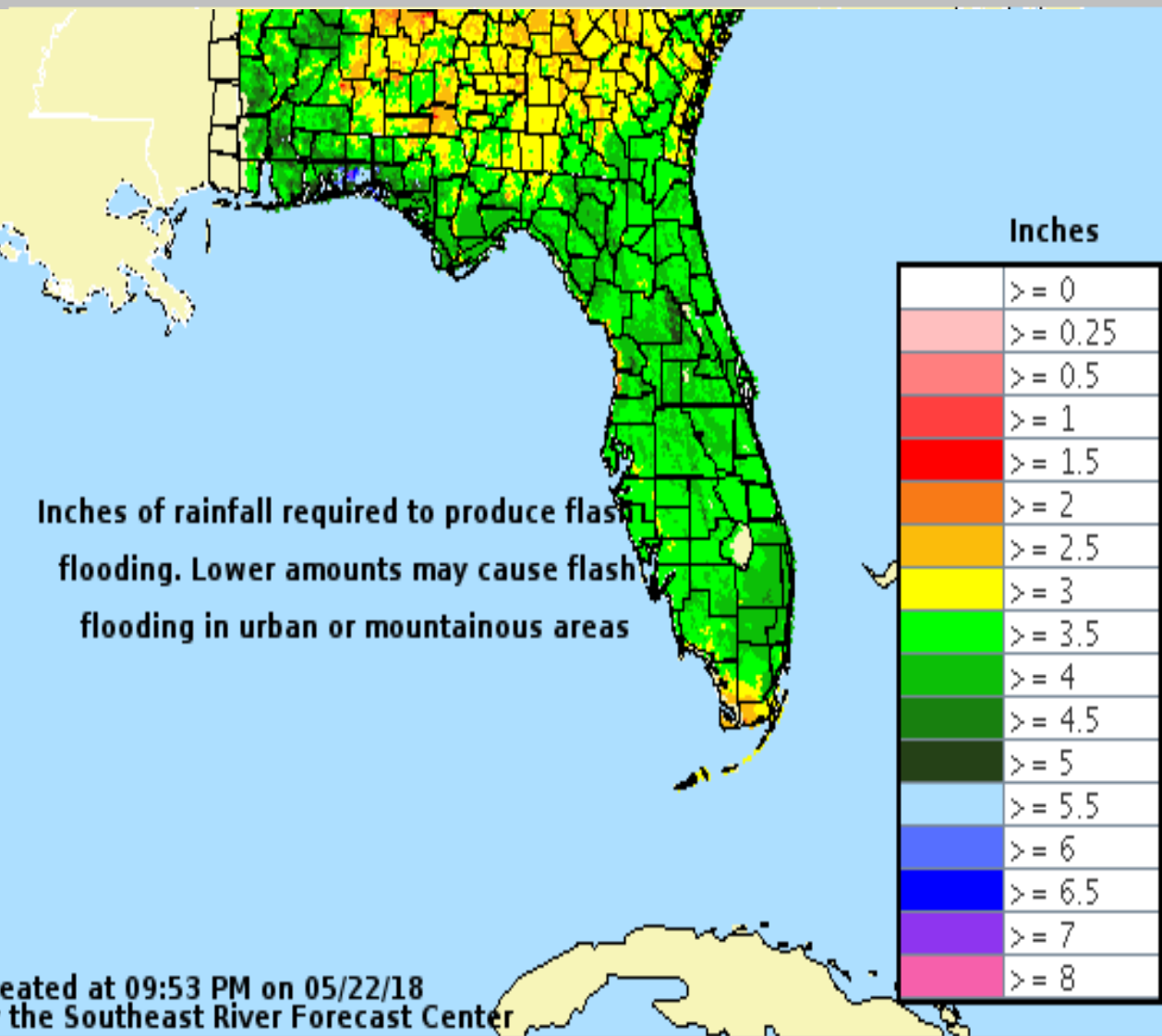
Follow us:

www.cpc.ncep.noaa.gov



3-hr Flash Flood Guidance

Valid: 05/22/2018 @ 09:53 PM

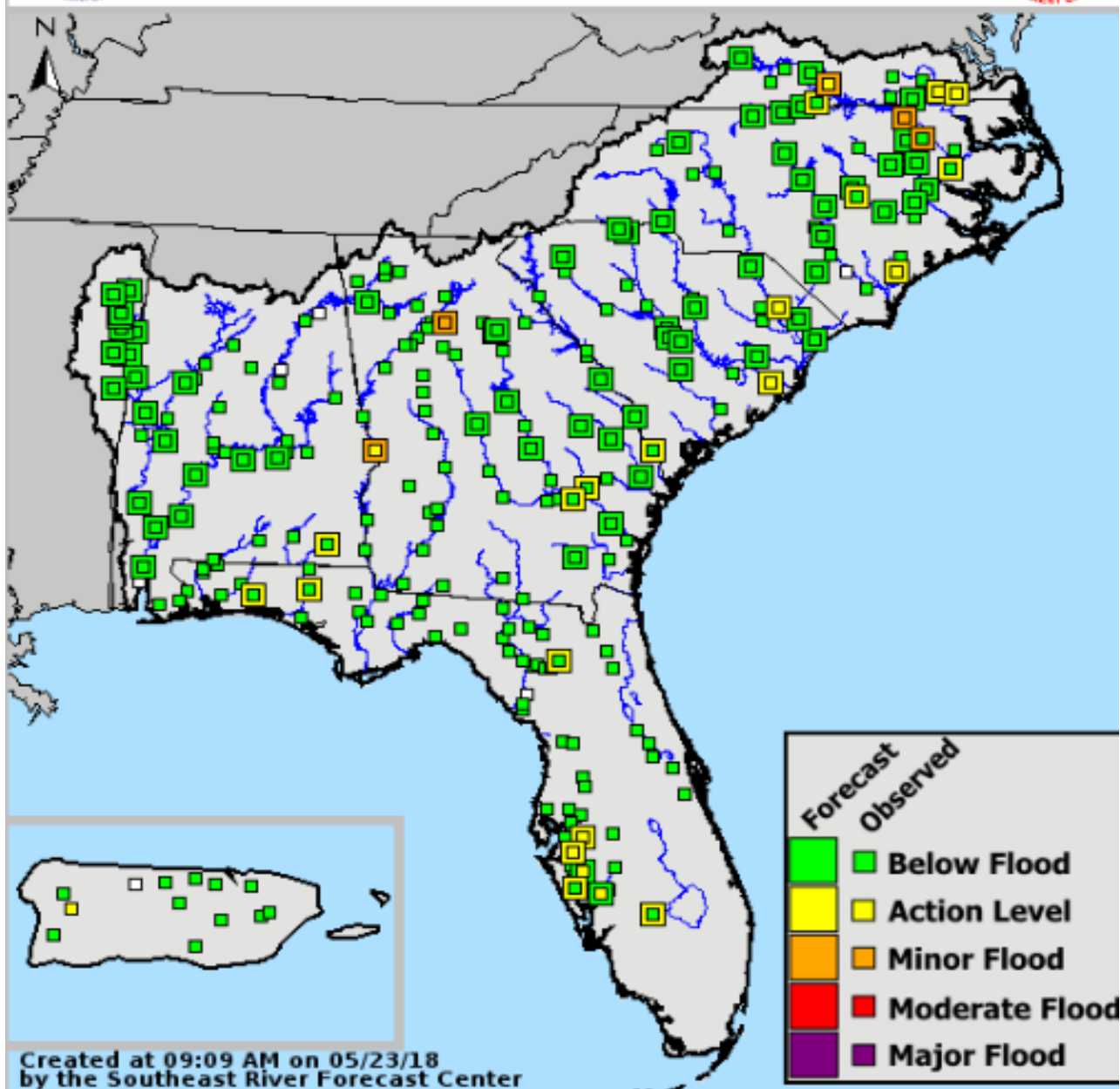


- Since soils are already saturated, any additional heavy rain (generally 3-4" in less than 3 hours) will cause flash flooding issues.
- Lower amounts, or 3-6" over a longer time period can still cause flooding of roads and low-lying areas.

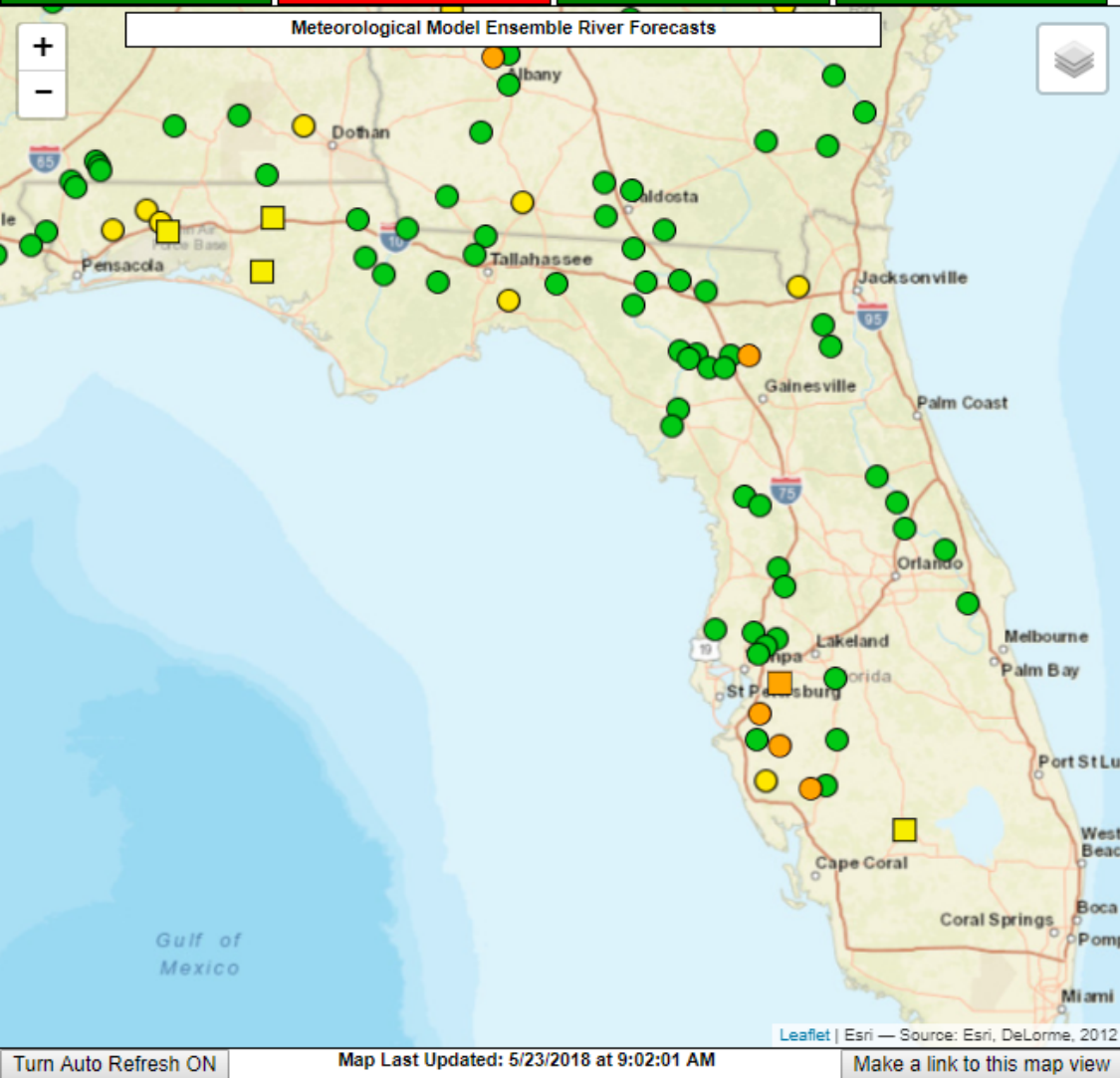


SERFC River Condition











Valid: 05/23/2018 @ 09:09 AM



- Note: hydrograph forecasts only account for anticipated rainfall over the next 48 hours. Although a recession is forecast, additional rises this weekend are likely.



In addition to the flash flooding potential, minor to moderate flooding on area rivers will be possible, but this will ultimately be dependent on where the heaviest rain falls. The areas for concern are currently in West Central Florida, the Florida Panhandle, and the Santa Fe River basin and Paynes Prairie State Park.

News Legend		
News Items less than 24 hours old	News Items 1 to 7 days old	No current News Items
Map Legend		
Chance of Exceedance		River Forecast Centers
30%	Level	70%
	Action	 Middle Atlantic River Forecast Center
	Minor Flood	 Northeast River Forecast Center
	Moderate Flood	 Ohio River Forecast Center
	Major Flood	 Southeast River Forecast Center
 = less than 30% chance of reaching Action level		
 = no critical levels defined for this point		

Summary

- A broad surface low (Invest 90L) centered near the coast of northeastern Belize continues to produce a large area of cloudiness and showers extending from the northwestern Caribbean Sea across Cuba and into the Florida Straits.
- Little development is expected during the next couple of days due to strong upper-level winds and proximity to land.
- However, environmental conditions are then forecast to become more conducive for development, and a subtropical or tropical depression could form this weekend over the eastern or central Gulf of Mexico.
- As a result, this system has a 0% chance of becoming a tropical cyclone within 48 hours, but a 60% (medium) chance of becoming a tropical depression or tropical storm within the next 2-5 days.
- There is still a fair amount of uncertainty with regard to the development, the movement and the timing of the system.
- The full suite of computer models are not available yet for this system and global models are in disagreement on track, which is typical for newly developing systems. The range of possibilities continues to lie between the central Gulf Coast and southwestern Florida, but there is more confidence in a central Gulf Coast track. In addition, global models agree that significant strengthening is not likely and in terms of wind, should be a fairly weak storm.
- The low pressure system could reach the northern Gulf coast region this weekend and then linger over the area into the early part of next week, increasing the rainfall totals and threat for flooding.
- Regardless of where the center of the system moves, upper level winds will continue to push a majority of the associated storminess to the east of the system.
- If named, the first name on the 2018 Atlantic Storm name list is Alberto.

Florida Outlook:

- Regardless of development, locally heavy rainfall and flooding will be the main concern during the next several days, especially this weekend.
- Widespread rainfall amounts of 3-6" are expected statewide, with locally higher amounts of 7-12+" possible.
- Flash Flood Watches are not in effect, but will likely be issued later this week.
- River flooding will also be a concern for portions of the state. River Flood Warnings are currently in effect for the Alafia River. Additional river flood warnings will be possible next week.
- Increased wave heights of 2-5' are also expected along the Panhandle and East Coast and will lead to a high risk of rip currents for the holiday weekend.
- Any other possible impacts late this week through early next week (wind, tornadoes, and surge) will depend heavily on how this system evolves.

Another briefing packet will be issued Thursday morning. For more information on this system visit the NHC website at www.nhc.noaa.gov



TROPICAL UPDATE

Created by:

Amy Godsey, Chief State Meteorologist
amy.godsey@em.myflorida.com

State Meteorological Support Unit
Florida Division of Emergency
Management

Users wishing to subscribe (approval pending) to this distribution list, register at https://public.govdelivery.com/accounts/FLDEM/subscriber/new?topic_id=SERT_Met_Tropics.

Other reports available for subscription are available at <https://public.govdelivery.com/accounts/FLDEM/subscriber/new?preferences=true>