



# **TROPICAL UPDATE**

**10 AM EDT**

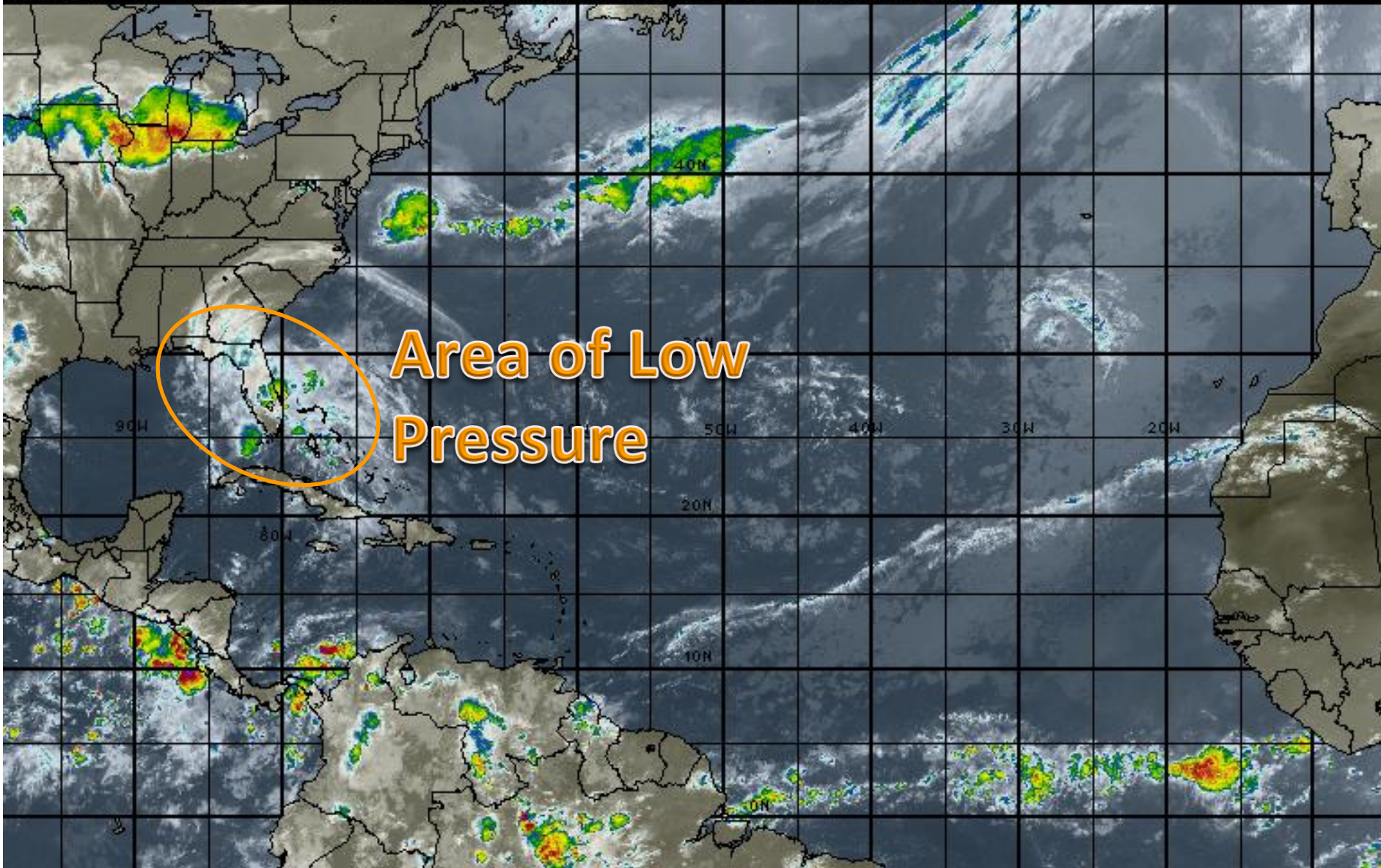
**Monday, May 14, 2018**

**Gulf Of Mexico Disturbance**

**This update is intended for government and emergency response officials, and is provided for informational and situational awareness purposes only. Forecast conditions are subject to change based on a variety of environmental factors. For additional information, or for any life safety concerns with an active weather event please contact your County Emergency Management or Public Safety Office, local National Weather Service forecast office or visit the National Hurricane Center website at [www.nhc.noaa.gov](http://www.nhc.noaa.gov).**

# Atlantic Basin Satellite Image

12:00 14-MAY-2018 GMT Copyright © 1998-2018 WSI Corporation <http://www.wsi.com>





# Five-Day Graphical Tropical Weather Outlook

National Hurricane Center Miami, Florida



www.hurricanes.gov

Disturbance 1

1. A large area of cloudiness, showers, and thunderstorms extending from the eastern Gulf of Mexico across much of the Florida Peninsula is associated with a broad surface low pressure area interacting with an upper-level low. This system could acquire some subtropical or tropical characteristics while it moves slowly northward across the eastern Gulf of Mexico during the next few days.

\* Formation chance through 48 hours...**low**...30 percent.

\* Formation chance through 5 days...**medium**...40 percent.

1  
(40%)

9:35 am EDT  
Mon May 14 2018

100W 90W 80W 70W 60W 50W 40W 30W 20W

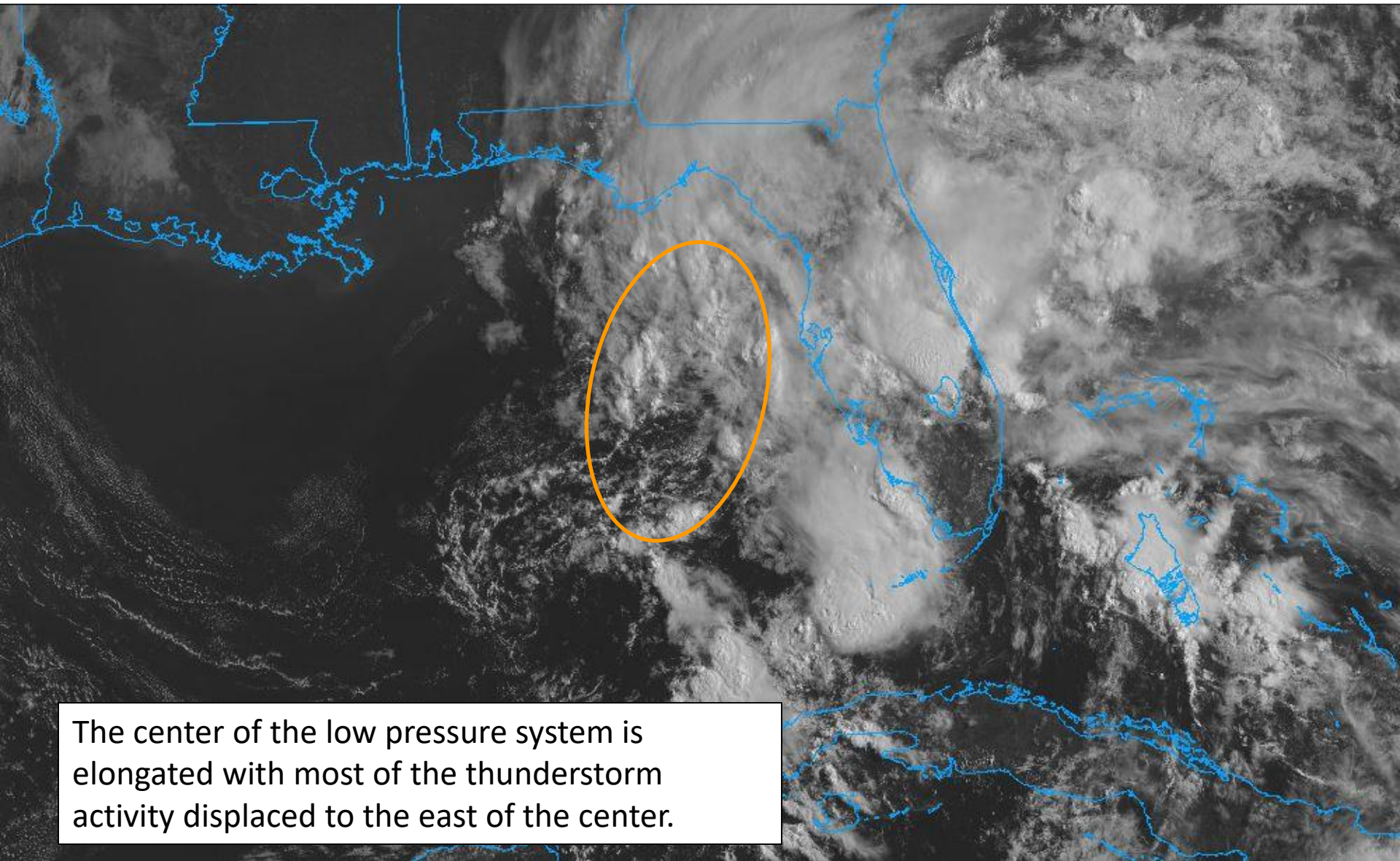
Current Disturbances and Five-Day Cyclone Formation Chance: < 40% 40-60% > 60%

Tropical or Sub-Tropical Cyclone: Depression Storm Hurricane

Post-Tropical Cyclone or Remnants



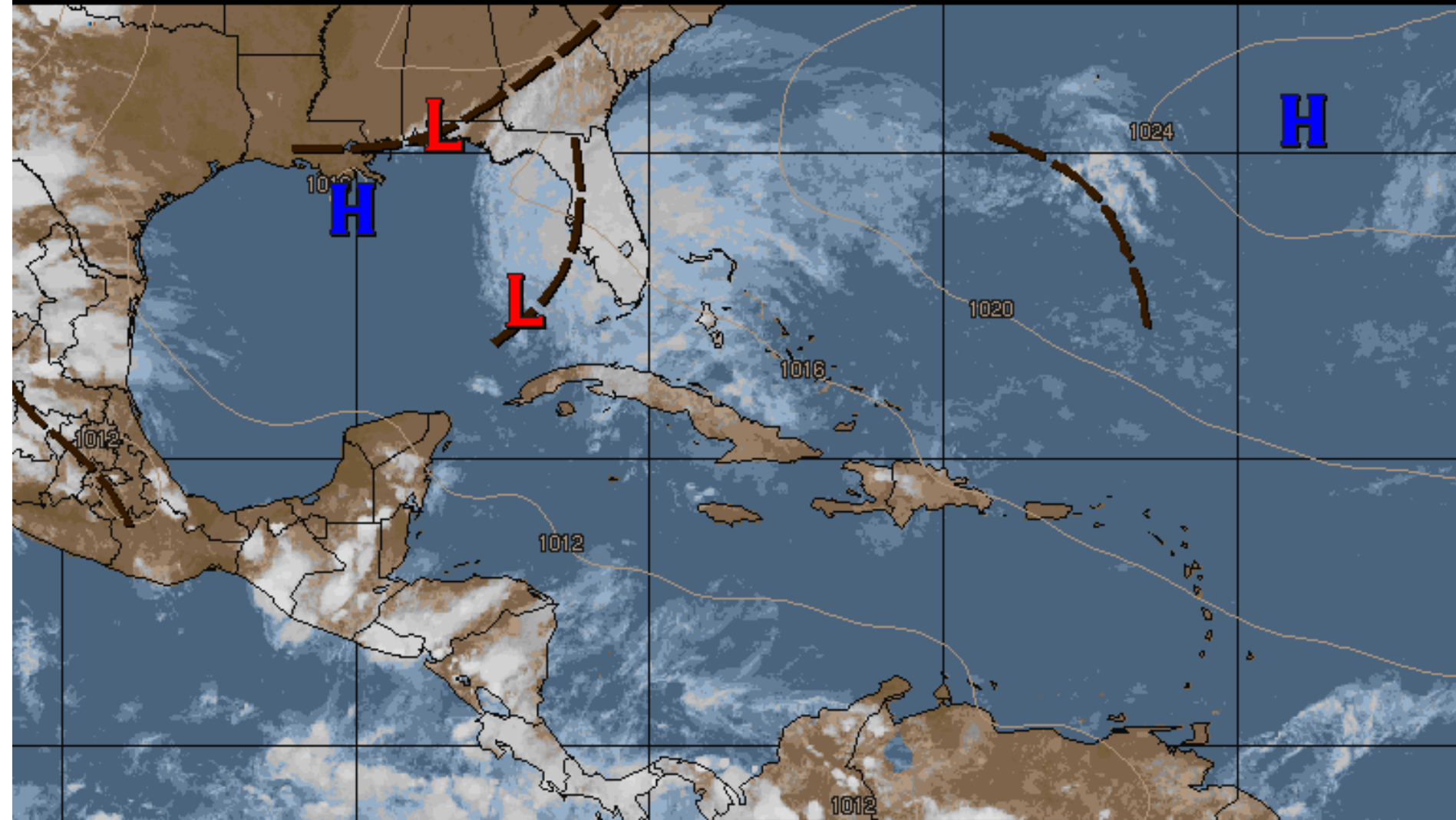
# Satellite Image



The center of the low pressure system is elongated with most of the thunderstorm activity displaced to the east of the center.

# Western Atlantic Surface Map

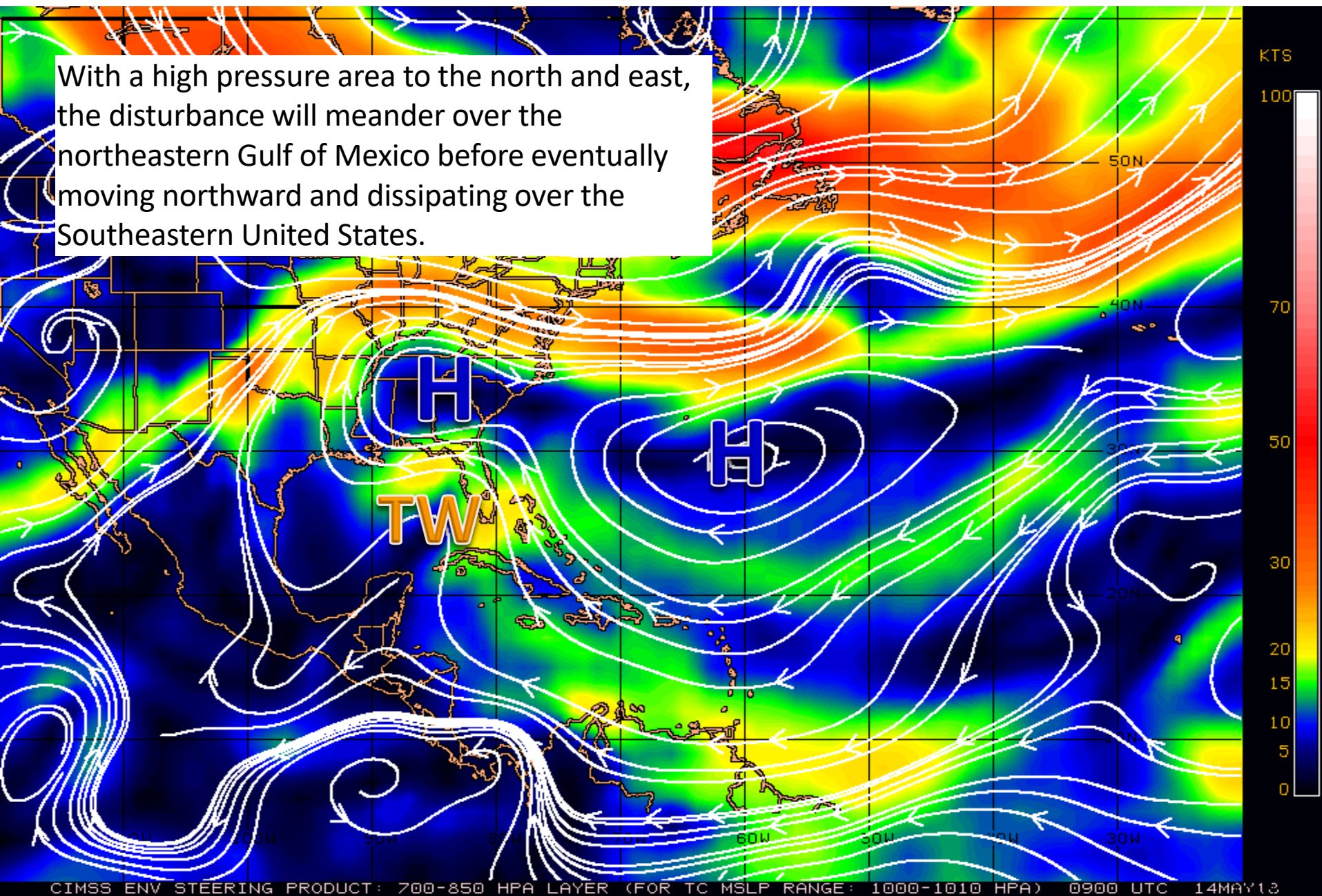
01:00 14-MAY-2018 GMT Copyright © 1998-2018 WSI Corporation <http://www.wsi.com>



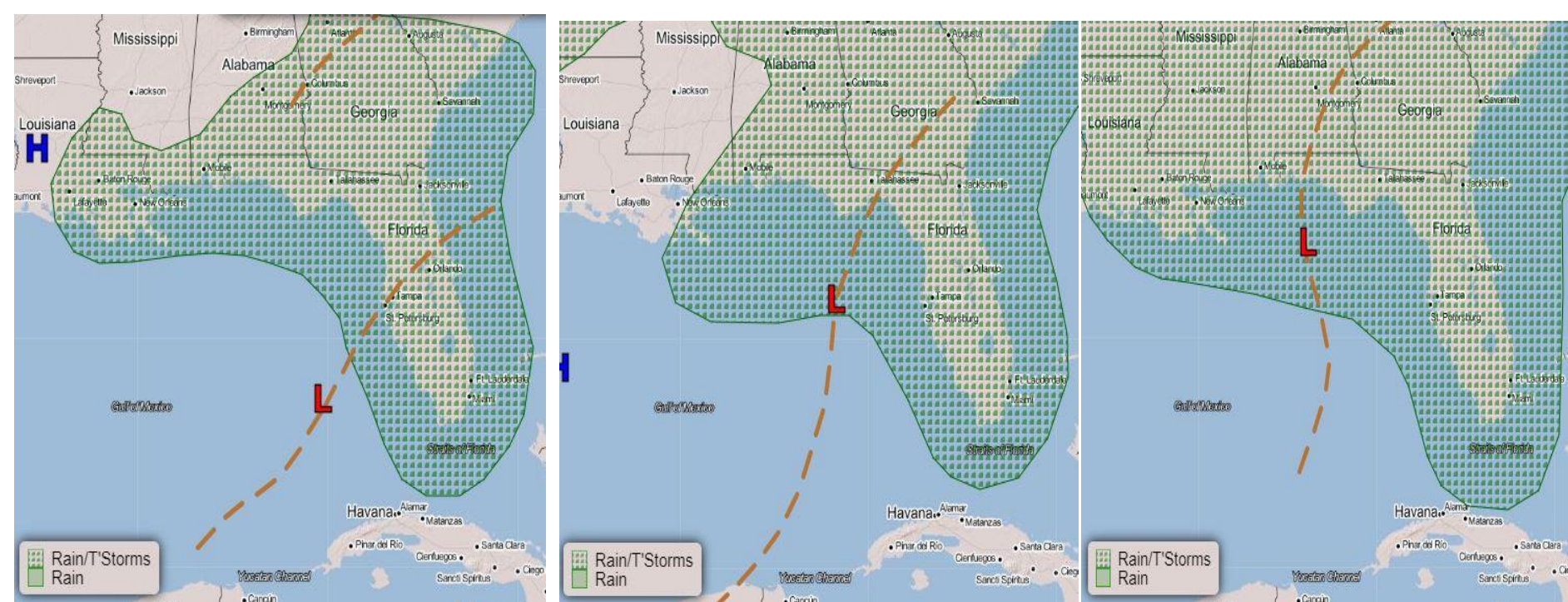


# Steering Currents

With a high pressure area to the north and east, the disturbance will meander over the northeastern Gulf of Mexico before eventually moving northward and dissipating over the Southeastern United States.



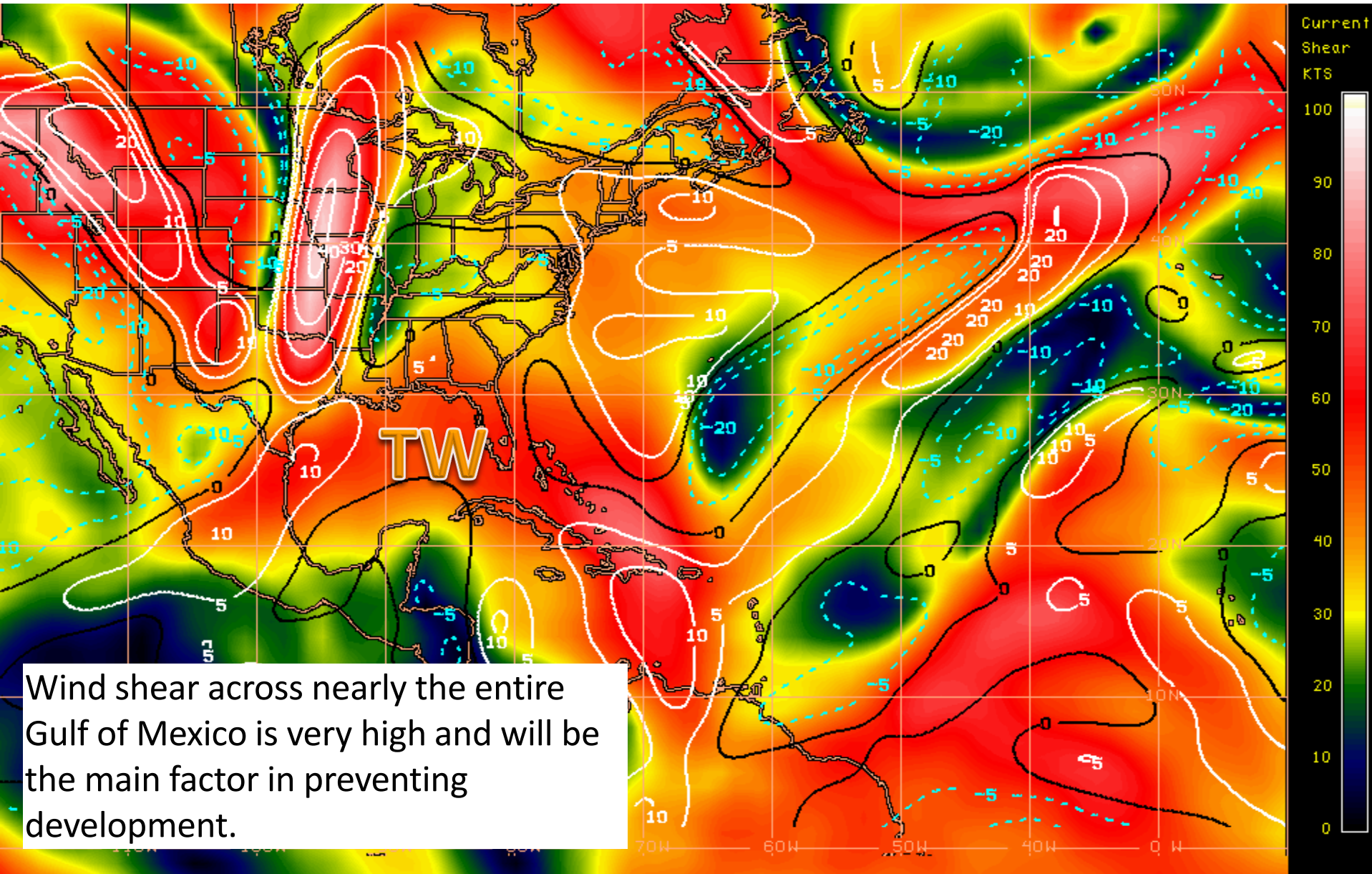
# Surface Weather Maps for Today (Left), Tomorrow (Middle), and Wednesday (Right)



The system will drift north today, west tomorrow, and then northward on Wednesday towards the Florida Panhandle.



# Current Wind Shear (shaded) and Shear Tendency (lines)

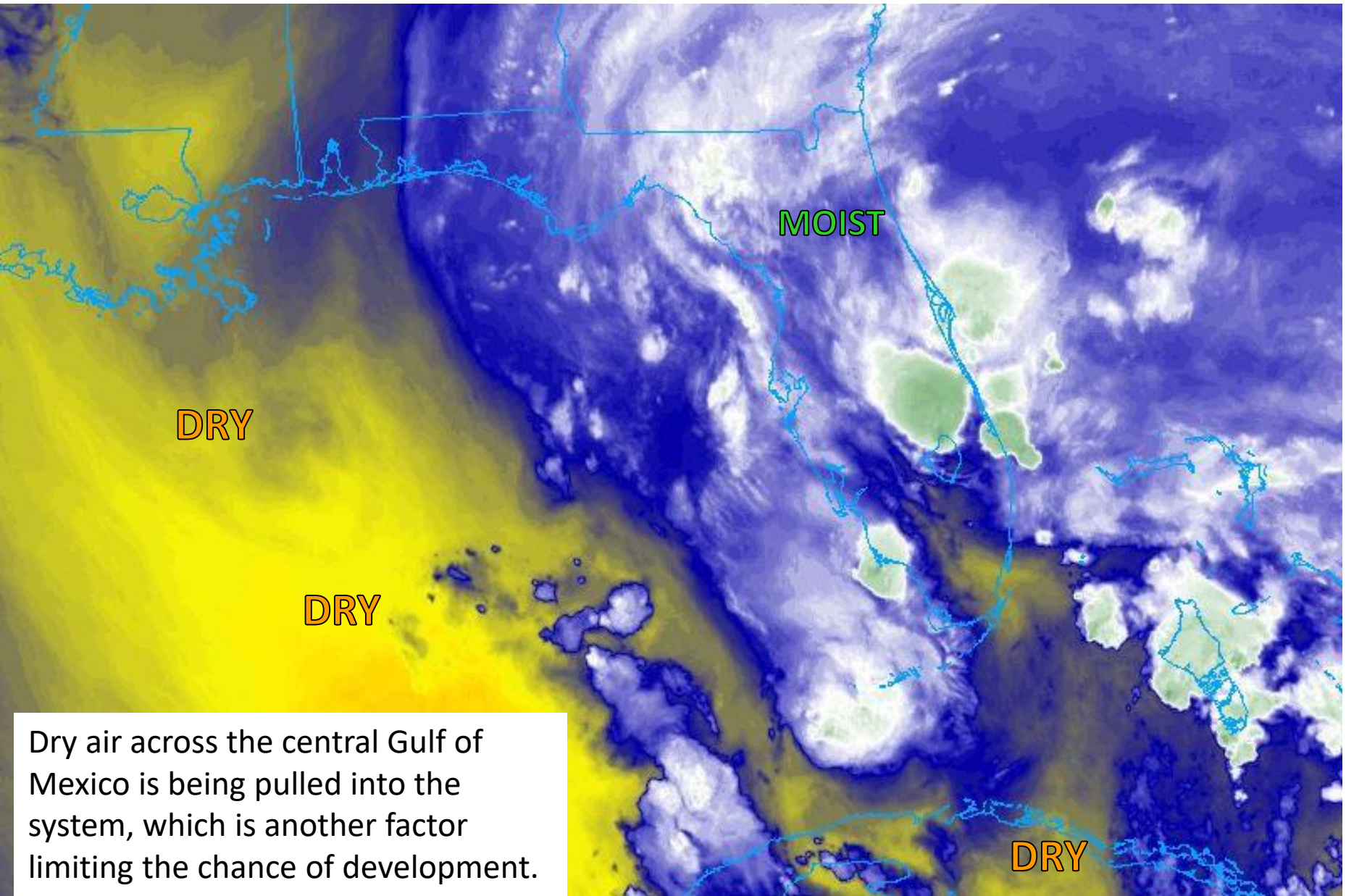


Wind shear across nearly the entire Gulf of Mexico is very high and will be the main factor in preventing development.

Shear Tendency (KTS) Over Past 24 Hours: Increasing — Decreasing ----



# Water Vapor Satellite Image

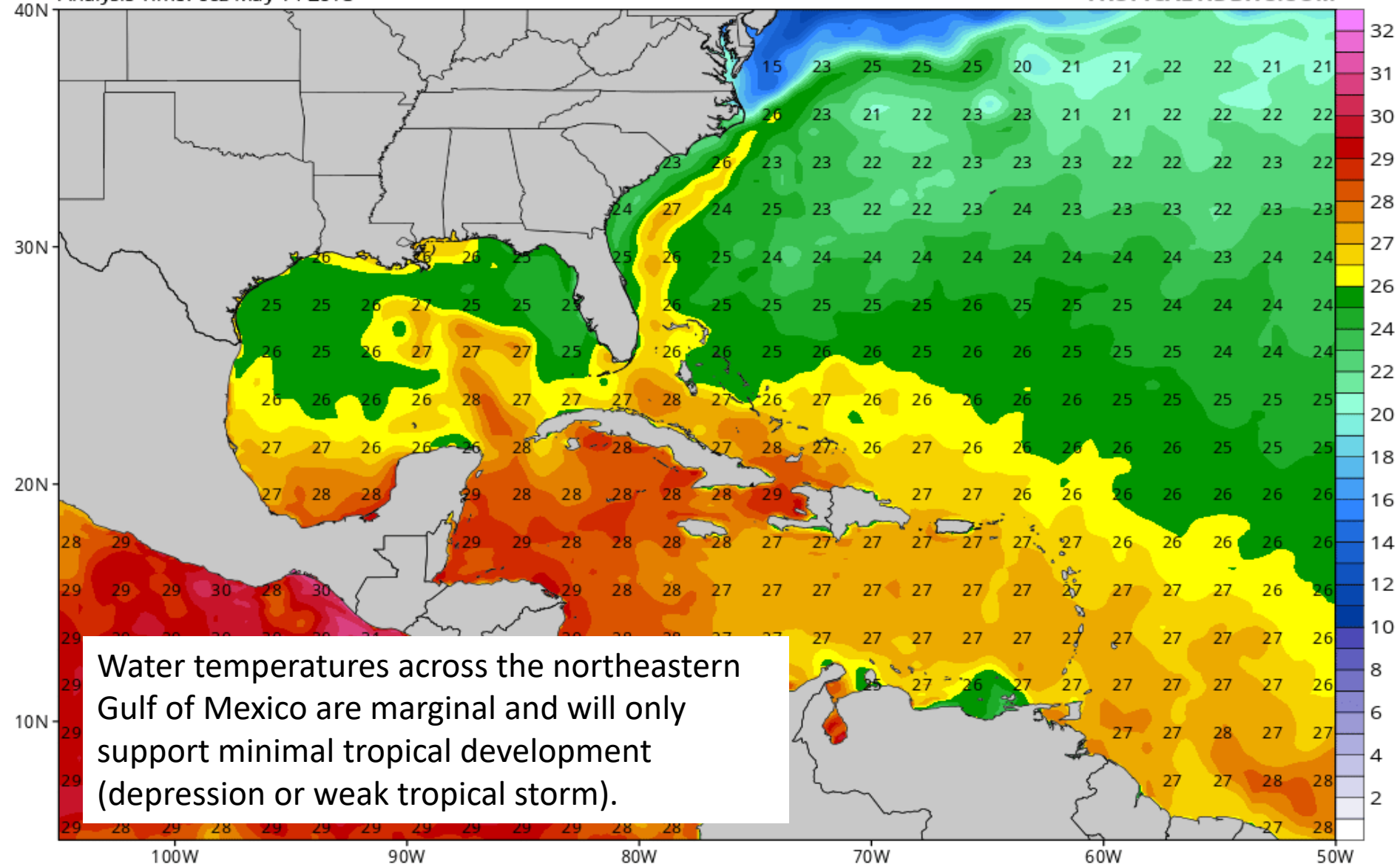


# Water Temperatures

CDAS Sea Surface Temperature (°C)

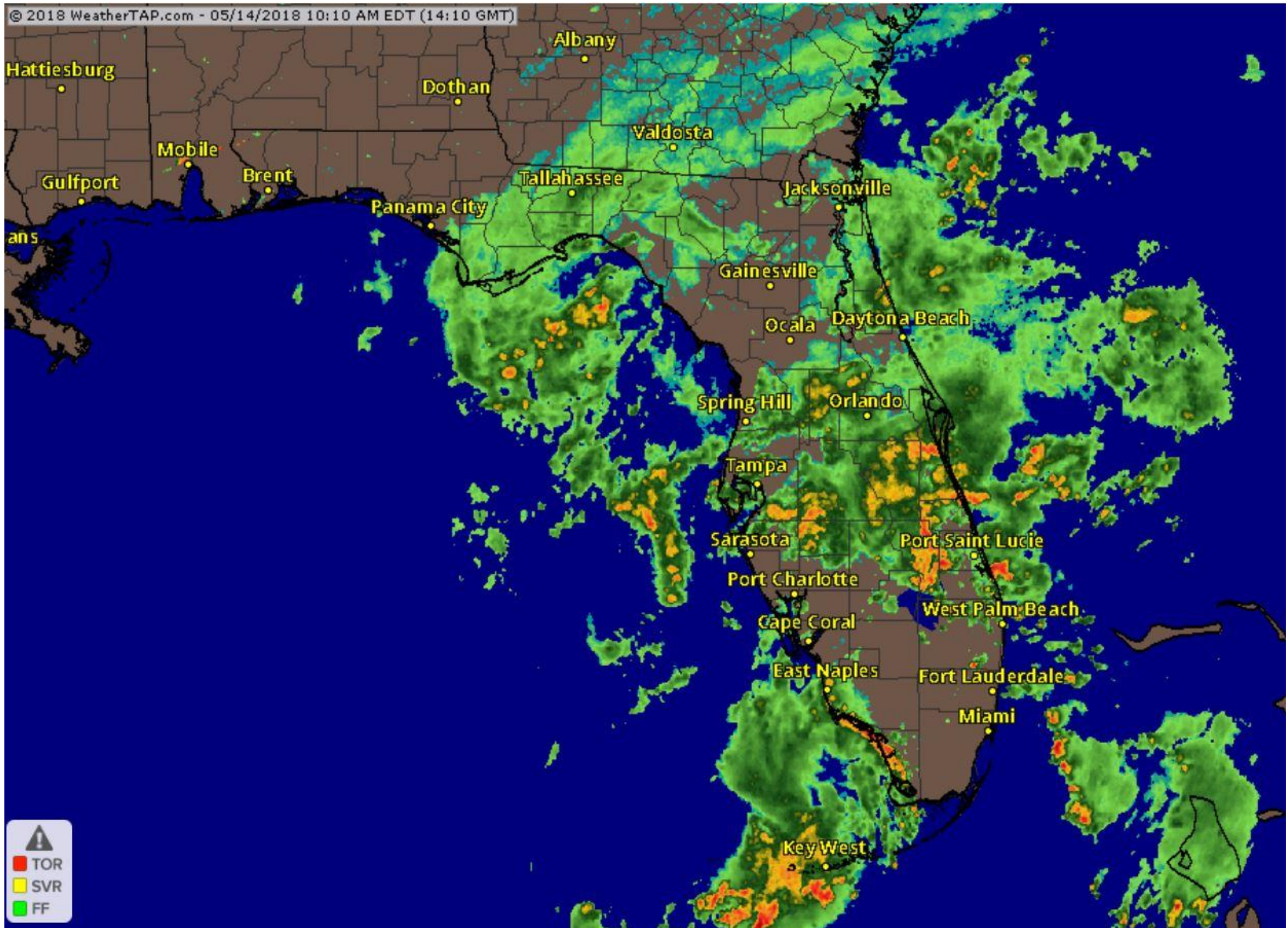
Analysis Time: 06z May 14 2018

TROPICALTIDBITS.COM

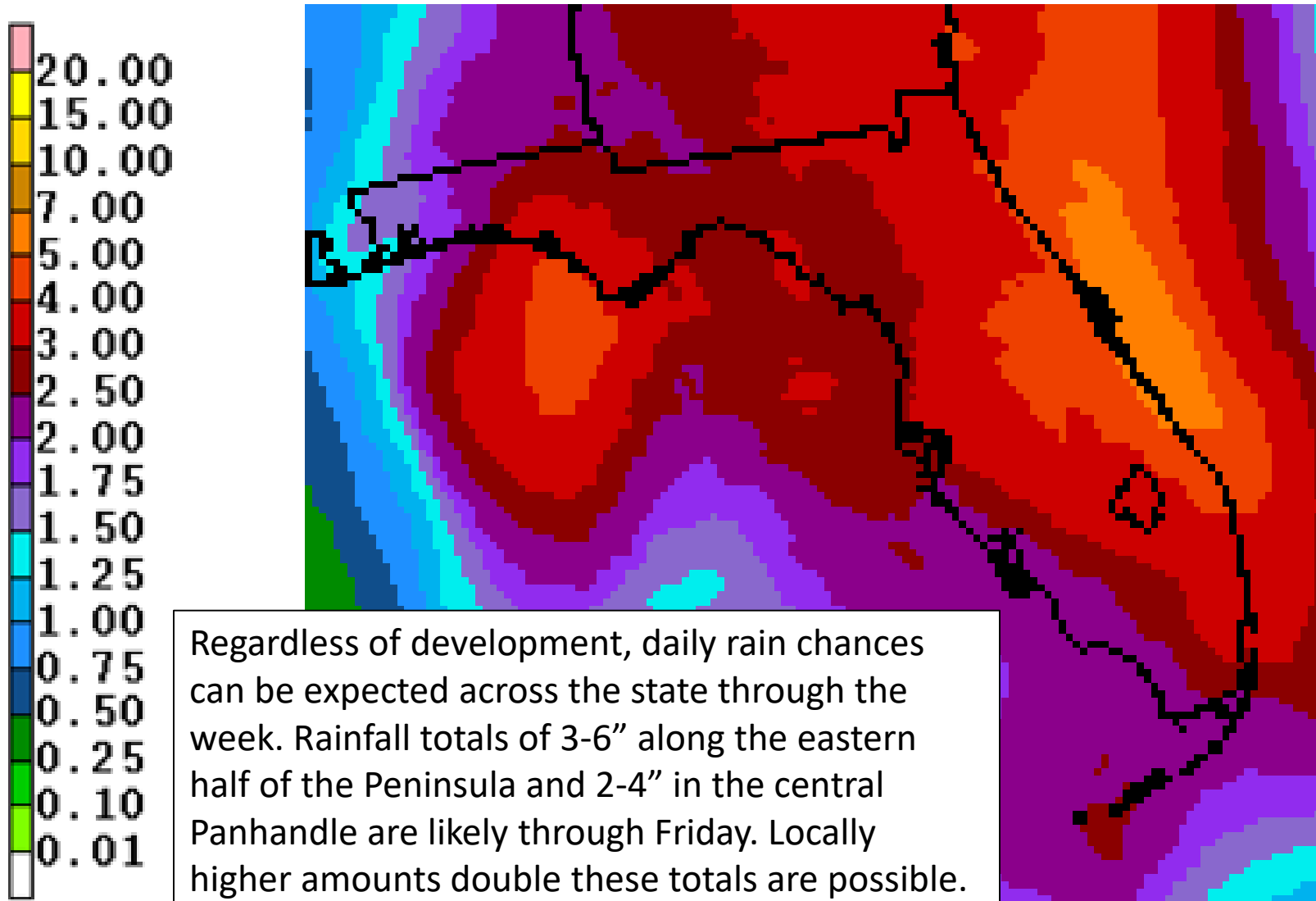




# State Radar as of 10:15 AM EDT



# Forecast Total Rainfall Accumulation Next 5 Days

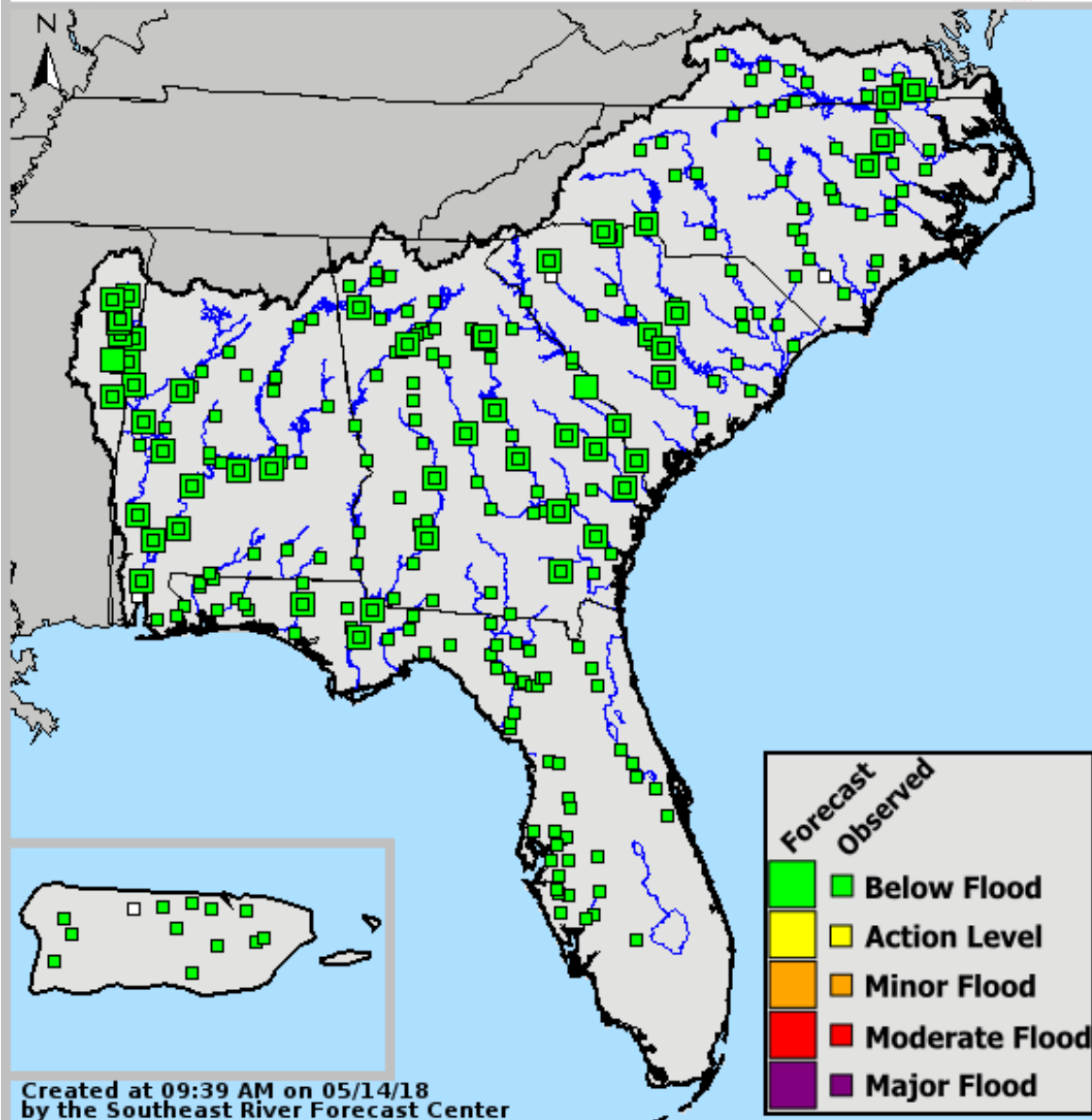






# SERFC River Condition

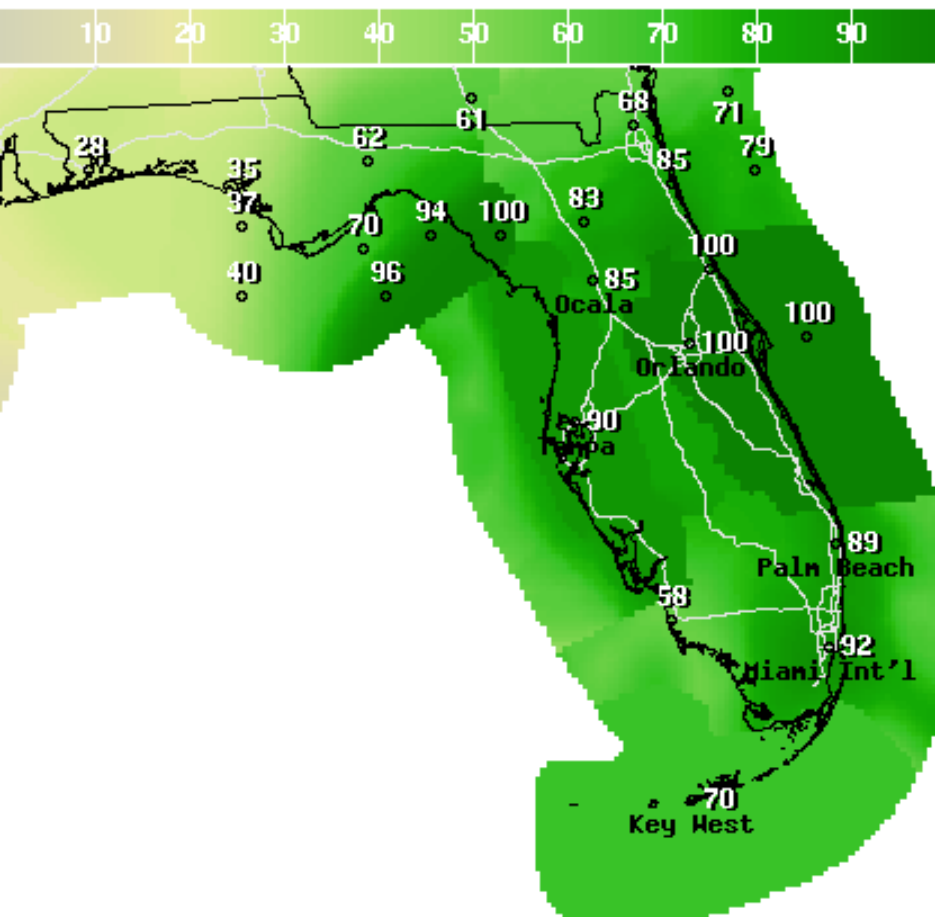
Valid: 05/14/2018 @ 09:39 AM



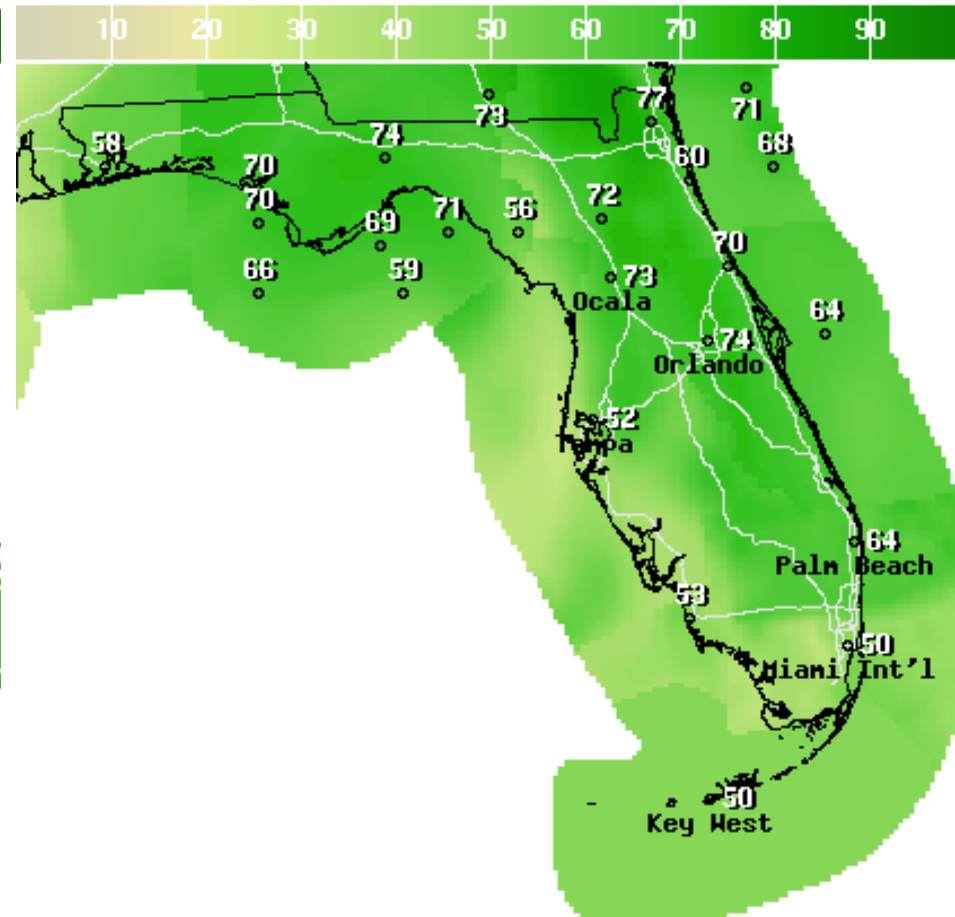
Due to a lack of recent rainfall, all Florida rivers are well below flood stage. Based on forecast rainfall amounts over the next 48 hours, river flooding is not expected.

However, minor flooding of urban and low lying areas will be possible during heavy thunderstorms as rainfall rates may exceed 2" per hour. Water levels should quickly fall after rainfall ends.

# Chance of Rain on Today (Left) and Tomorrow (Right)



12Hr Prob.Precip(%) Ending Mon May 14 2018 8PM EDT  
(Tue May 15 2018 00Z)  
National Digital Forecast Database  
12z issuance Graphic created-May 14 8:52AM EDT



12Hr Prob.Precip(%) Ending Tue May 15 2018 8PM EDT  
(Wed May 16 2018 00Z)  
National Digital Forecast Database  
12z issuance Graphic created-May 14 8:52AM EDT



## Severe Weather Outlook Monday, May 14, 2018

An isolated tornado possible today, mainly south of the Interstate 4 corridor and along the Treasure Coast.

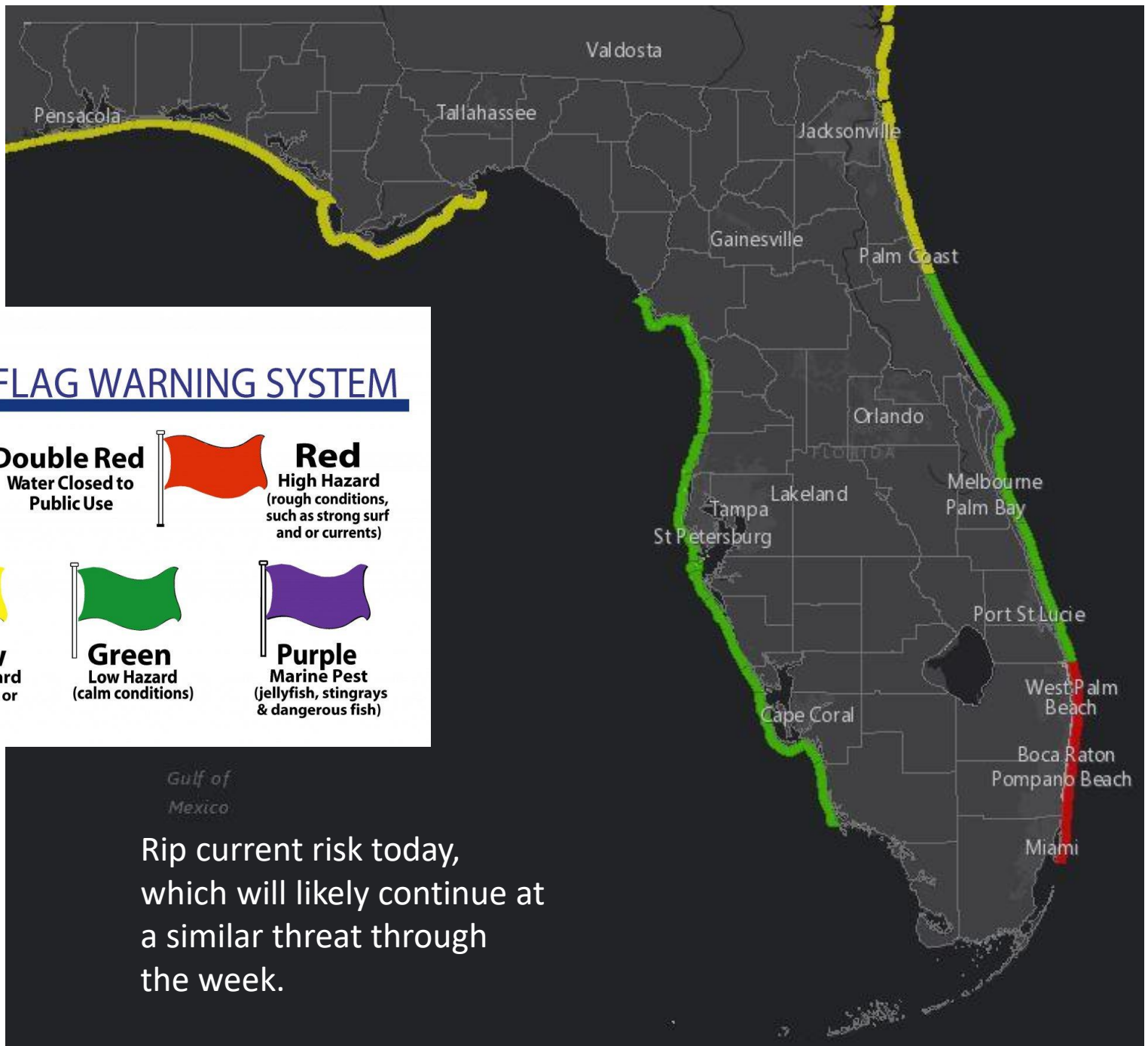


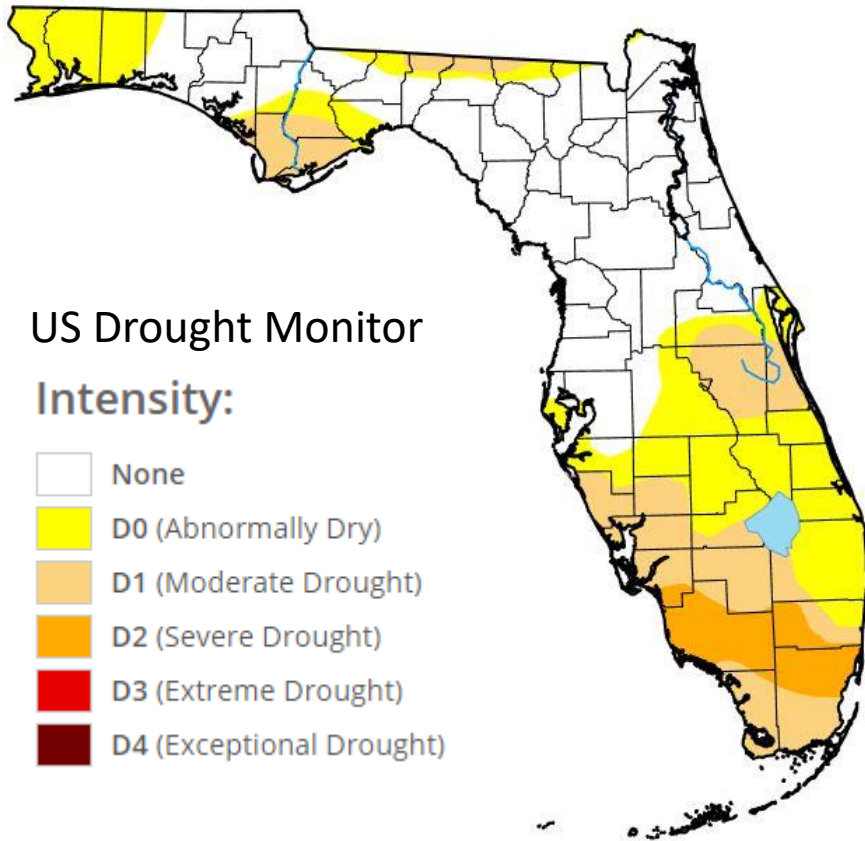
National Weather Service  
Storm Prediction Center

<http://www.spc.noaa.gov>

Pensacola  
Destin  
Panama City  
Tallahassee  
Gainesville  
Orlando  
Tampa  
Sarasota  
Ft. Myers  
Naples  
Key West  
Jacksonville  
Palm Coast  
Daytona Beach  
Cape Canaveral  
Melbourne  
Ft. Pierce  
West Palm Beach  
Ft. Lauderdale  
Miami  
Marathon

5	High
4	Moderate
3	Enhanced
2	Slight
1	Marginal
	Thunder





Moderate to severe drought conditions are present across parts of the state. In addition, numerous wildfires are ongoing. Any rainfall this week will be beneficial as some locations in the Peninsula are still 6-8" below normal for this time of year.



# Summary

- A non-tropical area of low pressure has developed in the eastern Gulf of Mexico. It may acquire some tropical characteristics over the next couple of days as it meanders in the northeastern Gulf.
- Wind shear is high, water temperatures are marginal, and dry air is nearby. These factors will all limit development.
- The National Hurricane Center currently has the odds of develop at 30% (low) during the next 48 hours, and 40% (medium) during the next 5 days.
- Computer models have not been run on this disturbance as it is not designated as an invest area. This will remain the case unless development chances increase.

## Florida Outlook:

- With the low pressure system meandering in the northeastern Gulf of Mexico, high rain chances are expected to continue across the state through the middle of the week.
- Rain totals each day will generally be 1-2". However, locally higher amounts of 3-4" are possible, particularly along the East Coast today and tomorrow and the Panhandle on Wednesday. 5 day rainfall totals upwards of 8" will be possible.
- With ongoing drought conditions and low levels on area rivers and streams, widespread river or flash flooding is not a concern. However, minor flooding in urban and low-lying areas may occur during heavy thunderstorms.
- An isolated tornado will be possible in the Peninsula today. In general, widespread severe weather is not expected.
- With breezy onshore winds and a moderate swell, the rip current risk at most Atlantic and Panhandle beaches will be **moderate to high** through this week.

Another briefing packet will be issued this afternoon with the next update from the National Hurricane Center. For the latest information on the tropics, please visit the National Hurricane Center website at [www.hurricanes.gov](http://www.hurricanes.gov)



# TROPICAL UPDATE

Created by:

Michael Spagnolo, Deputy State Meteorologist  
[Michael.spagnolo@em.myflorida.com](mailto:Michael.spagnolo@em.myflorida.com)

State Meteorological Support Unit  
Florida Division of Emergency  
Management

Users wishing to subscribe (approval pending) to this distribution list, register at [https://public.govdelivery.com/accounts/FLDEM/subscriber/new?topic\\_id=SERT\\_Met\\_Tropics](https://public.govdelivery.com/accounts/FLDEM/subscriber/new?topic_id=SERT_Met_Tropics).

Other reports available for subscription are available at <https://public.govdelivery.com/accounts/FLDEM/subscriber/new?preferences=true>