



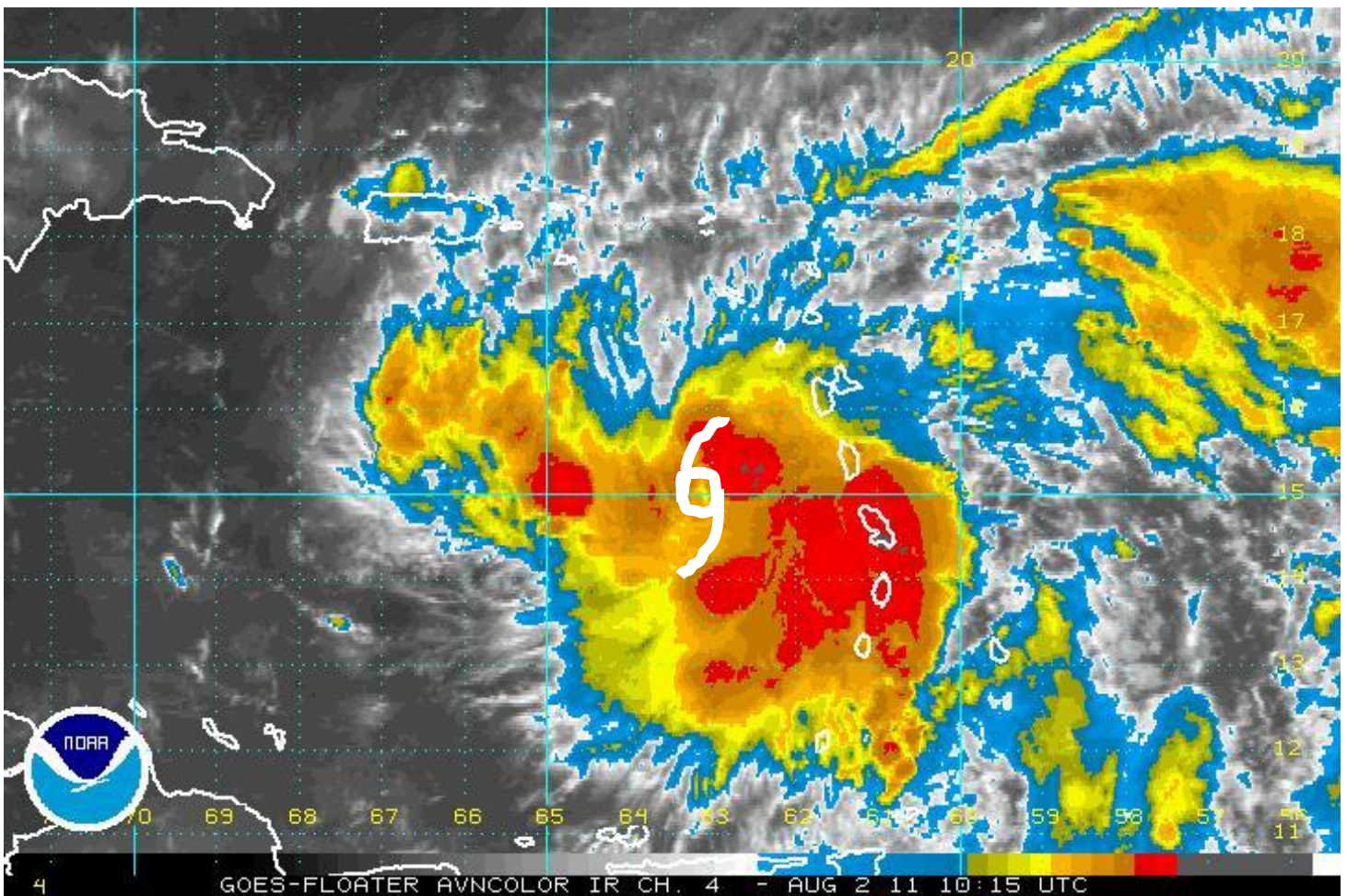
National Weather Service Tallahassee, Florida



In this update:

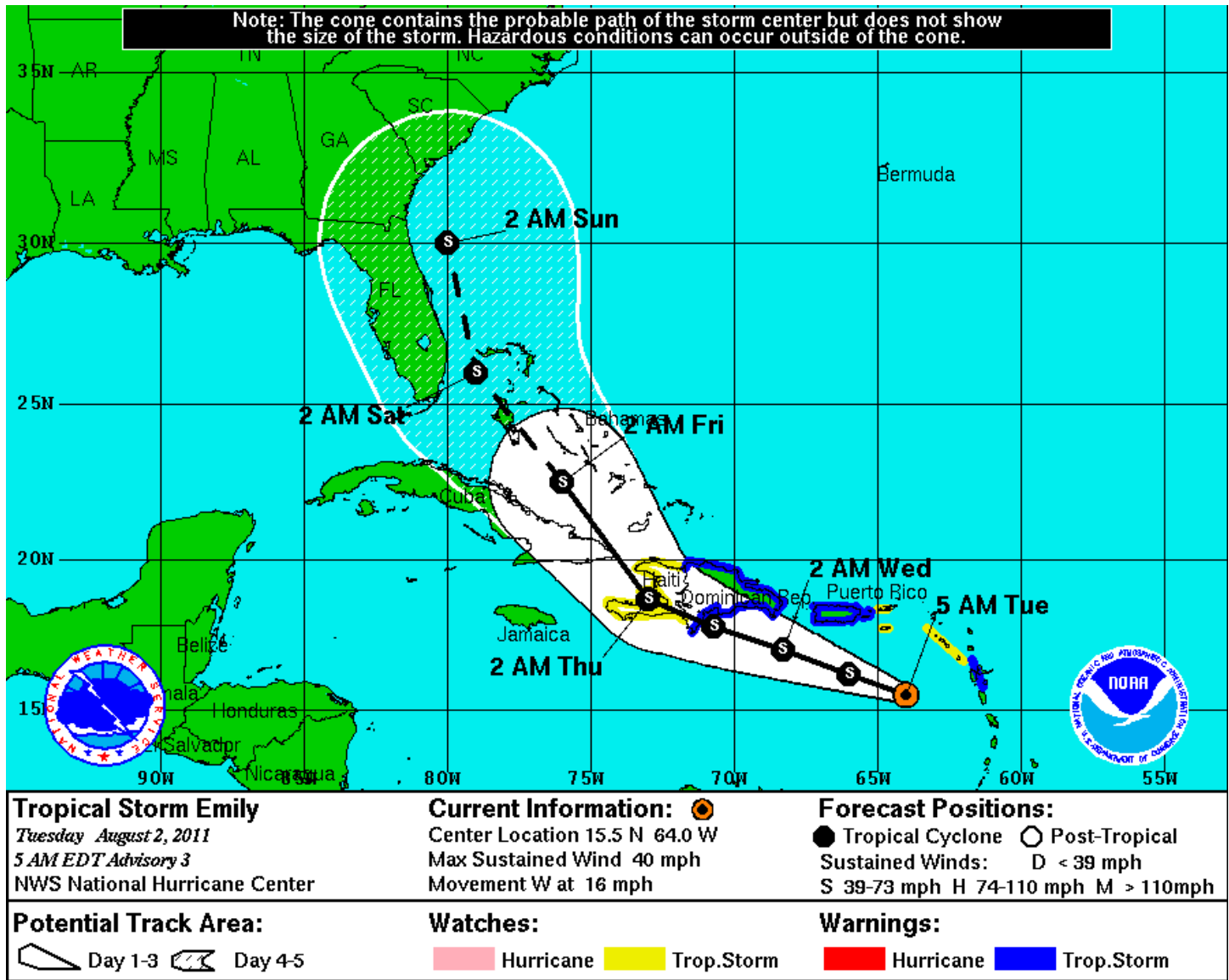
- The Latest on Tropical Storm Emily – Tuesday AM

Overview:



As of 8 am ET this morning, Tropical Storm Emily had maximum sustained winds of 40 mph and was located about 265 miles Southeast of San Juan, Puerto Rico. This is also about 1300 miles Southeast of Miami, Florida. As you can see from the satellite image, Emily is still rather disorganized, but gradually with time, Emily is predicted to become better organized while moving toward the West Northwest.

Track:



The latest track from the National Hurricane Center is shown above. Note that portions of our region, mainly from Tallahassee to Albany and areas to the east are included in the forecast cone. There remains considerable uncertainty about the longer ranges of the forecast. Some computer models strengthen a ridge of high pressure off the U.S. East coast on Friday, resulting in a more westward track, either toward South Florida or the Southeast Gulf of Mexico. Other models keep this ridge weak, allowing Emily to gain more latitude and move east of the Florida Peninsula.

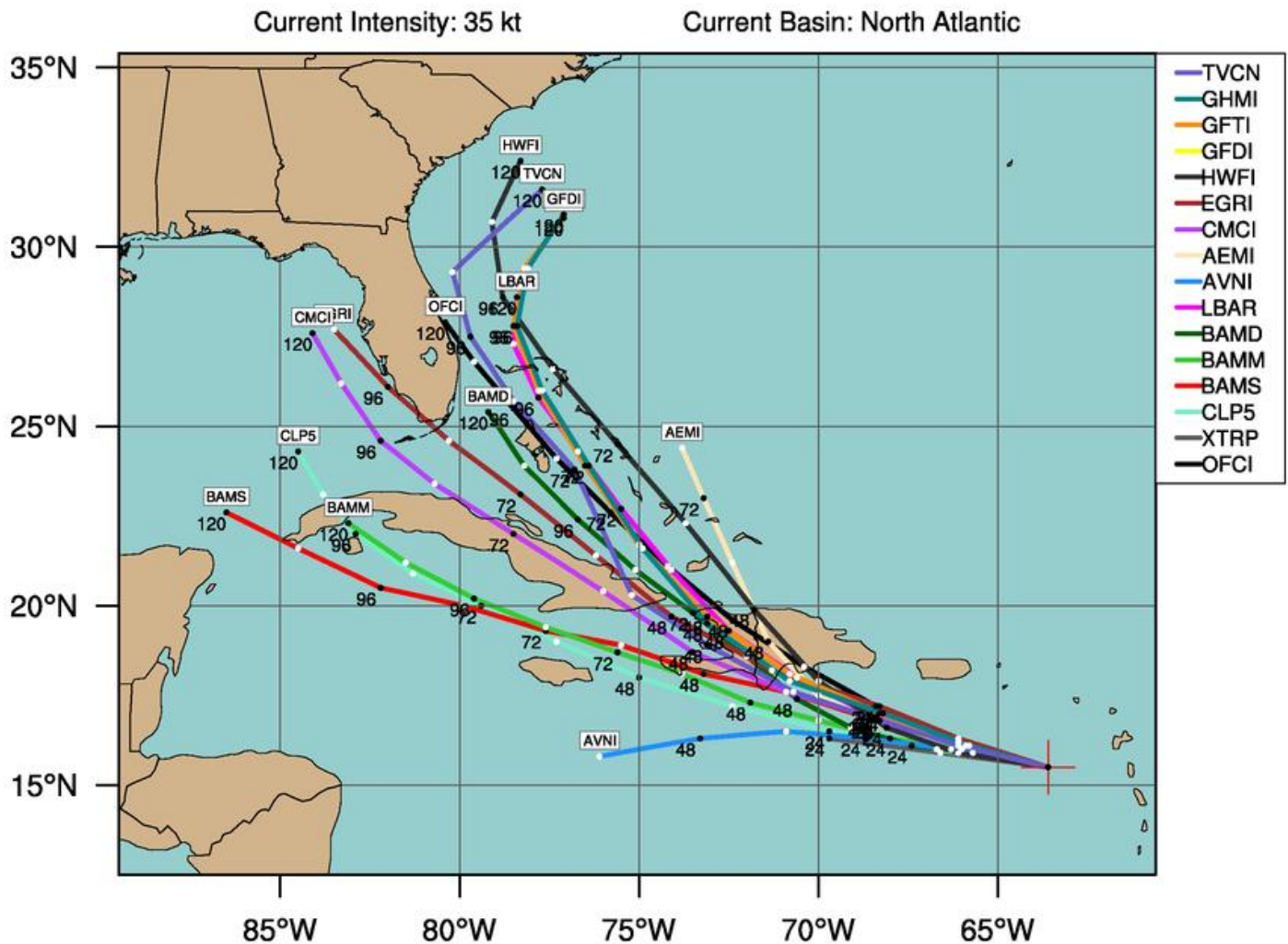
One other potential issue is Emily's interaction with the mountainous terrain of Hispaniola. If the center of the storm tracks near or over the high mountain peaks of the island, significant

disruption to the storm could occur, possibly resulting in dissipation or a very weak storm moving through the Bahamas.

Due to higher than normal track and intensity uncertainties, all interests across the Southeast, particularly in Florida and Southern Georgia, should keep a close eye on Emily throughout the week.

TROPICAL STORM EMILY (AL05)

Early-cycle track guidance valid 0600 UTC, 02 August 2011



This plot does not display official storm information. Use for information purposes only.
DO NOT USE FOR LIFE AND DEATH DECISIONS!

Summary:

** Tropical Storm Emily has formed across the far Western Caribbean Sea

** While the storm is still at least five days away, interests over South Georgia and Florida need to closely watch the progress of Emily during the week.

** The forecast, both with respect to the track and intensity is highly uncertain due to a variety of factors.

** Another update will be provided later this afternoon on Emily, if significant changes occur to the forecast track.

If you have any questions, please give our office a call at 850-942-8833 or on our toll free line at 800-598-4562 and ask to speak to a meteorologist. We are available 24 hours a day, 7 days a week. You can also reach us on our Southern Linc phone at 1*77*284.