



TROPICAL UPDATE

10 AM EDT

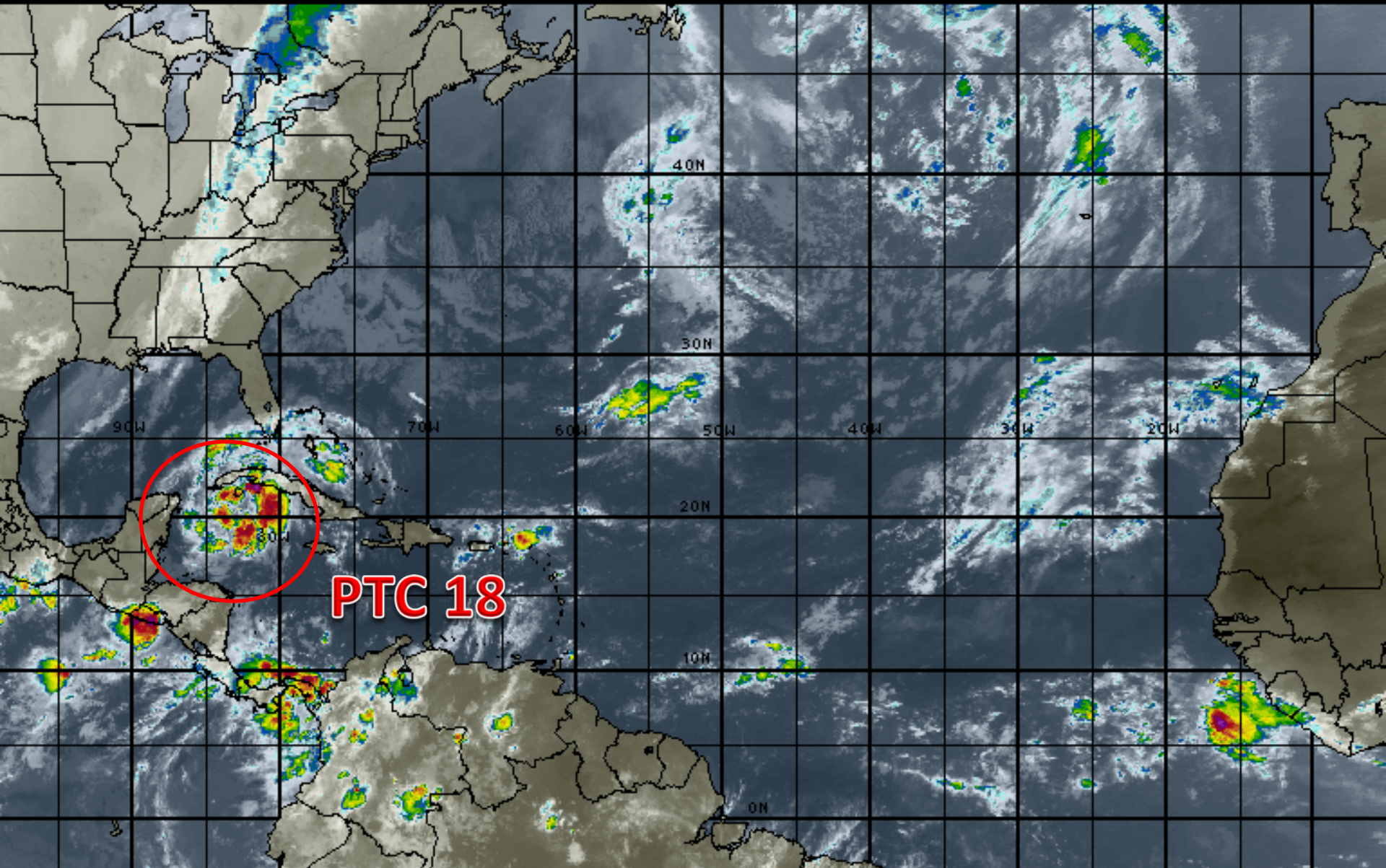
Saturday, October 28, 2017

Potential Tropical Cyclone 18 (90%)

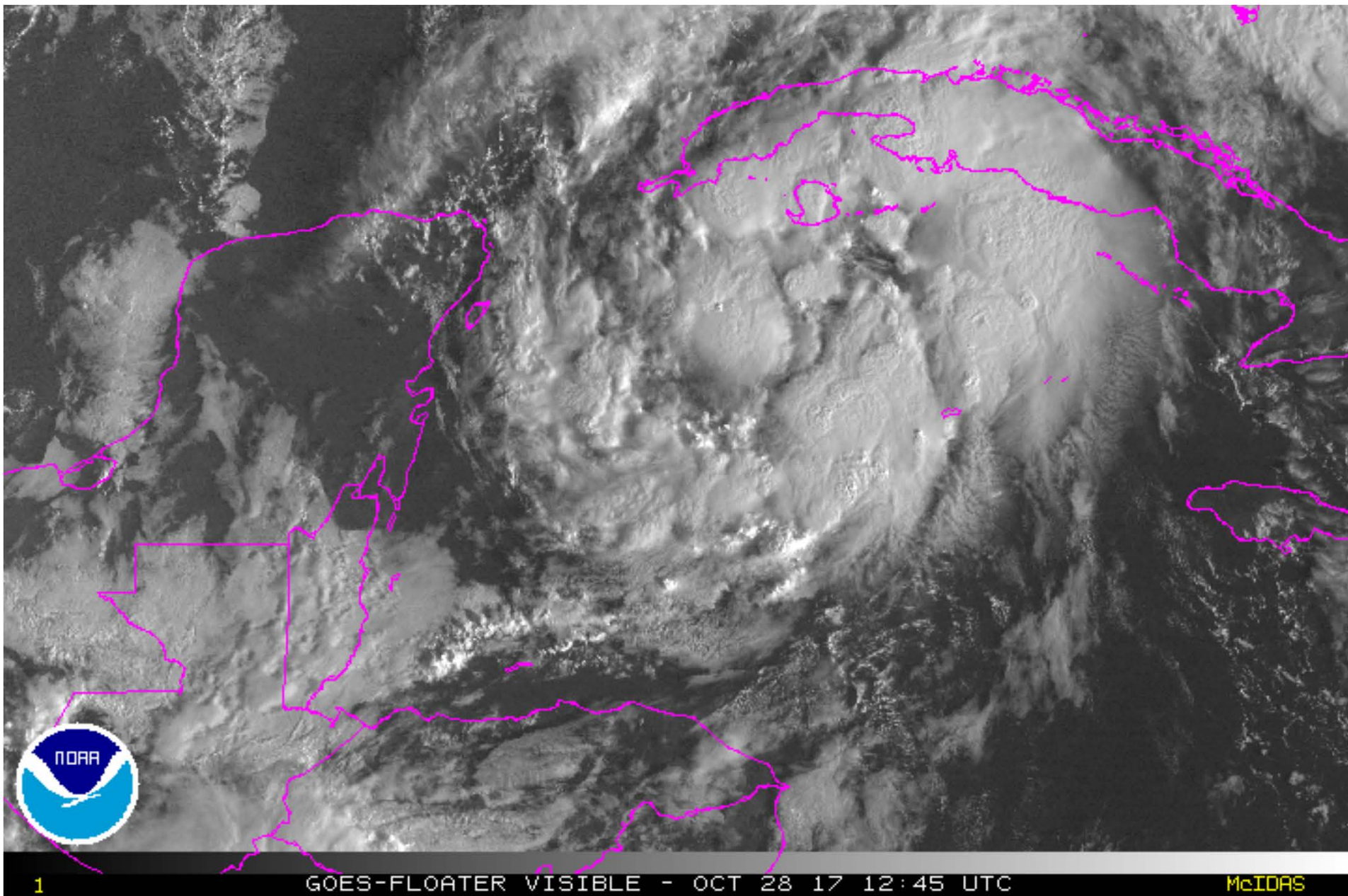
This update is intended for government and emergency response officials, and is provided for informational and situational awareness purposes only. Forecast conditions are subject to change based on a variety of environmental factors. For additional information, or for any life safety concerns with an active weather event please contact your County Emergency Management or Public Safety Office, local National Weather Service forecast office or visit the National Hurricane Center website at www.nhc.noaa.gov.

Atlantic Basin Satellite Image

12:00 28-OCT-2017 GMT Copyright © 1998-2017 MSI Corporation <http://www.usi.com>

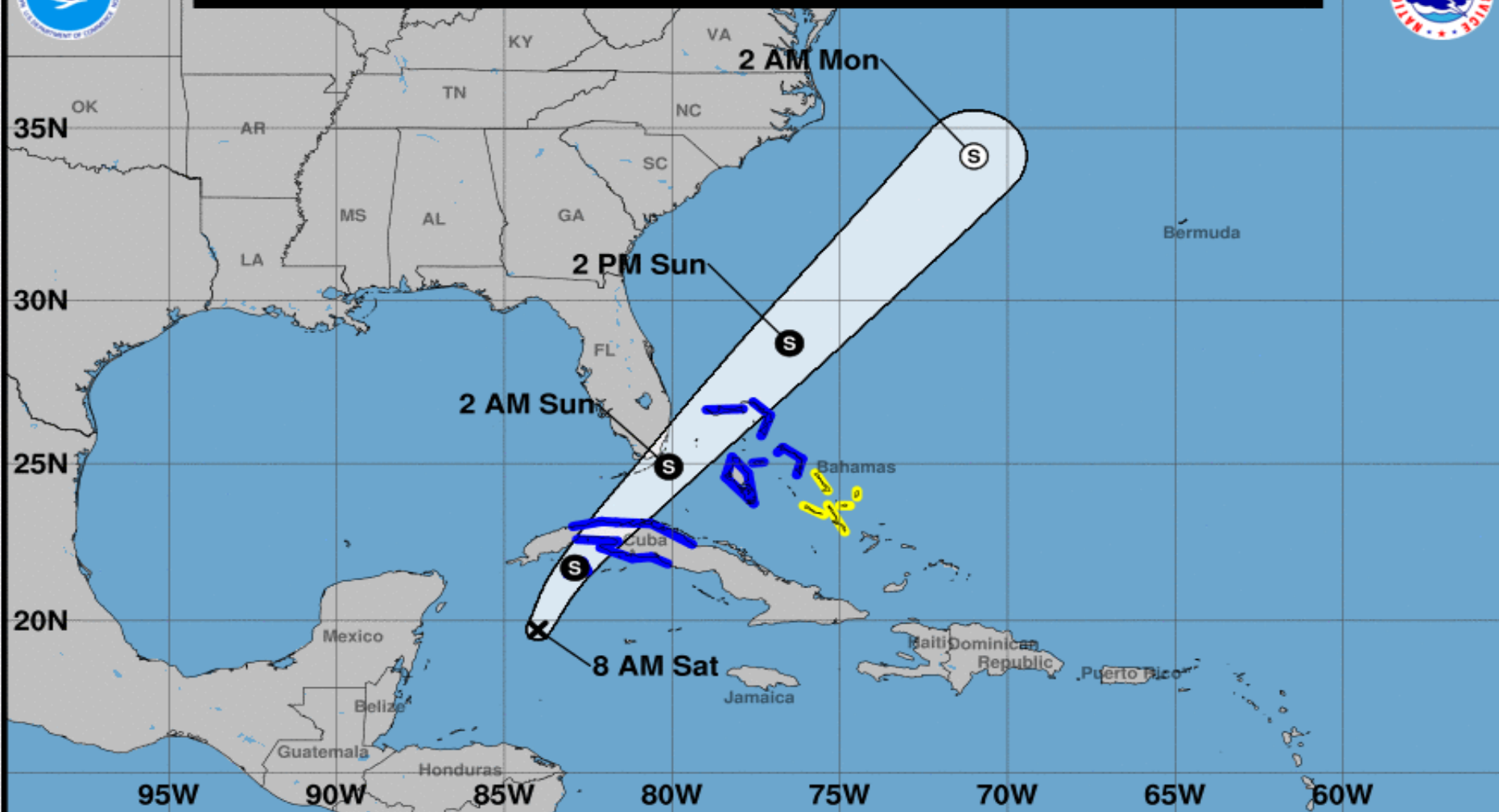


PTC 18 Satellite Image





Note: The cone contains the probable path of the storm center but does not show the size of the storm. Hazardous conditions can occur outside of the cone.



Potential Tropical Cyclone Eighteen
Saturday October 28, 2017
8 AM EDT Intermediate Advisory 3A
NWS National Hurricane Center

Current information: x
Center location 19.7 N 84.0 W
Maximum sustained wind 35 mph
Movement NNE at 10 mph

Forecast positions:
● Tropical Cyclone ○ Post/Potential TC
Sustained winds: D < 39 mph
S 39-73 mph H 74-110 mph M > 110 mph

Potential track area:

Day 1-3 Day 4-5

Watches:

Hurricane Trop Stm

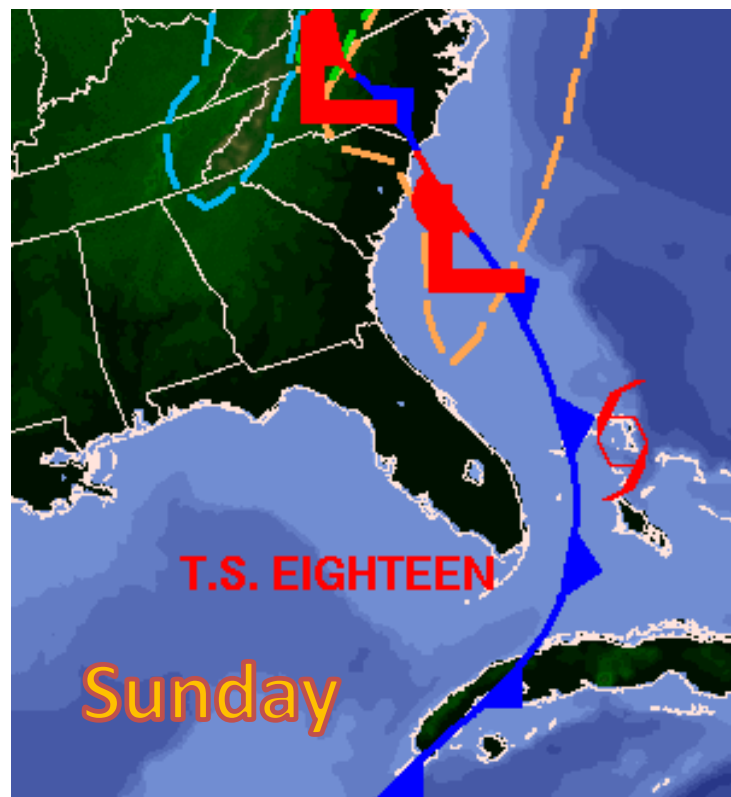
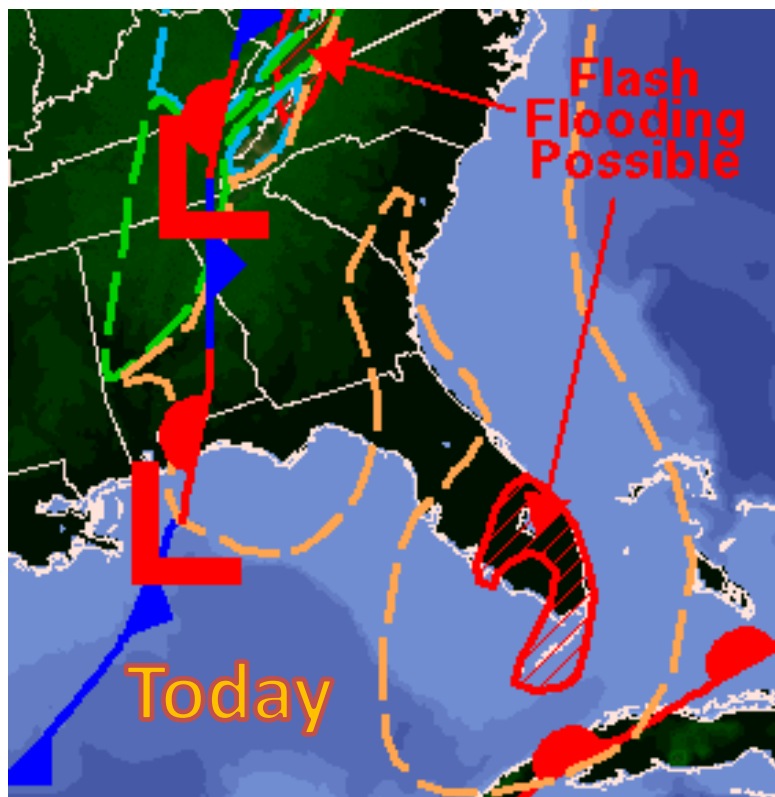
Warnings:

Hurricane Trop Stm

Current wind extent:

Hurricane Trop Stm

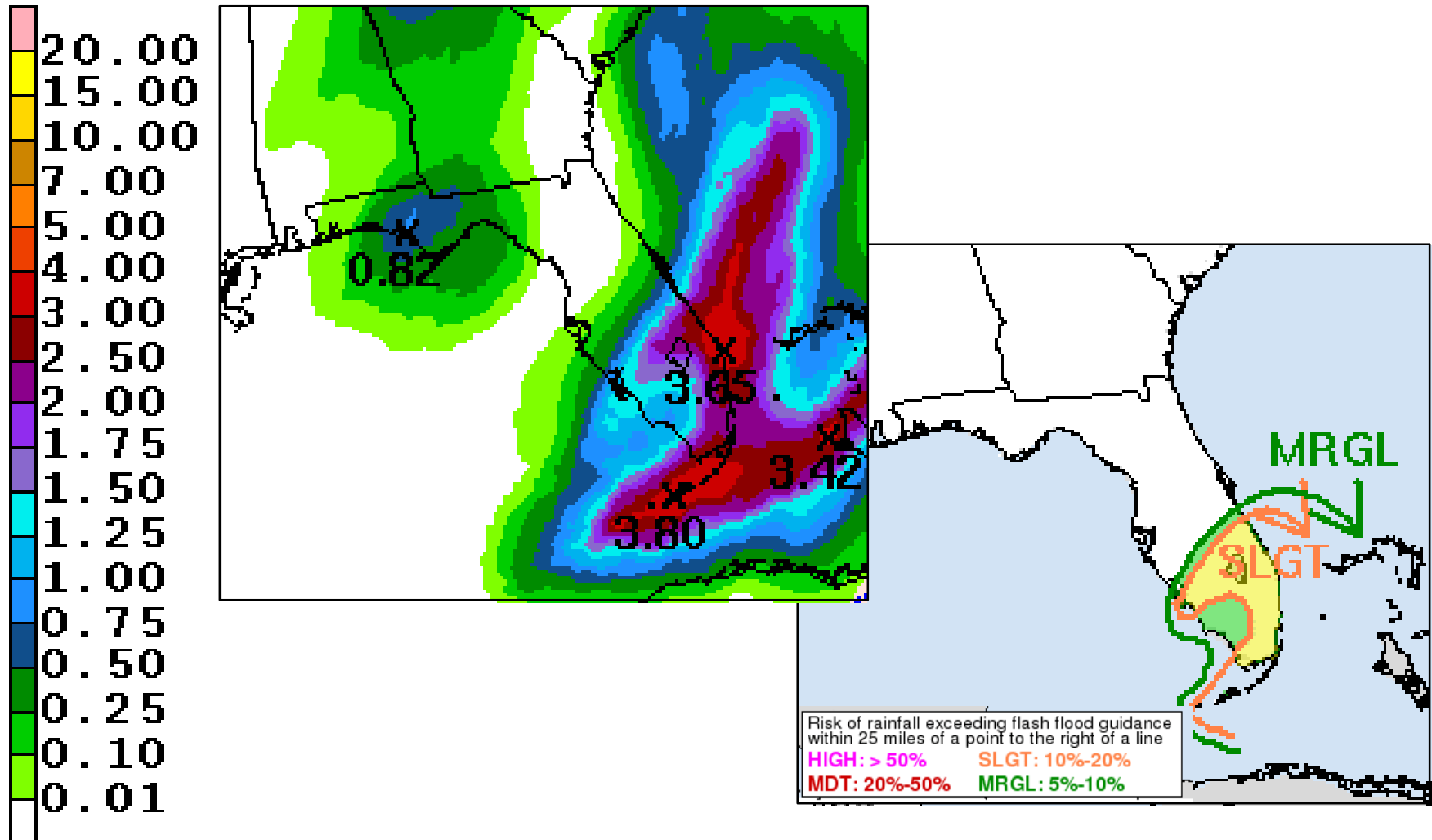
Weather Maps for This Weekend



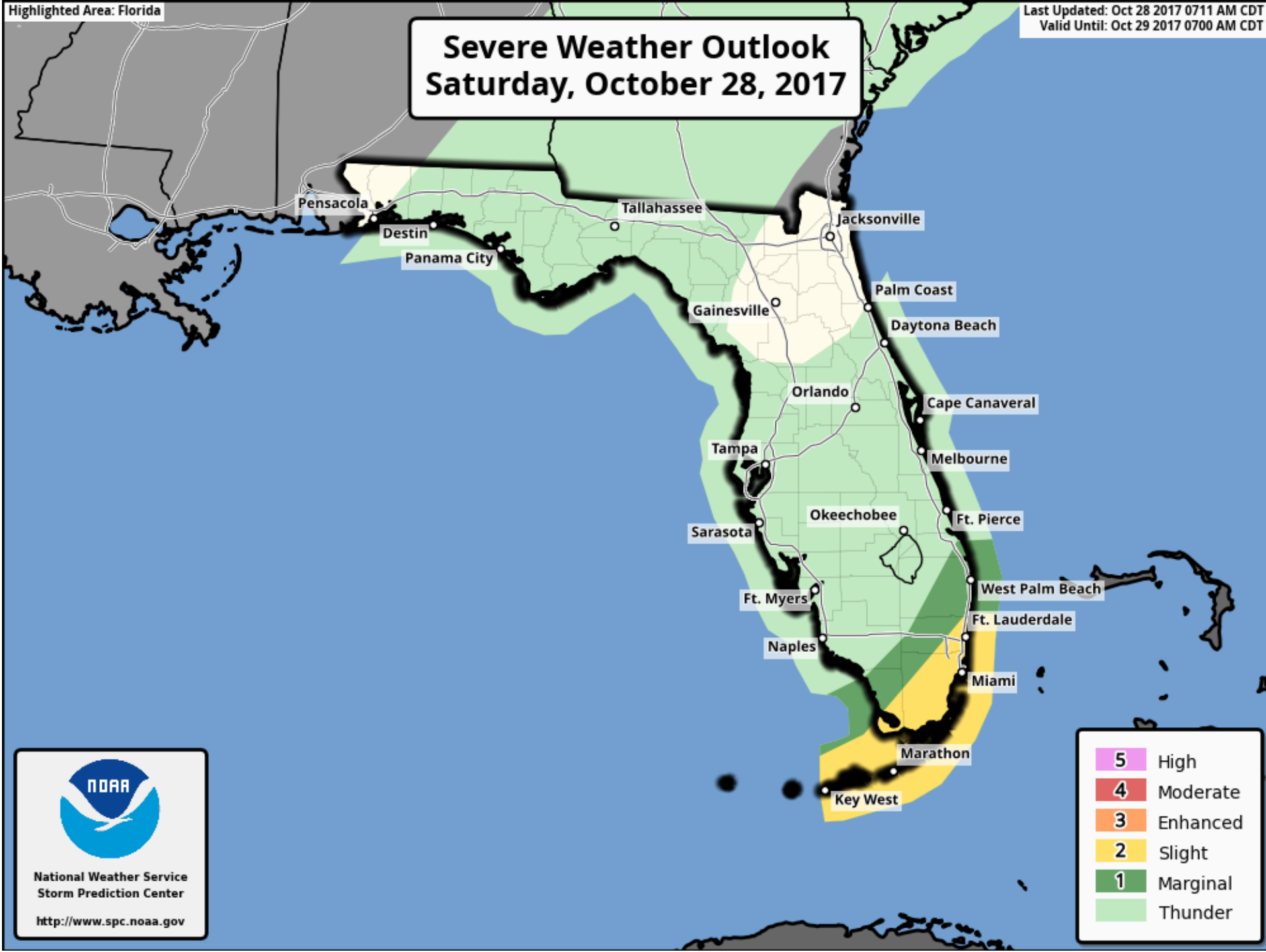
- PTC 18 is expected to become a tropical storm today while over the Caribbean Sea.
- However, its chances for development will decrease as it moves closer to Florida and begins interacting with the cold front moving through the state today and tomorrow.

Forecast Rainfall Totals & Flooding Risk Today

Today, the cold front and PTC 18 will enhance rainfall chances across most of the state. Below are forecast rainfall totals through tomorrow morning; locally higher amounts are possible. There is some potential for localized minor flooding as well, primarily south of Lake Okeechobee.



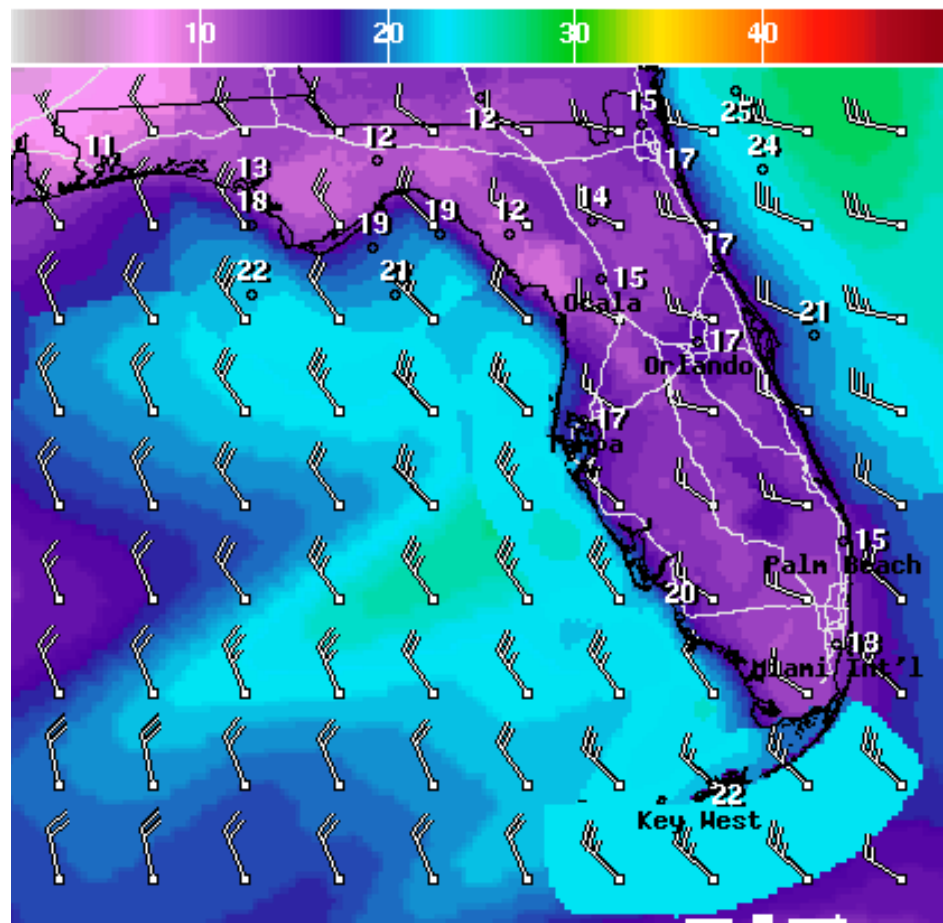
Severe Weather Outlook Saturday, October 28, 2017



National Weather Service
Storm Prediction Center

<http://www.spc.noaa.gov>

Wind Speeds and Gusts on Sunday



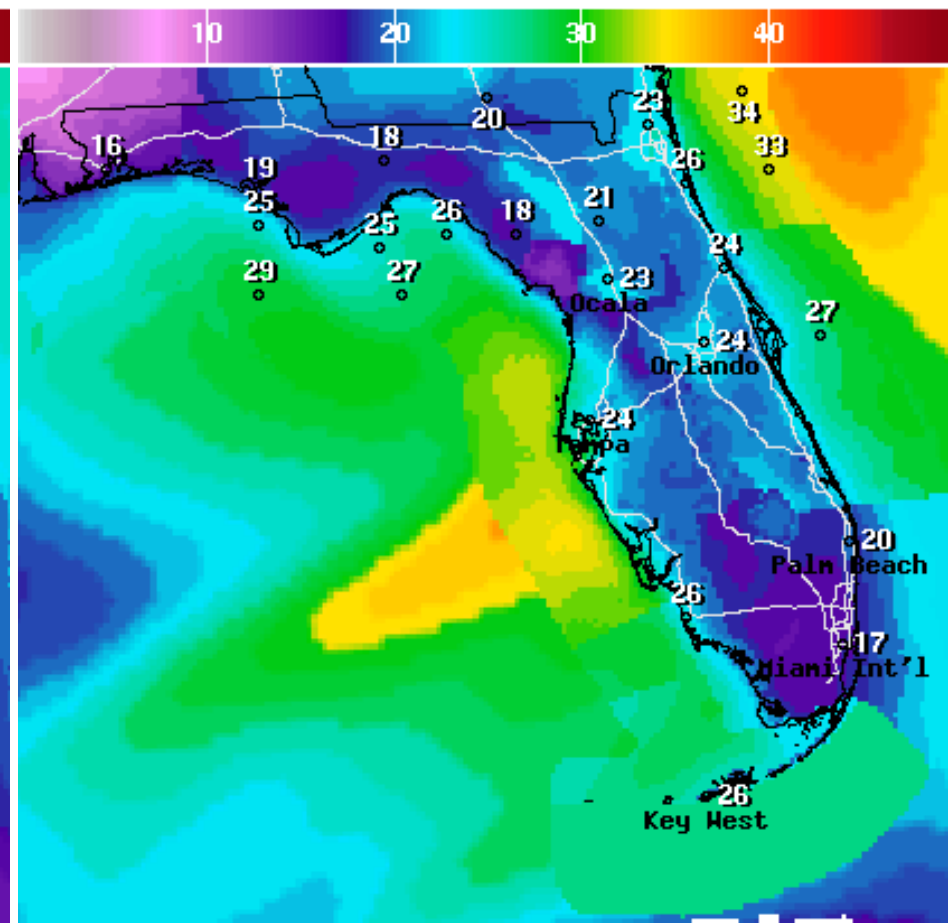
WindSpd(Kts) & WindDir For Sun Oct 29 2017 2PM EDT
(Sun Oct 29 2017 18Z)



National Digital Forecast Database

13z issuance

Graphic created-Oct 28 9:33AM EDT



Wind Gust(Kts) Sun Oct 29 2017 2PM EDT
(Sun Oct 29 2017 18Z)



National Digital Forecast Database

13z issuance

Graphic created-Oct 28 9:36AM EDT



Summary:

- Invest 93L became Potential Tropical Cyclone 18 at 5pm EDT yesterday. The system has tropical storm force winds, but continues to lack a well-defined center of circulation.
- At 8am EDT this morning, PTC 18 was located about 250 miles south-southwest of Havana, Cuba, or about 360 miles south-southwest of Key West, and was moving north-northeast at 10 mph. Maximum sustained winds are near 35 mph with higher gusts.
- The National Hurricane Center expects it to become a tropical storm today while over the Caribbean Sea and before it reaches Cuba. An Air Force Reserve reconnaissance aircraft is currently investigating the system to assess its strength.
- On the NHC forecast track, PTC 18 would move across western Cuba this afternoon, the Florida Straits tonight, and the northwestern Bahamas tomorrow morning.
- The next name on the 2017 Atlantic storm list is Philippe (fee-LEEP).

Florida Outlook:

- Regardless of its development, impacts to Florida are likely to be the same.
- Rainfall totals through tomorrow morning across the Keys and much of South Florida will generally be 2-4" with locally higher amounts of 6" possible. These amounts could cause some localized minor nuisance flooding, especially in urban and low-lying areas.
- A **Flood Watch** has been issued for Indian River, Martin, Okeechobee, and St. Lucie counties.
- Severe thunderstorms could produce a couple brief, isolated tornadoes and damaging winds in Southeast Florida and the Keys this afternoon and evening.
- At this time, sustained tropical storm force winds are expected to remain southeast of the Keys and South Florida. As a result, there are no tropical storm warnings in effect for Florida.
- However, on Sunday, in the wake of the cold front, winds of 20-25 mph, with gusts up to 30 mph, are expected in the Keys. Gusts between 20-25 mph are possible in the Peninsula.

Another briefing packet will be issued this afternoon. For more information, visit the NHC website at www.hurricanes.gov.



TROPICAL UPDATE

Created by:

William Watson, Assistant State Meteorologist
william.watson@em.myflorida.com

State Meteorological Support Unit

Florida Division of Emergency Management

Users wishing to subscribe (approval pending) to this distribution list, please register at:
https://public.govdelivery.com/accounts/FLDEM/subscriber/new?topic_id=SERT_Met_Tropics.

Other reports available for subscription are available at:

<https://public.govdelivery.com/accounts/FLDEM/subscriber/new?preferences=true>