



TROPICAL UPDATE

10 AM EDT

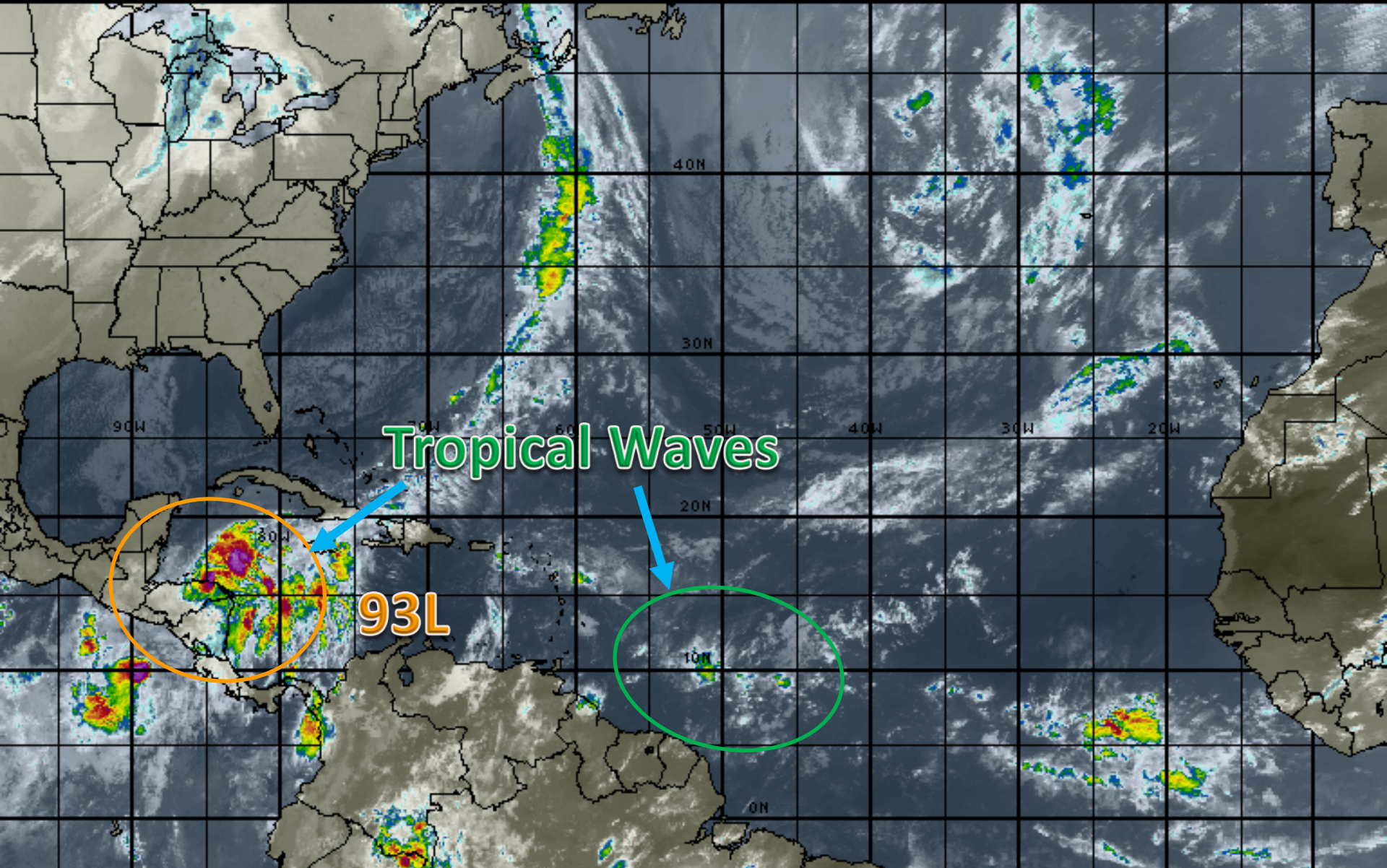
Friday, October 27, 2017

Invest Area 93L (60%)

This update is intended for government and emergency response officials, and is provided for informational and situational awareness purposes only. Forecast conditions are subject to change based on a variety of environmental factors. For additional information, or for any life safety concerns with an active weather event please contact your County Emergency Management or Public Safety Office, local National Weather Service forecast office or visit the National Hurricane Center website at www.nhc.noaa.gov.

Atlantic Basin Satellite Image

12:00 27-OCT-2017 GMT Copyright © 1998-2017 MSI Corporation <http://www.usi.com>





Five-Day Graphical Tropical Weather Outlook

National Hurricane Center Miami, Florida



www.hurricanes.gov

Disturbance 1

* Formation chance through 48 hours...**medium**...60 percent.
 * Formation chance through 5 days...**medium**...60 percent.

1
(60%)

8:00 am EDT
Fri Oct 27 2017

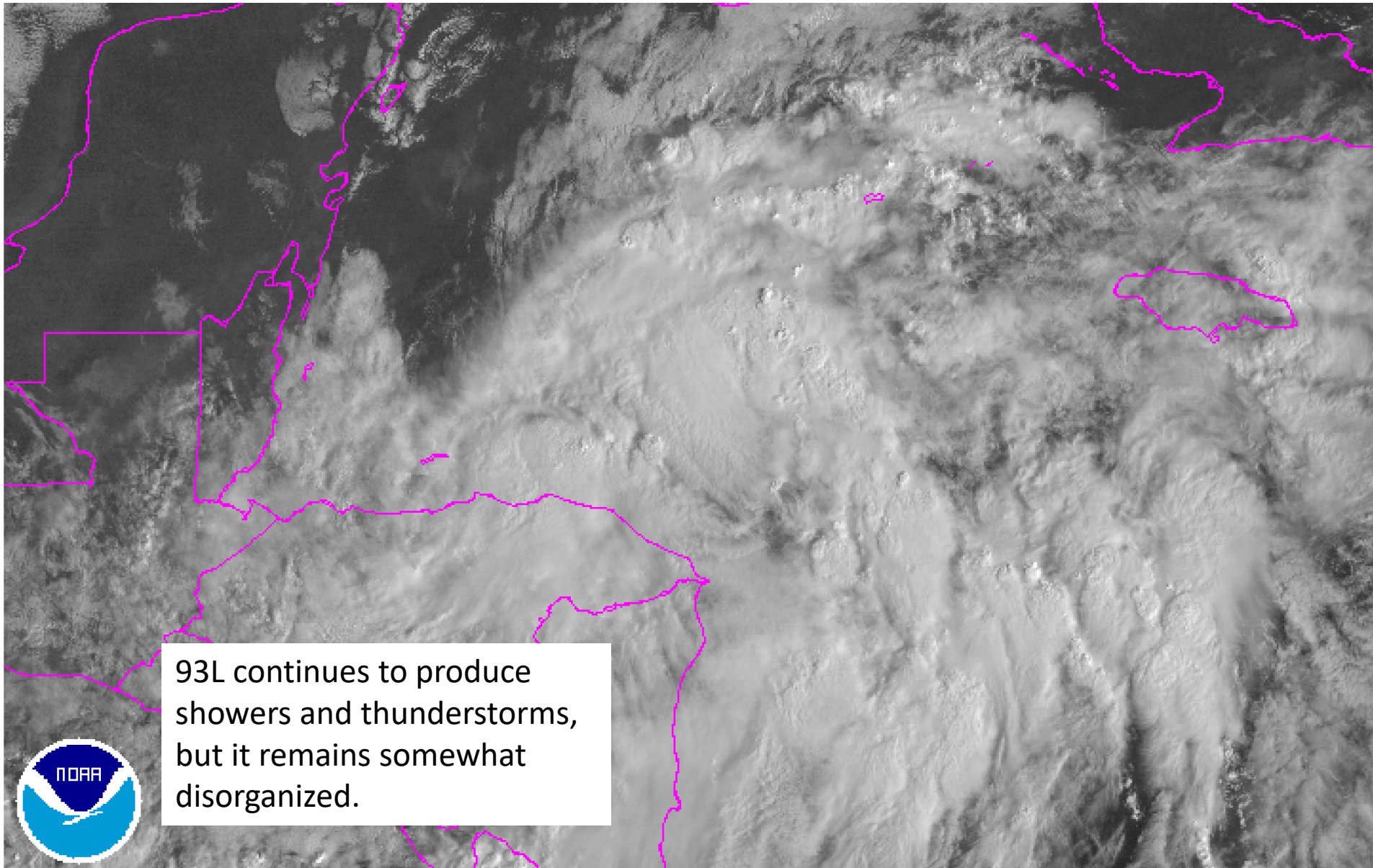
100°W 90°W 80°W 70°W 60°W 50°W 40°W 30°W 20°W

Current Disturbances and Five-Day Cyclone Formation Chance: < 40% 40-60% > 60%

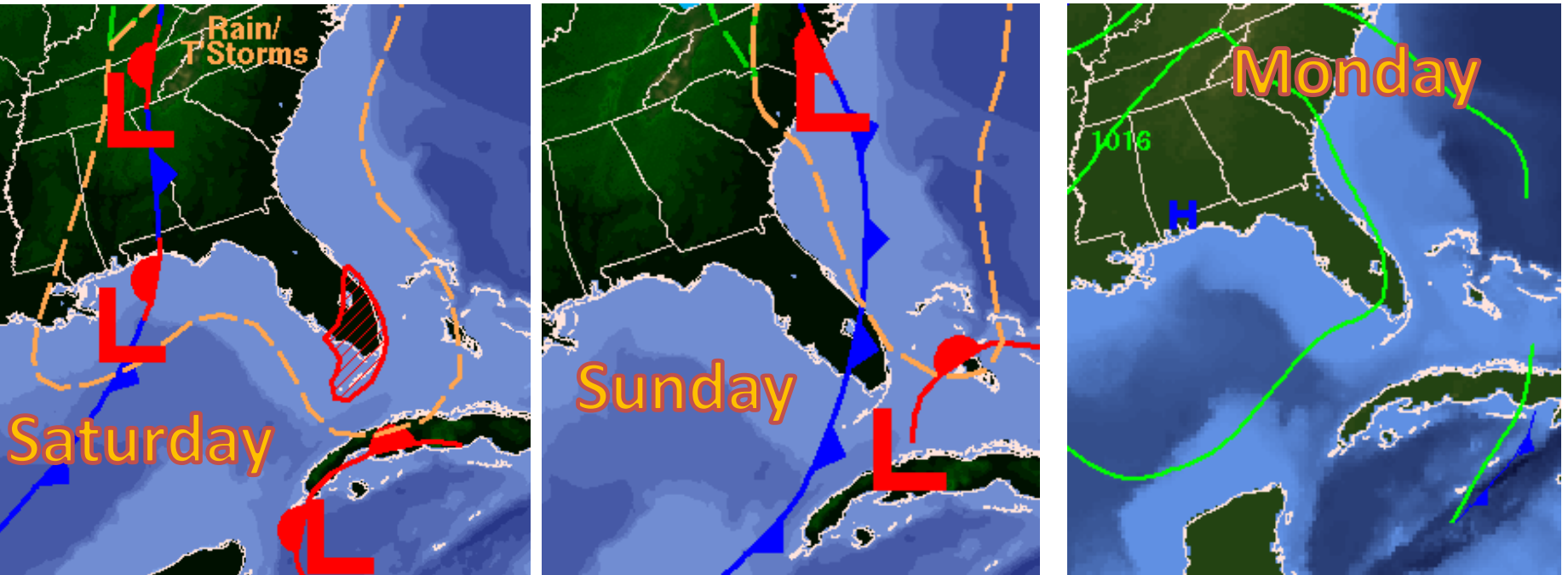
Tropical or Sub-Tropical Cyclone: Depression Storm Hurricane

Post-Tropical Cyclone Remnants

Invest 93L Satellite Image

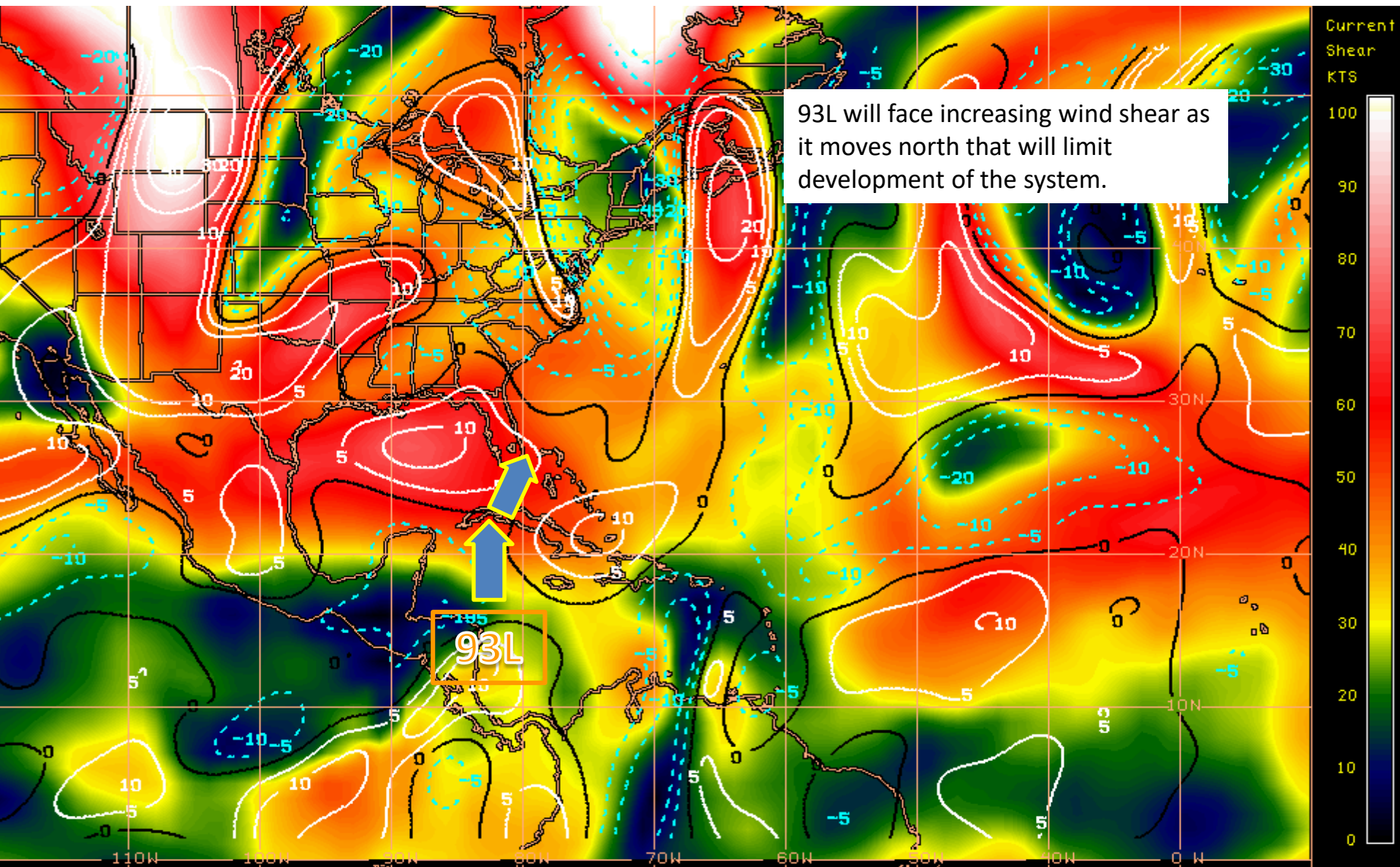


Forecast Weather Maps Through This Weekend



- Decreasing wind shear may allow 93L to organize some today and Saturday.
- However, another cold front is forecast to move through the state this weekend and it will push the system northeast across Cuba and possibly South Florida on Saturday and into Sunday.
- By late Sunday and into Monday, Florida will be dry under the influence of high pressure behind the front.

Current Wind Shear (Shaded) and Shear Tendency (Lines)



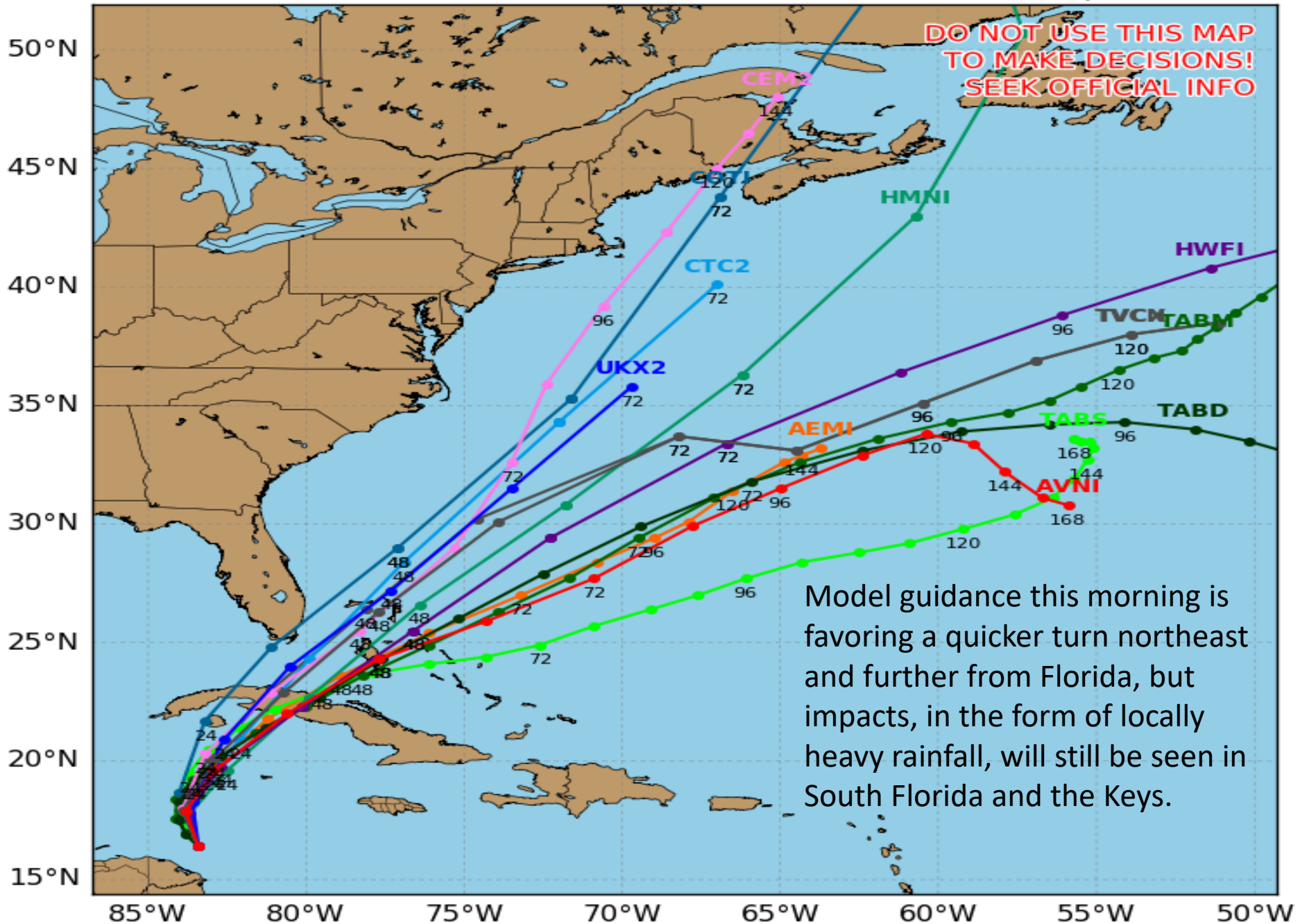
Shear Tendency (KTS) Over Past 24 Hours: Increasing ——— Decreasing - - - -

Invest 93L Model Track Guidance

Initialized at 12z Oct 27 2017

Levi Cowan - tropicaltidbits.com

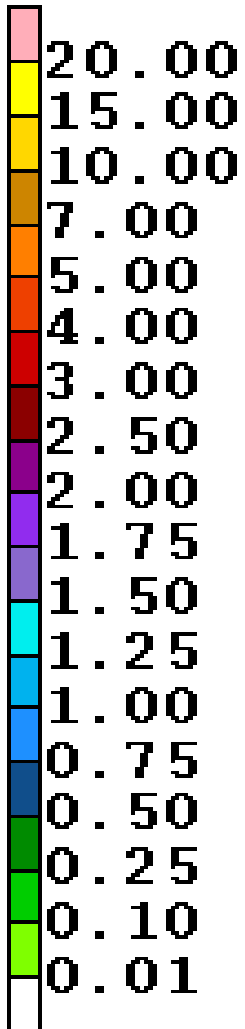
**DO NOT USE THIS MAP
TO MAKE DECISIONS!
SEEK OFFICIAL INFO**



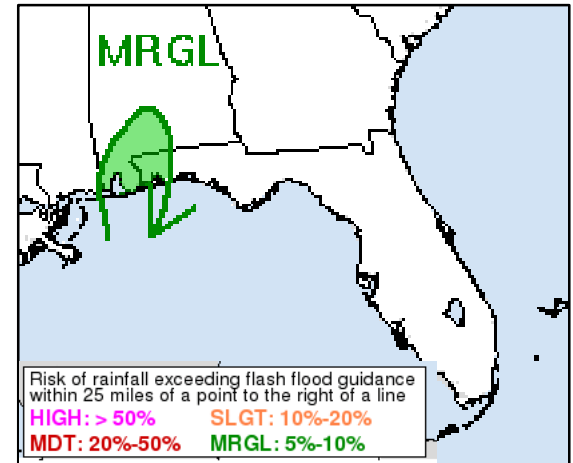
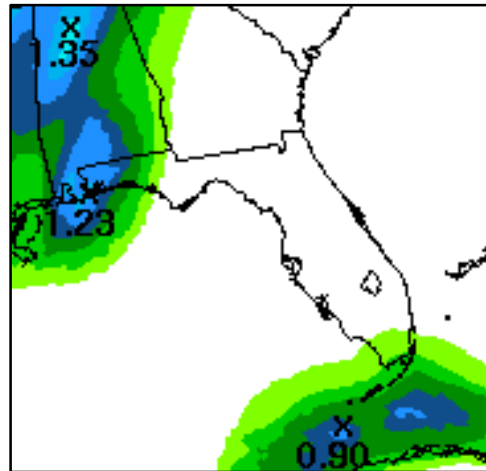
Forecast Rainfall Totals & Flooding Risk

Friday & Saturday

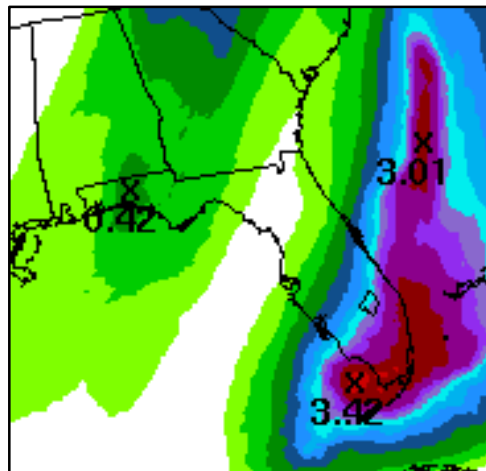
Isolated showers and thunderstorms are possible across the Keys and a cold front will bring scattered showers and thunderstorms to the western Panhandle tonight. On Saturday, the cold front and 93L will enhance rainfall chances across most of the state. Below are forecast rainfall totals for Friday and Saturday. Locally higher amounts are possible.



Friday

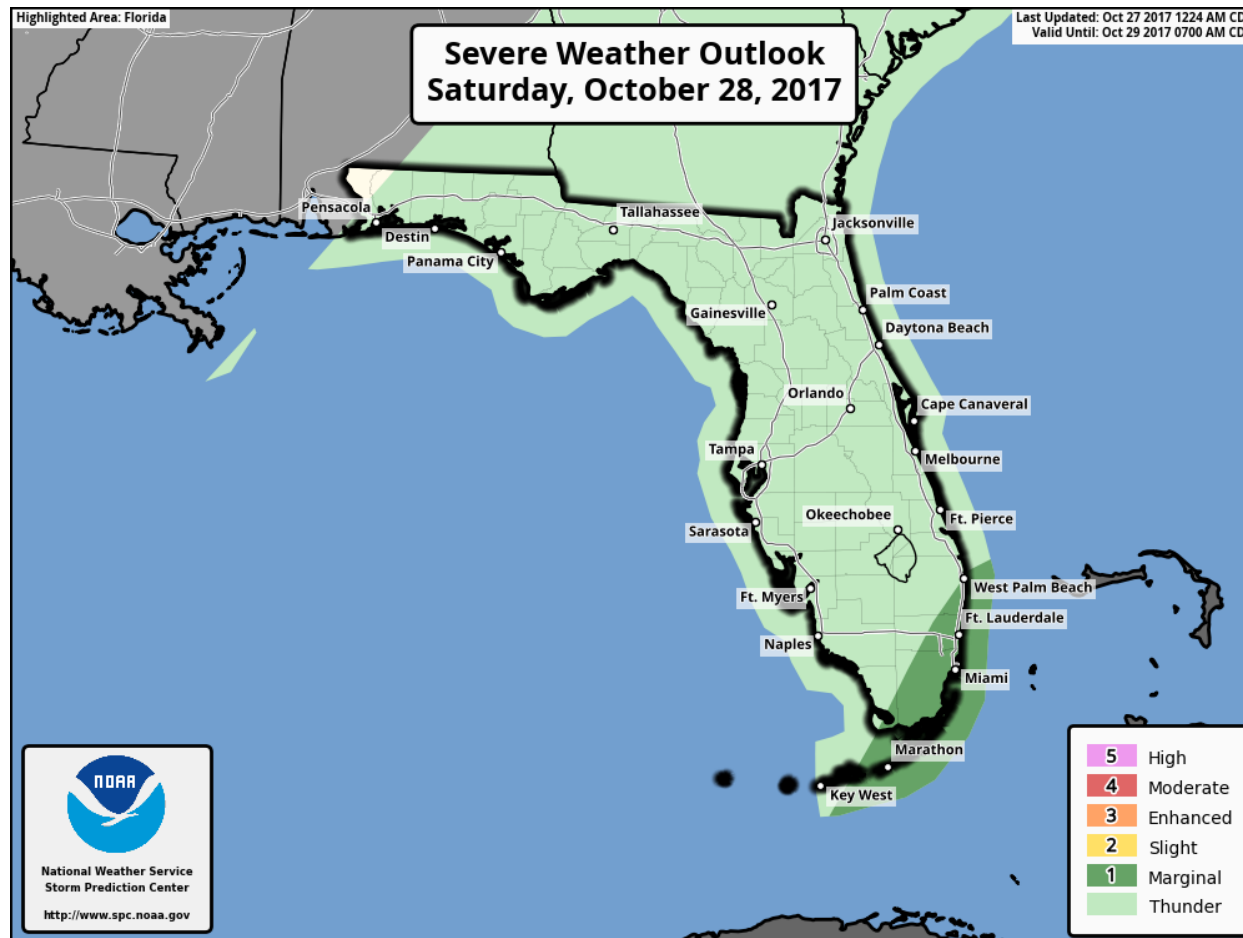


Saturday

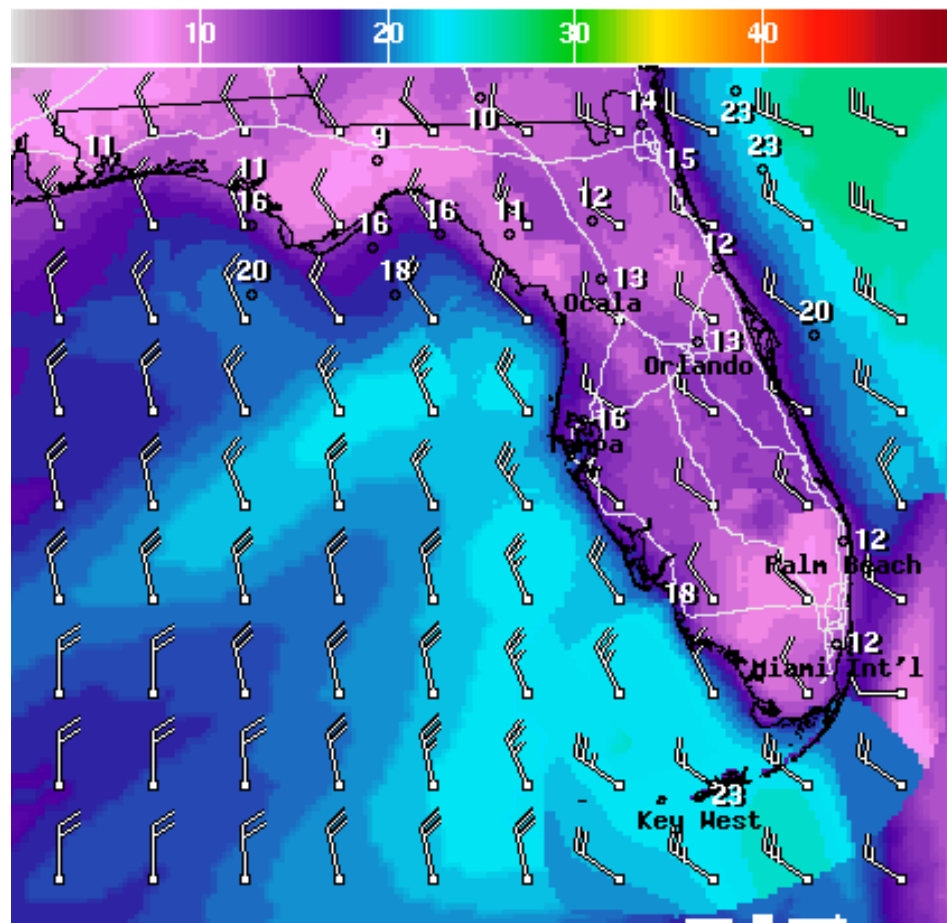


Potential for Severe Weather

Some storms could be strong to marginally severe in South Florida Saturday afternoon and evening. The primary threats will be brief, isolated tornadoes and damaging winds.



Wind Speeds and Gusts on Sunday

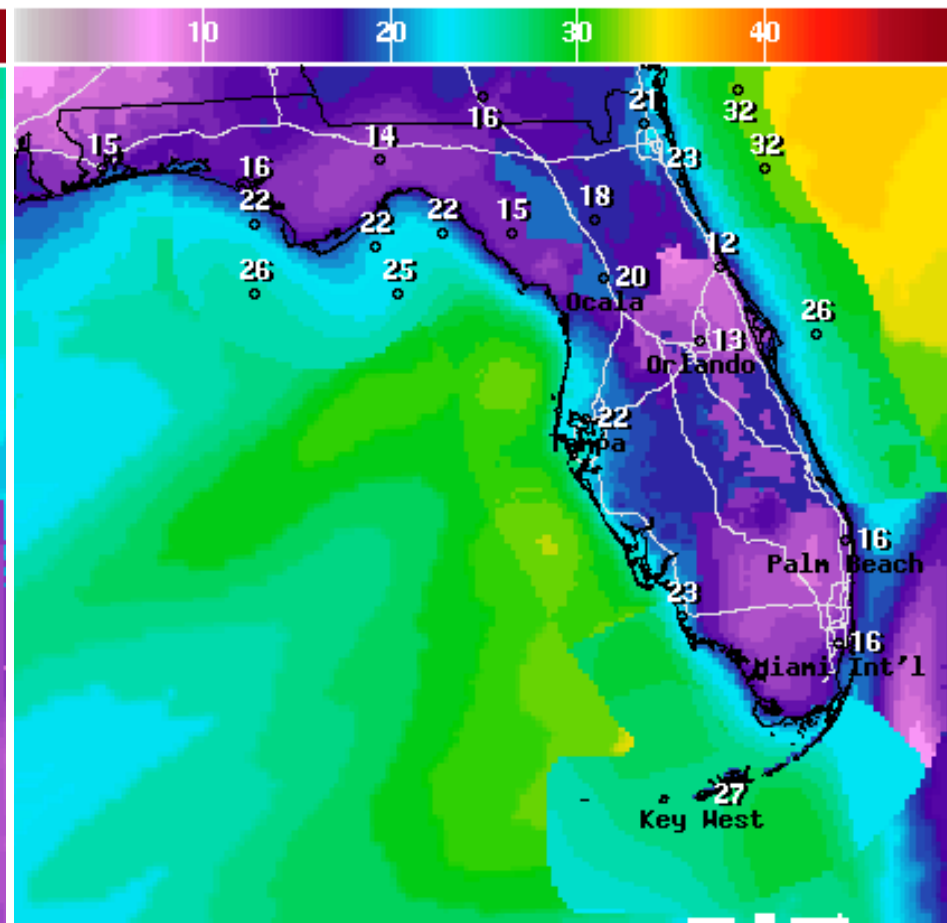


WindSpd(Kts) & WindDir For Sun Oct 29 2017 2PM EDT

(Sun Oct 29 2017 18Z)

National Digital Forecast Database

13z issuance Graphic created-Oct 27 9:33AM EDT



Wind Gust(Kts) Sun Oct 29 2017 2PM EDT

(Sun Oct 29 2017 18Z)

National Digital Forecast Database

13z issuance Graphic created-Oct 27 9:52AM EDT



Summary:

- Invest 93L, located over the northwest Caribbean Sea, has seen an increase in and concentration of its associated showers and thunderstorms.
- The National Hurricane Center has given 93L a 60% (medium) chance of development within the next 48 hours and a 60% (medium) chance of development within the next 2-5 days, an increase from 24 hours ago.
- 93L is expected to move north over the next couple of days and it has an opportunity for development while over the warm waters of the northwest Caribbean today and Saturday. It could become a tropical depression during this time.
- An Air Force Reserve reconnaissance aircraft is scheduled to investigate the system this afternoon if necessary.
- Model track guidance has trended to a quicker northeast turn away from Florida over the past 24 hours, making the chances for any direct wind impacts from 93L much less likely.
- The next name on the 2017 Atlantic storm list is Philippe (fee-LEEP).

Florida Outlook:

- Regardless of 93L's development, impacts to South Florida are likely to be the same. Tropical moisture will be pulled northward along the cold front across South Florida tonight through early Sunday.
- Rainfall totals this weekend across South Florida and the Keys will generally be 2-4" with locally higher amounts of 6" possible. Strong to marginally severe storms could produce brief, isolated tornadoes and damaging winds in South Florida Saturday afternoon and evening.
- On Sunday, in the wake of the front, winds of 20-25 mph, with gusts up to 30 mph, are forecast for the Keys. Gusts up to 20 mph are possible in the Peninsula.

Another briefing packet will be issued on Saturday, if necessary. For more information, visit the NHC website at www.hurricanes.gov.



TROPICAL UPDATE

Created by:

William Watson, Assistant State Meteorologist

william.watson@em.myflorida.com

State Meteorological Support Unit

Florida Division of Emergency Management

Users wishing to subscribe (approval pending) to this distribution list, please register at:

https://public.govdelivery.com/accounts/FLDEM/subscriber/new?topic_id=SERT_Met_Tropics.

Other reports available for subscription are available at:

<https://public.govdelivery.com/accounts/FLDEM/subscriber/new?preferences=true>