



# TROPICAL UPDATE

10 AM EDT

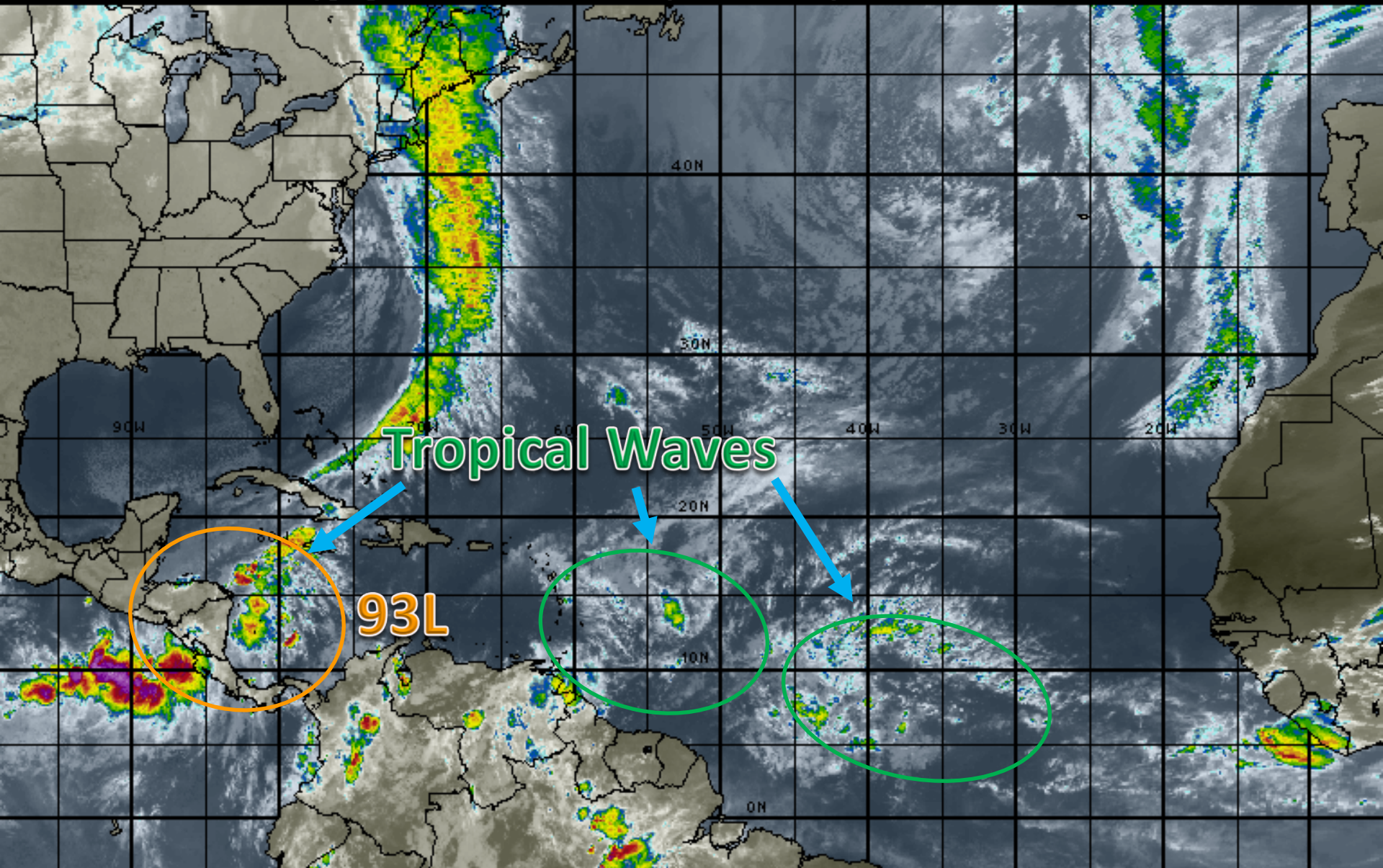
Thursday, October 26, 2017

Invest Area 93L (40%)

This update is intended for government and emergency response officials, and is provided for informational and situational awareness purposes only. Forecast conditions are subject to change based on a variety of environmental factors. For additional information, or for any life safety concerns with an active weather event please contact your County Emergency Management or Public Safety Office, local National Weather Service forecast office or visit the National Hurricane Center website at [www.nhc.noaa.gov](http://www.nhc.noaa.gov).

# Atlantic Basin Satellite Image

12:00 26-OCT-2017 GMT Copyright © 1998-2017 MSI Corporation <http://www.wsi.com>







# Five-Day Graphical Tropical Weather Outlook

National Hurricane Center Miami, Florida



www.hurricanes.gov

Disturbance 1

\* Formation chance through 48 hours...**low**...30 percent.  
\* Formation chance through 5 days...**medium**...40 percent.

1  
(40%)

8:00 am EDT  
Thu Oct 26 2017

100°W 90°W 80°W 70°W 60°W 50°W 40°W 30°W 20°W

Current Disturbances and Five-Day Cyclone Formation Chance: < 40% 40-60% > 60%

Tropical or Sub-Tropical Cyclone: Depression Storm Hurricane

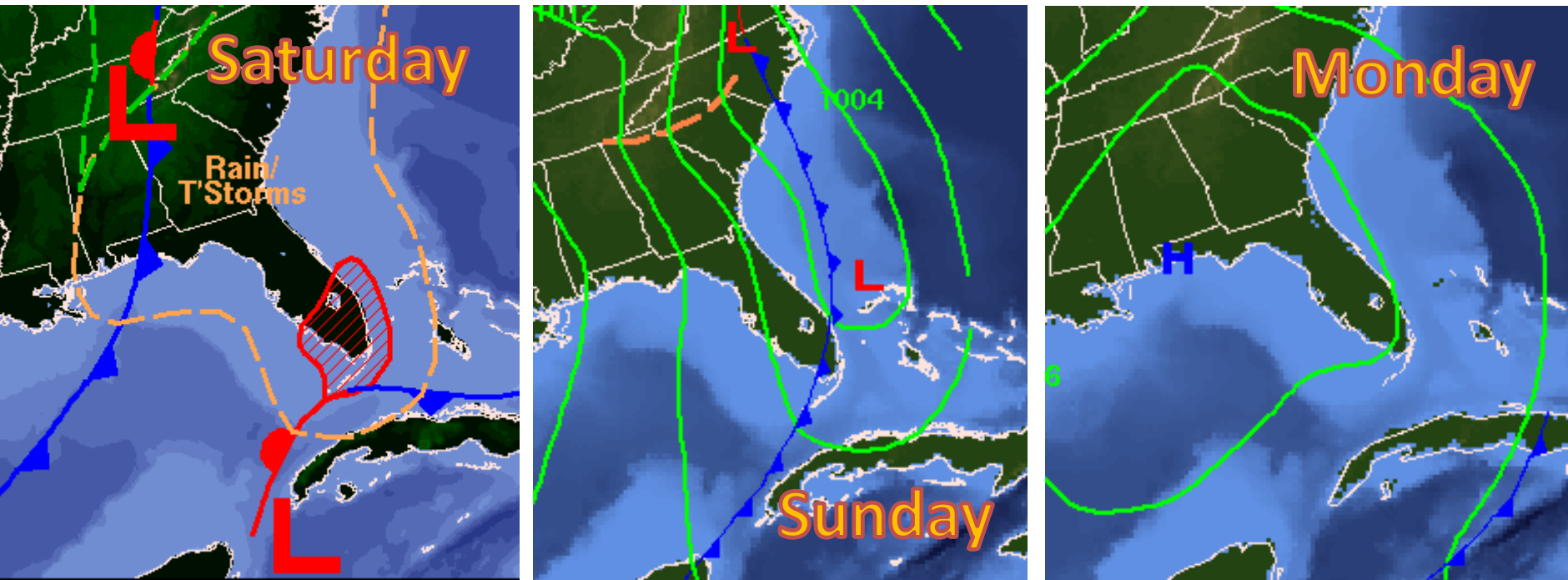
Post-Tropical Cyclone Remnants

# Invest 93L Satellite Image

93L still has only a very broad area of low pressure, and without a well-defined center, models will struggle with its eventual track.



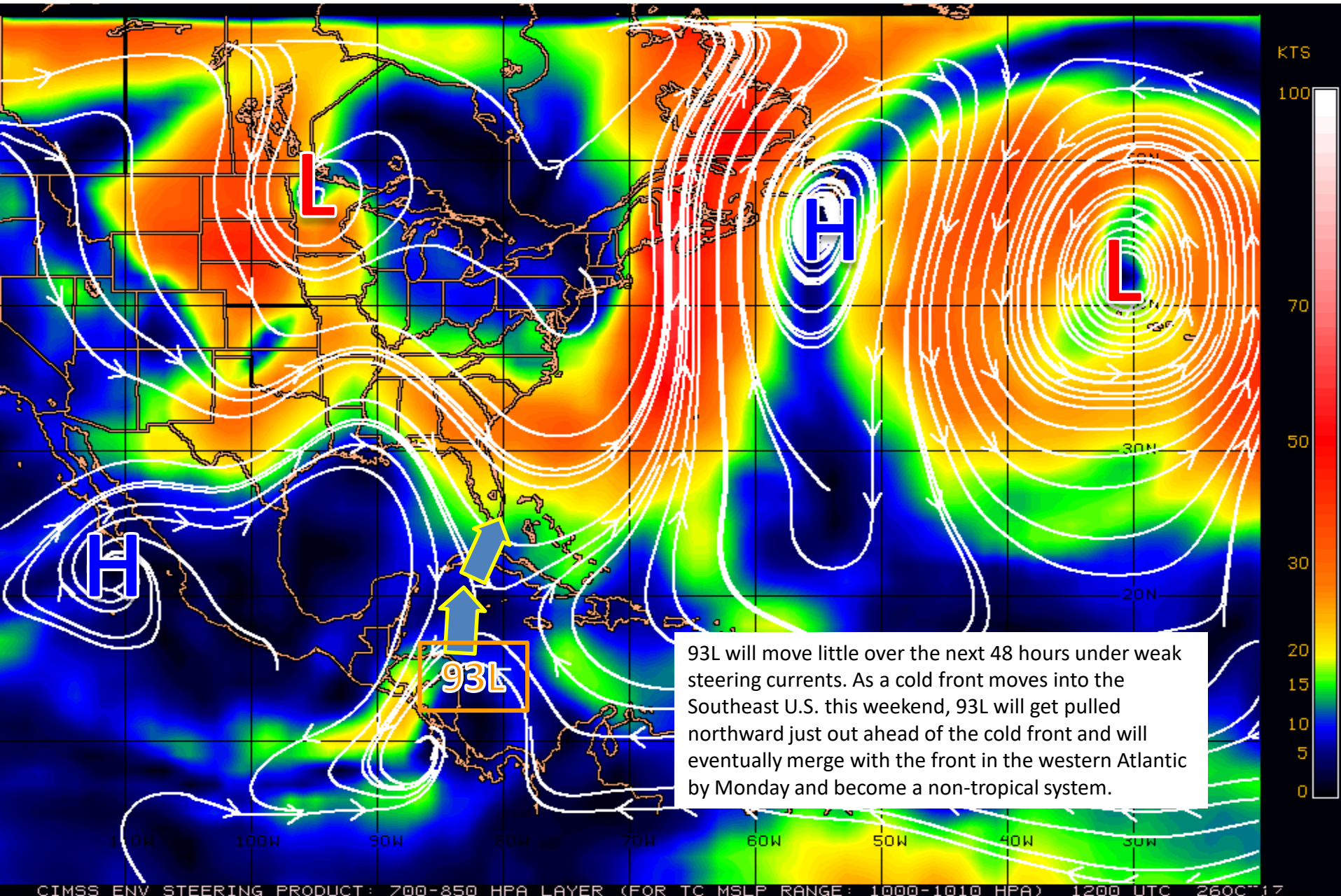
# Forecast Weather Maps Through This Weekend



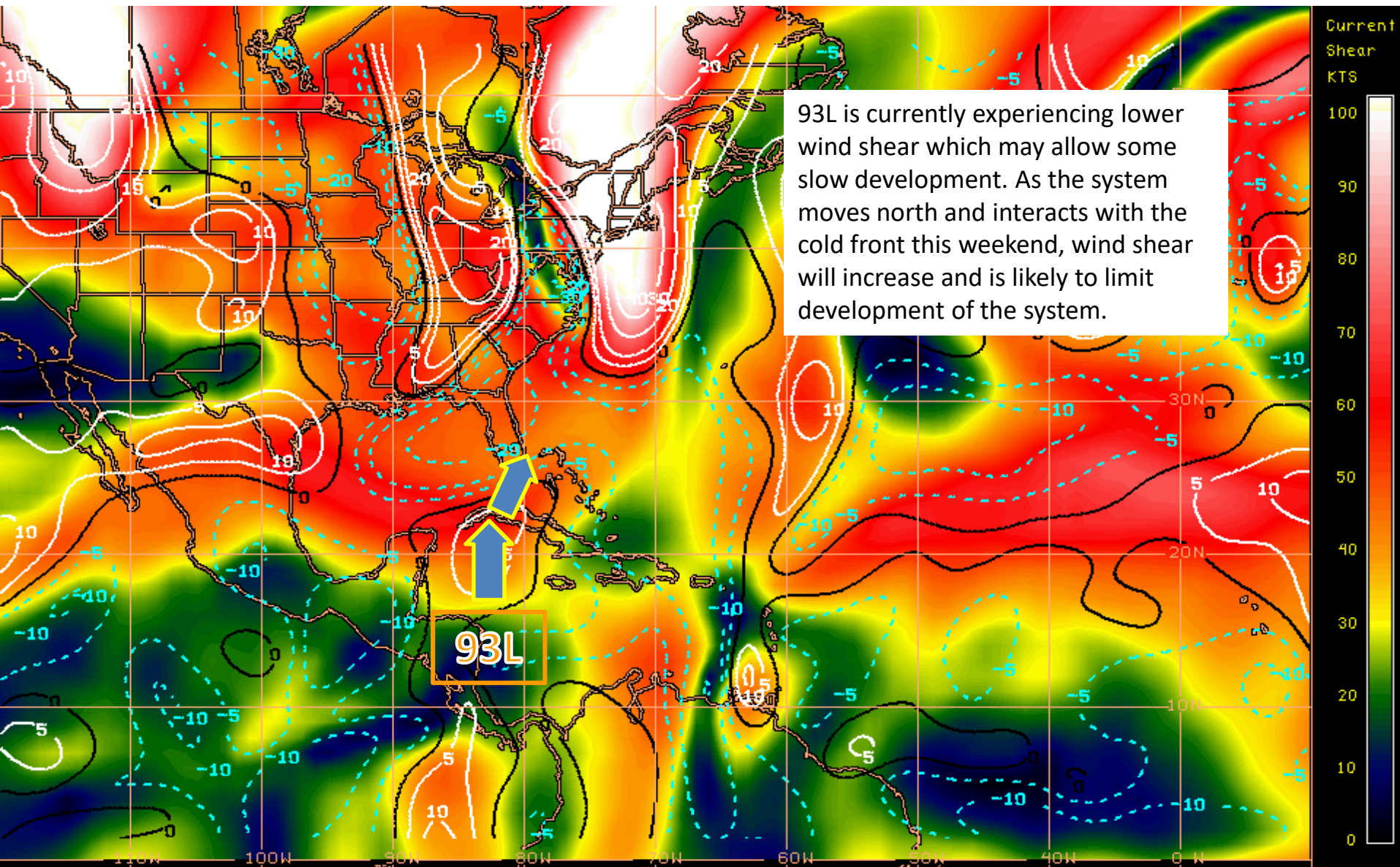
- As high pressure moves into the Southeast U.S./Gulf of Mexico region, wind shear may decrease slightly and allow 93L to organize some over the next couple days.
- Another cold front is forecast to move through the state this weekend and it will push the system northeast across Cuba and possibly South Florida on Saturday and into Sunday.



# Steering Currents



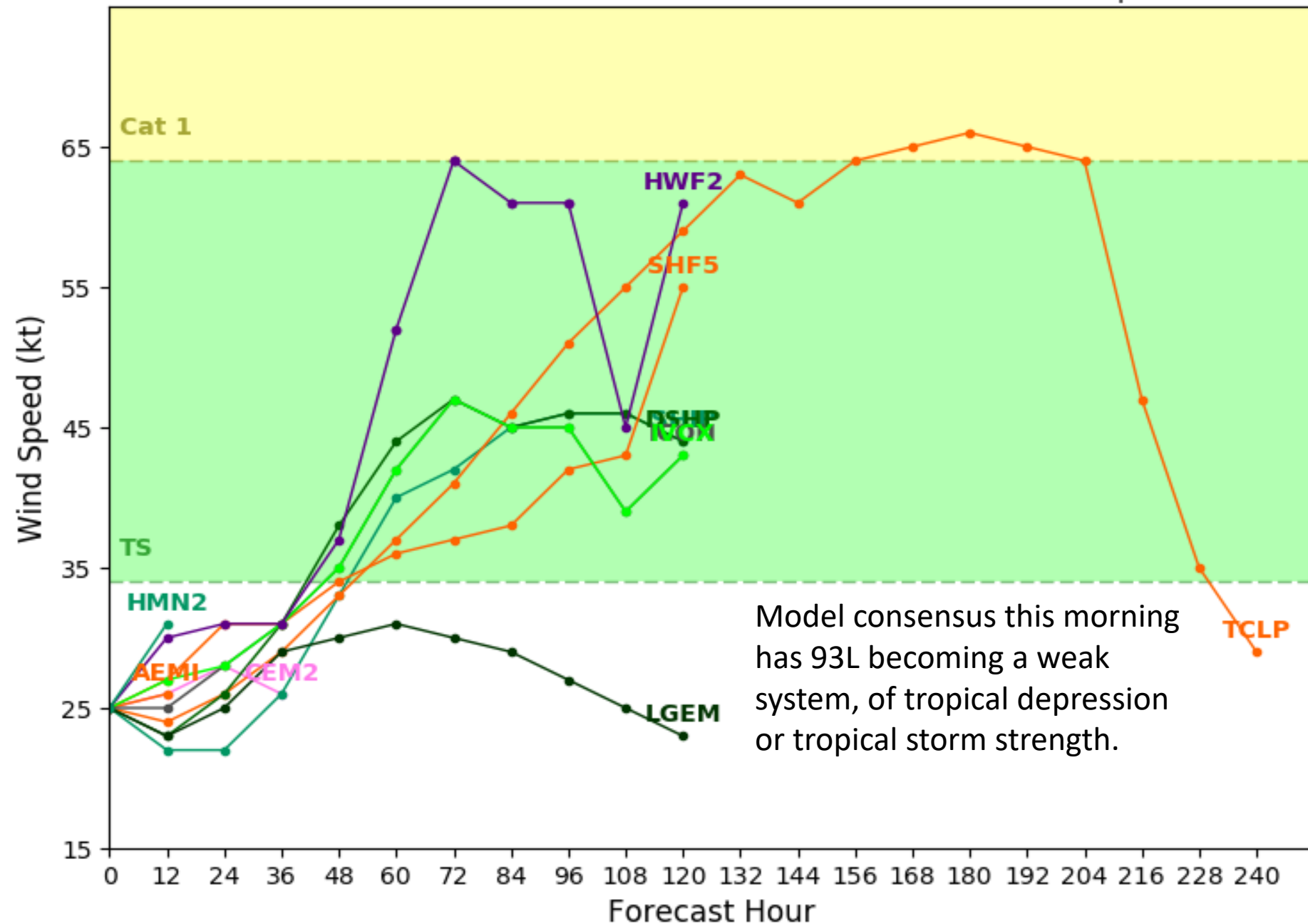
# Current Wind Shear (Shaded) and Shear Tendency (Lines)



Shear Tendency (KTS) Over Past 24 Hours: Increasing ——— Decreasing - - - -

**Initialized at 12z Oct 26 2017**

Levi Cowan - [tropicaltidbits.com](http://tropicaltidbits.com)

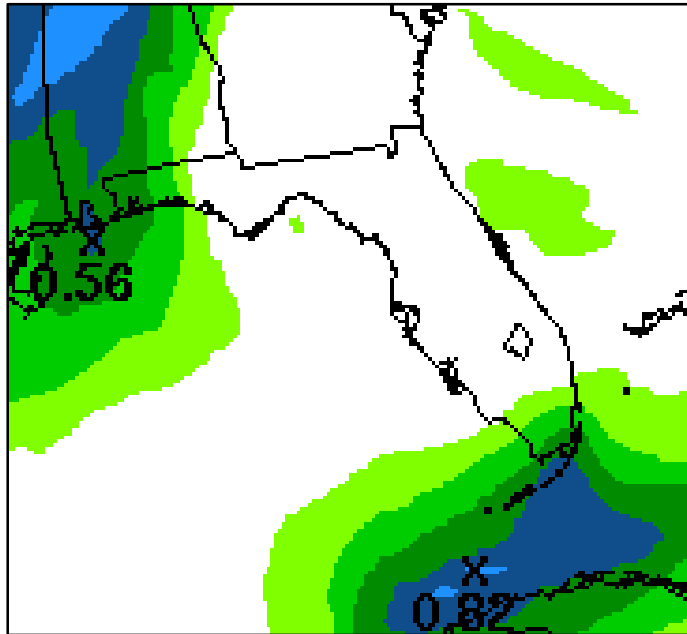
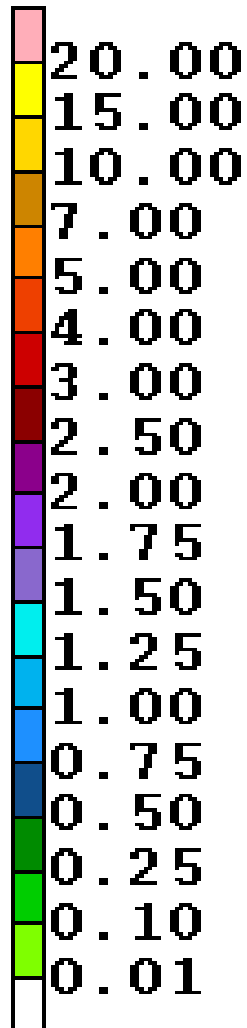




# Forecast Cumulative Rainfall Totals

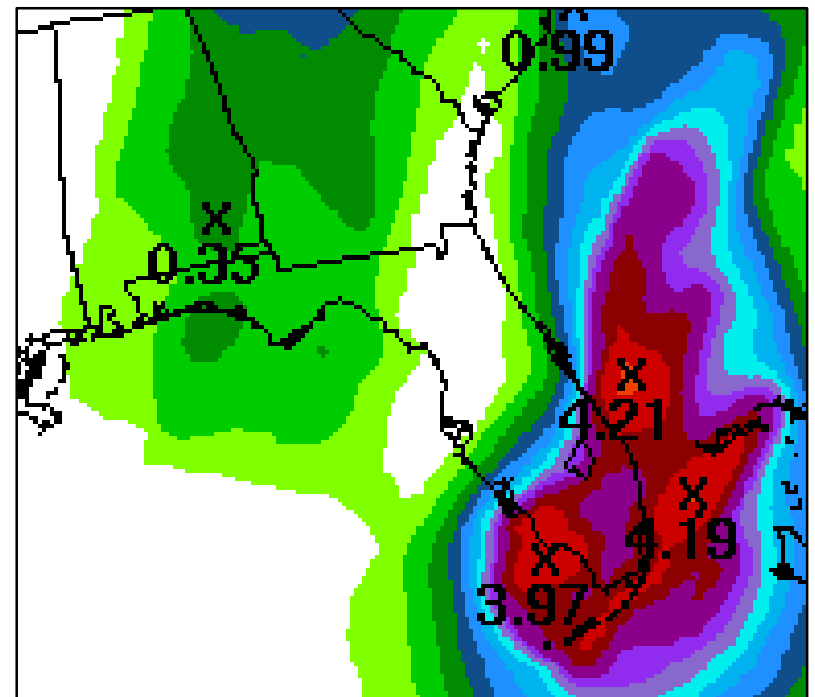
## Friday & Saturday

Today will be dry under high pressure. Isolated showers and thunderstorms are possible across the Keys on Friday. On Saturday, a cold front and 93L will enhance rainfall chances across most of the state. Below are forecast rainfall totals for Friday and Saturday. Locally higher amounts are possible.

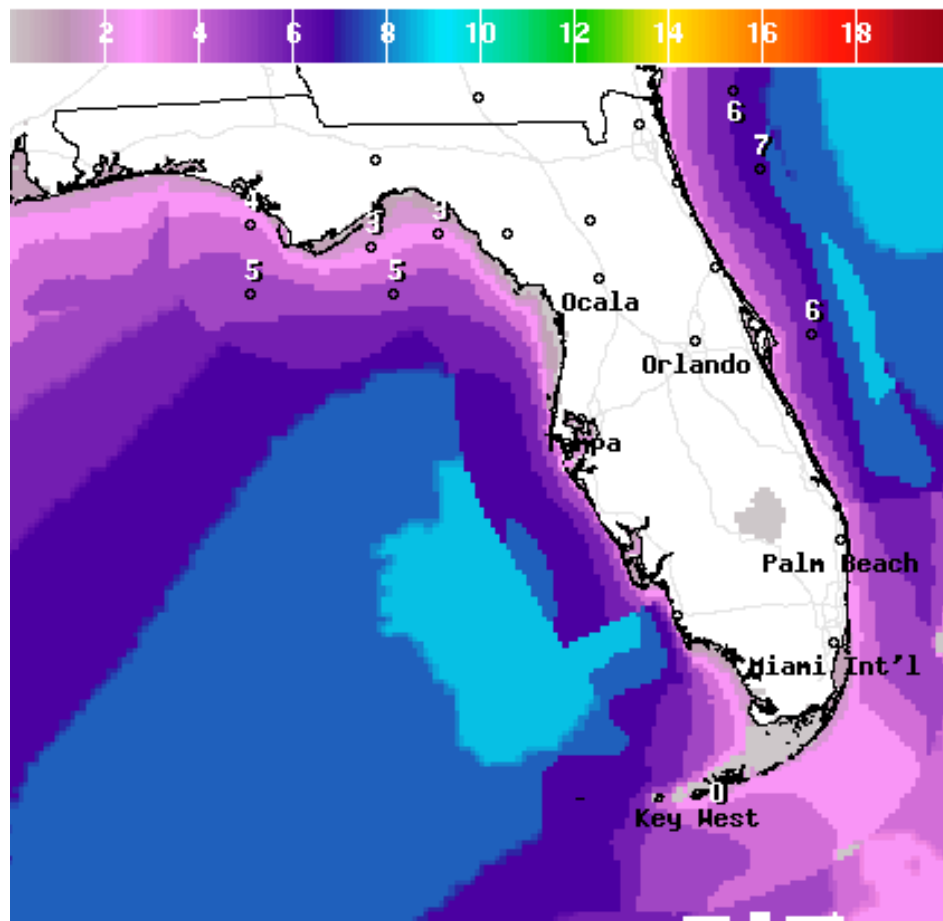


Friday

Saturday



# Wind Speed & Wave Heights Sunday

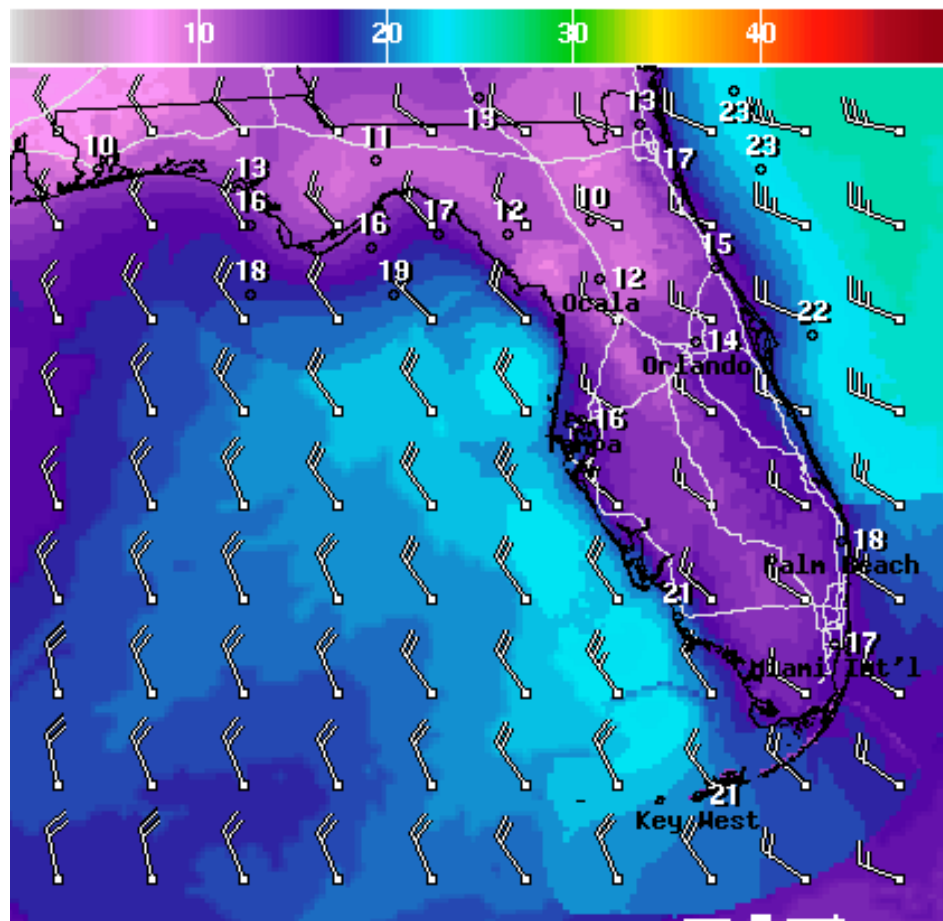


Wave Height(ft) Ending Sun Oct 29 2017 2PM EDT  
(Sun Oct 29 2017 18Z)



**National Digital Forecast Database**

12z issuance Graphic created-Oct 26 8:59AM EDT



WindSpd(Kts) & WindDir For Sun Oct 29 2017 2PM EDT  
(Sun Oct 29 2017 18Z)



**National Digital Forecast Database**

12z issuance Graphic created-Oct 26 9:05AM EDT



## **Summary:**

- Disorganized showers and thunderstorms associated with a broad area of low pressure over the western Caribbean Sea and Central America has been designated Invest 93L.
- The National Hurricane Center has given this disturbance a 30% (low) chance of development within the next 48 hours and a 40% (medium) chance of development within the next 2-5 days.
- 93L is expected to drift northward over the next couple of days and it has an opportunity for some development while over the warm waters of the northwest Caribbean on Friday and Saturday.
- If any tropical development occurs, model guidance suggests it will likely be a weaker system due to high wind shear from the nearby cold front. 93L is expected to be quickly pushed northeast by the front late Saturday.
- The next name on the 2017 Atlantic storm list is Philippe (fee-LEEP).

## **Florida Outlook:**

- Regardless of development, impacts to South Florida are likely to be the same. Tropical moisture will be pulled northward along the cold front across South Florida late Friday through early Sunday.
- Rainfall totals this weekend across South Florida and the Keys will generally be 2-4" with locally higher amounts of 6" possible. Hazardous marine conditions also appear likely, including a high risk for rip currents and high surf late Saturday and Sunday.

Another briefing packet will be issued on Friday, if necessary. For more information, visit the NHC website at [www.hurricanes.gov](http://www.hurricanes.gov).





# TROPICAL UPDATE

Created by:

William Watson, Assistant State Meteorologist  
[william.watson@em.myflorida.com](mailto:william.watson@em.myflorida.com)

State Meteorological Support Unit

Florida Division of Emergency Management

Users wishing to subscribe (approval pending) to this distribution list, please register at:  
[https://public.govdelivery.com/accounts/FLDEM/subscriber/new?topic\\_id=SERT\\_Met\\_Tropics](https://public.govdelivery.com/accounts/FLDEM/subscriber/new?topic_id=SERT_Met_Tropics).

Other reports available for subscription are available at:

<https://public.govdelivery.com/accounts/FLDEM/subscriber/new?preferences=true>