



TROPICAL UPDATE

8 AM EDT

Saturday, October 7, 2017

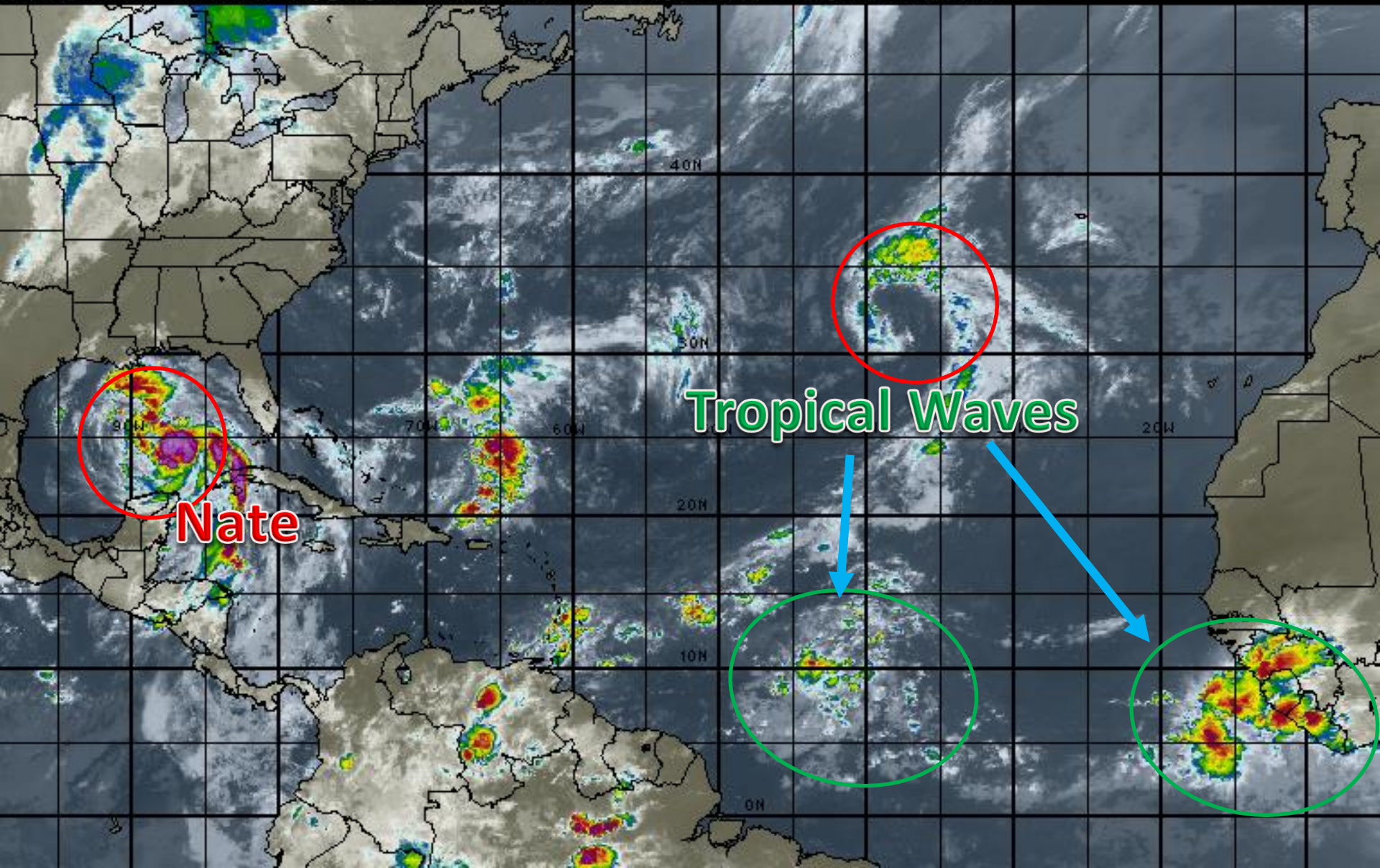
Hurricane Nate &

Northeast Atlantic Low (70%)

This update is intended for government and emergency response officials, and is provided for informational and situational awareness purposes only. Forecast conditions are subject to change based on a variety of environmental factors. For additional information, or for any life safety concerns with an active weather event please contact your County Emergency Management or Public Safety Office, local National Weather Service forecast office or visit the National Hurricane Center website at www.nhc.noaa.gov.

Atlantic Basin Satellite Image

09:00 07-OCT-2017 GMT Copyright © 1998-2017 WSI Corporation <http://www.wsi.com>





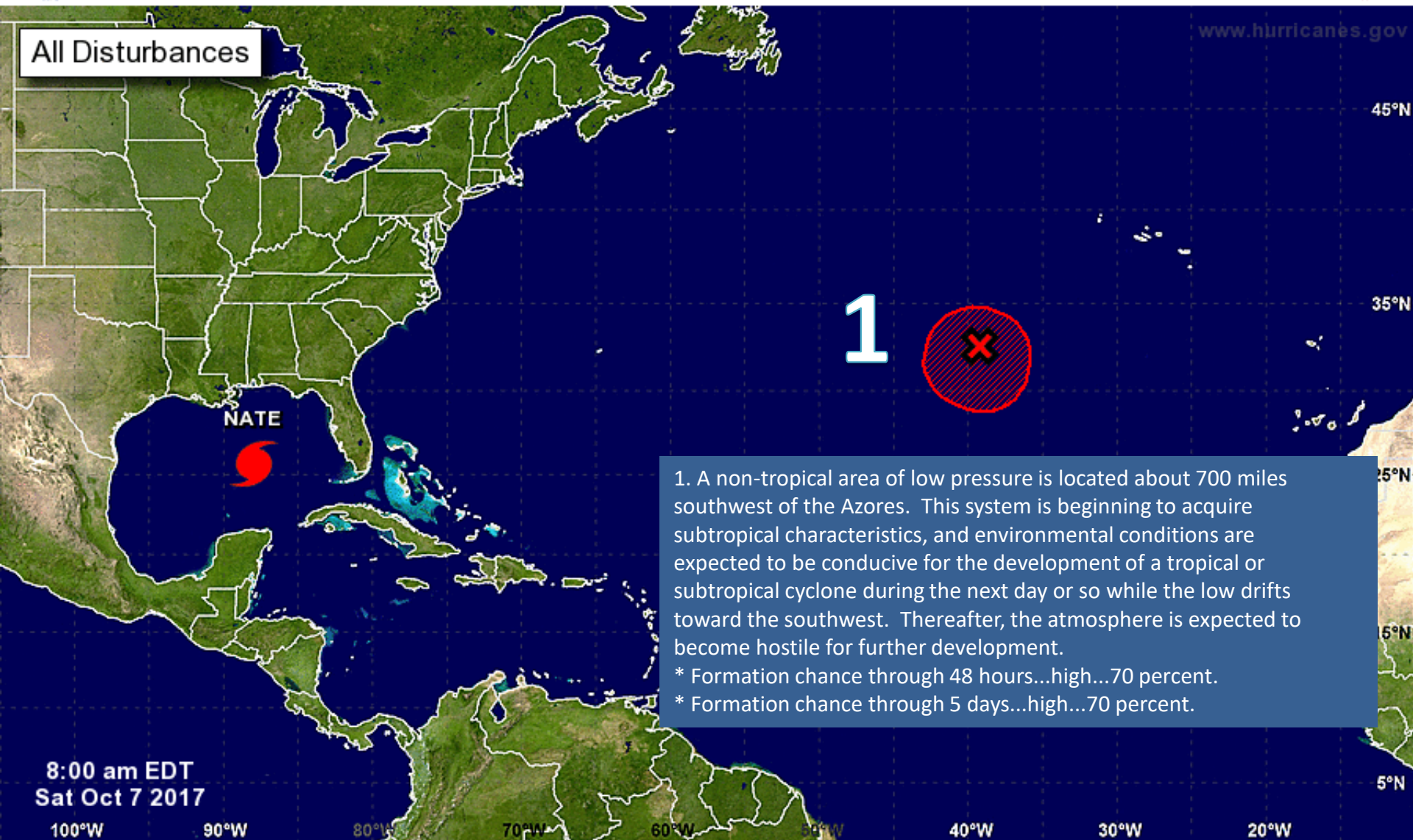
Five-Day Graphical Tropical Weather Outlook

National Hurricane Center Miami, Florida



www.hurricanes.gov

All Disturbances



1. A non-tropical area of low pressure is located about 700 miles southwest of the Azores. This system is beginning to acquire subtropical characteristics, and environmental conditions are expected to be conducive for the development of a tropical or subtropical cyclone during the next day or so while the low drifts toward the southwest. Thereafter, the atmosphere is expected to become hostile for further development.

* Formation chance through 48 hours...high...70 percent.

* Formation chance through 5 days...high...70 percent.

8:00 am EDT
Sat Oct 7 2017

Current Disturbances and Five-Day Cyclone Formation Chance: ✖ < 40% ✖ 40-60% ✖ > 60%
Tropical or Sub-Tropical Cyclone: ○ Depression 🌀 Storm 🌀 Hurricane
⊗ Post-Tropical Cyclone ✖ Remnants

A satellite map of Hurricane Nate in the Gulf of Mexico. The hurricane is shown as a large, swirling cloud system with a bright red center indicating the eye. The map includes labels for several cities: Jackson, Mobile, New Orleans, Apalachicola, Tampa, Miami, Havana, and Cancún. A white arrow points from the hurricane's center towards the southwest. In the top right corner, there is a red box with a black square icon, followed by the text 'HURRICANE NATE' and '4:00 AM CDT'. Below this, a black box contains the text 'LAT: 24.5°N LON: 87.0°W' and '345 MI SSE OF THE MOUTH OF THE MISSISSIPPI RIVER'. To the right of the hurricane, another black box displays 'WINDS: 80 MPH', 'PRESSURE: 987 mb', and 'MOVING: NNW at 22 MPH'.

HURRICANE NATE

4:00 AM CDT

LAT: 24.5°N LON: 87.0°W

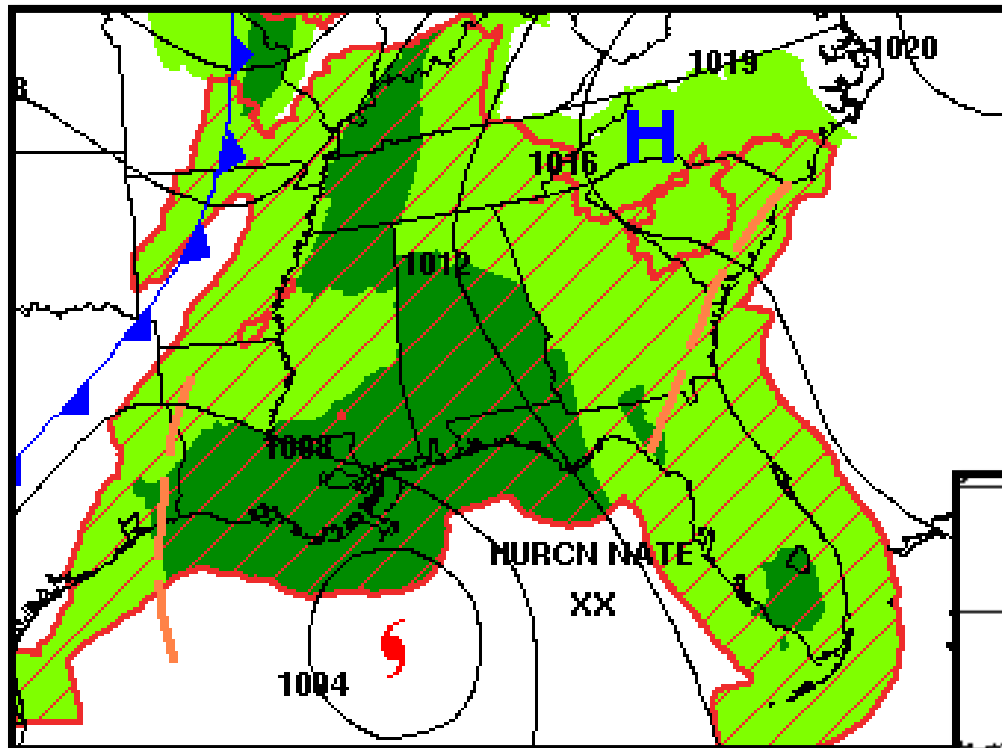
345 MI SSE OF THE MOUTH OF THE MISSISSIPPI RIVER

WINDS: 80 MPH

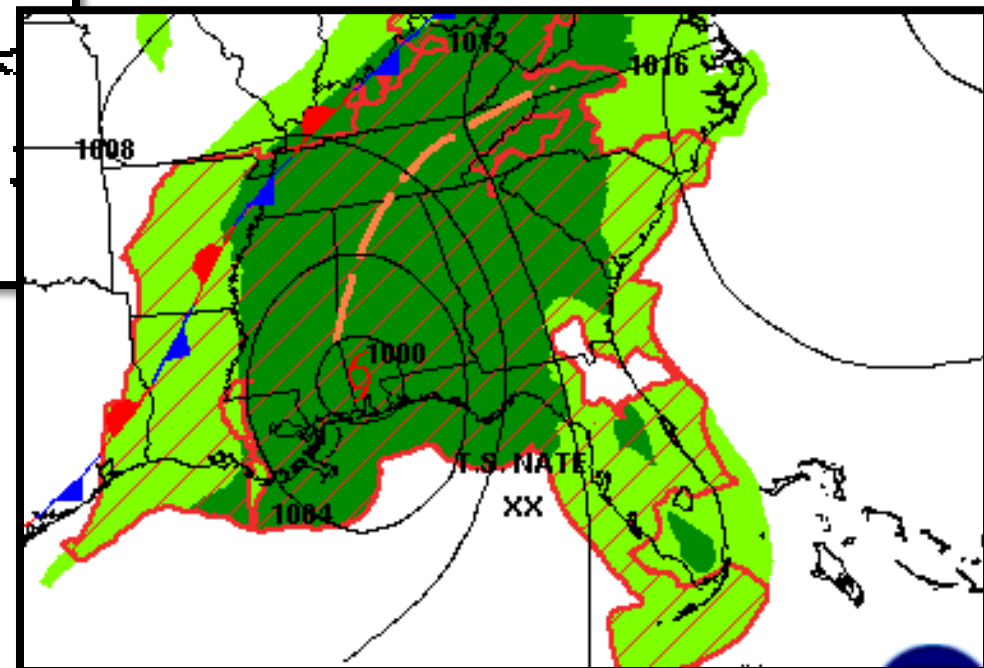
PRESSURE: 987 mb

MOVING: NNW at 22 MPH

Forecast Weather Map – Saturday afternoon (left) and Sunday (right)

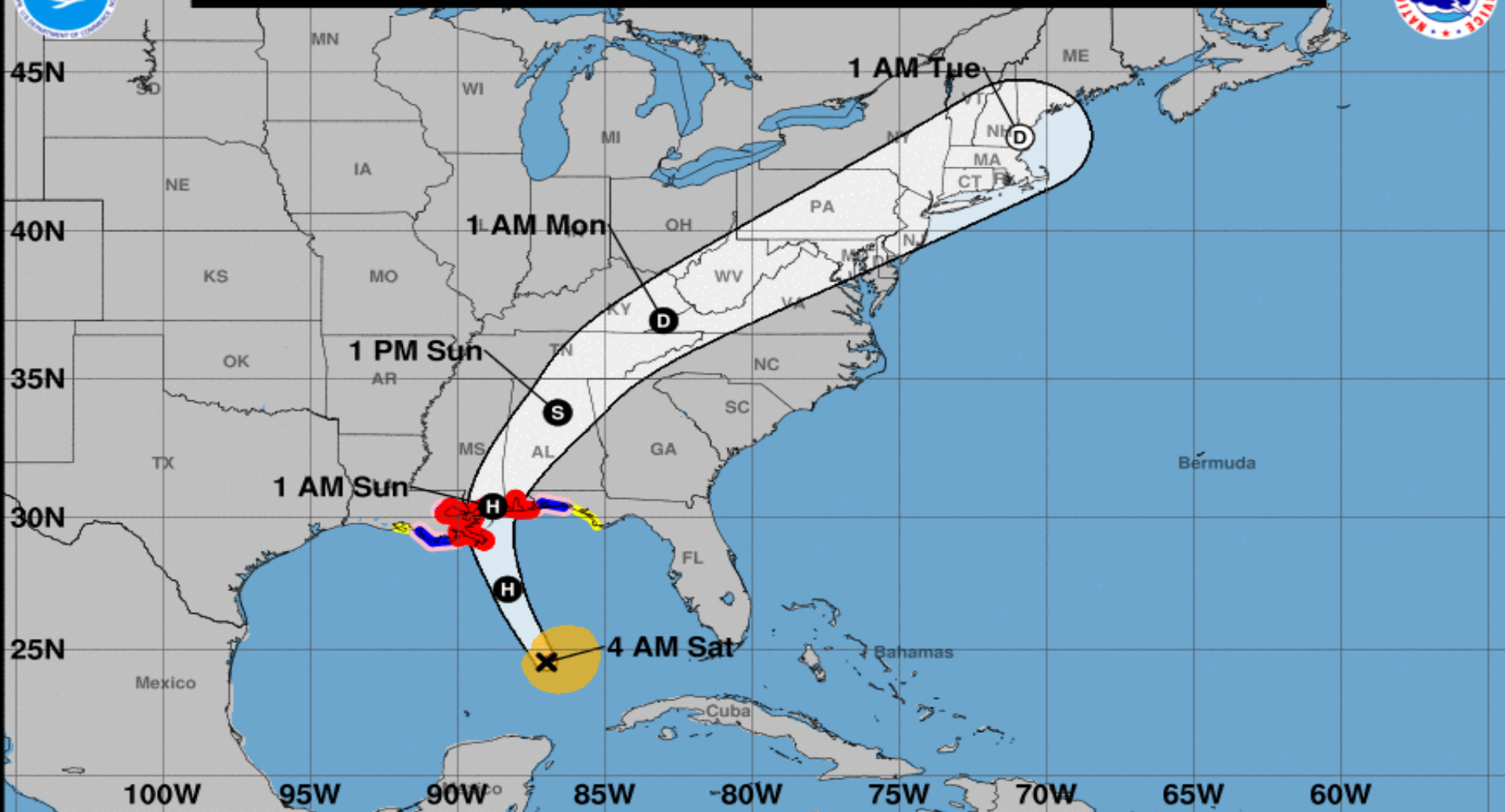


Nate is forecast to move in between high pressure off the U.S. East coast and a cold front moving into the Ohio/Mississippi Valleys.





Note: The cone contains the probable path of the storm center but does not show the size of the storm. Hazardous conditions can occur outside of the cone.



Hurricane Nate

Saturday October 07, 2017
4 AM CDT Advisory 12
NWS National Hurricane Center

Current information: x

Center location 24.5 N 87.0 W
Maximum sustained wind 80 mph
Movement NNW at 22 mph

Forecast positions:

● Tropical Cyclone ○ Post/Potential TC
Sustained winds: D < 39 mph
S 39-73 mph H 74-110 mph M > 110 mph

Potential track area:

Day 1-3 Day 4-5

Watches:

Hurricane Trop Stm

Warnings:

Hurricane Trop Stm

Current wind extent:

Hurricane Trop Stm

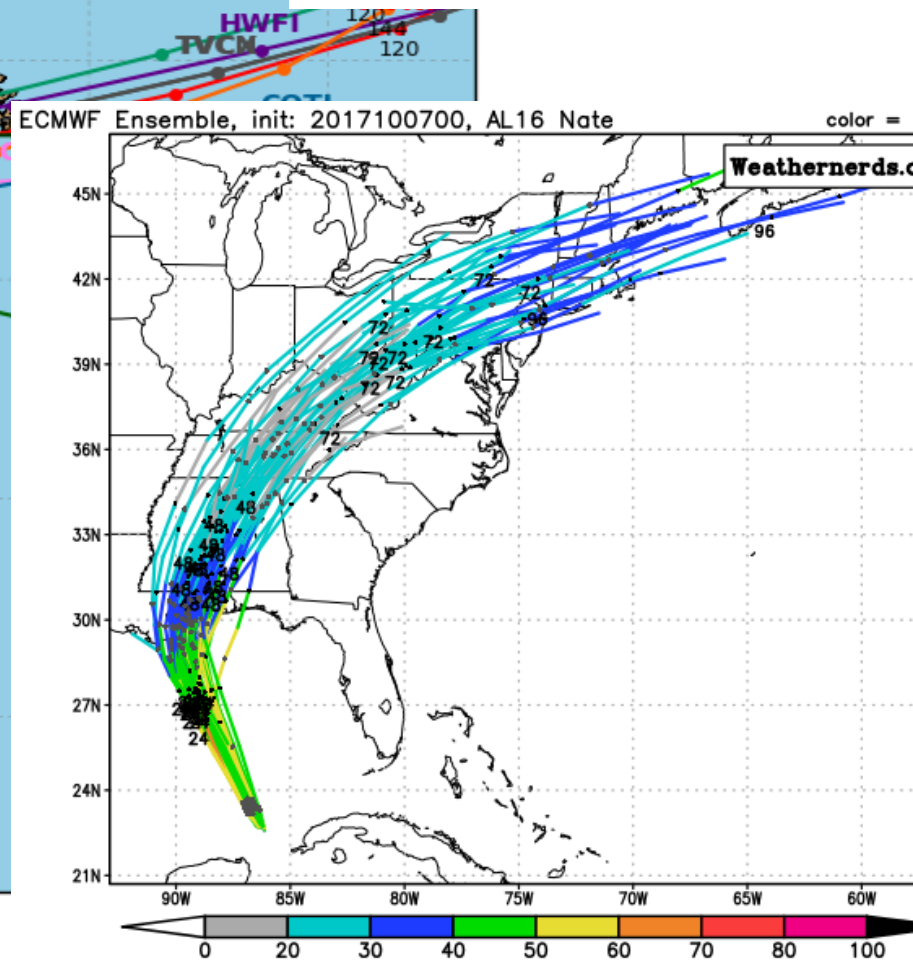
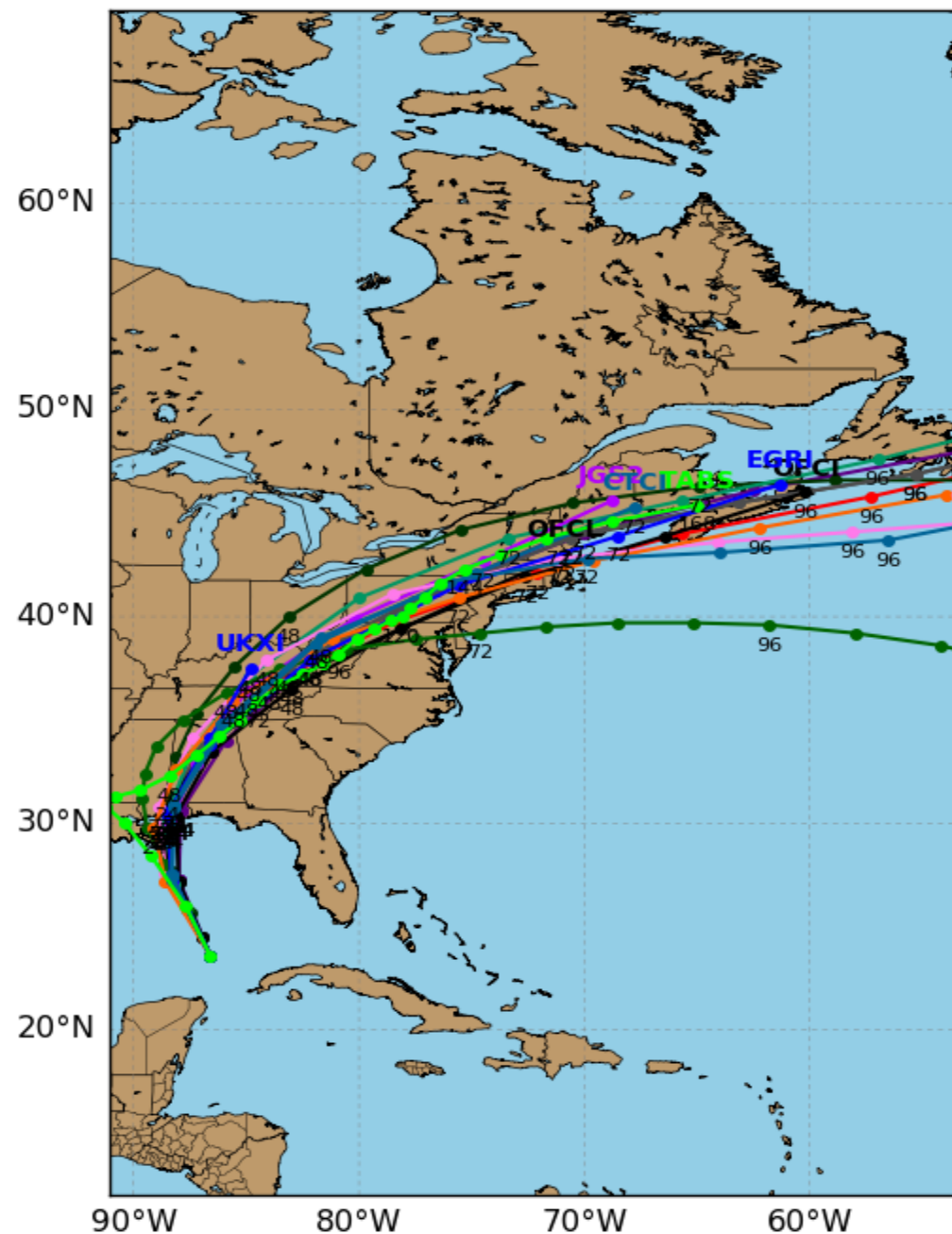
Hurricane NATE Model Track Guidance

Initialized at 06z Oct 07 2017

Levi Cowan - tropic

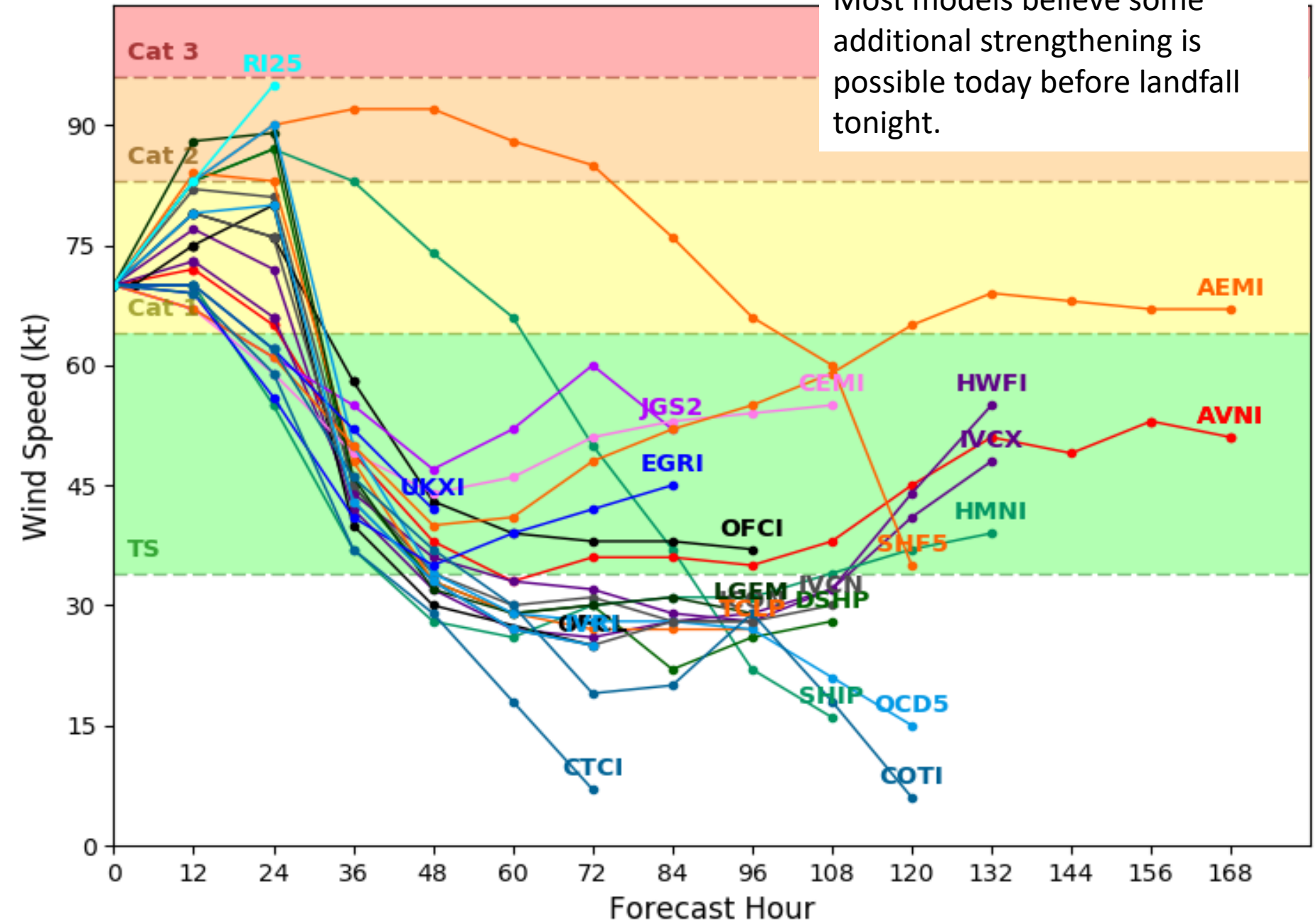
DO NOT USE
TO MAKE DE
SEEK OFFI

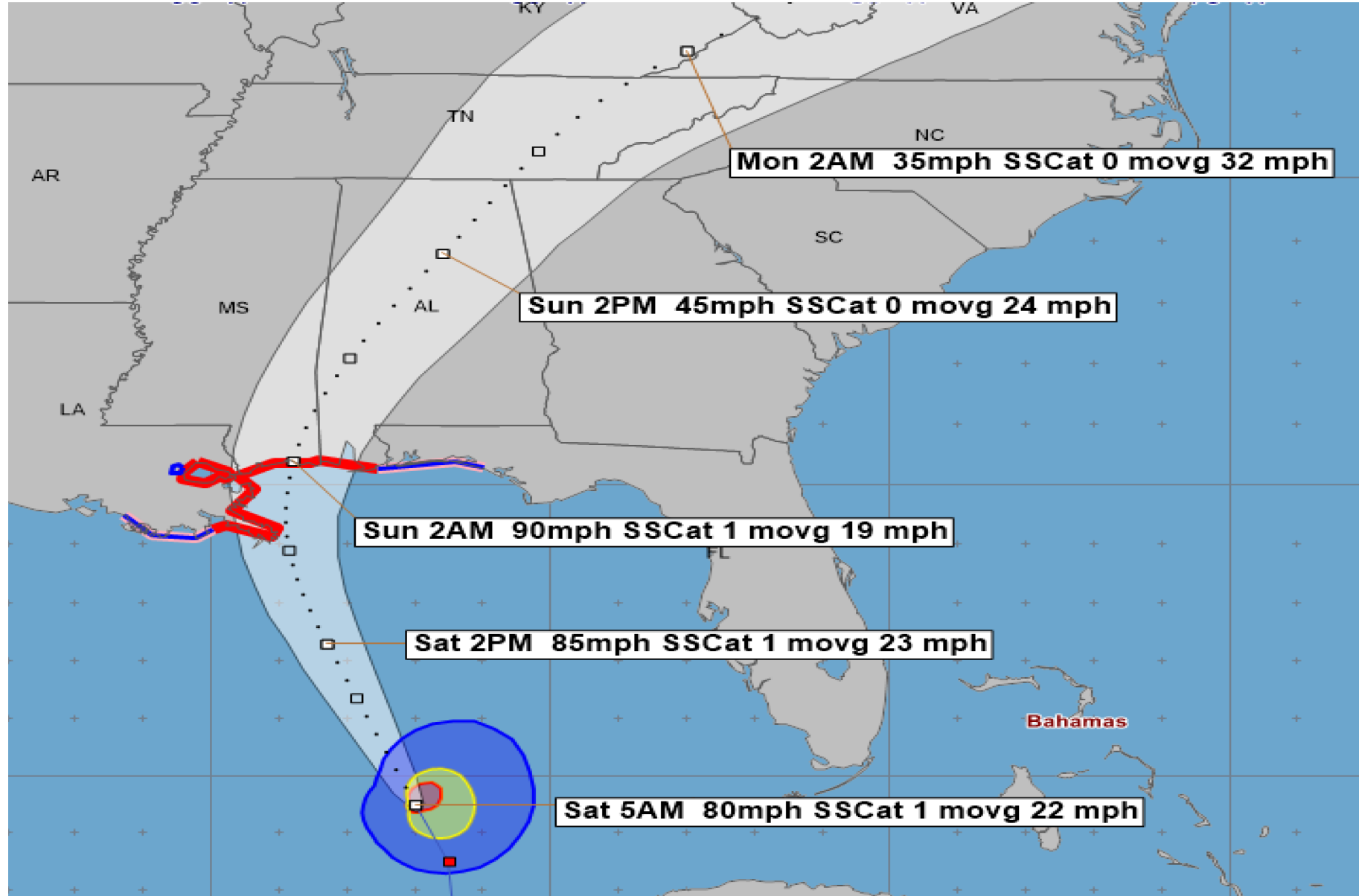
Model has remained consistent for the past 12-24 hours and remain in good agreement. The range of possibilities is between Mobile, AL and New Orleans, Louisiana.



Initialized at 06z Oct 07 2017

Most models believe some additional strengthening is possible today before landfall tonight.





TROPICAL ALERTS

**HURRICANE
WARNING**

**TROPICAL STORM
WARNING**

Conditions Likely

**HURRICANE
WATCH**

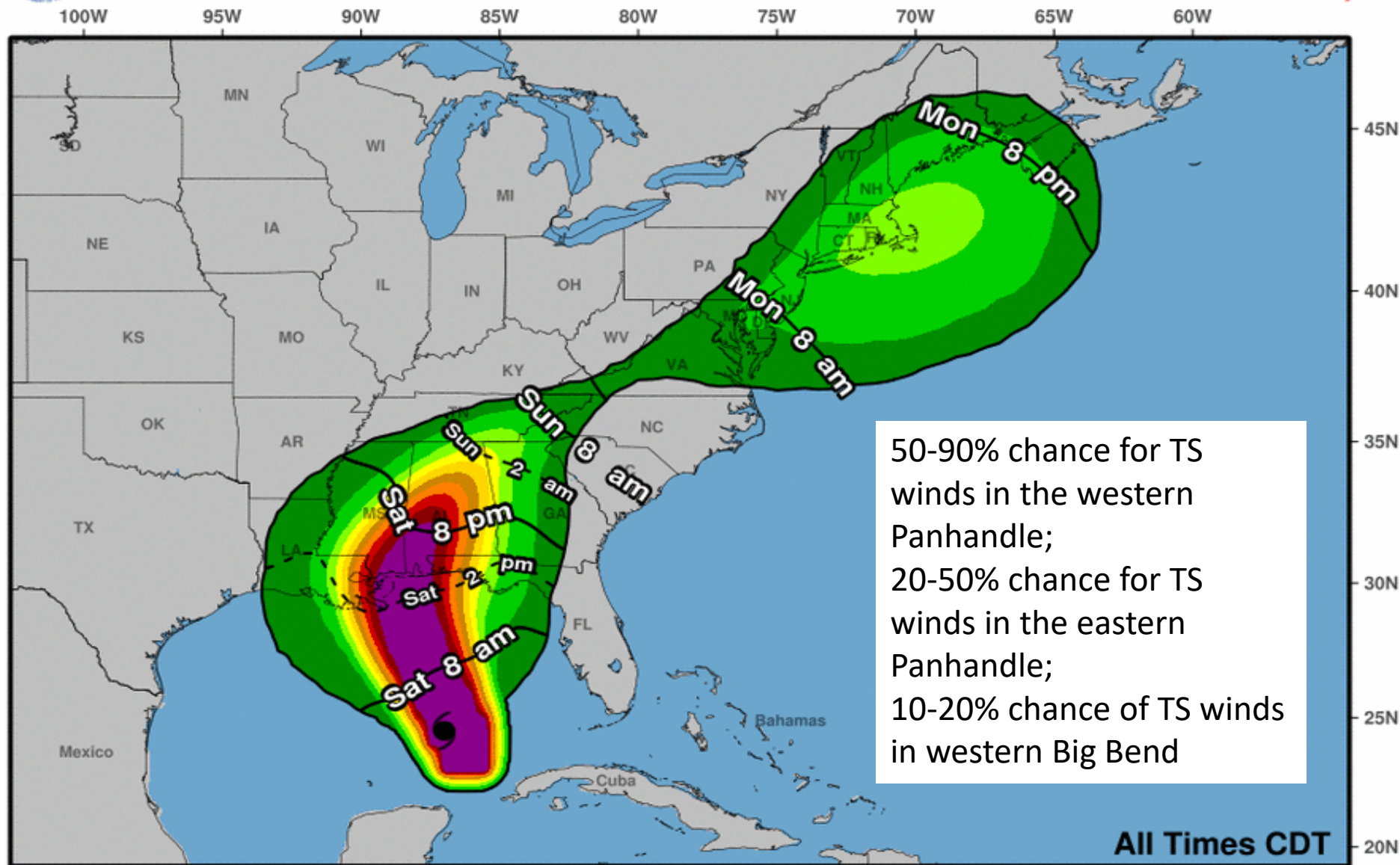
**TROPICAL STORM
WATCH**

Conditions Possible





Earliest Reasonable Arrival Time of Tropical-Storm-Force Winds



50-90% chance for TS winds in the western Panhandle;
20-50% chance for TS winds in the eastern Panhandle;
10-20% chance of TS winds in western Big Bend

Hurricane Nate
Sat. Oct. 7, 2017 4 am CDT
Advisory 12

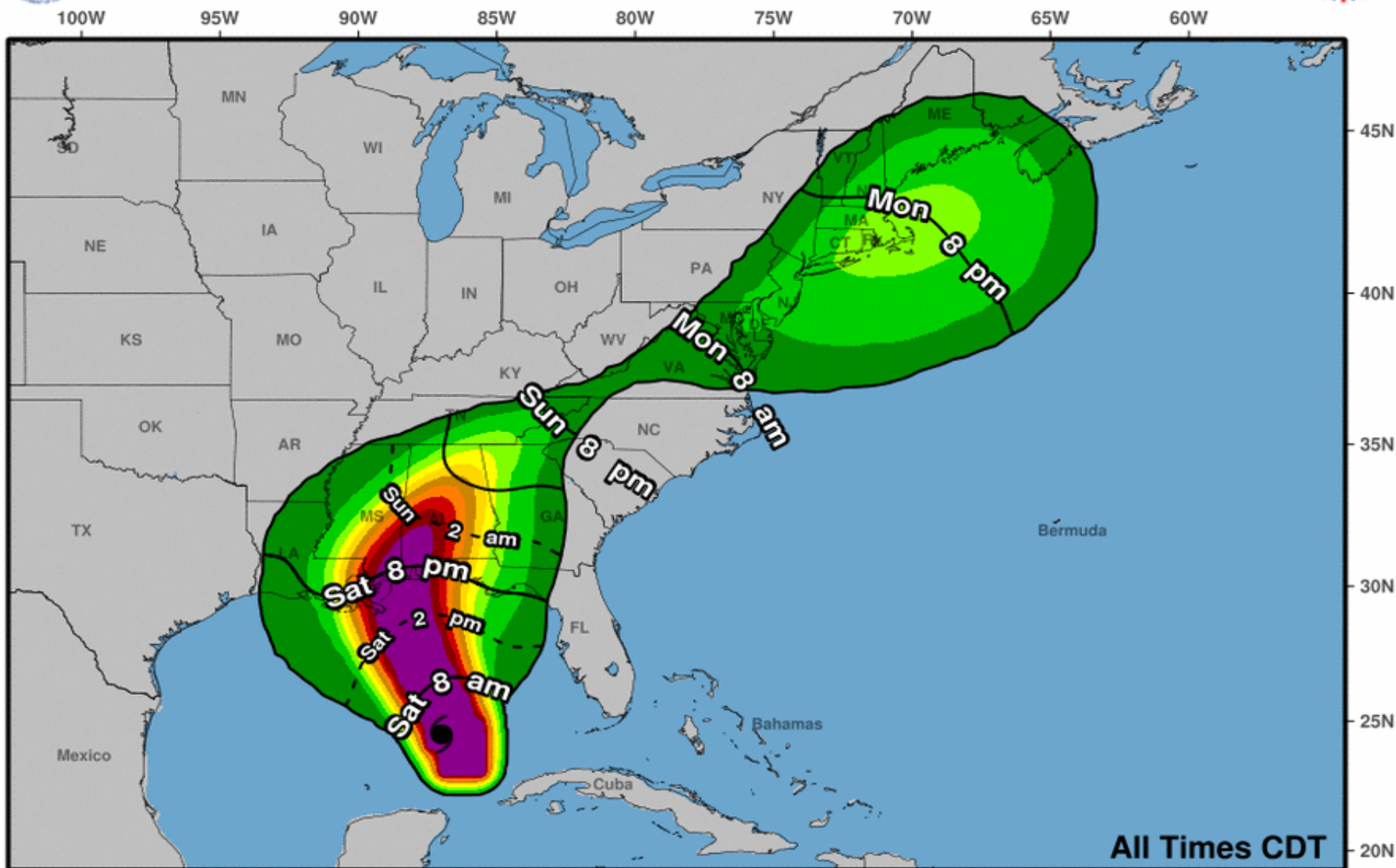
Storm Location & Wind Speed (knots)
○ <34 ◐ 34-63 ● ≥64

Five-day chance of receiving sustained 34+ knot (39+ mph) winds

5	10	20	30	40	50	60	70	80	90	100 %
---	----	----	----	----	----	----	----	----	----	-------



Most Likely Arrival Time of Tropical-Storm-Force Winds



Hurricane Nate
Sat. Oct. 7, 2017 4 am CDT
Advisory 12

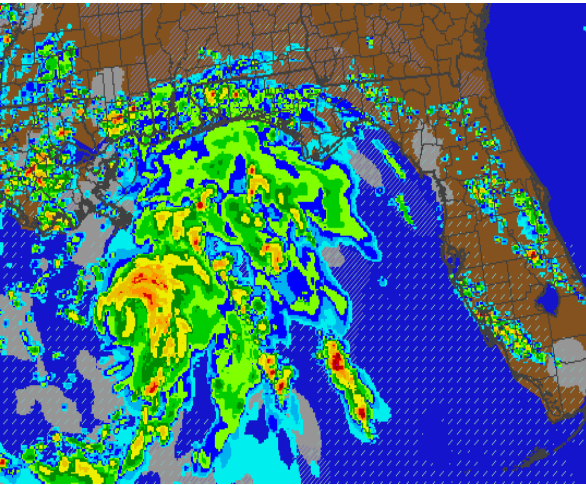
Storm Location &
Wind Speed (knots)
○ <34 ◐ 34-63 ◑ ≥64

Five-day chance of receiving sustained 34+ knot (39+ mph) winds

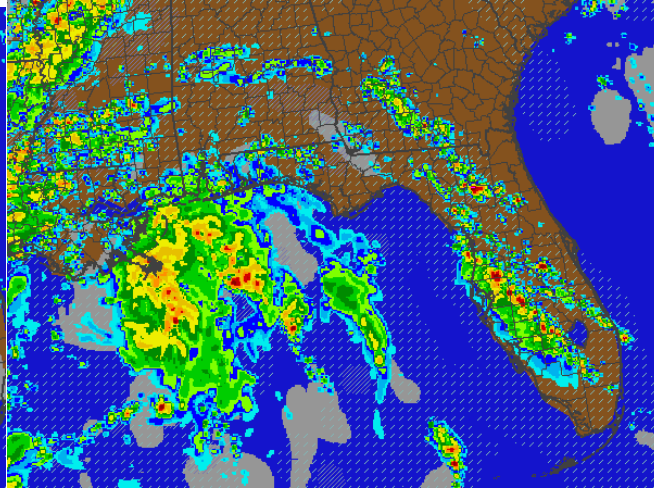


Future Radar – Saturday

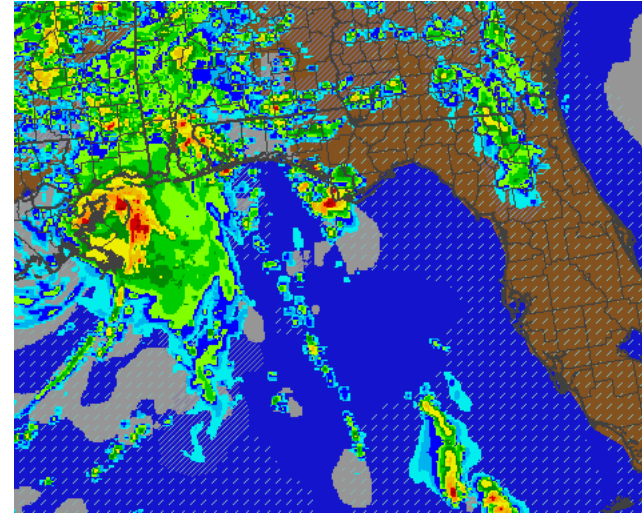
2pm CDT



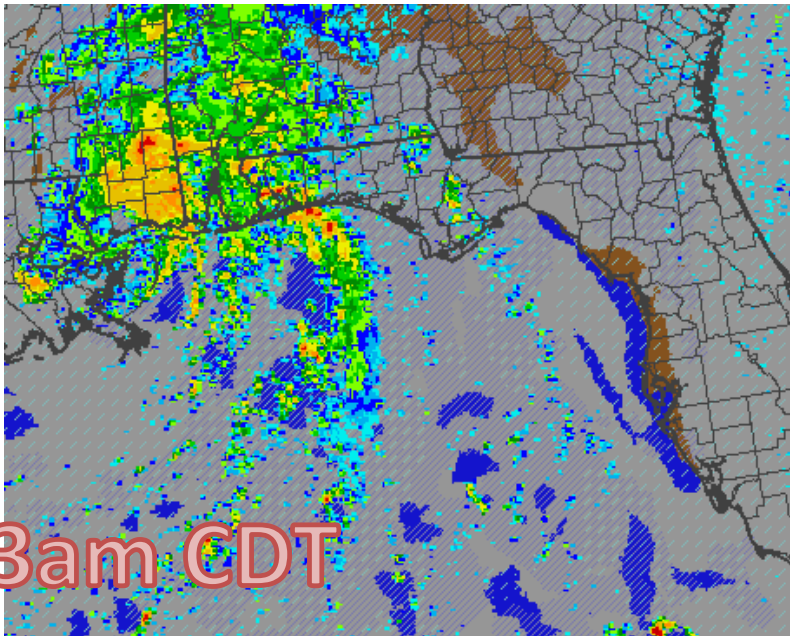
5pm CDT



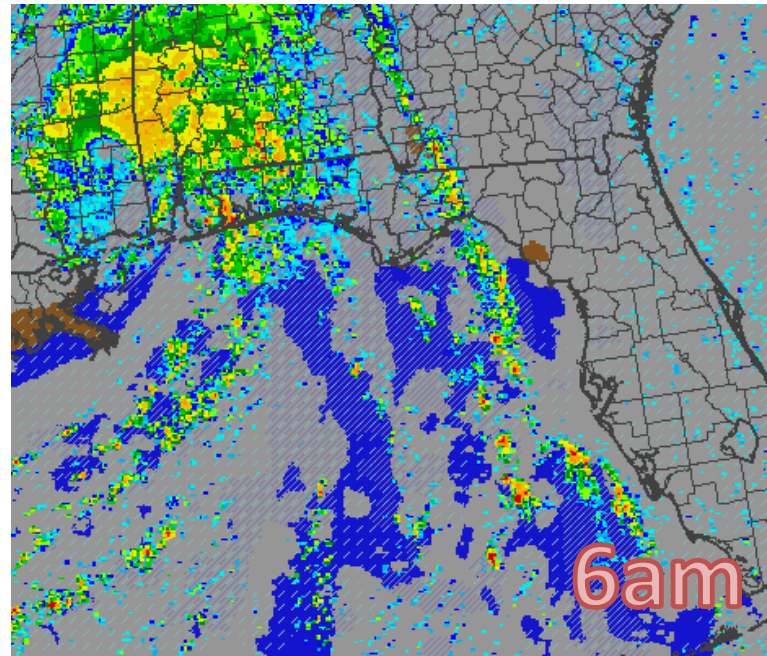
10pm CDT



3am CDT



6am CDT



Storm Surge Watch/Warning

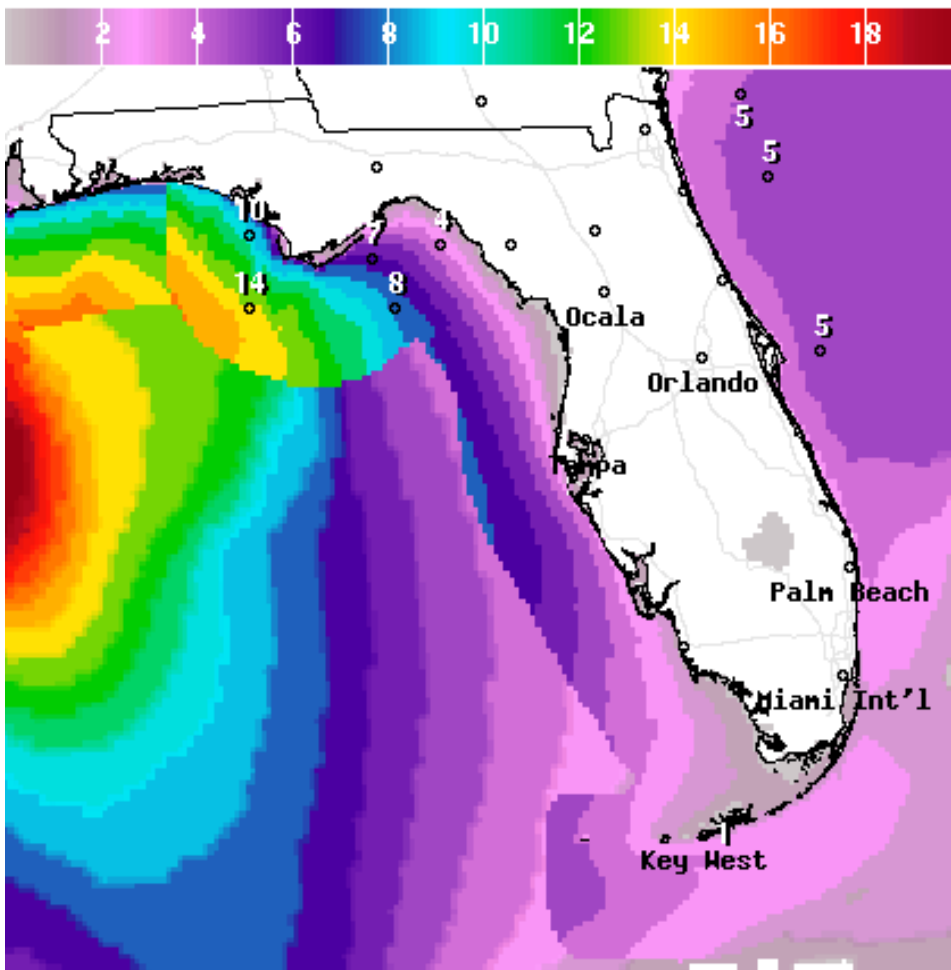


15 30mi

Storm Surge Warning

Storm Surge Watch

Forecast Wave Heights

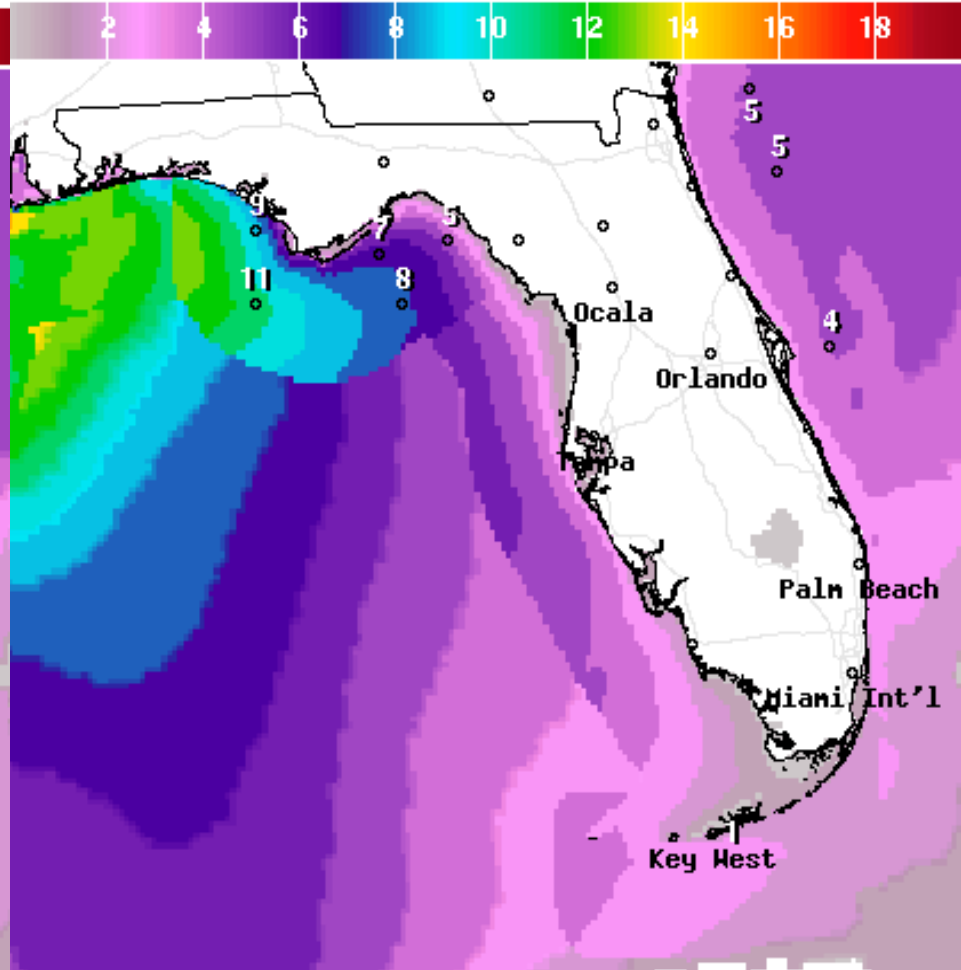


Wave Height(ft) Ending Sat Oct 07 2017 8PM EDT

(Sun Oct 08 2017 00Z)

National Digital Forecast Database

10z issuance Graphic created-Oct 07 6:50AM EDT



Wave Height(ft) Ending Sun Oct 08 2017 8AM EDT

(Sun Oct 08 2017 12Z)

National Digital Forecast Database

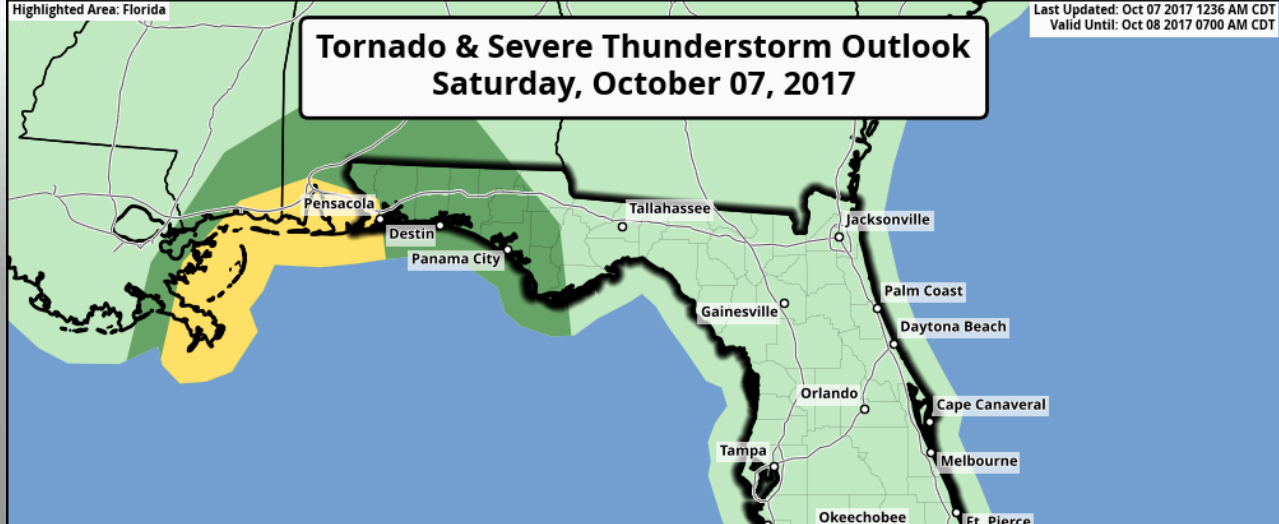
10z issuance Graphic created-Oct 07 6:50AM EDT



Highlighted Area: Florida

Tornado & Severe Thunderstorm Outlook Saturday, October 07, 2017

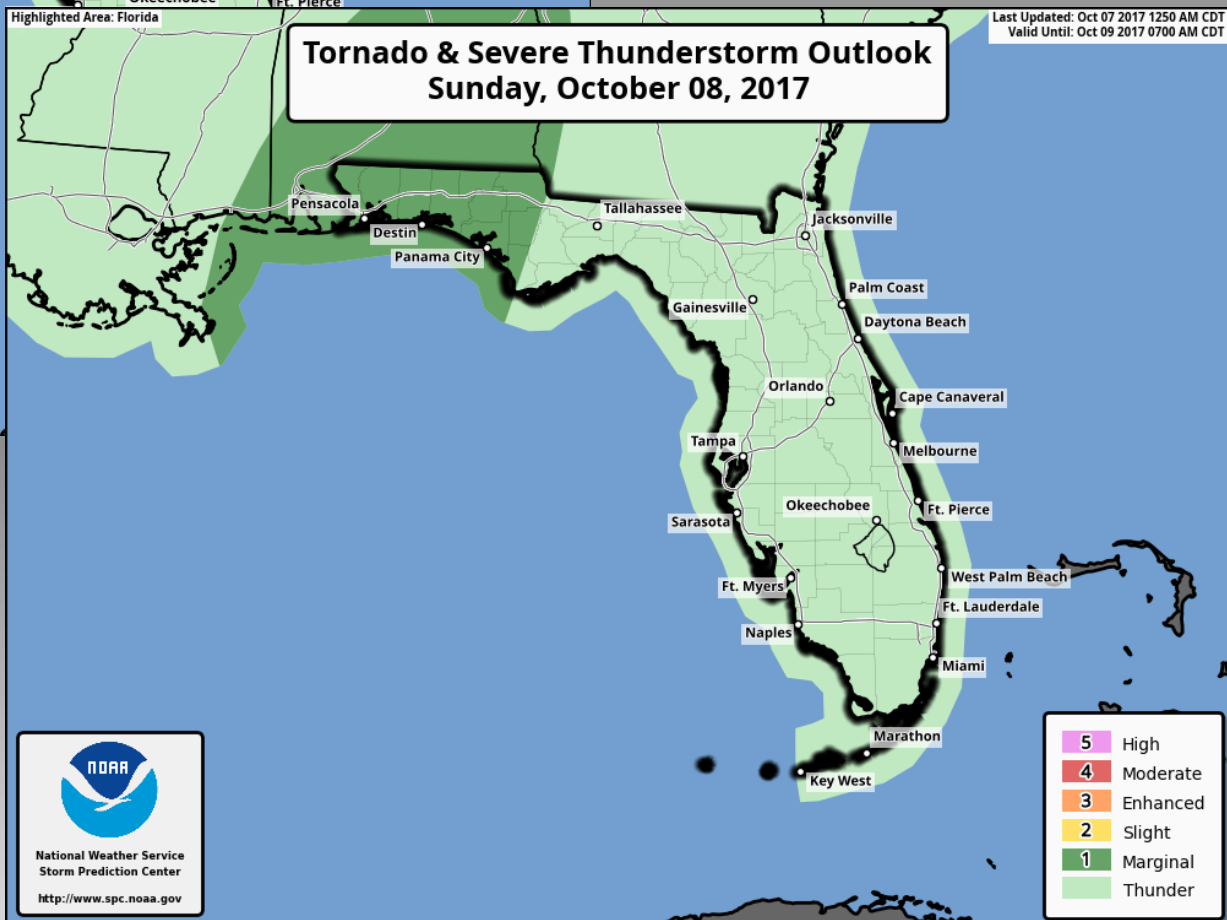
Last Updated: Oct 07 2017 1236 AM CDT
Valid Until: Oct 08 2017 0700 AM CDT



Highlighted Area: Florida

Tornado & Severe Thunderstorm Outlook Sunday, October 08, 2017

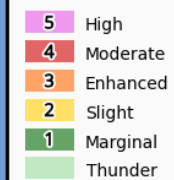
Last Updated: Oct 07 2017 1250 AM CDT
Valid Until: Oct 09 2017 0700 AM CDT



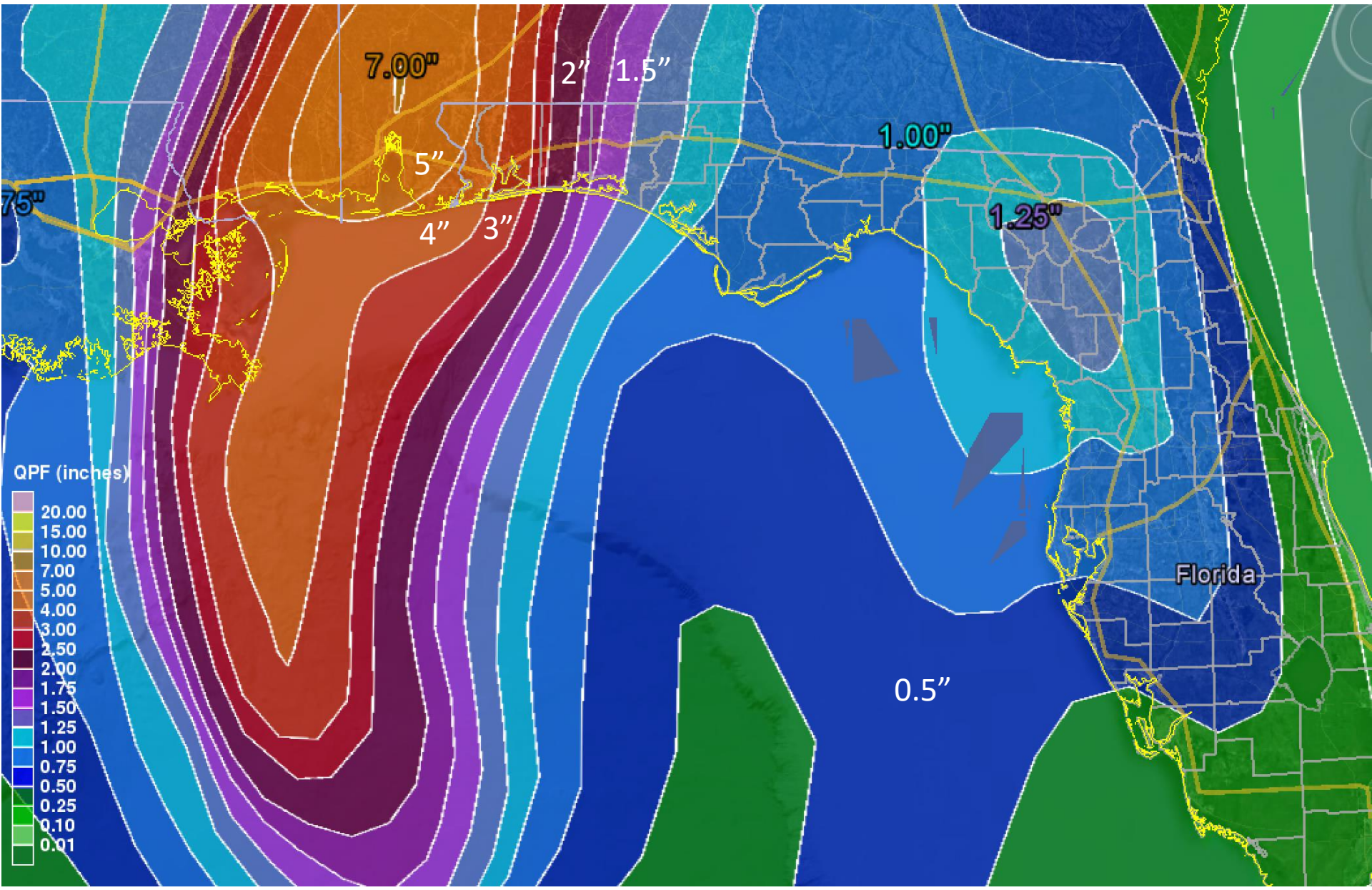
National Weather Service
Storm Prediction Center
<http://www.spc.noaa.gov>



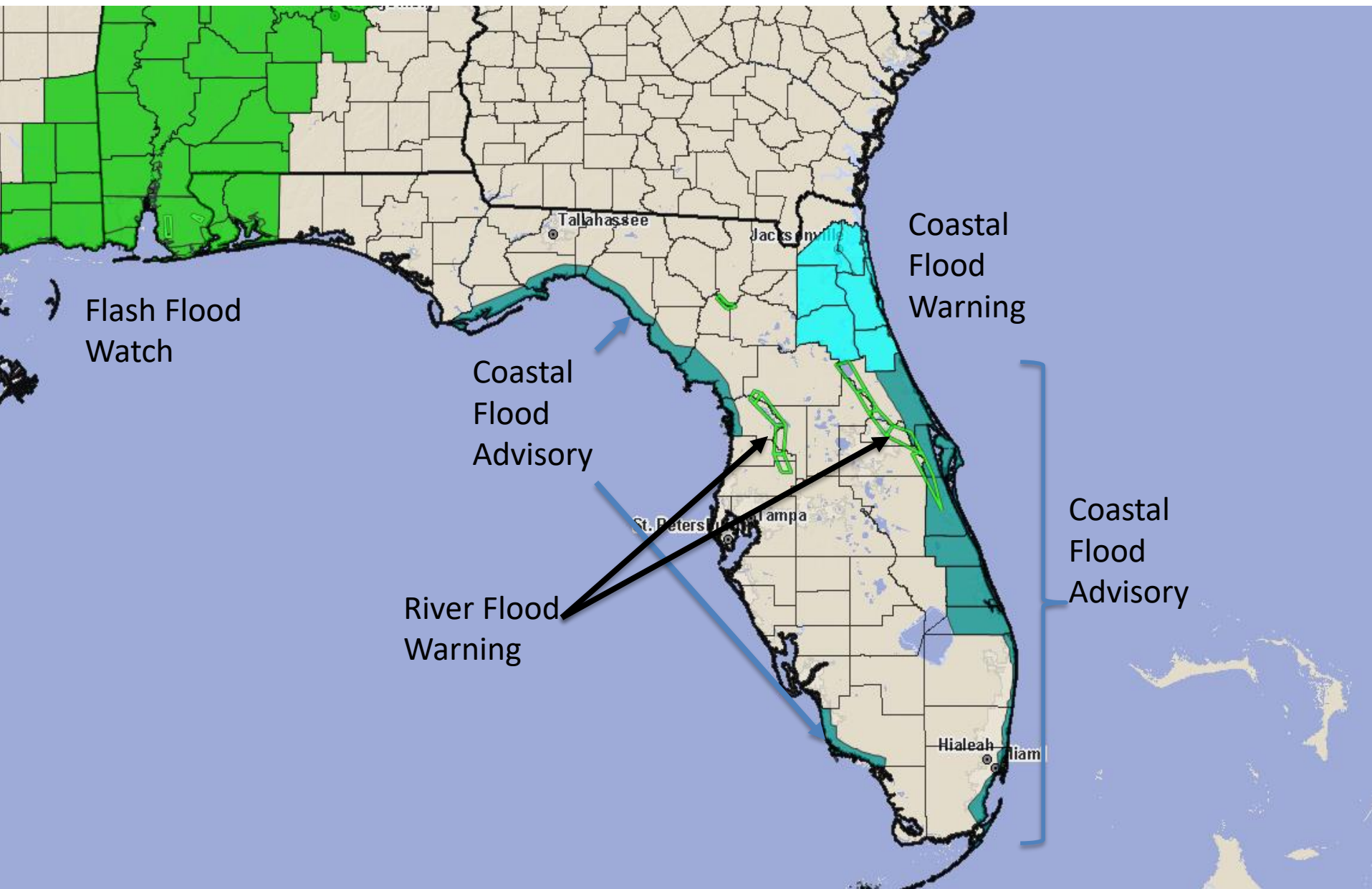
National Weather Service
Storm Prediction Center
<http://www.spc.noaa.gov>

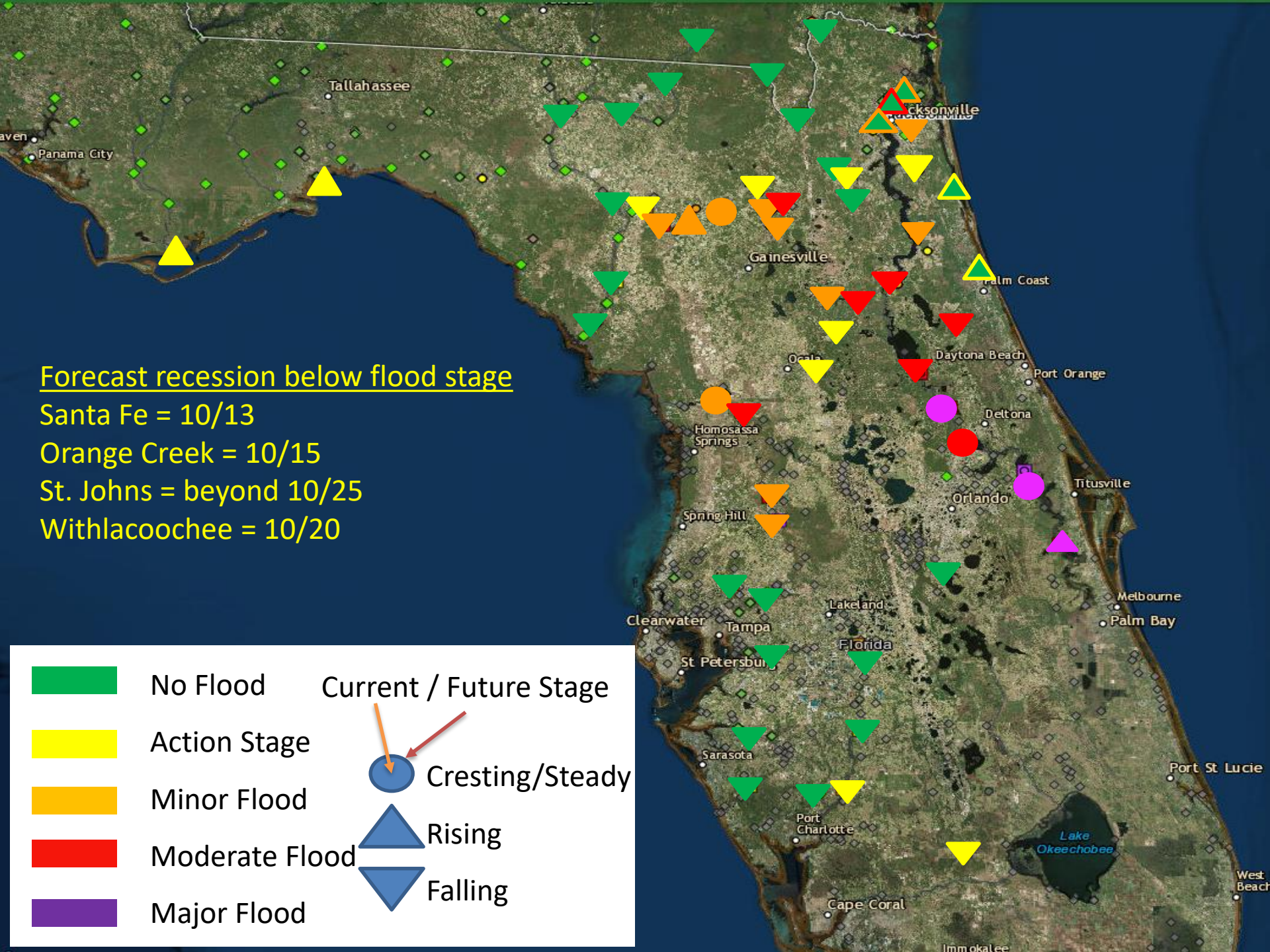


Forecast Total Rainfall – Next 3 Days



Active Flood Advisories











Forecast recession below flood stage

Santa Fe = 10/13

Orange Creek = 10/15

St. Johns = beyond 10/25

Withlacoochee = 10/20

	No Flood	<p>Current / Future Stage</p> 	
	Action Stage		
	Minor Flood		
	Moderate Flood		
	Major Flood		

Summary:

- At 10:30 pm EDT Friday, Nate became the 9th hurricane of the 2017 season.
- At 8am EDT Saturday, Hurricane Nate was located over the central Gulf of Mexico about 390 miles south of Pensacola, Florida.
- Nate is moving north-northwest near 22mph, and this general fast motion is expected to continue through tonight. A turn toward the north is forecast on Sunday morning, followed by a turn toward the north-northeast thereafter.
- The center of Nate is forecast to make landfall along the central U.S. Gulf Coast early Sunday morning.
- Maximum sustained winds have increased to 85mph and some additional strengthening is possible before Nate makes landfall along the northern Gulf coast. After landfall, weakening is anticipated and Nate is forecast to dissipate in 96 hours or sooner.
- Nate is a small storm. Hurricane-force winds extend outward up to 35 miles from the center and tropical-storm-force winds extend outward up to 125 miles.
- Elsewhere, an area of low pressure over the northeastern Atlantic is beginning to acquire some subtropical characteristics. Conditions are favorable for the development of a tropical or subtropical cyclone during the next day or so while the low drifts toward the southwest.
- The next name on the 2017 Atlantic storm list is Ophelia.

Florida Outlook:

- **Tropical Storm Warnings and Hurricane Watches** are in effect for Escambia, Santa Rosa and Okaloosa Counties.
- A **Tropical Storm Watch** remains in effect for Walton, Bay, Gulf, Holmes and Washington Counties.
- The chances for tropical storm force winds have increase to 50-90% for the western Florida Panhandle, a 20-50% chance for TS winds in the eastern Panhandle and a 10-20% chance for the Big Bend, which could arrive in gusts in the outer bands of Nate as early as this afternoon.
- Storm surge values could reach as high as 4-6' above normally dry ground in the western Panhandle, where **Storm Surge Warnings** are in effect. Storm surge values of 2-4' are possible along the eastern Panhandle coast between Walton and Gulf Counties where a **Storm Surge Watch** is in effect.
- In addition, breaking waves of 6-10' in the Panhandle and 3-8' in Apalachee Bay could cause minor coastal flooding and erosion. **Coastal Flood Advisories** are in effect from Franklin County to Citrus County.
- Rainfall amounts of 2-4" (with isolated amounts up to 6-8" possible) is forecast for portions of the Florida Panhandle and a **Flash Flood Watch** has been issued for Escambia, Santa Rosa and Okaloosa Counties.
- Isolated tornadoes will also be possible Saturday and Sunday in the Panhandle and Tornado Watches may be issued late today.
- Breezy winds and increasing ocean swells will continue a high risk of rip currents along the entire Gulf coast through this weekend.
- Breezy east winds combined with the lunar "King Tide" will continue to produce minor coastal flooding during high tide along the Florida East Coast. A **Coastal Flood Advisory** is in effect from Miami-Dade to Volusia County, with a **Coastal Flood Warning** in effect for the St. Johns River and tributaries through Saturday.

Another briefing packet will be issued Saturday afternoon. For more information, visit the NHC website at www.hurricanes.gov.



TROPICAL UPDATE

Created by:

Amy Godsey, Chief State Meteorologist

amy.godsey@em.myflorida.com

State Meteorological Support Unit

Florida Division of Emergency Management

Users wishing to subscribe (approval pending) to this distribution list, register at
https://public.govdelivery.com/accounts/FLDEM/subscriber/new?topic_id=SERT_Met_Tropics.

Other reports available for subscription are available at

<https://public.govdelivery.com/accounts/FLDEM/subscriber/new?preferences=true>