



TROPICAL UPDATE

5 PM EDT

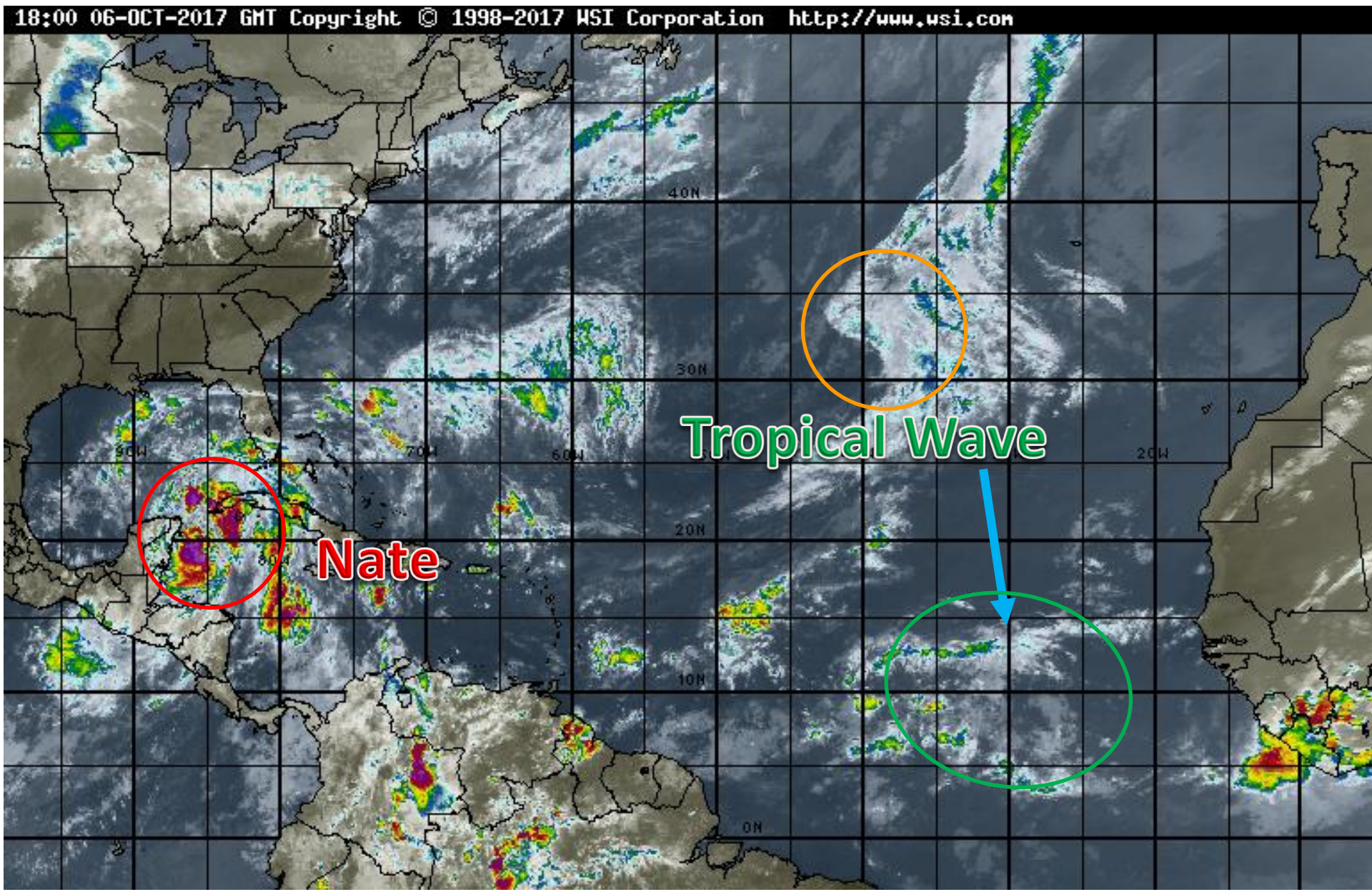
Friday, October 6, 2017

Tropical Storm Nate &

Northeast Atlantic Low (50%)

This update is intended for government and emergency response officials, and is provided for informational and situational awareness purposes only. Forecast conditions are subject to change based on a variety of environmental factors. For additional information, or for any life safety concerns with an active weather event please contact your County Emergency Management or Public Safety Office, local National Weather Service forecast office or visit the National Hurricane Center website at www.nhc.noaa.gov.

Atlantic Basin Satellite Image





Five-Day Graphical Tropical Weather Outlook

National Hurricane Center Miami, Florida



www.hurricanes.gov

All Disturbances

1



1. Satellite images indicate that a non-tropical area of low pressure has formed about 750 miles southwest of the Azores. Environmental conditions suggest the low will gradually acquire some tropical or subtropical characteristics, and a tropical or subtropical cyclone could form early next week. The low is forecast to drift over the northeastern Atlantic for the next several days.

* Formation chance through 48 hours...low...20 percent.

* Formation chance through 5 days...medium...50 percent.

2:00 pm EDT
Fri Oct 6 2017

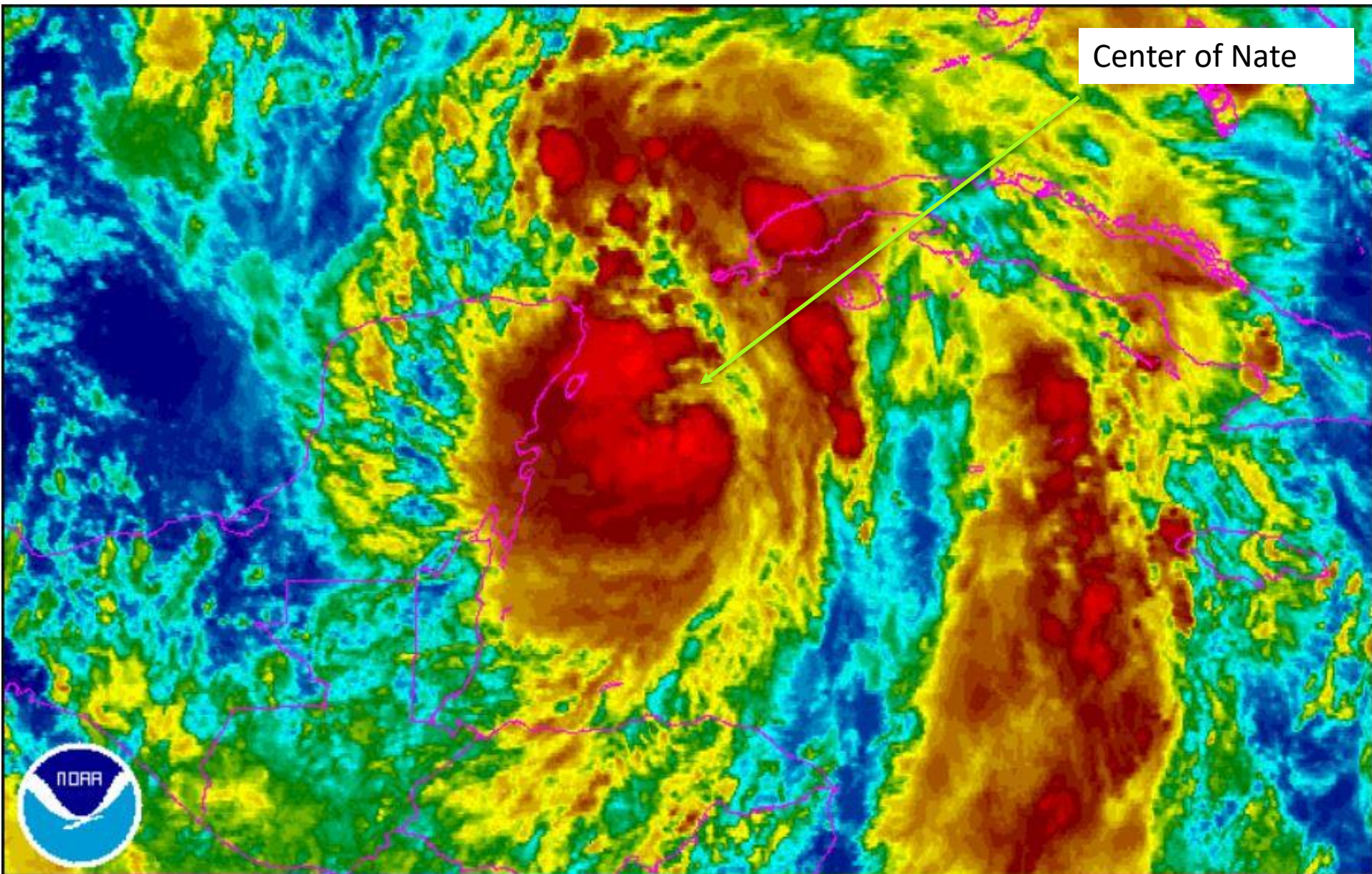
100°W 90°W 80°W 70°W 60°W 50°W 40°W 30°W 20°W

Current Disturbances and Five-Day Cyclone Formation Chance: ✖ < 40% ⚡ 40-60% ✖ > 60%

Tropical or Sub-Tropical Cyclone: ○ Depression ⚡ Storm ⚡ Hurricane

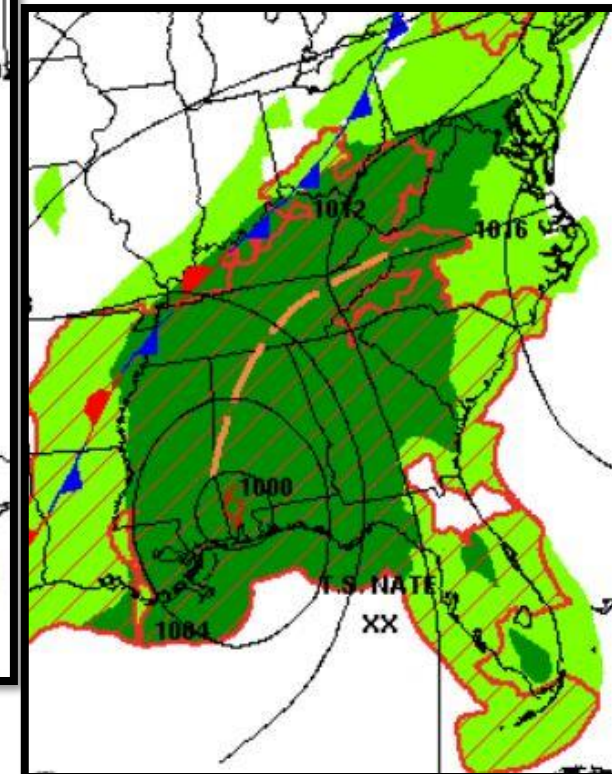
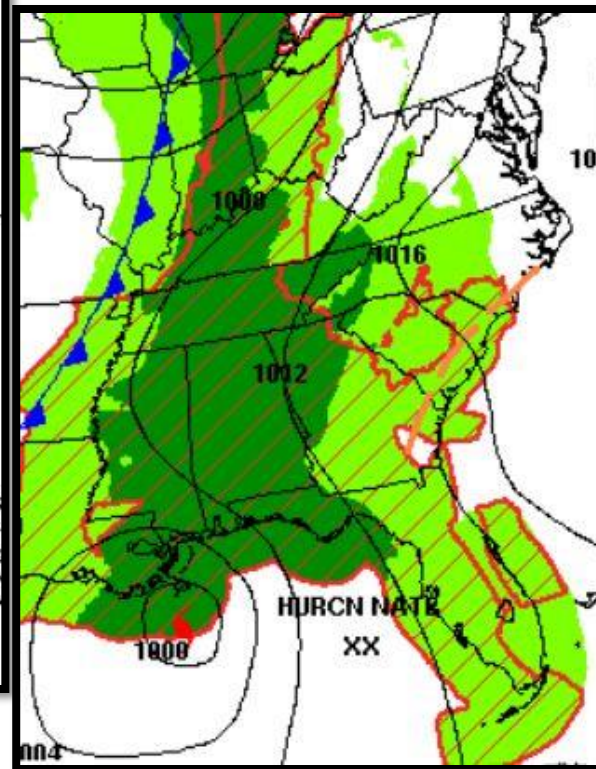
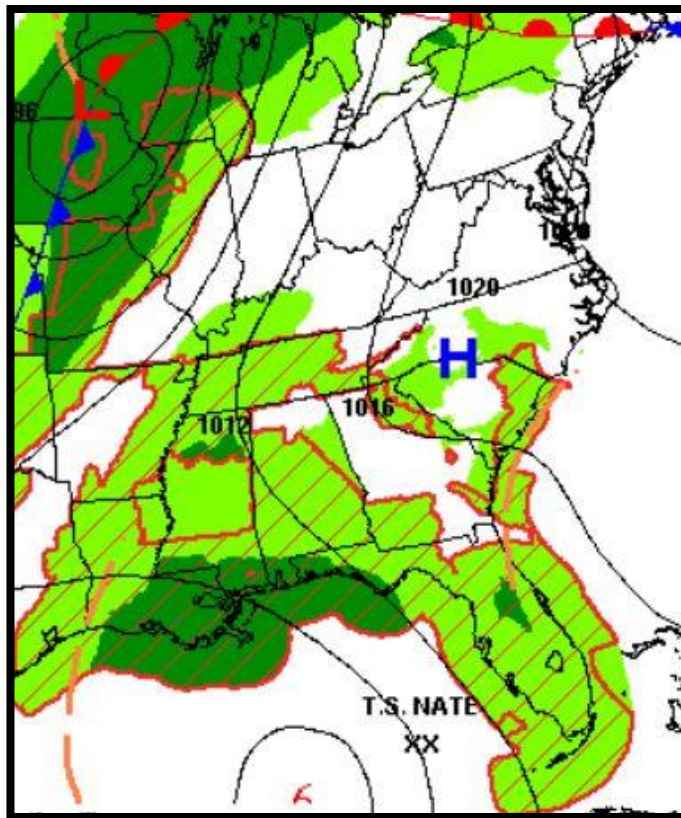
⊗ Post-Tropical Cyclone ✖ Remnants

Nate Satellite



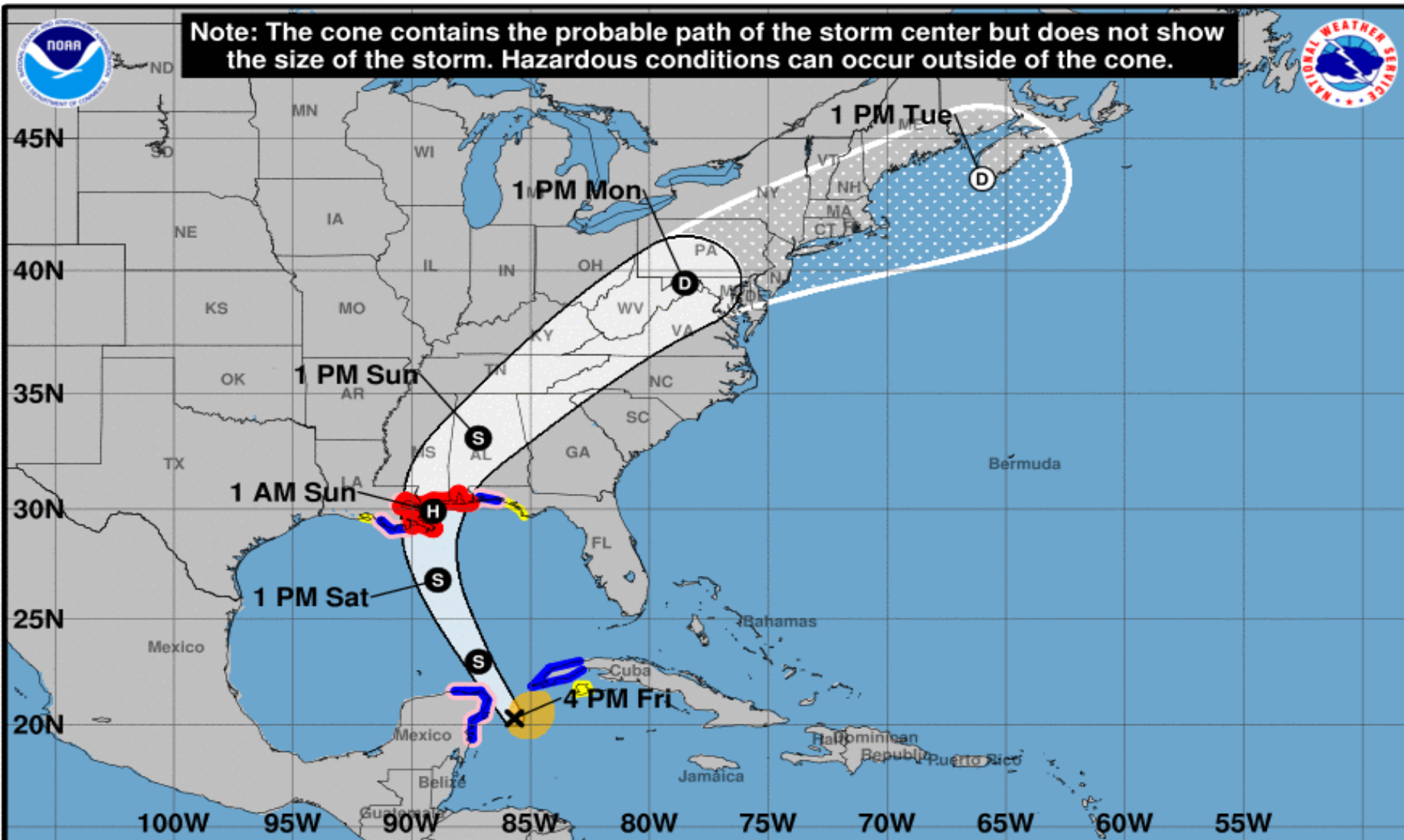
Forecast Weather Map – Saturday (left), Saturday night (center) and Sunday AM (right)

Nate is forecast to move in between high pressure off the New England coast and a cold front moving into the Ohio/Mississippi Valleys. The non-tropical low pressure system in the western Gulf will pull Nate north towards Louisiana before the front induces a northeast turn.





Note: The cone contains the probable path of the storm center but does not show the size of the storm. Hazardous conditions can occur outside of the cone.



Tropical Storm Nate

Friday October 06, 2017

4 PM CDT Advisory 10

NWS National Hurricane Center

Current information: x

Center location 20.3 N 85.7 W

Maximum sustained wind 60 mph

Movement NNW at 21 mph

Forecast positions:

● Tropical Cyclone ○ Post/Potential TC

Sustained winds: D < 39 mph

S 39-73 mph H 74-110 mph M > 110 mph

Potential track area:

Day 1-3 Day 4-5

Watches:

Hurricane Trop Stm

Warnings:

Hurricane Trop Stm

Current wind extent:

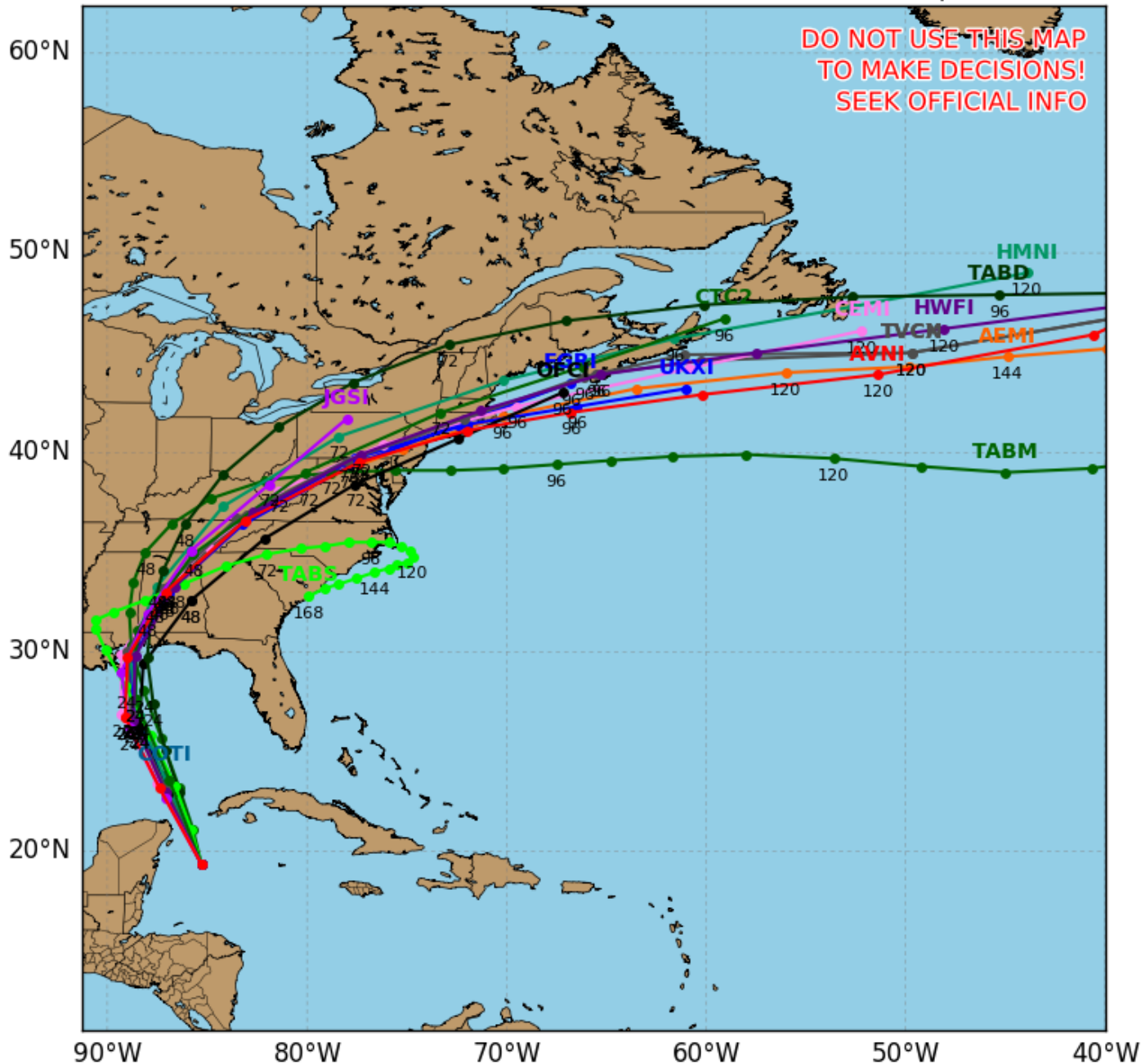
Hurricane Trop Stm

Tropical Storm NATE Model Track Guidance

Initialized at 18z Oct 06 2017

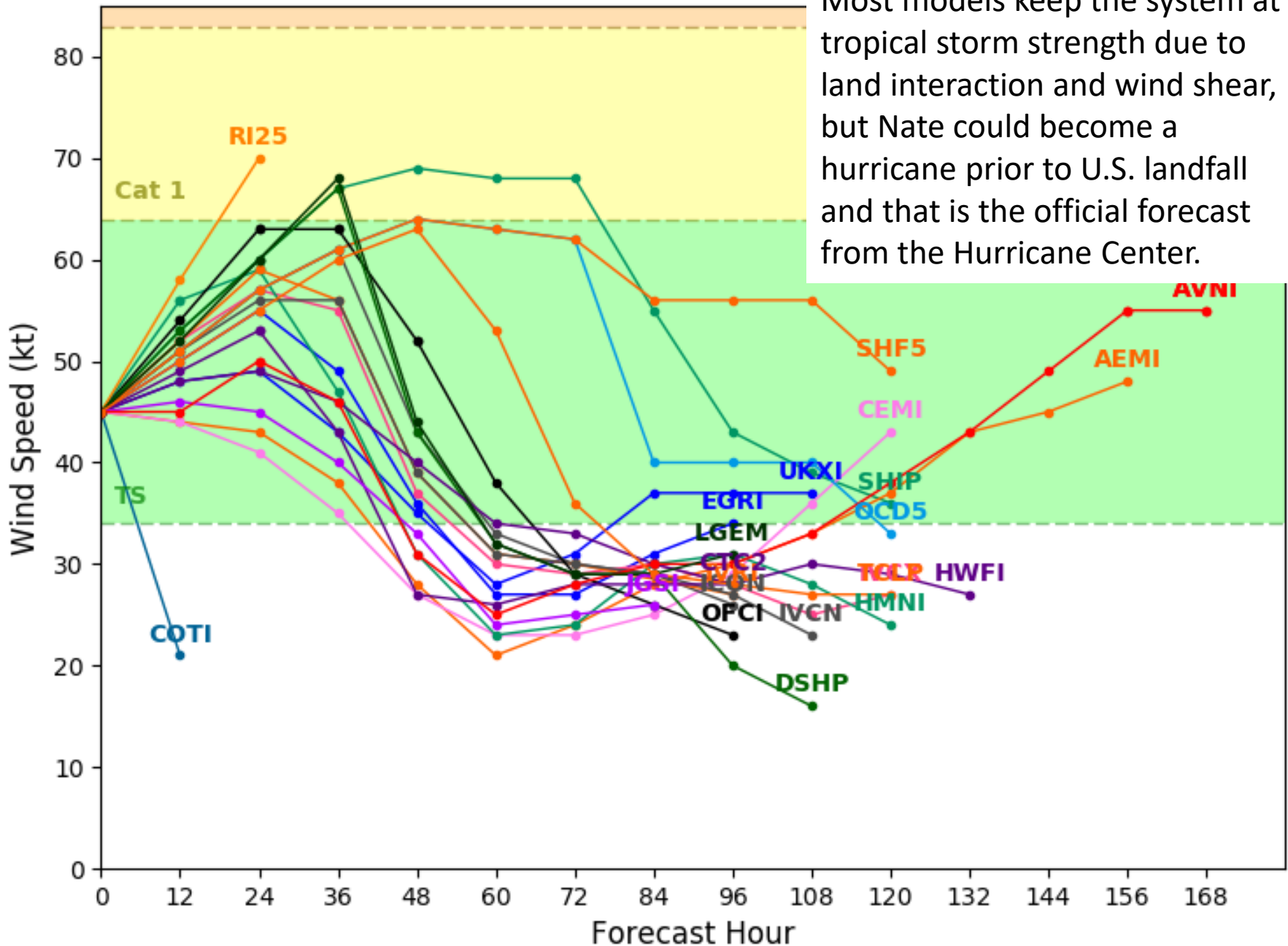
Levi Cowan - tropica1t1d1b1t1s.com

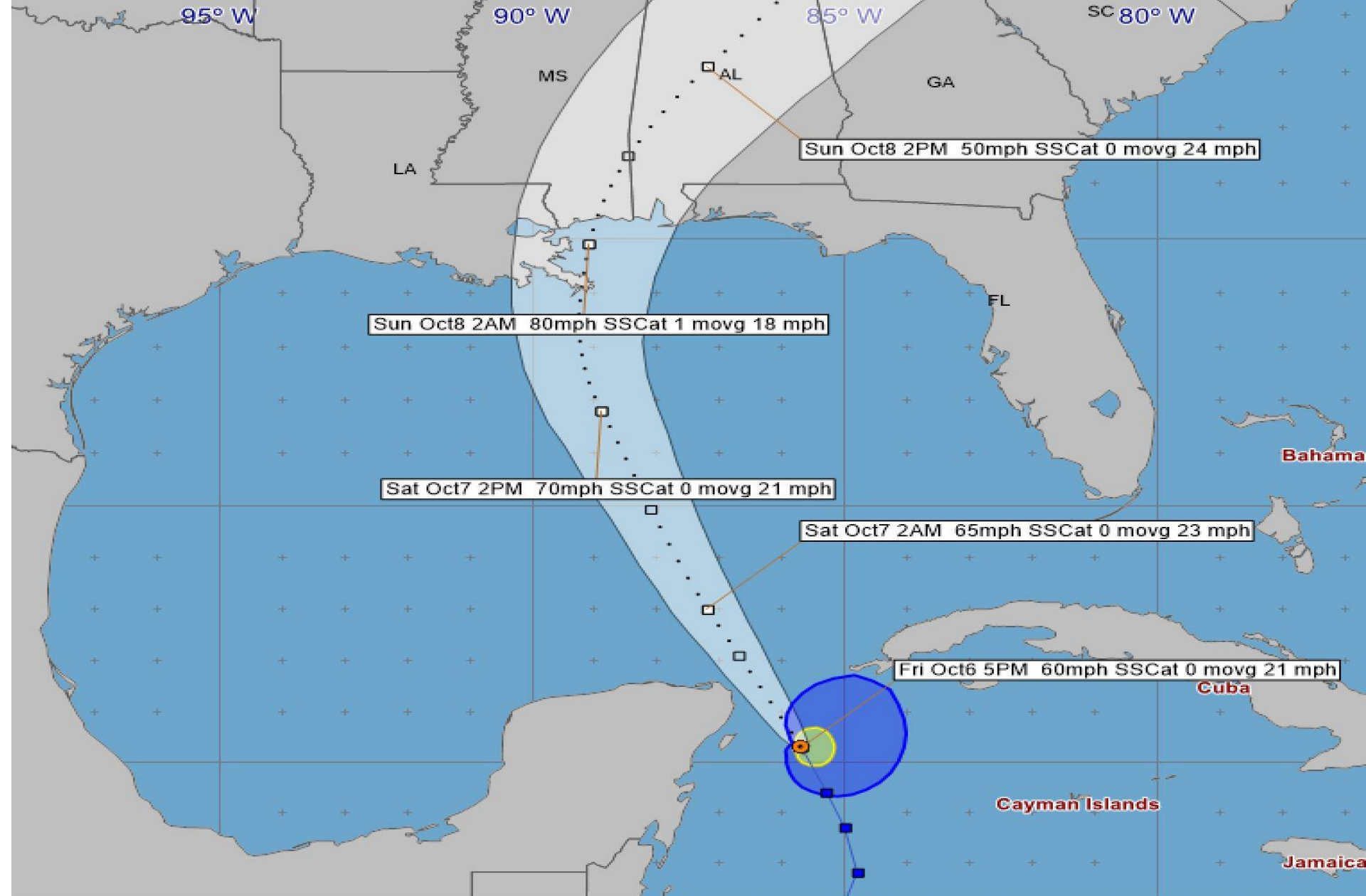
DO NOT USE THIS MAP
TO MAKE DECISIONS!
SEEK OFFICIAL INFO



Model guidance remained nearly the same today. The range of possibilities for landfall is between Mobile, AL and southeast Louisiana.

Initialized at 18z Oct 06 2017





Tropical Storm Nate - Friday, October 6, 2017 5 PM EDT Advisory #10

Center Location: 20.3 N 85.7 W Maximum Sustained Winds: 60 mph Movement: 21 mph NNW

□ forecast positions

Potential Track Area:



day 1-3



day 4-5

Surface Wind Field:



at current location

Sustained Wind Speeds: ■ tropical storm ≥ 34 kt/39mph

■ strong tropical storm ≥ 50 kt/58mph

■ hurricane ≥ 64 kt/74mph

TROPICAL ALERTS

**HURRICANE
WARNING**

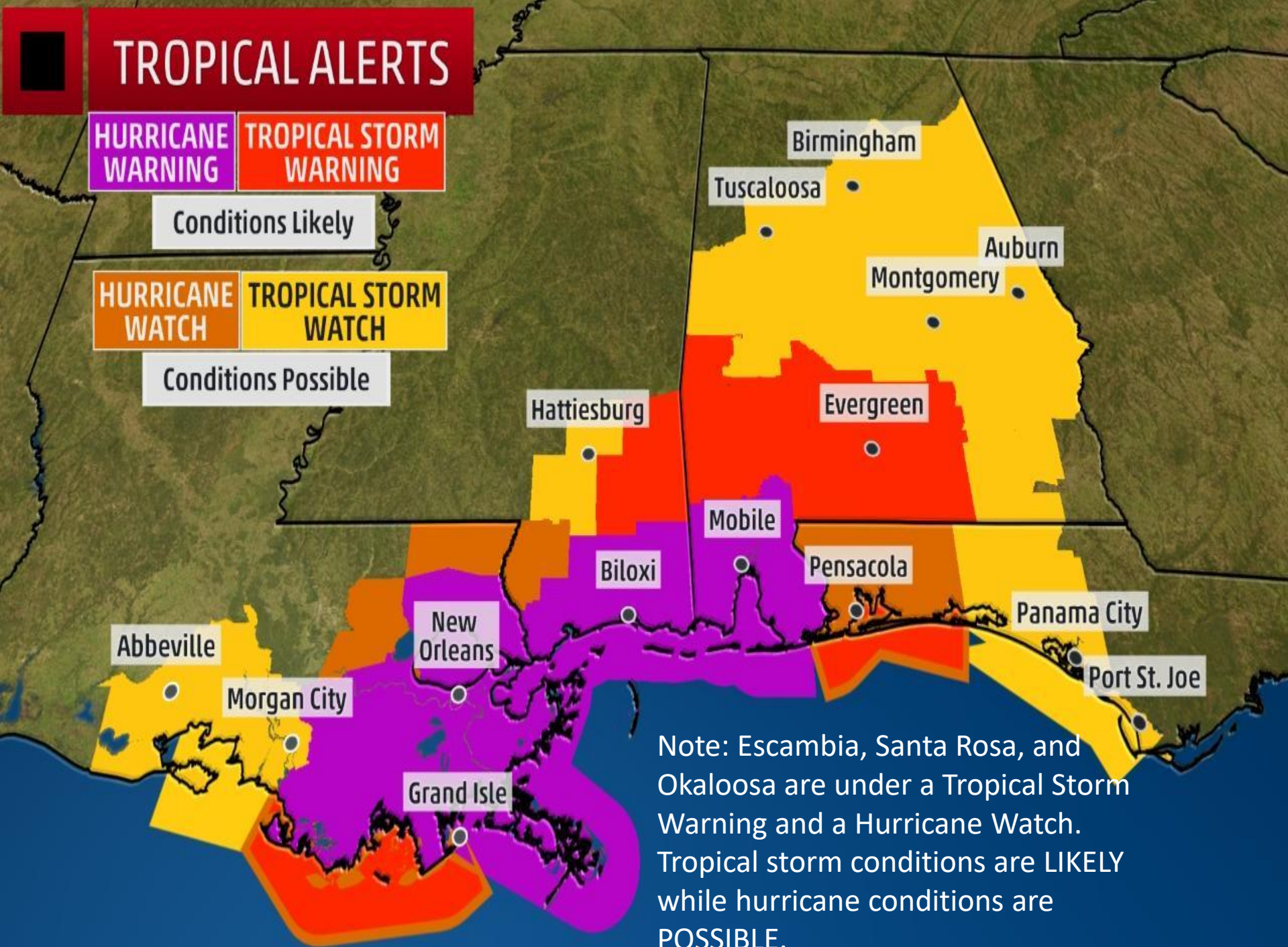
**TROPICAL STORM
WARNING**

Conditions Likely

**HURRICANE
WATCH**

**TROPICAL STORM
WATCH**

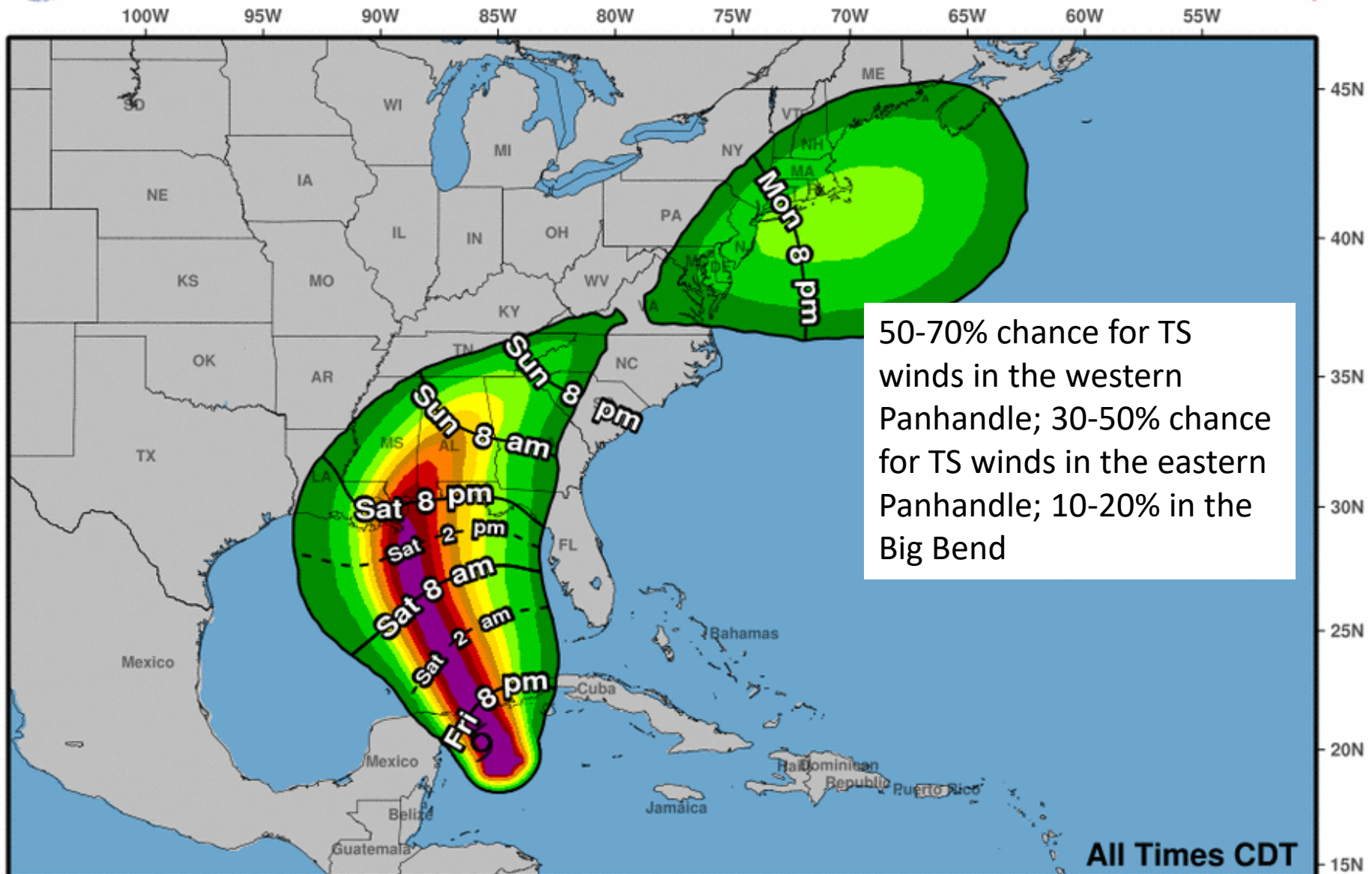
Conditions Possible



Note: Escambia, Santa Rosa, and Okaloosa are under a Tropical Storm Warning and a Hurricane Watch. Tropical storm conditions are **LIKELY** while hurricane conditions are **POSSIBLE**.



Most Likely Arrival Time of Tropical-Storm-Force Winds



Tropical Storm Nate
Fri. Oct. 6, 2017 4 pm CDT
Advisory 10

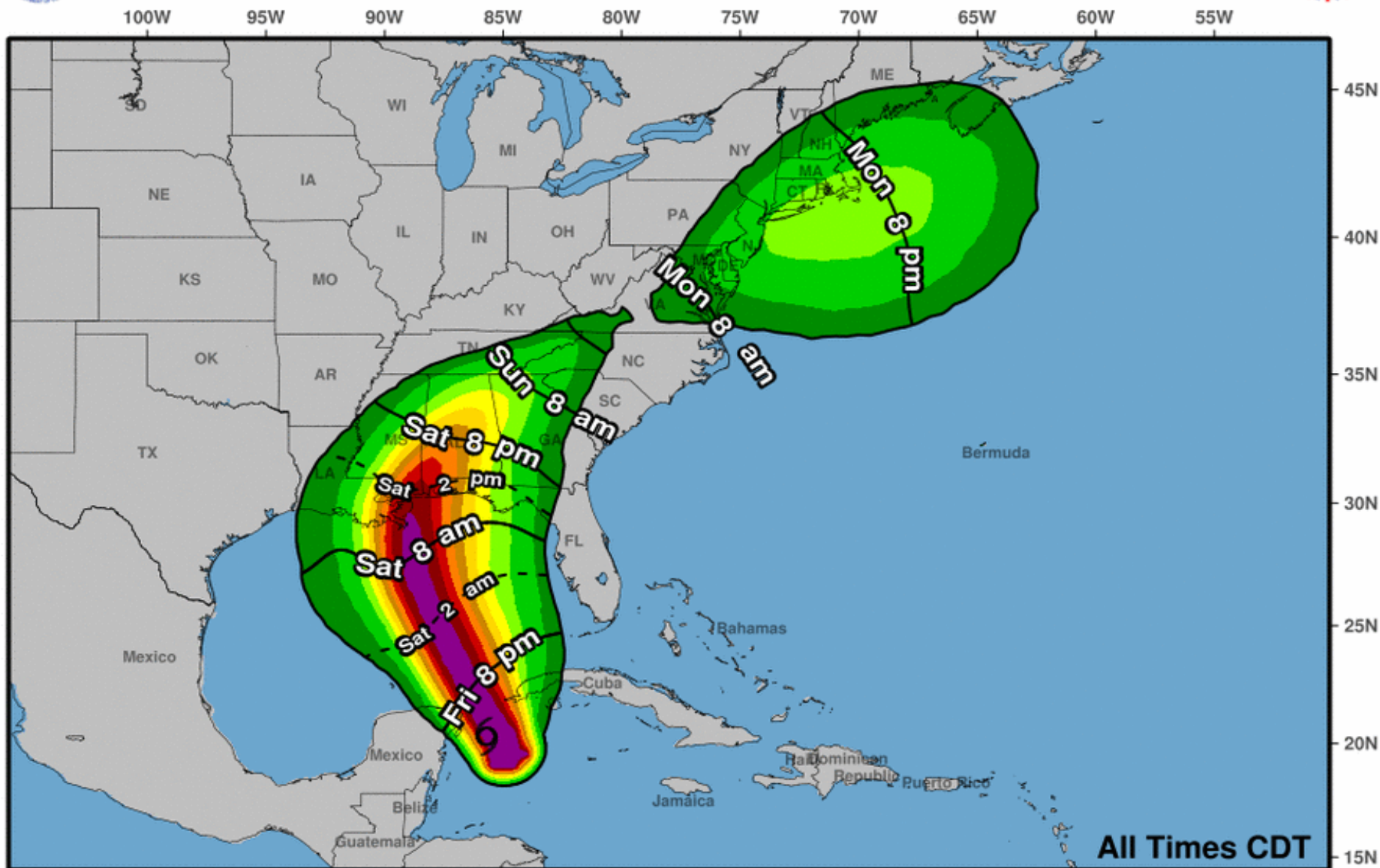
**Storm Location &
Wind Speed (knots)**
○ <34 ◐ 34-63 ◑ ≥64

Five-day chance of receiving sustained 34+ knot (39+ mph) winds





Earliest Reasonable Arrival Time of Tropical-Storm-Force Winds



Tropical Storm Nate
Fri. Oct. 6, 2017 4 pm CDT
Advisory 10

**Storm Location &
Wind Speed (knots)**
○ <34 ◐ 34-63 ● ≥64

Five-day chance of receiving sustained 34+ knot (39+ mph) winds



Future Radar

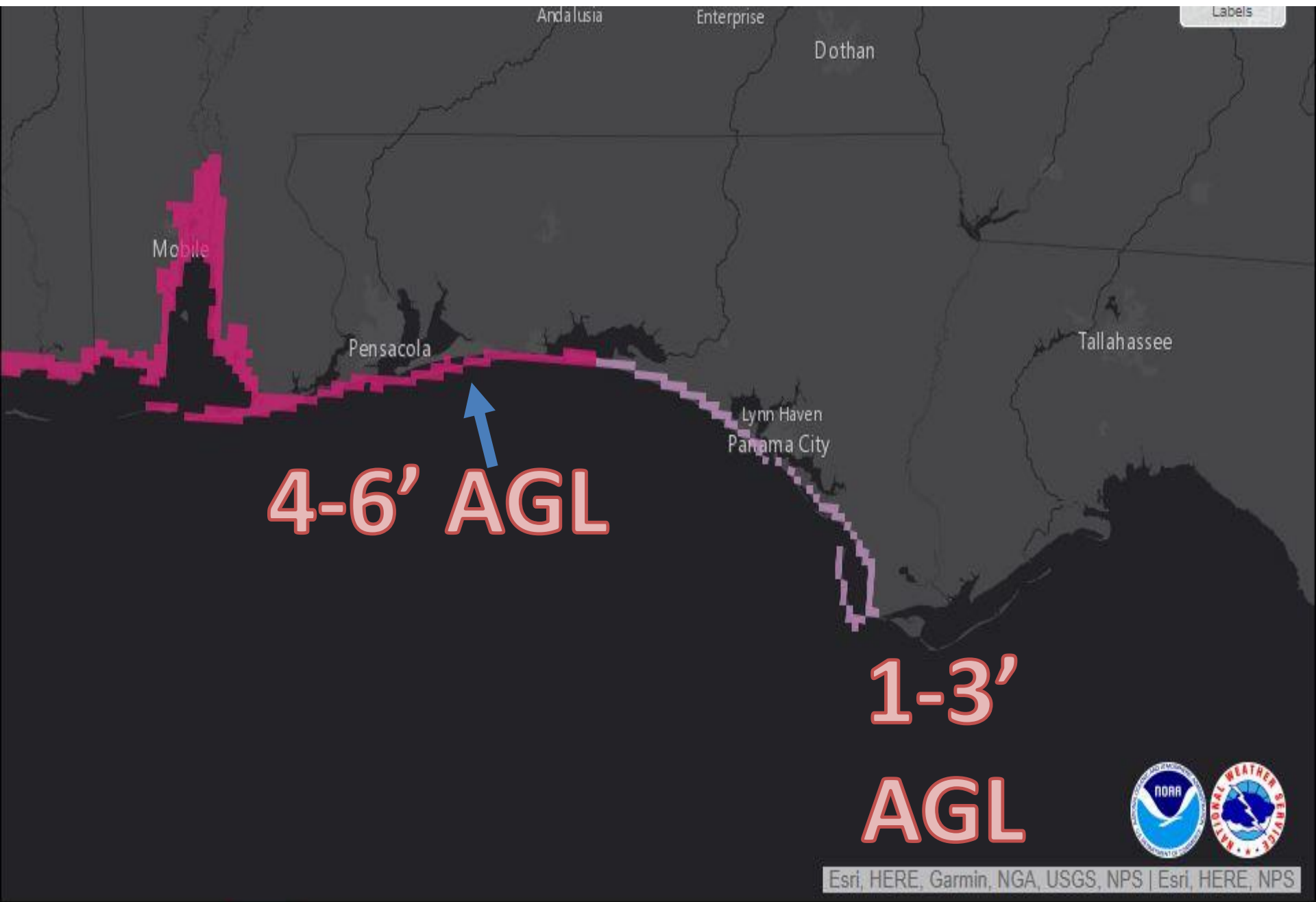
3pm CDT Saturday

Outer rain bands from Nate could reach Florida as early as Saturday afternoon, depending on the forward speed of the storm. Conditions will improve during the afternoon on Sunday.

Note: These are model simulations and subject to change.

1am CDT Sunday

7am CDT Sunday

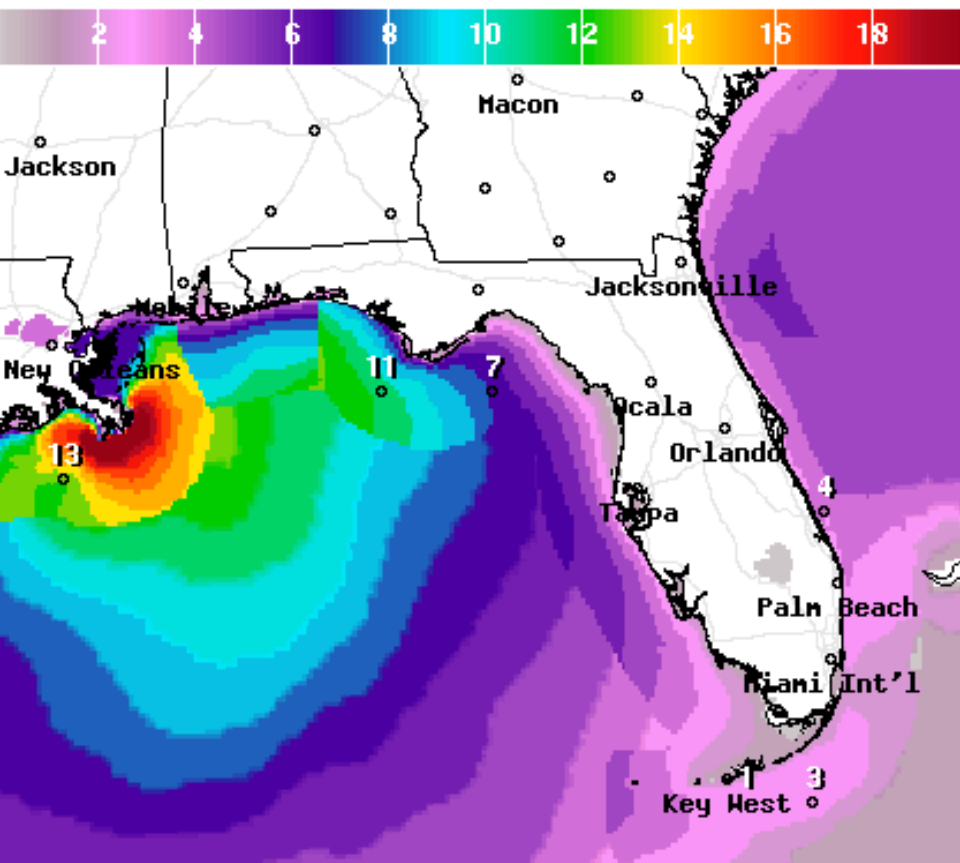


Storm Surge Warning

Storm Surge Watch

Forecast Wave Heights

Saturday Night & Sunday AM



Wave Height(ft) Ending Sun Oct 08 2017 2AM EDT

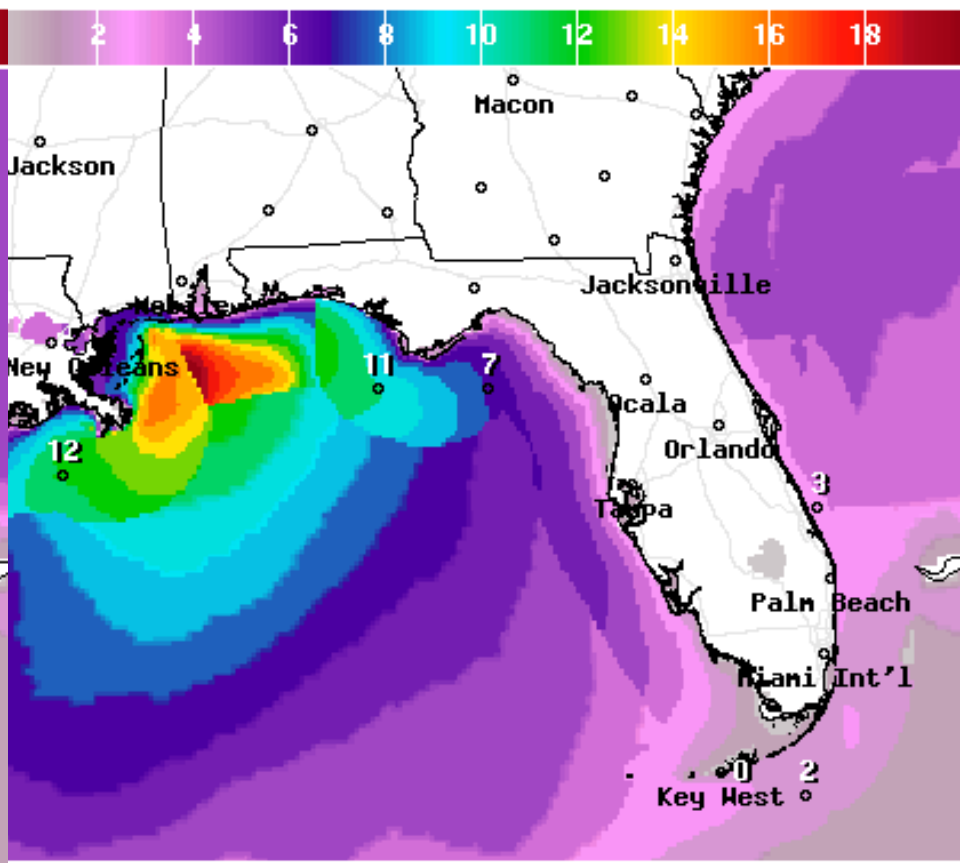
(Sun Oct 08 2017 06Z)



National Digital Forecast Database

20z issuance

Graphic created-Oct 06 4:42PM EDT



Wave Height(ft) Ending Sun Oct 08 2017 8AM EDT

(Sun Oct 08 2017 12Z)



National Digital Forecast Database

20z issuance

Graphic created-Oct 06 4:42PM EDT



Tornado & Severe Thunderstorm Outlook Saturday, October 07, 2017

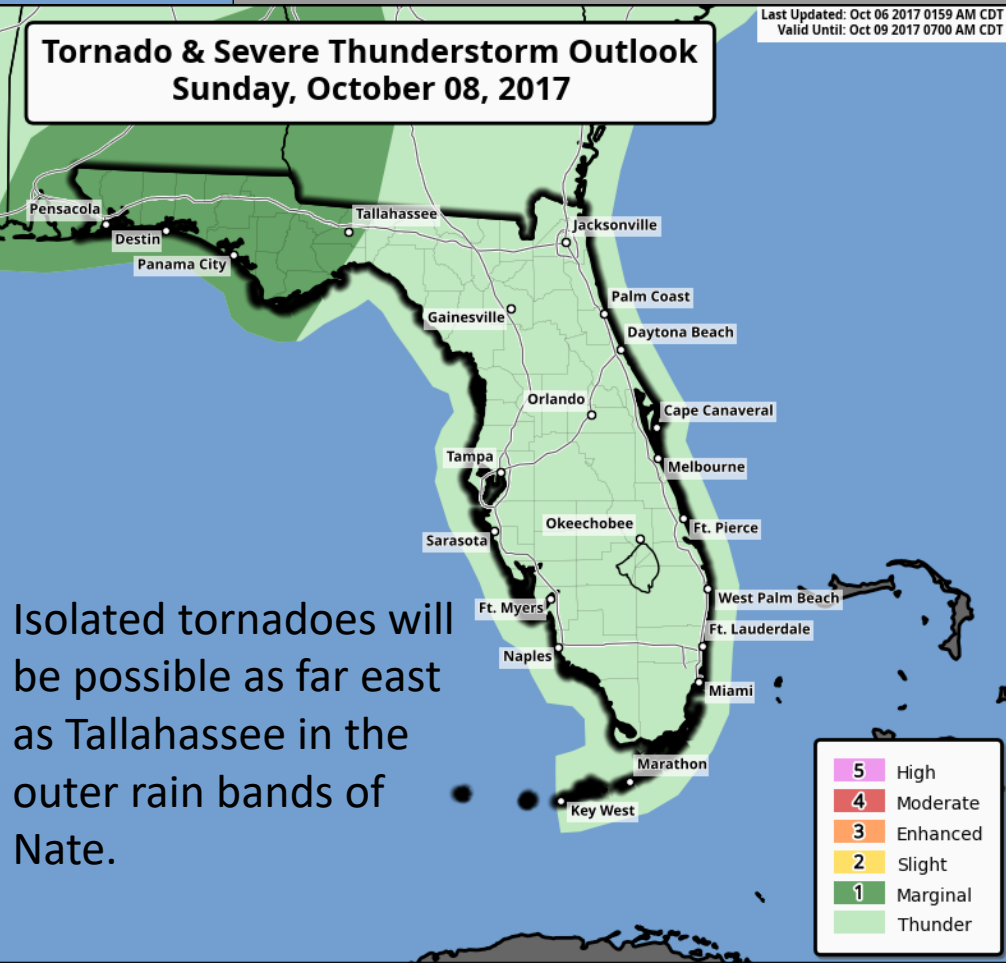
Last Updated: Oct 06 2017 1148 AM CDT
Valid Until: Oct 08 2017 0700 AM CDT



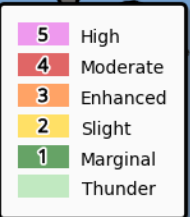
The first outer rain bands may arrive as early as tomorrow afternoon with an isolated tornado threat.

Tornado & Severe Thunderstorm Outlook Sunday, October 08, 2017

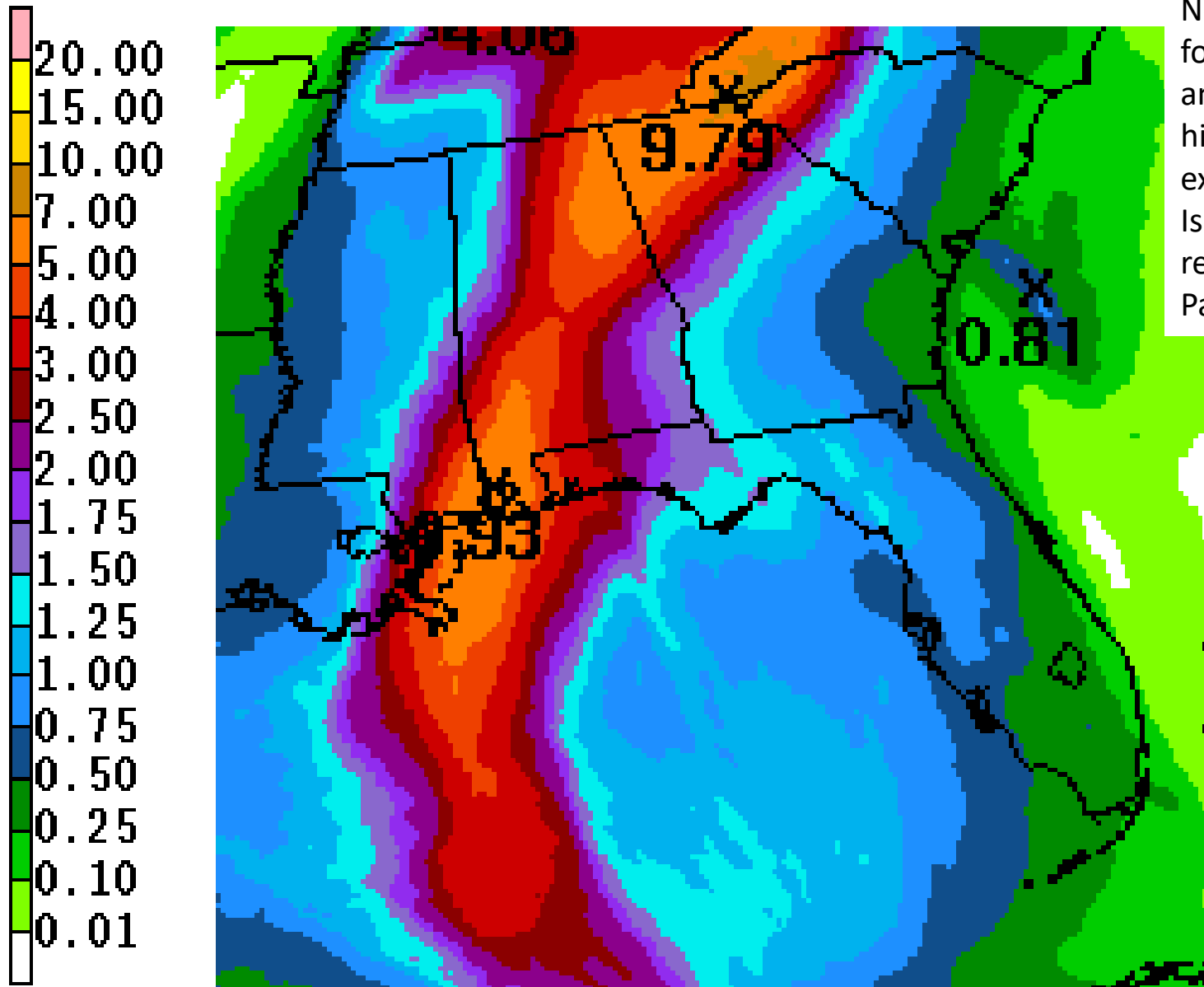
Last Updated: Oct 06 2017 0159 AM CDT
Valid Until: Oct 09 2017 0700 AM CDT



Isolated tornadoes will be possible as far east as Tallahassee in the outer rain bands of Nate.



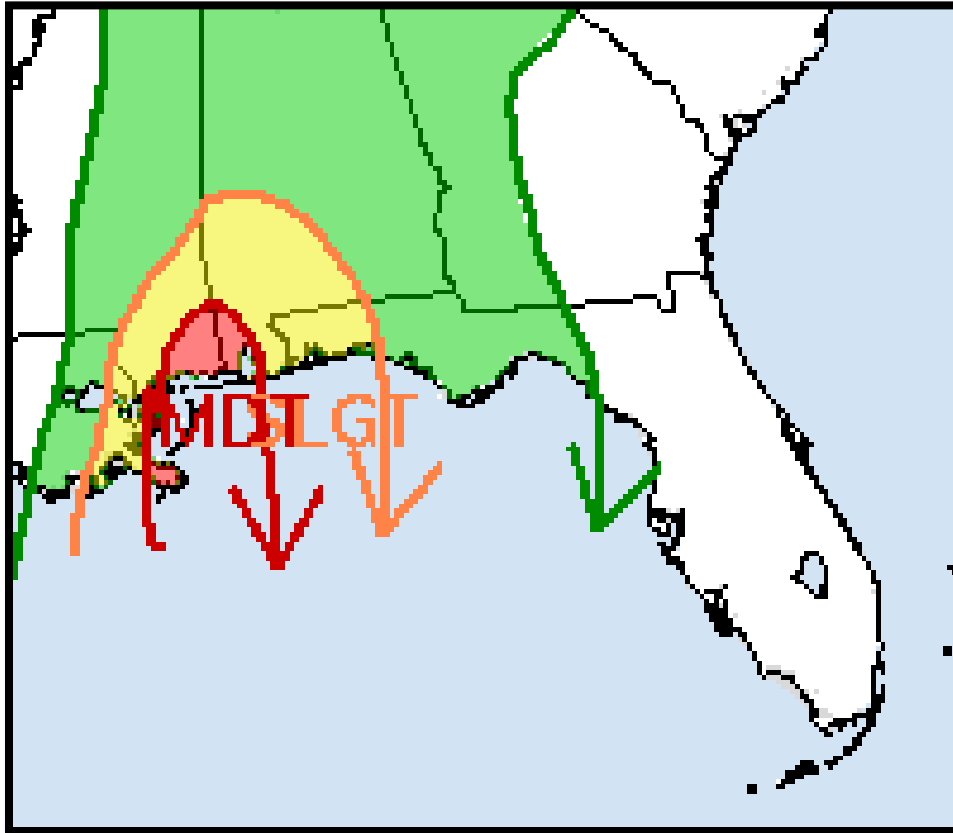
Forecast Total Rainfall – Next 3 Days



Note: Does not account for locally higher amounts, which could be higher depending on exact track of Nate. Isolated totals could reach 4-8" in the western Panhandle.

Flash Flood Threat

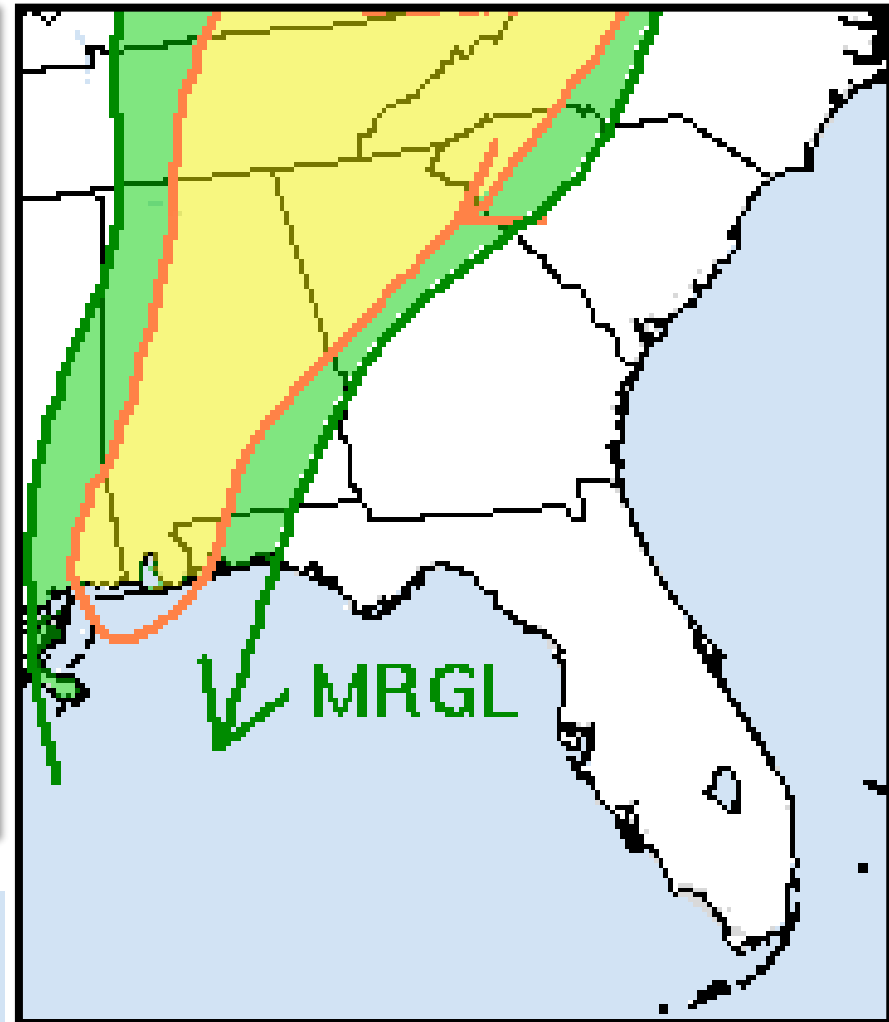
Saturday



Risk of rainfall exceeding flash flood guidance to the right of a line

| | |
|-----------------------|---------------------|
| HIGH: > 15% | SLGT: 5%-10% |
| MDT: 10%-15% | MRGL: 2%-5% |

Sunday



****Flash Flood Watch for Escambia and Santa Rosa County****

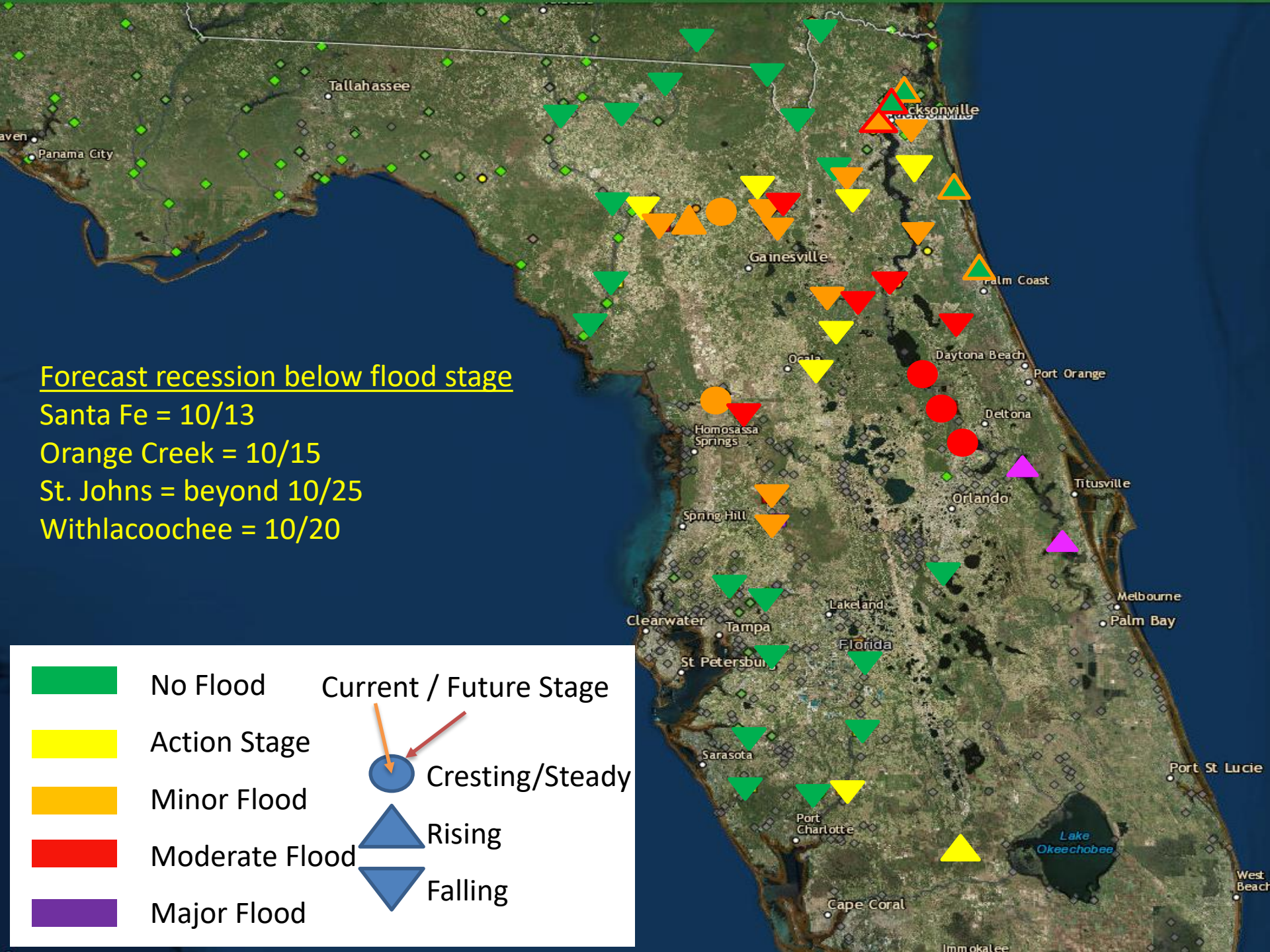
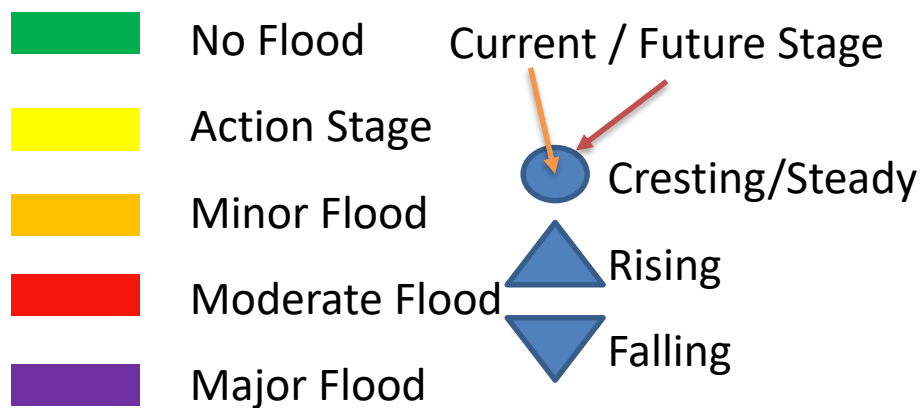
Forecast recession below flood stage

Santa Fe = 10/13

Orange Creek = 10/15

St. Johns = beyond 10/25

Withlacoochee = 10/20



Summary:

- At 5 PM EDT Friday, Tropical Storm Nate was located over the northwestern Caribbean Sea, or about 650 miles south of Apalachicola, Florida.
- Nate is now moving north-northwest near 21mph, and this motion is expected to continue during the next couple of days with a further increase in forward speed.
- The center of Nate is forecast to emerge into the southern Gulf of Mexico late tonight and make landfall along the U.S. Gulf Coast very early Sunday morning.
- Maximum sustained winds are currently near 60mph and Nate is expected to gradually strengthen, becoming a hurricane in the Gulf of Mexico before landfall.
- Computer models are in good agreement on track and confidence is high on a landfall between far southeast Louisiana and Mobile, AL as a strong tropical storm or minimal hurricane.
- Elsewhere, an area of low pressure over the northeastern Atlantic could acquire some subtropical or tropical characteristics early next week while it remains nearly stationary. Odds for development over the next five days are at 50% (medium).

Florida Outlook:

- The chances for tropical storm force winds have increased to 50-70% for much of the western Florida Panhandle and 30-50% for the eastern Panhandle, which could arrive in gusts in the outer bands of Nate as early as tomorrow afternoon.
- A **Tropical Storm Warning and Hurricane Watch** have been issued for Escambia, Santa Rosa and Okaloosa Counties.
- A Tropical Storm Watch is in effect for Walton, Bay, Holmes, Washington, and coastal Gulf Counties.
- **Storm Surge Warnings** are in effect from Escambia to Okaloosa, and Storm Surge Watches from Walton to Gulf. Storm surge heights may be as high as 4-6' in the western Panhandle and 1-3' through Apalachee Bay in the Big Bend.
- Rainfall amounts of 4-6" (with isolated amounts up to 8" possible) is forecast for portions of the western Panhandle on Saturday and Sunday. Flash Flood Watches are in effect for Escambia and Santa Rosa Counties. Lesser amounts east.
- Isolated tornadoes will also be possible Saturday and Sunday in the Panhandle and western Big Bend.
- Breezy winds and increasing ocean swells will continue a high risk of rip currents along the entire Panhandle coast through this weekend. Wave heights may be as high as 10' along the coast tomorrow night.
- Breezy east winds combined with the lunar "King Tide" will continue to produce minor coastal flooding during high tide along the Florida East Coast. A **Coastal Flood Advisory** is in effect from Monroe to Volusia County, with a **Coastal Flood Warning** in effect for the St. Johns River and its tributaries through tomorrow.

Another briefing packet will be issued Saturday morning. For more information, visit the NHC website at www.hurricanes.gov.



TROPICAL UPDATE

Created by:

Michael Spagnolo, Deputy State Meteorologist
michael.spagnolo@em.myflorida.com

State Meteorological Support Unit

Florida Division of Emergency Management

Users wishing to subscribe (approval pending) to this distribution list, register at
https://public.govdelivery.com/accounts/FLDEM/subscriber/new?topic_id=SERT_Met_Tropics.

Other reports available for subscription are available at
<https://public.govdelivery.com/accounts/FLDEM/subscriber/new?preferences=true>