



# **TROPICAL UPDATE**

**4 PM EDT**

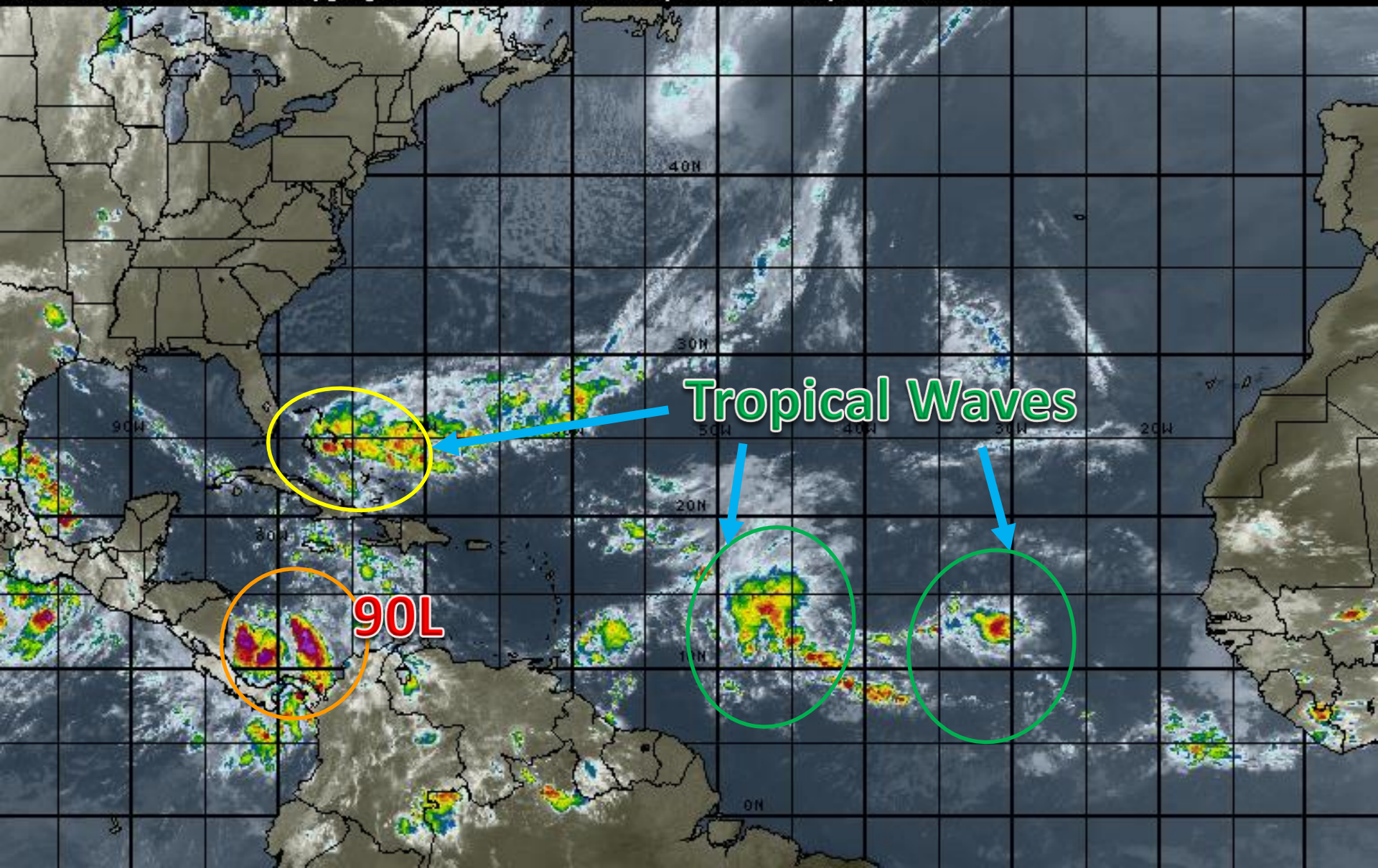
**Tuesday, October 3, 2017**

**Caribbean Disturbance Invest 90L (60%) &  
Bahamas Disturbance (10%)**

**This update is intended for government and emergency response officials, and is provided for informational and situational awareness purposes only. Forecast conditions are subject to change based on a variety of environmental factors. For additional information, or for any life safety concerns with an active weather event please contact your County Emergency Management or Public Safety Office, local National Weather Service forecast office or visit the National Hurricane Center website at [www.nhc.noaa.gov](http://www.nhc.noaa.gov).**

# Atlantic Basin Satellite Image

15:00 03-OCT-2017 GMT Copyright © 1998-2017 WSI Corporation <http://www.wsi.com>







# Five-Day Graphical Tropical Weather Outlook

National Hurricane Center Miami, Florida



www.hurricanes.gov

All Disturbances

1. \* Formation chance through 48 hours...**medium**...40 percent.  
\* Formation chance through 5 days...**medium**...60 percent.
2. \* Formation chance through 48 hours...**low**...10 percent.  
\* Formation chance through 5 days...**low**...10 percent.

2:00 pm EDT  
Tue Oct 3 2017

100°W 90°W 80°W 70°W 60°W 50°W 40°W 30°W 20°W

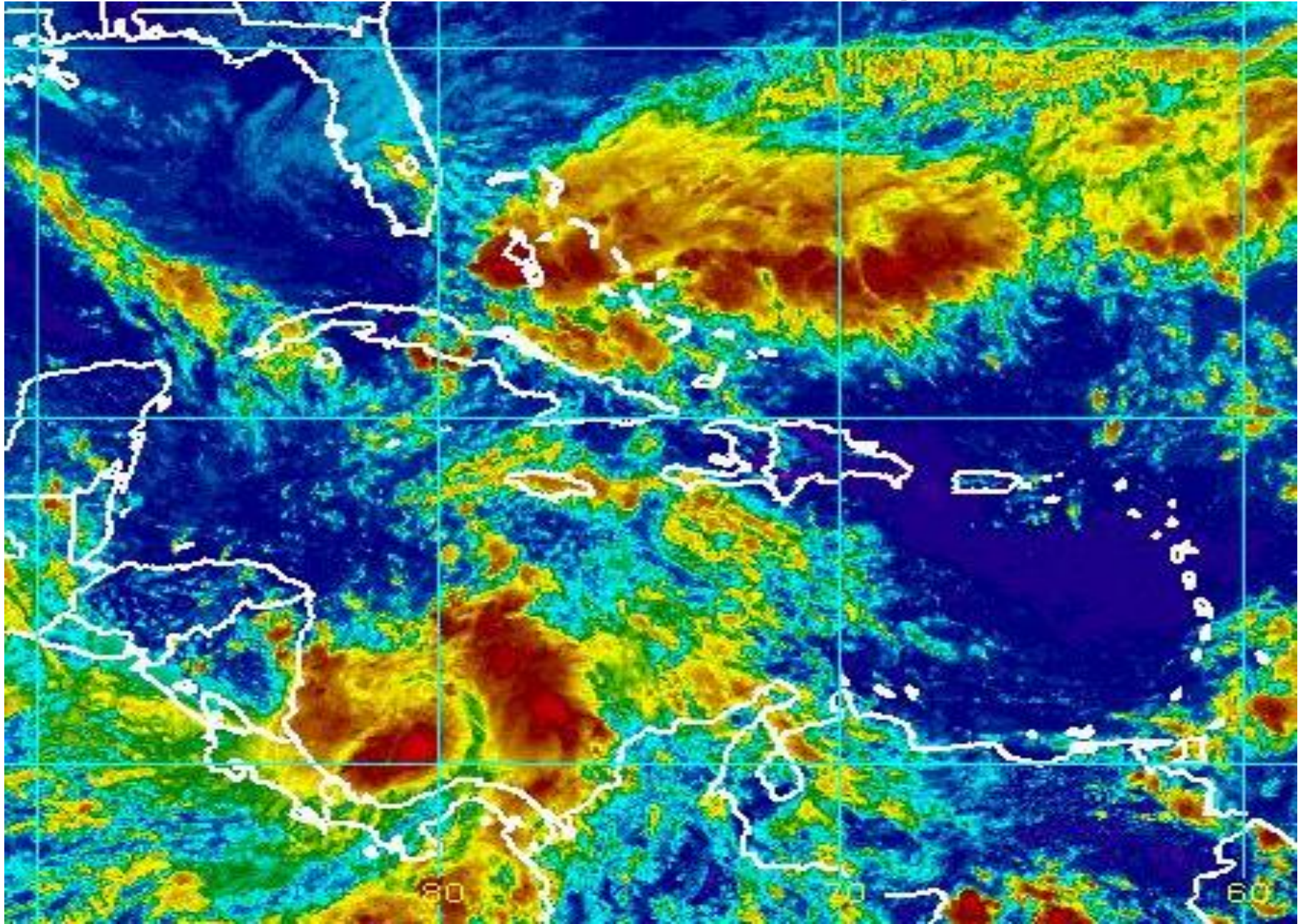
Current Disturbances and Five-Day Cyclone Formation Chance: < 40% 40-60% > 60%

Tropical or Sub-Tropical Cyclone: Depression Storm Hurricane

Post-Tropical Cyclone Remnants



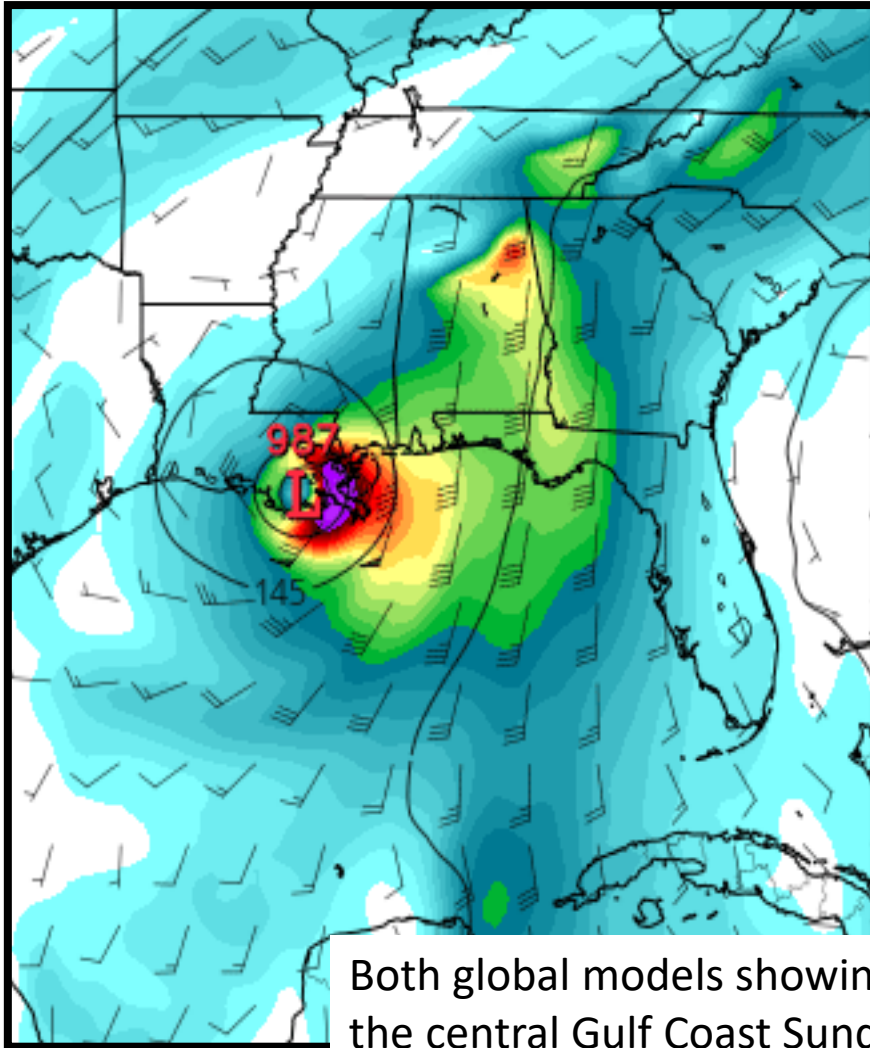
# 90L Satellite Image



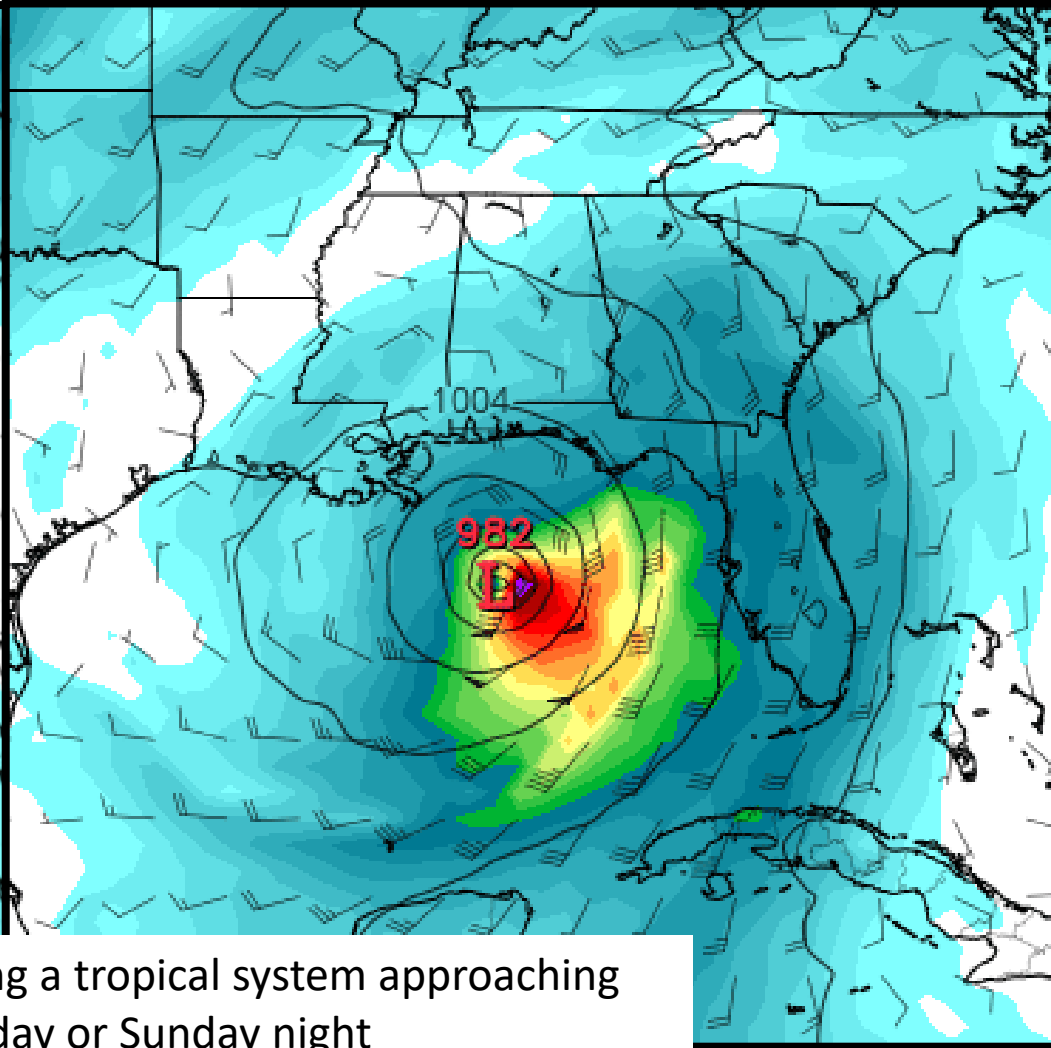


# Forecast Weather Maps – Sunday morning

## GFS model

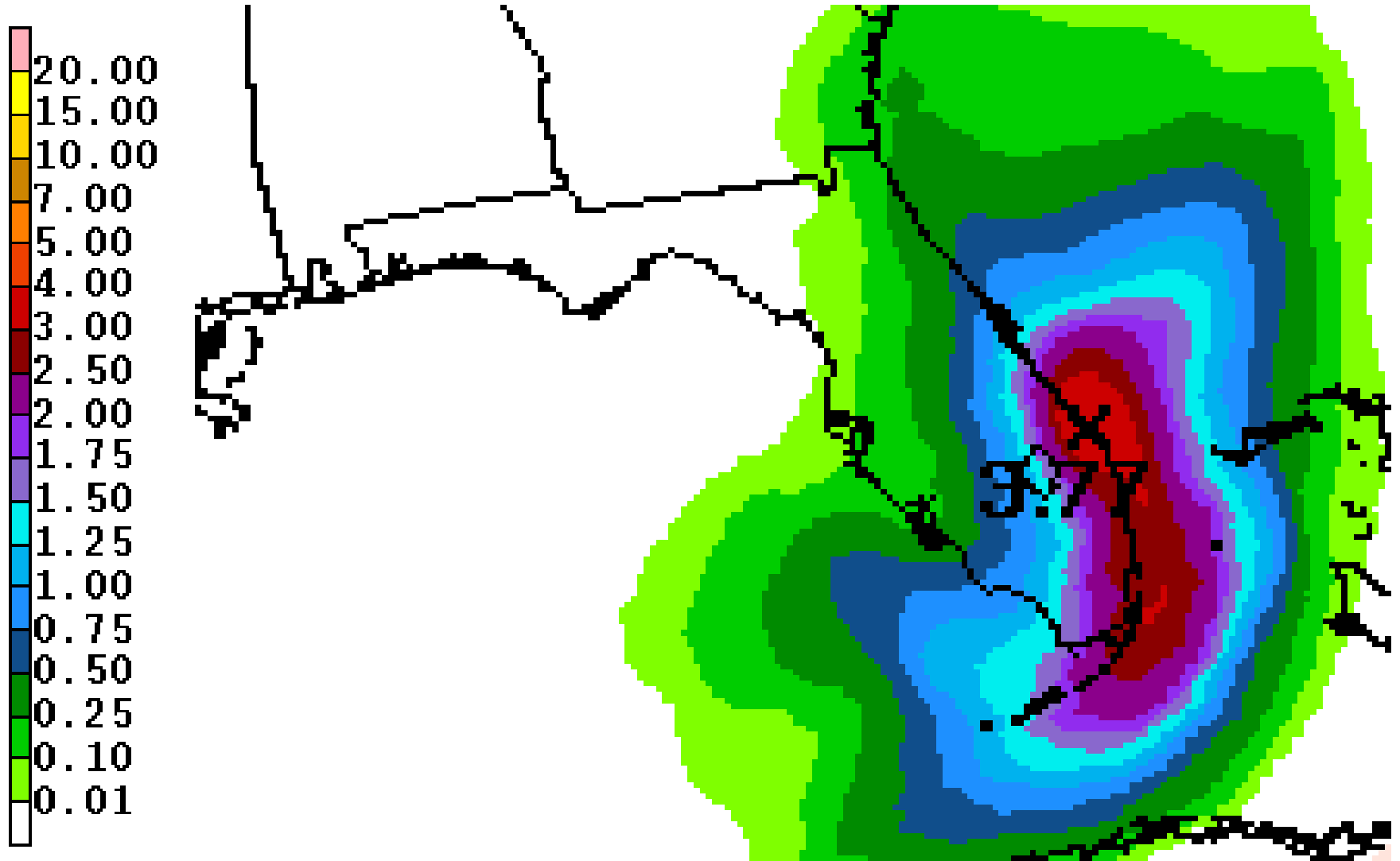


## European Model



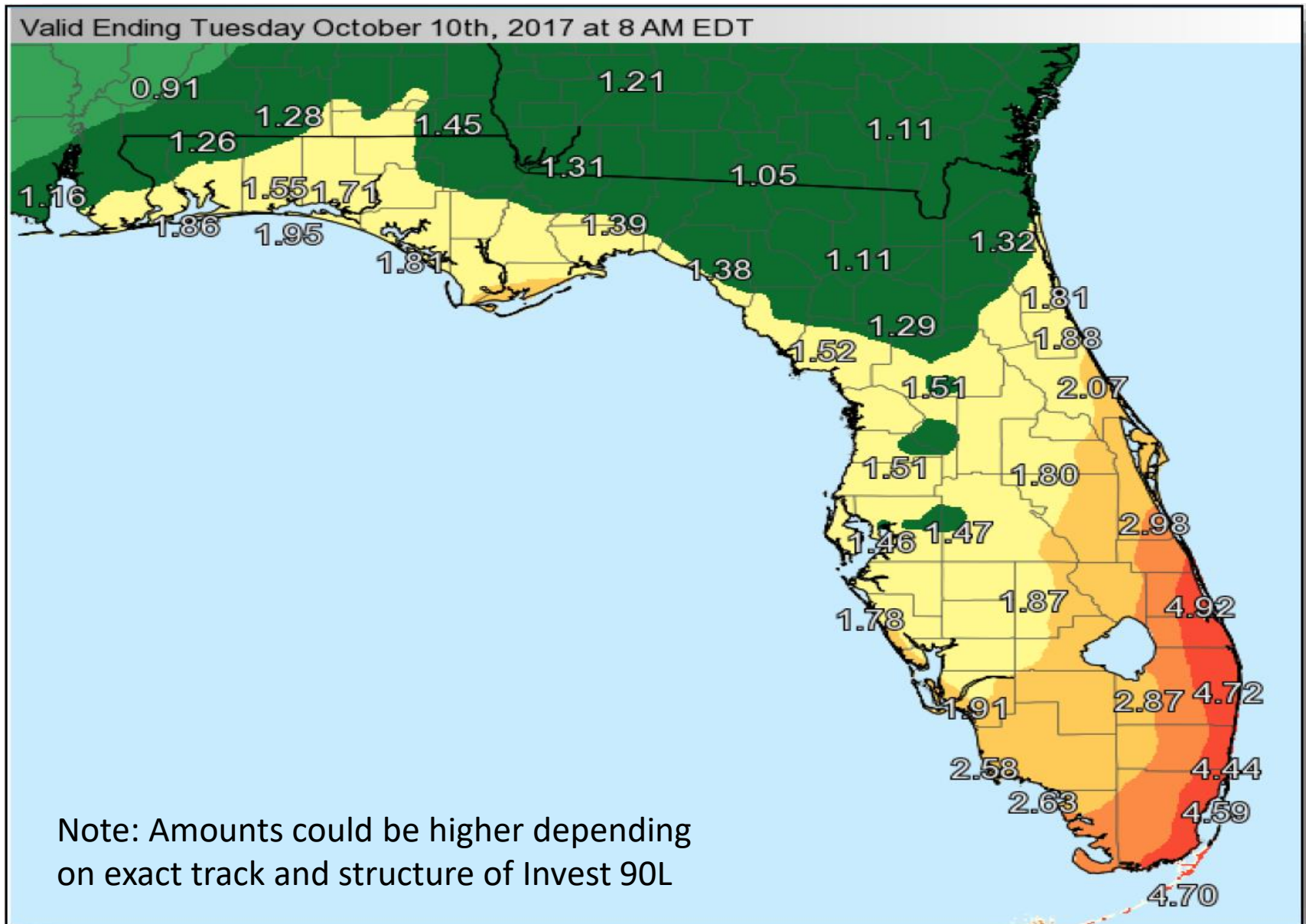
Both global models showing a tropical system approaching the central Gulf Coast Sunday or Sunday night

# Forecast Cumulative Rainfall – Next 3 Days

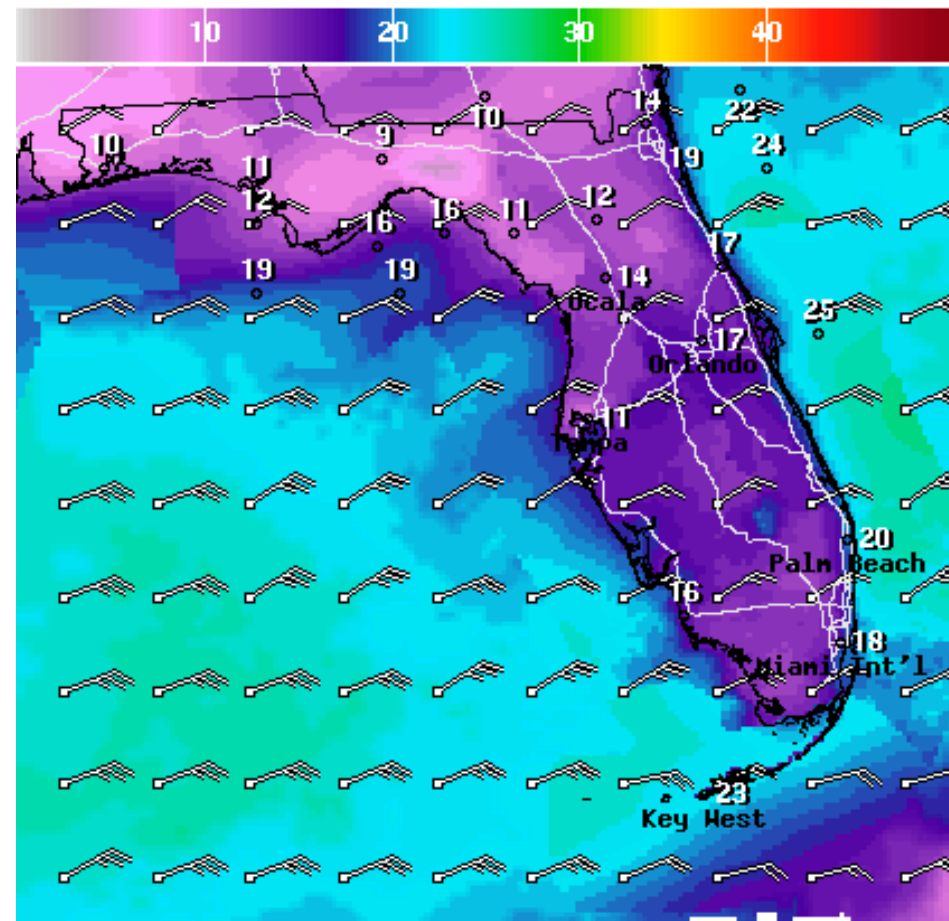


The low pressure disturbance located near the northwestern Bahamas will continue to increase rain chances across South Florida as it moves west. Although development of this system is not expected, it will likely produce heavy rain and gusty winds over portions of the Bahamas and Florida during the next couple of days.

# Forecast Total Rainfall – Next 7 Days



# Forecast Winds/Wave Height Wednesday Afternoon

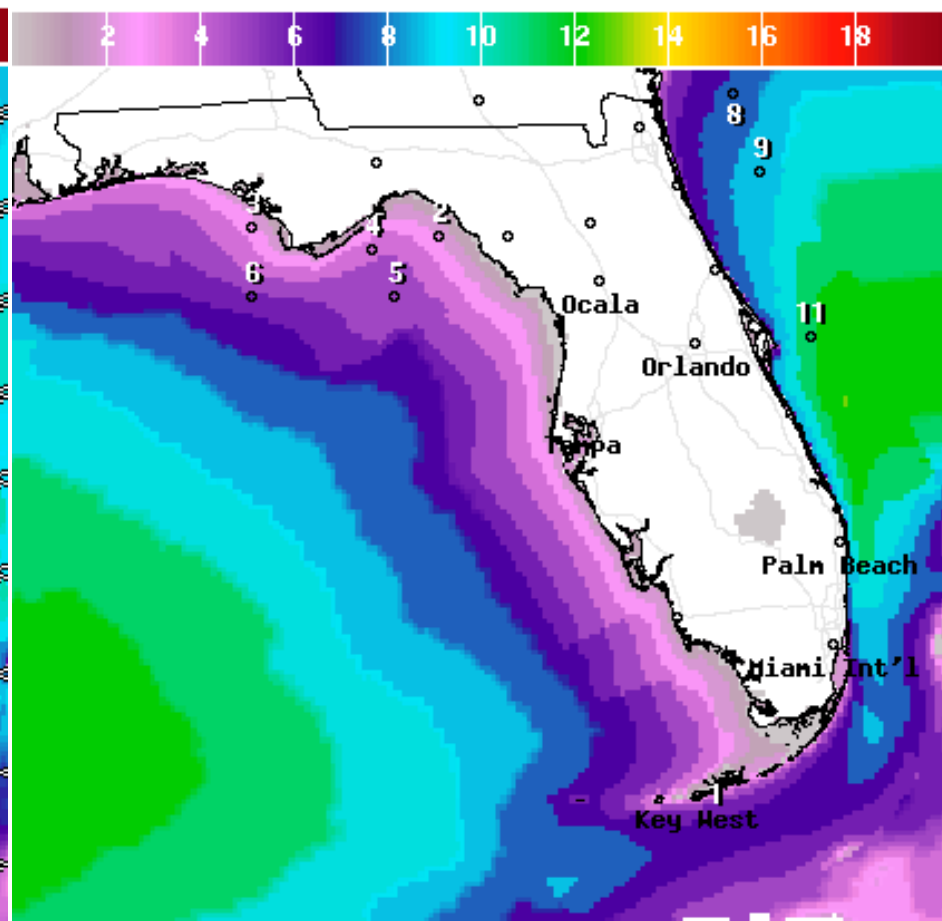


WindSpd(Kts) & WindDir For Wed Oct 04 2017 5PM EDT  
(Wed Oct 04 2017 21Z)



National Digital Forecast Database

17z issuance Graphic created-Oct 03 1:40PM EDT



Wave Height(ft) Ending Wed Oct 04 2017 8PM EDT  
(Thu Oct 05 2017 00Z)



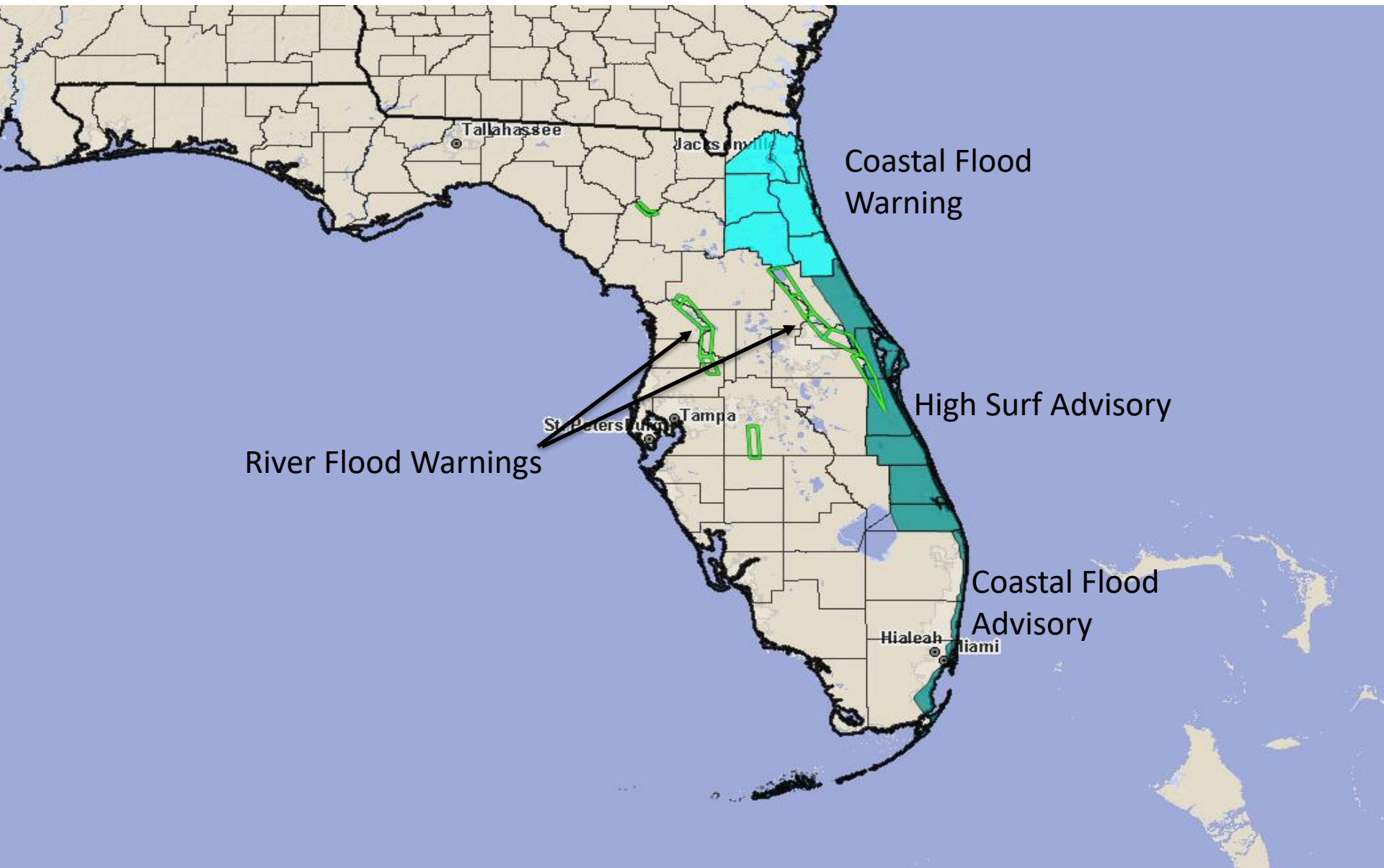
National Digital Forecast Database

17z issuance Graphic created-Oct 03 1:37PM EDT





# Active Watches/Warnings



## Summary:

- A tropical disturbance has become better organized in the southwest Caribbean Sea and has been designated as Invest 90L.
  - Confidence is increasing that this system will become a tropical depression or tropical storm sometime this week as it moves northward towards the Gulf of Mexico.
  - The National Hurricane Center is now predicting a 40% chance of storm development within the next 48 hours and a 60% chance of development by Saturday.
  - Confidence in the eventual track and intensity are currently low since the system has yet to develop. However, global models are starting to come into better agreement and predict that 90L could approach the central U.S. Gulf Coast on Sunday or Monday.
  - A Hurricane Hunter reconnaissance mission has been scheduled for tomorrow afternoon.
  - The next name on the 2017 Atlantic storm list is Nate.
- 
- Elsewhere, a broad low pressure disturbance located near the northwestern Bahamas will continue to increase rain chances across South Florida as it moves west.
  - Although development of this system is not expected, it will likely produce heavy rain and gusty winds over portions of the Bahamas and Florida during the next couple of days.

## Florida Outlook:

- Rainfall amounts of 1-3" (with isolated amounts up to 4-5" possible) forecast for portions of South Florida and Florida Keys during the next 72 hours.
  - Strong east winds combined with the lunar "King Tide" could have the potential to produce high waves and minor coastal flooding during high tide. Any locally heavy rainfall during times of high tide could exacerbate coastal flooding issues.
  - A **Coastal Flood Advisory** is in effect for metro/coastal sections of Southeast Florida, with a **Coastal Flood Warning** in effect for the St. Johns River and tributaries.
- 
- Concerning 90L, specific impacts to Florida are still uncertain.
  - However, a system moving towards the U.S. Gulf Coast would have the ability to produce above-normal tides, dangerous surf conditions, possible isolated tornadoes, and isolated heavy rain.

Another briefing packet will be issued Wednesday morning. For more information, visit the NHC website at [www.hurricanes.gov](http://www.hurricanes.gov).





# TROPICAL UPDATE

Created by:

Amy Godsey, Chief State Meteorologist

[amy.godsey@em.myflorida.com](mailto:amy.godsey@em.myflorida.com)

State Meteorological Support Unit

Florida Division of Emergency Management

Users wishing to subscribe (approval pending) to this distribution list, register at  
[https://public.govdelivery.com/accounts/FLDEM/subscriber/new?topic\\_id=SERT\\_Met\\_Tropics](https://public.govdelivery.com/accounts/FLDEM/subscriber/new?topic_id=SERT_Met_Tropics).

Other reports available for subscription are available at

<https://public.govdelivery.com/accounts/FLDEM/subscriber/new?preferences=true>