



TROPICAL UPDATE

5 PM EDT

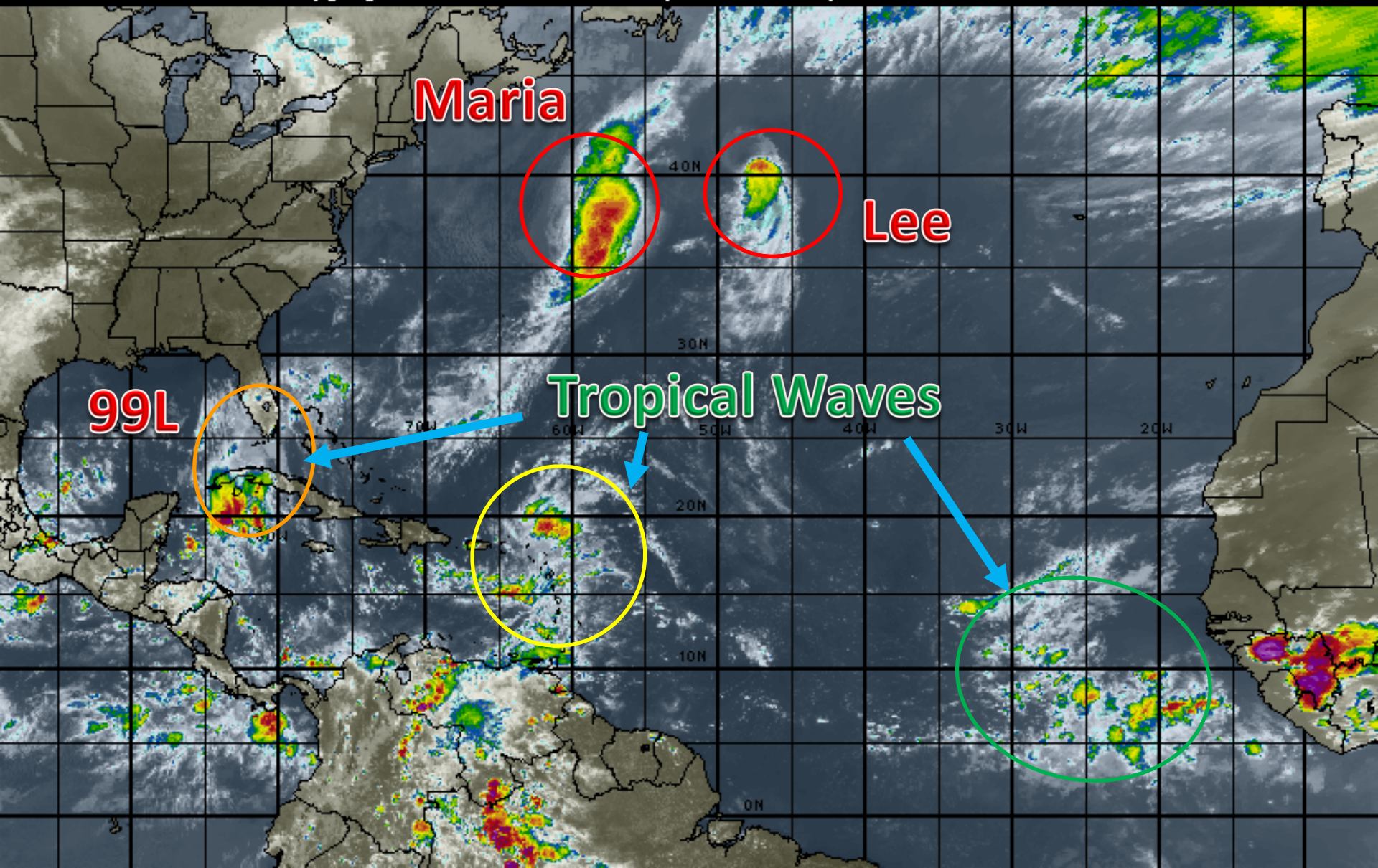
Friday, September 29, 2017

**Tropical Storm Lee, Tropical Storm Maria &
Invest 99L (40%)**

This update is intended for government and emergency response officials, and is provided for informational and situational awareness purposes only. Forecast conditions are subject to change based on a variety of environmental factors. For additional information, or for any life safety concerns with an active weather event please contact your County Emergency Management or Public Safety Office, local National Weather Service forecast office or visit the National Hurricane Center website at www.nhc.noaa.gov.

Atlantic Basin Satellite Image

18:00 29-SEP-2017 GMT Copyright © 1998-2017 WSI Corporation <http://www.wsi.com>





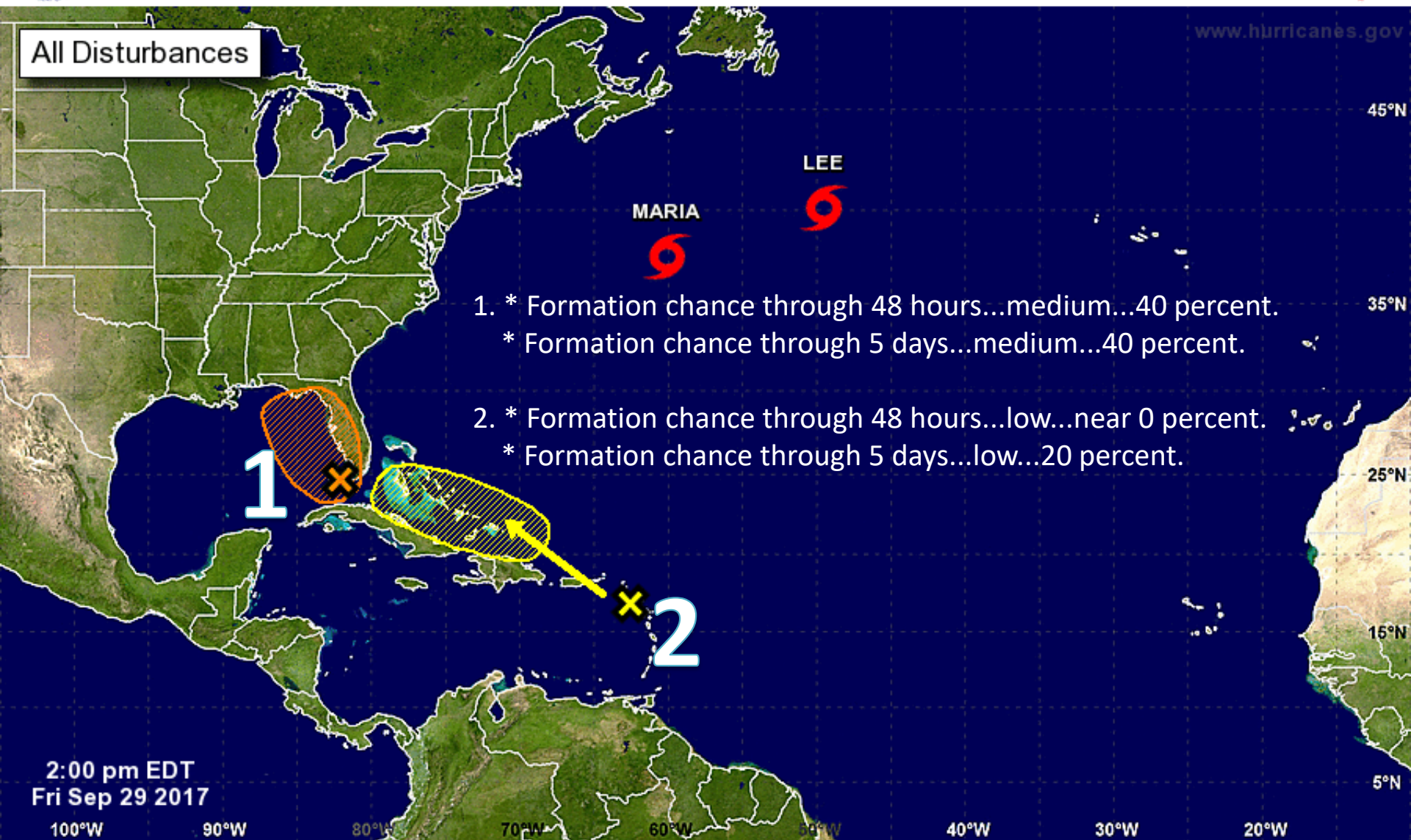
Five-Day Graphical Tropical Weather Outlook

National Hurricane Center Miami, Florida



www.hurricanes.gov

All Disturbances

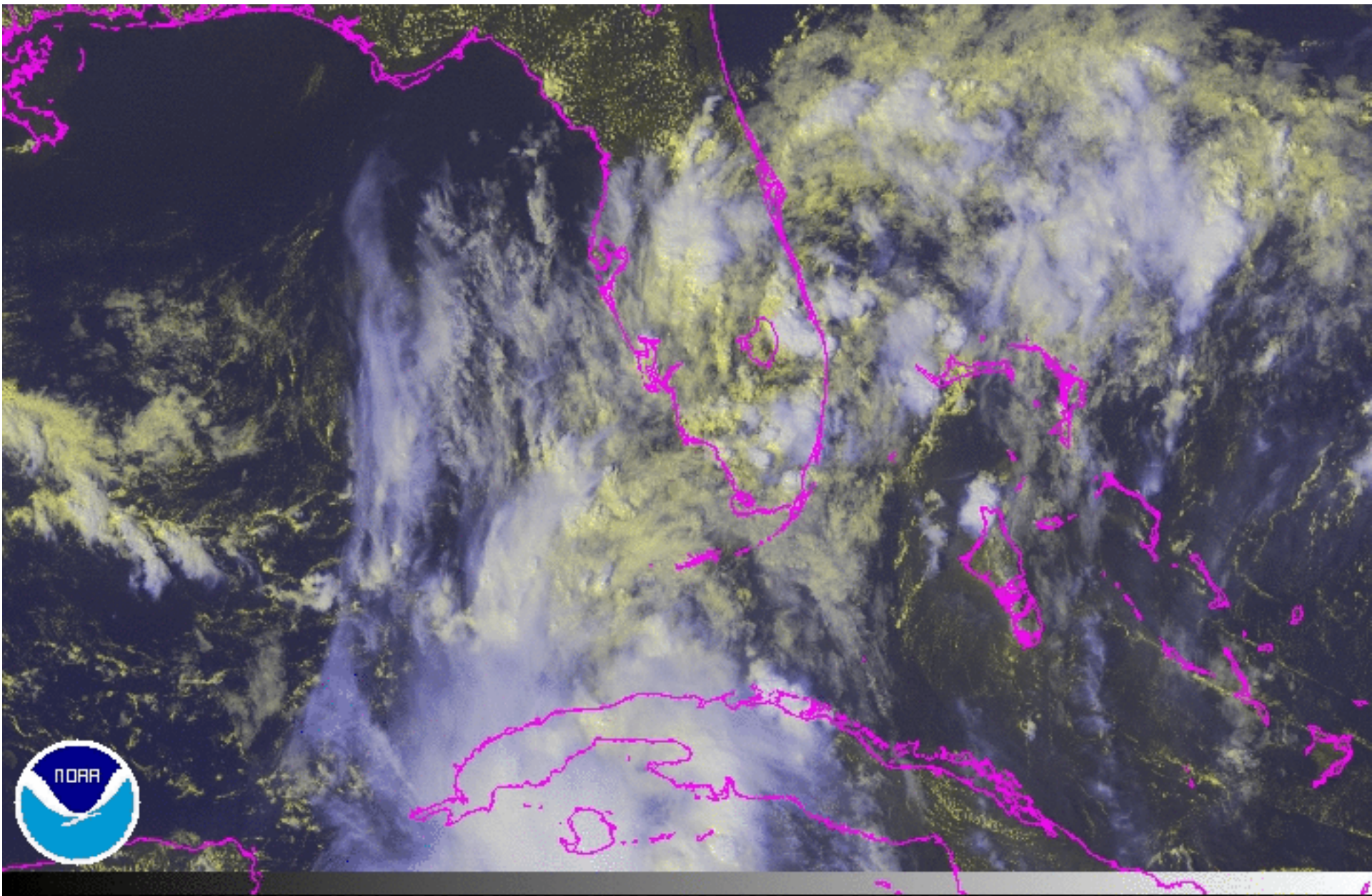


Current Disturbances and Five-Day Cyclone Formation Chance: ✕ < 40% ✕ 40-60% ✕ > 60%

Tropical or Sub-Tropical Cyclone: ○ Depression 🌀 Storm 🌀 Hurricane

⊗ Post-Tropical Cyclone ✕ Remnants

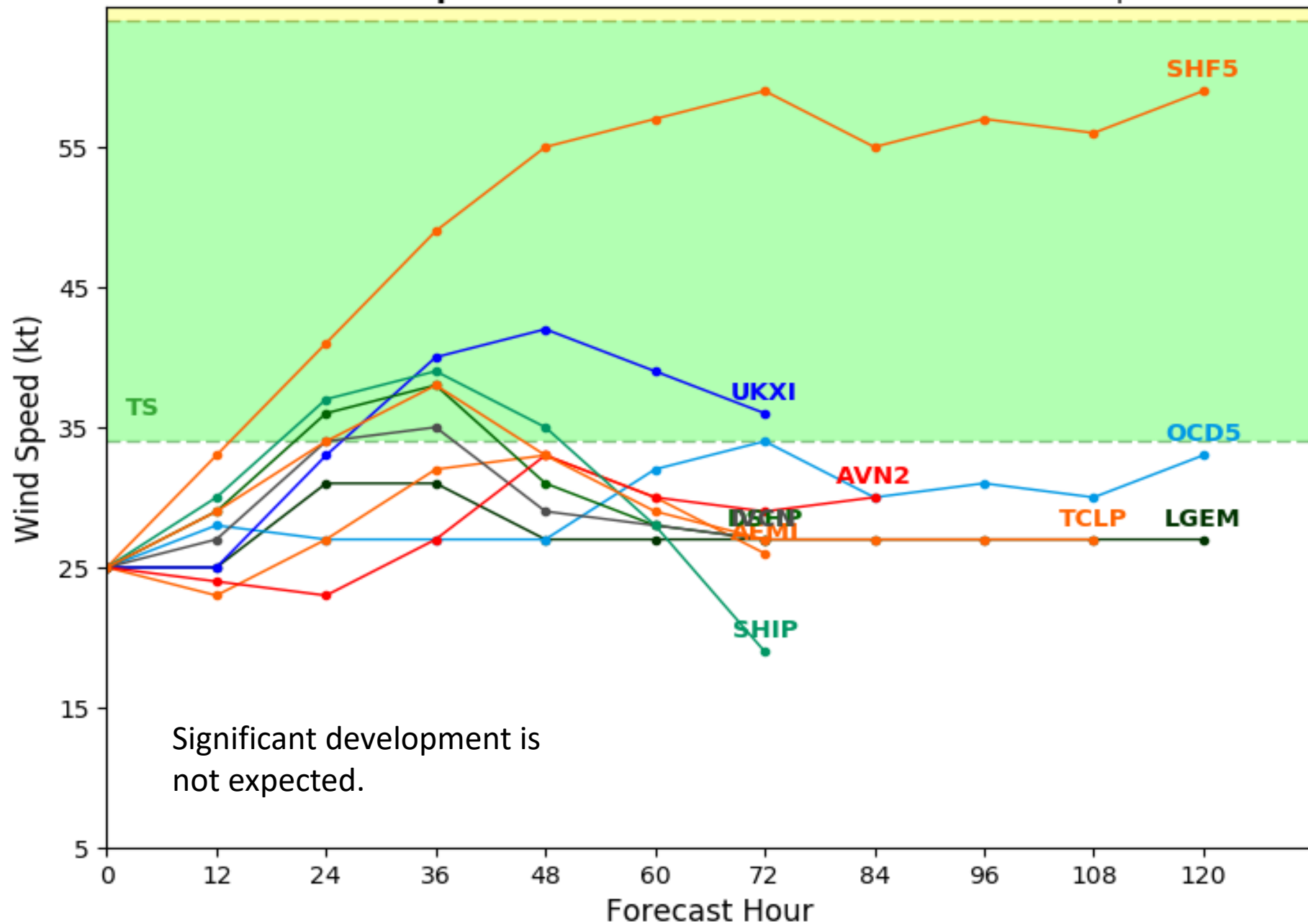
99L Satellite Image



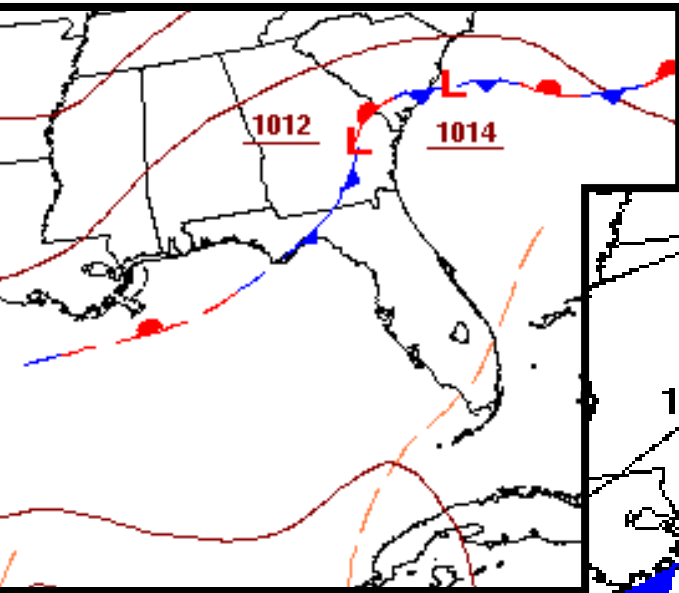
Invest 99L Model Intensity Guidance

Initialized at 18z Sep 29 2017

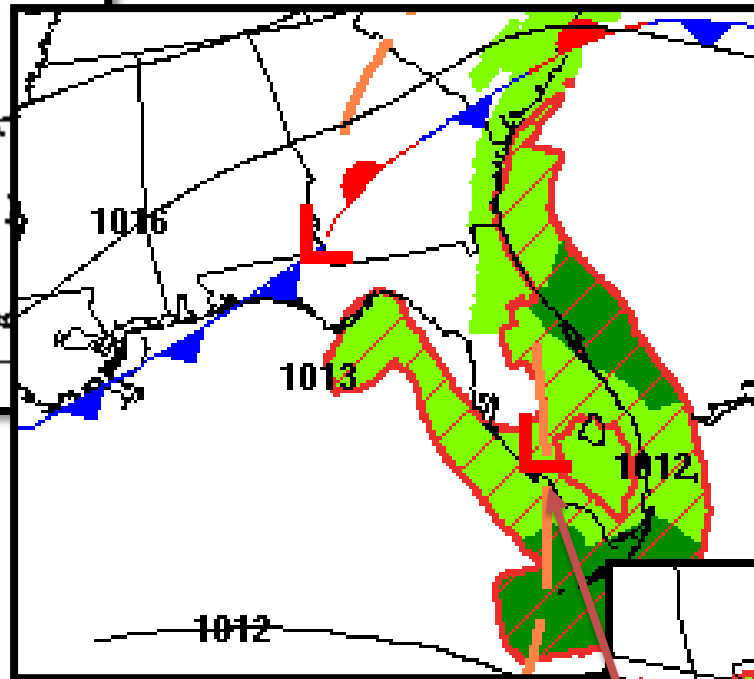
Levi Cowan - tropicaltidbits.com



Forecast Weather Maps

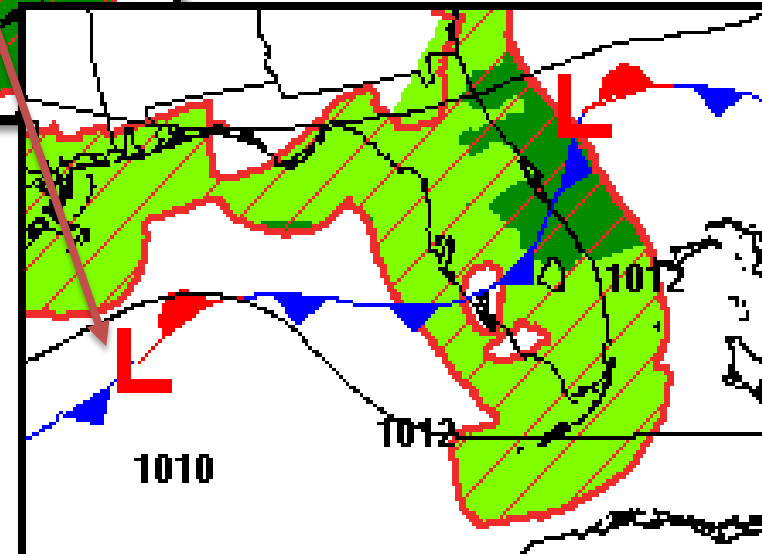


Friday



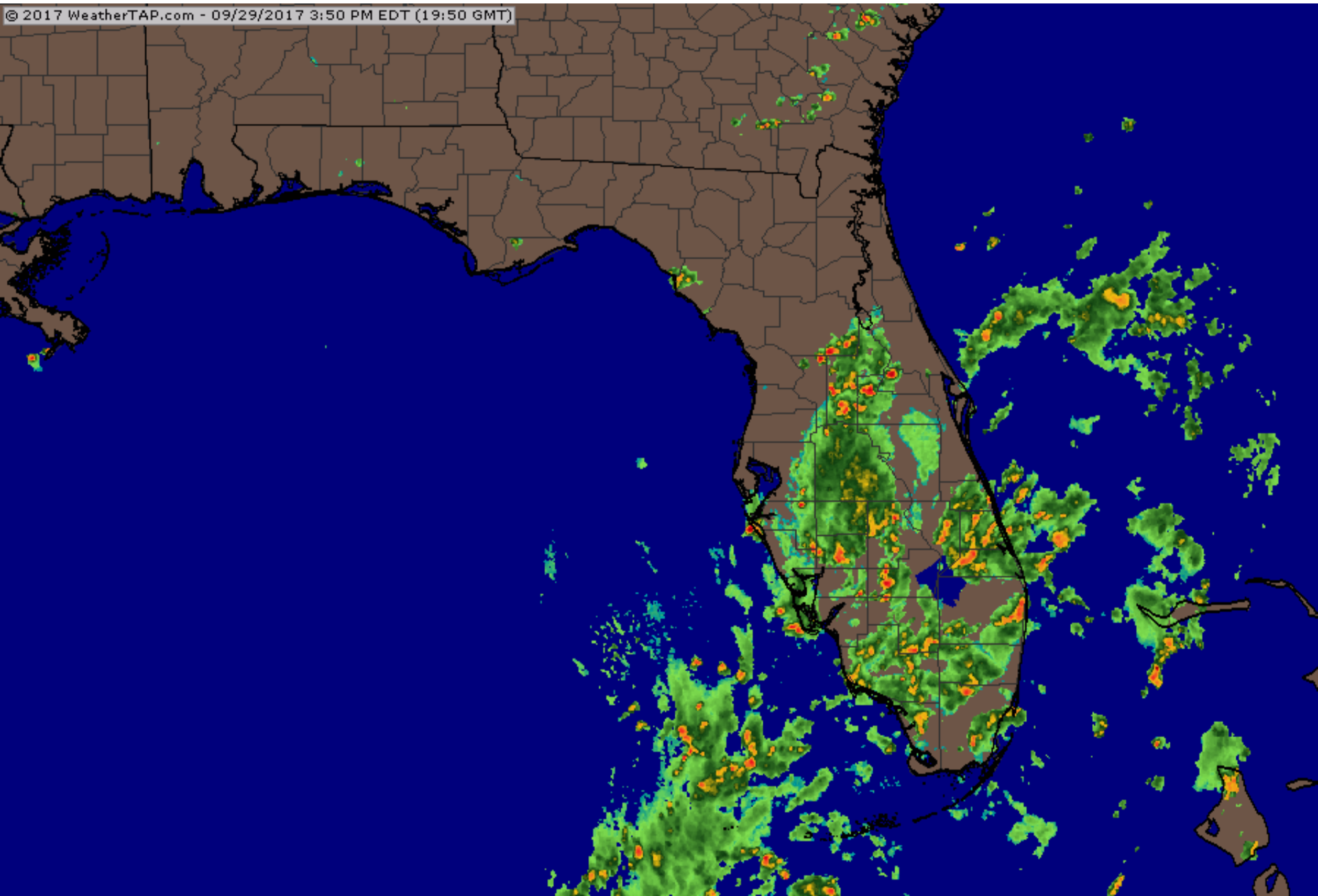
Saturday

Sunday



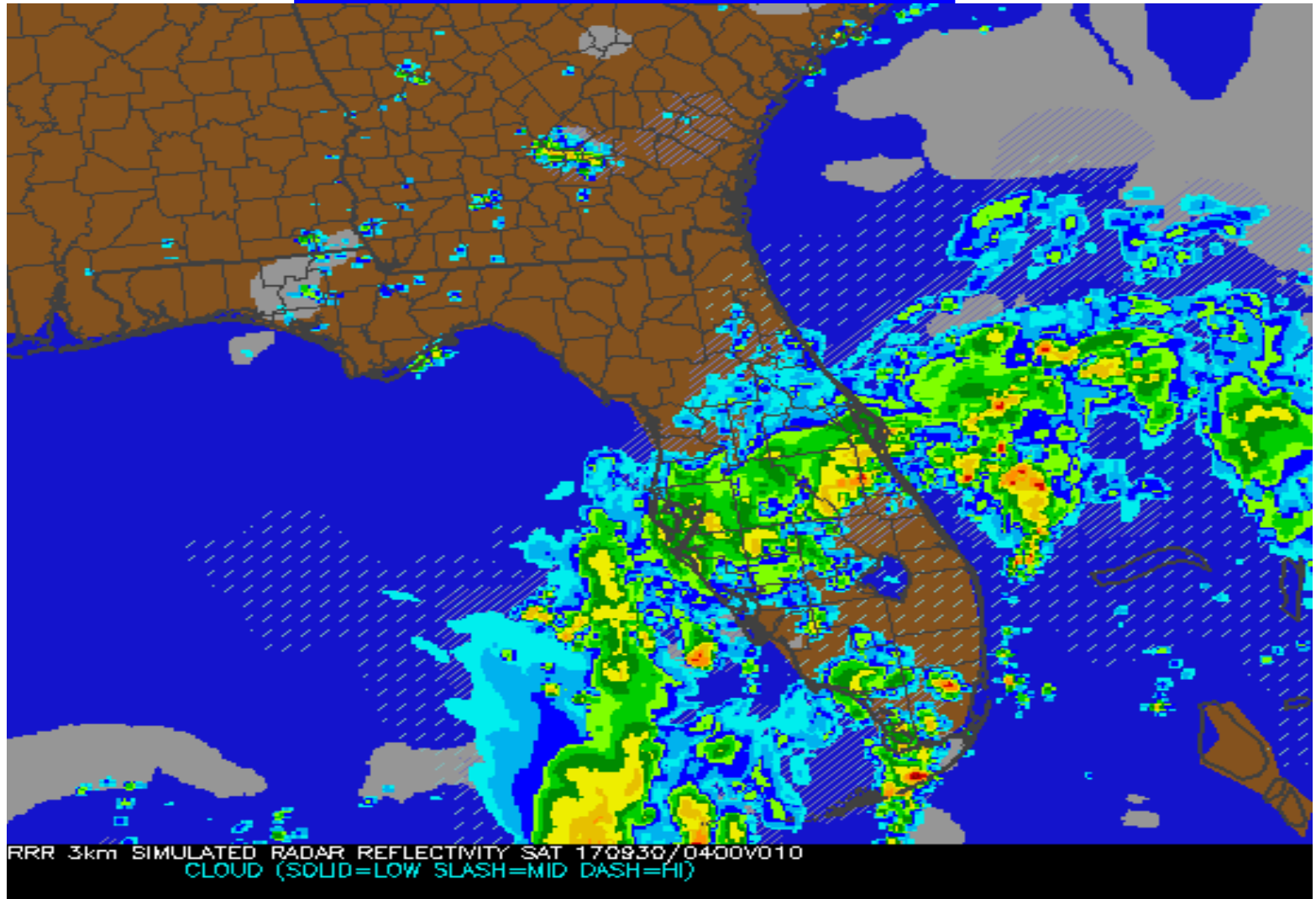
Trough is expected to form into an area of low pressure off the Florida West Coast tonight or Saturday. Low is expected to move northwest on Sunday as another non-tropical low forms along the Northeast FL coast.

State Radar as of 3:50pm EDT Friday

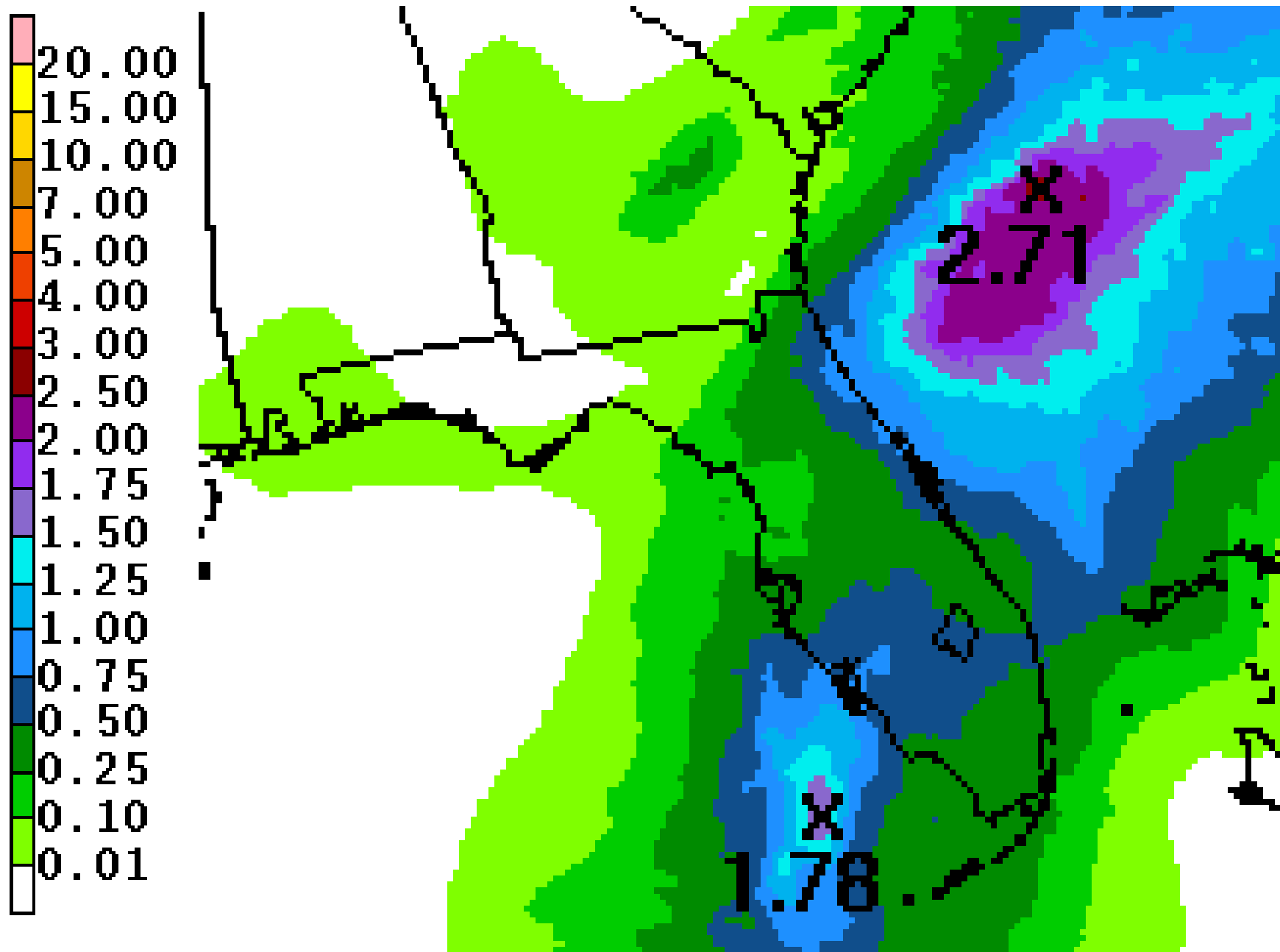


Future Radar Forecast – Tonight 12am

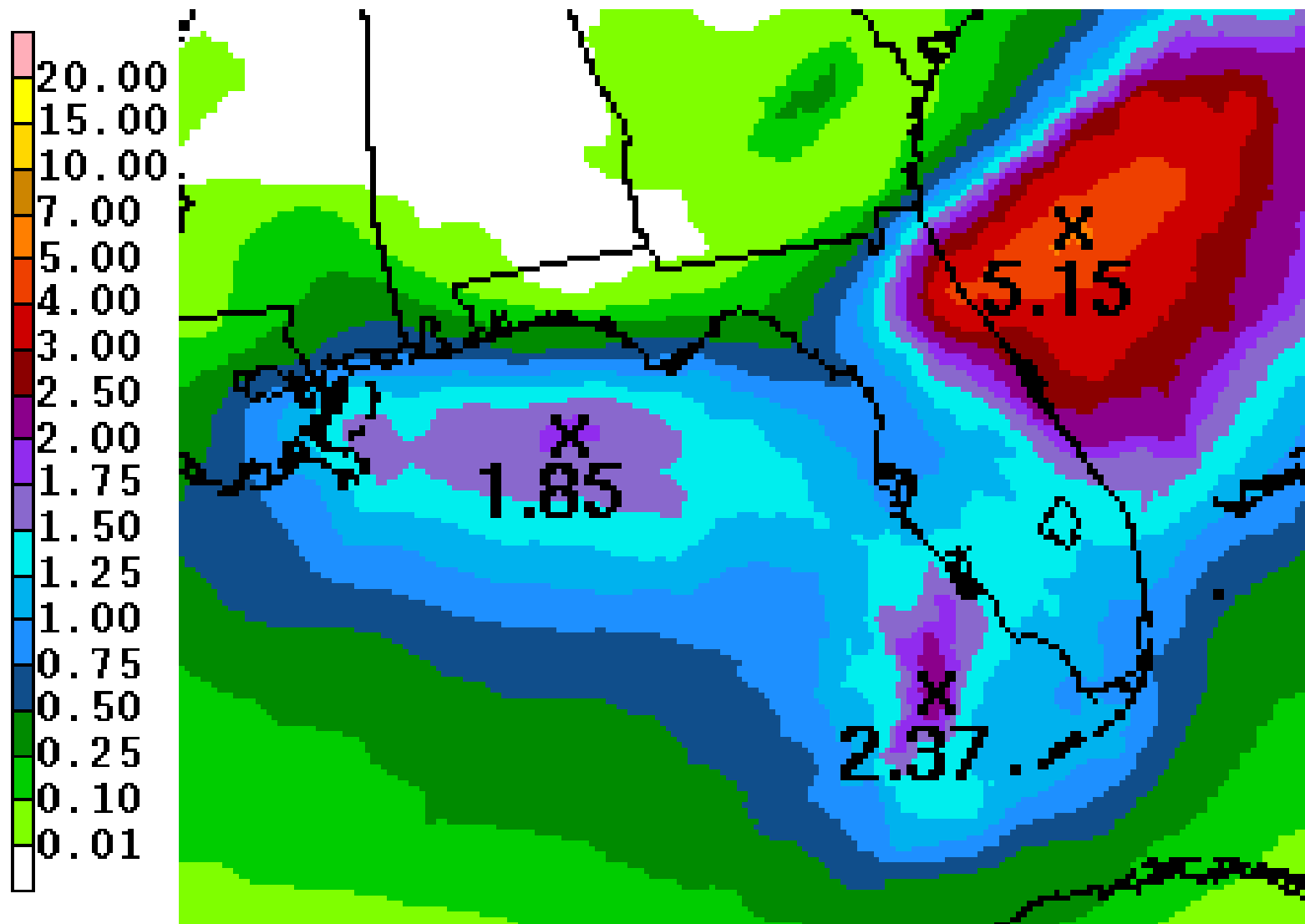
http://mp1.met.psu.edu/~fxg1/HRRRSE_CUR/rloop.html



Forecast Rainfall - Next 24 Hours

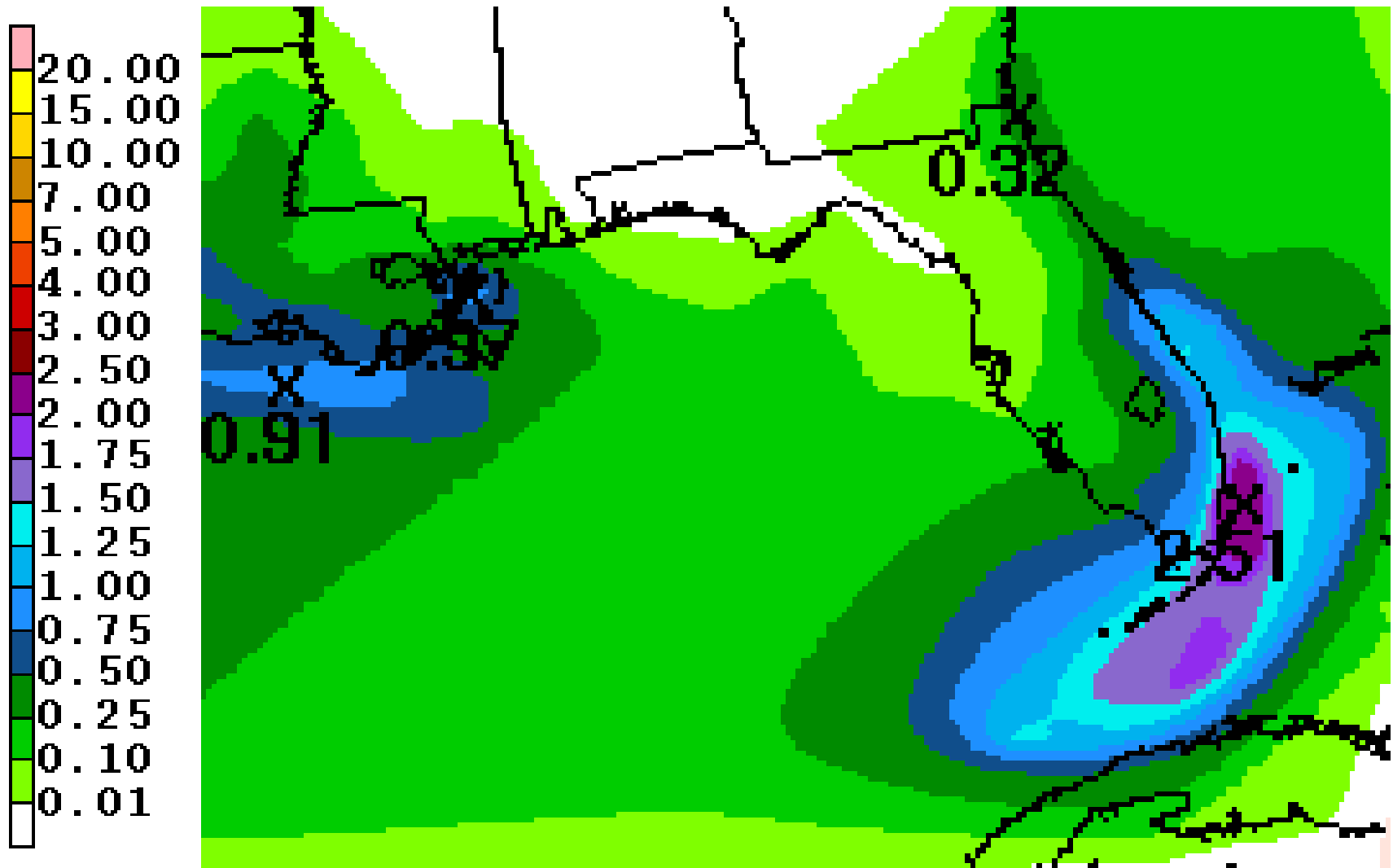


Forecast Cumulative Rainfall – Next 3 Days



Combination of stalled front and developing low will increase rain chances across the entire Peninsula this weekend. Heaviest amounts may stay offshore but locally heavier amounts are possible.

Forecast Rainfall – Next Wednesday/Thursday from Eastern Caribbean Tropical Wave



Tropical Storm Lee

11 AM EDT Fri Sep 29 2017

Position 40.1 N 49.5 W

Maximum Winds 70 mph

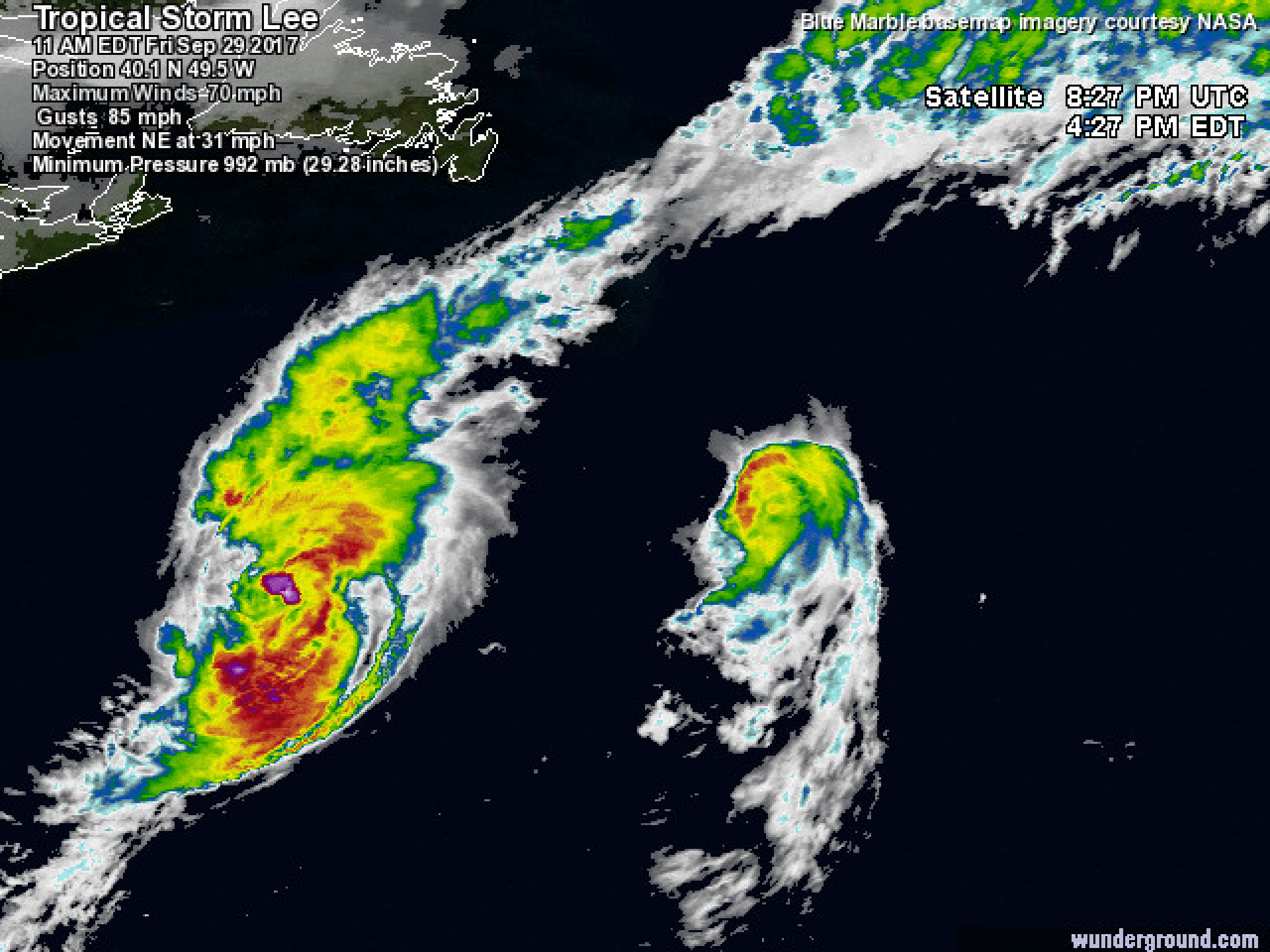
Gusts 85 mph

Movement NE at 31 mph

Minimum Pressure 992 mb (29.28 inches)

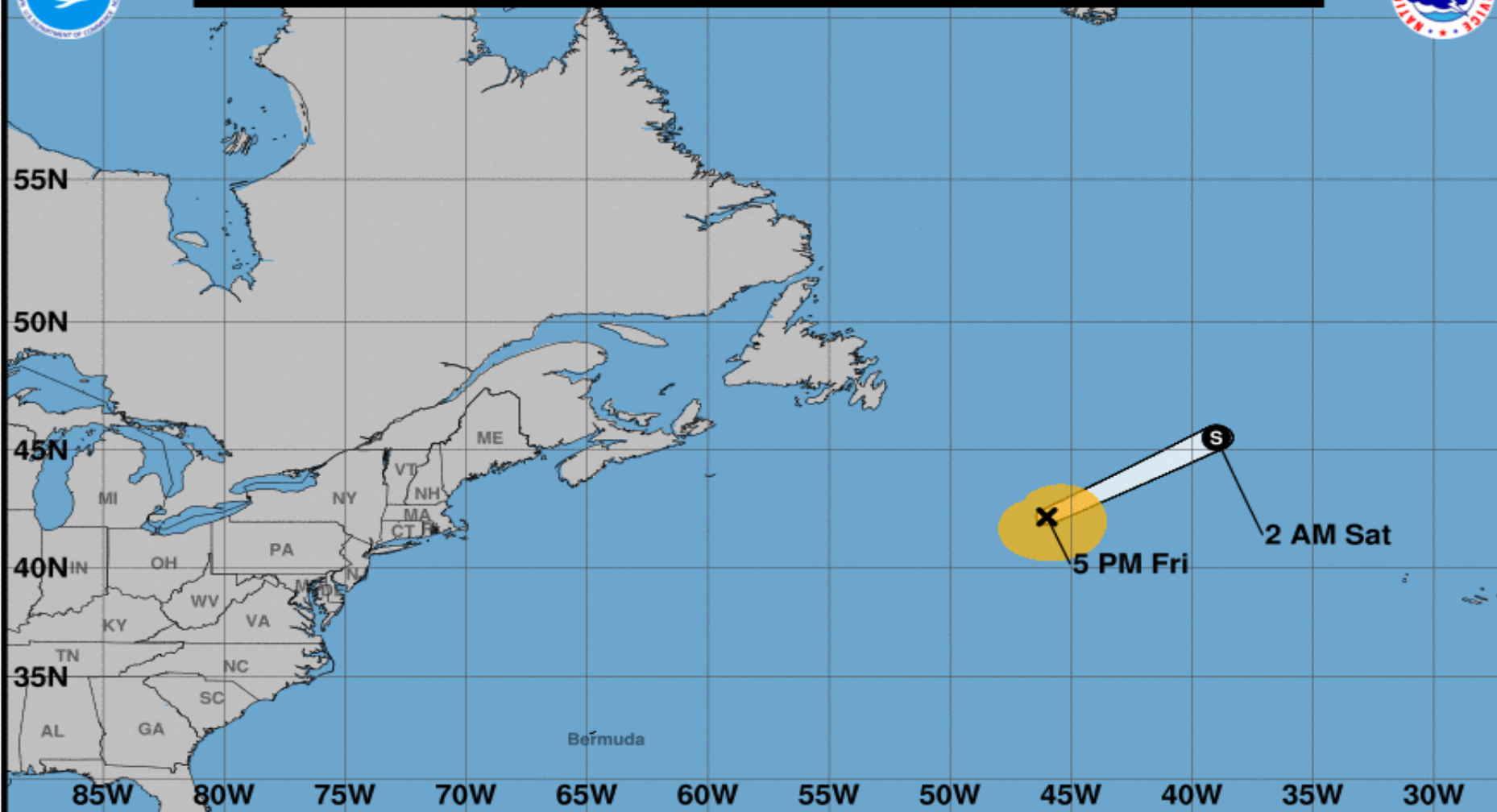
Blue Marble basemap imagery courtesy NASA

Satellite 8:27 PM UTC
4:27 PM EDT





Note: The cone contains the probable path of the storm center but does not show the size of the storm. Hazardous conditions can occur outside of the cone.



Tropical Storm Lee

Friday September 29, 2017

5 PM AST Advisory 47

NWS National Hurricane Center

Current information: x

Center location 42.2 N 46.0 W

Maximum sustained wind 65 mph

Movement NE at 36 mph

Forecast positions:

● Tropical Cyclone ○ Post/Potential TC

Sustained winds: D < 39 mph

S 39-73 mph H 74-110 mph M > 110 mph

Potential track area:

Day 1-3 Day 4-5

Watches:

Hurricane Trop Stm

Warnings:

Hurricane Trop Stm

Current wind extent:

Hurricane Trop Stm

Tropical Storm Maria

11 AM EDT Fri Sep 29 2017

Position 37.5 N, 60.1 W

Maximum Winds 55 mph

Gusts 70 mph

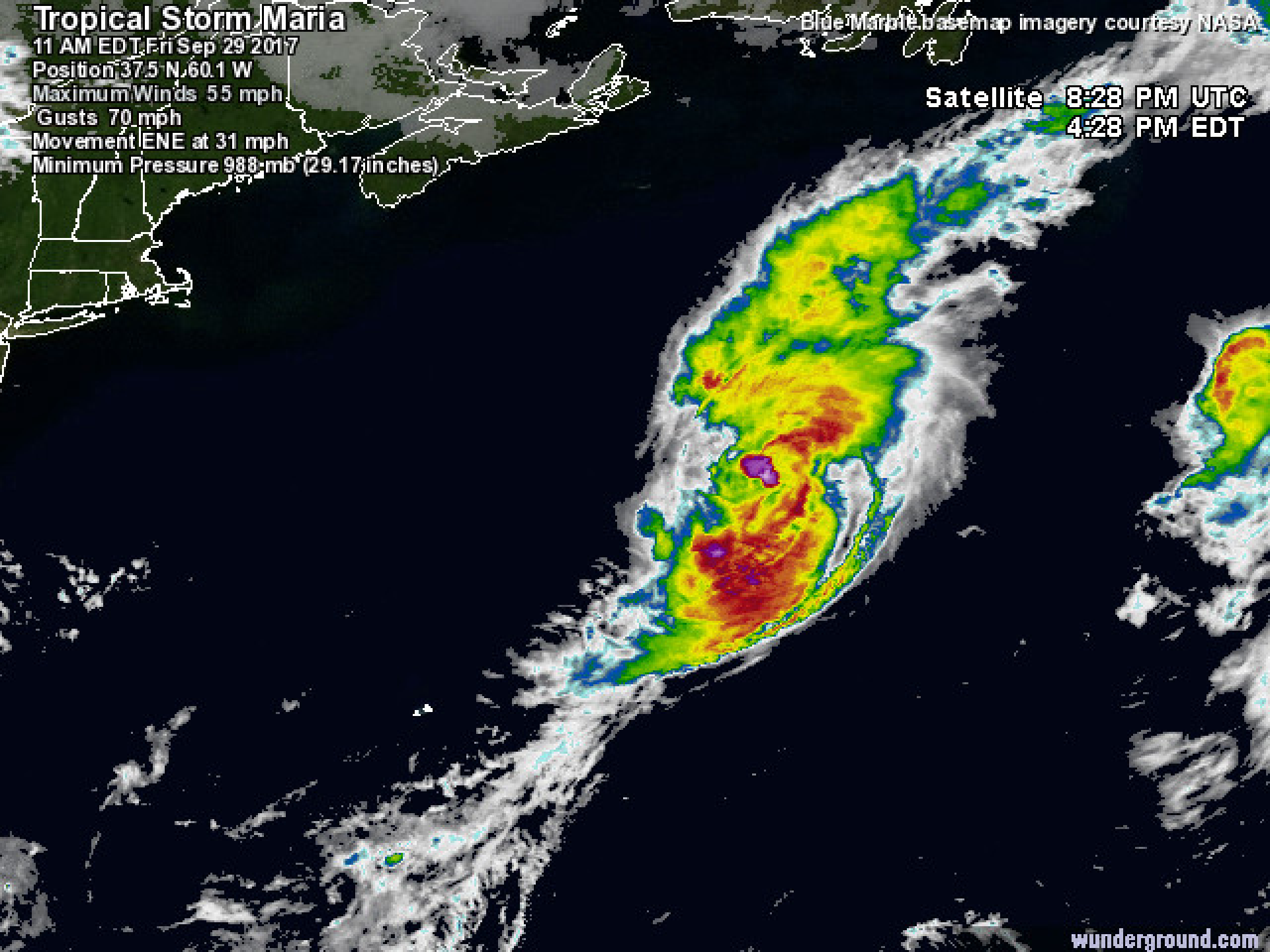
Movement ENE at 31 mph

Minimum Pressure 988 mb (29.17 inches)

Blue Marble basemap imagery courtesy NASA

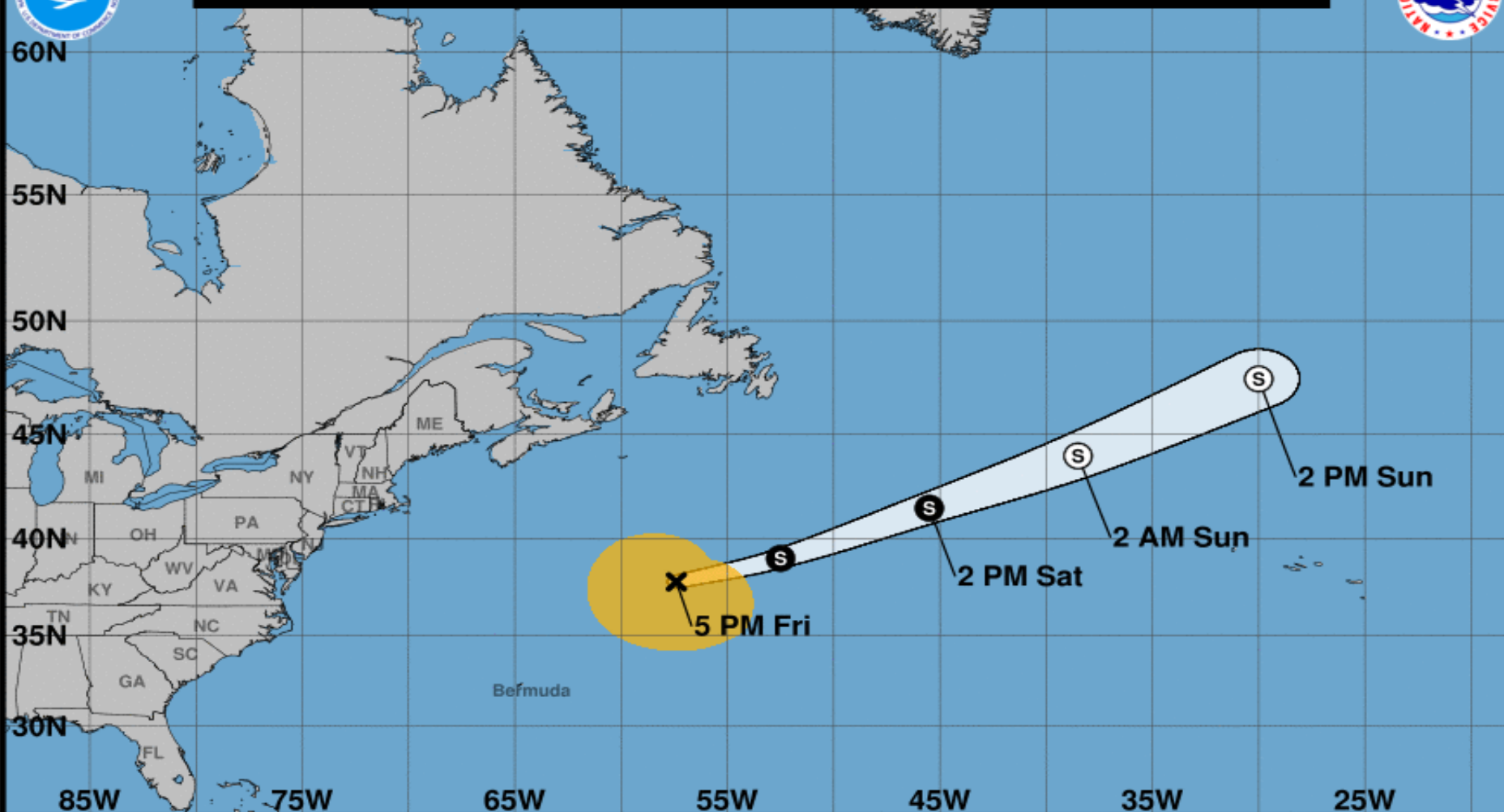
Satellite 8:28 PM UTC

4:28 PM EDT





Note: The cone contains the probable path of the storm center but does not show the size of the storm. Hazardous conditions can occur outside of the cone.



Tropical Storm Maria

Friday September 29, 2017

5 PM AST Advisory 55

NWS National Hurricane Center

Current information: x

Center location 37.8 N 57.4 W

Maximum sustained wind 60 mph

Movement ENE at 31 mph

Forecast positions:

● Tropical Cyclone ○ Post/Potential TC

Sustained winds: D < 39 mph

S 39-73 mph H 74-110 mph M > 110 mph

Potential track area:

Day 1-3 Day 4-5

Watches:

Hurricane Trop Stm

Warnings:

Hurricane Trop Stm

Current wind extent:

Hurricane Trop Stm

Summary

- At 11am EDT Friday, Lee weakened to a tropical storm. At 5pm EDT Friday, Tropical Storm Lee was located about 1040 miles west-northwest of the Azores and was racing northeast at 36 mph.
- Maximum sustained winds have decreased to near 65 mph.
- Additional weakening is forecast, and Lee is expected to dissipate on Saturday as it continues moving rapidly northeast.
- At 5pm EDT Friday, Tropical Storm Maria was located about 570 miles southeast of Halifax, Nova Scotia and was moving very quickly east-northeast at 31mph.
- Maximum winds remain near 60 mph, and Maria is expected to become an extratropical low by Saturday night.
- Elsewhere, a large area of showers and storms extending from the northwestern Caribbean Sea to Southeast Florida is associated with a broad surface trough interacting with an upper-level low.
- This system is expected to form into a weak area of low pressure tonight or on Saturday off the Florida West Coast and move northwest through the weekend.
- Conditions are somewhat conducive for this low to acquire tropical characteristics and the National Hurricane Center is predicting a 40% (medium) chance of tropical cyclone formation.
- The Hurricane Hunter reconnaissance mission scheduled for Saturday has been cancelled.
- Significant development into a strong tropical system is not expected and regardless of development, the general impacts to Florida will be the same.
- A tropical wave is producing cloudiness and showers over the northeastern Caribbean Sea and the adjacent Atlantic waters.
- There is only a 20% (low) chance of tropical cyclone formation within the next 5 days, but rains associated with this low may impact Florida next week.

Florida Outlook

- Regardless of development, this system, in combination with a stalled frontal boundary over northern Florida, is likely to produce locally heavy rainfall of 1-3" (with isolated amounts up to 4-5" possible) over portions of the Florida Peninsula and Florida Keys during the next 48 hours.
- A Flood Watch is in effect for Lee County through Sunday evening for possible flooding along the Imperial River.
- River Flood Warnings remain in effect for the Withlacoochee River, St. Johns River, Peace River and Santa Fe River, but no additional rises on rivers are expected. The current forecast for rain would only act to slow the recession of any ongoing river flooding.
- Persistent east winds will have the potential to produce elevated tides (especially along the St. Johns River) and high waves that could result in additional coastal erosion during high tide.

Another briefing packet will be issued Saturday. For more information, visit the NHC website at www.hurricanes.gov.



TROPICAL UPDATE

Created by:

Amy Godsey, Chief State Meteorologist

amy.godsey@em.myflorida.com

State Meteorological Support Unit

Florida Division of Emergency Management

Users wishing to subscribe (approval pending) to this distribution list, register at
https://public.govdelivery.com/accounts/FLDEM/subscriber/new?topic_id=SERT_Met_Tropics.

Other reports available for subscription are available at

<https://public.govdelivery.com/accounts/FLDEM/subscriber/new?preferences=true>