



# **TROPICAL UPDATE**

**9 AM EDT**

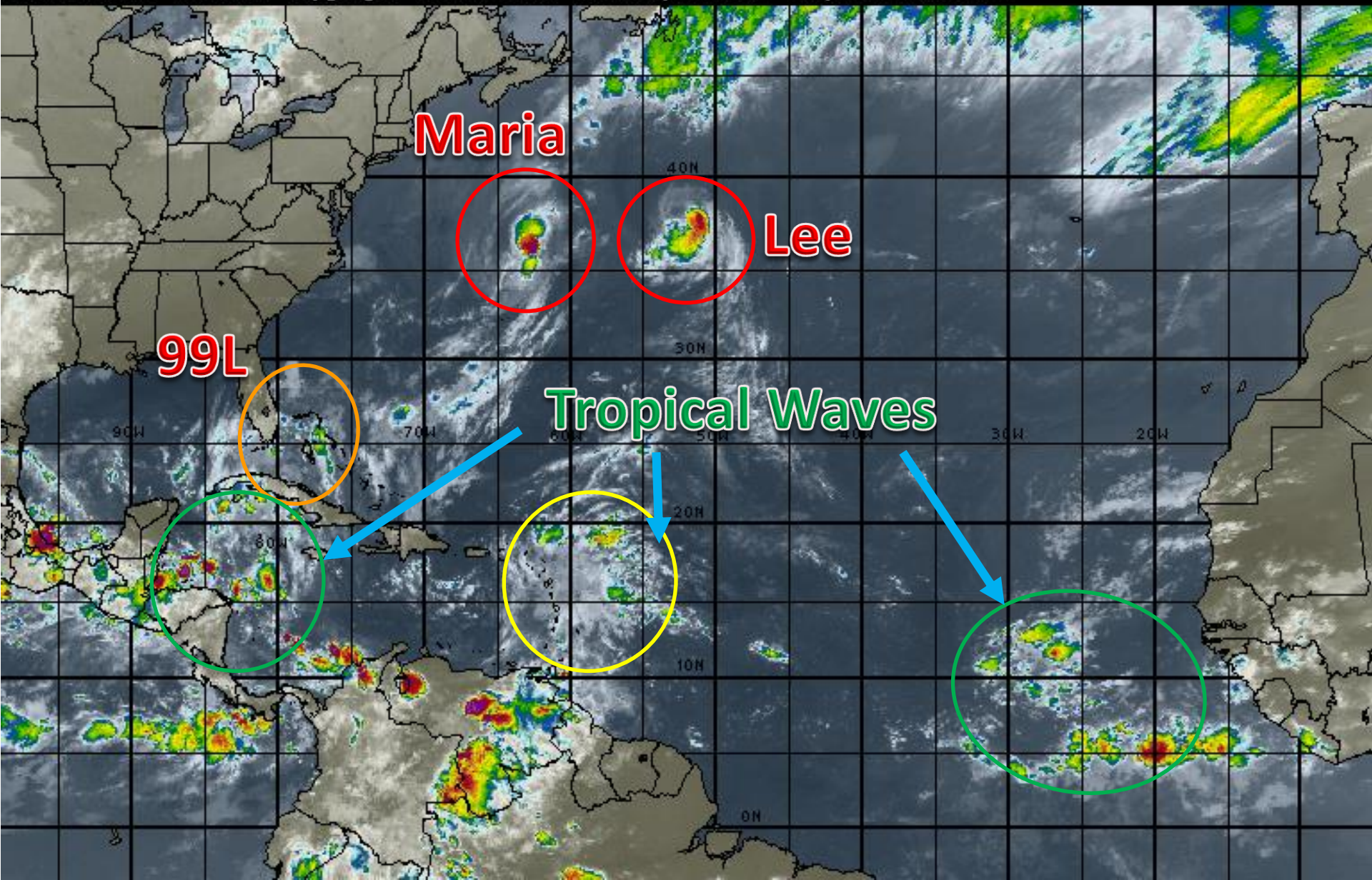
**Friday, September 29, 2017**

**Hurricane Lee, Tropical Storm Maria &  
Invest 99L (90%)**

**This update is intended for government and emergency response officials, and is provided for informational and situational awareness purposes only. Forecast conditions are subject to change based on a variety of environmental factors. For additional information, or for any life safety concerns with an active weather event please contact your County Emergency Management or Public Safety Office, local National Weather Service forecast office or visit the National Hurricane Center website at [www.nhc.noaa.gov](http://www.nhc.noaa.gov).**

# Atlantic Basin Satellite Image

09:00 29-SEP-2017 GMT Copyright © 1998-2017 WSI Corporation <http://www.wsi.com>





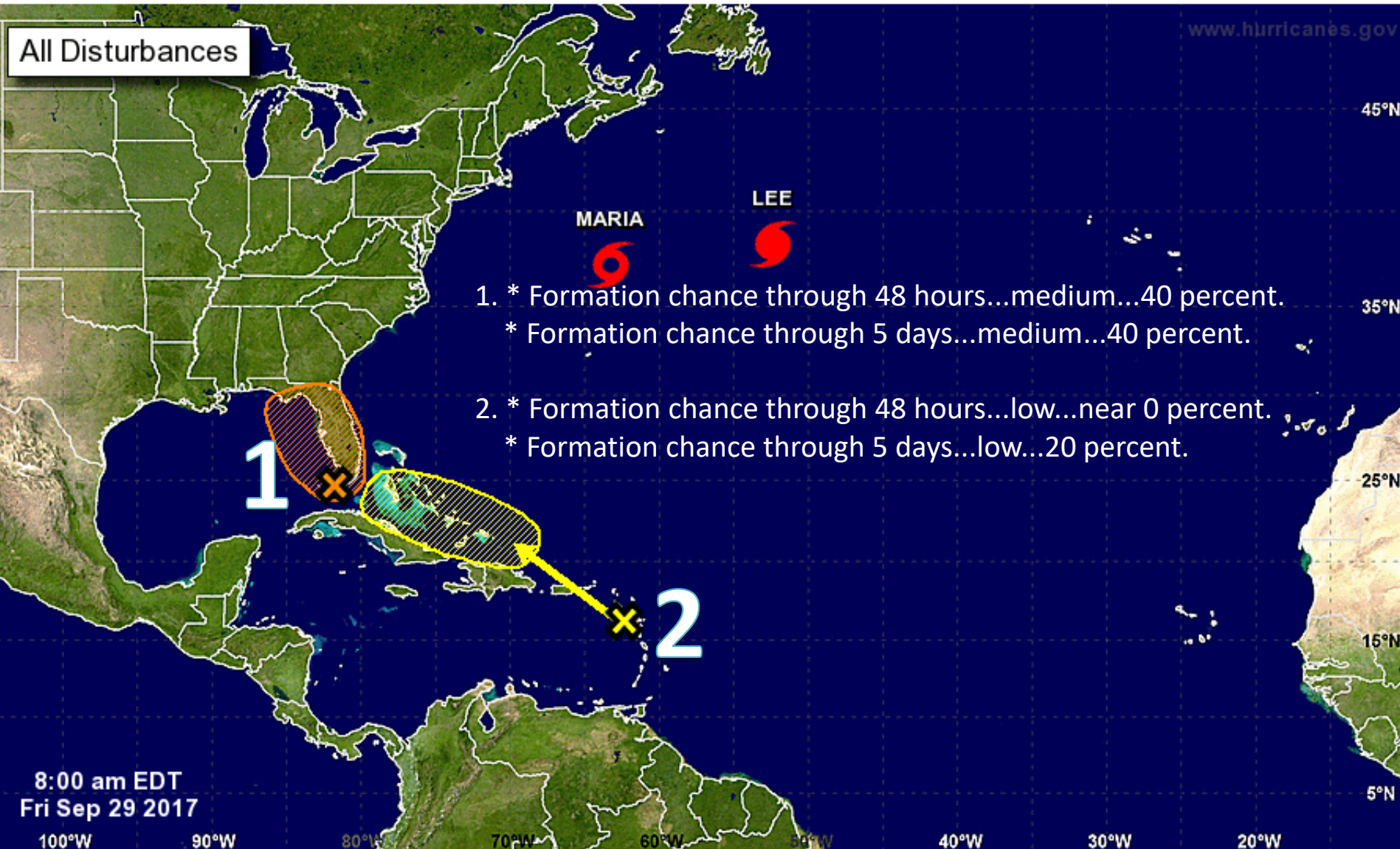


# Five-Day Graphical Tropical Weather Outlook

National Hurricane Center Miami, Florida



www.hurricanes.gov

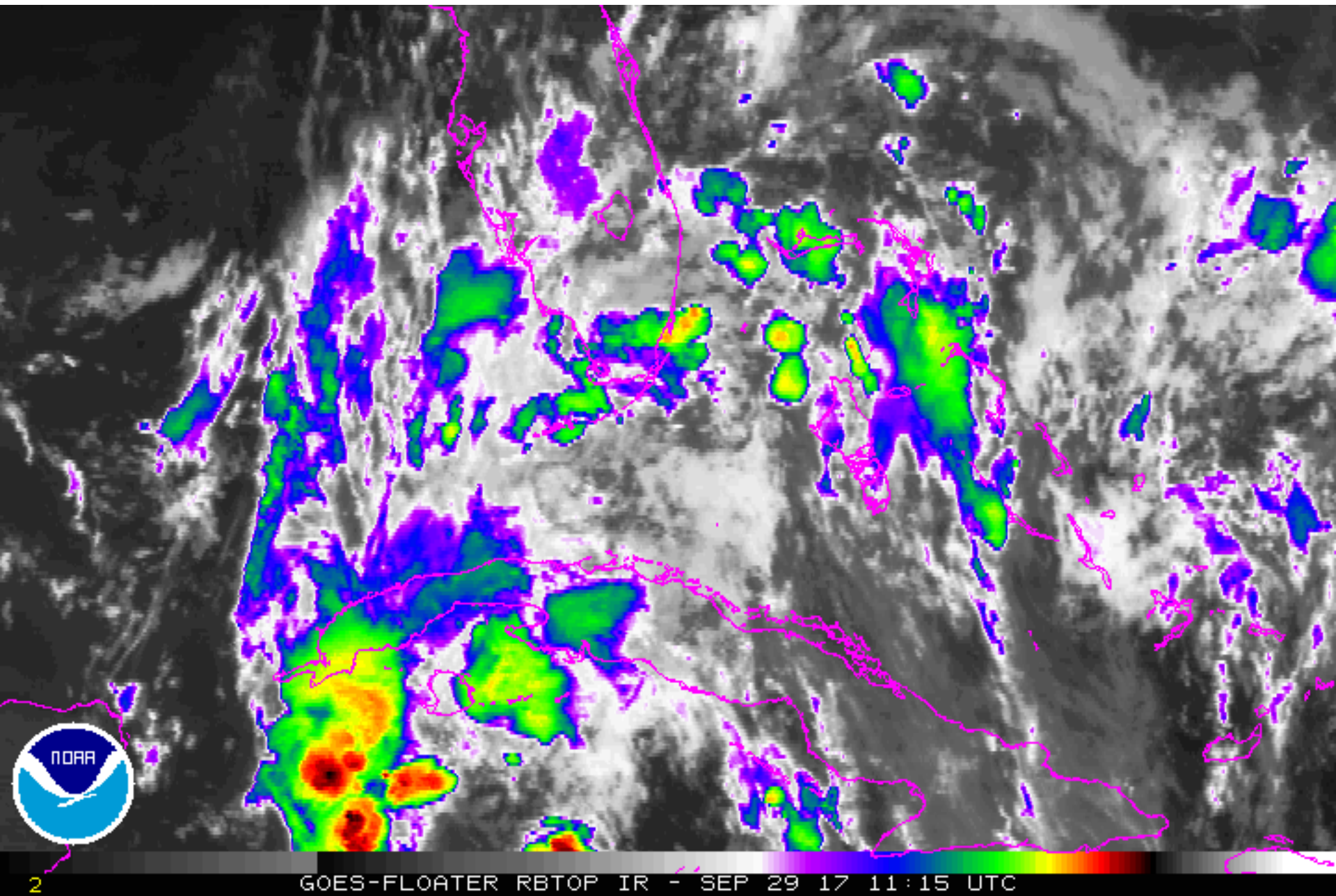


Current Disturbances and Five-Day Cyclone Formation Chance: < 40% 40-60% > 60%

Tropical or Sub-Tropical Cyclone: Depression Storm Hurricane

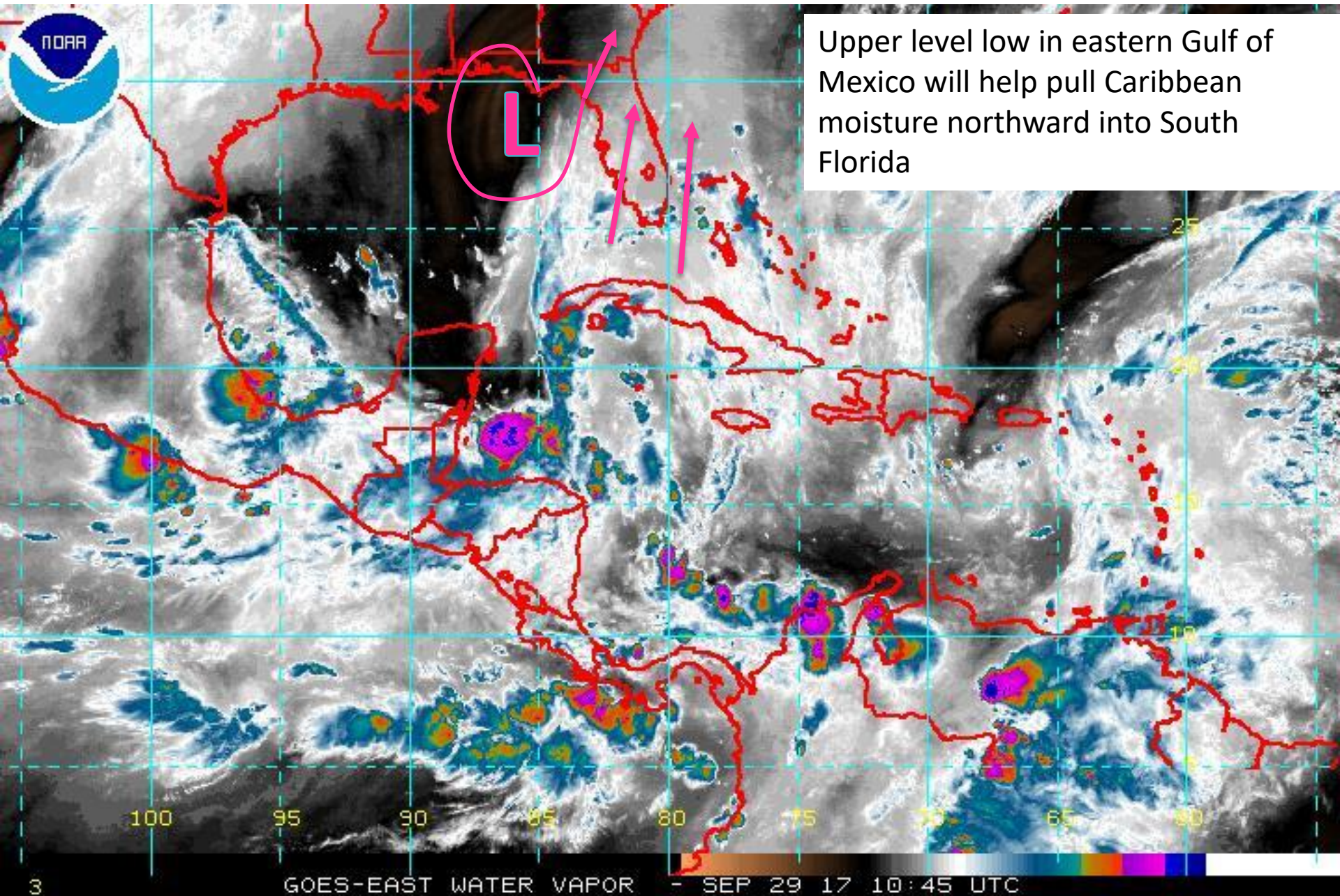
Post-Tropical Cyclone Remnants

# 99L Satellite Image

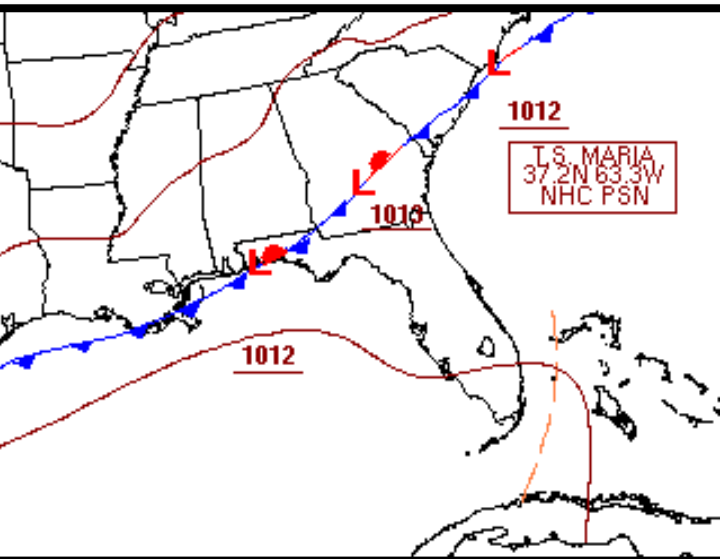




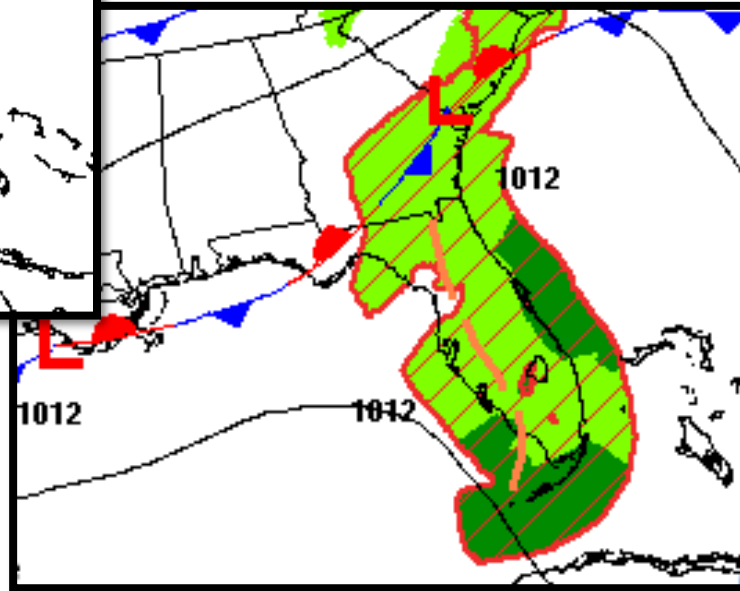
# Gulf/Caribbean Satellite Water Vapor Image



# Forecast Weather Maps

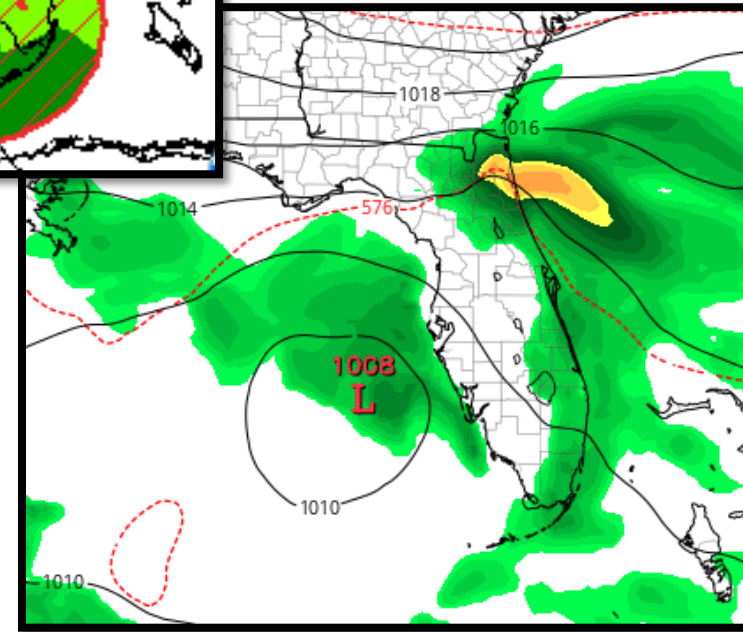


Friday



Saturday

Sunday



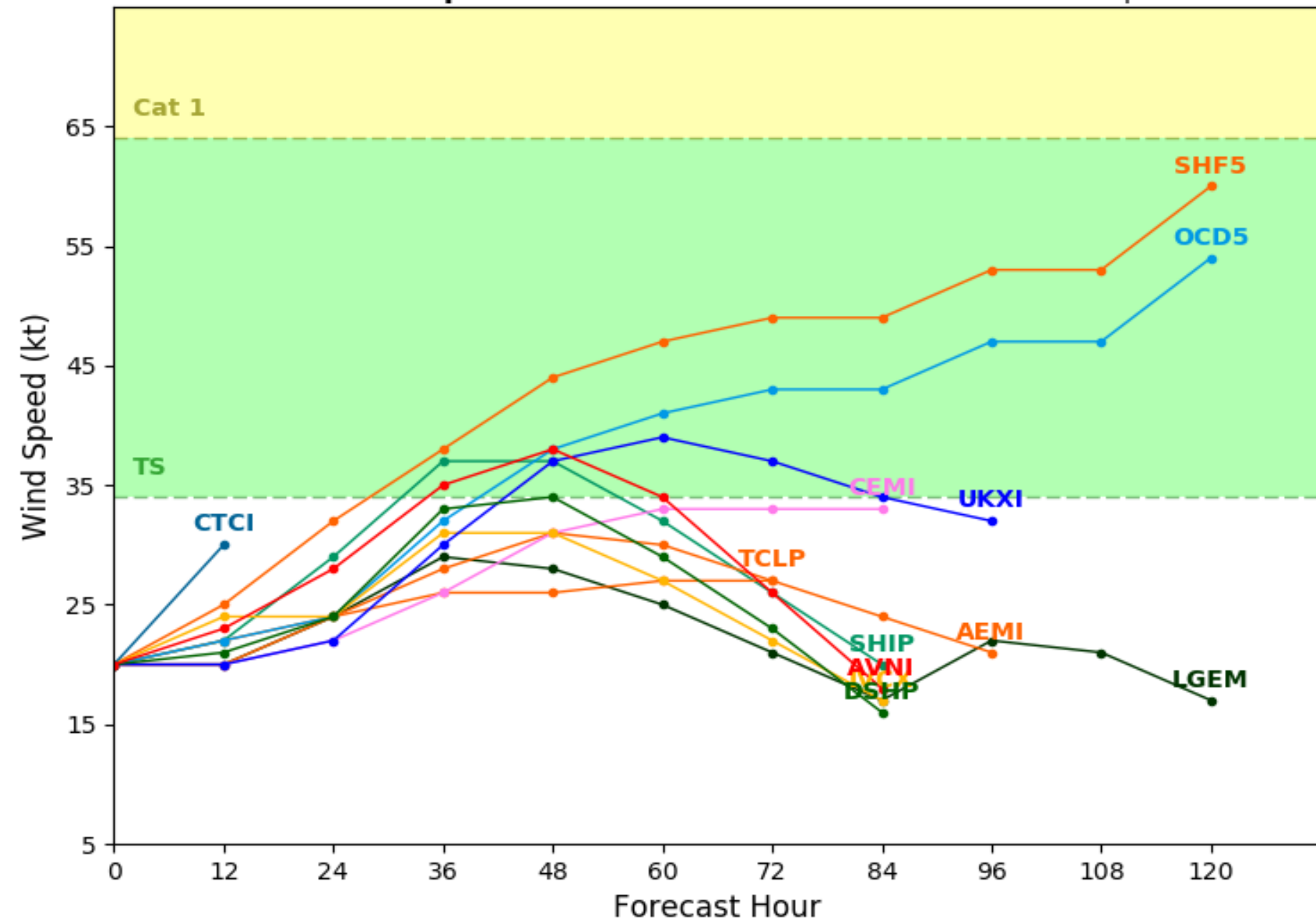
Trough is expected to cross Florida over the next 24 hours and form into an area of low pressure off the Florida West Coast on Sunday. Low is expected to weaken and dissipate as it moves northwest on Monday.



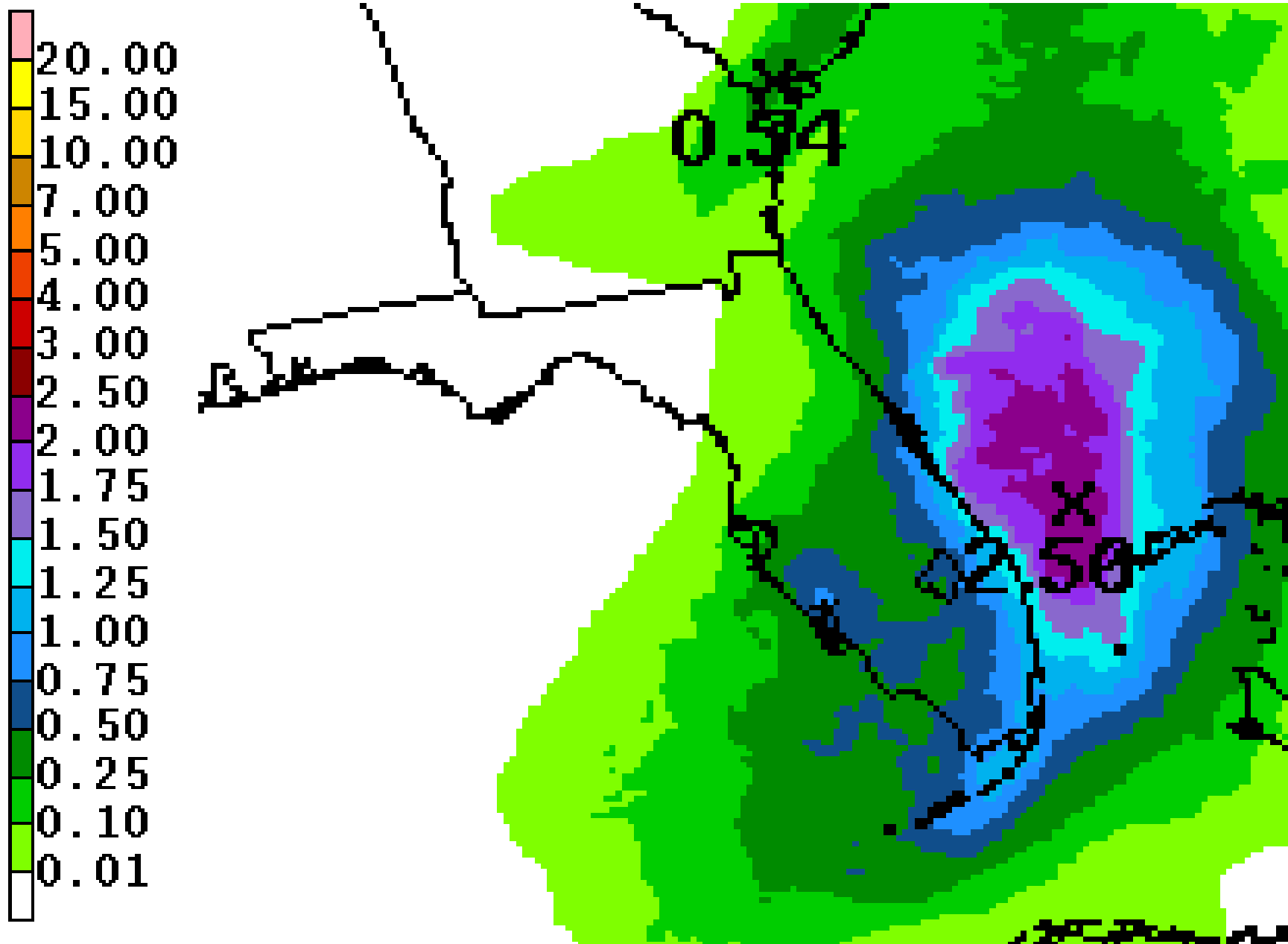
# Invest 99L Model Intensity Guidance

Initialized at 06z Sep 29 2017

Levi Cowan - tropicaltidbits.com

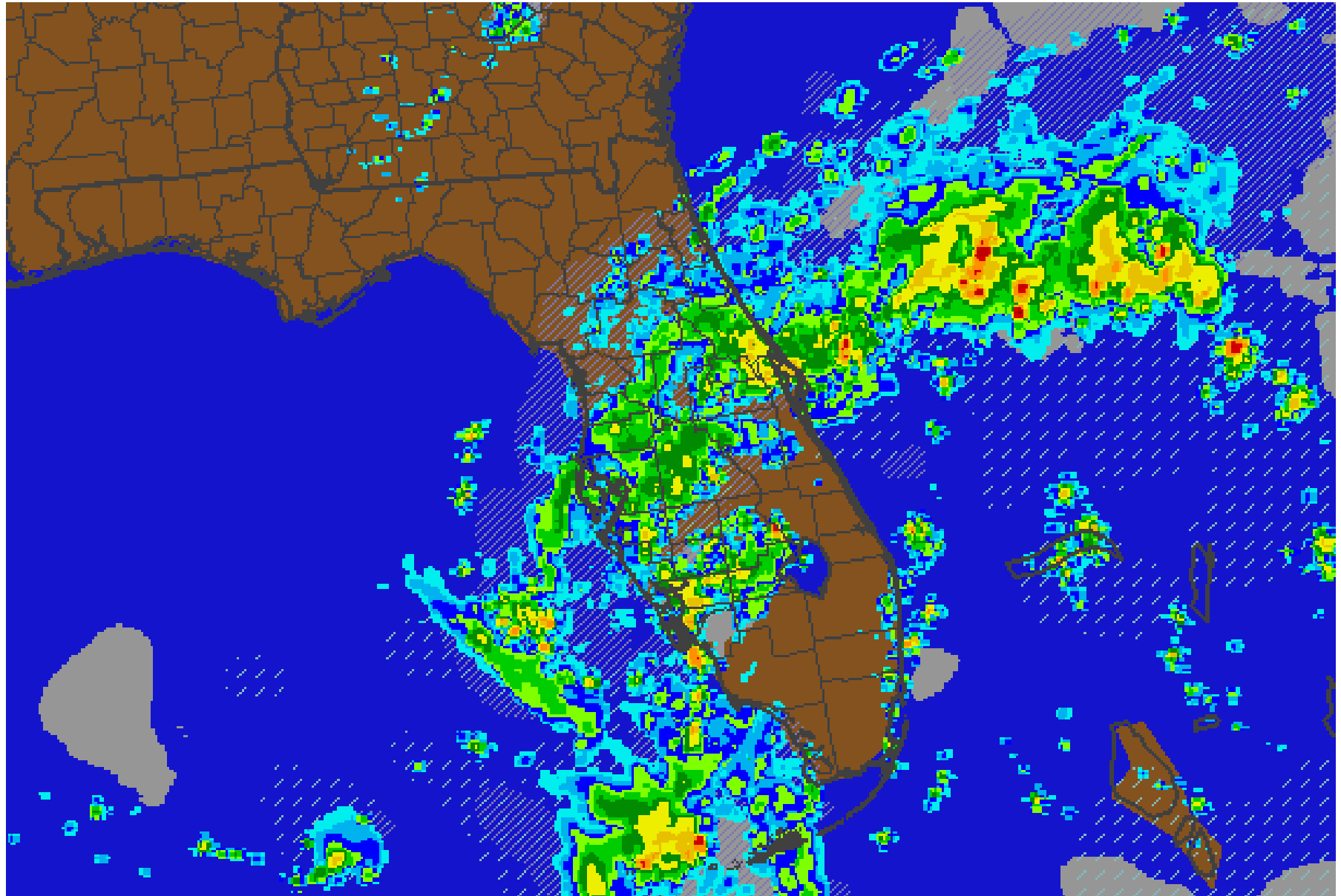


# Forecast Rainfall - Next 24 Hours





# Future Radar Forecast – Tonight 11pm

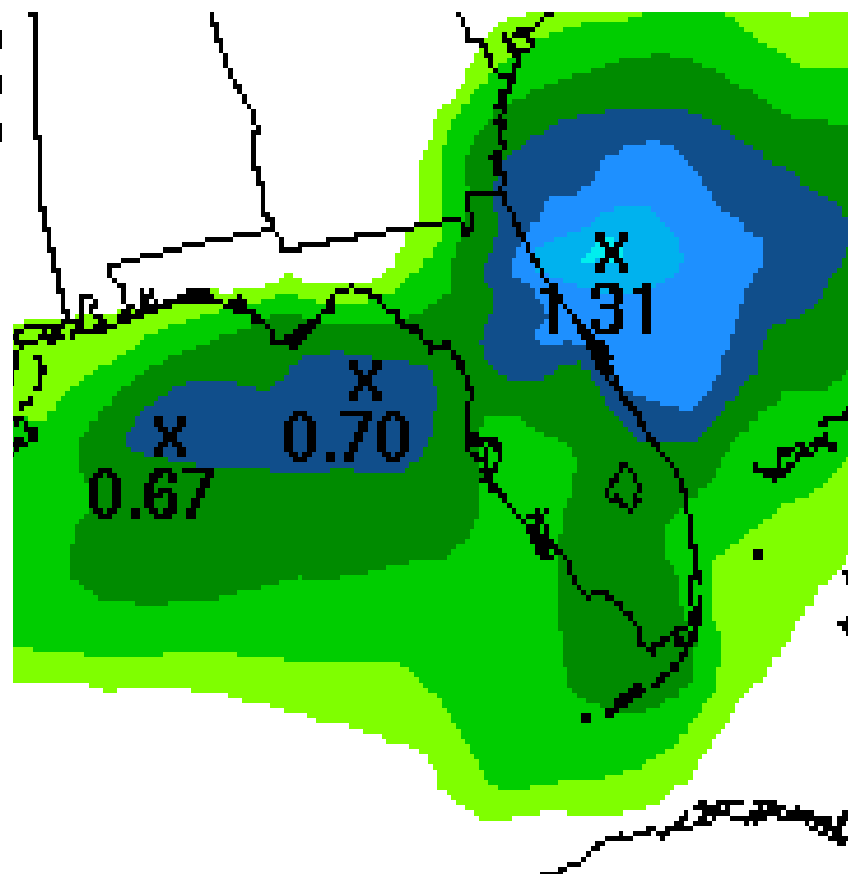
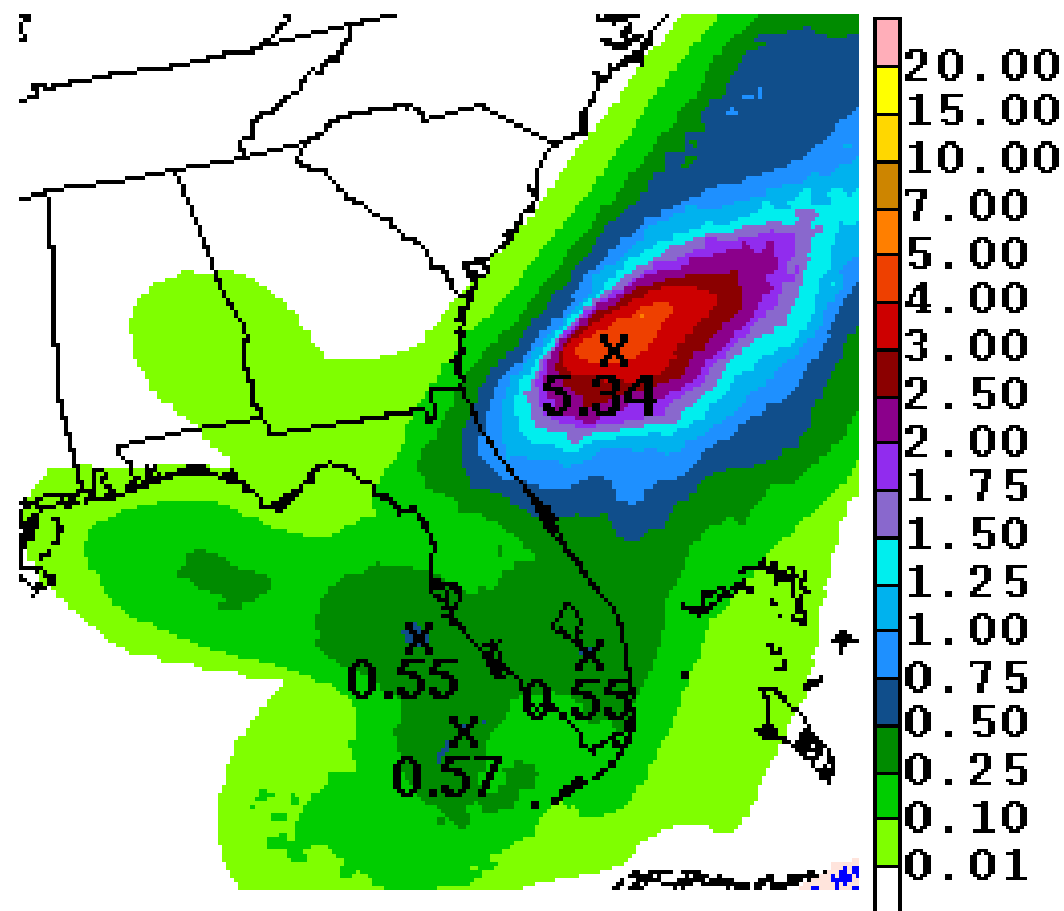


3km SIMULATED RADAR REFLECTIVITY SAT 170930/0300V017  
CLOUD (SOLID=LOW SLASH=MID DASH=HI)

# Forecast Rainfall

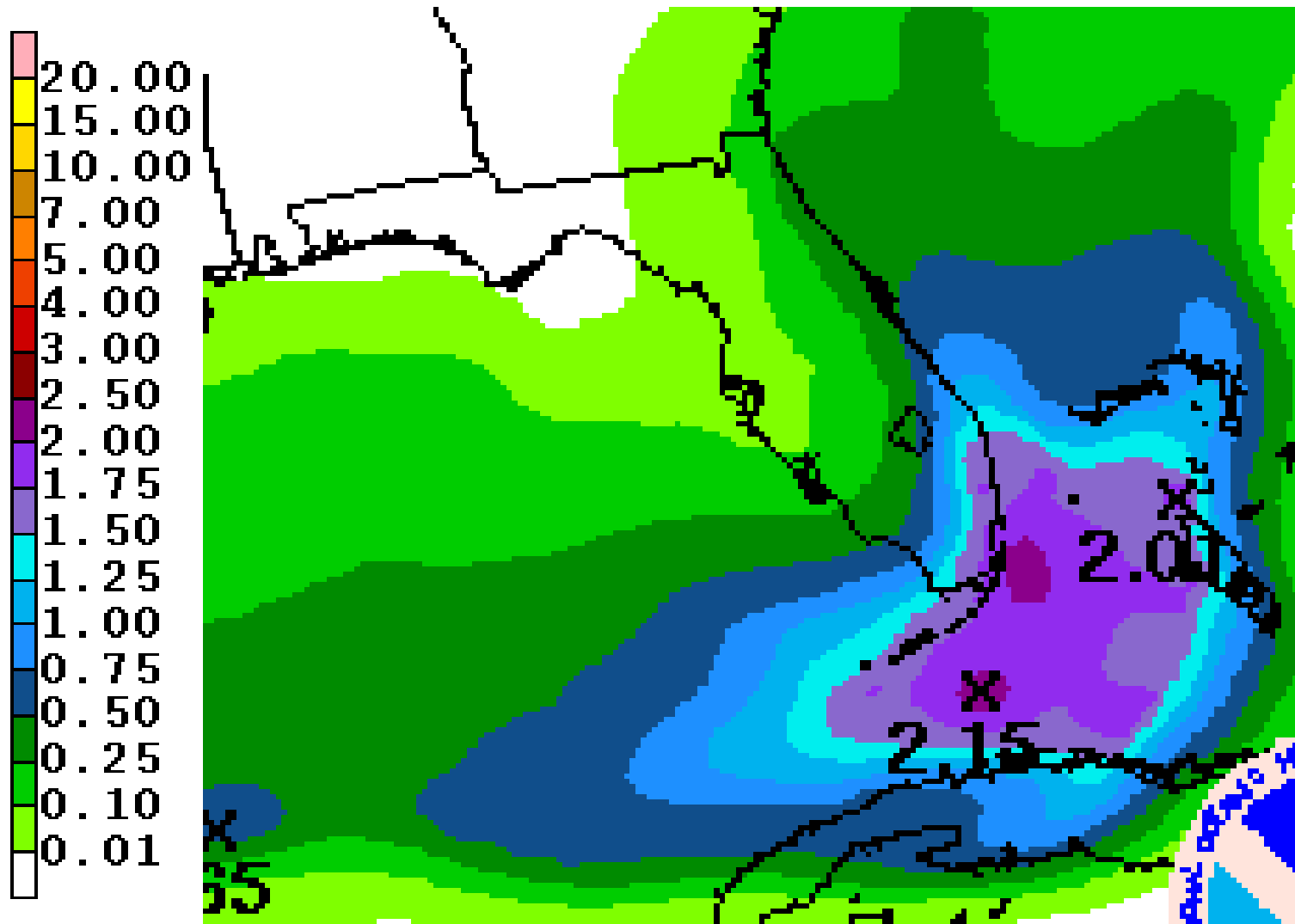
## Saturday

## Sunday



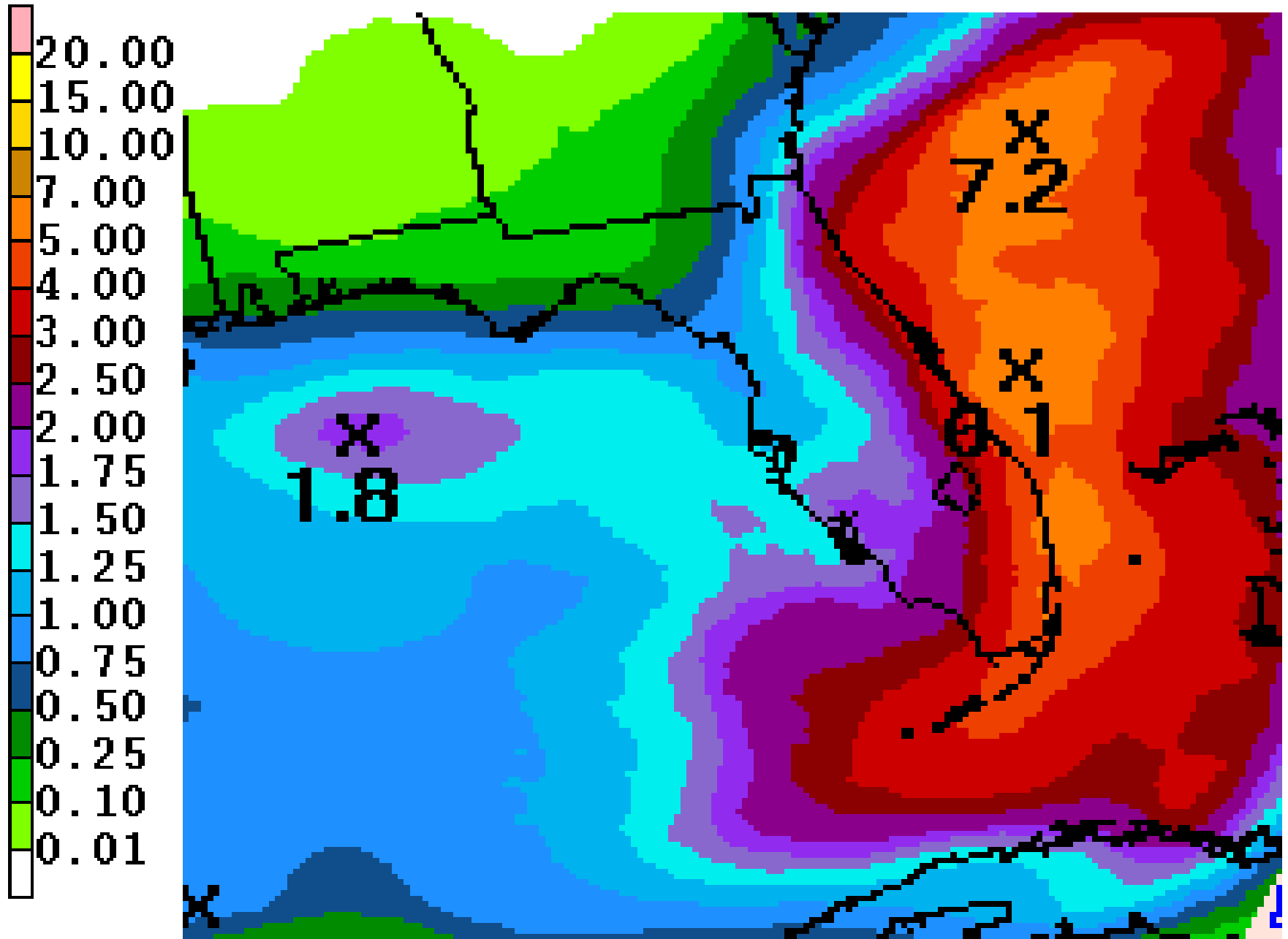
Combination of stalled front and developing low will increase rain chances across the entire Peninsula this weekend. Heaviest amounts may stay offshore but locally heavier amounts are possible.

# Forecast Rainfall – Next Wednesday/Thursday from eastern Caribbean tropical wave





# Forecast Cumulative Rainfall - Next 7 Days



# Hurricane Lee

5 AM EDT Fri Sep 29 2017

Position 38.3 N 52.4 W

Maximum Winds 75 mph

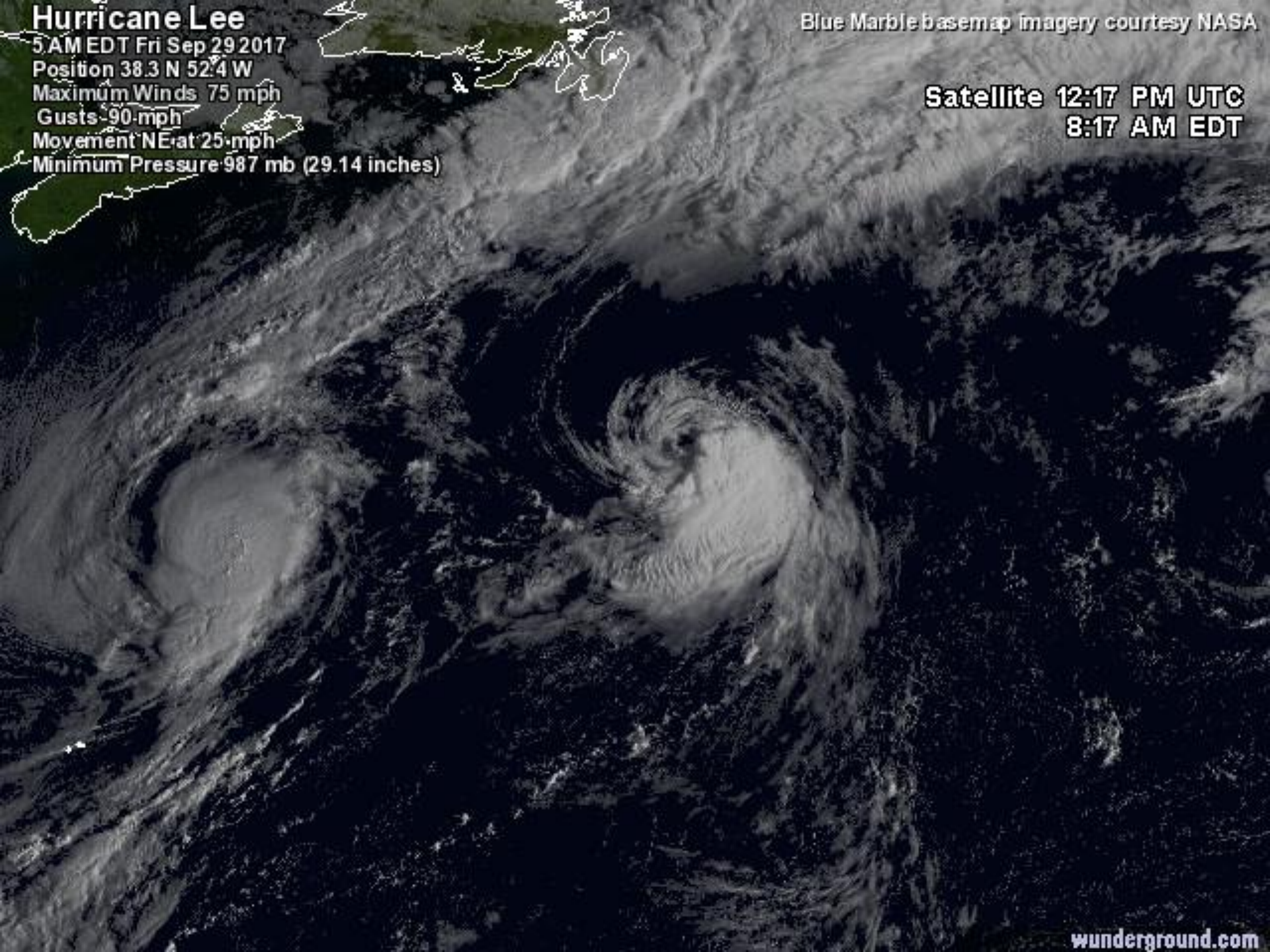
Gusts 90 mph

Movement NE at 25 mph

Minimum Pressure 987 mb (29.14 inches)

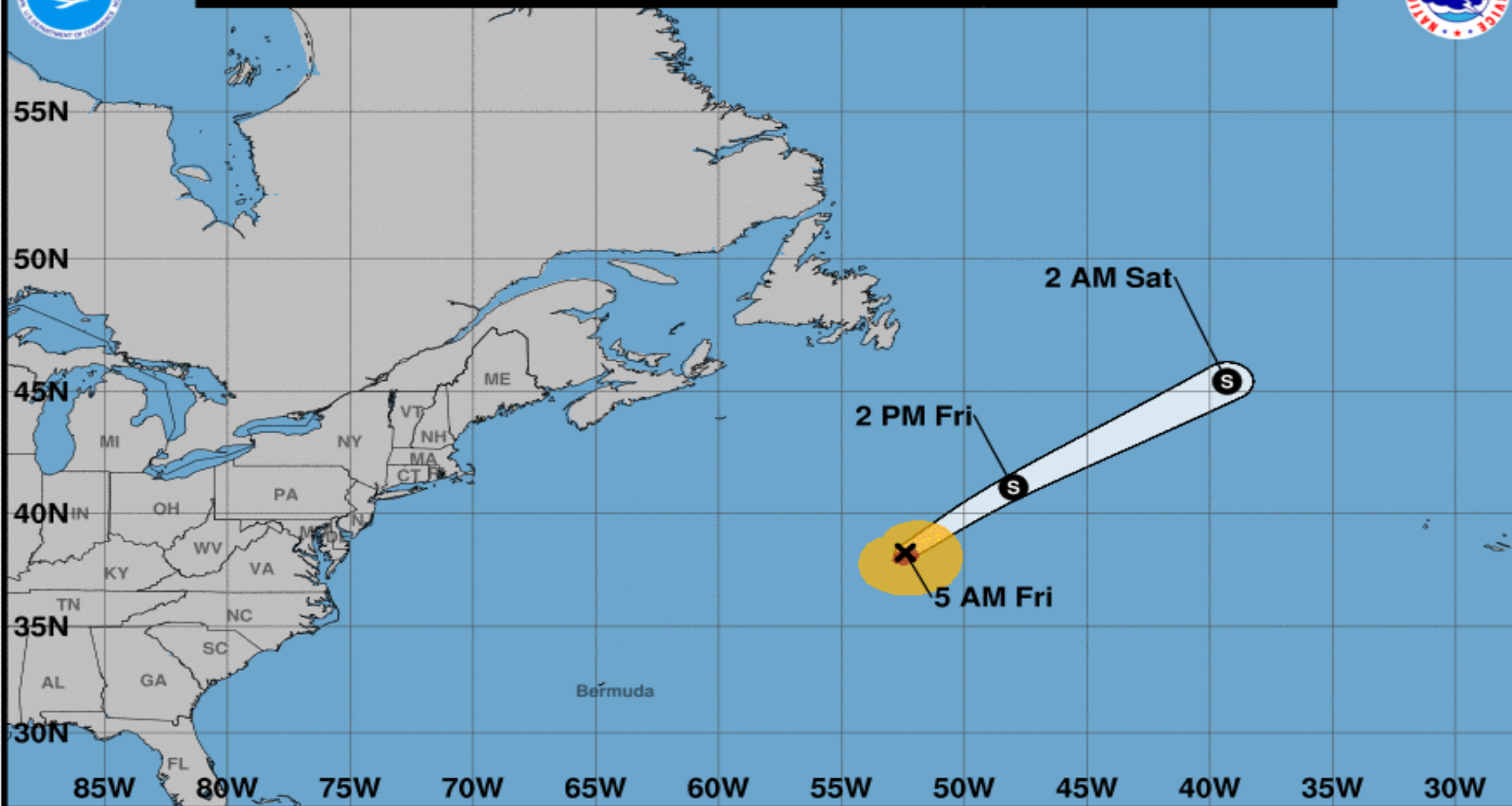
Blue Marble basemap imagery courtesy NASA

Satellite 12:17 PM UTC  
8:17 AM EDT





Note: The cone contains the probable path of the storm center but does not show the size of the storm. Hazardous conditions can occur outside of the cone.



### Hurricane Lee

Friday September 29, 2017

5 AM AST Advisory 45

NWS National Hurricane Center

### Current information: x

Center location 38.3 N 52.4 W

Maximum sustained wind 75 mph

Movement NE at 25 mph

### Forecast positions:

● Tropical Cyclone ○ Post/Potential TC

Sustained winds: D < 39 mph

S 39-73 mph H 74-110 mph M > 110 mph

### Potential track area:



Day 1-3



Day 4-5

### Watches:



Hurricane



Trop Stm

### Warnings:



Hurricane



Trop Stm

### Current wind extent:



Hurricane



Trop Stm



# Tropical Storm Maria

5 AM EDT Fri Sep 29 2017

Position 37.2 N 63.3 W

Maximum Winds 55 mph

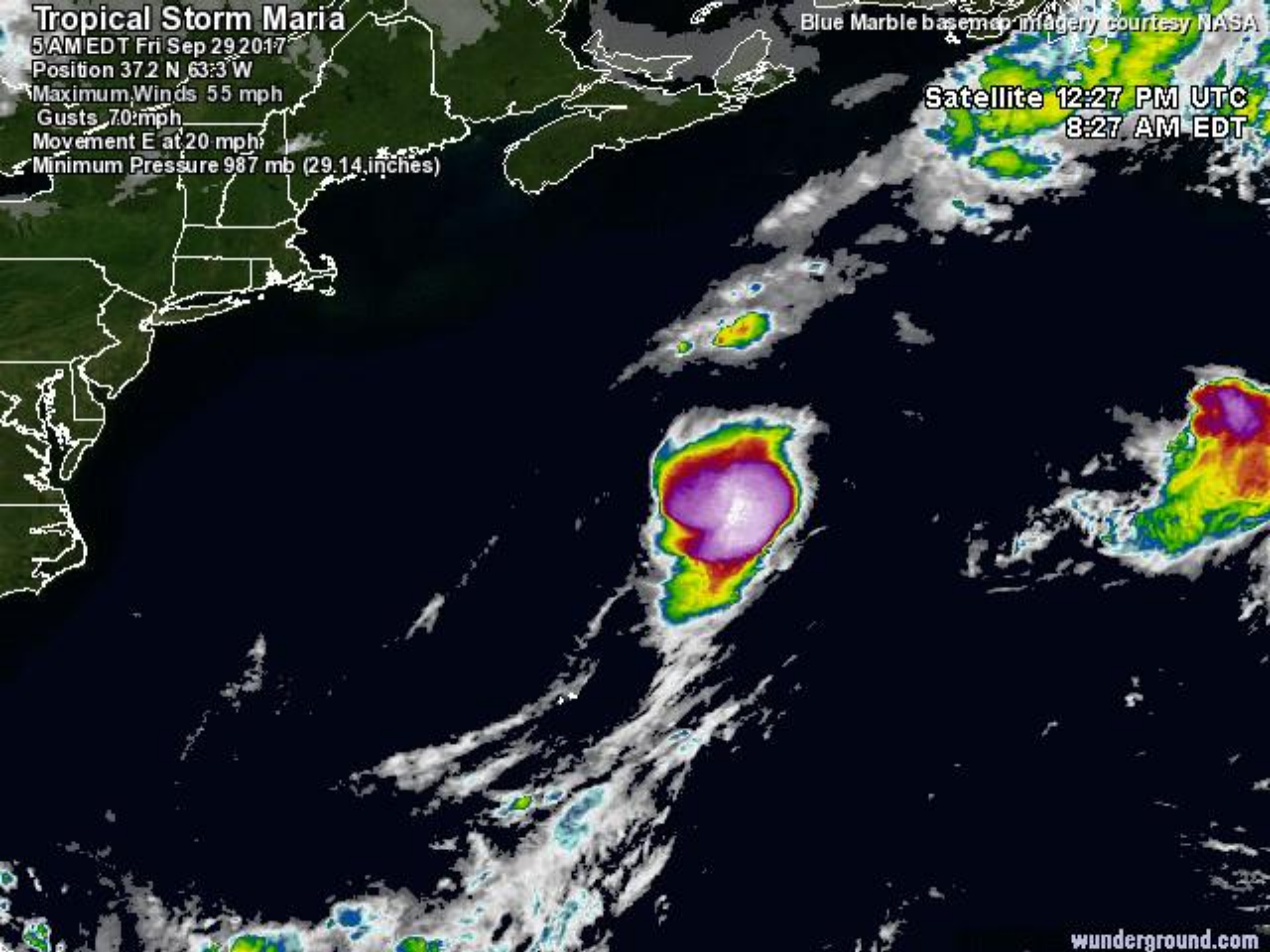
Gusts 70 mph

Movement E at 20 mph

Minimum Pressure 987 mb (29.14 inches)

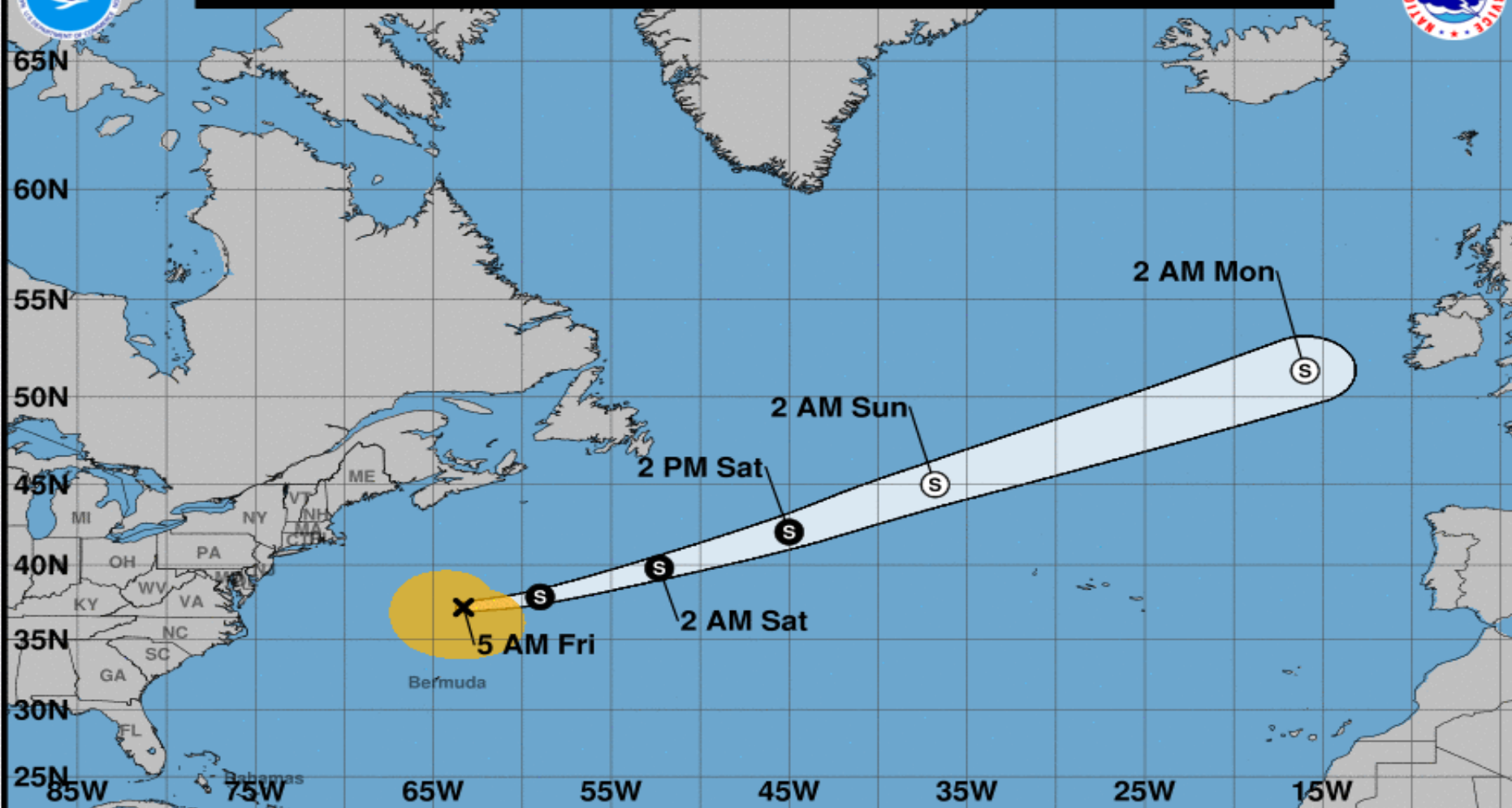
Blue Marble base map imagery courtesy NASA

Satellite 12:27 PM UTC  
8:27 AM EDT





Note: The cone contains the probable path of the storm center but does not show the size of the storm. Hazardous conditions can occur outside of the cone.



### Tropical Storm Maria

Friday September 29, 2017

5 AM AST Advisory 53

NWS National Hurricane Center

### Current information: x

Center location 37.2 N 63.3 W

Maximum sustained wind 60 mph

Movement E at 21 mph

### Forecast positions:

● Tropical Cyclone ○ Post/Potential TC

Sustained winds: D < 39 mph

S 39-73 mph H 74-110 mph M > 110 mph

### Potential track area:

Day 1-3 Day 4-5

### Watches:

Hurricane Trop Stm

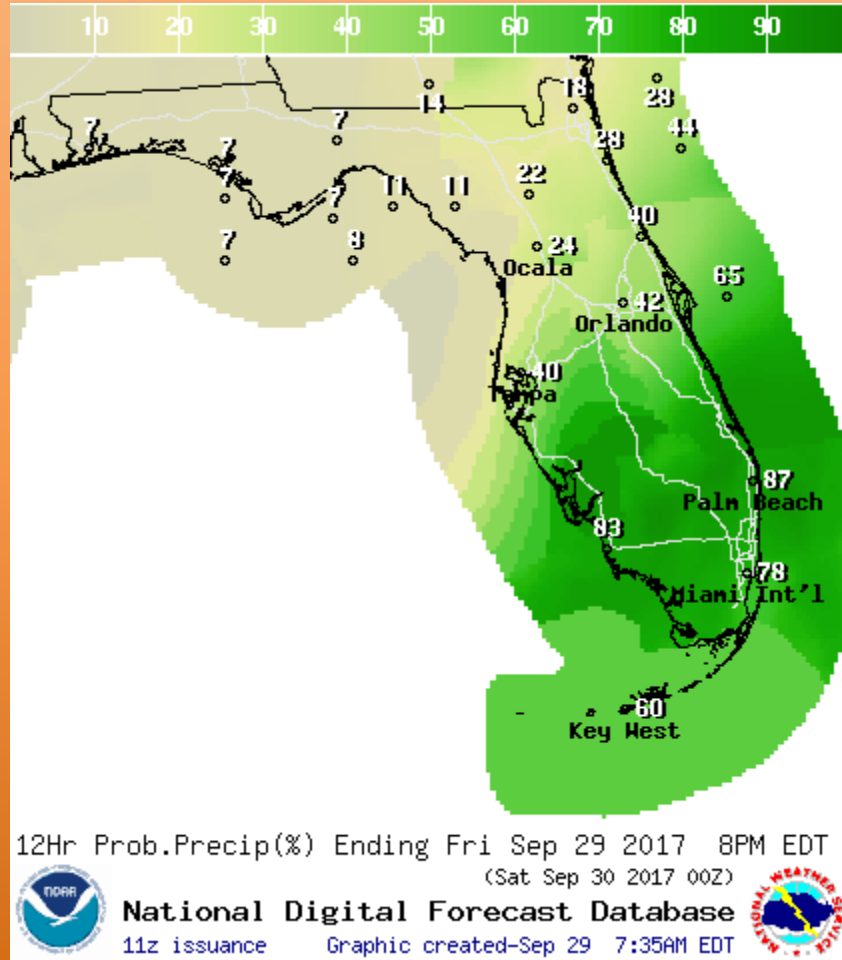
### Warnings:

Hurricane Trop Stm

### Current wind extent:

Hurricane Trop Stm

# Predominant Daytime Weather - Friday



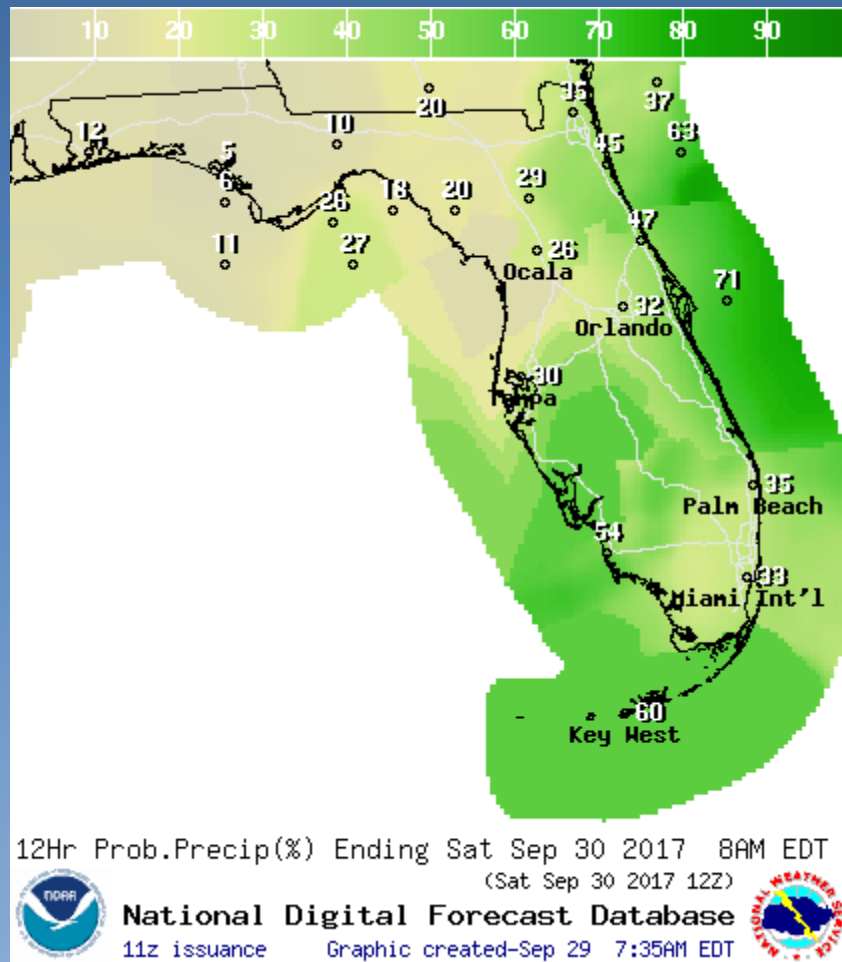
Sky: Partly-Mostly Cloudy  
E wind 5-10mph

Rain: 50-80% south of I-4 + Keys,  
20-40% northern Peninsula

Hazards:  
**Gusty Winds**  
**Lightning**  
**Heavy Downpours**



# Predominant Nighttime Weather



Sky: Partly-Mostly Cloudy  
Light and variable wind inland

Rain: 30-50% East Coast/Southwest  
FL  
60% Keys

Hazards:  
Occasional lightning  
Heavy Downpours

# Summary

- At 5am EDT Friday, Hurricane Lee was located about 810 miles northeast of Bermuda and moving quickly northeast at 25 mph.
- Maximum sustained winds have decreased to near 75 mph, making Lee a category 1 hurricane.
- Additional weakening is forecast, and Lee is expected to become a tropical storm later today. Lee will then dissipate by Saturday as it continues moving rapidly northeast.
- At 5am EDT Friday, Tropical Storm Maria was located about 350 miles north-northeast of Bermuda and moving quickly east near 21mph.
- Maximum winds have decreased to near 60 mph and Maria is expected to become an extratropical low by Saturday night.
- Elsewhere, a large area of showers and storms extending from the northwestern Caribbean Sea to Southeast Florida is associated with a broad surface trough interacting with an upper-level low.
- Since most of the activity is on the western side of the trough, computer models are in some disagreement on where a weak area of low pressure is likely to form, with some continuing to place the low formation off the Florida East Coast and two reliable models placing it on or just off the West Coast of Florida this weekend.
- Conditions are somewhat conducive for this low to acquire tropical characteristics and the National Hurricane Center is predicting a 40% (medium) chance of tropical cyclone formation.
- A Hurricane Hunter reconnaissance mission has been tentatively scheduled for Saturday afternoon.
- Significant development into a strong tropical system is not expected and regardless of development, the general impacts to Florida will be the same.
- A tropical wave is producing cloudiness and showers over the northeastern Caribbean Sea and the adjacent Atlantic waters.
- There is only a 20% (low) chance of tropical cyclone formation within the next 5 days, but rains associated with this low may impact Florida next week.

# Florida Outlook

- Regardless of development, this system, in combination with a stalled frontal boundary over northern Florida, is likely to produce locally heavy rainfall of 1-3" (with isolated amounts up to 4-5" possible) over portions of the Florida Peninsula and Florida Keys during the next 48 hours.
- There are currently no Flood Watches in effect, but could be issued later today as computer models come into better agreement on rainfall.
- Persistent east winds will have the potential to produce elevated tides (especially along the St. Johns River) and high waves that could result in additional coastal erosion during high tide.

Another briefing packet will be issued Friday afternoon. For more information, visit the NHC website at [www.hurricanes.gov](http://www.hurricanes.gov).





# TROPICAL UPDATE

Created by:

Amy Godsey, Chief State Meteorologist

[amy.godsey@em.myflorida.com](mailto:amy.godsey@em.myflorida.com)

State Meteorological Support Unit

Florida Division of Emergency Management

Users wishing to subscribe (approval pending) to this distribution list, register at  
[https://public.govdelivery.com/accounts/FLDEM/subscriber/new?topic\\_id=SERT\\_Met\\_Tropics](https://public.govdelivery.com/accounts/FLDEM/subscriber/new?topic_id=SERT_Met_Tropics).

Other reports available for subscription are available at

<https://public.govdelivery.com/accounts/FLDEM/subscriber/new?preferences=true>