



TROPICAL UPDATE

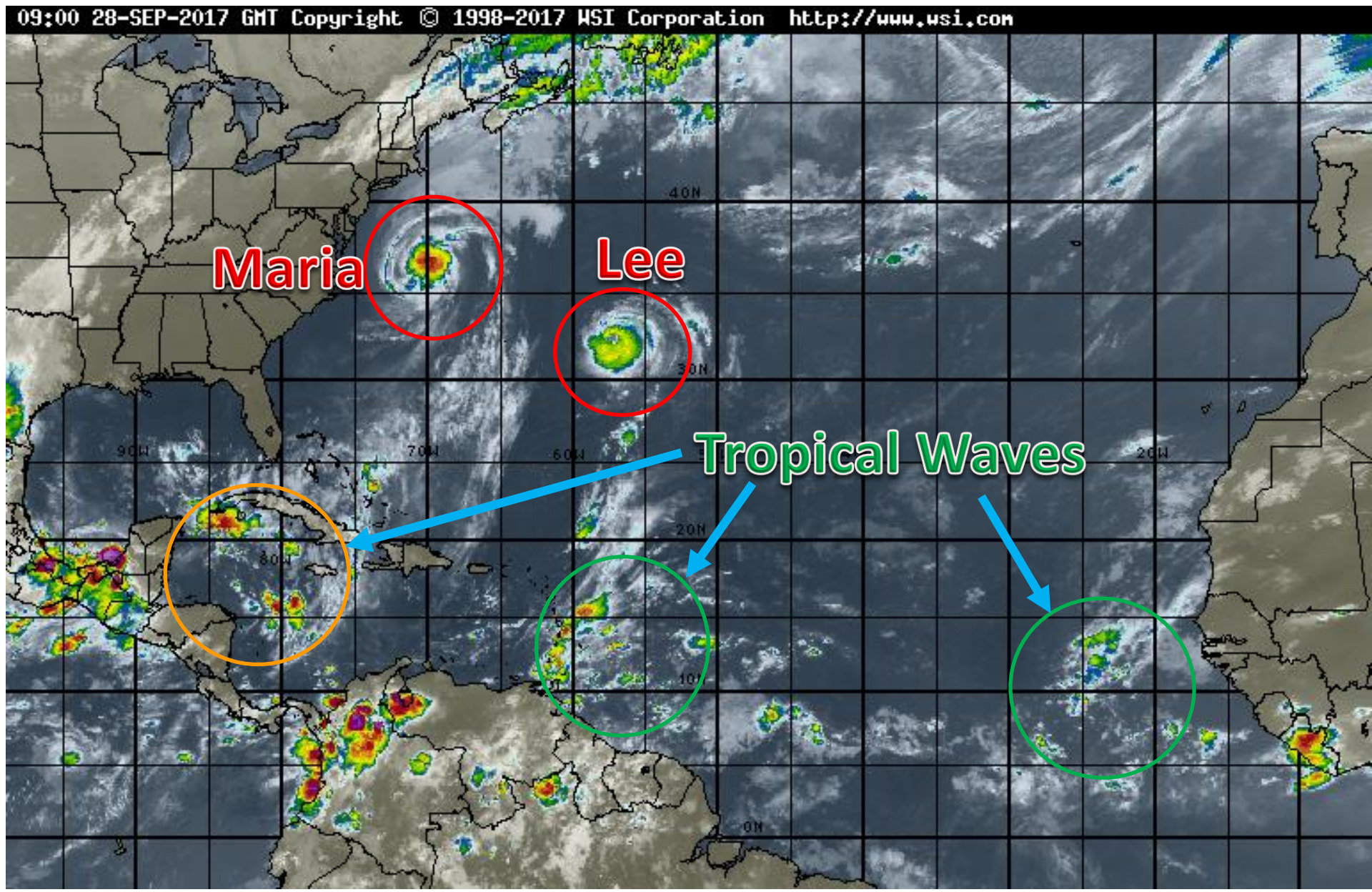
9 AM EDT

Thursday, September 28, 2017

**Hurricane Lee, Tropical Storm Maria &
Caribbean Disturbance (40%)**

This update is intended for government and emergency response officials, and is provided for informational and situational awareness purposes only. Forecast conditions are subject to change based on a variety of environmental factors. For additional information, or for any life safety concerns with an active weather event please contact your County Emergency Management or Public Safety Office, local National Weather Service forecast office or visit the National Hurricane Center website at www.nhc.noaa.gov.

Atlantic Basin Satellite Image





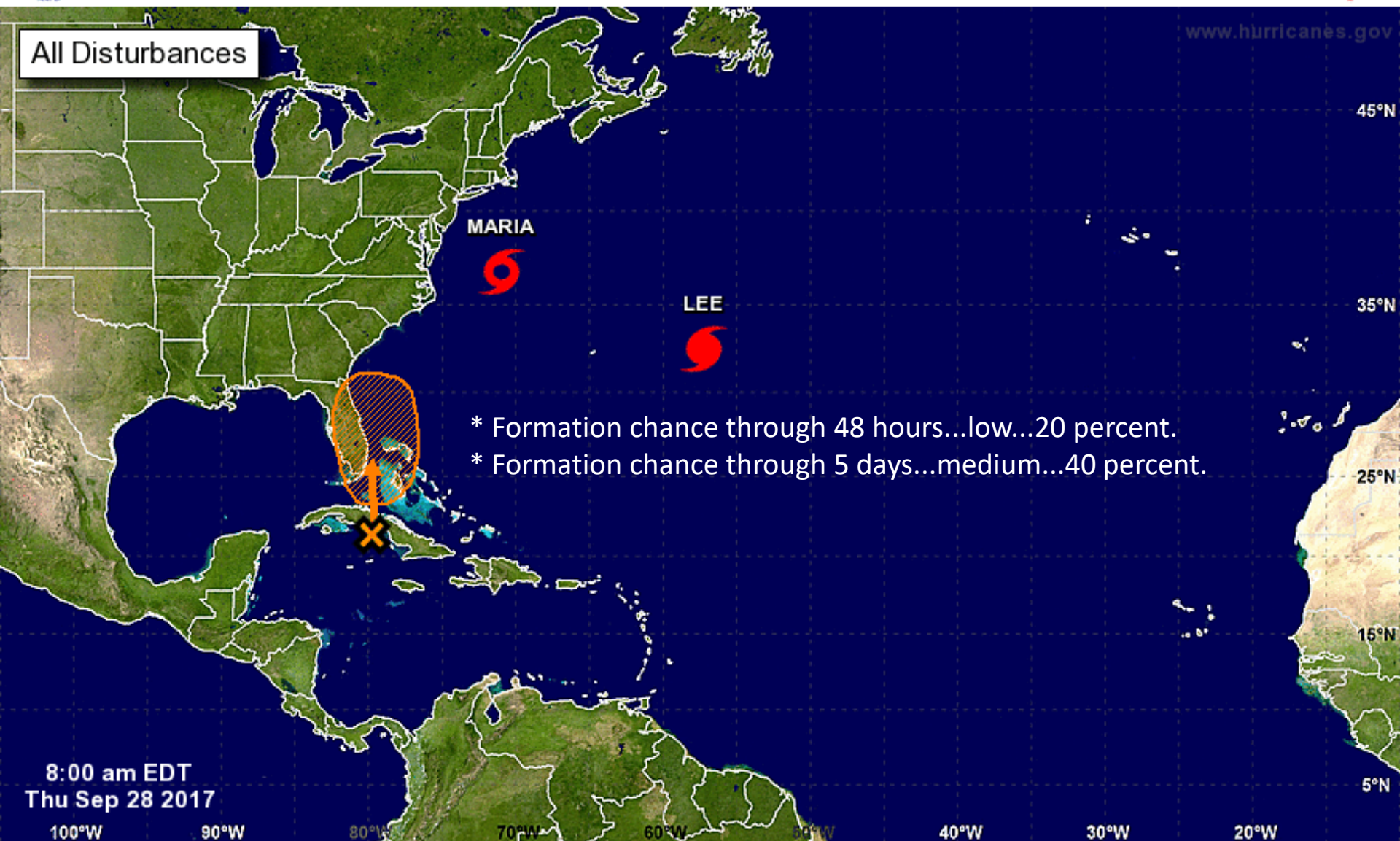
Five-Day Graphical Tropical Weather Outlook

National Hurricane Center Miami, Florida



www.hurricanes.gov

All Disturbances

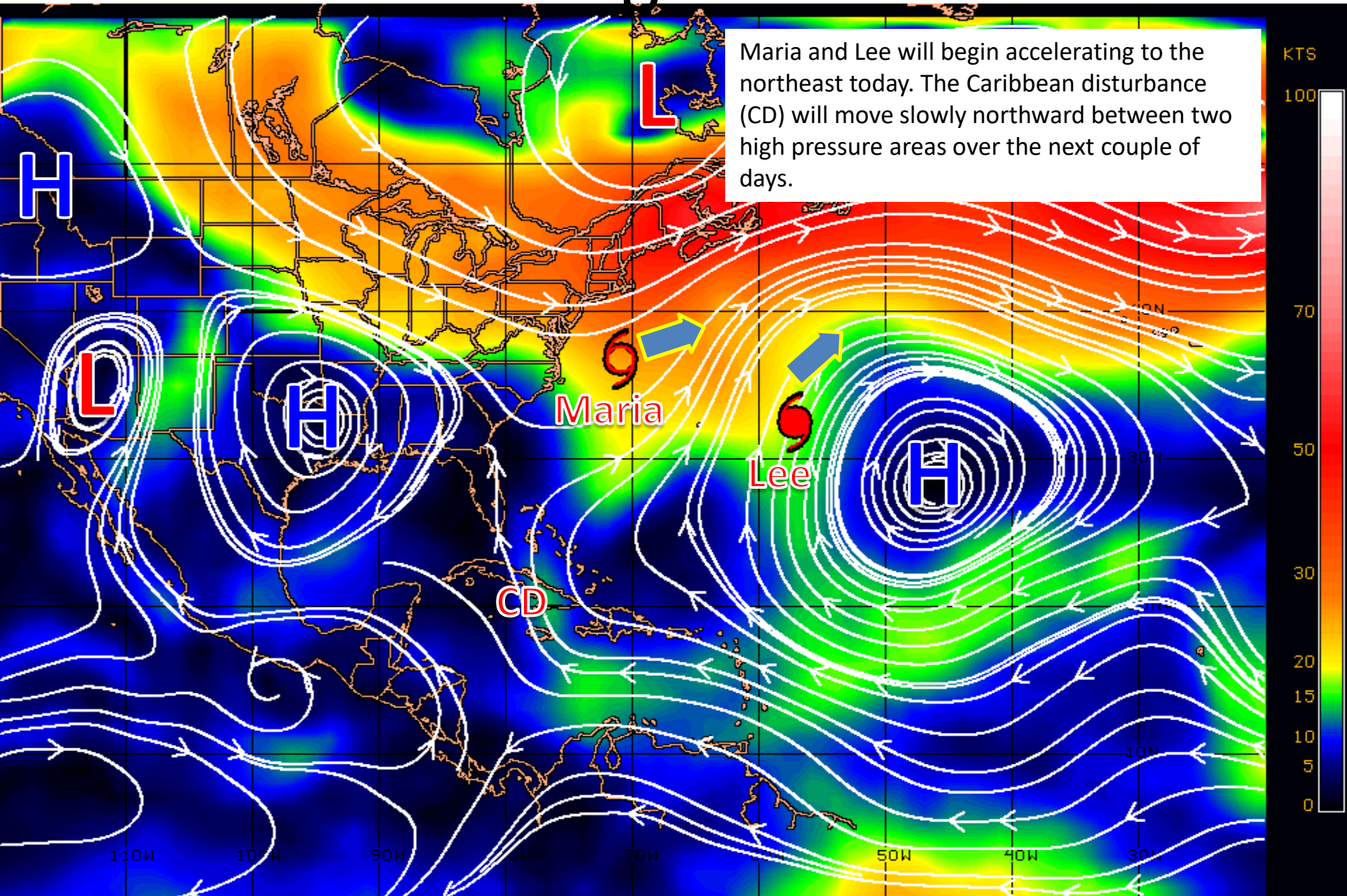


Current Disturbances and Five-Day Cyclone Formation Chance: < 40% 40-60% > 60%

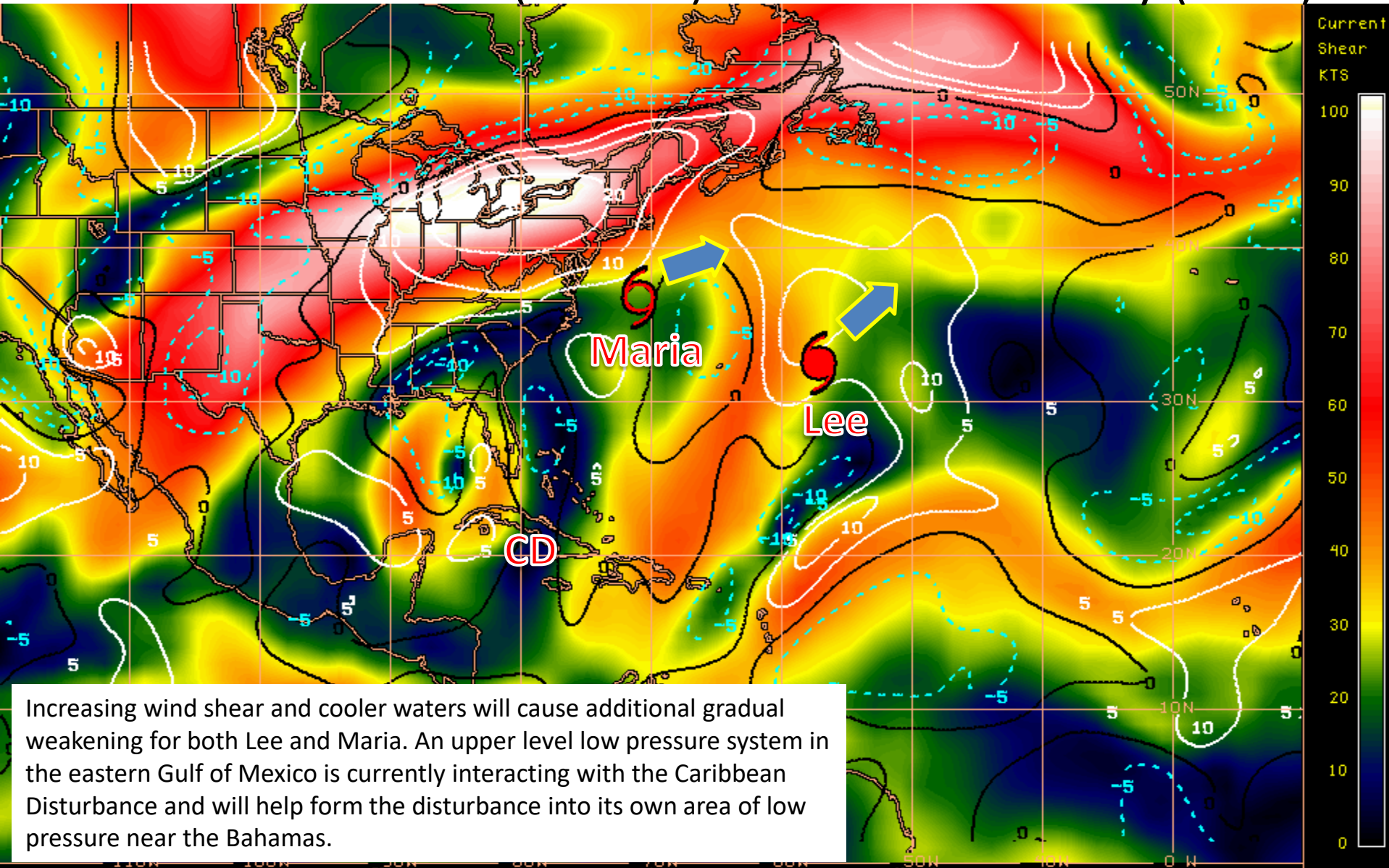
Tropical or Sub-Tropical Cyclone: Depression Storm Hurricane

Post-Tropical Cyclone Remnants

Steering Currents



Current Wind Shear (Shaded) and Shear Tendency (Lines)



Increasing wind shear and cooler waters will cause additional gradual weakening for both Lee and Maria. An upper level low pressure system in the eastern Gulf of Mexico is currently interacting with the Caribbean Disturbance and will help form the disturbance into its own area of low pressure near the Bahamas.

Hurricane Lee

5 AM EDT Thu Sep 28 2017

Position 32.5 N 57.2 W

Maximum Winds 110 mph

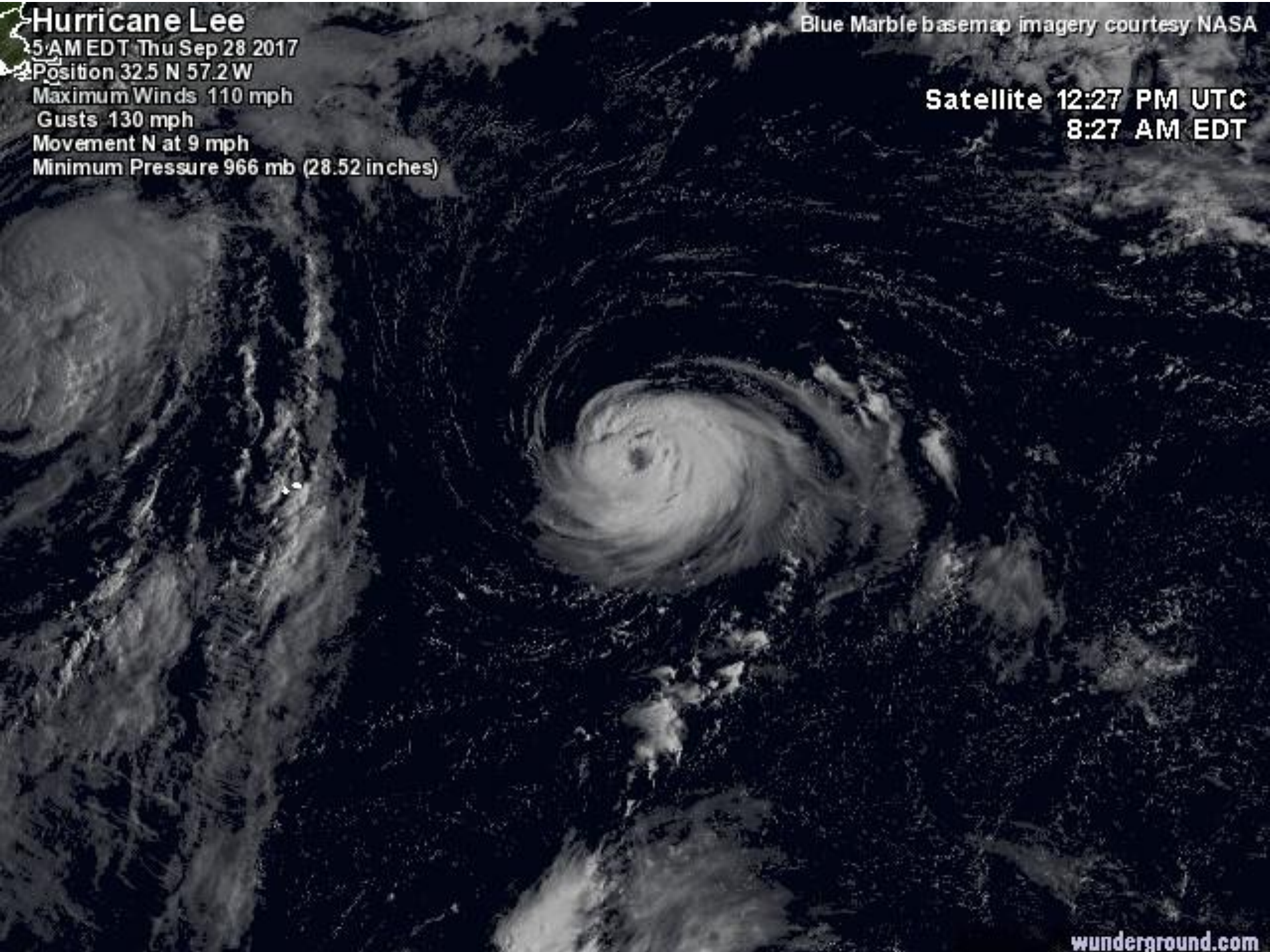
Gusts 130 mph

Movement N at 9 mph

Minimum Pressure 966 mb (28.52 inches)

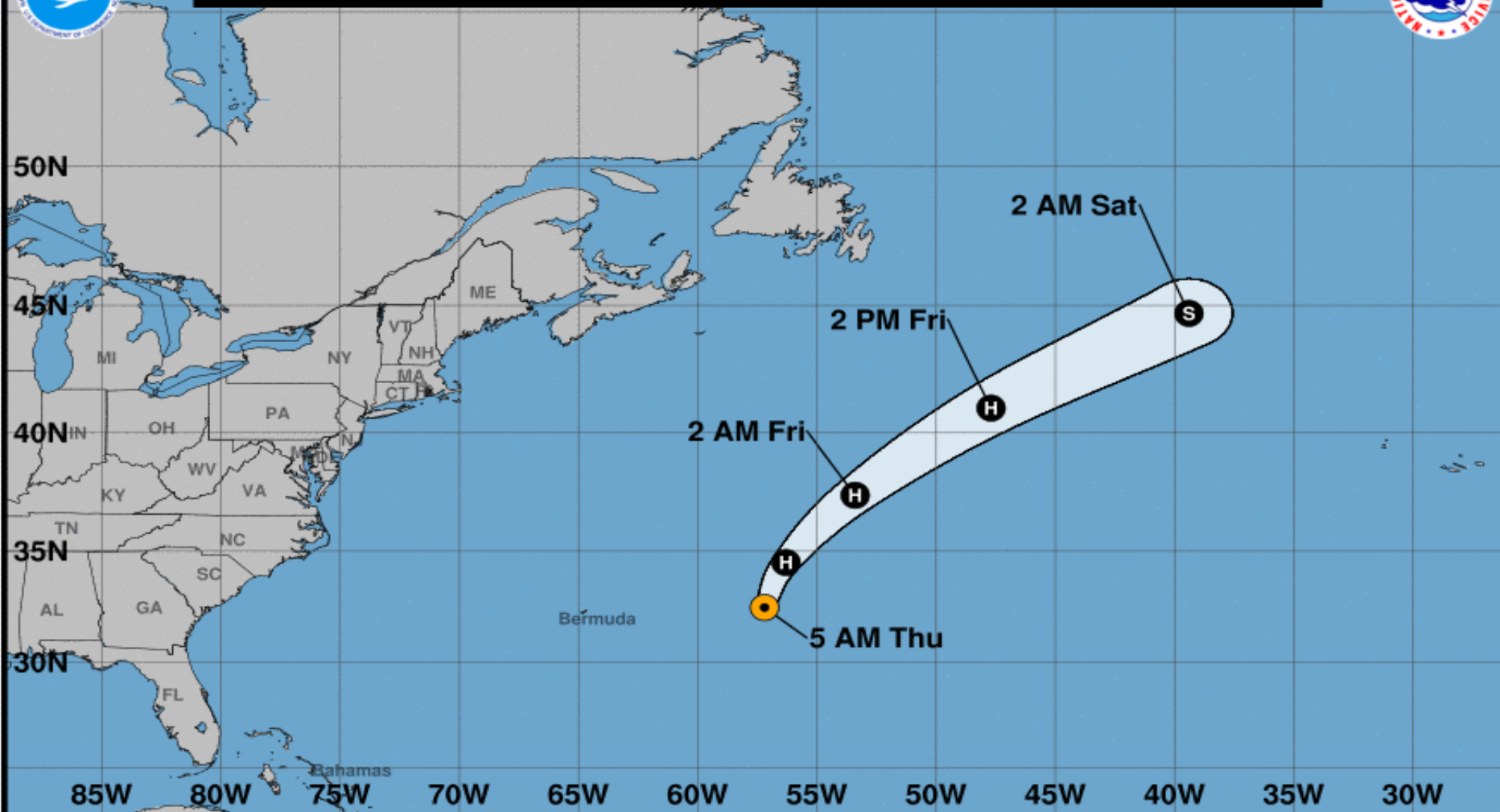
Blue Marble basemap imagery courtesy NASA

Satellite 12:27 PM UTC
8:27 AM EDT





Note: The cone contains the probable path of the storm center but does not show the size of the storm. Hazardous conditions can occur outside of the cone.



Hurricane Lee

Thursday September 28, 2017
5 AM AST Advisory 41
NWS National Hurricane Center

Current information:

Center location 32.5 N 57.2 W
Maximum sustained wind 110 mph
Movement N at 9 mph

Forecast positions:

● Tropical Cyclone ○ Post/Potential TC
Sustained winds: D < 39 mph
S 39-73 mph H 74-110 mph M > 110 mph

Potential track area:

Day 1-3 Day 4-5

Watches:

Hurricane Trop Storm

Warnings:

Hurricane Trop Storm

Tropical Storm Maria

5 AM EDT, Thu Sep 28 2017

Position: 36.8°N 71.0°W

Maximum Winds 70 mph

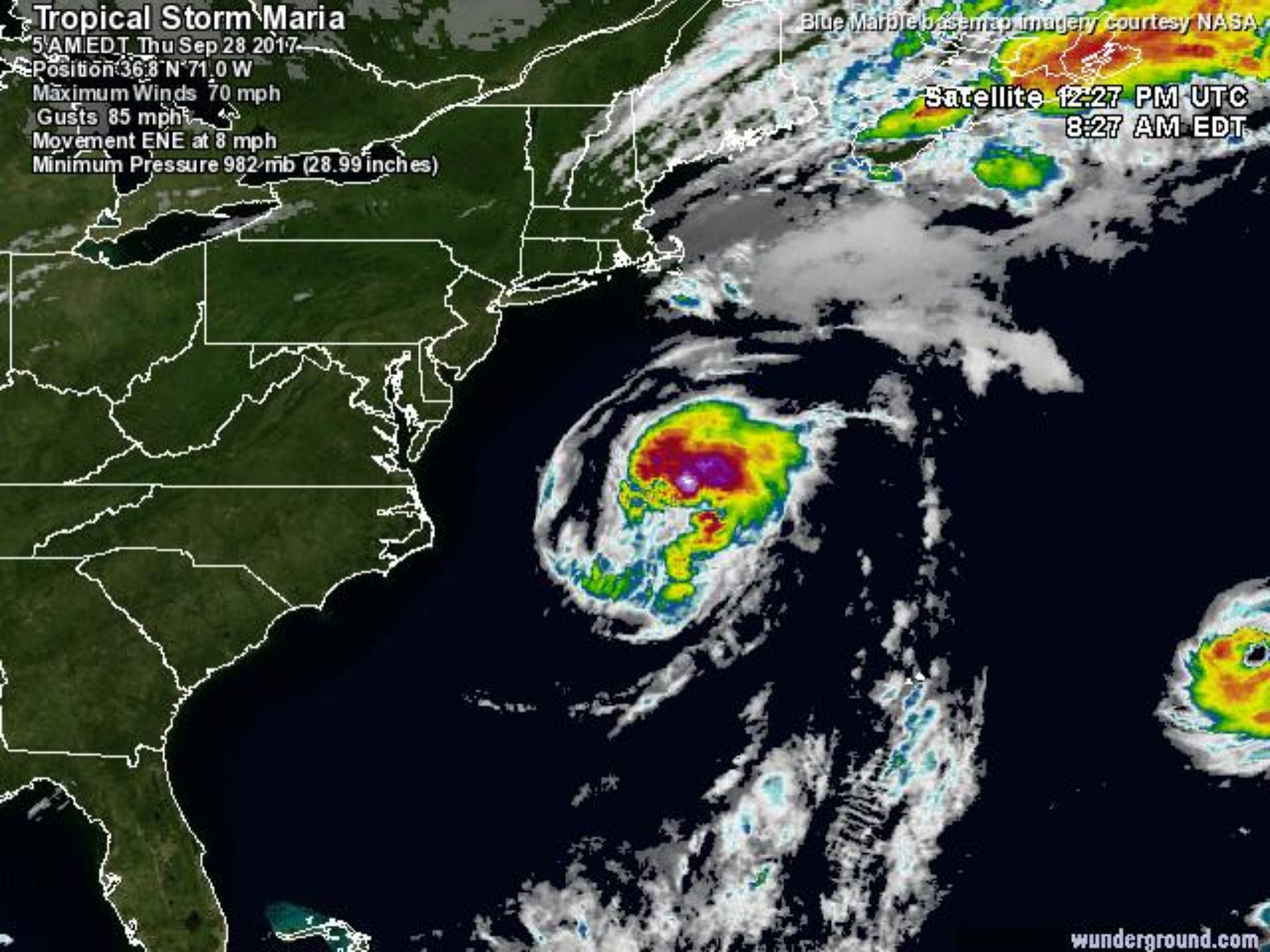
Gusts 85 mph

Movement ENE at 8 mph

Minimum Pressure 982 mb (28.99 inches)

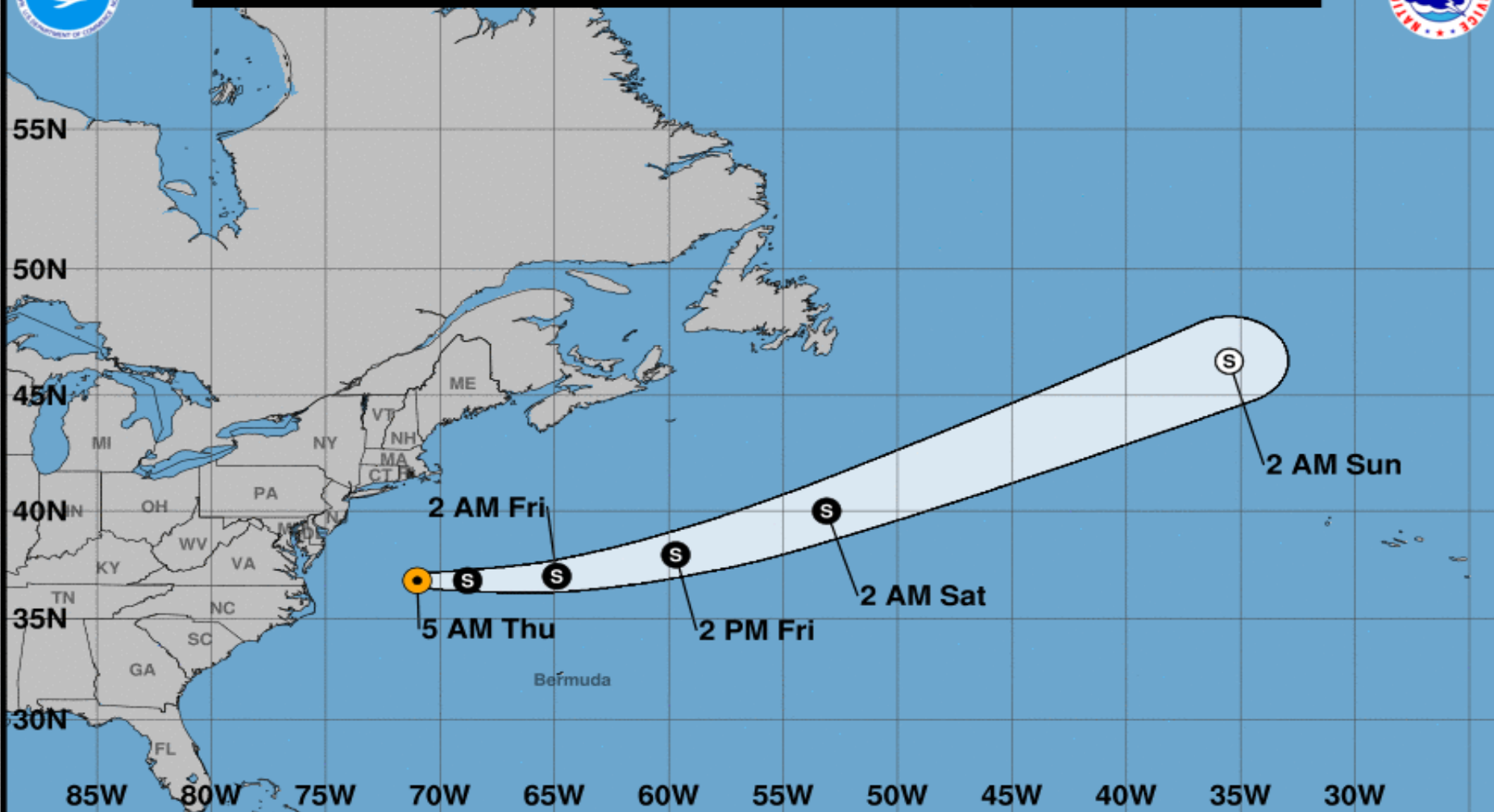
Blue Marble basemap imagery courtesy NASA

Satellite 12:27 PM UTC
8:27 AM EDT





Note: The cone contains the probable path of the storm center but does not show the size of the storm. Hazardous conditions can occur outside of the cone.



Tropical Storm Maria

Thursday September 28, 2017

5 AM EDT Advisory 49

NWS National Hurricane Center

Current information: ●

Center location 36.8 N 71.0 W

Maximum sustained wind 70 mph

Movement ENE at 8 mph

Forecast positions:

● Tropical Cyclone ○ Post/Potential TC

Sustained winds: D < 39 mph

S 39-73 mph H 74-110 mph M > 110 mph

Potential track area:



Day 1-3



Day 4-5

Watches:



Hurricane



Trop Storm

Warnings:



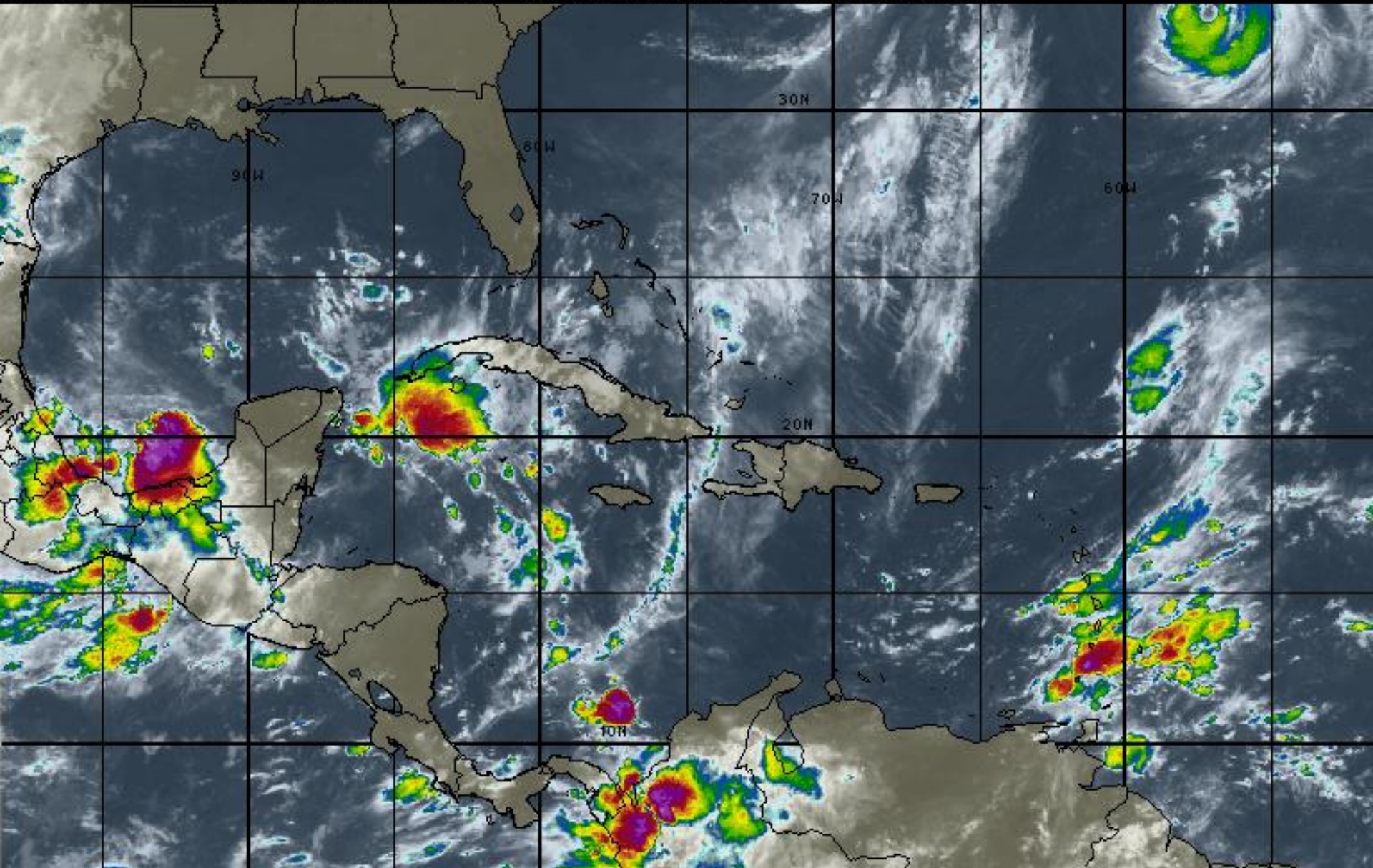
Hurricane



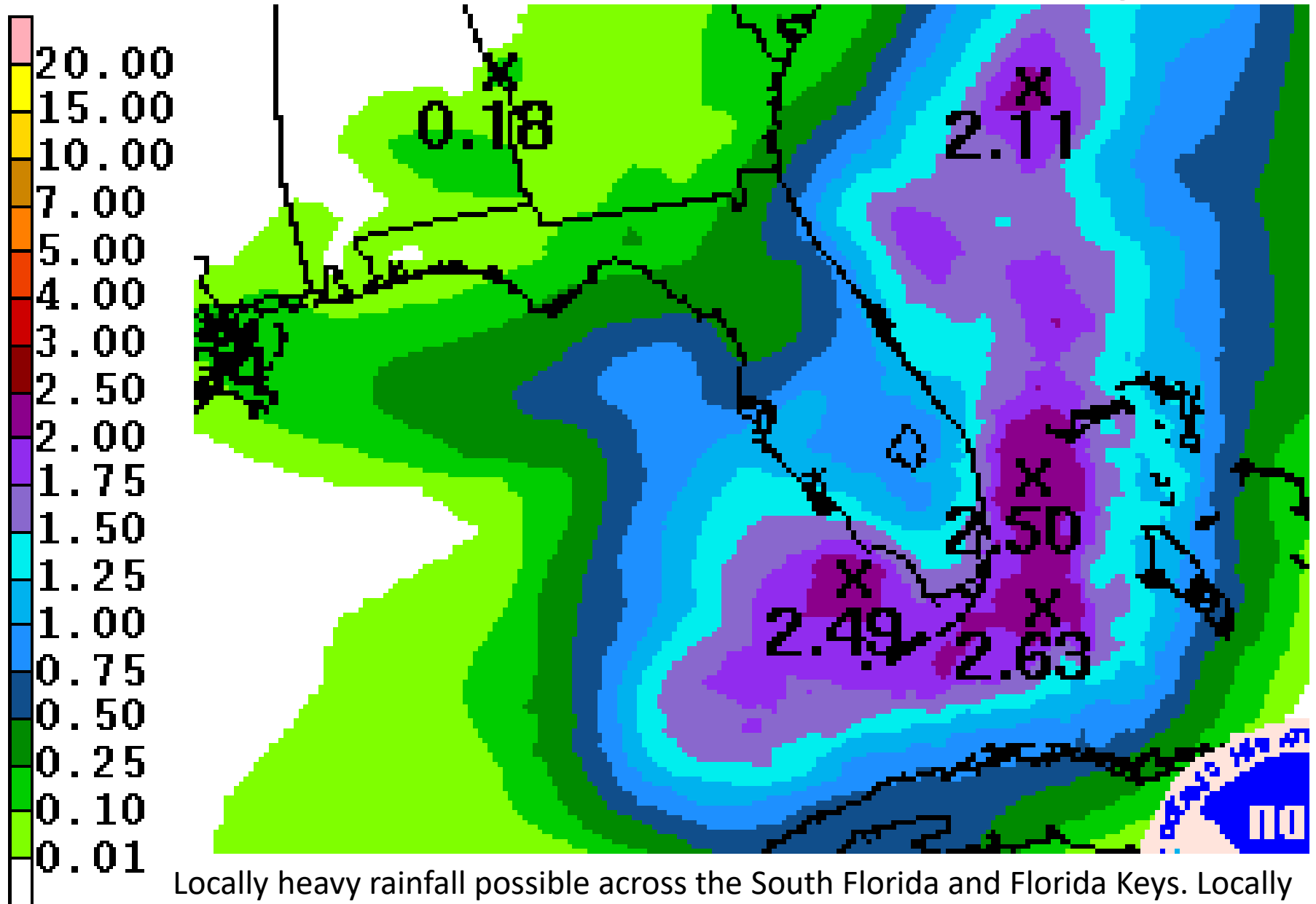
Trop Storm

Caribbean Satellite Image

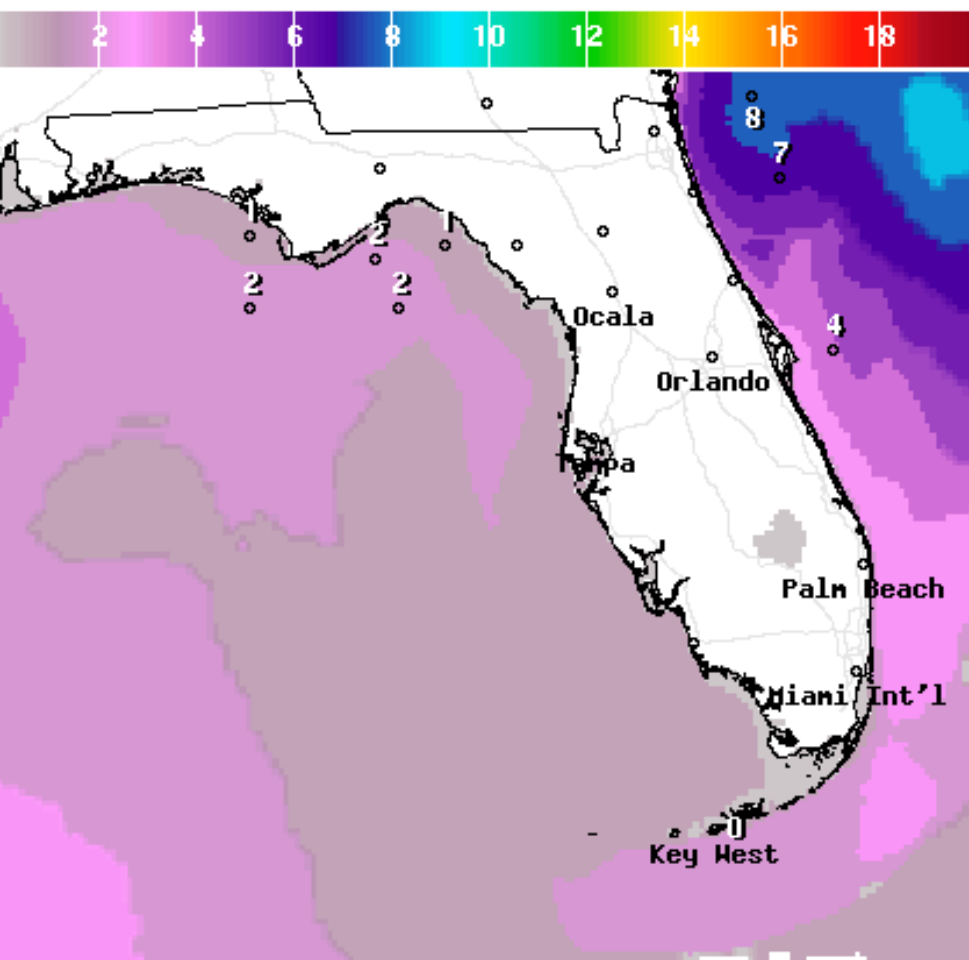
12:00 28-SEP-2017 GMT Copyright © 1998-2017 MSI Corporation <http://www.usi.com>



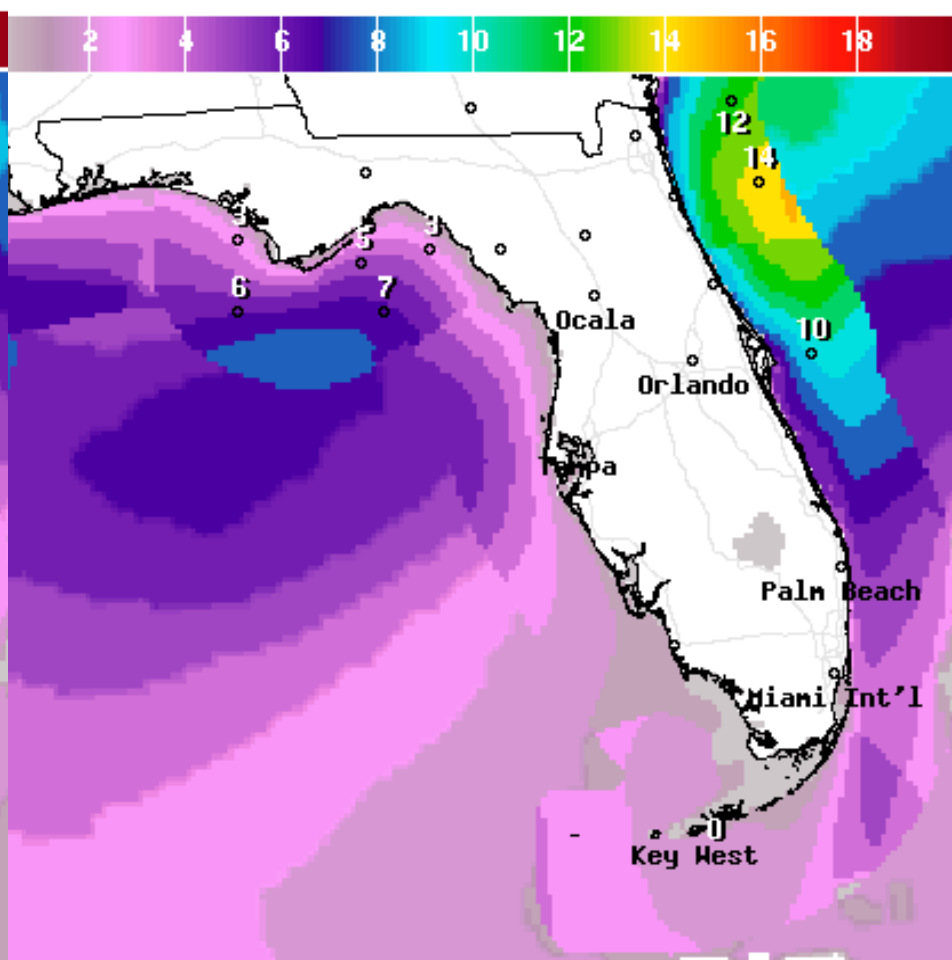
Forecast Rainfall - Next 3 Days



Forecast Wave Height – Saturday & Sunday



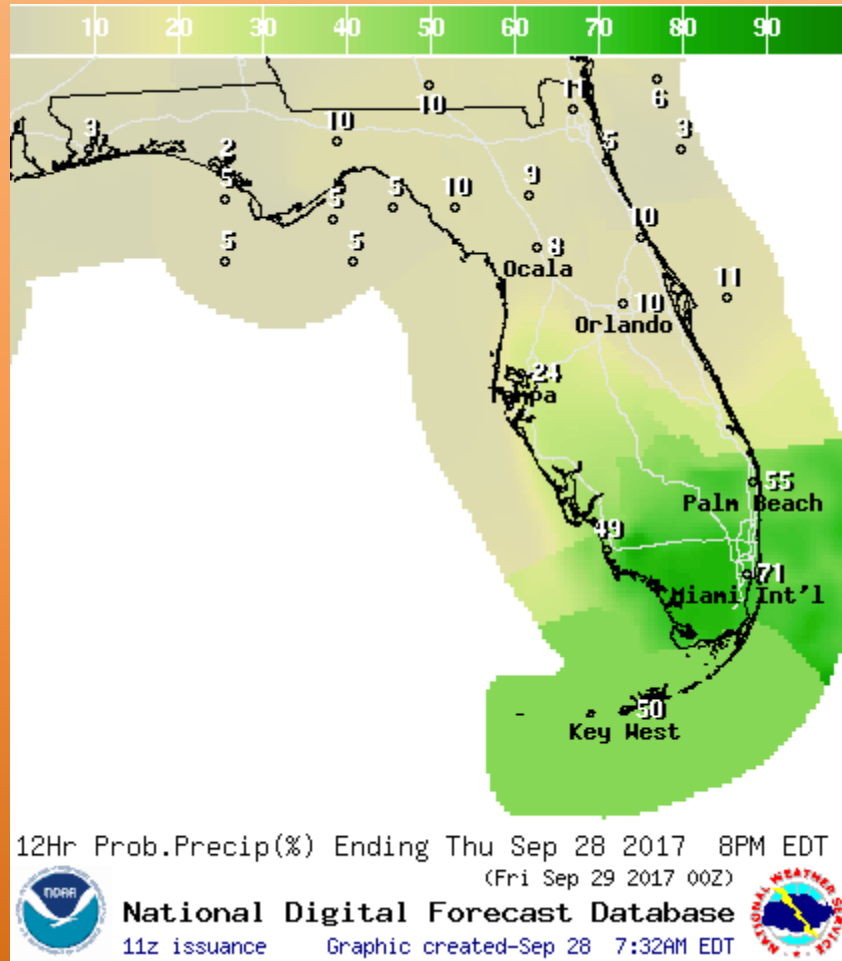
National Digital Forecast Database
11z issuance Graphic created-Sep 28 7:30AM EDT



National Digital Forecast Database
06z issuance Graphic created-Sep 28 2:52AM EDT



Predominant Daytime Weather - Thursday



Sky: Mostly Sunny (North/Central FL)
Partly/Mostly Cloudy (South FL)
Light and variable wind

Rain: 50-70% South FL/Keys, 10-30%
southern Central Florida

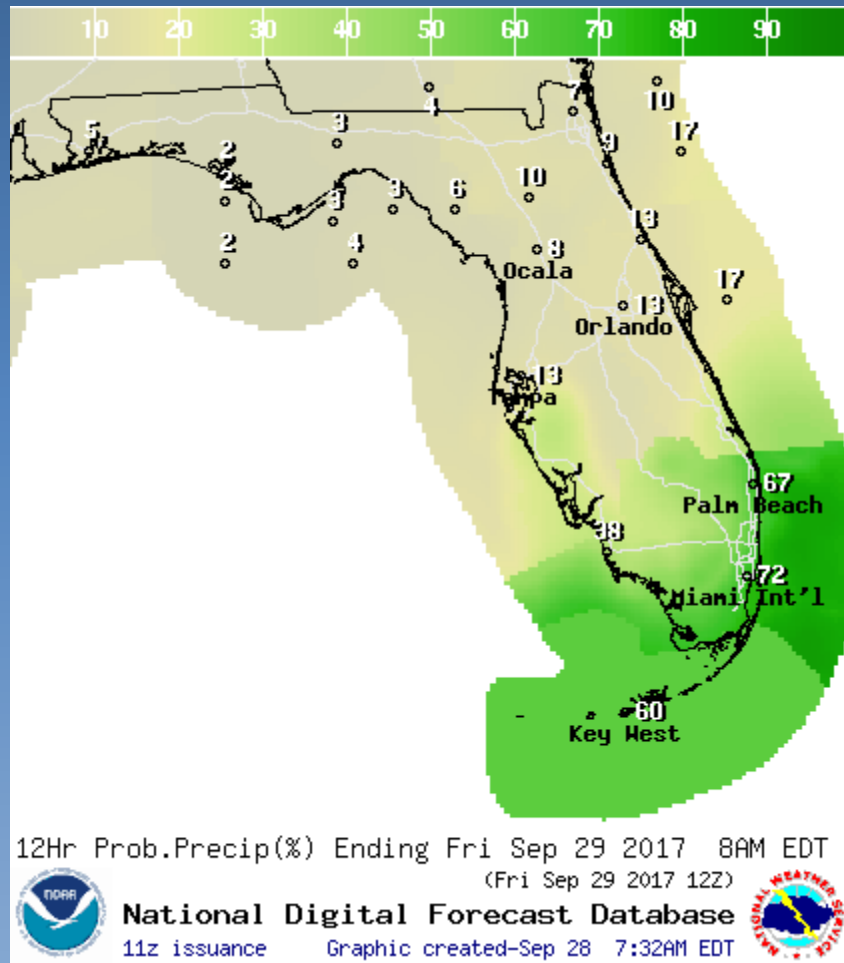
High Temperatures:
Upper 80s-Mid 90s
Heat Index 98-103°

Hazards:

Heat
Lightning

Gusty Winds
Heavy Downpours

Predominant Nighttime Weather



Sky: Mostly Clear (North/Central FL)
Mostly Cloudy (South FL)
Light and variable wind

Rain: 10-30% mainland South FL
40% Keys

Low Temperatures:
Upper 60s-Mid 70s (North)
Mid to upper 70s (Central/South)
Upper 70s/Low 80s (Keys)

Hazards:
Occasional lightning
Heavy Downpours

Summary

- At 5am EDT Thursday, Hurricane Lee was located about 445 miles east of Bermuda and moving north at 9 mph.
- A turn to the north-northeast is expected today along with an increase in forward speed, sending the storm into the colder waters of the North Atlantic.
- After briefly becoming a major hurricane yesterday, maximum sustained winds have decreased to near 110 mph, making Lee a strong category 2 hurricane. Additional weakening is expected and Lee should dissipate on Saturday.
- At 11am EDT Wednesday, Maria strengthened back into a hurricane .
- At 5am EDT Thursday, Maria was downgraded again to a tropical storm with maximum sustained winds near 70 mph.
- Tropical Storm Maria is located about 265 miles east of the North Carolina/Virginia border, or about 750 miles northeast of Jacksonville.
- Maria is moving toward the east-northeast near 8 mph, and the storm is expected to accelerate eastward through tonight with an even faster movement expected on Friday and Saturday before becoming post-tropical on Sunday.
- Elsewhere, a large area of showers and storms in the northwestern Caribbean Sea and across Cuba is associated with a broad surface trough interacting with an upper-level low.
- This disturbance is expected to move northward over the next few days, and a weak area of low pressure is likely to form from this weather system.
- Environmental conditions appear conducive for development before upper-level winds become less favorable early next week and there is a 40% (medium) chance of tropical cyclone formation near the East Coast of Florida this weekend.
- Computer models have not been run on this system, both global models suggest development of a low off the East-Central or Northeast Florida coast and then move west into the Peninsula while dissipating due to high wind shear.
- Significant development into a strong tropical system is not expected.

Florida Outlook

- Ocean swells from Maria are beginning to diminish along the Florida Coast and Lee does not pose a threat to Florida.
- Regardless of development, the Caribbean disturbance is likely to produce locally heavy rainfall over portions of southern Florida and the Florida Keys during the next several days.
- Heavy rainfall will also be possible along the entire Florida East Coast beginning Saturday and continuing through at least Tuesday.
- In addition, some breezy winds and gusts to 30mph are possible Friday-Sunday, especially near the immediate East Coast.
- These strong onshore winds will have the potential to produce elevated tides (especially along St. Johns River) and high waves that could result in additional coastal erosion.

Another briefing packet will be issued Thursday afternoon. For more information, visit the NHC website at www.hurricanes.gov.



TROPICAL UPDATE

Created by:

Amy Godsey, Chief State Meteorologist

amy.godsey@em.myflorida.com

State Meteorological Support Unit

Florida Division of Emergency Management

Users wishing to subscribe (approval pending) to this distribution list, register at
https://public.govdelivery.com/accounts/FLDEM/subscriber/new?topic_id=SERT_Met_Tropics.

Other reports available for subscription are available at

<https://public.govdelivery.com/accounts/FLDEM/subscriber/new?preferences=true>