



TROPICAL UPDATE

10 AM EDT

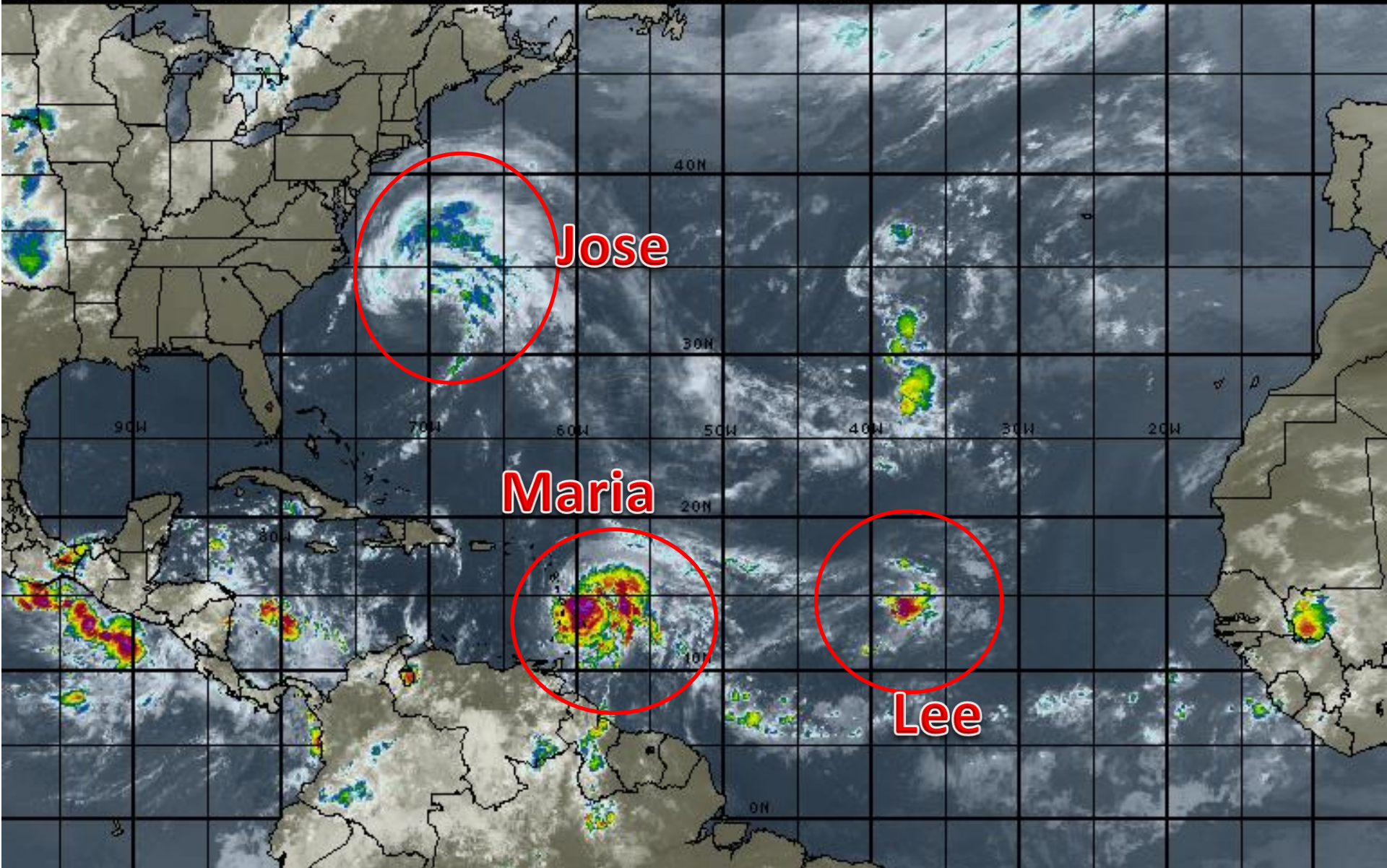
Monday, September 18, 2017

**Hurricane Jose, Tropical Depression Lee &
Hurricane Maria**

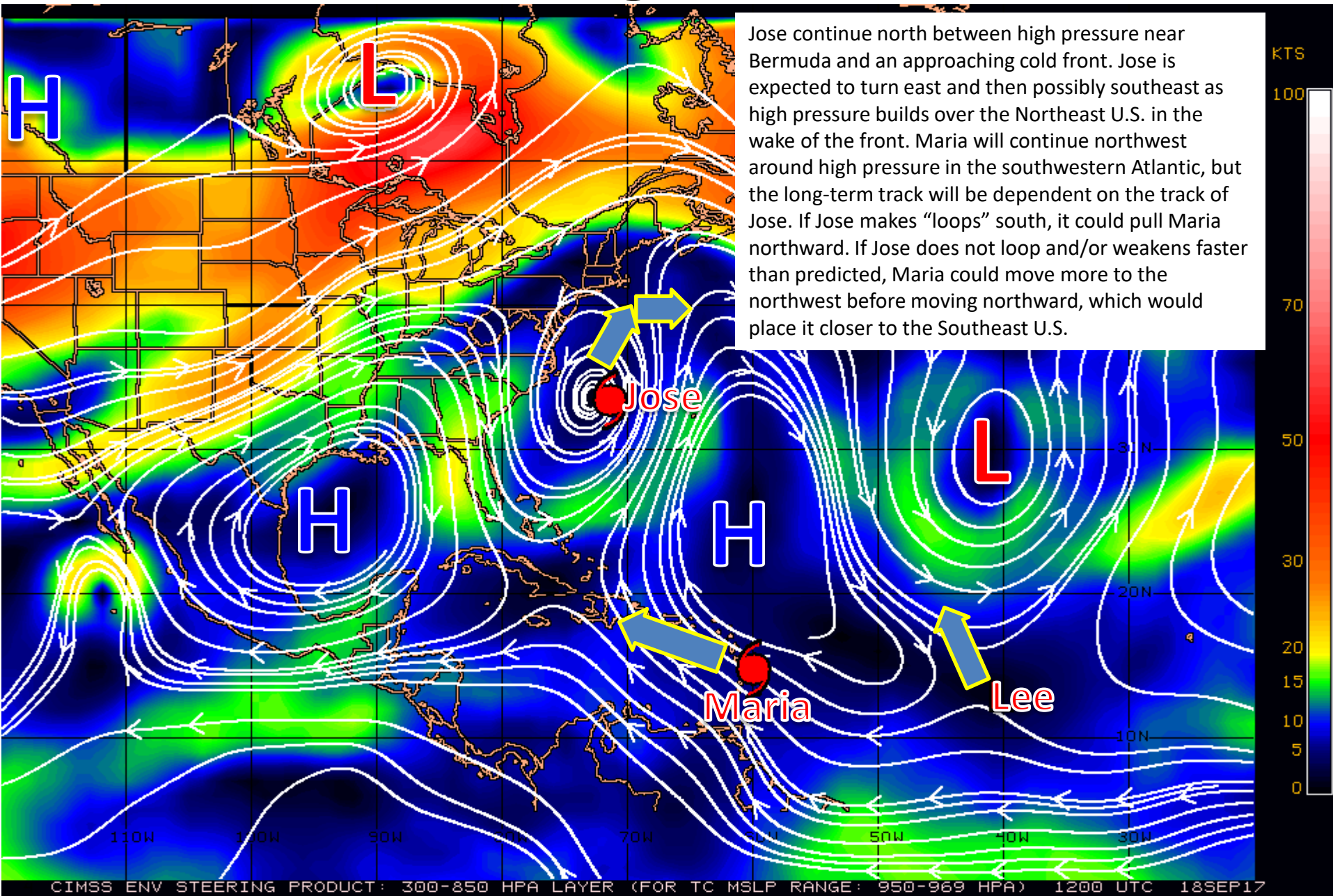
This update is intended for government and emergency response officials, and is provided for informational and situational awareness purposes only. Forecast conditions are subject to change based on a variety of environmental factors. For additional information, or for any life safety concerns with an active weather event please contact your County Emergency Management or Public Safety Office, local National Weather Service forecast office or visit the National Hurricane Center website at www.nhc.noaa.gov.

Atlantic Basin Satellite Image

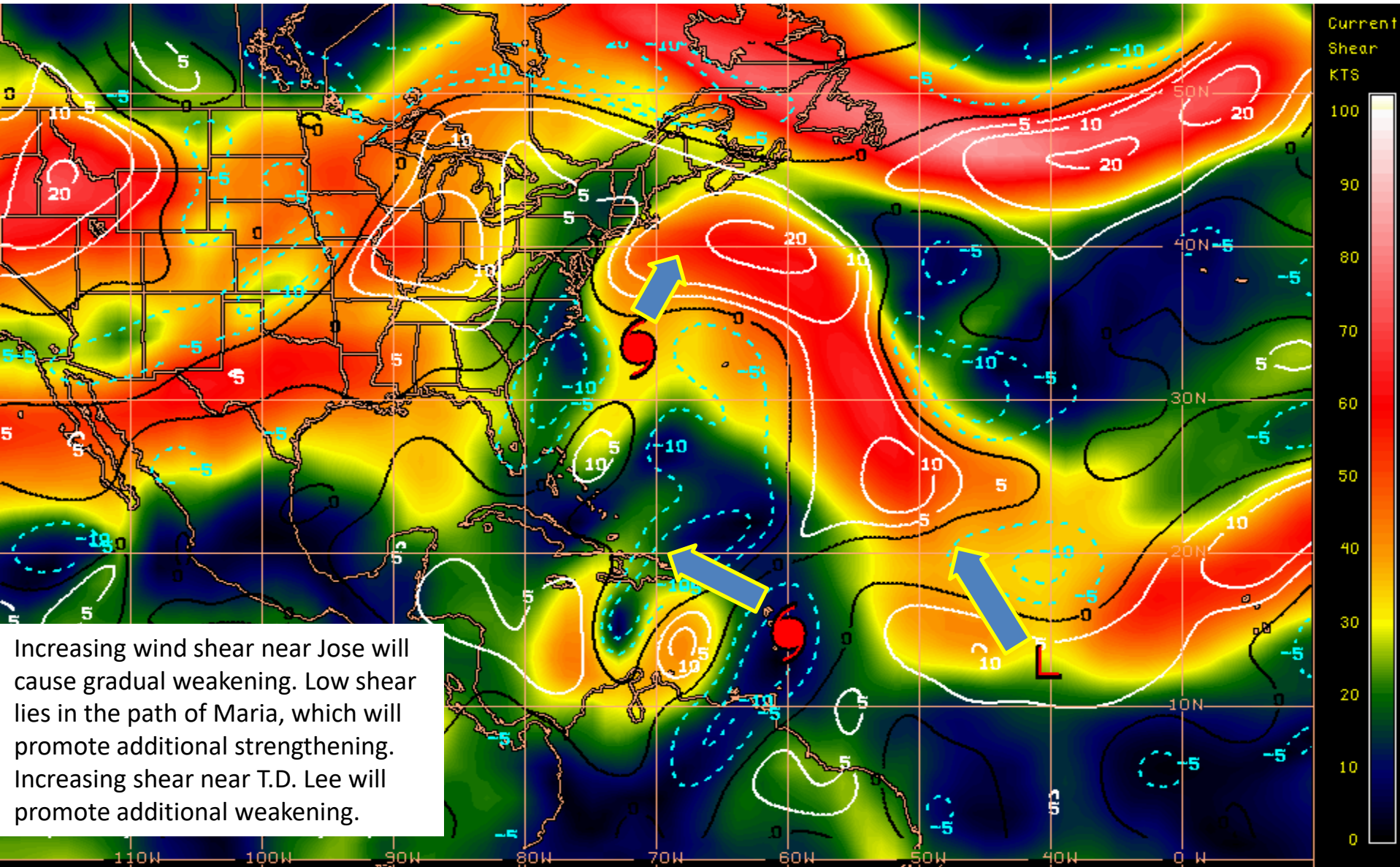
09:00 18-SEP-2017 GMT Copyright © 1998-2016 MSI Corporation <http://www.wsi.com>



Steering Currents

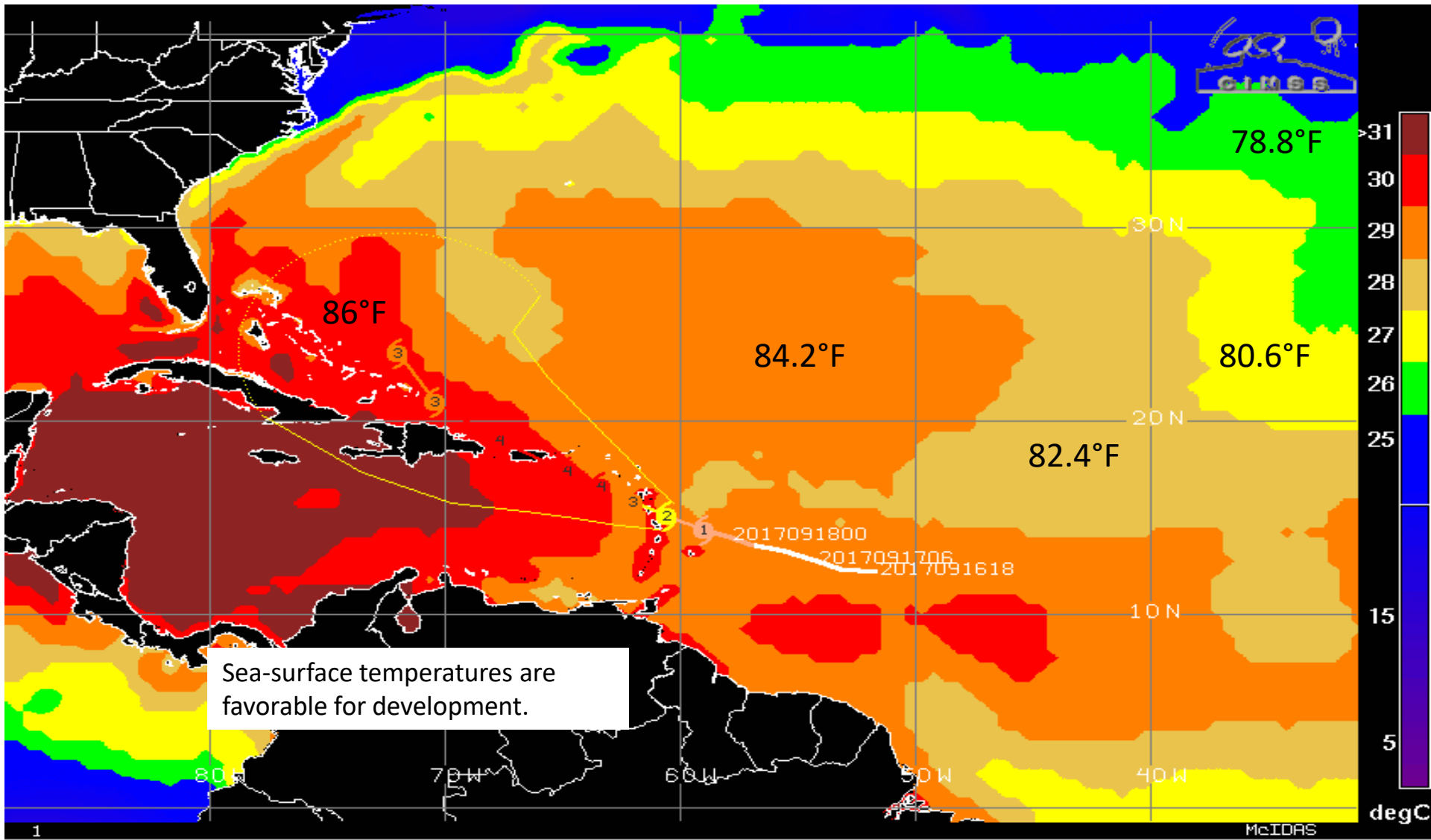


Current Wind Shear (Shaded) and Shear Tendency (Lines)



Shear Tendency (KTS) Over Past 24 Hours: Increasing ——— Decreasing - - - -

Sea Surface Temperatures



- Low/Wave
- Tropical Depr
- Tropical Strm
- Category 1
- Category 2
- Category 3
- Category 4
- Category 5
- I** – Invest Area
- L** – Tropical Depression
- 6** – Tropical Storm
- 6** – Hurricane/Typhoon (w/ category)

Hurricane Jose

5 AM EDT Mon Sep 18 2017

Position 33.0 N 71.4 W

Maximum Winds 85 mph

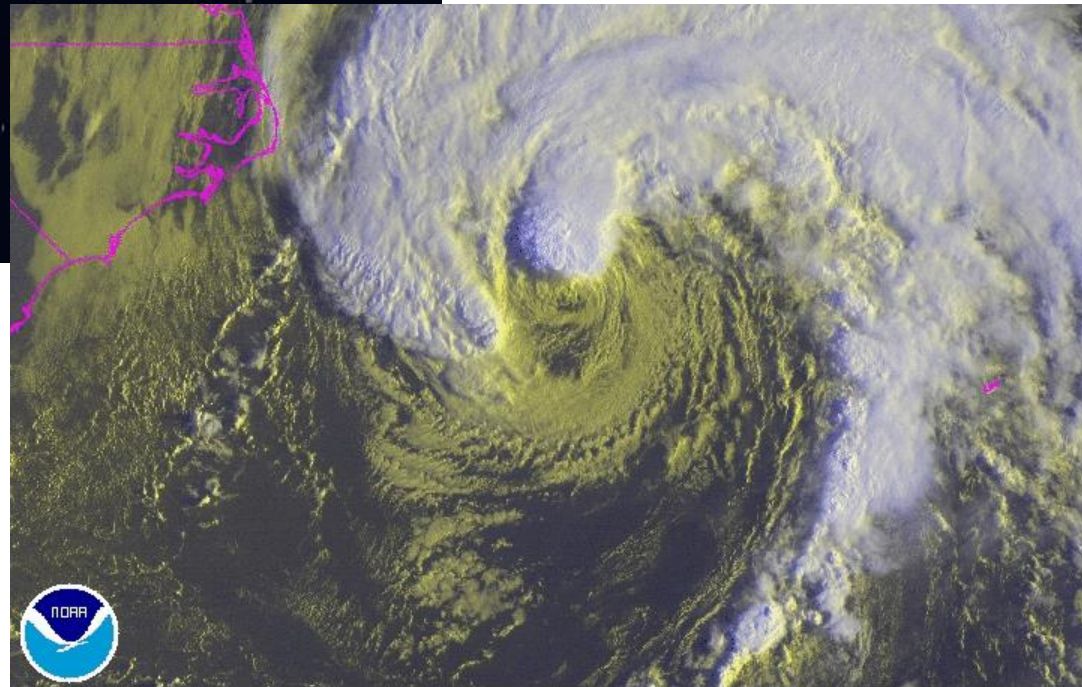
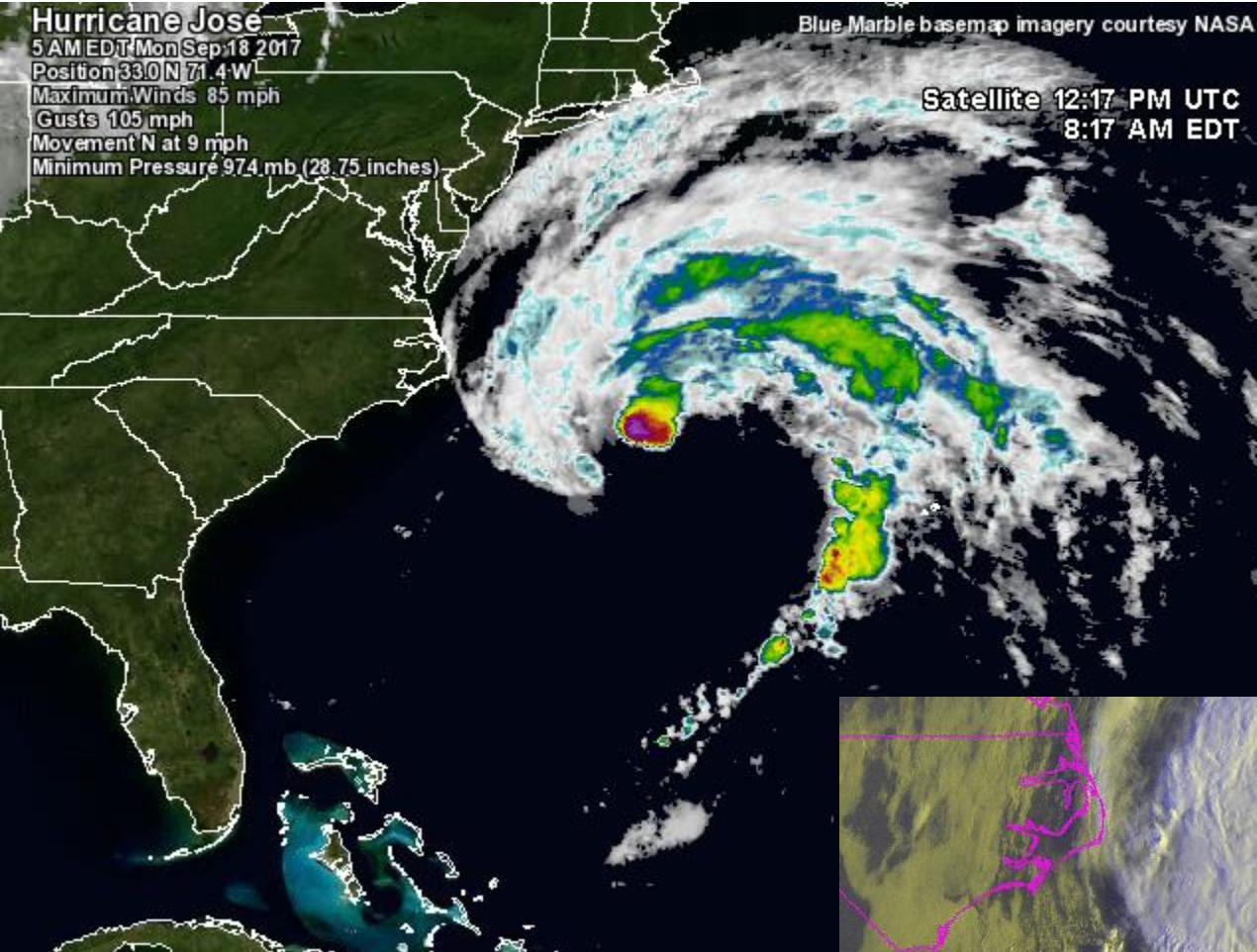
Gusts 105 mph

Movement N at 9 mph

Minimum Pressure 974 mb (28.75 inches)

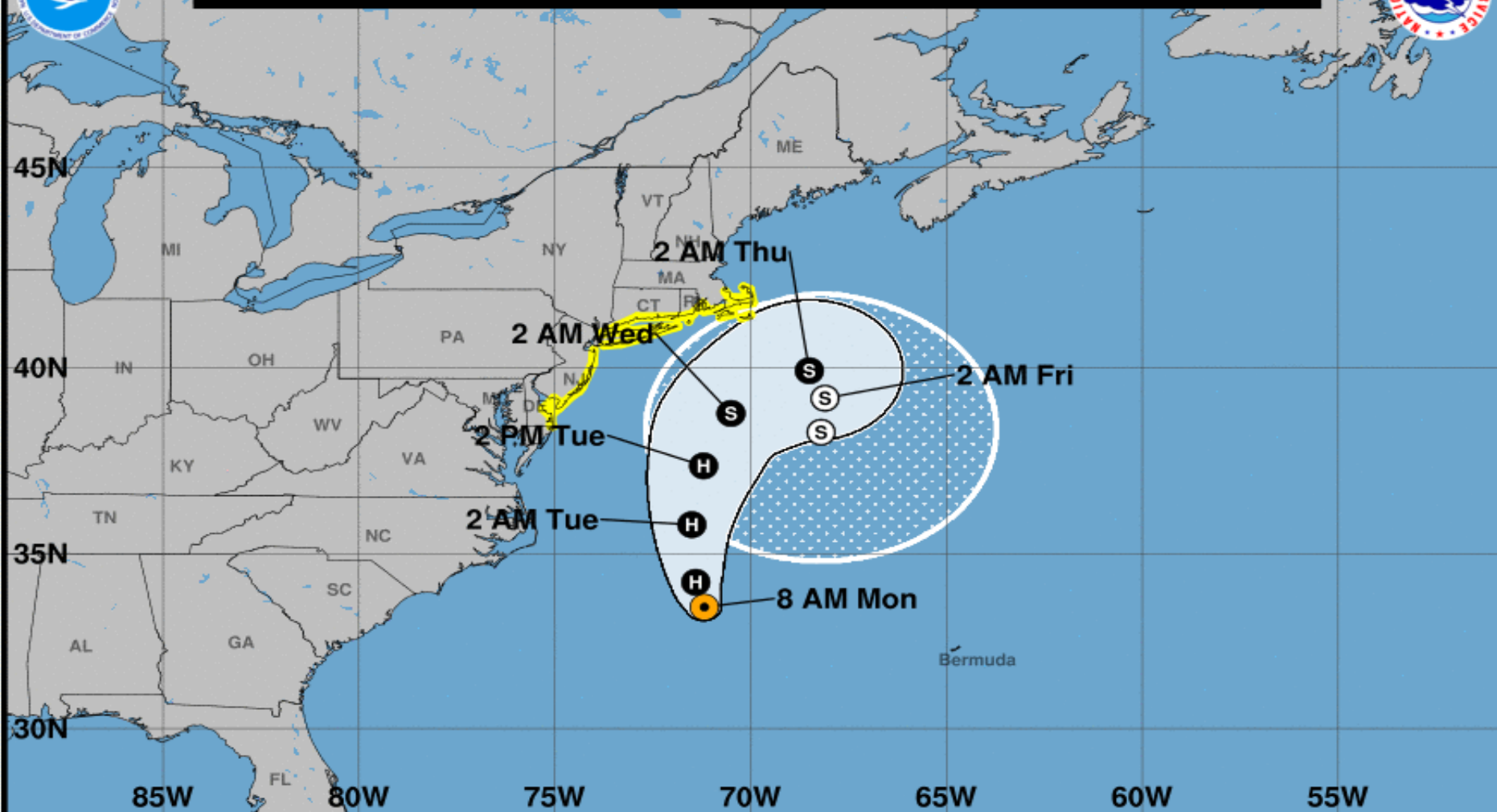
Blue Marble basemap imagery courtesy NASA

Satellite 12:17 PM UTC
8:17 AM EDT





Note: The cone contains the probable path of the storm center but does not show the size of the storm. Hazardous conditions can occur outside of the cone.



Hurricane Jose

Monday September 18, 2017

8 AM EDT Intermediate Advisory 52A

NWS National Hurricane Center

Current information:



Center location 33.5 N 71.2 W

Maximum sustained wind 85 mph

Movement N at 9 mph

Forecast positions:

● Tropical Cyclone ○ Post/Potential TC

Sustained winds: D < 39 mph

S 39-73 mph H 74-110 mph M > 110 mph

Potential track area:



Day 1-3



Day 4-5

Watches:



Hurricane



Trop Storm

Warnings:

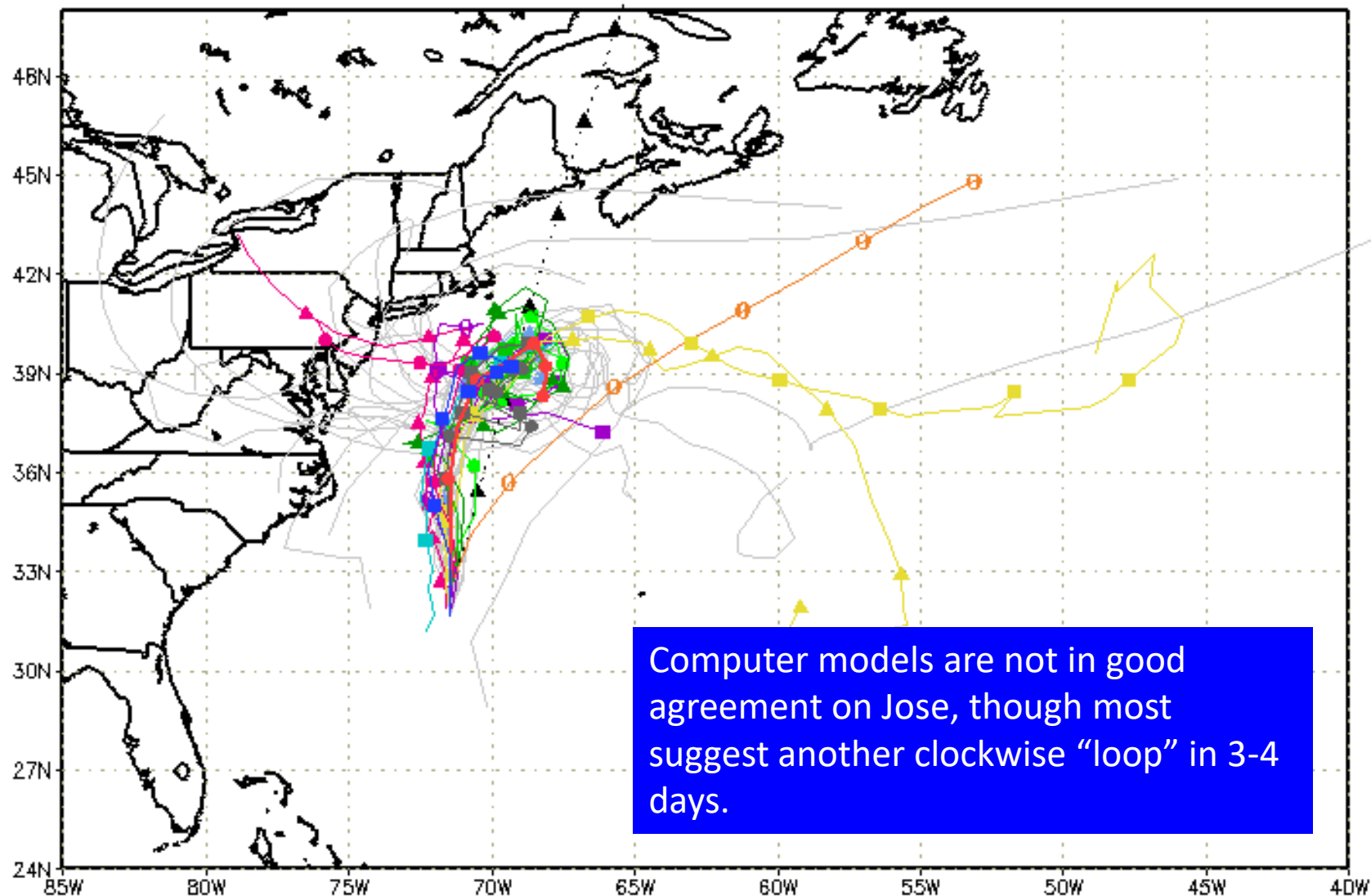


Hurricane



Trop Storm

--▲-- XTRP 18/0600Z	---▲--- TABD 18/0600Z	---▲--- HMON 18/0000Z	---▲--- AVNO 18/0000Z	---▲--- CMC 18/0000Z
---■--- TVCN 18/0600Z	---■--- TABM 18/0600Z	---■--- GFDN Not Avail	---■--- AEMN 18/0000Z	---■--- CEMN 18/0000Z
---●--- TVCX 18/0600Z	---●--- TABS 18/0600Z	---●--- HWRF 18/0600Z	---●--- APxx 18/0000Z	---●--- UKM 18/0000Z
---●--- NHC 18/0900Z	---●--- NVGM Not Avail	---●--- COTC Not Avail	---●--- NAM 18/0000Z	---●--- CLP5 18/0600Z



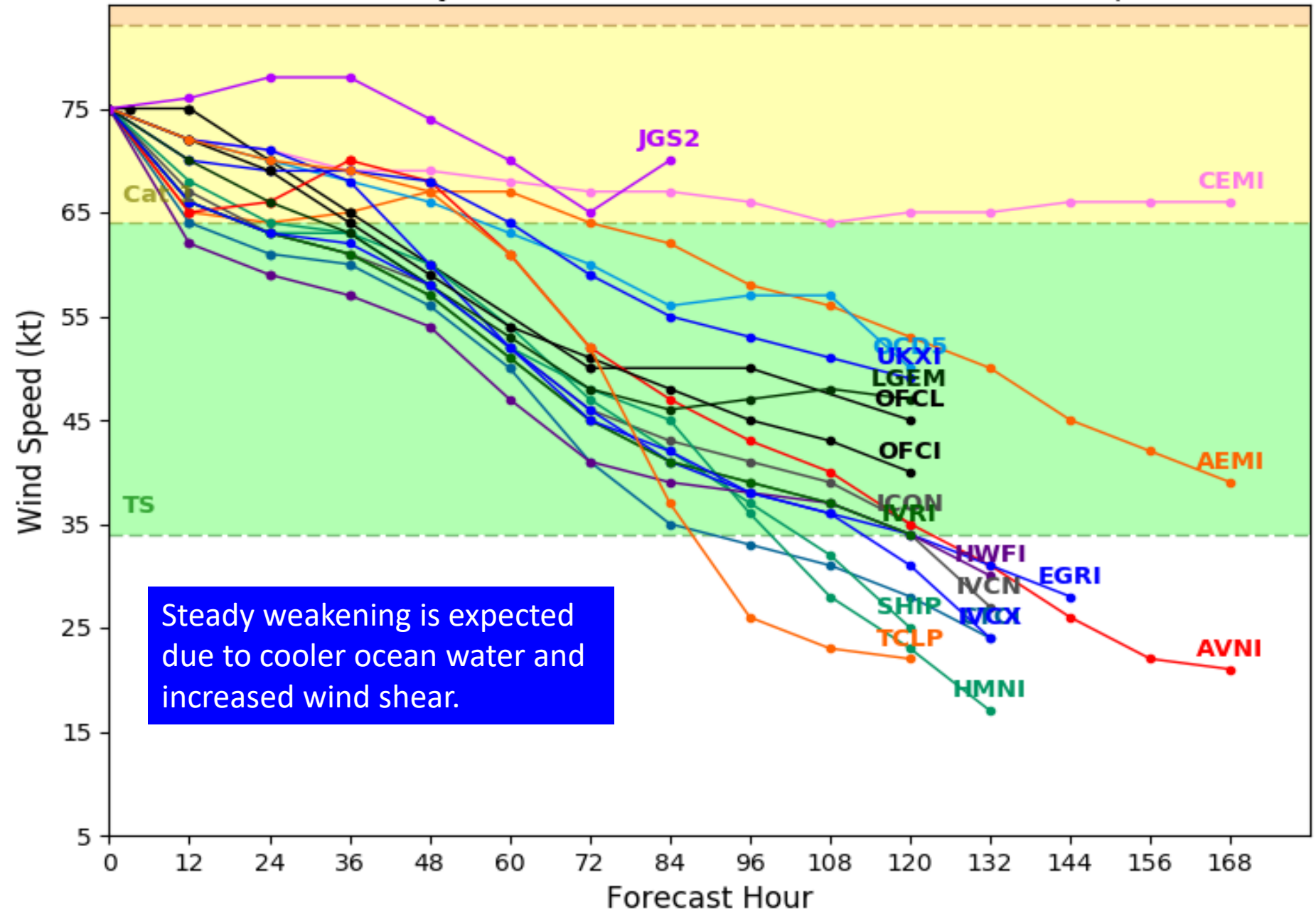
storm_12

weather@sfwmd.gov
18-Sep 08:21EDT

NHC Advisories and County Emergency Management Statements supersede this product. This graphic should complement, not replace, NHC discussions. If anything on this graphic causes confusion, ignore the entire product. For full info, see <http://my.sfwmd.gov/sfwmd/common/images/weather/plots.html>



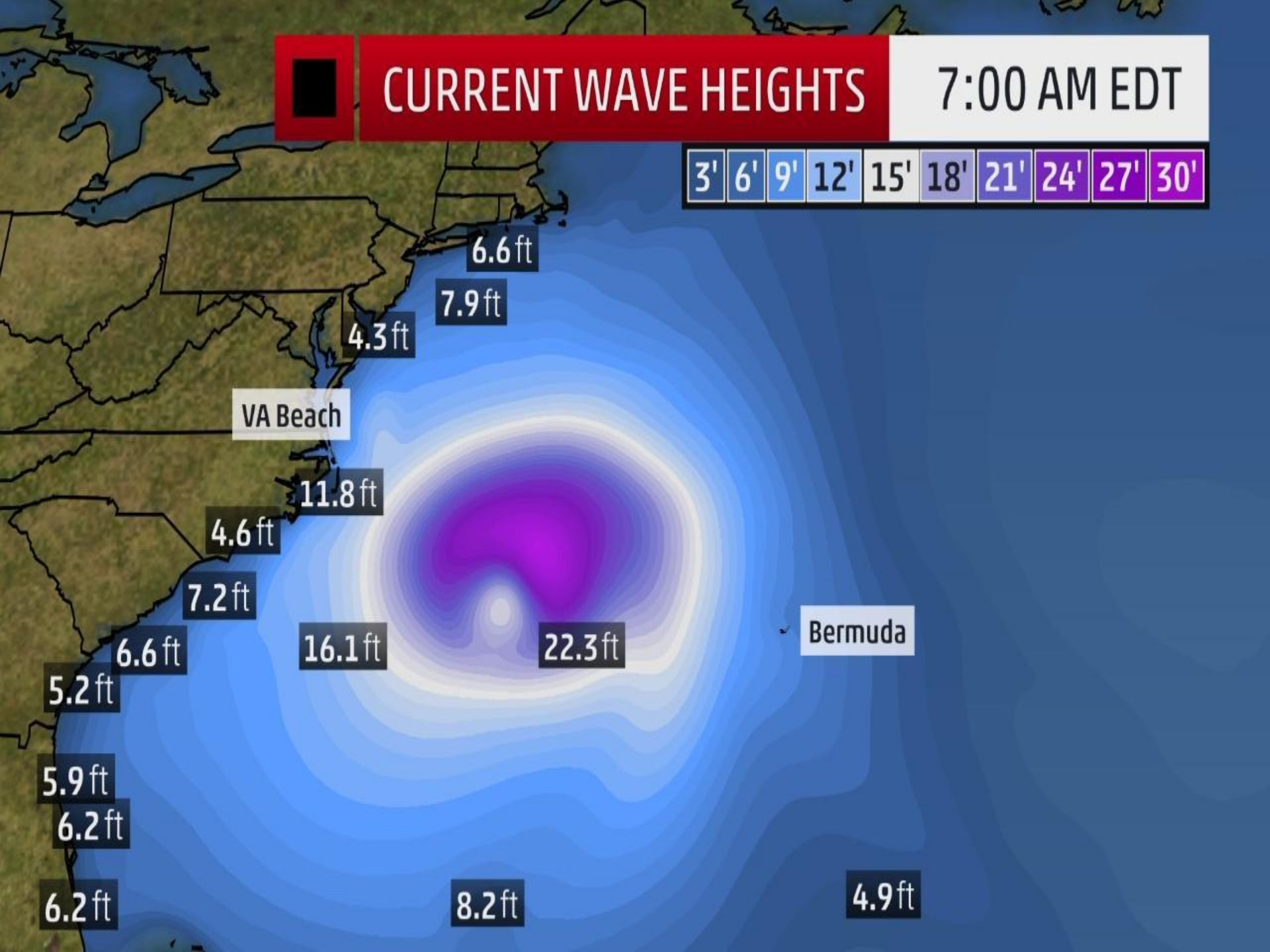
Levi Cowan - tropicaltidbits.com





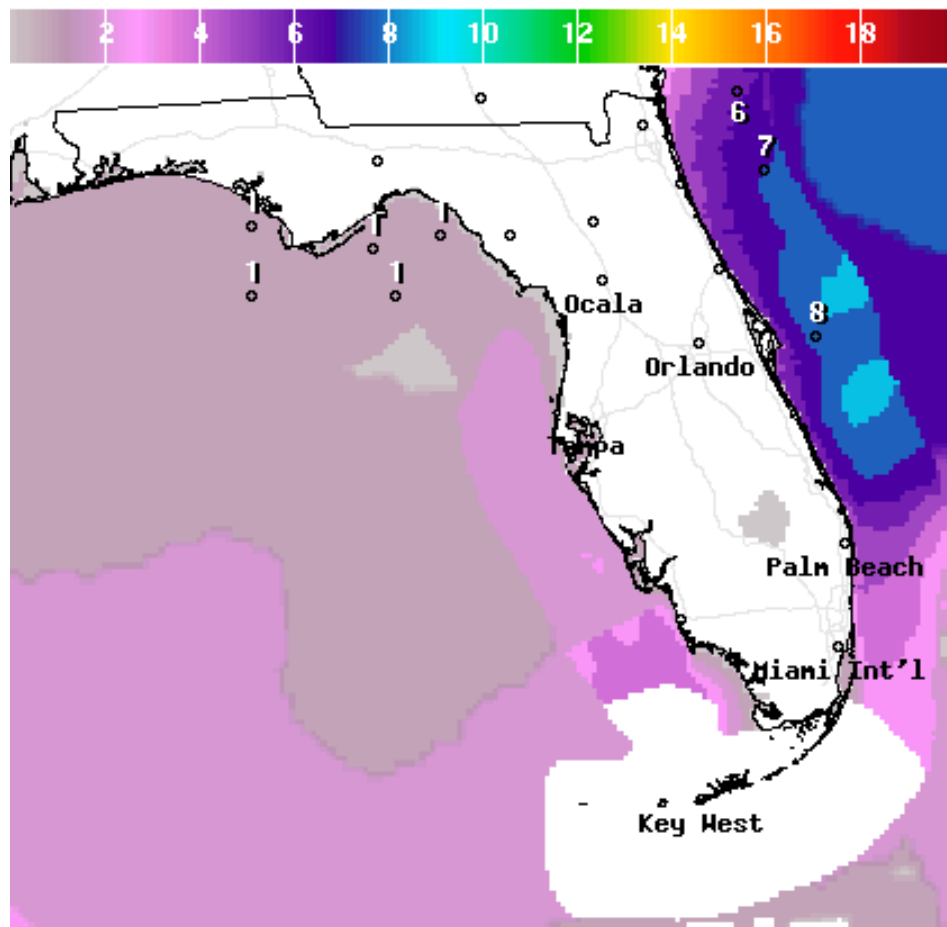
CURRENT WAVE HEIGHTS

7:00 AM EDT



Forecast Wave Heights – Monday & Tuesday

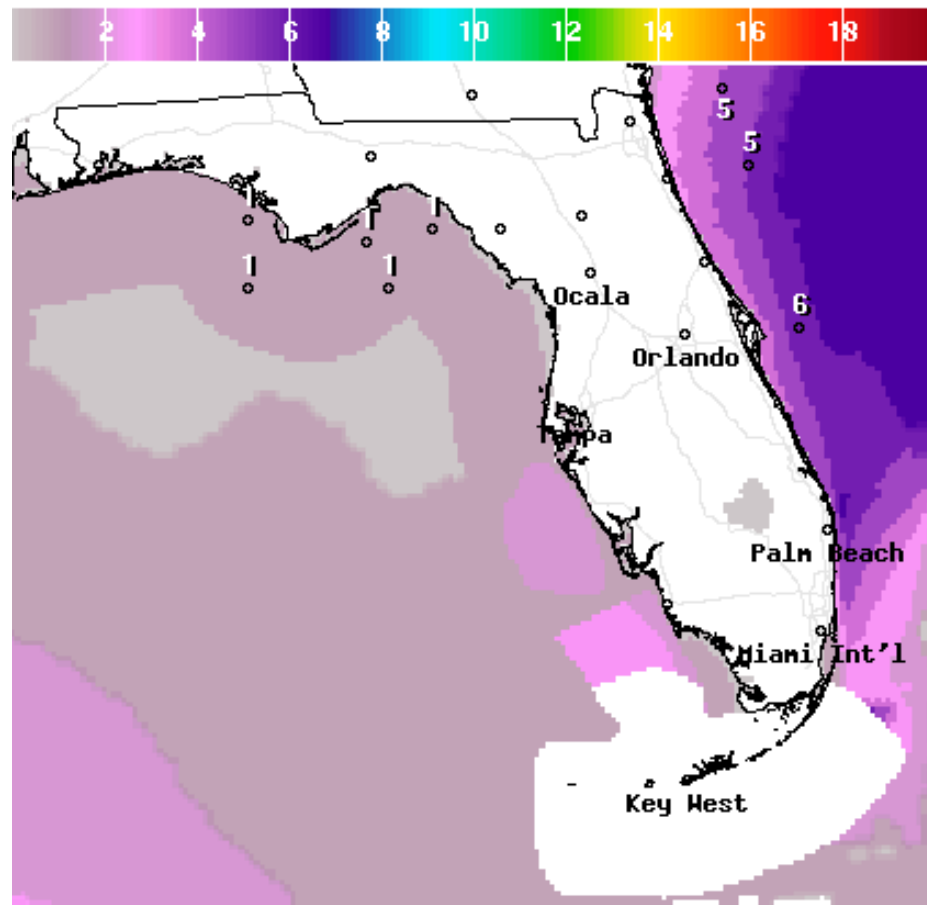
Jose will continue to send high waves to the East Coast for the next few days.



National Digital Forecast Database

11z issuance

Graphic created-Sep 18 7:46AM EDT



National Digital Forecast Database

11z issuance

Graphic created-Sep 18 7:31AM EDT



Hurricane Maria

5 AM EDT Mon Sep 18 2017

Position 14.6 N 59.5 W

Maximum Winds 90 mph

Gusts 115 mph

Movement WNW at 12 mph

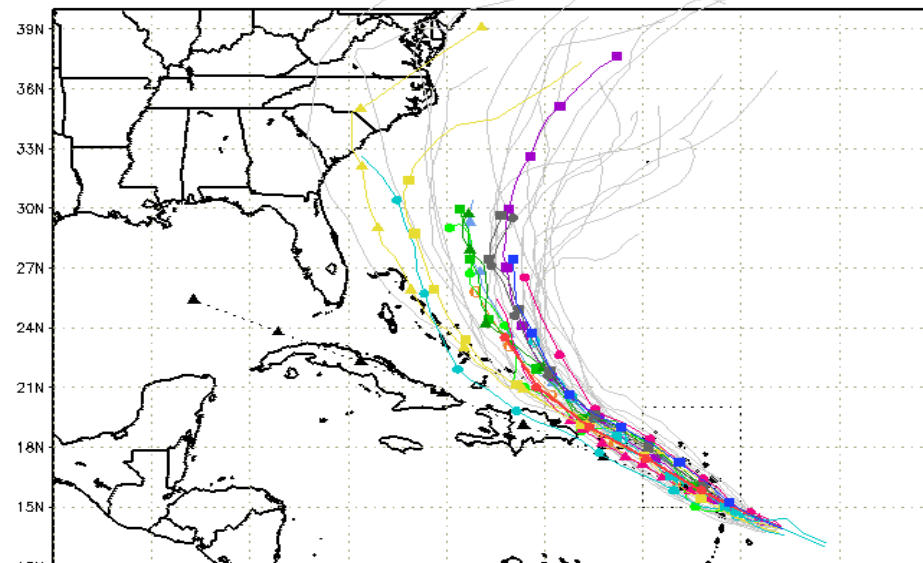
Minimum Pressure 977 mb (28.84 inches)

Blue Marble basemap imagery courtesy NASA

Satellite 12:19 PM UTC
8:19 AM EDT



XTRP 18/0600Z TABD 18/0600Z HMON 18/0000Z AVNO 18/0000Z GMC 18/0000Z
 TVCN 18/0600Z TABM 18/0600Z GFON Not Avail AEMN 18/0000Z GEMN 18/0000Z
 TVCX 18/0600Z TABS 18/0600Z HWRF 18/0000Z APxx 18/0000Z UKM 18/0000Z
 NHC 18/0900Z NVGM 17/1200Z COTC 17/1200Z NAM Not Avail CLP5 18/0600Z

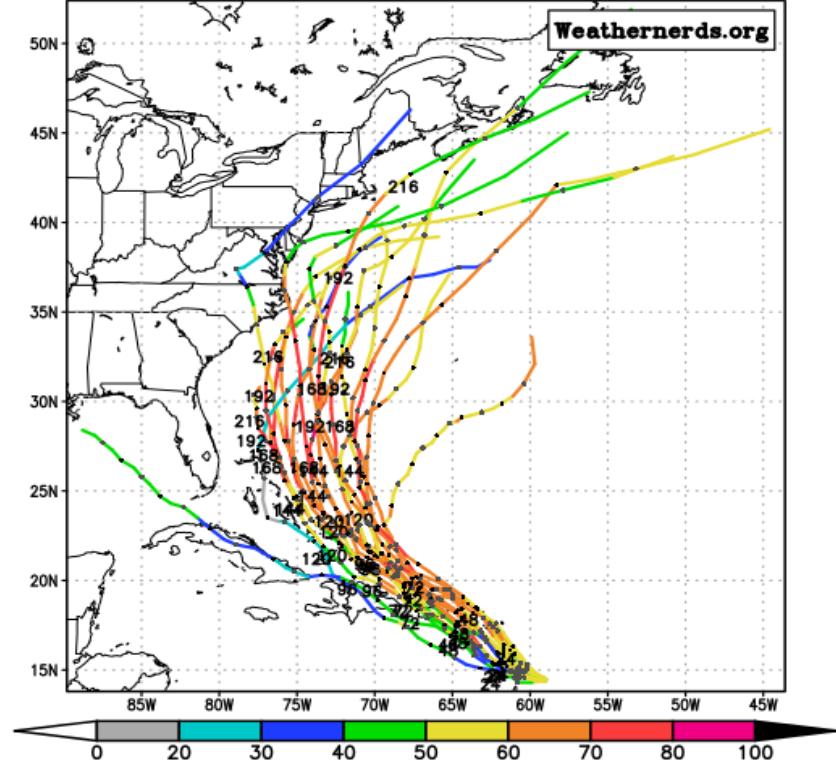
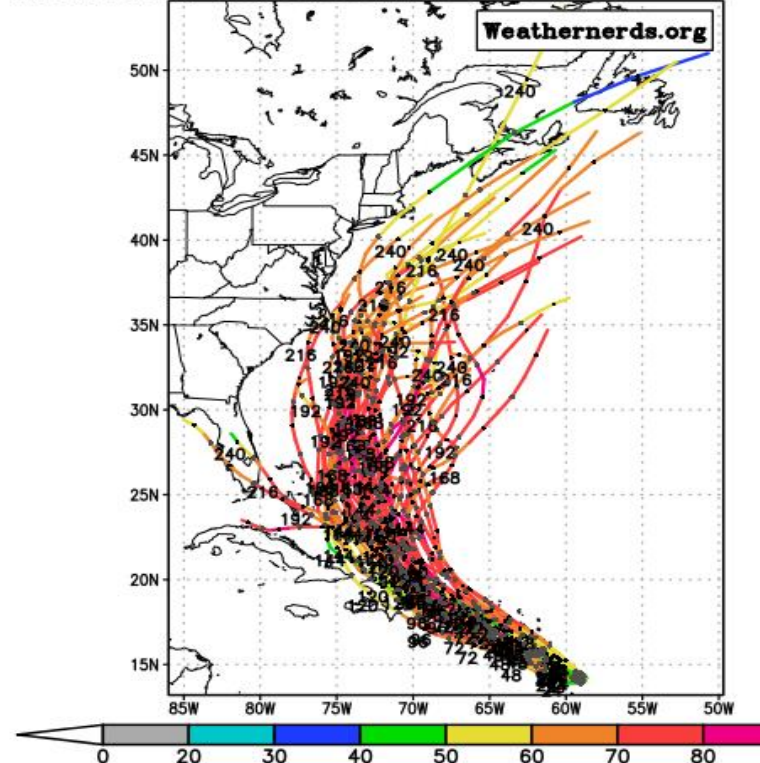


Computer models are not in agreement on track beyond 4 days and is highly dependent on the track and intensity of Jose. Additional shifts and disagreement in the models is expected for the next few days.

ECMWF Ensemble, init: 2017091800, AL15 Maria

cc GFS Ensemble, init: 2017091806, AL15 Maria

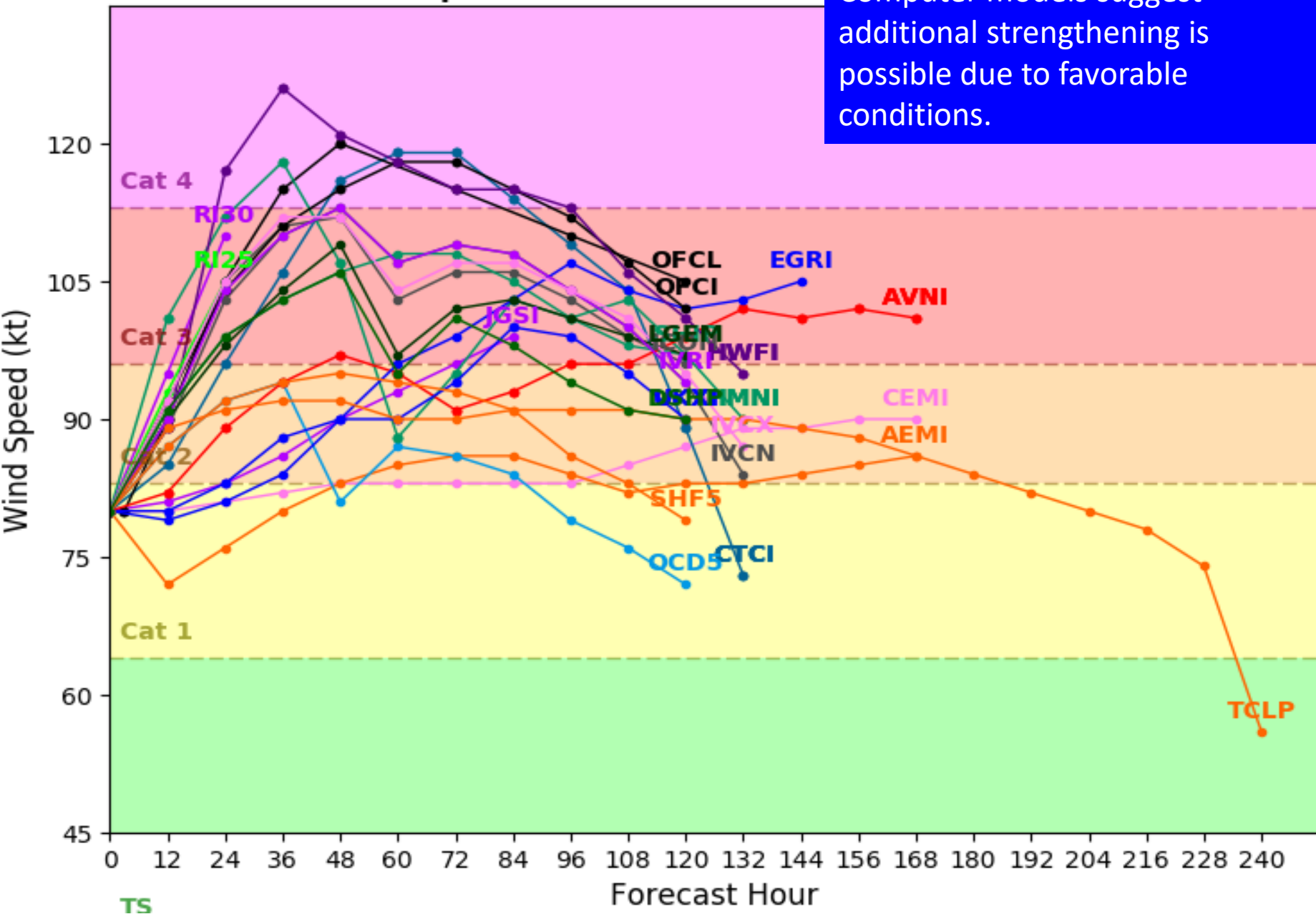
color = max wind (kt)



Hurricane MARIA Model Intensity Guidance

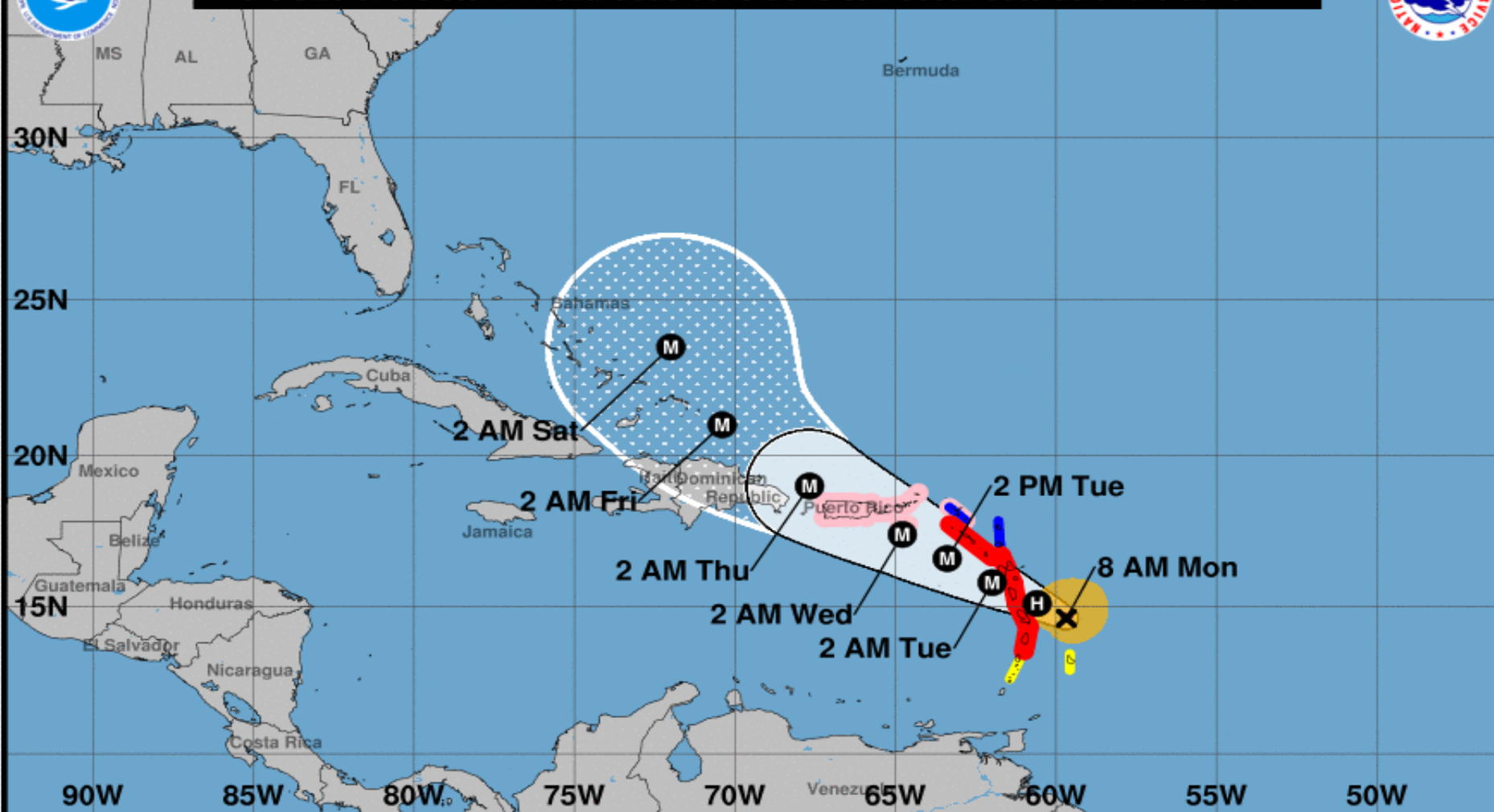
Initialized at 06z Sep 18 2017

Computer models suggest additional strengthening is possible due to favorable conditions.





Note: The cone contains the probable path of the storm center but does not show the size of the storm. Hazardous conditions can occur outside of the cone.



Hurricane Maria

Monday September 18, 2017

8 AM AST Intermediate Advisory 8A

NWS National Hurricane Center

Current information: x

Center location 14.6 N 59.7 W

Maximum sustained wind 110 mph

Movement WNW at 12 mph

Forecast positions:

● Tropical Cyclone ○ Post/Potential TC

Sustained winds: D < 39 mph

S 39-73 mph H 74-110 mph M > 110 mph

Potential track area:

△ Day 1-3 ▨ Day 4-5

Watches:

■ Hurricane ■ Trop Stm

Warnings:

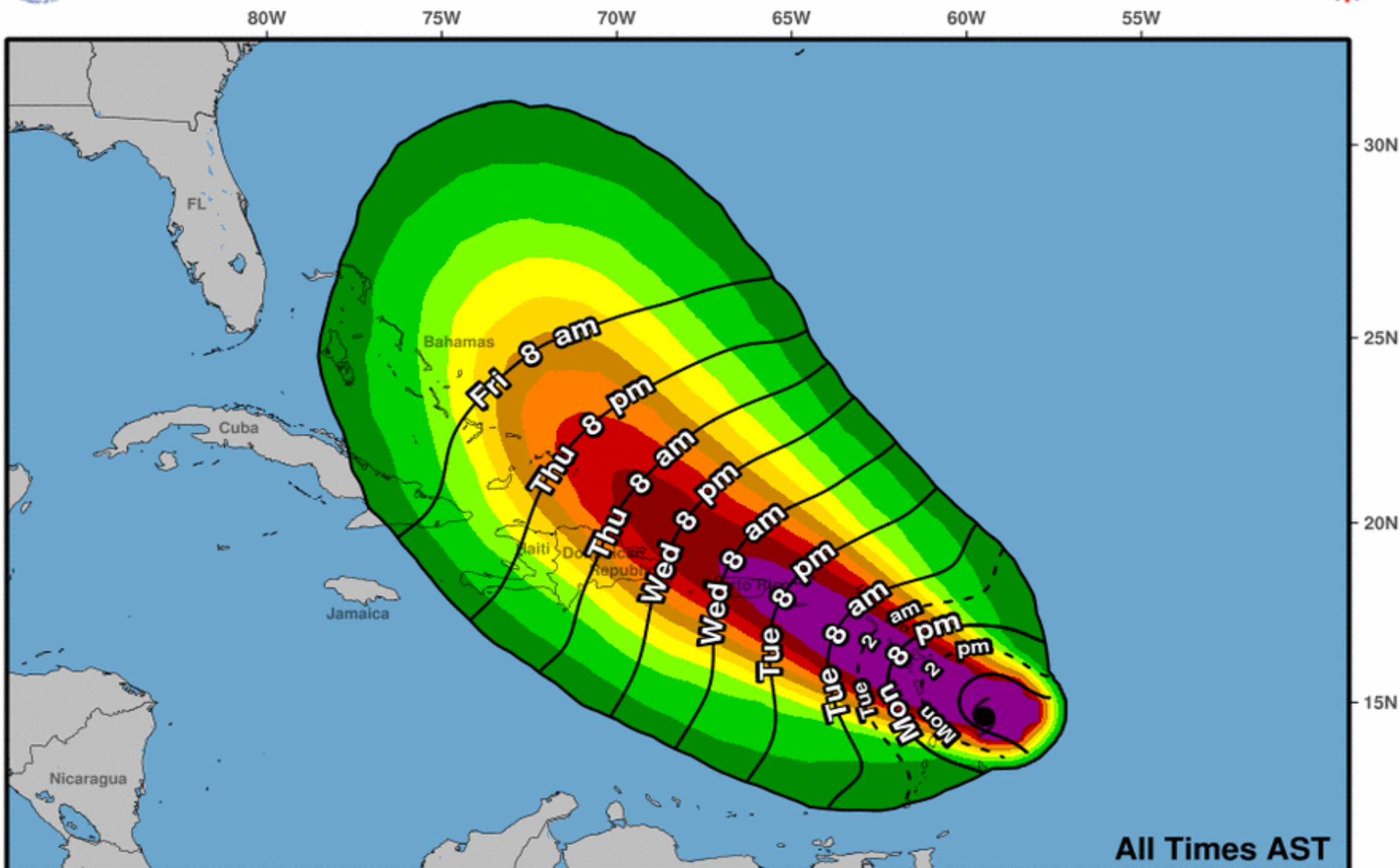
■ Hurricane ■ Trop Stm

Current wind extent:

■ Hurricane ■ Trop Stm

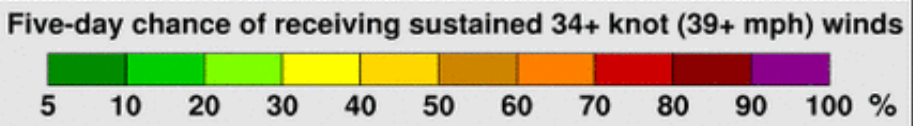


Most Likely Arrival Time of Tropical-Storm-Force Winds



Hurricane Maria
Mon. Sep. 18, 2017 5 am AST
Advisory 8

Storm Location &
Wind Speed (knots)
○ <34 ◐ 34-63 ● ≥64



Tropical Depression Lee

5 AM EDT Mon Sep 18 2017

Position 14.1 N 39.8 W

Maximum Winds 35 mph

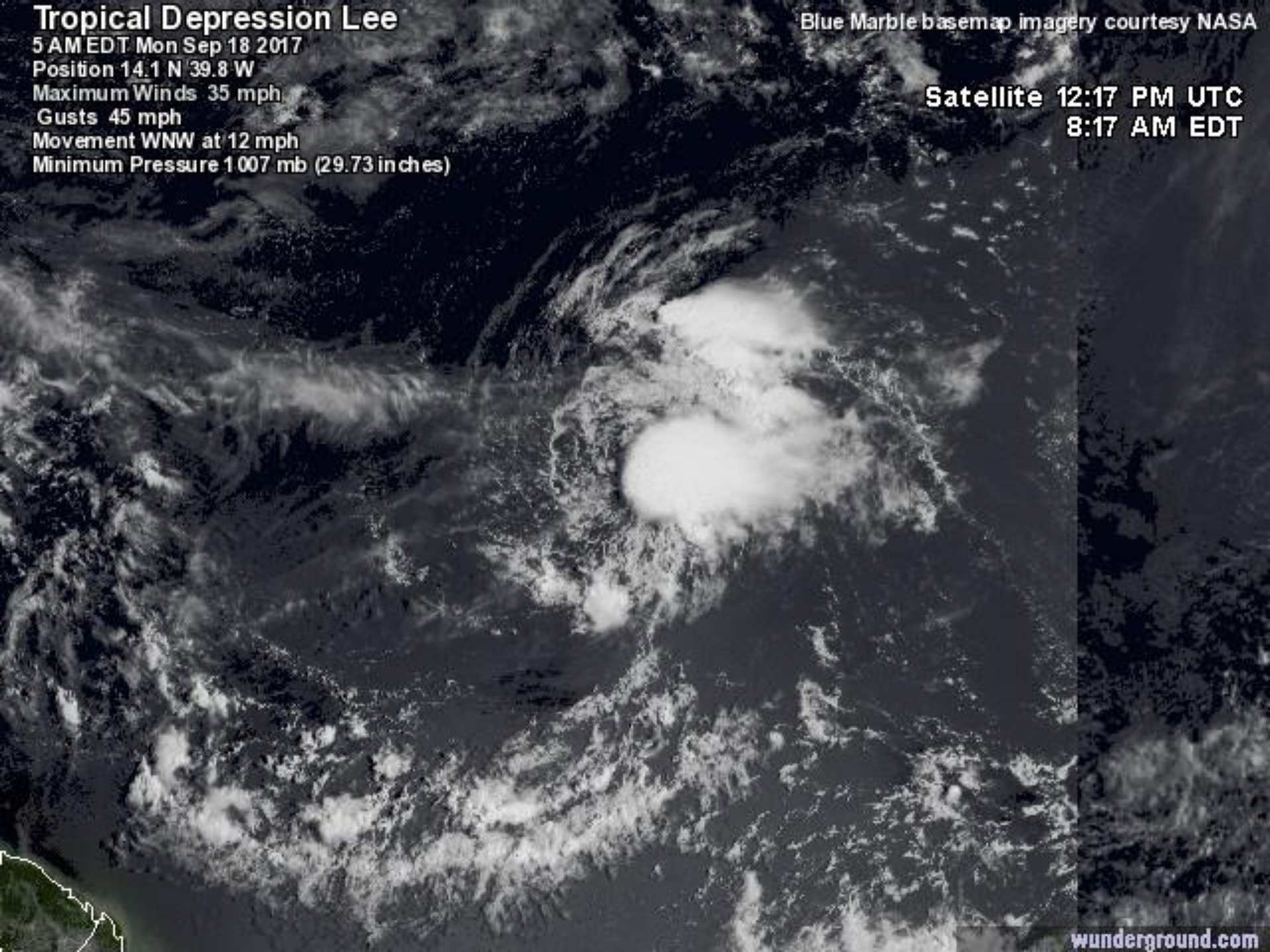
Gusts 45 mph

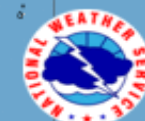
Movement WNW at 12 mph

Minimum Pressure 1 007 mb (29.73 inches)

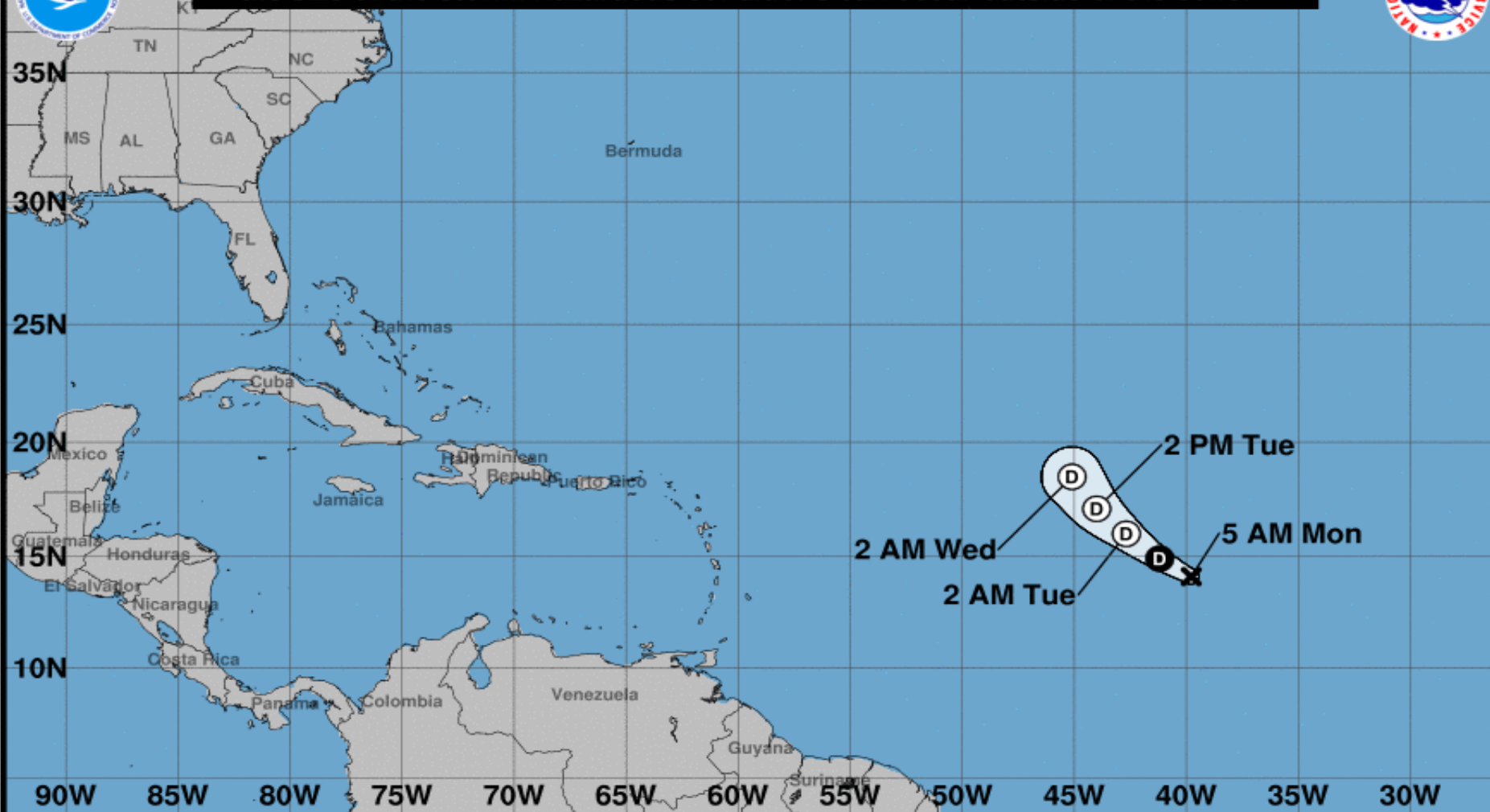
Blue Marble basemap imagery courtesy NASA

Satellite 12:17 PM UTC
8:17 AM EDT





Note: The cone contains the probable path of the storm center but does not show the size of the storm. Hazardous conditions can occur outside of the cone.



Tropical Depression Lee

Monday September 18, 2017

5 AM AST Advisory 14

NWS National Hurricane Center

Current information: x

Center location 14.1 N 39.8 W

Maximum sustained wind 35 mph

Movement WNW at 13 mph

Forecast positions:

● Tropical Cyclone ○ Post/Potential TC

Sustained winds: D < 39 mph

S 39-73 mph H 74-110 mph M > 110 mph

Potential track area:

Day 1-3 Day 4-5

Watches:

Hurricane Trop Stm

Warnings:

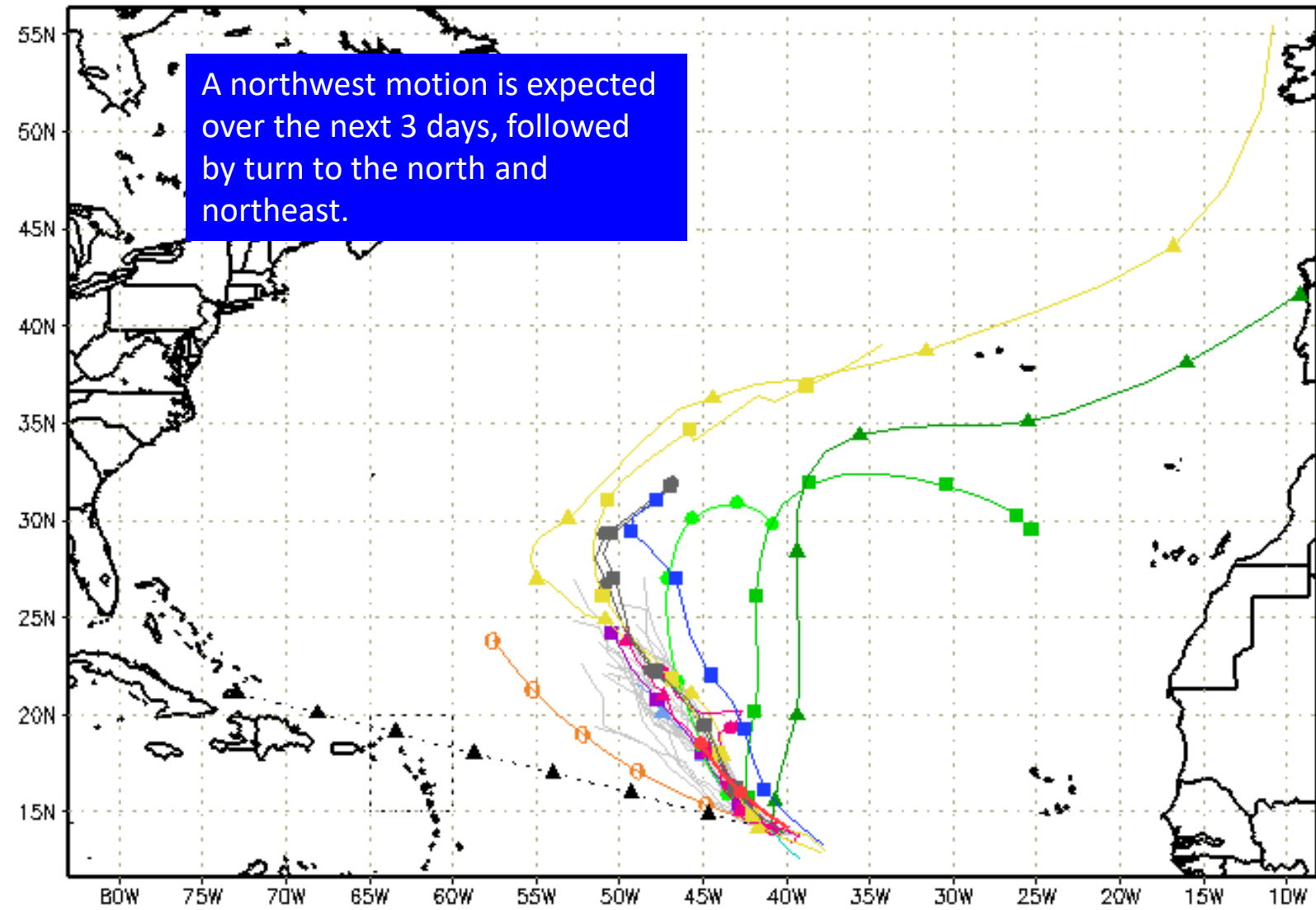
Hurricane Trop Stm

Current wind extent:

Hurricane Trop Stm

---▲--- XTRP 18/1200Z	---▲--- TABD 18/1200Z	---▲--- HMON 18/0600Z	---▲--- AVNO 18/0600Z	---▲--- CMC 18/0000Z
---■--- TVCN 18/1200Z	---■--- TABM 18/1200Z	---■--- GFDN Not Avail	---■--- AEMN 18/0600Z	---■--- CEMN 18/0000Z
---●--- TVCX 18/1200Z	---●--- TABS 18/1200Z	---●--- HWRF 18/0600Z	---●--- APxx 18/0600Z	---●--- UKM 18/0000Z
---●--- NHC 18/0900Z	---●--- NVGM Not Avail	---●--- COTC Not Avail	---●--- NAM Not Avail	---●--- GLP5 18/1200Z

A northwest motion is expected over the next 3 days, followed by turn to the north and northeast.

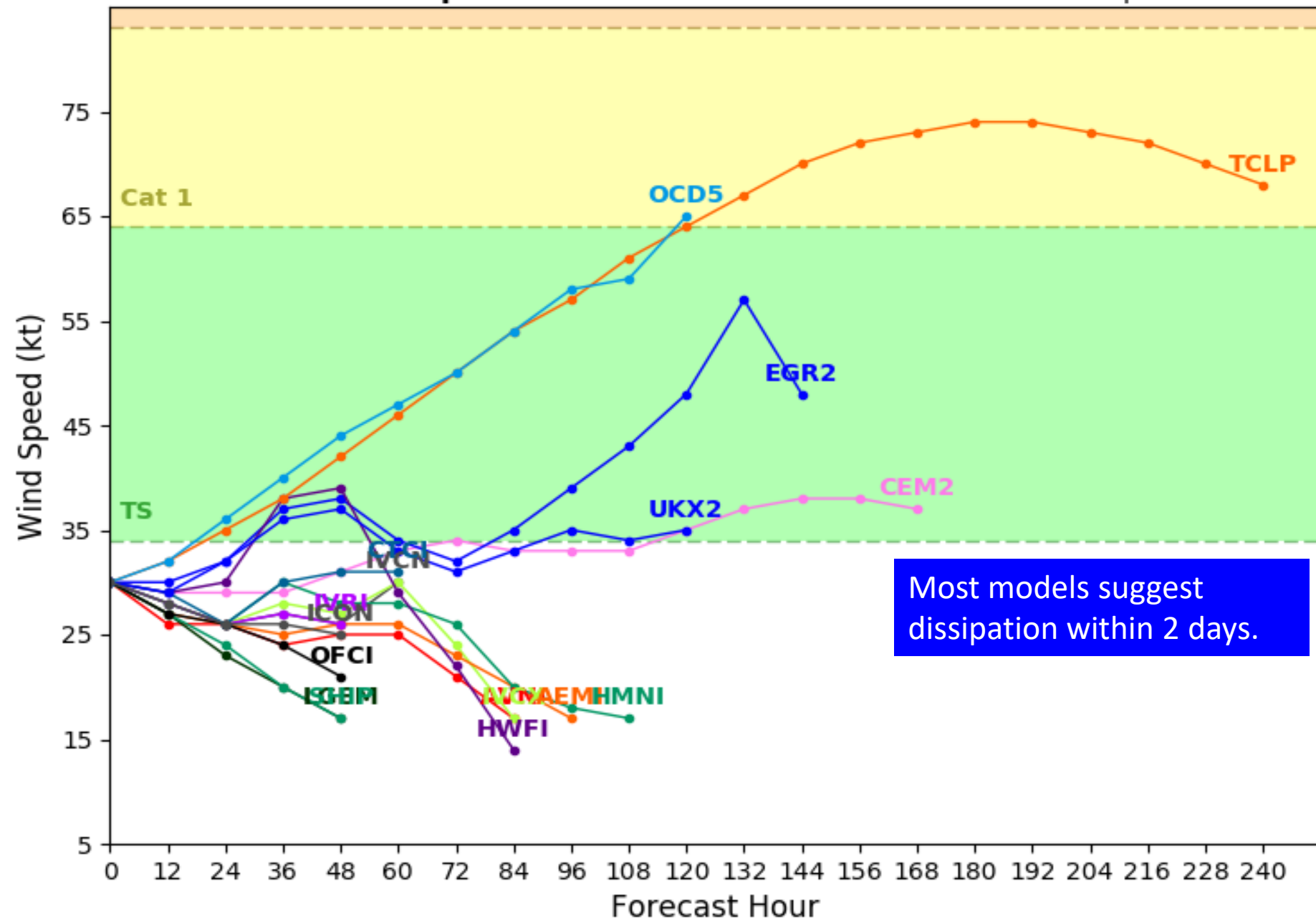


storm_14
 sfwmd.gov
 weather@sfwmd.gov
 18-Sep 08:35EDT

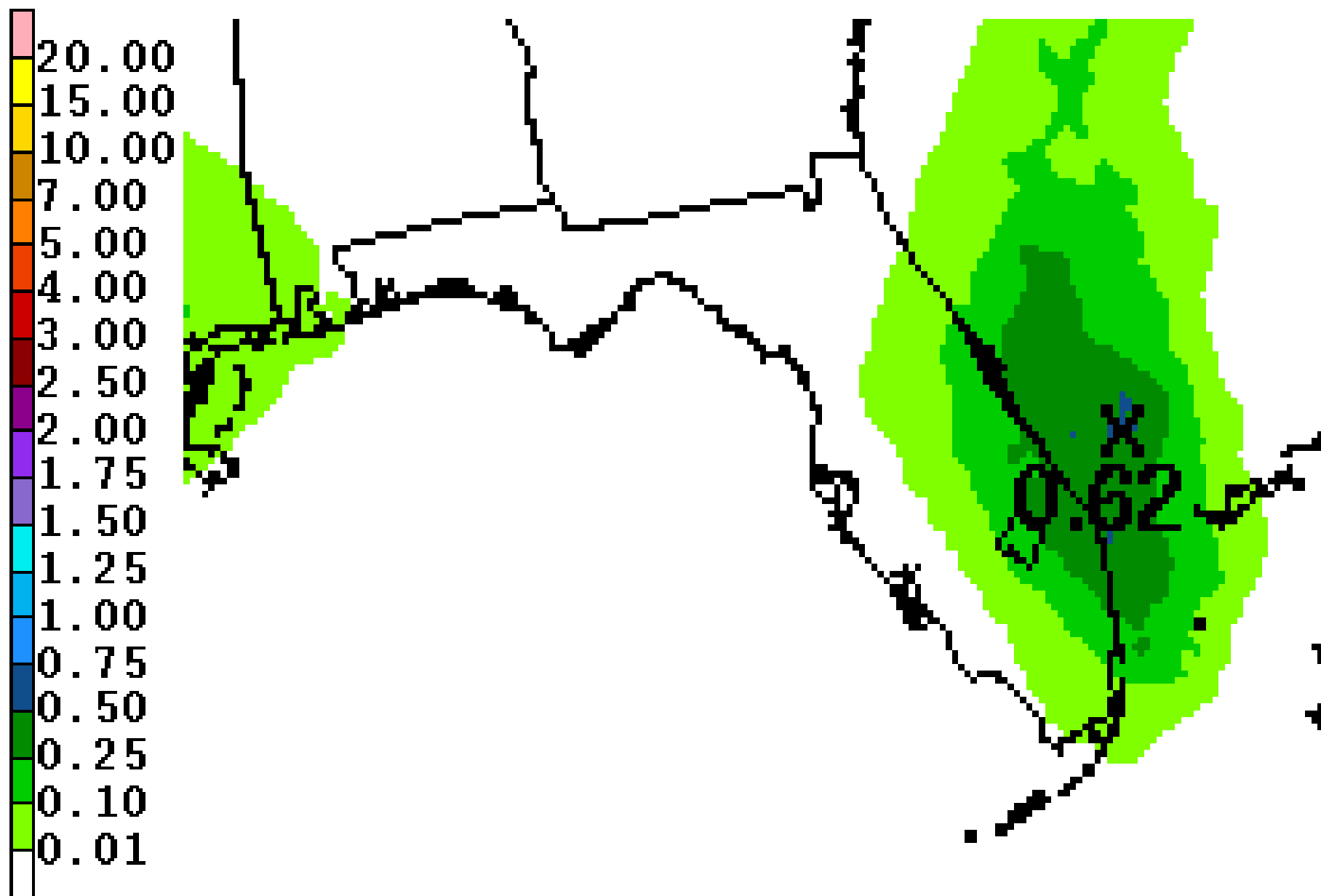
NHC Advisories and County Emergency Management Statements supersede this product.
 This graphic should complement, not replace, NHC discussions.
 If anything on this graphic causes confusion, ignore the entire product.
 For full info, see <http://my.sfwmd.gov/sfwmd/common/images/weather/plots.html>



Levi Cowan - tropicaltidbits.com



Forecast Rainfall, Next 24 Hours



Widespread river flooding continues
across much of the Florida Peninsula

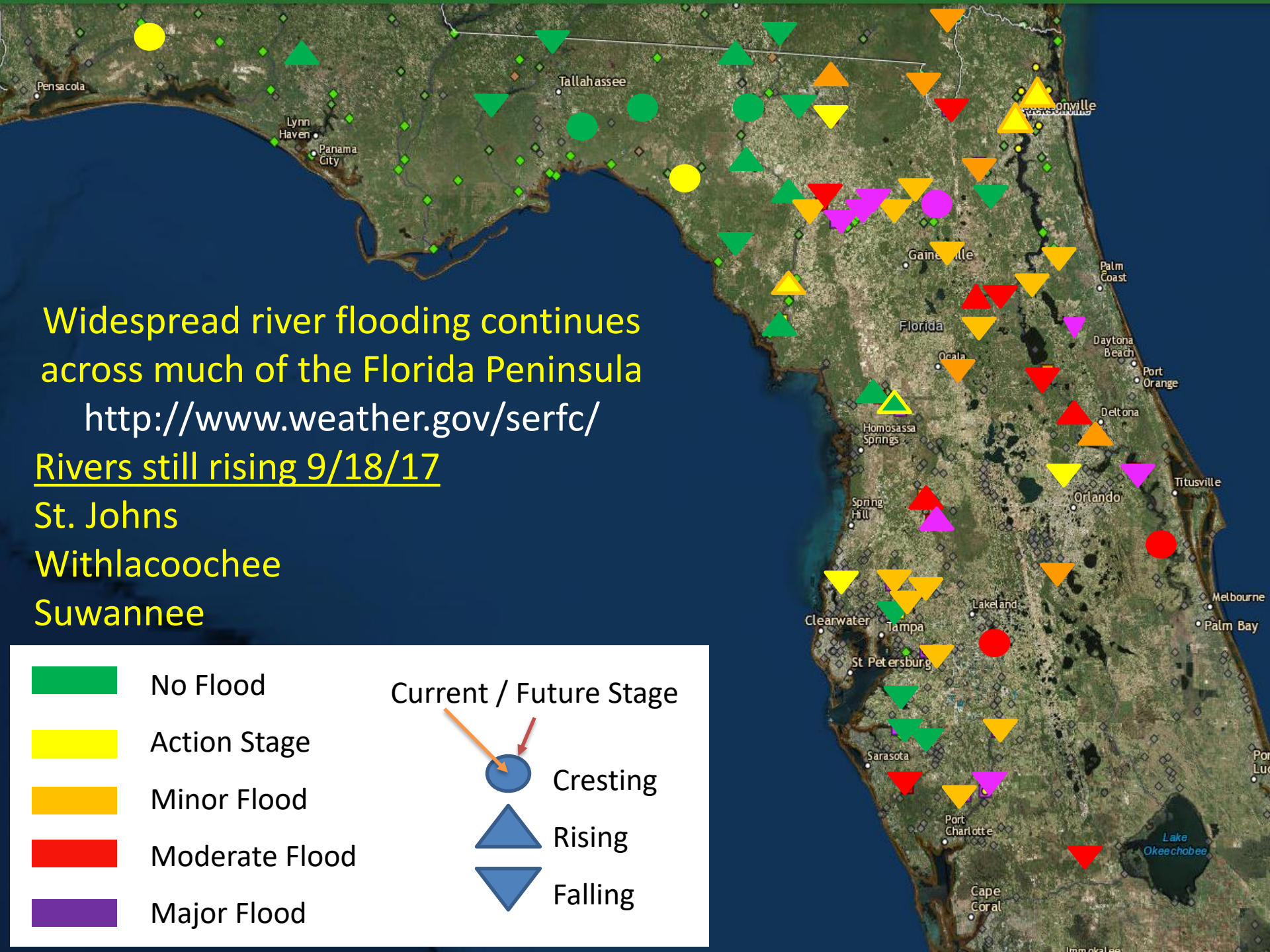
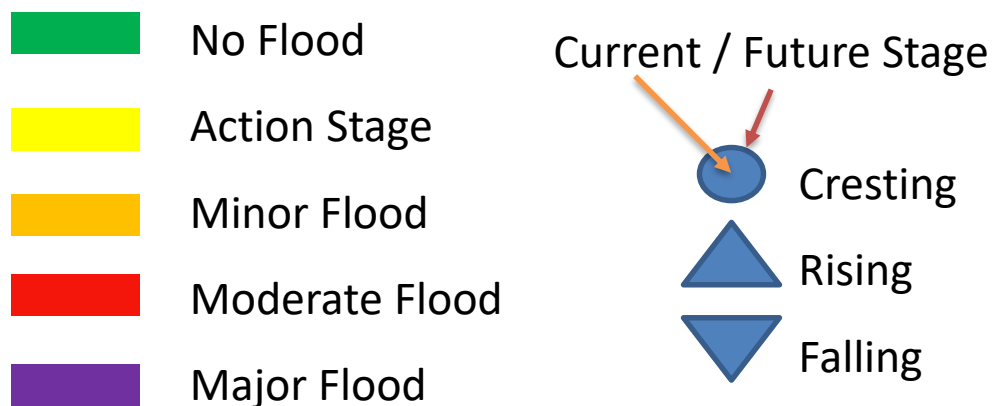
<http://www.weather.gov/serfc/>

Rivers still rising 9/18/17

St. Johns

Withlacoochee

Suwannee



Summary

- At 8am EDT Monday, Hurricane Jose was located about 270 miles east-southeast of Cape Hatteras, North Carolina, or about 640 miles east-northeast of Jacksonville, Florida.
- Maximum sustained winds are near 85 mph. Gradual weakening is expected, but Jose is forecast to remain a hurricane through today and possibly tomorrow.
- Jose is moving toward the north near 9 mph, and this motion should continue today before a slight turn to the north-northeast tomorrow.
- On Wednesday, Jose is forecast to begin a clockwise loop and move northeast, east and south through the end of the week.
- At 5am EDT Monday, Tropical Depression Lee was located in the eastern Atlantic 1,060 miles west of the Cabo Verde Islands, which is about 2,735 miles from Miami, FL.
- Maximum sustained winds have decreased to near 35 mph and Lee should weaken to a remnant low by tonight.
- At 8am EDT Monday, Hurricane Maria was located 85 miles east of Martinique in the Leeward Islands, which is about 1,530 miles southeast of Miami, Florida.
- Maximum sustained winds have increased to 110 mph, making it a Category 2 on the Saffir-Simpson Hurricane Wind Scale.
- Additional strengthening is expected due to favorable conditions and it could be a major hurricane later today.
- Maria is moving towards the west-northeast near 9mph, and this motion should continue for the next few days, moving across the northern Leeward Islands and Puerto Rico.
- After that time, a turn to the northwest is possible, but the track is highly dependent on the track of Jose through the next 5 days.

Florida Outlook

- Extensive river flooding will continue across the Peninsula for several days to weeks.
- A **Coastal Flood Advisory** remains in effect for the St. Johns and its tributaries through this evening.
- Hurricane Jose does not pose a direct threat to Florida, but lingering waves and ocean swells from Jose will keep the rip current risk at high levels along much of the Florida East Coast through the weekend.
- A **High Surf Advisory** is in effect for Northeast and East Central Florida beaches.
- Tropical Depression Lee does not pose a threat to Florida.
- It is too early to tell if Hurricane Maria will be a threat to Florida, but it should be closely monitored.

Another briefing packet will be issued on Monday afternoon. For more information, visit the NHC website at www.hurricanes.gov.



TROPICAL UPDATE

Created by:

Amy Godsey, Chief State Meteorologist

amy.godsey@em.myflorida.com

State Meteorological Support Unit

Florida Division of Emergency Management

Users wishing to subscribe (approval pending) to this distribution list, register at
https://public.govdelivery.com/accounts/FLDEM/subscriber/new?topic_id=SERT_Met_Tropics.

Other reports available for subscription are available at

<https://public.govdelivery.com/accounts/FLDEM/subscriber/new?preferences=true>