



# **TROPICAL UPDATE**

**5 PM EDT**

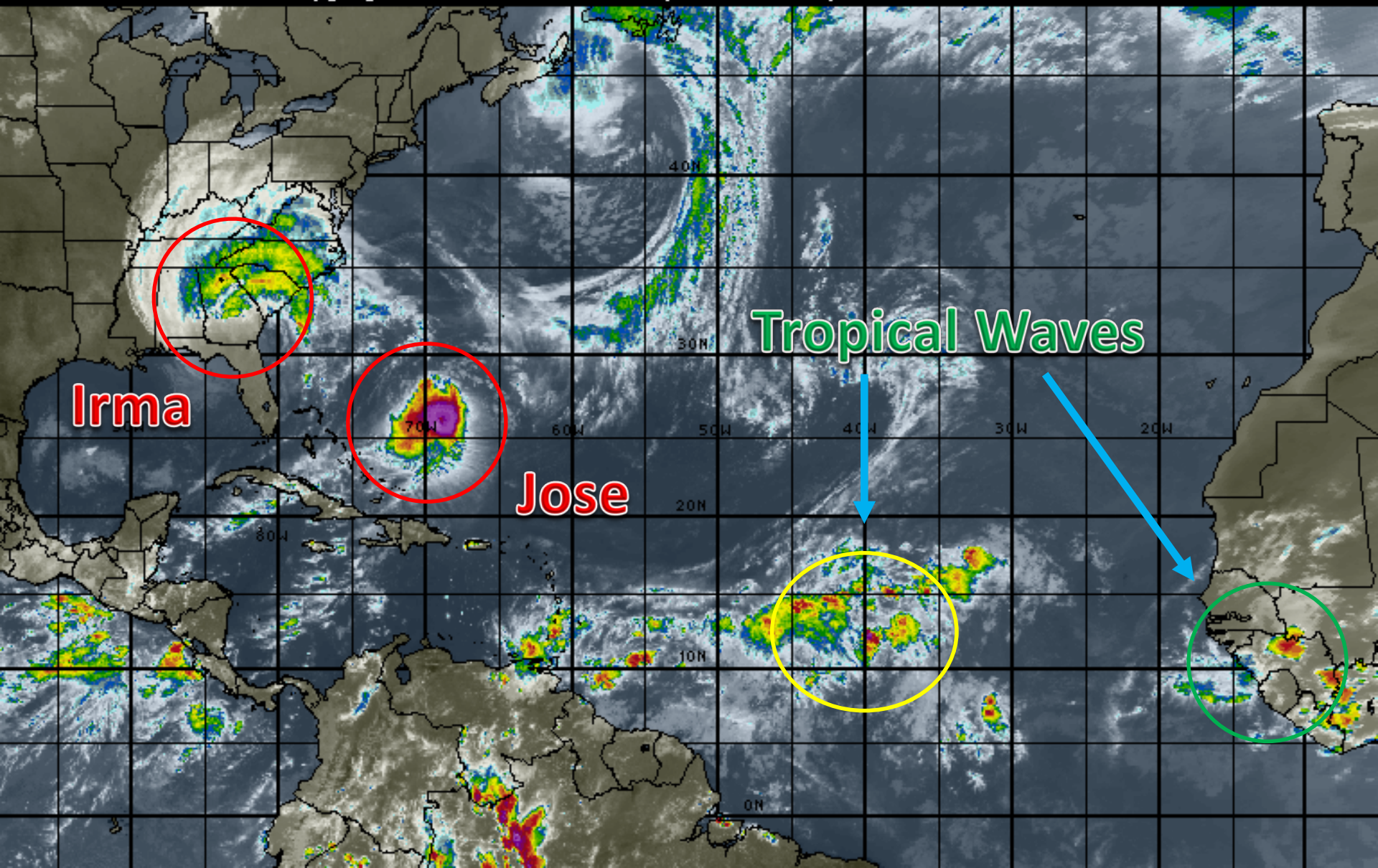
**Monday, September 11, 2017**

**Tropical Storm Irma, Hurricane Jose, & Tropical Wave  
(20%)**

**This update is intended for government and emergency response officials, and is provided for informational and situational awareness purposes only. Forecast conditions are subject to change based on a variety of environmental factors. For additional information, or for any life safety concerns with an active weather event please contact your County Emergency Management or Public Safety Office, local National Weather Service forecast office or visit the National Hurricane Center website at [www.nhc.noaa.gov](http://www.nhc.noaa.gov).**

# Atlantic Basin Satellite Image

18:00 11-SEP-2017 GMT Copyright © 1998-2016 WSI Corporation <http://www.wsi.com>



# Tropical Storm Irma

5 PM EDT Mon Sep 11 2017

Position 31.5°N 84.0°W

Maximum Winds 50 mph

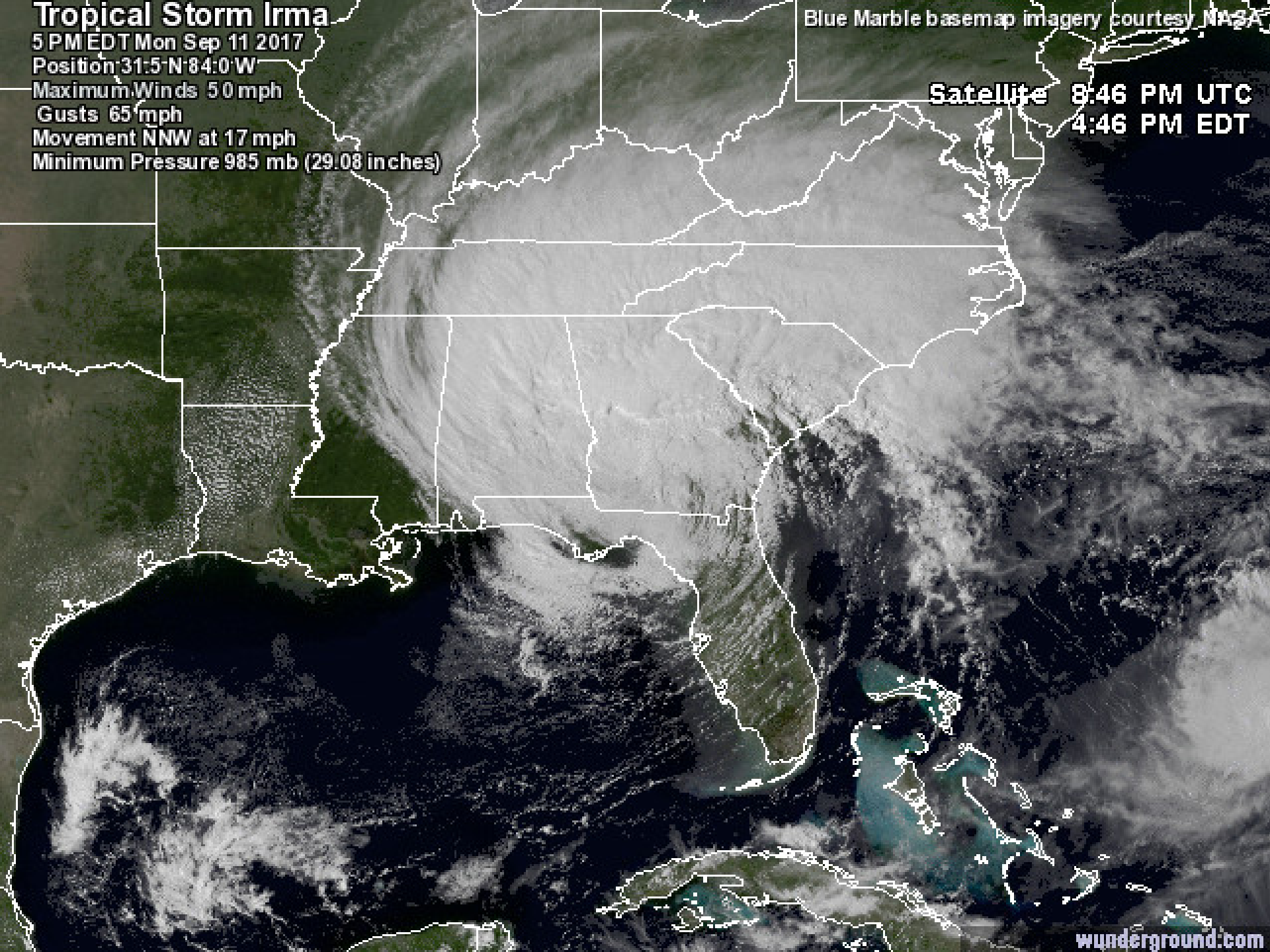
Gusts 65 mph

Movement NNW at 17 mph

Minimum Pressure 985 mb (29.08 inches)

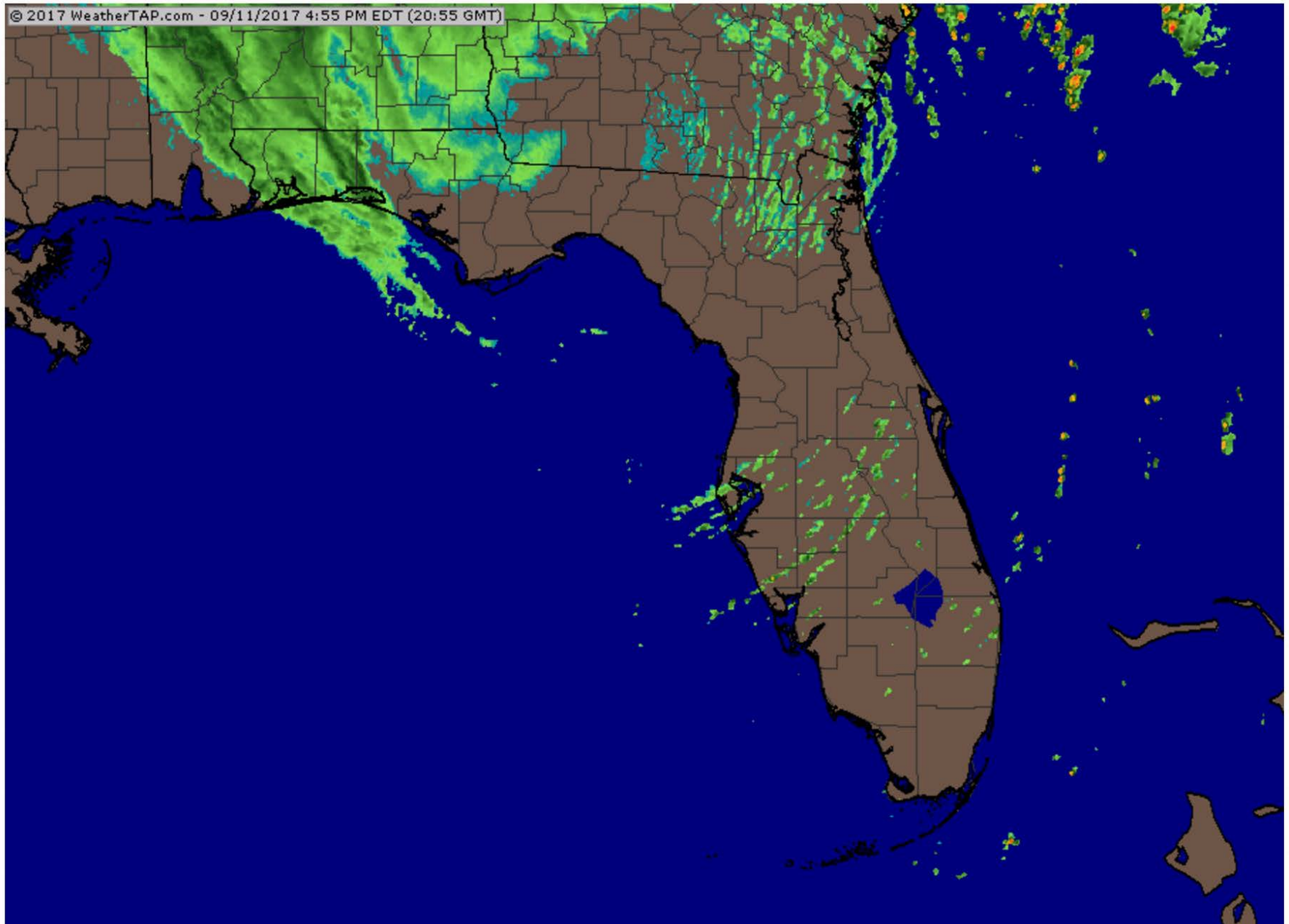
Blue Marble basemap imagery courtesy NASA

Satellite 8:46 PM UTC  
4:46 PM EDT



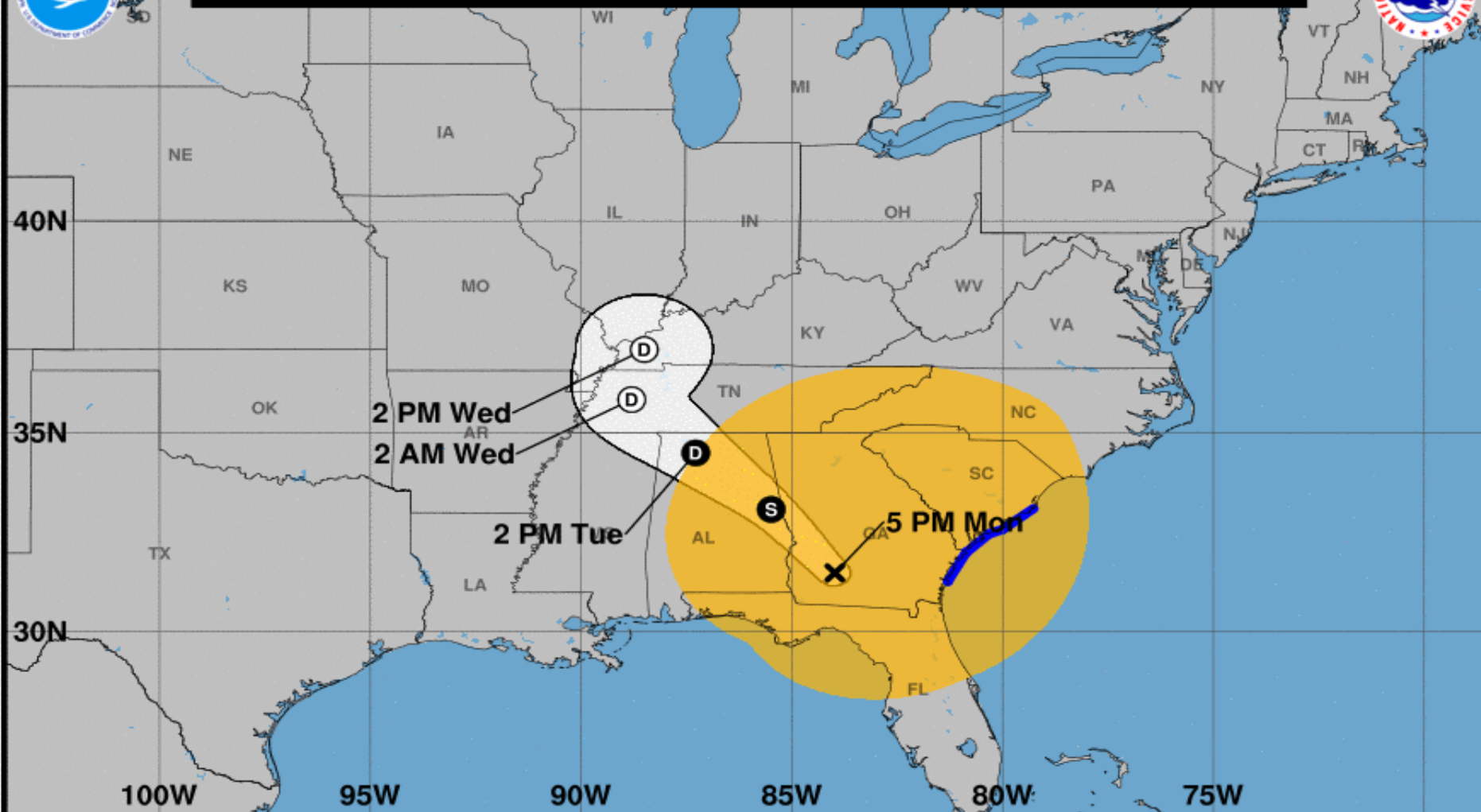


# FL Radar as of 4:55pm EDT Monday





**Note: The cone contains the probable path of the storm center but does not show the size of the storm. Hazardous conditions can occur outside of the cone.**



### Tropical Storm Irma

Monday September 11, 2017

5 PM EDT Advisory 51

NWS National Hurricane Center

### Current information: X

Center location 31.5 N 84.0 W

Maximum sustained wind 50 mph

Movement NNW at 17 mph

### Forecast positions:

● Tropical Cyclone ○ Post/Potential TC

Sustained winds: D < 39 mph

S 39-73 mph H 74-110 mph M > 110 mph

### Potential track area:

Day 1-3 Day 4-5

### Watches:

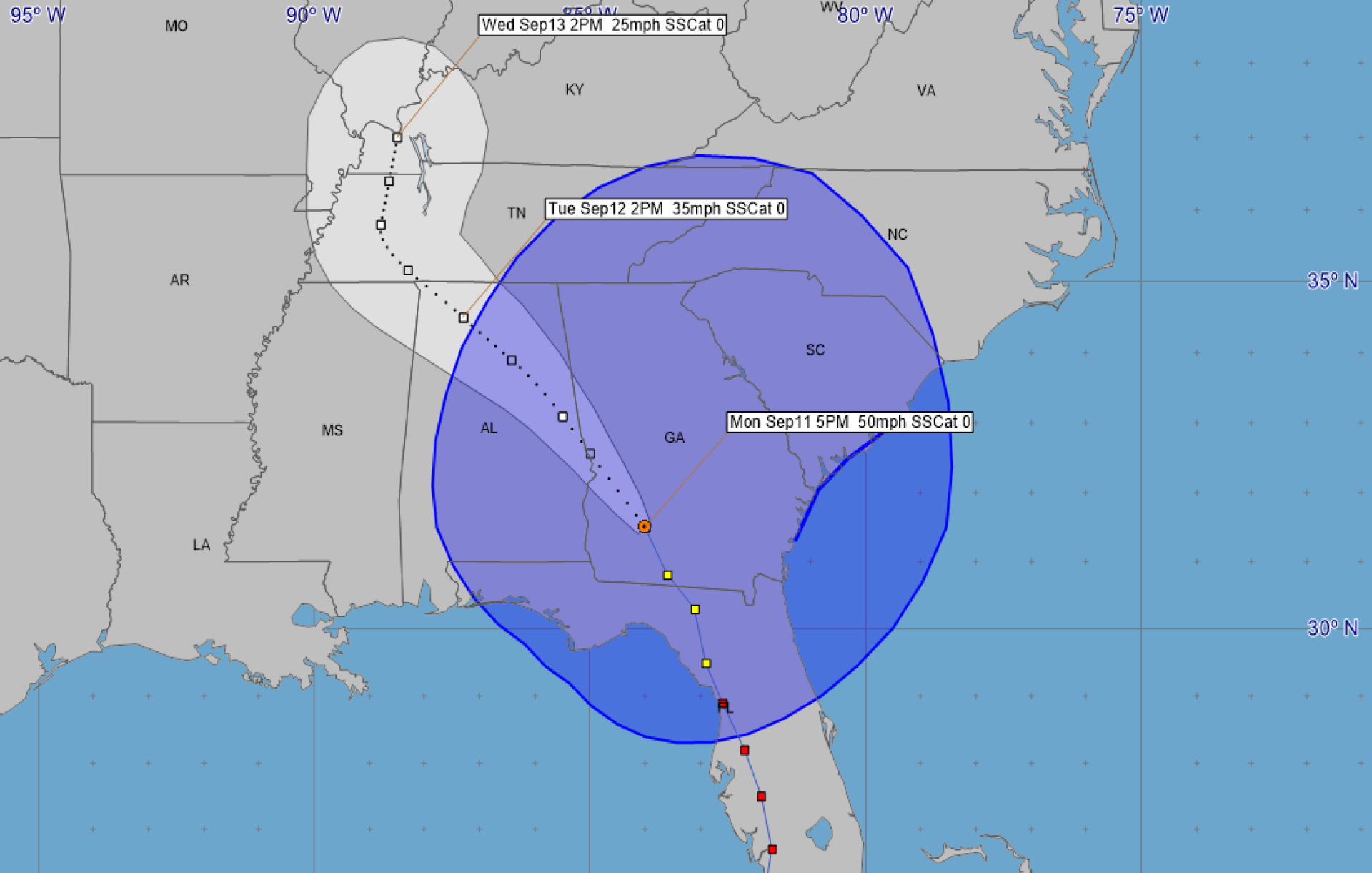
Hurricane Trop Stm

### Warnings:

Hurricane Trop Stm

### Current wind extent:

Hurricane Trop Stm



### Tropical Storm Irma - Monday, September 11, 2017 5 PM EDT Advisory #51

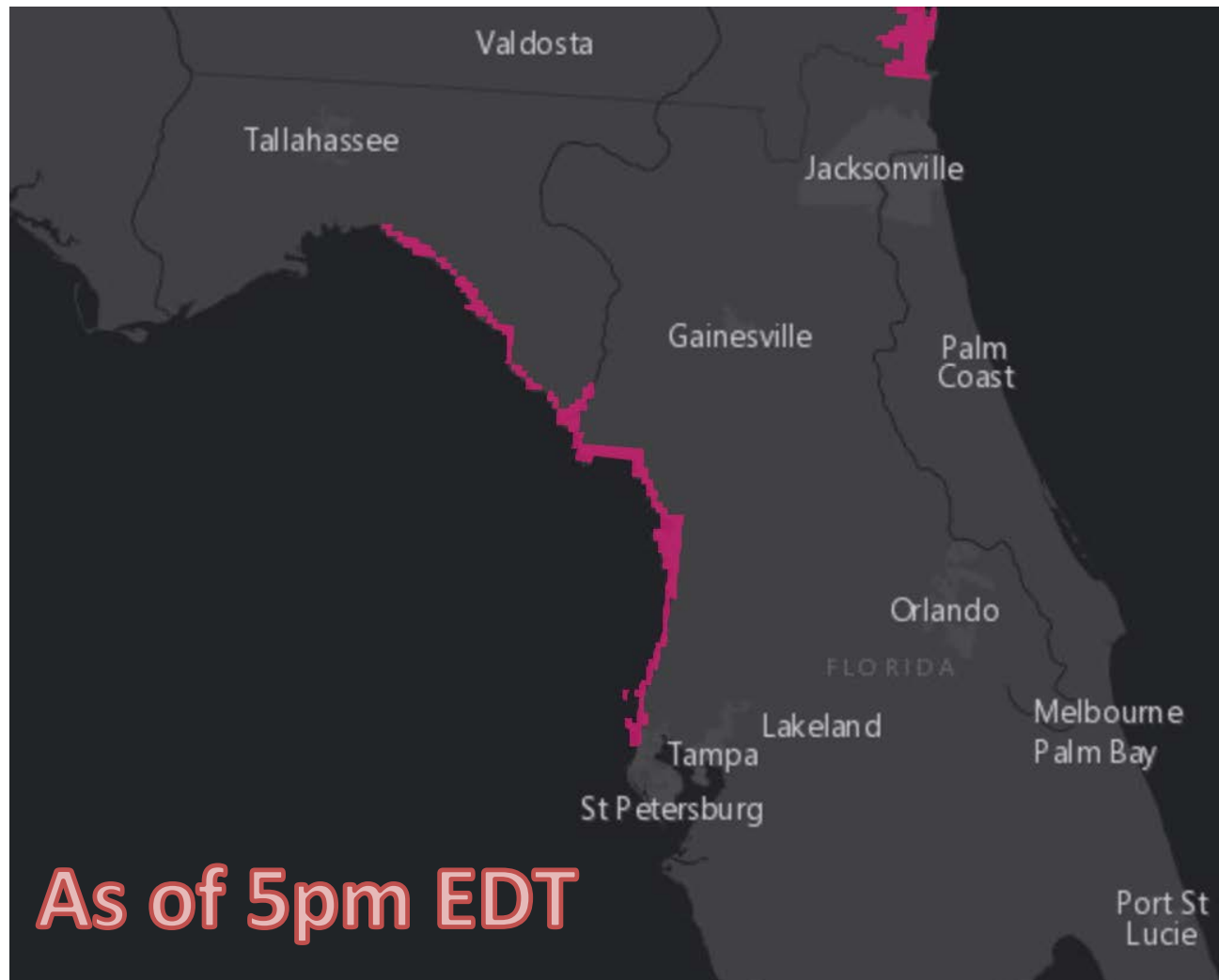
Center Location: 31.5 N 84 W Maximum Sustained Winds: 50 mph Movement: 17 mph NNW

forecast positions Potential Track Area: day 1-3 day 4-5 Surface Wind Field: at current location

Watches: hurricane tropical storm

Warnings: hurricane tropical storm

Sustained Wind Speeds: tropical storm  $\geq 34$ kt/39mph strong tropical storm  $\geq 50$ kt/58mph hurricane  $\geq 64$ kt/74mph



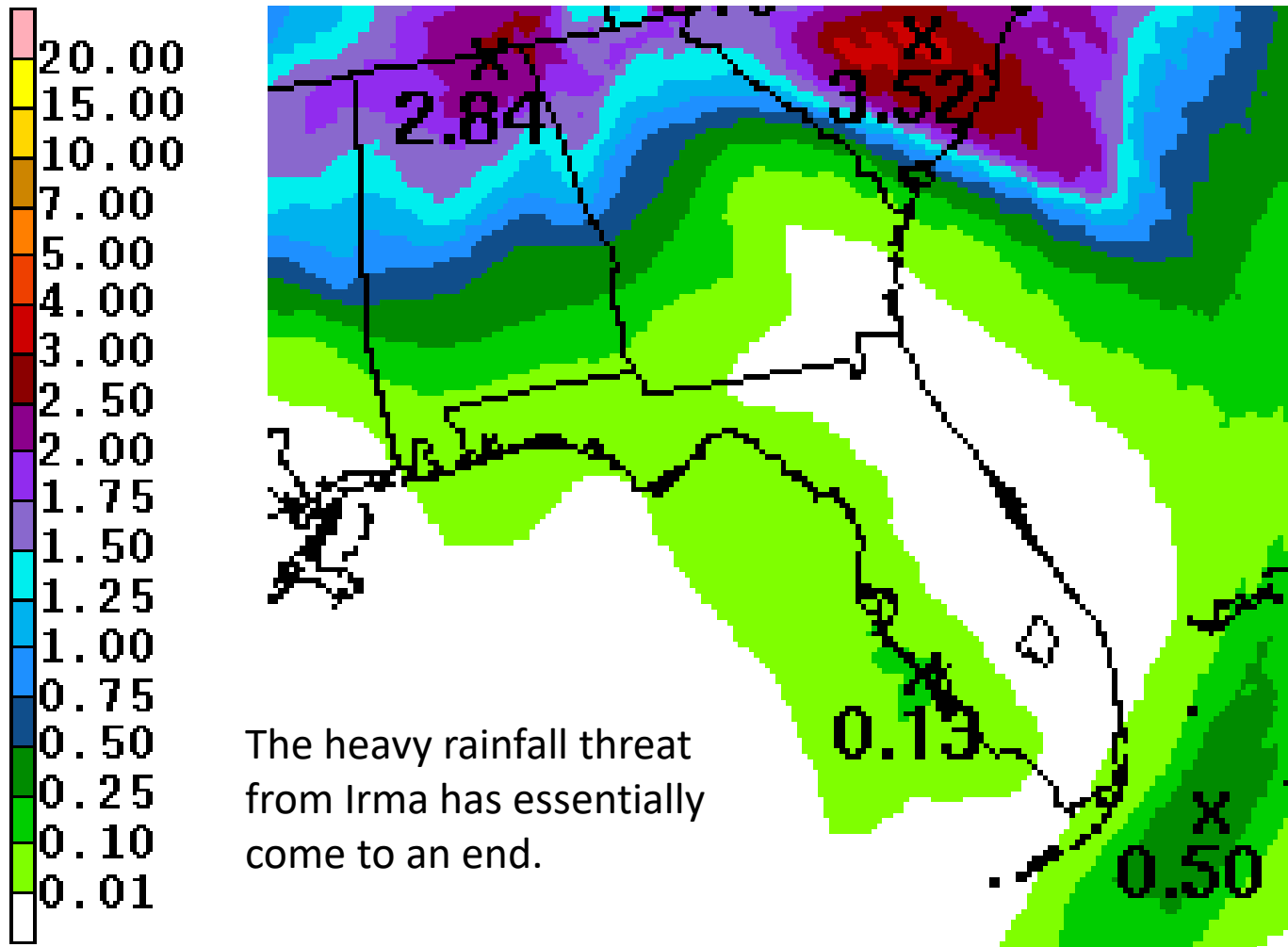
**Storm Surge Warning**  
from Clearwater Beach to  
the Aucilla River

Zoomable maps available  
here:

[http://www.nhc.noaa.gov/  
refresh/graphics\\_at1+shtml/  
1/154730.shtml?wsurge#con  
tents](http://www.nhc.noaa.gov/refresh/graphics_at1+shtml/154730.shtml?wsurge#contents)

Probabilistic Storm Surge  
[http://slosh.nws.noaa.gov/  
/psurge2.0/index.php?S=Ir  
ma2017&Adv=34&Ty=e10  
&Z=z4&D=agl&Ti=cum&M  
sg=17&Help=about](http://slosh.nws.noaa.gov/psurge2.0/index.php?S=Irma2017&Adv=34&Ty=e10&Z=z4&D=agl&Ti=cum&Msg=17&Help=about)

# Forecast Rainfall, Next 24 Hours





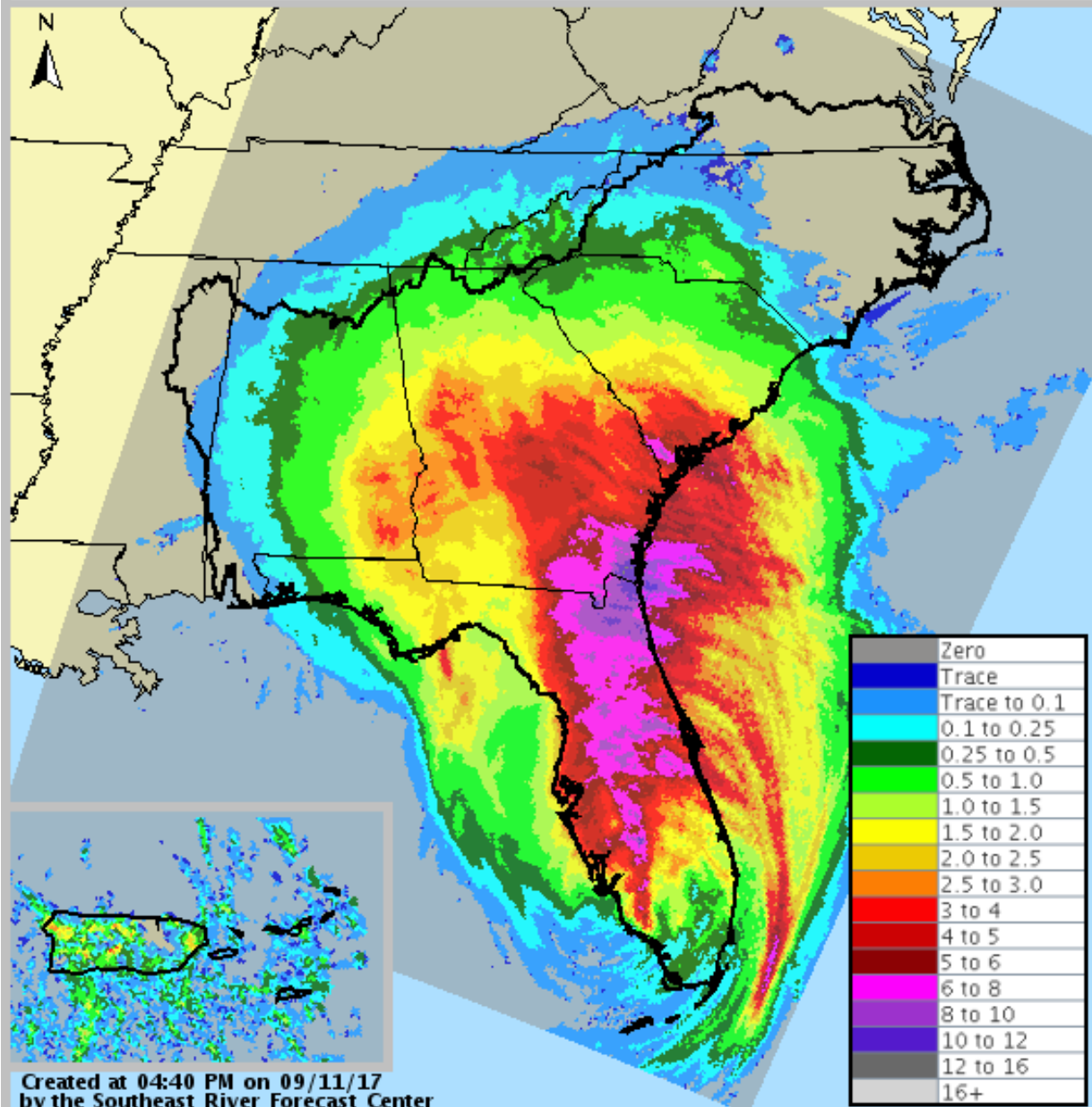


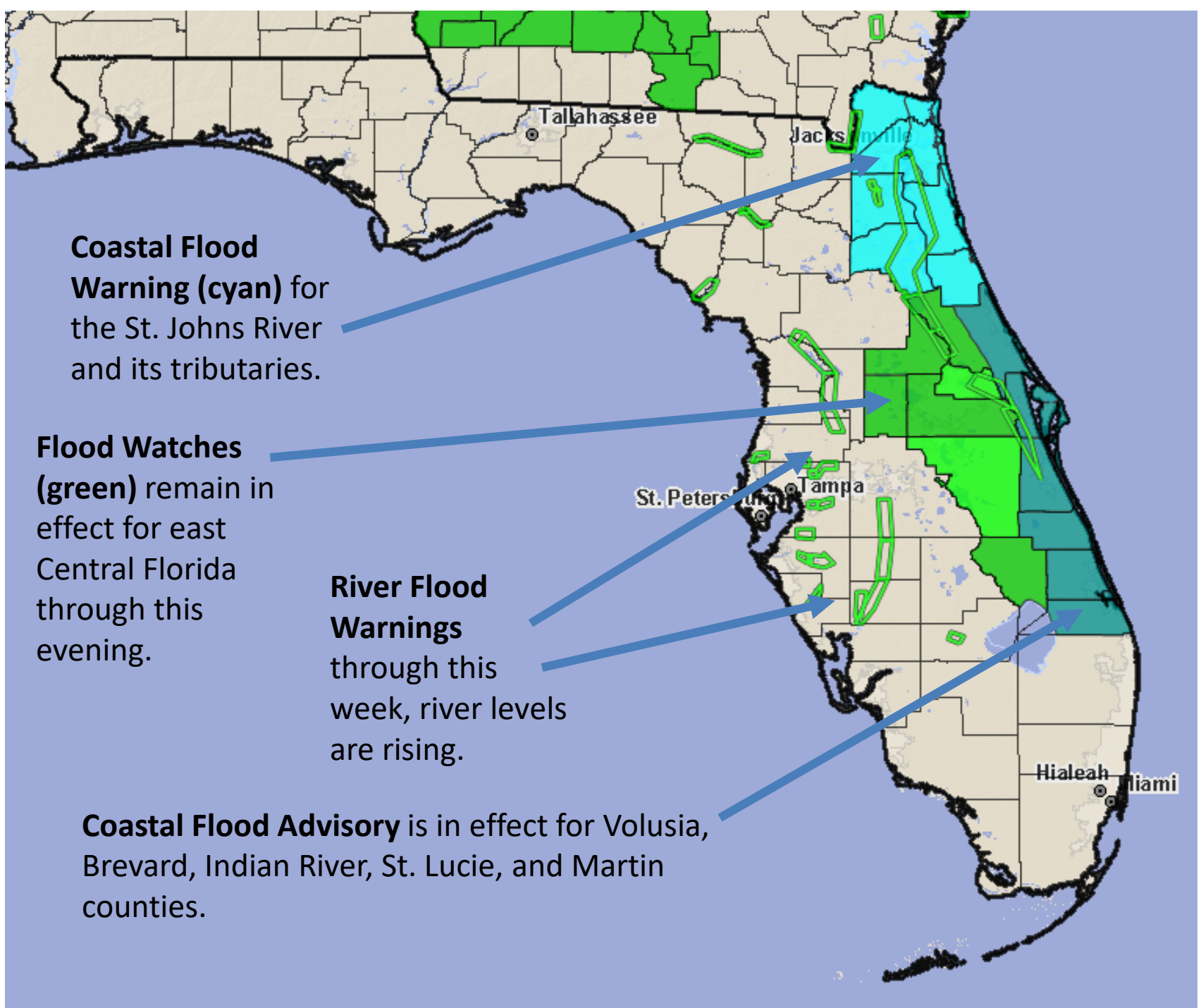
# 24-hour Precipitation

Ending Sep 11, 2017 at 4 pm



A widespread 8-12" has fallen across most of the Peninsula and Northeast Florida, with isolated totals near 15".





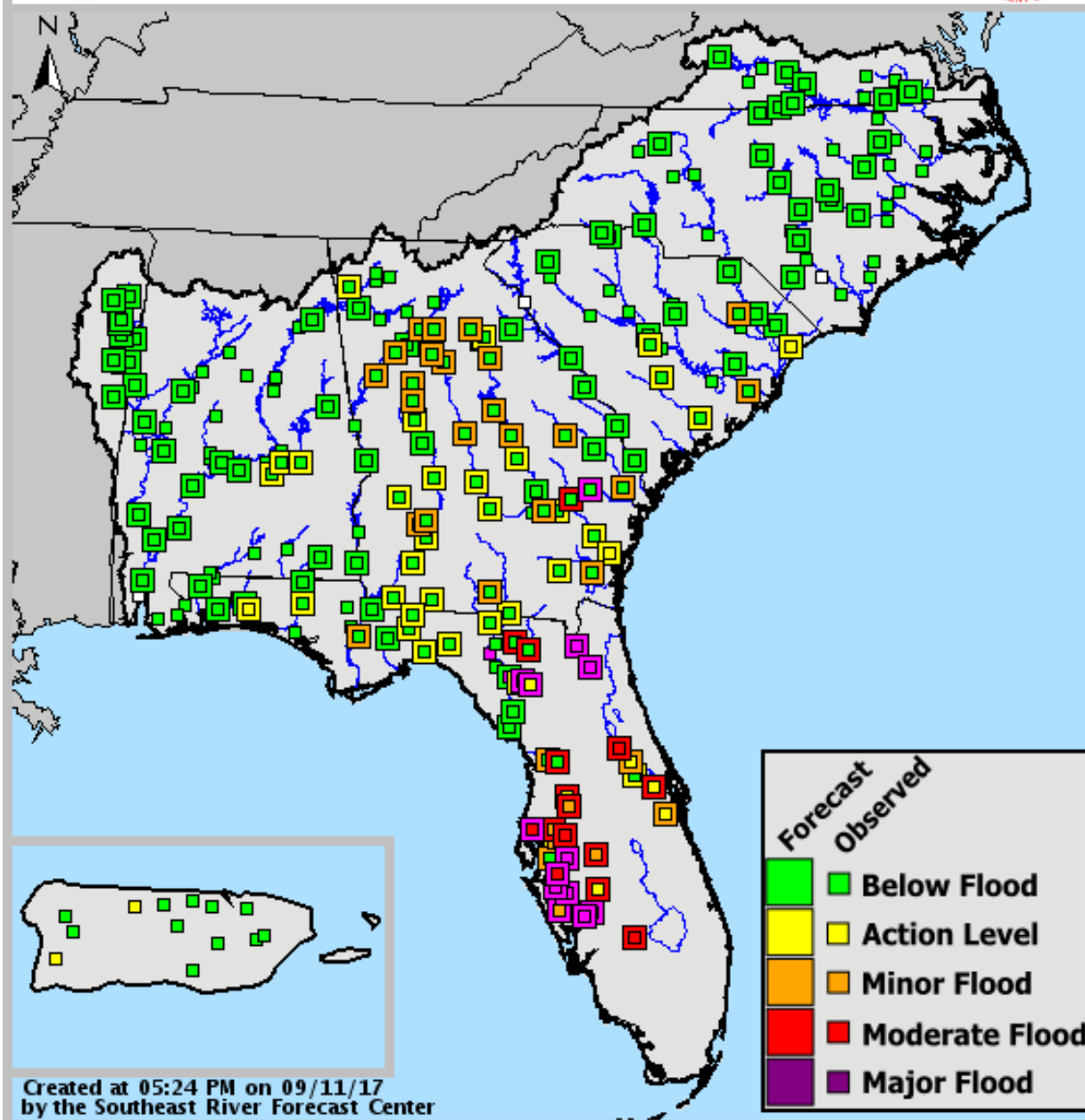


# SERFC River Conditions

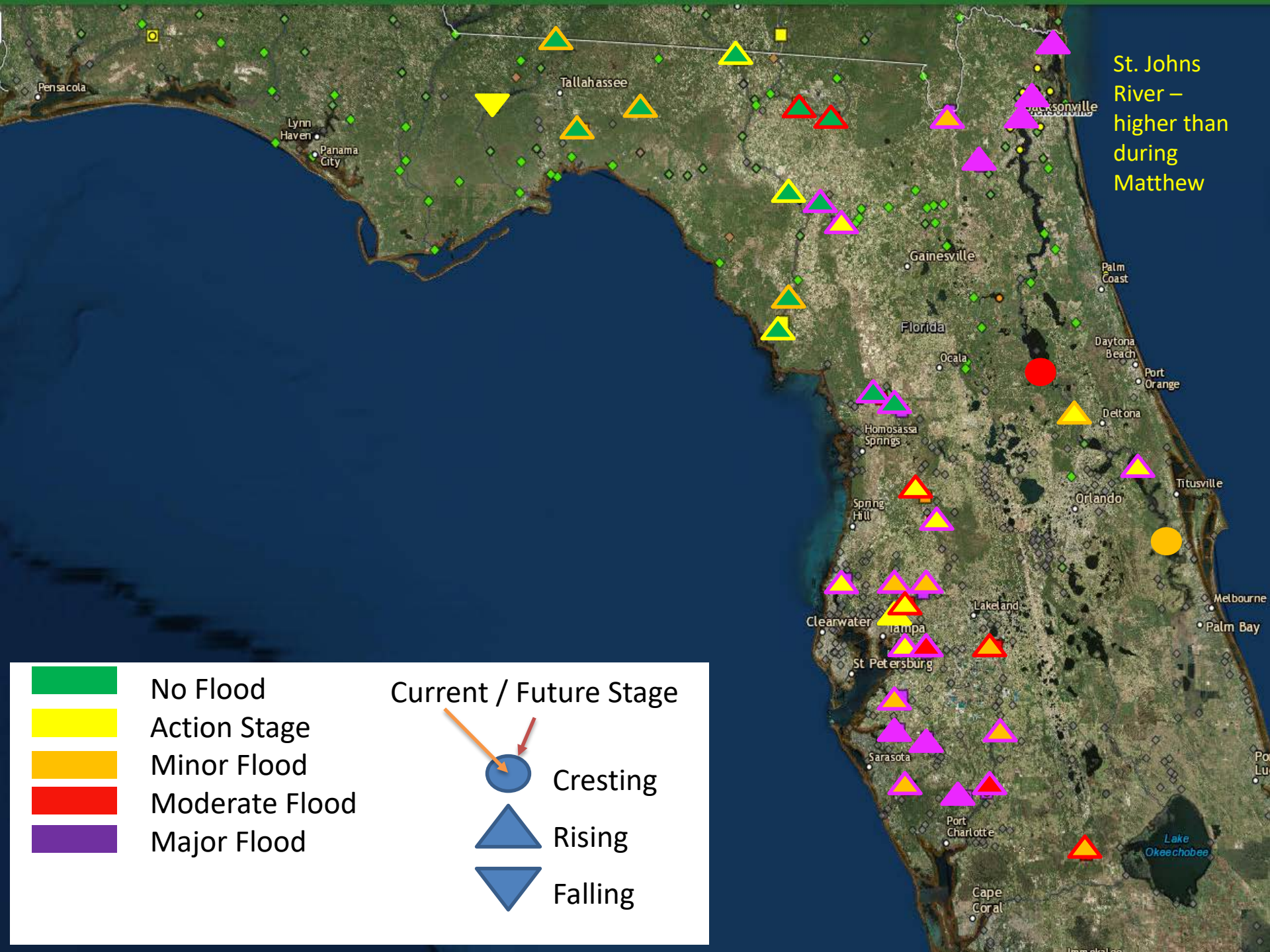
Valid: 09/11/2017 @ 05:24 PM








Extensive  
river  
flooding is  
ongoing  
across  
much of  
the Florida  
Peninsula










St. Johns River –  
higher than  
during  
Matthew

	No Flood
	Action Stage
	Minor Flood
	Moderate Flood
	Major Flood


Current / Future Stage



Cresting



Rising



Falling



# Hurricane Jose

5 PM EDT Mon Sep 11 2017

Position 26.4 N 69.2 W

Maximum Winds 95 mph

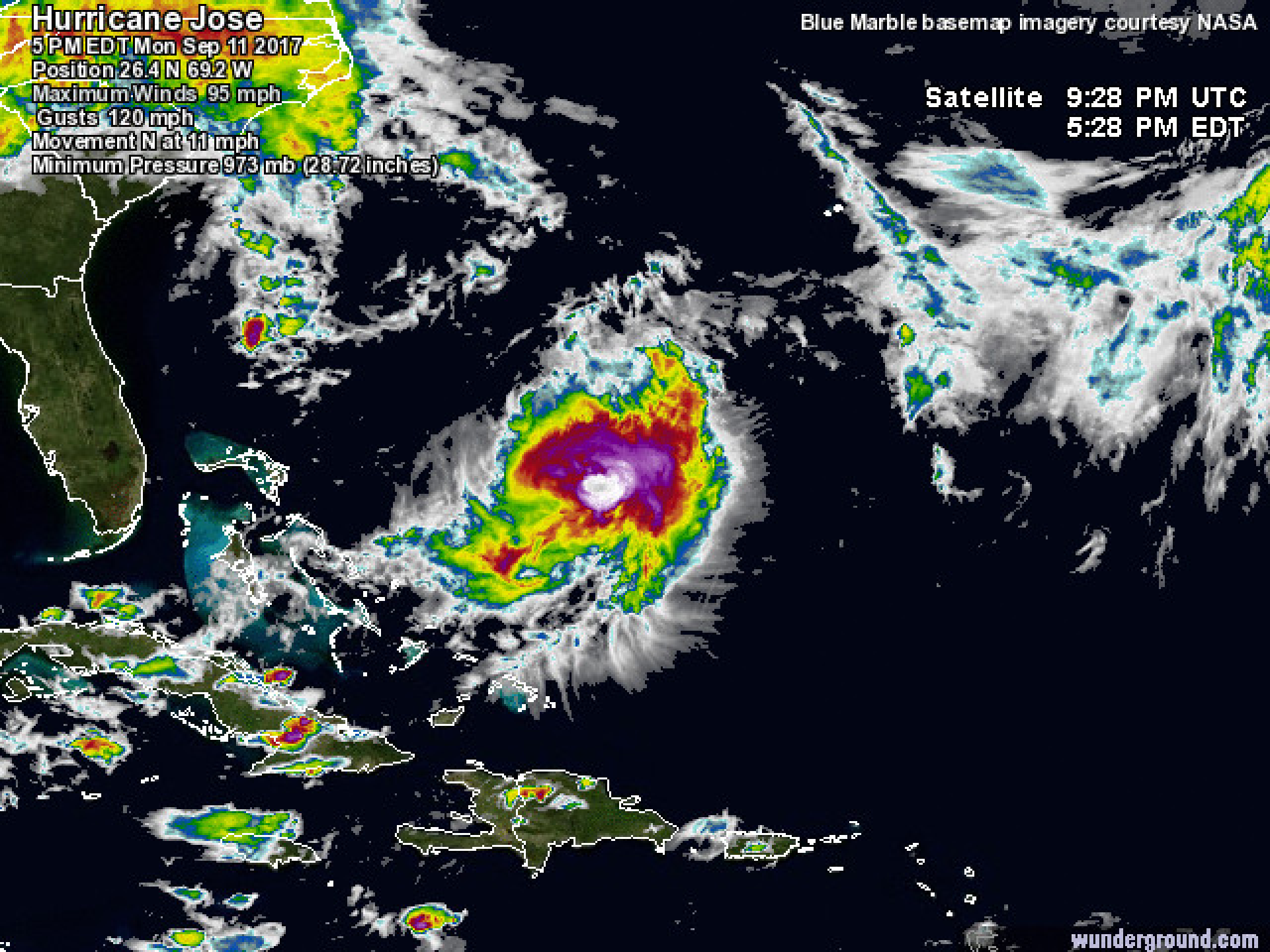
Gusts 120 mph

Movement N at 11 mph

Minimum Pressure 973 mb (28.72 inches)

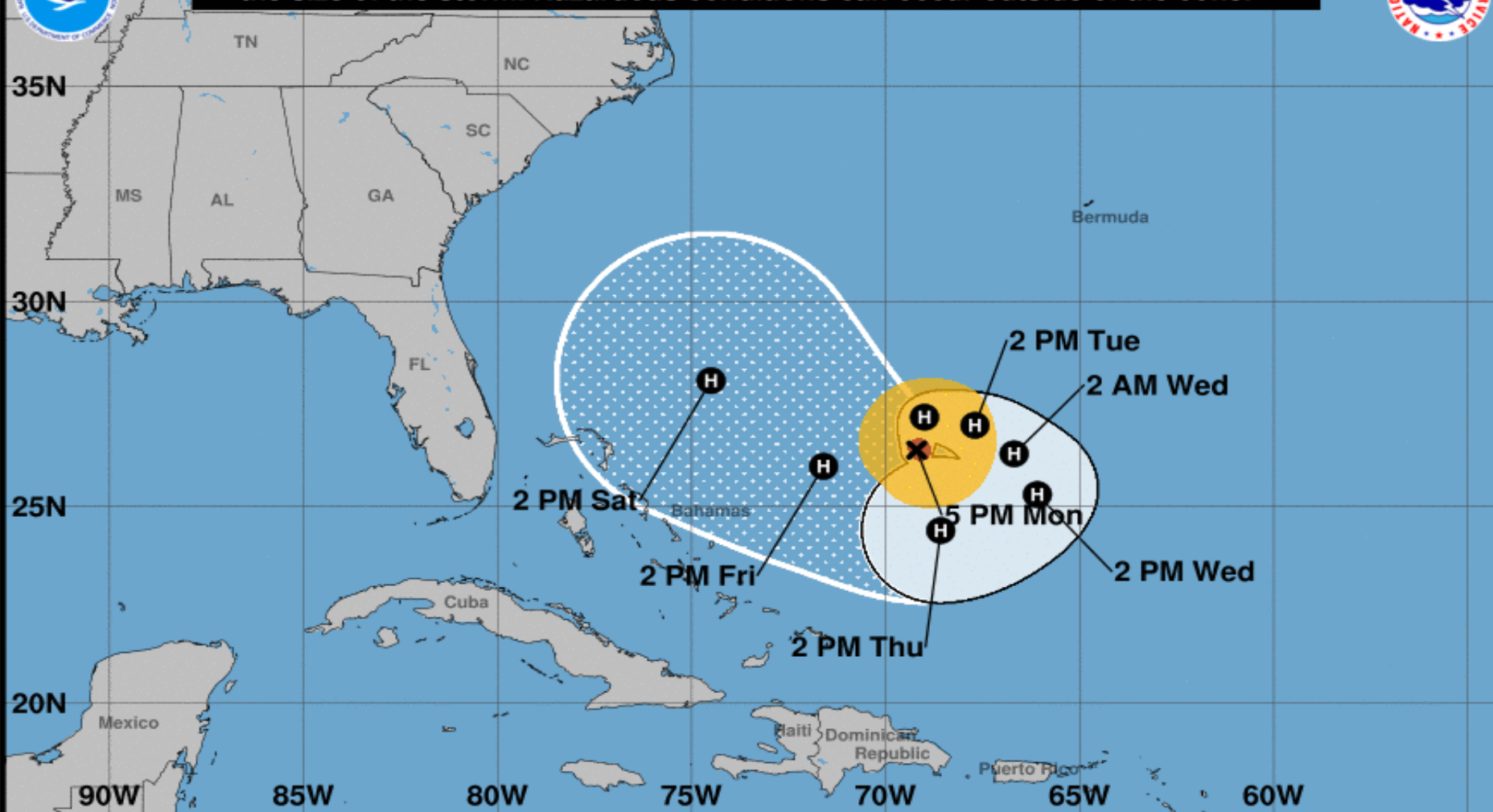
Blue Marble basemap imagery courtesy NASA

Satellite 9:28 PM UTC  
5:28 PM EDT





**Note: The cone contains the probable path of the storm center but does not show the size of the storm. Hazardous conditions can occur outside of the cone.**



## Hurricane Jose

Monday September 11, 2017

5 PM AST Advisory 26

NWS National Hurricane Center

## Current information: x

Center location 26.4 N 69.2 W

Maximum sustained wind 100 mph

Movement N at 12 mph

## Forecast positions:

● Tropical Cyclone ○ Post/Potential TC

Sustained winds: D < 39 mph  
S 39-73 mph H 74-110 mph M > 110 mph

## Potential track area:

Day 1-3 Day 4-5

## Watches:

Hurricane Trop Stm

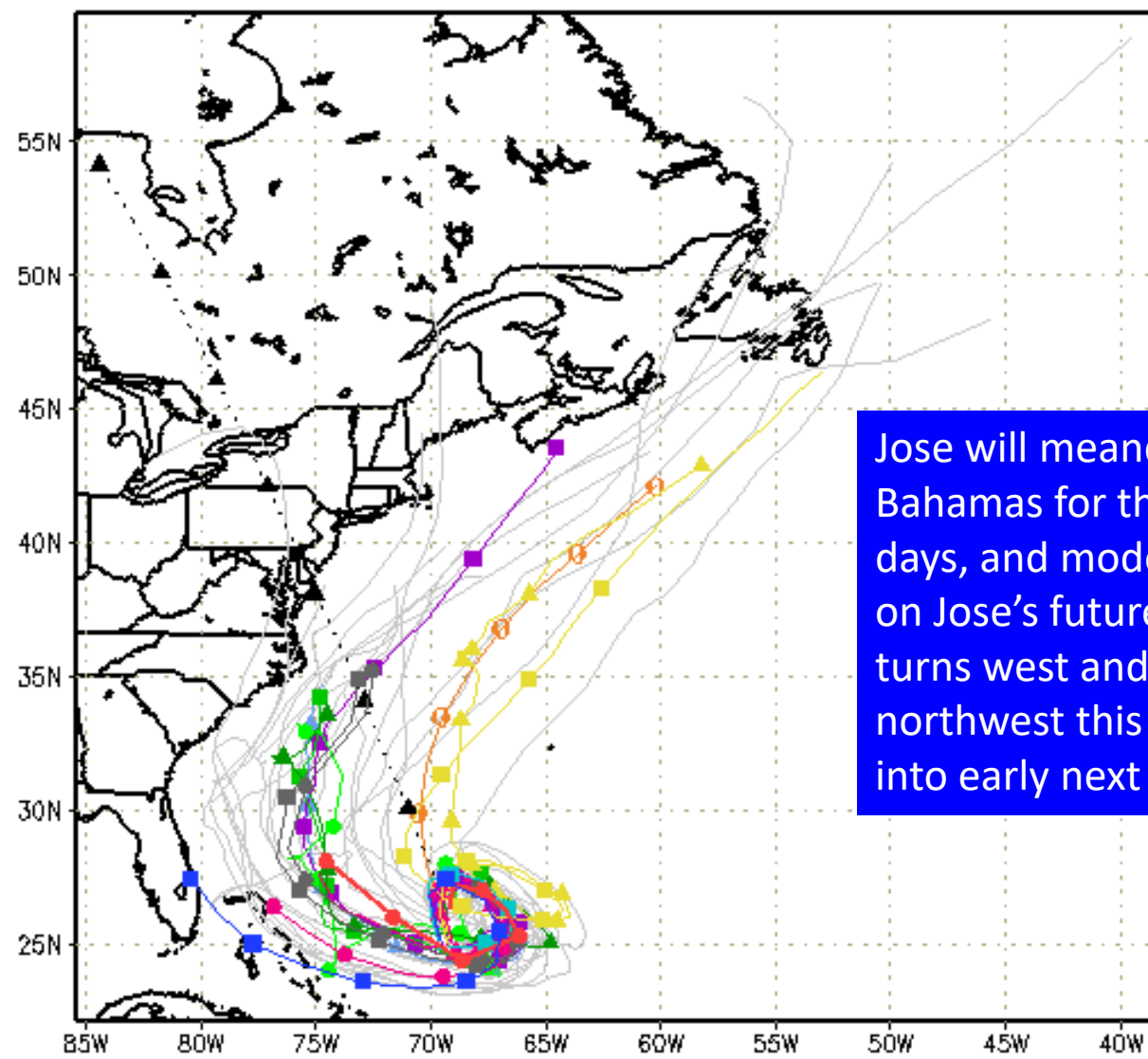
## Warnings:

Hurricane Trop Stm

## Current wind extent:

Hurricane Trop Stm

...▲... XTRP 11/1800Z	▲ TABD 11/1800Z	▲ HMON 11/1200Z	▲ AVNO 11/1200Z	▲ GCM 11/1200Z
■ TVCN 11/1800Z	■ TABM 11/1800Z	■ GFDN Not Avail	■ AEMN 11/1200Z	■ GEMN 11/1200Z
● TVCX 11/1800Z	● TABS 11/1800Z	● HWRF 11/1200Z	— APxx 11/1200Z	■ UKM 11/1200Z
● NHC 11/2100Z	● NVGM Not Avail	● COTC Not Avail	● NAM 11/1200Z	● GLP5 11/1800Z



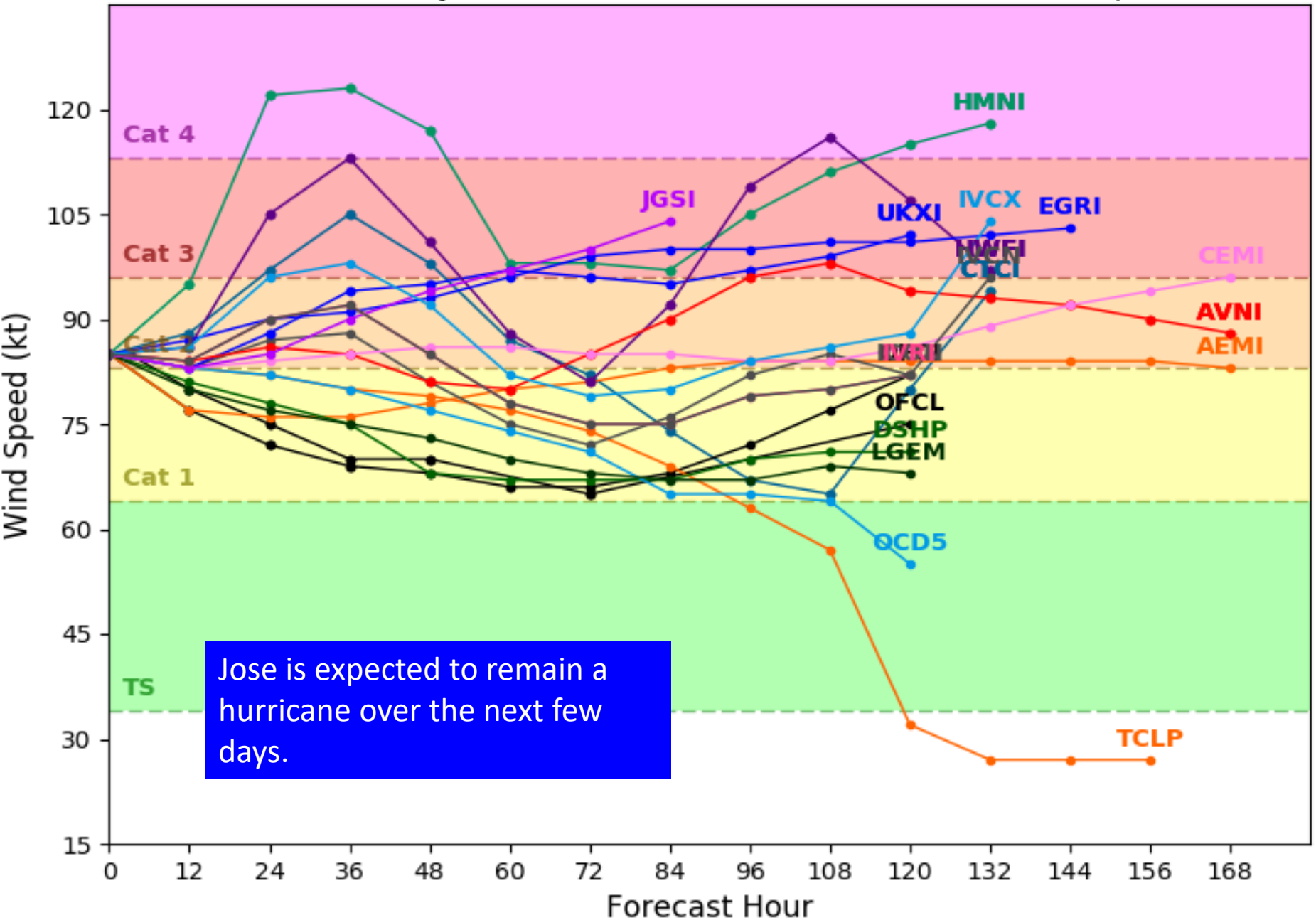
Jose will meander east of the Bahamas for the next few days, and models disagree on Jose's future track as it turns west and then northwest this weekend and into early next week.



# Hurricane JOSE Model Intensity Guidance

Initialized at 18z Sep 11 2017

Levi Cowan - tropicaltidbits.com







# Five-Day Graphical Tropical Weather Outlook

National Hurricane Center Miami, Florida



www.hurricanes.gov

All Disturbances

\* Formation chance through 48 hours...**low**...20 percent.  
\* Formation chance through 5 days... **low**...20 percent.

IRMA

JOSE

2:00 pm EDT  
Mon Sep 11 2017

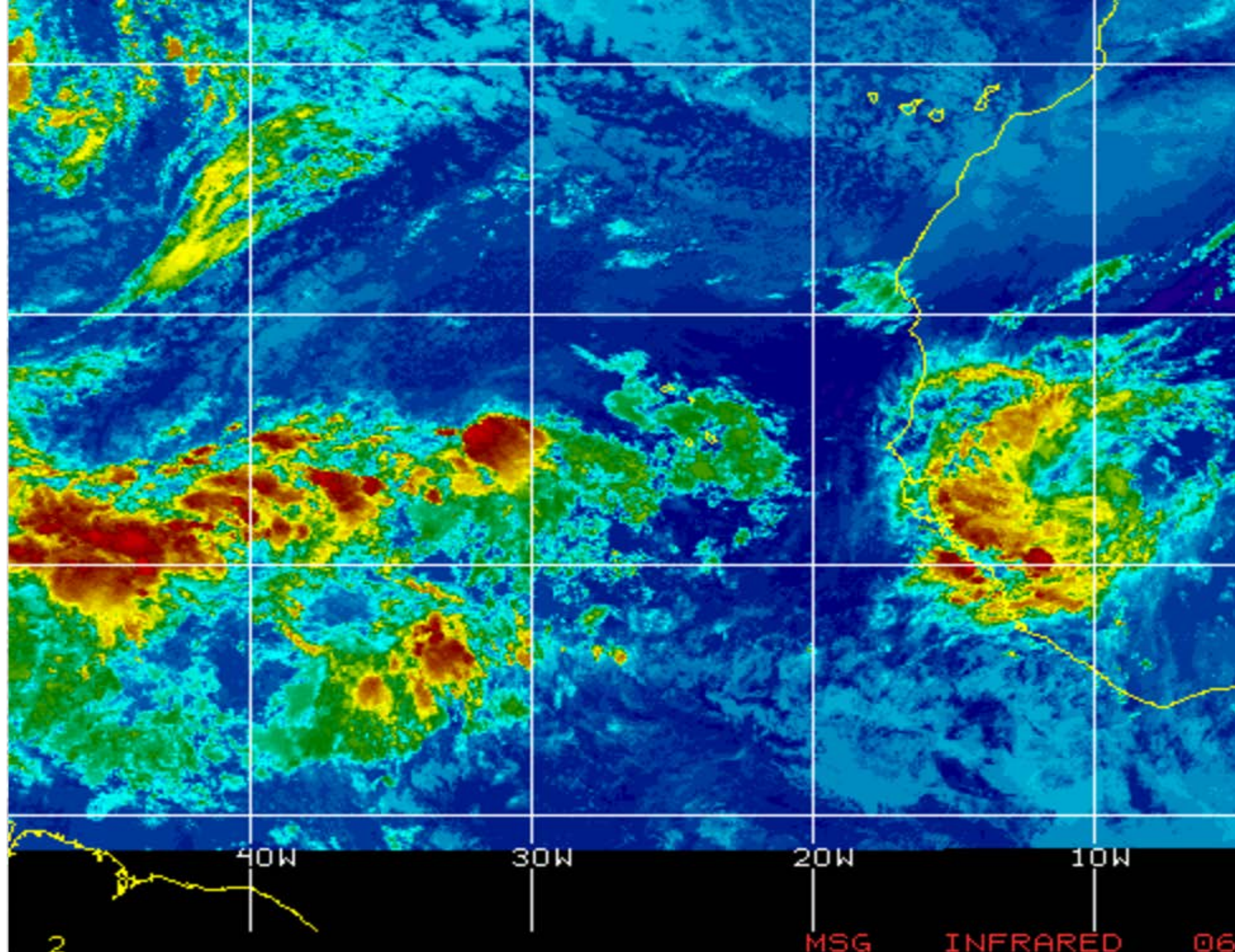
100°W 90°W 80°W 70°W 60°W 50°W 40°W 30°W 20°W

Current Disturbances and Five-Day Cyclone Formation Chance: < 40% 40-60% > 60%

Tropical or Sub-Tropical Cyclone: Depression Storm Hurricane

Post-Tropical Cyclone Remnants





# Summary

- At 5pm EDT Monday, Tropical Storm Irma was moving north-northwest at 17 mph with maximum sustained winds of 50 mph and was located about 10 miles east of Albany, Georgia.
  - Irma will continue to weaken due to wind shear and land interaction, and it should become a tropical depression on Tuesday.
  - On the current forecast track, Irma will continue moving over southwestern Georgia tonight and into Alabama on Tuesday.
  - Tropical storm force winds and gusts are expected to continue through midnight in portions of North Florida.
- 
- At 5pm EDT Monday, Hurricane Jose was located about 360 miles east of Grand Turk Island, or about 700 miles east of Miami.
  - Maximum sustained winds are near 100 mph, which makes Jose a category 2 storm on the Saffir-Simpson Hurricane Wind Scale.
  - Jose has weakened but is expected to remain a hurricane while it moves very little over the next couple of days. By the end of the week, Jose is expected to begin to move west and then north, but there is great uncertainty in its exact future track beyond the next three or four days.
- 
- A tropical wave located several hundred miles west of the Cabo Verde Islands continues to produce disorganized showers and thunderstorms.
  - Some development is possible over the next day or two before wind shear increases, and there is a 20% (low) chance of development over the next 48 hours and the next five days as it moves northwest and then north over the central Atlantic.

# Florida Outlook

- All hurricane and tropical storm warnings in have been discontinued in Florida.
- A **Storm Surge Warning** remains in effect from the Aucilla River southward to Clearwater Beach, where 4 to 6 feet of inundation above ground could occur at high tide.
- 1 to 3 feet of inundation also remains possible from the Ochlockonee River to the Aucilla River and from Clearwater Beach to Bonita Beach, including Tampa Bay.
- The focus on Irma's impacts has quickly shifted to river flooding. Most river gages along the St. Johns River and its tributaries are in **major flood stage**, and some have risen above record levels. A **Coastal Flood Warning** is in effect for the St. Johns and its tributaries, as well as the Trout River, until noon EDT on Thursday.
- Many west Central Florida rivers are in major flood stage as well, and **River Flood Warnings** are in effect for these and other rivers in flood stage in the region.
- It may be several days before river floodwaters recede.
- A **Flood Watch** remains in effect for east Central Florida through this evening.
- A **Coastal Flood Advisory** is in effect for Volusia, Brevard, Indian River, St. Lucie, and Martin counties, as high surf from Irma may cause minor coastal flooding at high tide overnight.
- Hurricane Jose does not pose a threat to Florida within the next 5 days, but it should be monitored.

Another briefing packet will be issued Tuesday morning. For more information, visit the NHC website at [www.hurricanes.gov](http://www.hurricanes.gov).





# TROPICAL UPDATE

Created by:

William Watson, Assistant State Meteorologist

[Michael.spagnolo@em.myflorida.com](mailto:Michael.spagnolo@em.myflorida.com)

State Meteorological Support Unit

Florida Division of Emergency Management

Users wishing to subscribe (approval pending) to this distribution list, register at  
[https://public.govdelivery.com/accounts/FLDEM/subscriber/new?topic\\_id=SERT\\_Met\\_Tropics](https://public.govdelivery.com/accounts/FLDEM/subscriber/new?topic_id=SERT_Met_Tropics).

Other reports available for subscription are available at

<https://public.govdelivery.com/accounts/FLDEM/subscriber/new?preferences=true>