



# **TROPICAL UPDATE**

**5 PM EDT**

**Sunday, September 10, 2017**

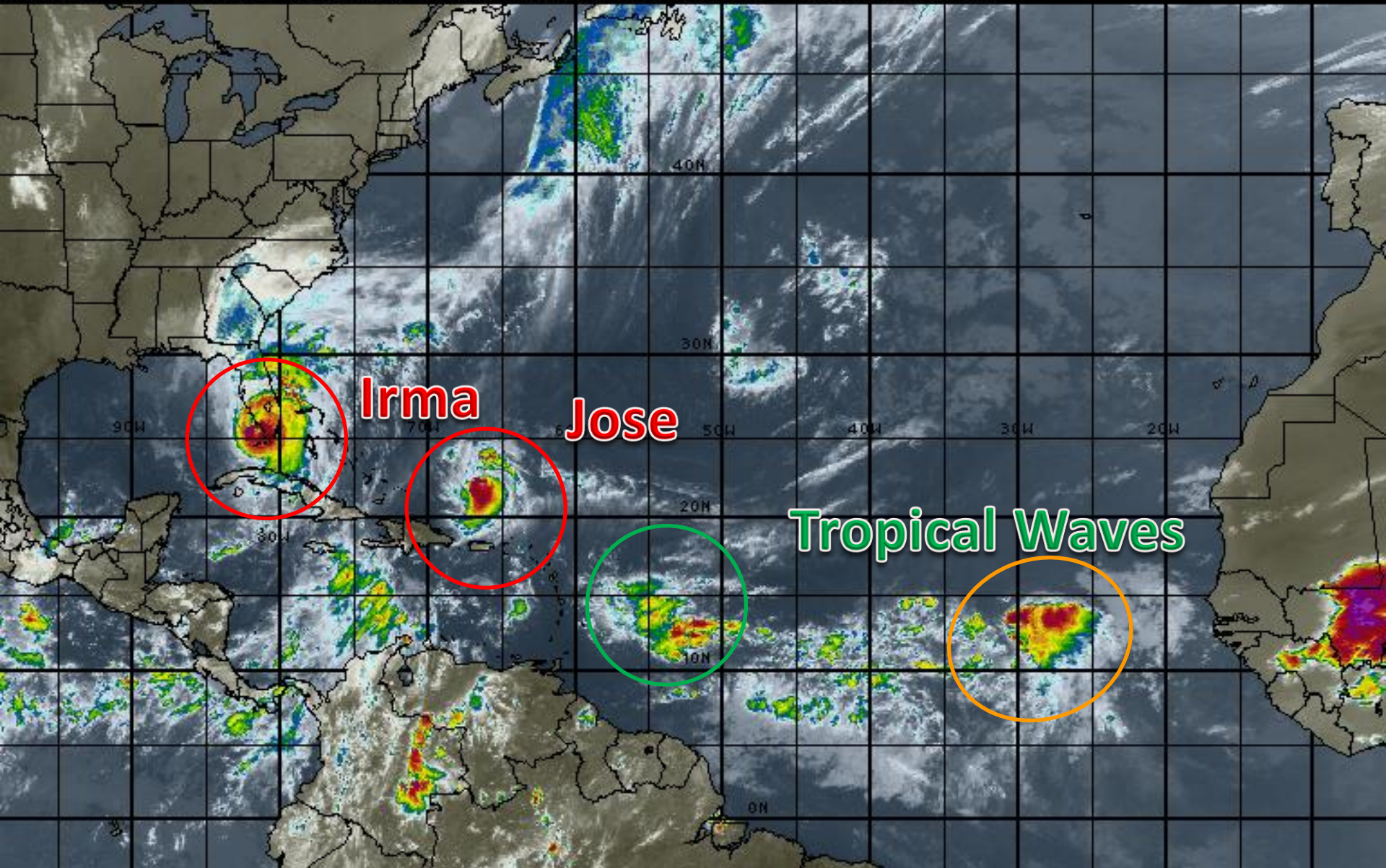
**Hurricane Irma, Hurricane Jose, Tropical Wave (60%)**

**This update is intended for government and emergency response officials, and is provided for informational and situational awareness purposes only. Forecast conditions are subject to change based on a variety of environmental factors. For additional information, or for any life safety concerns with an active weather event please contact your County Emergency Management or Public Safety Office, local National Weather Service forecast office or visit the National Hurricane Center website at [www.nhc.noaa.gov](http://www.nhc.noaa.gov).**



# Atlantic Basin Satellite Image

18:00 10-SEP-2017 GMT Copyright © 1998-2016 MSI Corporation <http://www.usi.com>





# Hurricane Irma

5 PM EDT Sun Sep 10 2017

Position 26.2 N 81.8 W

Maximum Winds 110 mph

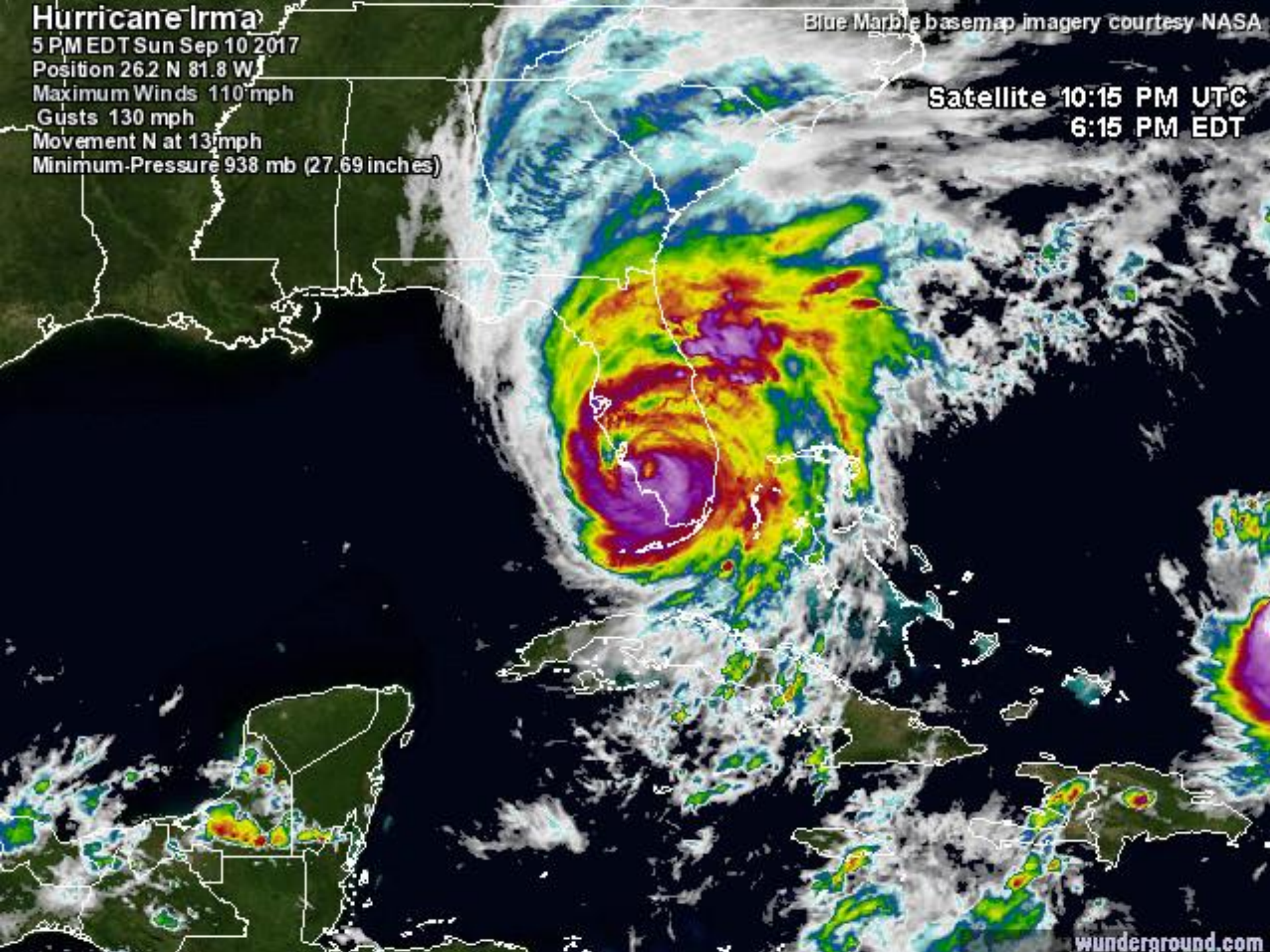
Gusts 130 mph

Movement N at 13 mph

Minimum Pressure 938 mb (27.69 inches)

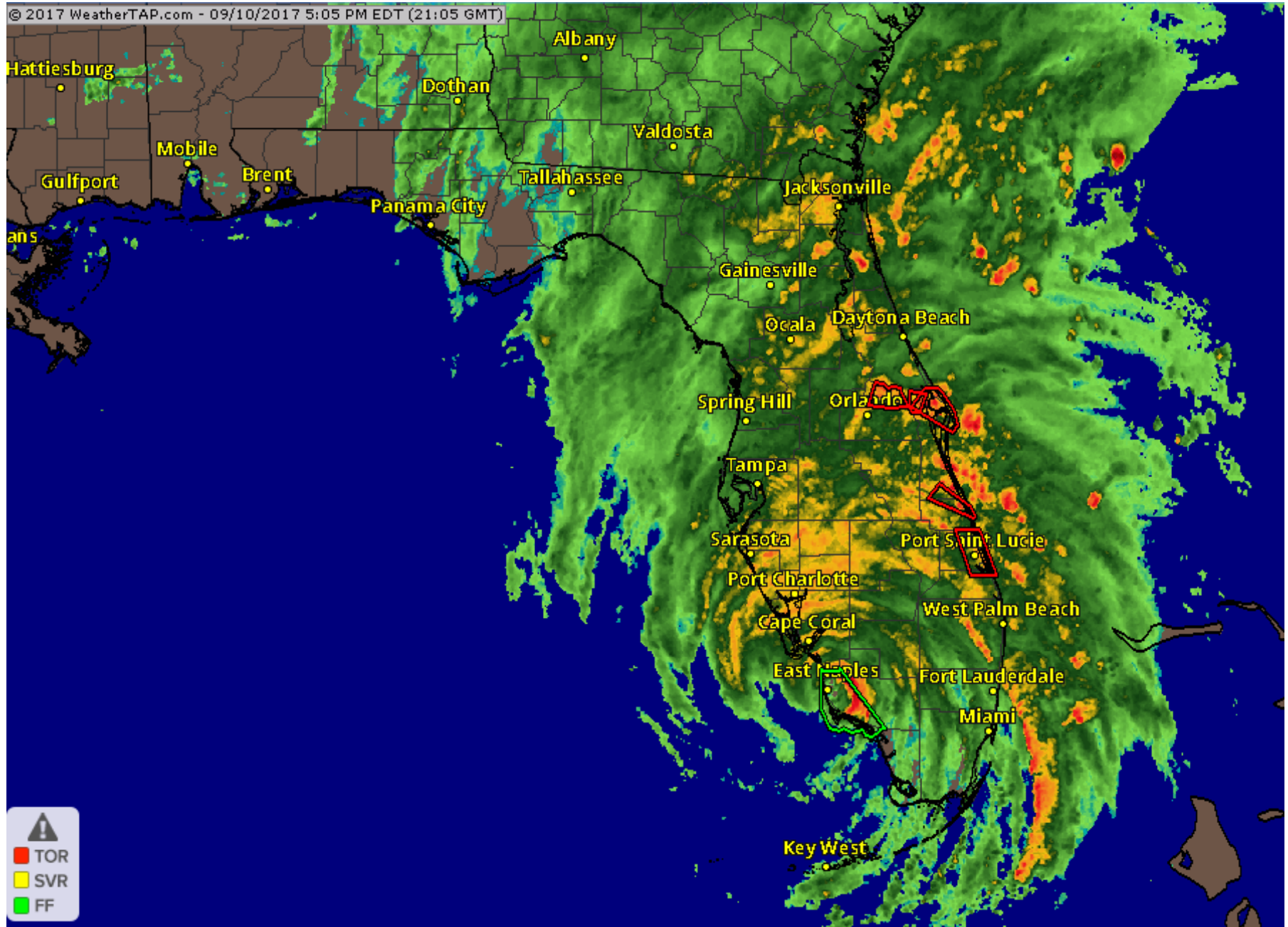
Blue Marble basemap imagery courtesy NASA

Satellite 10:15 PM UTC  
6:15 PM EDT



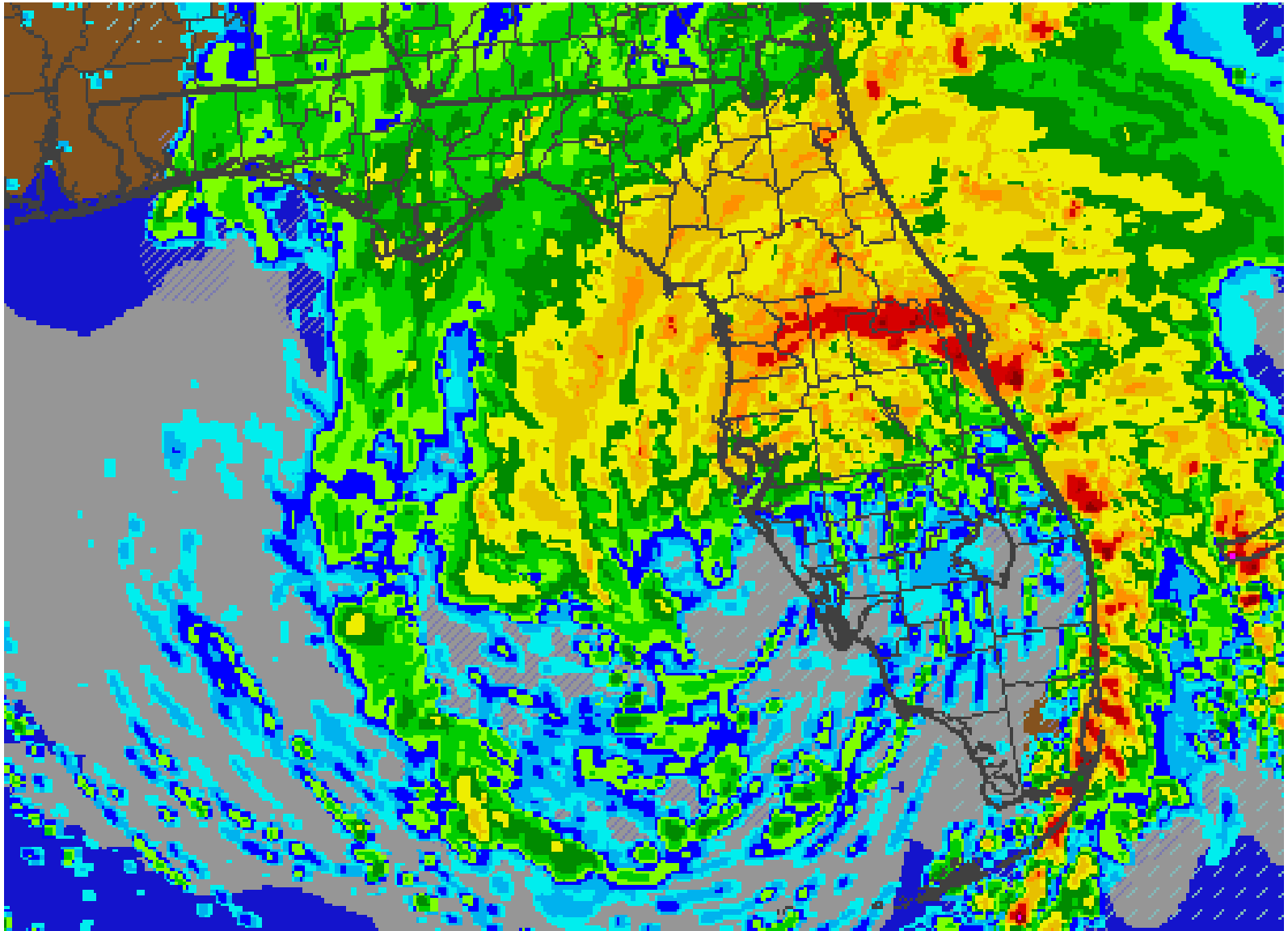


# State radar as of 05:05pm EDT Sunday



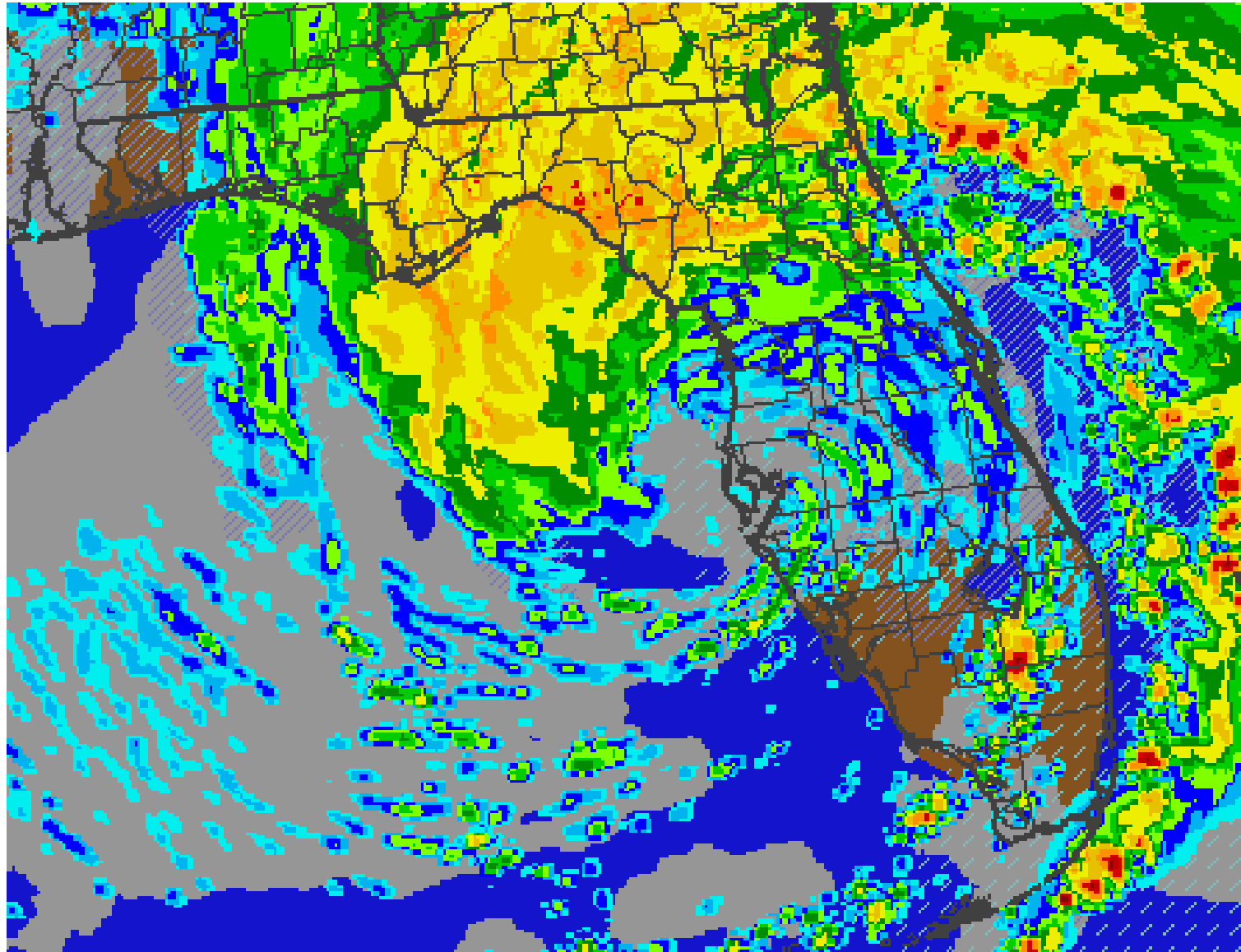


# Future Radar 12am Tonight





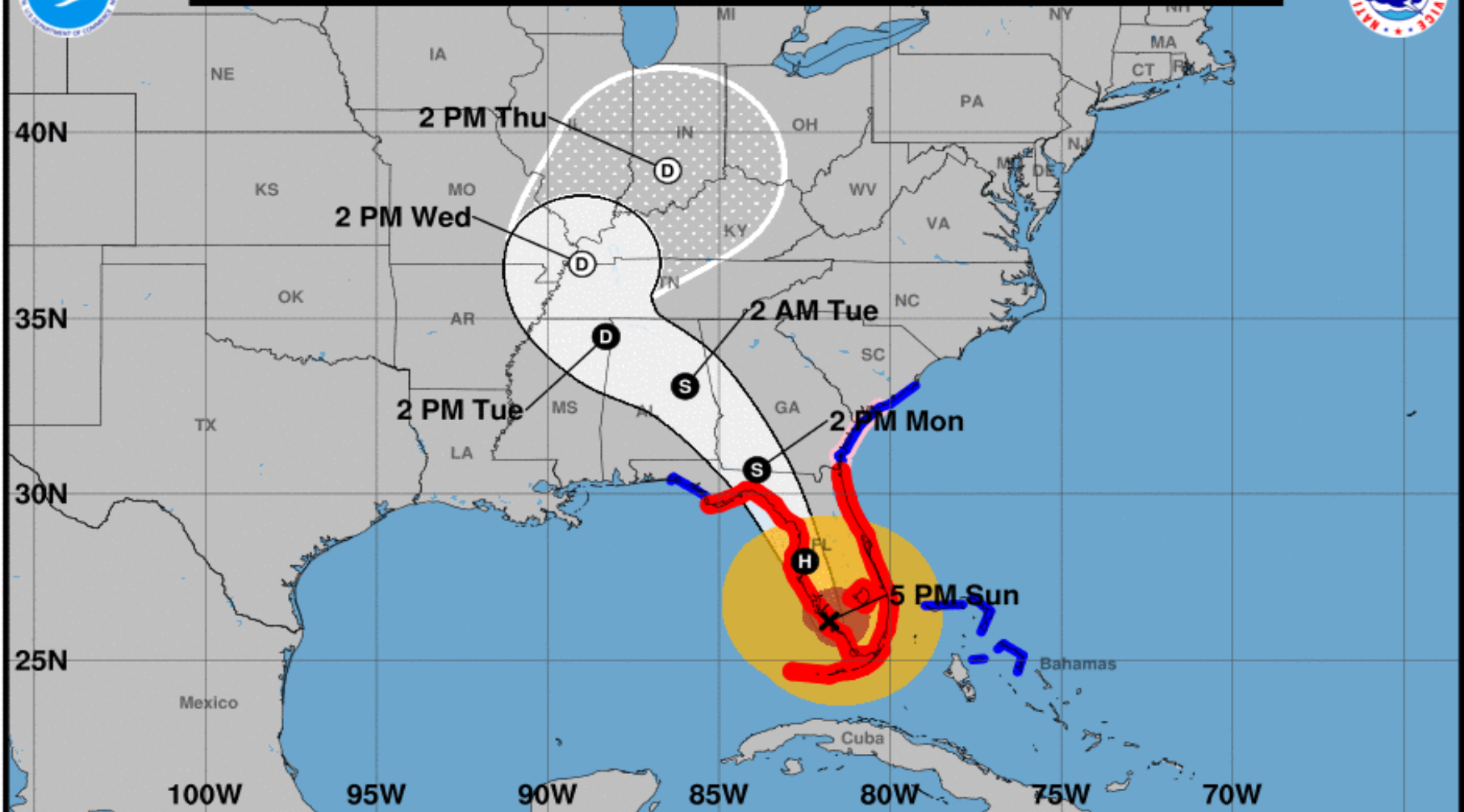
# Future Radar 6am Tomorrow







Note: The cone contains the probable path of the storm center but does not show the size of the storm. Hazardous conditions can occur outside of the cone.



## Hurricane Irma

Sunday September 10, 2017

5 PM EDT Advisory 47

NWS National Hurricane Center

## Current information: x

Center location 26.2 N 81.8 W

Maximum sustained wind 110 mph

Movement N at 14 mph

## Forecast positions:

● Tropical Cyclone ○ Post/Potential TC

Sustained winds: D < 39 mph

S 39-73 mph H 74-110 mph M > 110 mph

## Potential track area:

Day 1-3 Day 4-5

## Watches:

Hurricane Trop Stm

## Warnings:

Hurricane Trop Stm

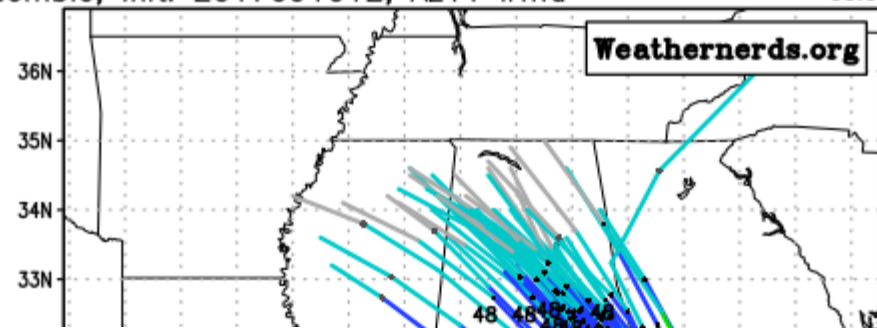
## Current wind extent:

Hurricane Trop Stm



ECMWF Ensemble, init: 2017091012, AL11 Irma

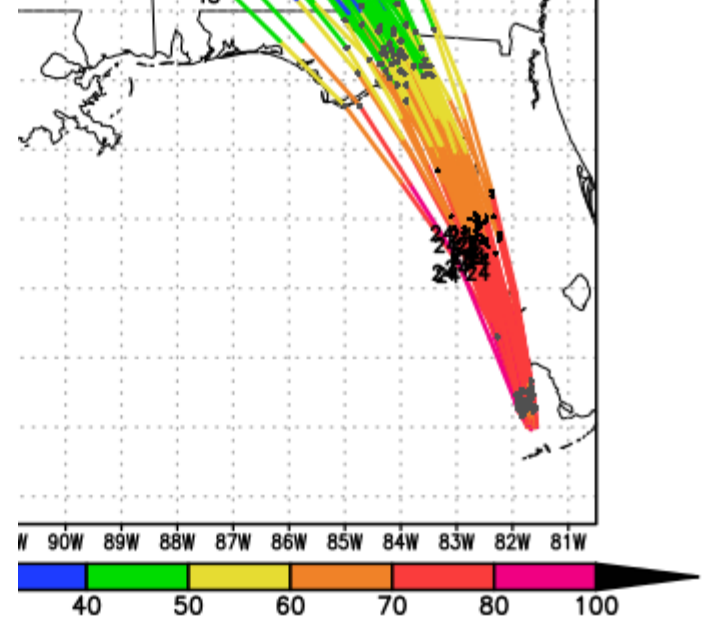
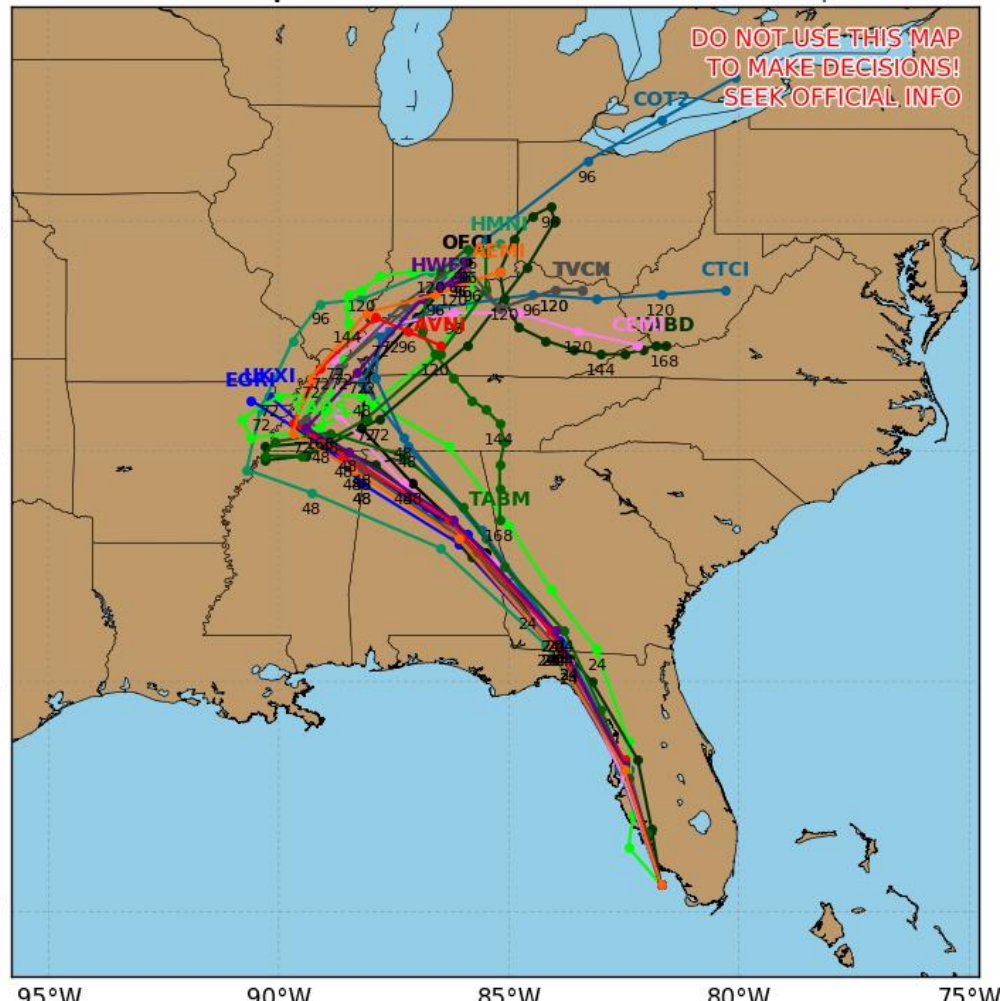
color = max wind (kt)



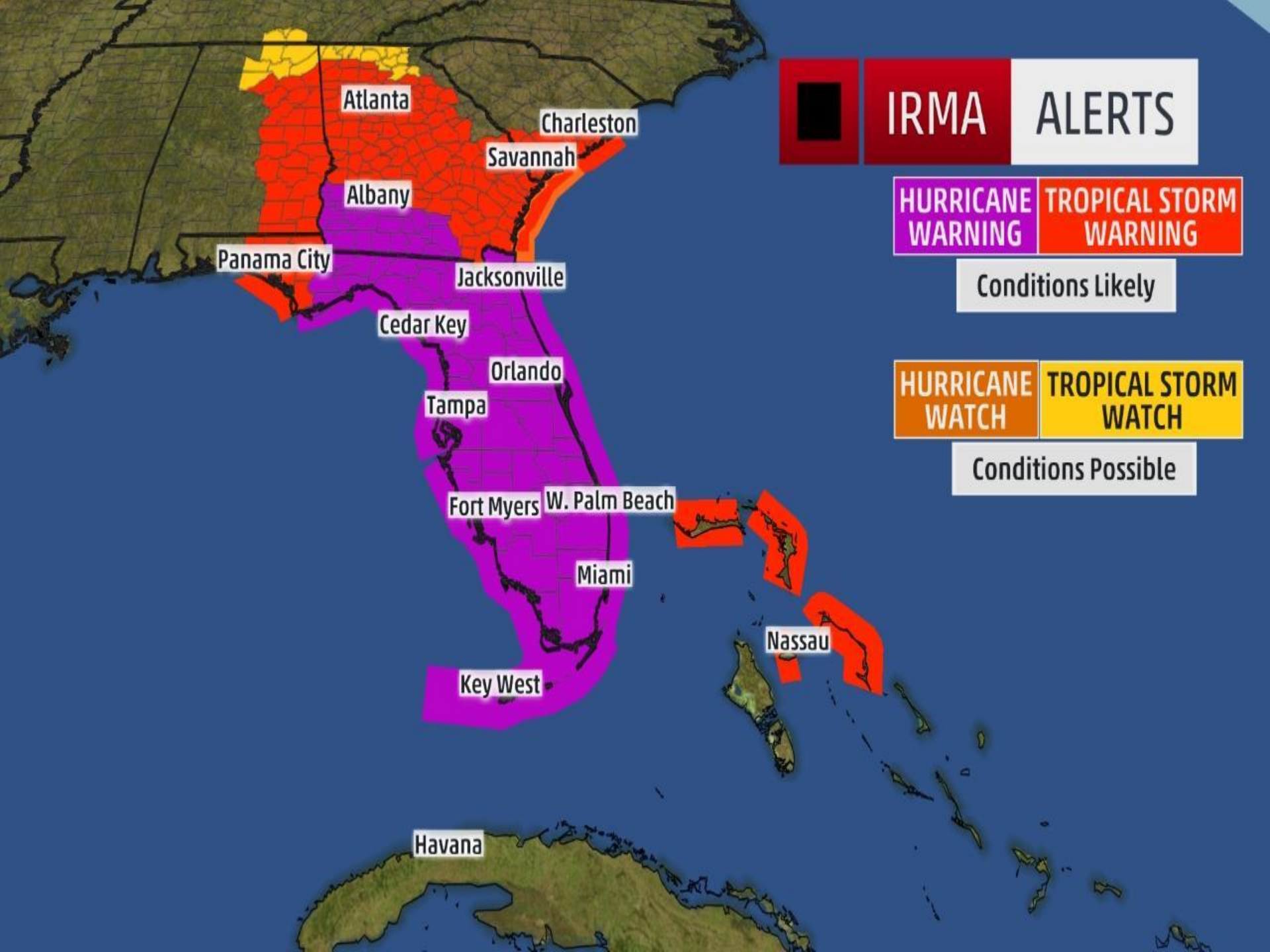
## Hurricane IRMA Model Track Guidance

Initialized at 18z Sep 10 2017

Levi Cowan - tropicaltidbits.com







# IRMA ALERTS

**HURRICANE WARNING** **TROPICAL STORM WARNING**

Conditions Likely

**HURRICANE WATCH** **TROPICAL STORM WATCH**

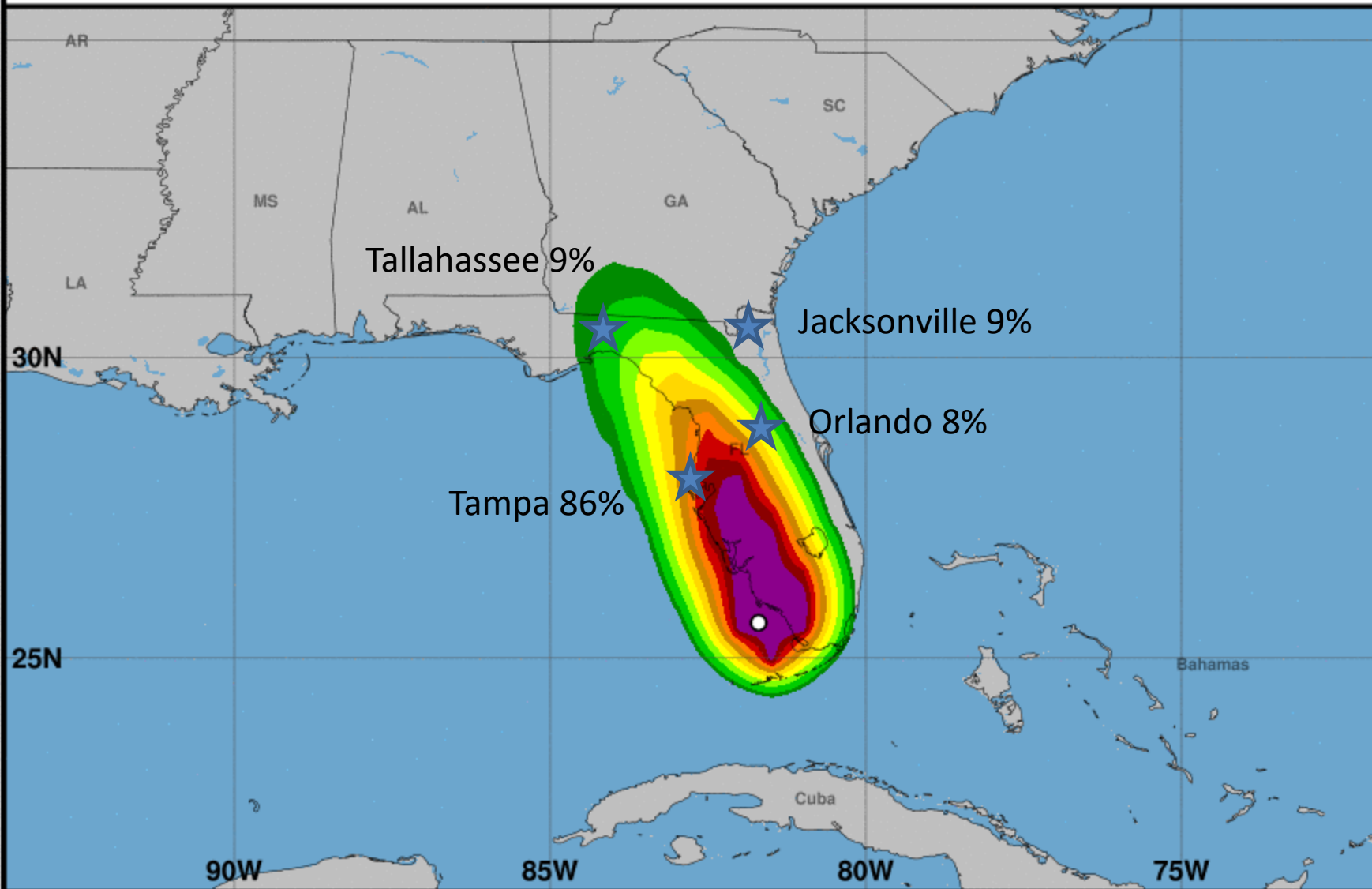
Conditions Possible





# Hurricane-Force Wind Speed Probabilities (Preliminary)

For the 120 hours (5.0 days) from 2 PM EDT SUN SEP 10 to 2 PM EDT FRI SEP 15

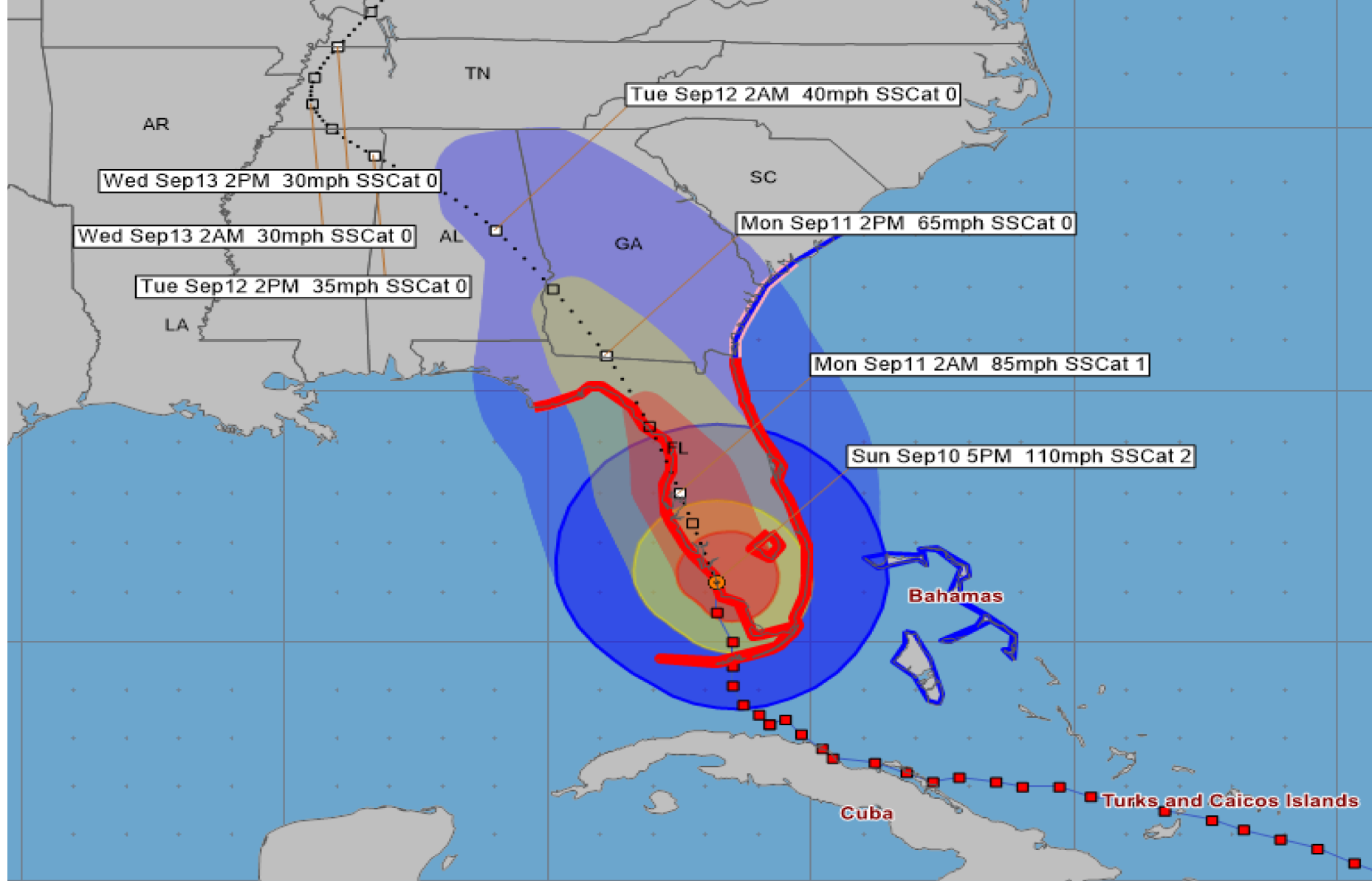


Probability of hurricane-force winds (1-minute average  $\geq 74$  mph) from all tropical cyclones

○ indicates Hurricane Irma center location at 2 PM EDT SUN SEP 10, 2017 (Forecast/Advisory #47)







### Hurricane Irma - Sunday, September 10, 2017 5 PM EDT Advisory #47

Center Location: 26.2 N 81.8 W Maximum Sustained Winds: 110 mph (Cat 2) Movement: 14 mph N

forecast positions

Surface Wind Field: at current location

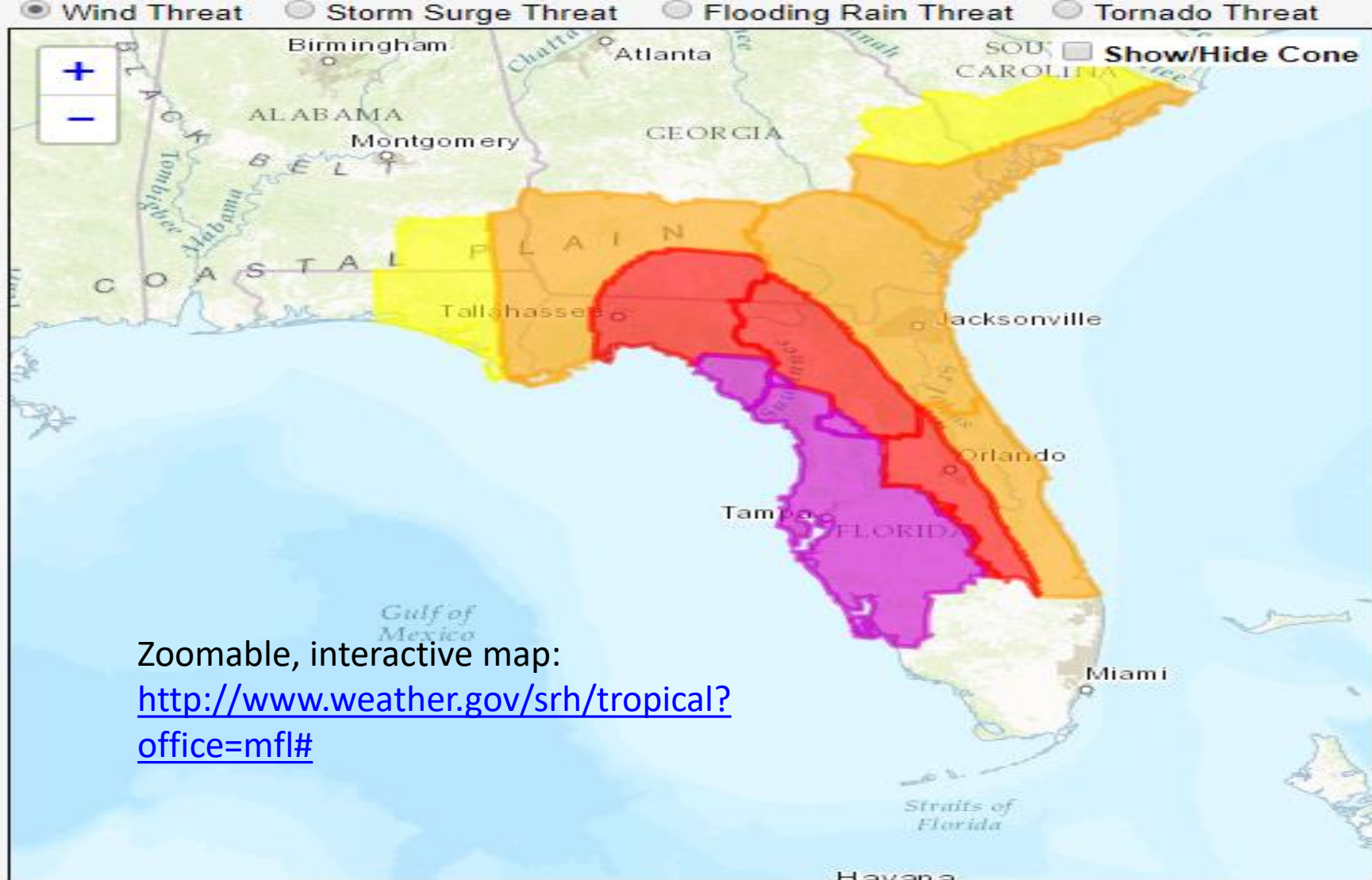
along 3-day forecast track

Watches: hurricane tropical storm

Warnings: hurricane tropical storm

Sustained Wind Speeds: tropical storm  $\geq 34\text{kt}/39\text{mph}$  strong tropical storm  $\geq 50\text{kt}/58\text{mph}$  hurricane  $\geq 64\text{kt}/74\text{mph}$





[Download KML]

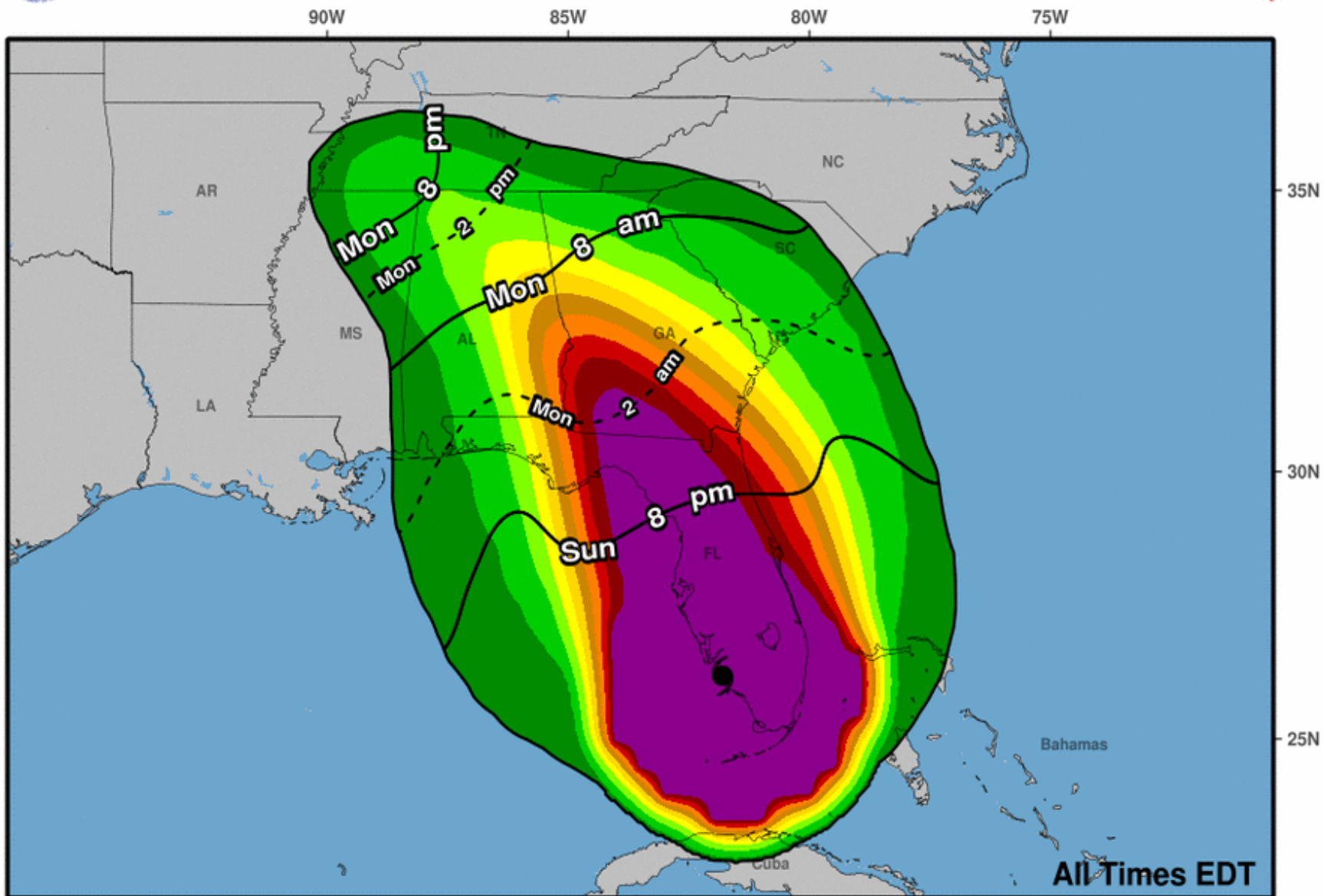
[Download Image]

Wind Threat
Extreme - Potential for wind > 110 mph
High - Potential for wind 74 to 110 mph
Moderate - Potential for wind 58 to 73 mph
Elevated - Potential for wind 39 to 57 mph
Little to None - Wind < 39 mph





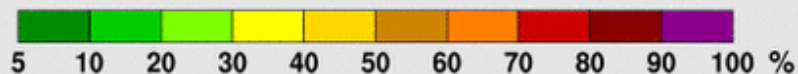
# Earliest Reasonable Arrival Time of Tropical-Storm-Force Winds



**Hurricane Irma**  
**Sun. Sep. 10, 2017 5 pm EDT**  
**Advisory 47**

Storm Location &  
Wind Speed (knots)  
○ <34    ◐ 34-63    ● ≥64

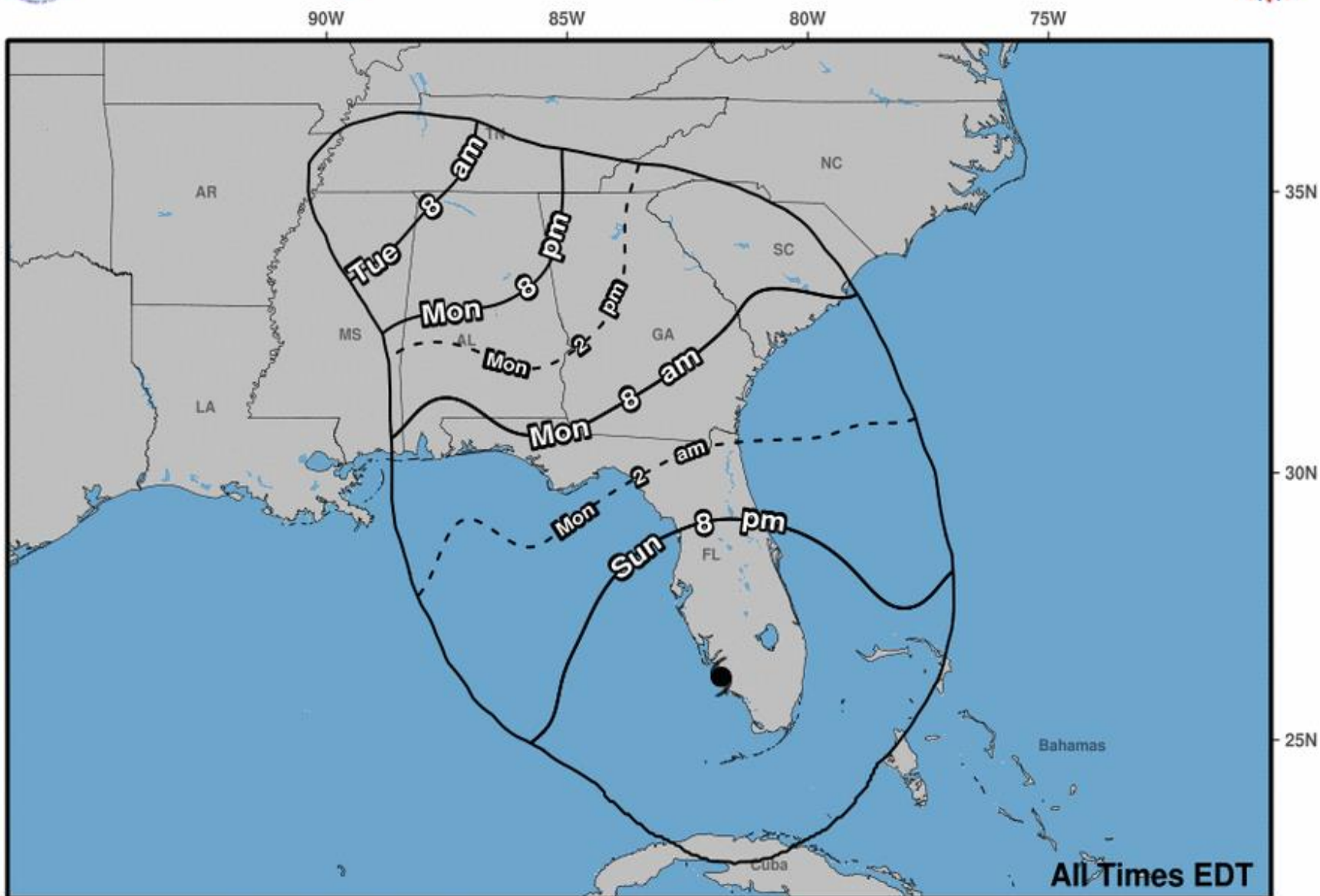
Five-day chance of receiving sustained 34+ knot (39+ mph) winds







# Most Likely Arrival Time of Tropical-Storm-Force Winds



Hurricane Irma  
Sun. Sep. 10, 2017 5 pm EDT  
Advisory 47

Storm Location &  
Wind Speed (knots)  
○ <34    ◐ 34-63    ● ≥64



This information is quite specific and is subject to large forecast errors. You should NOT use these wind forecasts until just before landfall, and then only as a general indication of the expected wind patterns.

[illegible]



Based on Advisory 47 Issued 9/10/2017 5 PM EDT

### Wind Timing and Intensity Chart for Local Areas

### Meaning Of Report

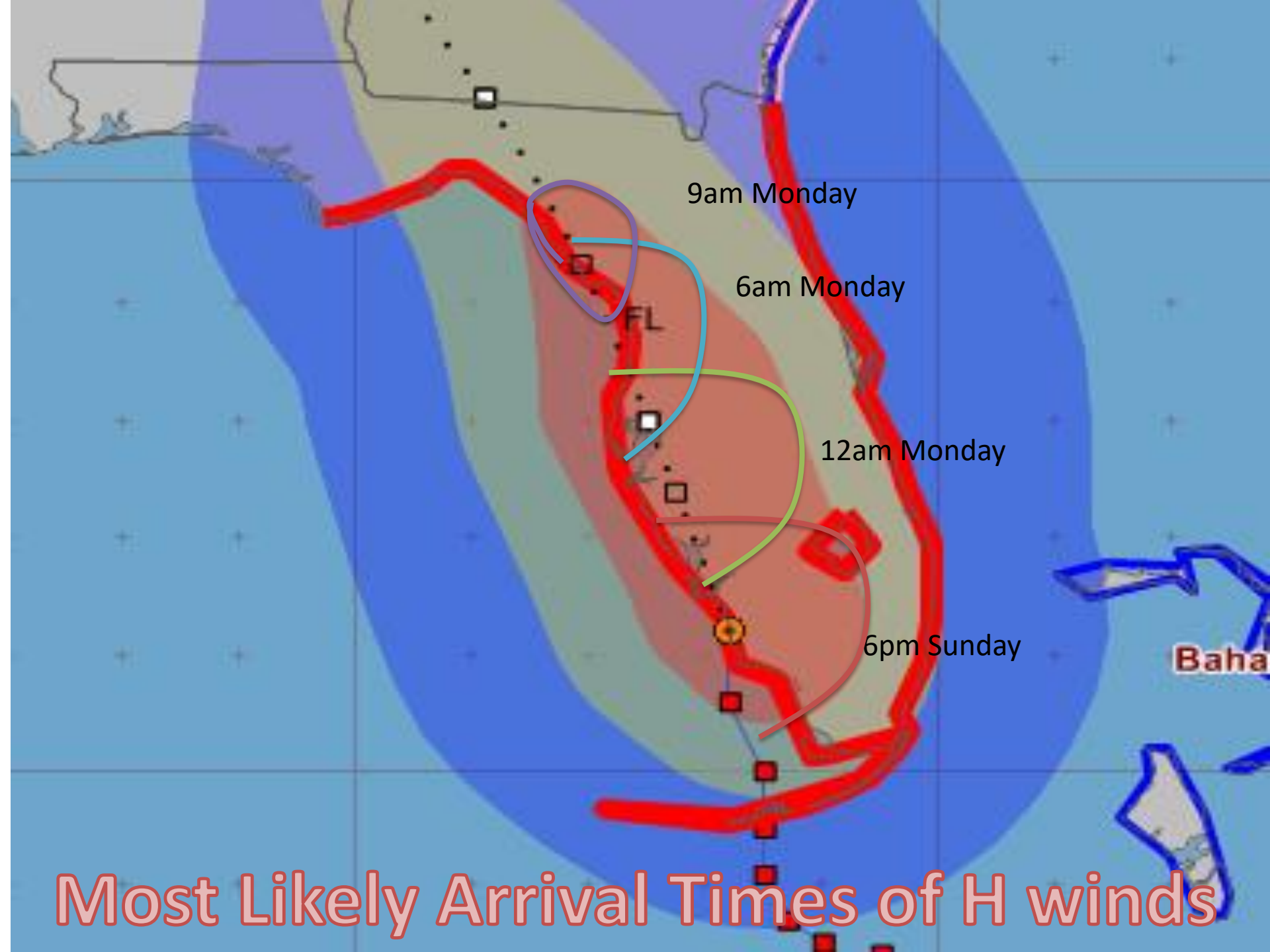
This chart represents wind arrival and departure details for select locations that are currently forecast to have tropical storm or greater winds during the next 72 hours.

### Cautionary Note:

This information is quite specific and is subject to large forecast errors. You should NOT use these wind forecasts until just before landfall, and then only as a general indication of the expected wind patterns.

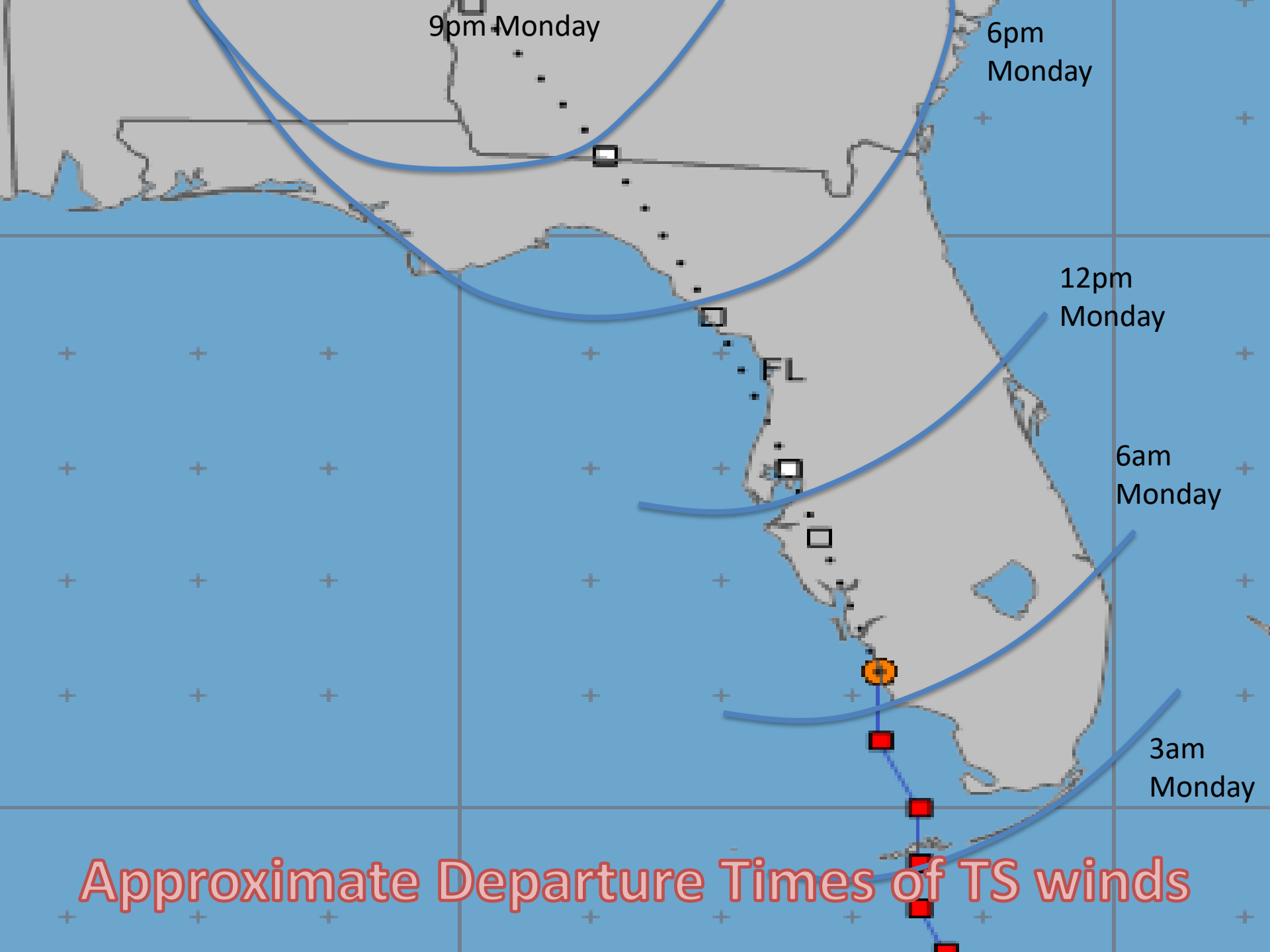
[illegible]





Most Likely Arrival Times of H winds









## Storm Surge Warning

Zoomable maps available here:

[http://www.nhc.noaa.gov/refresh/graphics\\_at1+shtml/154730.shtml?wsurge#contents](http://www.nhc.noaa.gov/refresh/graphics_at1+shtml/154730.shtml?wsurge#contents)

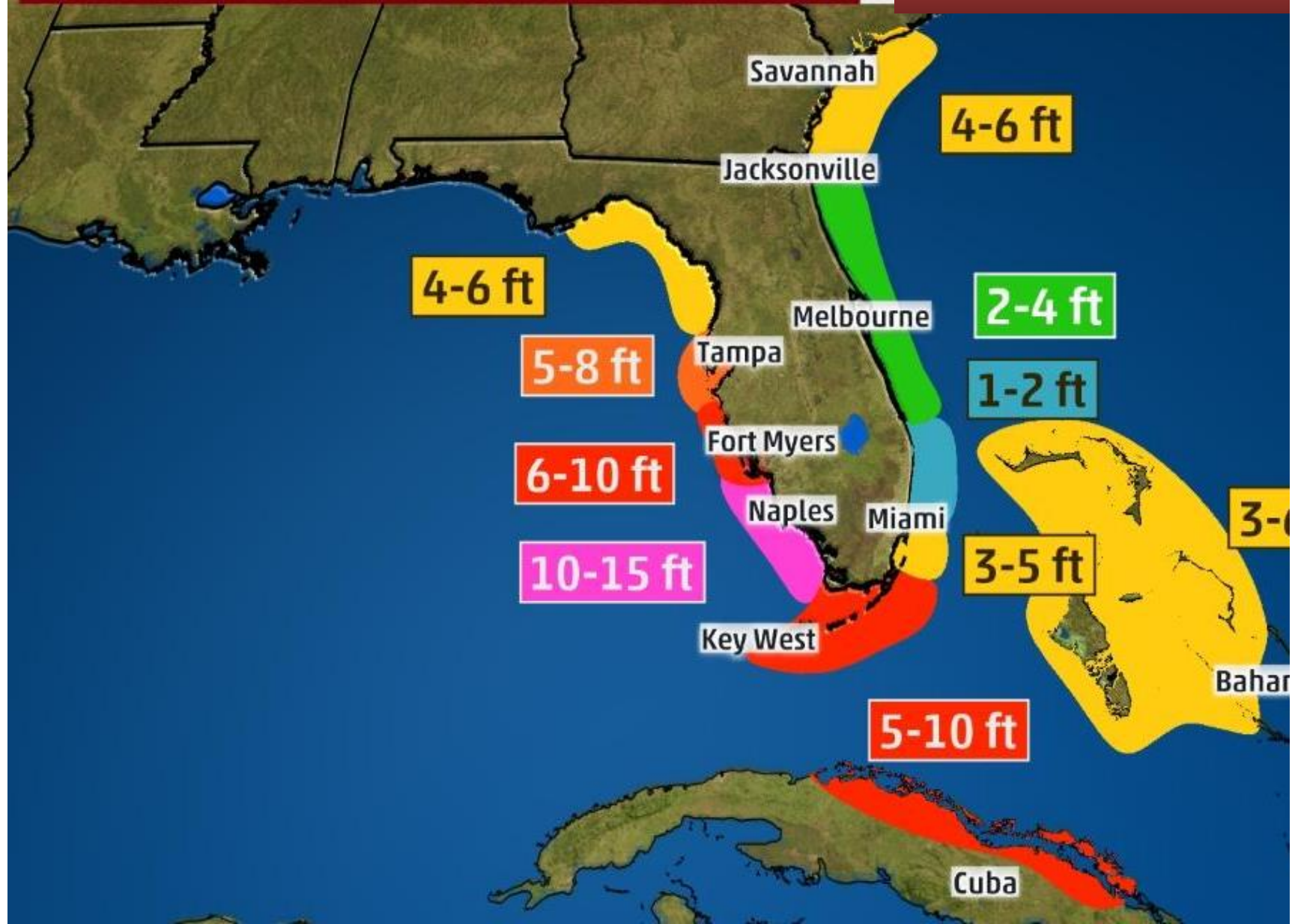
Probabilistic Storm Surge

<http://slosh.nws.noaa.gov/psurge2.0/index.php?S=Irma2017&Adv=34&Ty=e10&Z=z4&D=agl&Ti=cum&Msg=17&Help=about>

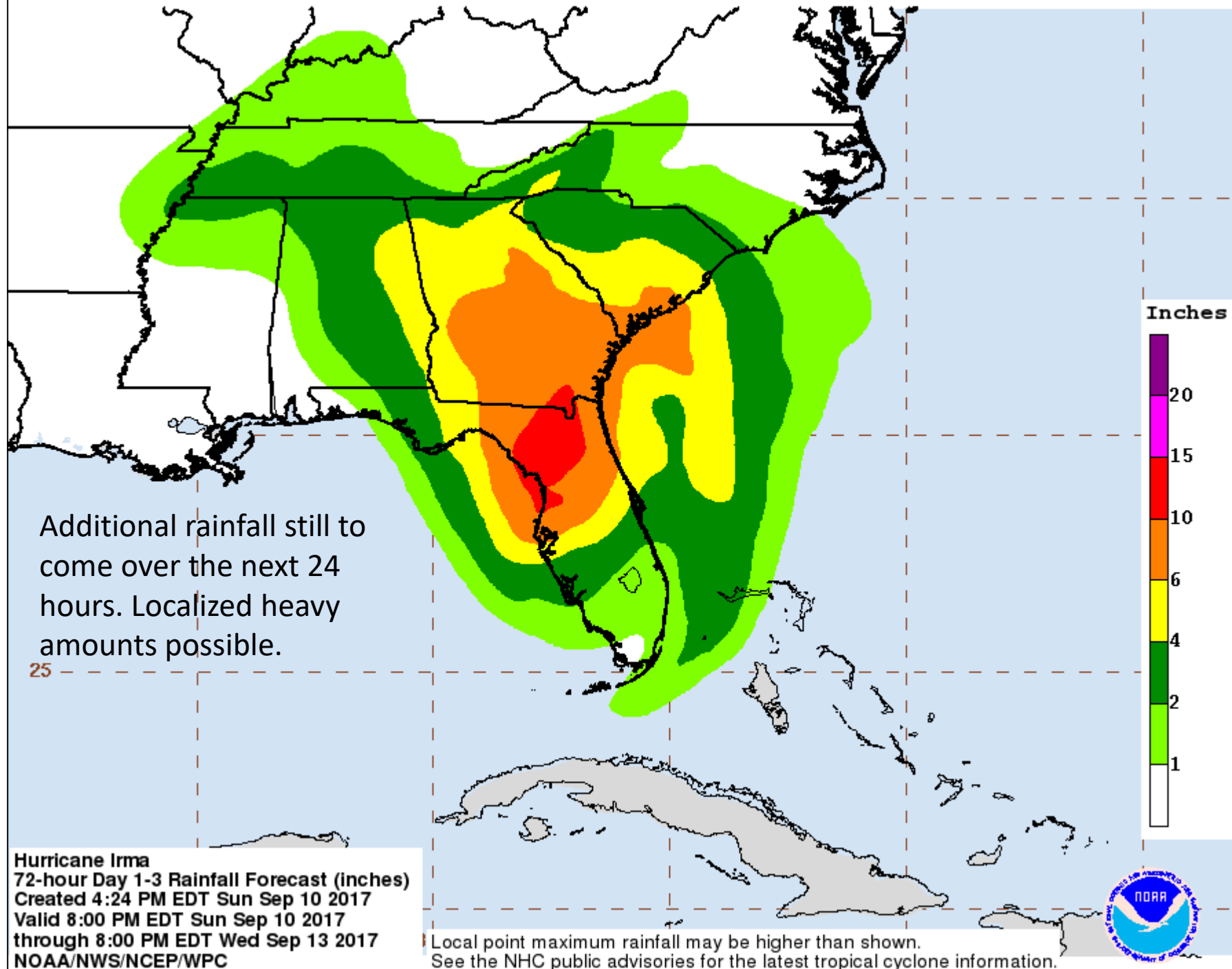


# STORM SURGE INUNDATION

Above Normally  
Dry Ground





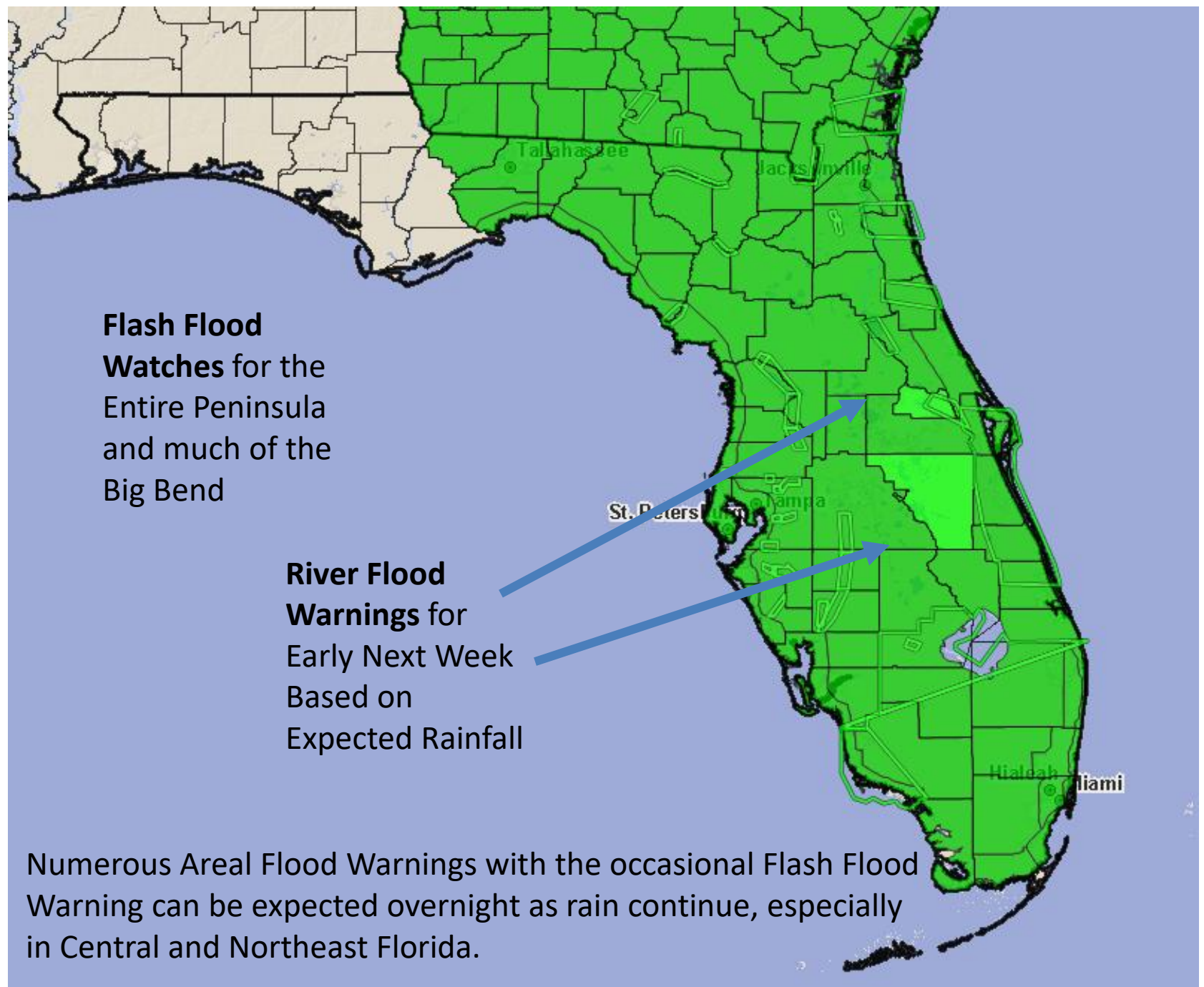




**Flash Flood  
Watches** for the  
Entire Peninsula  
and much of the  
Big Bend

**River Flood  
Warnings** for  
Early Next Week  
Based on  
Expected Rainfall

Numerous Areal Flood Warnings with the occasional Flash Flood Warning can be expected overnight as rain continue, especially in Central and Northeast Florida.





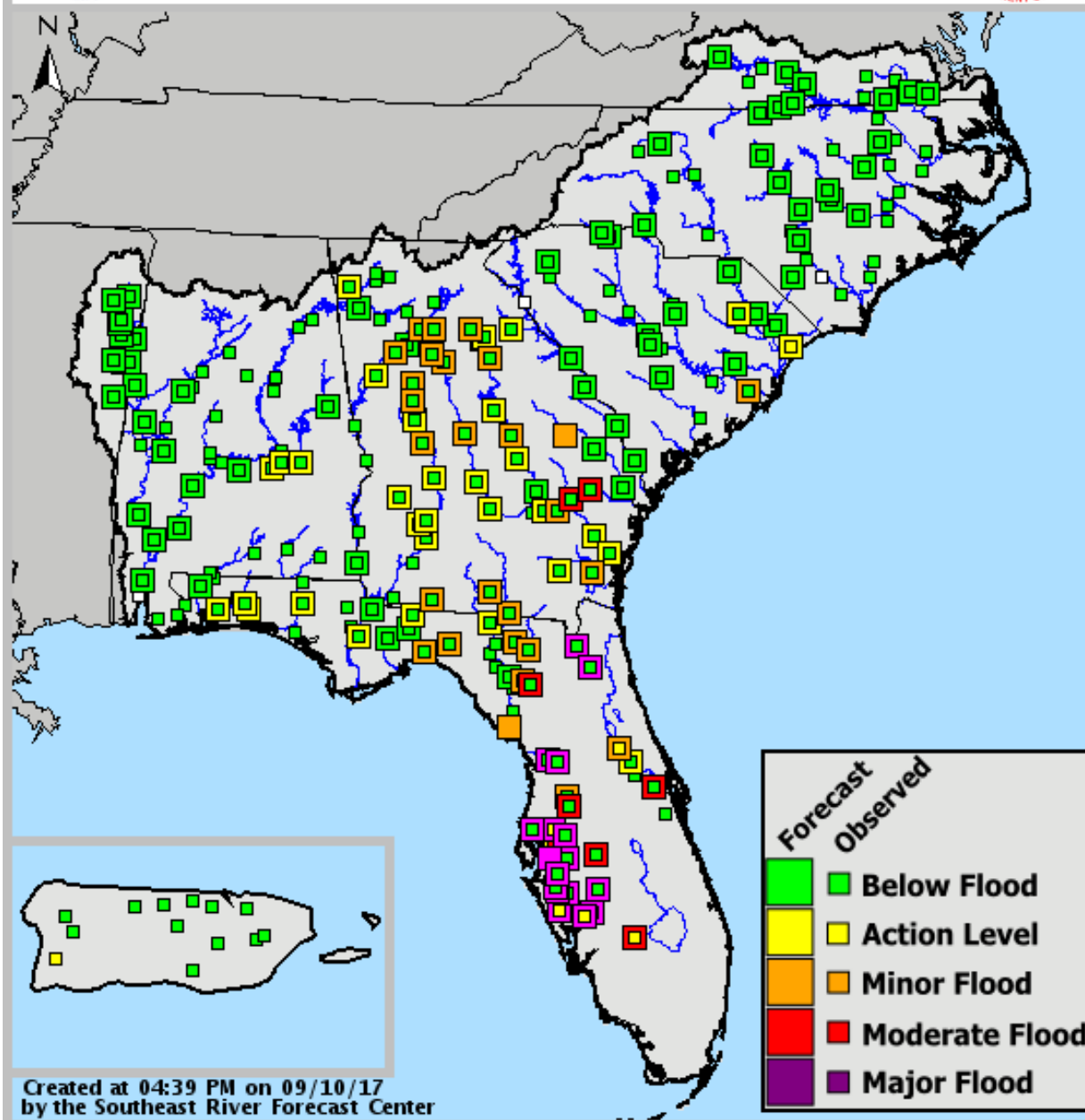


# SERFC River Conditions

Valid: 09/10/2017 @ 04:39 PM

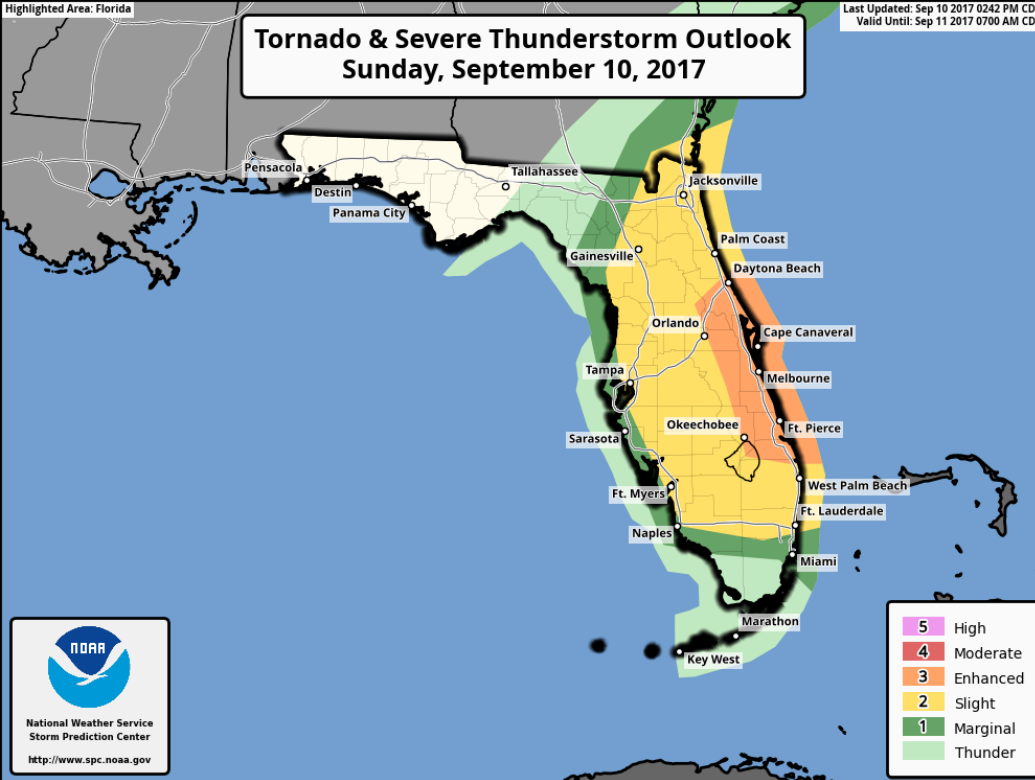


Extensive  
river  
flooding  
expected  
across  
much of  
the Florida  
Peninsula



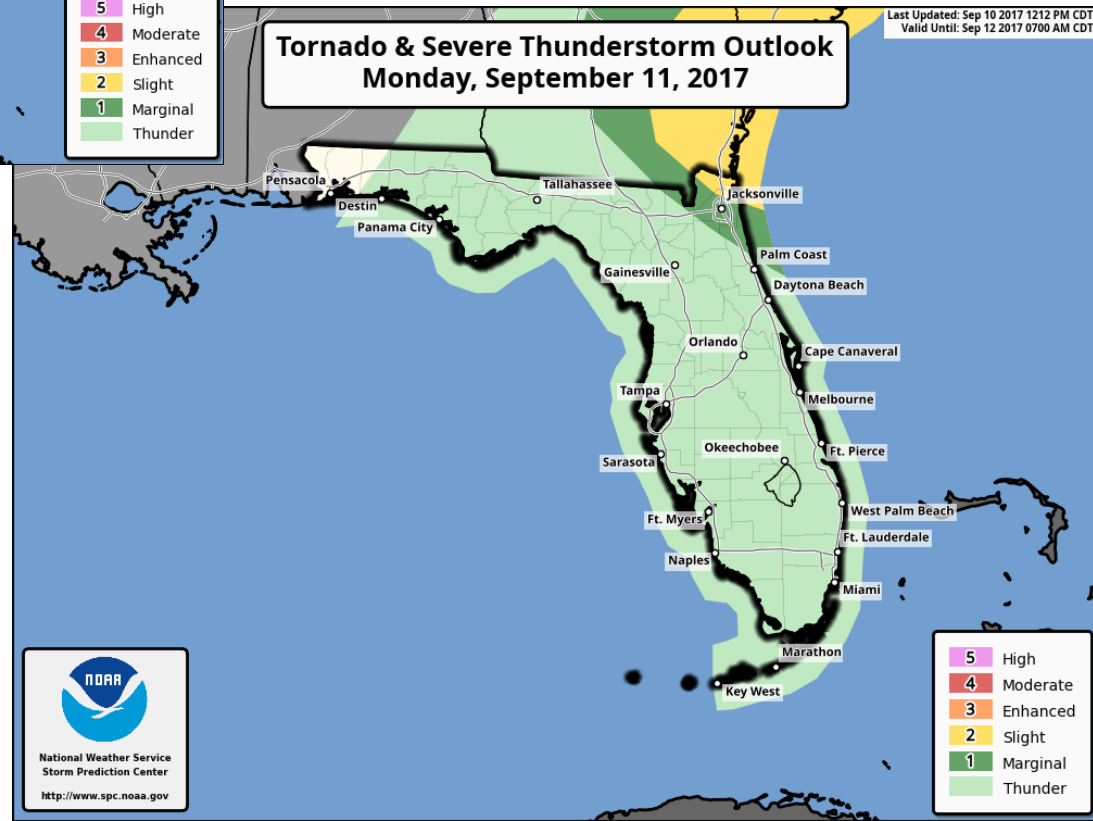


## Tornado & Severe Thunderstorm Outlook Sunday, September 10, 2017



Tornado threat will continue this evening for Central Florida, and increase in Northeast Florida tomorrow. Additional tornado watches are expected for Central and Northeast Florida.

## Tornado & Severe Thunderstorm Outlook Monday, September 11, 2017



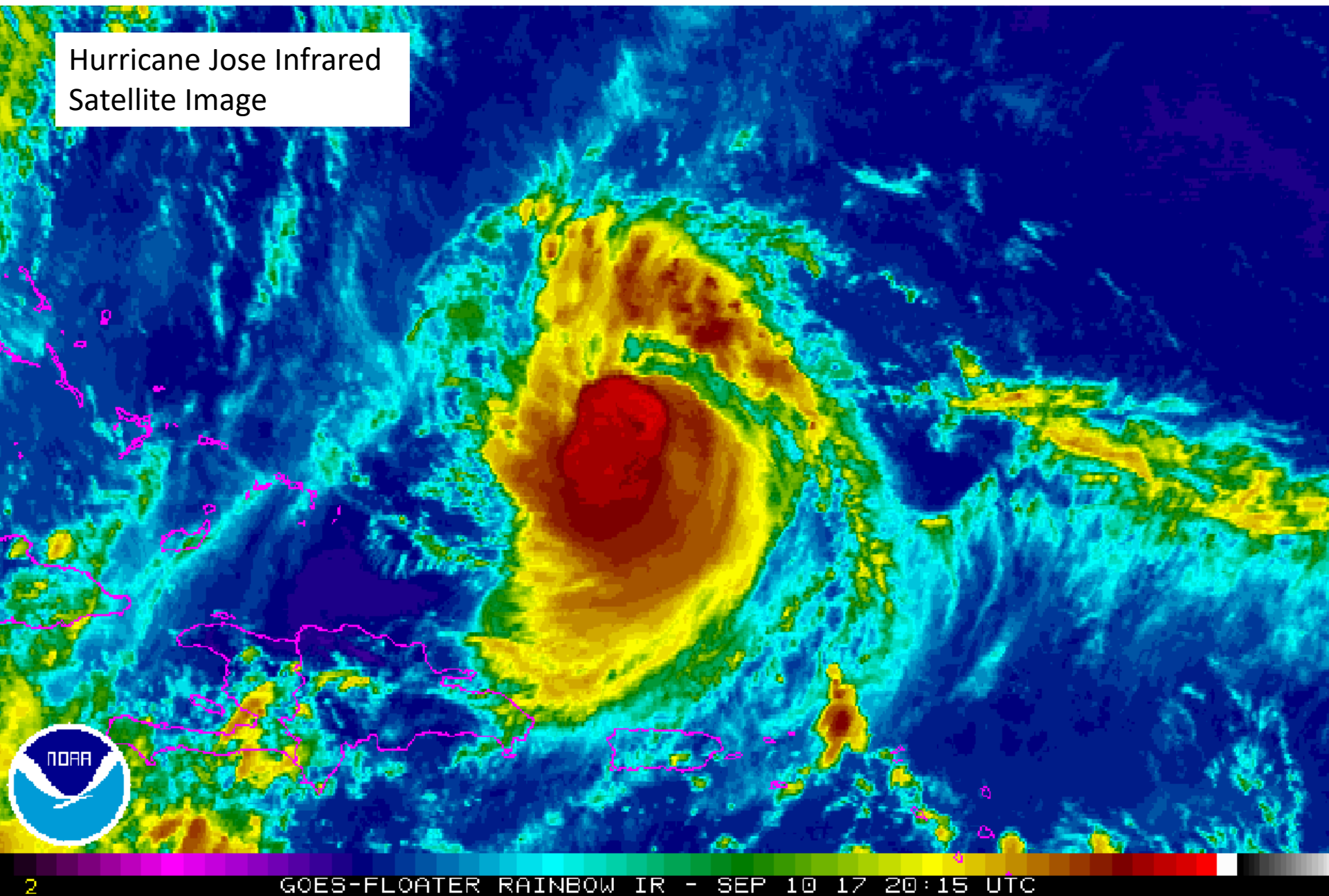




**Tornado Watch # 483 - Valid from 1200 PM until 1200 AM EDT**



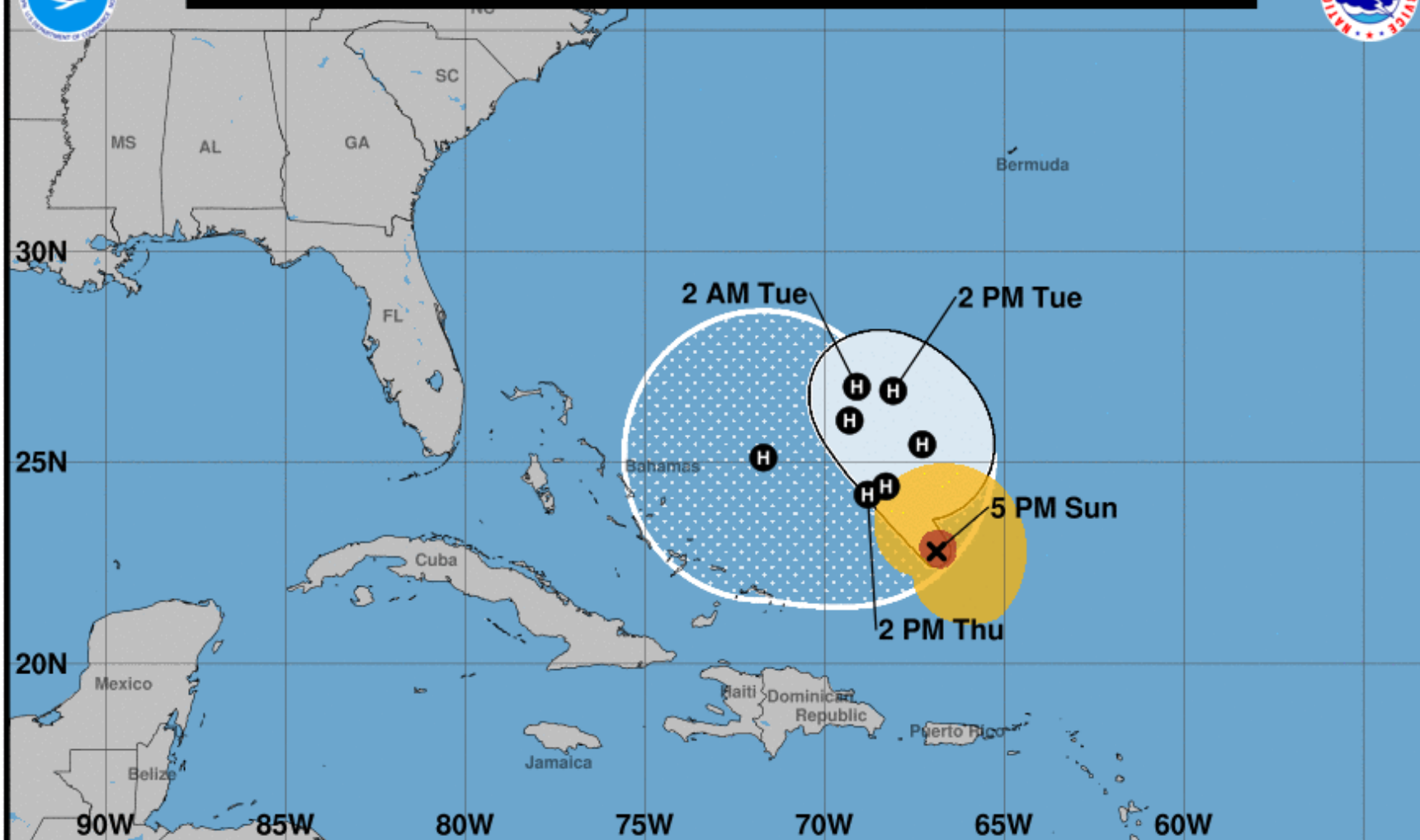
Hurricane Jose Infrared  
Satellite Image







Note: The cone contains the probable path of the storm center but does not show the size of the storm. Hazardous conditions can occur outside of the cone.



### Hurricane Jose

Sunday September 10, 2017

5 PM AST Advisory 22

NWS National Hurricane Center

### Current information: x

Center location 22.8 N 66.9 W

Maximum sustained wind 120 mph

Movement NW at 16 mph

### Forecast positions:

● Tropical Cyclone ○ Post/Potential TC

Sustained winds: D < 39 mph

S 39-73 mph H 74-110 mph M > 110 mph

### Potential track area:

Day 1-3 Day 4-5

### Watches:

Hurricane Trop Stm

### Warnings:

Hurricane Trop Stm

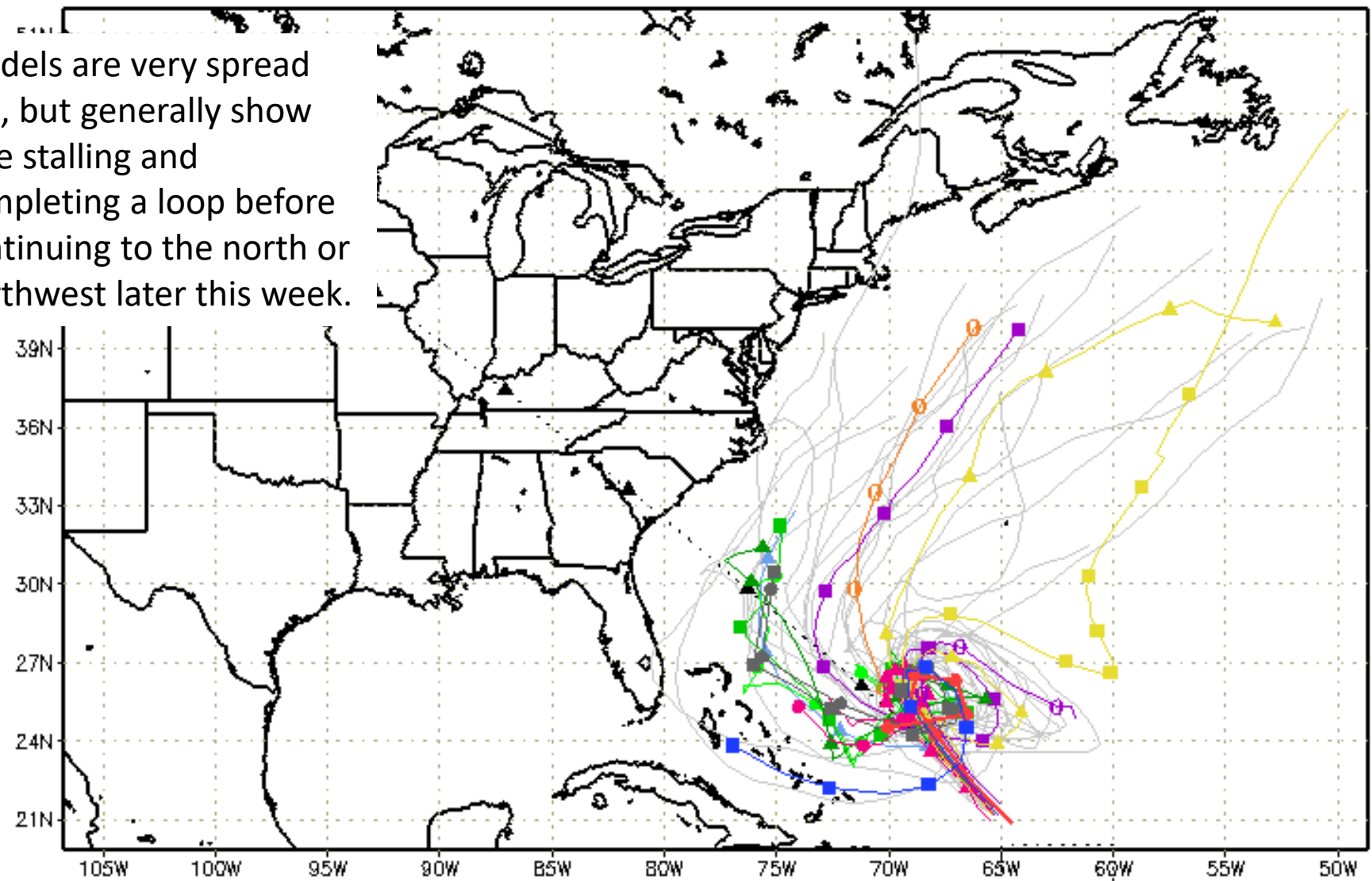
### Current wind extent:

Hurricane Trop Stm



--▲-- XTRP 10/1800Z    ▲ TABD 10/1800Z    ▲ HMON 10/1200Z    ▲ AVNO 10/1200Z    ▲ GCM 10/1200Z  
 --■-- TVCN 10/1800Z    ■ TABM 10/1800Z    ■ GFDN Not Avail    ■ AEMN 10/1200Z    ■ GEMN 10/1200Z  
 --●-- TVCX 10/1800Z    ● TABS 10/1800Z    ● HWRF 10/1200Z    ● APxx 10/1200Z    ● UKM 10/1200Z  
 --○-- NHC 10/0900Z    ○ NVGM Not Avail    ○ COTC Not Avail    ○ NAM 10/1200Z    ○ CLP5 10/1800Z

Models are very spread  
 out, but generally show  
 Jose stalling and  
 completing a loop before  
 continuing to the north or  
 northwest later this week.



storm\_12  
 sfwmd.gov  
 weather@sfwmd.gov  
 10-Sep 16:36EDT

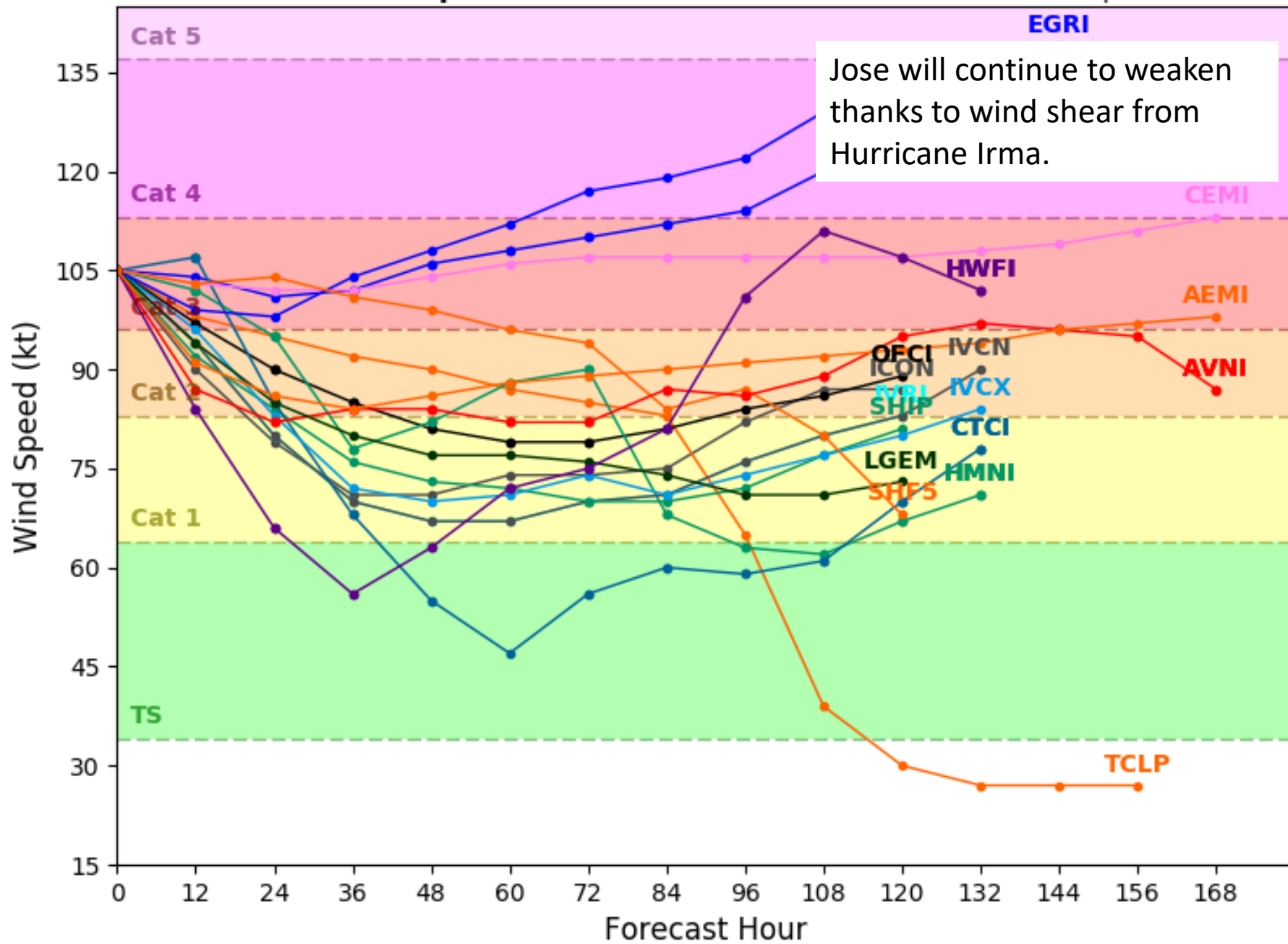
NHC Advisories and County Emergency Management Statements supersede this product.  
 This graphic should complement, not replace, NHC discussions.  
 If anything on this graphic causes confusion, ignore the entire product.  
 For full info, see <http://my.sfwmd.gov/sfwmd/common/images/weather/plots.html>





**Initialized at 18z Sep 10 2017**

Levi Cowan - [tropicaltidbits.com](http://tropicaltidbits.com)







# Five-Day Graphical Tropical Weather Outlook

National Hurricane Center Miami, Florida

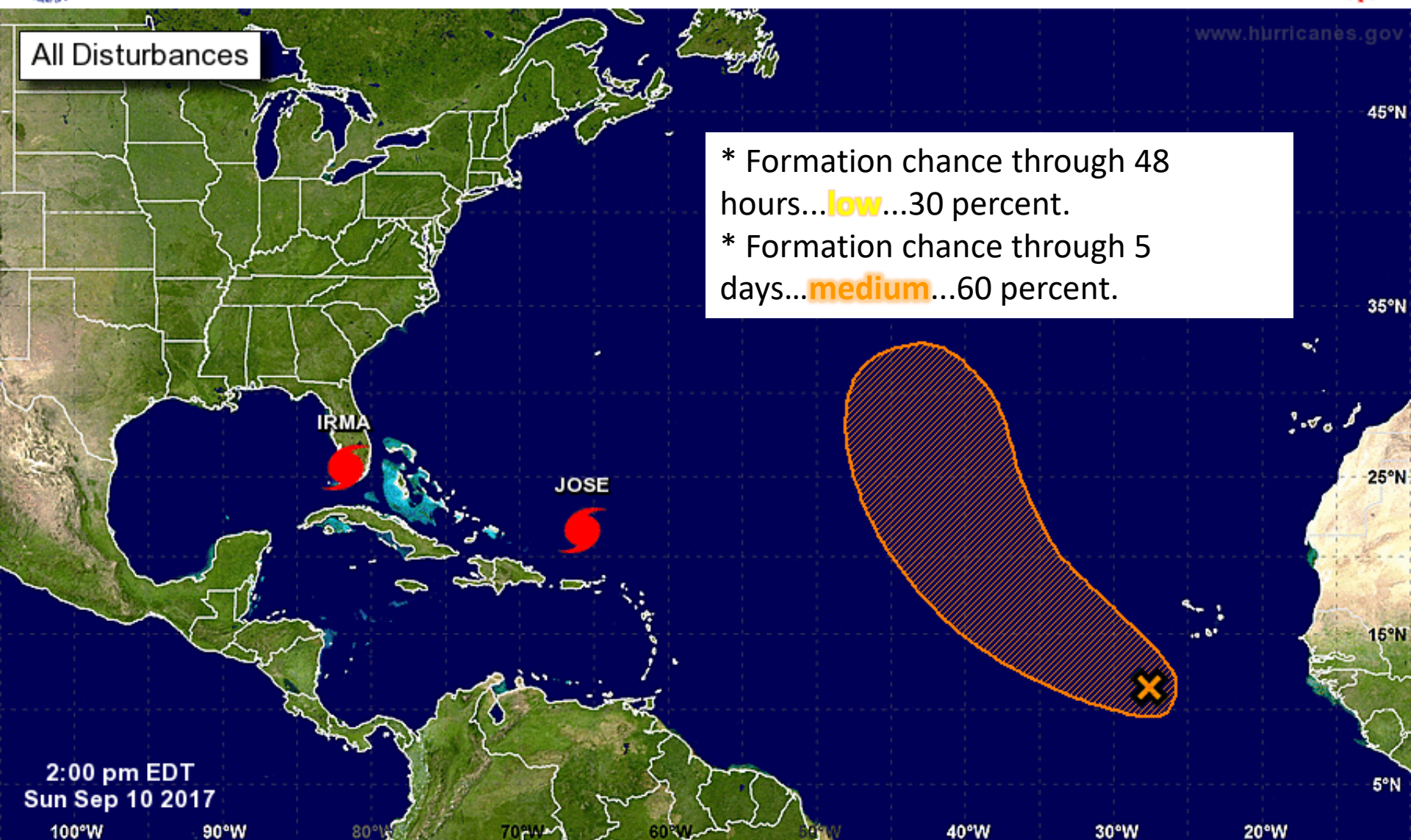


www.hurricanes.gov

All Disturbances

\* Formation chance through 48 hours...**low**...30 percent.

\* Formation chance through 5 days...**medium**...60 percent.



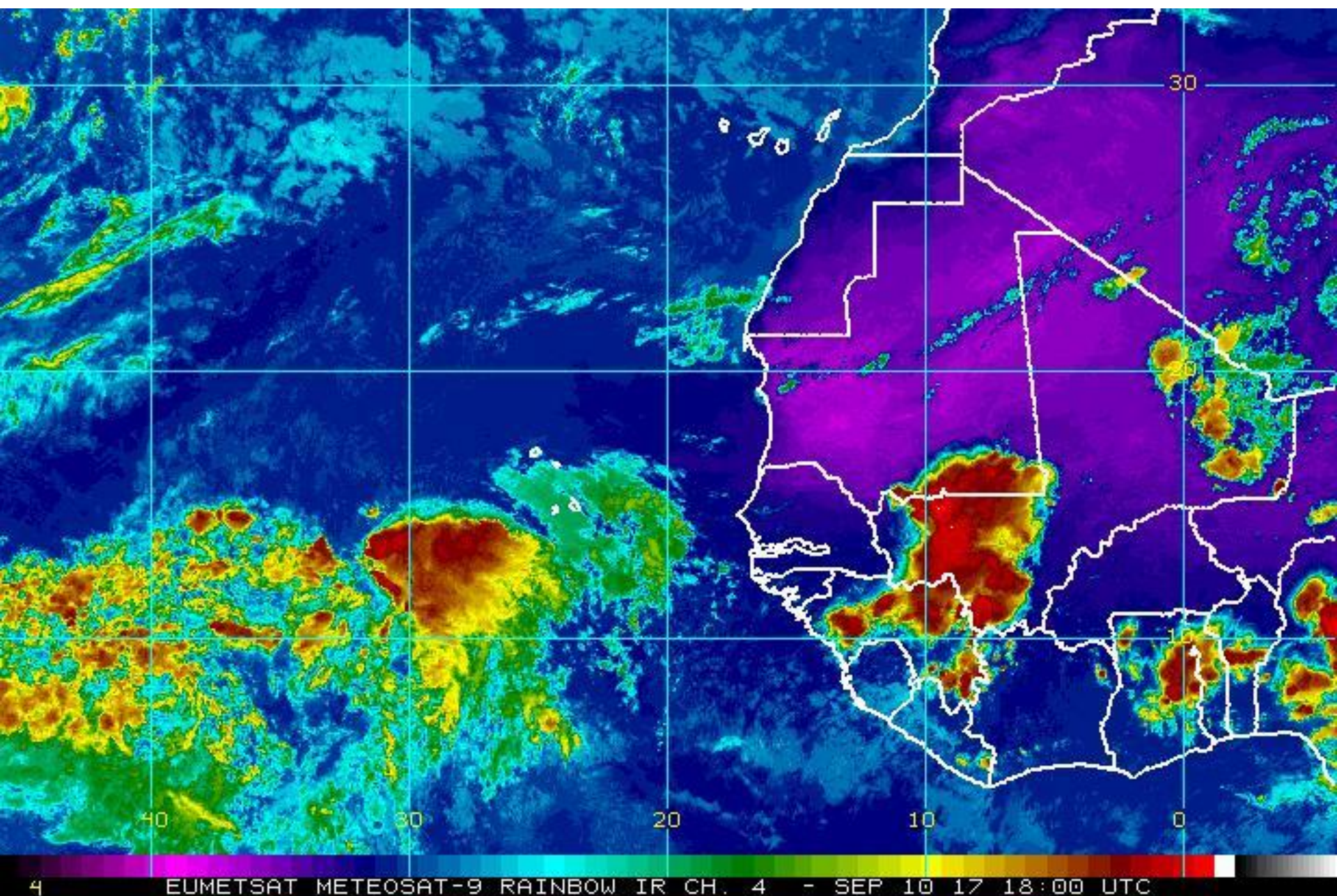
2:00 pm EDT  
Sun Sep 10 2017

Current Disturbances and Five-Day Cyclone Formation Chance: < 40% 40-60% > 60%

Tropical or Sub-Tropical Cyclone: Depression Storm Hurricane

Post-Tropical Cyclone Remnants





4 EUMETSAT METEOSAT-9 RAINBOW IR CH. 4 - SEP 10 17 18:00 UTC



# Summary

- At 5pm EDT Sunday, Hurricane Irma was moving north at 14 mph with maximum sustained winds of 110 mph, making Irma a category 2 storm on the Saffir-Simpson hurricane wind scale.
- Irma is expected to be a category 1 Storm as it enters the Central Florida regions with sustained winds of a category 1 but will see category 2 gusts. Land interaction will continue to weaken the system.
- On the current forecast track, Irma is entering Naples and moving North in Tampa by later this evening and will move into the big bend and the south Georgia by Monday afternoon.
- The forecast track moved slightly northward and eastward in this advisory as Irma has made landfall in Naples Florida and is moving due north.
- Tropical Storm force winds expected throughout most of the state through tomorrow.
- At 5pm EDT Saturday, Hurricane Jose was located near latitude 22.8 North, Longitude 66.9 West moving Northwest at 16 mile per hour. This is well north of the Leeward Islands.
- Maximum sustained winds are near 120mph, which is a Category 3 on the Saffir-Simpson Hurricane Wind Scale.
- Jose has weakened but is expected to remain a hurricane continuing to move to the northwest slowly and beginning to turn toward the northeast Monday night.
- Shower and thunderstorm activity associated with a tropical wave located several hundred miles southwest of the Cabo Verde Islands has shown signs of organization.
- Environmental conditions are expected to support at least some additional development, and there is a 60% chance that a tropical depression could form in a few days while the system moves generally northwestward over the eastern Atlantic Ocean.



# Florida Outlook

- Nearly all of the Florida Peninsula and Florida Panhandle will continue to feel impacts from this system.
- A **Hurricane Warning** is now in effect for all Florida counties east of the Apalachicola River, including Lake Okeechobee and Florida Bay.
- A **Storm Surge Warning** is now in effect from the Ochlockonee River southward around the Florida Peninsula to North Miami Beach and from Jupiter Inlet to Fernandina Beach, including the Florida Keys and Tampa Bay.
- A **Tropical Storm Warning** is in effect for Bay, Calhoun, Gulf, Holmes, Jackson, Walton, and Washington counties.
- Rainfall amounts could reach as high as 10-15" with isolated higher totals of 20" possible in the Peninsula. Lesser amounts of 4-9" are expected in the Big Bend and less than that in the Panhandle.
- Flash Flood Watches are in effect for the entire Peninsula and Big Bend.
- Significant river flooding is expected in the coming days in many rivers of Central and Southwest FL. Some river flooding is also now expected in Northeast Florida and the eastern Big Bend.
- Life-threatening storm surge will be impacting the West Coast of Florida today, especially SW FL.
- Isolated tornadoes are possible in the outer bands of Irma and will spread northward tonight and tomorrow. A **Tornado Watch** is in effect for Central and Northeast Florida, with additional tornado watches possible into Northeast Florida tomorrow.
- Hurricane Jose does not pose a threat to Florida within the next 5-7 days, but should be monitored.

Another briefing packet will be issued Monday Morning. For more information, visit the NHC website at [www.hurricanes.gov](http://www.hurricanes.gov).





# TROPICAL UPDATE

Created by:

Michael Spagnolo, Deputy State Meteorologist

[Michael.spagnolo@em.myflorida.com](mailto:Michael.spagnolo@em.myflorida.com)

State Meteorological Support Unit

Florida Division of Emergency Management

Users wishing to subscribe (approval pending) to this distribution list, register at  
[https://public.govdelivery.com/accounts/FLDEM/subscriber/new?topic\\_id=SERT\\_Met\\_Tropics](https://public.govdelivery.com/accounts/FLDEM/subscriber/new?topic_id=SERT_Met_Tropics).

Other reports available for subscription are available at

<https://public.govdelivery.com/accounts/FLDEM/subscriber/new?preferences=true>