



TROPICAL UPDATE

5 PM EDT

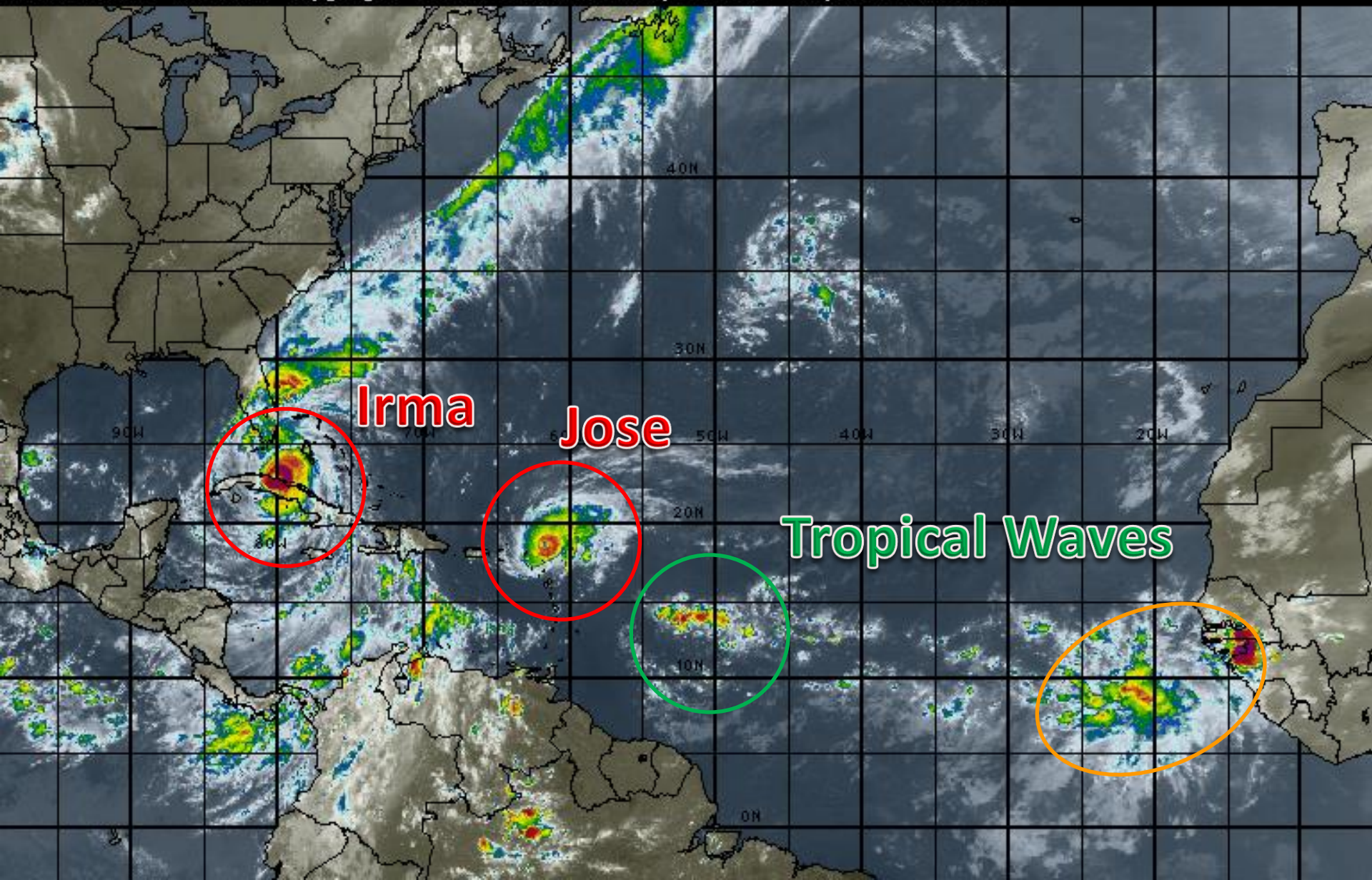
Saturday, September 9, 2017

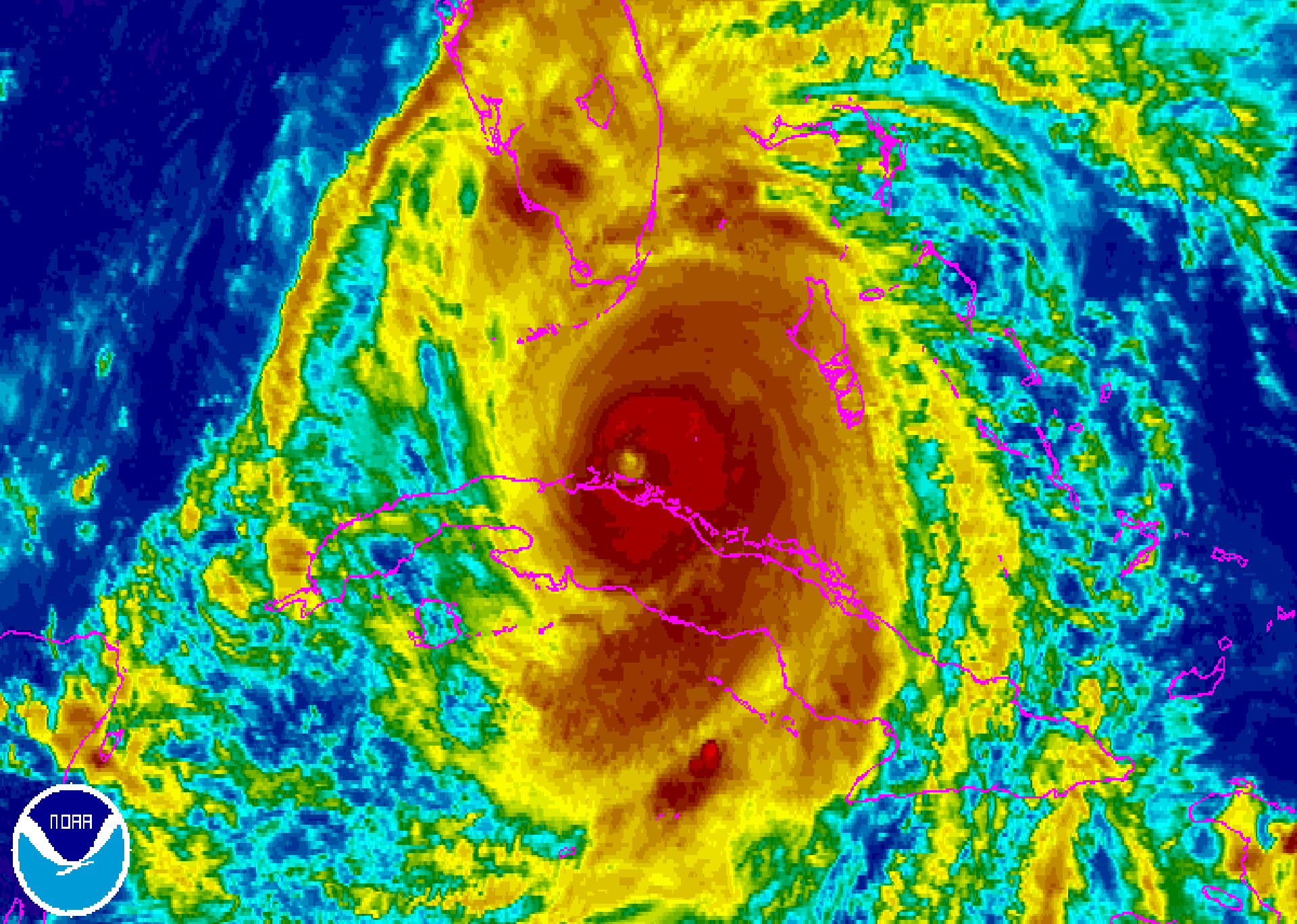
**Hurricane Irma, Hurricane Jose, and
Atlantic Tropical Wave (40%)**

This update is intended for government and emergency response officials, and is provided for informational and situational awareness purposes only. Forecast conditions are subject to change based on a variety of environmental factors. For additional information, or for any life safety concerns with an active weather event please contact your County Emergency Management or Public Safety Office, local National Weather Service forecast office or visit the National Hurricane Center website at www.nhc.noaa.gov.

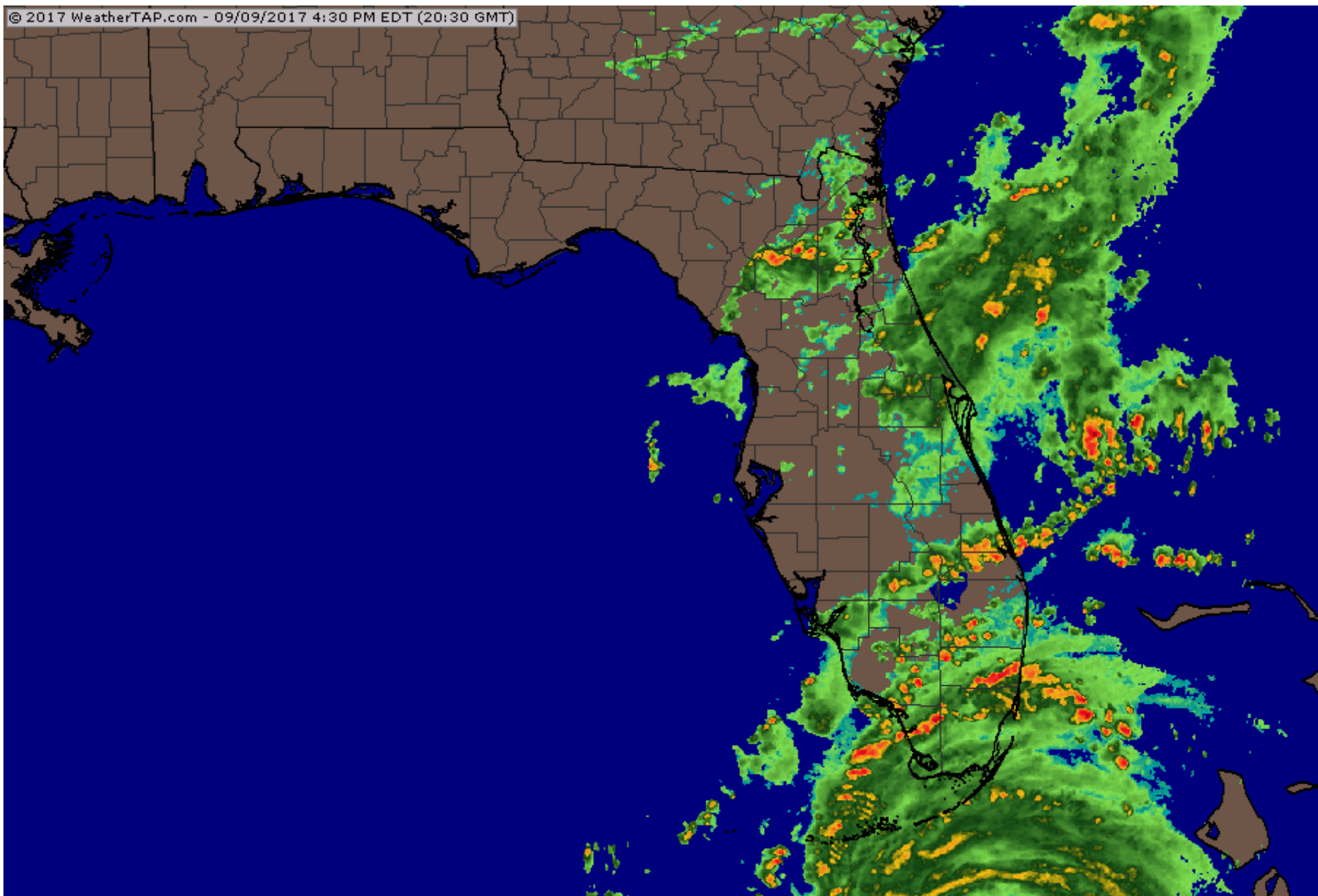
Atlantic Basin Satellite Image

18:00 09-SEP-2017 GMT Copyright © 1998-2016 WSI Corporation <http://www.wsi.com>



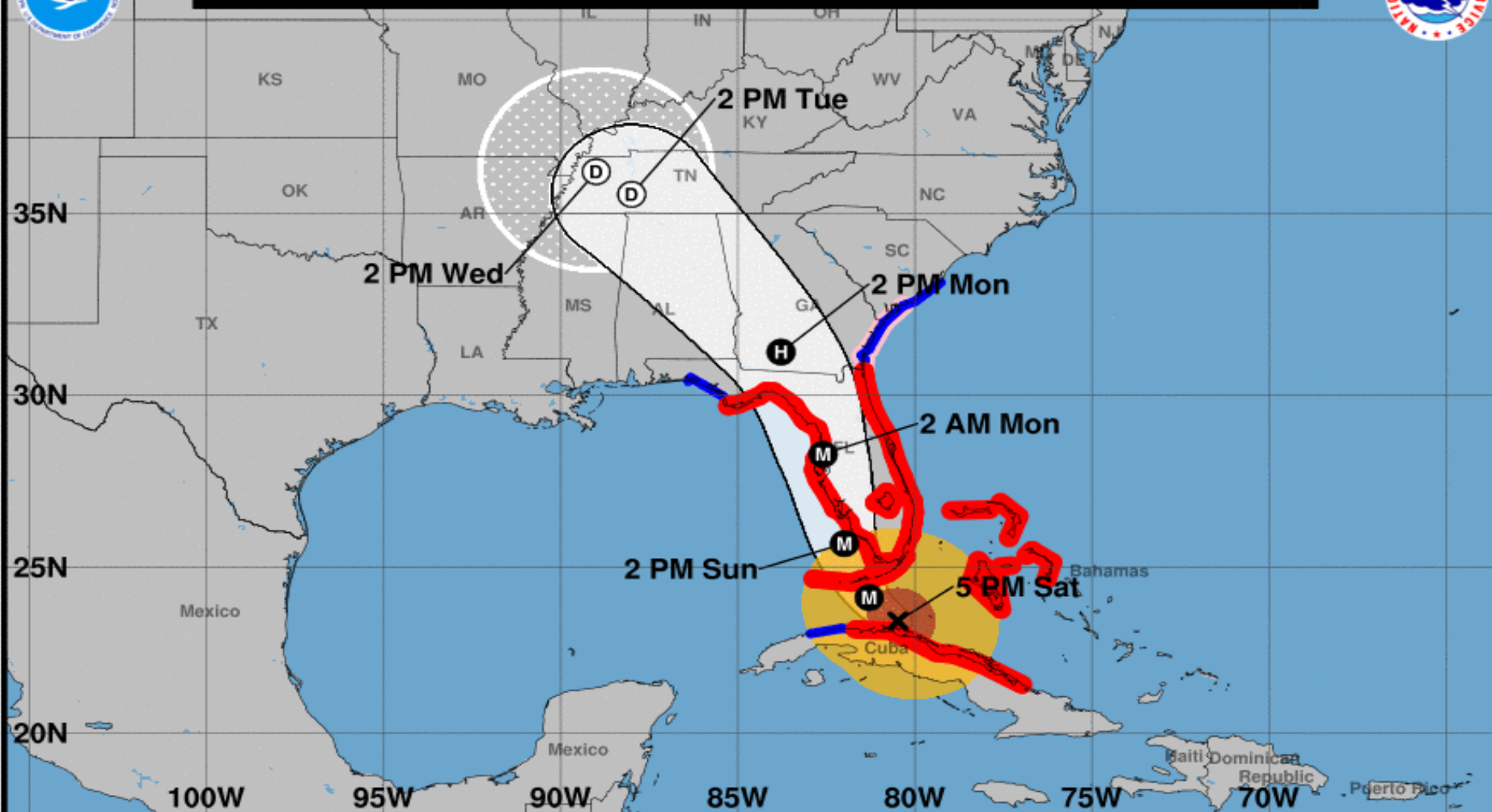


State radar as of 4:30pm EDT Saturday





Note: The cone contains the probable path of the storm center but does not show the size of the storm. Hazardous conditions can occur outside of the cone.



Hurricane Irma

Saturday September 09, 2017

5 PM EDT Advisory 43

NWS National Hurricane Center

Current information: x

Center location 23.4 N 80.5 W

Maximum sustained wind 125 mph

Movement WNW at 9 mph

Forecast positions:

● Tropical Cyclone ○ Post/Potential TC

Sustained winds: D < 39 mph

S 39-73 mph H 74-110 mph M > 110 mph

Potential track area:

Day 1-3 Day 4-5

Watches:

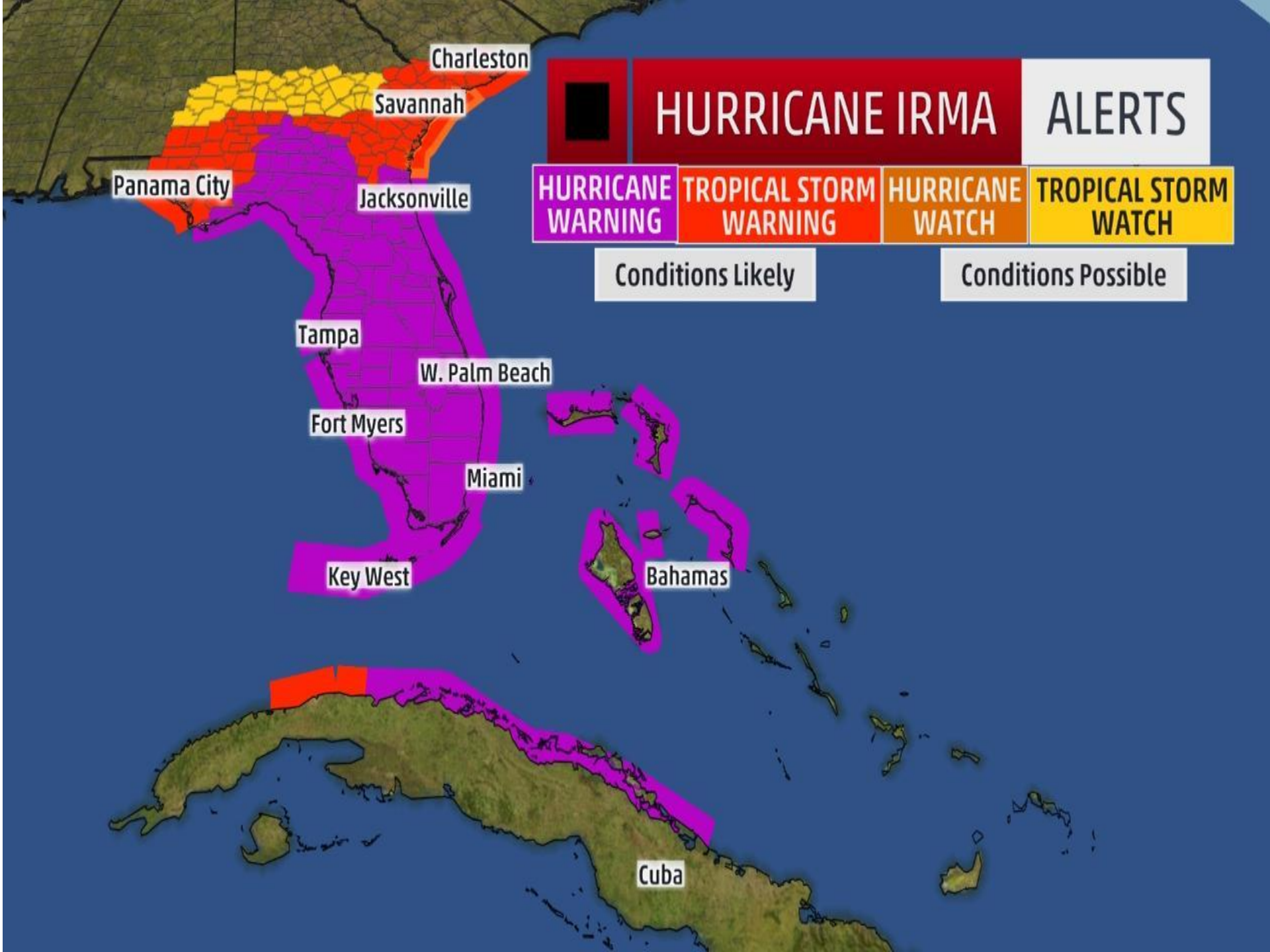
Hurricane Trop Stm

Warnings:

Hurricane Trop Stm

Current wind extent:

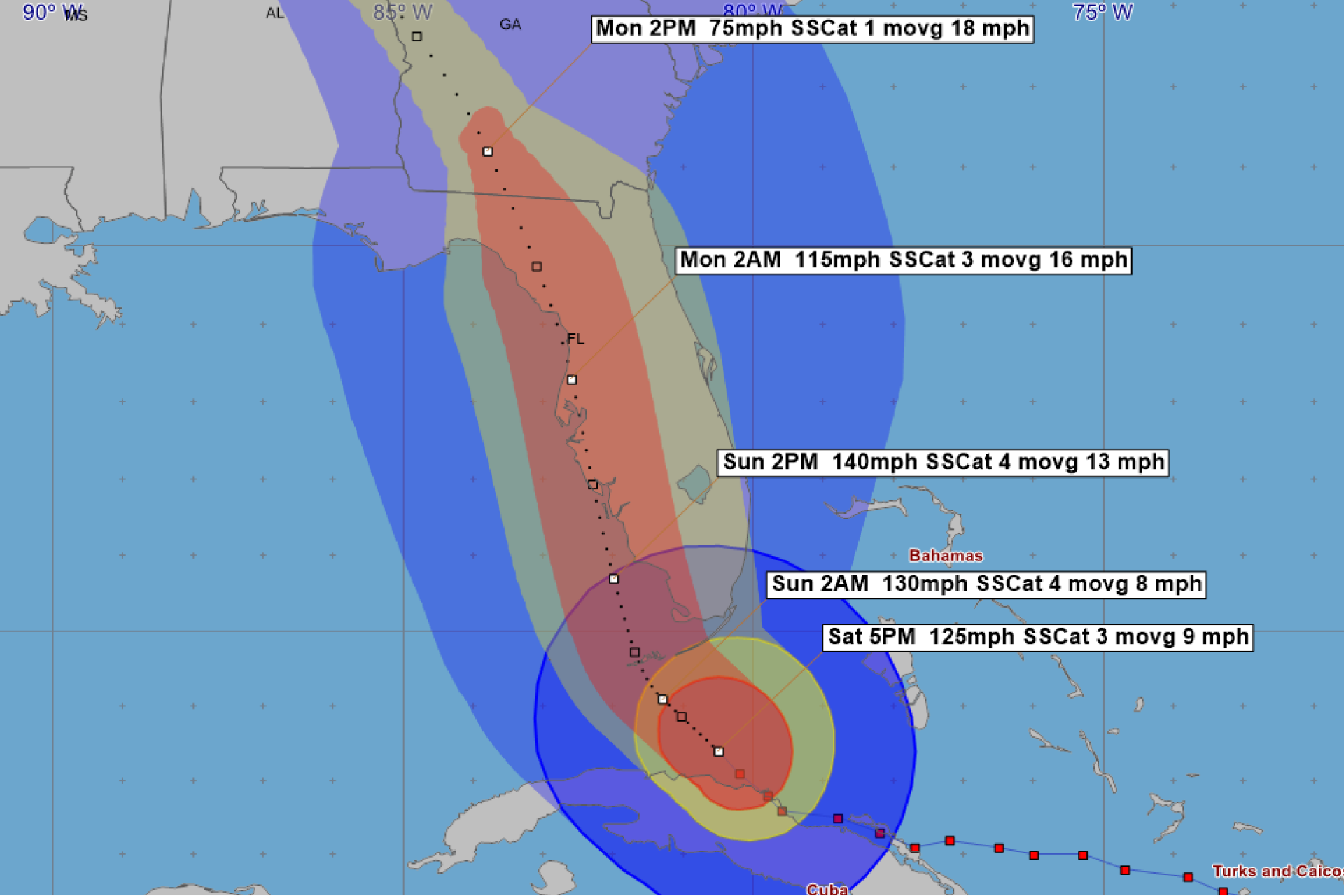
Hurricane Trop Stm





For the 120 hours (5.0 days) from 2 PM EDT SAT SEP 09 to 2 PM EDT THU SEP 14





Hurricane Irma - Saturday, September 9, 2017 5 PM EDT Advisory #43

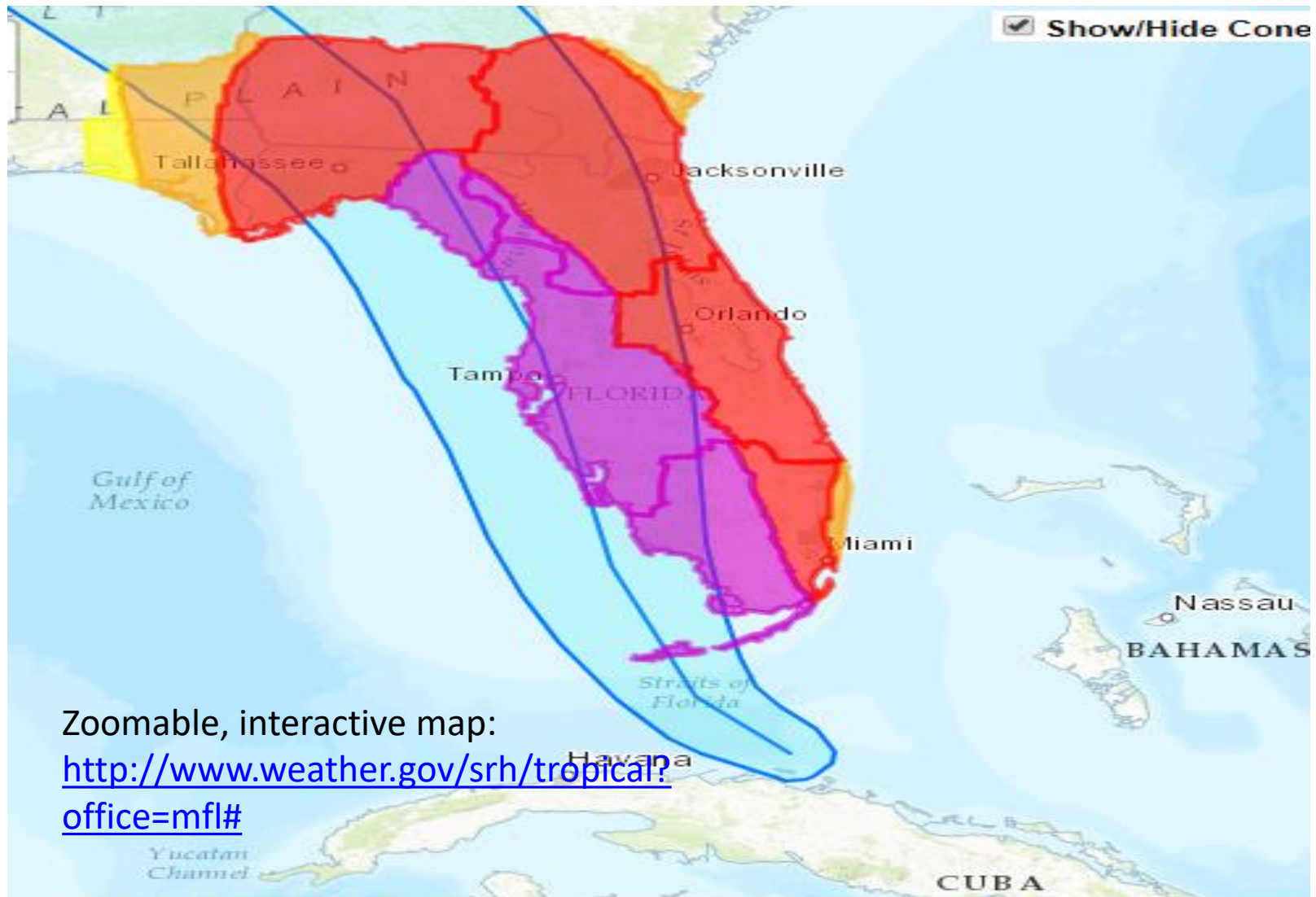
Center Location: 23.4 N 80.5 W Maximum Sustained Winds: 125 mph (Cat 3) Movement: 9 mph WNW

□ forecast positions

Surface Wind Field: ● at current location

● along 3-day forecast track

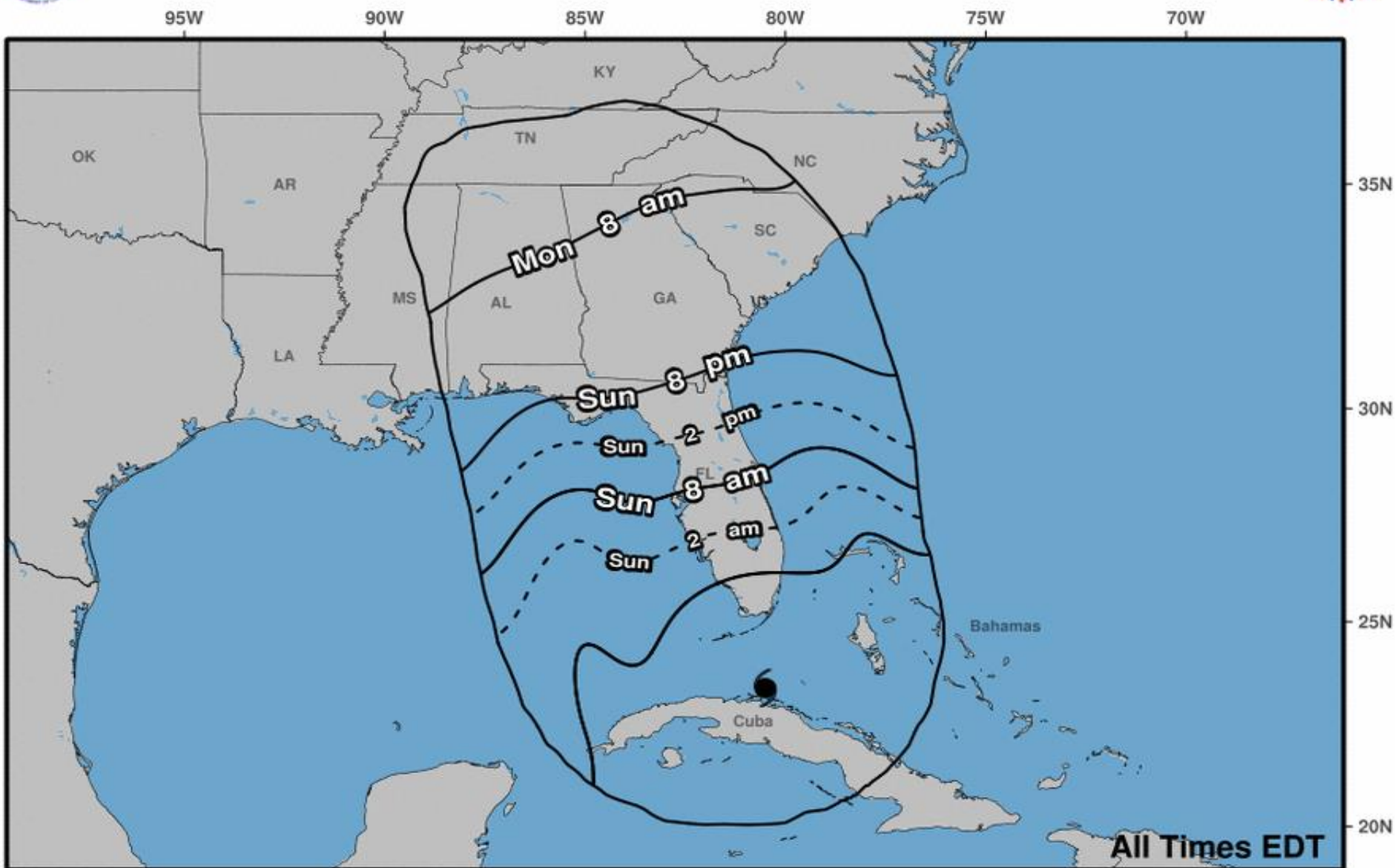
Sustained Wind Speeds: ■ tropical storm ≥ 34 kt/39mph ■ strong tropical storm ≥ 50 kt/58mph ■ hurricane ≥ 64 kt/74mph



Wind Threat
Extreme - Potential for wind > 110 mph
High - Potential for wind 74 to 110 mph
Moderate - Potential for wind 58 to 73 mph
Elevated - Potential for wind 39 to 57 mph
Little to None - Wind < 39 mph



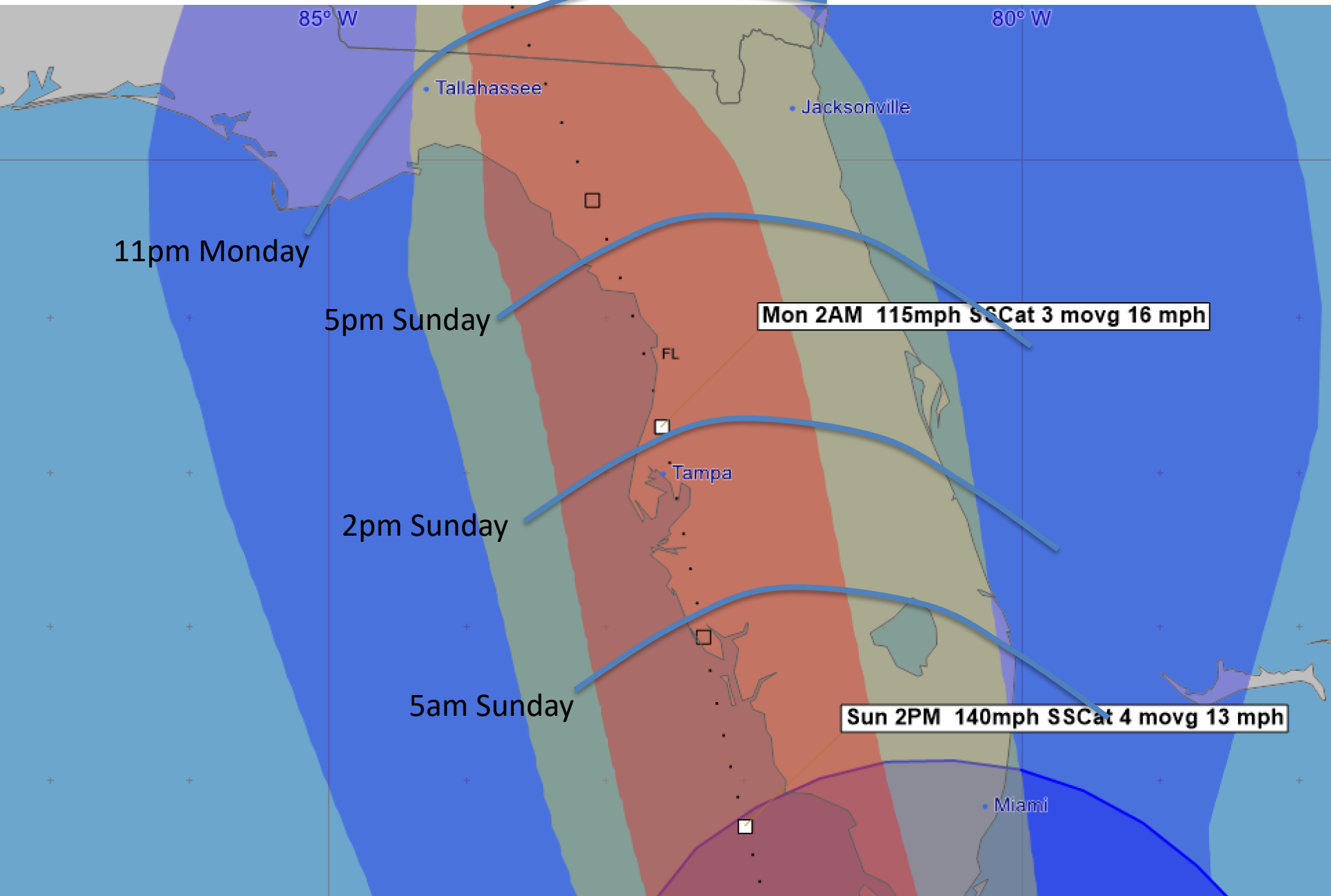
Earliest Reasonable Arrival Time of Tropical-Storm-Force Winds



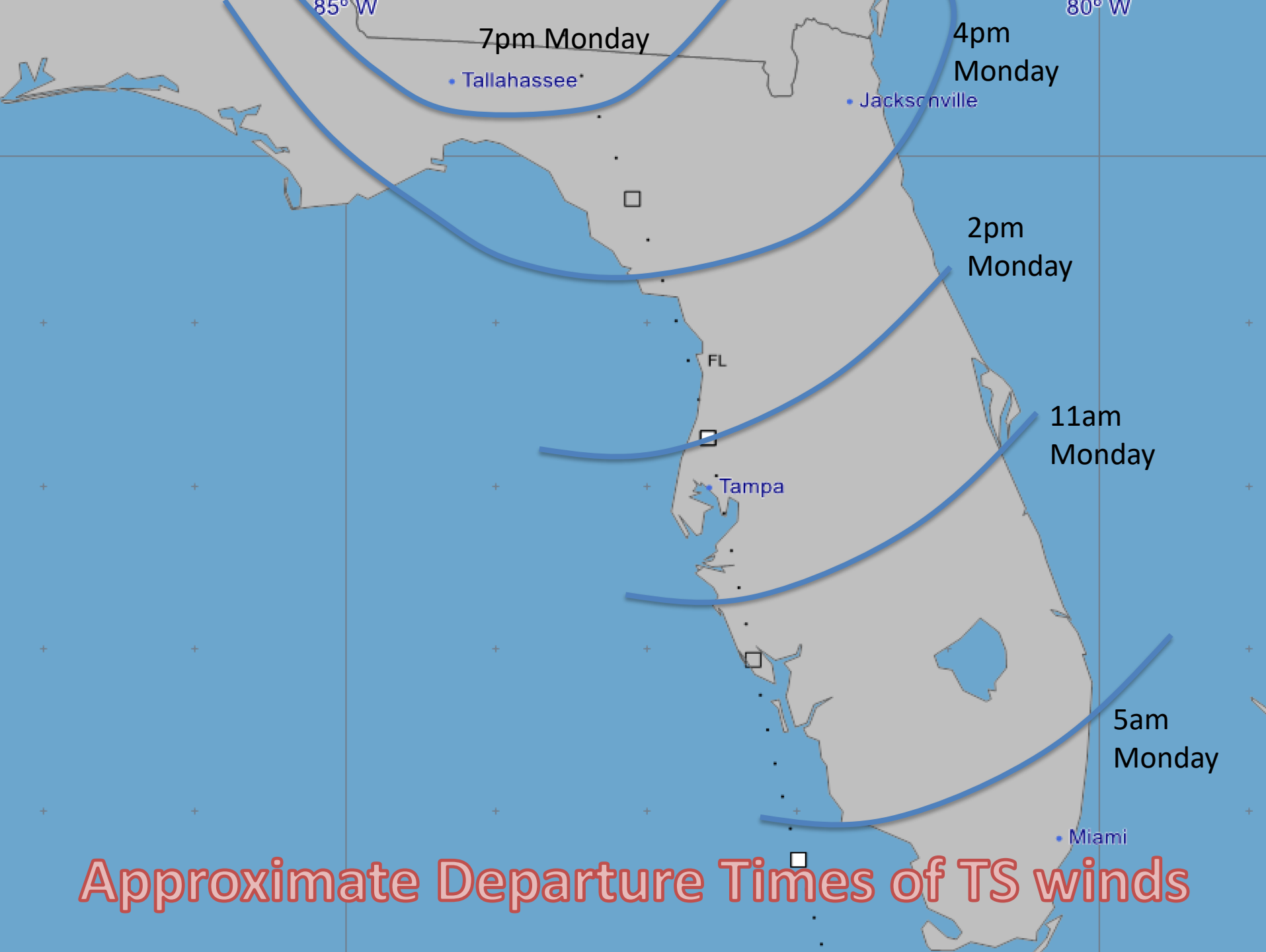
Hurricane Irma
Sat. Sep. 9, 2017 5 pm EDT
Advisory 43

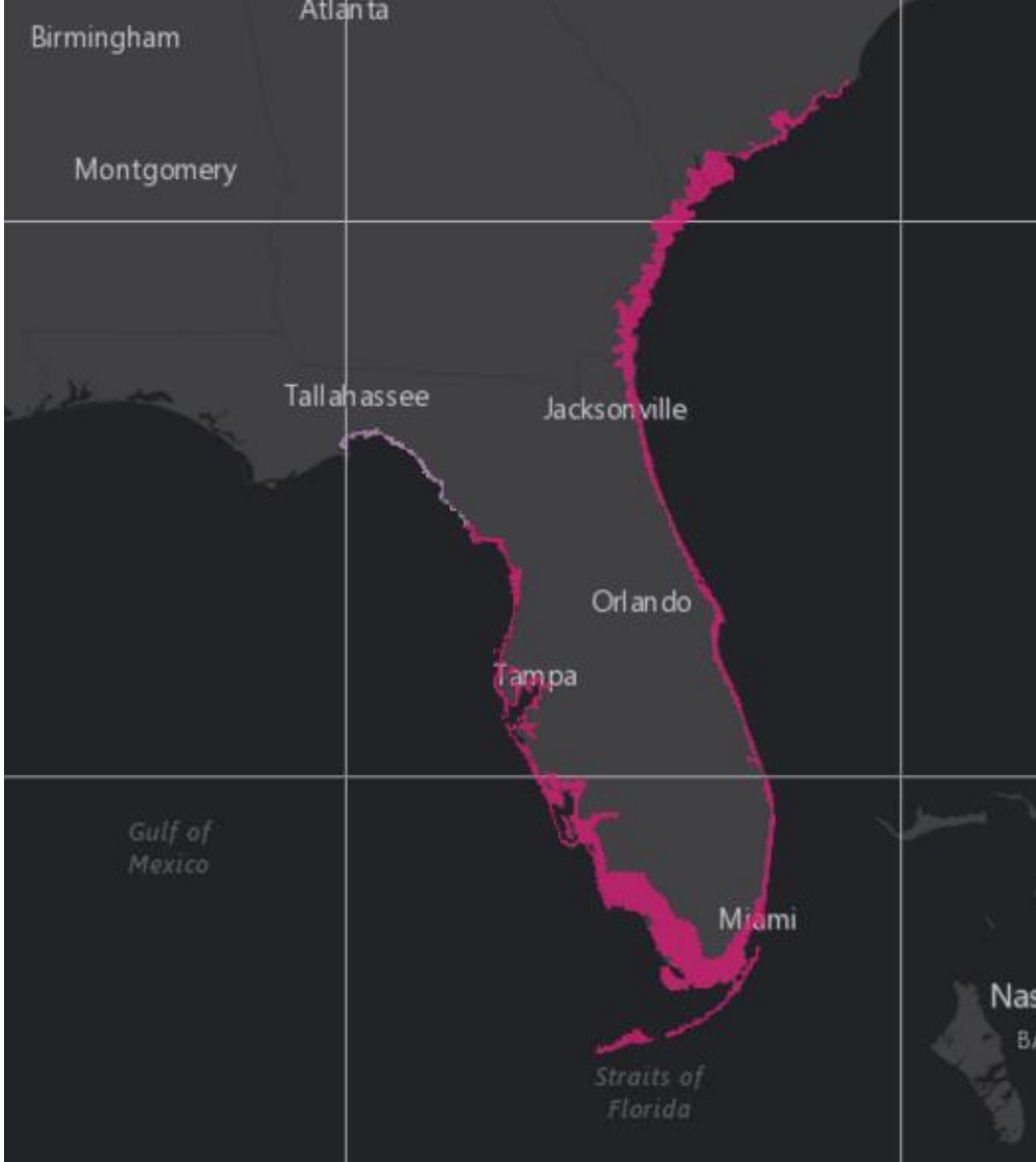
Storm Location &
Wind Speed (knots)

○ <34 ◐ 34-63 ● ≥64



Most Likely Arrival Times of TS winds





Storm Surge Warning

Storm Surge Watch

Zoomable maps available here:

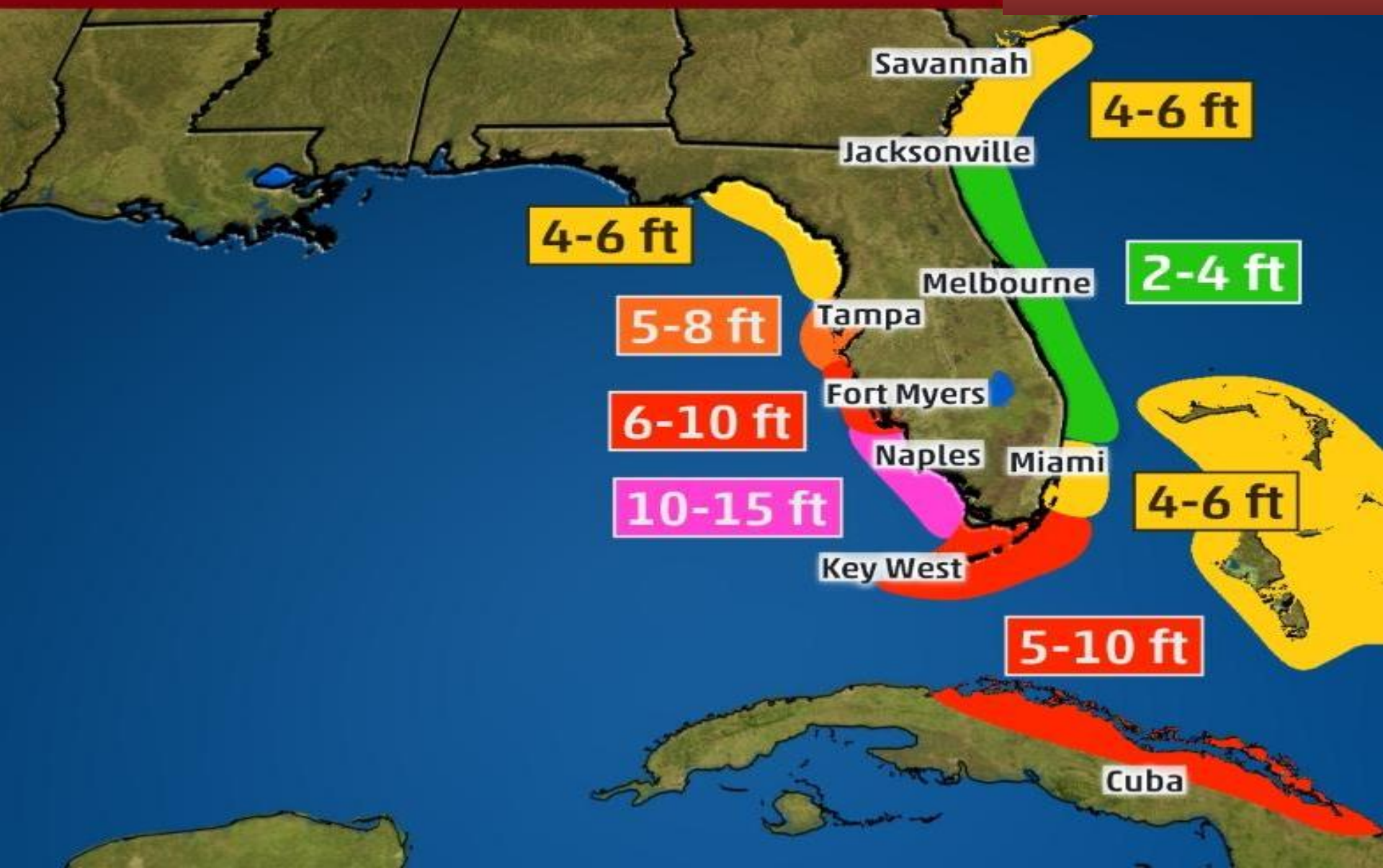
http://www.nhc.noaa.gov/refresh/graphics_at1+shtml/154730.shtml?wsurge#contents

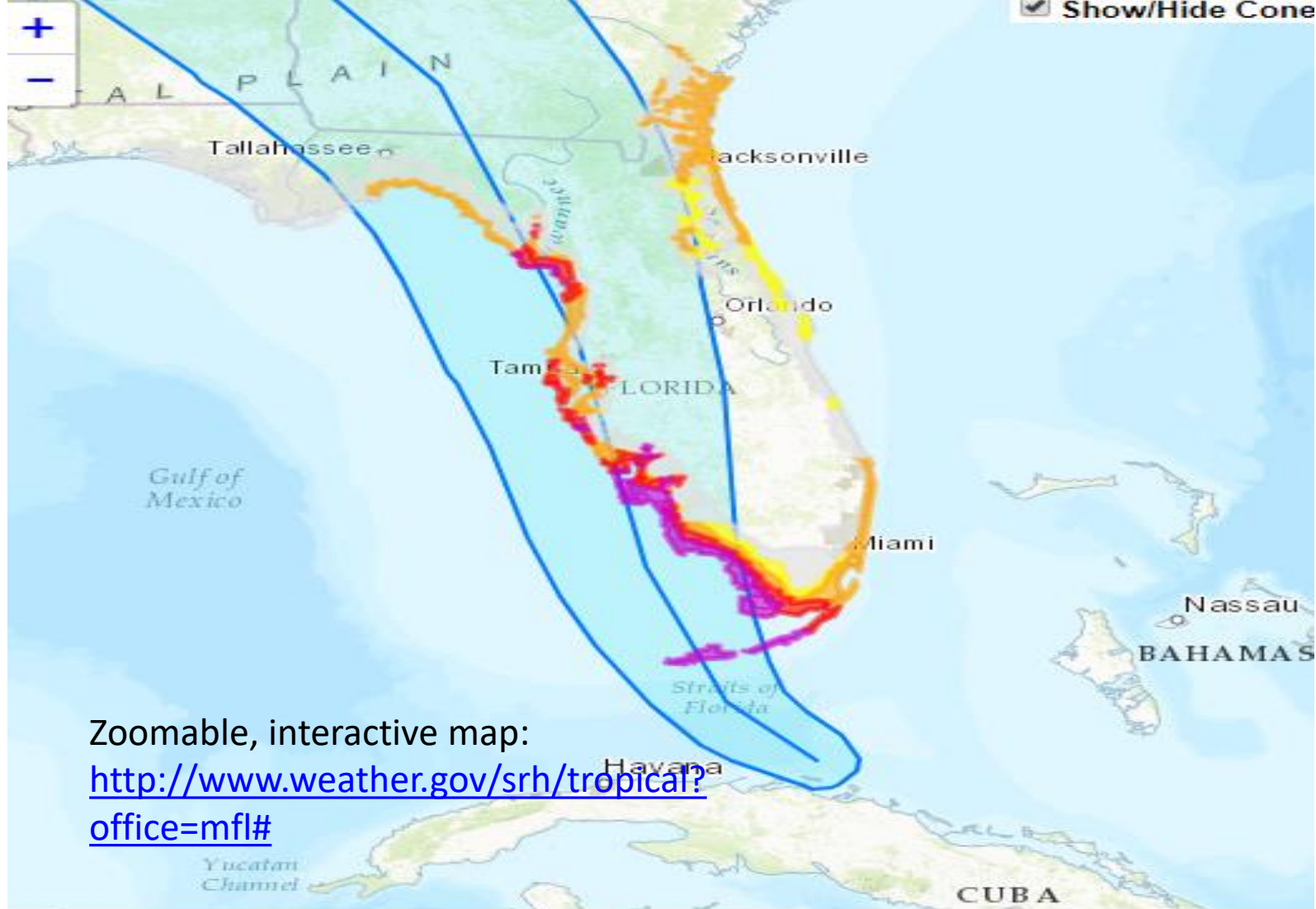
Probabilistic Storm Surge

<http://slosh.nws.noaa.gov/psurge2.0/index.php?S=Irma2017&Adv=34&Ty=e10&Z=z4&D=agl&Ti=cum&Msg=17&Help=about>

STORM SURGE INUNDATION

Above Normally
Dry Ground

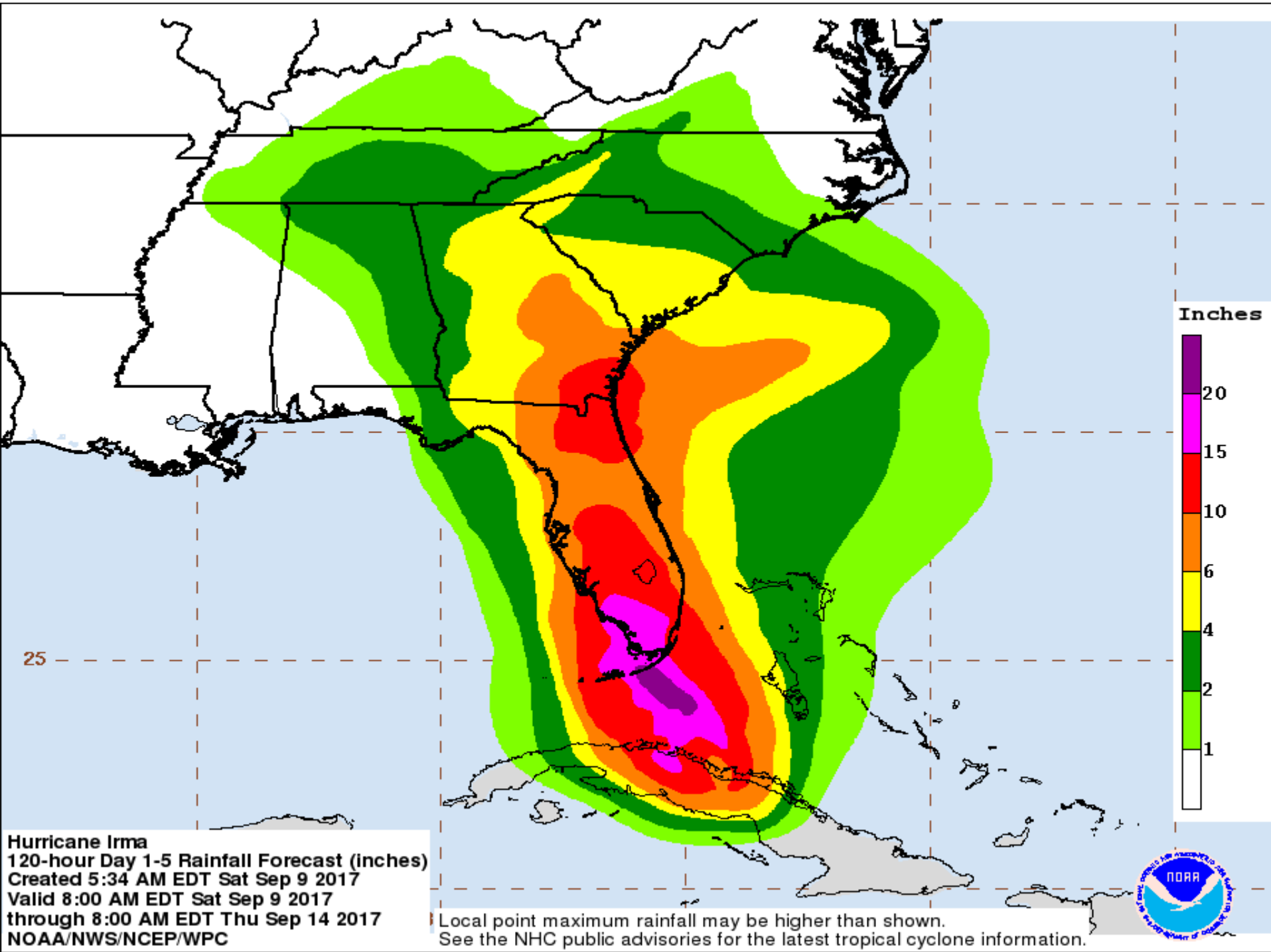




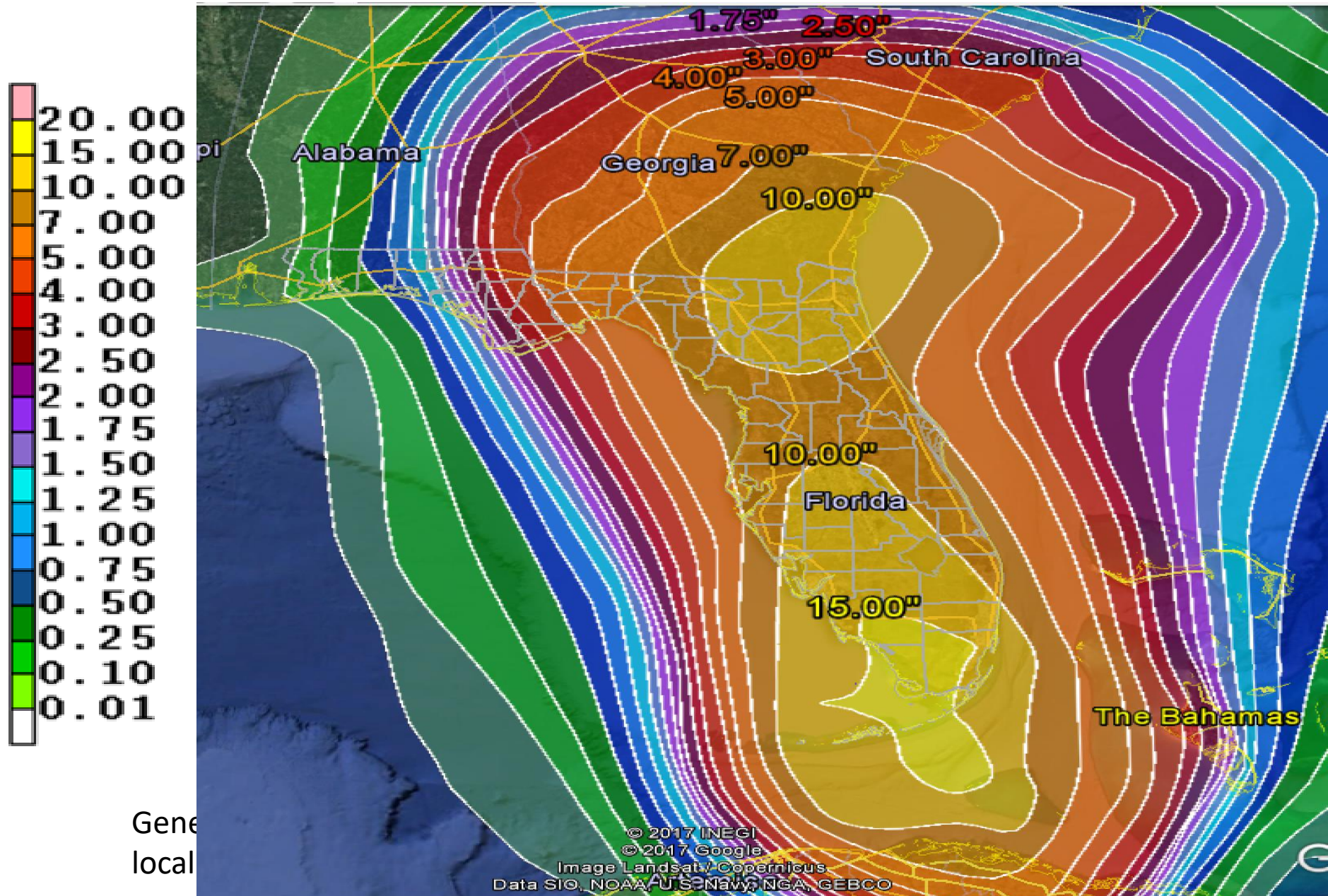
[Download KML]

[Download Image]

Storm Surge Threat
Extreme - Potential for storm surge flooding > 9 ft above ground
High - Potential for storm surge flooding > 6 ft above ground
Moderate - Potential for storm surge flooding > 3 ft above ground
Elevated - Potential for storm surge flooding > 1 ft above ground
Little to None - Little to no storm surge flooding



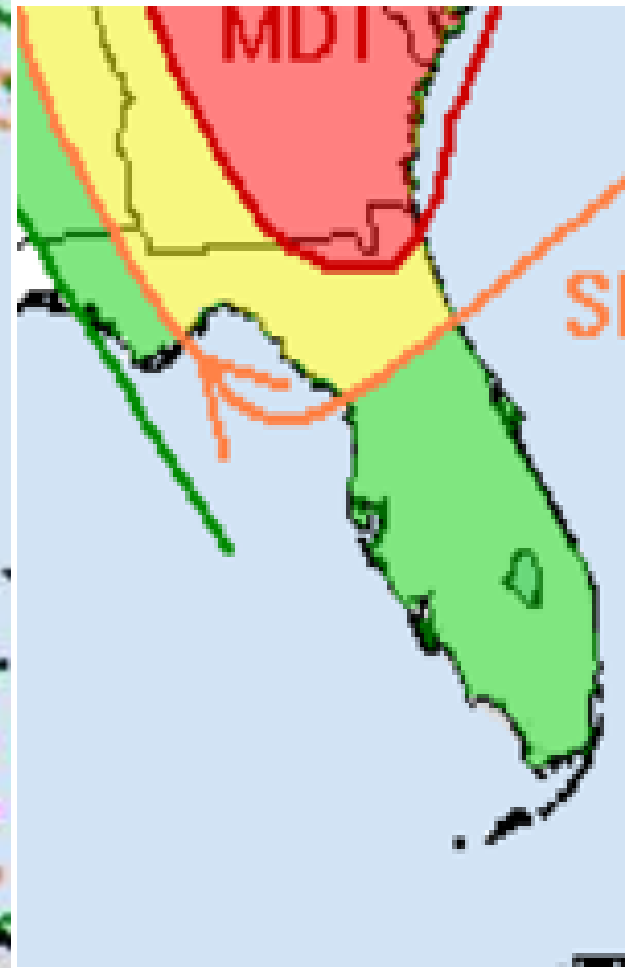
Cumulative Rainfall Forecast Next 2 Days



FLASH FLOOD THREAT

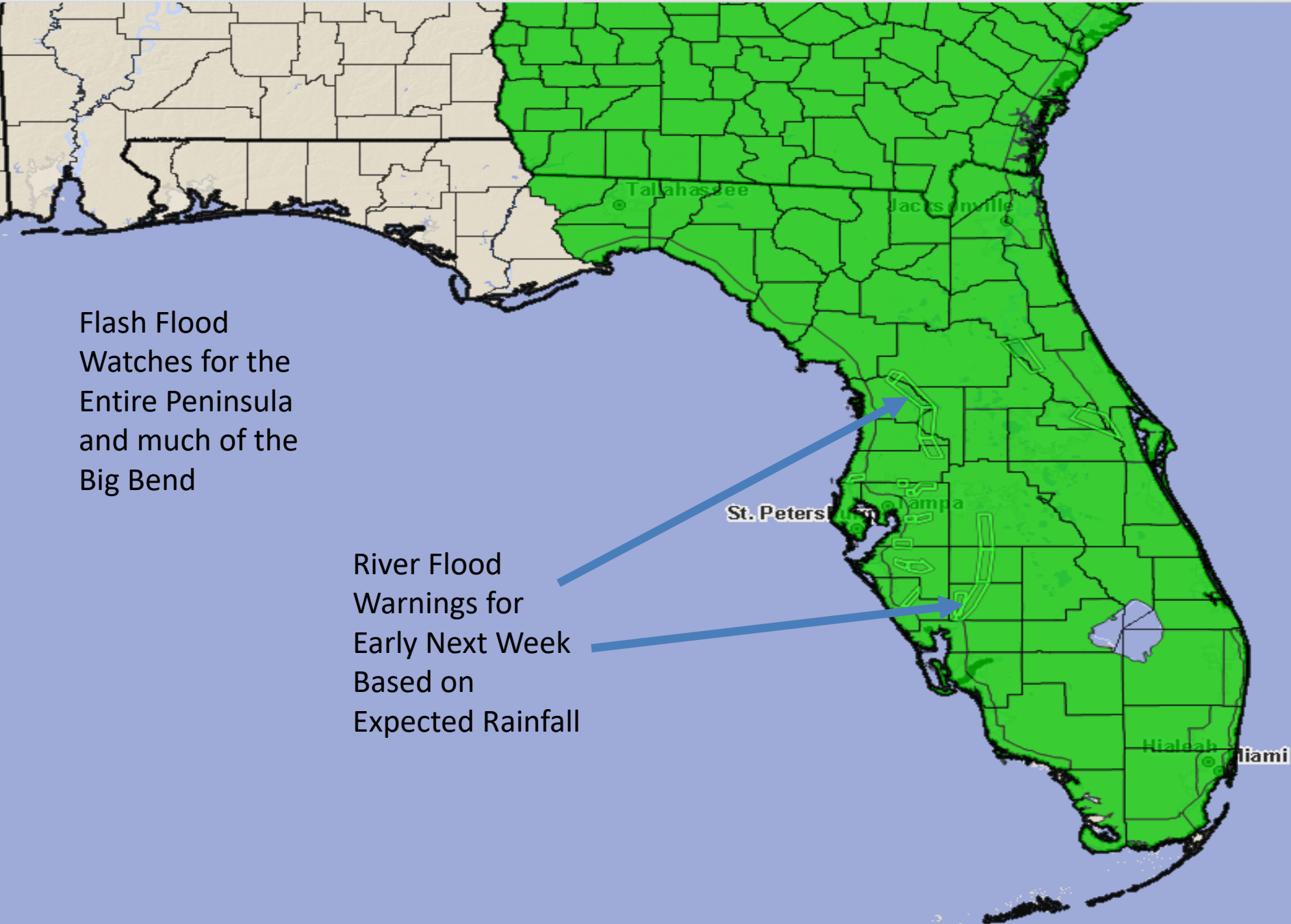
SATURDAY, SUNDAY, & MONDAY

The flood threat for South Florida will increase tonight. The threat will continue to rise for the entire Peninsula on Sunday as heavier, more consistent heavy rain moves into the area.



Flash Flood
Watches for the
Entire Peninsula
and much of the
Big Bend

River Flood
Warnings for
Early Next Week
Based on
Expected Rainfall



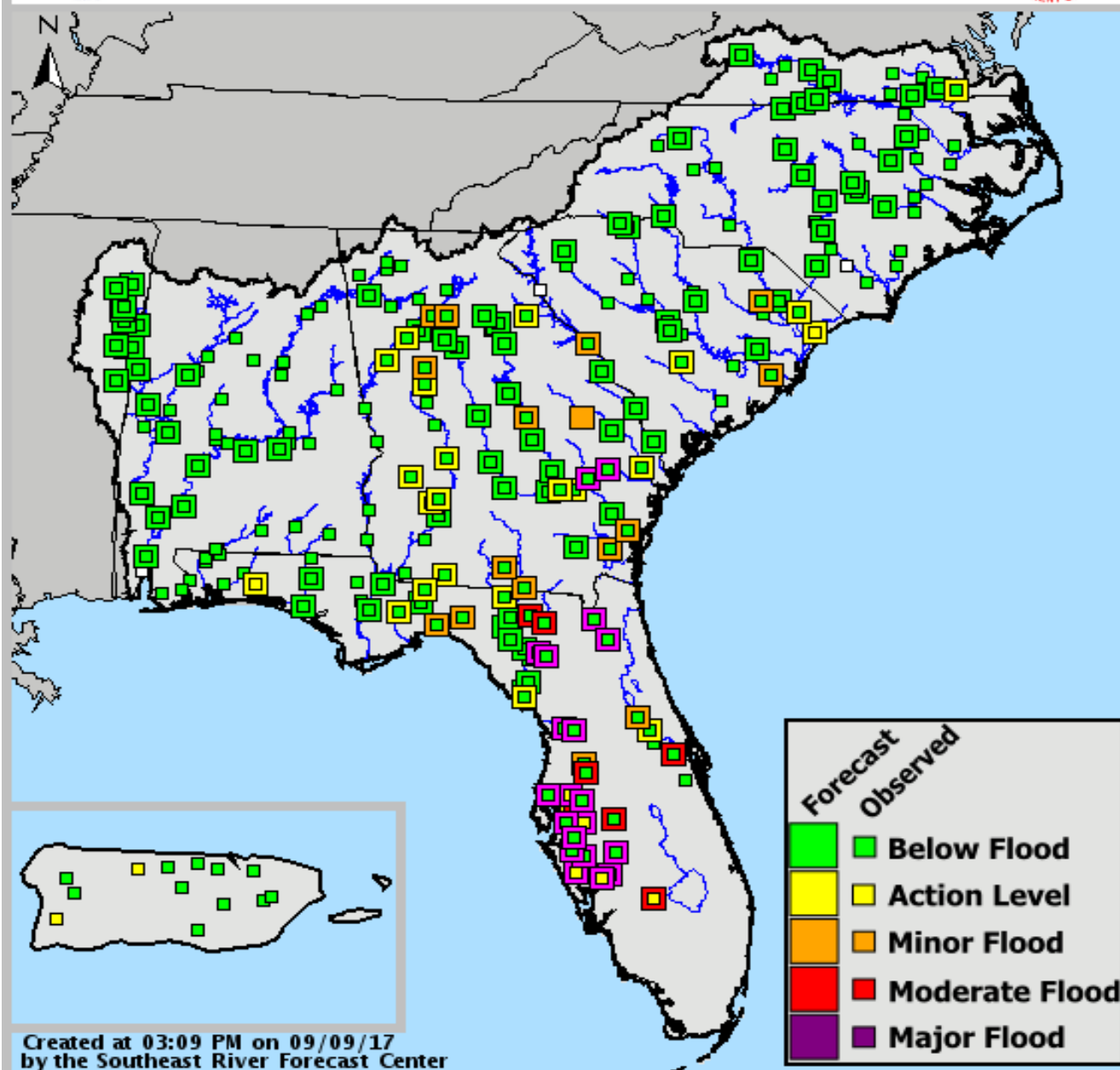


SERFC River Conditions

Valid: 09/09/2017 @ 03:09 PM

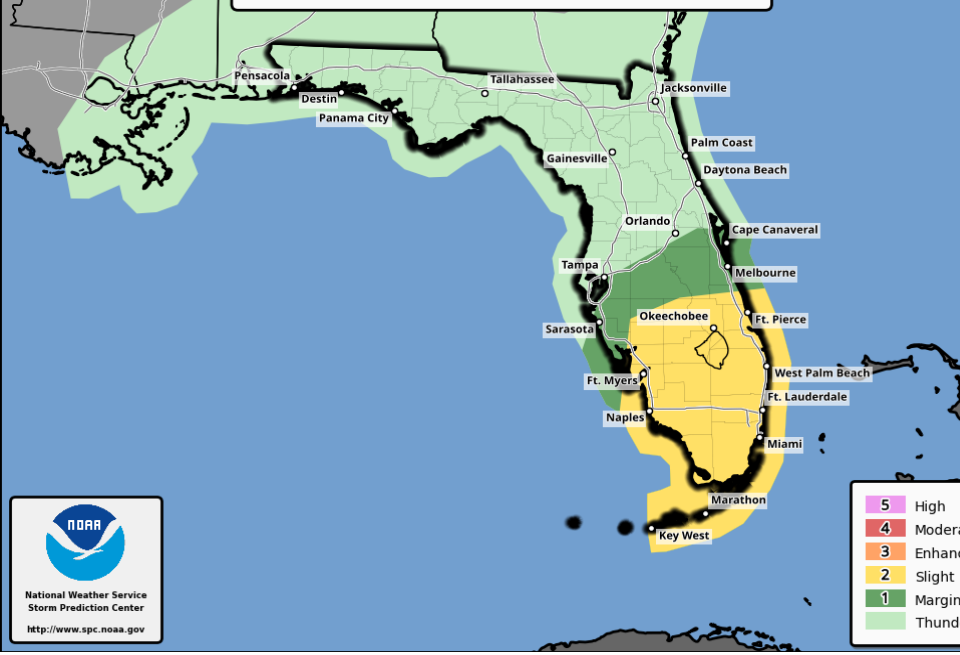


Extensive
river
flooding
expected
across
much of
the Florida
Peninsula



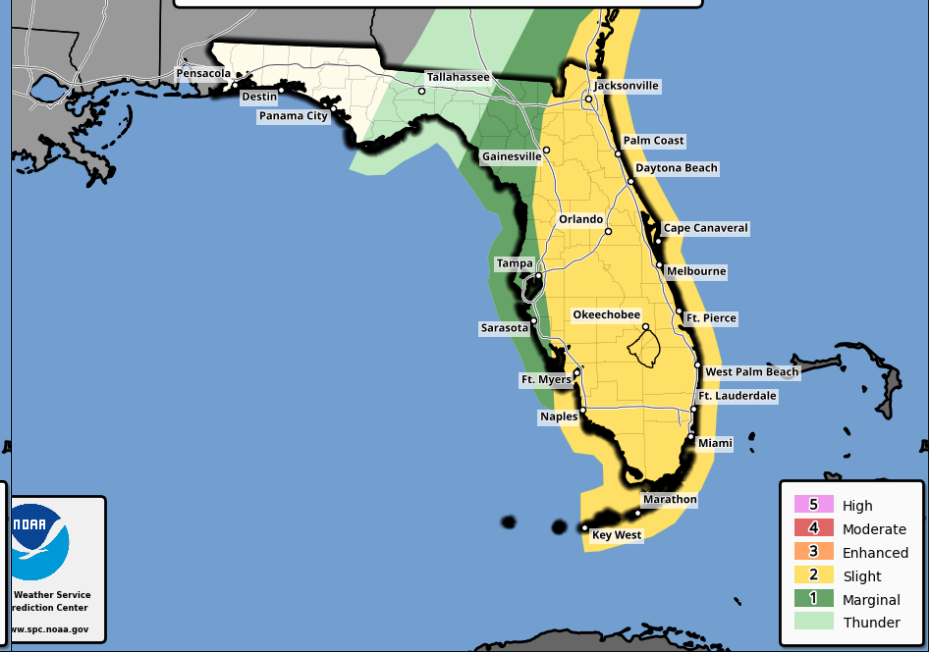
Tornado & Severe Thunderstorm Outlook Saturday, September 09, 2017

Last Updated: Sep 09 2017 1054 AM CDT
Valid Until: Sep 10 2017 0700 AM CDT



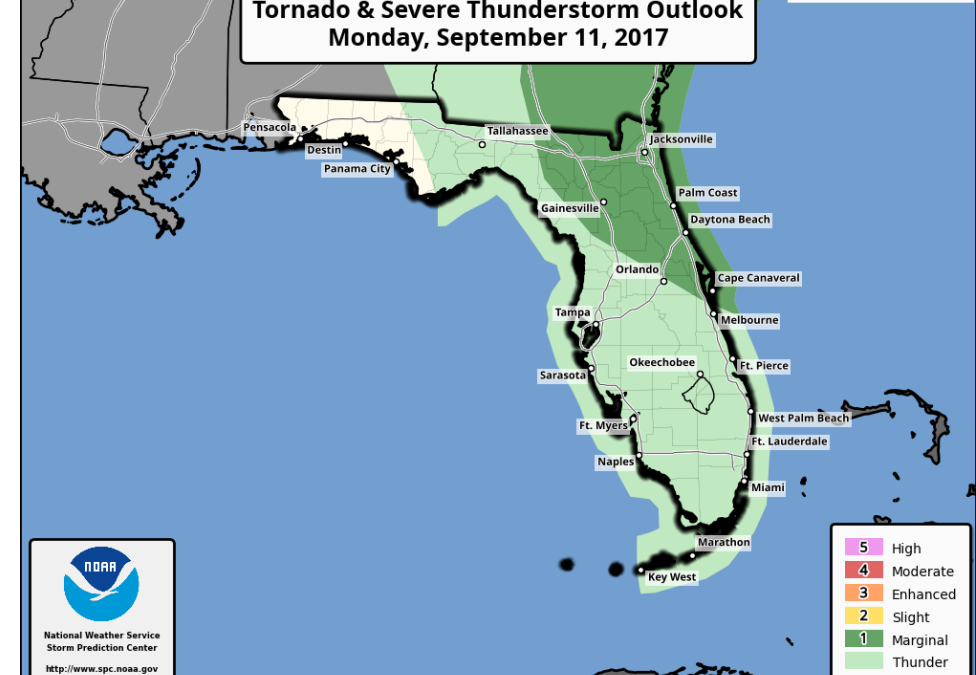
Tornado & Severe Thunderstorm Outlook Sunday, September 10, 2017

Last Updated: Sep 09 2017 1157 AM CDT
Valid Until: Sep 11 2017 0700 AM CDT

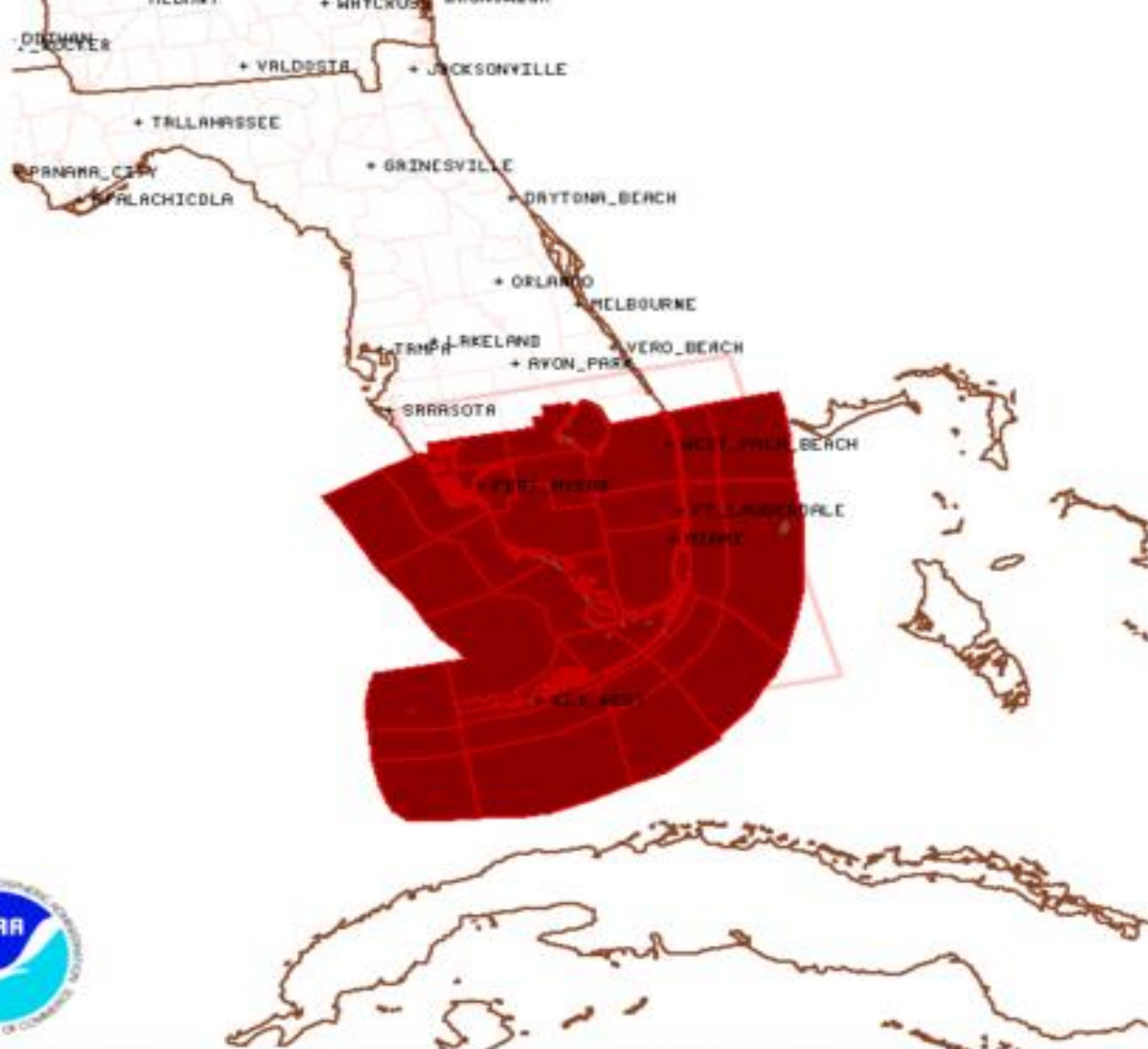


Tornado & Severe Thunderstorm Outlook Monday, September 11, 2017

Last Updated: Sep 09 2017 0216 AM CDT
Valid Until: Sep 12 2017 0700 AM CDT

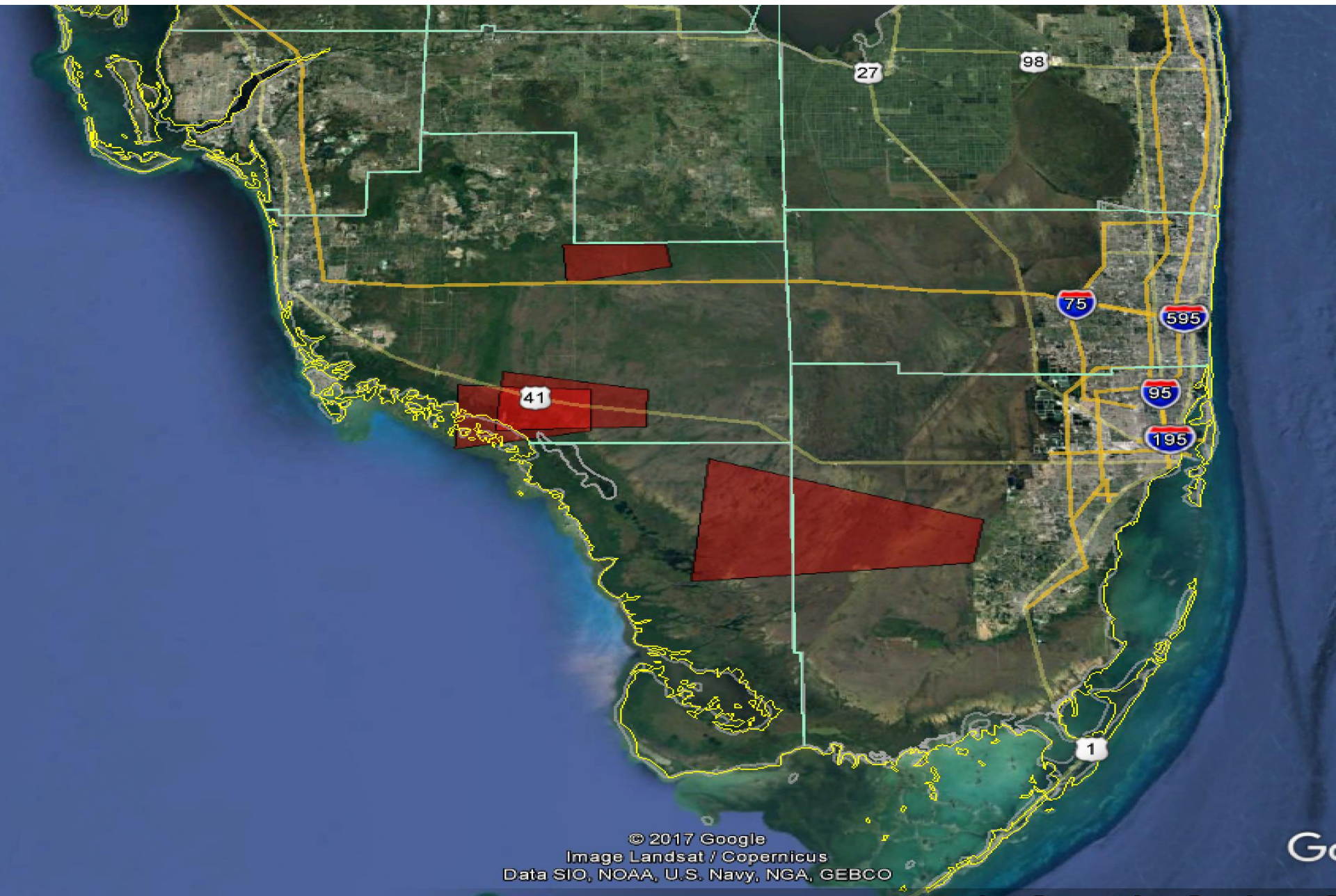


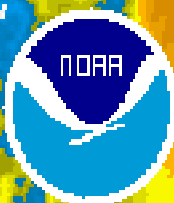
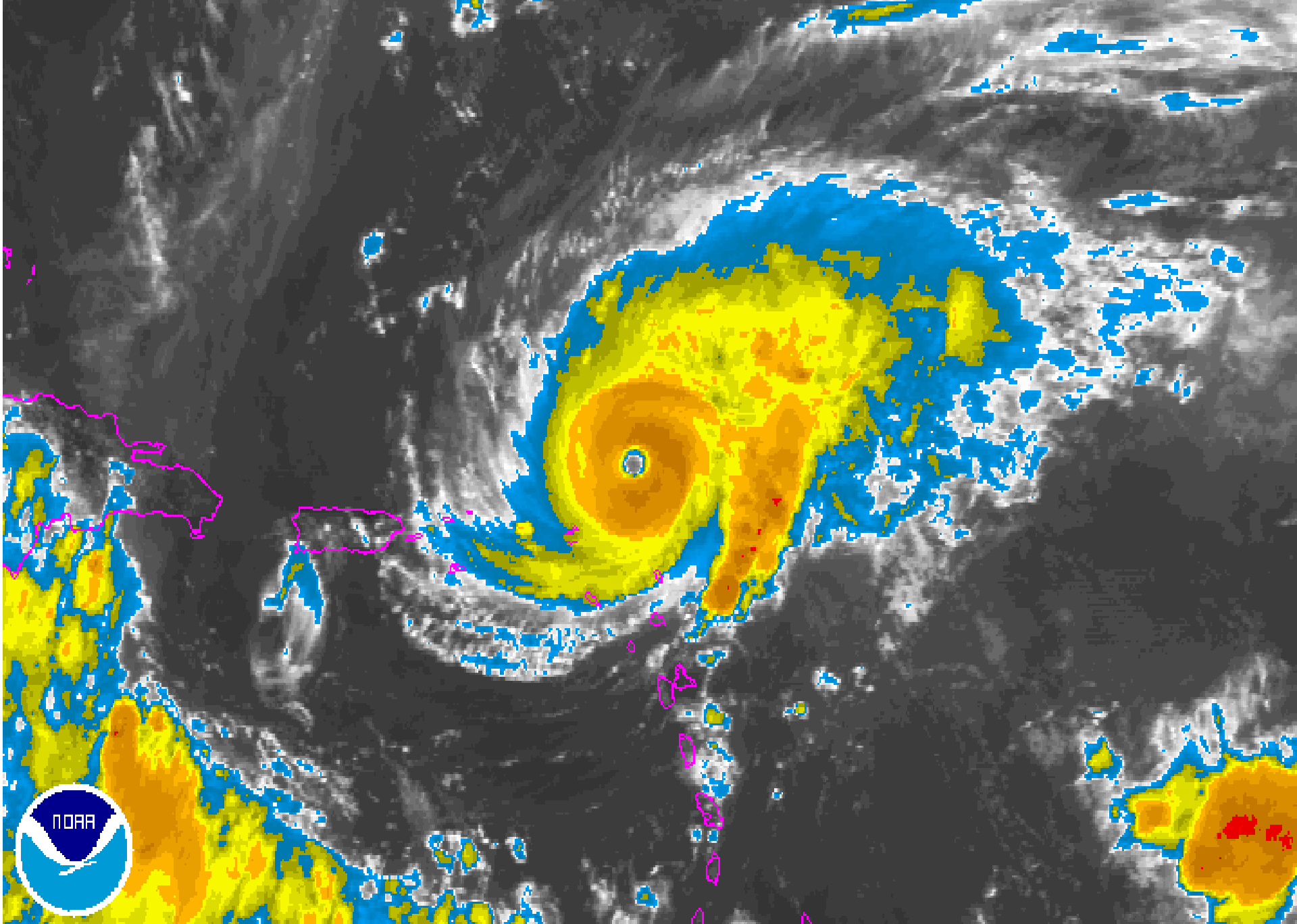
Tornado threat will increase with the outer bands from Irma.
Tornado watches may be extended into portions of the Central and Northeast Florida on tonight or Sunday.



Tornado Watch # 481 - Valid from 1210 PM until 1200 AM EDT

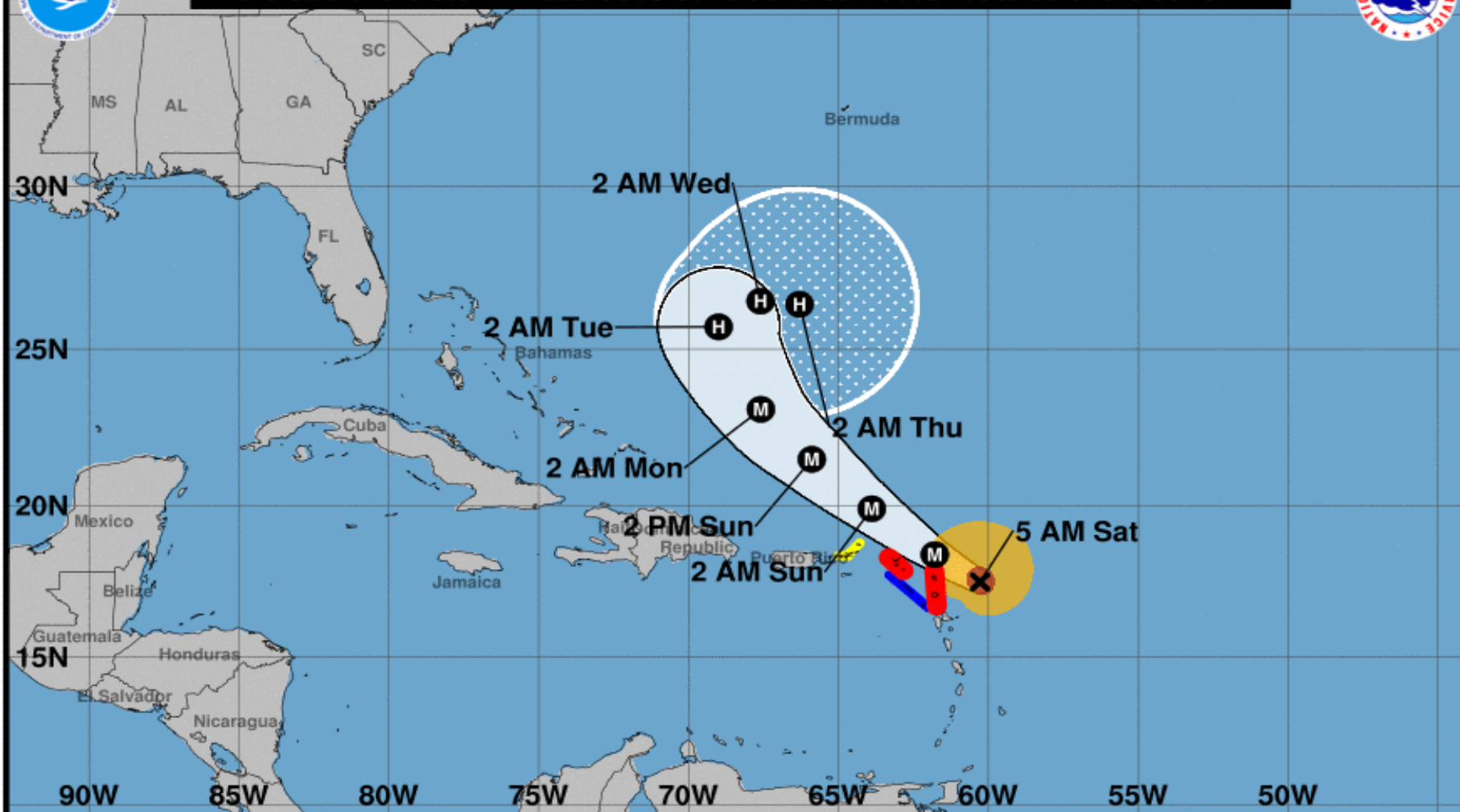
Tornado Warnings So Far Today







Note: The cone contains the probable path of the storm center but does not show the size of the storm. Hazardous conditions can occur outside of the cone.



Hurricane Jose

Saturday September 09, 2017
5 AM AST Advisory 16
NWS National Hurricane Center

Current information: x

Center location 17.5 N 60.3 W
Maximum sustained wind 150 mph
Movement WNW at 13 mph

Forecast positions:

● Tropical Cyclone ○ Post/Potential TC
Sustained winds: D < 39 mph
S 39-73 mph H 74-110 mph M > 110 mph

Potential track area:

Day 1-3 Day 4-5

Watches:

Hurricane Trop Stm

Warnings:

Hurricane Trop Stm

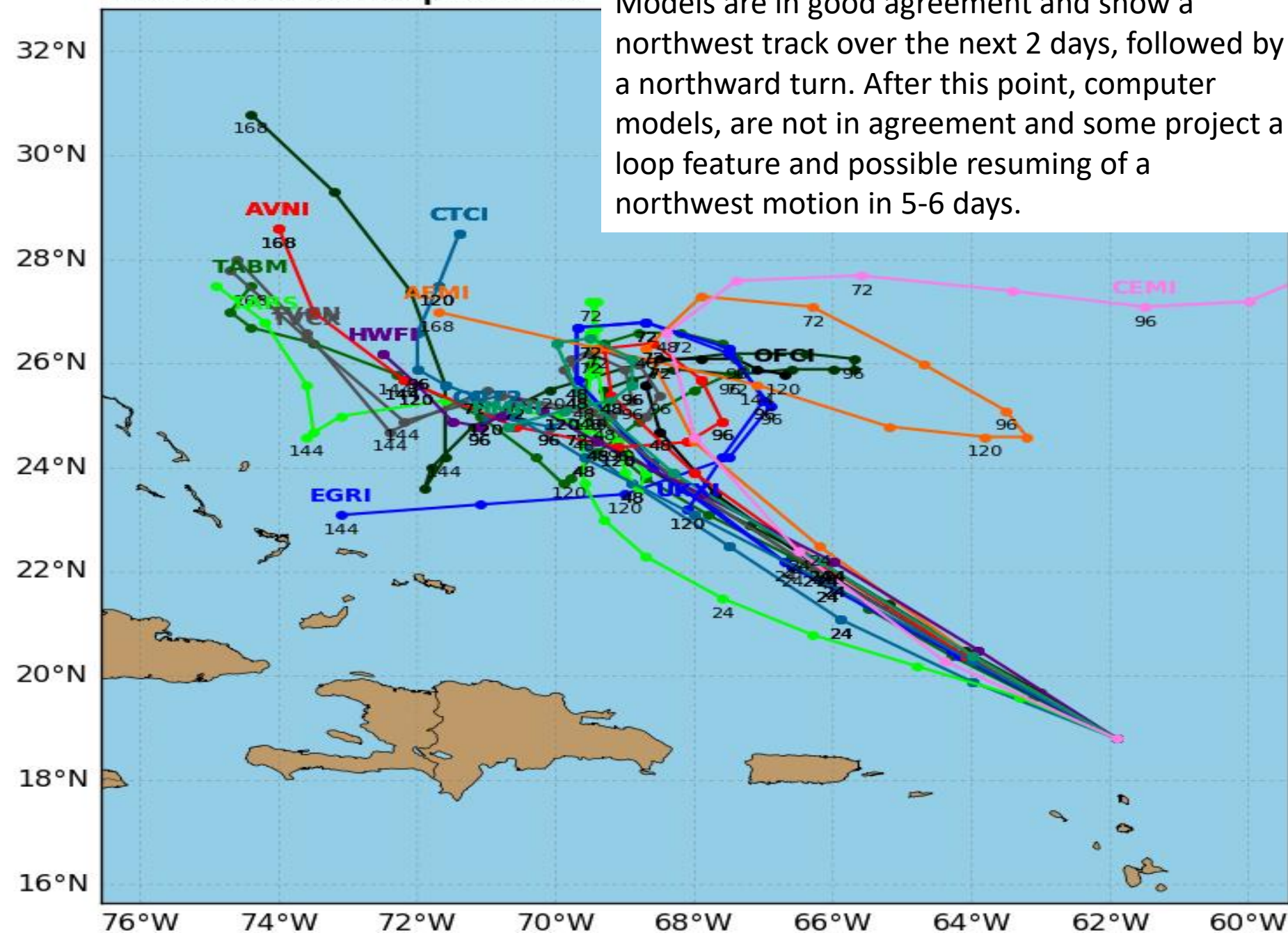
Current wind extent:

Hurricane Trop Stm

Hurricane JOSE Model Track Guidance

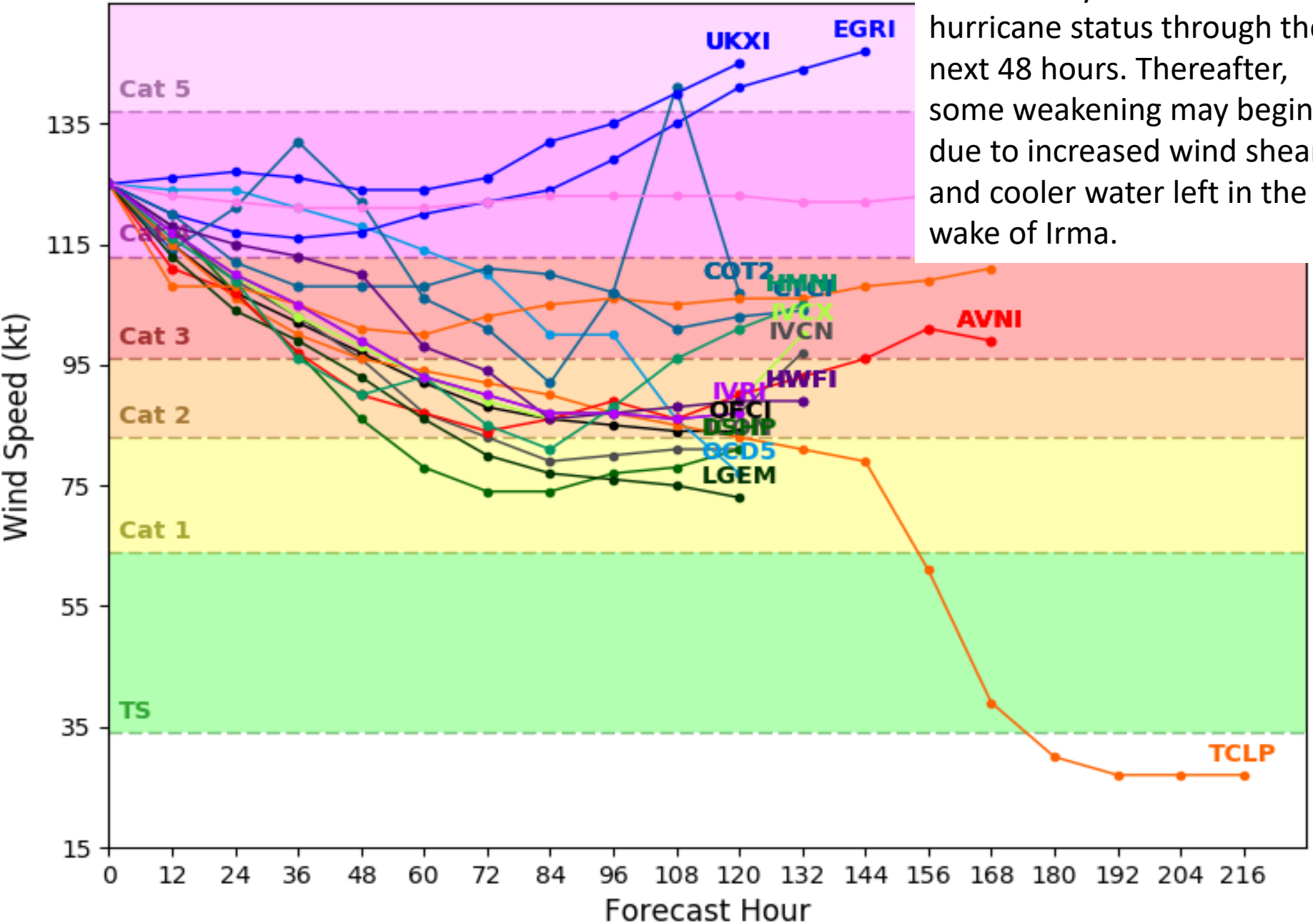
Initialized at 18z Sep 09 2017

Models are in good agreement and show a northwest track over the next 2 days, followed by a northward turn. After this point, computer models, are not in agreement and some project a loop feature and possible resuming of a northwest motion in 5-6 days.



Hurricane JOSE Model Intensity Guidance

Initialized at 18z Sep 09 2017



Jose is likely to maintain major hurricane status through the next 48 hours. Thereafter, some weakening may begin due to increased wind shear and cooler water left in the wake of Irma.



Five-Day Graphical Tropical Weather Outlook

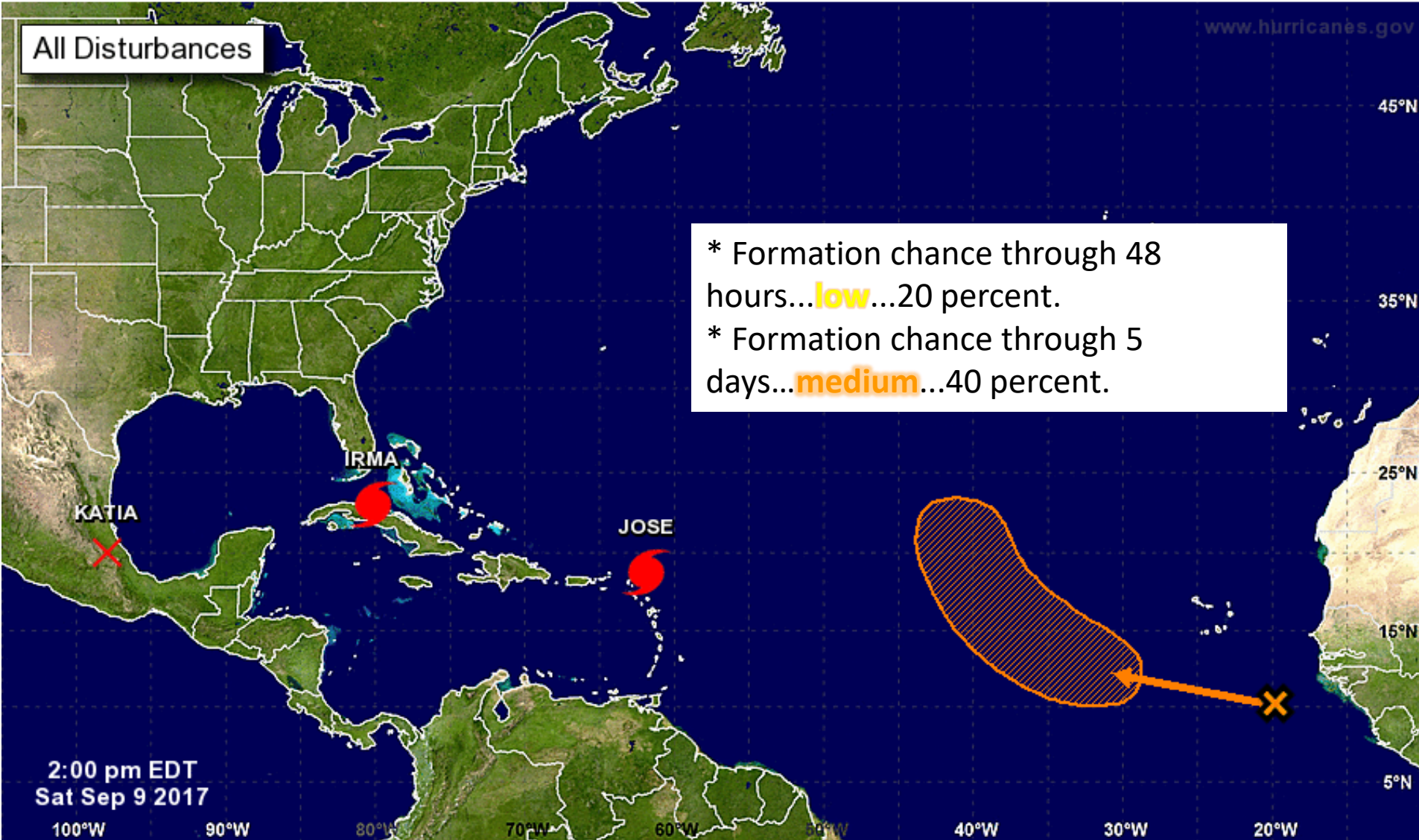
National Hurricane Center Miami, Florida



www.hurricanes.gov

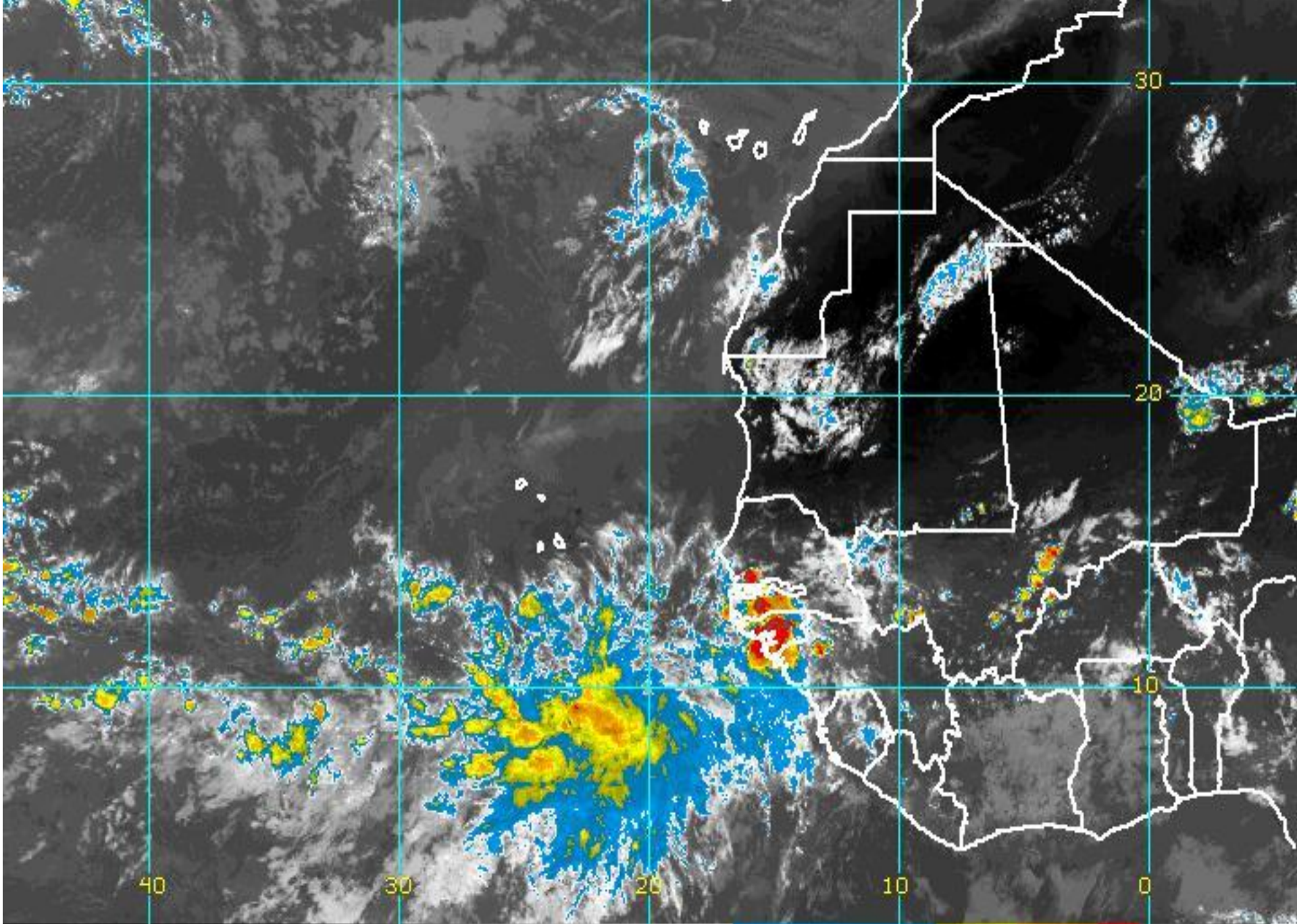
All Disturbances

* Formation chance through 48 hours...**low**...20 percent.
* Formation chance through 5 days...**medium**...40 percent.



2:00 pm EDT
Sat Sep 9 2017

Current Disturbances and Five-Day Cyclone Formation Chance: < 40% 40-60% > 60%
Tropical or Sub-Tropical Cyclone: Depression Storm Hurricane
 Post-Tropical Cyclone Remnants



Key Messages

- Irma is expected bring life-threatening wind and storm surge to the Florida Keys and southwestern Florida as an extremely dangerous major hurricane tonight through Saturday.
- Preparations in southwest Florida should be completed within the next few hours, as tropical-storm-force winds are expected to begin tonight.
- The threat of catastrophic storm surge flooding is high along the West coast of Florida, where up to 15 feet of inundation above ground level is expected.
- Irma will bring wind impacts to much of Florida regardless of the exact track of the center.
- Irma is expected to produce very heavy rain and inland flooding.
- Significant river flooding is possible.

Summary

- At 5pm EDT Saturday, Hurricane Irma was located about 170 miles south of Miami, or about 115 miles southeast of Key West.
- Maximum sustained winds are near 125 mph with higher gusts, making Irma a category 3 storm on the Saffir-Simpson Hurricane Wind scale.
- Irma is forecast to intensify over the warm waters of the Florida Straits and remain a powerful hurricane until landfall.
- Irma is moving toward the west-northwest near 9 mph, but a northwest motion is expected to begin tonight with a turn toward the north-northwest on Sunday.
- On the forecast track, the core of the hurricane will approach the Florida Keys and Southwest Florida early Sunday morning through afternoon.
- As a reminder, do not focus on the center line of the forecast cone. The center of Irma still has the potential to move anywhere within the cone of uncertainty.
- Tropical Storm force winds extend out 195 miles from the center, and hurricane force 70 miles, meaning a large portion of the Peninsula and Big Bend may experience hurricane force winds and much of the state will at least feel tropical storm conditions.
- At 5pm EDT Saturday, Hurricane Jose was located 85 miles north-northeast of the Northern Leeward Islands, which is about 1,230 miles southeast of Miami, Florida.
- Maximum sustained winds are near 145 mph, which is a Category 4 on the Saffir-Simpson Hurricane Wind Scale.
- Little change in intensity is expected overnight, but gradual weakening should begin on Sunday.
- Jose is moving toward the northwest near 14 mph and this motion is expected to continue for the next couple of days.
- However, after 48 hours, the models are in good agreement showing Jose slowing to a crawl and executing a slow loop well to the east of the Bahamas.
- Hurricane Katia made landfall in eastern Mexico Friday night and dissipated Saturday morning.
- Shower and thunderstorm activity associated with a tropical wave located several hundred miles south of the Cabo Verde Islands has become somewhat better organized today.
- Environmental conditions are expected to support at least some additional development, and there is a 40% chance that a tropical depression could form in a few days while the system moves generally northwestward over the eastern Atlantic Ocean.

Florida Outlook

- Nearly all of the Florida Peninsula and Florida Panhandle could feel impacts from this system regardless of the eventual path.
- **Hurricane Warnings** are in effect for all counties in the Peninsula and Florida Big Bend.
- **Tropical Storm Warnings** are in effect for the eastern Florida Panhandle east of Destin.
- Wind impacts to South Florida and the Keys have already started, with winds increasing in Central Florida early tomorrow morning. Hurricane force winds could arrive in Southeast Florida early tomorrow morning.
- **Storm Surge Warnings** are in effect for the entire East Coast and on the West Coast south of the Suwannee River. This includes all of the Florida Keys. **Storm Surge Watches** are in effect for Apalachee Bay.
- Rainfall amounts could reach as high as 10-15" with isolated higher totals of 20" possible in the Peninsula. Lesser amounts of 4-9" are expected in the Big Bend.
- Flash Flood Watches are in effect for the entire Peninsula and Big Bend.
- Isolated tornadoes are possible in the outer bands of Irma and will spread northward tonight and tomorrow. A **Tornado Watch** is in effect for South Florida.
- Hurricane Jose does not pose a threat to Florida within the next 5-7 days, but should be monitored.

Another briefing packet will be issued Sunday morning. For more information, visit the NHC website at www.hurricanes.gov.



TROPICAL UPDATE

Created by:

Amy Godsey, Chief State Meteorologist

amy.godsey@em.myflorida.com

State Meteorological Support Unit

Florida Division of Emergency Management

Users wishing to subscribe (approval pending) to this distribution list, register at
https://public.govdelivery.com/accounts/FLDEM/subscriber/new?topic_id=SERT_Met_Tropics.

Other reports available for subscription are available at

<https://public.govdelivery.com/accounts/FLDEM/subscriber/new?preferences=true>