



TROPICAL UPDATE

5 AM EDT

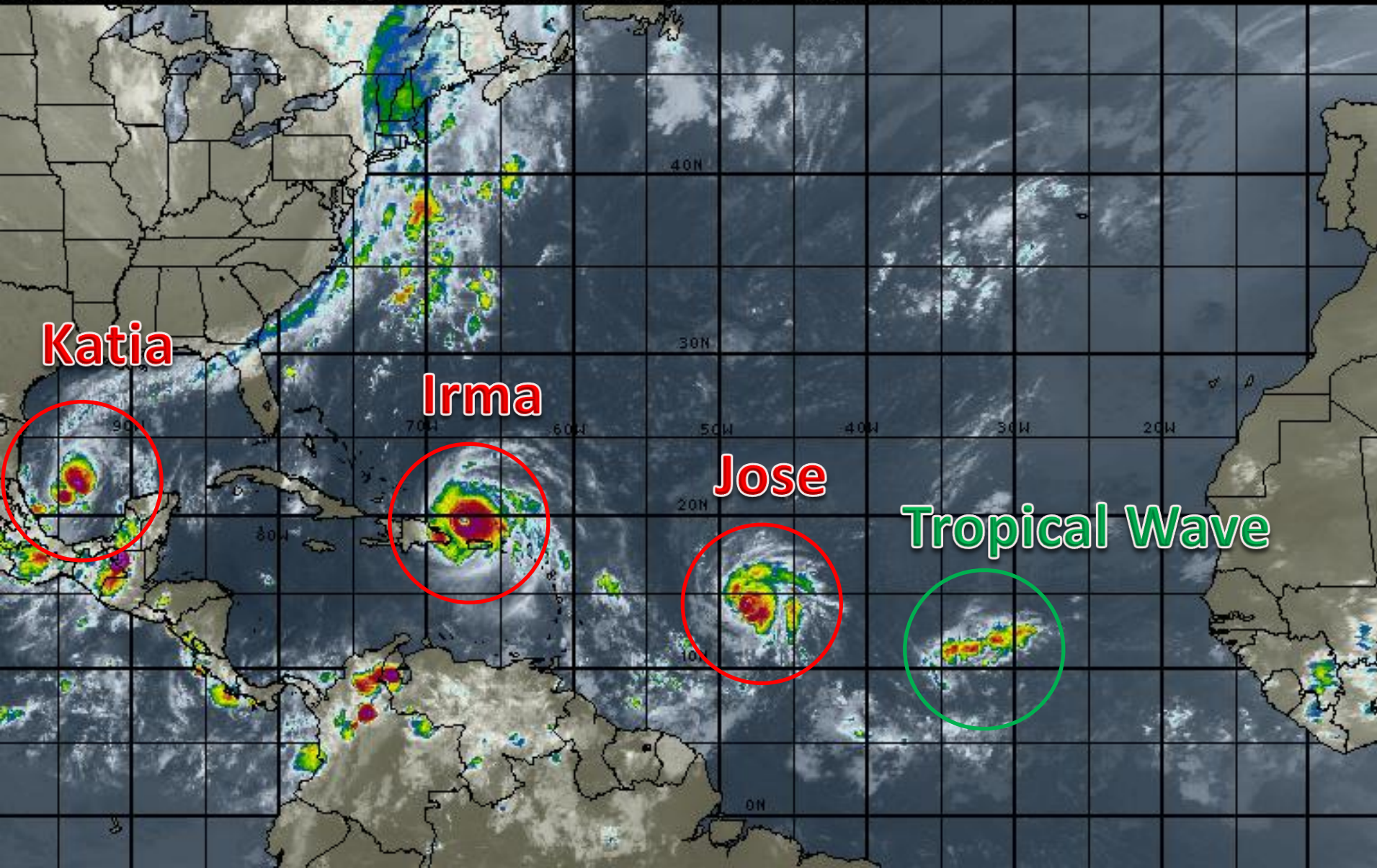
Thursday, September 7, 2017

**Hurricane Irma, Hurricane Jose, and Hurricane
Katia**

This update is intended for government and emergency response officials, and is provided for informational and situational awareness purposes only. Forecast conditions are subject to change based on a variety of environmental factors. For additional information, or for any life safety concerns with an active weather event please contact your County Emergency Management or Public Safety Office, local National Weather Service forecast office or visit the National Hurricane Center website at www.nhc.noaa.gov.

Atlantic Basin Satellite Image

06:00 07-SEP-2017 GMT Copyright © 1998-2016 MSI Corporation <http://www.usi.com>



Hurricane Irma

5 AM EDT Thu Sep 07 2017

Position 20.0 N 68.3 W

Maximum Winds 180 mph

Gusts 220 mph

Movement WNW at 17 mph

Minimum Pressure 921 mb (27.19 inches)

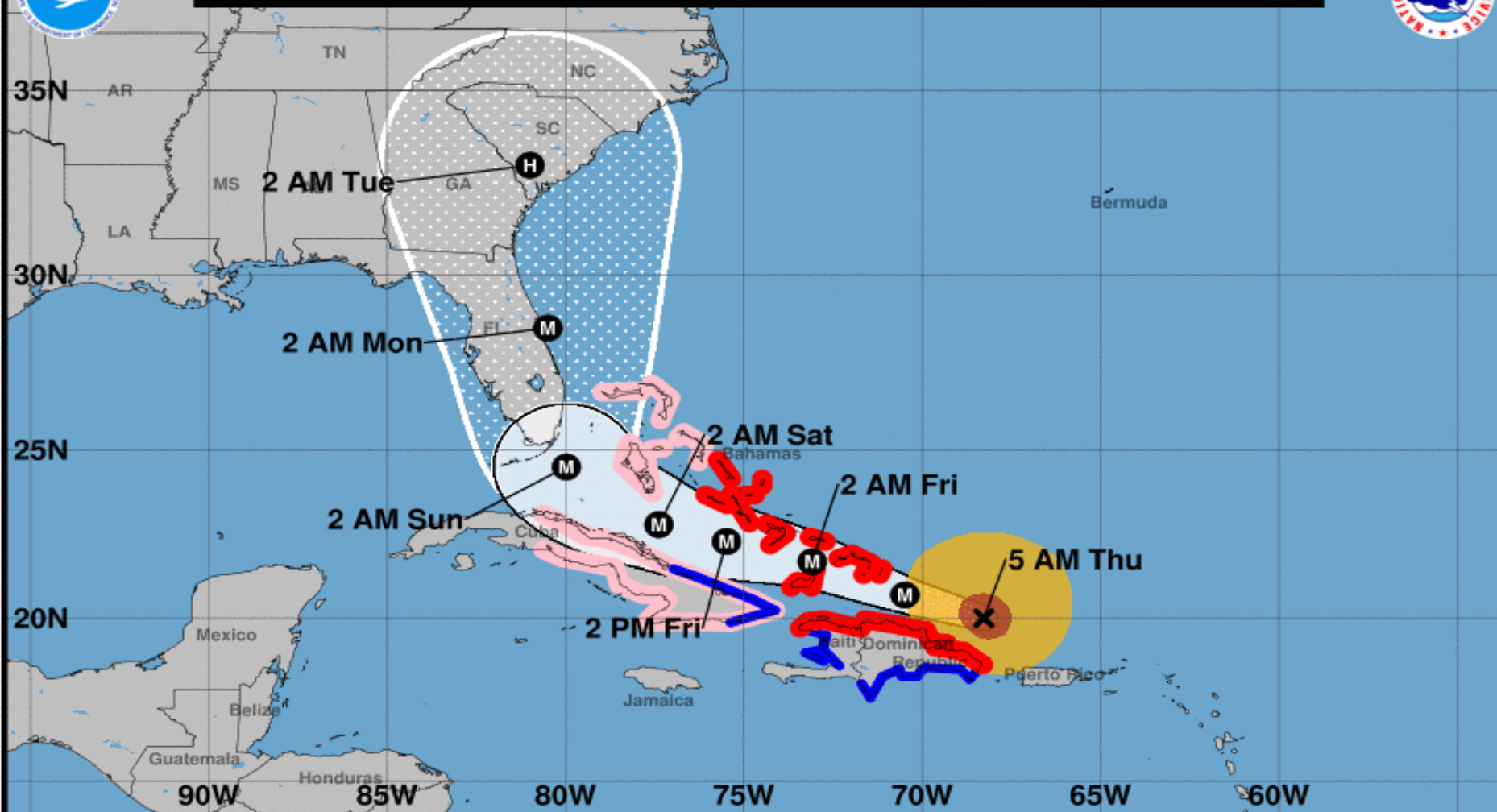
Blue Marble basemap imagery courtesy NASA

Satellite 9:57 AM UTC
5:57 AM EDT





Note: The cone contains the probable path of the storm center but does not show the size of the storm. Hazardous conditions can occur outside of the cone.



Hurricane Irma

Thursday September 07, 2017

5 AM AST Advisory 33

NWS National Hurricane Center

Current information: x

Center location 20.0 N 68.3 W

Maximum sustained wind 180 mph

Movement WNW at 17 mph

Forecast positions:

● Tropical Cyclone ○ Post/Potential TC

Sustained winds: D < 39 mph

S 39-73 mph H 74-110 mph M > 110 mph

Potential track area:

Day 1-3 Day 4-5

Watches:

Hurricane Trop Stm

Warnings:

Hurricane Trop Stm

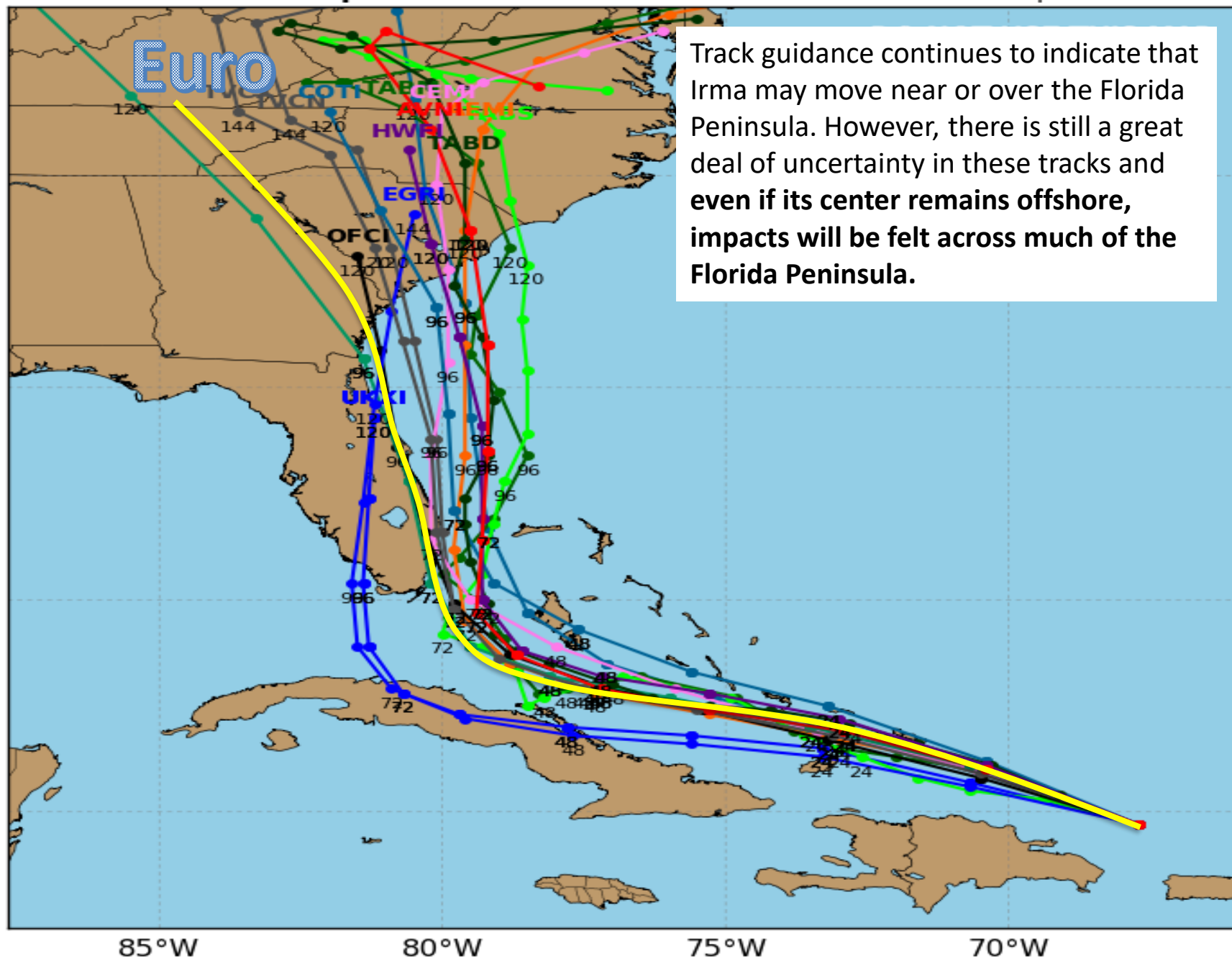
Current wind extent:

Hurricane Trop Stm

Hurricane IRMA Model Track Guidance

Initialized at 06z Sep 07 2017

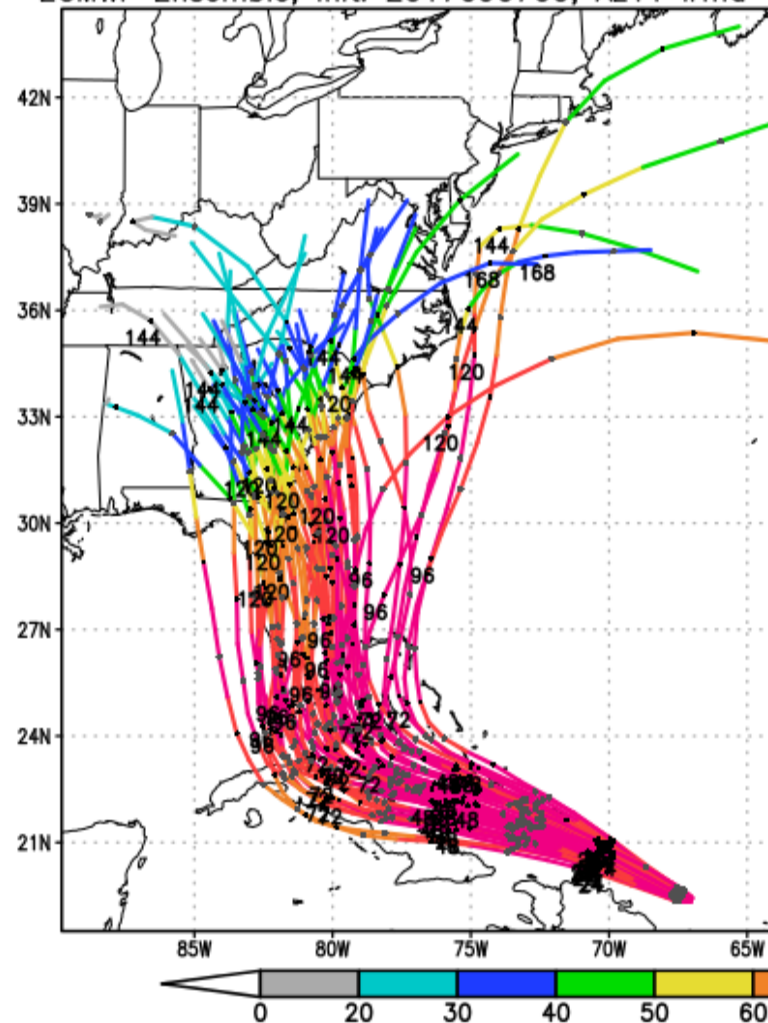
Levi Cowan - tropicaltidbits.com



ECMWF Ensemble, init: 2017090700, AL11 Irma

color = max wind (kt)

Weathernerds.org

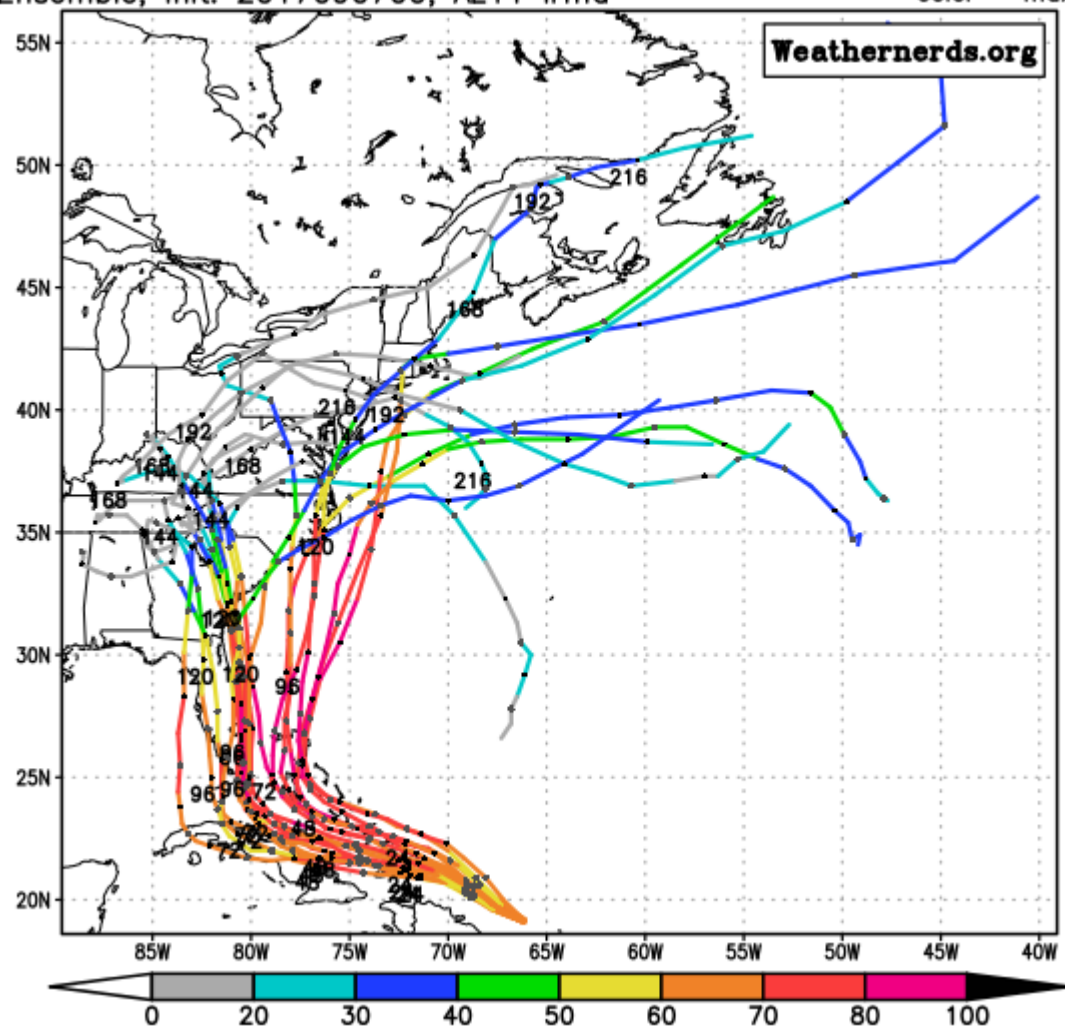


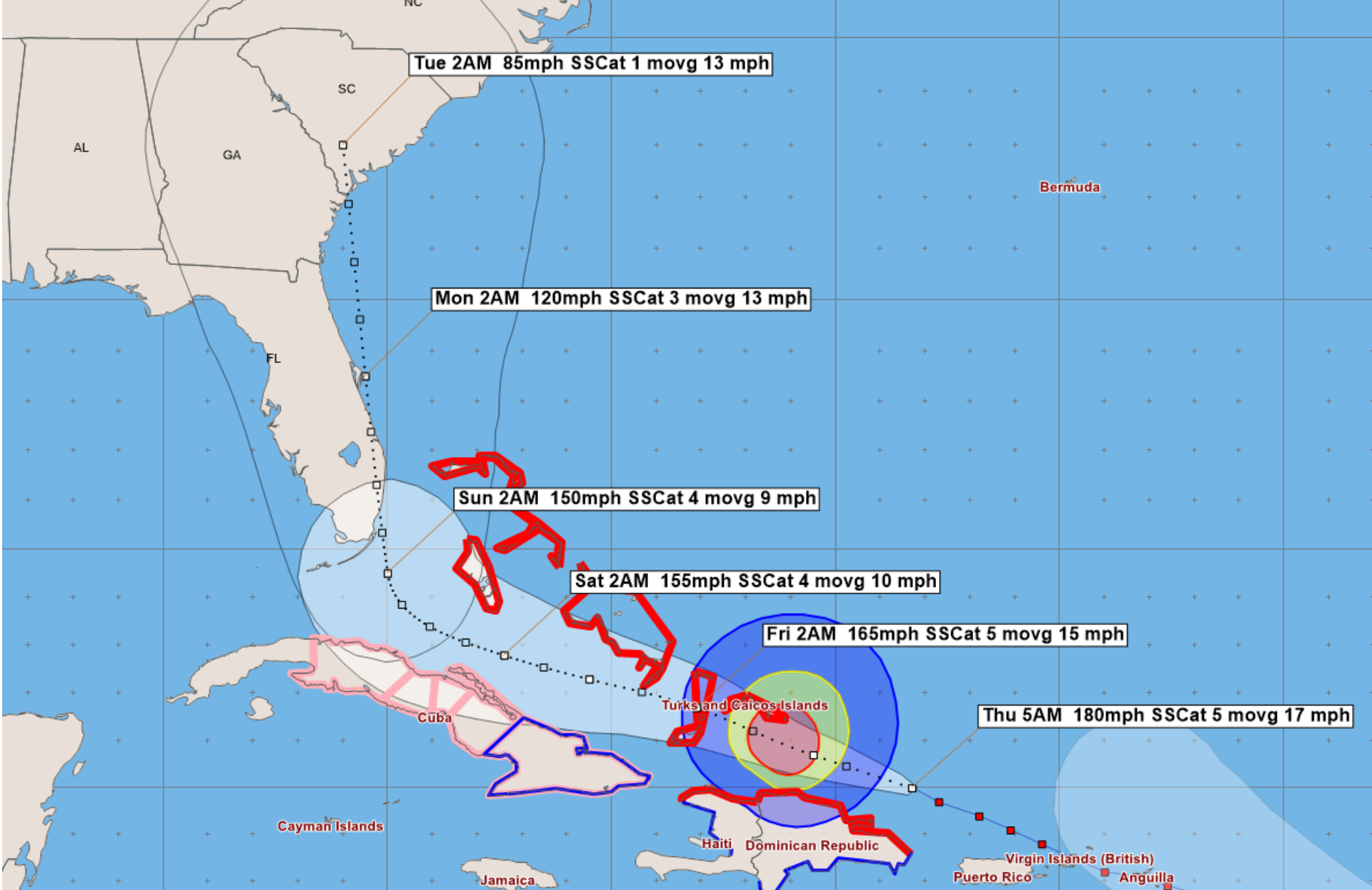
Still can't rule out a West coast impact, but the majority of solutions is for the Peninsula or East Coast

GFS Ensemble, init: 2017090700, AL11 Irma

color = max

Weathernerds.org





Hurricane Irma - Thursday, September 7, 2017 5 PM EDT (Fcst Hr 12) Advisory #33

Center Location: 20.9 N 71.2 W Maximum Sustained Winds: 175 mph (Cat 5) Movement: 16 mph WNW

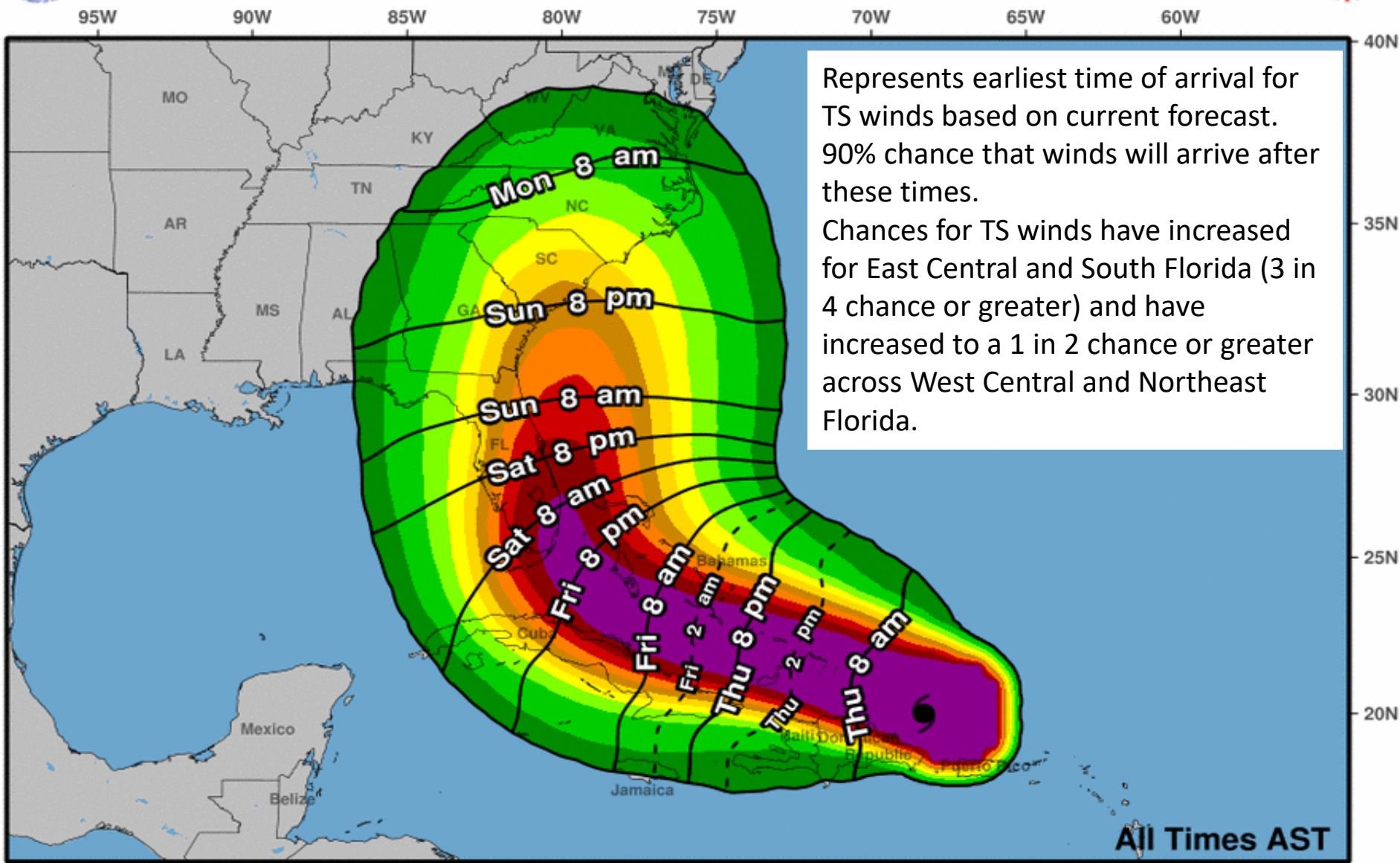
☐ forecast positions
 Potential Track Area: day 1-3 day 4-5
 Surface Wind Field: at current location

Watches: hurricane tropical storm
 Warnings: hurricane tropical storm

Sustained Wind Speeds: tropical storm >= 34kt/39mph strong tropical storm >= 50kt/58mph hurricane >= 64kt/74mph



Earliest Reasonable Arrival Time of Tropical-Storm-Force Winds



Represents earliest time of arrival for TS winds based on current forecast. 90% chance that winds will arrive after these times.

Chances for TS winds have increased for East Central and South Florida (3 in 4 chance or greater) and have increased to a 1 in 2 chance or greater across West Central and Northeast Florida.

Hurricane Irma
Thu. Sep. 7, 2017 5 am AST
Advisory 33

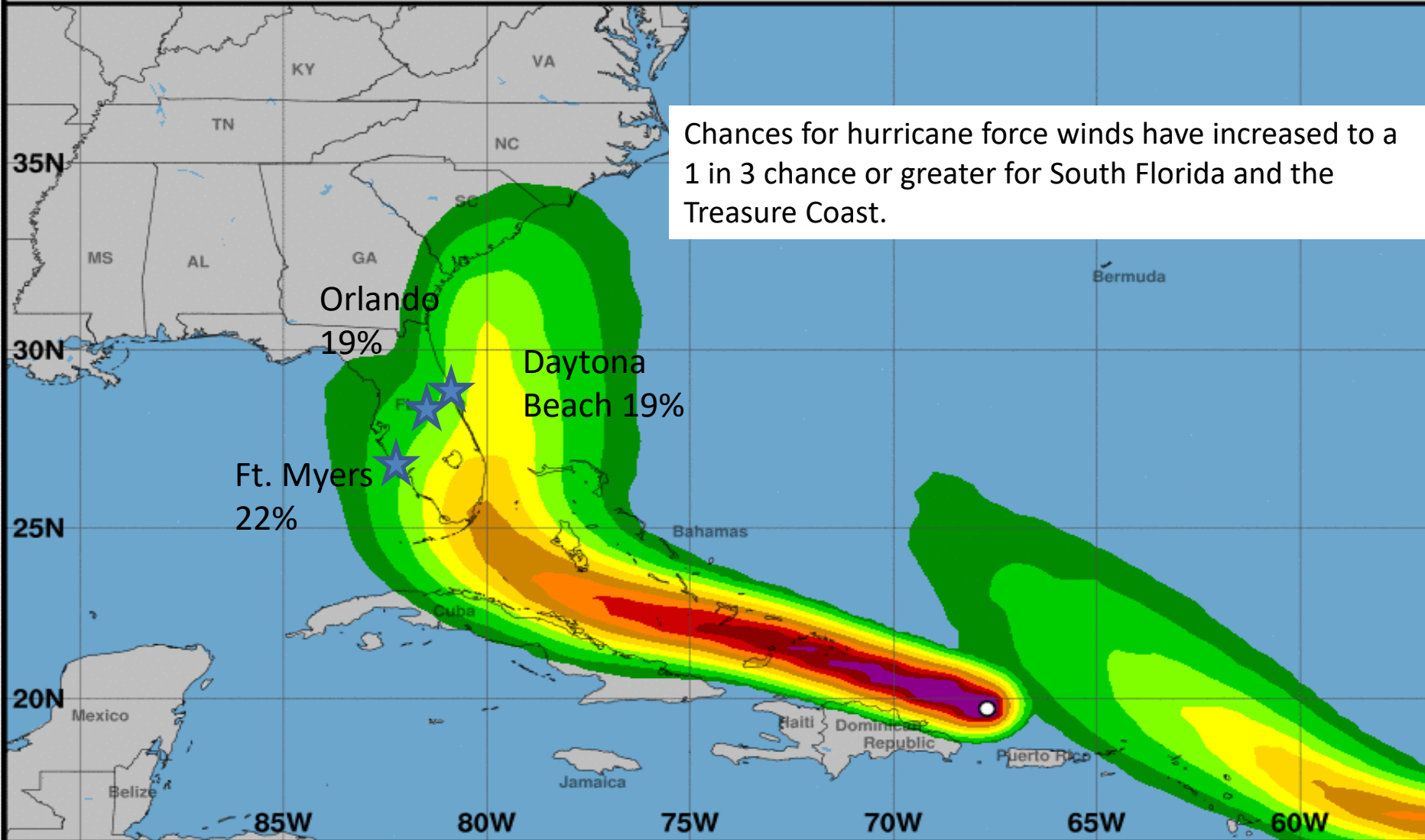
Storm Location & Wind Speed (knots)
○ <34 ◐ 34-63 ● ≥64

Five-day chance of receiving sustained 34+ knot (39+ mph) winds
5 10 20 30 40 50 60 70 80 90 100 %



Hurricane-Force Wind Speed Probabilities

For the 120 hours (5.00 days) from 2 AM AST THU SEP 07 to 2 AM AST TUE SEP 12

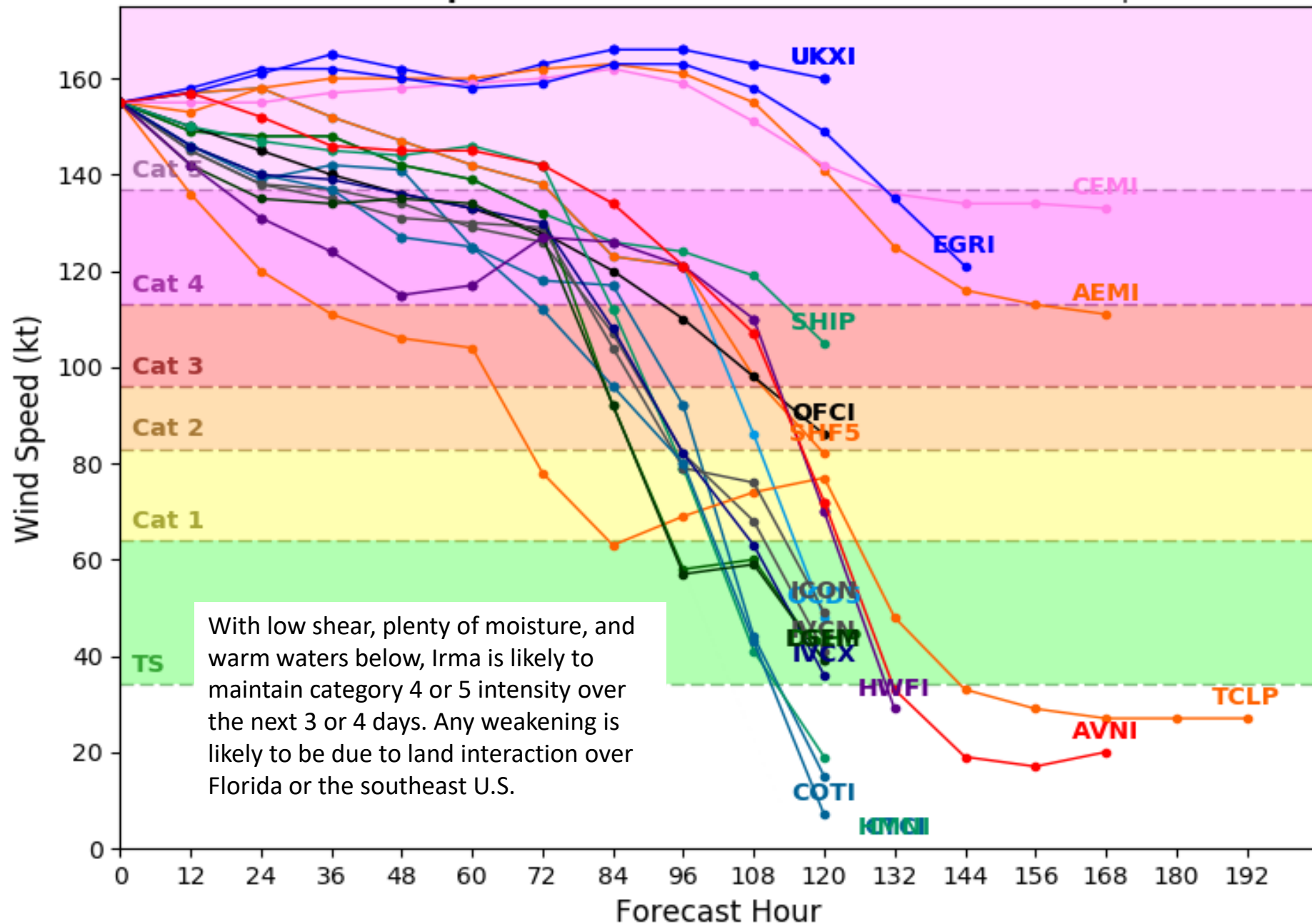


Probability of hurricane-force winds (1-minute average ≥ 74 mph) from all tropical cyclones

○ indicates Hurricane Irma center location at 2 AM AST THU SEP 07, 2017 (Forecast/Advisory #33)



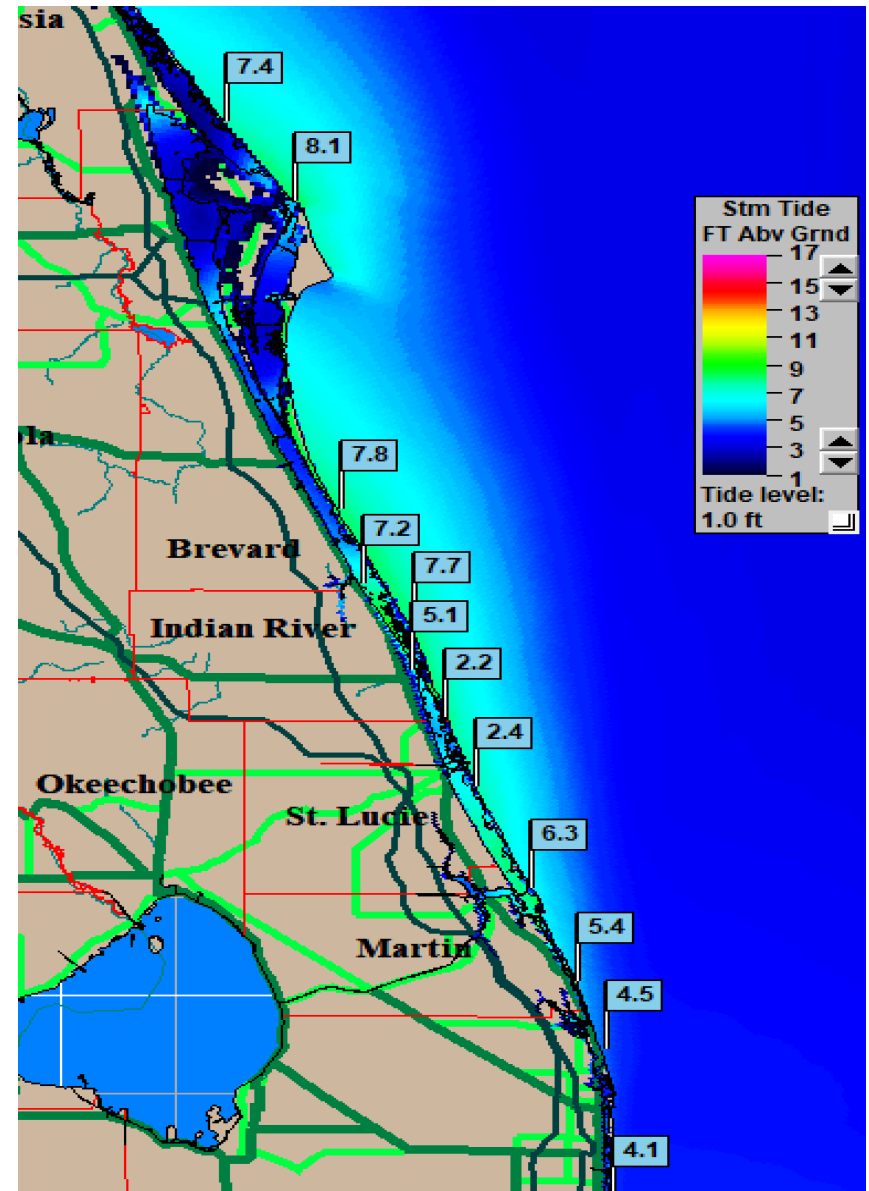
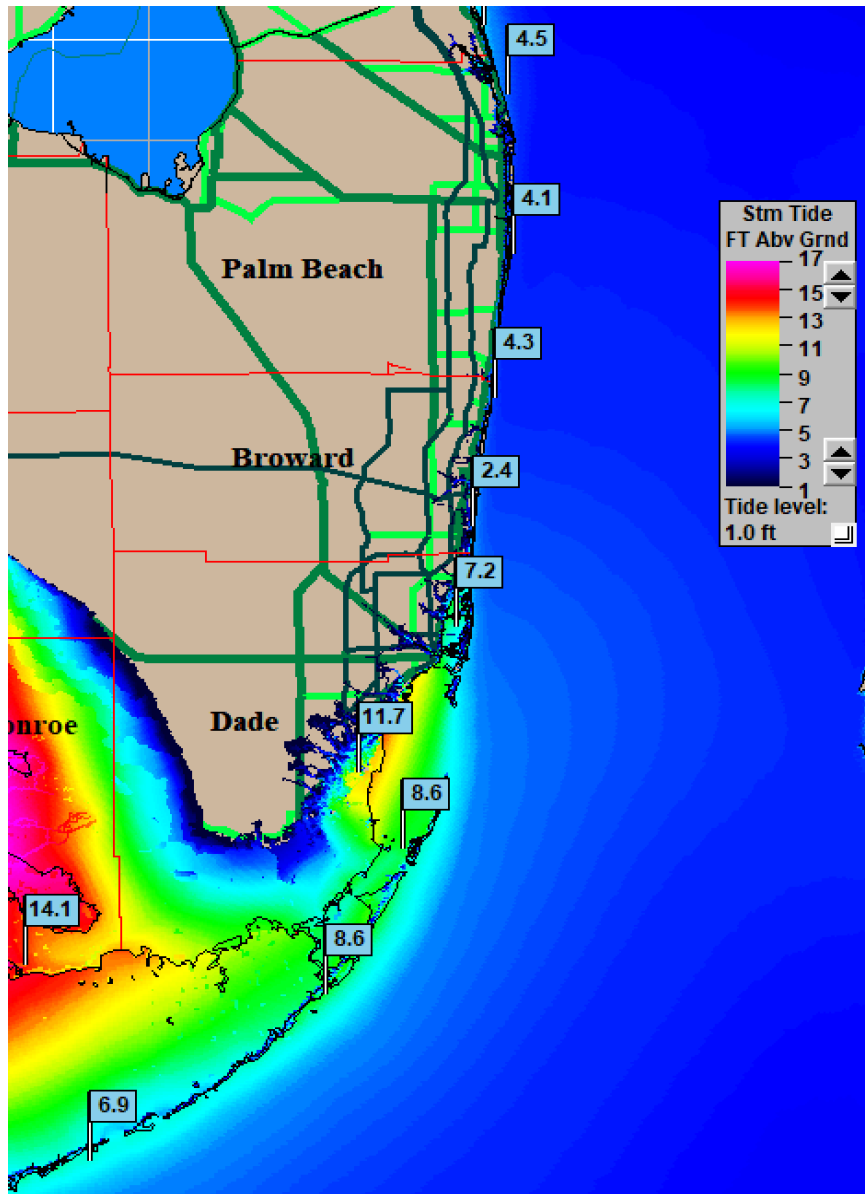
Levi Cowan - tropicaltidbits.com



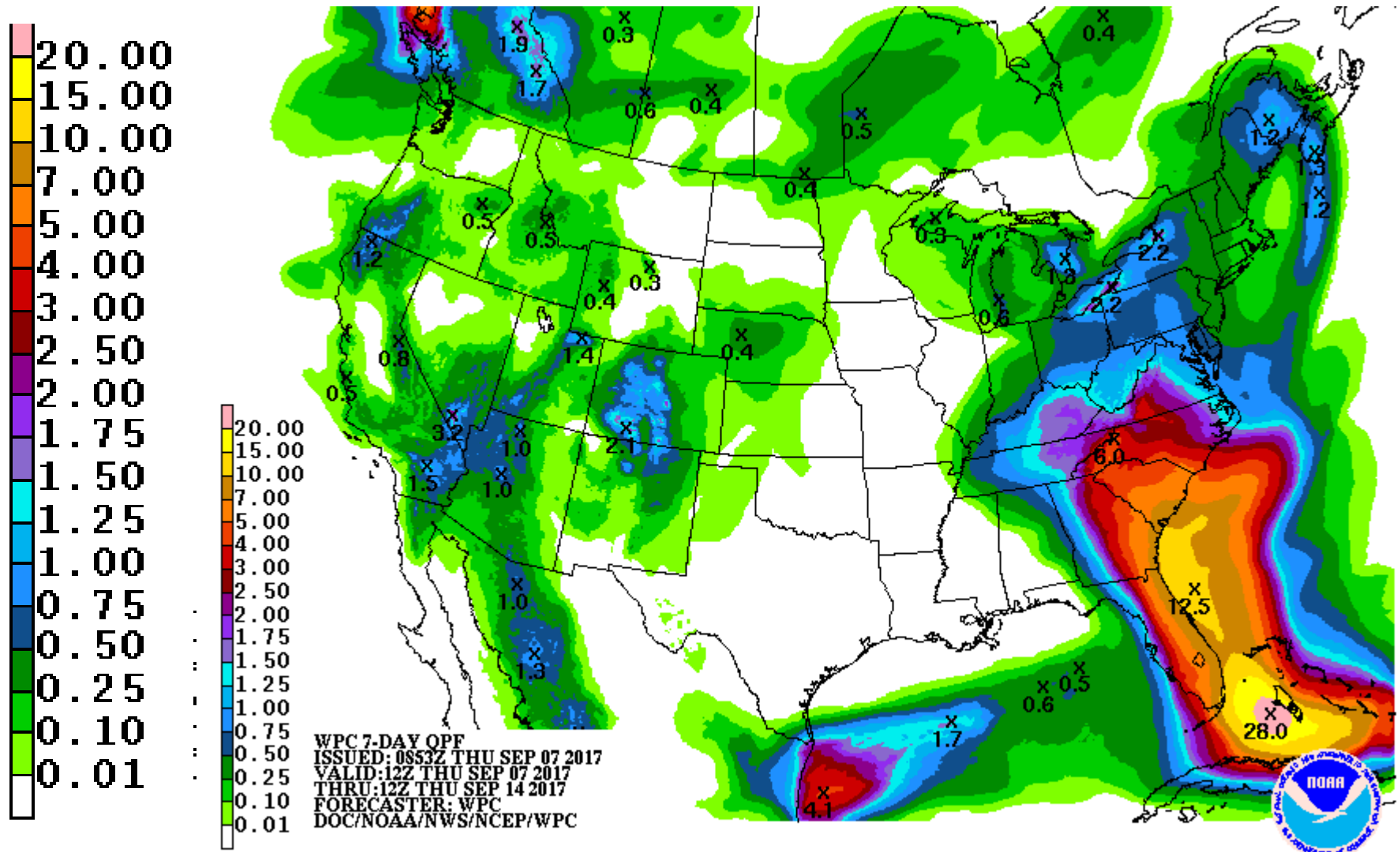
SLOSH maximum storm surge estimates

Cat 4 moving N @10mph. Zoomable map

<http://noaa.maps.arcgis.com/apps/MapSeries/index.html?appid=d9ed7904dbec441a9c4dd7b277935fad&entry=1>



5 Day Cumulative Rainfall Forecast (does not account for higher totals)



Hurricane Jose

5 AM EDT 11 Sep 2017

Position 14.3 N 79.1 W

Maximum Winds 90 mph

Gusts 115 mph

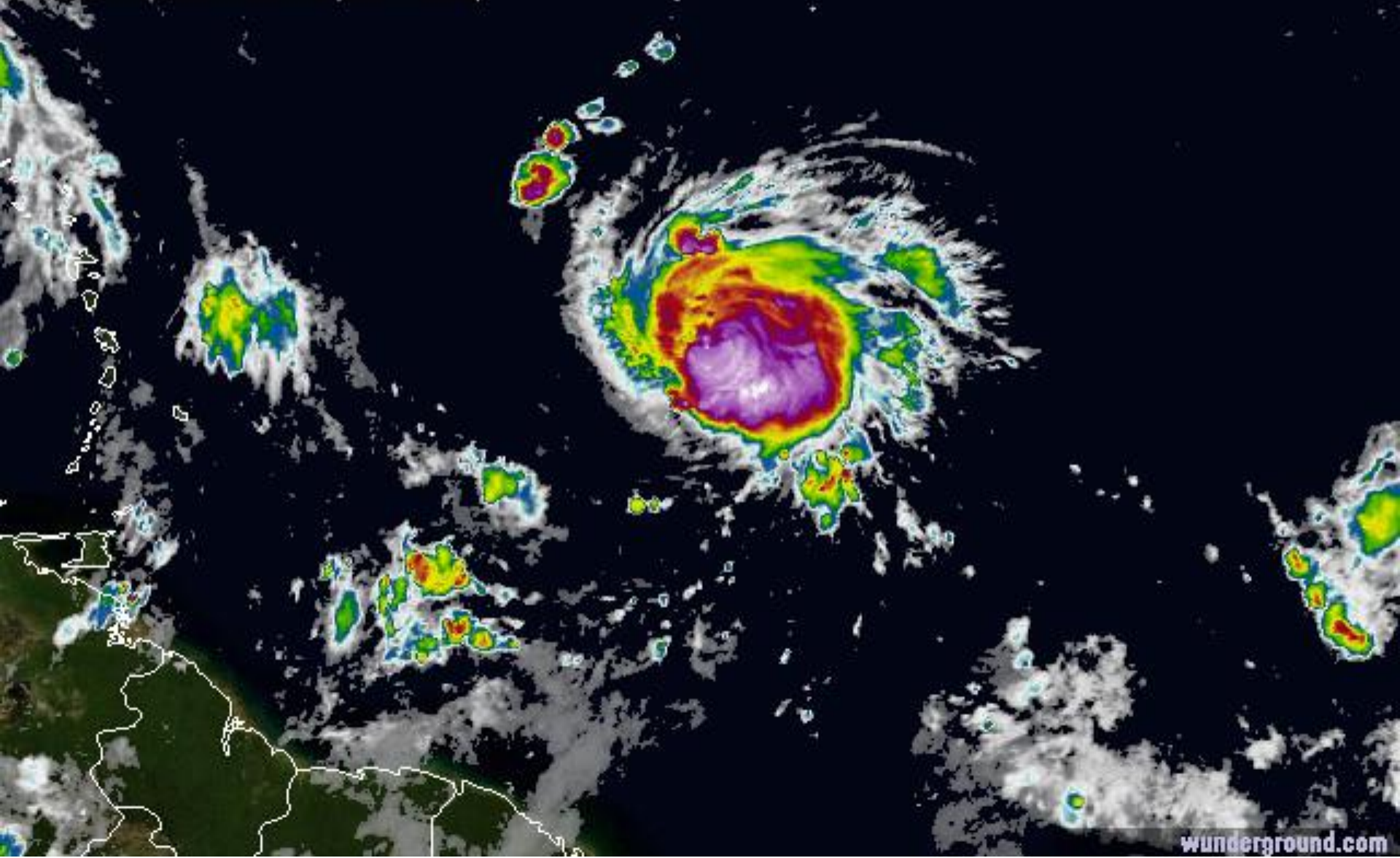
Movement WNW at 18 mph

Minimum Pressure 986 mb (29.11 inches)

Blue Marble basemap imagery courtesy NASA

Tropical Storm Jose Satellite Imagery

Satellite 8:57 AM UTC
4:57 AM EDT

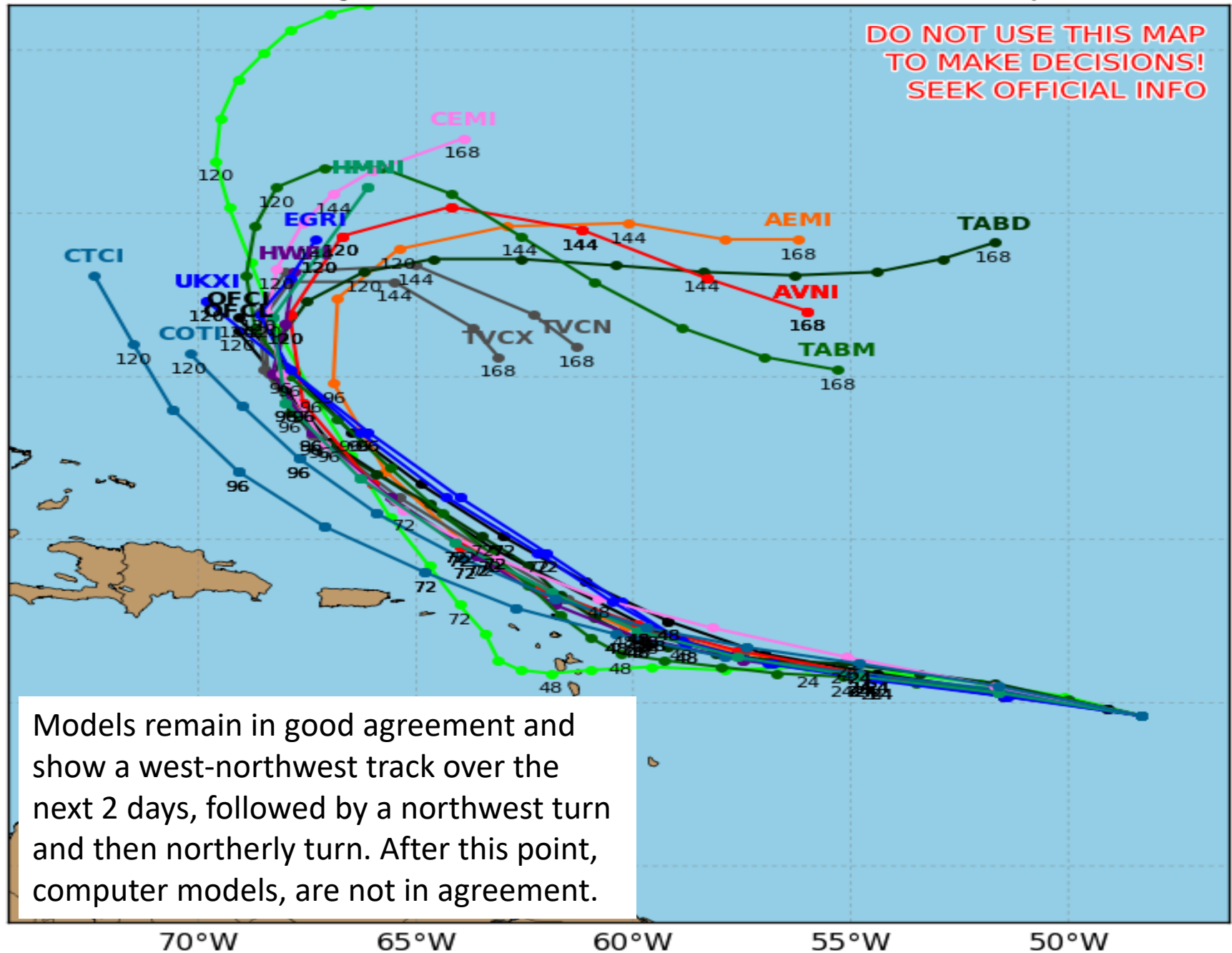


Hurricane JOSE Model Track Guidance

Initialized at 06z Sep 07 2017

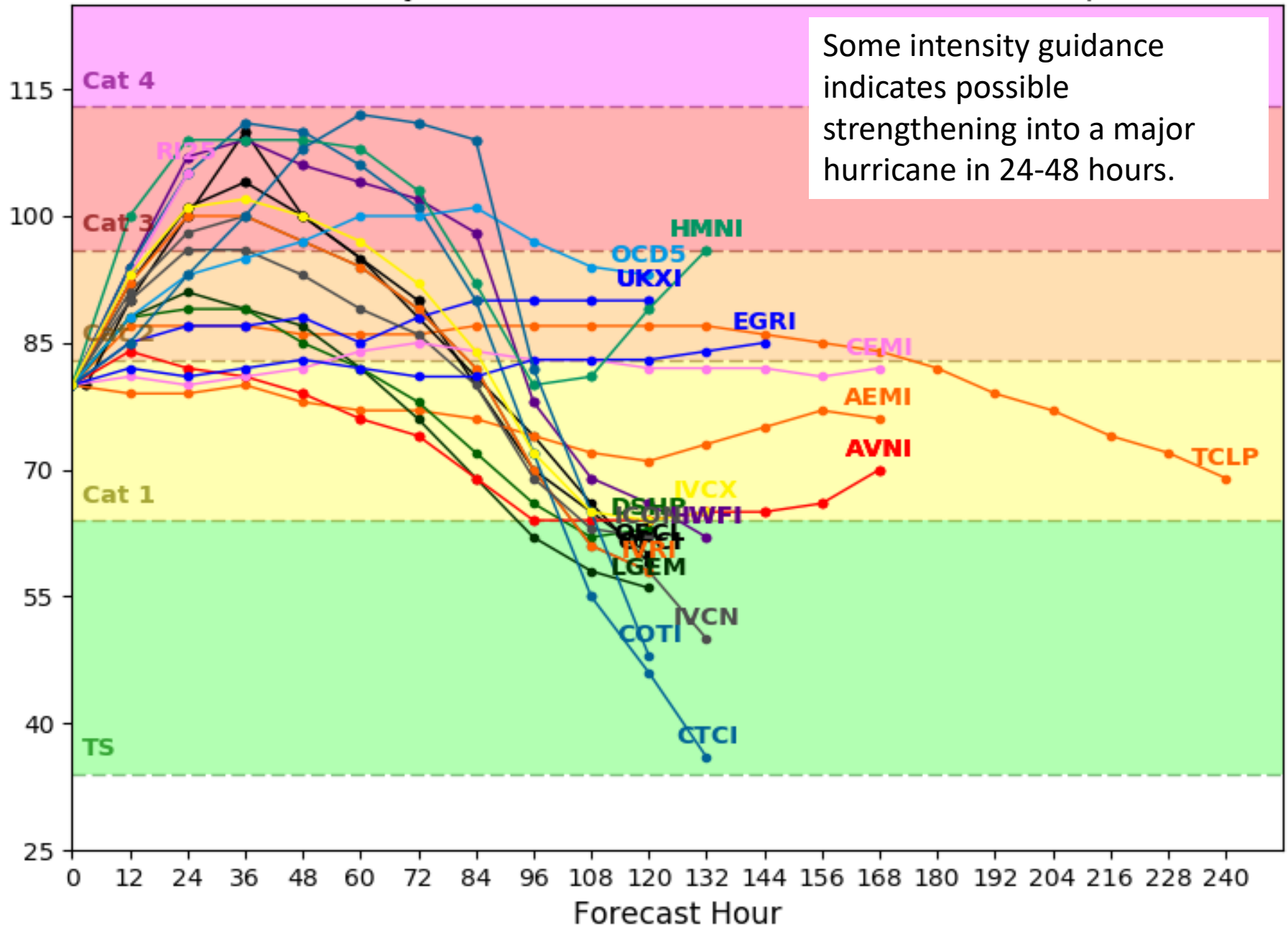
Levi Cowan - tropicaltidbits.com

**DO NOT USE THIS MAP
TO MAKE DECISIONS!
SEEK OFFICIAL INFO**



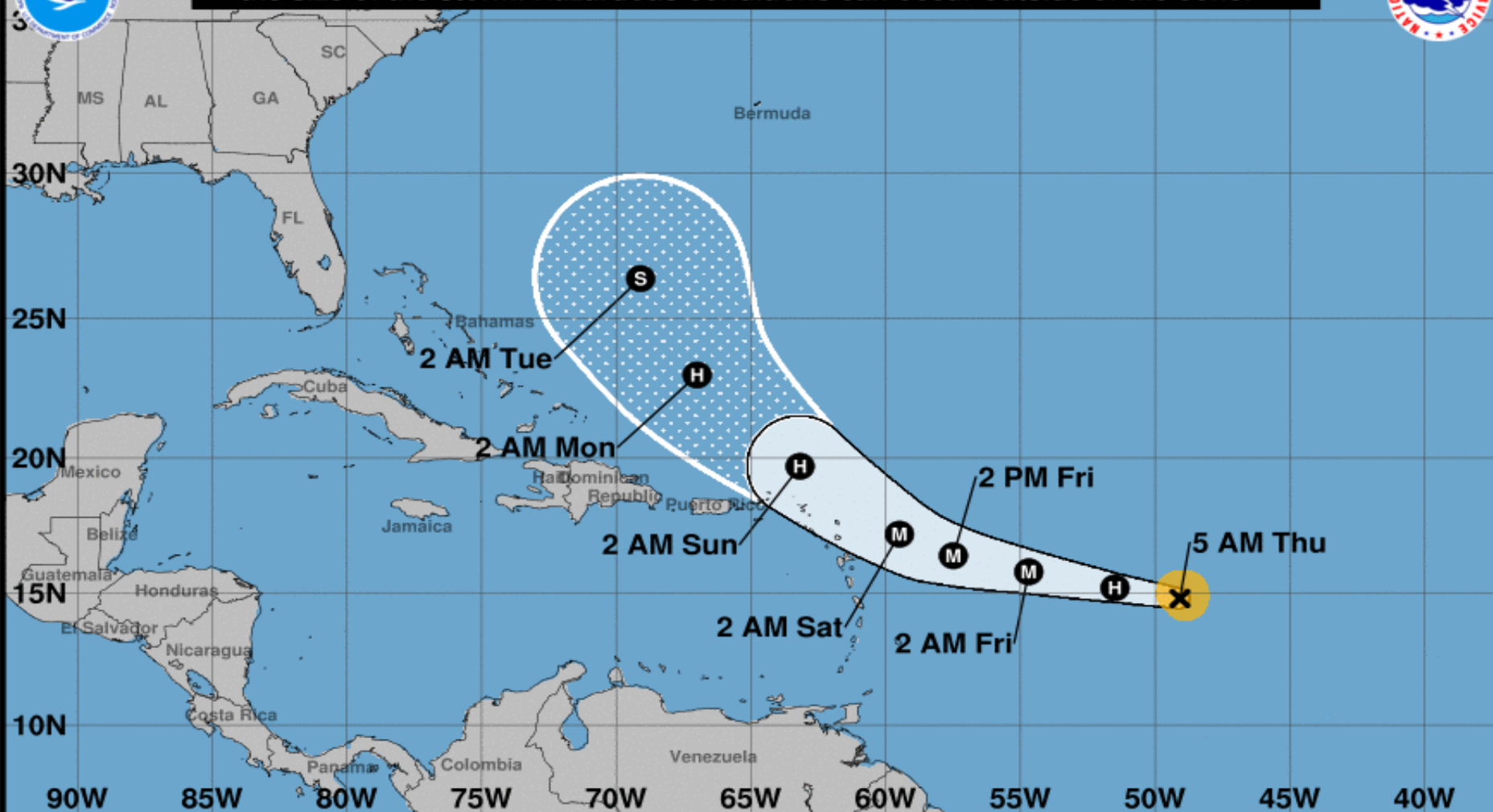
Levi Cowan - tropicaltidbits.com

Wind Speed (kt)





Note: The cone contains the probable path of the storm center but does not show the size of the storm. Hazardous conditions can occur outside of the cone.



Hurricane Jose

Thursday September 07, 2017

5 AM AST Advisory 8

NWS National Hurricane Center

Current information: X

Center location 14.8 N 49.1 W

Maximum sustained wind 90 mph

Movement WNW at 18 mph

Forecast positions:

● Tropical Cyclone ○ Post/Potential TC

Sustained winds: D < 39 mph

S 39-73 mph H 74-110 mph M > 110 mph

Potential track area:

Day 1-3 Day 4-5

Watches:

Hurricane Trop Stm

Warnings:

Hurricane Trop Stm

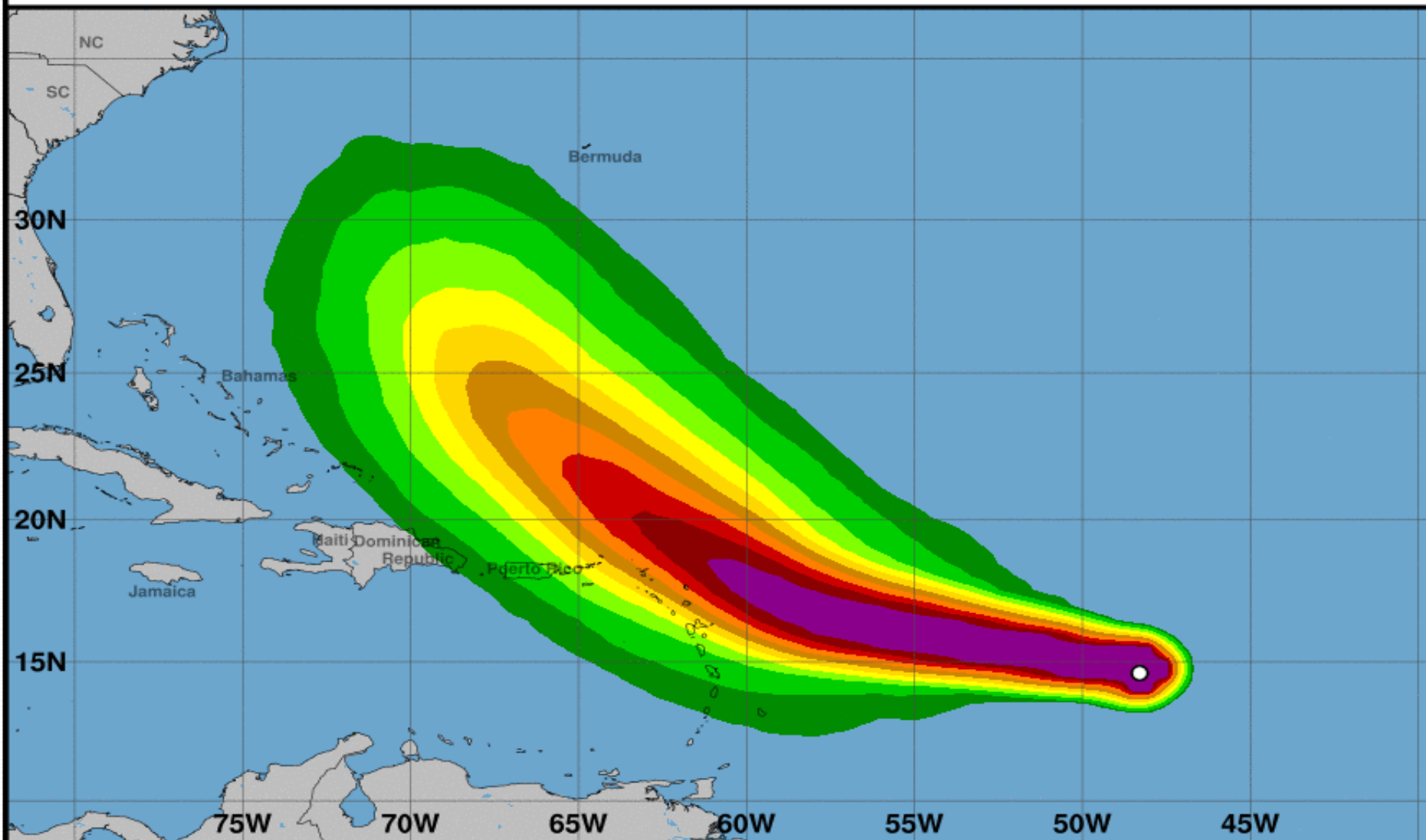
Current wind extent:

Hurricane Trop Stm



Tropical-Storm-Force Wind Speed Probabilities (Preliminary)

For the 120 hours (5.0 days) from 2 AM AST THU SEP 07 to 2 AM AST TUE SEP 12



Probability of tropical-storm-force winds (1-minute average ≥ 39 mph) from all tropical cyclones
○ indicates Hurricane Jose center location at 2 AM AST THU SEP 07, 2017 (Forecast/Advisory #8)



Hurricane Katia

5 AM EDT Thu Sep 07 2017

Position 21.5°N 94.5°W

Maximum Winds 80 mph

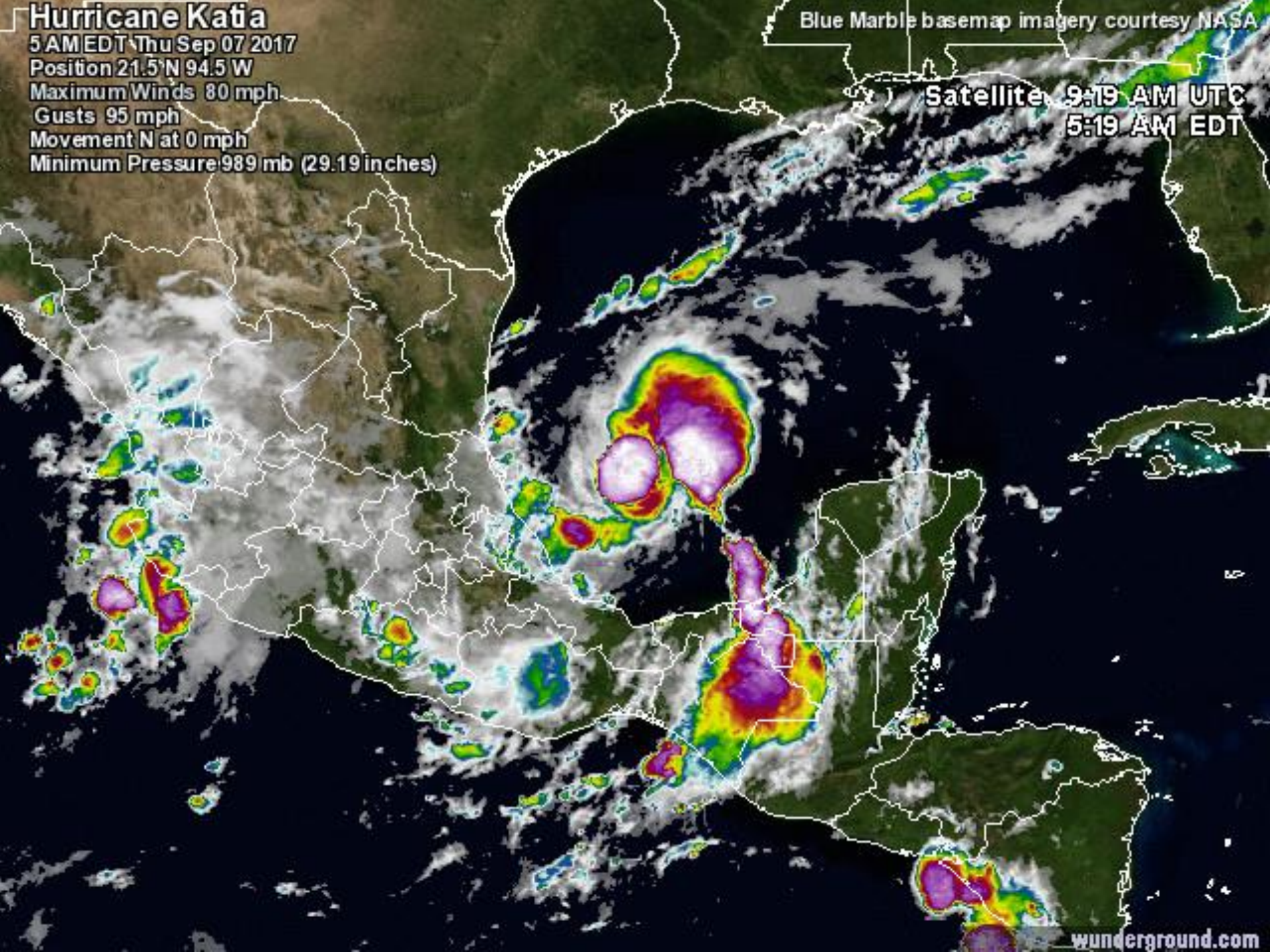
Gusts 95 mph

Movement N at 0 mph

Minimum Pressure 989 mb (29.19 inches)

Blue Marble basemap imagery courtesy NASA

Satellite 9:19 AM UTC
5:19 AM EDT





Note: The cone contains the probable path of the storm center but does not show the size of the storm. Hazardous conditions can occur outside of the cone.



Hurricane Katia

Thursday September 07, 2017

4 AM CDT Advisory 7

NWS National Hurricane Center

Current information: x

Center location 21.5 N 94.5 W

Maximum sustained wind 80 mph

Movement: Stationary

Forecast positions:

● Tropical Cyclone ○ Post/Potential TC

Sustained winds: D < 39 mph

S 39-73 mph H 74-110 mph M > 110 mph

Potential track area:

Day 1-3 Day 4-5

Watches:

Hurricane Trop Stm

Warnings:

Hurricane Trop Stm

Current wind extent:

Hurricane Trop Stm

Summary

- At 5am EDT Thursday, Hurricane Irma was located about 90 miles north of the eastern tip of Hispaniola, or about 860 miles southeast of Miami.
 - Maximum sustained winds are near 180 mph with higher gusts, keeping Irma a category 5 storm on the Saffir-Simpson Hurricane Wind scale.
 - Some fluctuations in intensity are likely during the next day or two, but Irma is forecast to remain a powerful hurricane due to low wind shear and favorable sea-surface temperatures.
 - Irma continues moving quickly toward the west-northwest near 17 mph, and this general motion is expected to continue for the next couple of days along with a decrease in forward speed.
 - On the forecast track, the core of Irma will move north of Hispaniola today, across the Turks and Caicos Islands tonight and then between Cuba and the central Bahamas on Friday.
 - Irma is forecast to approach South Florida and the Florida Keys by Sunday while beginning a northward turn. .
 - Exactly when the turn occurs is still uncertain and would make a huge difference in the level of impact to portions of South and Central Florida.
 - As a reminder, do not focus on the center line of the forecast cone. The center of Irma still has the potential to move anywhere within the cone of uncertainty. Models have still not come into complete agreement and thus a west or east shift to the cone is still possible.
 - Even if the center eventually remains offshore, impacts could be felt along much of the Florida Peninsula due to the large size of the storm.
-
- At 5am EDT Thursday, Hurricane Jose was located 790 miles east of the Leeward Islands, which is about 2,155 miles southeast of Miami, Florida.
 - Maximum sustained winds have increased to near 90 mph, which is a Category 1 on the Saffir-Simpson Hurricane Wind Scale.
 - Additional strengthening is expected and Jose could be a major hurricane strength by Friday.
 - Jose is expected to continue moving towards the west-northwest, approaching the northern Leeward Islands this weekend before turning northwest.
 - Beyond 4 days, the track for Jose is also uncertain as some models predict the Jose could stall in the western Atlantic.
-
- At 5am EDT Thursday, Hurricane Katia was located in the southwestern Gulf of Mexico about 350 miles south-southeast of the U.S./Mexico border, or about 890 miles west-southwest of Key West, Florida.
 - Maximum sustained winds are near 80mph, making Katia a Category 1 hurricane.
 - Katia is stationary and little overall motion is anticipated today, but then the hurricane is forecast to turn southwestward and approach the coast of eastern Mexico late Friday or early Saturday.

Florida Outlook

- All of the Florida Peninsula and the eastern Florida Big Bend lie within the NHC 5 day cone of error and could feel impacts from this system regardless of the eventual path.
- No watches or warnings are currently in effect, but will likely be issued later this morning for portions of South Florida and the Florida Keys, with additional watches possible for areas northward later on Thursday or Friday.
- The chances for tropical storm and hurricane winds continue to increase for the Florida Peninsula.
- There is currently a 1 in 3 chance of hurricane force winds across the Treasure Coast and Southeast Florida, as well as the upper Florida Keys within the next 5 days.
- Wind impacts to South Florida from Irma could occur as early as early Saturday morning, with the most likely timeframe for tropical storm force winds arriving Saturday afternoon. Hurricane force winds could arrive in Southeast Florida early Sunday morning.
- A storm of this size and intensity would have the ability to produce dangerous storm surge heights across portions of South Florida, the Florida Keys and the Florida East Coast. Dangerous storm surge could also occur along the West coast due to westerly winds on the south side of the storm as it moves northward.
- Specifics on surge depth will be available later today.
- In addition, rainfall amounts could reach as high as 6-12", but specifics on the location of high rainfall totals is still uncertain and dependent on the track of the system.
- Ocean swells from Irma have already reached South Florida and will produce a moderate to risk of rip currents from today through the weekend.
- Hurricane Jose does not pose a threat to Florida within the next 5-7 days, but should be monitored.
- Hurricane Katia does not pose a threat to Florida, but ocean swells from the system may affect portions of the Panhandle coast over the weekend and increase the rip current risk.

Another briefing packet will be issued Thursday afternoon. For more information, visit the NHC website at www.hurricanes.gov.



TROPICAL UPDATE

Created by:

Amy Godsey, Chief State Meteorologist

amy.godsey@em.myflorida.com

State Meteorological Support Unit

Florida Division of Emergency Management

Users wishing to subscribe (approval pending) to this distribution list, register at
https://public.govdelivery.com/accounts/FLDEM/subscriber/new?topic_id=SERT_Met_Tropics.

Other reports available for subscription are available at

<https://public.govdelivery.com/accounts/FLDEM/subscriber/new?preferences=true>