



TROPICAL UPDATE

5 PM EDT

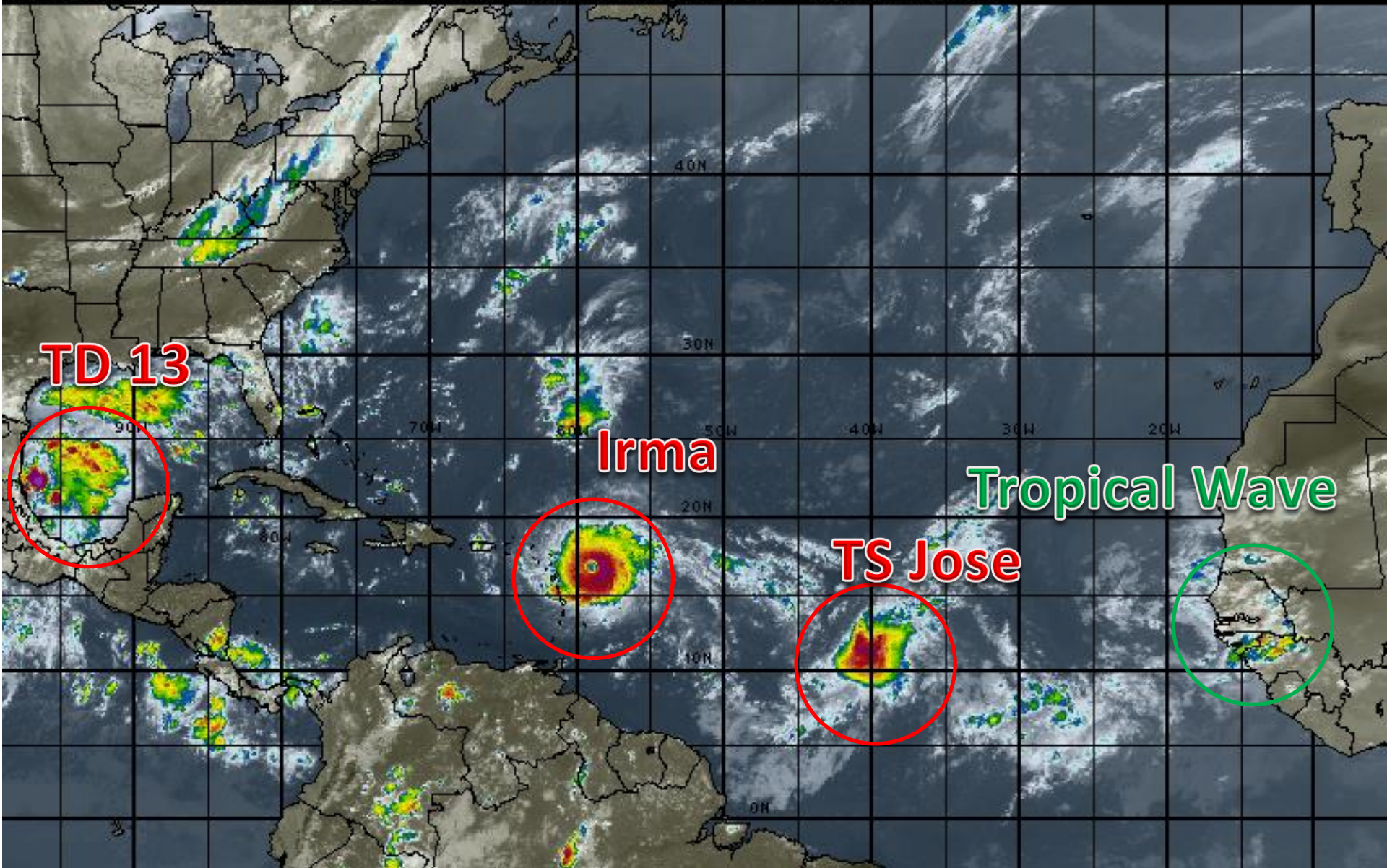
Tuesday, September 5, 2017

**Hurricane Irma, Tropical Storm Jose, and
Tropical Depression Thirteen**

This update is intended for government and emergency response officials, and is provided for informational and situational awareness purposes only. Forecast conditions are subject to change based on a variety of environmental factors. For additional information, or for any life safety concerns with an active weather event please contact your County Emergency Management or Public Safety Office, local National Weather Service forecast office or visit the National Hurricane Center website at www.nhc.noaa.gov.

Atlantic Basin Satellite Image

18:00 05-SEP-2017 GMT Copyright © 1998-2016 WSI Corporation <http://www.wsi.com>



Hurricane Irma

5 PM EDT Tue Sep 05 2017

Position 17.1 N 59.8 W

Maximum Winds 185 mph

Gusts 225 mph

Movement W at 14 mph

Minimum Pressure 926 mb (27.33 inches)

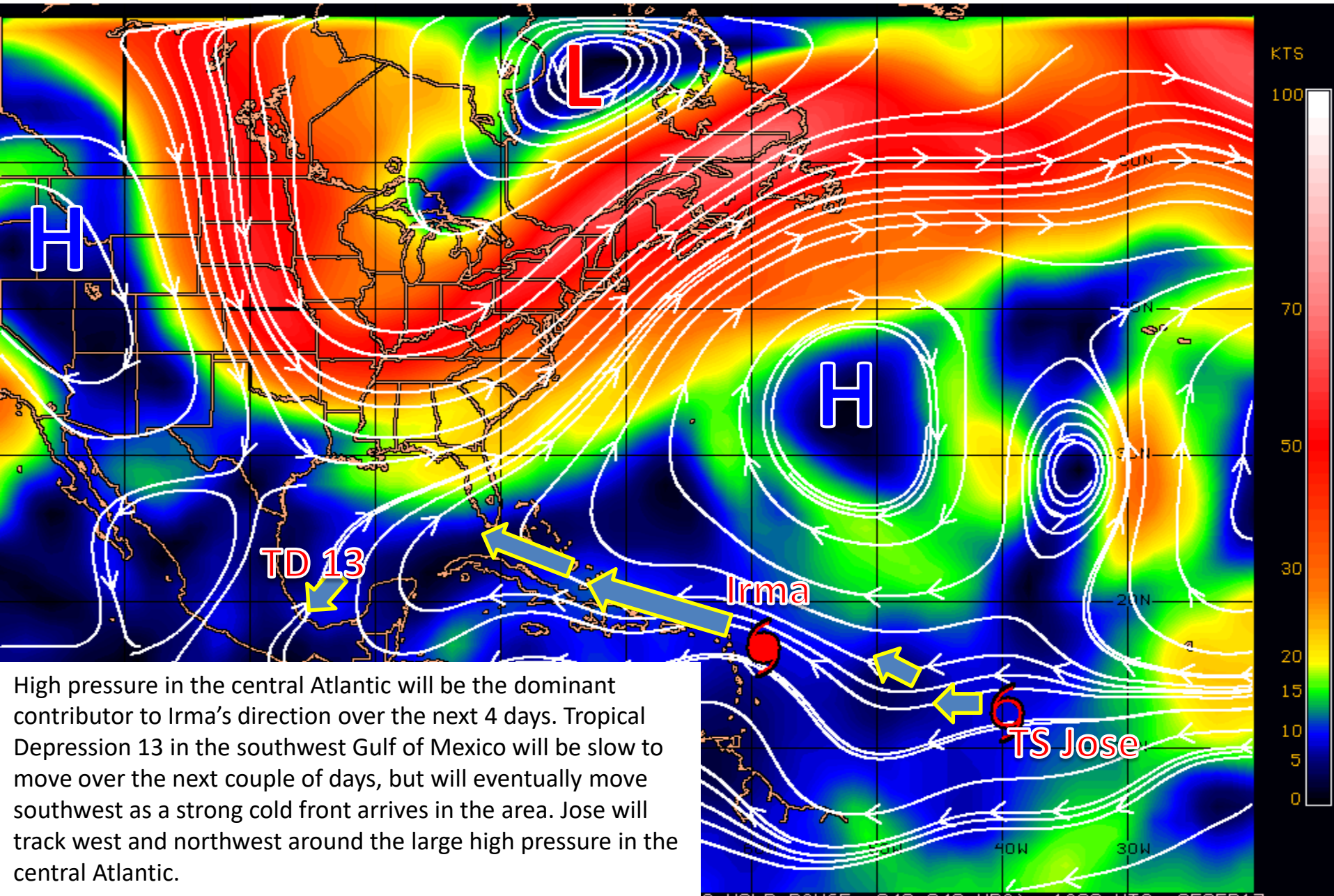
Blue Marble basemap imagery courtesy NASA

Satellite 9:17 PM UTC

5:17 PM EDT

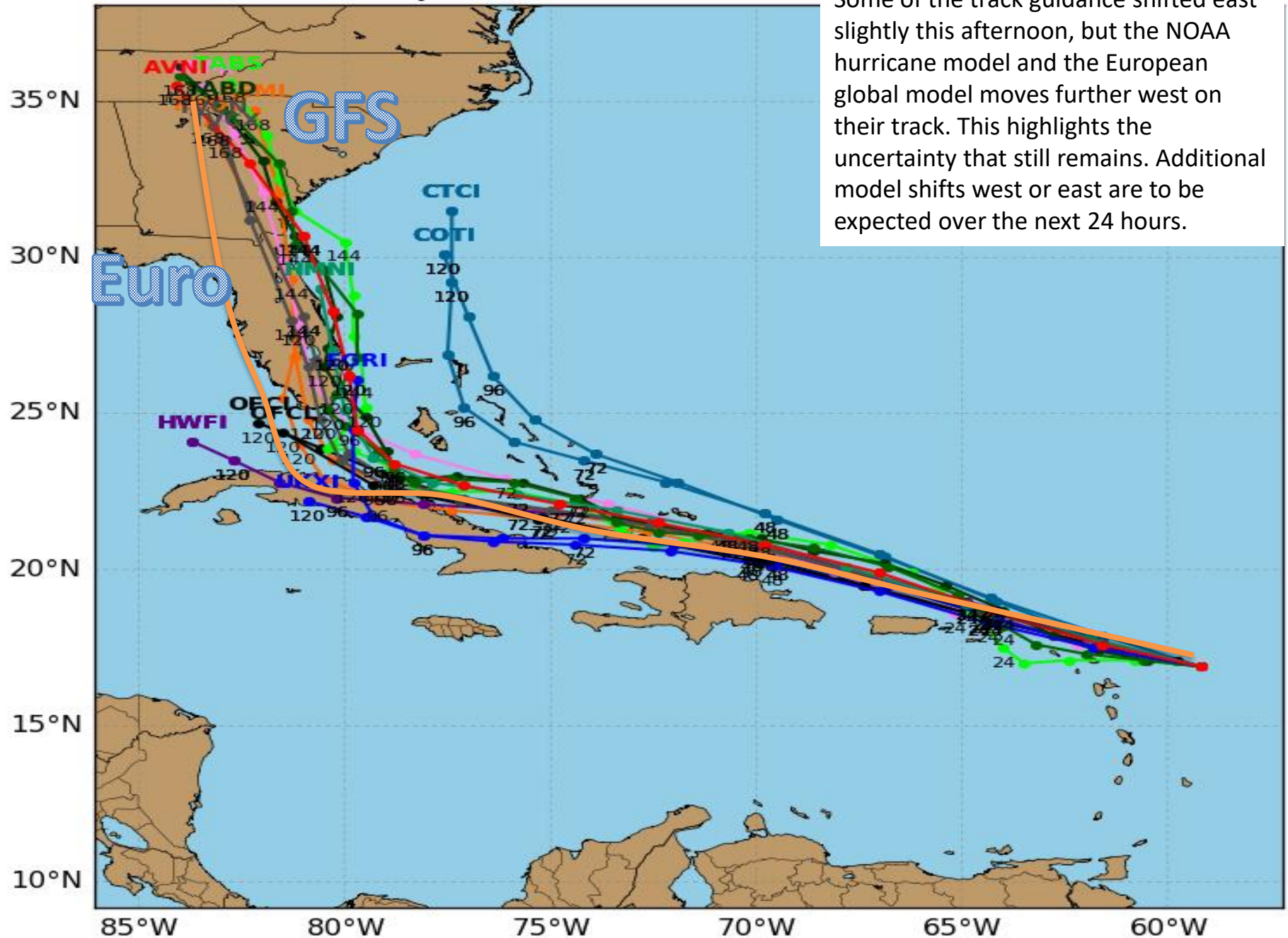


Steering Currents



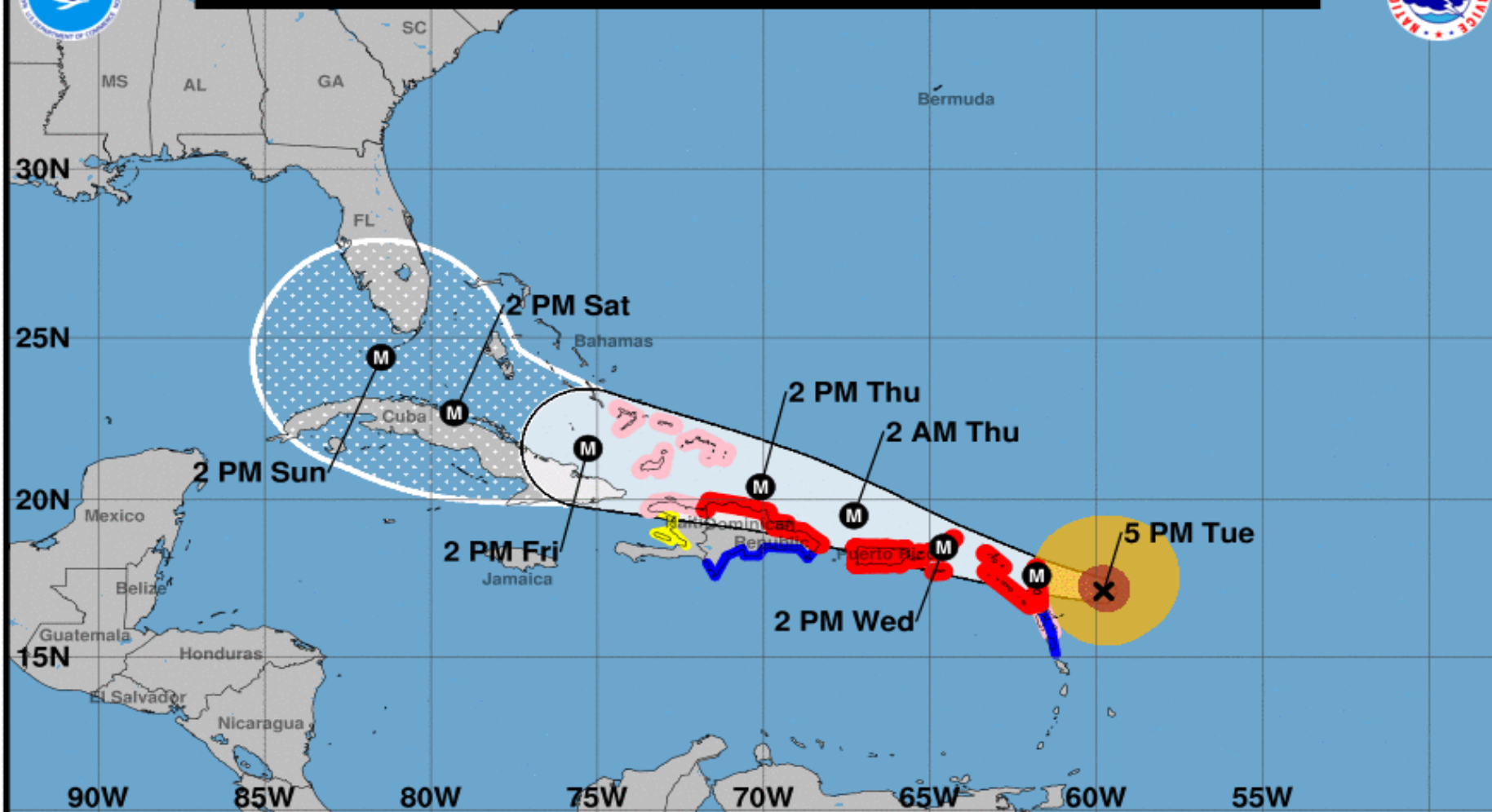
Initialized at 18z Sep 05 2017

Some of the track guidance shifted east slightly this afternoon, but the NOAA hurricane model and the European global model moves further west on their track. This highlights the uncertainty that still remains. Additional model shifts west or east are to be expected over the next 24 hours.





Note: The cone contains the probable path of the storm center but does not show the size of the storm. Hazardous conditions can occur outside of the cone.



Hurricane Irma

Tuesday September 05, 2017
5 PM AST Advisory 27
NWS National Hurricane Center

Current information: x

Center location 17.1 N 59.8 W
Maximum sustained wind 185 mph
Movement W at 15 mph

Forecast positions:

● Tropical Cyclone ○ Post/Potential TC
Sustained winds: D < 39 mph
S 39-73 mph H 74-110 mph M > 110 mph

Potential track area:

Day 1-3 Day 4-5

Watches:

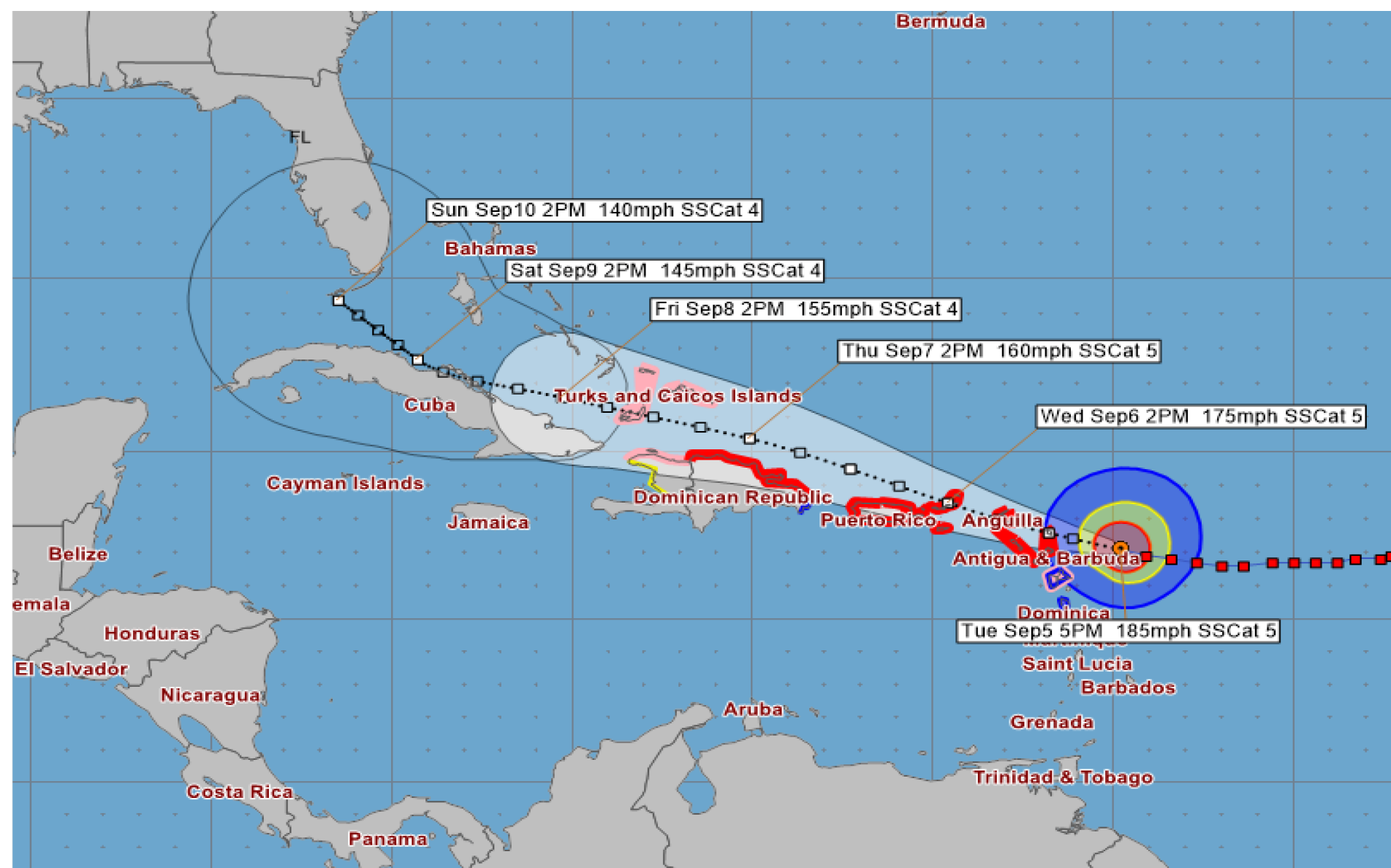
Hurricane Trop Stm

Warnings:

Hurricane Trop Stm

Current wind extent:

Hurricane Trop Stm



Hurricane Irma - Tuesday, September 5, 2017 5 PM EDT Advisory #27

Center Location: 17.1 N 59.8 W Maximum Sustained Winds: 185 mph (Cat 5) Movement: 15 mph W

forecast positions Potential Track Area: day 1-3 day 4-5 Surface Wind Field: at current location

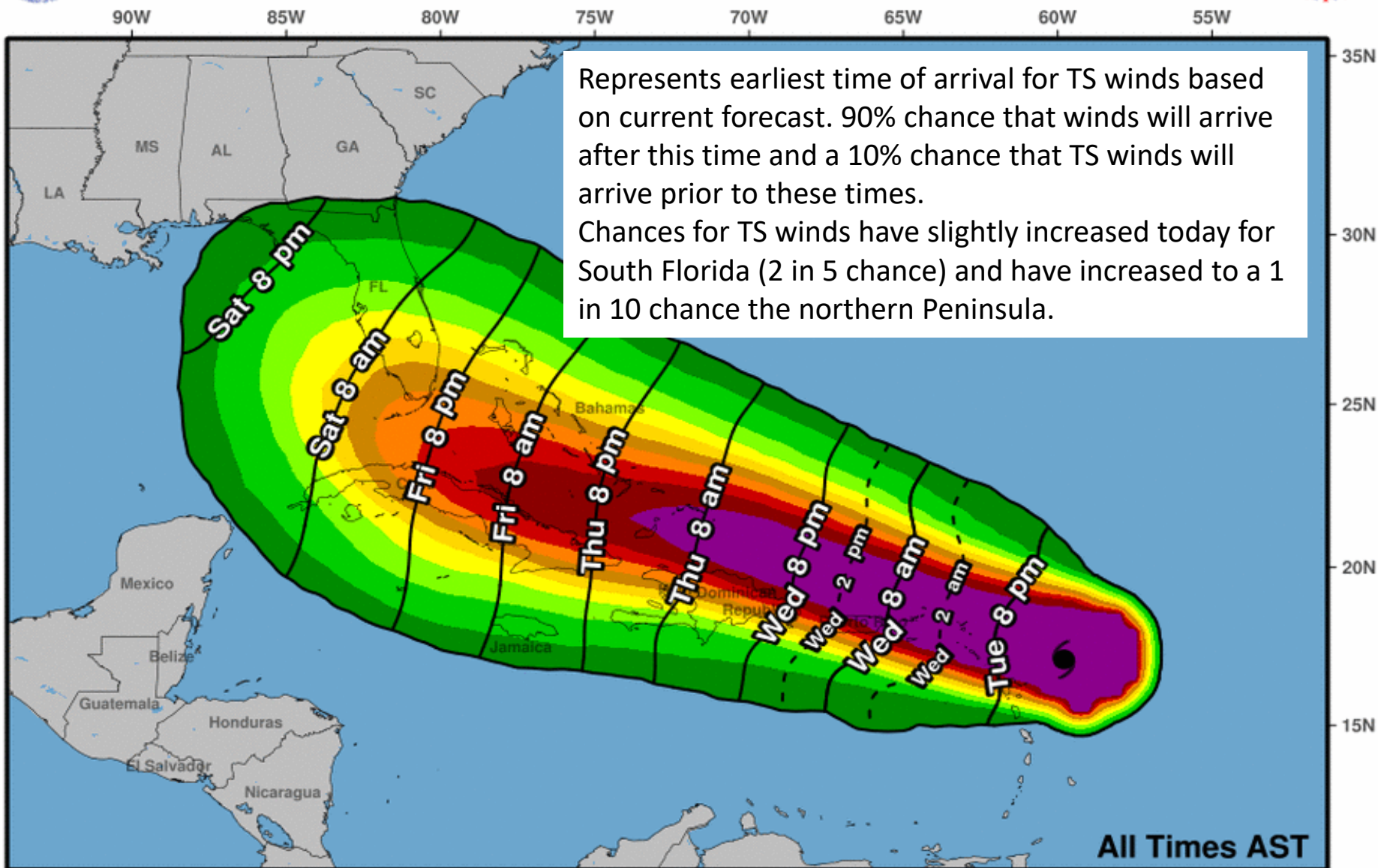
Watches: hurricane tropical storm

Warnings: hurricane tropical storm

Sustained Wind Speeds: tropical storm ≥ 34 kt/39mph strong tropical storm ≥ 50 kt/58mph hurricane ≥ 64 kt/74mph



Earliest Reasonable Arrival Time of Tropical-Storm-Force Winds



Hurricane Irma
Tue. Sep. 5, 2017 5 pm AST
Advisory 27

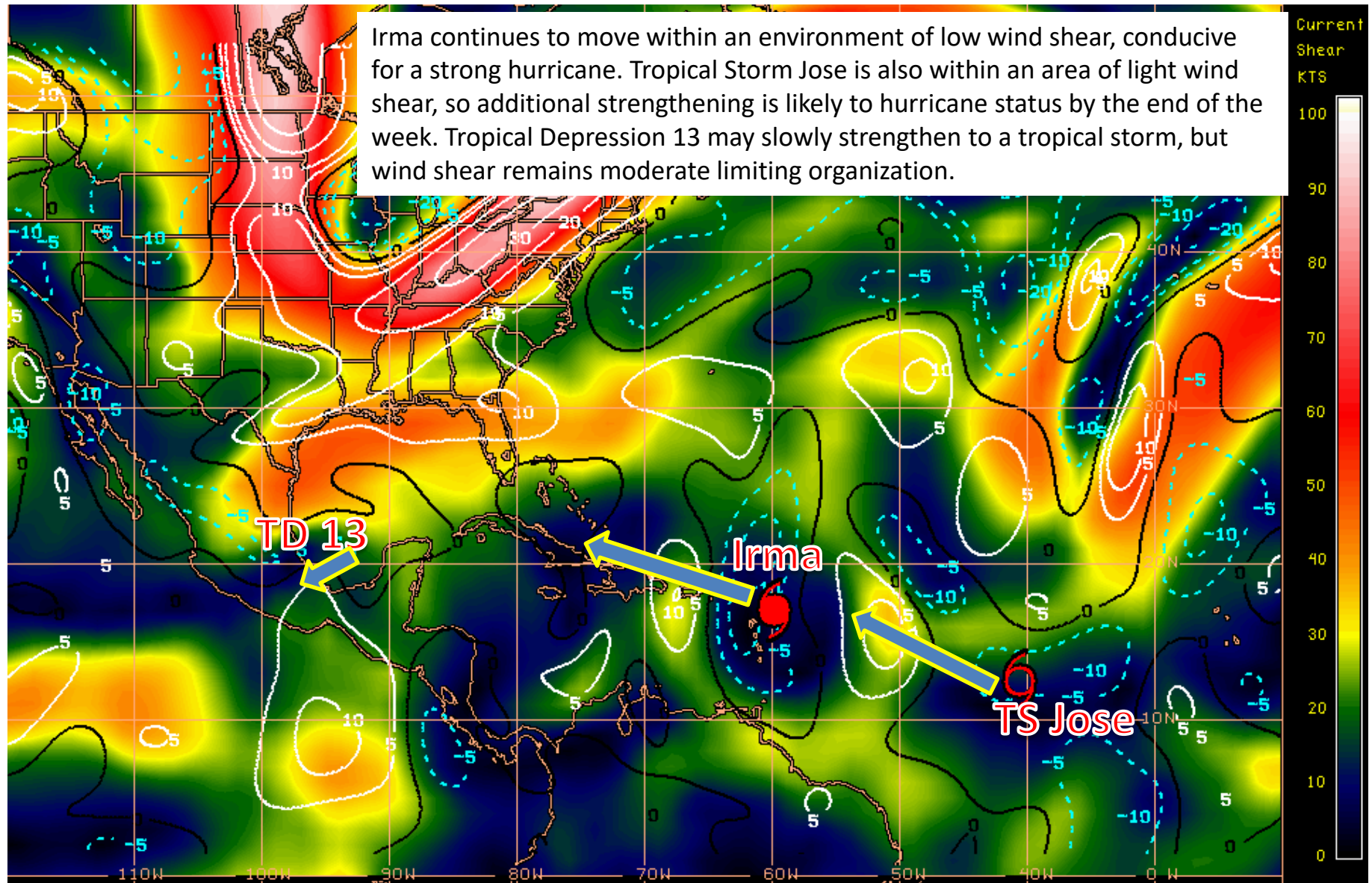
Storm Location &
Wind Speed (knots)
○ <34 ◐ 34-63 ● ≥64

Five-day chance of receiving sustained 34+ knot (39+ mph) winds

5	10	20	30	40	50	60	70	80	90	100 %
---	----	----	----	----	----	----	----	----	----	-------

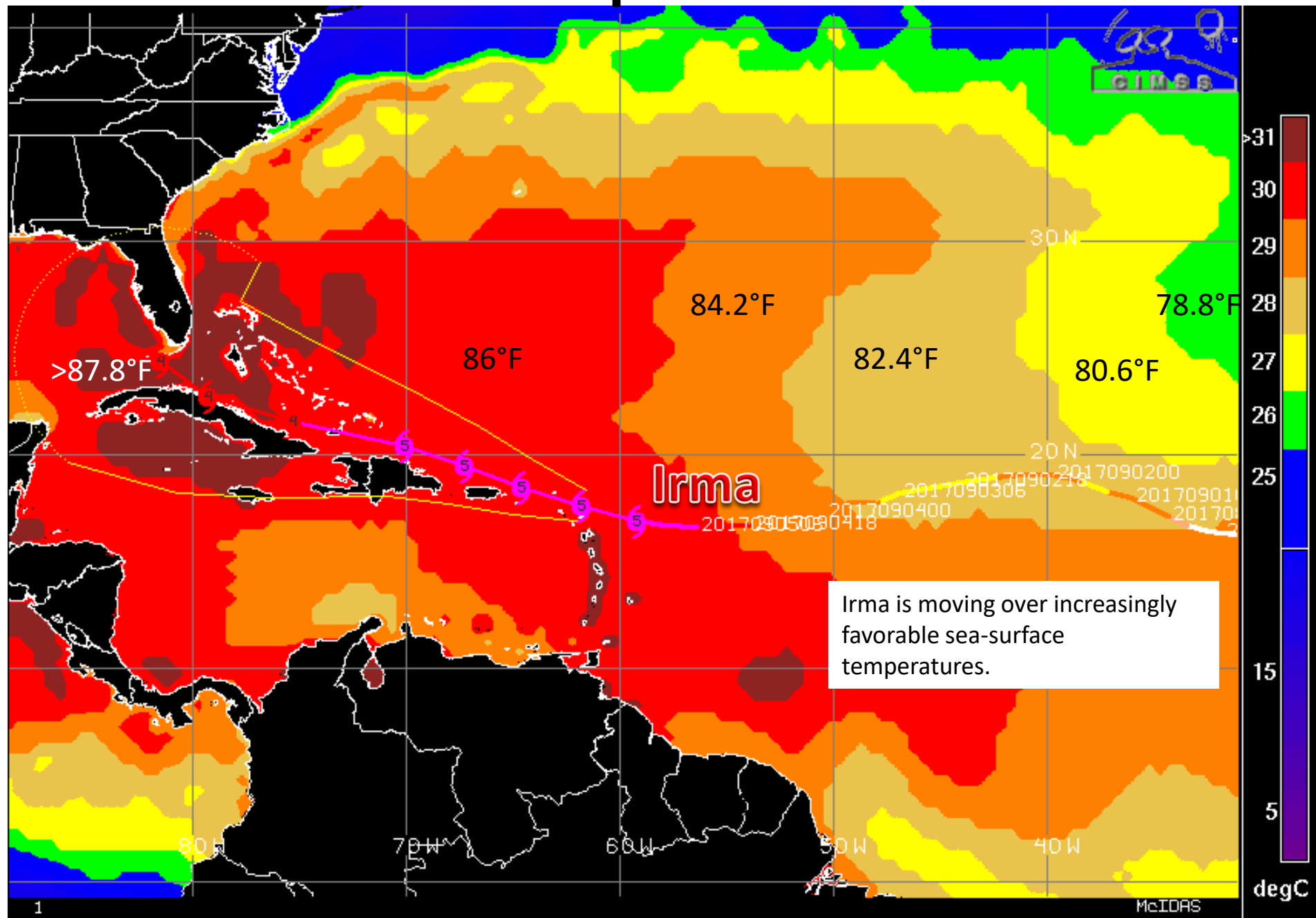
Current Wind Shear (Shaded) and Shear Tendency (Lines)

Irma continues to move within an environment of low wind shear, conducive for a strong hurricane. Tropical Storm Jose is also within an area of light wind shear, so additional strengthening is likely to hurricane status by the end of the week. Tropical Depression 13 may slowly strengthen to a tropical storm, but wind shear remains moderate limiting organization.



Shear Tendency (KTS) Over Past 24 Hours: Increasing ——— Decreasing - - - -

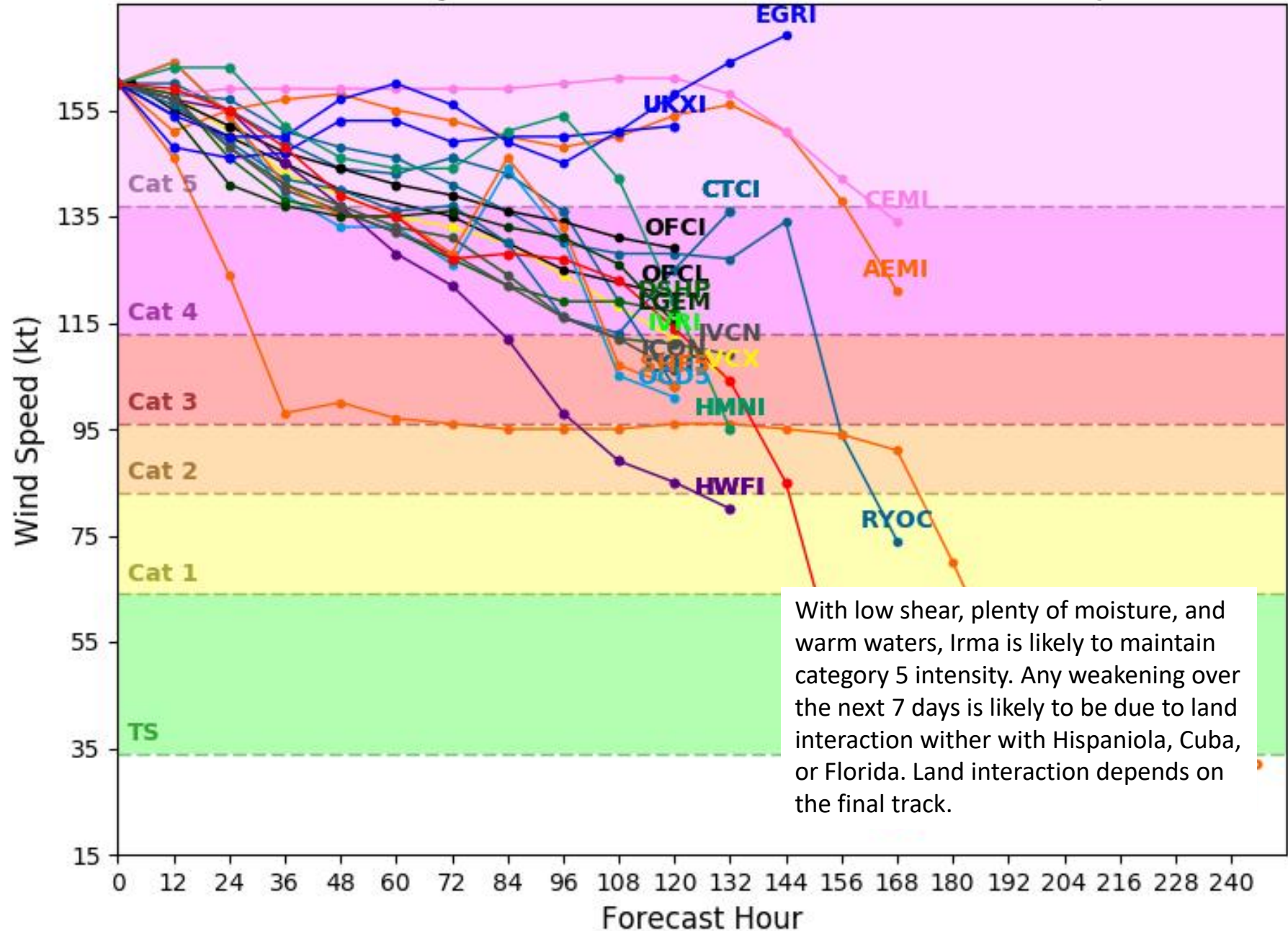
Sea Surface Temperatures Near Irma



Hurricane IRMA Model Intensity Guidance

Initialized at 18z Sep 05 2017

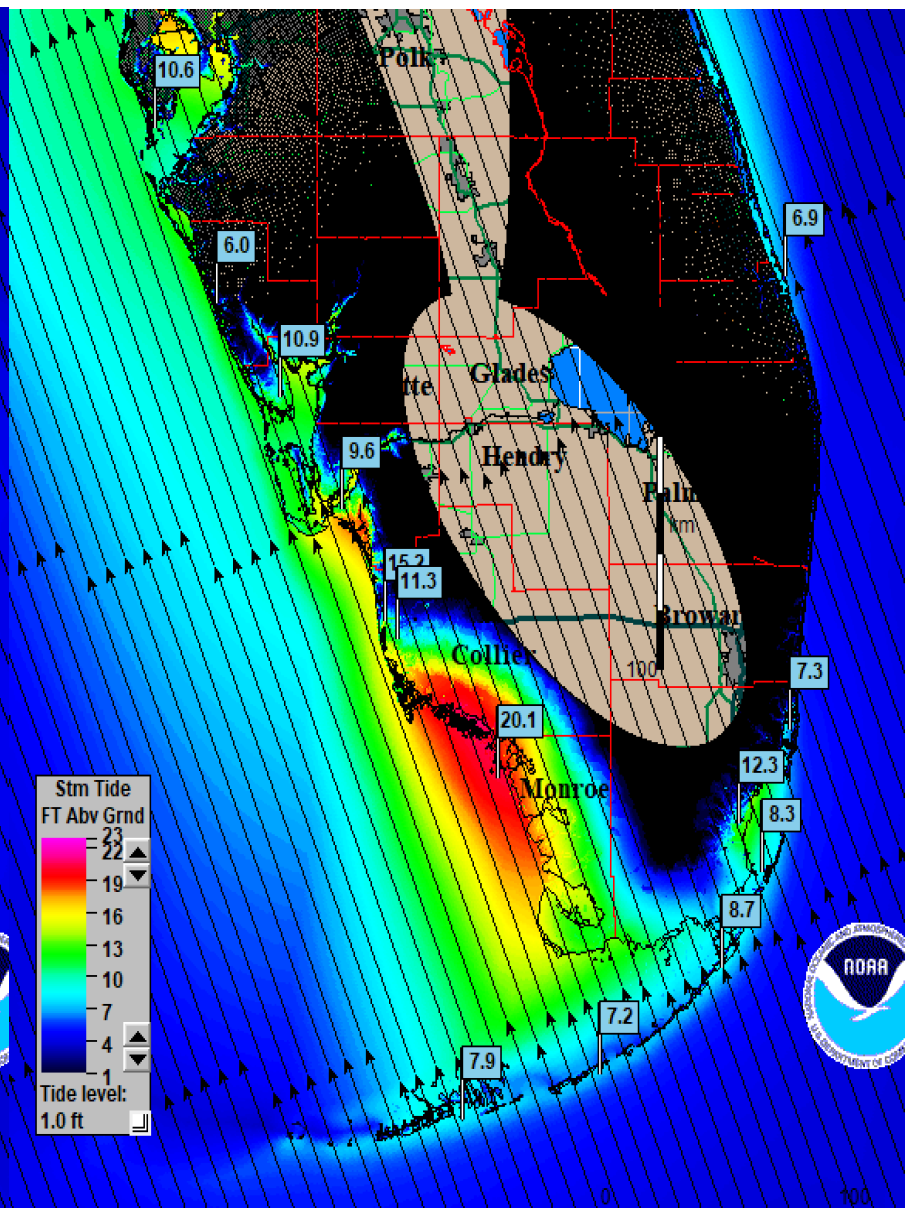
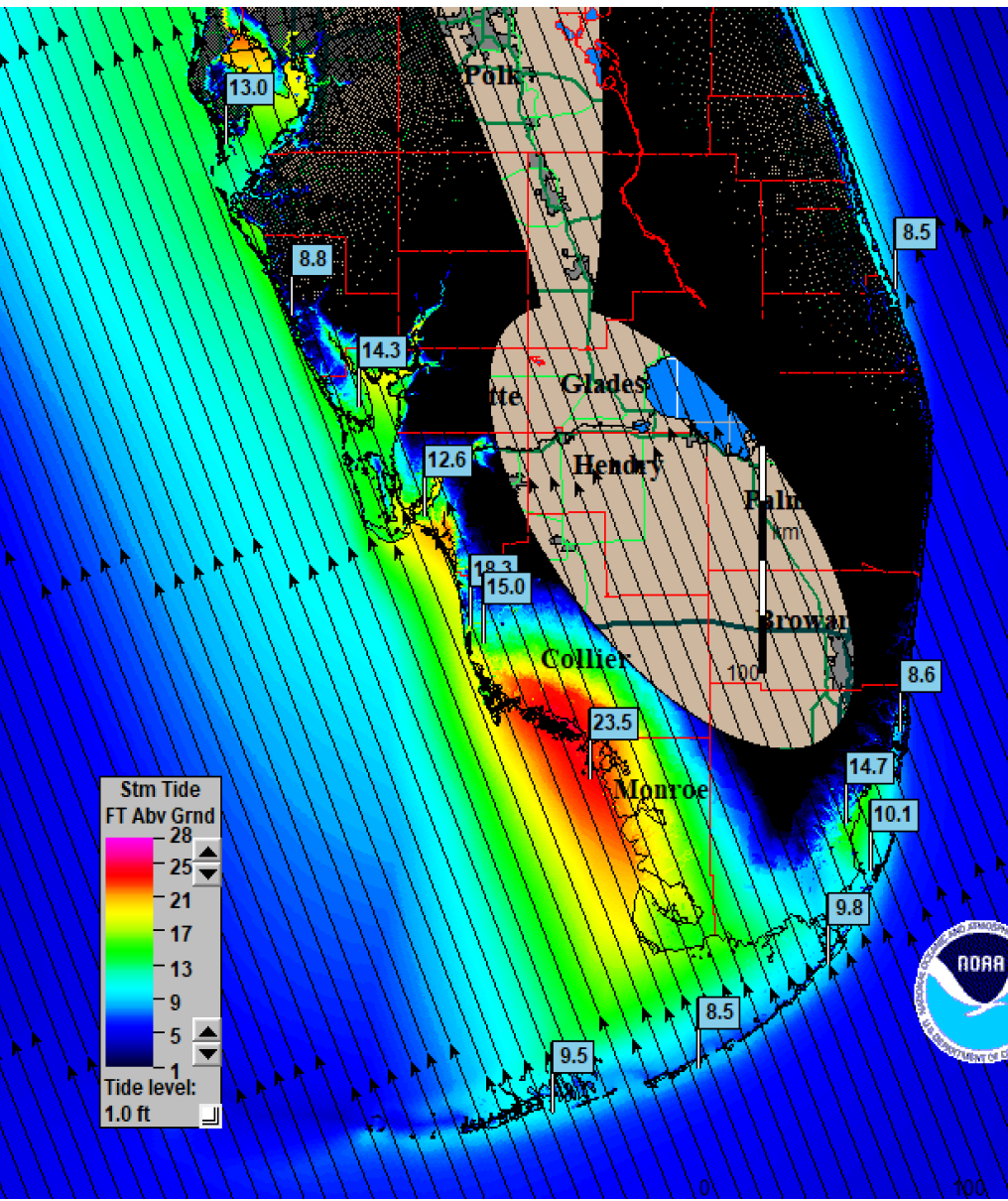
Levi Cowan - tropicaltidbits.com



SLOSH storm surge estimates

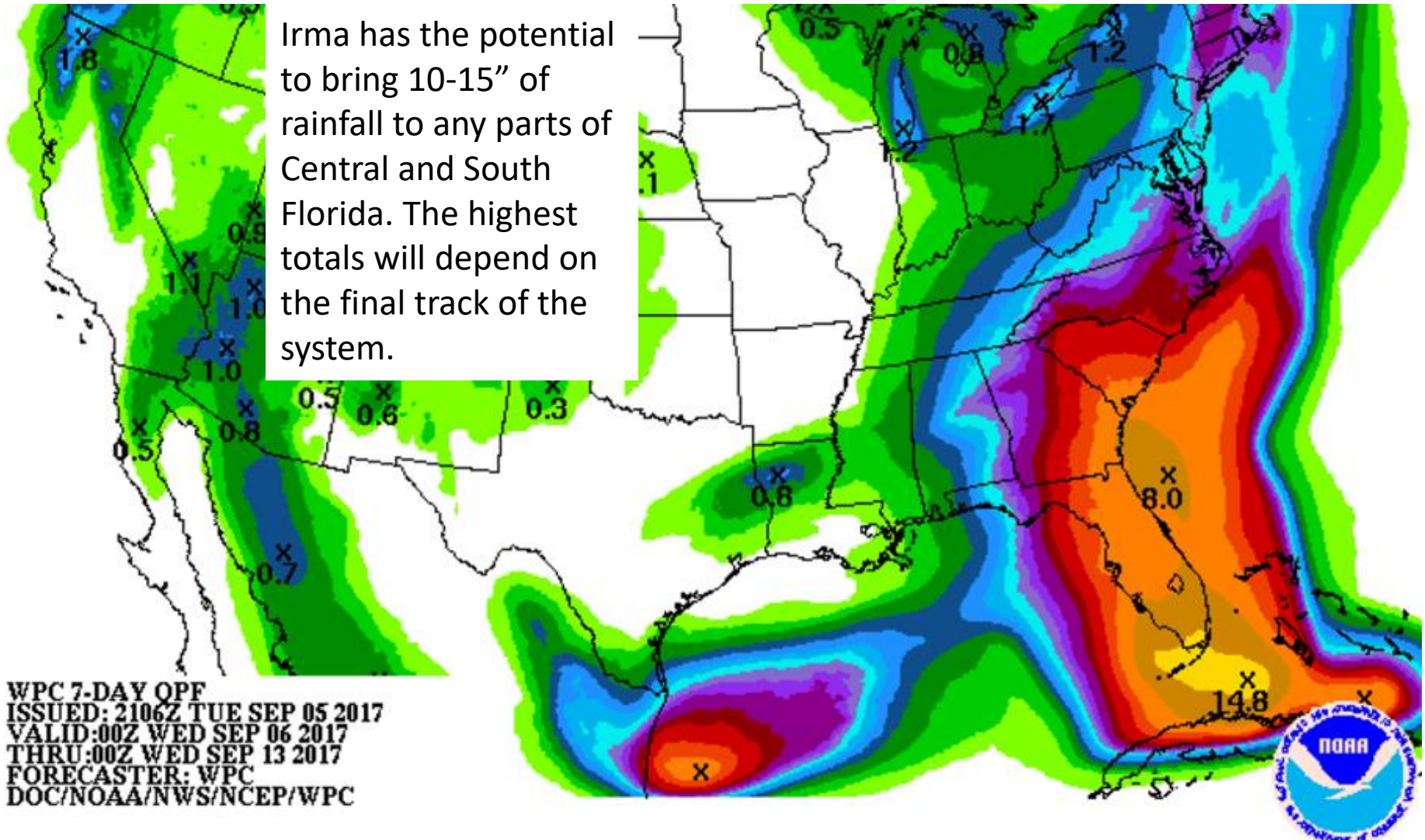
Cat 5 mvg NNW @10mph

Cat 4 mvg NNW 10mph



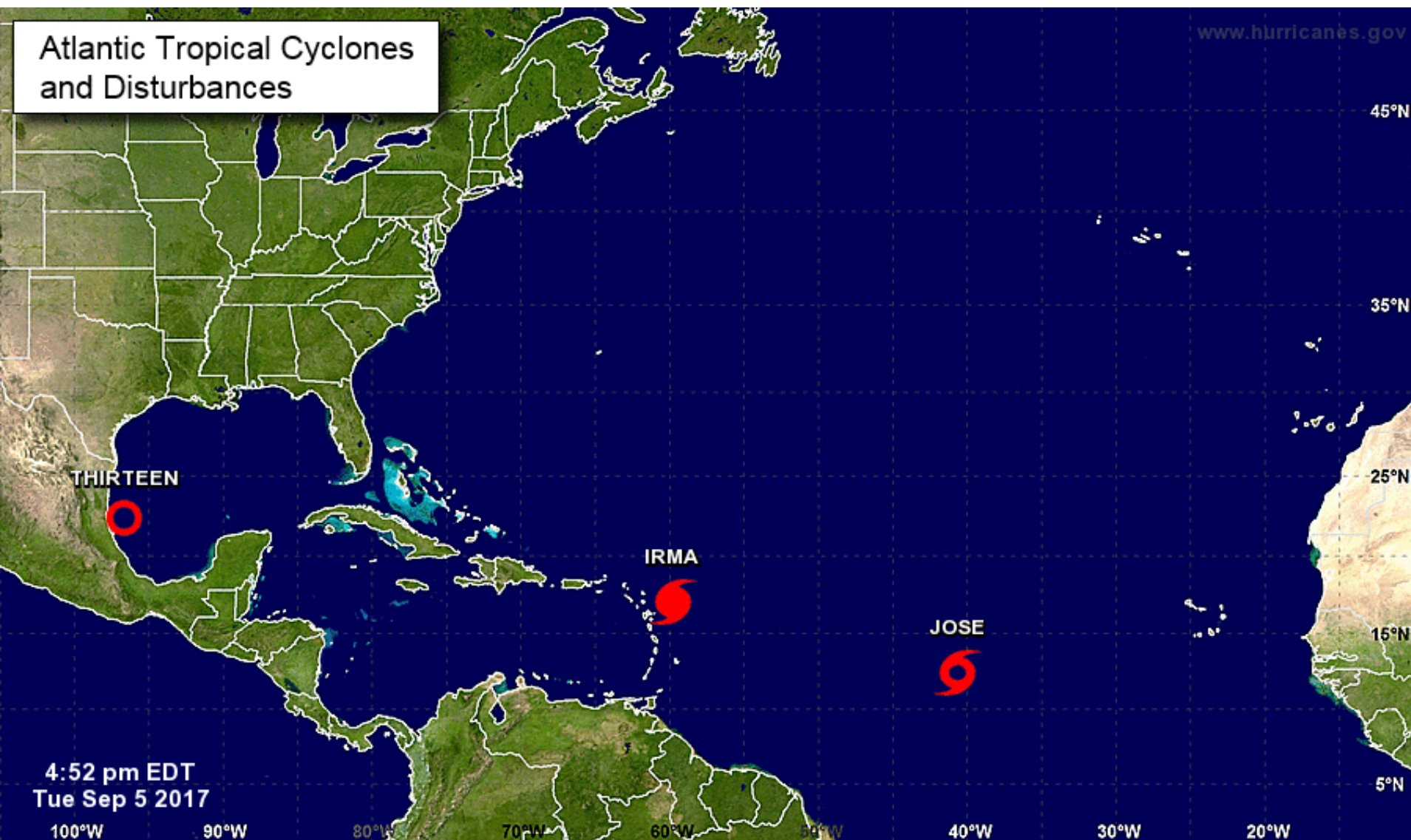
7 Day Cumulative Rainfall Forecast (does not account for higher totals)

Irma has the potential to bring 10-15" of rainfall to any parts of Central and South Florida. The highest totals will depend on the final track of the system.



Atlantic Tropical Cyclones and Disturbances

www.hurricanes.gov

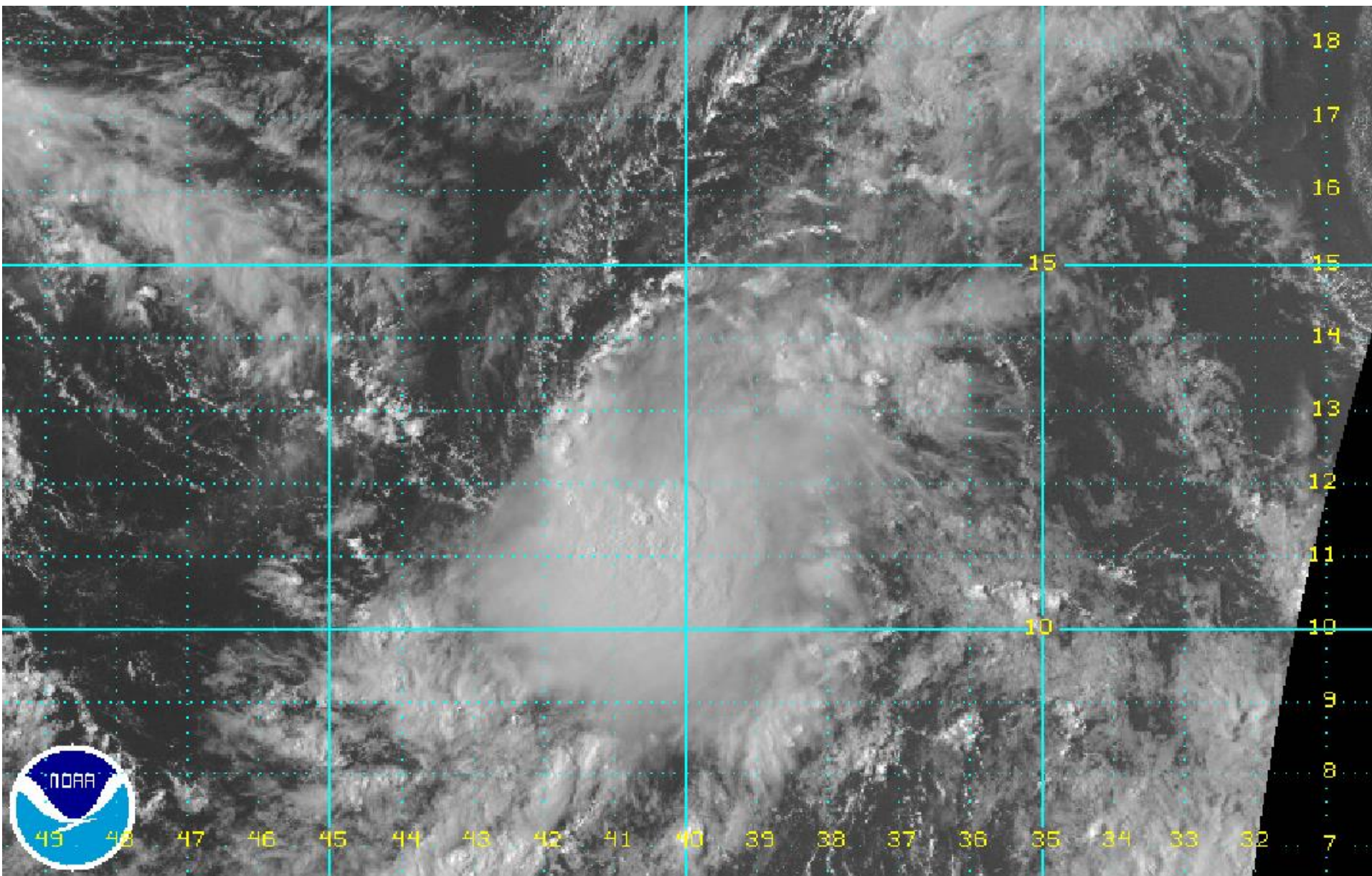


Current Disturbances and Two-Day Cyclone Formation Chance: ✖ < 40% ✖ 40-60% ✖ > 60%

Tropical or Sub-Tropical Cyclone: ○ Depression 🌀 Storm 🌀 Hurricane

⊗ Post-Tropical Cyclone ✖ Remnants

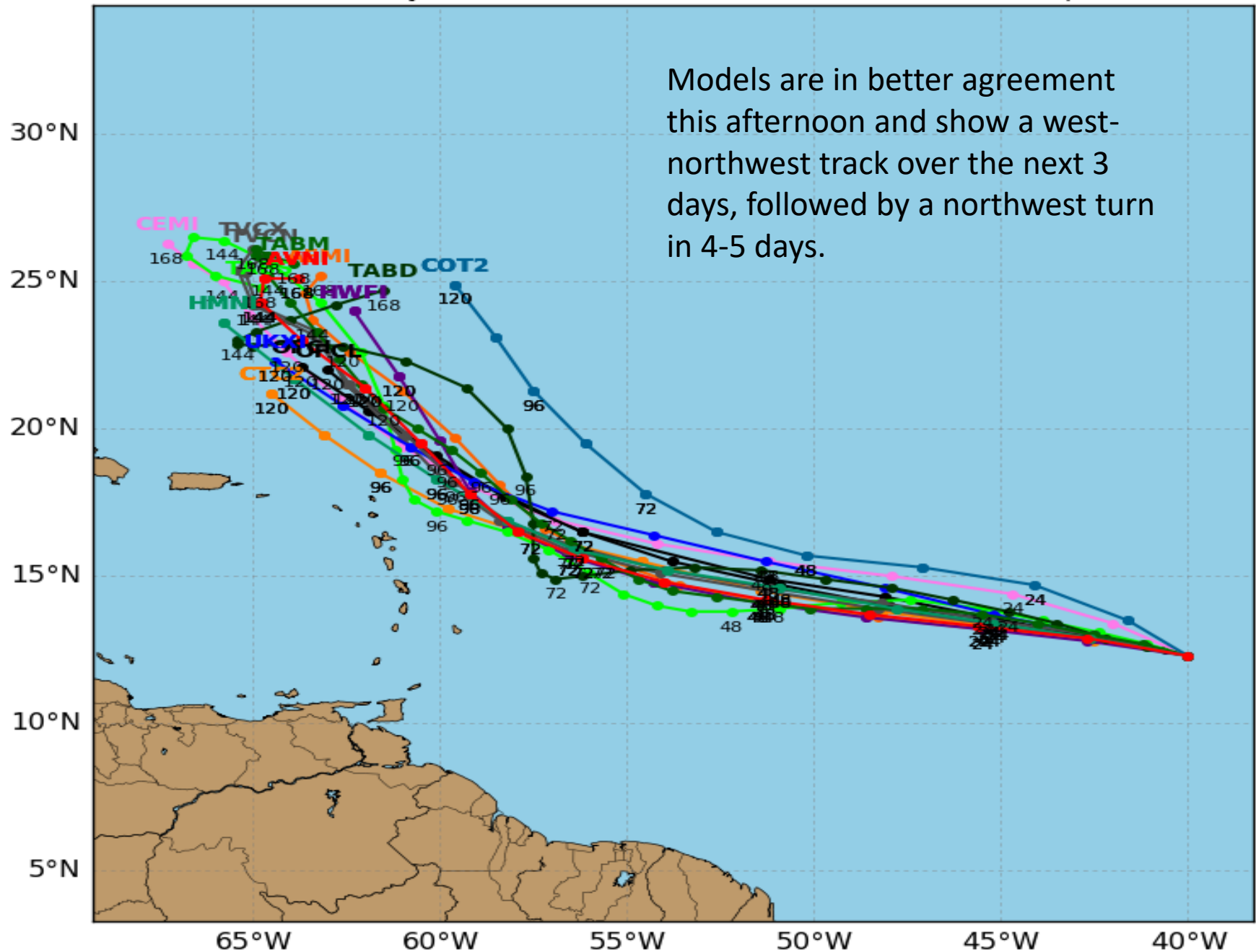
Tropical Storm Jose Satellite Imagery



Tropical Storm JOSE Model Track Guidance

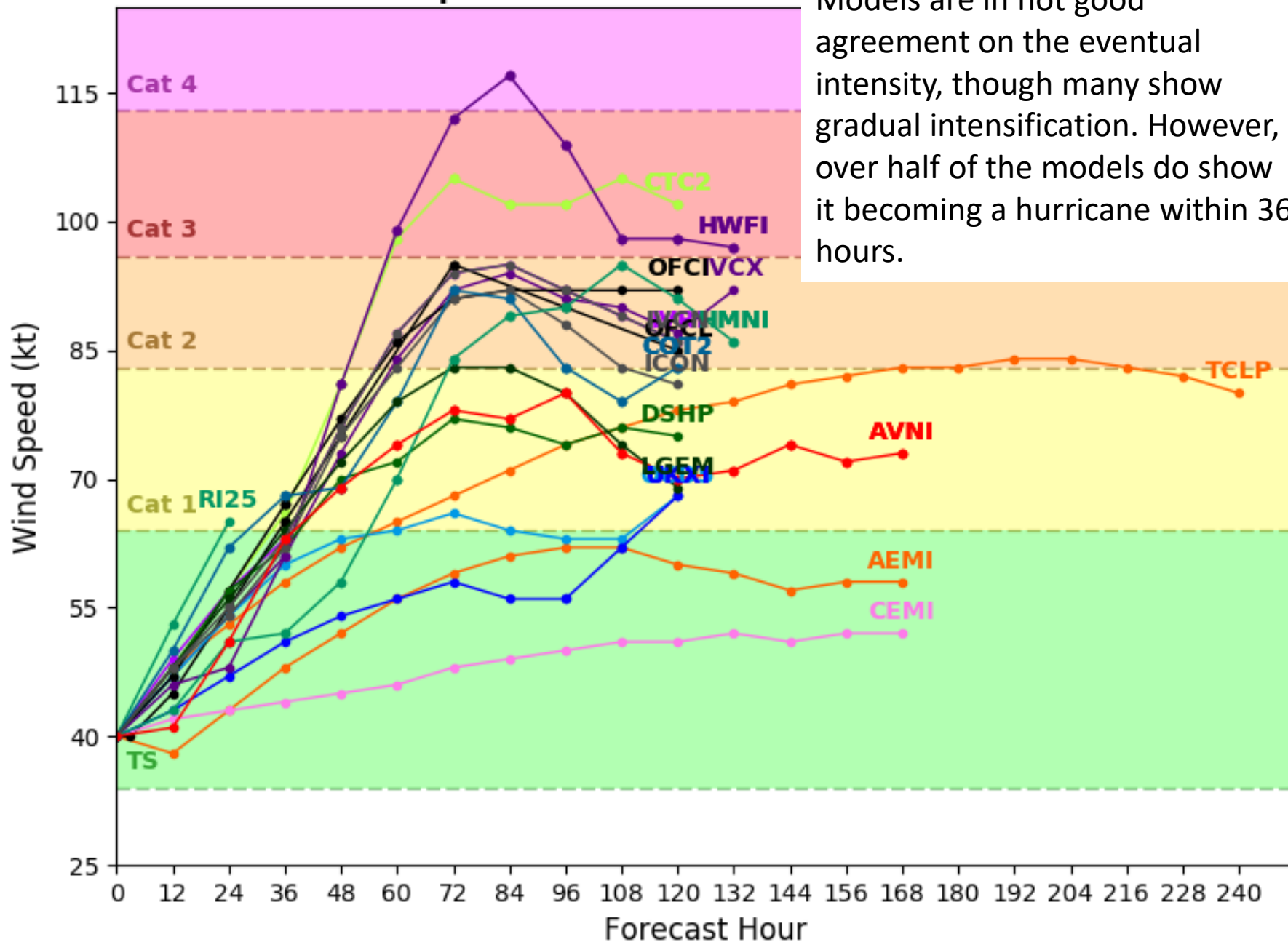
Initialized at 18z Sep 05 2017

Levi Cowan - tropicaltidbits.com



Tropical Storm JOSE Model Intensity Guidance

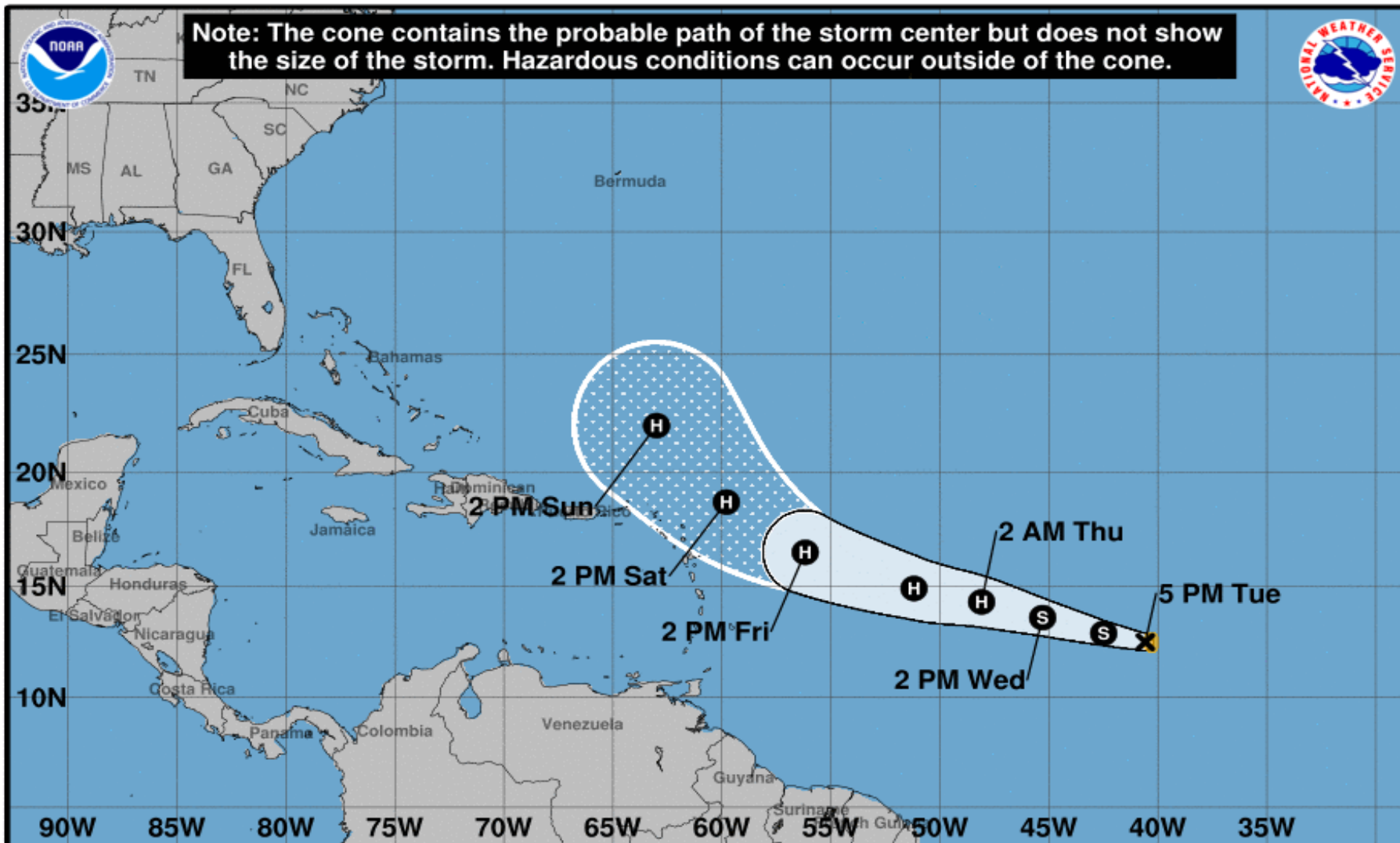
Initialized at 18z Sep 05 2017



Models are in not good agreement on the eventual intensity, though many show gradual intensification. However, over half of the models do show it becoming a hurricane within 36 hours.



Note: The cone contains the probable path of the storm center but does not show the size of the storm. Hazardous conditions can occur outside of the cone.



Tropical Storm Jose

Tuesday September 05, 2017

5 PM AST Advisory 2

NWS National Hurricane Center

Current information: x

Center location 12.5 N 40.6 W

Maximum sustained wind 45 mph

Movement W at 12 mph

Forecast positions:

● Tropical Cyclone ○ Post/Potential TC

Sustained winds: D < 39 mph

S 39-73 mph H 74-110 mph M > 110 mph

Potential track area:

Day 1-3 Day 4-5

Watches:

Hurricane Trop Stm

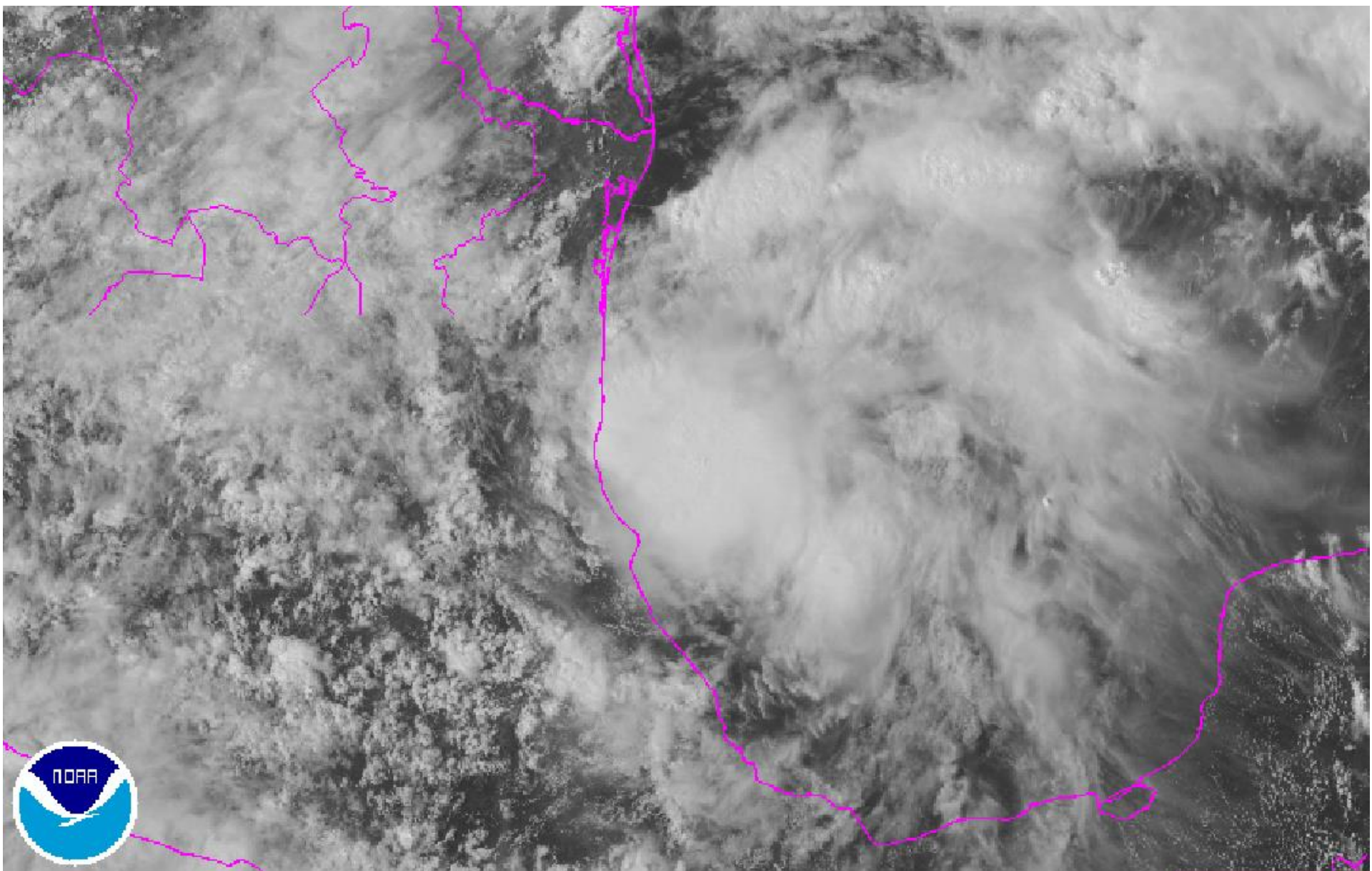
Warnings:

Hurricane Trop Stm

Current wind extent:

Hurricane Trop Stm

Tropical Depression 13 Satellite Imagery

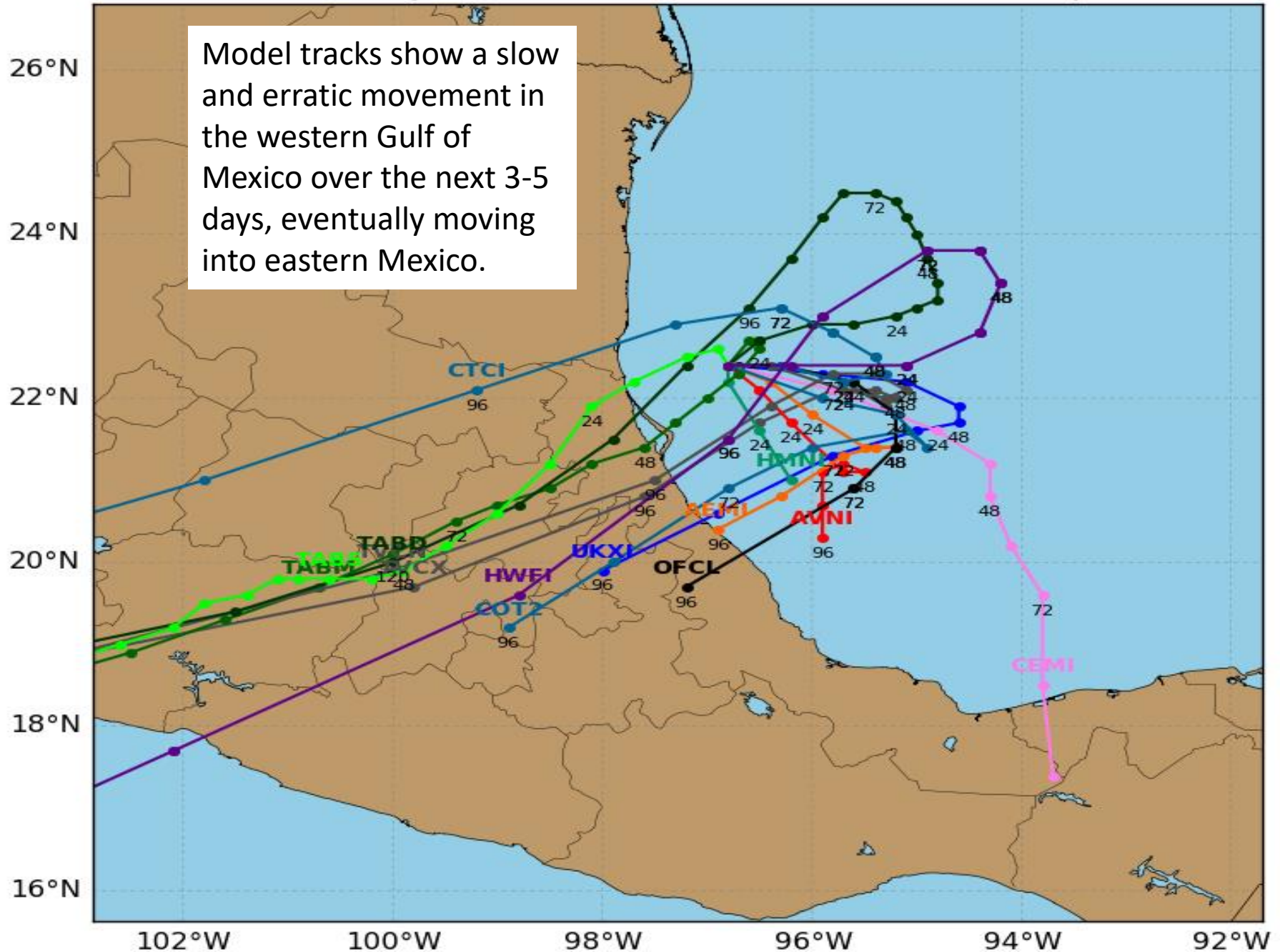


Tropical Depression 13L Model Track Guidance

Initialized at 18z Sep 05 2017

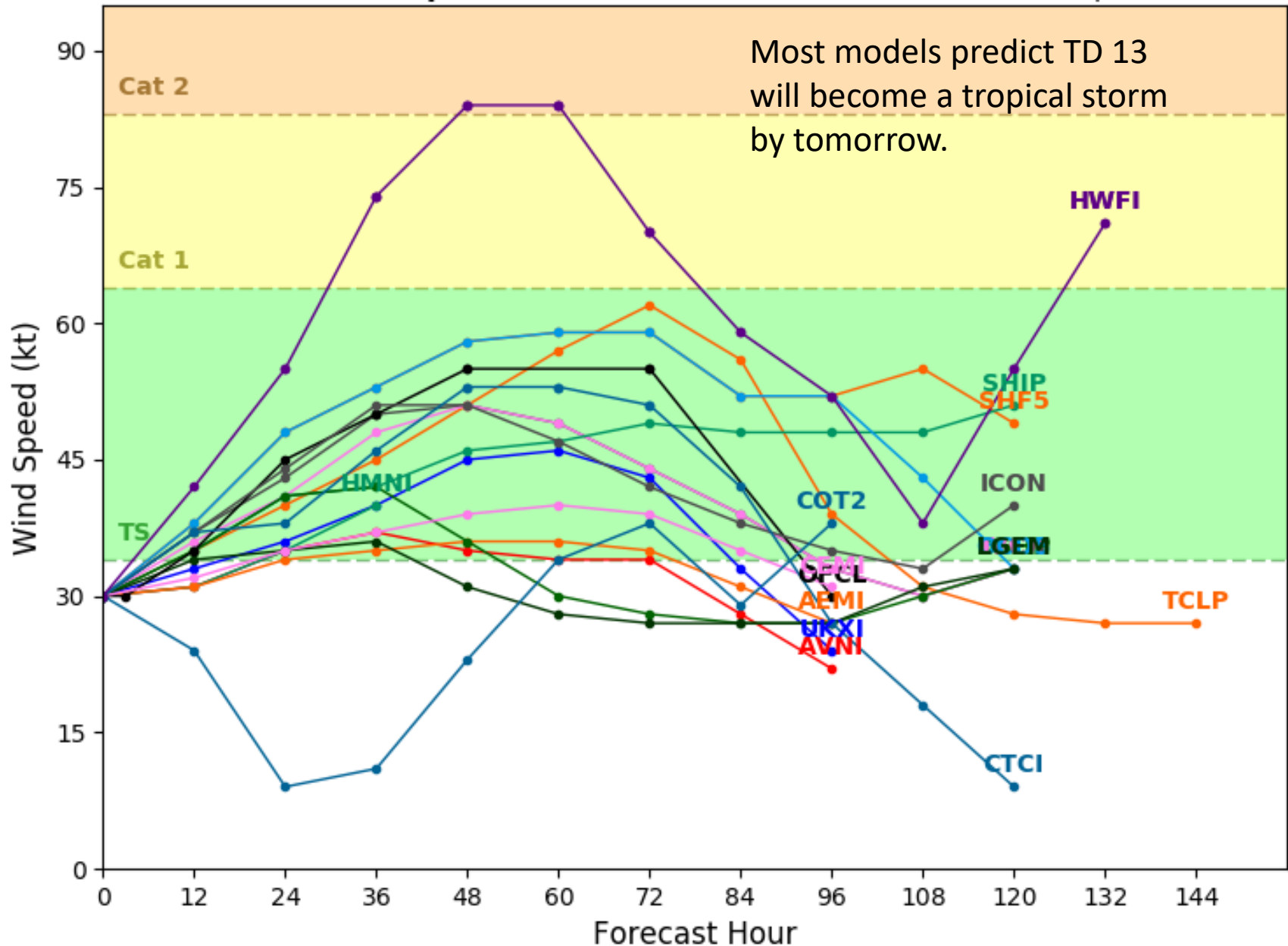
Levi Cowan - tropicaltidbits.com

Model tracks show a slow and erratic movement in the western Gulf of Mexico over the next 3-5 days, eventually moving into eastern Mexico.



Initialized at 18z Sep 05 2017

Most models predict TD 13 will become a tropical storm by tomorrow.





Note: The cone contains the probable path of the storm center but does not show the size of the storm. Hazardous conditions can occur outside of the cone.



Tropical Depression Thirteen
Tuesday September 05, 2017
4 PM CDT Advisory 1
NWS National Hurricane Center

Current information: x
Center location 22.4 N 96.7 W
Maximum sustained wind 35 mph
Movement E at 2 mph

Forecast positions:
● Tropical Cyclone ○ Post/Potential TC
Sustained winds: D < 39 mph
S 39-73 mph H 74-110 mph M > 110 mph

Potential track area:

Day 1-3 Day 4-5

Watches:

Hurricane Trop Stm

Warnings:

Hurricane Trop Stm

Current wind extent:

Hurricane Trop Stm

Summary

- At 5pm EDT Tuesday, Hurricane Irma was located about 130 miles east of the northern Leeward Islands, or about 1,450 miles east-southeast of Miami.
- Maximum sustained winds have increased to near 185 mph, keeping Irma a category 5 storm on the Saffir-Simpson Hurricane Wind scale.
- Some fluctuations in intensity are likely during the next day or two, but Irma is forecast to remain a powerful hurricane due to low wind shear and favorable sea-surface temperatures.
- Irma is moving toward the west near 15 mph. A turn toward the west-northwest is forecast to begin tonight and continue for the next couple of days, approaching South Florida and the Florida Keys by Sunday.
- Long-range models are predicting a northwest and north turn to occur in about 4-6 days, but exactly when the turn occurs is still uncertain.
- Hurricane hunter aircraft will continue to investigate the system regularly through the week.
- Invest 94L was upgraded to Tropical Storm Jose at 11am EDT Tuesday.
- Computer models are agreement on track, but not intensity. However, most models and the official forecast predict additional strengthening as it moves west-northwest.
- Jose is expected to become a hurricane by Thursday and the turn more to the northwest in 3-4 days.
- The tropical wave in the southwestern Gulf of Mexico was upgraded to Tropical Depression #13 at 5pm EDT Tuesday.
- A slow and erratic movement in the western Gulf of Mexico is expected over the next 3-5 days, eventually moving into eastern Mexico.
- TD Could also become a tropical storm by tonight or tomorrow.
- The next name on the 2017 Atlantic storm name list is Katia.

Florida Outlook

- Central and South Florida lies within the NHC 5 day cone of error, but no watches or warnings are currently in effect.
- Chances for TS winds have slightly increased today for South Florida (2 in 5 chance) and have increased to a 1 in 10 chance the northern Peninsula.
- There is currently a 1 in 10 chance of hurricane force winds south of I-75/Alligator Alley within the next 5 days.
- Wind impacts to South Florida from Irma could occur as early as Friday night with the most likely timeframe for tropical storm force winds arriving on Saturday.
- Although specifics on storm surge are not yet available, a storm of this size and intensity would have the ability to produce dangerous storm surge heights across portions of South Florida and the Florida Keys.
- In addition, rainfall amounts could reach as high as 8-15", but specifics on the location of high rainfall totals is still uncertain.
- Tropical Storm Jose and Tropical Depression #13 do not pose a threat to Florida.

Another briefing packet will be issued Wednesday morning. For more information, visit the NHC website at www.hurricanes.gov.



TROPICAL UPDATE

Created by:

Amy Godsey, Chief State Meteorologist

amy.godsey@em.myflorida.com

State Meteorological Support Unit

Florida Division of Emergency Management

Users wishing to subscribe (approval pending) to this distribution list, register at
https://public.govdelivery.com/accounts/FLDEM/subscriber/new?topic_id=SERT_Met_Tropics.

Other reports available for subscription are available at

<https://public.govdelivery.com/accounts/FLDEM/subscriber/new?preferences=true>