



TROPICAL UPDATE

5 PM EDT

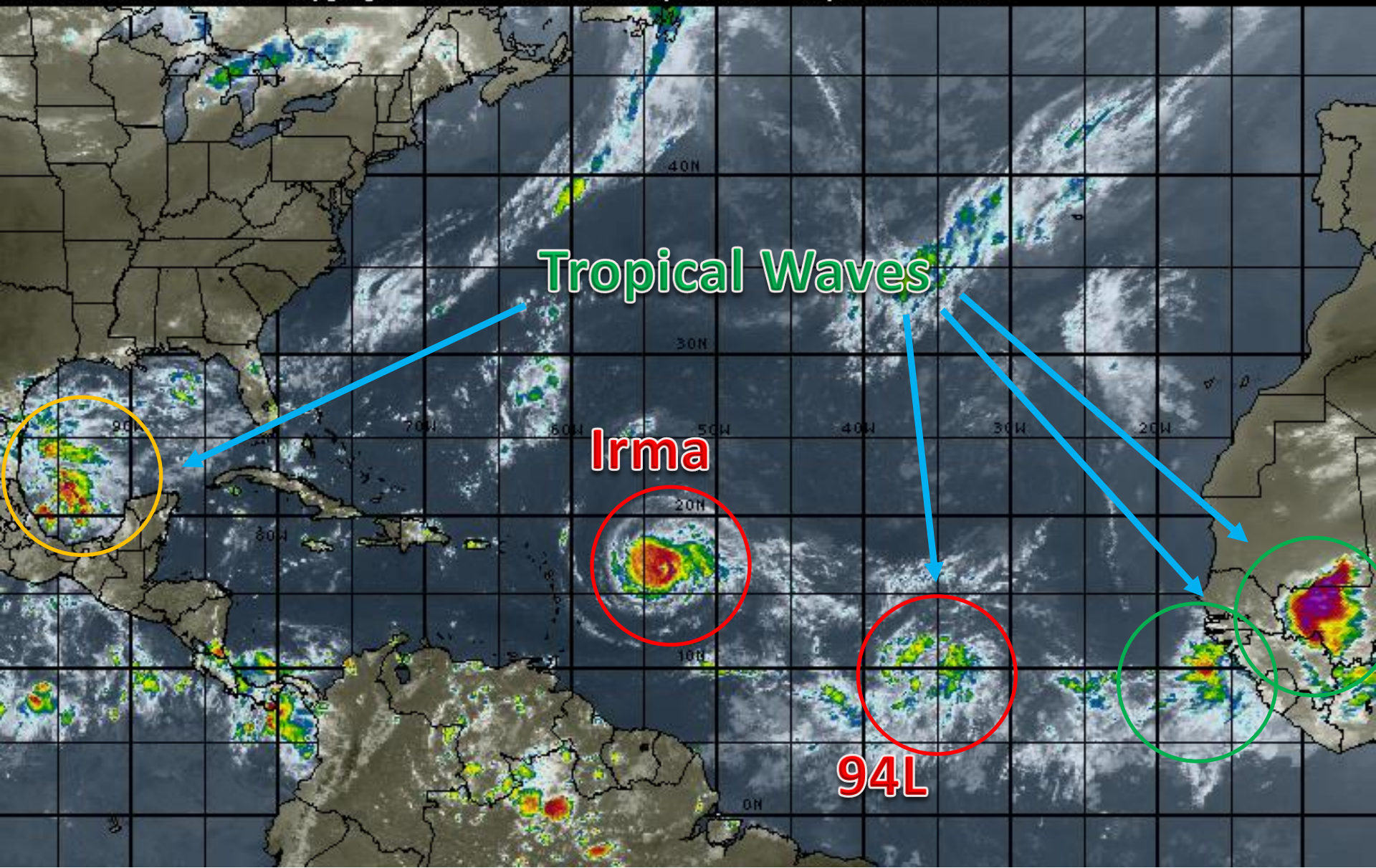
Monday, September 4, 2017

**Major Hurricane Irma, Invest 94L (80%), and
SW Gulf Tropical Wave (50%)**

This update is intended for government and emergency response officials, and is provided for informational and situational awareness purposes only. Forecast conditions are subject to change based on a variety of environmental factors. For additional information, or for any life safety concerns with an active weather event please contact your County Emergency Management or Public Safety Office, local National Weather Service forecast office or visit the National Hurricane Center website at www.nhc.noaa.gov.

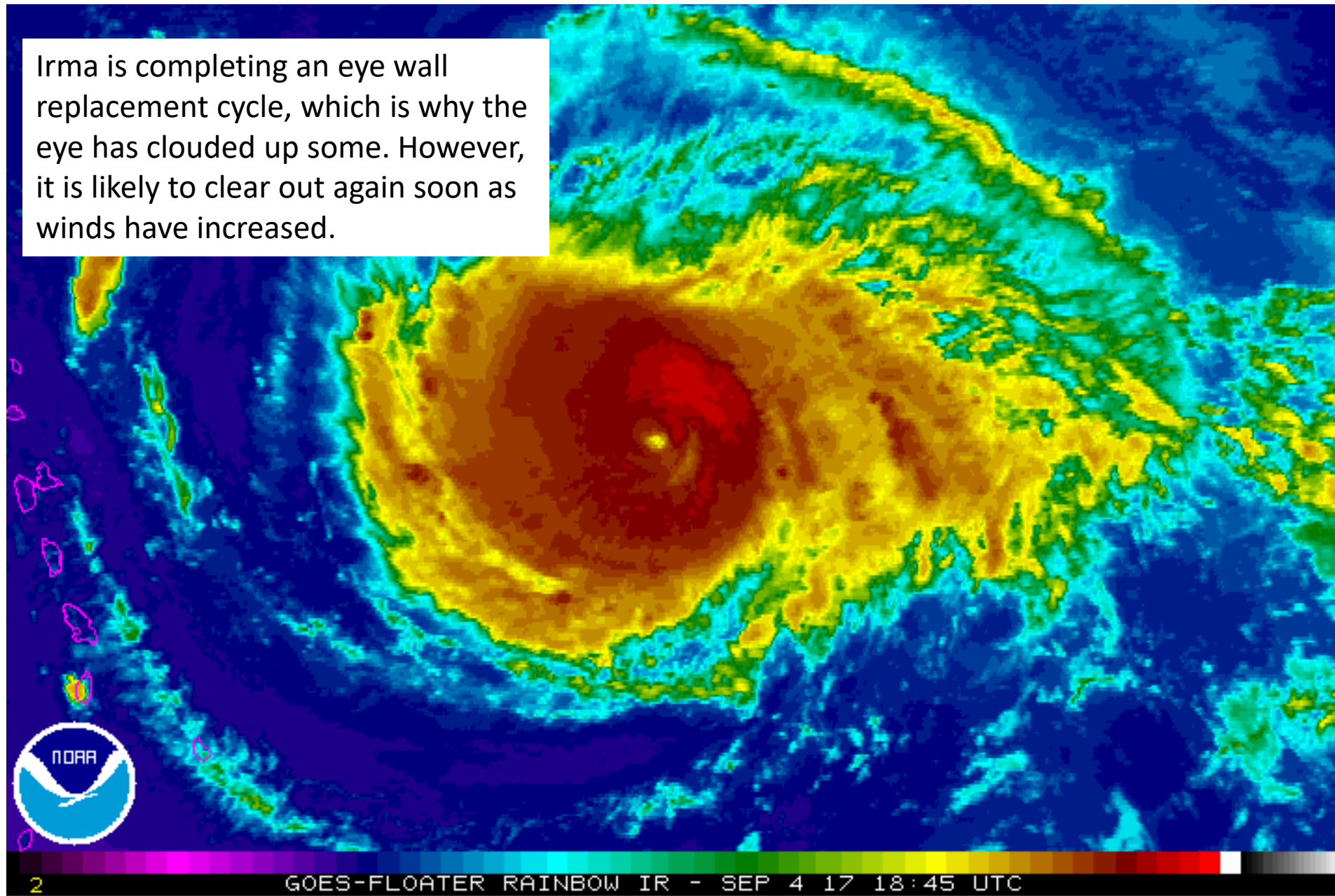
Atlantic Basin Satellite Image

18:00 04-SEP-2017 GMT Copyright © 1998-2016 WSI Corporation <http://www.wsi.com>



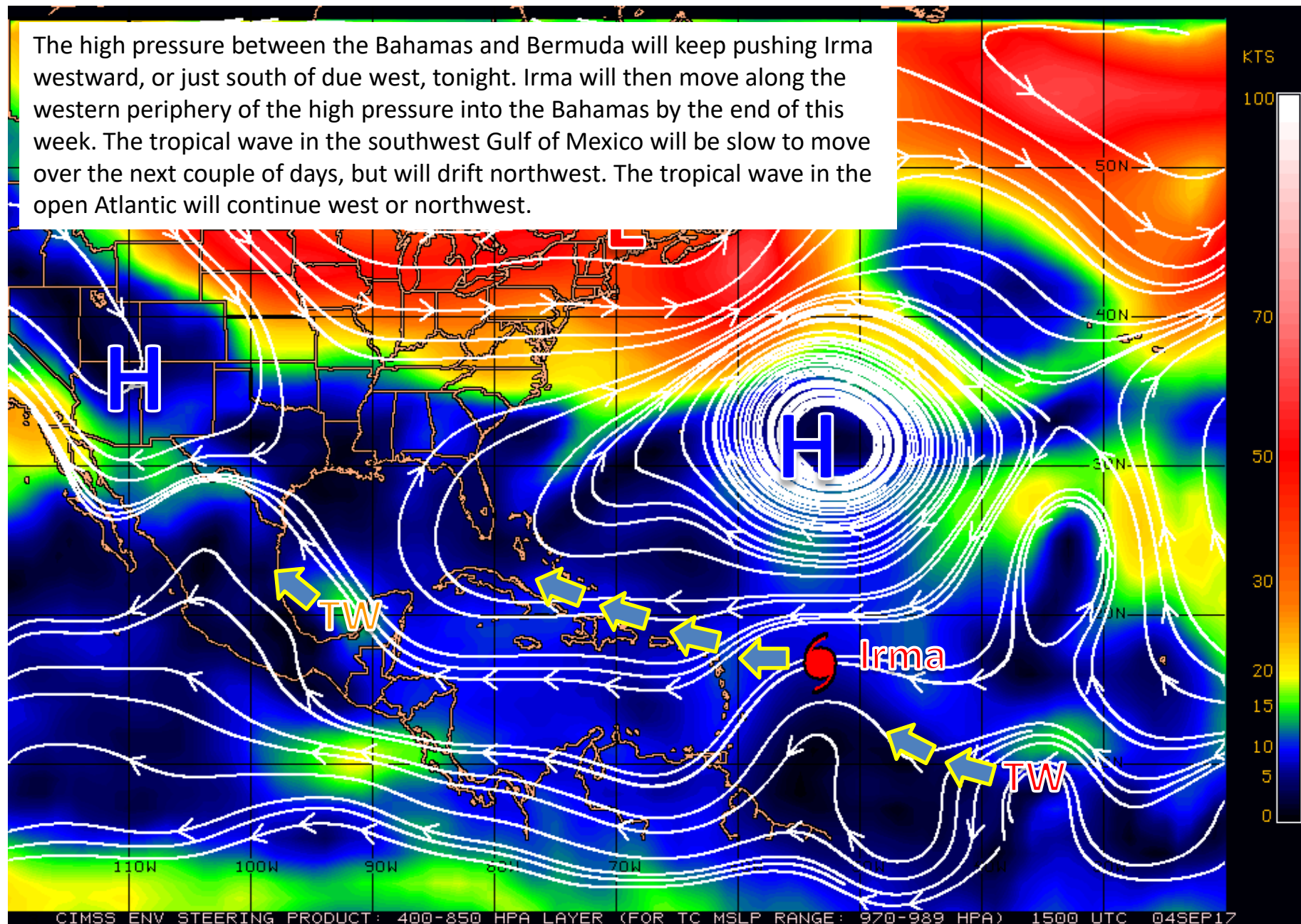
Irma Infrared Satellite Imagery

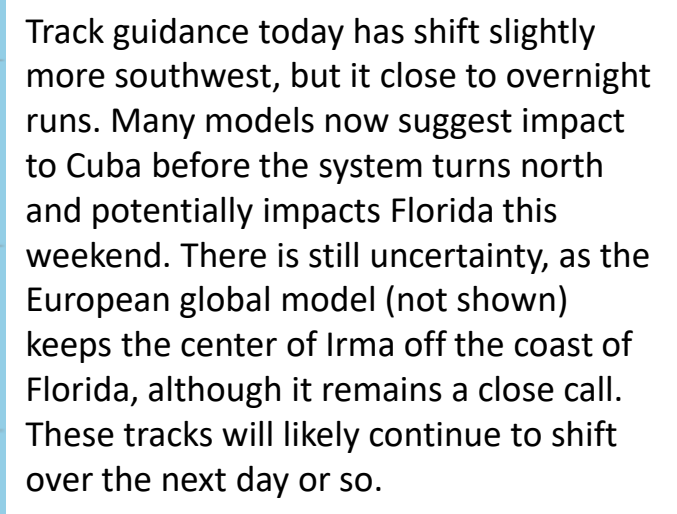
Irma is completing an eye wall replacement cycle, which is why the eye has clouded up some. However, it is likely to clear out again soon as winds have increased.



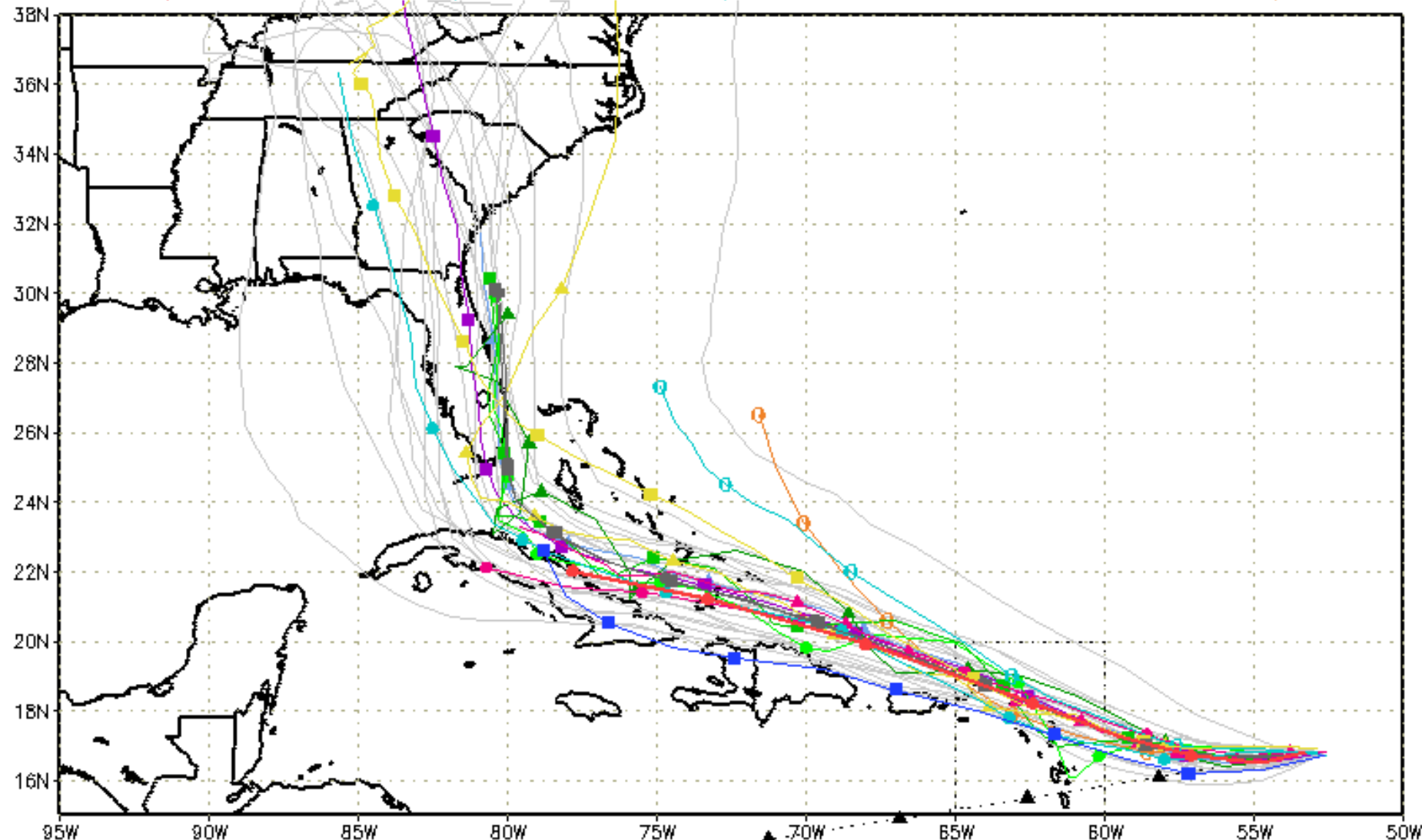
Steering Currents

The high pressure between the Bahamas and Bermuda will keep pushing Irma westward, or just south of due west, tonight. Irma will then move along the western periphery of the high pressure into the Bahamas by the end of this week. The tropical wave in the southwest Gulf of Mexico will be slow to move over the next couple of days, but will drift northwest. The tropical wave in the open Atlantic will continue west or northwest.



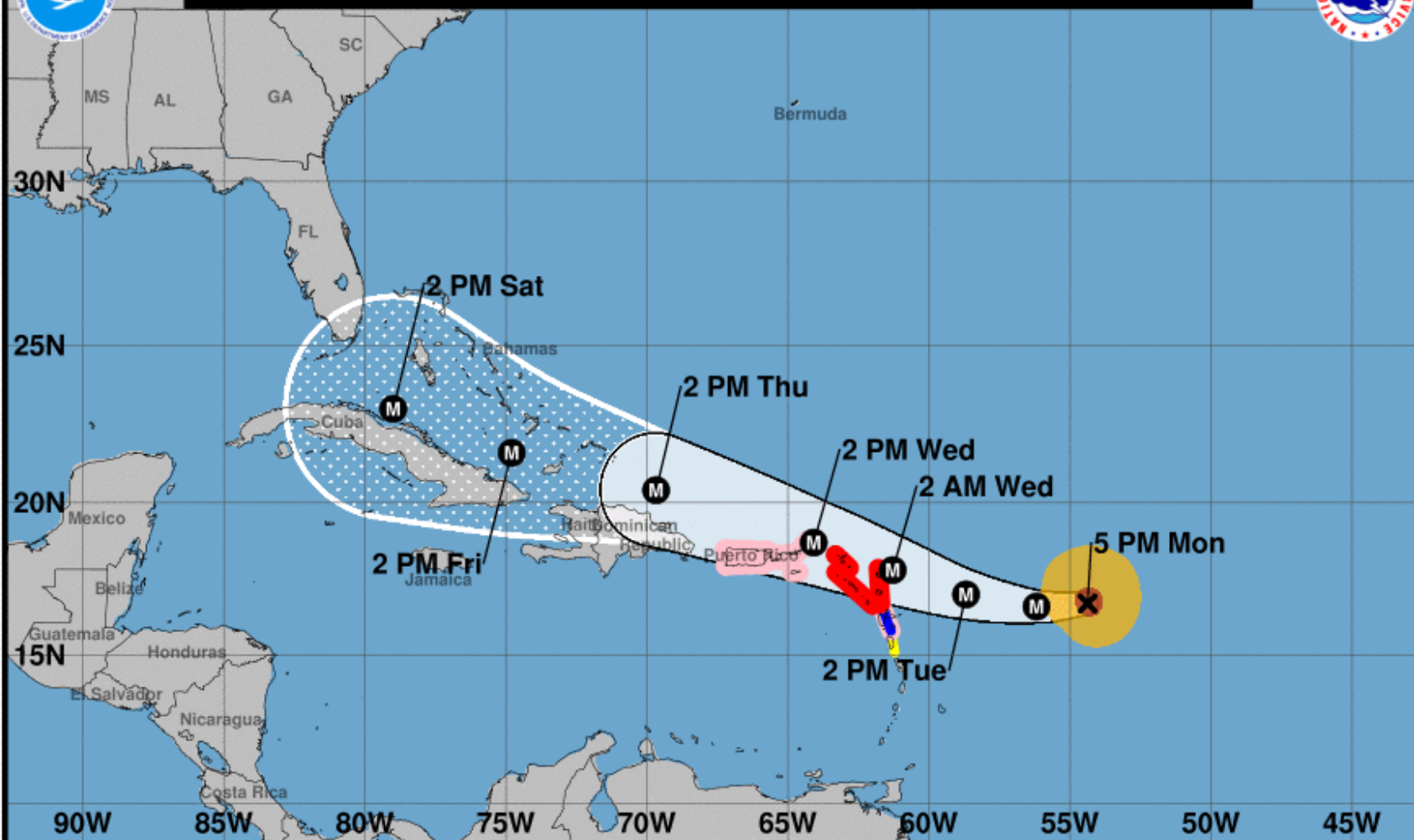
Levi Cowan - tropicaltidbits.com

--▲-- XTRP 04/1800Z ▲ TABD 04/1800Z ▲ HMON 04/1200Z ▲ AVNO 04/1200Z ▲ CMC 04/1200Z
 --■-- TVCN 04/1800Z ■ TABM 04/1800Z ■ GFDN Not Avail ■ AEMN 04/1200Z ■ GEMN 04/1200Z
 --●-- TVCX 04/1800Z ● TABS 04/1800Z ● HWRF 04/1200Z ● APxx 04/1200Z ● UKM 04/1200Z
 --●-- NHC 04/1500Z ● NVGM 04/1200Z ● COTC 04/1200Z ● NAM Not Avail ● CLP5 04/1800Z





Note: The cone contains the probable path of the storm center but does not show the size of the storm. Hazardous conditions can occur outside of the cone.



Hurricane Irma

Monday September 04, 2017

5 PM AST Advisory 22

NWS National Hurricane Center

Current information: x

Center location 16.7 N 54.4 W

Maximum sustained wind 130 mph

Movement W at 13 mph

Forecast positions:

● Tropical Cyclone ○ Post/Potential TC

Sustained winds: D < 39 mph

S 39-73 mph H 74-110 mph M > 110 mph

Potential track area:

Day 1-3 Day 4-5

Watches:

Hurricane Trop Stm

Warnings:

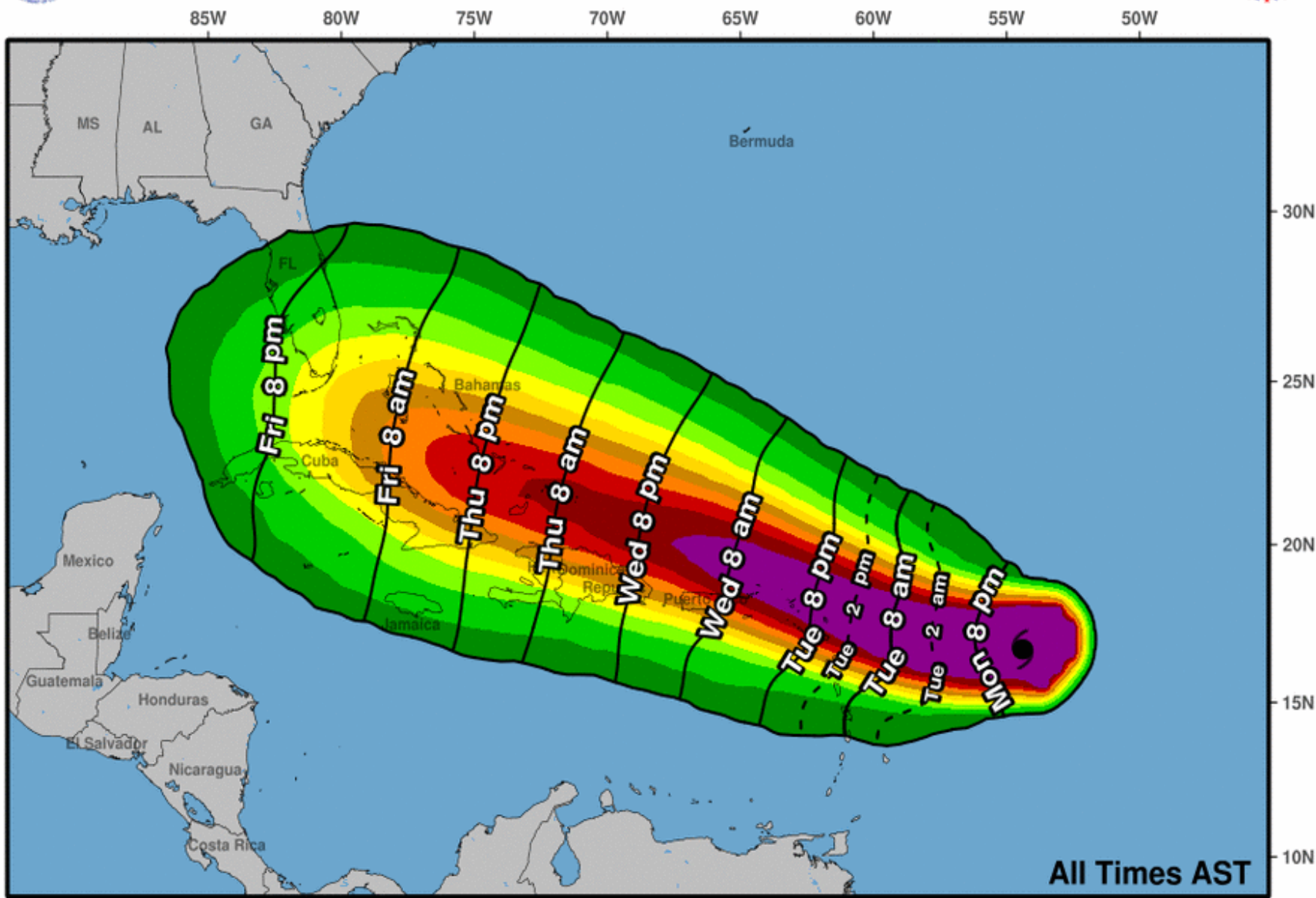
Hurricane Trop Stm

Current wind extent:

Hurricane Trop Stm



Earliest Reasonable Arrival Time of Tropical-Storm-Force Winds



Hurricane Irma
Mon. Sep. 4, 2017 5 pm AST
Advisory 22

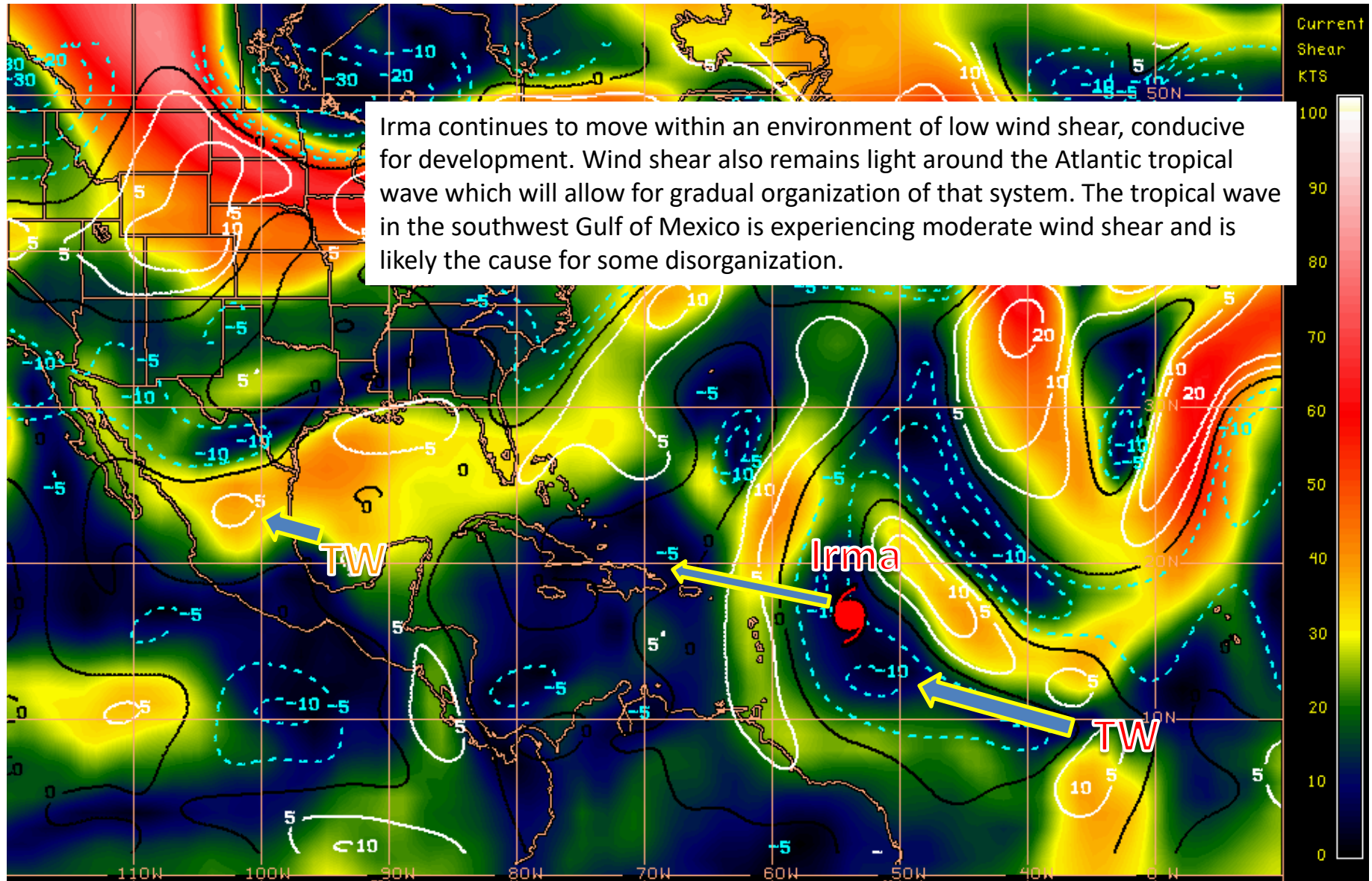
Storm Location &
Wind Speed (knots)
○ <34 ○ 34-63 ● ≥64

Five-day chance of receiving sustained 34+ knot (39+ mph) winds

Chance (%)	Color
5	Green
10	Light Green
20	Yellow-Green
30	Yellow
40	Orange-Yellow
50	Orange
60	Red-Orange
70	Red
80	Dark Red
90	Purple
100	Dark Purple

Current Wind Shear (Shaded) and Shear Tendency (Lines)

Irma continues to move within an environment of low wind shear, conducive for development. Wind shear also remains light around the Atlantic tropical wave which will allow for gradual organization of that system. The tropical wave in the southwest Gulf of Mexico is experiencing moderate wind shear and is likely the cause for some disorganization.

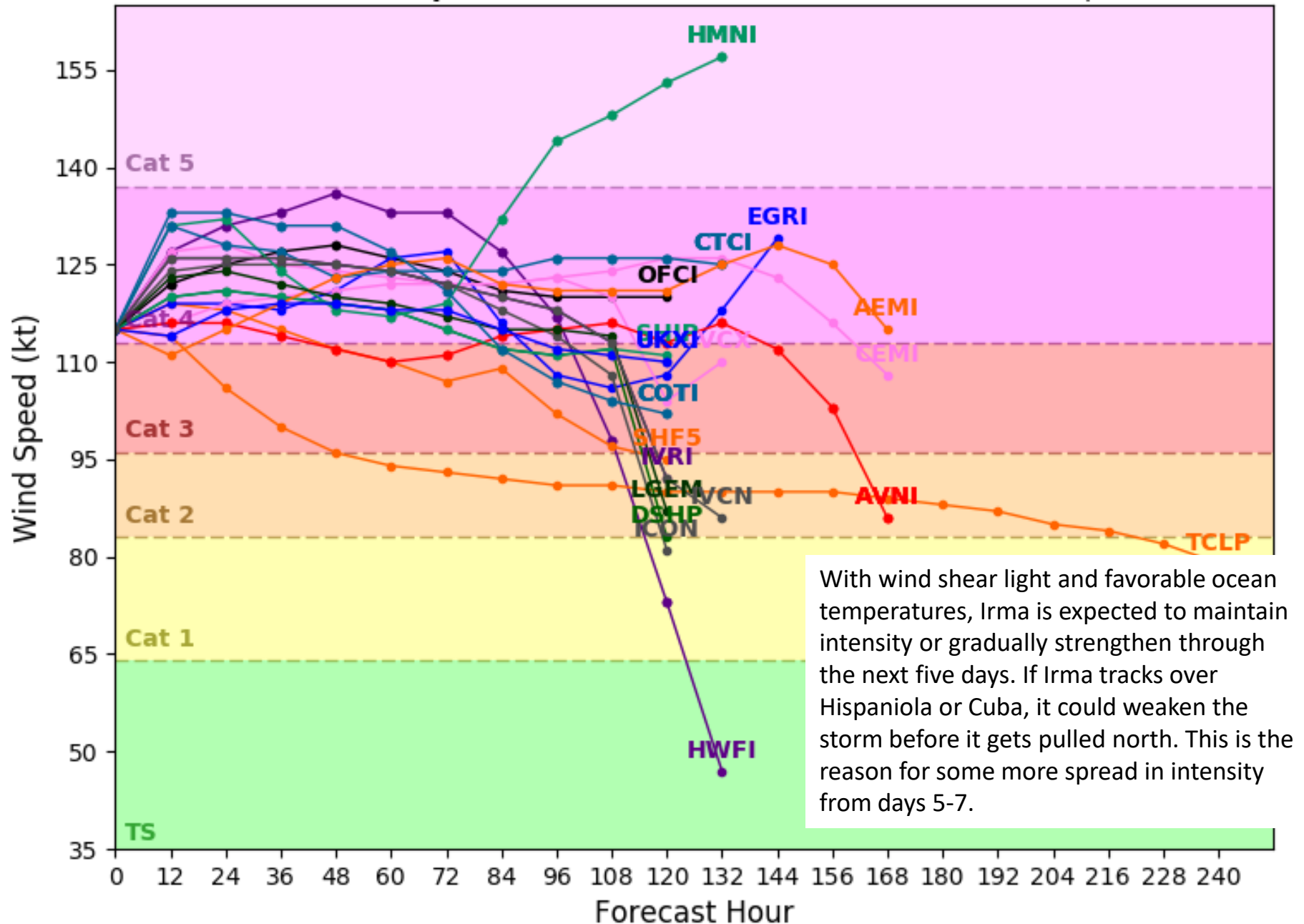


Shear Tendency (KTS) Over Past 24 Hours: Increasing ——— Decreasing - - - -

Hurricane IRMA Model Intensity Guidance

Initialized at 18z Sep 04 2017

Levi Cowan - tropicaltidbits.com





Five-Day Graphical Tropical Weather Outlook

National Hurricane Center Miami, Florida



www.hurricanes.gov

All Disturbances

- * Formation chance through 48 hours...**medium...40 percent.**
* Formation chance through 5 days...**high...80 percent.**
- * Formation chance through 48 hours...**medium...40 percent.**
* Formation chance through 5 days...**medium...50 percent.**

2. 50%

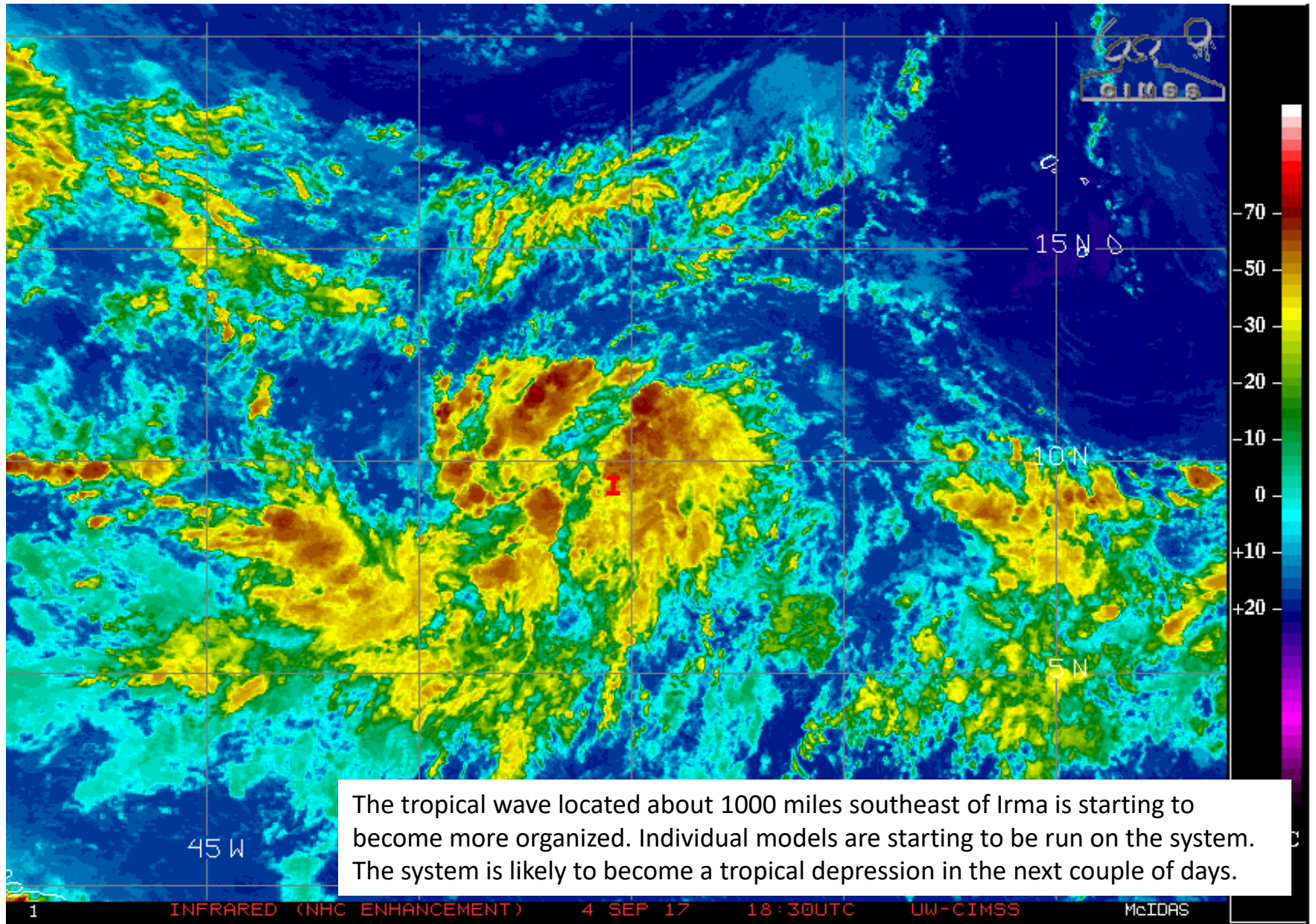
IRMA

1. 80%

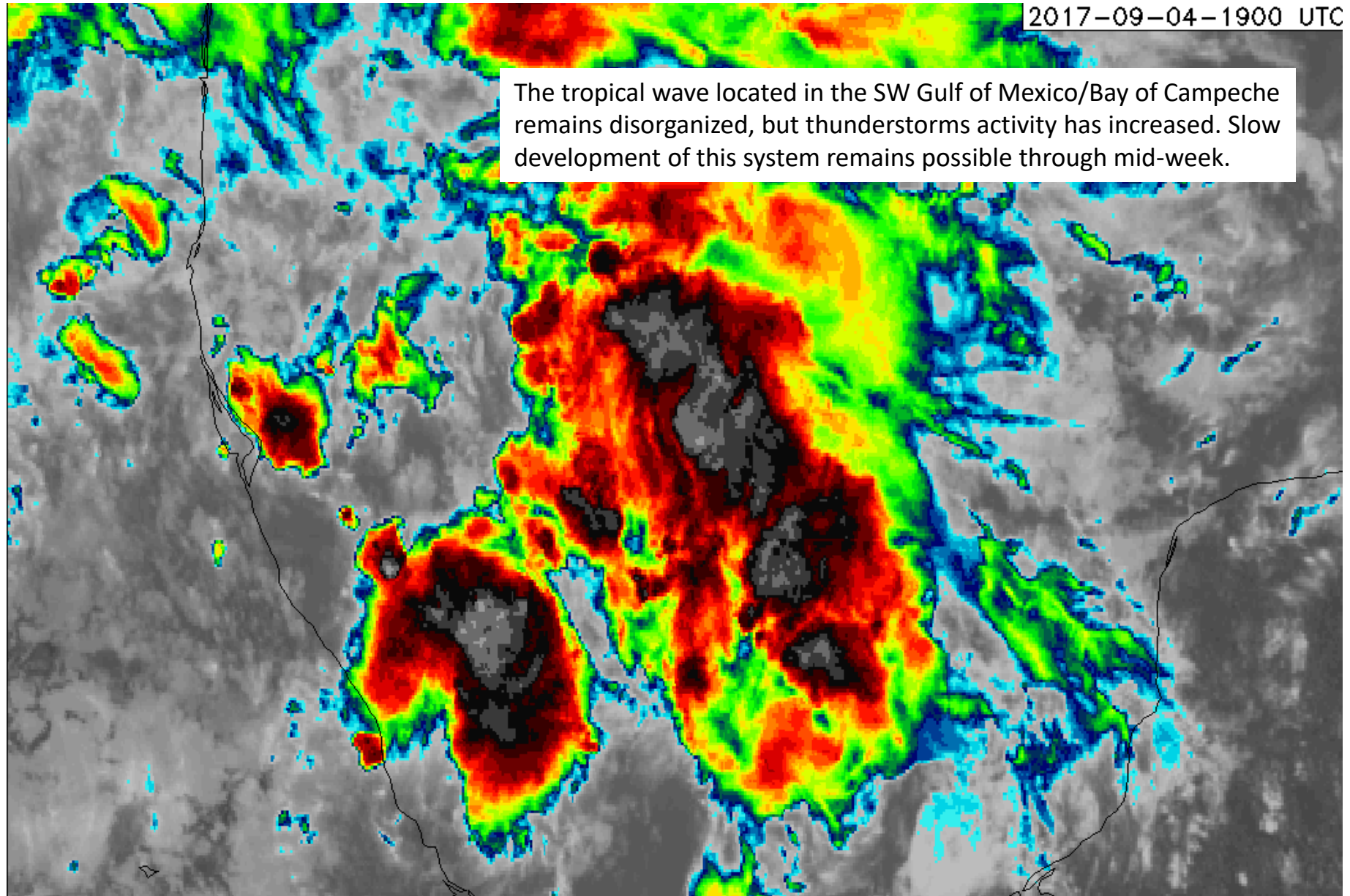
2:00 pm EDT
Mon Sep 4 2017

Current Disturbances and Five-Day Cyclone Formation Chance: < 40% 40-60% > 60%
Tropical or Sub-Tropical Cyclone: Depression Storm Hurricane
 Post-Tropical Cyclone Remnants

Satellite Image of Invest 94L



Satellite Image of SW Gulf Tropical Wave



Summary

- At 5pm EDT, Hurricane Irma was located about 490 miles east of the Leeward Islands, or about 1,750 miles east-southeast of Miami, and was moving west at 13 mph.
- Maximum sustained winds are near 130 mph, making Irma a category 4 storm on the Saffir-Simpson scale. It is expected to maintain strength or gradually strengthen over the next couple days due to low wind shear and favorable sea-surface temperatures.
- Irma is expected to continue west tonight and then west-northwest tomorrow. Irma will move into the Turks and Caicos and eastern Bahamas on Friday. This weekend, Irma is expected to turn northward as it interacts with a trough across the eastern United States.
- Exactly when the turn northward occurs is still being debated by the models. A later turn would mean more impacts to Florida. However, it could also mean Irma interacts with the mountainous terrain of Cuba and Hispaniola.
- Hurricane hunter aircraft will continue to investigate the system regularly through the week.
- A tropical wave southeast of Irma by some 1,000 miles in the tropical Atlantic Ocean, now being referred to as Invest Area 94L, is producing showers and thunderstorms this afternoon.
- Conditions are expected to be favorable for development, and it could become a tropical depression in the next couple of days as it continues moving west or northwest over the tropical Atlantic.
- The NHC has given this disturbance a 40% (medium) chance of development over the next 48 hours and an 80% (high) chance of development over the next five days.
- A tropical wave in the southwestern Gulf of Mexico is producing disorganized showers and thunderstorms. Moderate amounts of wind shear are limiting development, but the system has become more organized today and may develop by mid-week.
- The NHC has given this disturbance a 40% (medium) chance of development over the next 48 hours and a 50% (medium) chance of development over the next five days.
- The next names on the list are Jose and Katia.

Florida Outlook

- The tropical wave in the southwestern Gulf of Mexico does not pose a direct threat to Florida.
- The tropical wave in the open, tropical Atlantic, now being referred to as Invest Area 94L, does not pose a threat to Florida during the 7-10 days. This system is likely to remain out to sea but will be monitored.
- Irma does not pose a direct threat to Florida through Friday.
- Wave heights will begin to increase along the East Coast of Florida Thursday and into the weekend. The rip current risk will also begin to rise. These impacts are a definite, even if Irma remains a couple hundred miles off the coast.
- It is too early to speculate on other impacts from Irma (rainfall amounts, winds, storm surge, etc.). These details will begin to come into line likely within the next 48 hours. How close Irma gets to Florida before the turn north remains the key part of this forecast that still needs to be nailed down. Small shifts can make a big difference in wind and surge impacts.
- No part of Florida is currently in the National Hurricane Center's 5-day cone for Hurricane Irma. If the current forecast does not change, parts of South Florida may begin to enter the day 5 portion of the cone late tonight or tomorrow.

Another briefing packet will be issued on Tuesday morning. For more information, visit the NHC website at www.hurricanes.gov.



TROPICAL UPDATE

Created by:

Michael Spagnolo, Deputy State Meteorologist
michael.spagnolo@em.myflorida.com

State Meteorological Support Unit

Florida Division of Emergency Management

Users wishing to subscribe (approval pending) to this distribution list, register at
https://public.govdelivery.com/accounts/FLDEM/subscriber/new?topic_id=SERT_Met_Tropics.
Other reports available for subscription are available at
<https://public.govdelivery.com/accounts/FLDEM/subscriber/new?preferences=true>