



TROPICAL UPDATE

10 AM EDT

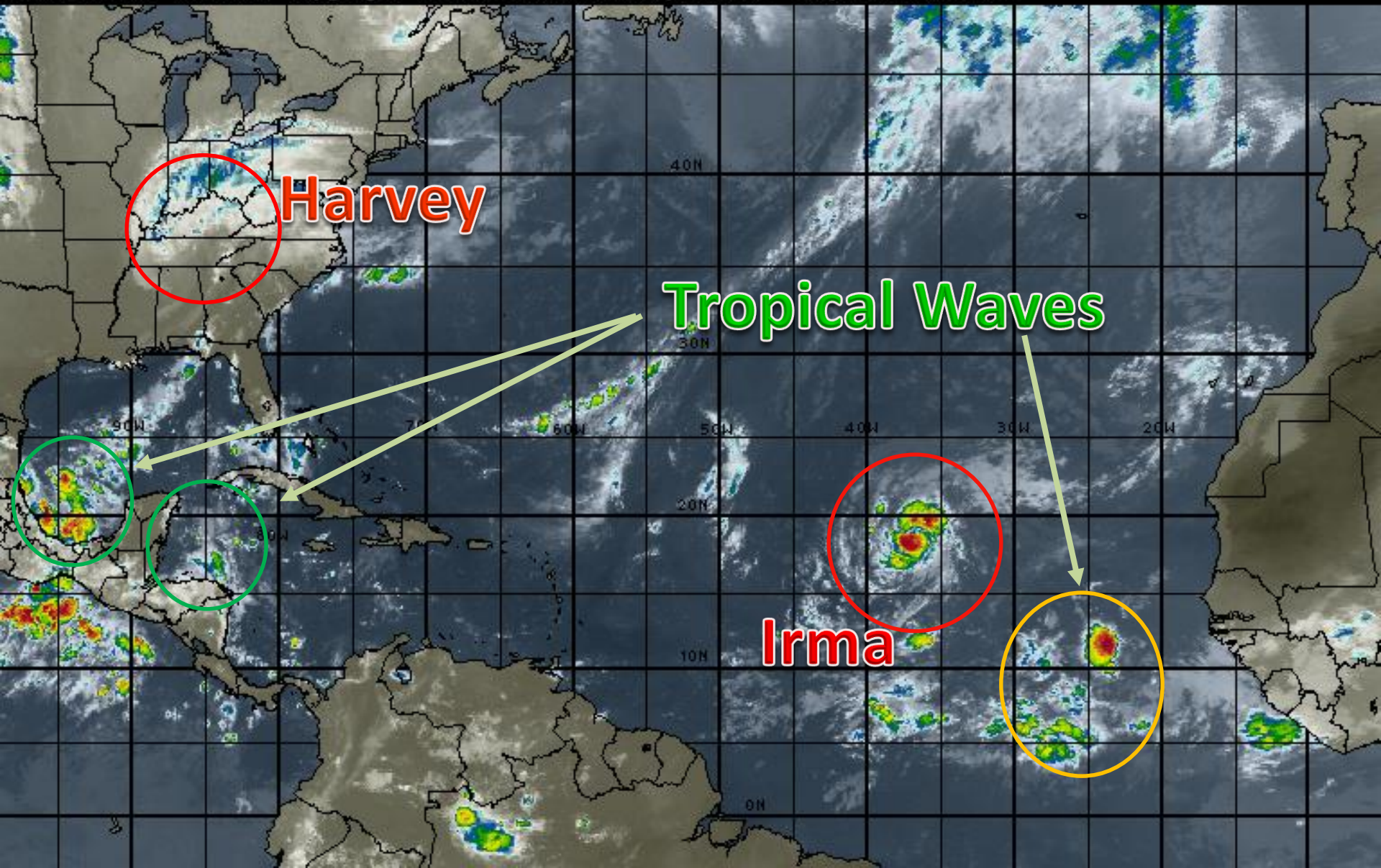
Friday, September 1, 2017

**Major Hurricane Irma & African Tropical Wave
(50%)**

This update is intended for government and emergency response officials, and is provided for informational and situational awareness purposes only. Forecast conditions are subject to change based on a variety of environmental factors. For additional information, or for any life safety concerns with an active weather event please contact your County Emergency Management or Public Safety Office, local National Weather Service forecast office or visit the National Hurricane Center website at www.nhc.noaa.gov.

Atlantic Basin Satellite Image

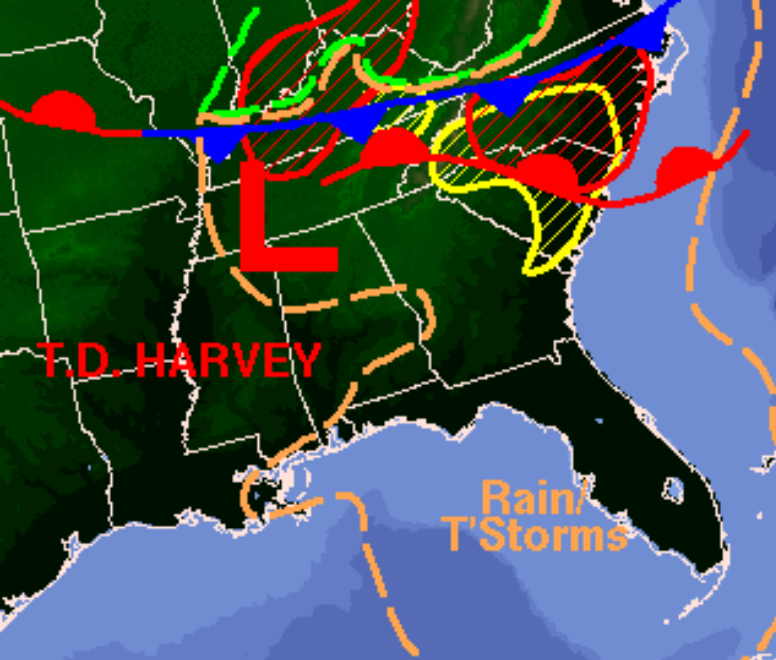
12:00 01-SEP-2017 GMT Copyright © 1998-2016 WSI Corporation <http://www.wsi.com>



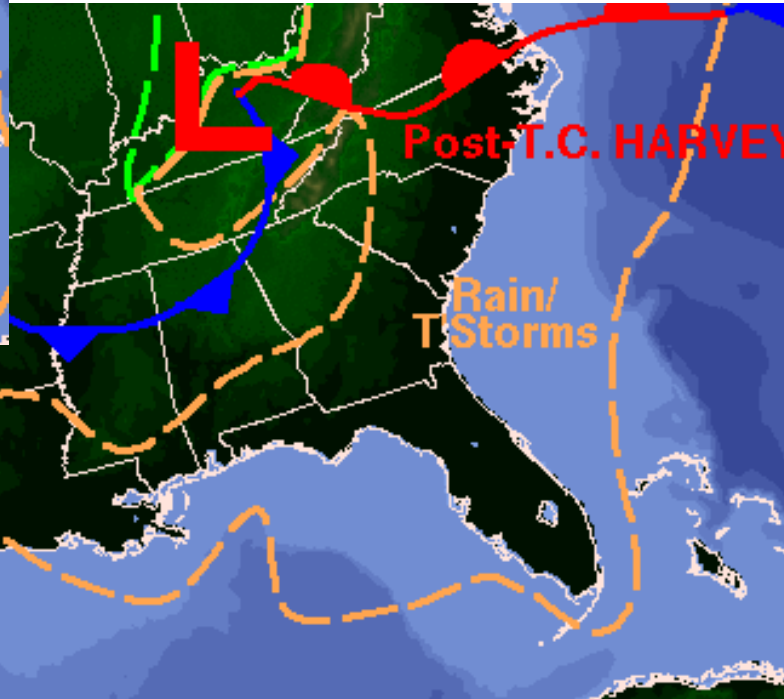
Observed Rainfall – Past 24 Hours



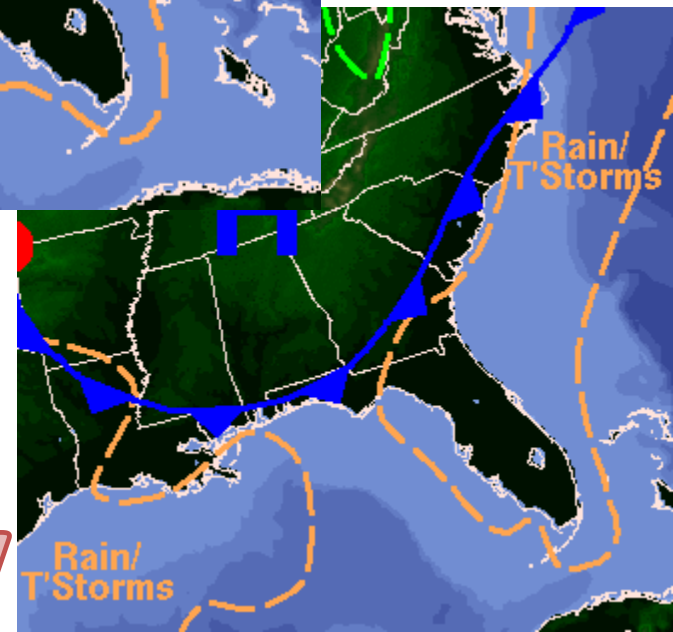
Forecast Weather Maps



Friday

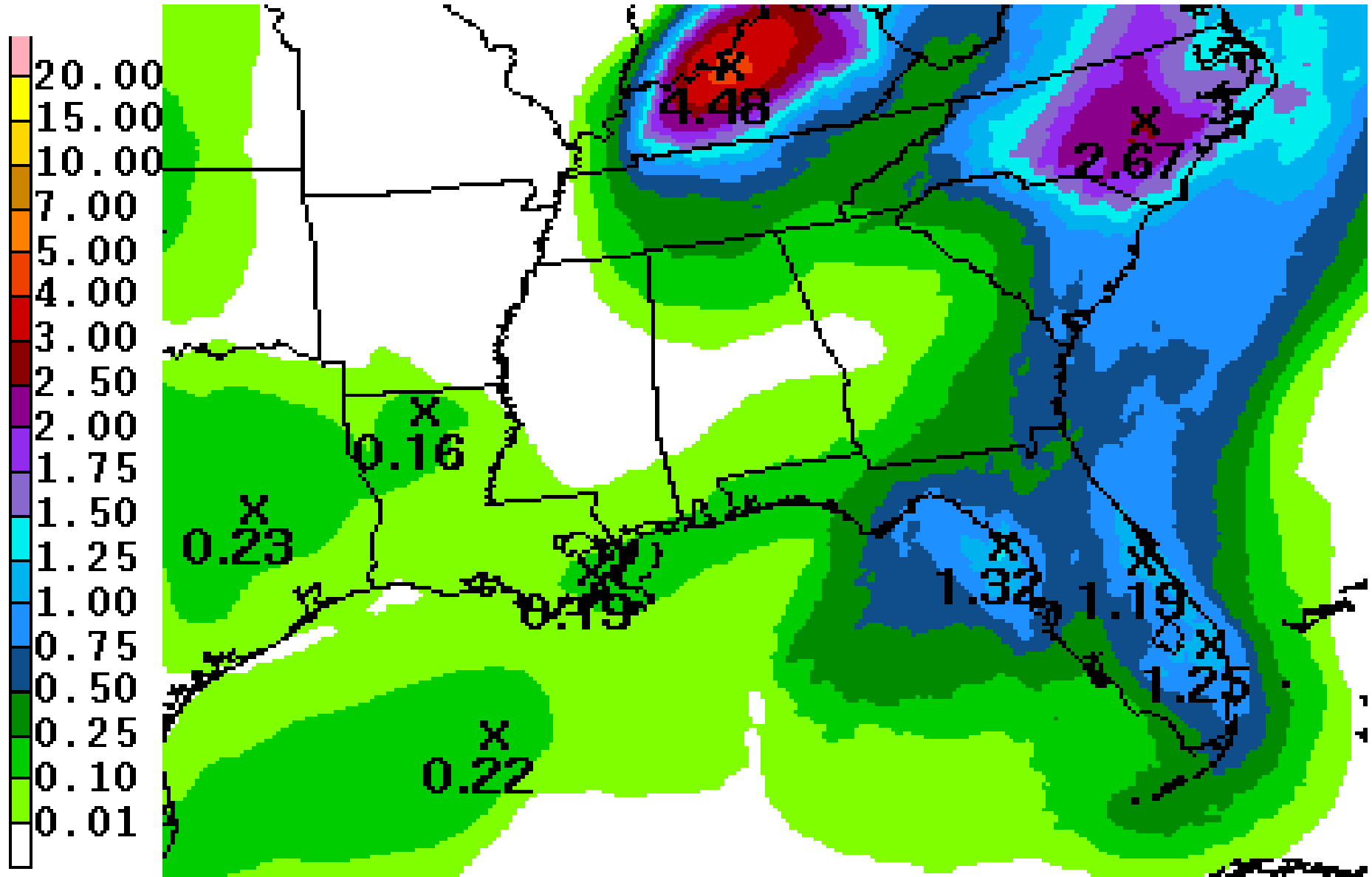


Saturday

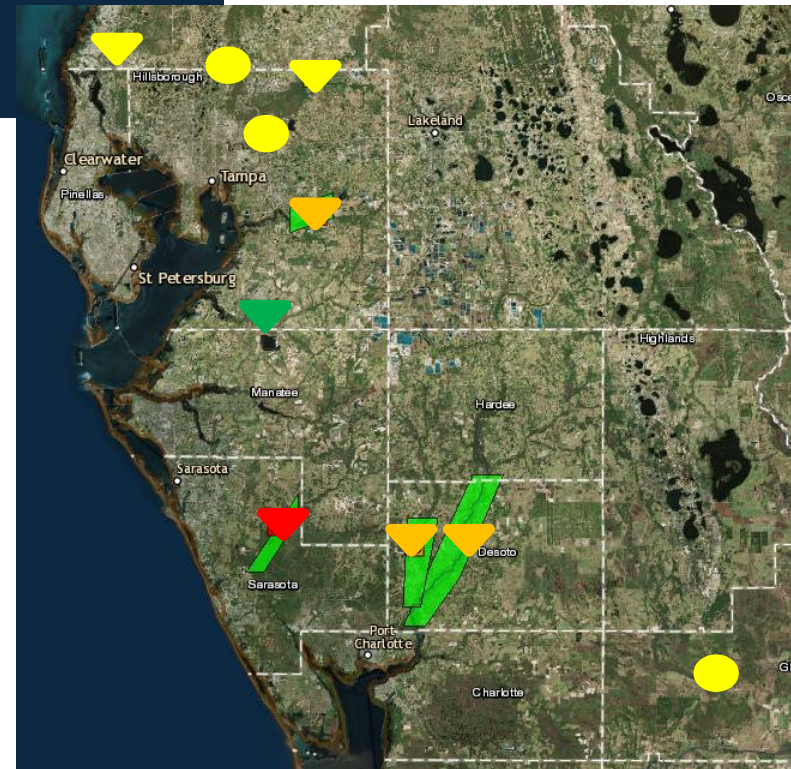
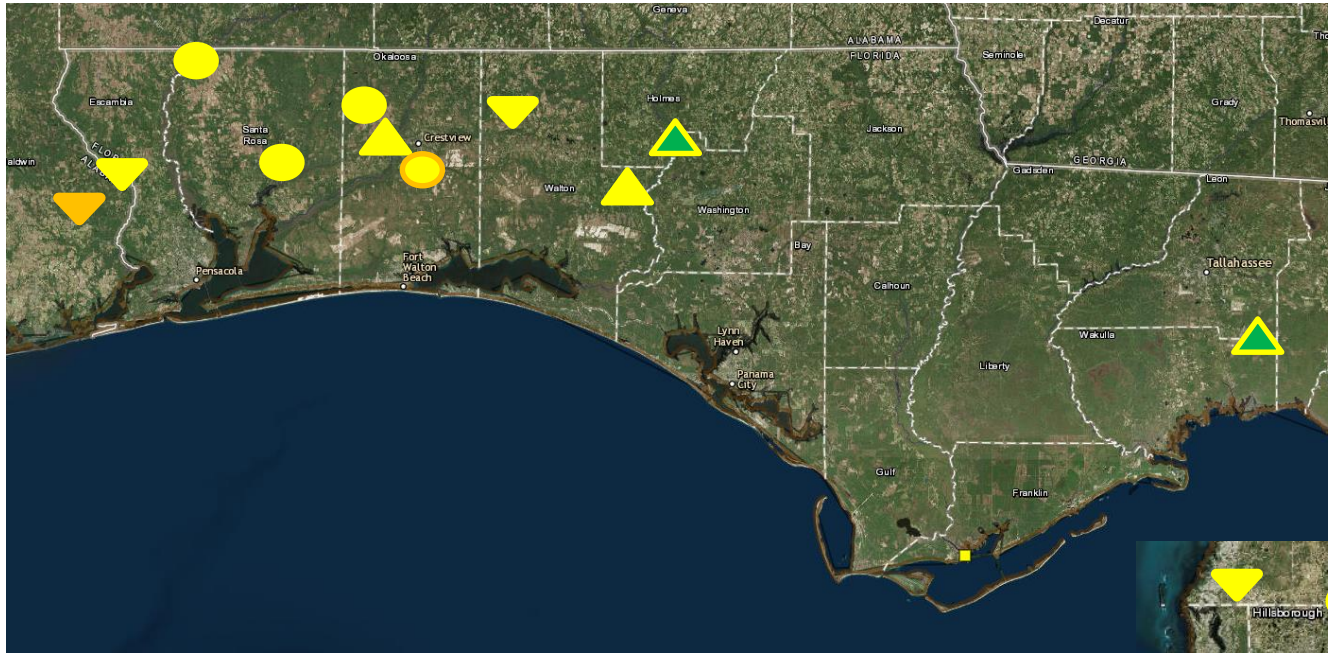


Sunday

3 Day Cumulative Forecast Rainfall (does not account for isolated higher totals)

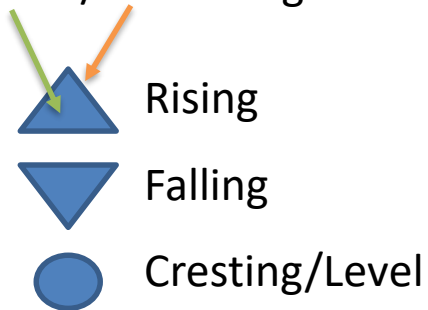


River Flood Outlook



Current / Crest Stage

- No Flood
- Action Stage
- Minor Flood
- Moderate Flood
- Major Flood



Hurricane Irma

5 AM EDT Fri Sep 01 2017

Position 18.2 N 36.5 W

Maximum Winds 115 mph

Gusts 140 mph

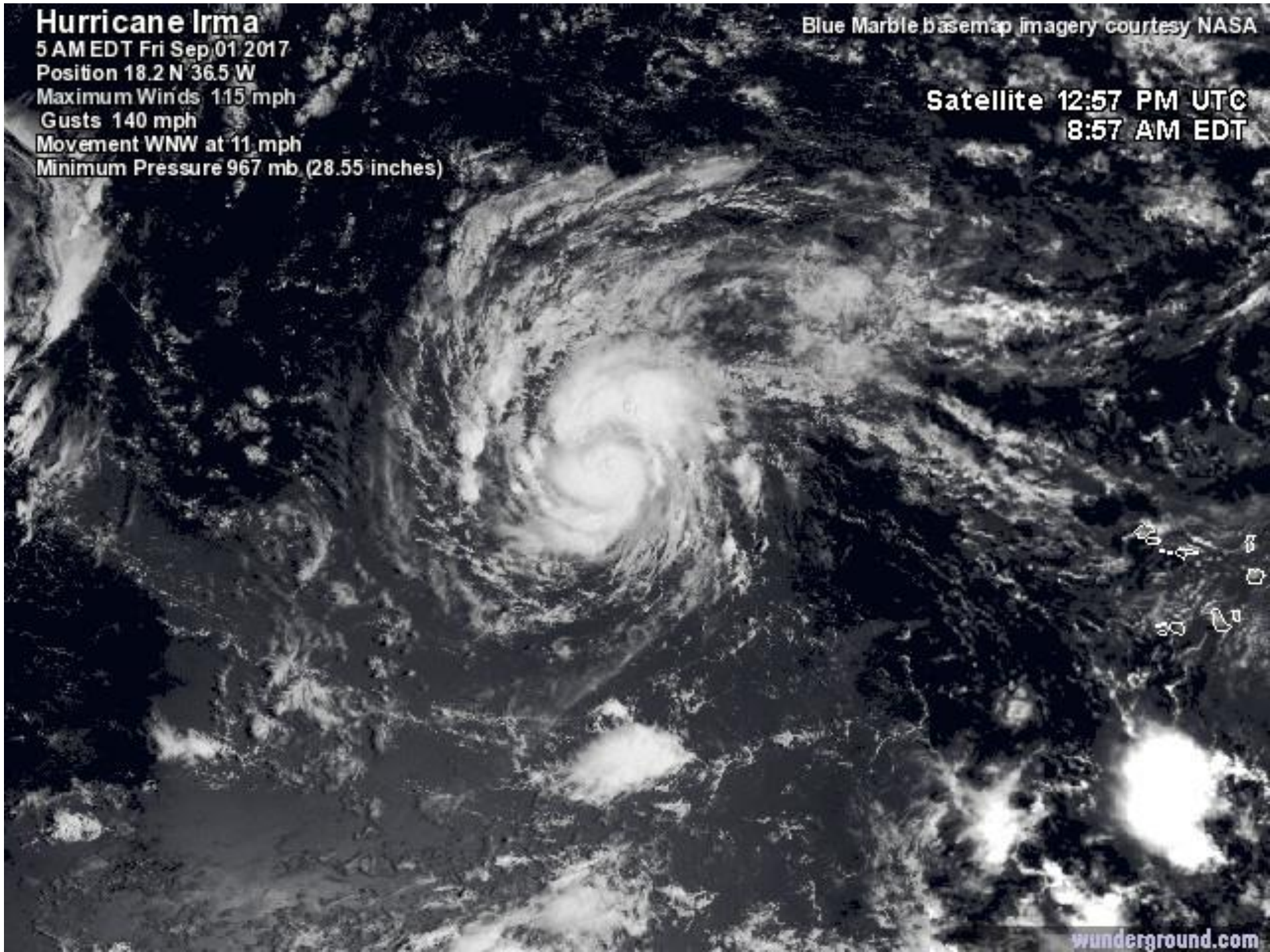
Movement WNW at 11 mph

Minimum Pressure 967 mb (28.55 inches)

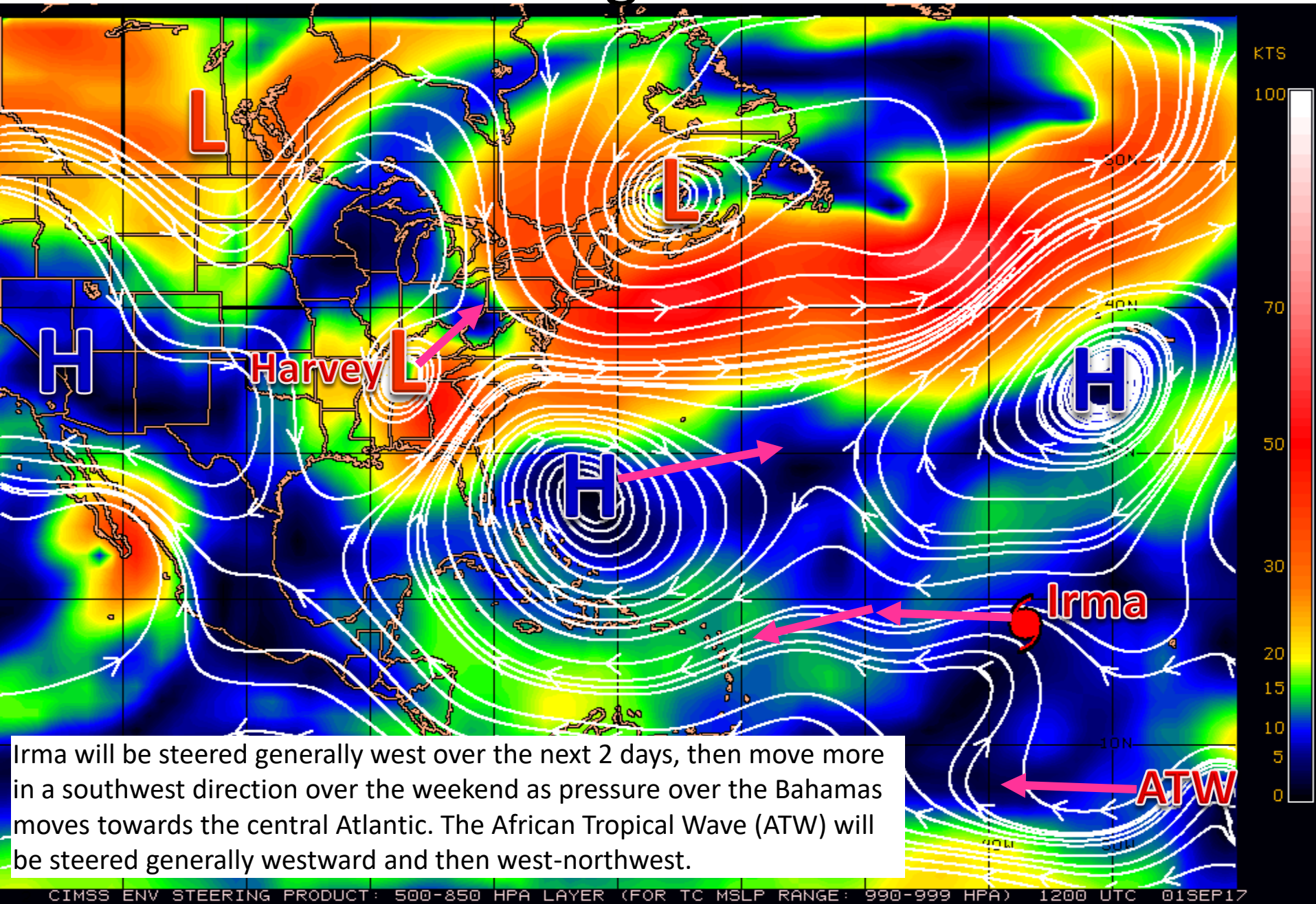
Blue Marble basemap imagery courtesy NASA

Satellite 12:57 PM UTC

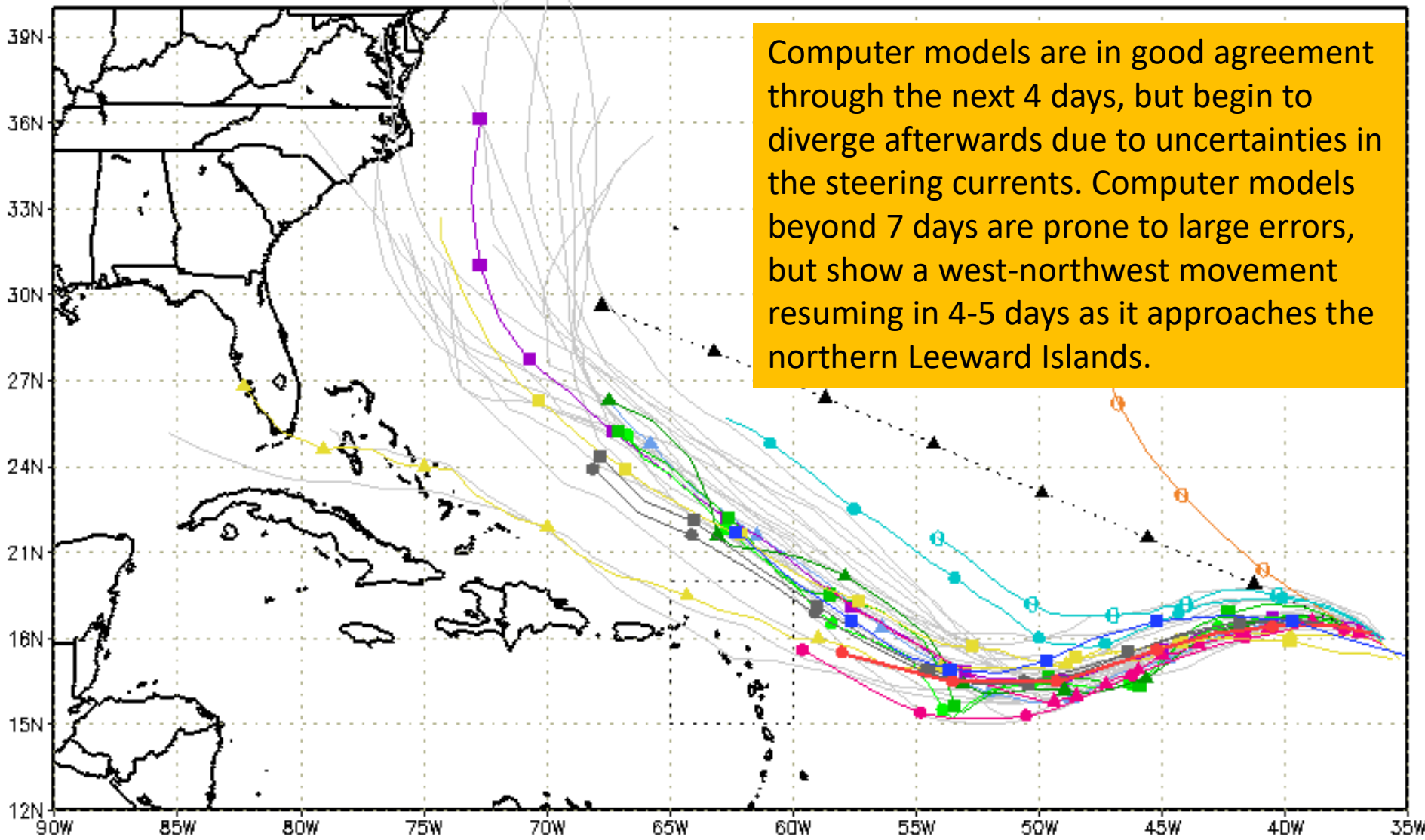
8:57 AM EDT



Steering Currents

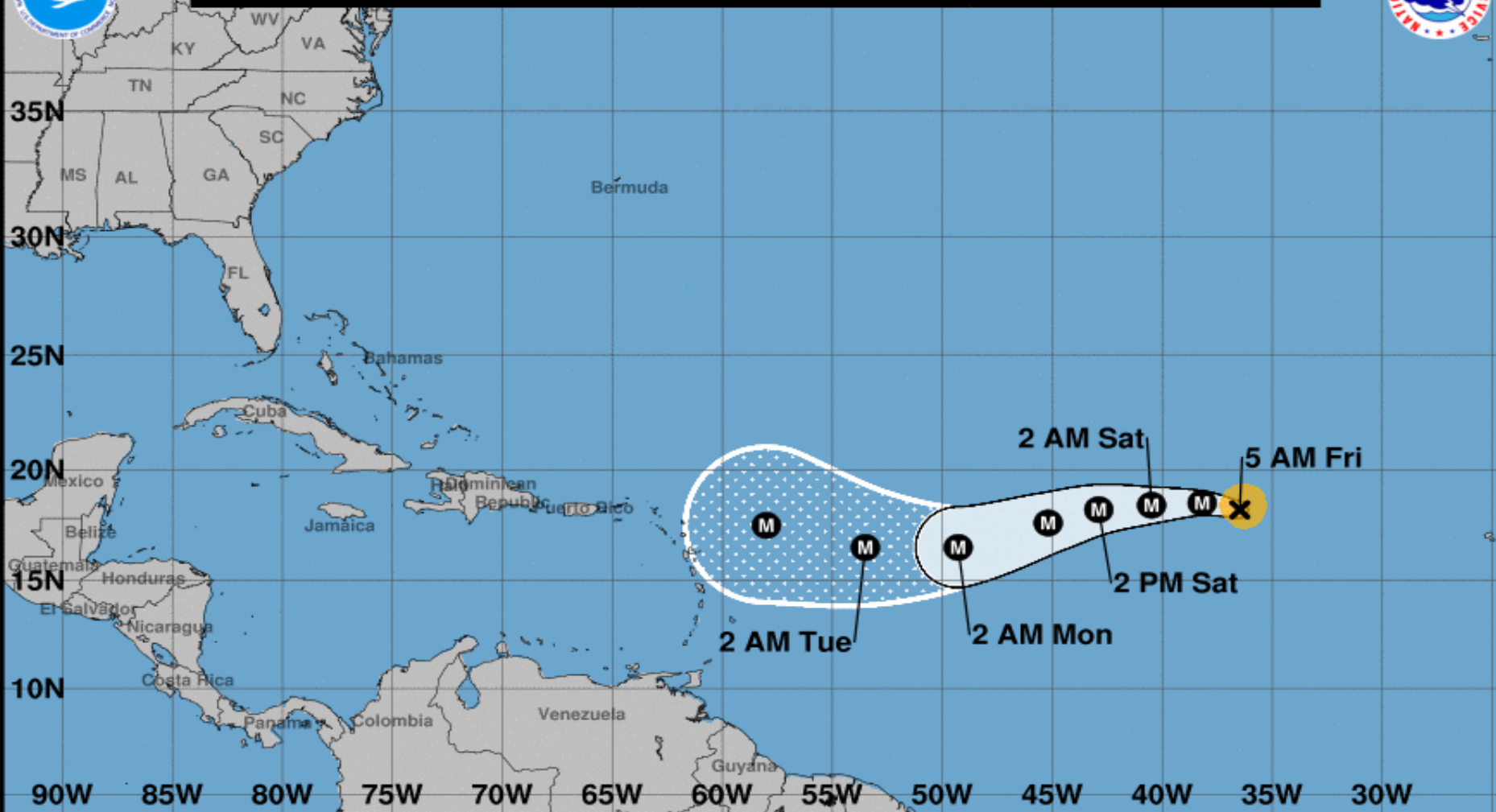


--▲-- XTRP 01/1200Z ▲ TABD 01/1200Z ▲ HMON 01/0600Z ▲ AVNO 01/0600Z ▲ CMC 01/0000Z
 ■ TVCN 01/1200Z ■ TABM 01/1200Z ■ GFDL Not Avail ■ AEMN 01/0600Z ■ GEMN 01/0000Z
 ● TVCX 01/1200Z ● TABS 01/1200Z ● HWRF 01/0600Z ● APxx 01/0600Z ● UKM 01/0000Z
 ● NHC 01/0900Z ● NVGM 01/0600Z ● COTC 01/0600Z ● NAM Not Avail ● CLP5 01/1200Z





Note: The cone contains the probable path of the storm center but does not show the size of the storm. Hazardous conditions can occur outside of the cone.



Hurricane Irma

Friday September 01, 2017

5 AM AST Advisory 8

NWS National Hurricane Center

Current information: x

Center location 18.2 N 36.5 W

Maximum sustained wind 115 mph

Movement WNW at 12 mph

Forecast positions:

● Tropical Cyclone ○ Post/Potential TC

Sustained winds: D < 39 mph

S 39-73 mph H 74-110 mph M > 110 mph

Potential track area:

Day 1-3 Day 4-5

Watches:

Hurricane Trop Stm

Warnings:

Hurricane Trop Stm

Current wind extent:

Hurricane Trop Stm



Hurricane Irma
Fri. Sep. 1, 2017 5 am AST
Advisory 8

**Storm Location &
Wind Speed (knots)**

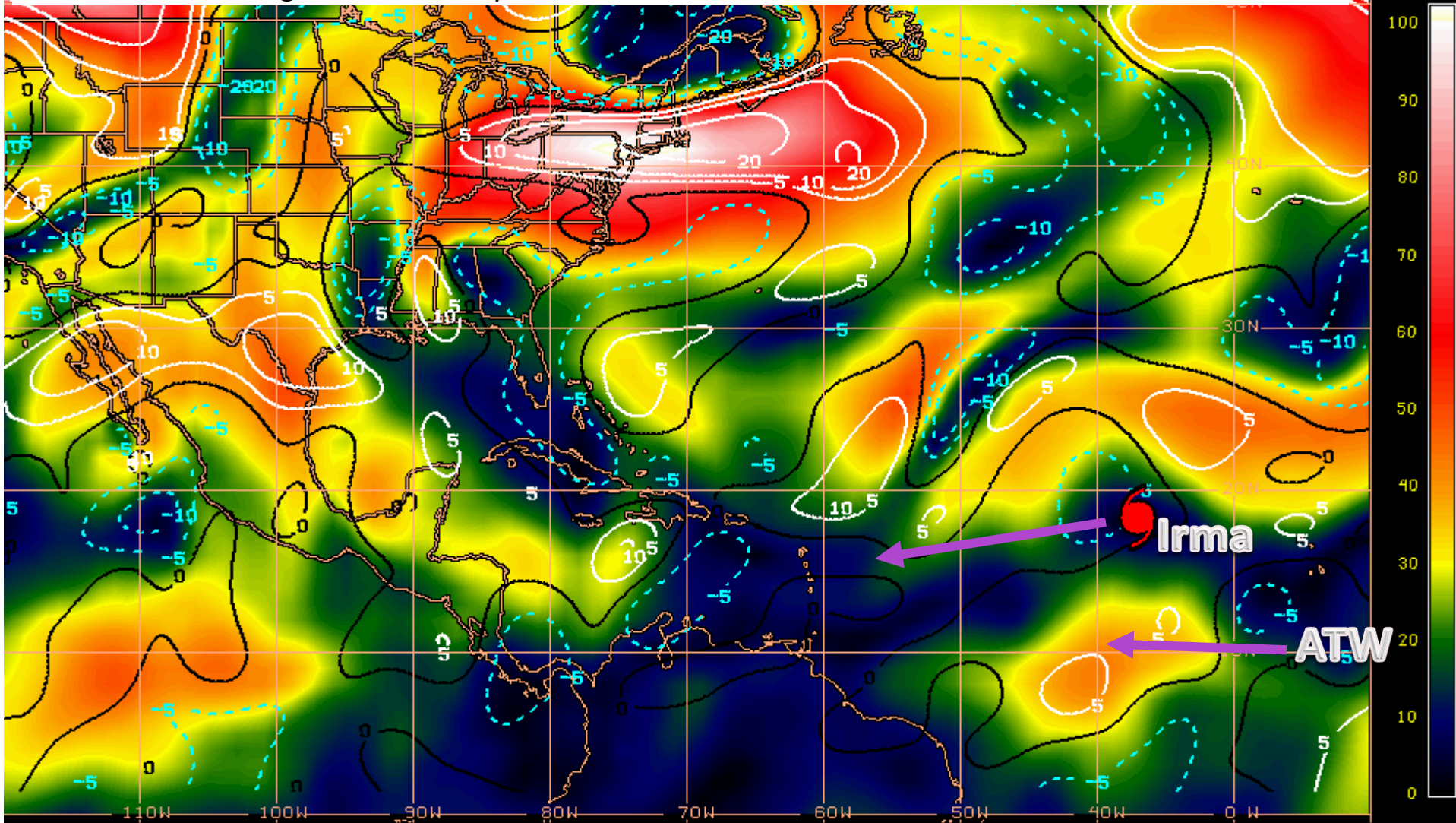
○ <34 ◐ 34-63 ● ≥64

Five-day chance of receiving sustained 34+ knot (39+ mph) winds



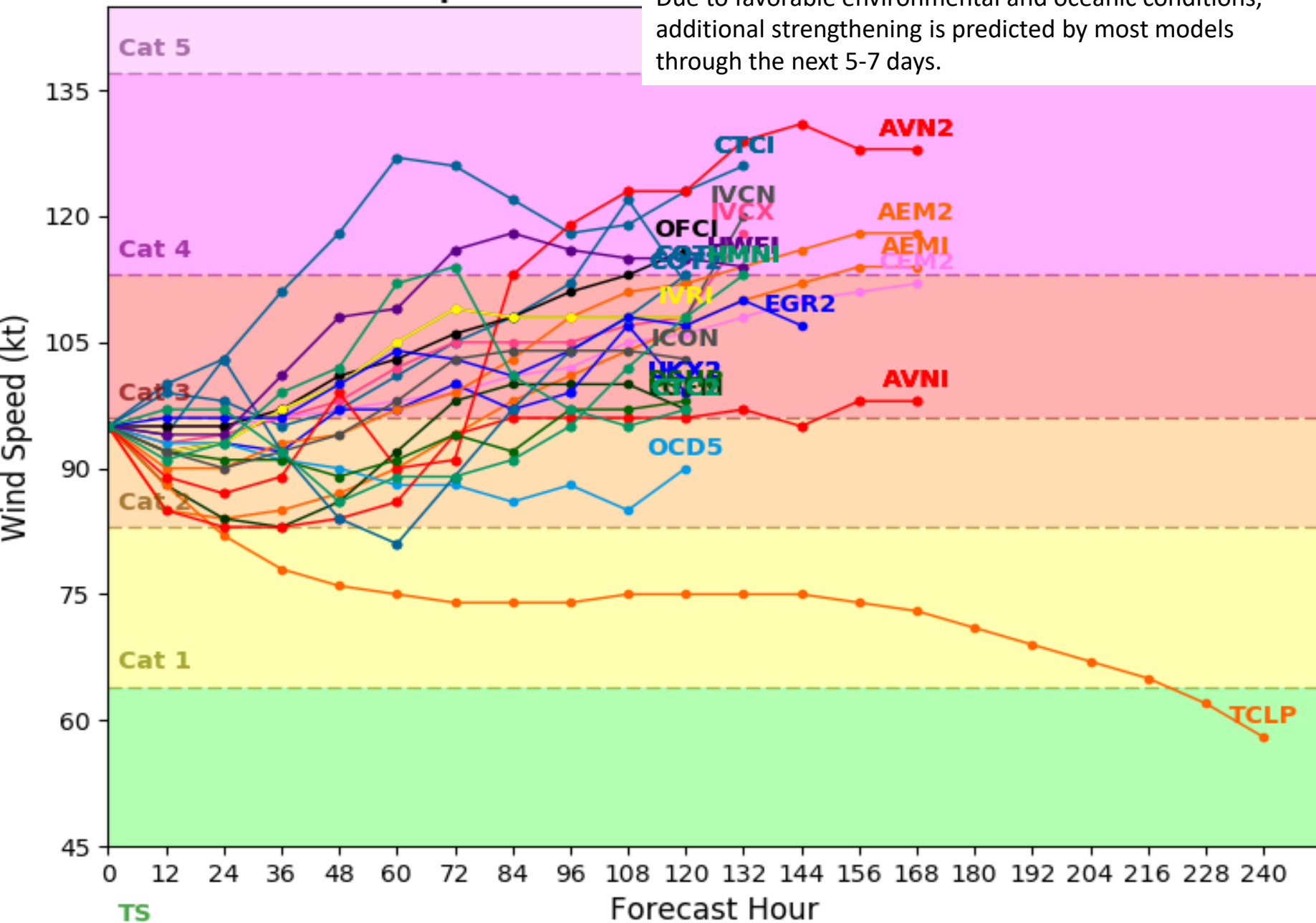
Current Wind Shear (shaded) and Shear Tendency (lines)

A relatively low shear environment in the path of Irma and the African Tropical wave will promote intensification through the next 5 days.



Shear Tendency (KTS) Over Past 24 Hours: Increasing — Decreasing ----

Due to favorable environmental and oceanic conditions, additional strengthening is predicted by most models through the next 5-7 days.





Five-Day Graphical Tropical Weather Outlook

National Hurricane Center Miami, Florida



www.hurricanes.gov

All Disturbances

HARVEY

IRMA

Formation chance through 48 hours...low...0 percent.
Formation chance through 5 days...medium...50 percent.

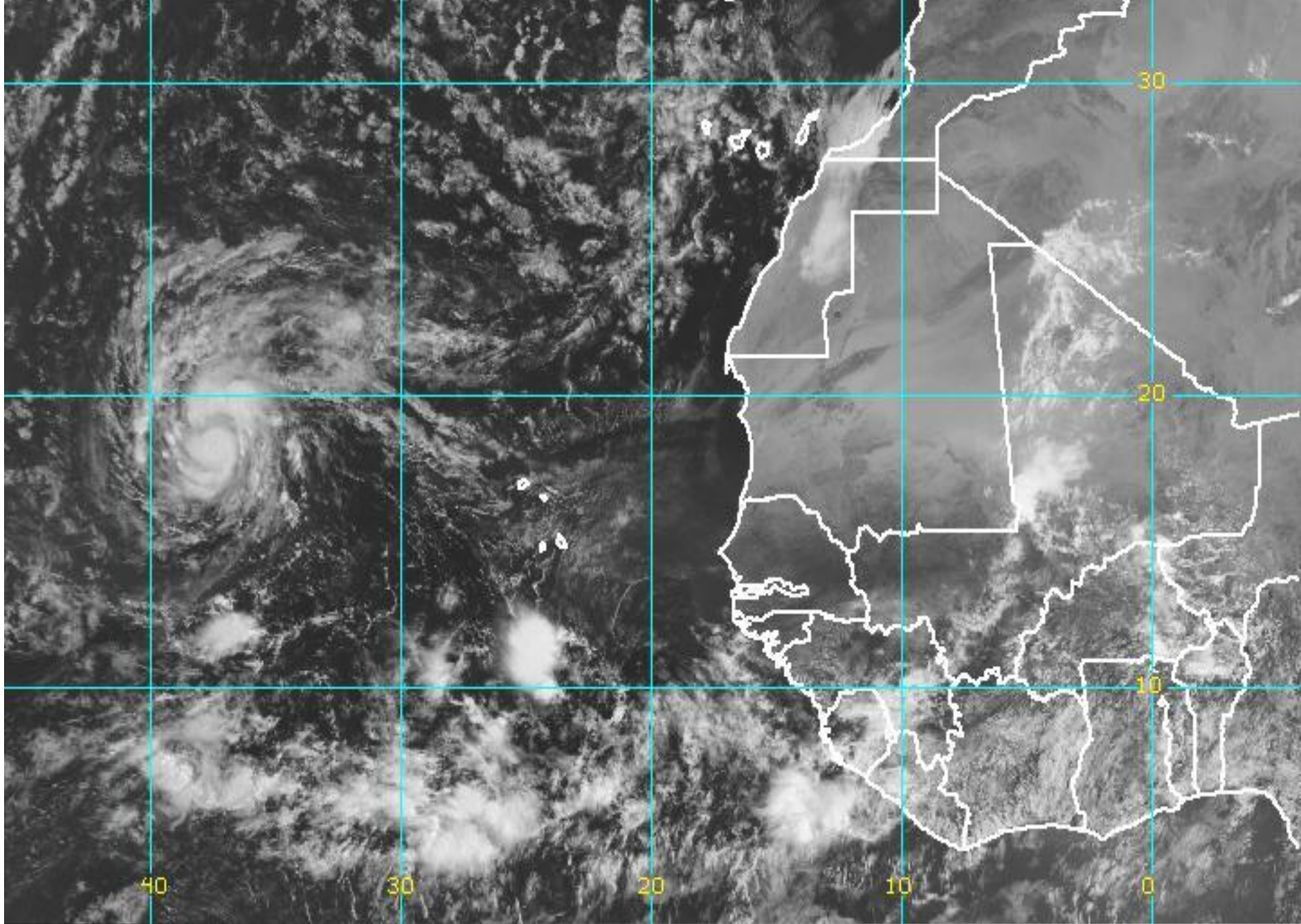
8:00 am EDT
Fri Sep 1 2017

100°W 90°W 80°W 70°W 60°W 50°W 40°W 30°W 20°W

Current Disturbances and Five-Day Cyclone Formation Chance: ✖ < 40% ✘ 40-60% ✖ > 60%

Tropical or Sub-Tropical Cyclone: ○ Depression 🌀 Storm 🌀 Hurricane

⊗ Post-Tropical Cyclone ✖ Remnants



Summary

- Tropical Depression Harvey is losing tropical characteristics over the Tennessee Valley but is still bringing heavy rains to the region. Harvey is expected to become extratropical as it continues to move northeast toward the Ohio Valley and New England over the weekend.
- At 5am EDT Friday, Hurricane Irma was located in the eastern Atlantic Ocean about 1,860 miles east of the northern Leeward Islands, which is also just over 3,000 miles east-southeast of Miami, FL.
- Irma became a major hurricane Thursday evening. Maximum sustained winds remain near 115 mph, making Irma a Category 3 hurricane on the Saffir-Simpson Hurricane Wind Scale and environmental conditions will continue to promote strengthening.
- Irma is currently moving west-northwest near 12mph. This motion is expected to continue today, followed by a westward turn on Saturday, and a west-southwestward motion by Sunday. A west-northwest movement is forecast to resume early next week as it approaches the northern Windward Islands
- Beyond this point, track uncertainty greatly increases and it is too early to tell if this system will eventually become a U.S. threat.
- Elsewhere, computer models are still predicting that an area of low pressure could form in the southwestern Gulf of Mexico week and move northeast, but tropical development is no longer expected.
- To the west of Hurricane Irma, a new tropical wave has emerged from the western coast of Africa.
- While there is currently a near 0% chance of tropical development within the next 48 hours, environmental conditions will be favorable for development by Sunday and there is a 50% chance of this wave becoming a tropical depression within the next 3-5 days as it moves westward around 15mph.

Florida Outlook:

- An increased risk for **rip currents** in the wake of Harvey is expected to continue along the Panhandle coast today.
- Hurricane Irma does not pose a threat to Florida within the next 5 days, but should be closely monitored.

Another briefing packet will be issued on Saturday. For the latest information on the tropics, please visit the National Hurricane Center website at www.hurricanes.gov



TROPICAL UPDATE

Created by:

Amy Godsey, Chief State Meteorologist
amy.godsey@em.myflorida.com

State Meteorological Support Unit
Florida Division of Emergency
Management

Users wishing to subscribe (approval pending) to this distribution list, register at https://public.govdelivery.com/accounts/FLDEM/subscriber/new?topic_id=SERT_Met_Tropics.

Other reports available for subscription are available at <https://public.govdelivery.com/accounts/FLDEM/subscriber/new?preferences=true>