



TROPICAL UPDATE

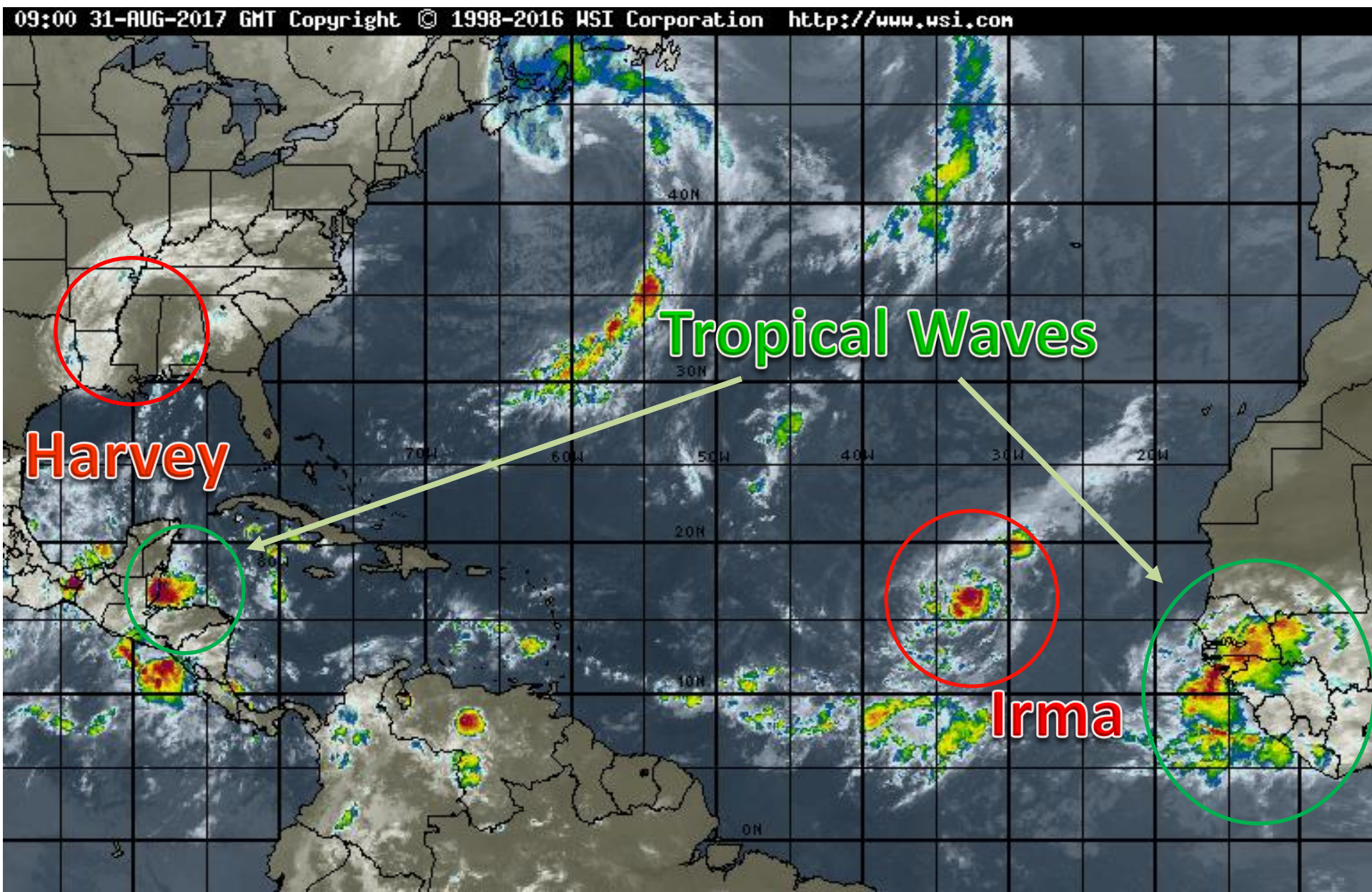
11 AM EDT

Thursday, August 31, 2017

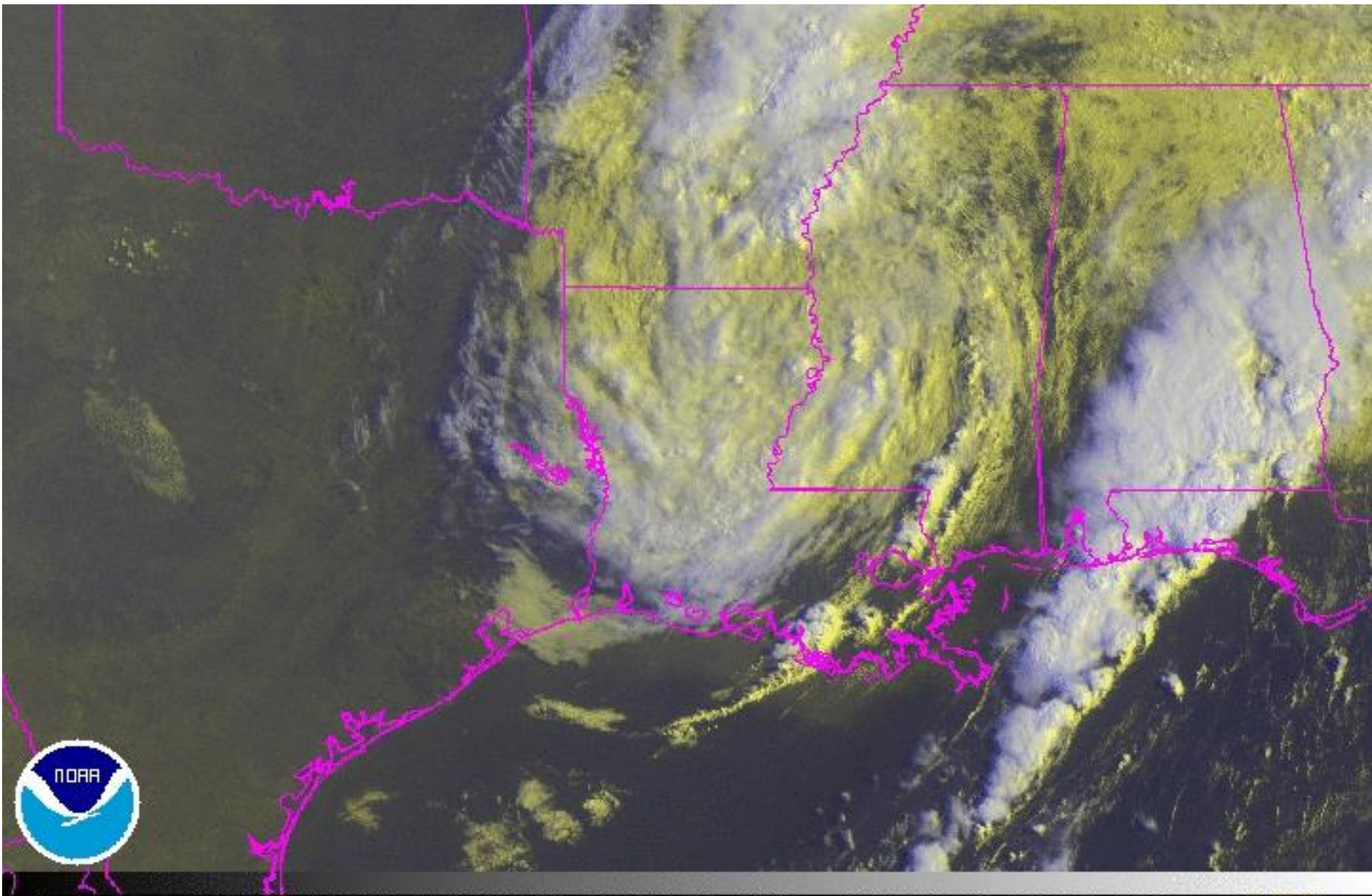
**Tropical Depression Harvey &
Hurricane Irma**

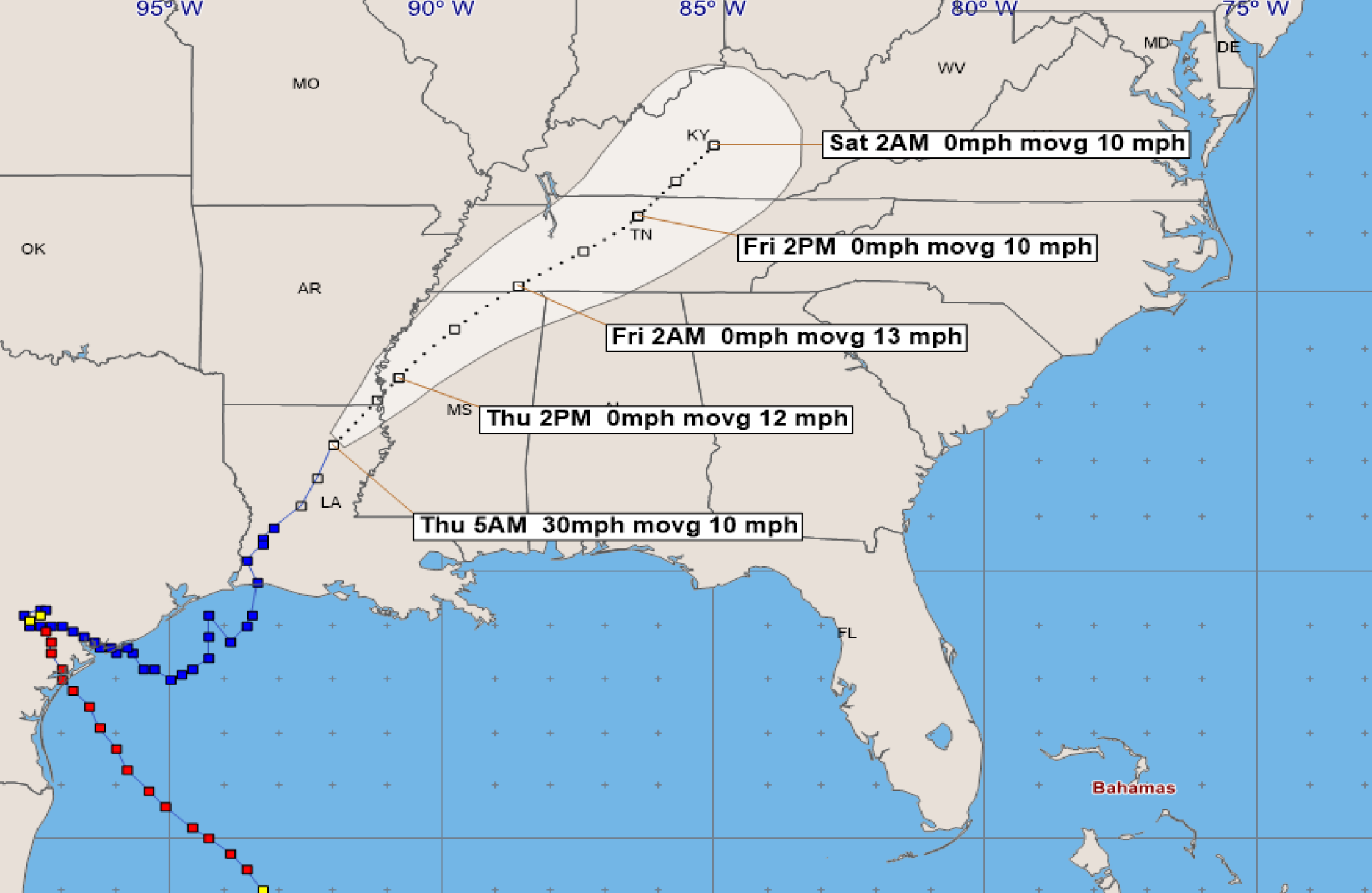
This update is intended for government and emergency response officials, and is provided for informational and situational awareness purposes only. Forecast conditions are subject to change based on a variety of environmental factors. For additional information, or for any life safety concerns with an active weather event please contact your County Emergency Management or Public Safety Office, local National Weather Service forecast office or visit the National Hurricane Center website at www.nhc.noaa.gov.

Atlantic Basin Satellite Image



T.D. Harvey Satellite





Tropical Depression Harvey - Thursday, August 31, 2017 5 AM EDT Advisory #44

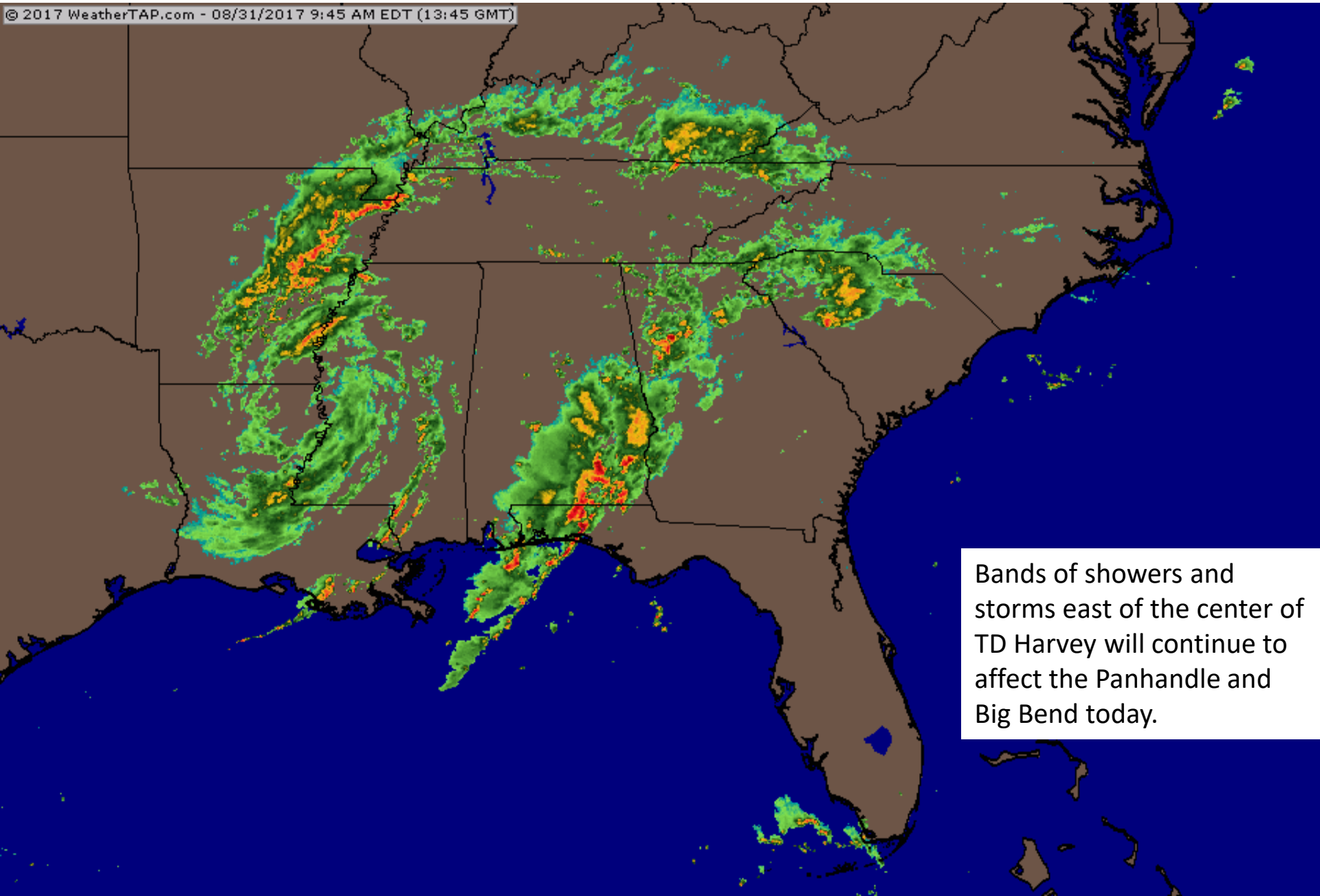
Center Location: 32.3 N 92 W Maximum Sustained Winds: 30 mph Movement: 10 mph NNE

☐ forecast positions
 Potential Track Area: day 1-3 day 4-5
 Surface Wind Field: at current location

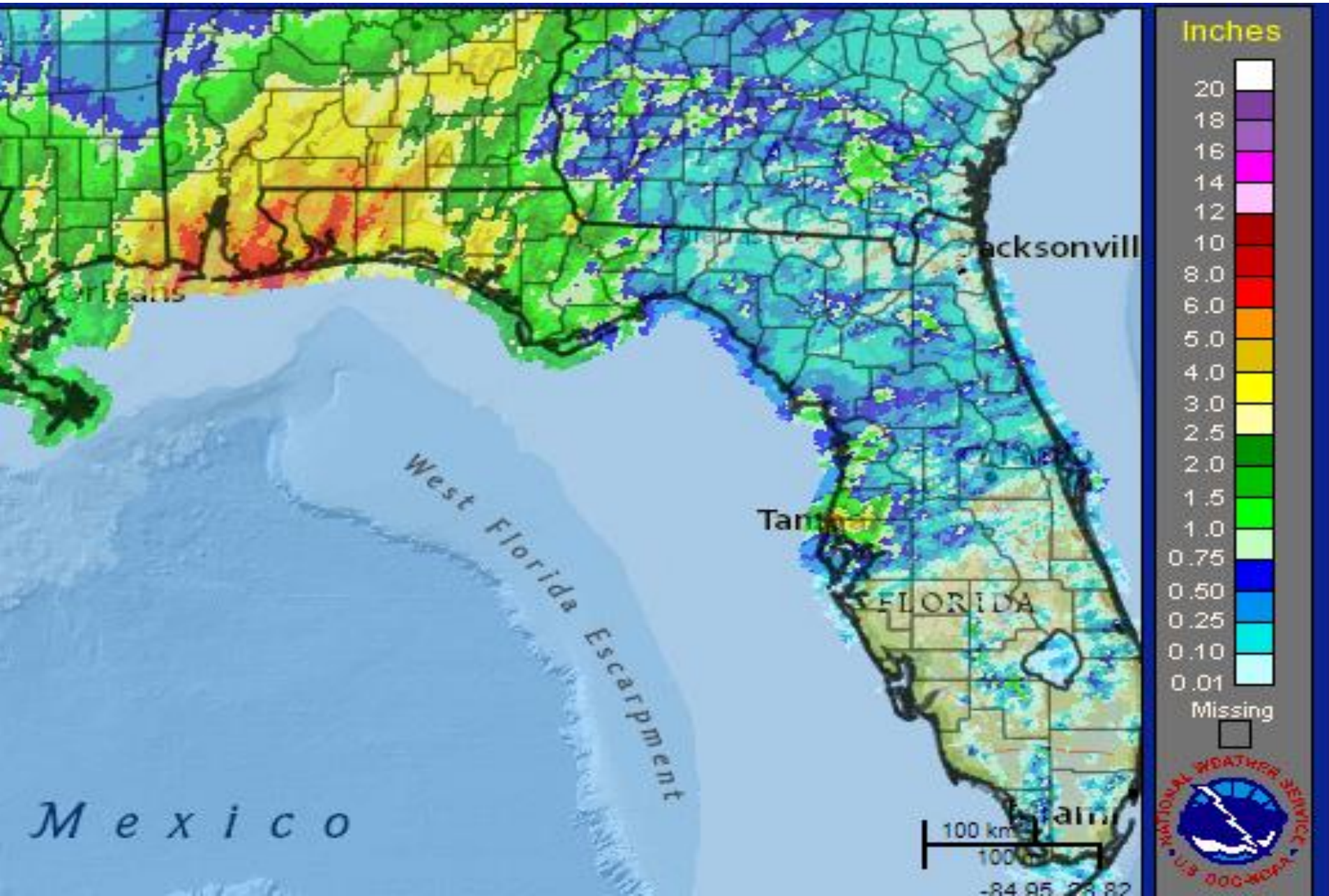
Sustained Wind Speeds: tropical storm ≥ 34 kt/39mph strong tropical storm ≥ 50 kt/58mph hurricane ≥ 64 kt/74mph

Regional Radar as of 9:45am EDT

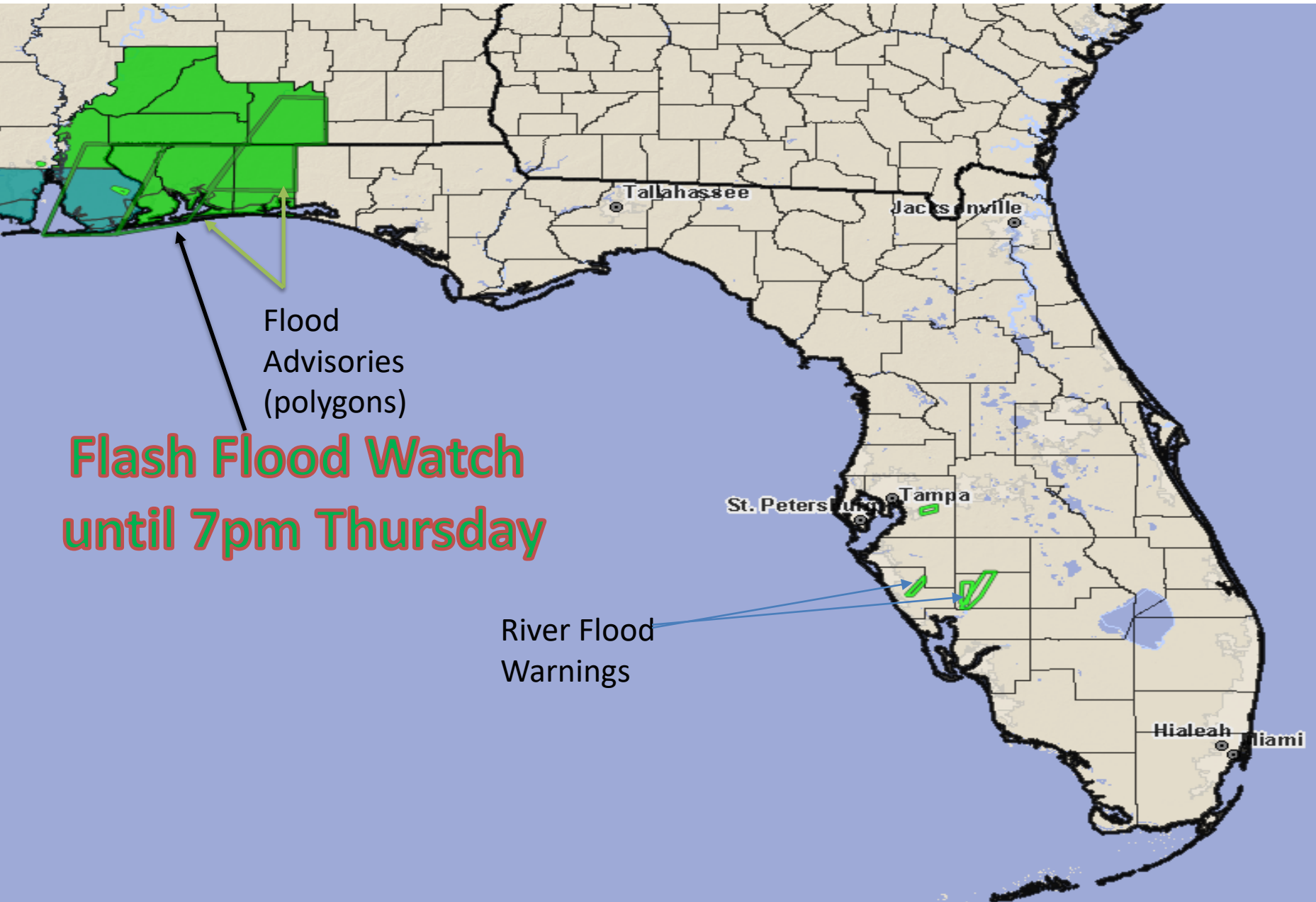
© 2017 WeatherTAP.com - 08/31/2017 9:45 AM EDT (13:45 GMT)



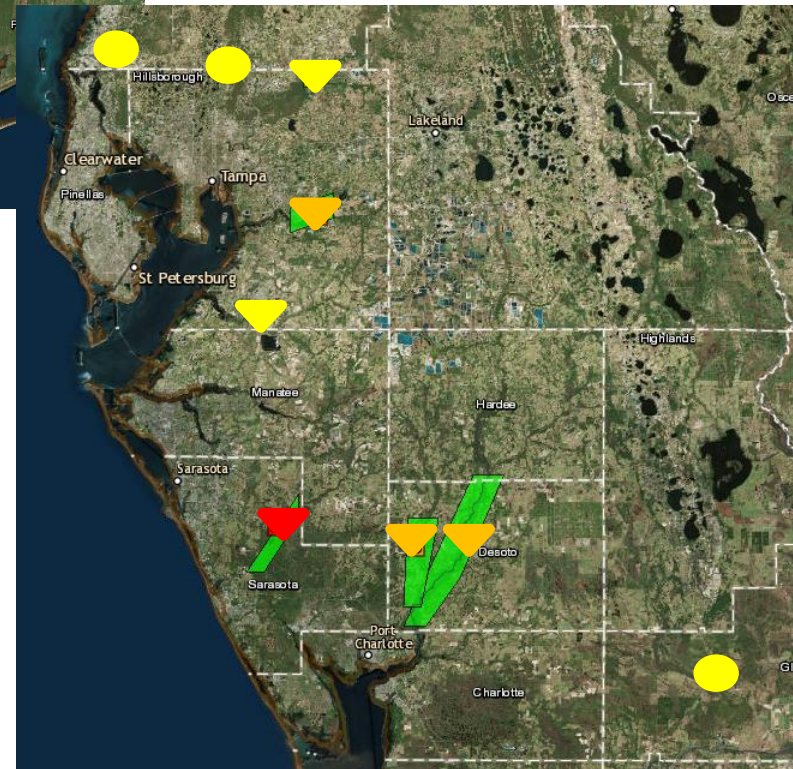
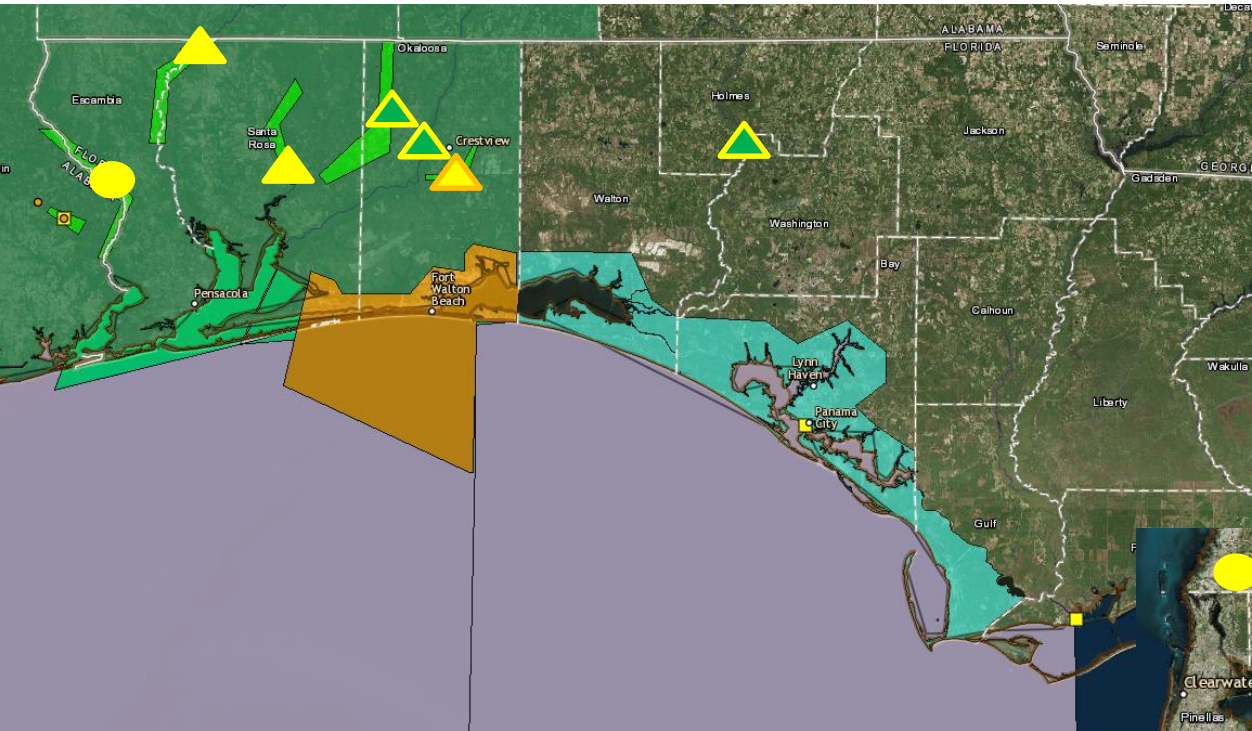
Observed Rainfall – Past 2 Days



Active Flood Advisories



River Flood Outlook

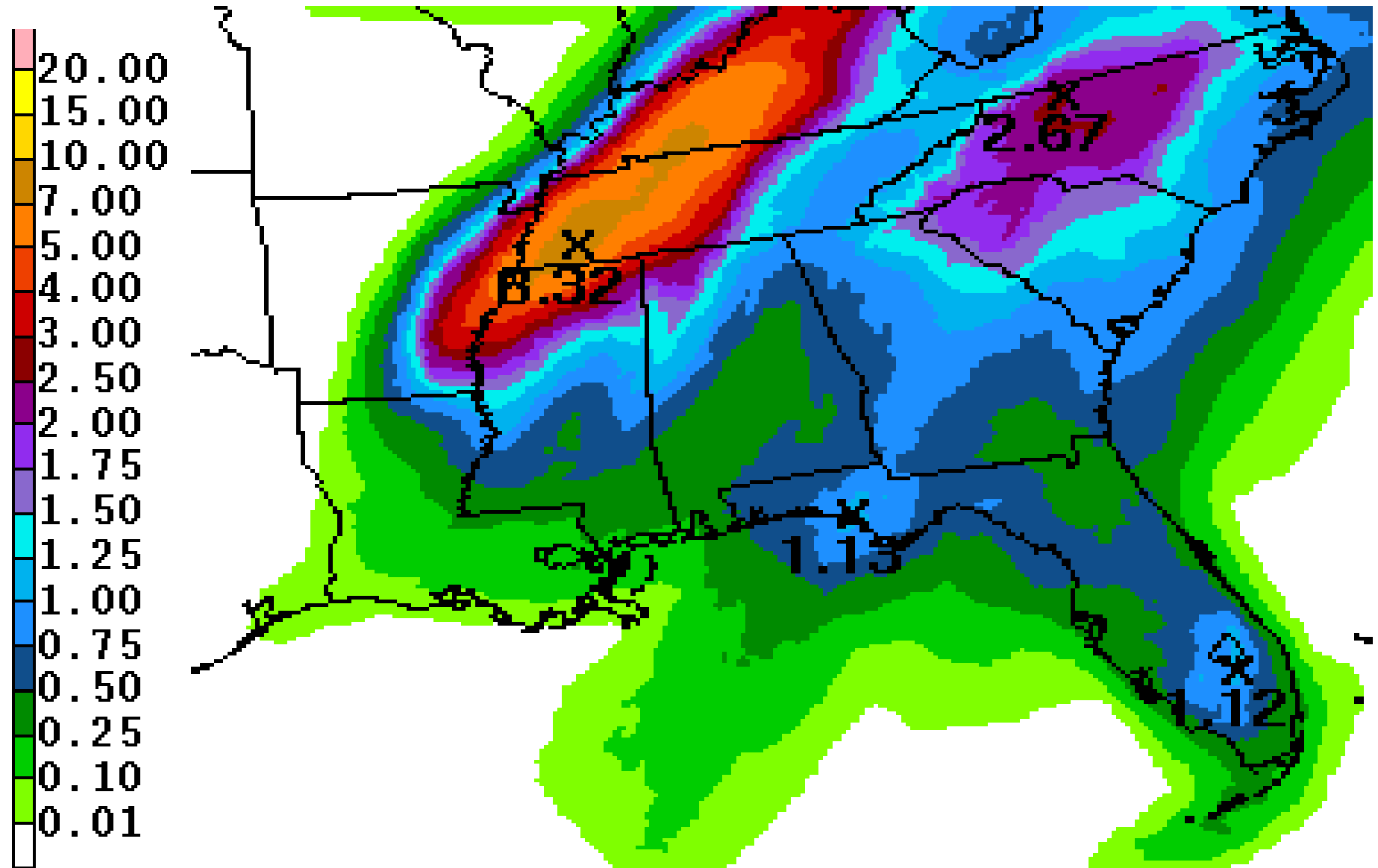


Current / Future Stage

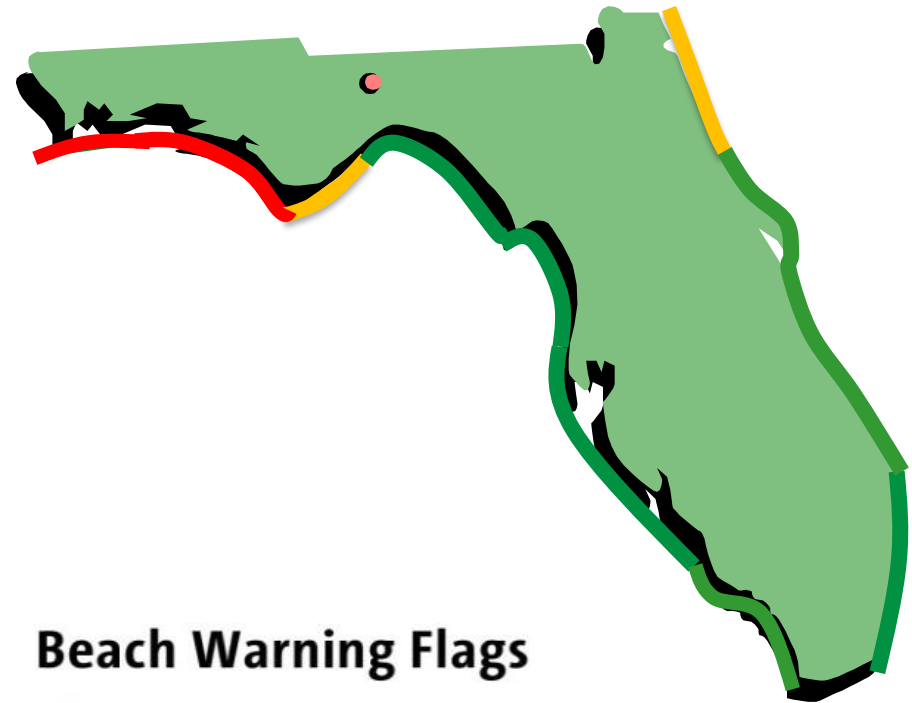
- No Flood
- Action Stage
- Minor Flood
- Moderate Flood
- Major Flood

- Cresting
- Rising
- Falling

2 Day Cumulative Forecast Rainfall (does not account for isolated higher totals)

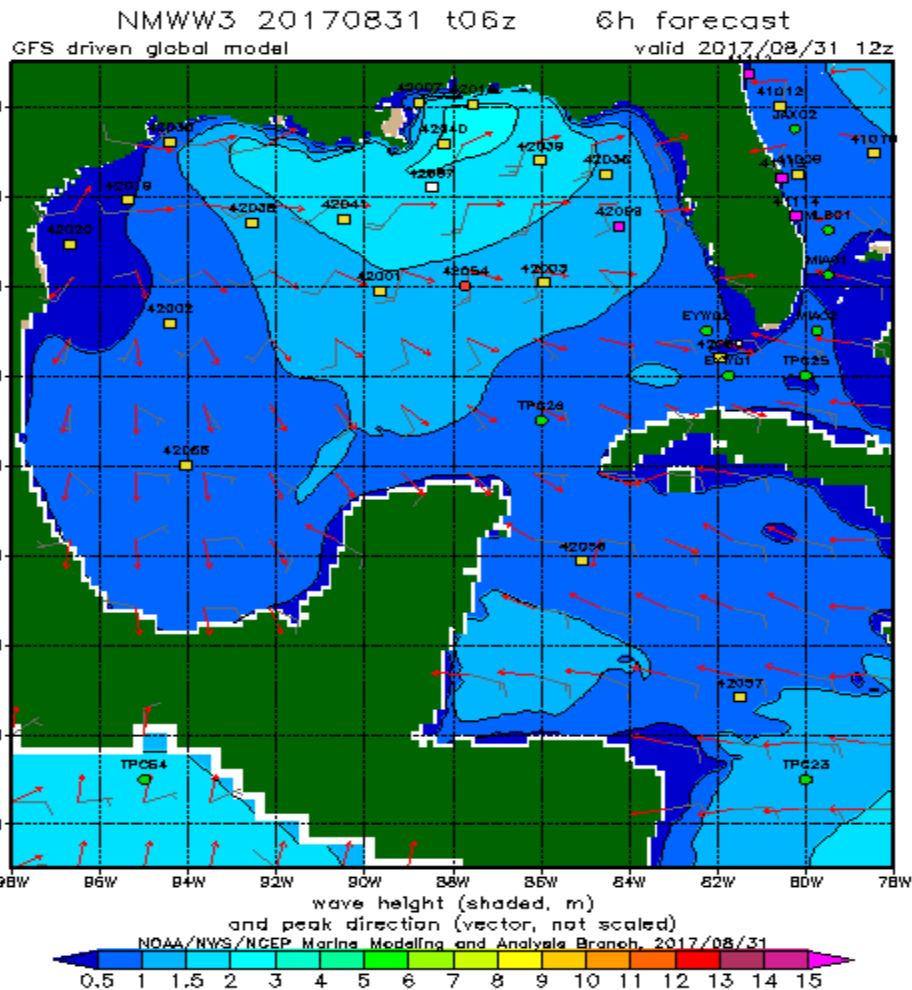


Rip Current Threat Through Friday

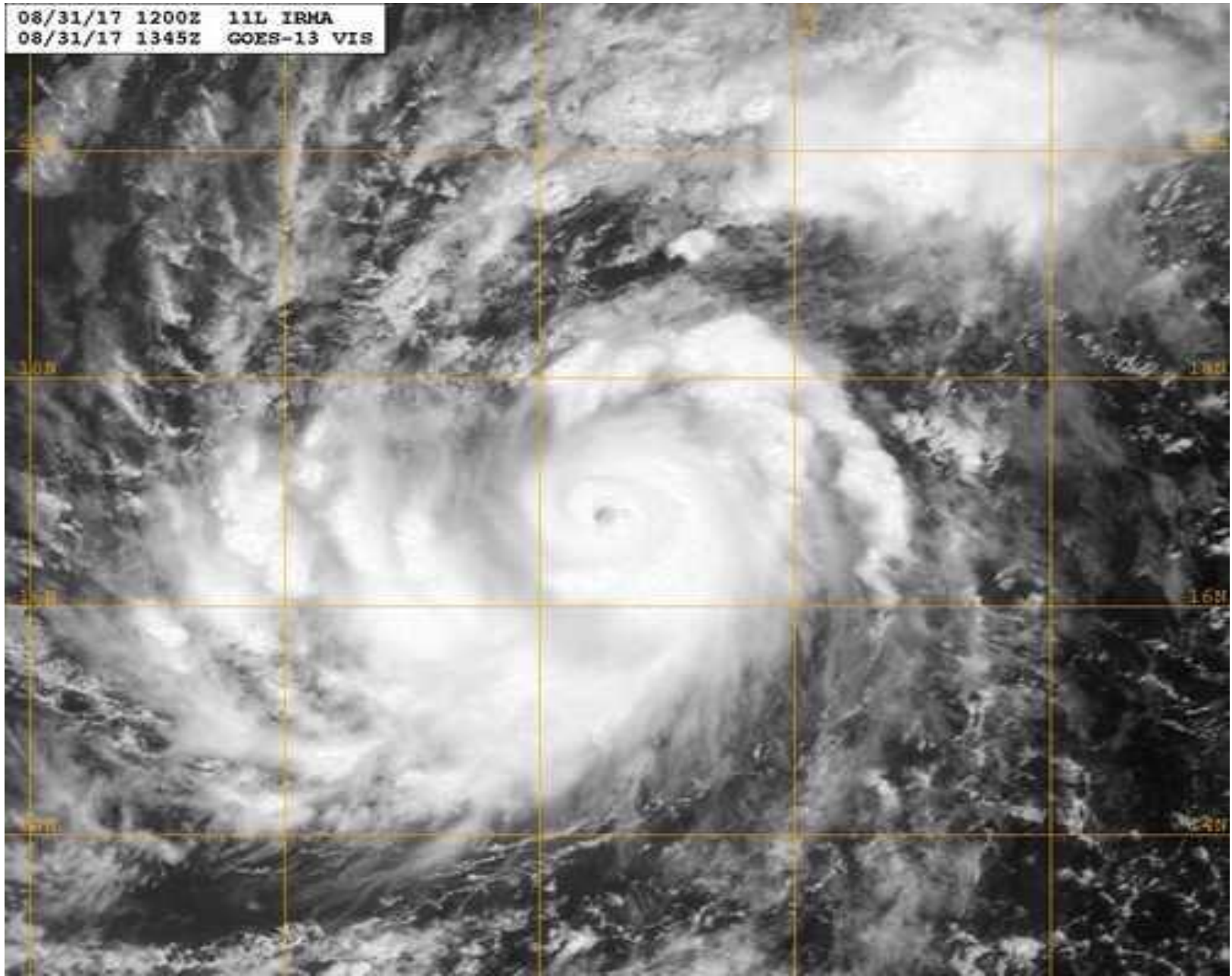


Beach Warning Flags

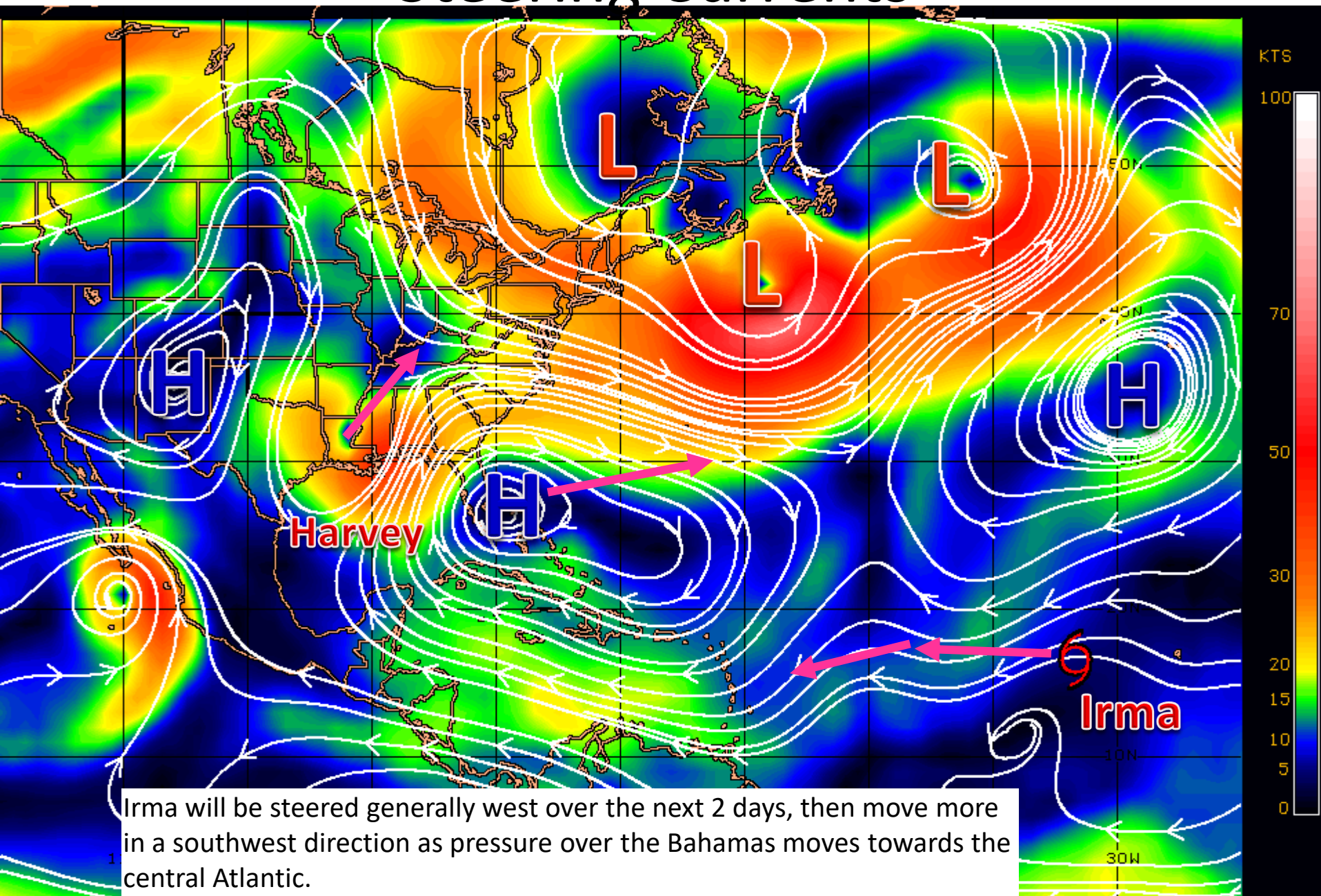
-  **Water closed to public**
-  **High Hazard**
High surf and/or strong currents
-  **Medium Hazard**
Moderate surf and/or currents
-  **Low Hazard**
Calm conditions, exercise caution
-  **Dangerous marine life**



Hurricane Irma Satellite Image

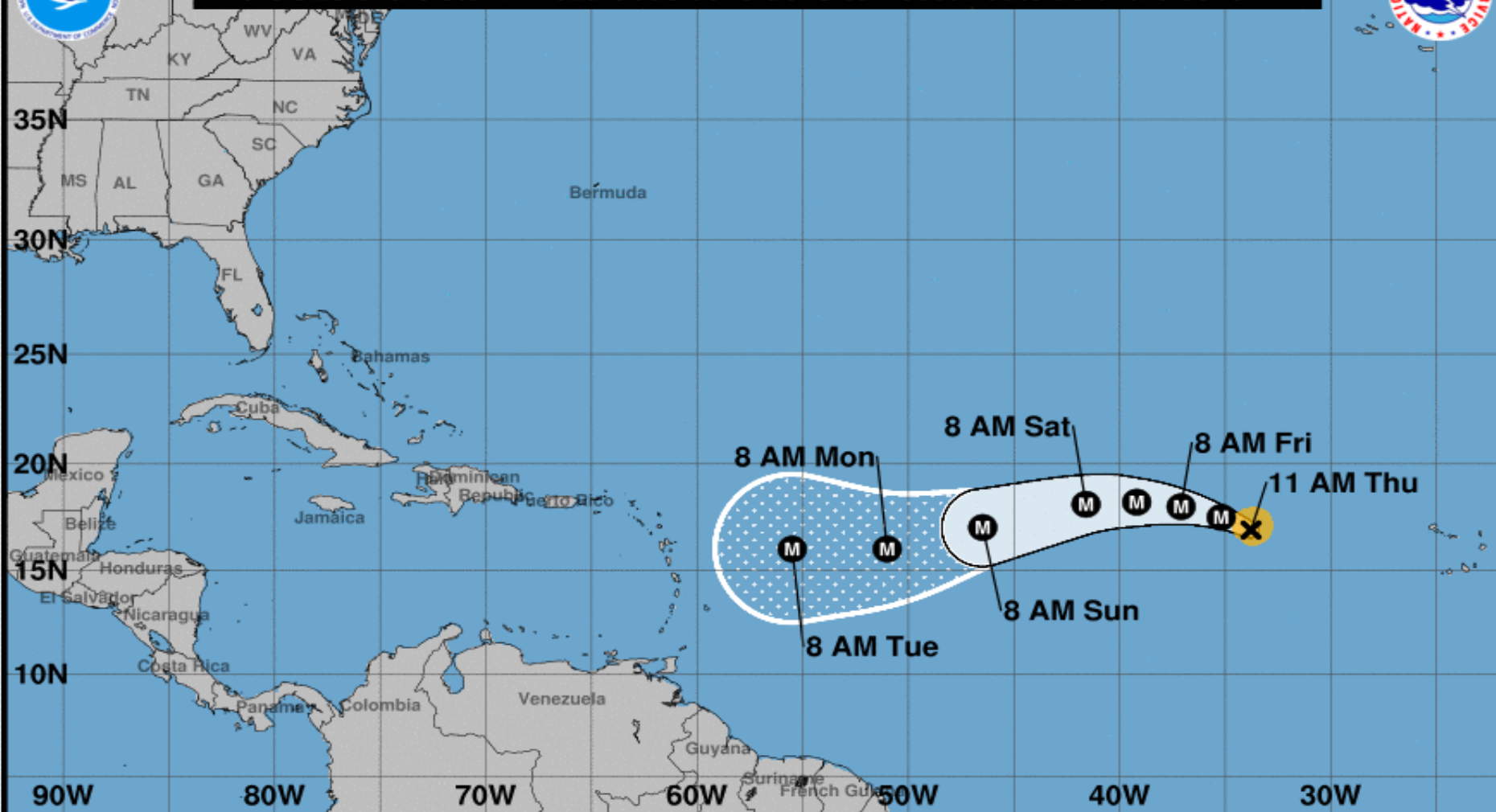


Steering Currents





Note: The cone contains the probable path of the storm center but does not show the size of the storm. Hazardous conditions can occur outside of the cone.



Hurricane Irma

Thursday August 31, 2017

11 AM AST Advisory 5

NWS National Hurricane Center

Current information: x

Center location 16.9 N 33.8 W

Maximum sustained wind 100 mph

Movement WNW at 10 mph

Forecast positions:

● Tropical Cyclone ○ Post/Potential TC

Sustained winds: D < 39 mph

S 39-73 mph H 74-110 mph M > 110 mph

Potential track area:

Day 1-3 Day 4-5

Watches:

Hurricane Trop Stm

Warnings:

Hurricane Trop Stm

Current wind extent:

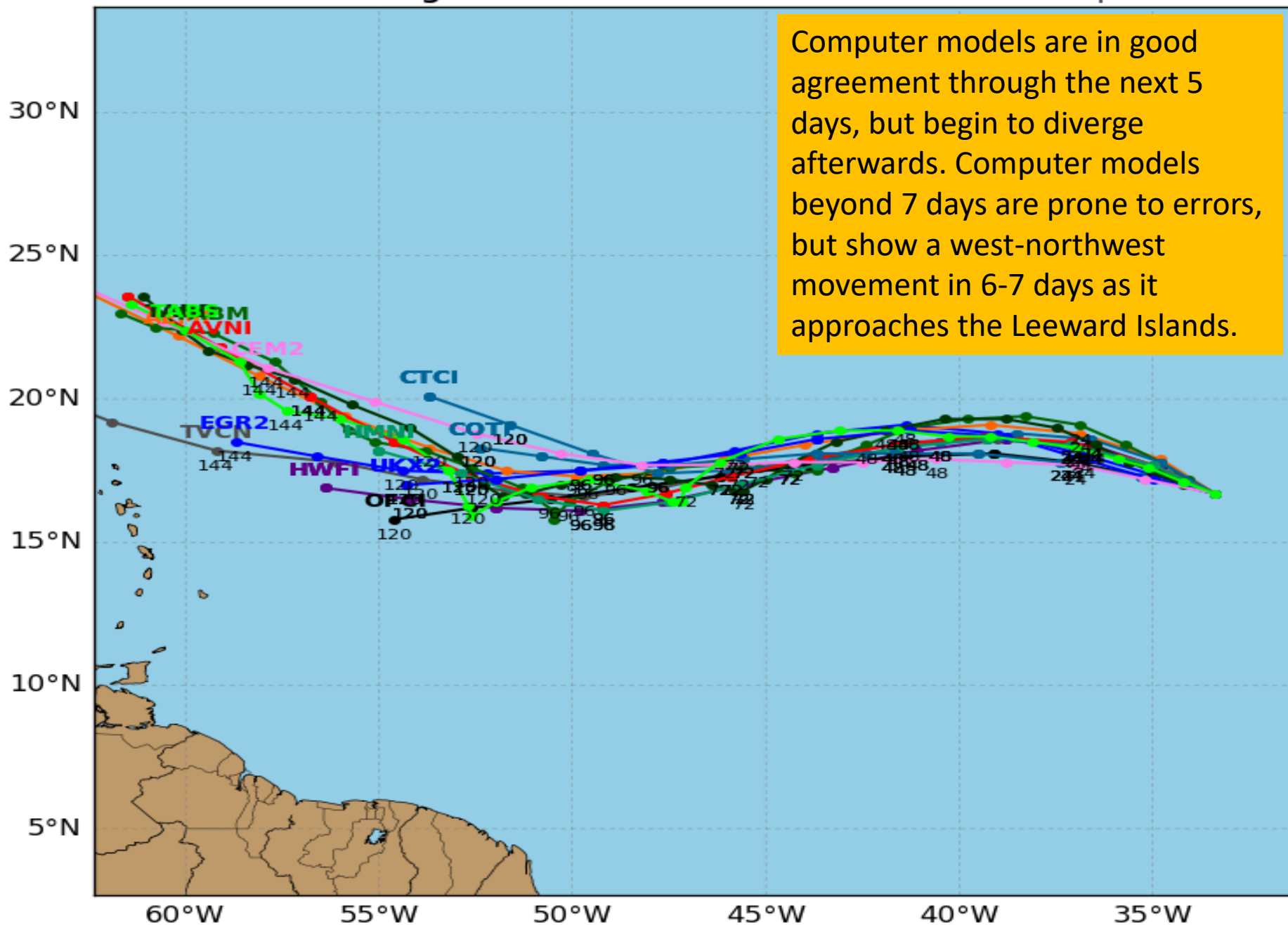
Hurricane Trop Stm

Hurricane IRMA Model Track Guidance

Initialized at 12z Aug 31 2017

Levi Cowan - tropicaltidbits.com

Computer models are in good agreement through the next 5 days, but begin to diverge afterwards. Computer models beyond 7 days are prone to errors, but show a west-northwest movement in 6-7 days as it approaches the Leeward Islands.



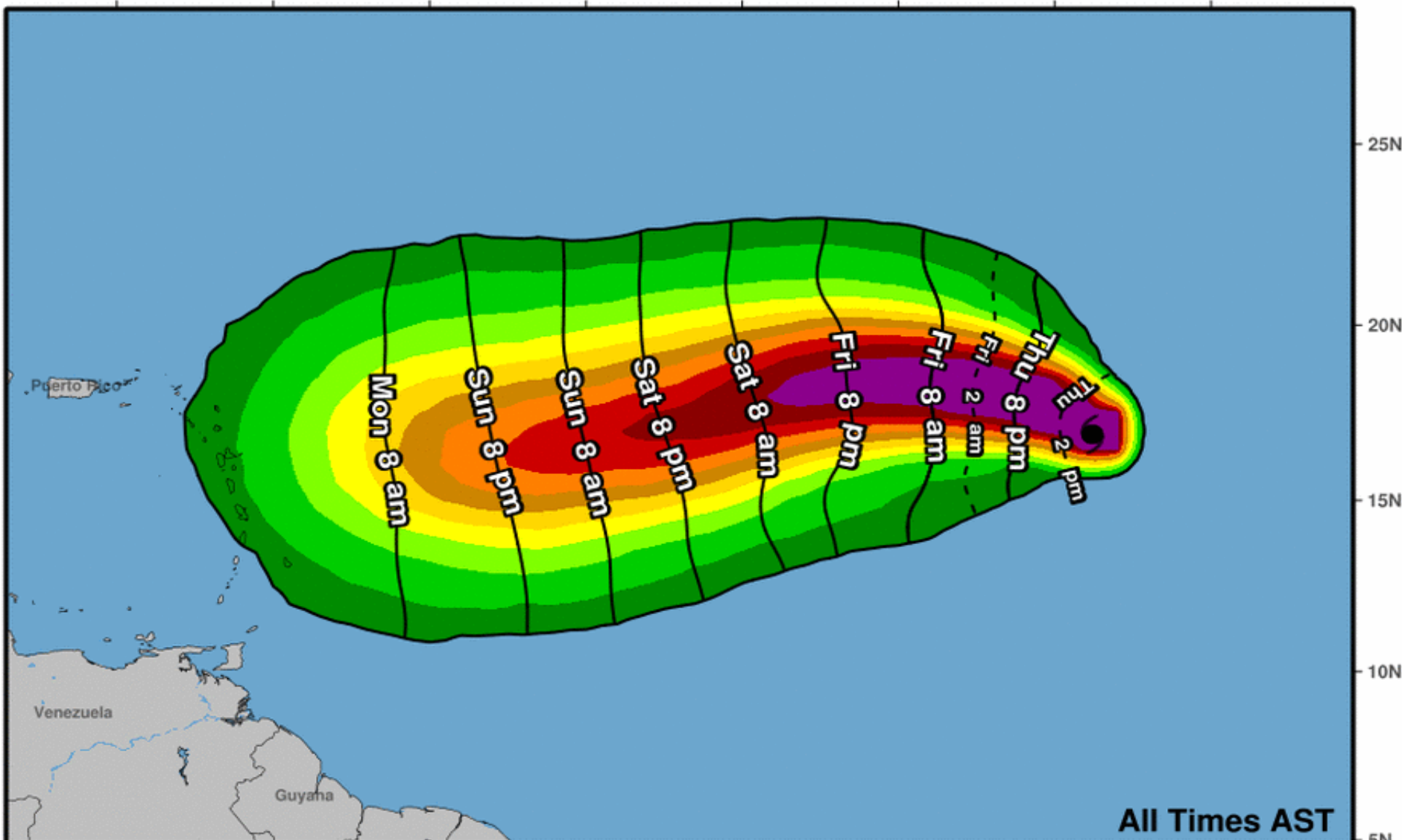


Earliest Reasonable Arrival Time of Tropical-Storm-Force Winds



65W 60W 55W 50W 45W 40W 35W 30W

25N
20N
15N
10N
5N



Hurricane Irma
Thu. Aug. 31, 2017 11 am AST
Advisory 5

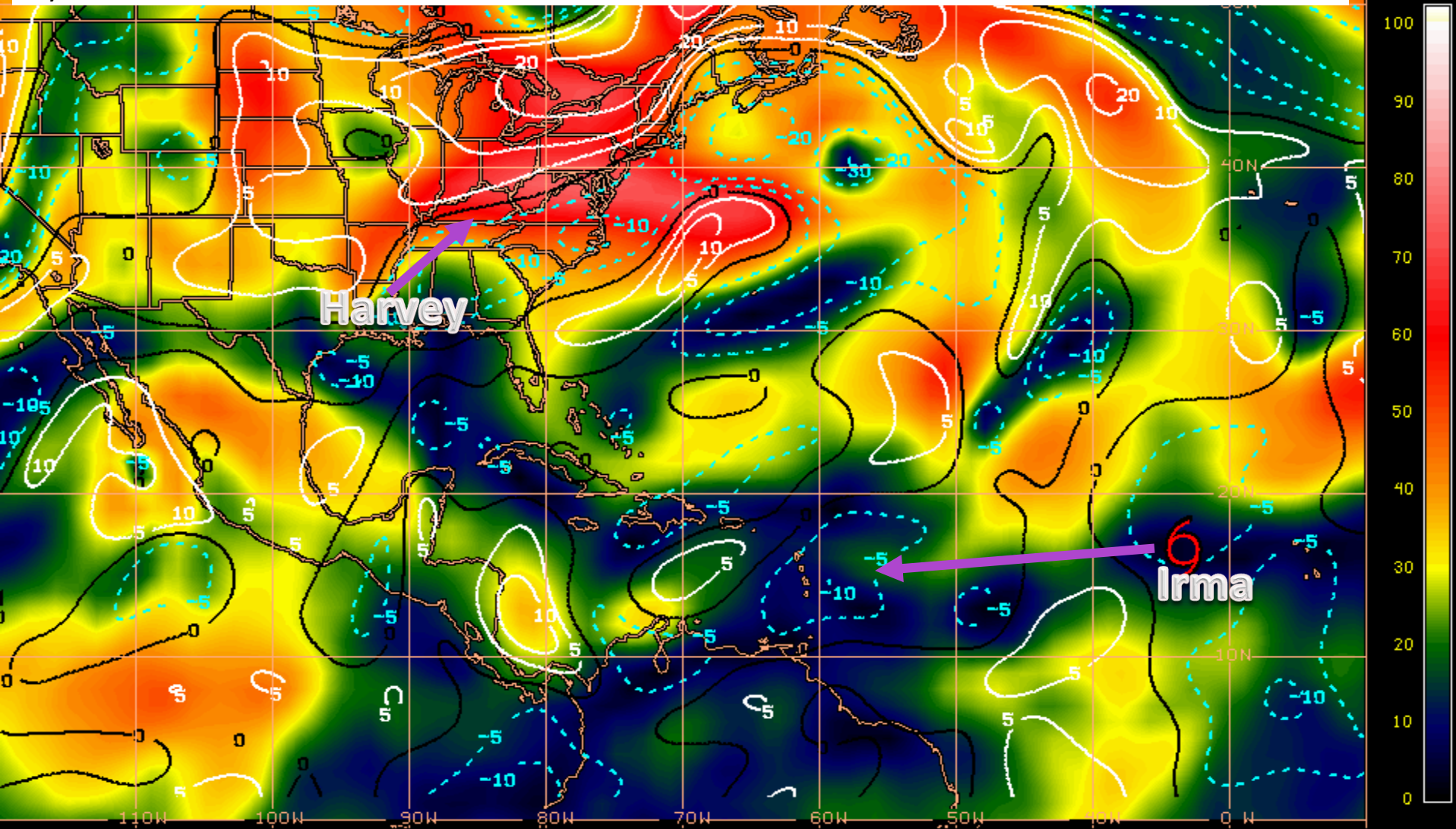
Storm Location &
Wind Speed (knots)
○ <34 ◐ 34-63 ● ≥64

Five-day chance of receiving sustained 34+ knot (39+ mph) winds

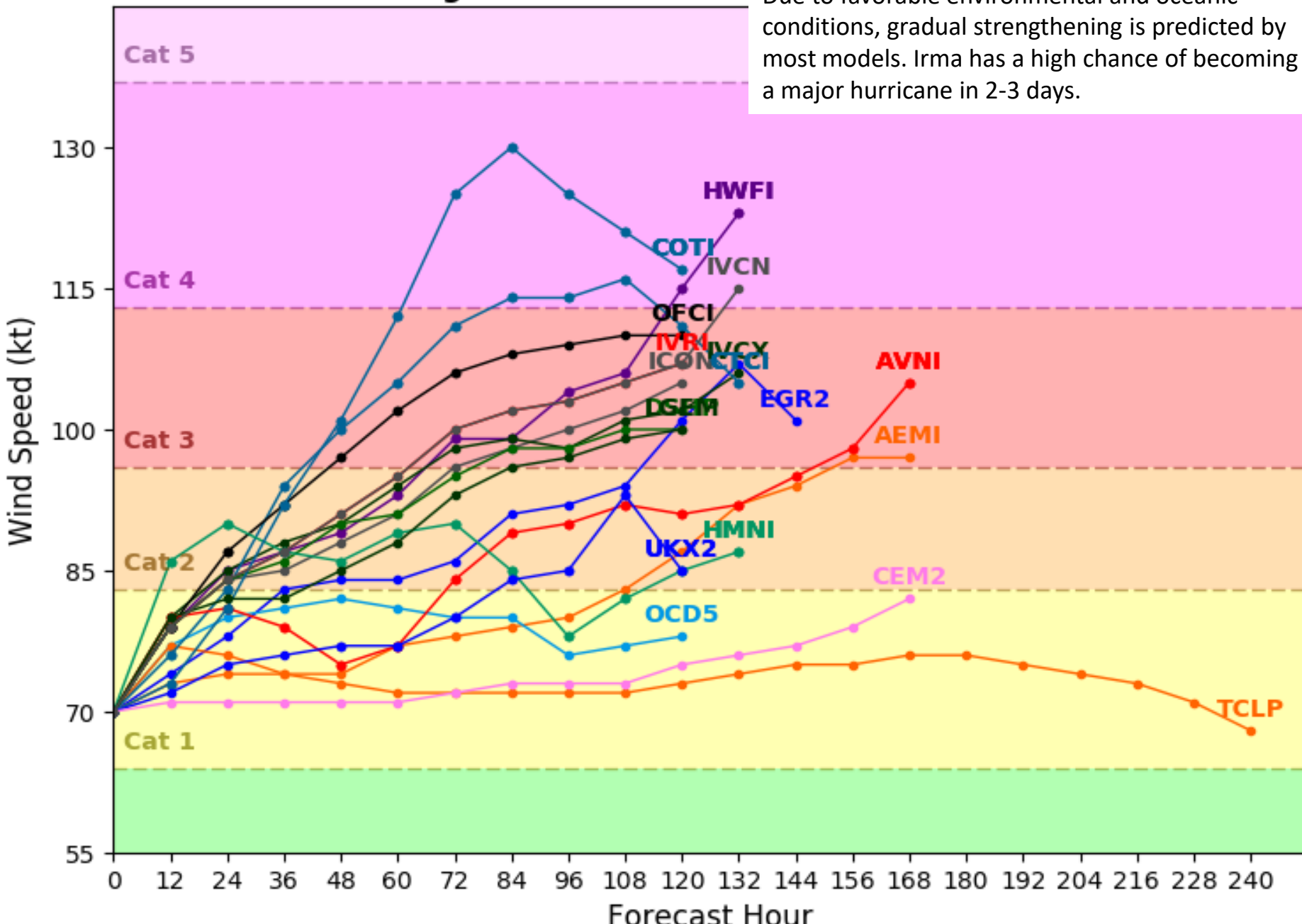


Current Wind Shear (shaded) and Shear Tendency (lines)

A relatively low shear environment in the path of Irma will promote intensification through the next 5 days.



Due to favorable environmental and oceanic conditions, gradual strengthening is predicted by most models. Irma has a high chance of becoming a major hurricane in 2-3 days.





Five-Day Graphical Tropical Weather Outlook

National Hurricane Center Miami, Florida



www.hurricanes.gov

All Disturbances

HARVEY

Formation chance through 48 hours...low...0 percent.
Formation chance through 5 days...low...20 percent.

IRMA

8:00 am EDT
Thu Aug 31 2017

100°W 90°W 80°W 70°W 60°W 50°W 40°W 30°W 20°W

Current Disturbances and Five-Day Cyclone Formation Chance: ✕ < 40% ✕ 40-60% ✕ > 60%
Tropical or Sub-Tropical Cyclone: ○ Depression 🌀 Storm 🌀 Hurricane
⊗ Post-Tropical Cyclone ✕ Remnants

Summary

- Harvey was downgraded to a tropical depression Wednesday evening.
- At 5am EDT Thursday, the center of Tropical Depression Harvey was located in northern Louisiana, about 315 miles northwest of Pensacola, FL.
- Harvey will continue to move north-northeast at 10-15 mph before dissipating over middle Tennessee or central Kentucky tomorrow night, but will continue to produce the threat for heavy rain and tornadoes over portions of Mississippi, Alabama, Tennessee and Kentucky.
- Irma rapidly intensified this morning and at 11am EDT Thursday, Irma became the 4th hurricane of the 2017 season.
- Maximum sustained winds jumped from 70mph at 5am to now near 100 mph, making Irma a Category 2 hurricane on the Saffir-Simpson Hurricane Wind Scale.
- Hurricane Irma is located in the eastern Atlantic about 650 miles west of the Cabo Verde Islands, which is about 3,035 miles east-southeast of Miami, FL.
- Environmental conditions will continue to promote strengthening, and Irma could become a major hurricane by tonight.
- Computer models are in good agreement on the forecast track through the next 5 days, sending Irma on a west-northwest to west track through Friday, and then on a more southwestern track over the weekend.
- After this point, computer models begin to diverge. Computer models beyond 7 days are prone to errors, but show a west and west--northwest movement resuming in 6-7 days as it approaches the northern Windward Islands.
- Elsewhere, computer models are predicting that an area of low pressure could form in the southwestern Gulf of Mexico over the weekend and move slowly north or northeast early next week.
- There is currently a 0% chance of tropical development within the next 48 hours, but a 20% chance of tropical development by Tuesday.
- If a low pressure system were to develop, these chances may increase. Additionally, it may bring additional rainfall to the US Gulf Coast next week.

Florida Outlook:

- Rain bands displaced from the center of Tropical Depression Harvey will continue to affect the Florida Panhandle and western Big Bend today and tonight.
- An additional 1-3" of rain is forecast for the area over next 24 hours, with isolated higher amounts of 5-8" possible primarily over the western Panhandle.
- Storm cells repeatedly moving over the same area for several hours could cause flooding of low lying and poor drainage areas as well as the ponding of water on roadways.
- A **Flash Flood Watch** remains in effect for Escambia, Santa Rosa and Okaloosa Counties through this evening.
- Local rivers and streams are also rising but should crest near **minor flood** stage within the next 2 days.
- Additionally, an increased risk for **rip currents** is expected along the Panhandle coast through at least Friday.
- Hurricane Irma does not pose a threat to Florida within the next 5 days, but should be closely monitored.
- The west Gulf possible low should also be monitored for development and potential impacts to the Panhandle coast.

Another briefing packet will be issued on Friday. For the latest information on the tropics, please visit the National Hurricane Center website at www.hurricanes.gov



TROPICAL UPDATE

Created by:

Amy Godsey, Chief State Meteorologist
amy.godsey@em.myflorida.com

State Meteorological Support Unit
Florida Division of Emergency
Management

Users wishing to subscribe (approval pending) to this distribution list, register at https://public.govdelivery.com/accounts/FLDEM/subscriber/new?topic_id=SERT_Met_Tropics.

Other reports available for subscription are available at <https://public.govdelivery.com/accounts/FLDEM/subscriber/new?preferences=true>