



TROPICAL UPDATE

9 AM EDT

Friday, August 25, 2017

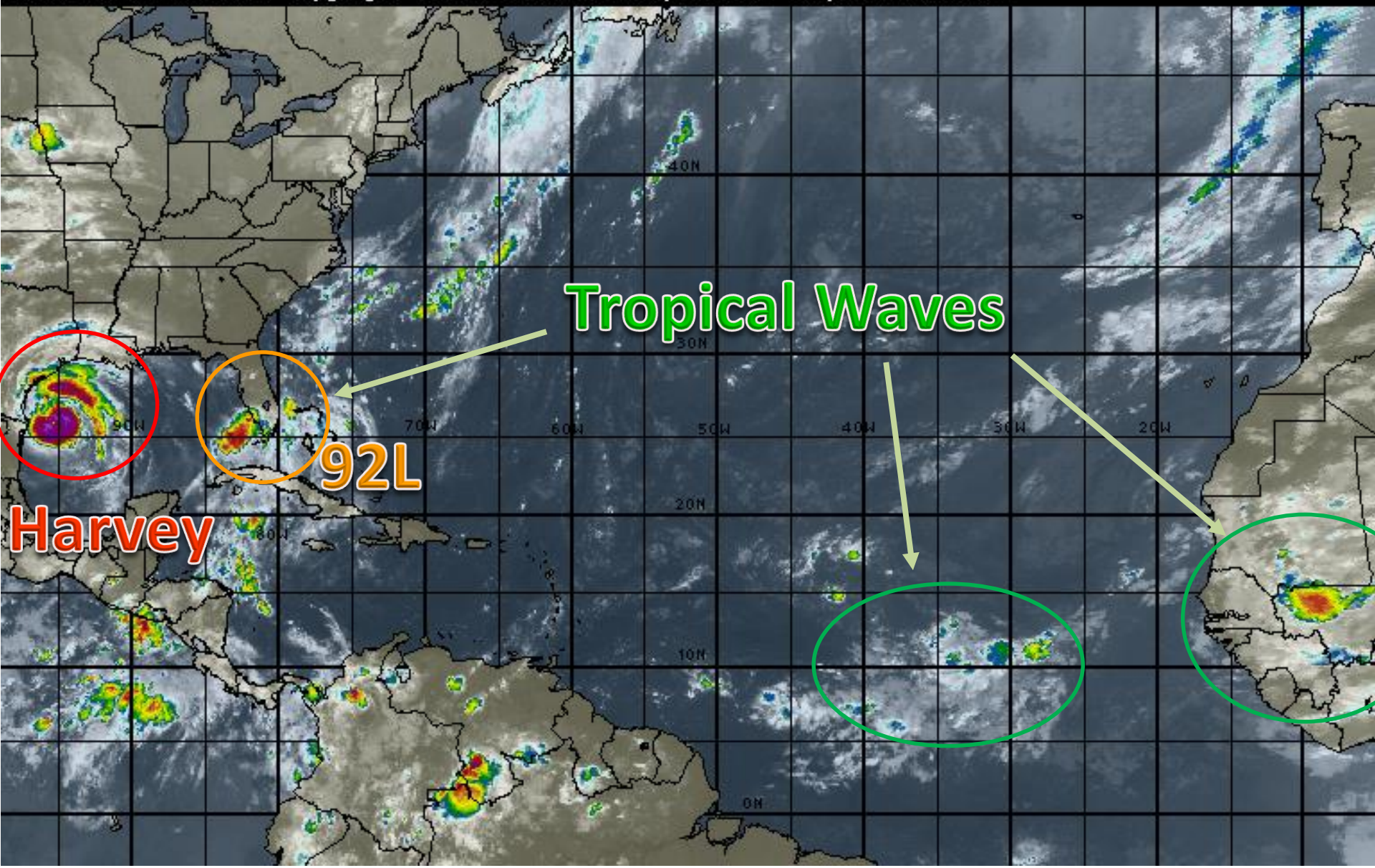
Hurricane Harvey &

Invest 92L (40%)

This update is intended for government and emergency response officials, and is provided for informational and situational awareness purposes only. Forecast conditions are subject to change based on a variety of environmental factors. For additional information, or for any life safety concerns with an active weather event please contact your County Emergency Management or Public Safety Office, local National Weather Service forecast office or visit the National Hurricane Center website at www.nhc.noaa.gov.

Atlantic Basin Satellite Image

09:00 25-AUG-2017 GMT Copyright © 1998-2016 WSI Corporation <http://www.wsi.com>





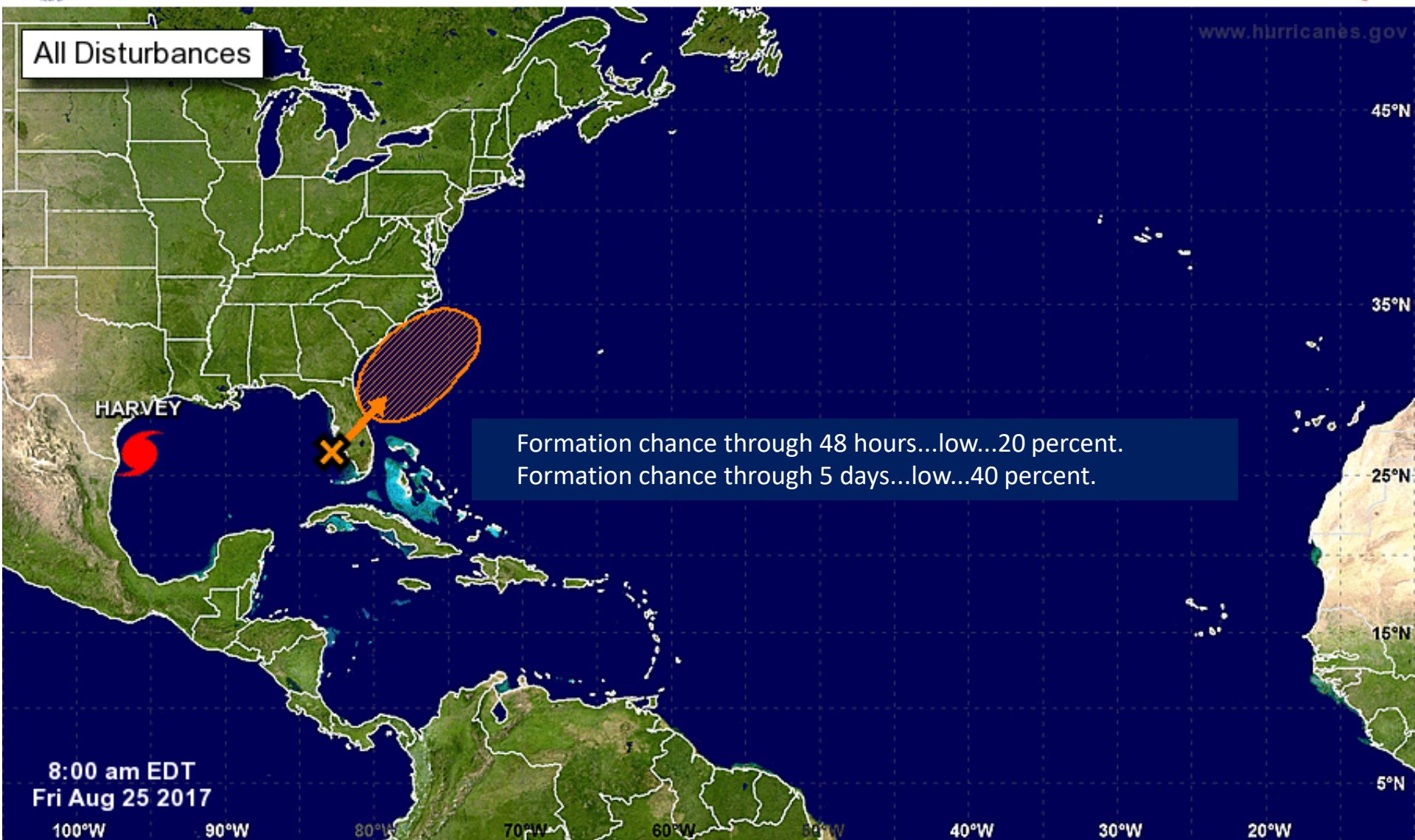
Five-Day Graphical Tropical Weather Outlook

National Hurricane Center Miami, Florida



www.hurricanes.gov

All Disturbances

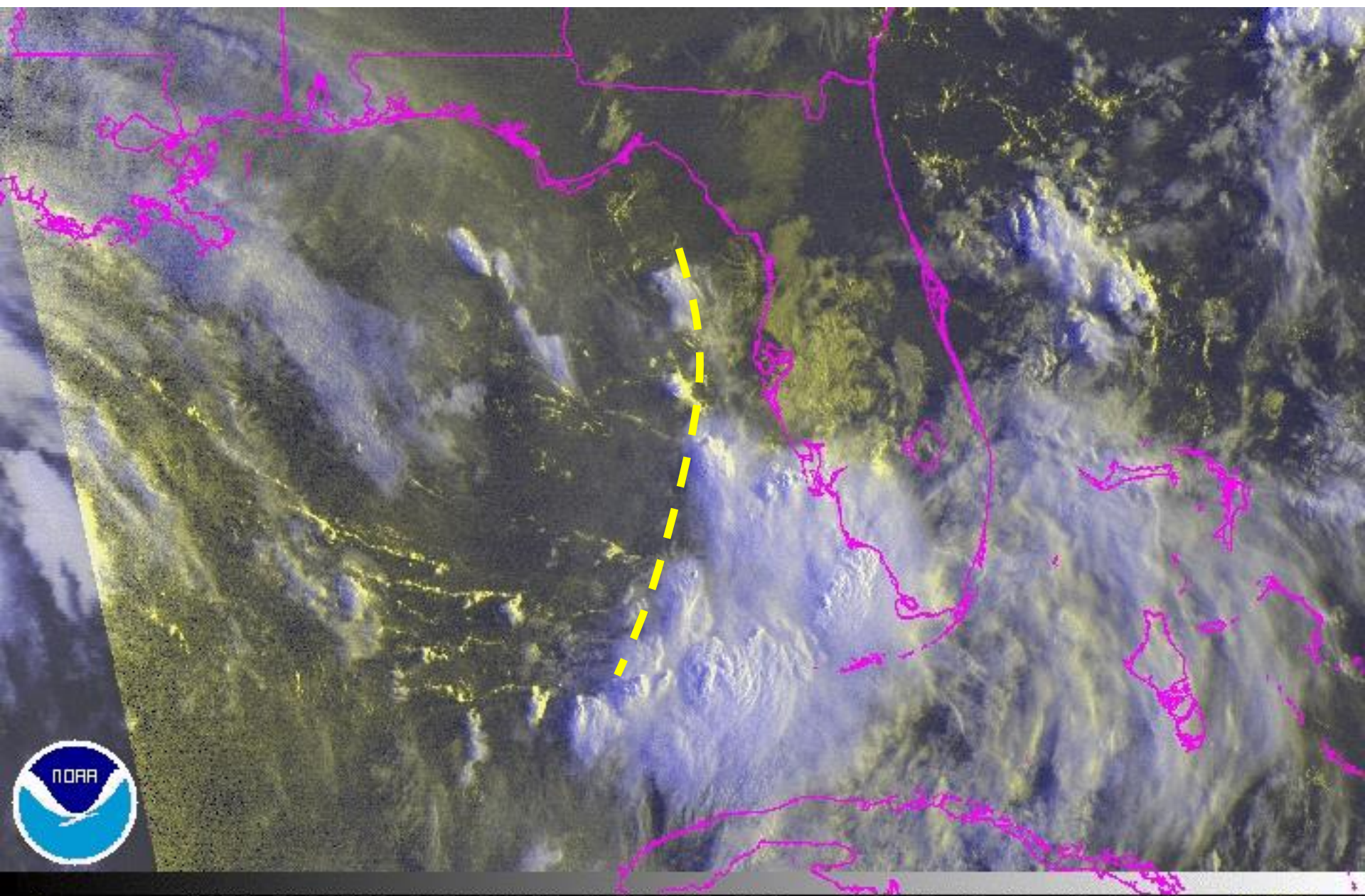


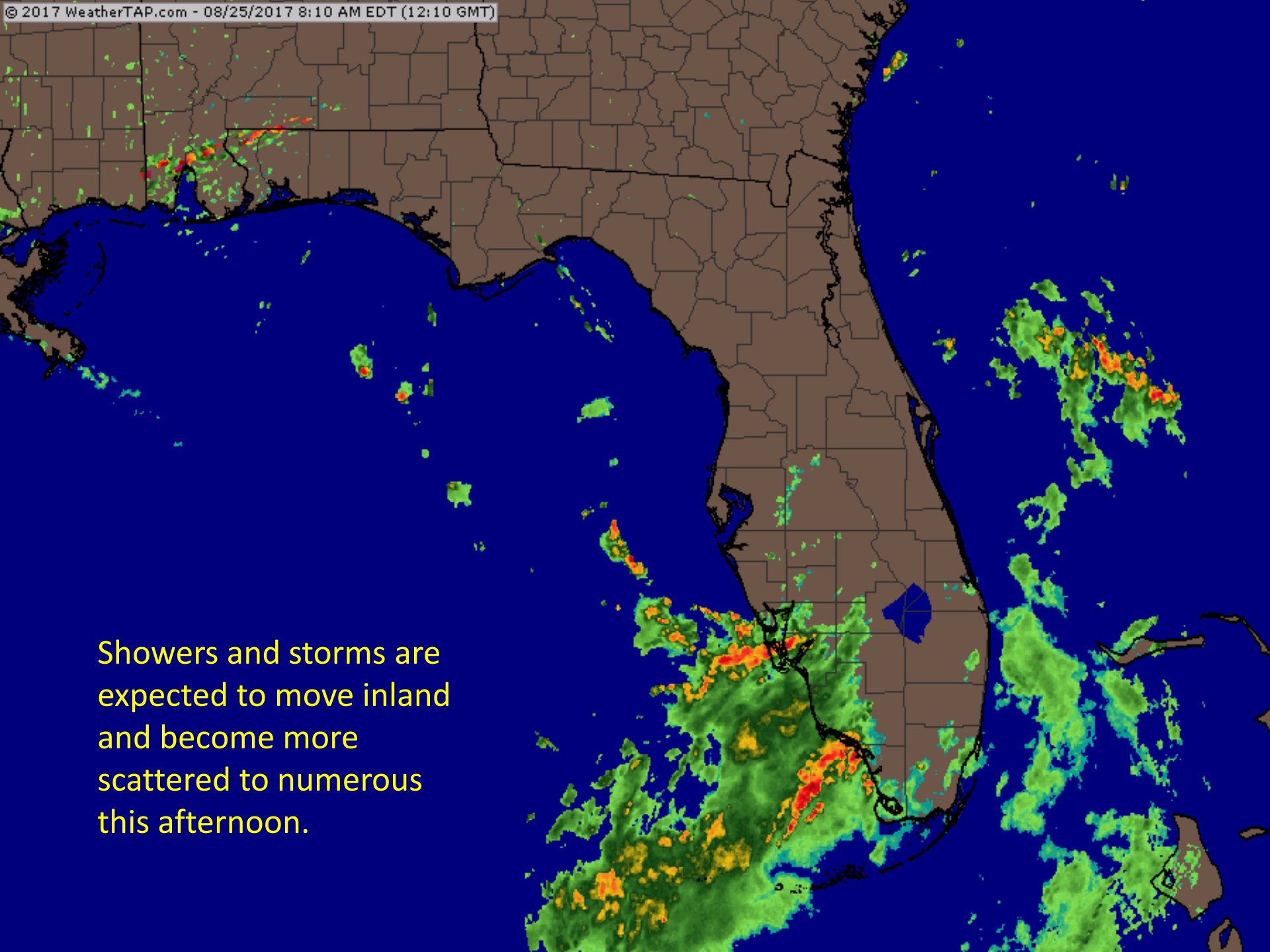
Current Disturbances and Five-Day Cyclone Formation Chance: < 40% 40-60% > 60%

Tropical or Sub-Tropical Cyclone: Depression Storm Hurricane

Post-Tropical Cyclone Remnants

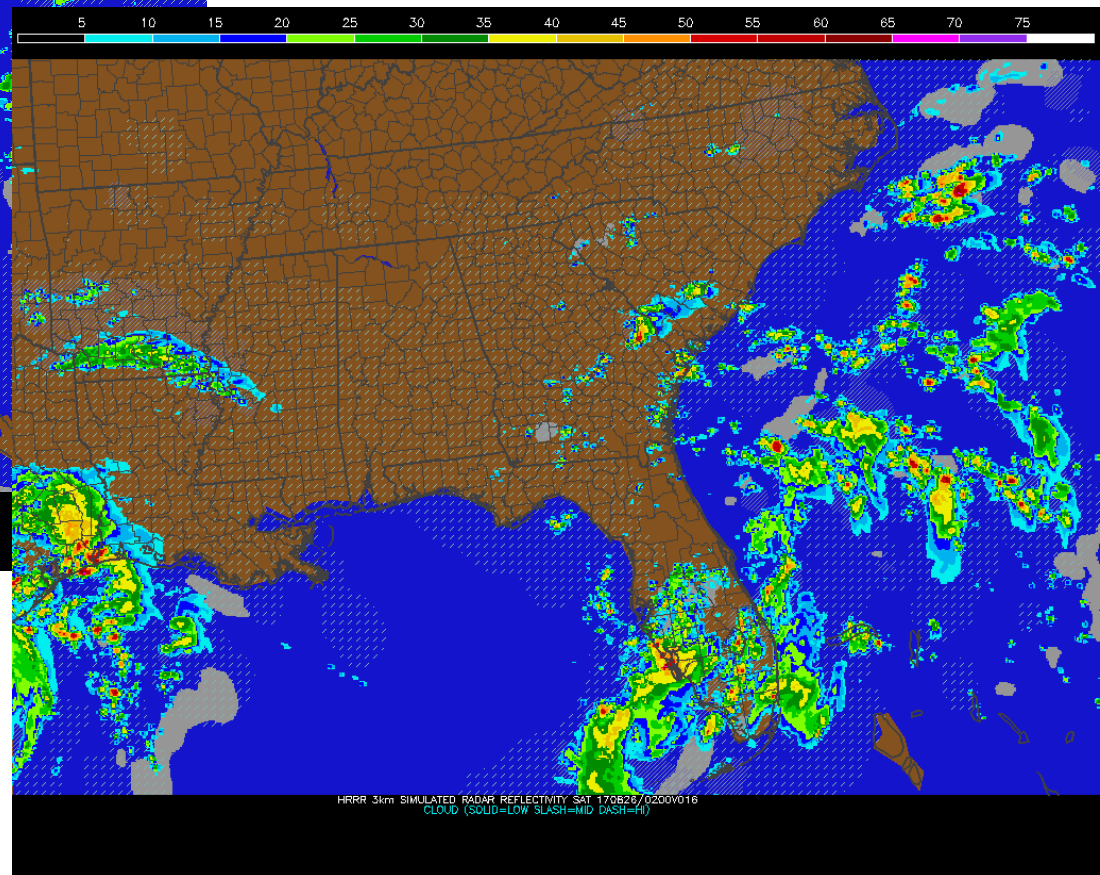
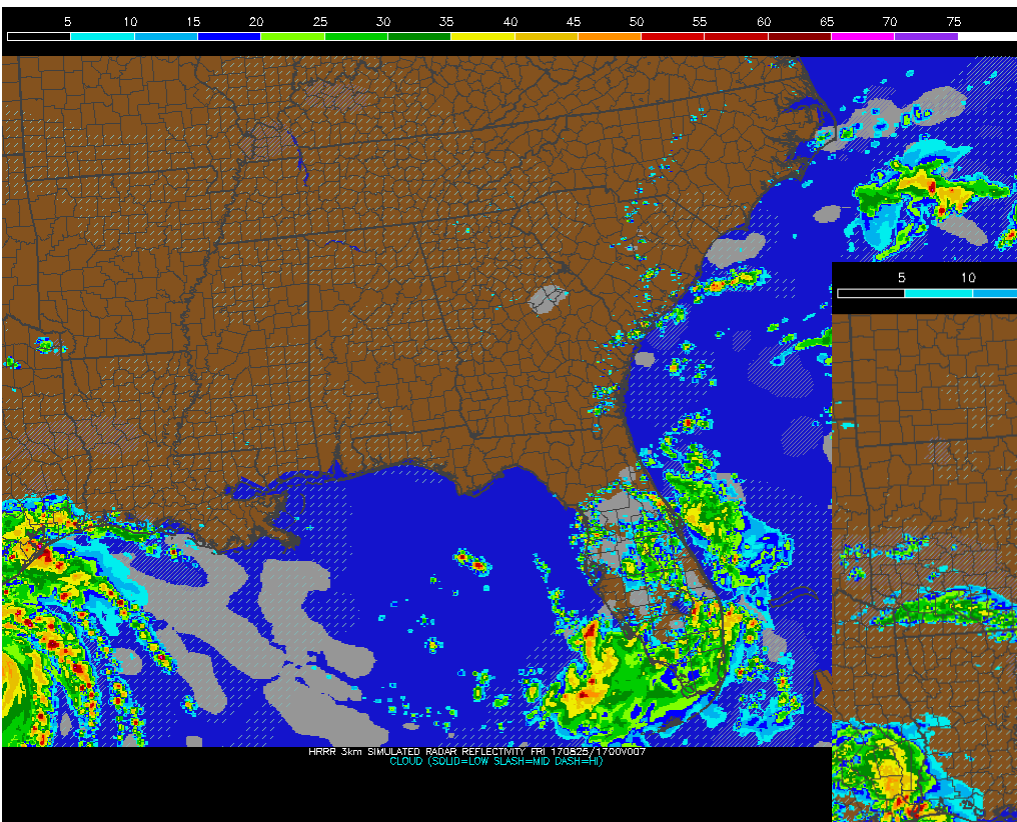
92L Satellite





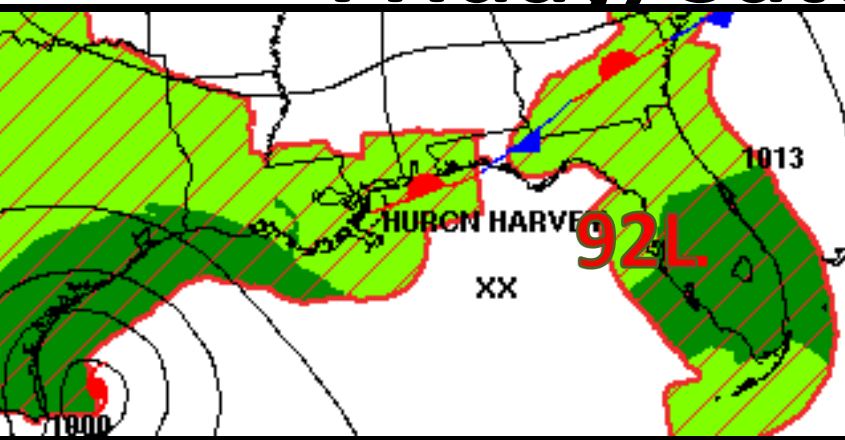
Showers and storms are expected to move inland and become more scattered to numerous this afternoon.

Forecast Future Radar – 1pm and 10pm EDT Friday



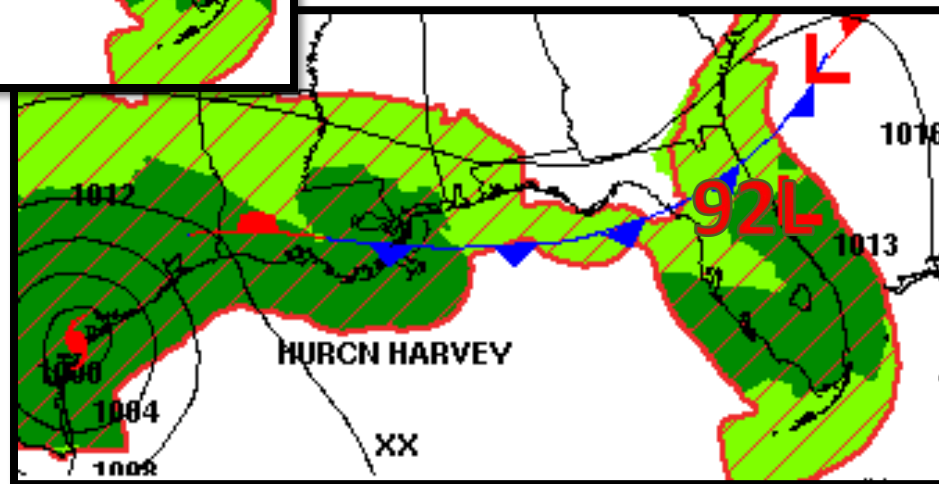
Forecast Weather Maps

Friday, Saturday & Sunday

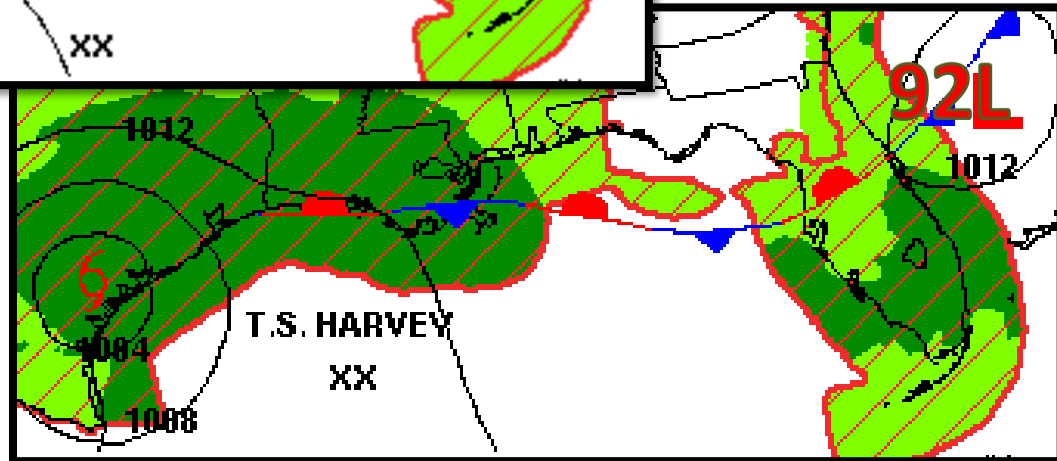


■ Rain (Chance)

■ Rain (Likely)



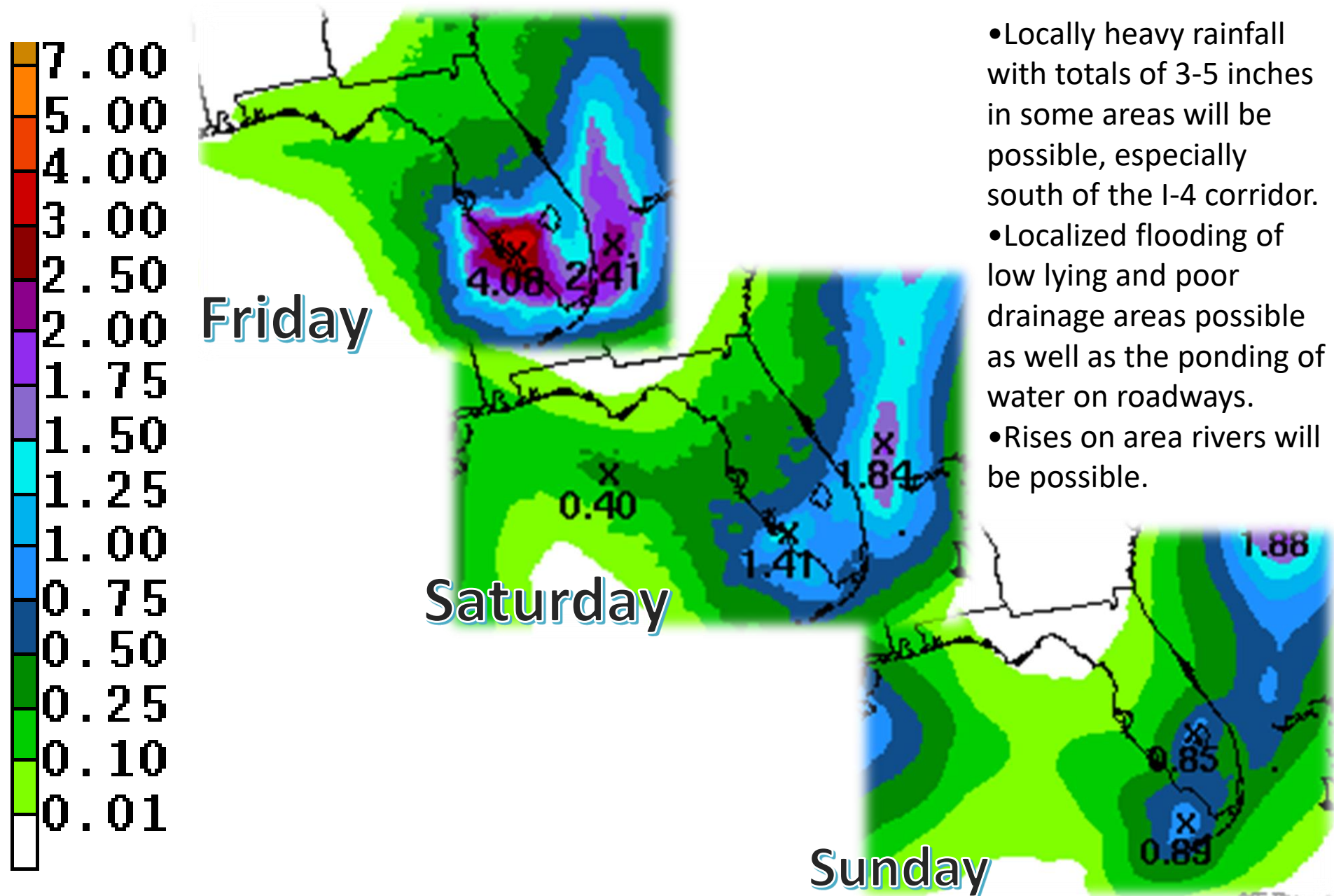
92L forecast to slowly move northeast ahead of a cold front.



Observed Rainfall – Past 3 Days



Forecast Daily Rainfall



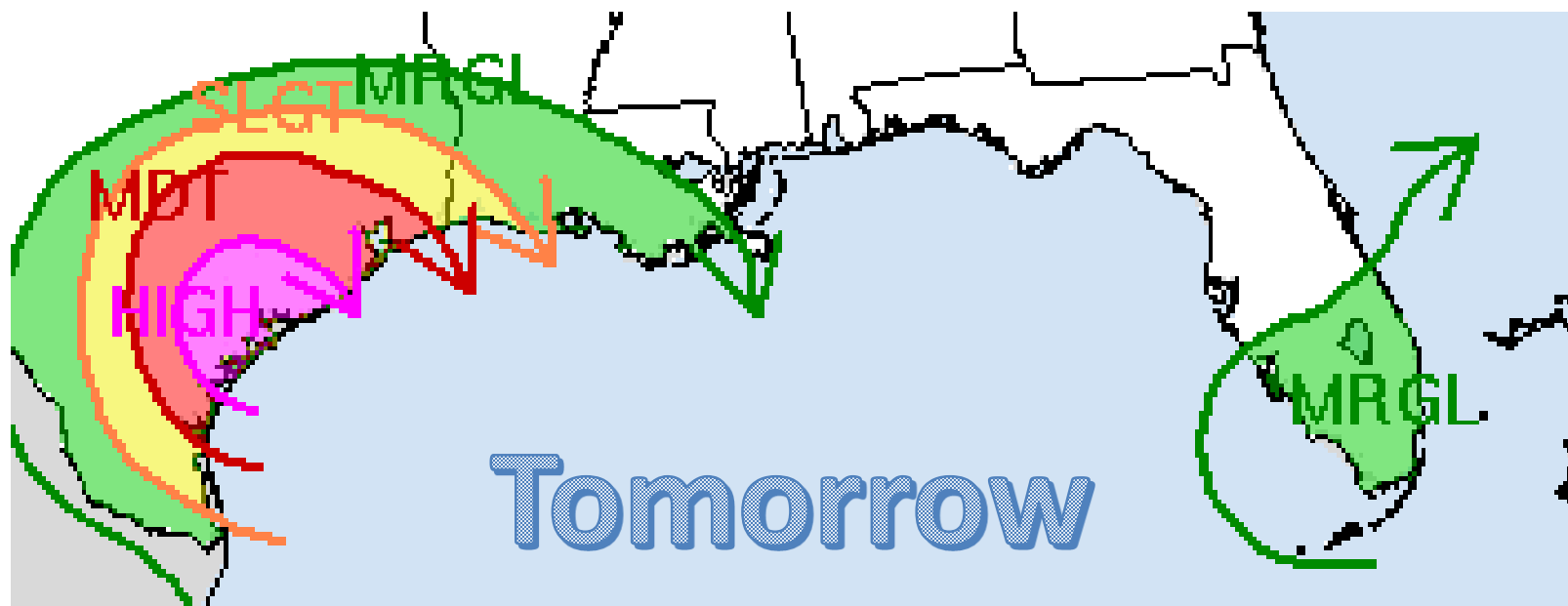
Excessive Rain Risk – Next 2 Days

Risk of rainfall exceeding flash flood guidance
to the right of a line

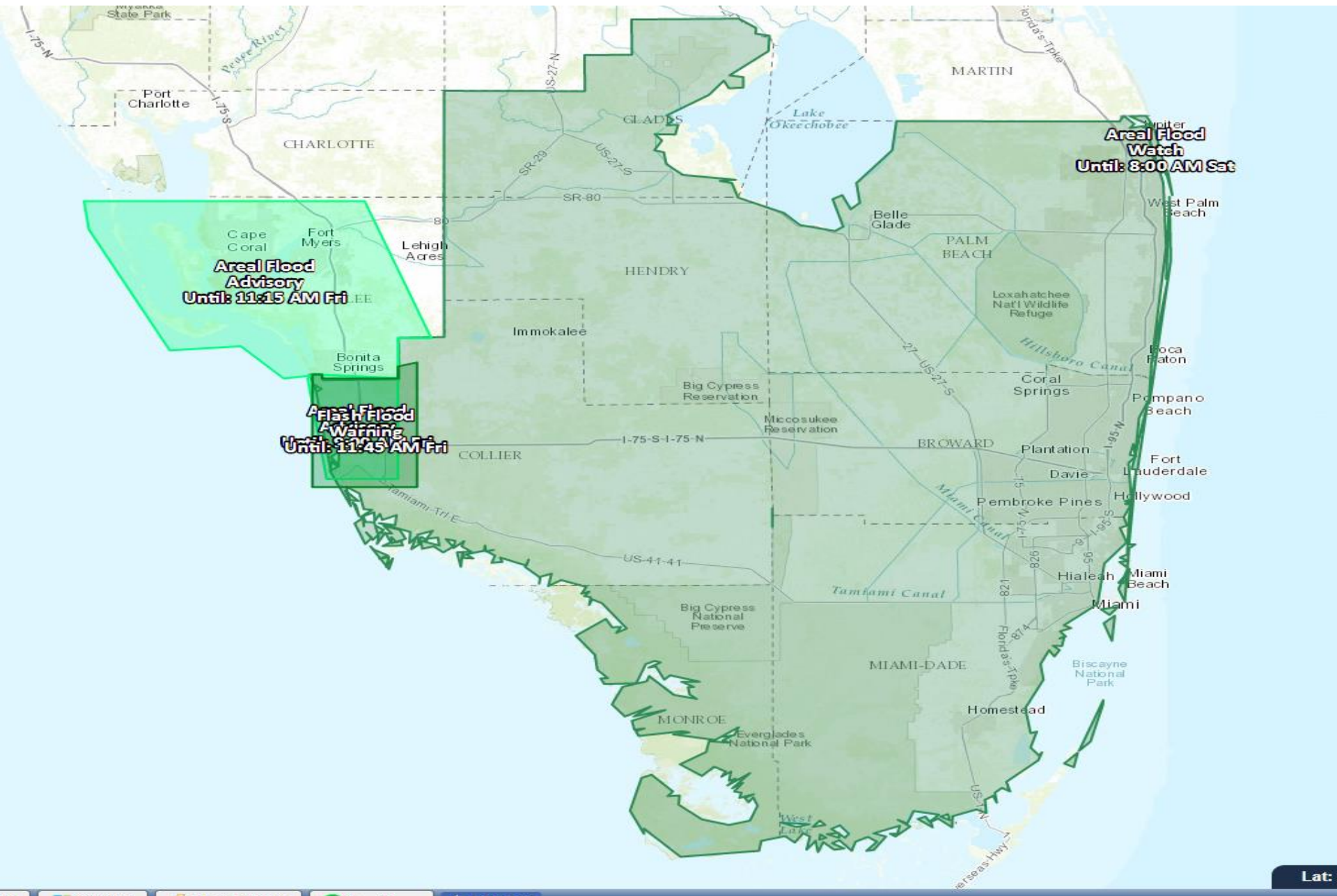
MDT: 10%-15%

MRGL: 2%-5%

SLGT: 5%-10%



Active Flood Advisories



Hurricane Harvey

5 AM EDT Fri Aug 25 2017

Position 25.9N 95.4W

Maximum Winds 105 mph

Gusts 125 mph

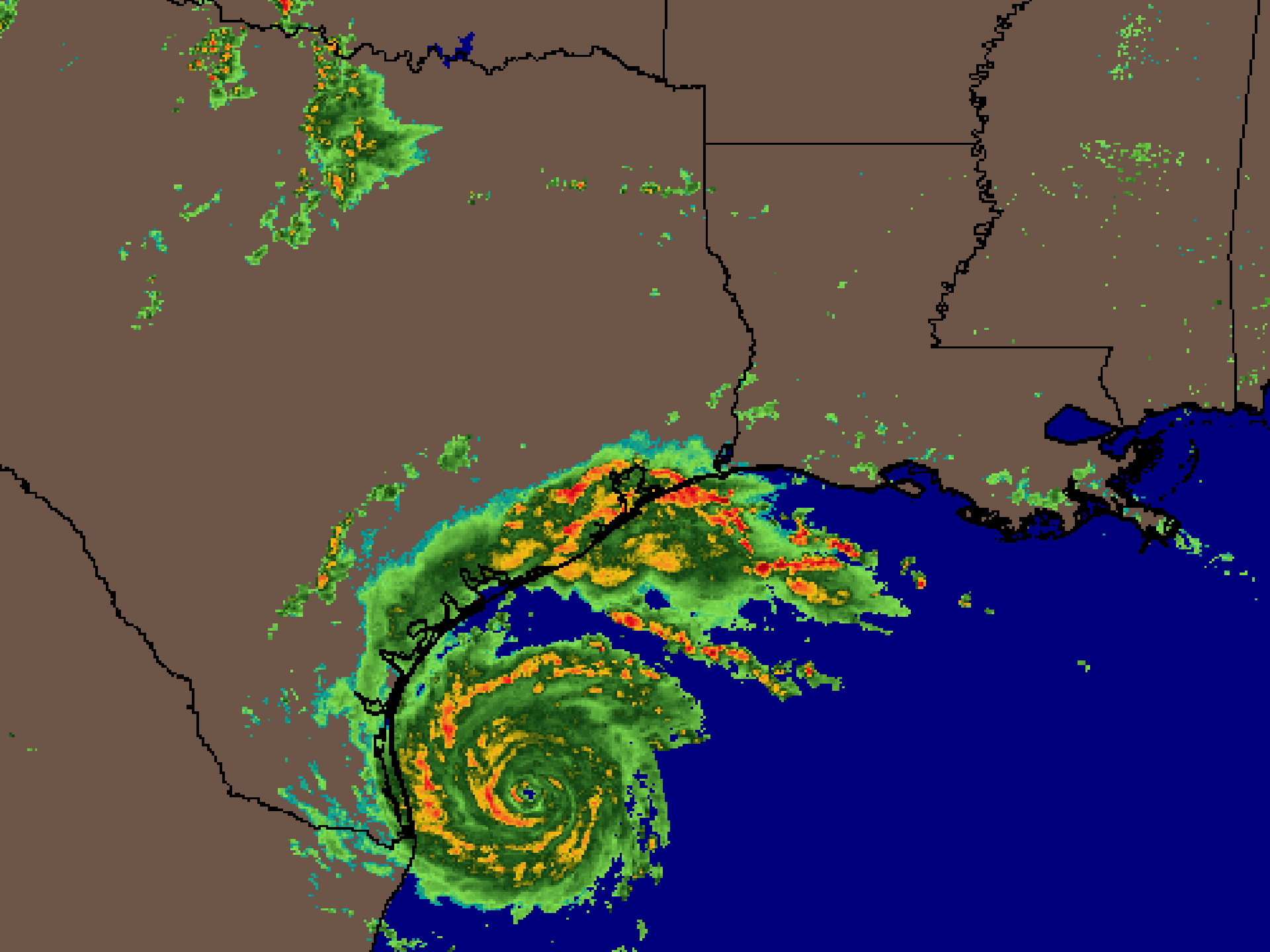
Movement NW at 9 mph

Minimum Pressure 967 mb (28.55 inches)

Blue Marble basemap imagery courtesy NASA

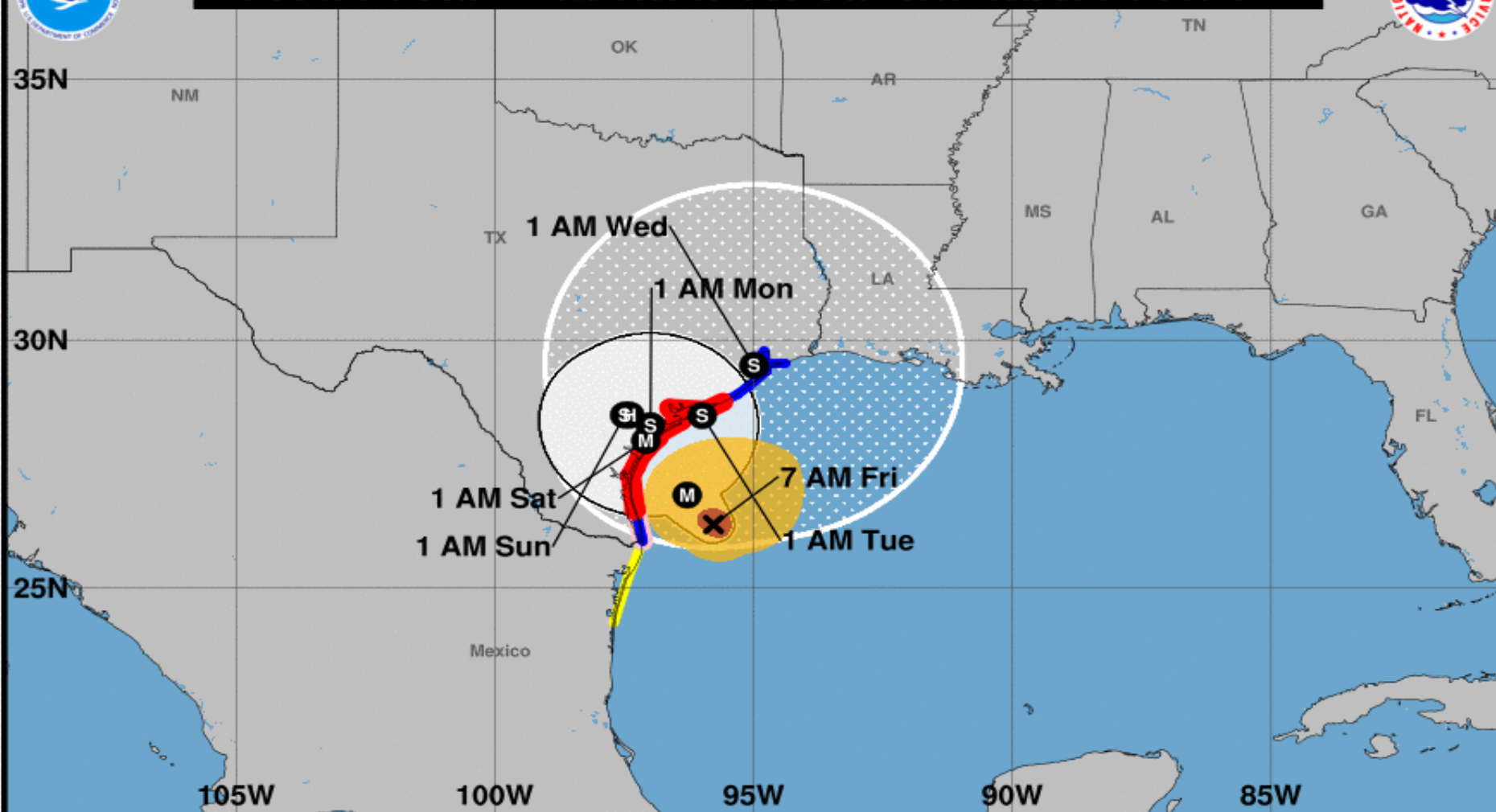
Satellite 12:37 PM UTC
8:37 AM EDT







Note: The cone contains the probable path of the storm center but does not show the size of the storm. Hazardous conditions can occur outside of the cone.



Hurricane Harvey

Friday August 25, 2017

7 AM CDT Intermediate Advisory 20A

NWS National Hurricane Center

Current information: x

Center location 26.3 N 95.8 W

Maximum sustained wind 110 mph

Movement NW at 10 mph

Forecast positions:

● Tropical Cyclone ○ Post/Potential TC

Sustained winds: D < 39 mph

S 39-73 mph H 74-110 mph M > 110 mph

Potential track area:

Day 1-3 Day 4-5

Watches:

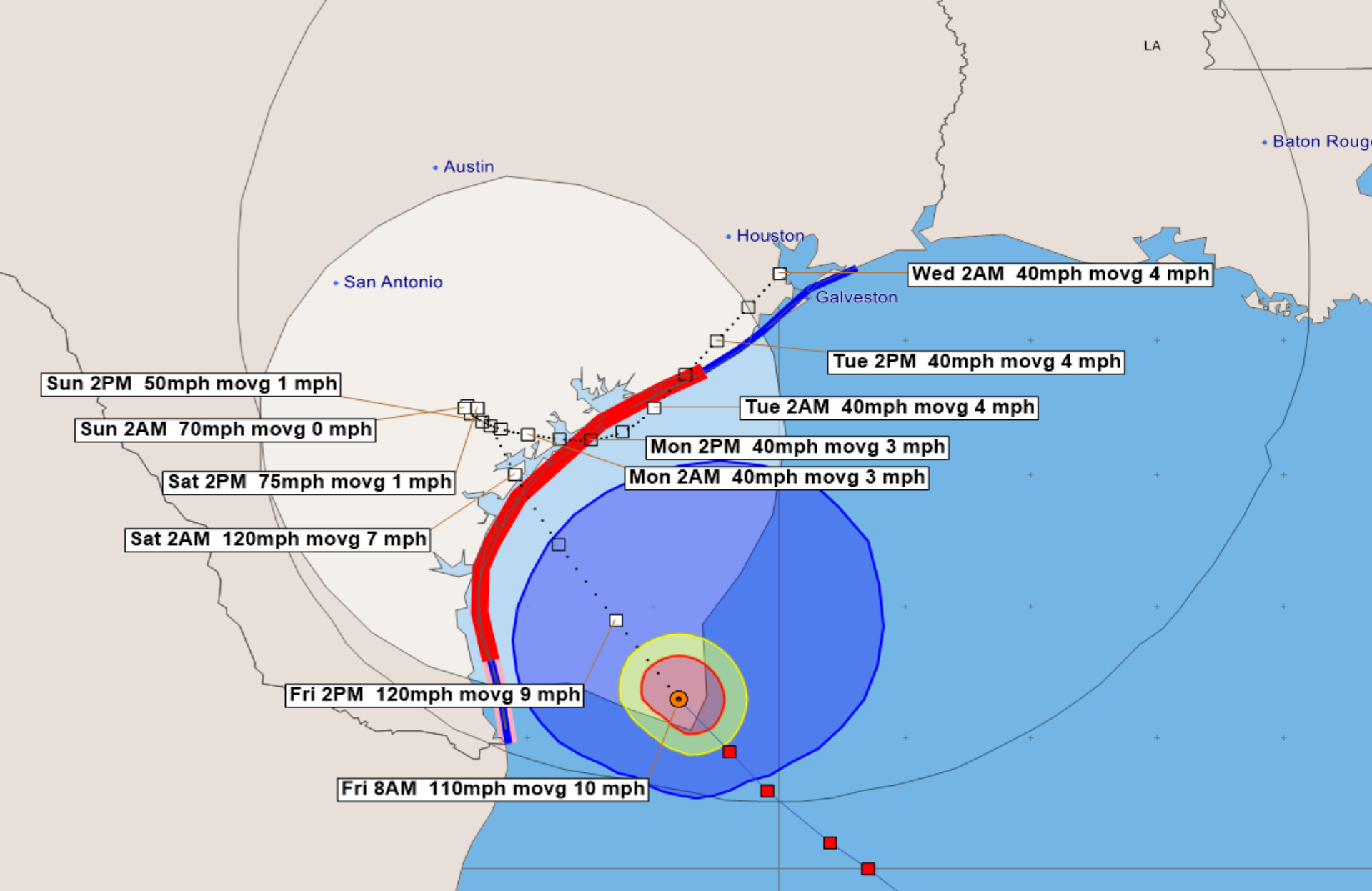
Hurricane Trop Stm

Warnings:

Hurricane Trop Stm

Current wind extent:

Hurricane Trop Stm



Hurricane Harvey - Friday, August 25, 2017 8 AM EDT Advisory #20A

Center Location: 26.3 N 95.8 W Maximum Sustained Winds: 110 mph (Cat 2) Movement: 10 mph NW

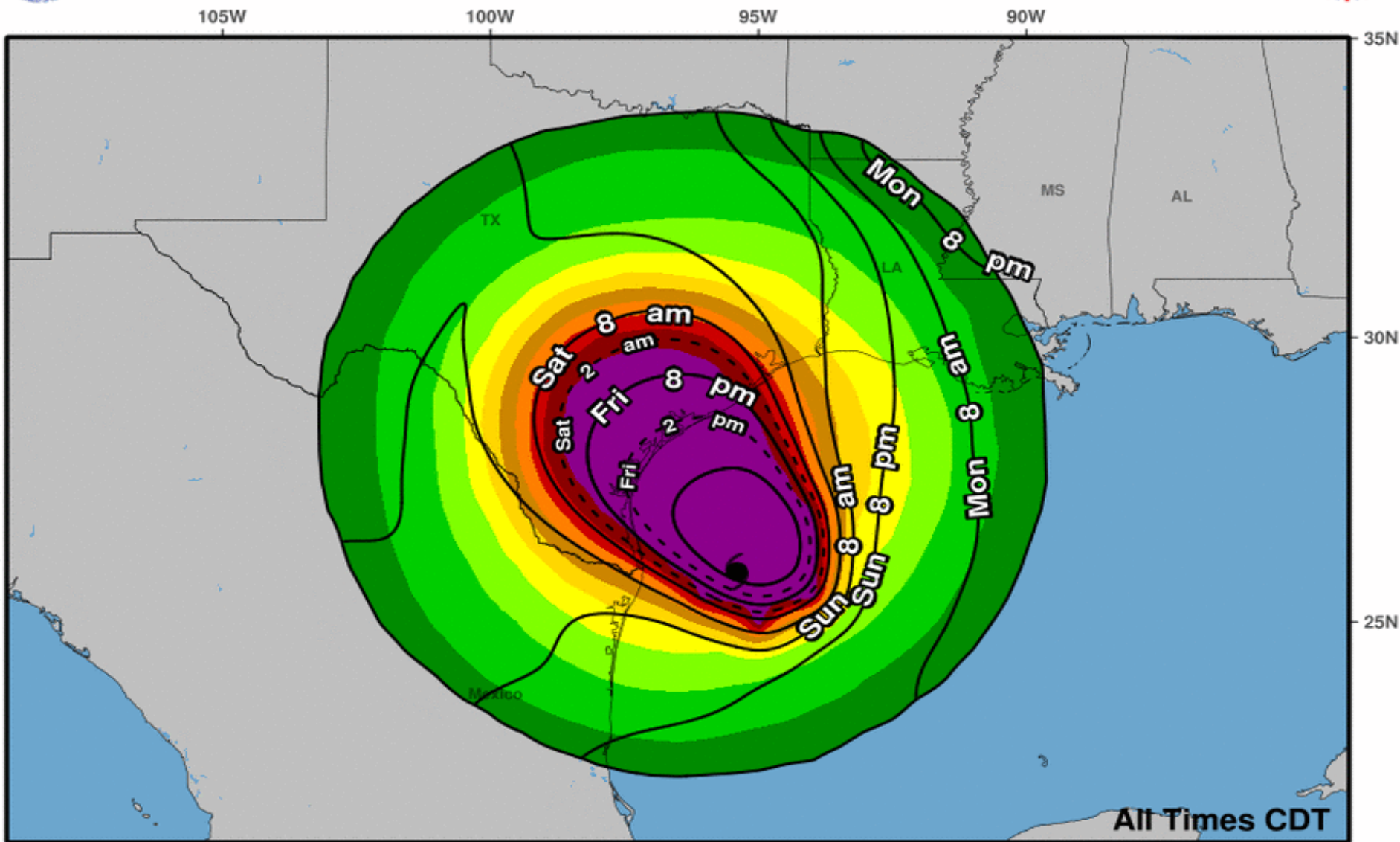
forecast positions Potential Track Area: day 1-3 day 4-5 Surface Wind Field: at current location

Watches: hurricane tropical storm Warnings: hurricane tropical storm

Sustained Wind Speeds: tropical storm >= 34kt/39mph strong tropical storm >= 50kt/58mph hurricane >= 64kt/74mph



Most Likely Arrival Time of Tropical-Storm-Force Winds

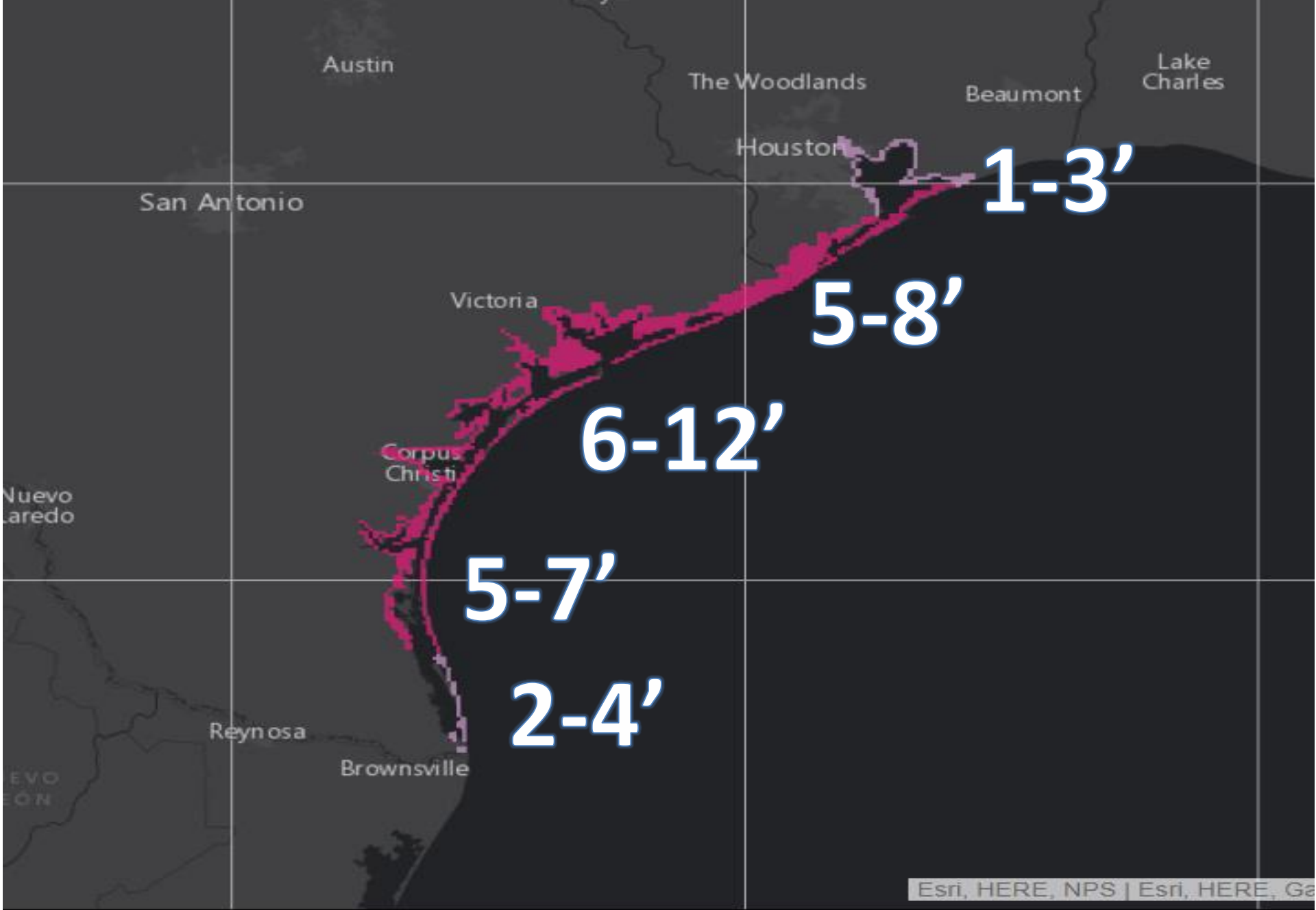


Hurricane Harvey
Fri. Aug. 25, 2017 4 am CDT
Advisory 20

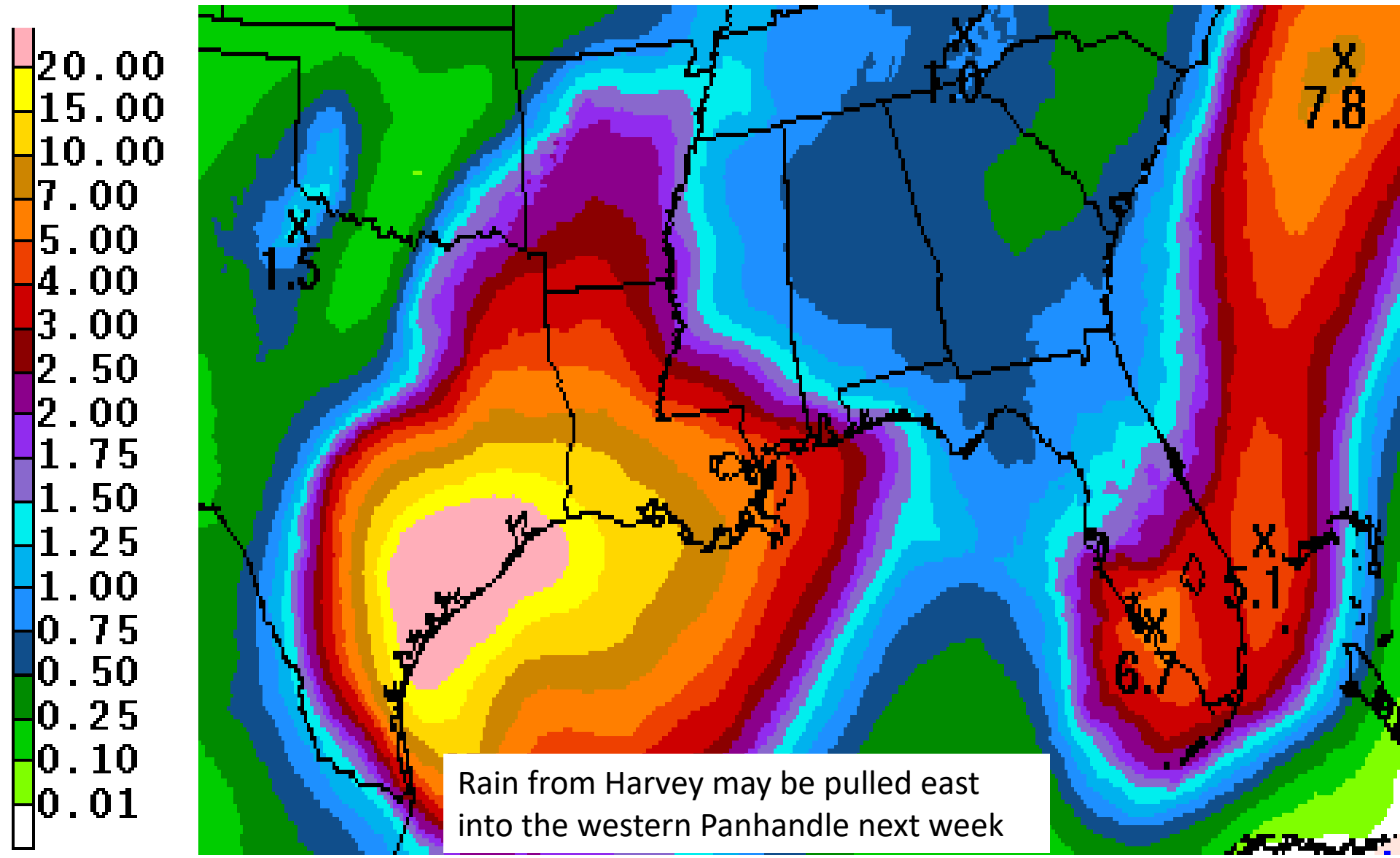
Storm Location &
Wind Speed (knots)
○ <34 ◐ 34-63 ● ≥64

Five-day chance of receiving sustained 34+ knot (39+ mph) winds

5	10	20	30	40	50	60	70	80	90	100 %
---	----	----	----	----	----	----	----	----	----	-------



7 Day Cumulative Forecast Rainfall (does not account for isolated higher totals)

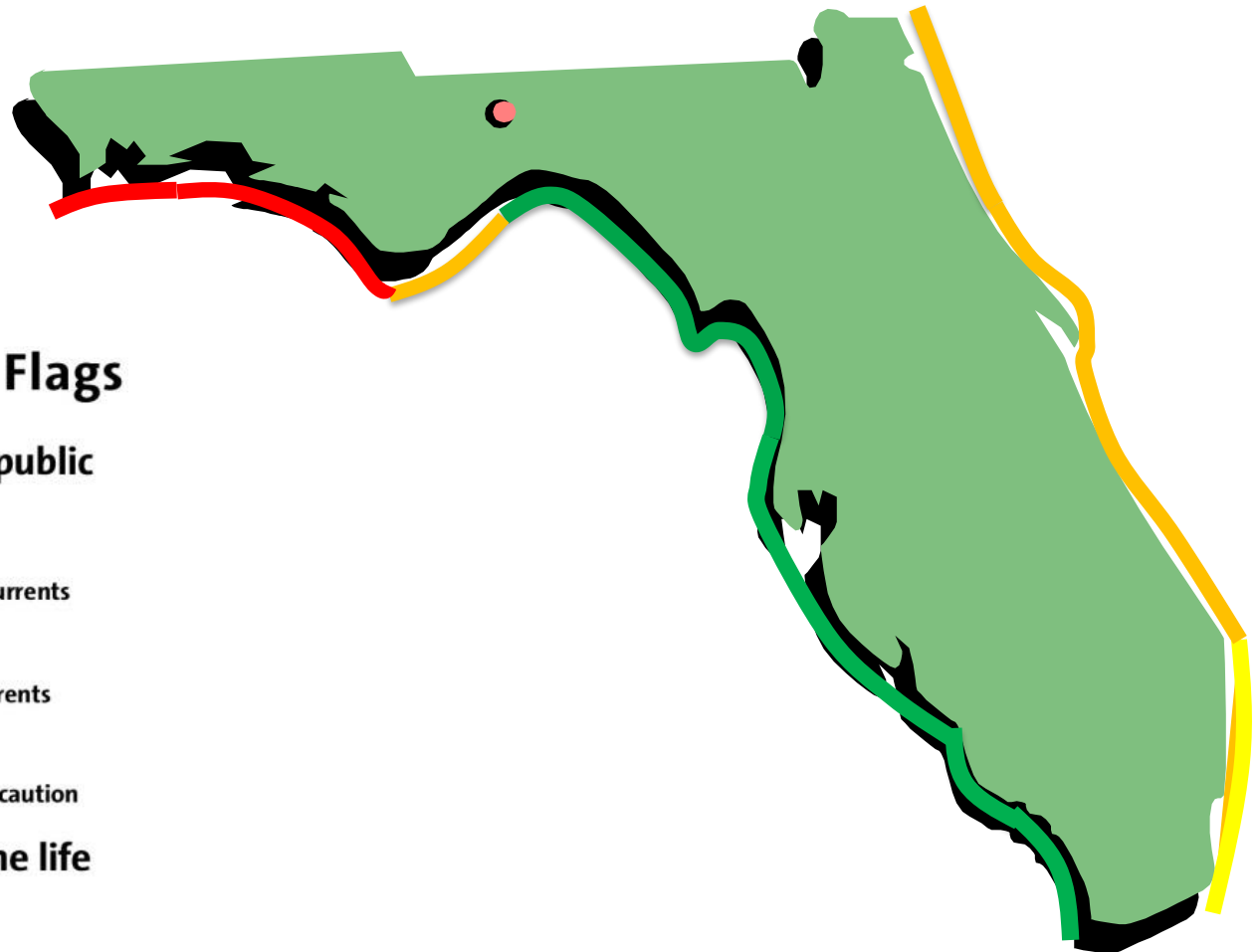


Increased Wave Heights and Swells Expected to Today and Continue Through Next Week

Rip Current Outlook This Weekend

Beach Warning Flags

-  **Water closed to public**
-  **High Hazard**
High surf and/or strong currents
-  **Medium Hazard**
Moderate surf and/or currents
-  **Low Hazard**
Calm conditions, exercise caution
-  **Dangerous marine life**



Summary

- At 1pm EDT Thursday, Harvey was upgraded to a hurricane.
- At 8am EDT Friday, the center of Hurricane Harvey was located 140 miles southeast Corpus Christi, Texas, or about 600 miles southwest of Pensacola, Florida.
- Maximum sustained winds have increased to near 110 mph, making Harvey a Category 2 hurricane on the Saffir-Simpson Hurricane Wind Scale.
- Additional strengthening is expected, and Harvey is forecast to be a major hurricane by landfall tonight.
- Thereafter, gradual weakening is forecast, but since a good portion of the circulation will remain over water, the weakening process could be slower than normal.
- Harvey is moving towards the northwest at 10 mph, but is forecast to slow down significantly once it moves inland, remain nearly stationary Saturday and Sunday, then move slowly northeast until a cold front finally lifts the remnants of the system northward later next week.
- The National Hurricane Center forecast depicts a slow moving tropical cyclone near or over Texas during the next five days, resulting in a historic multi-day heavy rain event for much of southeastern Texas and southwestern Louisiana.
- Tropical wave Invest Area 92L remains located near the West Coast of Florida, producing scattered showers and thunderstorms.
- Development is not expected through the next 48 hours as it affects Florida, but there is a small chance of development once it moves northeast and away from Florida Sunday or Monday before it merges with a cold front.
- As a result, the National Hurricane Center continues to give 92L a 20% (low) chance of development over the next 48 hours, and a 40% (medium) chance of development within the next five days.

Florida Outlook:

- Hurricane Harvey does not pose a direct threat to Florida over the next five days, but will result in a high risk for rip currents along the Florida Panhandle Coast starting Friday and continuing through much of next week.
- In addition, tropical moisture from the system may also be pulled east and increase rain chances early next week in the Panhandle.
- Invest 92L will affect South Florida for the next few days in the form of scattered to numerous showers and thunderstorms.
- Rainfall amounts of 1-3" have already fallen across South Florida, and another 3-5" is possible during the next 3 days, especially south of the I-4 corridor.
- This may result in localized flooding of low lying and poor drainage areas as well as the ponding of water on roadways.
- There is a slight risk (level 2 of 5) for flash flooding for Southwest Florida today, with a marginal risk (level 1 or 5) for all of South Florida this weekend.
- A **Flood Watch** remains in effect for South Florida (Broward, Collier, Glades, Hendry, Miami-Dade, mainland Monroe, Palm Beach counties) until 8am Saturday and could be extended further into the weekend.
- Rises on area rivers will be possible.

Another briefing packet will be issued on Saturday. For the latest information on the tropics, please visit the National Hurricane Center website at www.hurricanes.gov



TROPICAL UPDATE

Created by:

Amy Godsey, Chief State Meteorologist
amy.godsey@em.myflorida.com

State Meteorological Support Unit
Florida Division of Emergency
Management

Users wishing to subscribe (approval pending) to this distribution list, register at https://public.govdelivery.com/accounts/FLDEM/subscriber/new?topic_id=SERT_Met_Tropics.

Other reports available for subscription are available at <https://public.govdelivery.com/accounts/FLDEM/subscriber/new?preferences=true>