



TROPICAL UPDATE

9 AM EDT

Tuesday, August 22, 2017

**Remnants of Harvey (90%) &
Invest 92L (30%)**

This update is intended for government and emergency response officials, and is provided for informational and situational awareness purposes only. Forecast conditions are subject to change based on a variety of environmental factors. For additional information, or for any life safety concerns with an active weather event please contact your County Emergency Management or Public Safety Office, local National Weather Service forecast office or visit the National Hurricane Center website at www.nhc.noaa.gov.

Atlantic Basin Satellite Image

09:00 22-AUG-2017 GMT Copyright © 1998-2016 WSI Corporation <http://www.wsi.com>





Five-Day Graphical Tropical Weather Outlook

National Hurricane Center Miami, Florida



www.hurricanes.gov

All Disturbances

1. Formation chance through 48 hours...high...70 percent.
Formation chance through 5 days...high...90 percent.
2. Formation chance through 48 hours...low...20 percent.
Formation chance through 5 days...low...30 percent.

8:00 am EDT
Tue Aug 22 2017

100°W 90°W 80°W 70°W 60°W 50°W 40°W 30°W 20°W

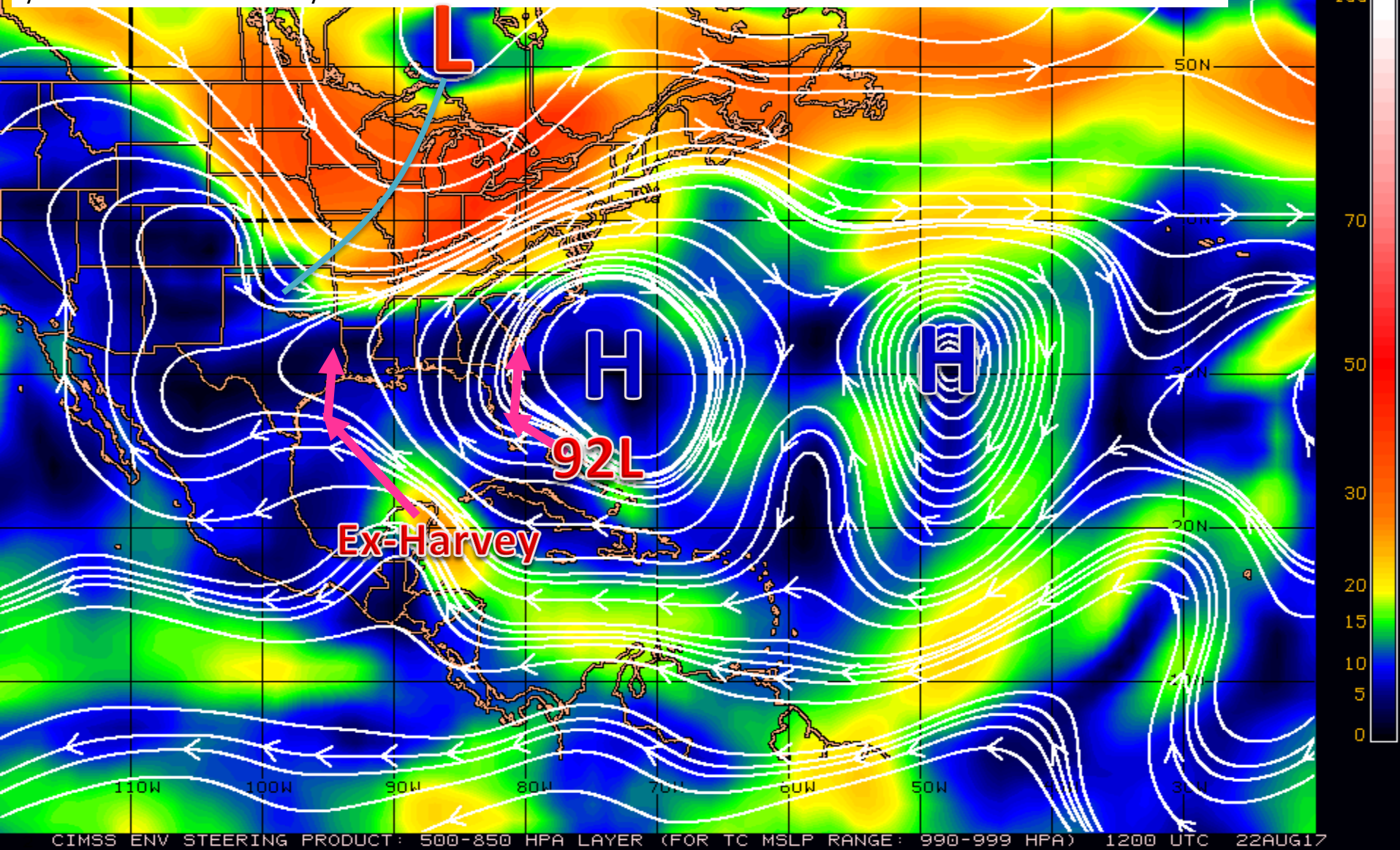
Current Disturbances and Five-Day Cyclone Formation Chance: ✕ < 40% ✕ 40-60% ✕ > 60%

Tropical or Sub-Tropical Cyclone: ○ Depression ○ Storm ○ Hurricane

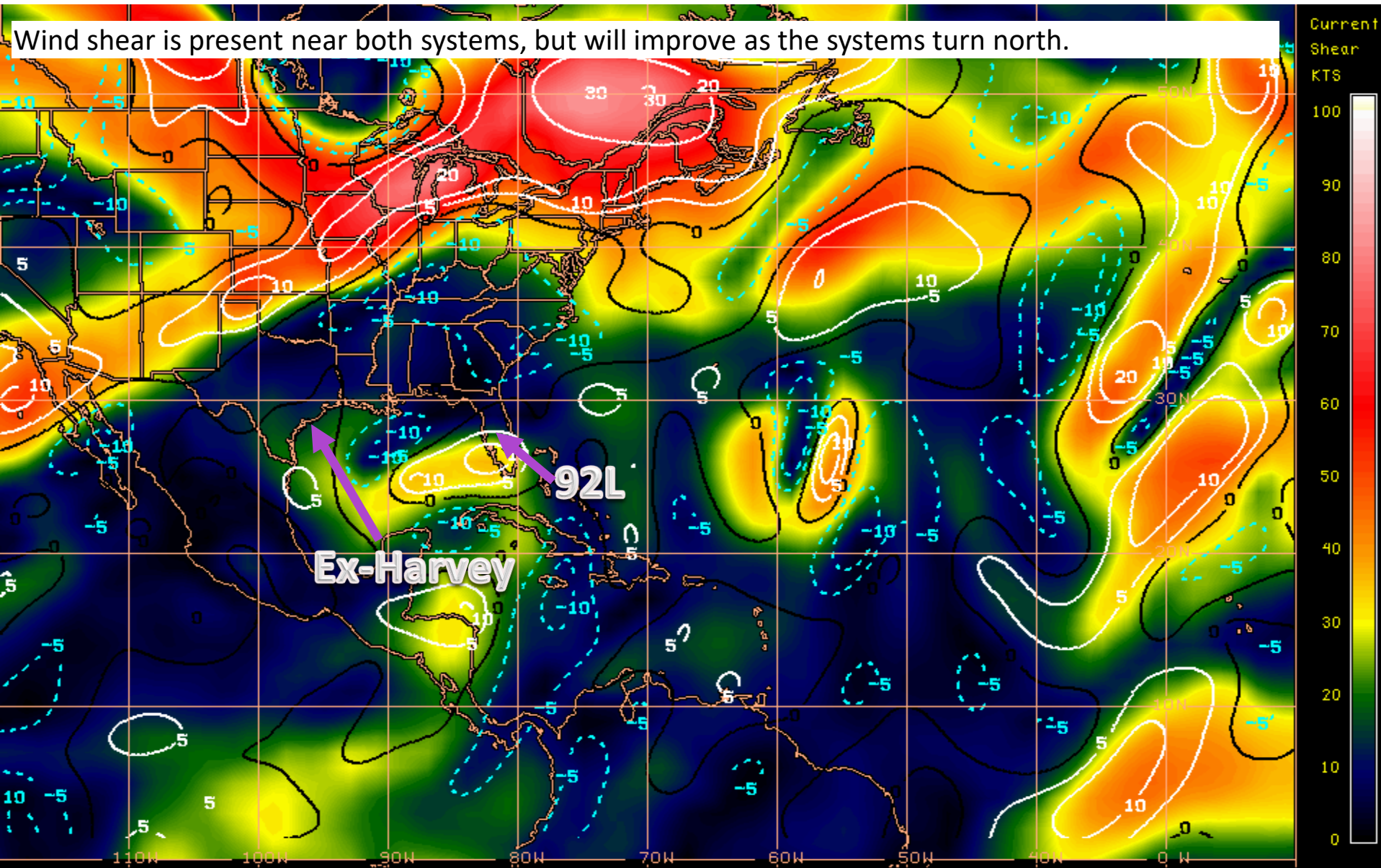
⊗ Post-Tropical Cyclone ✕ Remnants

Steering Currents

The remnants of Harvey and 92L will be generally steered between high in the western Atlantic and an approaching cold front over the Ohio Valley, inducing a northwest and then northward movement of both systems over the next 3 days

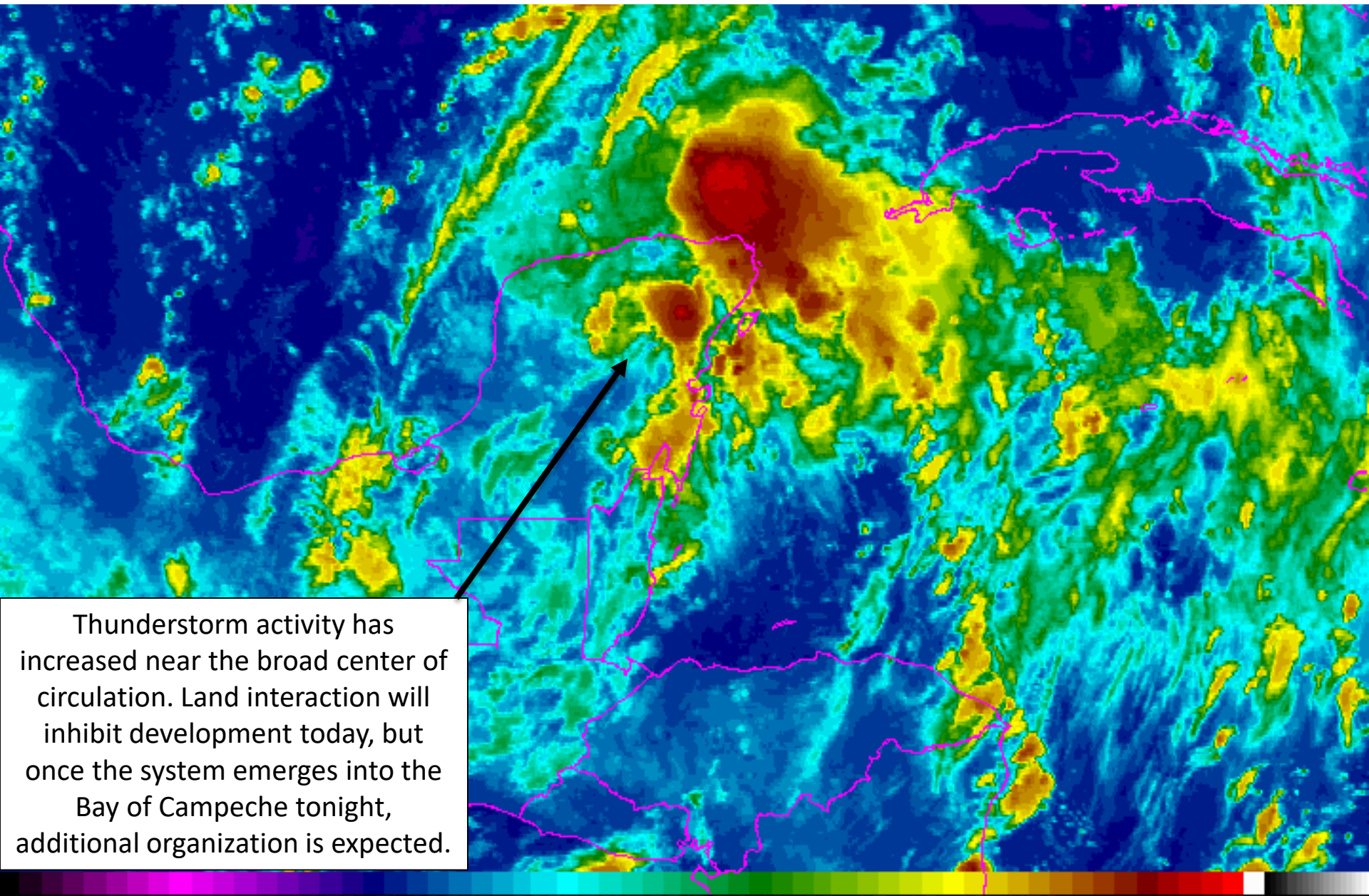


Current Wind Shear (shaded) and Shear Tendency (lines)



Shear Tendency (KTS) Over Past 24 Hours: Increasing — Decreasing ----

Remnants of Harvey (Area 1) Satellite

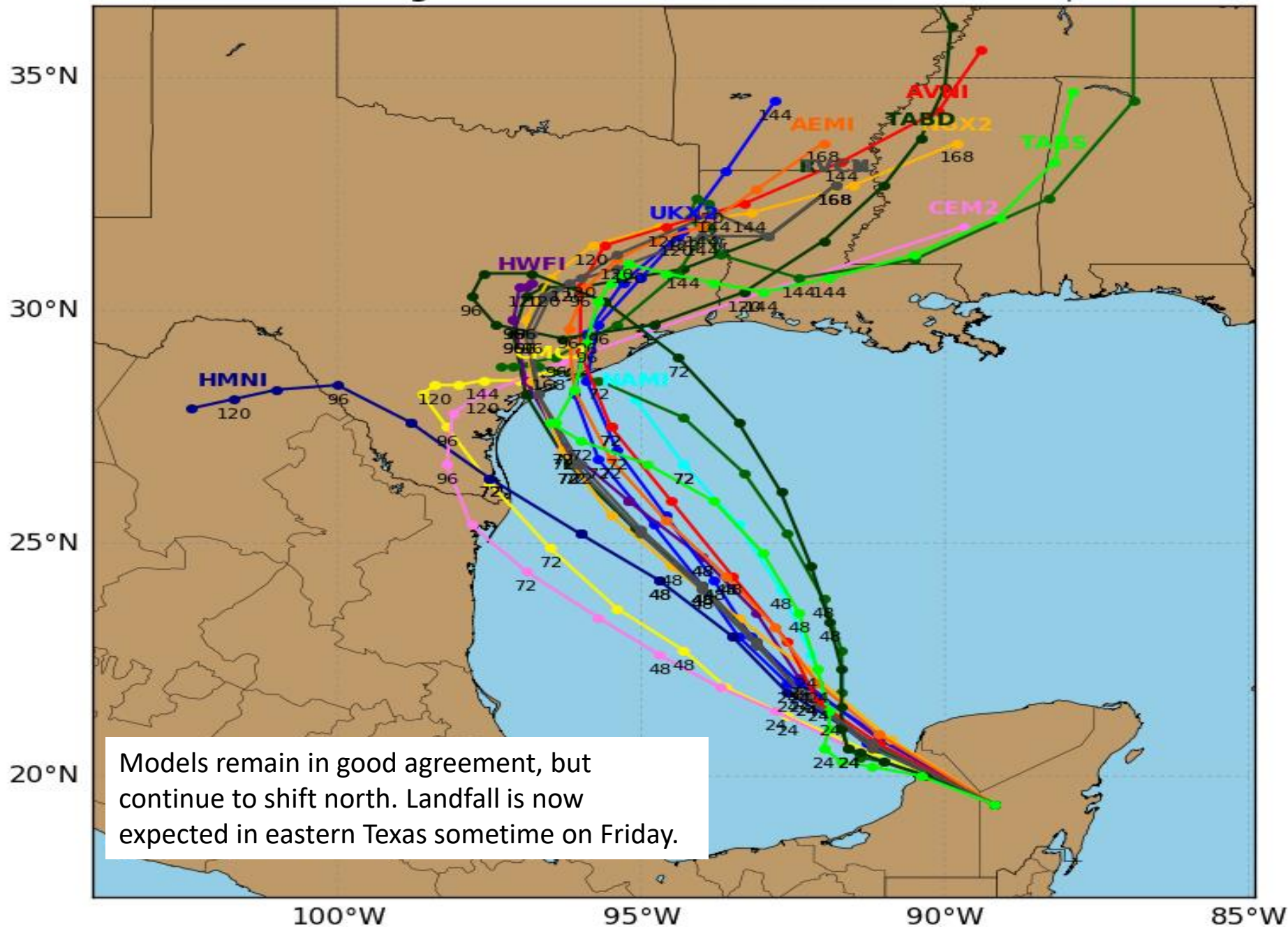


Thunderstorm activity has increased near the broad center of circulation. Land interaction will inhibit development today, but once the system emerges into the Bay of Campeche tonight, additional organization is expected.

Invest 09L Model Track Guidance

Initialized at 12z Aug 22 2017

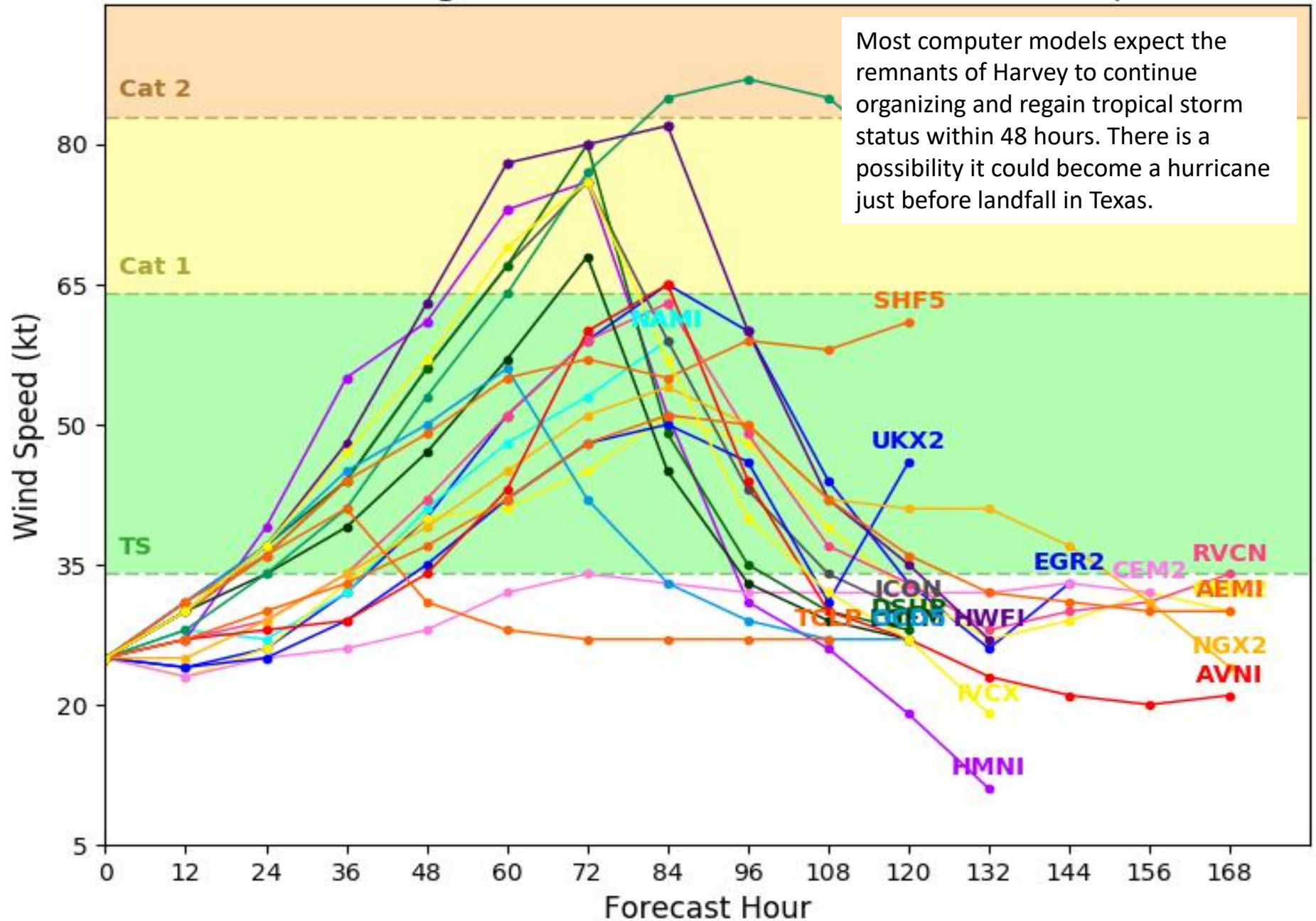
Levi Cowan - tropicaltidbits.com



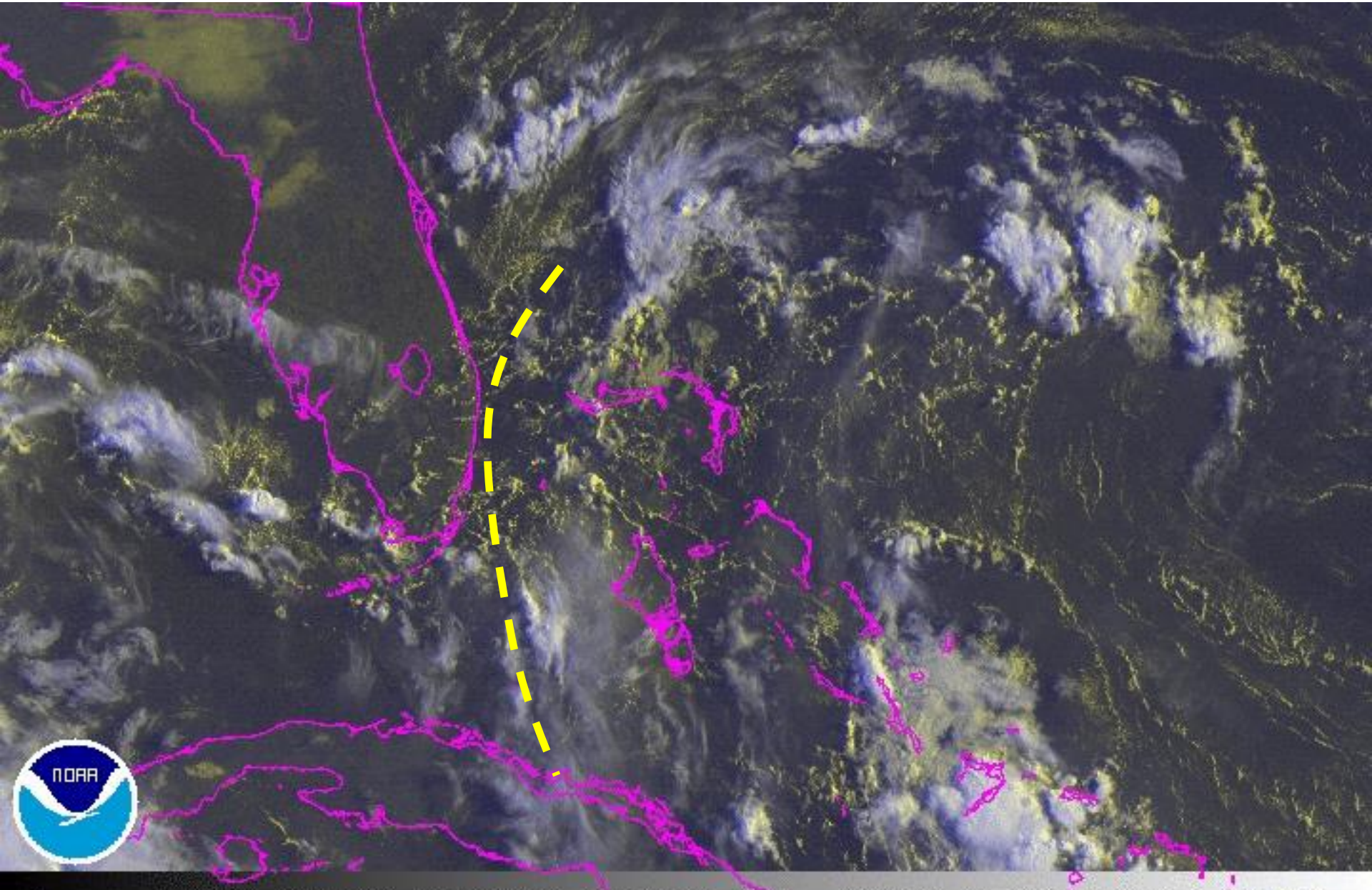
Invest 09L Model Intensity Guidance

Initialized at 12z Aug 22 2017

Levi Cowan - tropicaltidbits.com

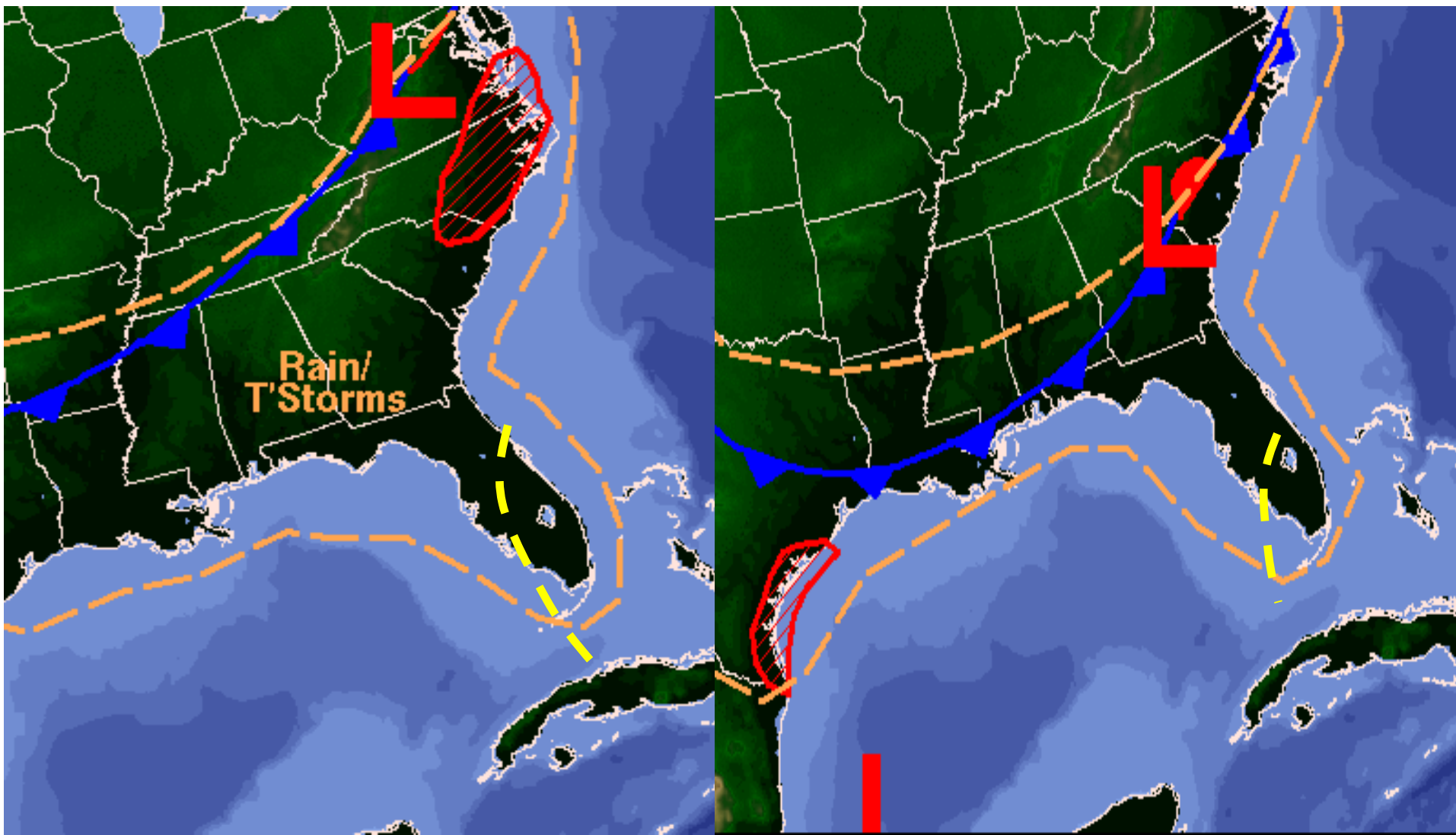


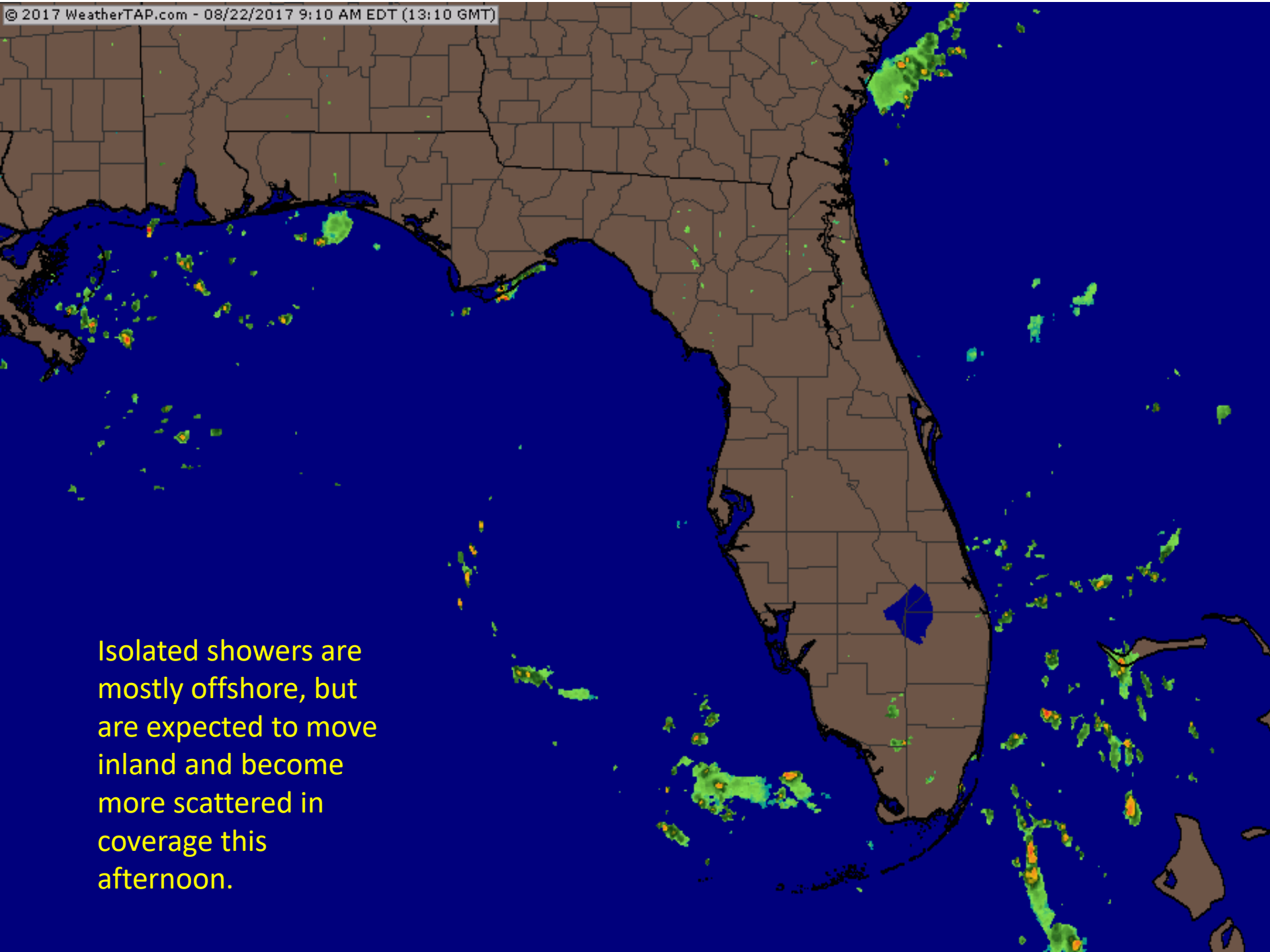
92L (Area 2) Satellite



Forecast Weather Maps

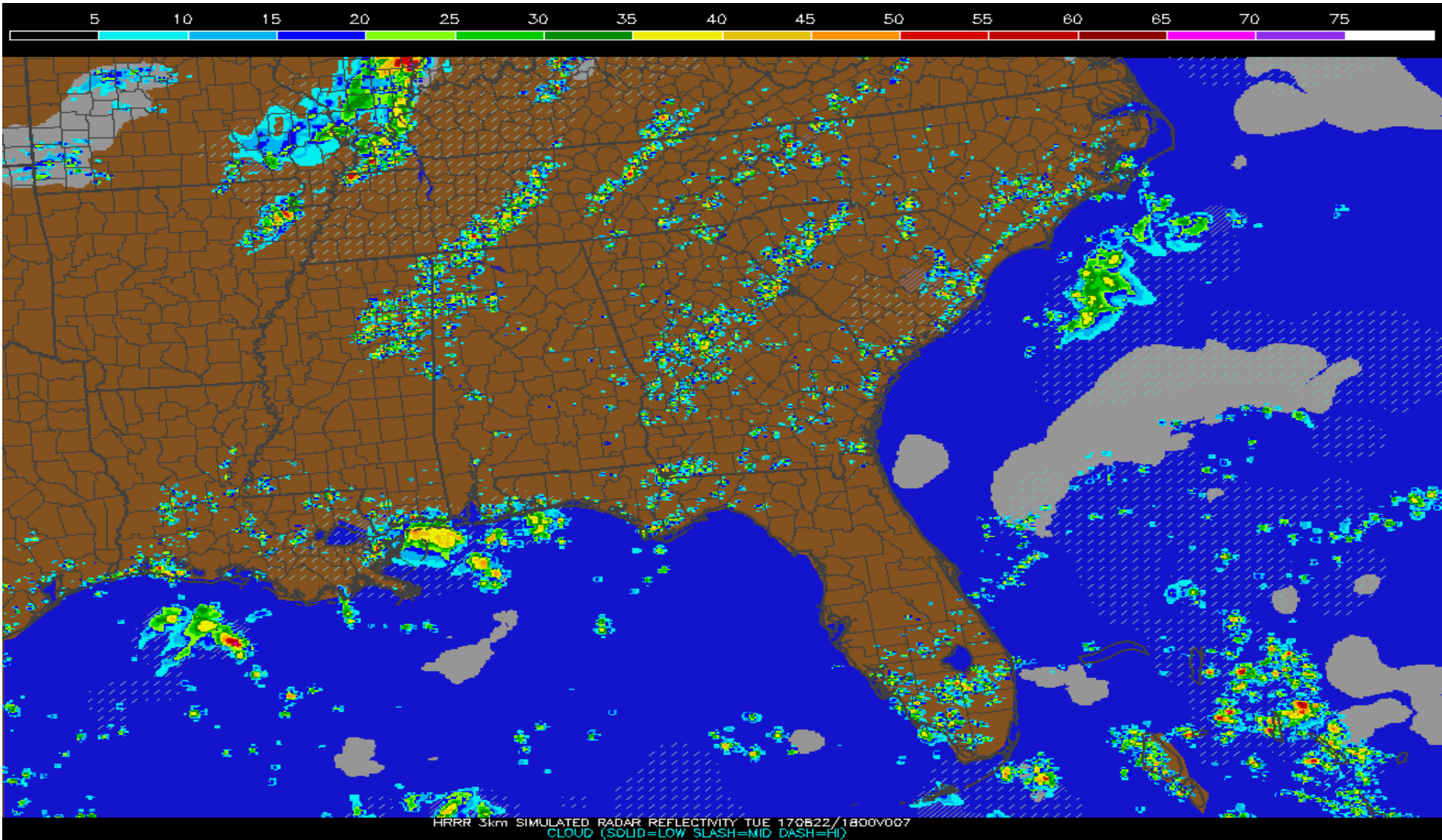
Wednesday (8/23) & Thursday (8/24)



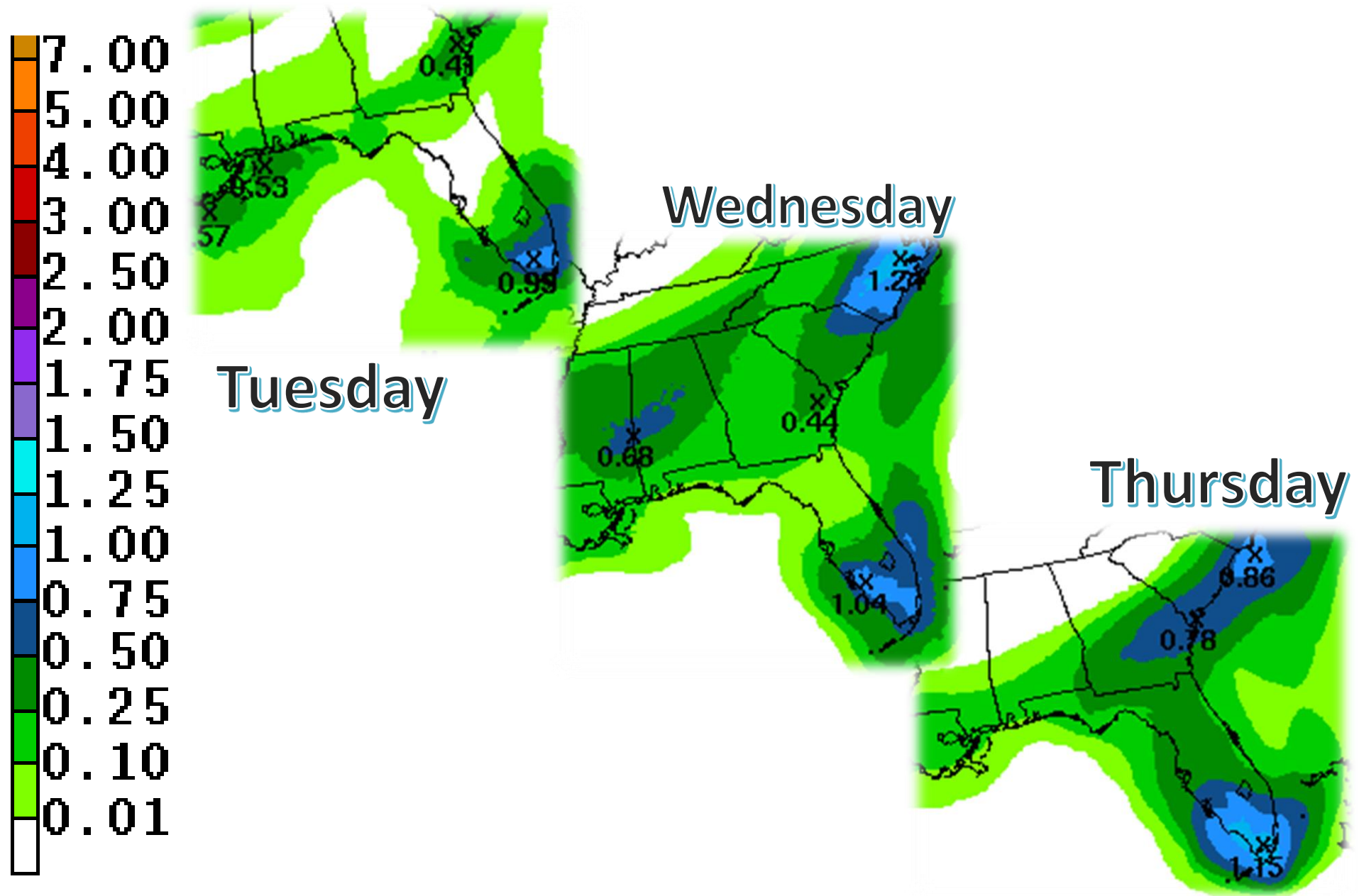


Isolated showers are mostly offshore, but are expected to move inland and become more scattered in coverage this afternoon.

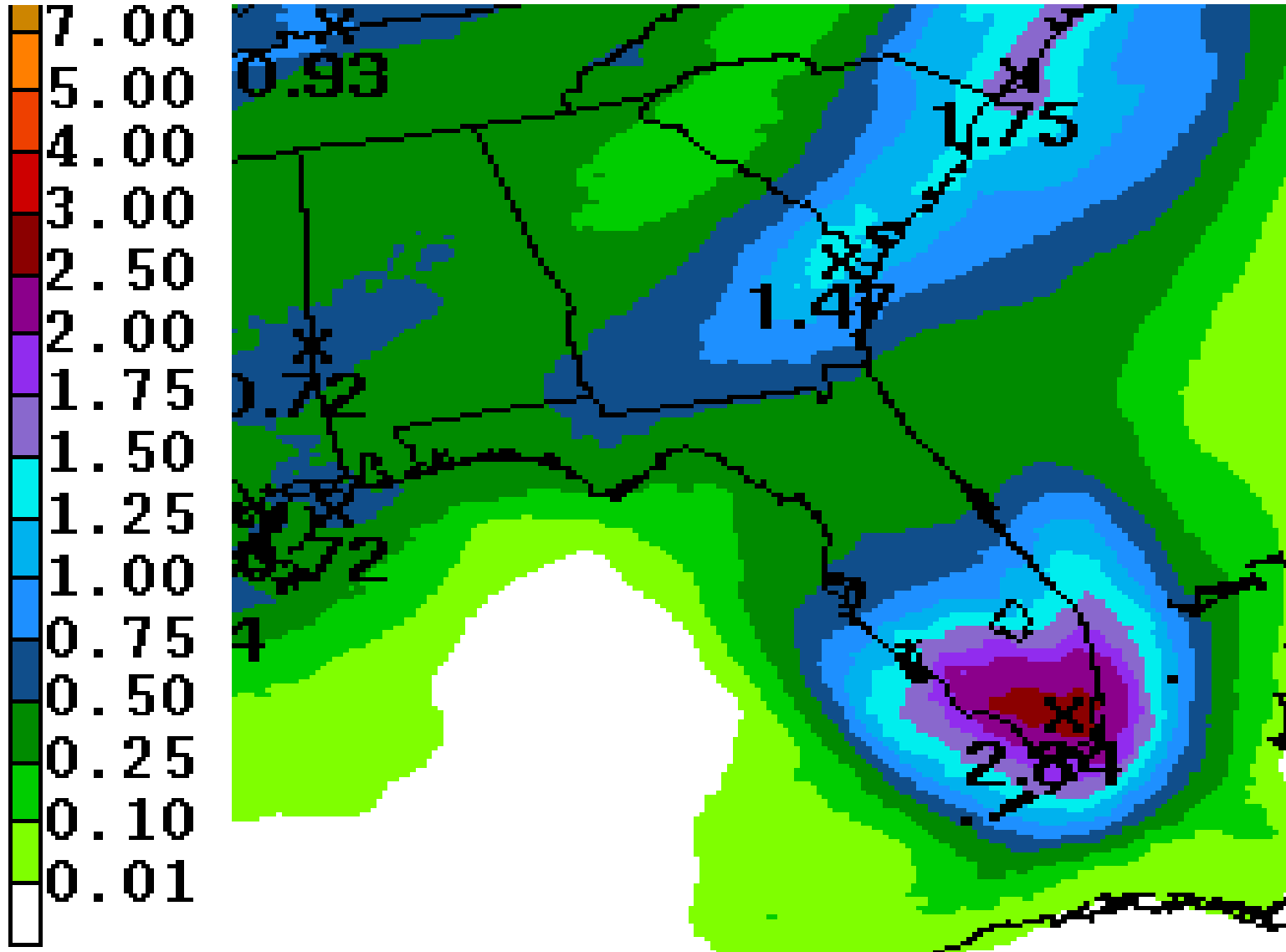
Forecast Future Radar – 2pm Tuesday



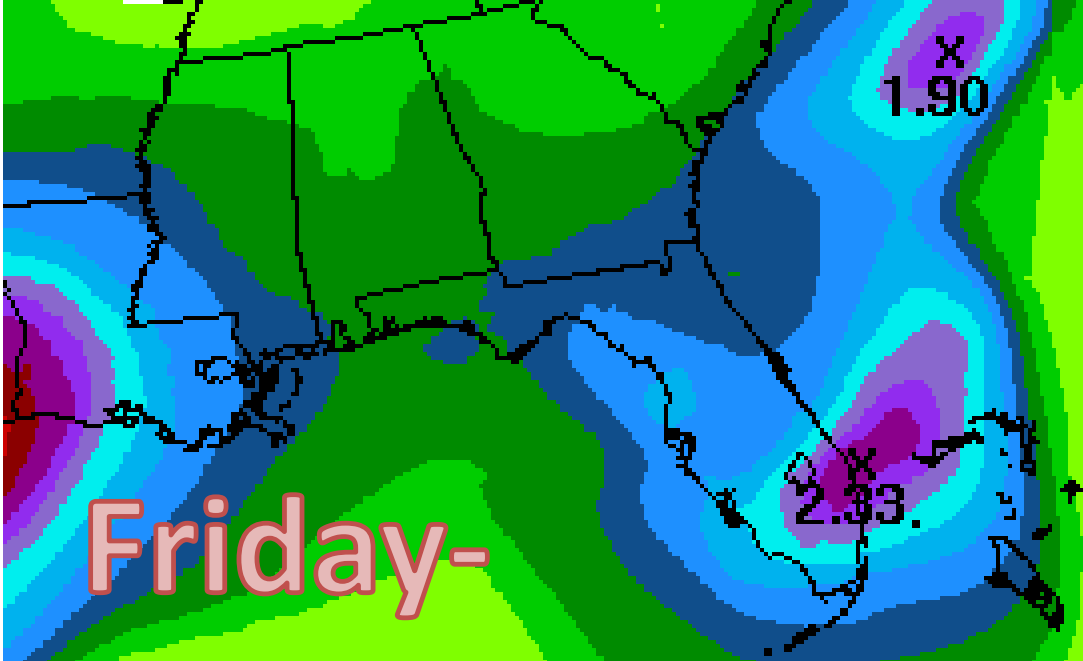
Forecast Daily Rainfall



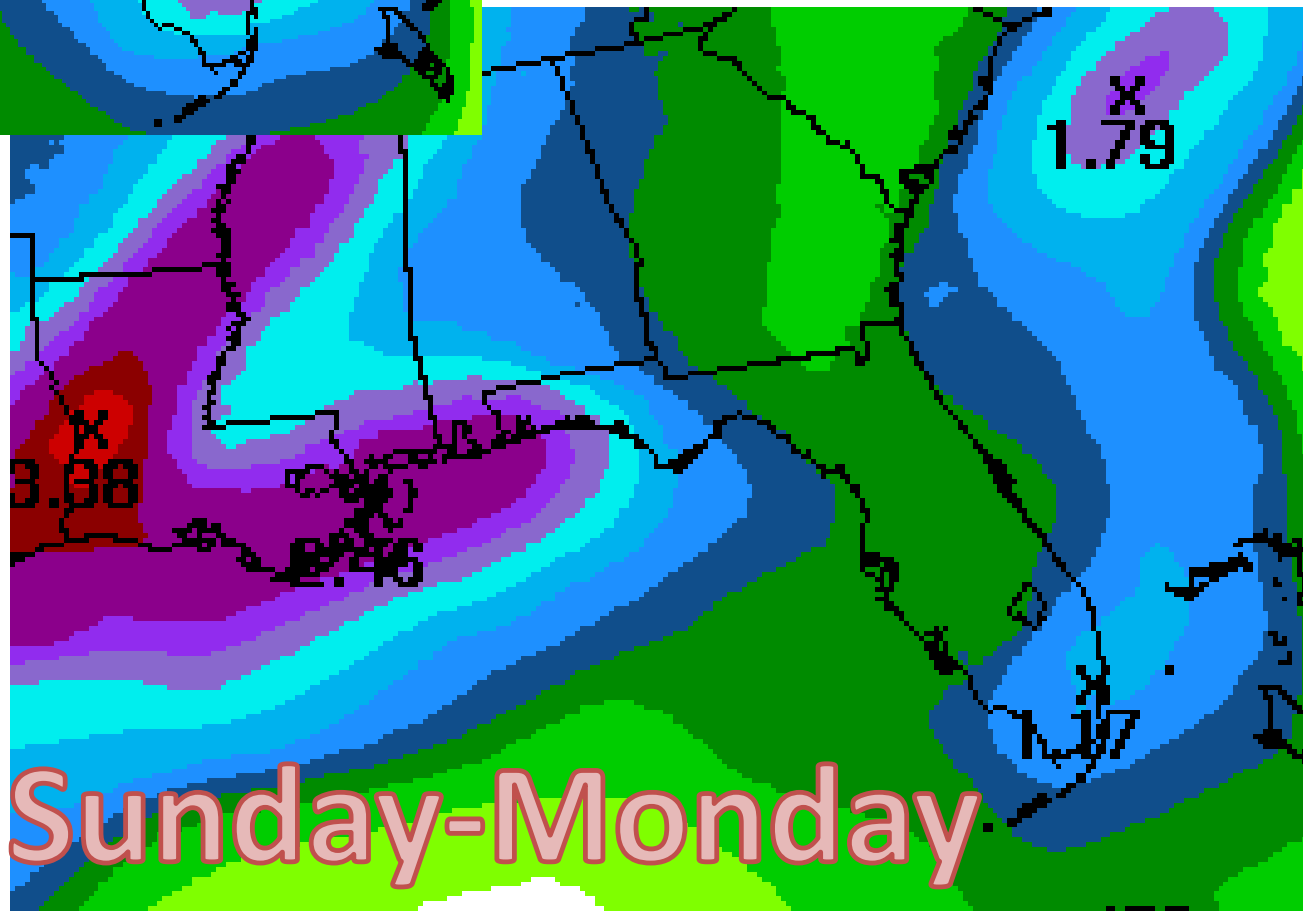
3 Day Cumulative Rainfall (does not account for isolated higher totals)



Forecast Rainfall



Saturday



Summary

- The remnants of Harvey are currently located over the Yucatan Peninsula.
- While land interaction will limit development today, once the emerges into the Bay of Campeche and southwest Gulf of Mexico tonight, more organization is expected to occur.
- As a result, the National Hurricane Center gives it a 70% (high) chance of becoming a tropical depression within the next 48 hours, and a 90% (high) chance of it becoming a depression or storm within the next five days.
- This system is forecast to maintain a northwesterly track, moving into the western Gulf of Mexico and gradually intensifying, making landfall as a strong tropical storm or weak hurricane sometime on Friday along the Texas coast.
- Tropical wave Invest Area 92L is approaching the Southeast Florida coast, but is producing limited showers and thunderstorms.
- Development is not expected through the next 48 hours as it affects Florida, but there is a small chance of development once it moves northeast and away from Florida later in the week.
- The National Hurricane Center is giving 92L a 10% (low) chance of development over the next 48 hours, and a 30% (low) chance of development over the next five days.
- The system will continue to track slowly west during the next 24-48 hours into South Florida. After this time, a frontal boundary to the north is likely to interact with the system and pull it northeast away from Florida.

Florida Outlook:

- At this time, the remnants of Harvey do not pose a direct threat to Florida over the next five days, but it should be monitored.
- However, an increased risk for rip currents along the Florida Gulf Coast is likely later this week into the weekend.
- In addition, tropical moisture from the system may also be pulled northeast and increase rain chances late in the weekend into early next week.
- Invest 92L will affect South Florida for the next few days in the form of scattered showers and thunderstorms.
- Rainfall amounts of 0.5-2" per day are forecast for South Florida this week, with locally higher amounts possible.

Another briefing packet will be issued on Wednesday. For the latest information on the tropics, please visit the National Hurricane Center website at www.hurricanes.gov



TROPICAL UPDATE

Created by:

Amy Godsey, Chief State Meteorologist
amy.godsey@em.myflorida.com

State Meteorological Support Unit
Florida Division of Emergency
Management

Users wishing to subscribe (approval pending) to this distribution list, register at https://public.govdelivery.com/accounts/FLDEM/subscriber/new?topic_id=SERT_Met_Tropics.

Other reports available for subscription are available at <https://public.govdelivery.com/accounts/FLDEM/subscriber/new?preferences=true>