



TROPICAL UPDATE

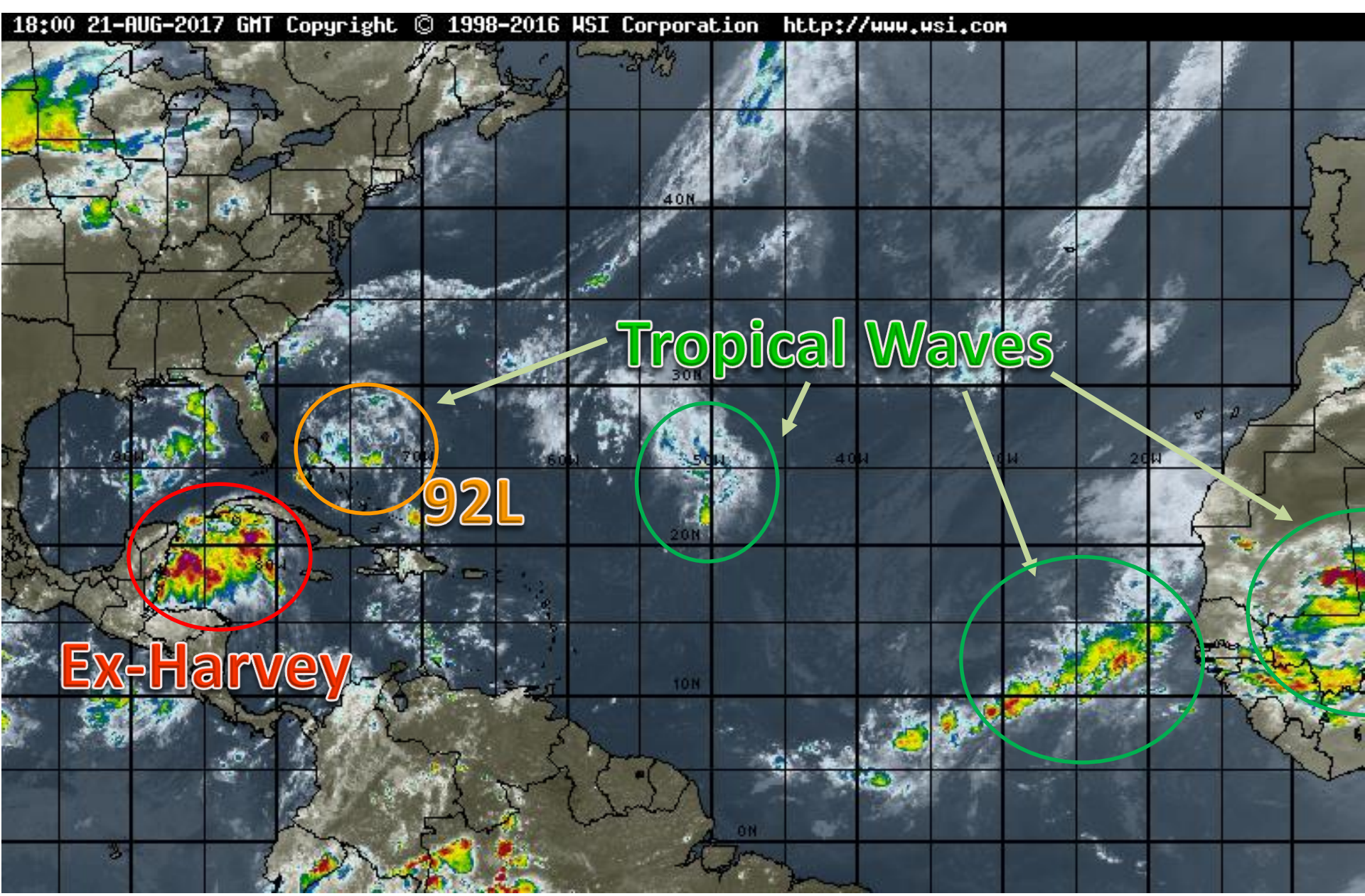
4 PM EDT

Monday, August 21, 2017

**Remnants of Harvey (90%) &
Invest 92L (40%)**

This update is intended for government and emergency response officials, and is provided for informational and situational awareness purposes only. Forecast conditions are subject to change based on a variety of environmental factors. For additional information, or for any life safety concerns with an active weather event please contact your County Emergency Management or Public Safety Office, local National Weather Service forecast office or visit the National Hurricane Center website at www.nhc.noaa.gov.

Atlantic Basin Satellite Image





Five-Day Graphical Tropical Weather Outlook

National Hurricane Center Miami, Florida



All Disturbances

www.hurricanes.gov

1. Formation chance through 48 hours...high...70 percent.
Formation chance through 5 days...high...90 percent.
2. Formation chance through 48 hours...low...20 percent.
Formation chance through 5 days...medium...40 percent.

2:00 pm EDT
Mon Aug 21 2017

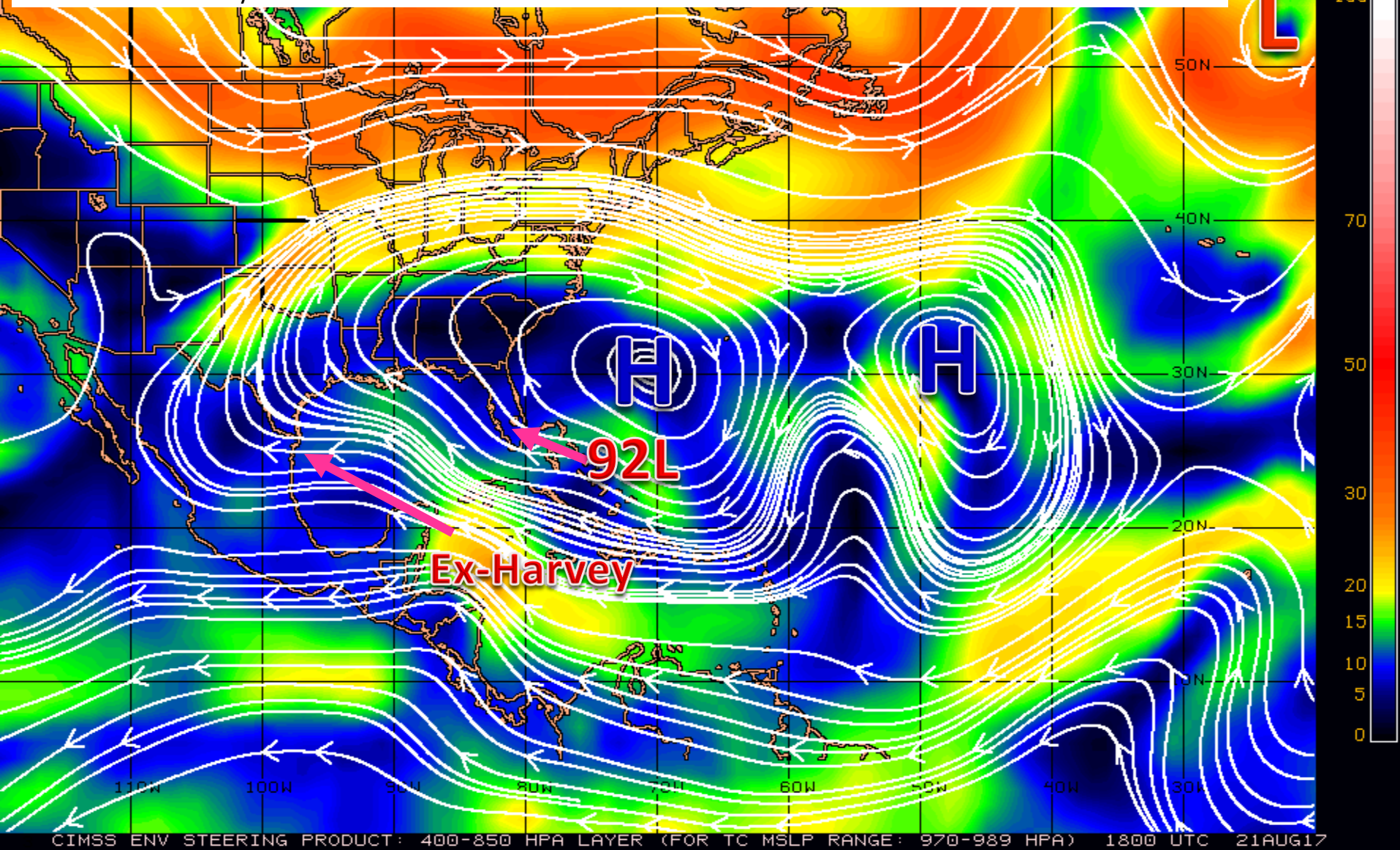
Current Disturbances and Five-Day Cyclone Formation Chance: < 40% 40-60% > 60%

Tropical or Sub-Tropical Cyclone: Depression Storm Hurricane

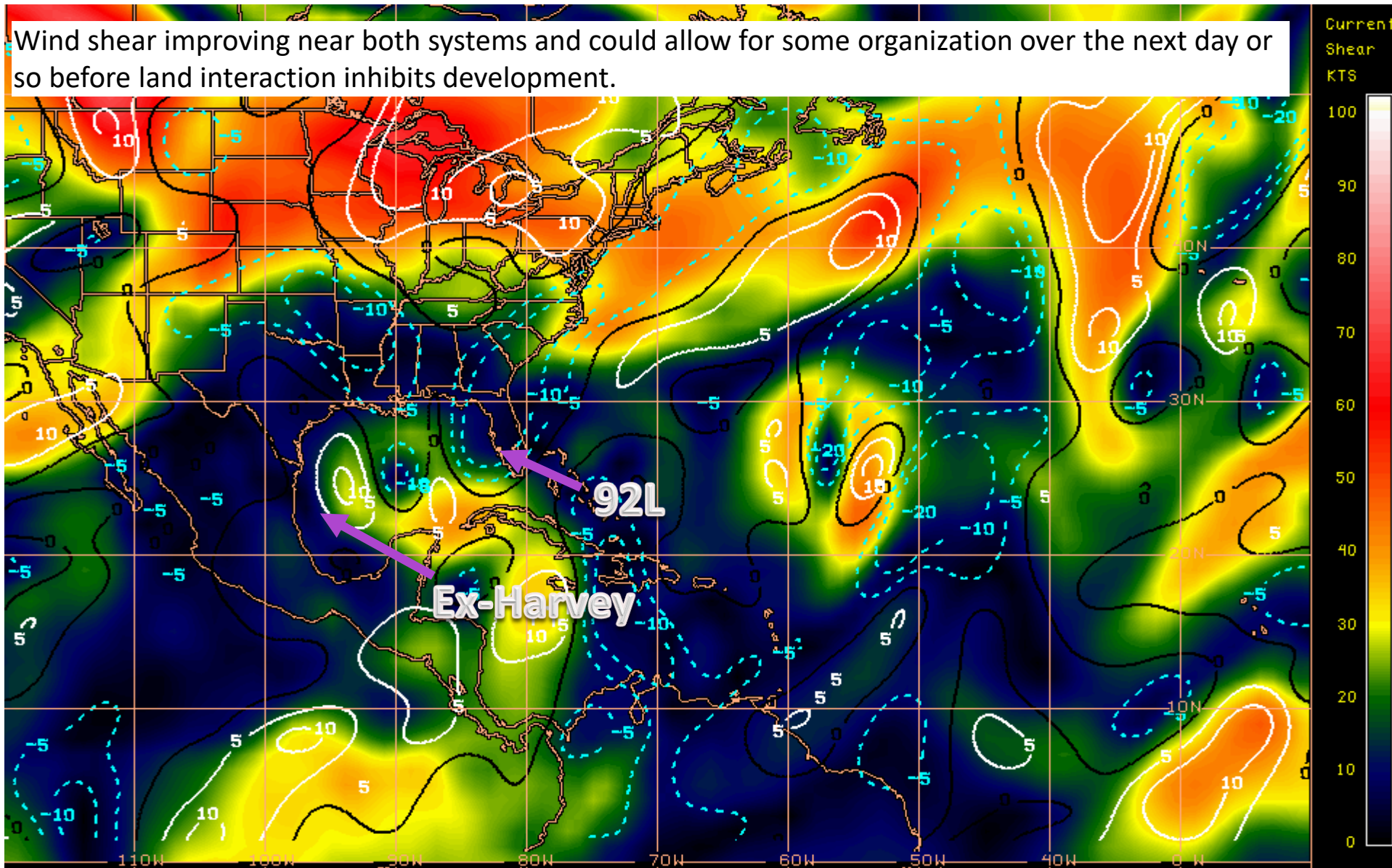
Post-Tropical Cyclone Remnants

Steering Currents

The remnants of Harvey and 92L will be generally steered by high in the western Atlantic. However, a frontal system moving towards the U.S. East Coast will weaken high pressure and may allow for a more northward movement of both systems later this week.

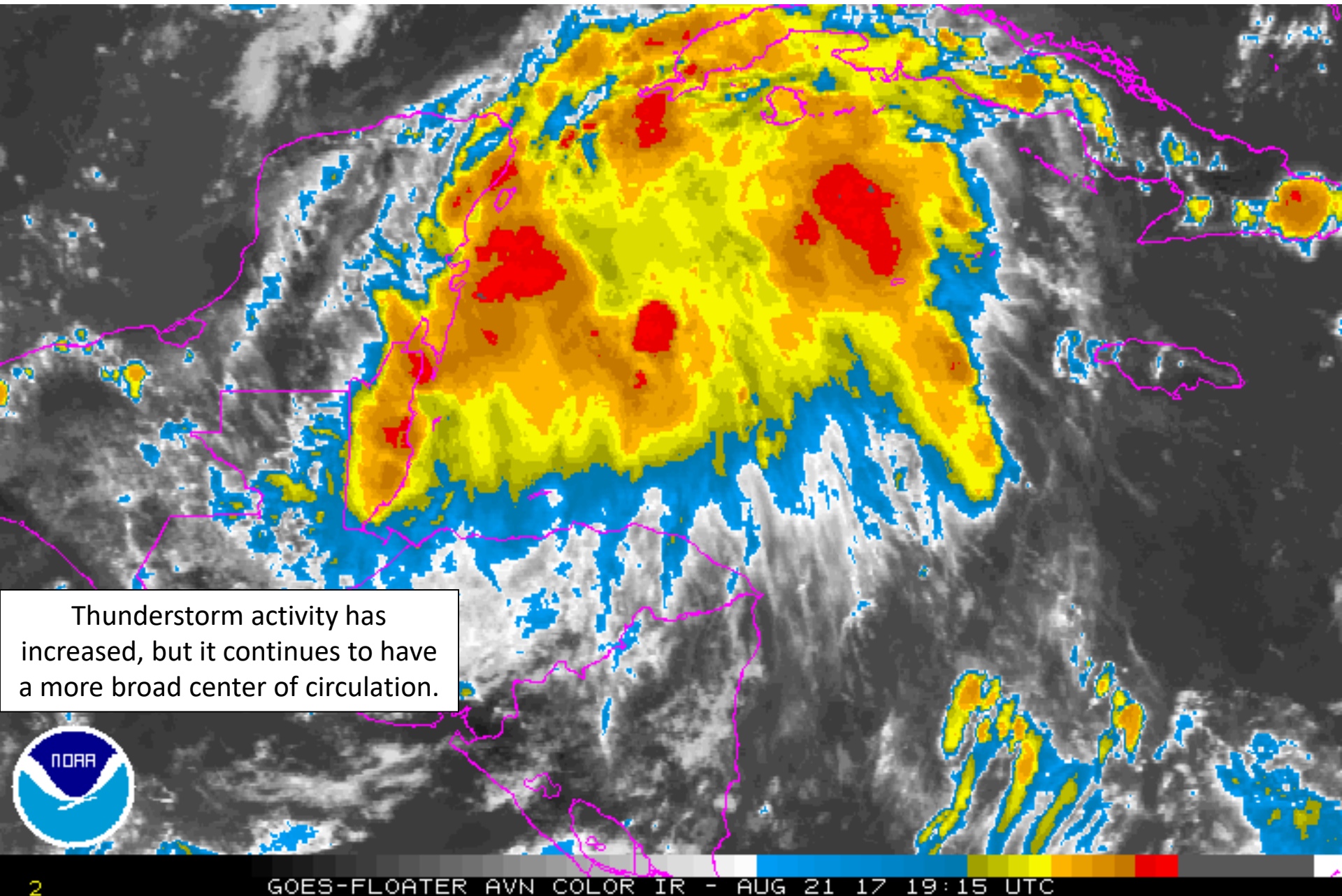


Current Wind Shear (shaded) and Shear Tendency (lines)



1 GOES-EAST 24 HOUR WIND SHEAR TENDENCY PRODUCT 1800 UTC 21AUG17 UW-CIMSS McIDAS

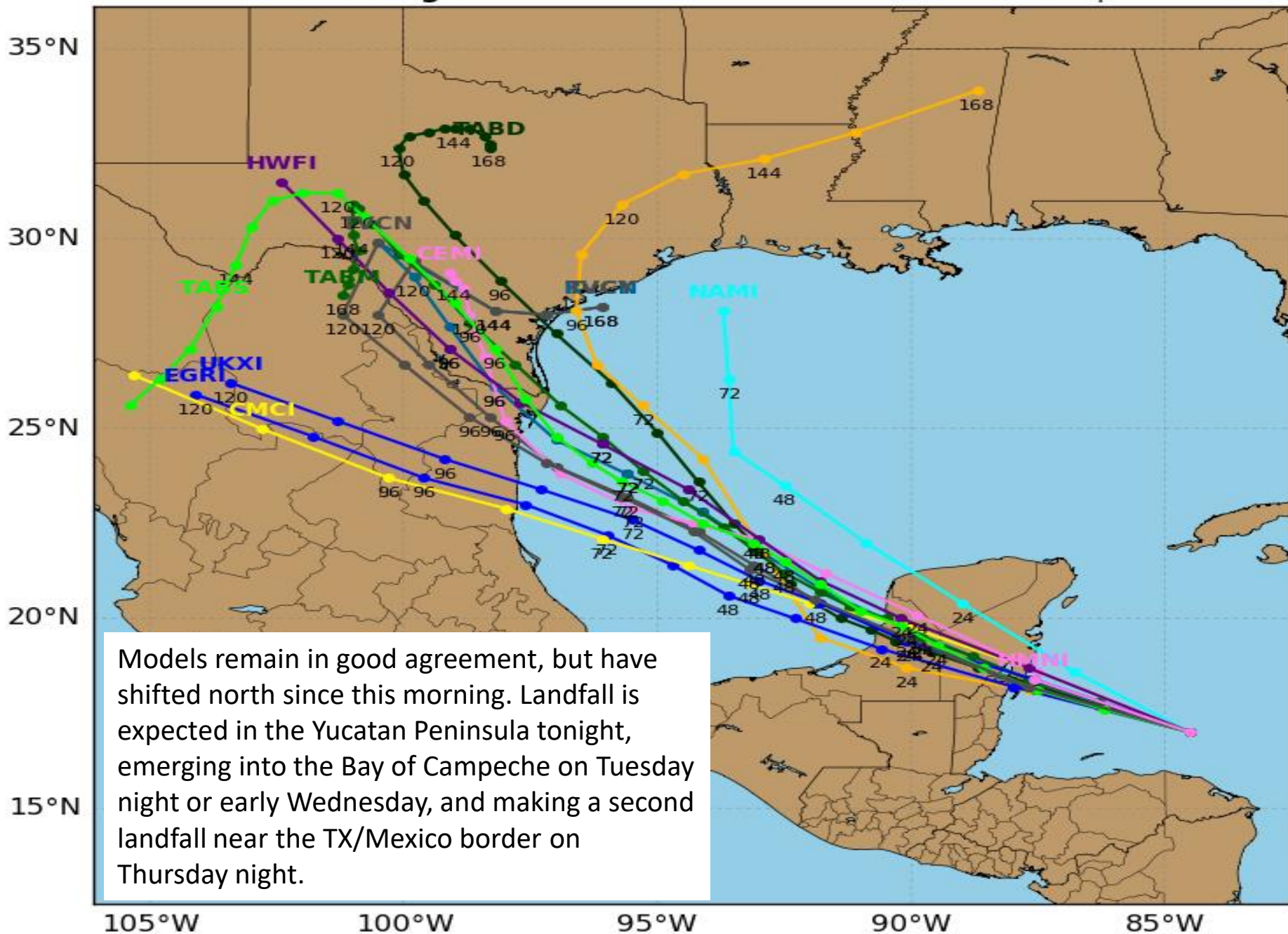
Remnants of Harvey (Area 1) Satellite



Invest 09L Model Track Guidance

Initialized at 18z Aug 21 2017

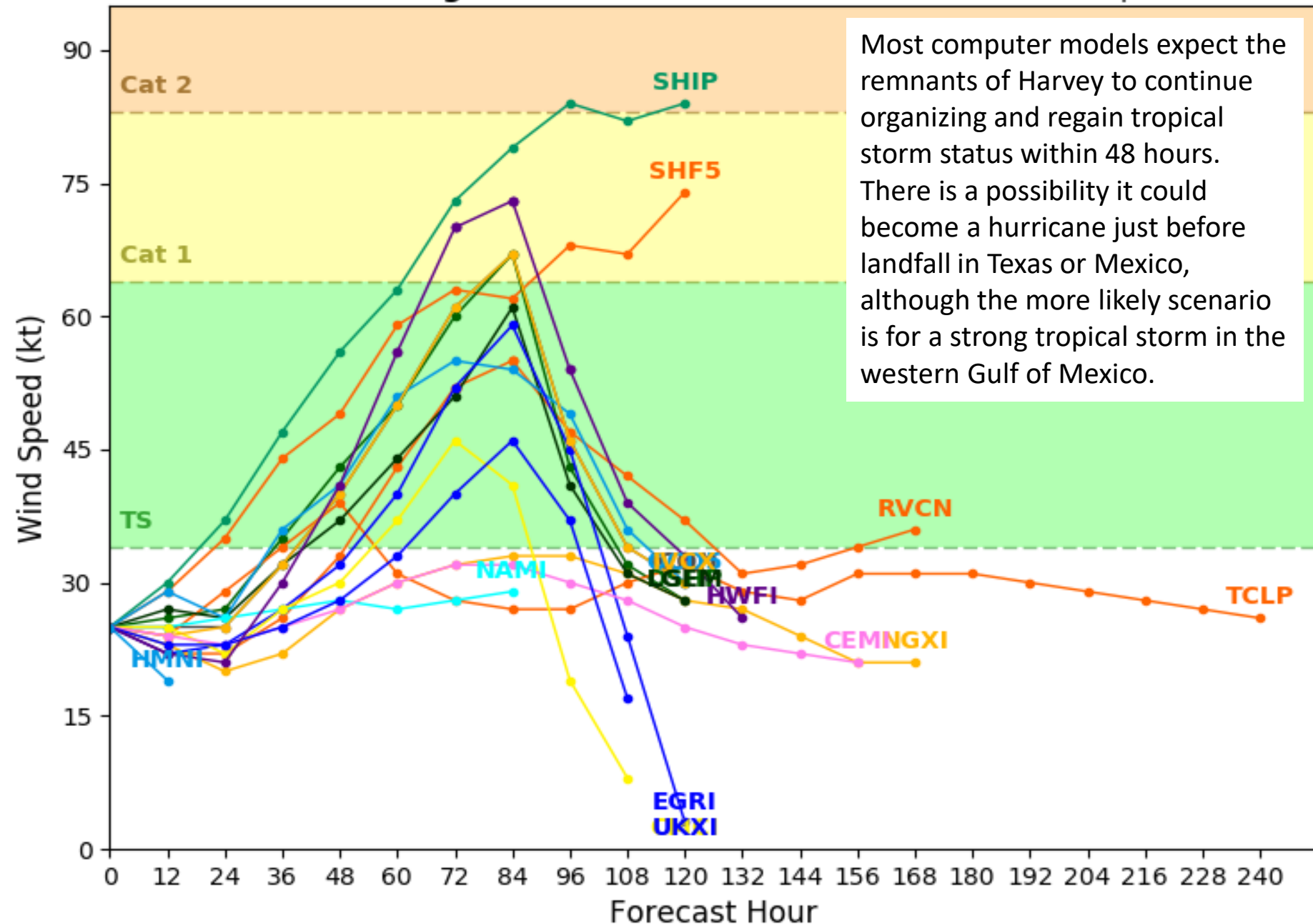
Levi Cowan - tropicaltidbits.com



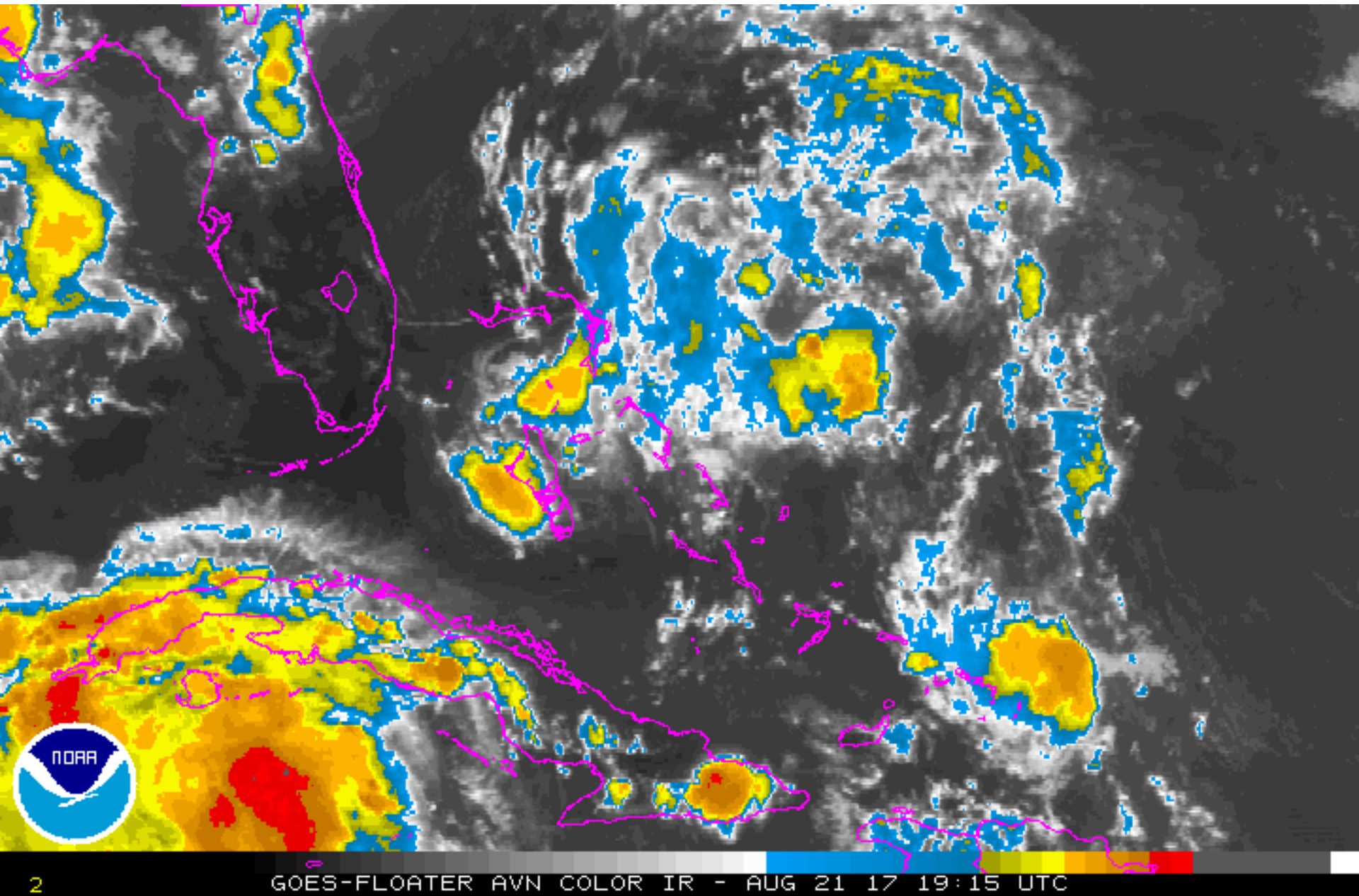
Invest 09L Model Intensity Guidance

Initialized at 18z Aug 21 2017

Levi Cowan - tropicaltidbits.com

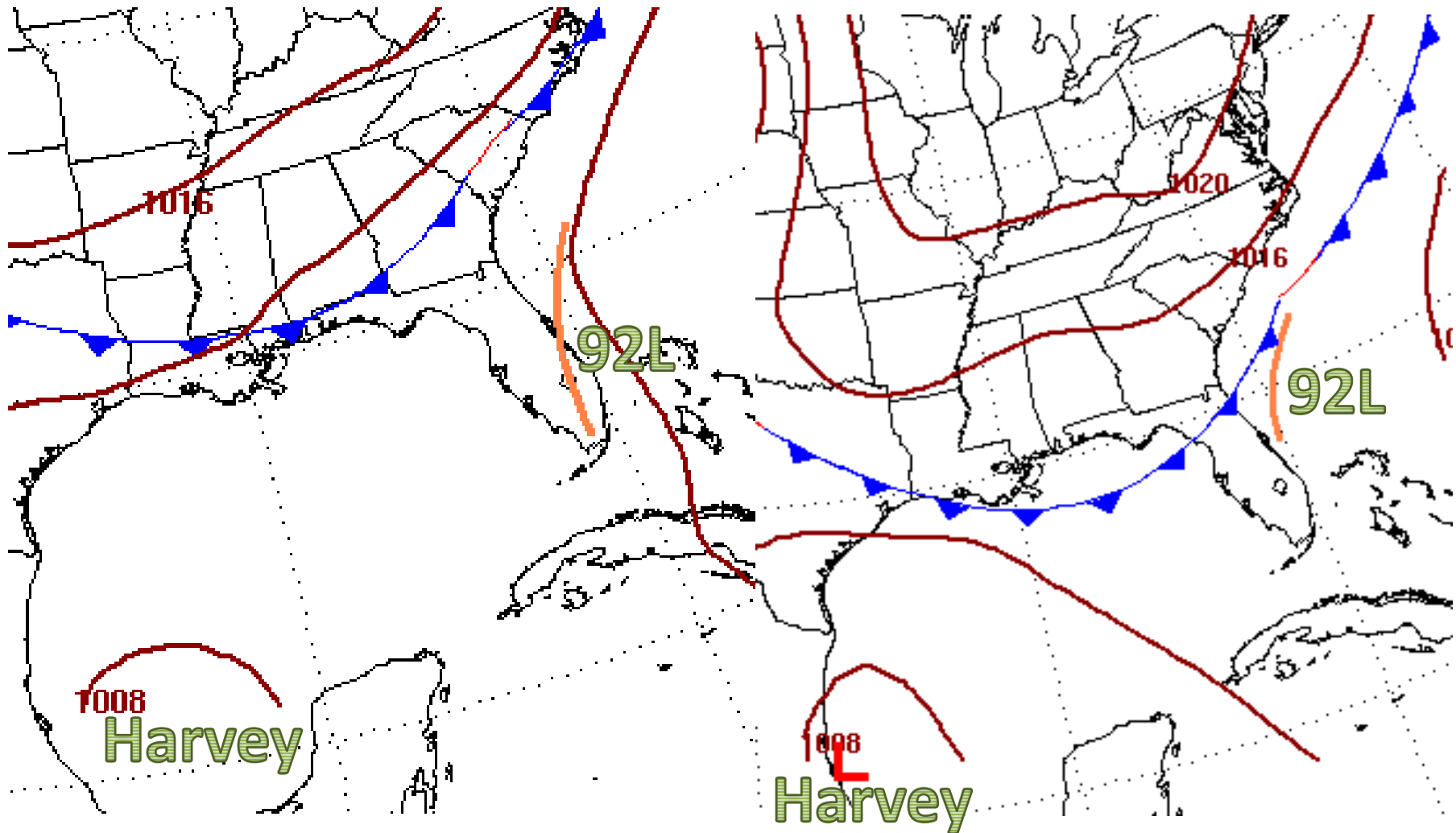


92L (Area 2) Satellite

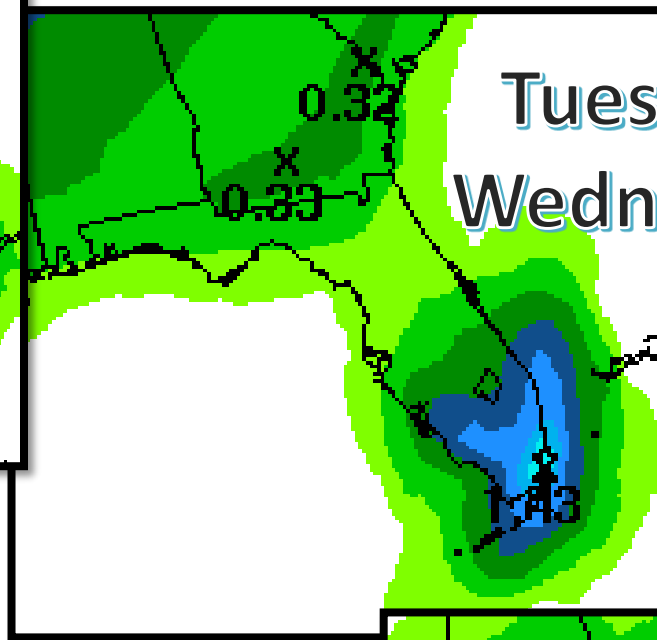
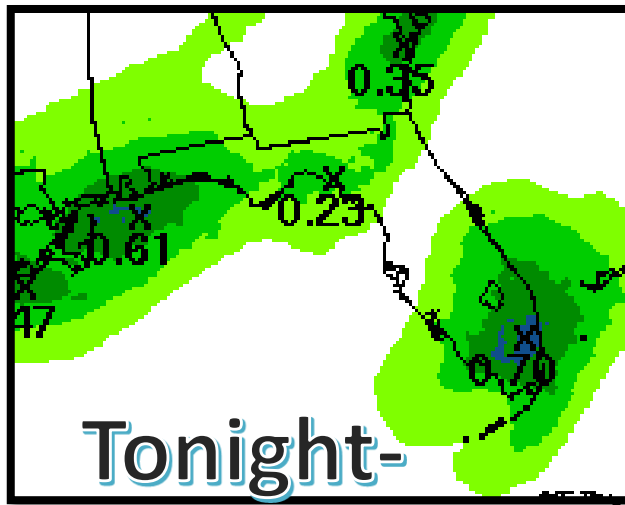
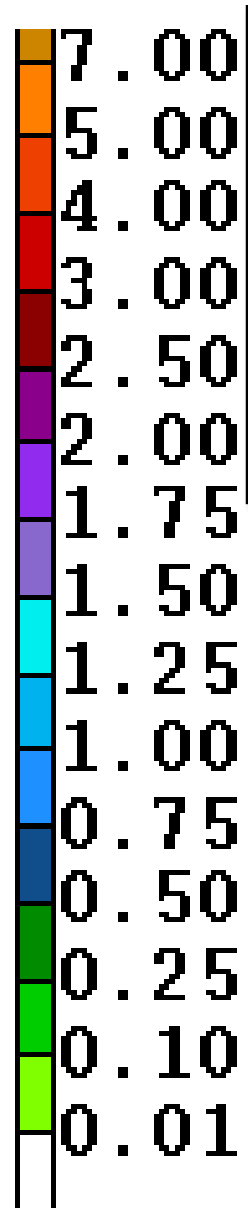


Forecast Weather Maps

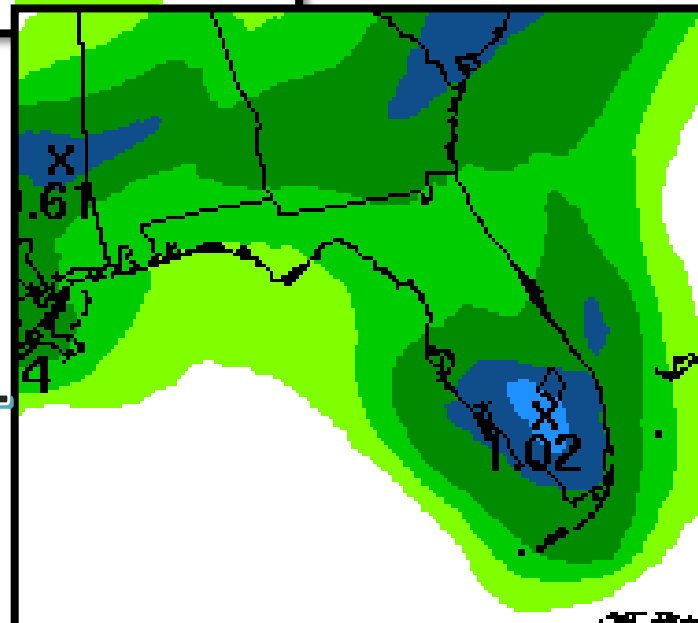
Thursday (8/24) & Friday (8/25)



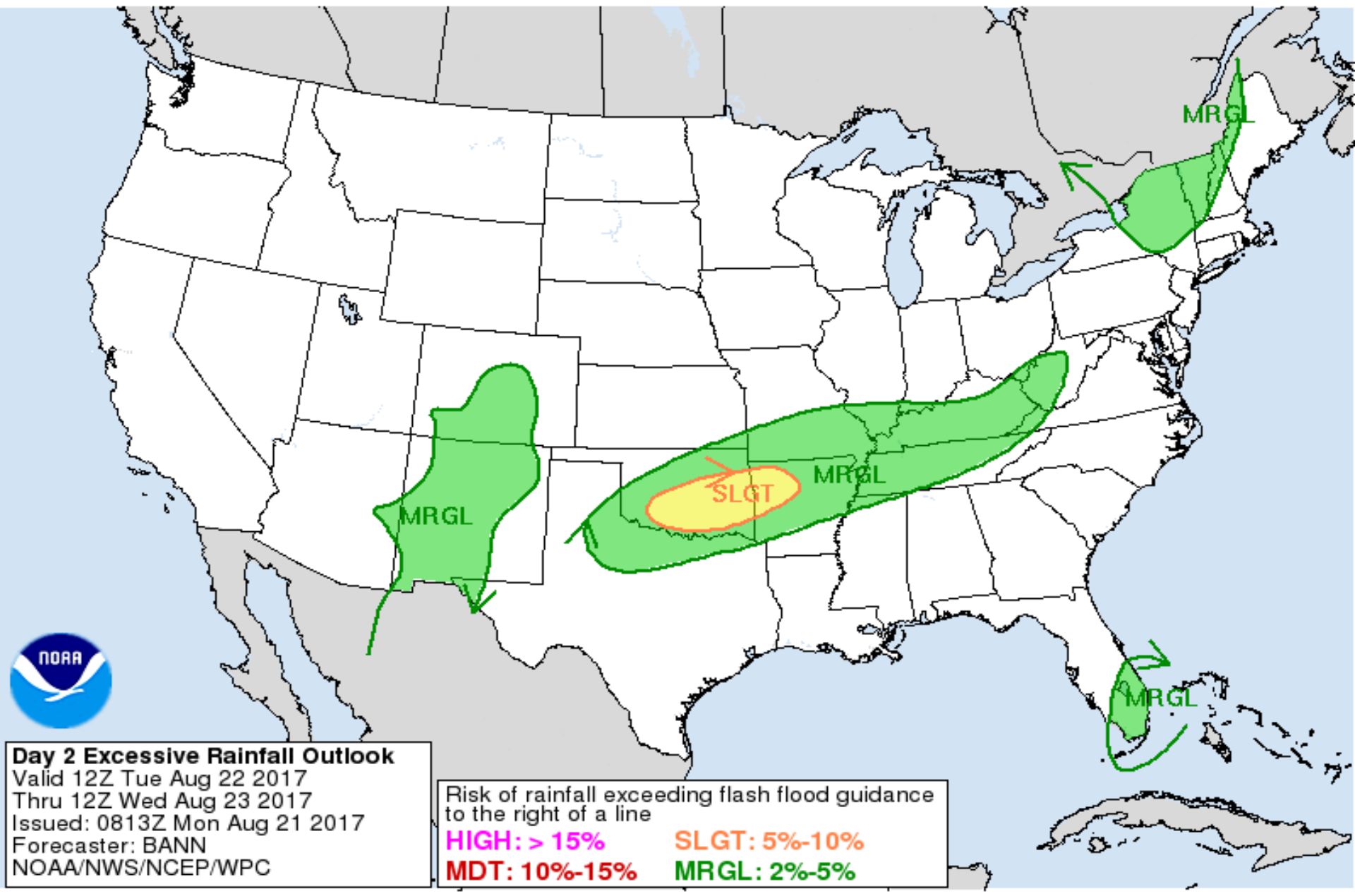
Forecast Daily Rainfall



Wednesday night-Thursday night



Marginal risk for flash flooding Tuesday

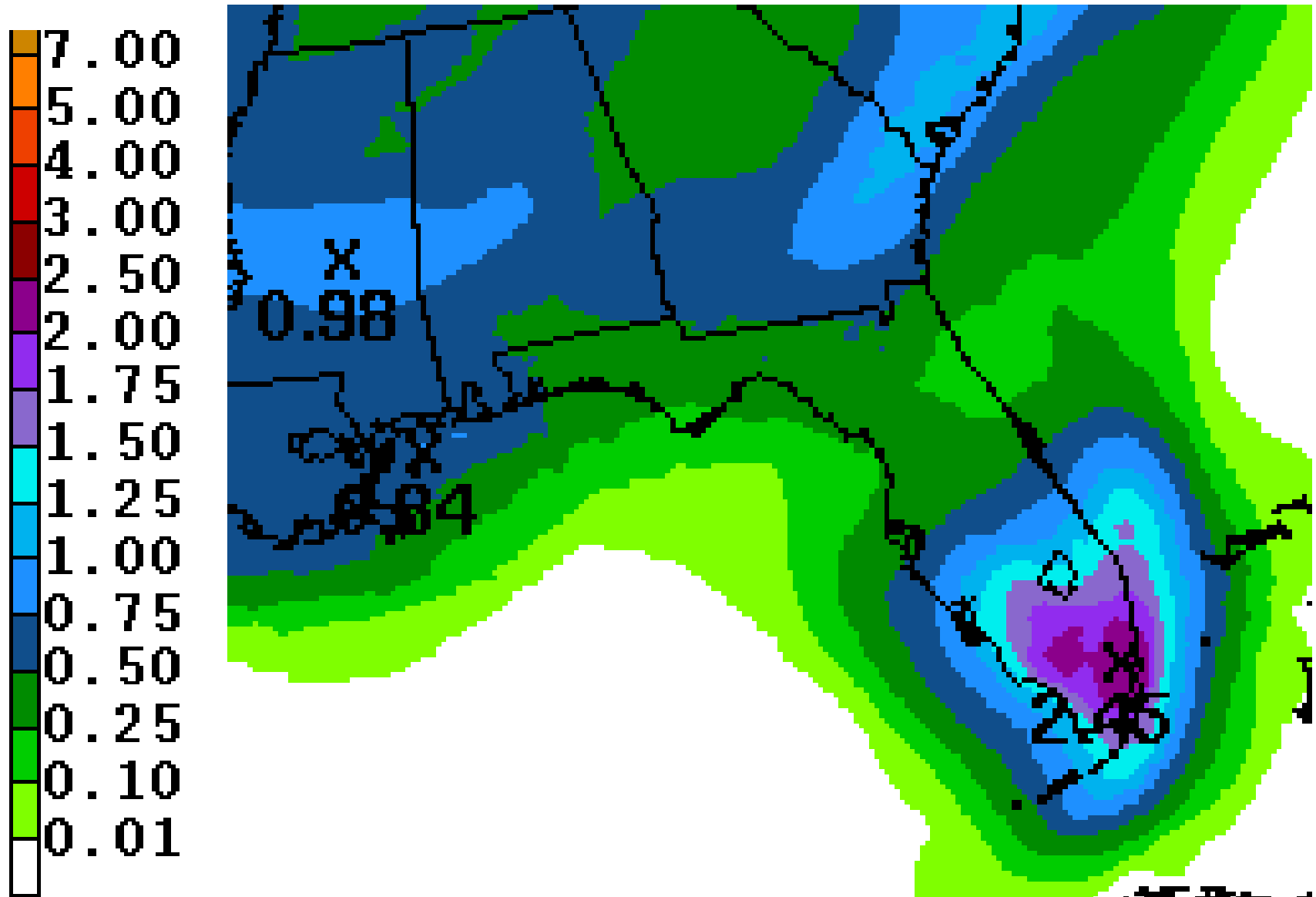


Day 2 Excessive Rainfall Outlook
Valid 12Z Tue Aug 22 2017
Thru 12Z Wed Aug 23 2017
Issued: 0813Z Mon Aug 21 2017
Forecaster: BANN
NOAA/NWS/NCEP/WPC

Risk of rainfall exceeding flash flood guidance
to the right of a line

HIGH: > 15%	SLGT: 5%-10%
MDT: 10%-15%	MRGL: 2%-5%

3 Day Cumulative Rainfall (does not account for isolated higher totals)



Summary

- The remnants of Harvey are currently located in the western Caribbean, about 250 miles east of Belize City, Belize.
 - While the system is producing numerous showers and thunderstorms, it remains disorganized and lacks a well defined center. The hurricane hunter mission for today was cancelled.
 - Redevelopment of this system before it moves into Belize and the Yucatan Peninsula early tomorrow appears less likely, but once the system re-emerges into the Bay of Campeche and southwest Gulf of Mexico tomorrow night, redevelopment appears much more likely as conditions will be favorable.
 - As a result, the National Hurricane Center gives it a 70% (high) chance of redevelopment during the next 48 hours, and a 90% (high) chance during the next five days.
 - This system is forecast to maintain a northwesterly track, moving it across the Yucatan Peninsula tonight, into the southwestern Gulf of Mexico tomorrow and then a second landfall in northeastern Mexico or southeastern Texas at the end of the week.
-
- Near the Bahamas, Invest Area 92L continues to produce disorganized showers and thunderstorms.
 - Wind shear and dry air continues to hinder the system getting organized. Environmental conditions are expected to be only marginally conducive for development over the next 24-48 hours.
 - The National Hurricane Center is giving 92L a 20% (low) chance of development over the next 48 hours, but a 40% (medium) chance of development over the next five days.
 - The system will continue to track west during the next 24-48 hours into or near South Florida. After this time, a frontal boundary to the north is likely to interact with the system and pull it northeast away from Florida.

- The hurricane hunter reconnaissance mission to fly into the system this afternoon was cancelled. If necessary, a flight is scheduled for tomorrow morning.
- The next name on the 2017 Atlantic Storm list is Irma.
- The tropical wave over the central Atlantic is no longer being monitored for development by the Hurricane Center.

Florida Outlook:

- The remnants of Harvey do not pose a direct threat to Florida over the next five days.
- However, if it strengthens in the southwest Gulf of Mexico, an increased risk for rip currents along the Florida Gulf Coast is likely later this week into the weekend.
- Invest 92L will approach South Florida early tomorrow and remain in the area on Wednesday, but it will likely be only a tropical wave or depression. It should continue to be monitored closely.
- Regardless of development, locally heavy rainfall for South Florida tomorrow and Wednesday is expected.
- Widespread rainfall amounts of 2-4" are likely in South Florida, with locally higher amounts possible.
- There is a marginal risk (level 1 of 5) for flash flooding in Southeast Florida and the Treasure Coast tomorrow.

Another briefing packet will be issued Tuesday morning. For the latest information on the tropics, please visit the National Hurricane Center website at www.hurricanes.gov



TROPICAL UPDATE

Created by:

Amy Godsey, Chief State Meteorologist
amy.godsey@em.myflorida.com

State Meteorological Support Unit
Florida Division of Emergency
Management

Users wishing to subscribe (approval pending) to this distribution list, register at https://public.govdelivery.com/accounts/FLDEM/subscriber/new?topic_id=SERT_Met_Tropics.

Other reports available for subscription are available at <https://public.govdelivery.com/accounts/FLDEM/subscriber/new?preferences=true>