



TROPICAL UPDATE

9 AM EDT

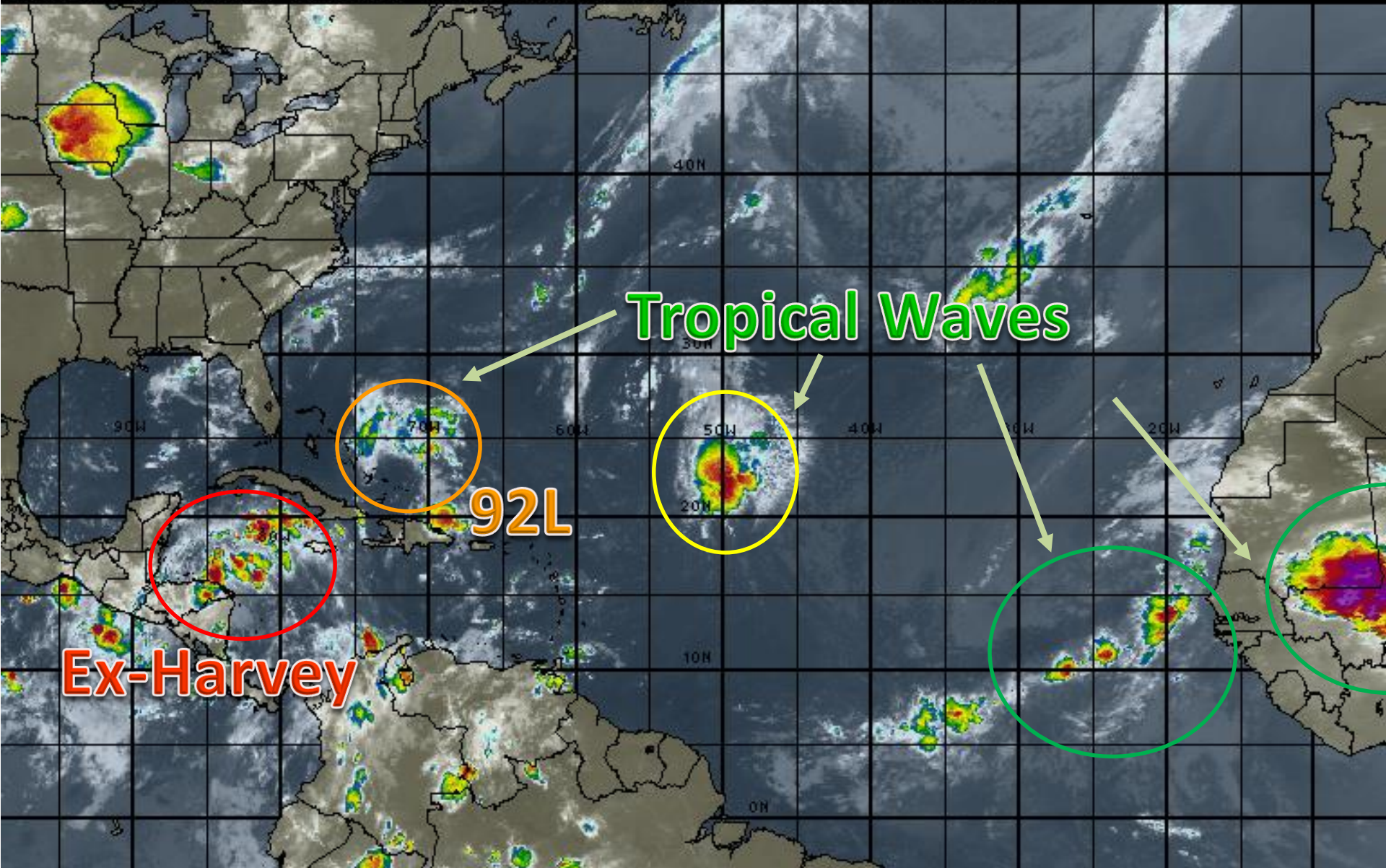
Monday, August 21, 2017

**Remnants of Harvey (80%) &
Invest 92L (40%)**

This update is intended for government and emergency response officials, and is provided for informational and situational awareness purposes only. Forecast conditions are subject to change based on a variety of environmental factors. For additional information, or for any life safety concerns with an active weather event please contact your County Emergency Management or Public Safety Office, local National Weather Service forecast office or visit the National Hurricane Center website at www.nhc.noaa.gov.

Atlantic Basin Satellite Image

09:00 21-AUG-2017 GMT Copyright © 1998-2016 MSI Corporation <http://www.usi.com>





Five-Day Graphical Tropical Weather Outlook

National Hurricane Center Miami, Florida



www.hurricanes.gov

All Disturbances

1. Formation chance through 48 hours...medium...50 percent.
Formation chance through 5 days...high...80 percent.
2. Formation chance through 48 hours...low...10 percent.
Formation chance through 5 days...medium...40 percent.
3. Formation chance through 48 hours...low...near 0 percent.
Formation chance through 5 days...low...near 0 percent.

8:00 am EDT
Mon Aug 21 2017

100°W 90°W 80°W 70°W 60°W 50°W 40°W 30°W 20°W

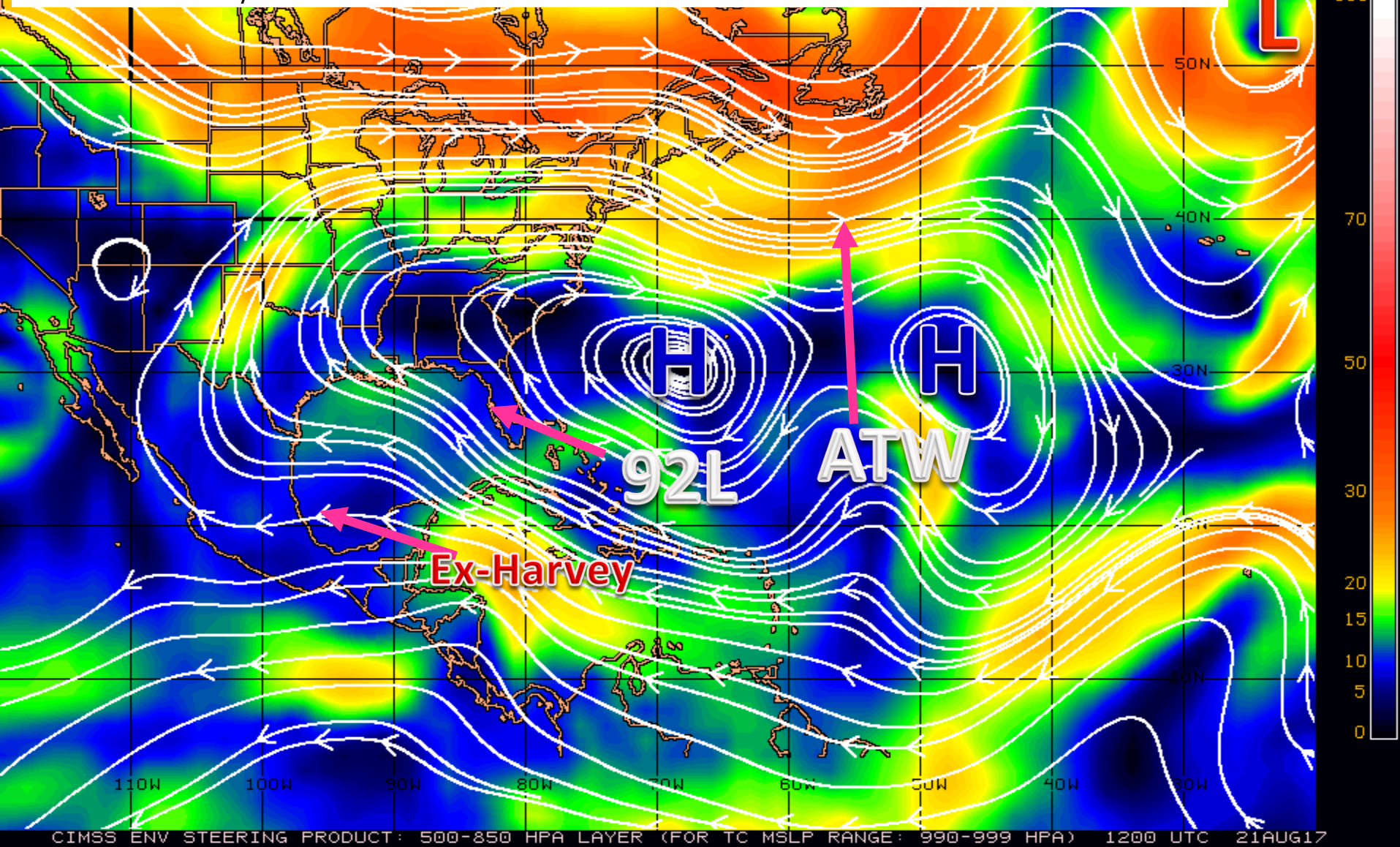
Current Disturbances and Five-Day Cyclone Formation Chance: ✕ < 40% ✕ 40-60% ✕ > 60%

Tropical or Sub-Tropical Cyclone: ○ Depression ○ Storm ○ Hurricane

⊗ Post-Tropical Cyclone ✕ Remnants

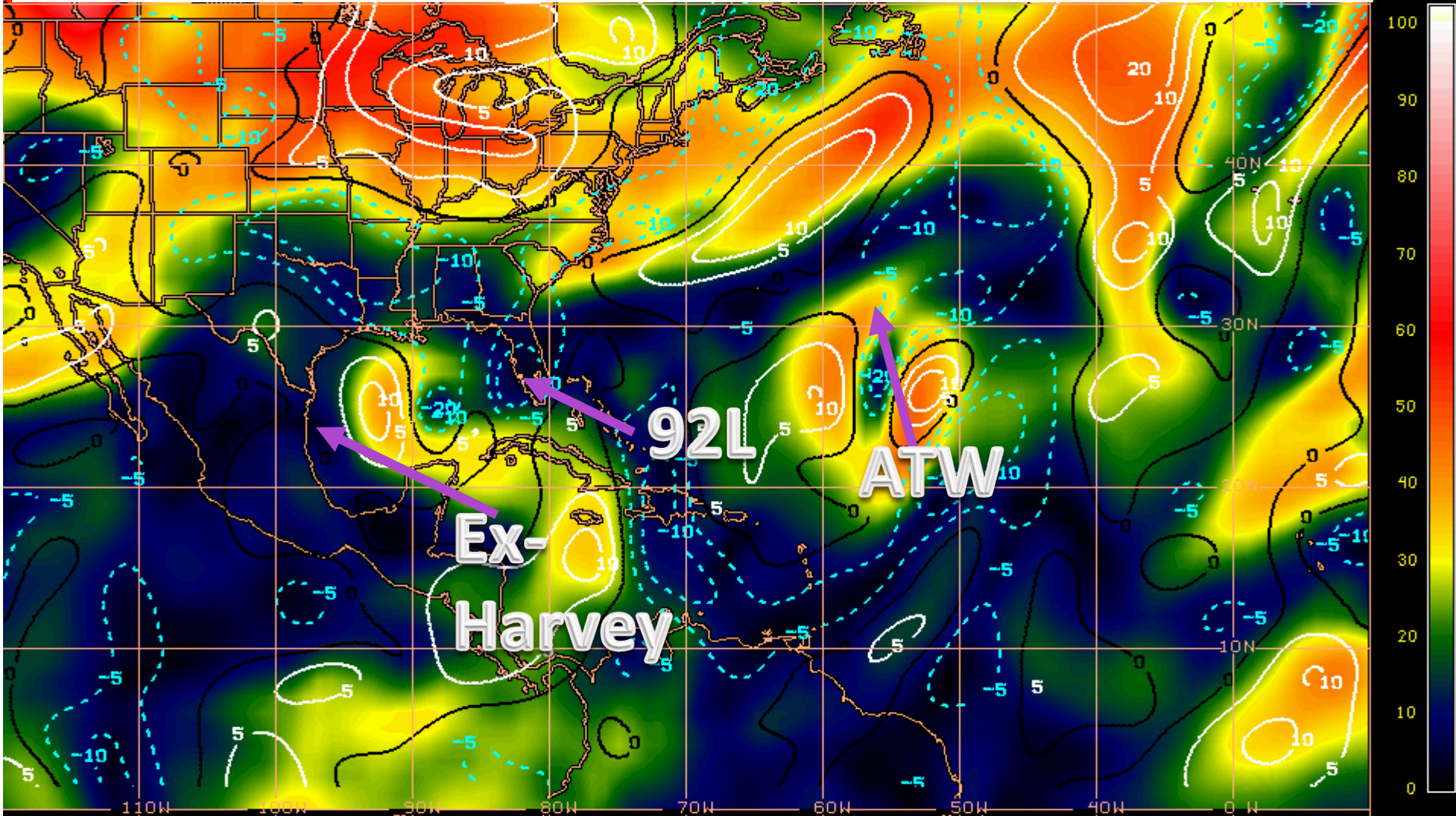
Steering Currents

The remnants of Harvey and 92L will be generally steered by high in the western Atlantic. However, a frontal system moving towards the U.S. East Coast will weaken high pressure and may allow for a more northward movement of both systems later this week.



Current Wind Shear (shaded) and Shear Tendency (lines)

Wind shear will likely inhibit development of all 3 systems. Conditions may improve if the remnants of Harvey are able to survive the next few days and reach the western Gulf of Mexico.



Shear Tendency (KTS) Over Past 24 Hours: Increasing — Decreasing ----

GOES-EAST 24 HOUR WIND SHEAR TENDENCY PRODUCT

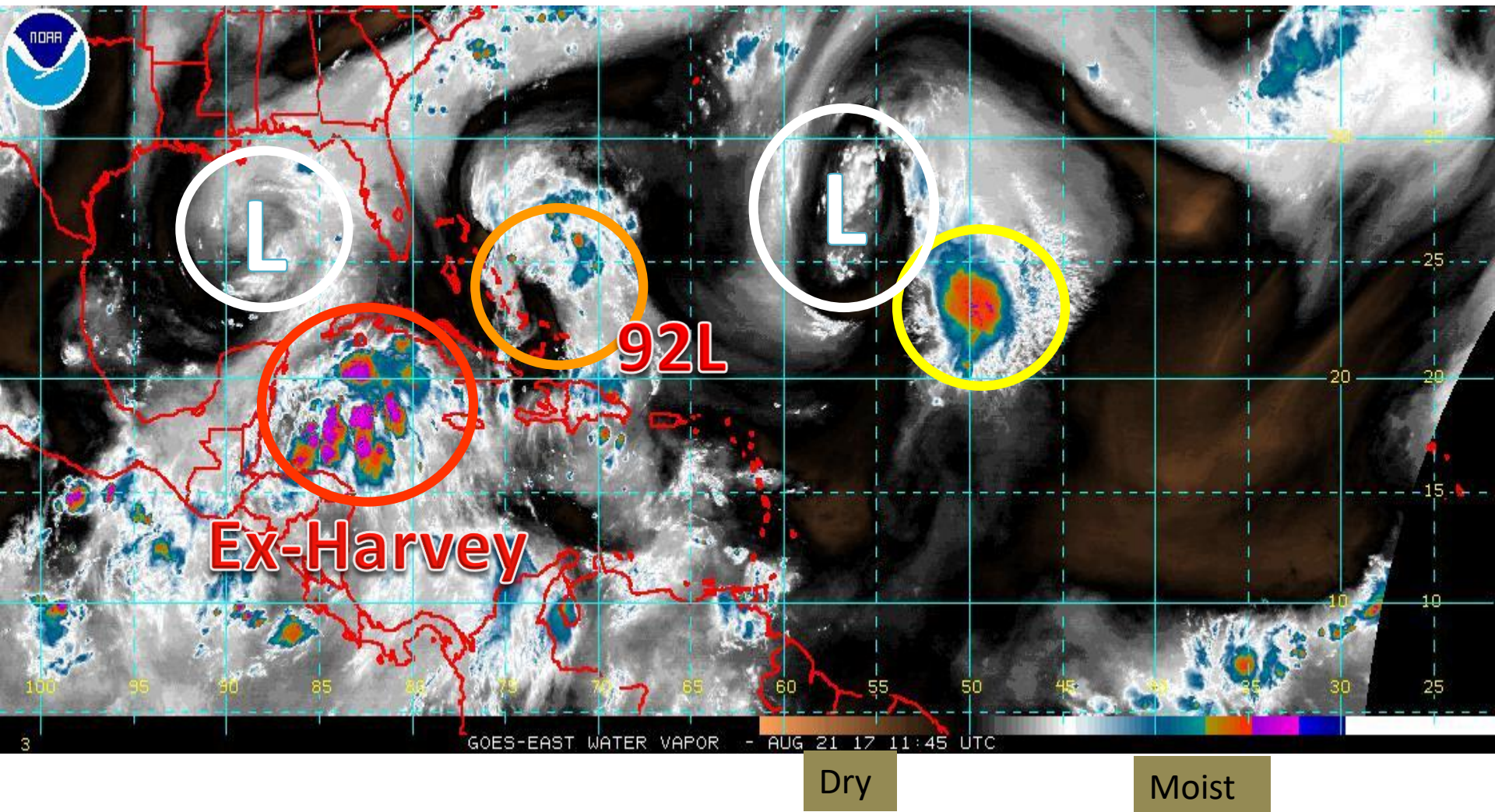
1200 UTC

21AUG12

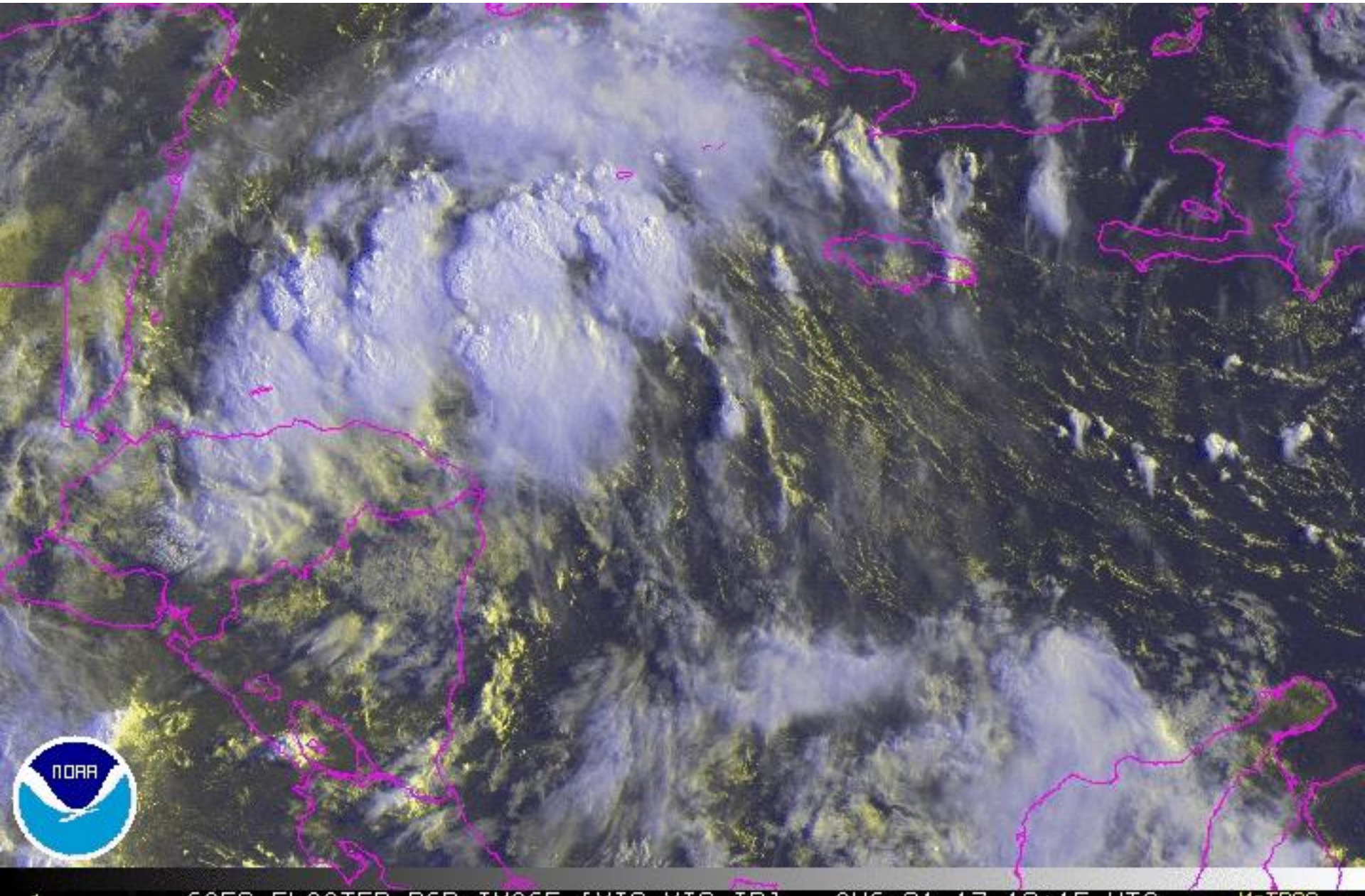
UW-CIMSS

McIDAS

Nearby upper level low pressure areas that are non-tropical will also limit development. These areas typical increase wind shear and push drier air towards the tropical wave.



Remnants of Harvey (Area 1) Satellite

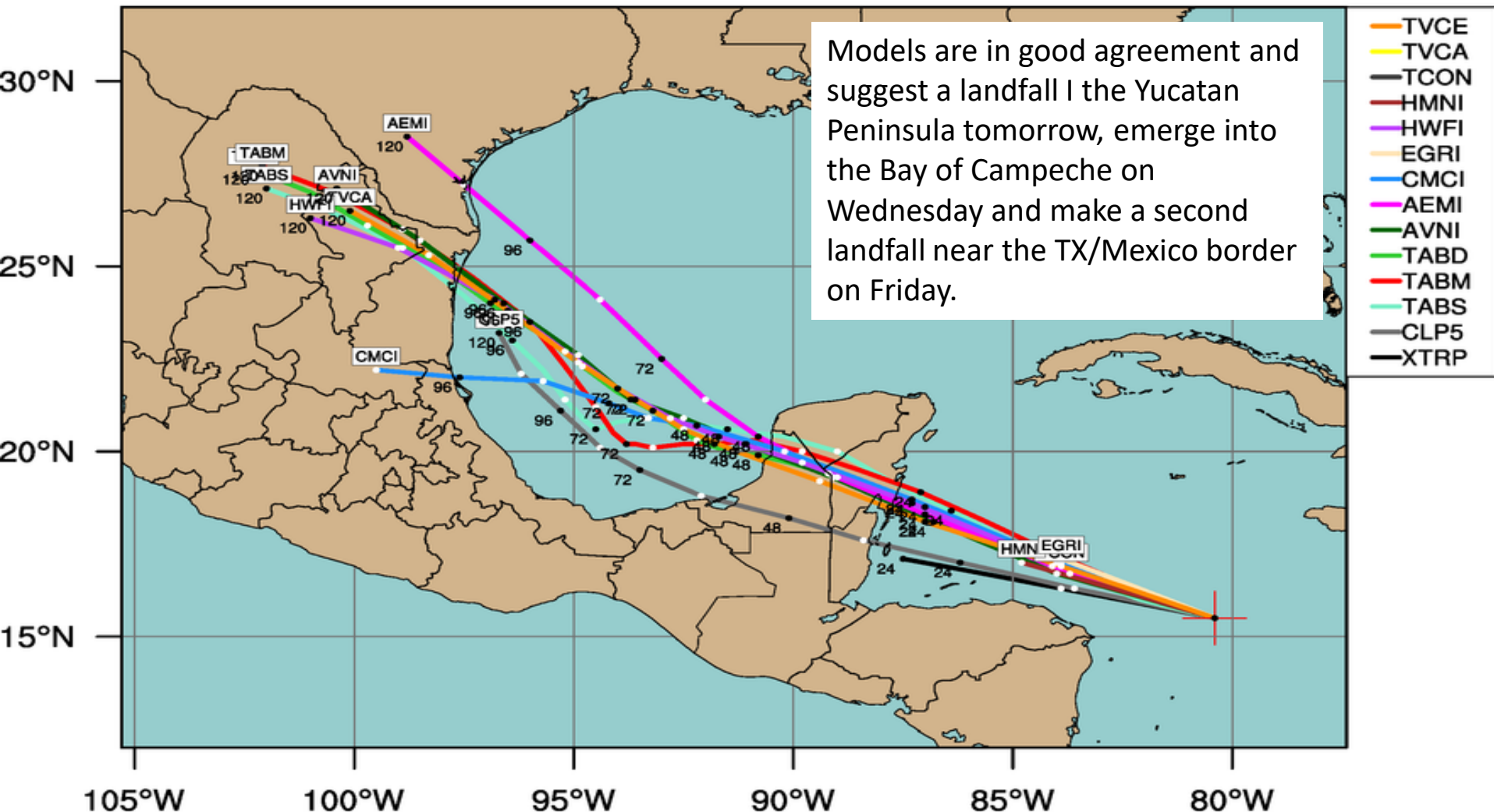


TROPICAL WAVE HARVEY (AL09)

Early-cycle track guidance initialized at 0600 UTC, 21 August 2017

Current Intensity: 25 kt

Current Basin: North Atlantic



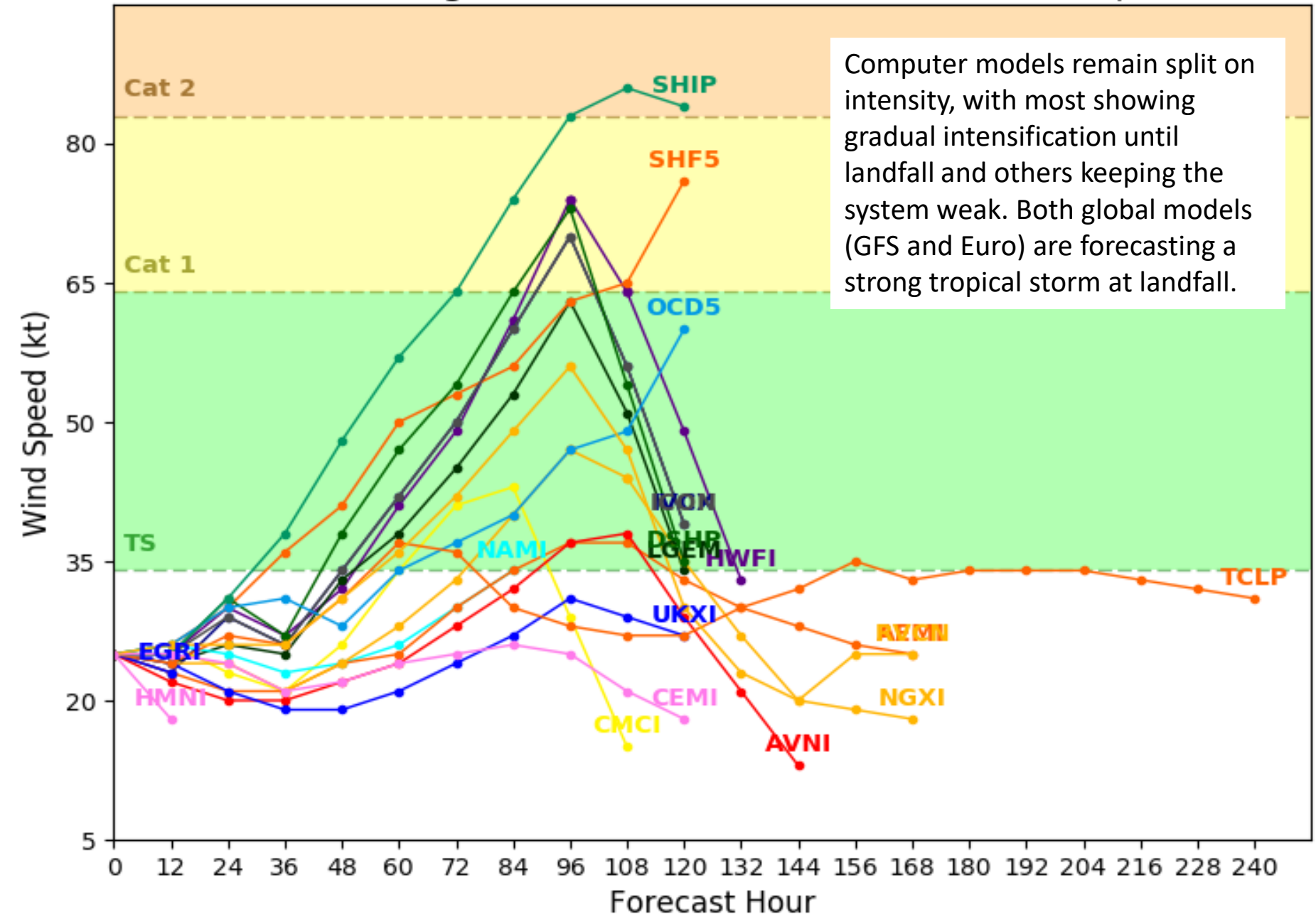
By using this plot, the user agrees to the UCAR Terms of Use
which can be accessed at: <http://www2.ucar.edu/terms-of-use>

Plot generated at 0921 UTC 21 August 2017

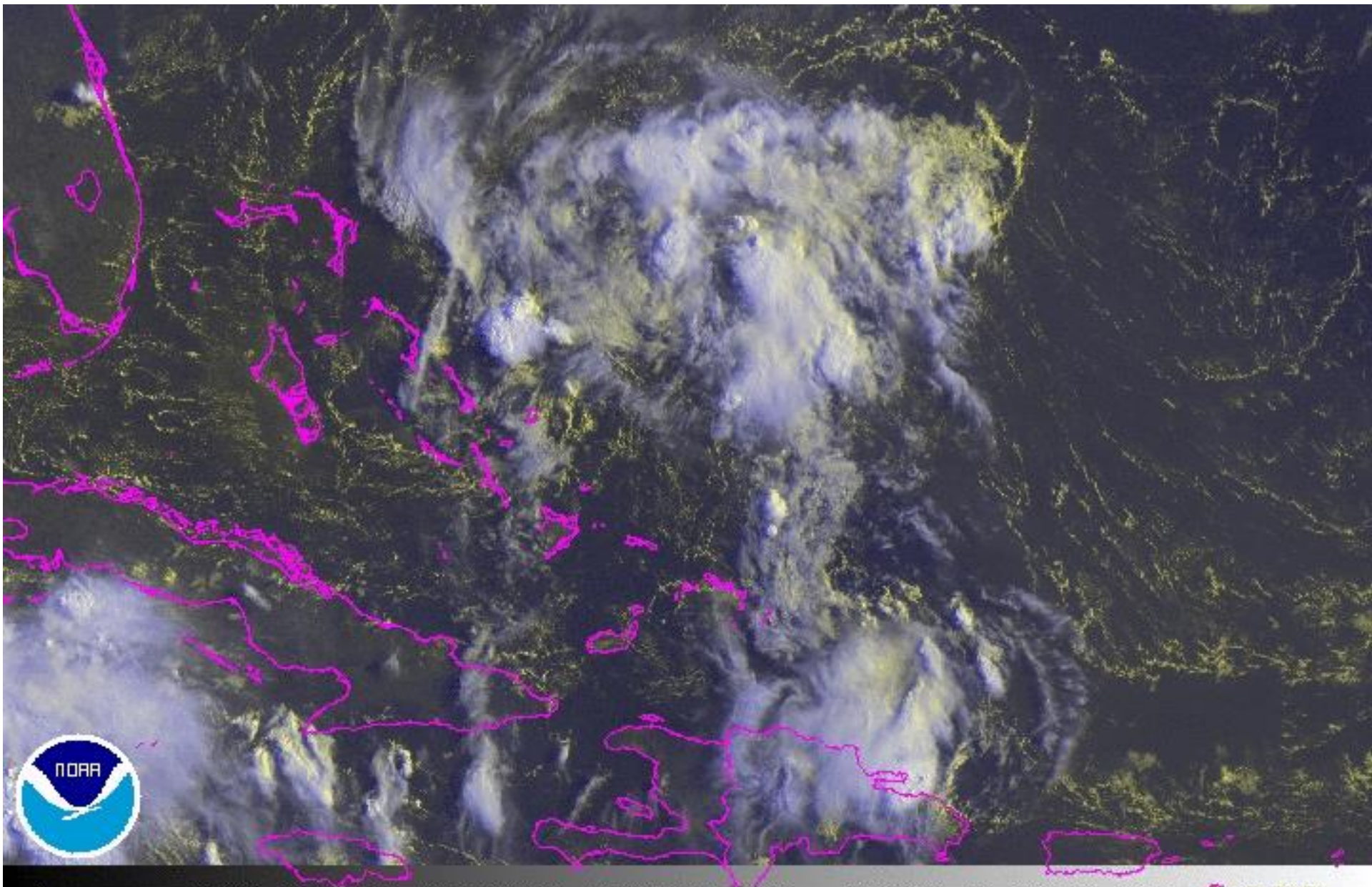
Invest 09L Model Intensity Guidance

Initialized at 06z Aug 21 2017

Levi Cowan - tropicaltidbits.com

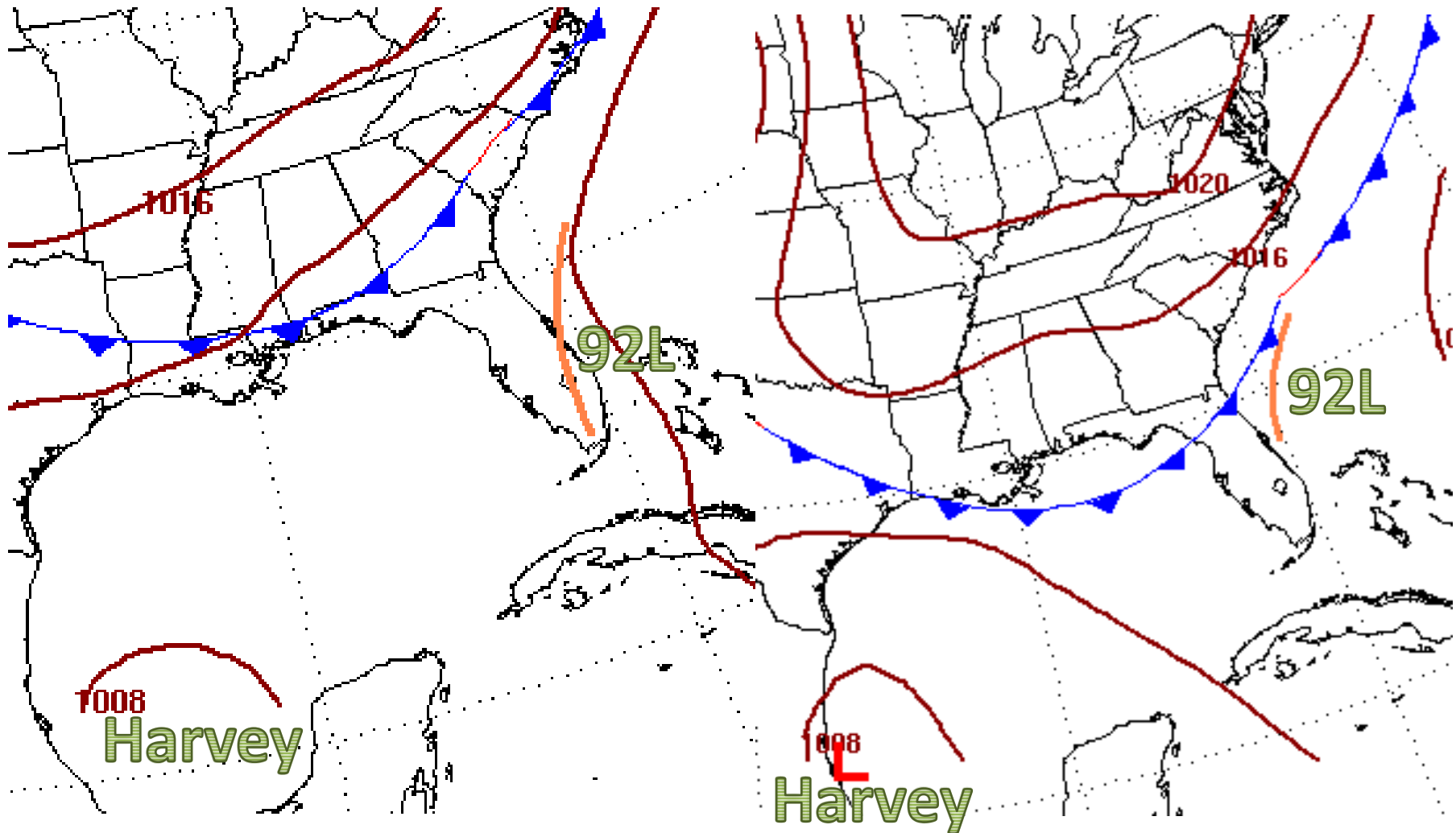


92L (Area 2) Satellite



Forecast Weather Maps

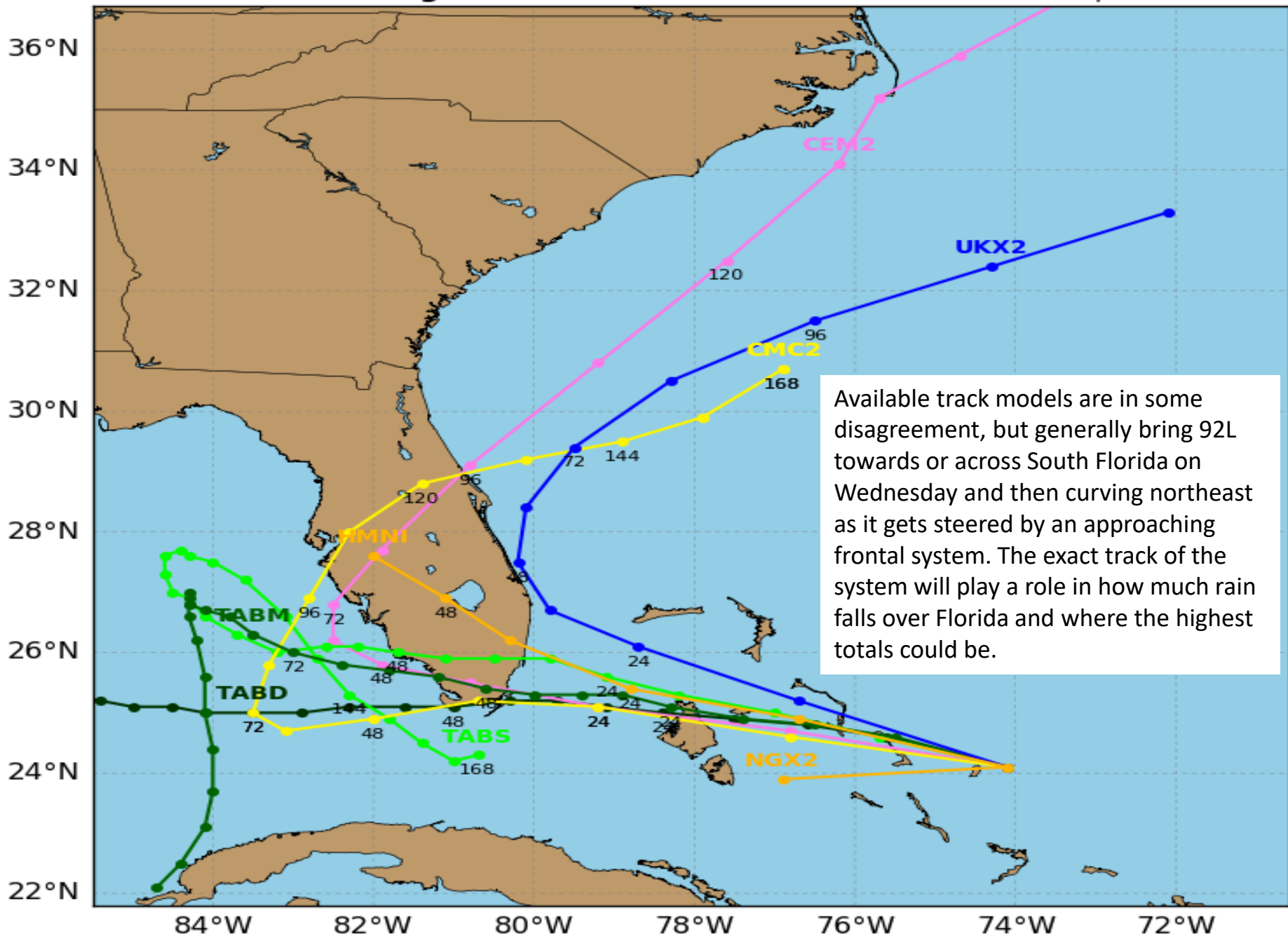
Thursday (8/24) & Friday (8/25)



Invest 92L Model Track Guidance

Initialized at 12z Aug 21 2017

Levi Cowan - tropicaltidbits.com



Invest 92L Model Intensity Guidance

Initialized at 12z Aug 21 2017

Levi Cowan - tropicaltidbits.com

Computer models keep this system weak since atmospheric conditions are predicted to be unfavorable. **Note: The TCLP, OCD5 SHF5 & SHIP models are statistical/historical in nature and do not take into account the forecast the state of the atmosphere.**

Wind Speed (kt)

75

65

55

45

35

25

15

5

Forecast Hour

0 12 24 36 48 60 72 84 96 108 120 132 144 156 168

TS

NGX2

HMNI

UKX2

OCD5

TCLP

CMC2

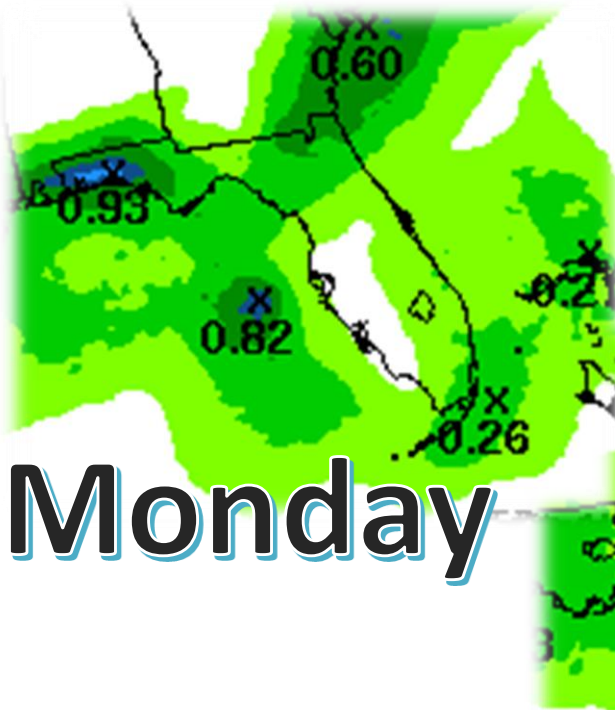
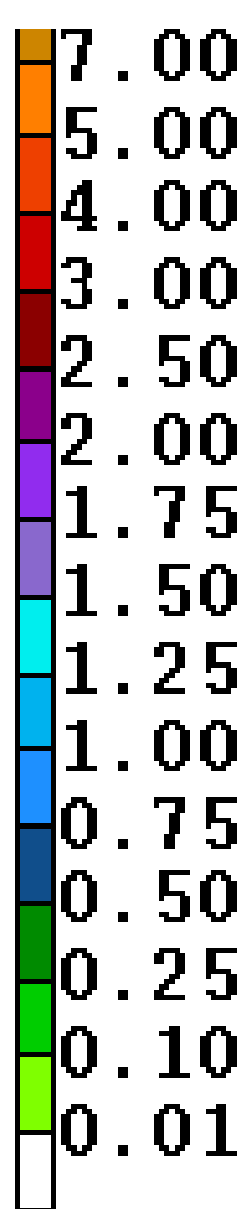
CEM2

DSBN

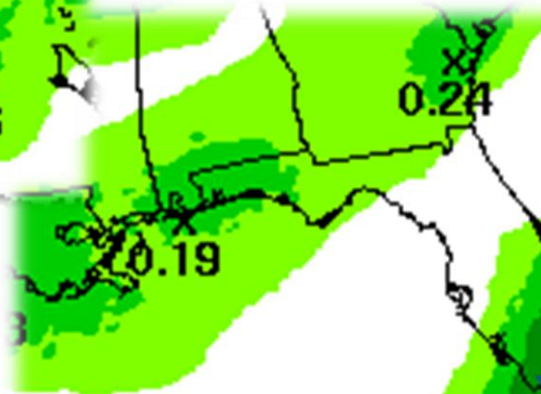
SHIP

SHF5

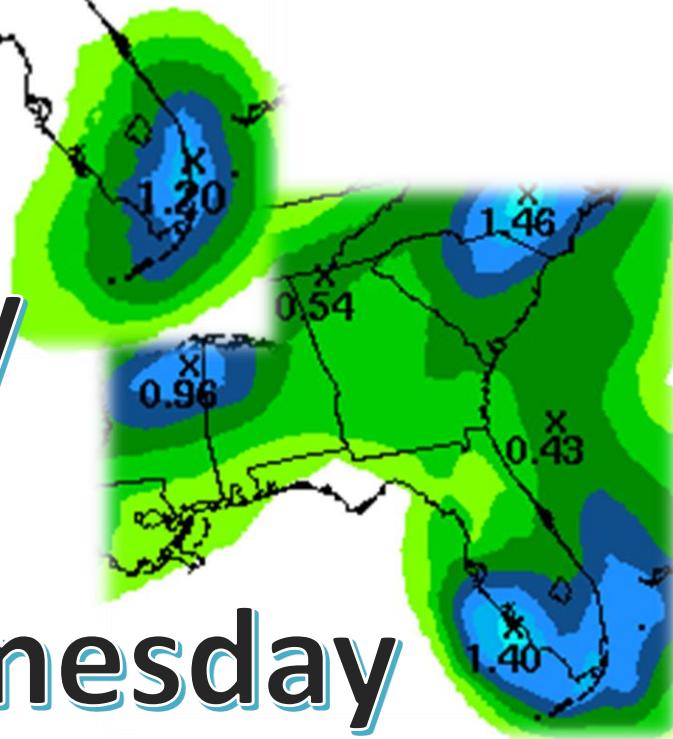
Forecast Daily Rainfall



Monday

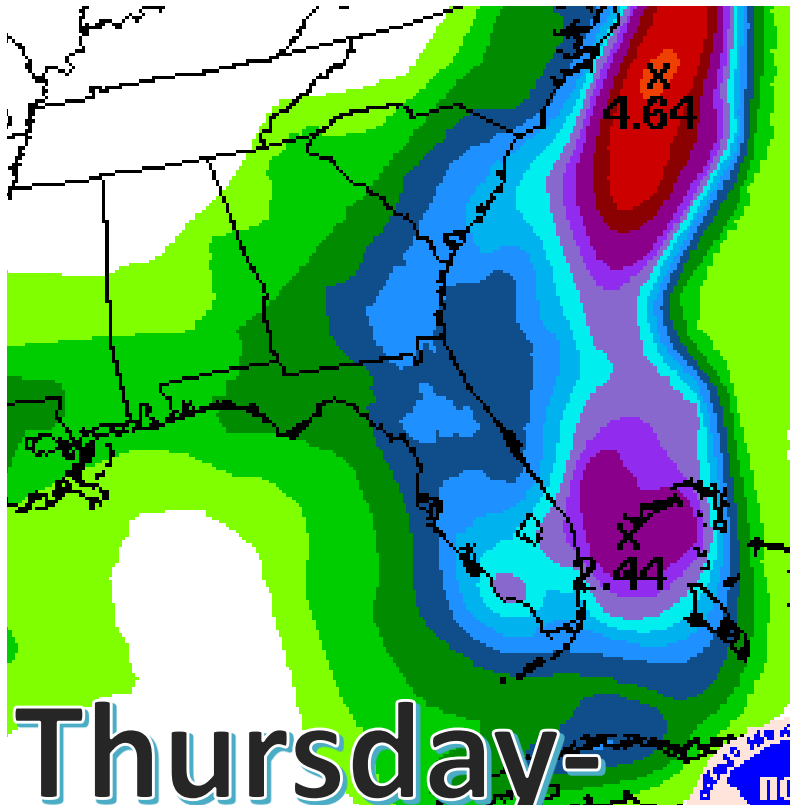
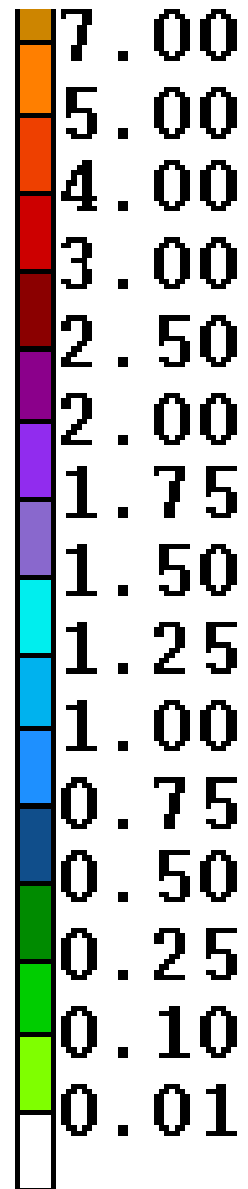


Tuesday

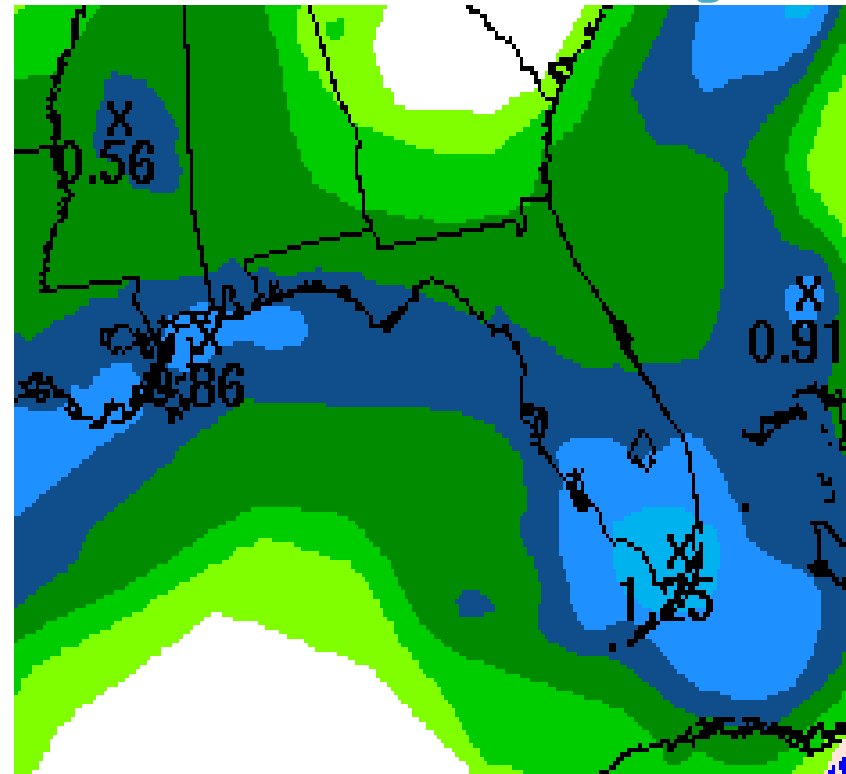


Wednesday

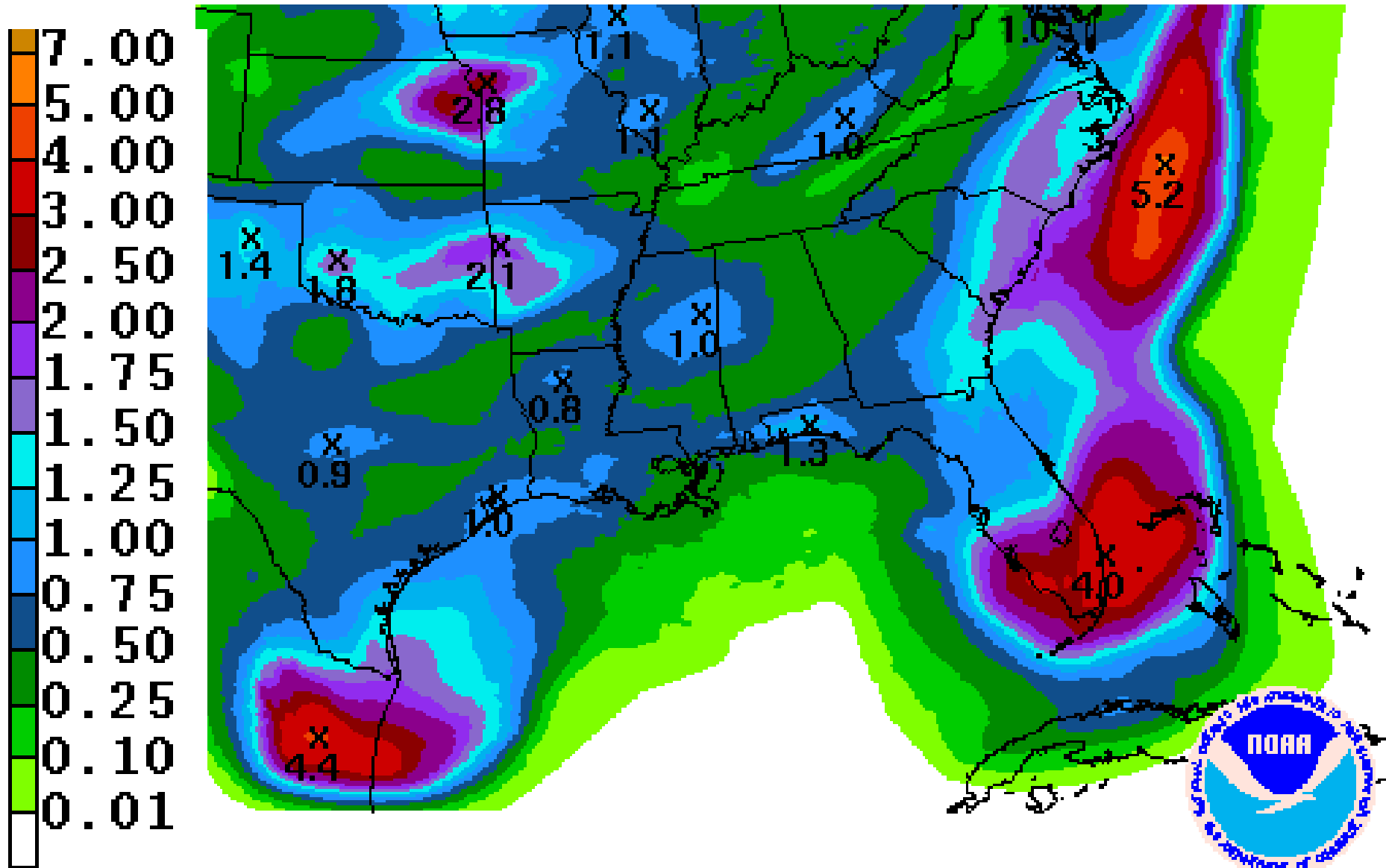
Forecast Rainfall



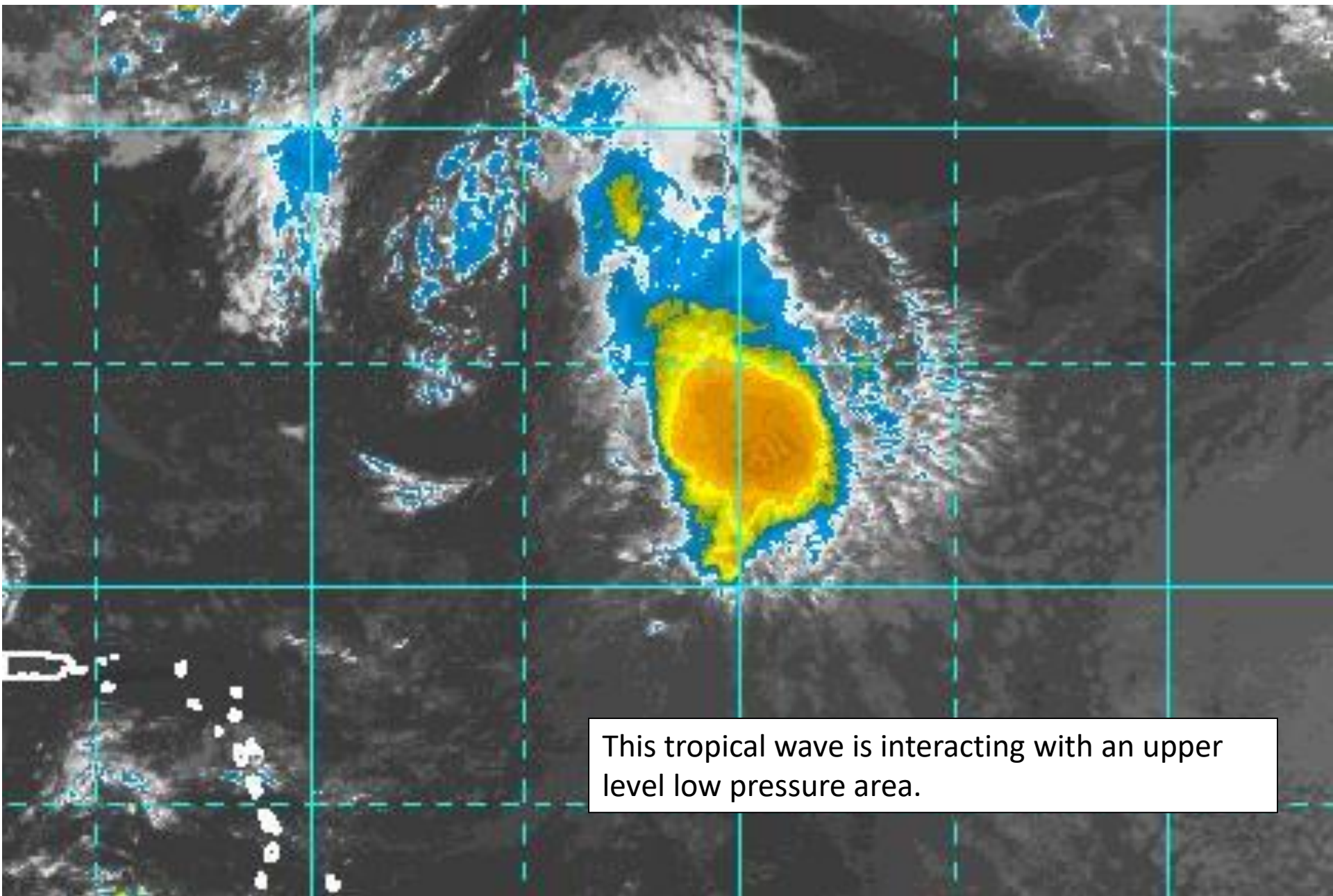
Saturday-
Sunday



5 Day Cumulative Rainfall (does not account for isolated higher totals)



Atlantic Tropical Wave (Area 3) Satellite



This tropical wave is interacting with an upper level low pressure area.

Summary

- The remnants of Harvey are currently located in the western Caribbean, about 300 miles east of Belize City, Belize.
 - Hurricane Hunters yesterday evening found a weak system lacking both a well defined center and tropical storm force winds. Shower and thunderstorm activity remains disorganized this morning.
 - Redevelopment of this system before it moves into the Yucatan Peninsula appears less likely, but once the system re-emerges into the southwest Gulf of Mexico on Wednesday, redevelopment appears much more likely as conditions will be favorable.
 - As a result, the National Hurricane Center gives it a 50% (medium) chance of redevelopment during the next 48 hours, and an 80% (medium) chance during the next five days.
 - If Harvey redevelops, it may impact northern Mexico or far southern Texas at the end of the week.
-
- An area of low pressure, designated Invest Area 92L, is located about 200 miles north of the Turks and Caicos Islands or about 500 miles east of Miami, Florida.
 - 92L is producing disorganized showers and thunderstorms this morning, mostly on the eastern side. Wind shear and dry air continues to hinder the system from getting organized, and conditions should remain mostly unfavorable for development during the next 24-48 hours.
 - However, conditions for tropical development may become more conducive during the middle of the week as it approaches Florida.
 - The National Hurricane Center is now giving 92L a 10% (low) chance of development over the next 48 hours, but a 40% (medium) chance of development over the next five days.
 - A hurricane hunter reconnaissance mission is scheduled to fly into the system this afternoon.
 - The system will continue to track west during the next 24-36 hours into or near South Florida. After this time, a front boundary to the north is likely to interact with the system and pull it northeast away from Florida.
 - The next name on the 2017 Atlantic Storm list is Irma.

- A tropical wave over the central Atlantic Ocean is producing limited showers and thunderstorms this morning. Conditions are not favorable for development as it moves northward.
- The National Hurricane Center has lowered the odds for development to near 0% (low) during the next five days.

Florida Outlook:

- The remnants of Harvey does not post a direct threat to Florida over the next five days.
- However, if it emerges into the southwestern Gulf of Mexico and intensifies, an increased risk for rip currents along the Florida Gulf Coast is possible later this week into the weekend.
- Invest 92L will approach South Florida Tuesday and Wednesday, but it will likely be only a tropical wave or depression. It should continue to be monitored closely.
- Regardless of development, locally heavy rainfall for South Florida on Tuesday and Wednesday is expected.
- Widespread rainfall amounts of 2-4" are likely in South Florida, with locally higher amounts possible.
- The central Atlantic tropical wave does not post a threat to Florida.

Another briefing packet will be issued this afternoon. For the latest information on the tropics, please visit the National Hurricane Center website at www.hurricanes.gov



TROPICAL UPDATE

Created by:

Amy Godsey, Chief State Meteorologist
amy.godsey@em.myflorida.com

State Meteorological Support Unit
Florida Division of Emergency
Management

Users wishing to subscribe (approval pending) to this distribution list, register at https://public.govdelivery.com/accounts/FLDEM/subscriber/new?topic_id=SERT_Met_Tropics.

Other reports available for subscription are available at <https://public.govdelivery.com/accounts/FLDEM/subscriber/new?preferences=true>