



TROPICAL UPDATE

9 AM EDT

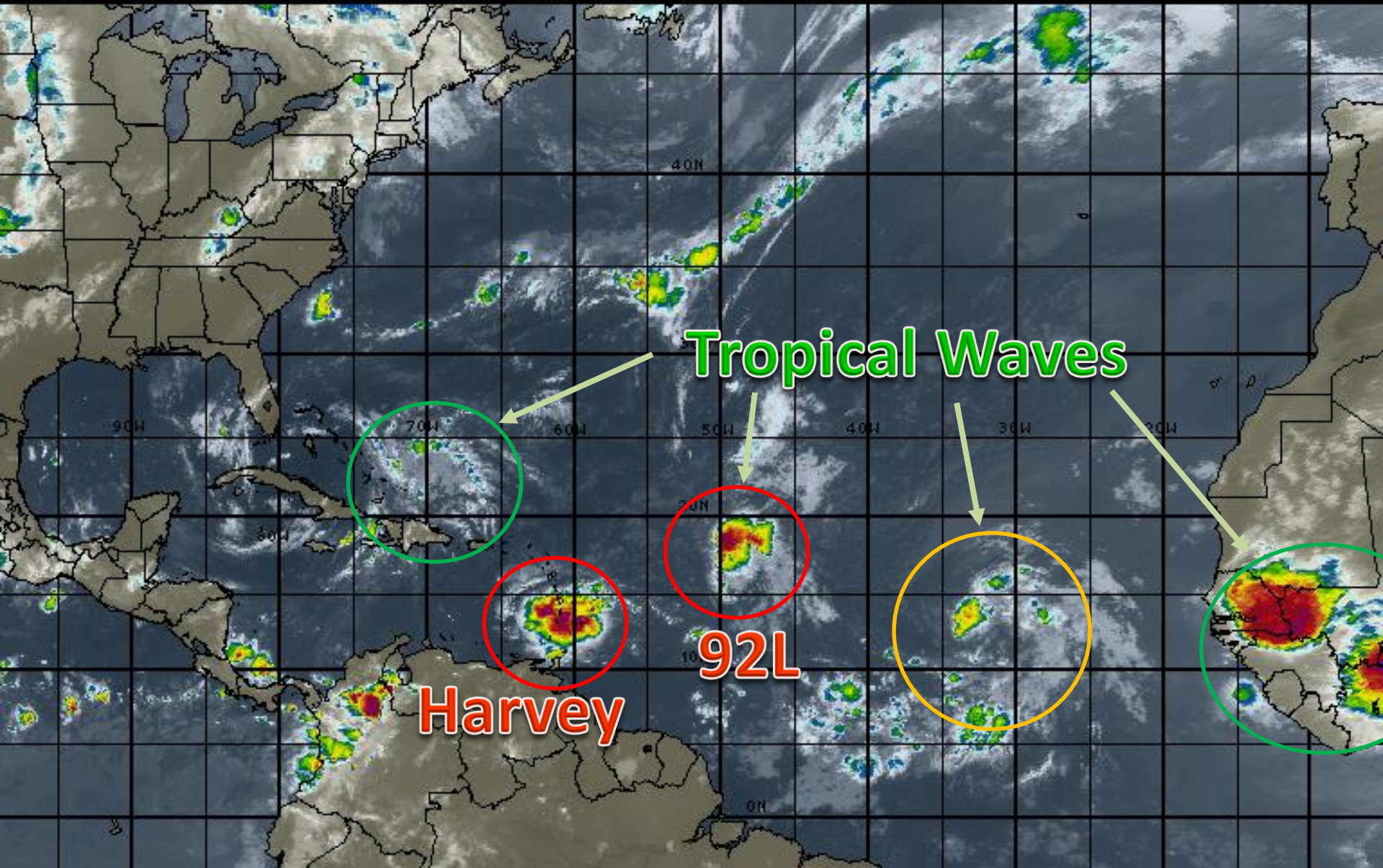
Friday, August 18, 2017

**Tropical Storm Harvey, Invest 92L (70%) & East
Atlantic Tropical Wave (40%)**

This update is intended for government and emergency response officials, and is provided for informational and situational awareness purposes only. Forecast conditions are subject to change based on a variety of environmental factors. For additional information, or for any life safety concerns with an active weather event please contact your County Emergency Management or Public Safety Office, local National Weather Service forecast office or visit the National Hurricane Center website at www.nhc.noaa.gov.

Atlantic Basin Satellite Image

09:00 18-AUG-2017 GMT Copyright © 1998-2016 MSI Corporation <http://www.wsi.com>





Five-Day Graphical Tropical Weather Outlook

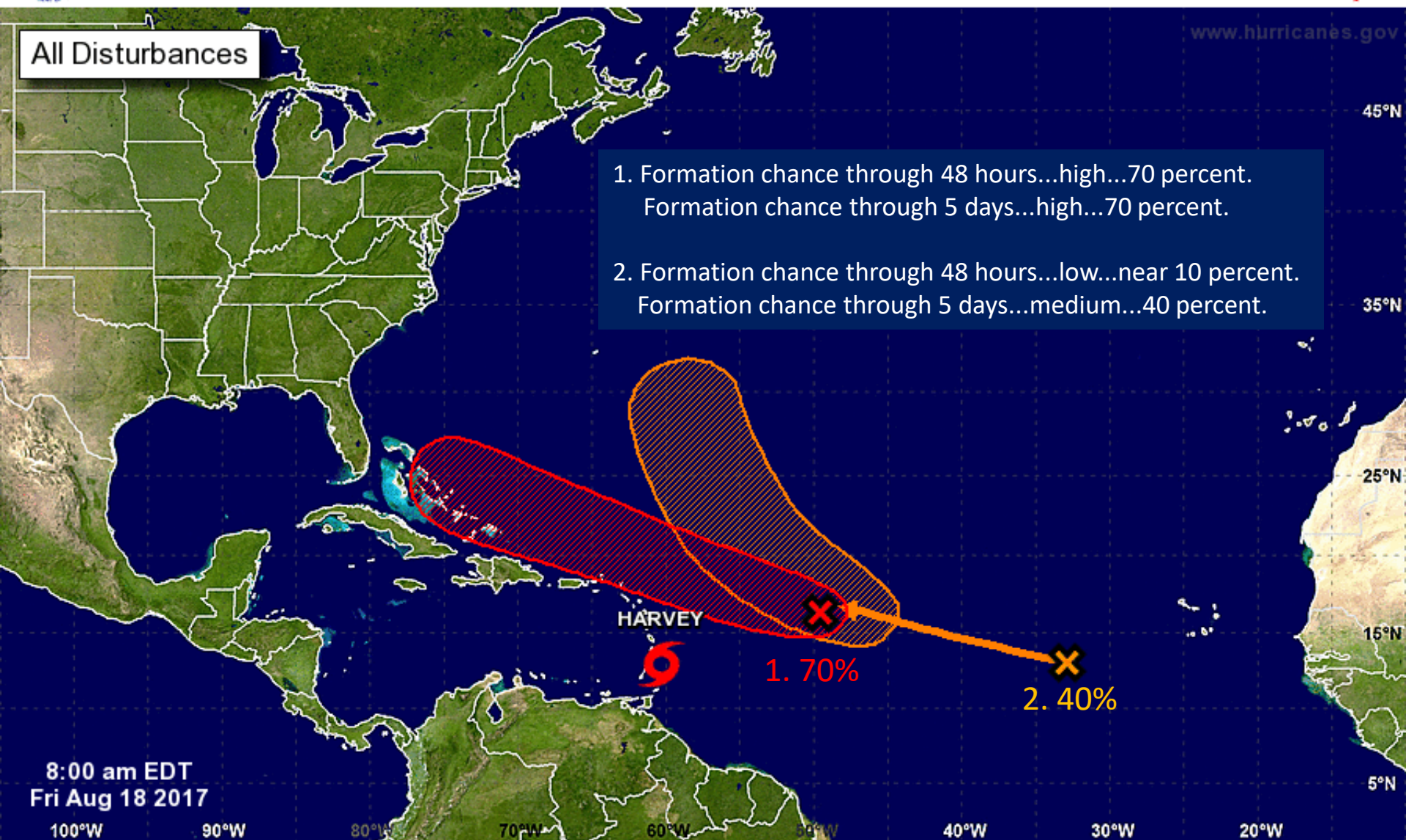
National Hurricane Center Miami, Florida



www.hurricanes.gov

All Disturbances

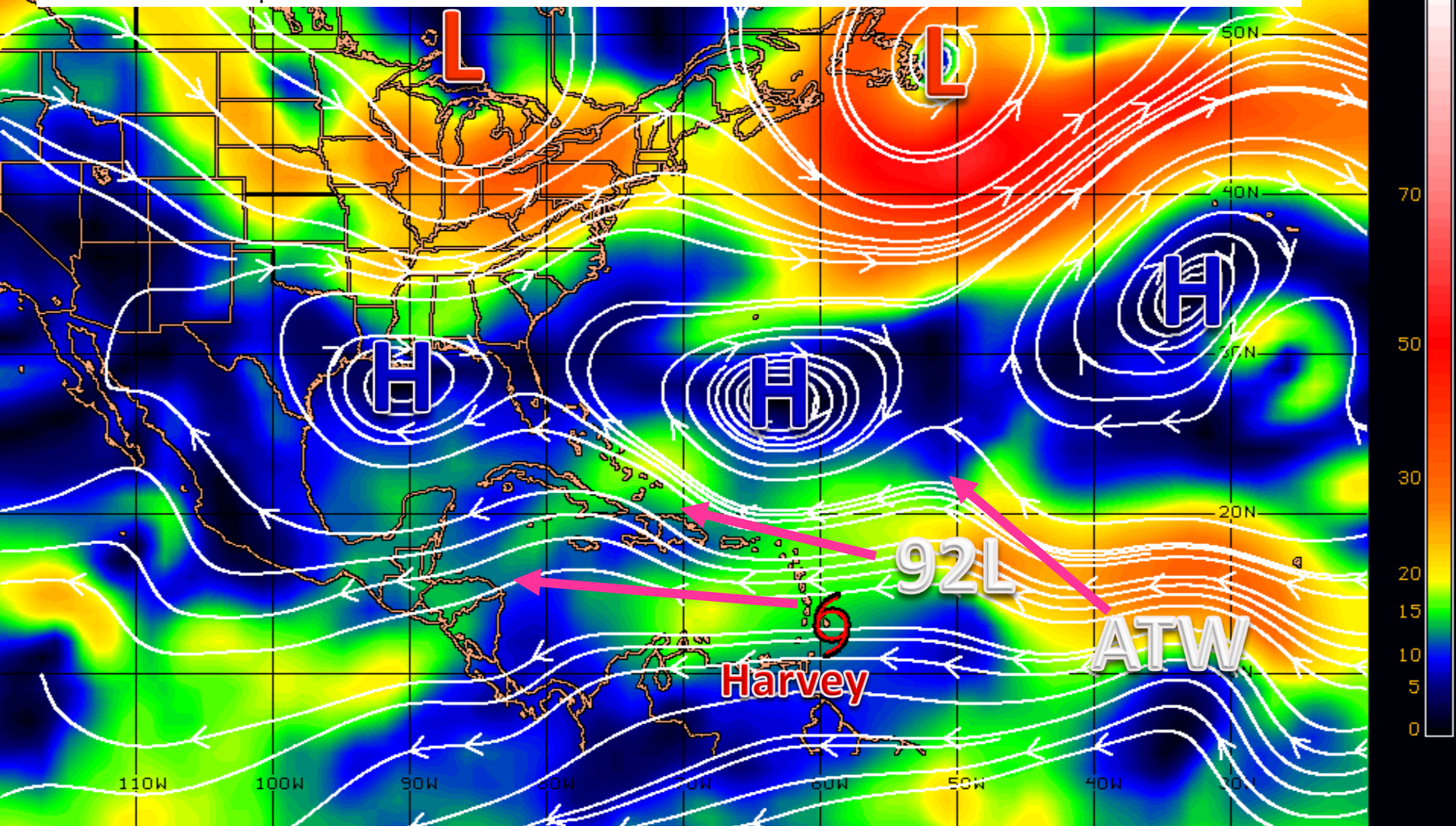
1. Formation chance through 48 hours...high...70 percent.
Formation chance through 5 days...high...70 percent.
2. Formation chance through 48 hours...low...near 10 percent.
Formation chance through 5 days...medium...40 percent.



Current Disturbances and Five-Day Cyclone Formation Chance: < 40% 40-60% > 60%
Tropical or Sub-Tropical Cyclone: Depression Storm Hurricane
 Post-Tropical Cyclone Remnants

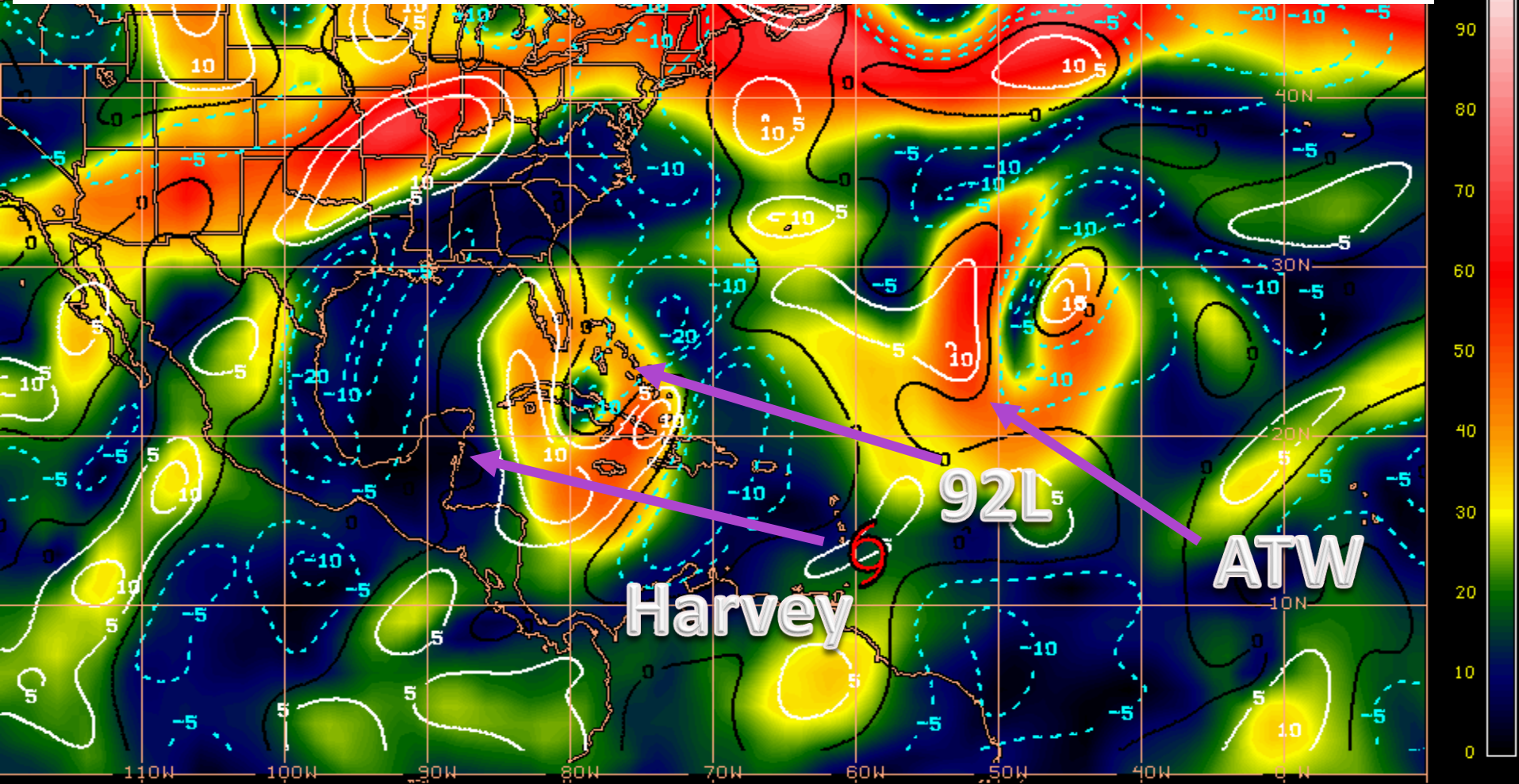
Steering Currents

3 areas of high pressure will steer the tropical systems for the next 3-5 days, but gaps in between these areas often allow for curvature northward. High pressure in the Gulf of Mexico and western Atlantic is forecast to remain in place through Wednesday, with the eastern Azores High expected to weaken and allow the far eastern atlantic tropical wave to move northwest.

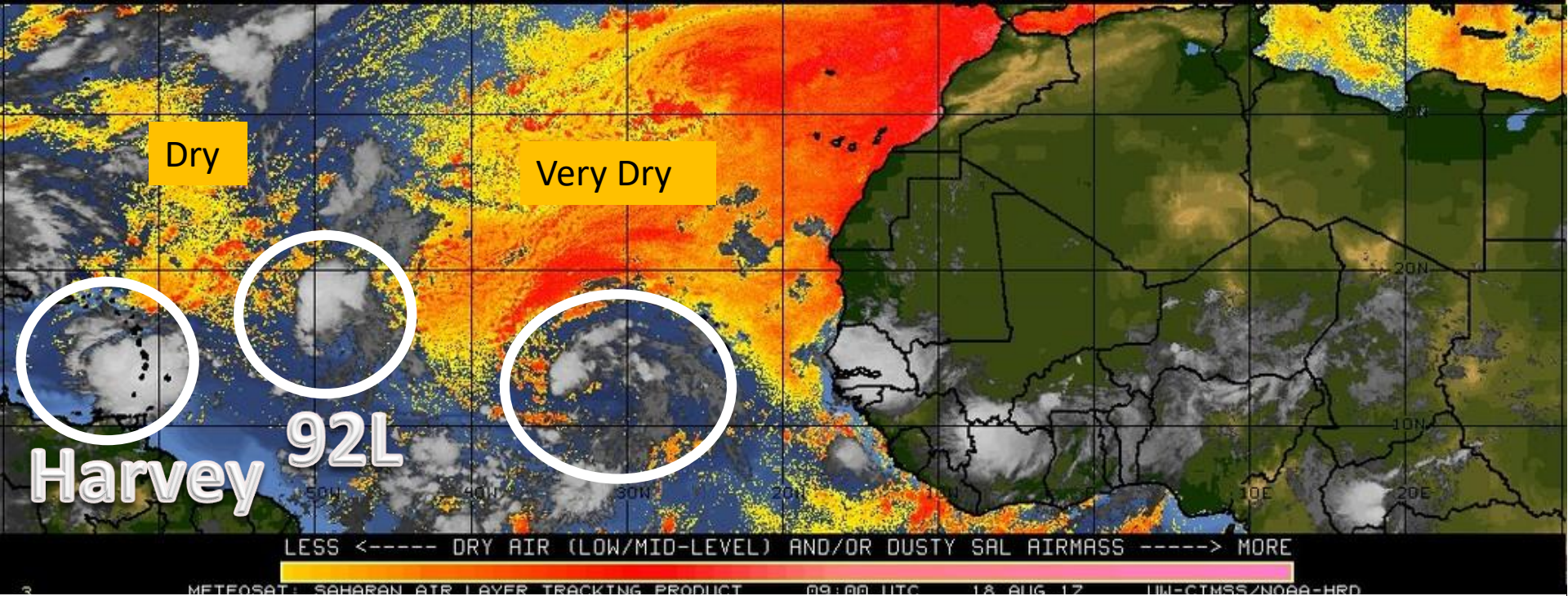


Current Wind Shear (shaded) and Shear Tendency (lines)

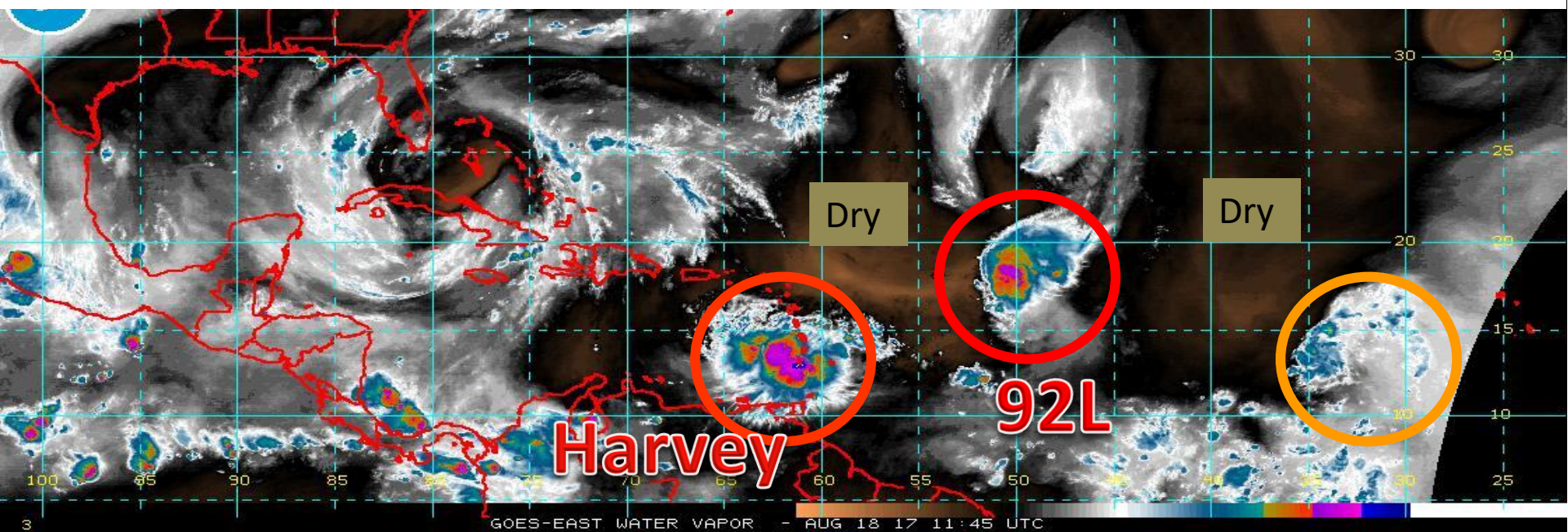
While shear will be the largest hurdle for all 3 systems. Shear is light at the moment near T.S. Harvey and the Atlantic Tropical Wave (ATW), but wind shear is increasing near 92L. Wind shear is expected to increase for Harvey as it moves through the Caribbean, remain moderate to strong near 92L and near Florida, and shear currently near 92L will eventually influence the ATW.



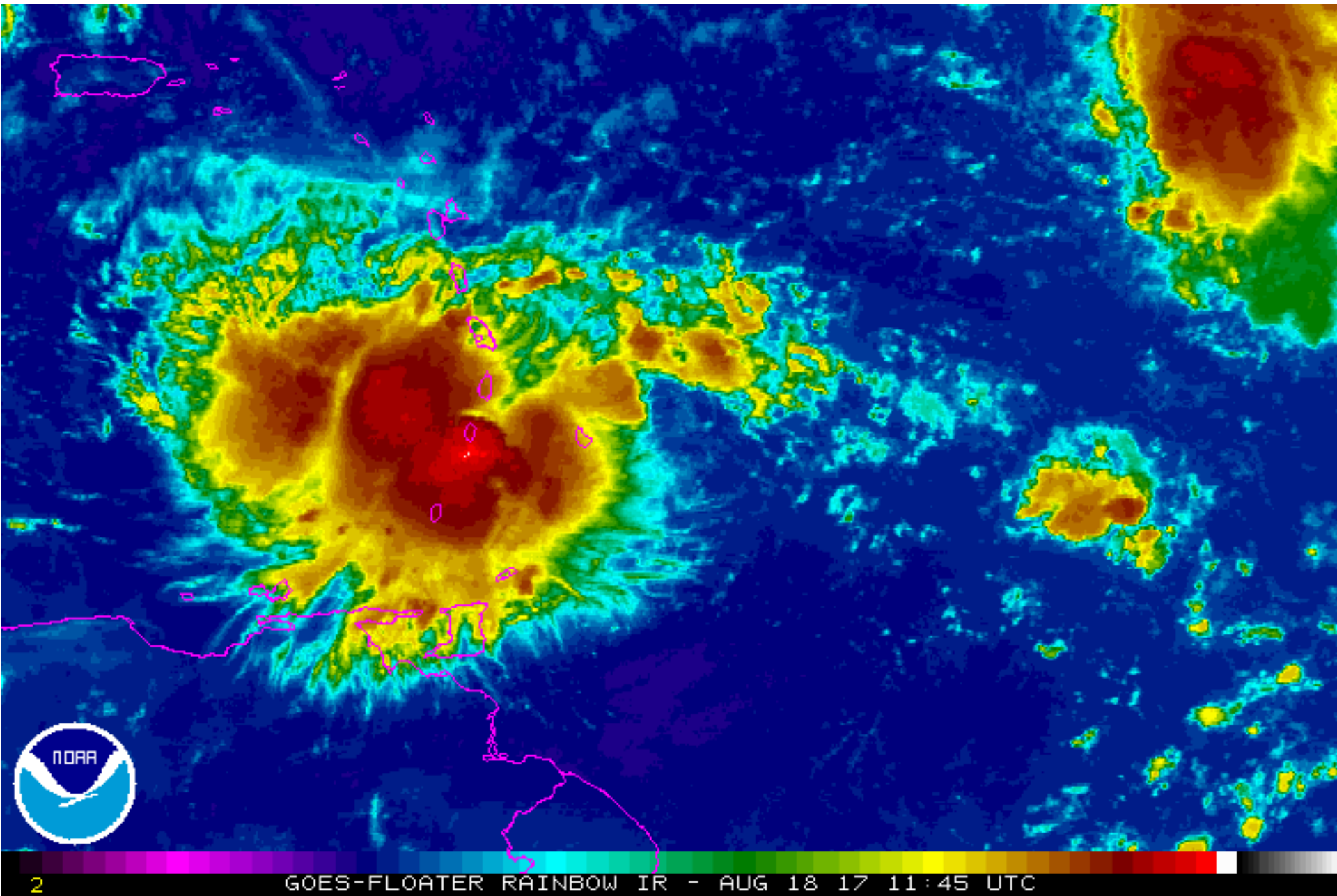
Shear Tendency (KTS) Over Past 24 Hours: Increasing — Decreasing ----



Areas of dry air ahead of 92L and the eastern Atlantic tropical wave may also impede development.

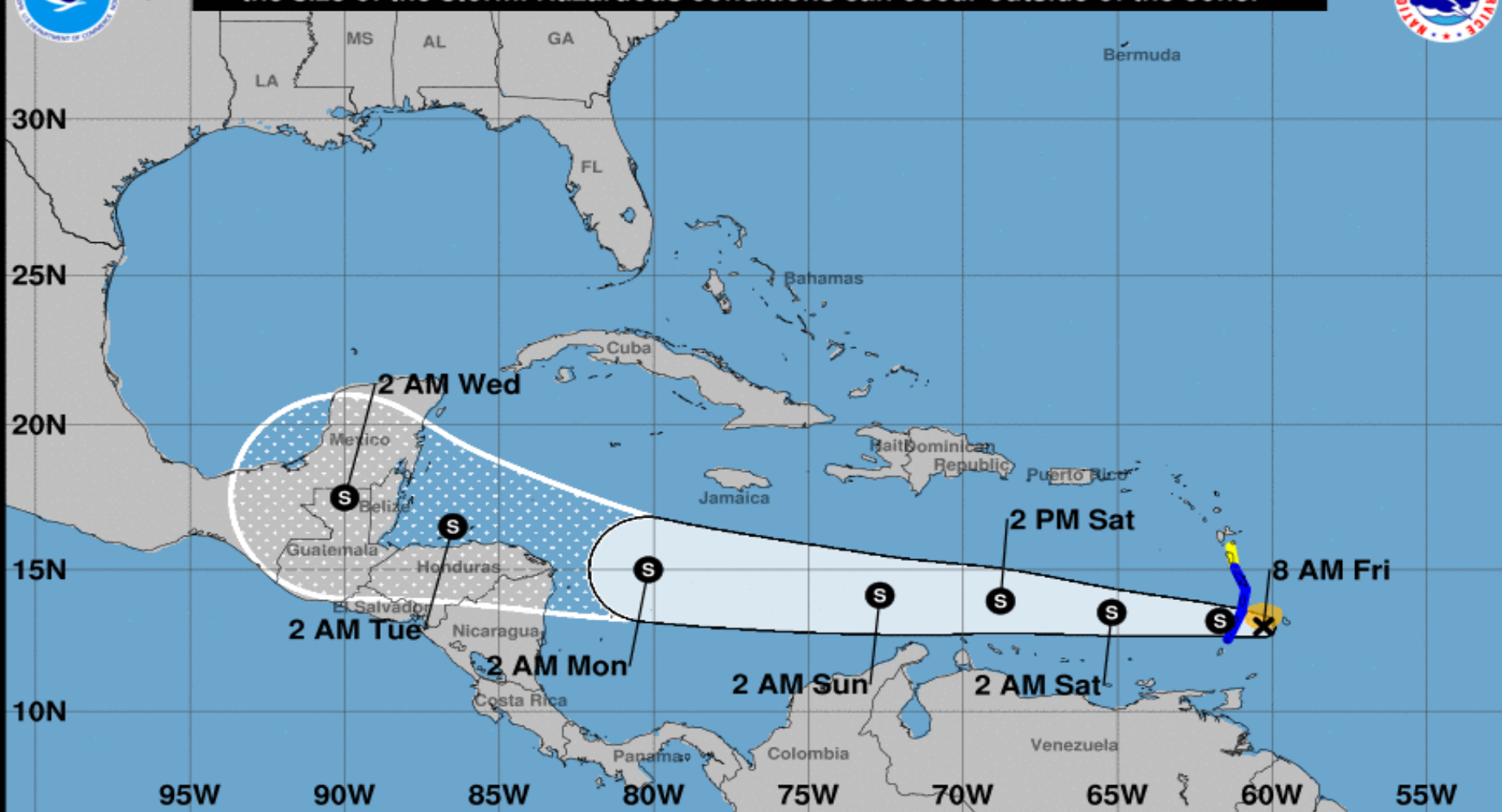


Tropical Storm Harvey Satellite





Note: The cone contains the probable path of the storm center but does not show the size of the storm. Hazardous conditions can occur outside of the cone.



Tropical Storm Harvey

Friday August 18, 2017

8 AM AST Intermediate Advisory 4A

NWS National Hurricane Center

Current information: X

Center location 13.0 N 60.3 W

Maximum sustained wind 40 mph

Movement W at 18 mph

Forecast positions:

● Tropical Cyclone ○ Post/Potential TC

Sustained winds: D < 39 mph

S 39-73 mph H 74-110 mph M > 110 mph

Potential track area:

Day 1-3 Day 4-5

Watches:

Hurricane Trop Stm

Warnings:

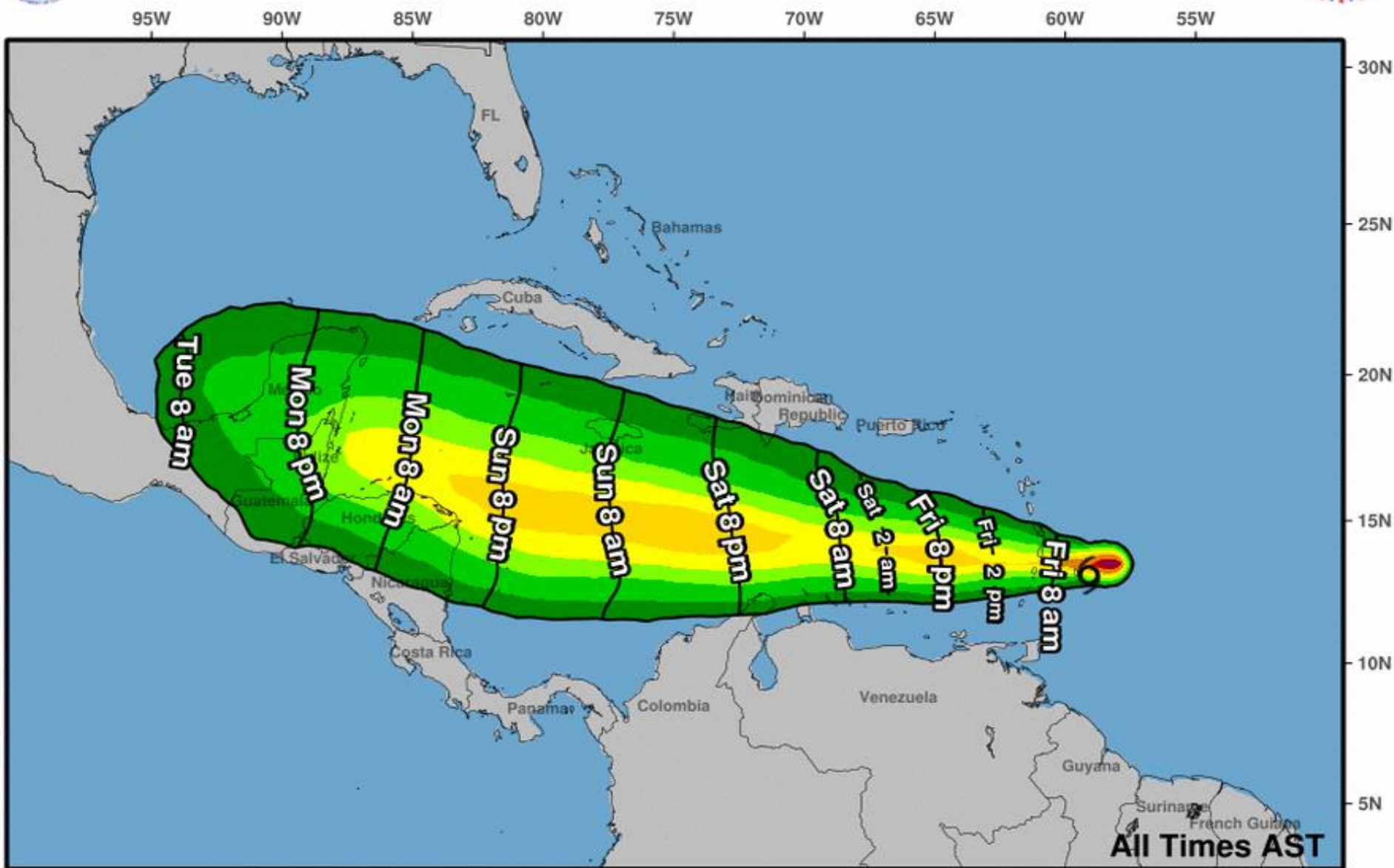
Hurricane Trop Stm

Current wind extent:

Hurricane Trop Stm



Earliest Reasonable Arrival Time of Tropical-Storm-Force Winds



Tropical Storm Harvey
Fri. Aug. 18, 2017 5 am AST
Advisory 4

Storm Location & Wind Speed (knots)

○ <34 ◐ 34-63 ● ≥64

Five-day chance of receiving sustained 34+ knot (39+ mph) winds

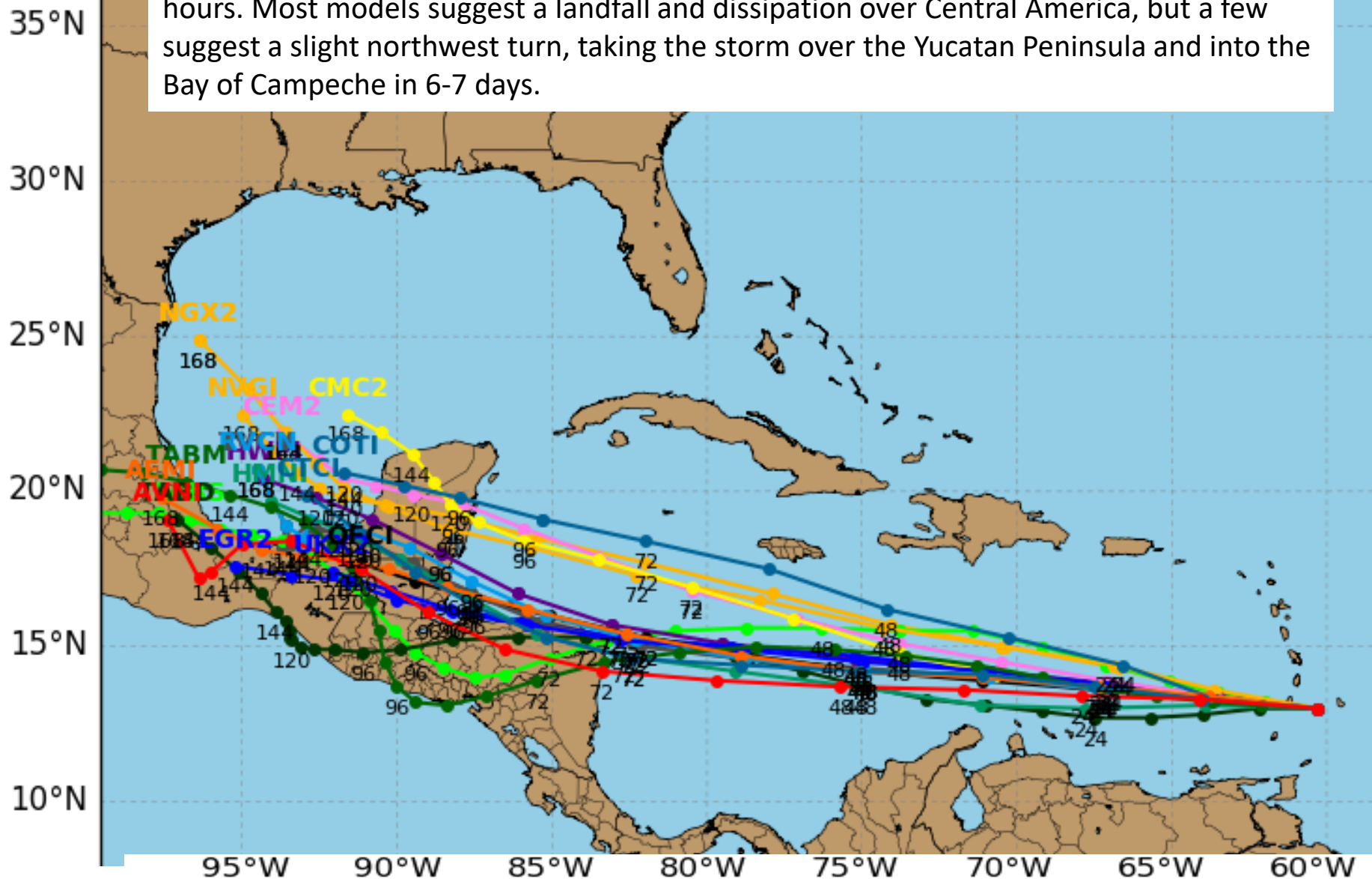
5	10	20	30	40	50	60	70	80	90	100 %
---	----	----	----	----	----	----	----	----	----	-------

Tropical Storm HARVEY Model Track Guidance

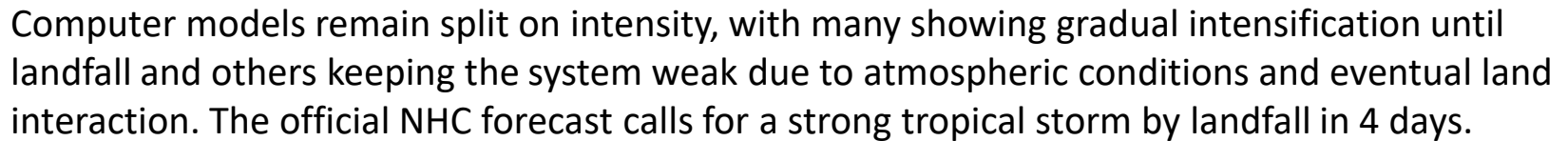
Initialized at 12z Aug 18 2017

Levi Cowan - tropicaltidbits.com

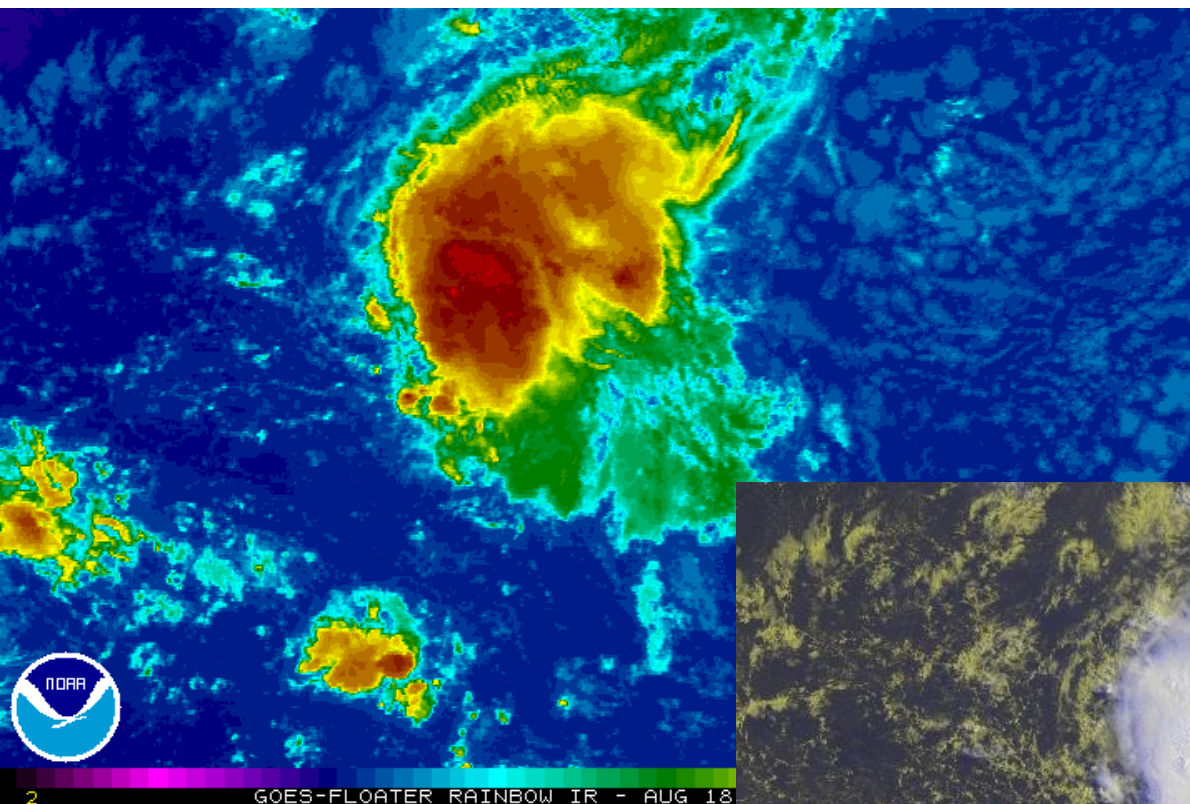
Models are in good agreement through the first 48 hours but somewhat diverge after 72 hours. Most models suggest a landfall and dissipation over Central America, but a few suggest a slight northwest turn, taking the storm over the Yucatan Peninsula and into the Bay of Campeche in 6-7 days.



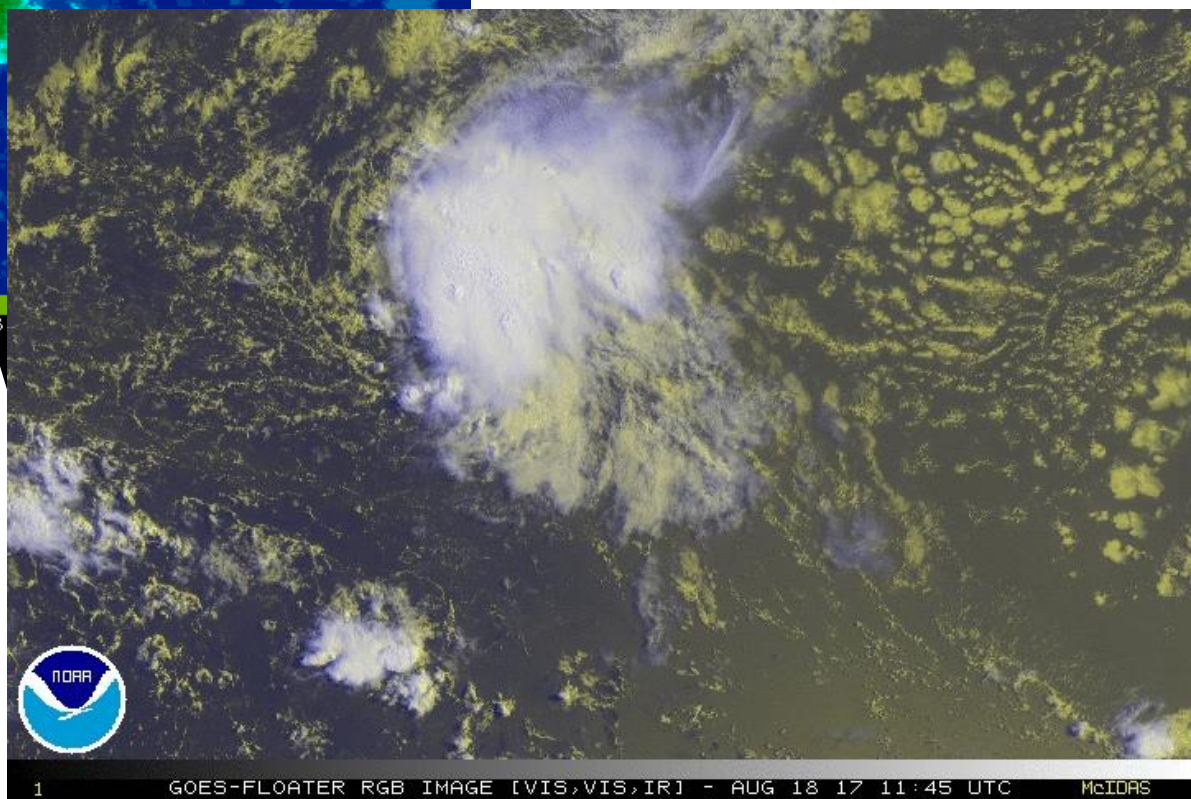
Levi Cowan - tropicaltidbits.com



92L (Area 1) Satellite



Thunderstorm activity has increased near Invest Area 92L, but it continues to have a more broad center of circulation. However, it would take only a slight increase in organization for a tropical depression to form later today or tonight.

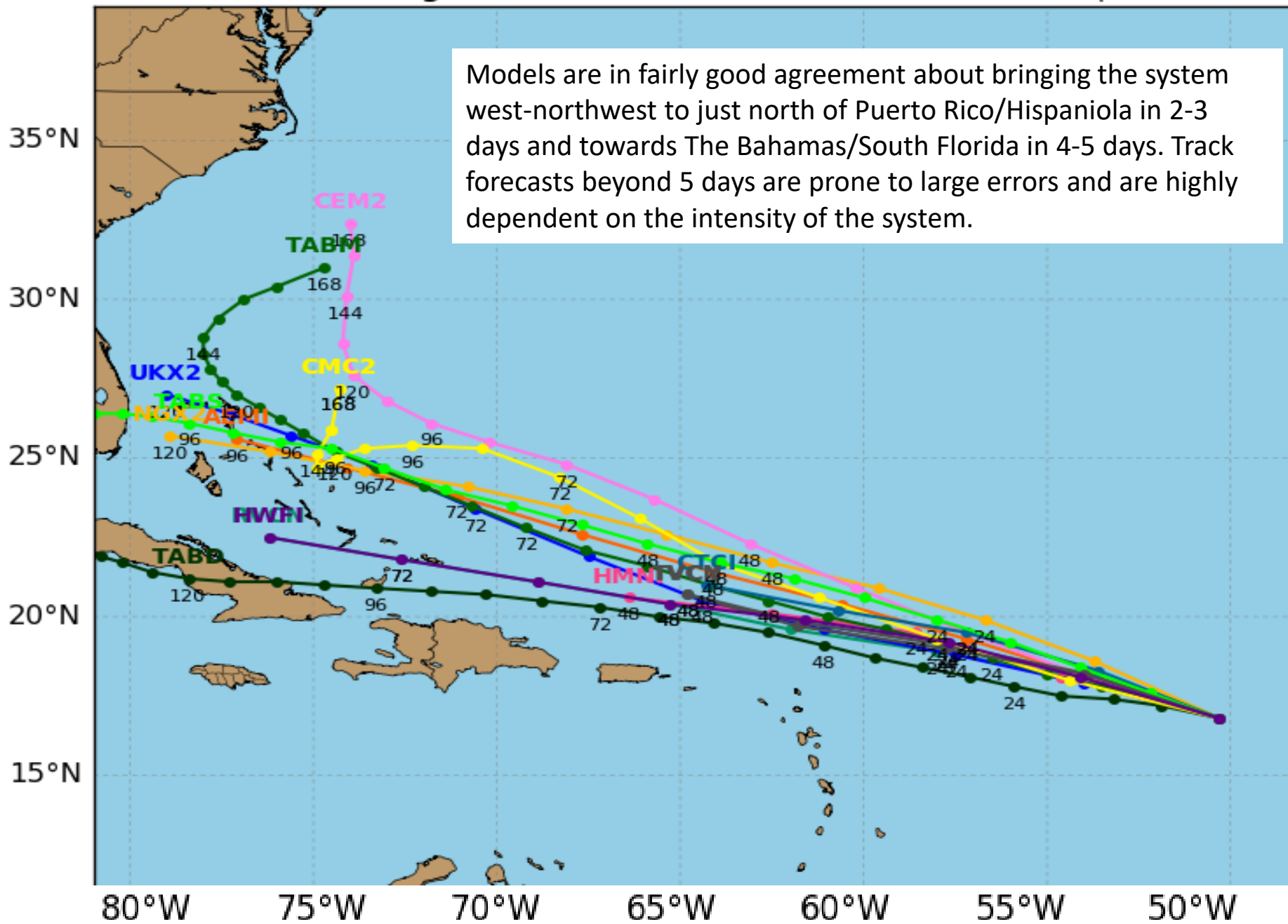


Invest 92L Model Track Guidance

Initialized at 12z Aug 18 2017

Levi Cowan - tropicaltidbits.com

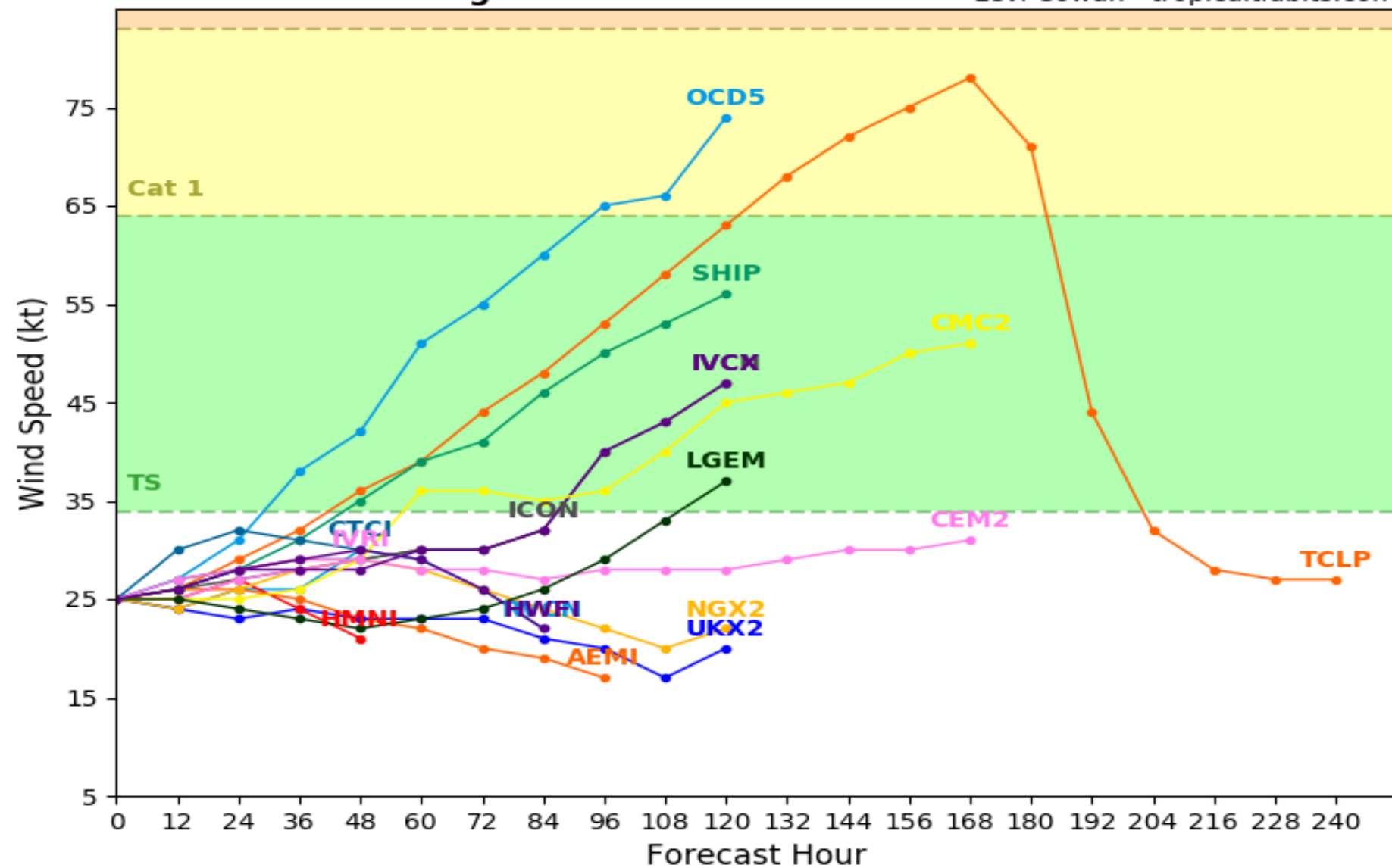
Models are in fairly good agreement about bringing the system west-northwest to just north of Puerto Rico/Hispaniola in 2-3 days and towards The Bahamas/South Florida in 4-5 days. Track forecasts beyond 5 days are prone to large errors and are highly dependent on the intensity of the system.



Invest 92L Model Intensity Guidance

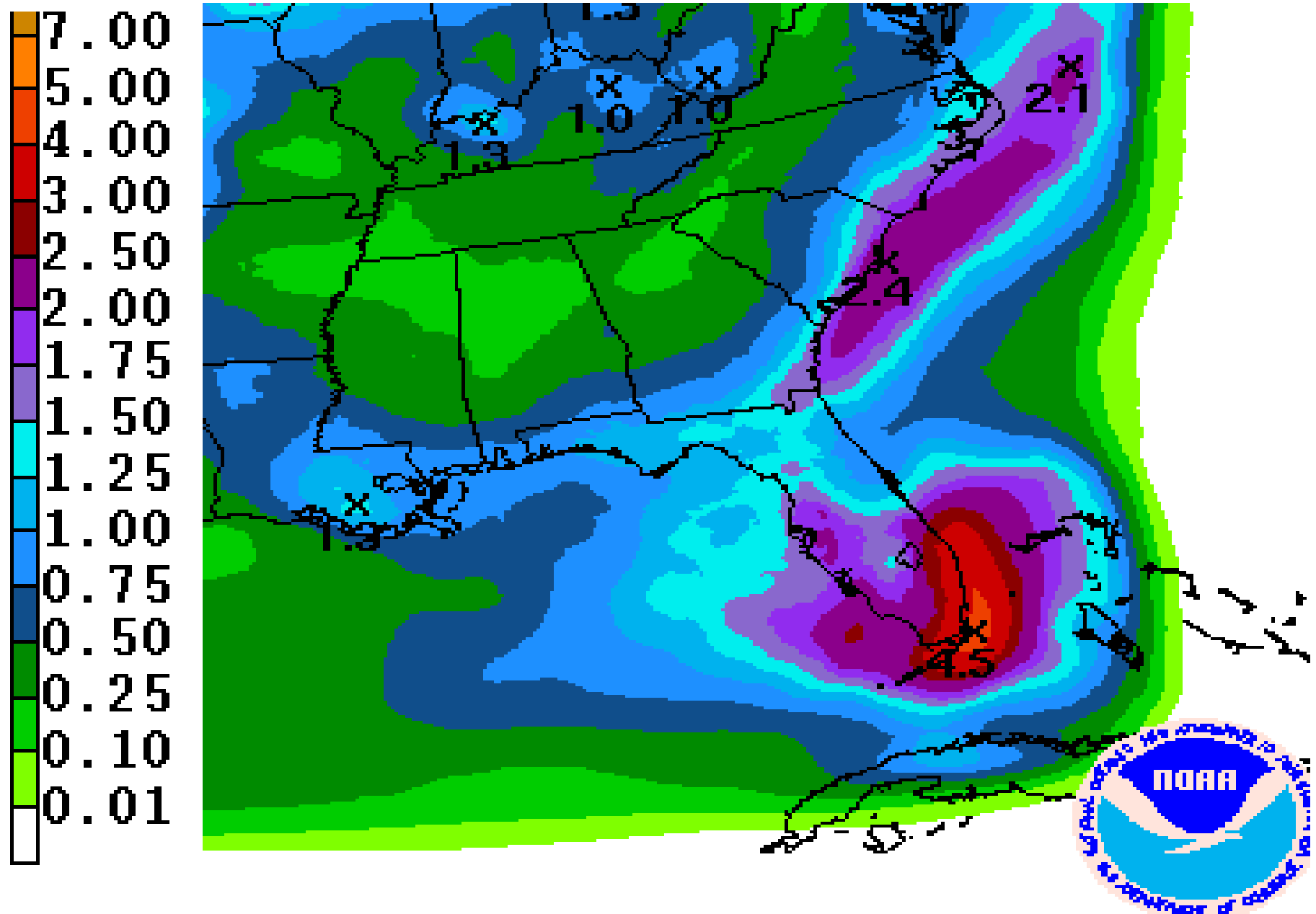
Initialized at 12z Aug 18 2017

Levi Cowan - tropicaltidbits.com



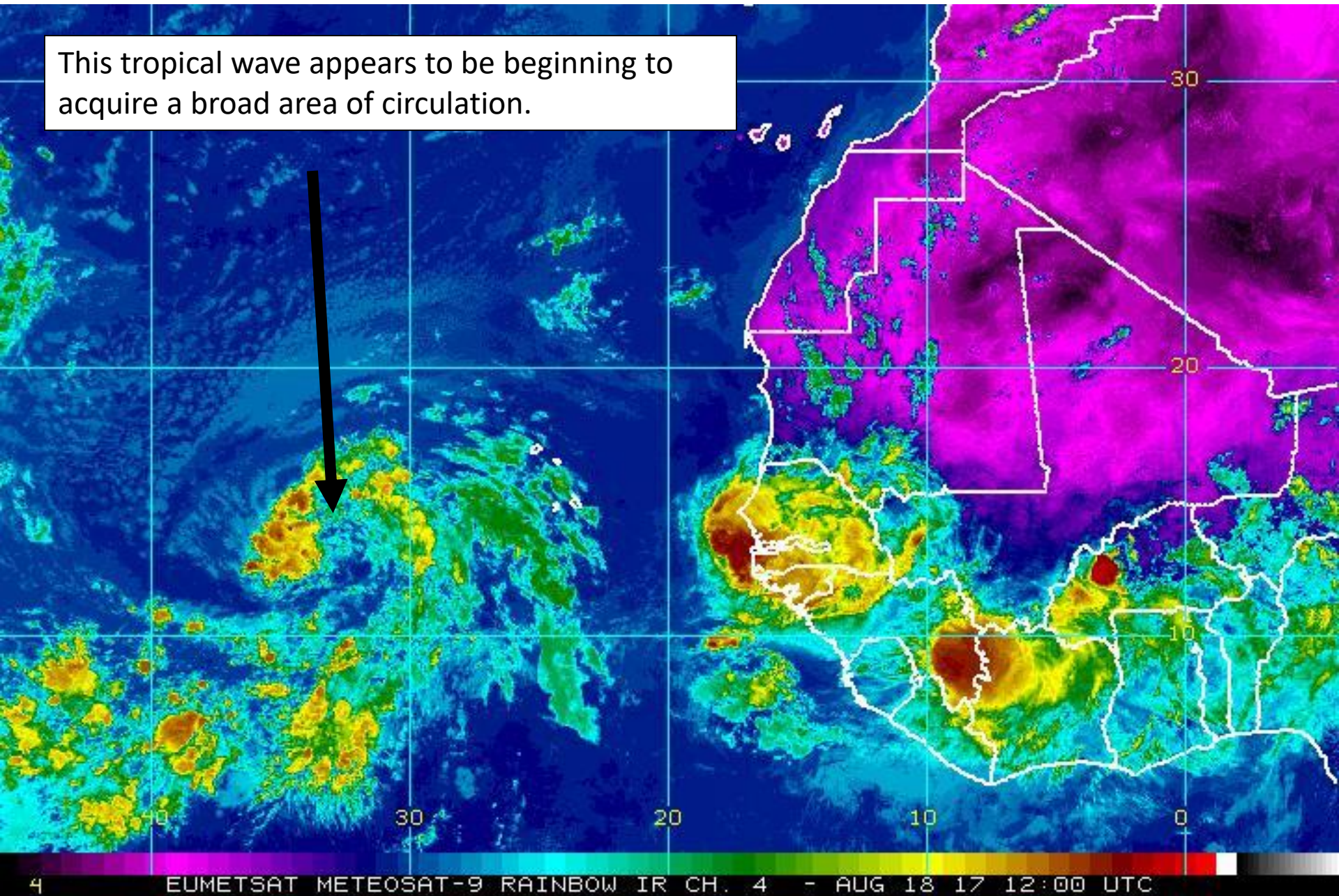
Computer models keep this system weak (ranging from a tropical wave to weak tropical storm) since atmospheric conditions are predicted to be unfavorable as the system nears the western Atlantic. **Note: The TCLP, OCD5 and SHIP are statistical/historical models that do not take into account the forecast the state of the atmosphere. Also note the CMC2 is stronger due to a predicted stall/turn to the north before arriving in the Bahamas.**

Forecast Cumulative Rainfall – Next 7 Days



Atlantic Tropical Wave (Area 2) Satellite

This tropical wave appears to be beginning to acquire a broad area of circulation.



Summary

- At 5pm EDT Thursday, Hurricane Gert degenerated into a post-tropical low in the North Atlantic and advisories on the system were discontinued.
- At 5pm EDT Thursday, Potential Tropical Cyclone #9 (formerly invest 91L) was upgraded to Tropical Storm Harvey.
- At 8am EDT Friday, Tropical Storm Harvey was approaching the Leeward Islands, which is 1,560 miles southeast of Miami, Florida, and moving quickly west at 18mph.
- Maximum sustained winds are near 40 mph, and additional strengthening is expected to occur as it travels through the Caribbean Sea over the next 5 days. There is a chance that it could become a hurricane before landfall, but the current forecast is for a strong tropical storm due to increasing wind shear.
- Further east, an area of low pressure (Invest 92L) in the central Atlantic about 750 miles northeast of the Leeward Islands (2,050 miles southeast of Miami), has become more organized since yesterday.
- While this system could form into a tropical depression today or tonight, environmental conditions are becoming less favorable for development.
- As a result, the National Hurricane Center is predicting a 70% (high) chance of it becoming a depression within the next 48 hours.
- An Air Force Reserve Hurricane Hunter reconnaissance aircraft is scheduled to investigate this system Saturday afternoon, if necessary.
- The next name on the 2017 Atlantic name list is Irma.

- Computer models are in fairly good agreement, bringing 92L north of Puerto Rico this weekend and approaching the Bahamas and South Florida next Monday and Tuesday, but as a weak system (ranging from tropical wave to weak tropical storm).
- A tropical wave off the west coast of Africa continues to produce a large area of disorganized showers and thunderstorms.
- Conditions will be favorable for development, and there is a 40% (medium) chance of it becoming a depression or storm within the next 5 days.
- The full suite of computer models have not been run on this system yet, but global models suggest development into a system is possible next week.

Florida Outlook:

- Tropical Storm Harvey does not pose a threat to Florida within the next 5 days. If the system were to emerge into the southwestern Gulf of Mexico next week, it could increase the rip current risk to portions of the Gulf Coast.
- Computer models suggest 92L could approach southern Florida in 4-5 days, but as a weak system.
- However, Floridians should still monitor the progress of the system for any changes in intensity.
- The most likely impact at this time would be the threat for locally heavy rain to South Florida next Monday-Wednesday.
- It is too early to speculate on any additional impacts to Florida from 92L.
- The eastern Atlantic tropical wave does not pose a threat to Florida.

Another briefing packet will be issued this afternoon. For more information on these systems visit the NHC website at www.nhc.noaa.gov



TROPICAL UPDATE

Created by:

Amy Godsey, Chief State Meteorologist
amy.godsey@em.myflorida.com

State Meteorological Support Unit
Florida Division of Emergency
Management

Users wishing to subscribe (approval pending) to this distribution list, register at https://public.govdelivery.com/accounts/FLDEM/subscriber/new?topic_id=SERT_Met_Tropics.

Other reports available for subscription are available at <https://public.govdelivery.com/accounts/FLDEM/subscriber/new?preferences=true>