



TROPICAL UPDATE

5 PM EDT

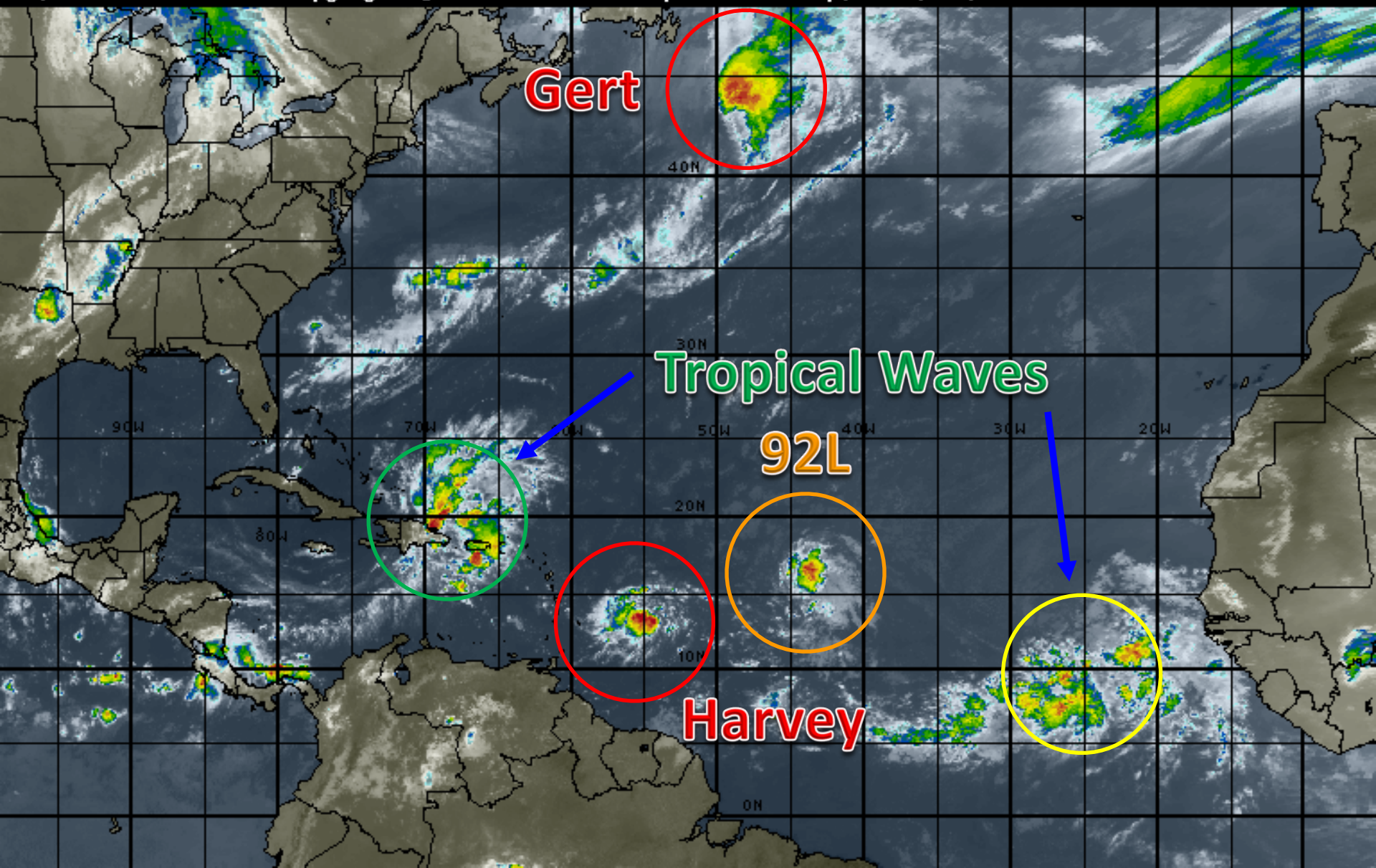
Thursday, August 17, 2017

**Post-Tropical Storm Gert, Tropical Storm Harvey,
Invest 92L (60%), & Tropical Wave (30%)**

This update is intended for government and emergency response officials, and is provided for informational and situational awareness purposes only. Forecast conditions are subject to change based on a variety of environmental factors. For additional information, or for any life safety concerns with an active weather event please contact your County Emergency Management or Public Safety Office, local National Weather Service forecast office or visit the National Hurricane Center website at www.nhc.noaa.gov.

Atlantic Basin Satellite Image

15:00 17-AUG-2017 GMT Copyright © 1998-2016 WSI Corporation <http://www.wsi.com>



Post-Tropical Cyclone Gert

Blue Marble basemap imagery courtesy NASA

4 PM EST Thu Aug 17 2017

Position 44.8 N 46.0 W

Maximum Winds 65 mph

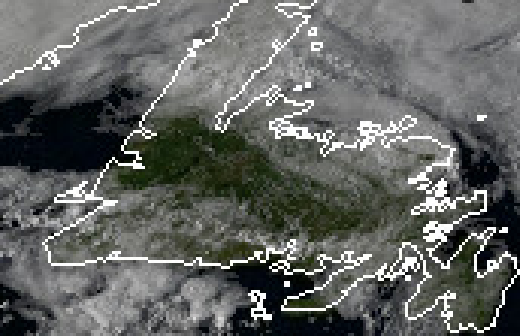
Gusts 75 mph

Movement ENE at 39 mph

Minimum Pressure 985 mb (29.08 inches)

Satellite 8:46 PM UTC

4:46 PM EDT





Five-Day Graphical Tropical Weather Outlook

National Hurricane Center Miami, Florida



www.hurricanes.gov

All Disturbances

GERT

- * Formation chance through 48 hours...**medium...60 percent.**
* Formation chance through 5 days...**medium...60 percent.**
- * Formation chance through 48 hours...**low...near 0 percent.**
* Formation chance through 5 days...**low...30 percent.**

2:00 pm EDT
Thu Aug 17 2017

100°W 90°W 80°W 70°W 60°W 50°W 40°W 30°W 20°W

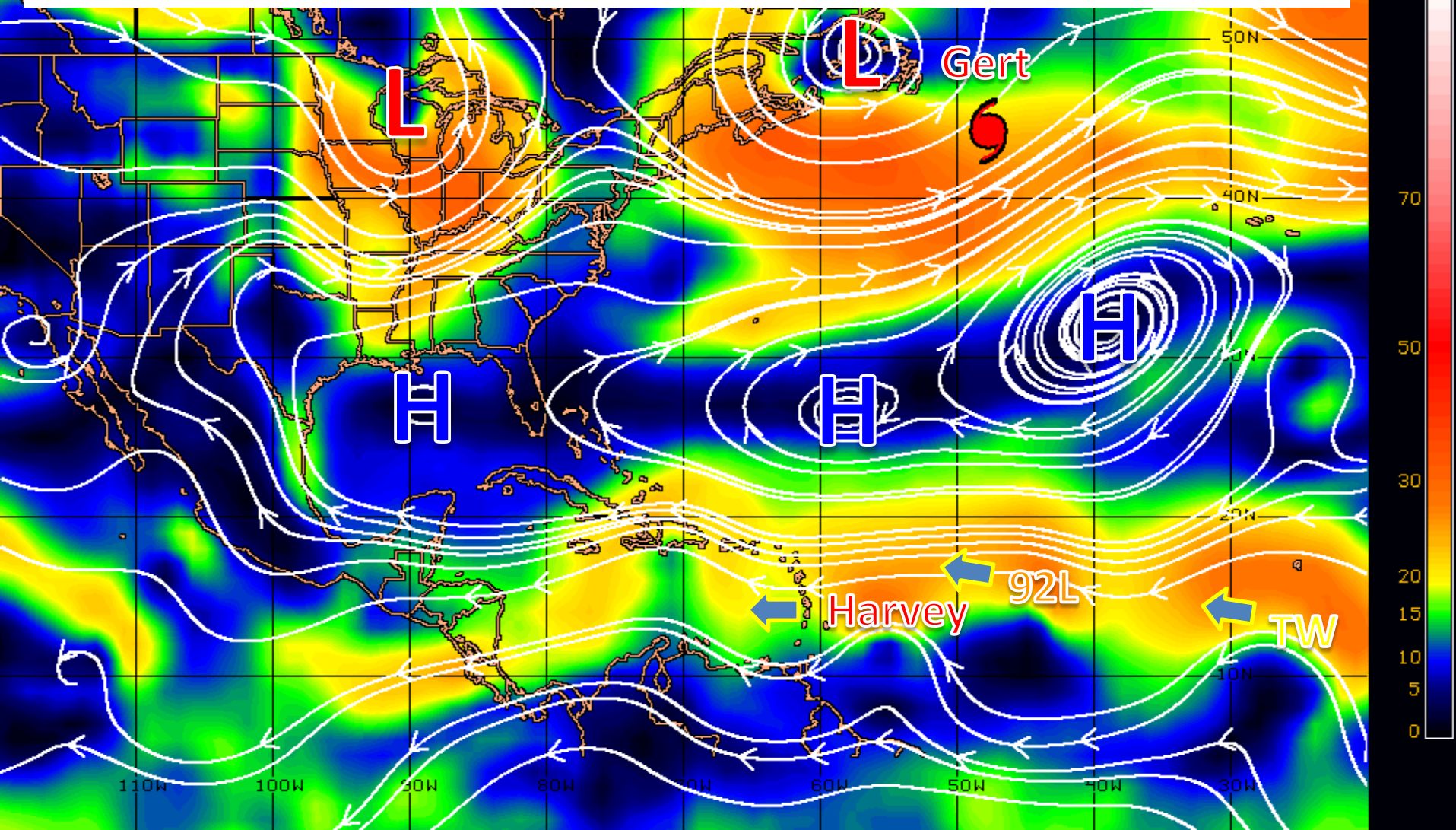
Current Disturbances and Five-Day Cyclone Formation Chance: < 40% 40-60% > 60%

Tropical or Sub-Tropical Cyclone: Depression Storm Hurricane

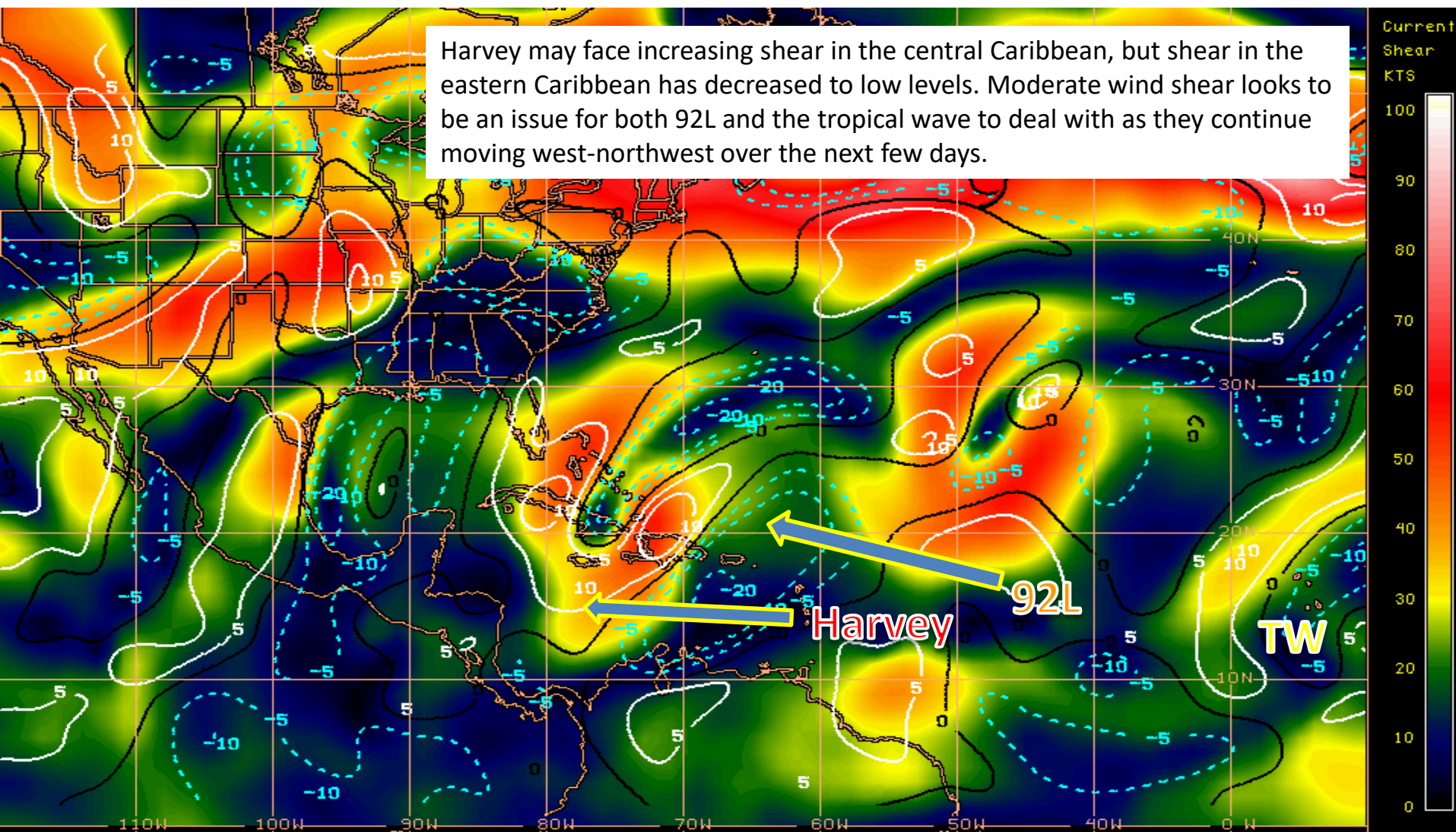
Post-Tropical Cyclone Remnants

Steering Currents

The areas of high pressure will keep Harvey on a westerly track and 92L and the tropical wave on a west-northwesterly track. However, the high pressure over the Gulf of Mexico and Florida is expected to weaken next week, possibly allowing a more northerly track for 92L and the tropical wave.



Current Wind Shear (Shaded) and Shear Tendency (Lines)



Shear Tendency (KTS) Over Past 24 Hours: Increasing — Decreasing ----

Tropical Storm Harvey

4PM EST Thu Aug 17 2017

Position 13.0N 55.8 W

Maximum Winds 40 mph

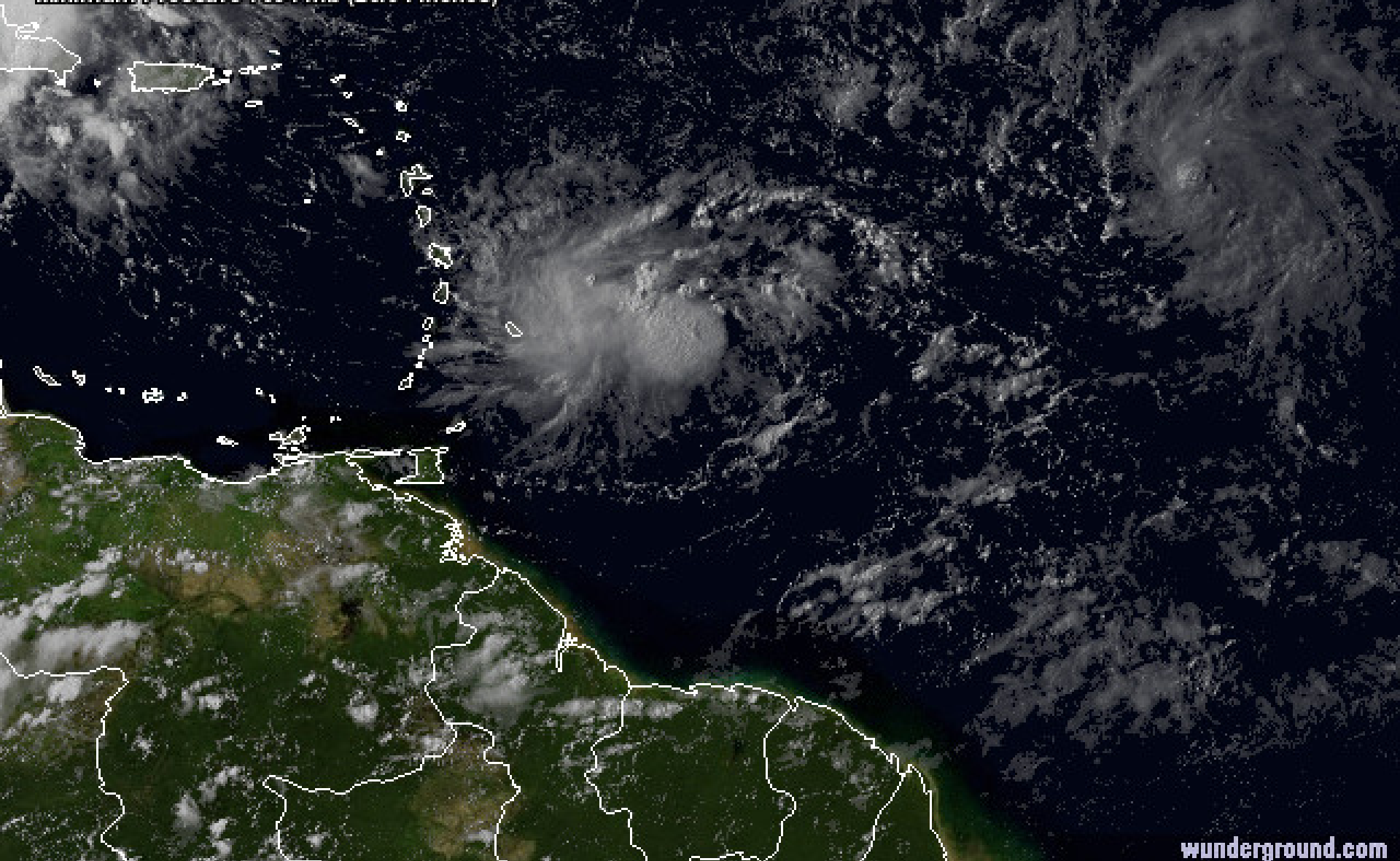
Gusts 50 mph

Movement W at 18 mph

Minimum Pressure 1004 mb (29.64 inches)

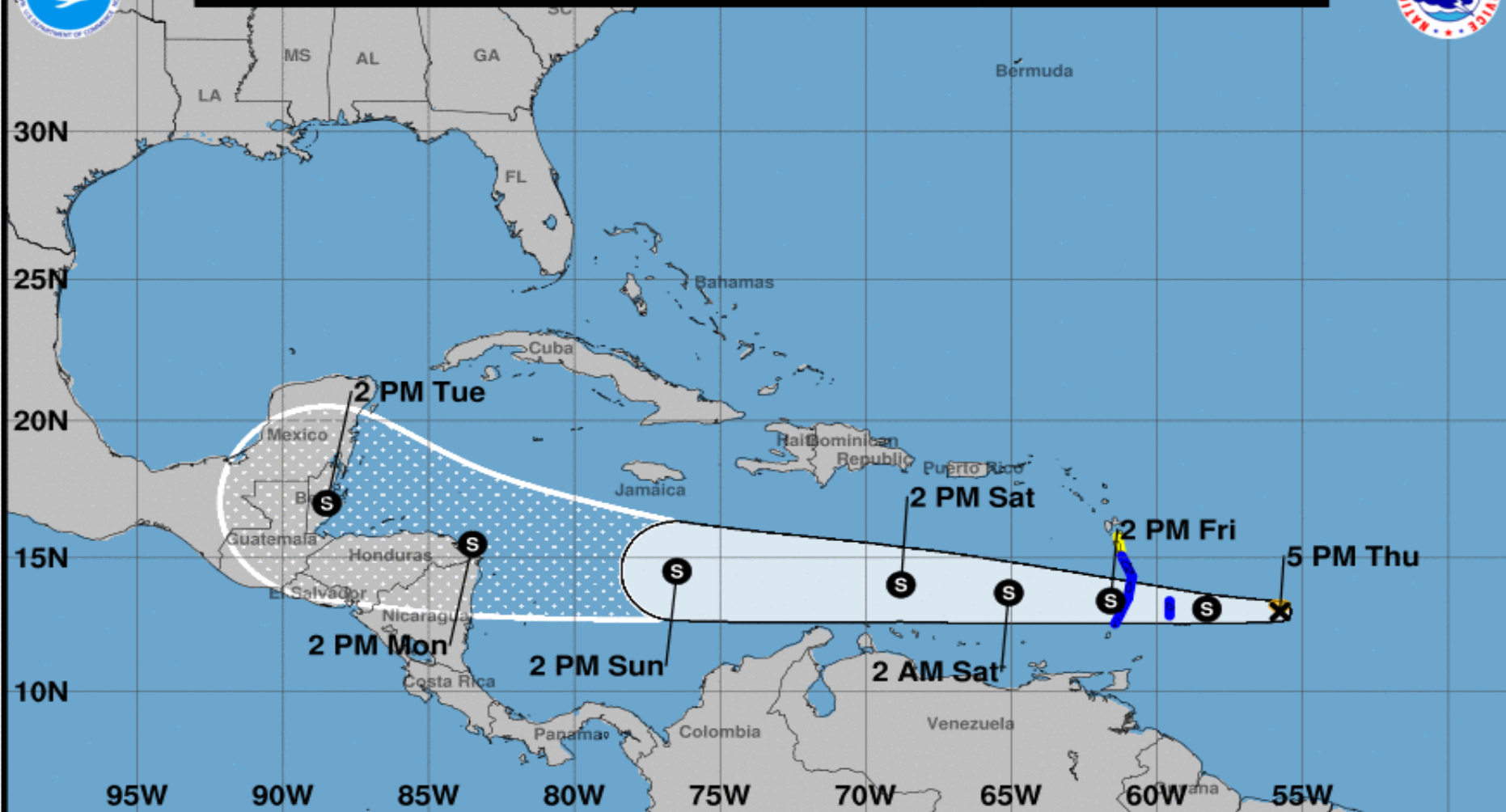
Blue Marble basemap imagery courtesy NASA

Satellite 8:58 PM UTC
4:58 PM EDT





Note: The cone contains the probable path of the storm center but does not show the size of the storm. Hazardous conditions can occur outside of the cone.



Tropical Storm Harvey

Thursday August 17, 2017

5 PM AST Advisory 2

NWS National Hurricane Center

Current information: x

Center location 13.0 N 55.8 W

Maximum sustained wind 40 mph

Movement W at 18 mph

Forecast positions:

● Tropical Cyclone ○ Post/Potential TC

Sustained winds: D < 39 mph

S 39-73 mph H 74-110 mph M > 110 mph

Potential track area:

Day 1-3 Day 4-5

Watches:

Hurricane Trop Stm

Warnings:

Hurricane Trop Stm

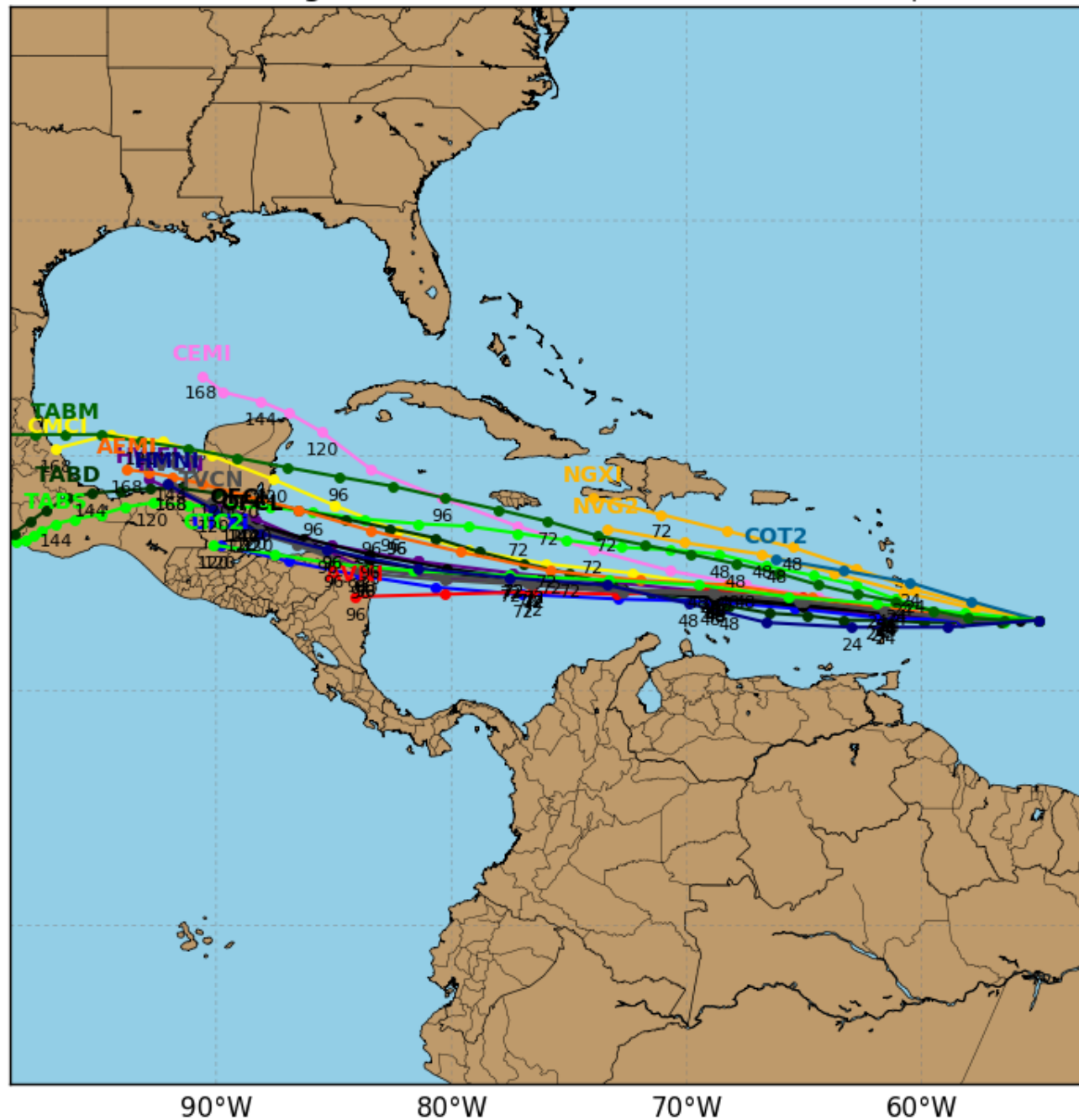
Current wind extent:

Hurricane Trop Stm

Tropical Storm Harvey Model Track Guidance

Initialized at 18z Aug 17 2017

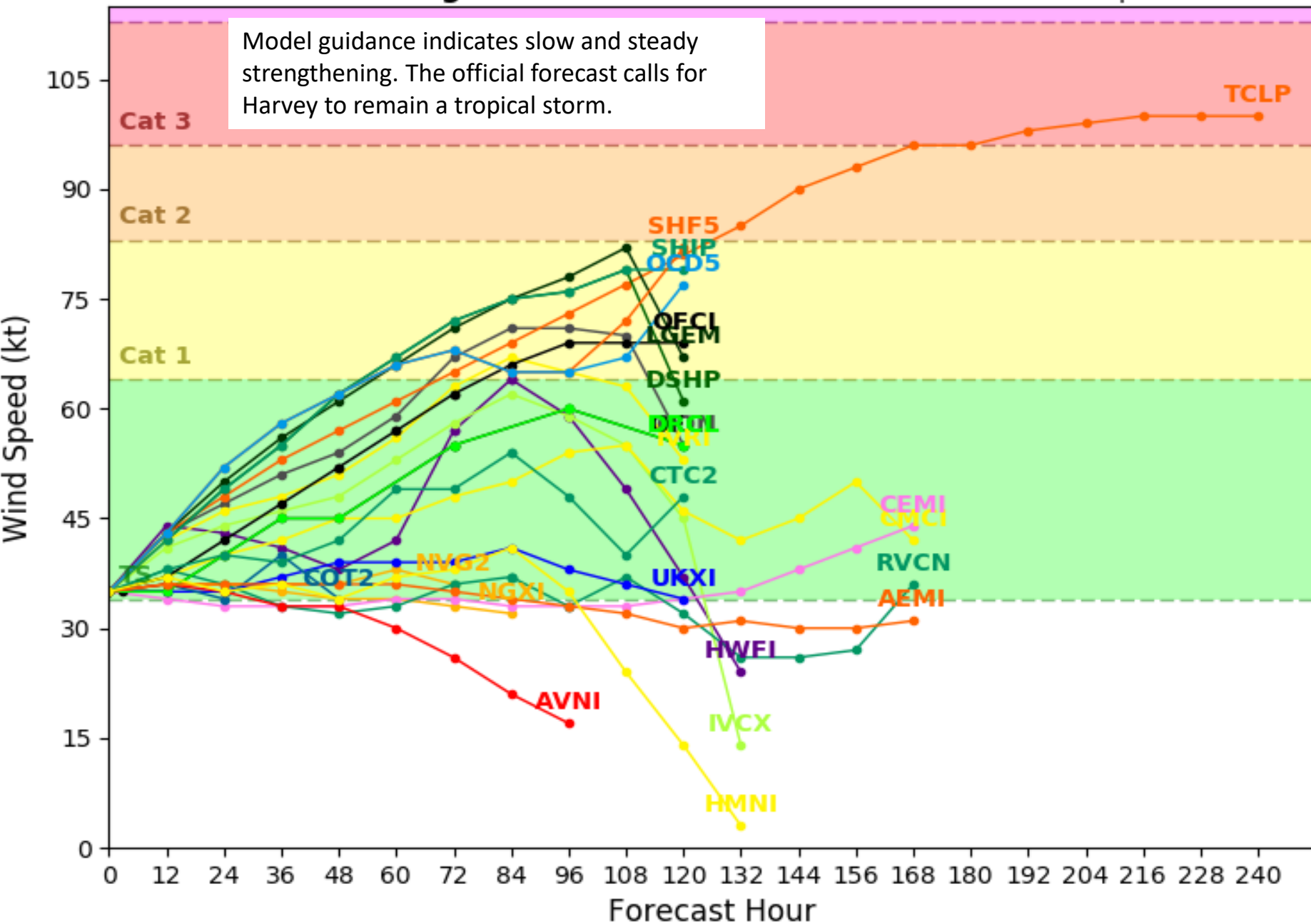
Levi Cowan - tropicaltidbits.com



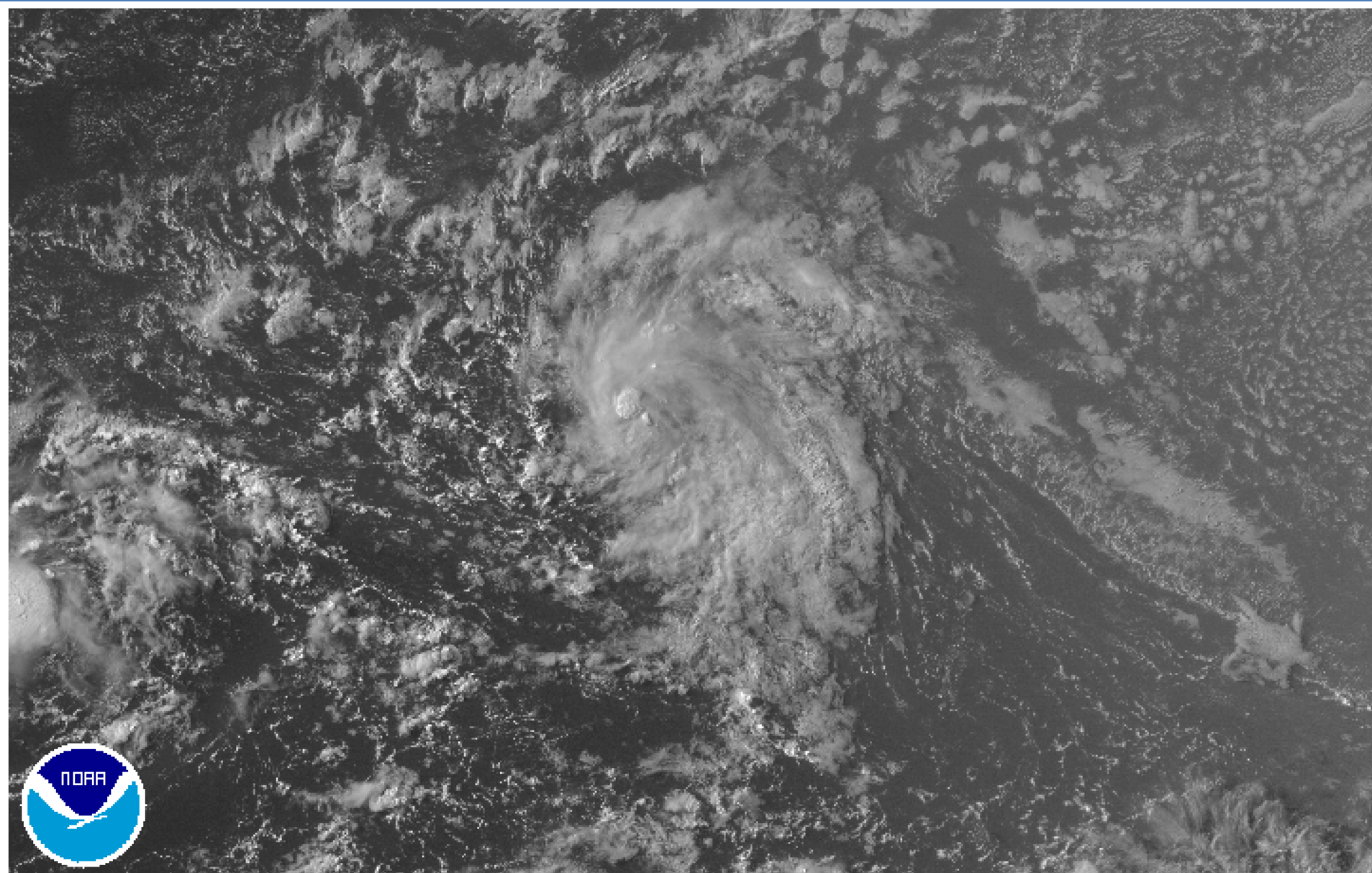
Track guidance is in good agreement, indicating a westerly movement into the Caribbean Sea and toward Central America.

Initialized at 18z Aug 17 2017

Model guidance indicates slow and steady strengthening. The official forecast calls for Harvey to remain a tropical storm.



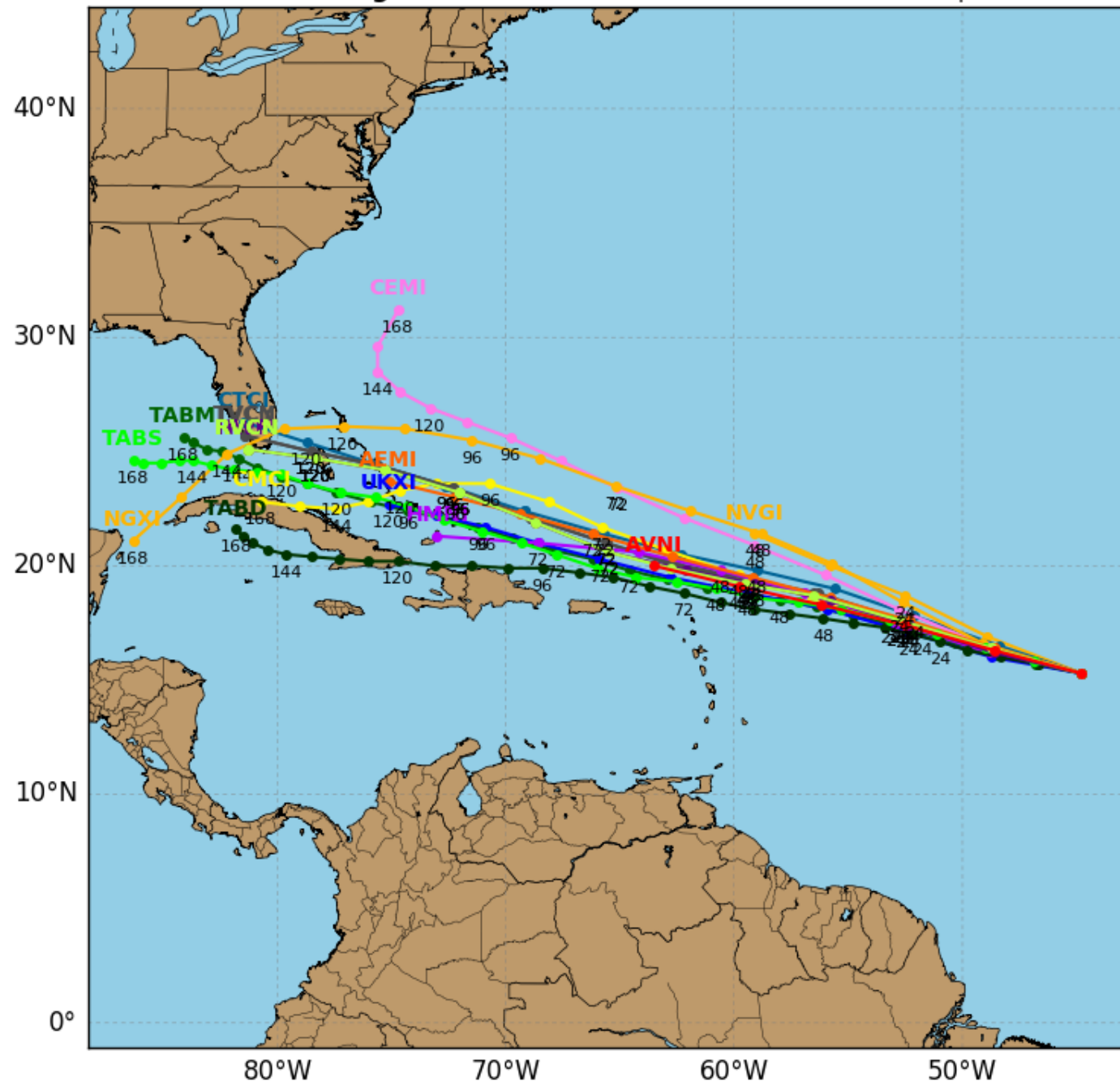
Satellite Image of Invest 92L



Invest 92L Model Track Guidance

Initialized at 18z Aug 17 2017

Levi Cowan - tropicaltidbits.com



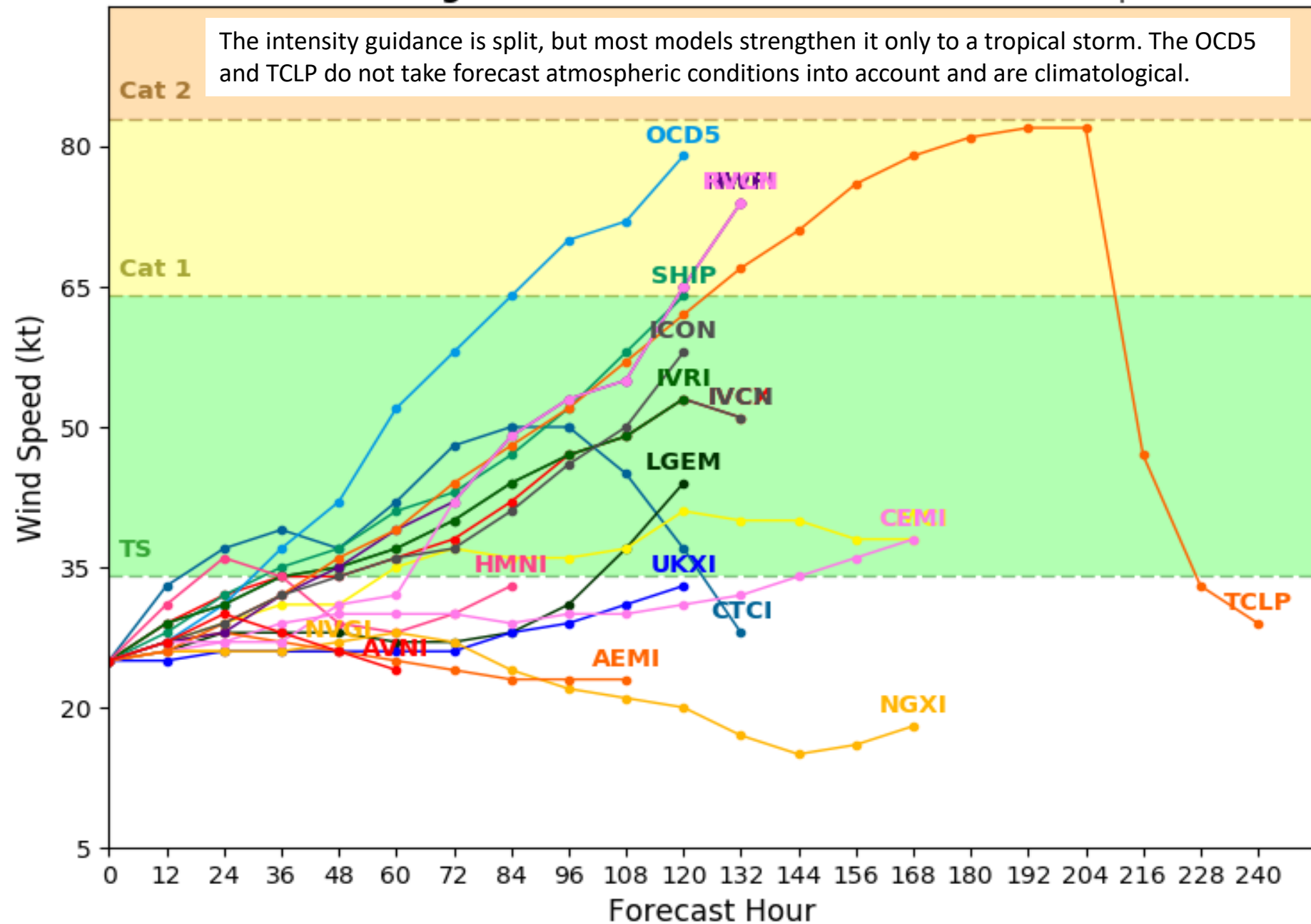
Track guidance remains in good agreement, indicating a west-northwest movement over the next few days into the southwestern Atlantic and continuing toward the Bahamas and the Florida Straits.

Invest 92L Model Intensity Guidance

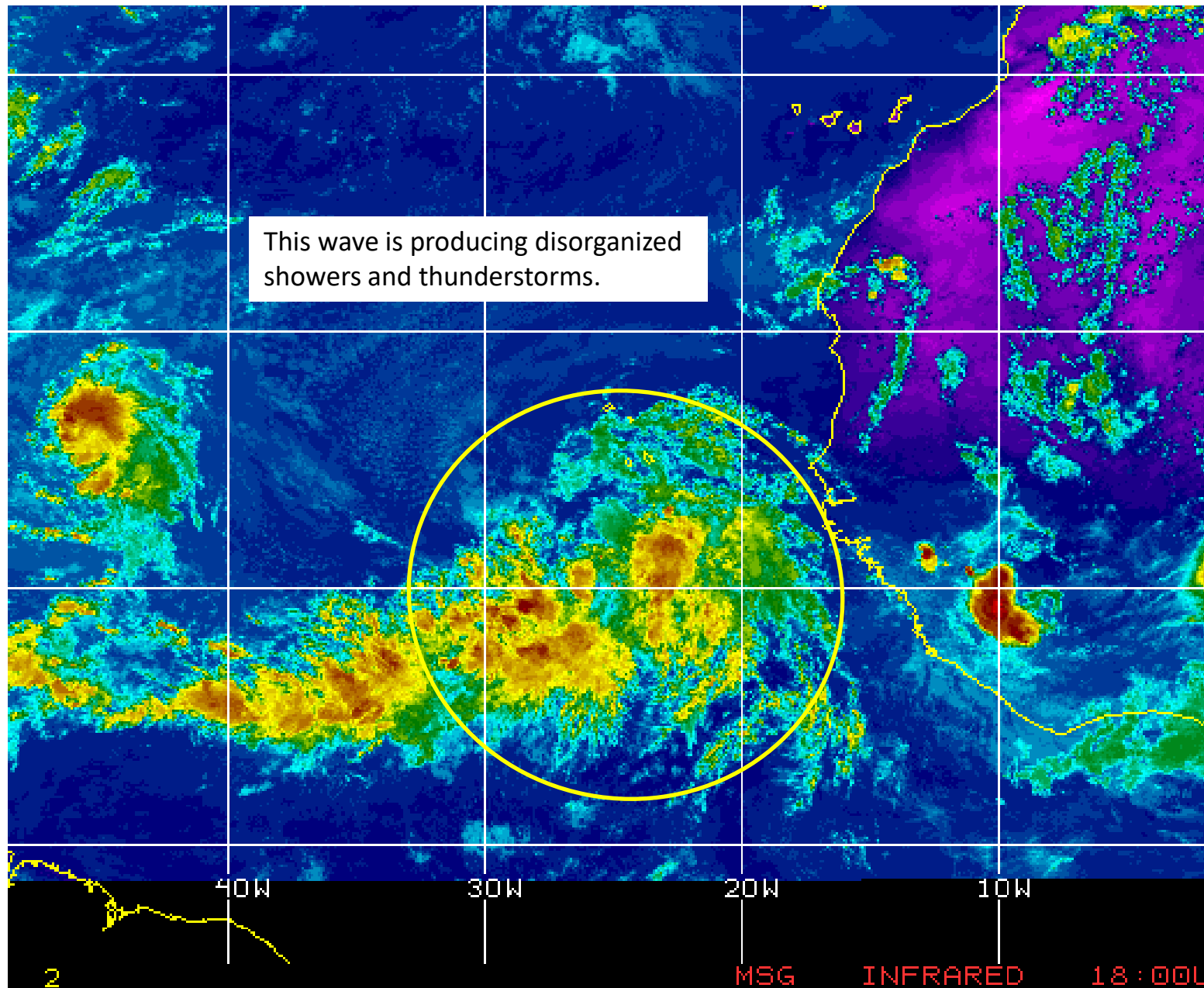
Initialized at 18z Aug 17 2017

Levi Cowan - tropicaltidbits.com

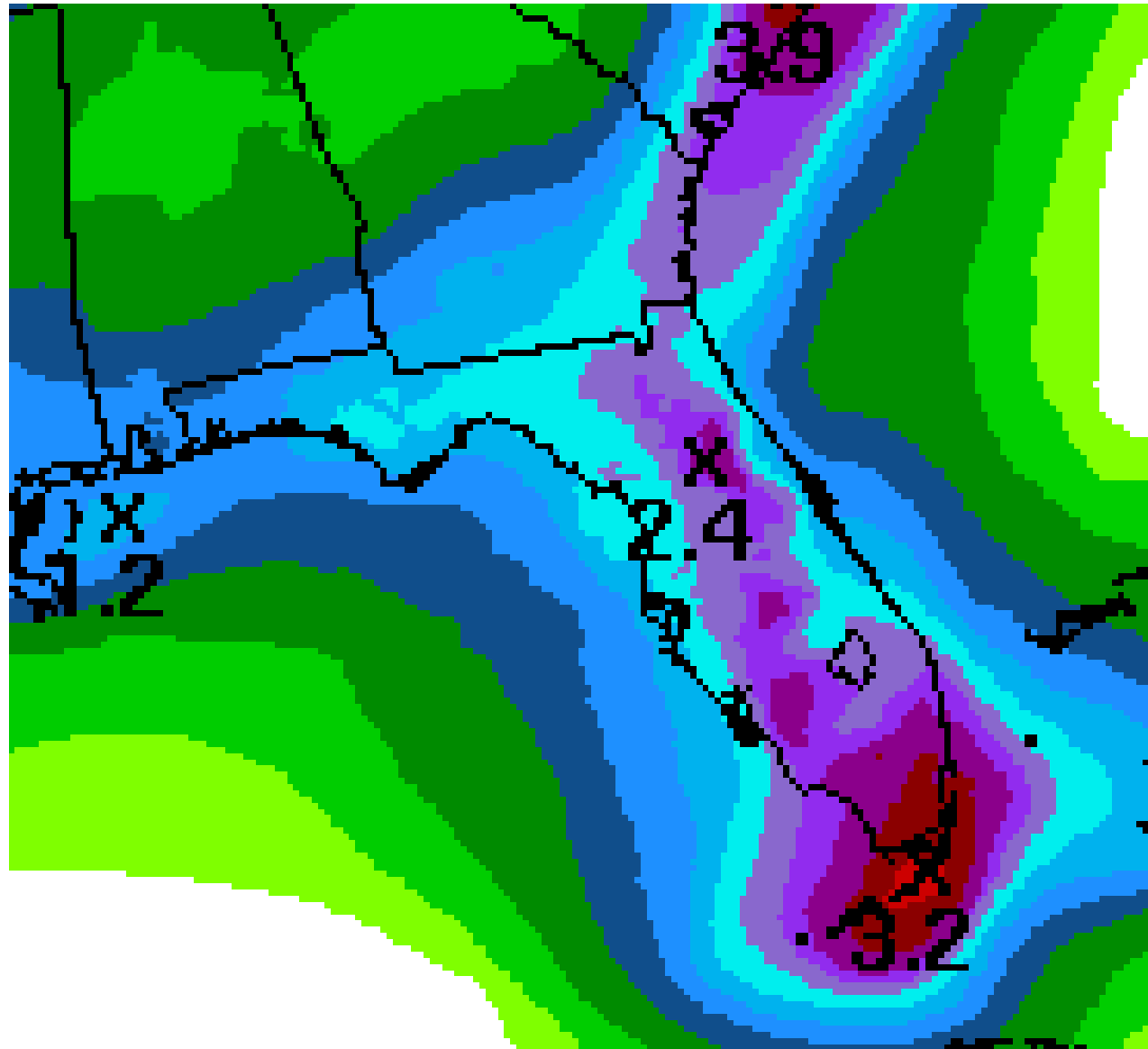
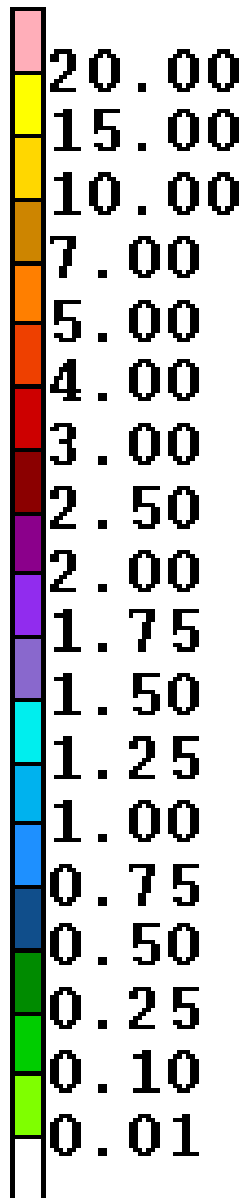
The intensity guidance is split, but most models strengthen it only to a tropical storm. The OCD5 and TCLP do not take forecast atmospheric conditions into account and are climatological.



Satellite Image of Tropical Wave (30%)



Forecast Total Rainfall Accumulation (Through Next Wednesday)



Summary:

- As of 5pm EDT, Gert has been designated a post-tropical cyclone and advisories will no longer be issued. Gert is located about 860 miles east of Halifax, Nova Scotia, and is moving east-northeast at 39 mph with maximum sustained winds of 65 mph.
- Invest 91L was designated Potential Tropical Cyclone Nine at 11am EDT this morning with maximum sustained winds of 35 mph.
- A Hurricane Hunter reconnaissance flight this afternoon found that PTC Nine had a closed circulation center and sustained tropical storm force winds, and it is now Tropical Storm Harvey.
- At 5pm EDT, Harvey was located about 250 miles east of Barbados, or about 1825 miles southeast of Miami, and is moving west at 18 mph with maximum sustained winds of 40 mph.
- Harvey is expected to continue moving just north of west through the Windward Islands and into the Caribbean Sea and, eventually, approach Central America.
- While the intensity guidance indicates steady strengthening, the global models are much more modest with Harvey's future intensity. It is expected to remain a tropical storm as it moves through the Caribbean as it encounters moderate wind shear.
- A tropical wave located about 1200 miles east of the Leeward Islands, designated Invest Area 92L, continues to show signs of organization.
- It has been given a 60% (medium) chance of development over the next 48 hours and over the next five days as it moves west-northwestward toward the southwestern Atlantic.
- Track guidance indicates a continued west-northwesterly movement over the next few days into the southwestern Atlantic and then continuing toward the Bahamas and South Florida.
- Intensity guidance is split on 92L's future intensity, with some models strengthening it into a tropical storm within two to four days and others keeping it a tropical depression or wave.

- A tropical wave near the Cabo Verde Islands is producing disorganized showers and thunderstorms this afternoon. Conditions are expected to be conducive for gradual development as it moves west to west-northwest over the next few days.
- It has a near 0% chance of development over the next 48 hours and a 30% (low) chance of development over the next five days.

Florida Outlook:

- Tropical Storm Harvey is not a threat to Florida.
- Invest 92L could approach South Florida around this time next week, but likely only as a tropical wave or depression. It should be monitored closely over the next few days.
- 92L would have the potential to bring locally heavy rainfall to South Florida in the middle part of next week. It is too early to speculate about any other potential impacts.
- It is also too early to determine if the tropical wave near the Cabo Verde Islands will pose a threat to Florida.

Another briefing packet will be issued Friday morning. For more information, visit the NHC website at www.hurricanes.gov.



TROPICAL UPDATE

Created by:

William Watson, Assistant State Meteorologist
william.watson@em.myflorida.com

State Meteorological Support Unit

Florida Division of Emergency Management

Users wishing to subscribe (approval pending) to this distribution list, register at
https://public.govdelivery.com/accounts/FLDEM/subscriber/new?topic_id=SERT_Met_Tropics.
Other reports available for subscription are available at
<https://public.govdelivery.com/accounts/FLDEM/subscriber/new?preferences=true>